

V&V Reference Report

L2 ASCDS Version : 8.4.5

Observation 1583 - L2 Version 3
Chandra X-Ray Center

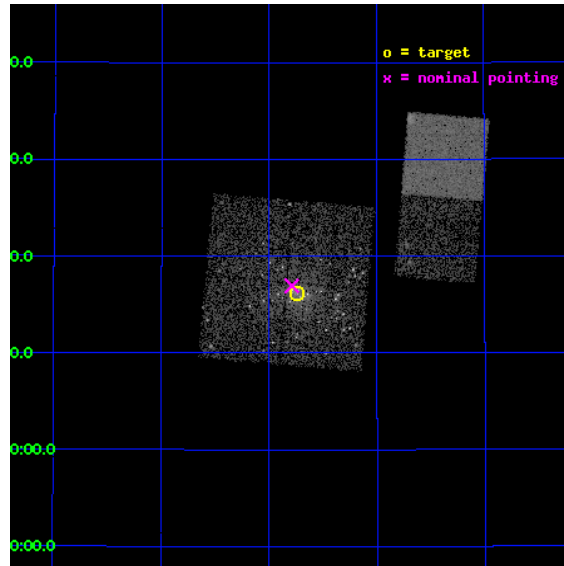
L2 Processing Date : Sep 17 2012

Contents

1	Front	2
2	OBI	3
2.1	OBI	3
2.1.1	Images	3
2.1.2	Bias	3
2.1.3	Parameters	4
2.1.4	Events	4
2.2	Compared Parameters	5
2.3	Aspect	6
2.4	Star Slots	9
2.4.1	Slot 3	9
2.4.2	Slot 4	10
2.4.3	Slot 5	11
2.4.4	Slot 6	12
2.4.5	Slot 7	13
2.5	FID Slots	14
2.5.1	Slot 0	14
2.5.2	Slot 1	15
2.5.3	Slot 2	16
A	Summary	17
A.1	Status	17
A.2	Comments	17

1 Front

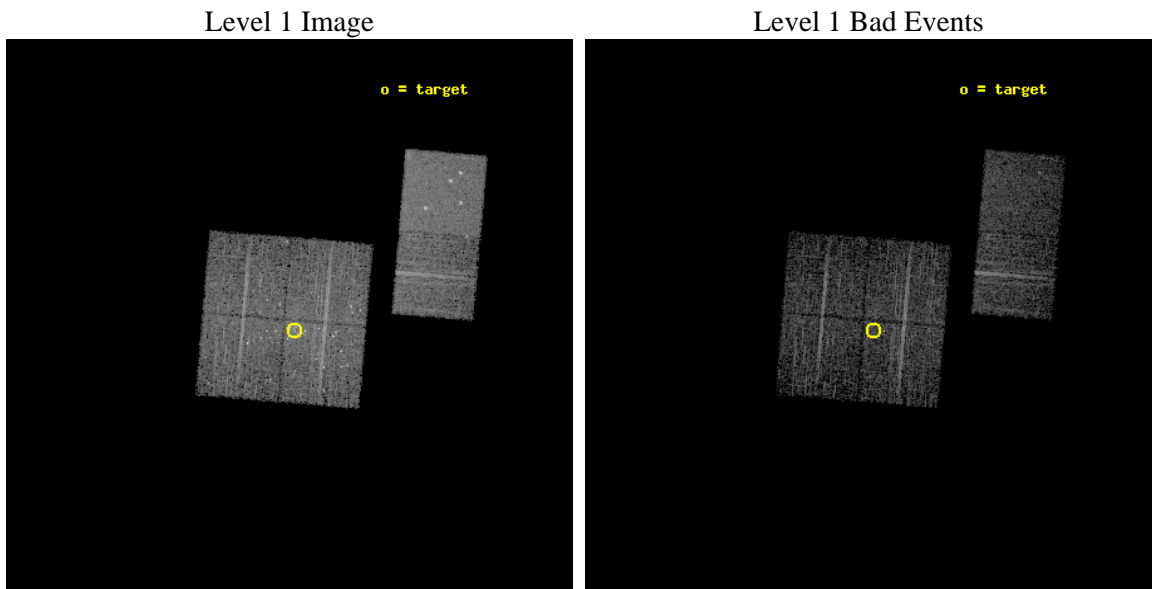
seq_num	600140	Sequence number
obs_id	1583	Observation id
title	MONITORING THE M31 NUCLEAR REGION	Proposal title
observer	Dr. Stephen Murray	Principal investigator
object	M31 NUCLEUS	Source name
dtcycle	0	
cycle	P	events from which exps? Prim/Second/Both
ra_targ	10.685	Observer's specified target RA [deg]
dec_targ	41.268972	Observer's specified target Dec [deg]
ra_nom	10.697133610046	Nominal RA [deg]
dec_nom	41.282462707655	Nominal Dec [deg]
roll_nom	94.903076408959	Nominal Roll [deg]
revision	3	Processing version of data
ontime	4966.2721900195	Sum of GTIs [s]
livetime	4903.3862612194	Livetime [s]
ontime0	4966.1490700245	Sum of GTIs [s]
ontime1	4966.1901100278	Sum of GTIs [s]
ontime2	4966.2311500311	Sum of GTIs [s]
ontime3	4966.2721900195	Sum of GTIs [s]
ontime5	4966.3132300228	Sum of GTIs [s]
ontime6	4966.3542700261	Sum of GTIs [s]
l2events	50371	Number of level 2 events



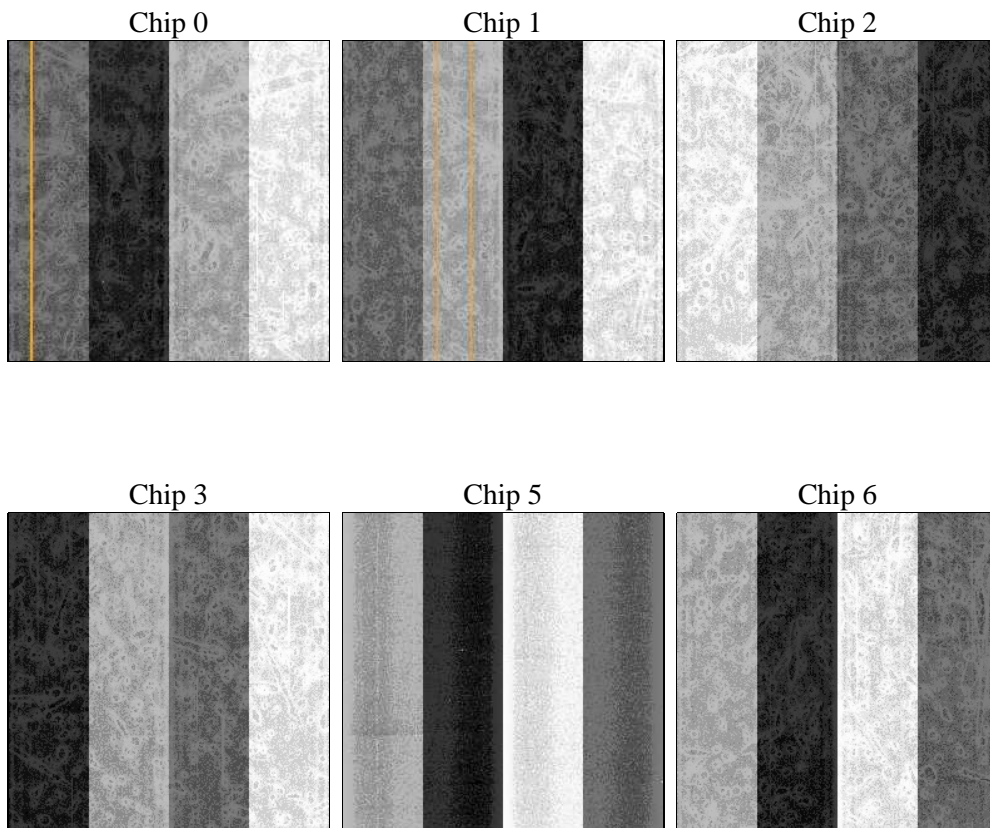
2 OBI

2.1 OBI

2.1.1 Images



2.1.2 Bias



2.1.3 Parameters

obi_num	0	Obi number	sched_exp_time	5000.000000	[s] Scheduled observation exposure time
ascdsver	8.4.5	Processing system revision	ontime	4966.2721900195	Sum of GTIs [s]
caldsver	4.5.1.1	 	ontime0	4966.1490700245	Sum of GTIs [s]
date	2012-09-17T18:23:55	Date and time of file creation	ontime1	4966.1901100278	Sum of GTIs [s]
revision	3	Processing version of data	ontime2	4966.2311500311	Sum of GTIs [s]
			ontime3	4966.2721900195	Sum of GTIs [s]
			ontime5	4966.3132300228	Sum of GTIs [s]
			ontime6	4966.3542700261	Sum of GTIs [s]
			l1events	219462	Number of level 1 events

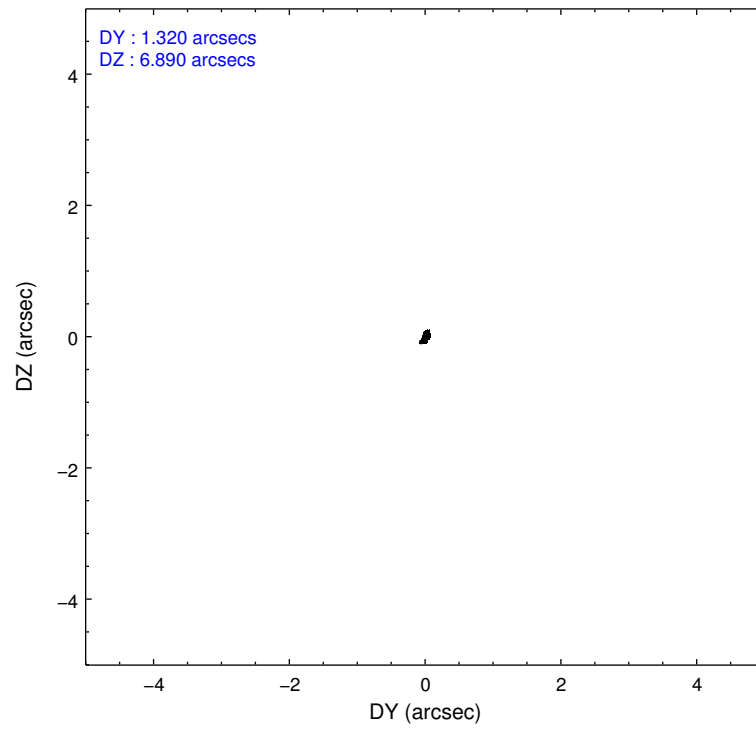
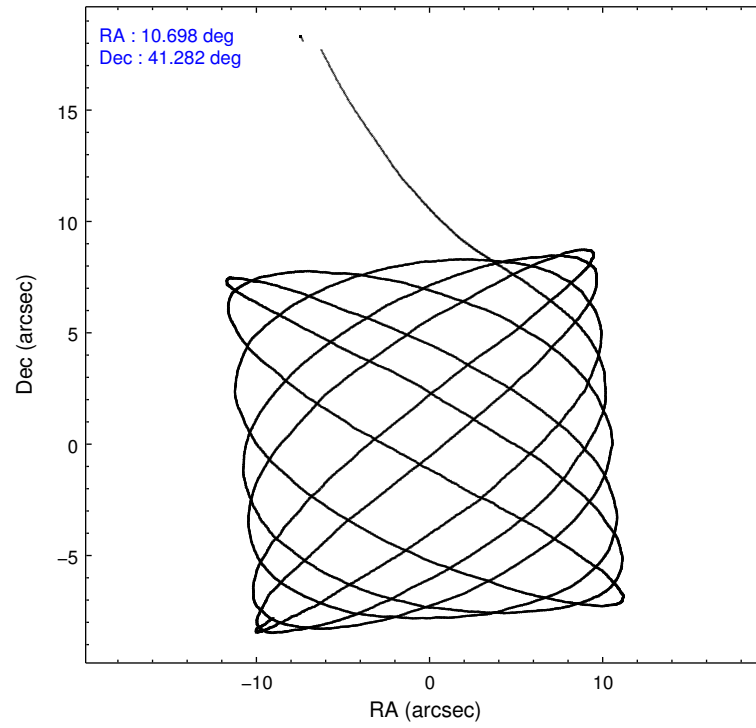
2.1.4 Events

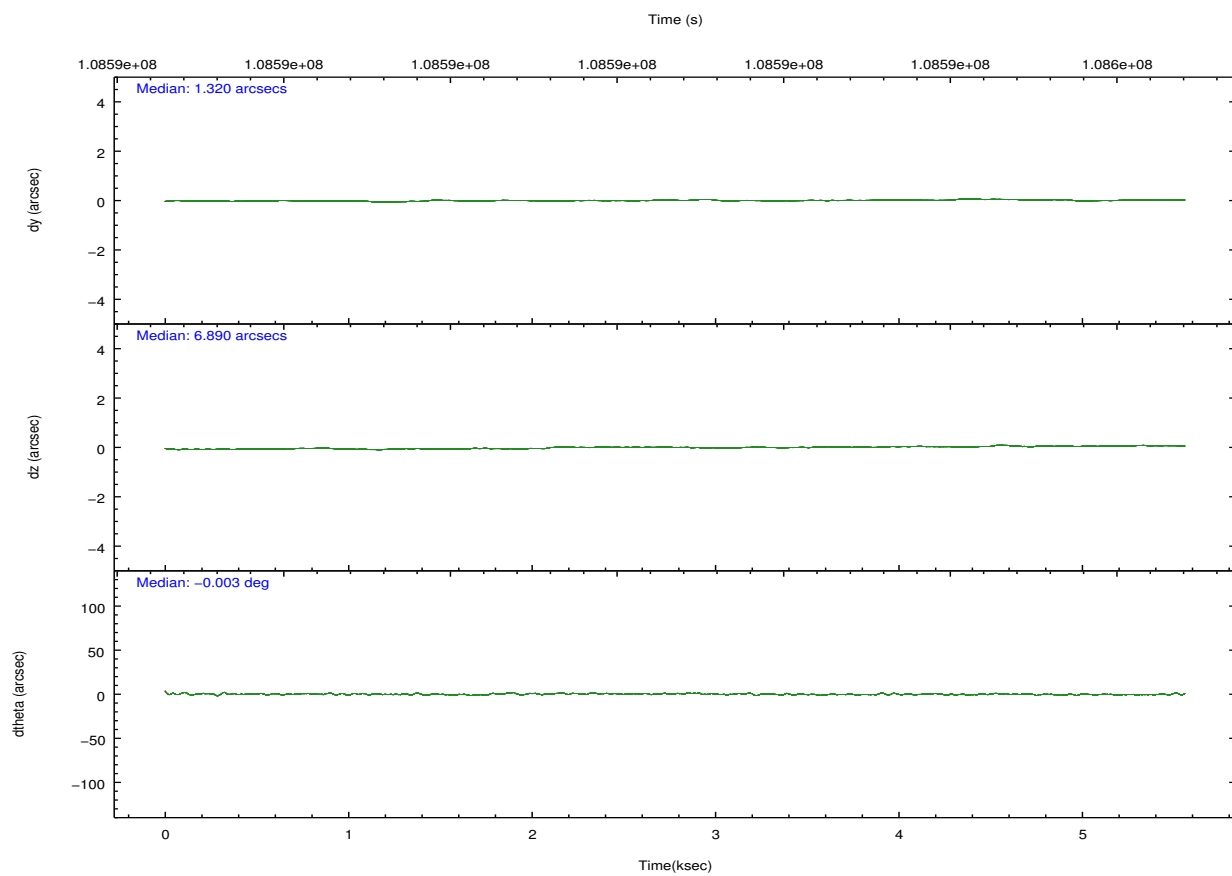
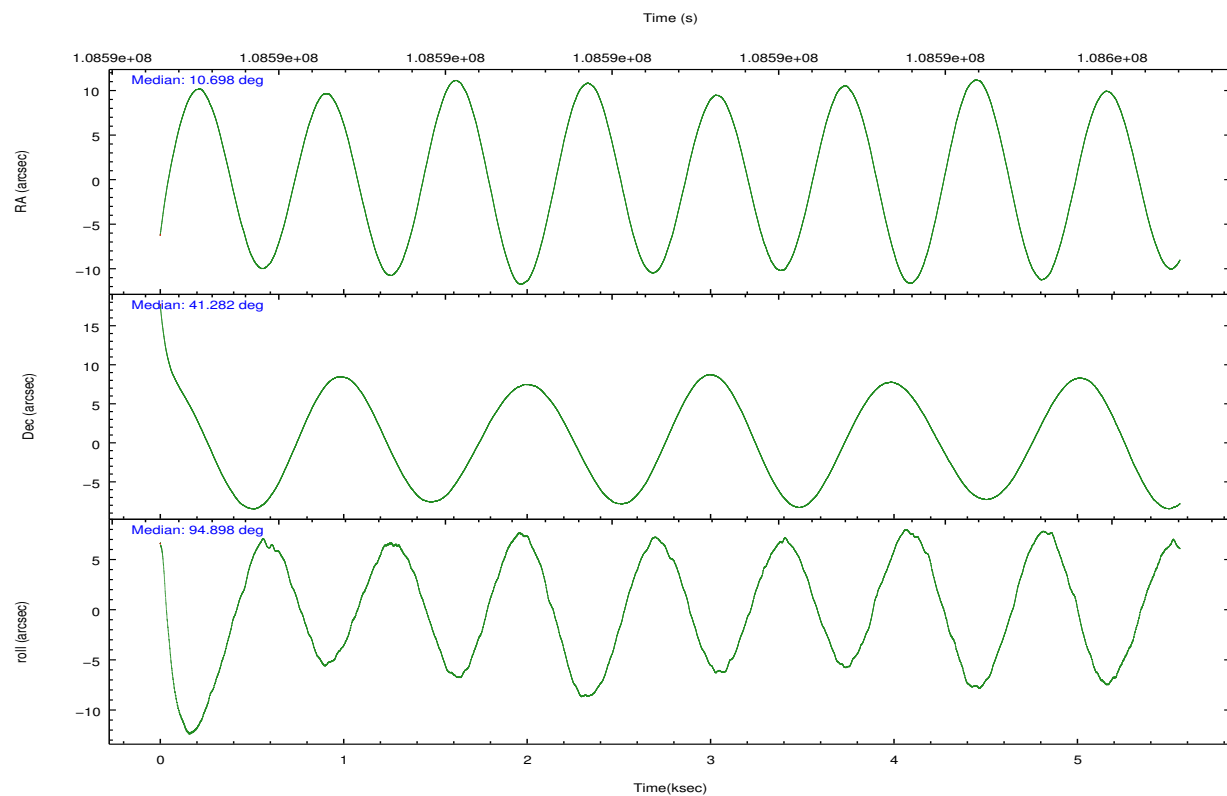
	ccd 0	ccd 1	ccd 2	ccd 3	ccd 5	ccd 6		ccd 0	ccd 1	ccd 2	ccd 3	ccd 5	ccd 6
level 1 events	30242	31779	35577	41365	47269	33230	grade 0 events	3147	3834	3271	8800	4460	1605
rejected events	24559	25073	29821	28751	24553	29441		10%	12%	9%	21%	9%	4%
rejected %	81%	78%	83%	69%	51%	88%	grade 1 events	36	42	35	256	170	17
								0%	0%	0%	0%	0%	0%
							grade 2 events	1015	1082	963	1737	5843	682
								3%	3%	2%	4%	12%	2%
							grade 3 events	482	495	454	578	905	374
								1%	1%	1%	1%	1%	1%
							grade 4 events	384	515	436	598	867	394
								1%	1%	1%	1%	1%	1%
							grade 5 events	1172	1198	1114	1400	3459	1379
								3%	3%	3%	3%	7%	4%
							grade 6 events	664	789	641	916	10676	740
								2%	2%	1%	2%	22%	2%
							grade 7 events	23342	23824	28663	27080	20889	28039
								77%	74%	80%	65%	44%	84%

2.2 Compared Parameters

Parameter	Planned	Actual	Parameter	Planned	Actual
Instrument	ACIS	ACIS	Obspar format version number	7	7
Detector	ACIS-012356	ACIS-012356	Obspar file type	PREDICTED	ACTUAL
Grating	NONE	NONE	Obspar update status	NONE	UPDATED
Data mode	FAINT	FAINT	Number of optional ACIS chips dropped	0	0
Observation mode	POINTING	POINTING	On-chip summing requested	N	N
[deg] Pointing RA	10.718019	10.6971336100463	Subarray requested	NONE	NONE
[deg] Pointing Dec	41.259980	41.28246270765541	Alternating exposures requested	N	N
[deg] Pointing Roll	94.680592	94.90307640895935	[s] Primary exposure time	0.000000	3.2
[s] Window start time (MET)	107740864.184000	107740864.184000			
[s] Window stop time (MET)	108864064.184000	108864064.184000			
[mm] SIM focus pos	-0.782348	-0.7809083437167272			
[mm] SIM defocus	0	0.001439871863259334			
[mm] SIM translation stage pos	-233.592463	-233.5874344608287			
[mm] SIM translation stage offset	0	-0.005018542100998502			
[s] Observation start time (MET)	108590126.184000	108588969.16365			
Observation start date	2001-06-10T19:54:22	2001-06-10T19:36:09			
[s] Observation end time (MET)	108595126.184000	108595329.8014			
Observation end date	2001-06-10T21:17:42	2001-06-10T21:22:09			
Read mode	TIMED	TIMED			

2.3 Aspect



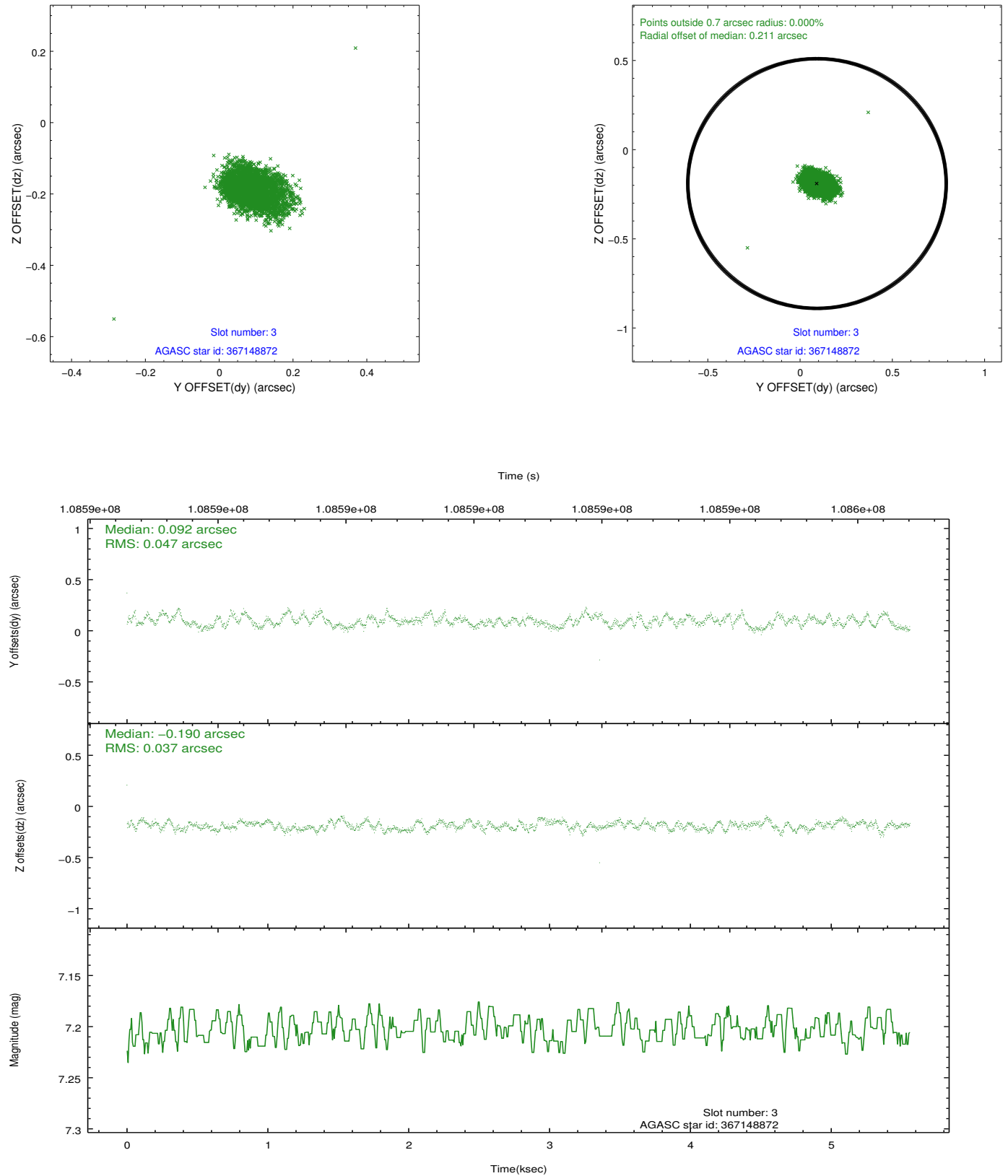


Slot Statistics

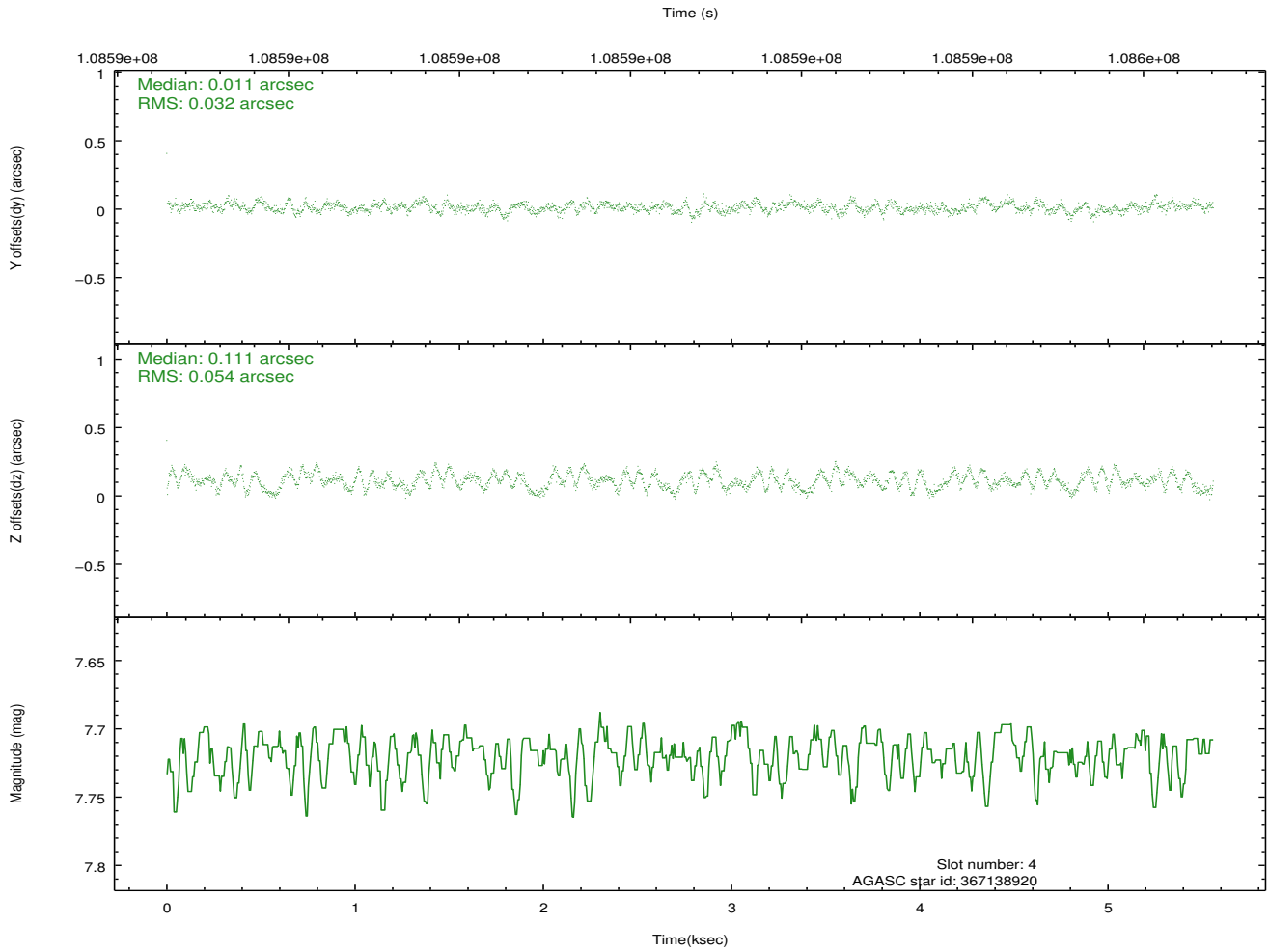
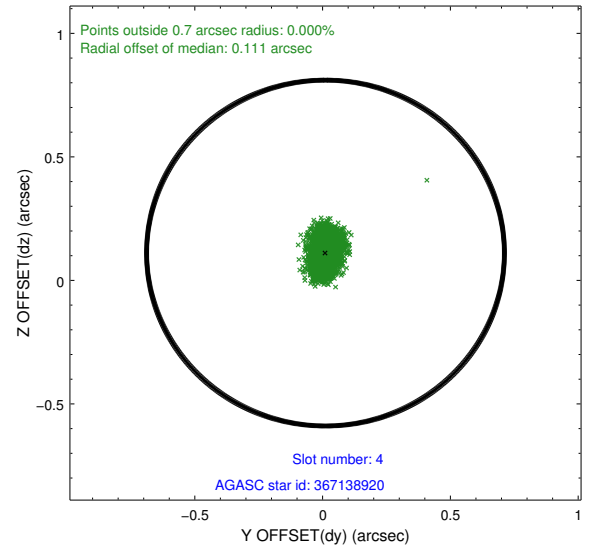
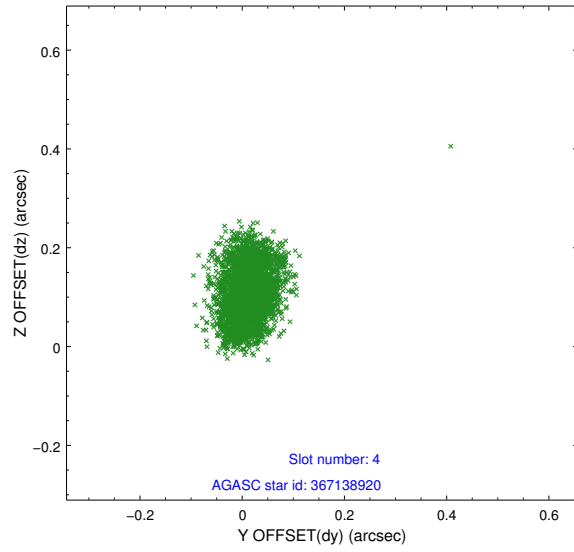
slot	status	id	mag	n_pts	med_dy	med_dz	dr1	dr2	ra	dec	mean_y	mean_z
0	FID	ACIS-I-2	7.16	1357	-0.041	-0.074	0.009	0.016	0.000000	0.000000	-755.69	-836.72
1	FID	ACIS-I-4	7.18	1356	-0.041	0.051	0.006	0.011	0.000000	0.000000	2157.86	1069.07
2	FID	ACIS-I-5	7.23	1356	-0.018	0.092	0.009	0.015	0.000000	0.000000	-1808.12	1068.15
3	GUIDE	367148872	7.20	2712	0.092	-0.190	0.062	0.099	10.505940	40.688258	-2003.02	745.91
4	GUIDE	367138920	7.72	2713	0.011	0.111	0.067	0.105	11.513485	40.808909	-1785.71	-2027.18
5	GUIDE	367674552	8.84	2713	-0.083	0.055	0.056	0.093	11.016238	41.570845	1050.99	-891.26
6	GUIDE	367146616	8.86	2713	-0.004	0.168	0.081	0.133	11.418645	41.190163	-396.79	-1870.72
7	GUIDE	367658664	9.59	2711	-0.016	-0.138	0.093	0.146	10.374070	41.369746	471.70	894.27

2.4 Star Slots

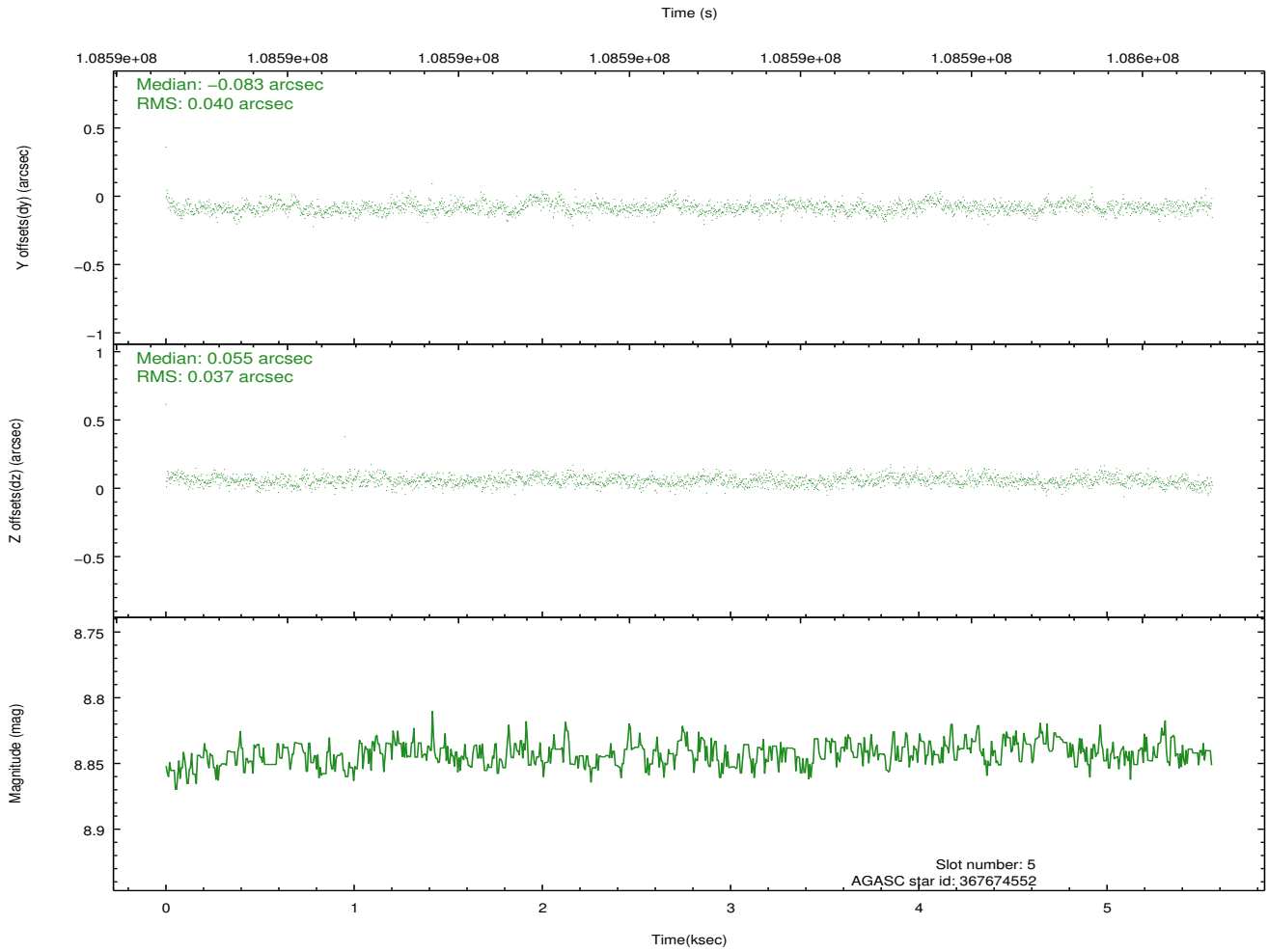
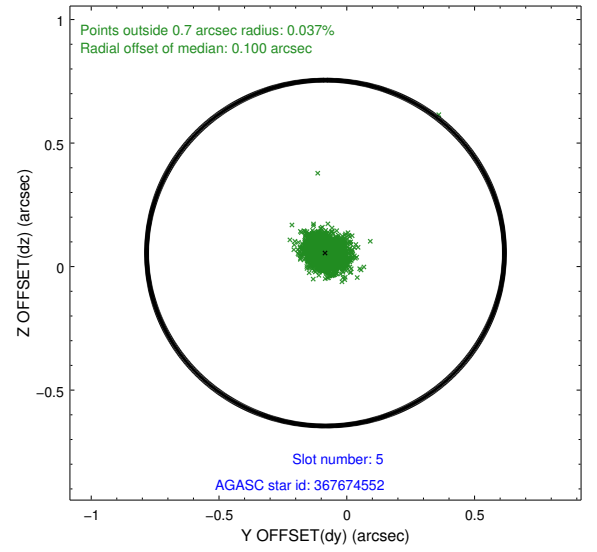
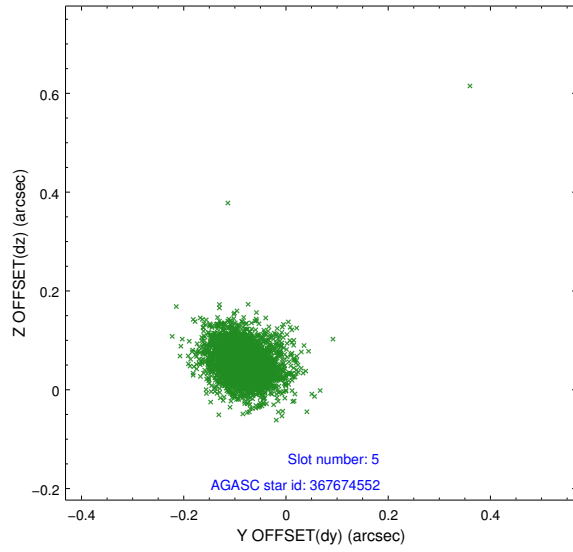
2.4.1 Slot 3



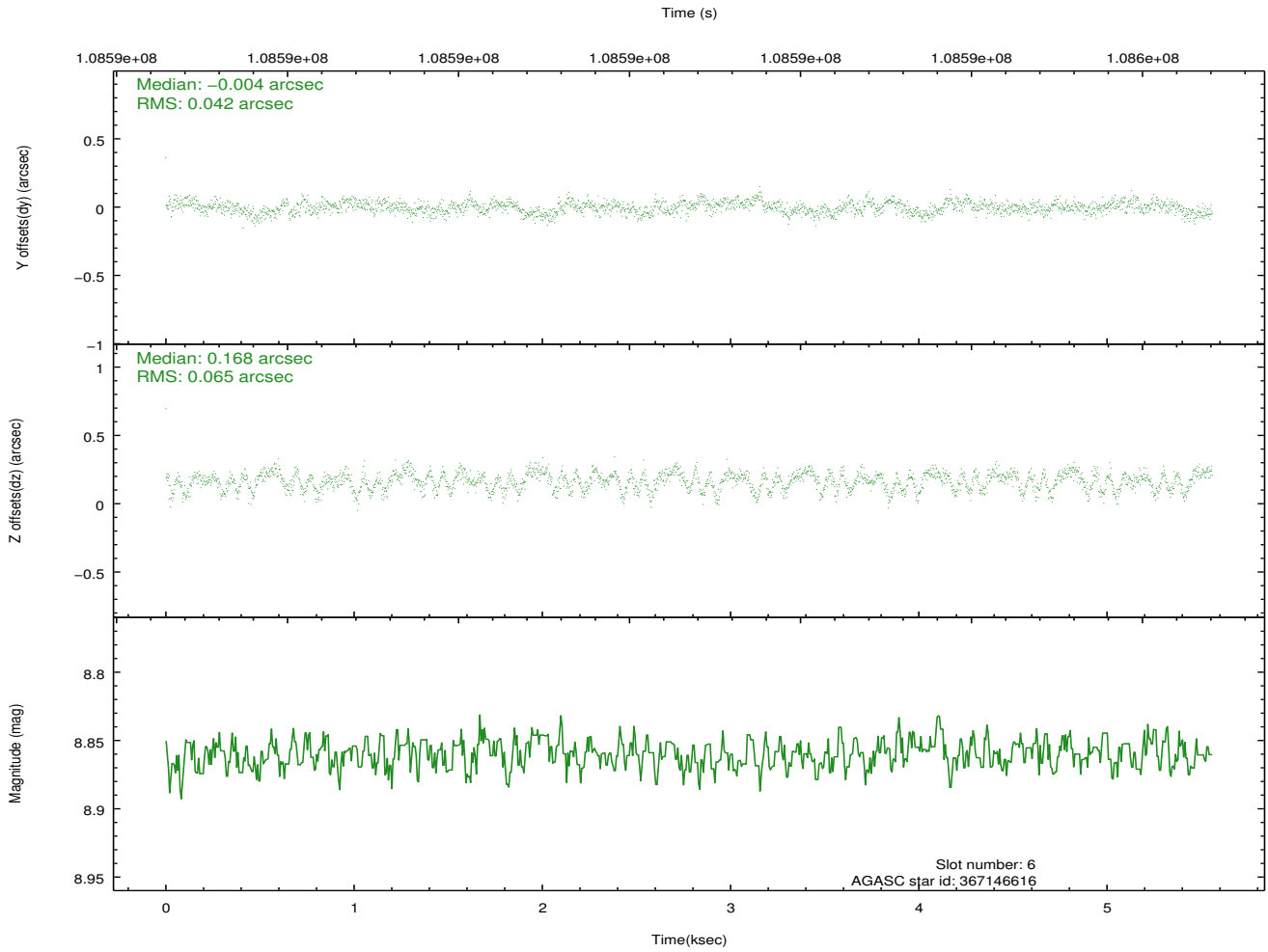
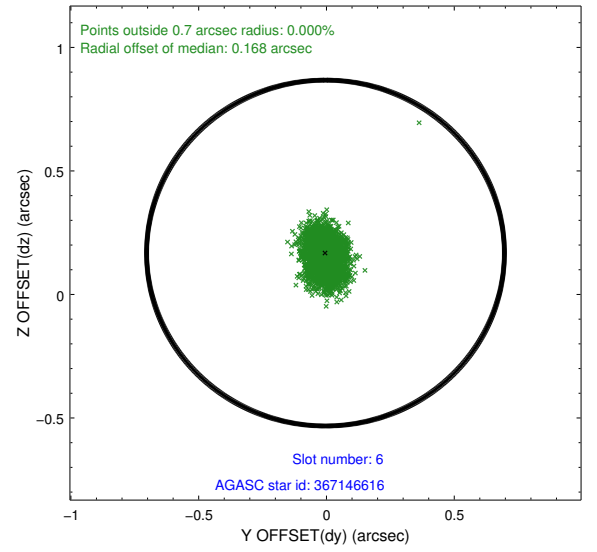
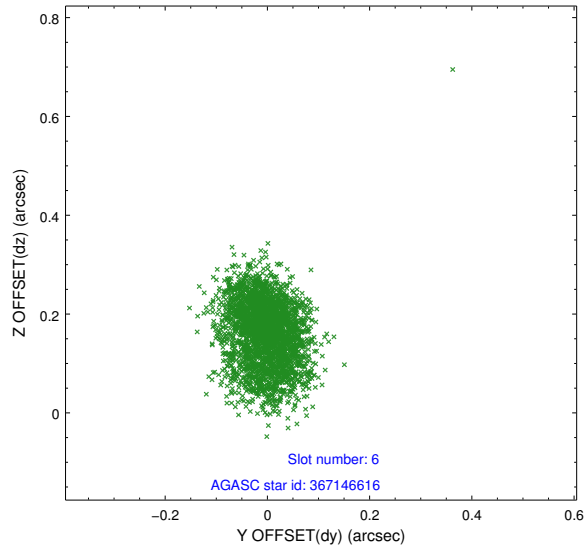
2.4.2 Slot 4



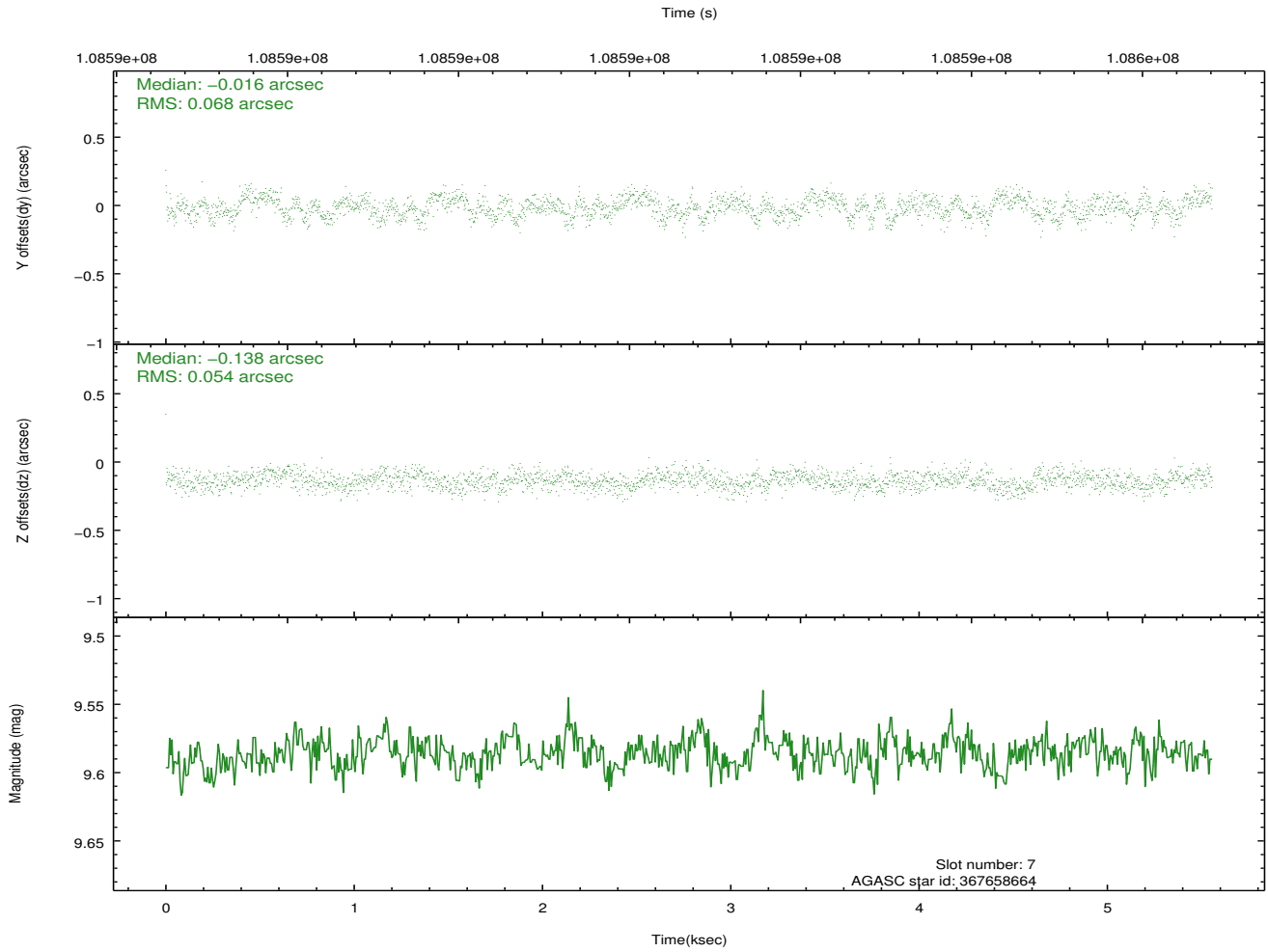
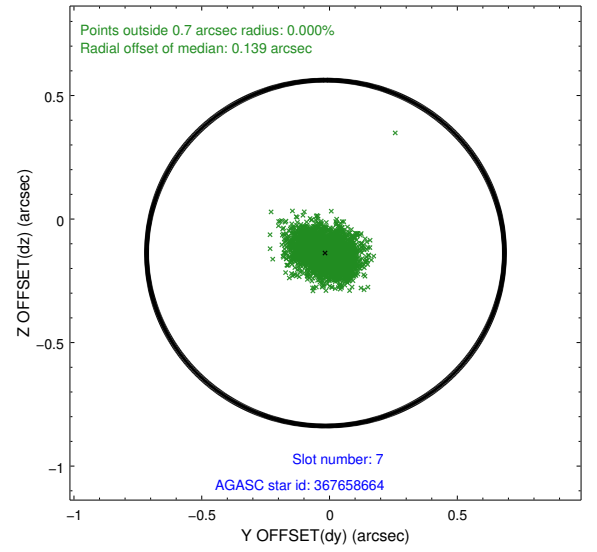
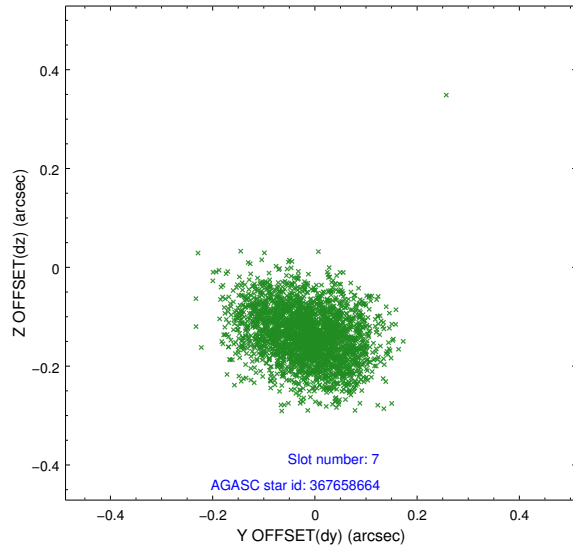
2.4.3 Slot 5



2.4.4 Slot 6

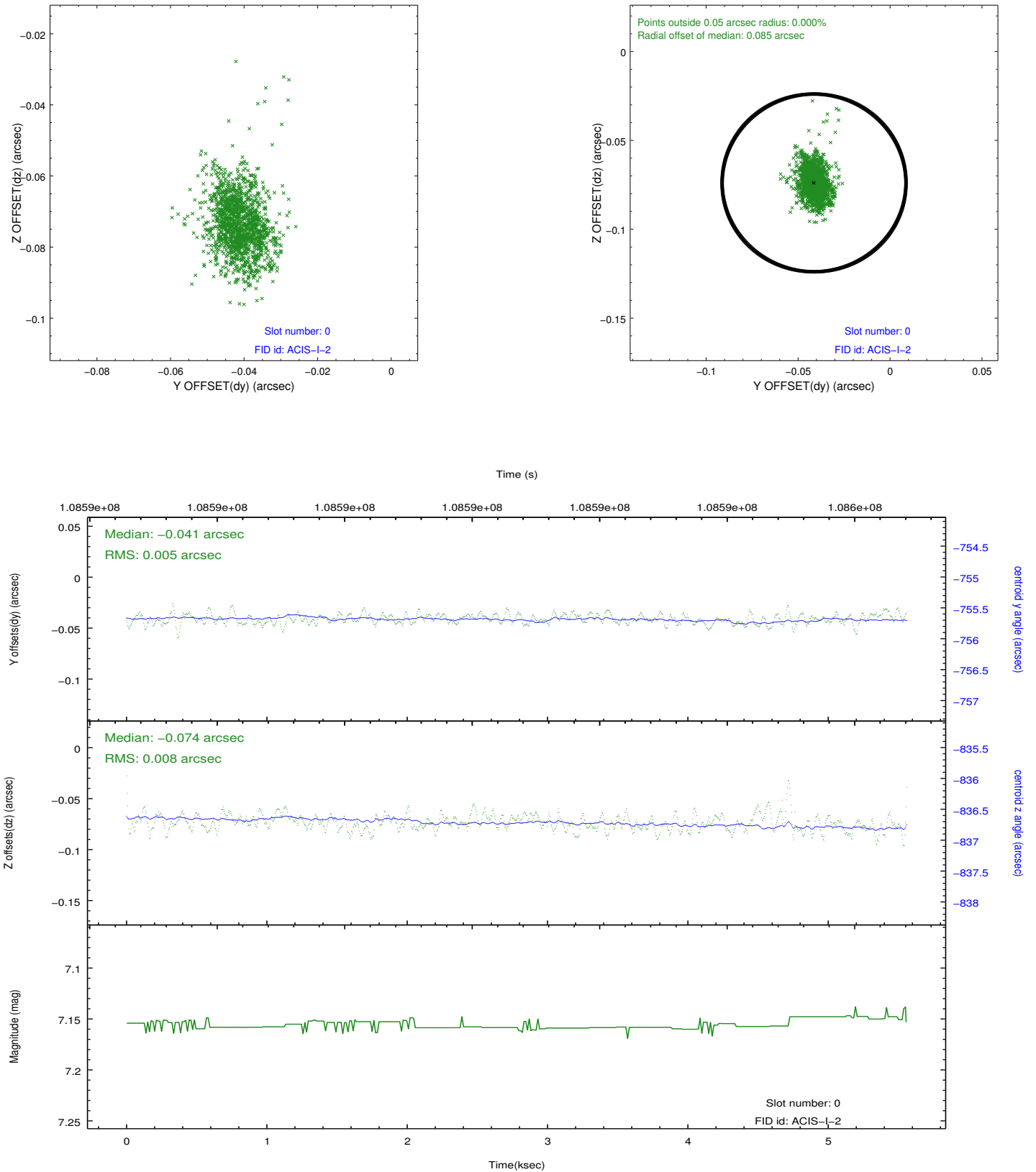


2.4.5 Slot 7

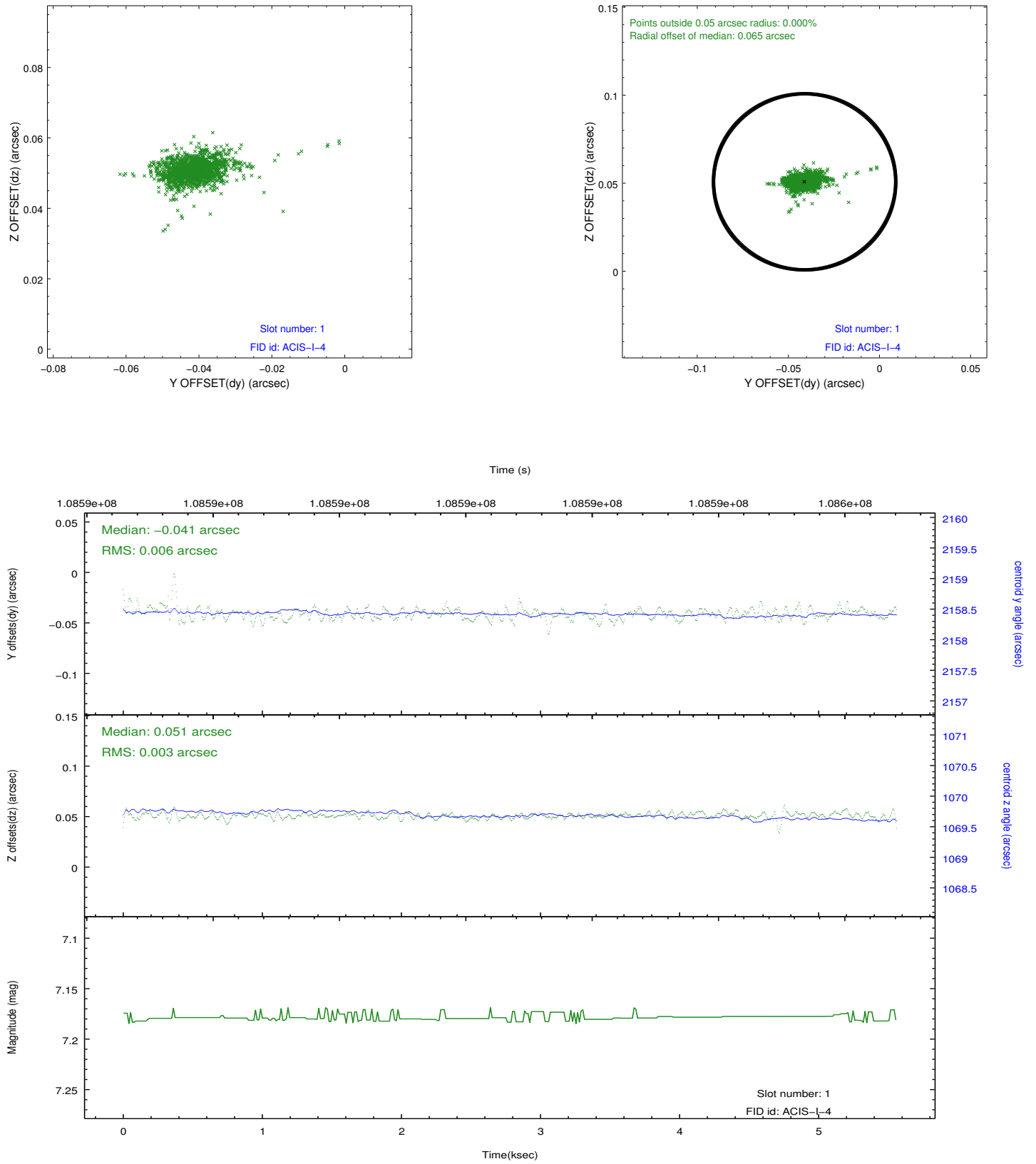


2.5 FID Slots

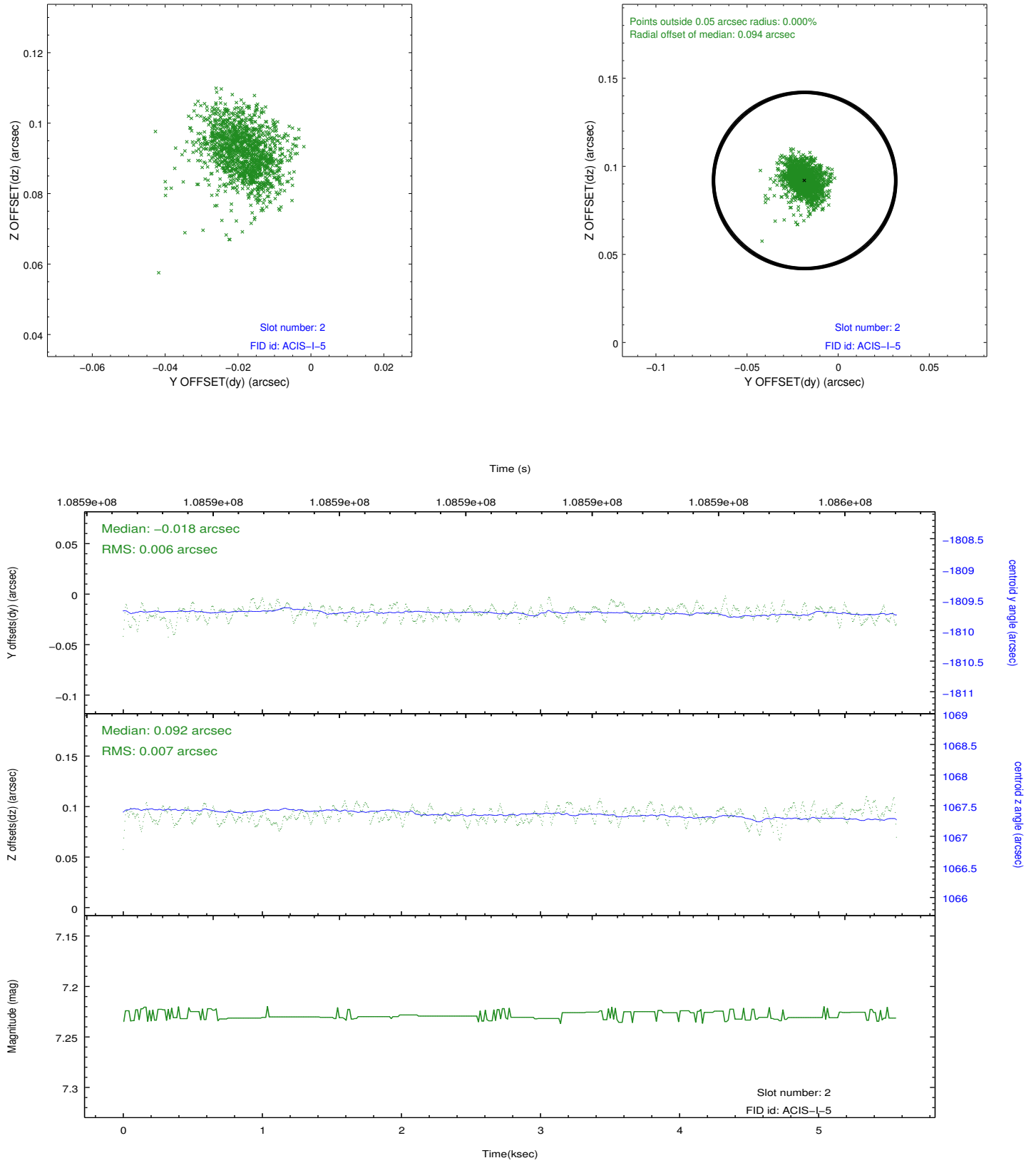
2.5.1 Slot 0



2.5.2 Slot 1



2.5.3 Slot 2



A Summary

A.1 Status

V&V Scientist	Jen Lauer
V&V Date (YYYY-MM-DD)	2012.09.20
V&V Edition	1
V&V Disposition and Status	OK
V&V Charge Time	5

A.2 Comments

Charge time for this ObsId remains at previous value of 5 ks although with the current processing the charge time would have been 4.97 ksec. Window constraint met.