

V&V Reference Report

L2 ASCDS Version : 10.2.4

Observation 15733 - L2 Version 1
Chandra X-Ray Center

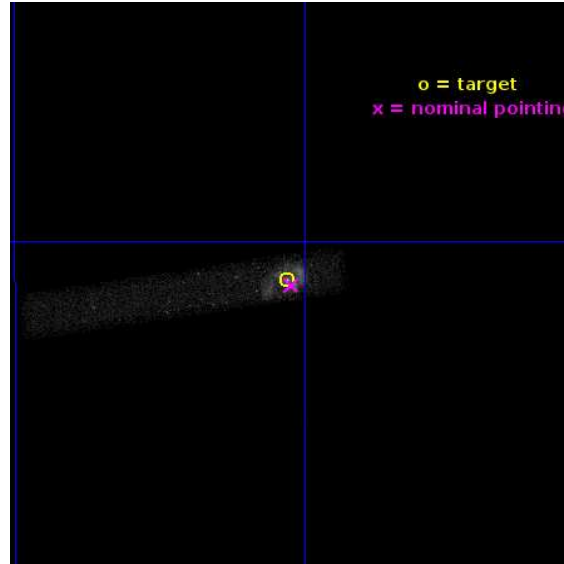
L2 Processing Date : Sep 9 2014

Contents

1	Front	2
2	OBI	3
2.1	OBI	3
2.1.1	Images	3
2.1.2	Bias	3
2.1.3	Parameters	4
2.1.4	Events	4
2.2	Compared Parameters	5
2.3	Aspect	6
2.4	Star Slots	9
2.4.1	Slot 3	9
2.4.2	Slot 4	10
2.4.3	Slot 5	11
2.4.4	Slot 6	12
2.4.5	Slot 7	13
2.5	FID Slots	14
2.5.1	Slot 0	14
2.5.2	Slot 1	15
2.5.3	Slot 2	16
A	Summary	17
A.1	Status	17
A.2	Comments	17

1 Front

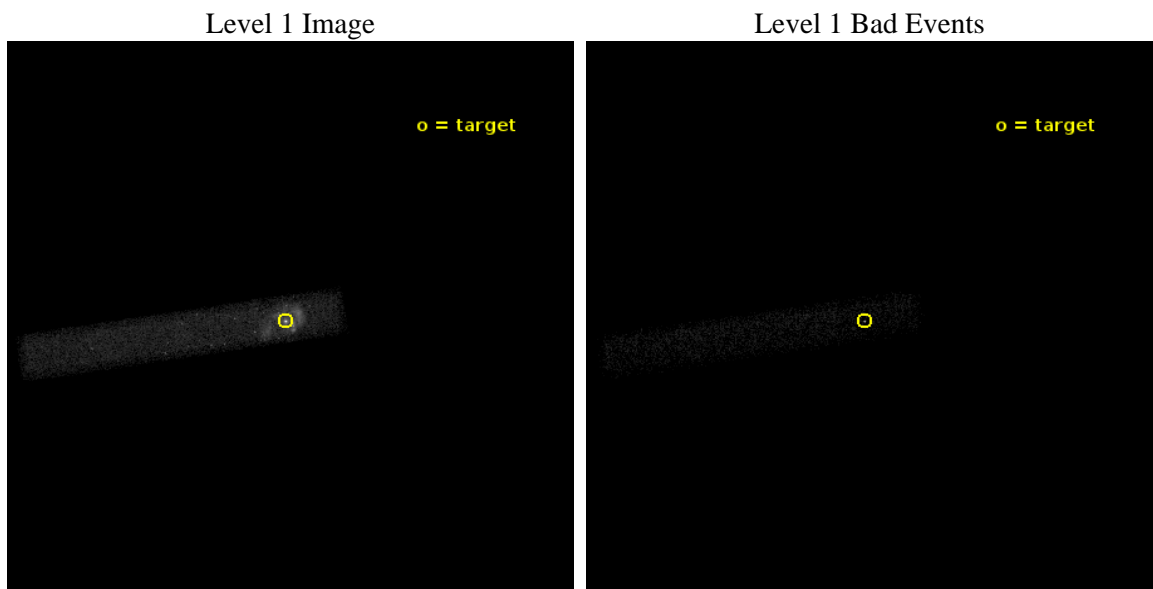
seq_num	200946	Sequence number
obs_id	15733	Observation id
title	Probing the wind/radiative interactions with the circumstellar material at Periastron Passage of Eta Carinae	Proposal title
observer	Dr Kenji Hamaguchi	Principal investigator
object	Eta Carinae	Source name
dtcycle	0	
cycle	P	events from which exps? Prim/Second/Both
ra_targ	161.265	Observer's specified target RA [deg]
dec_targ	-59.6845	Observer's specified target Dec [deg]
ra_nom	161.26085672467	Nominal RA [deg]
dec_nom	-59.686813171979	Nominal Dec [deg]
roll_nom	171.15304852503	Nominal Roll [deg]
revision	1	Processing version of data
ontime	30068.695062041	Sum of GTIs [s]
livetime	27270.71926541	Livetime [s]
ontime7	30068.695062041	Sum of GTIs [s]
l2events	46540	Number of level 2 events



2 OBI

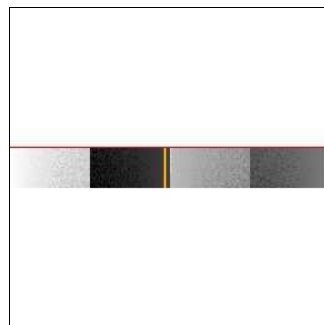
2.1 OBI

2.1.1 Images



2.1.2 Bias

Chip 7



2.1.3 Parameters

obi_num	1	Obi number	sched_exp_time	30000.000000	[s] Scheduled observation exposure time
ascdsver	10.2.4	Processing system revision	ontime	30068.695062041	Sum of GTIs [s]
caldsver	4.6.3	 	ontime7	30068.695062041	Sum of GTIs [s]
date	2014-09-09T06:52:41	Date and time of file creation	l1events	62450	Number of level 1 events
revision	1	Processing version of data			

2.1.4 Events

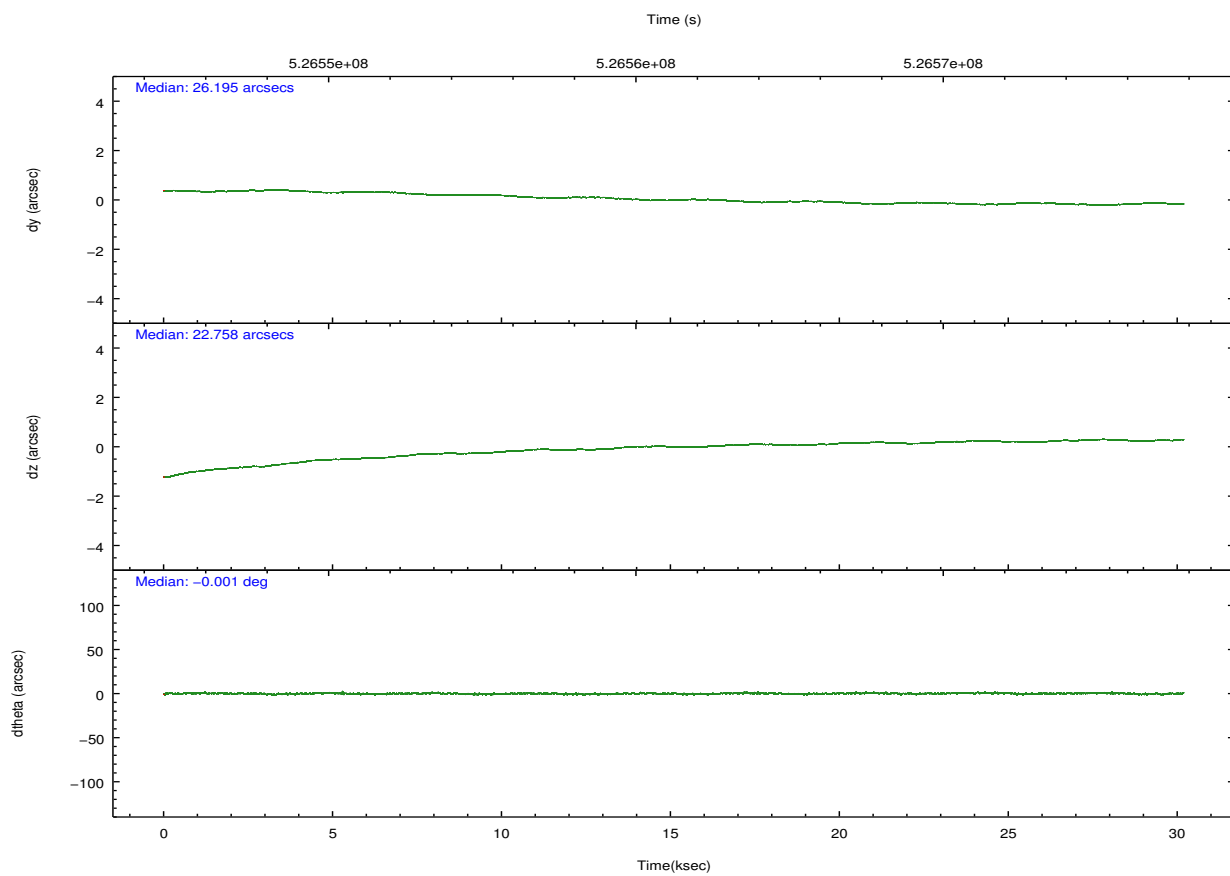
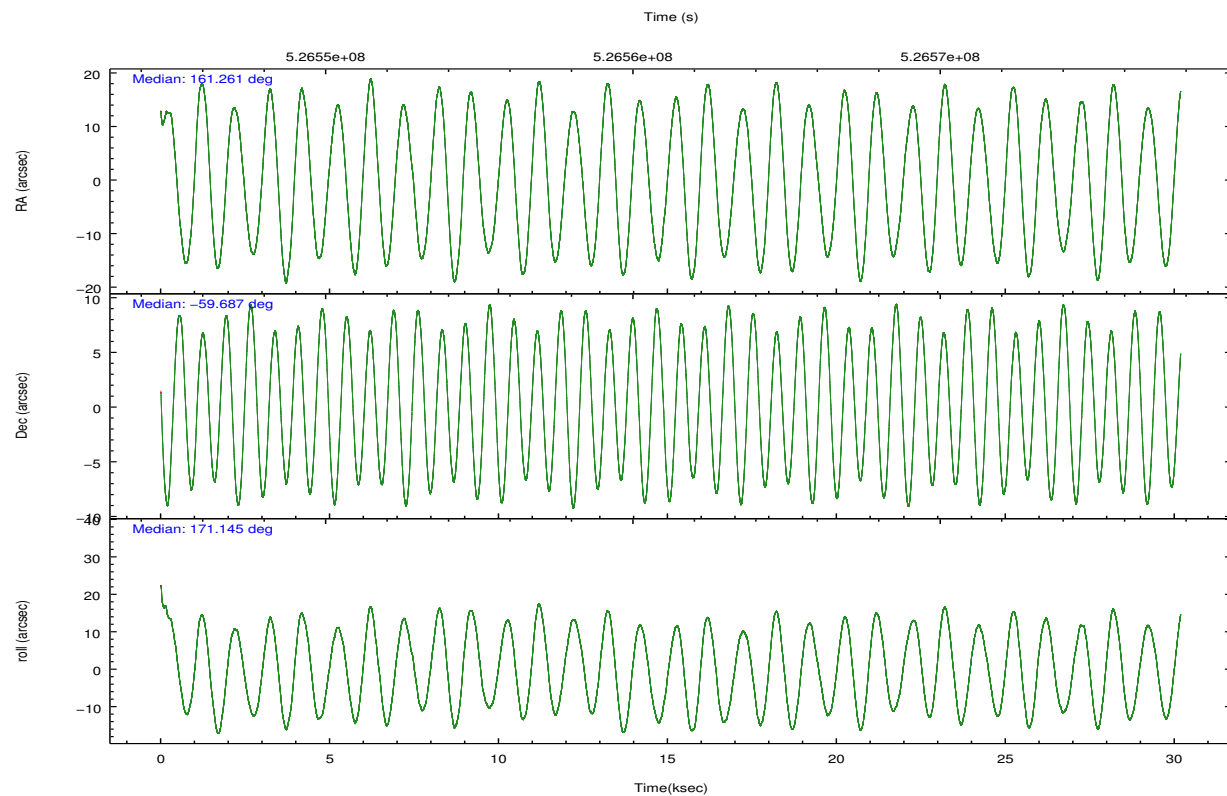
	ccd 7
level 1 events	62450
rejected events	15275
rejected %	24%

	ccd 7
grade 0 events	9937
	15%
grade 1 events	156
	0%
grade 2 events	10926
	17%
grade 3 events	5473
	8%
grade 4 events	5335
	8%
grade 5 events	3547
	5%
grade 6 events	15505
	24%
grade 7 events	11571
	18%

2.2 Compared Parameters

Parameter	Planned	Actual	Parameter	Planned	Actual
Instrument	ACIS	ACIS	Obspar format version number	7	7
Detector	ACIS-7	ACIS-7	Obspar file type	PREDICTED	ACTUAL
Grating	NONE	NONE	Obspar update status	NONE	UPDATED
Data mode	FAINT	FAINT	Number of optional ACIS chips dropped	0	0
Observation mode	POINTING	POINTING	On-chip summing requested	N	N
[deg] Pointing RA	161.311273	161.2608567246679	Subarray requested	CUSTOM	1/8
[deg] Pointing Dec	-59.676550	-59.68681317197893	Subarray start row	449	449
[deg] Pointing Roll	171.039944	171.1530485250337	Subarray row count	128	128
[s] Window start time (MET)	526521667.184000	526521667.184000	Alternating exposures requested	N	N
[s] Window stop time (MET)	527212867.184000	527212867.184000	[s] Primary exposure time	0.000000	0.4
[mm] SIM focus pos	-0.684267	-0.6828225247311905			
[mm] SIM defocus	0	0.001444936568705701			
[mm] SIM translation stage pos	-190.132523	-190.1425803651734			
[mm] SIM translation stage offset	0	0.01005778216563158			
[s] Observation start time (MET)	526546336.184000	526545521.77554			
Observation start date	2014-09-08T06:51:09	2014-09-08T06:38:41			
[s] Observation end time (MET)	526576336.184000	526576888.31478			
Observation end date	2014-09-08T15:11:09	2014-09-08T15:21:28			
Read mode	TIMED	TIMED			

2.3 Aspect

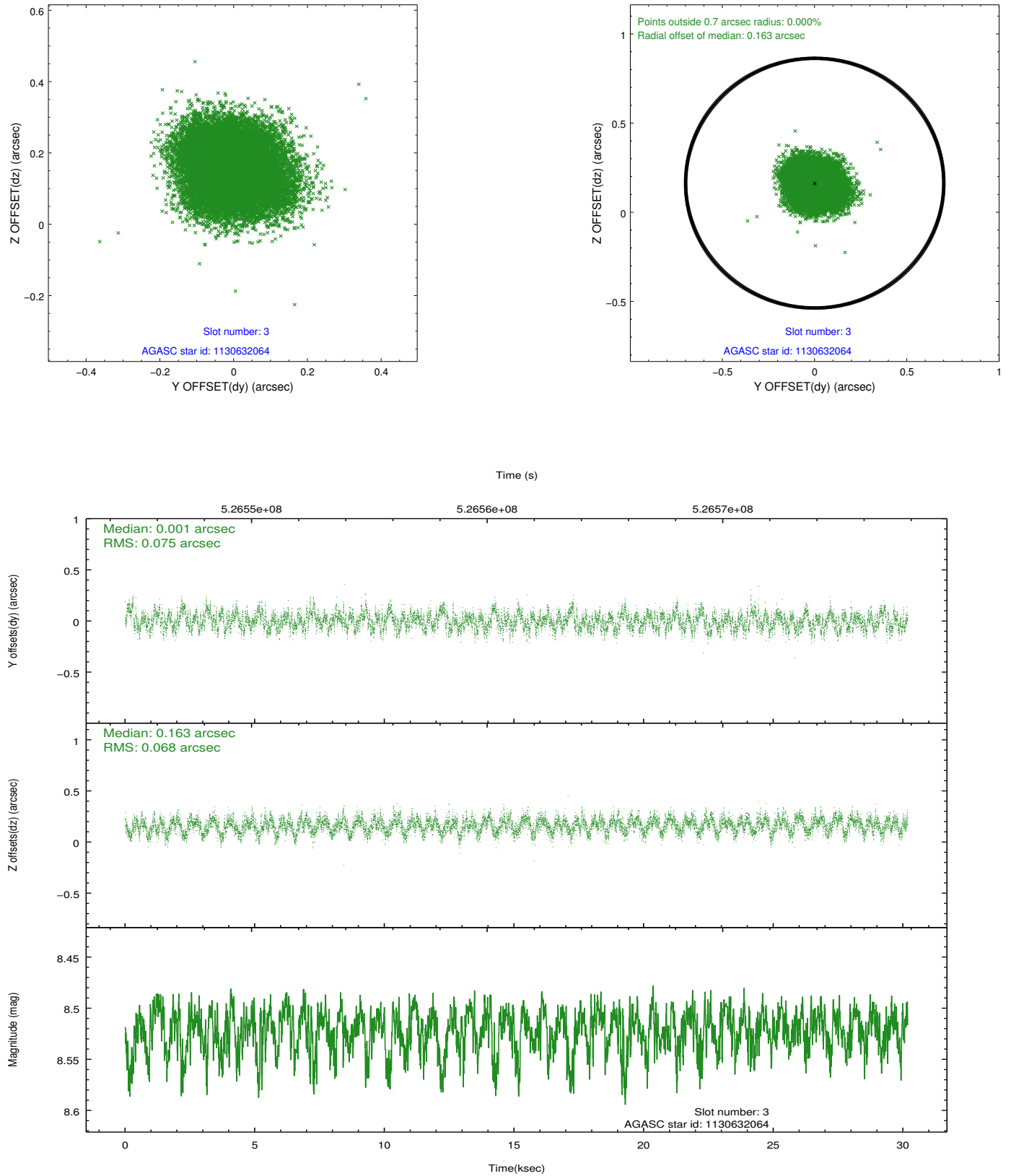


Slot Statistics

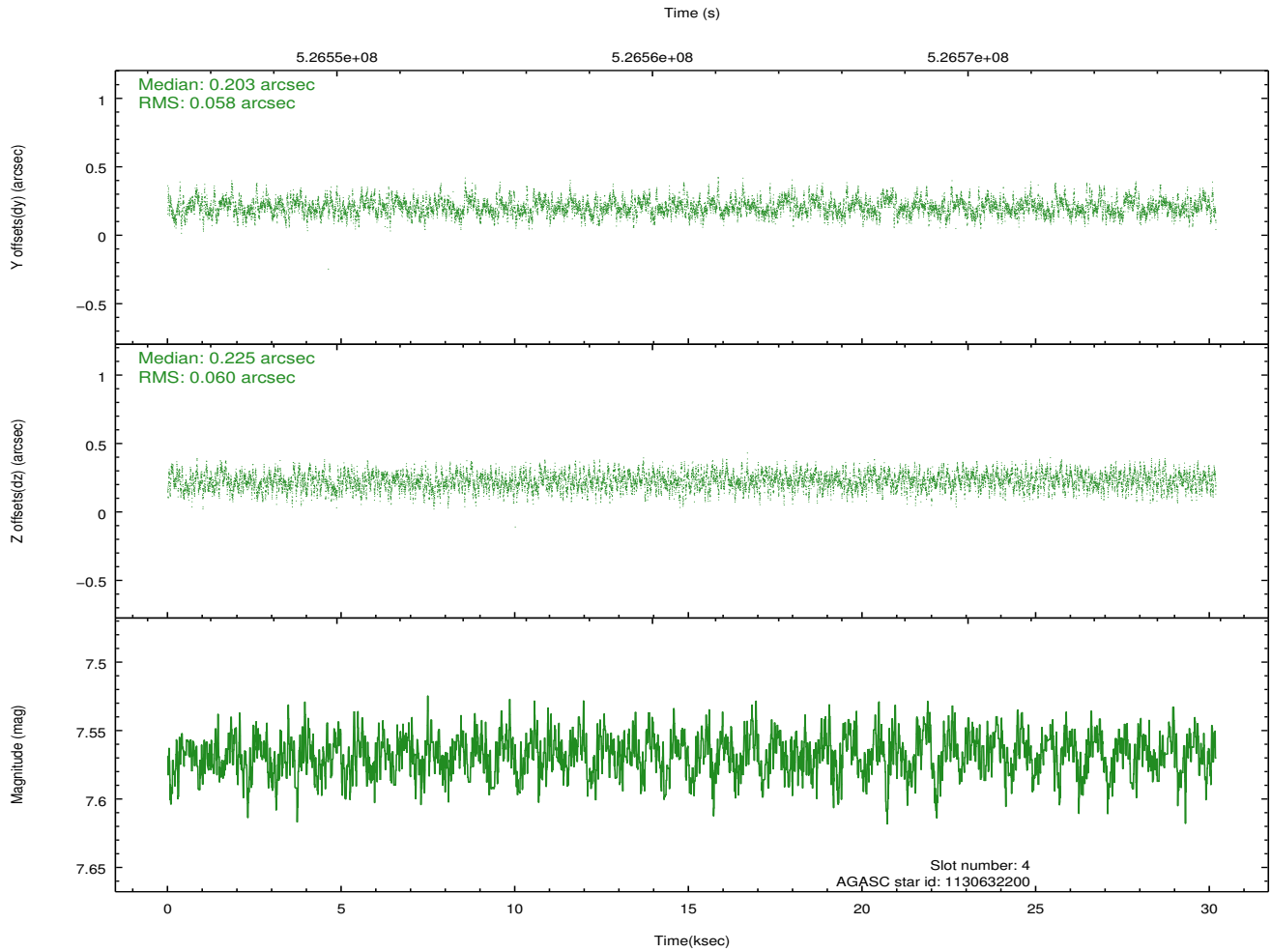
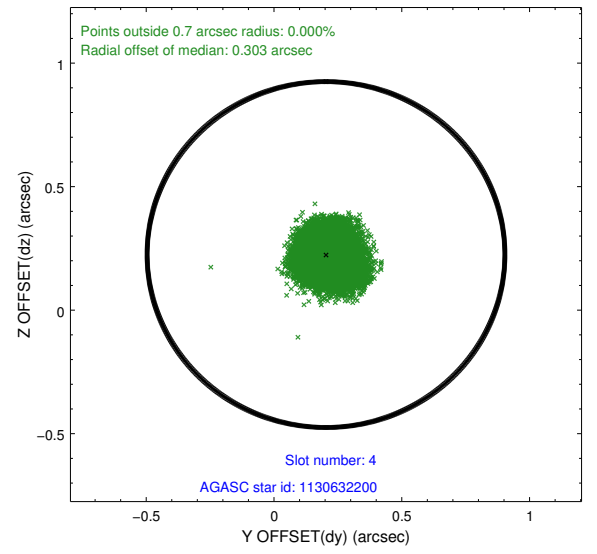
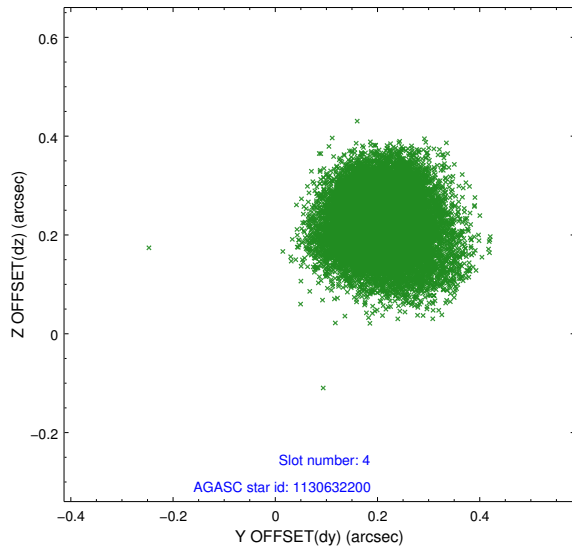
slot	status	id	mag	n_pts	med_dy	med_dz	dr1	dr2	ra	dec	mean_y	mean_z
0	FID	ACIS-S-1	7.04	7361	0.059	0.035	0.015	0.054	0.000000	0.000000	916.45	-1739.83
1	FID	ACIS-S-2	6.94	7362	-0.255	-0.135	0.010	0.028	0.000000	0.000000	-779.74	-1744.49
2	FID	ACIS-S-4	7.03	7361	0.170	0.106	0.009	0.027	0.000000	0.000000	2133.89	164.26
3	GUIDE	1130632064	8.52	14719	0.001	0.163	0.110	0.172	160.452382	-59.130948	1871.94	-1682.62
4	GUIDE	1130632200	7.57	14722	0.203	0.225	0.090	0.143	161.433843	-59.407820	-70.43	-990.29
5	GUIDE	1130643264	6.67	14724	-0.068	-0.293	0.094	0.141	160.322990	-59.676912	1772.16	294.14
6	GUIDE	1174021440	8.41	14716	-0.227	-0.222	0.092	0.152	160.869011	-60.314711	421.11	2394.24
7	GUIDE	1174033752	8.44	14715	0.092	0.137	0.086	0.142	162.418977	-60.164599	-2235.71	1442.99

2.4 Star Slots

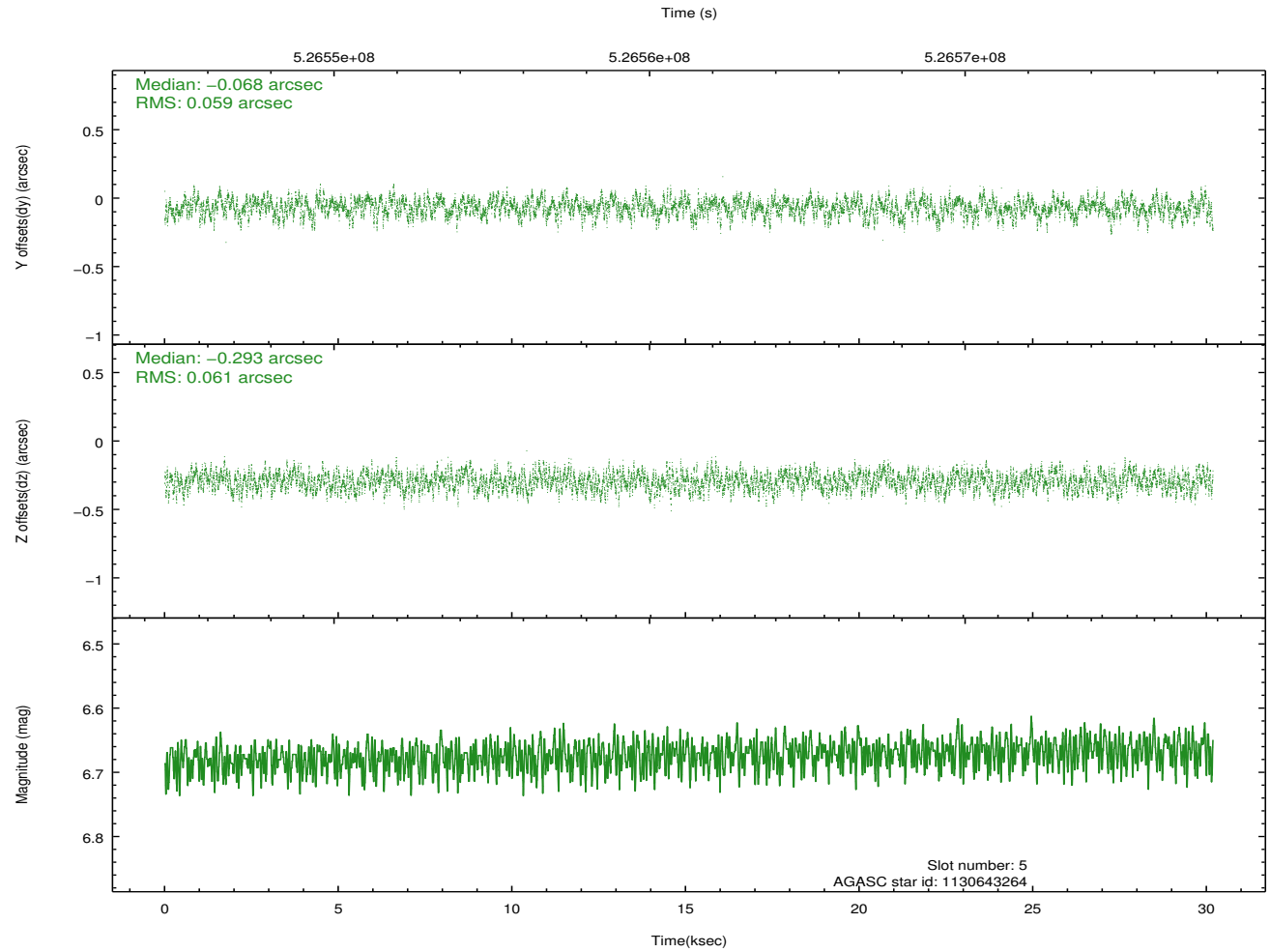
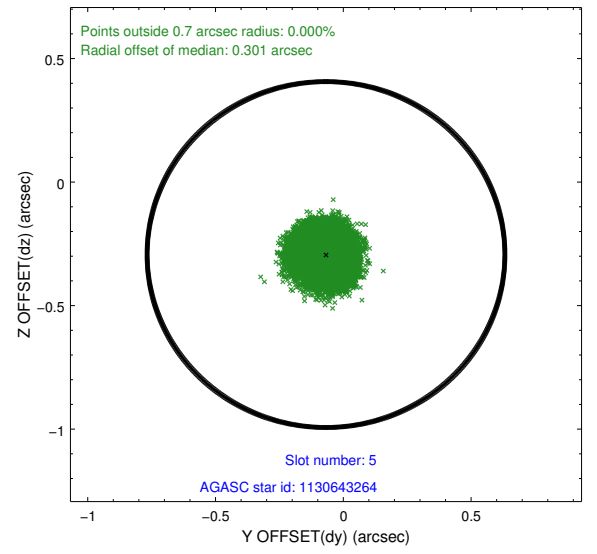
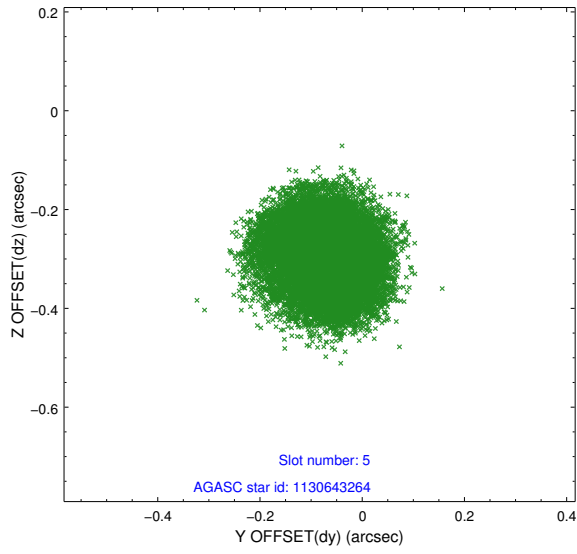
2.4.1 Slot 3



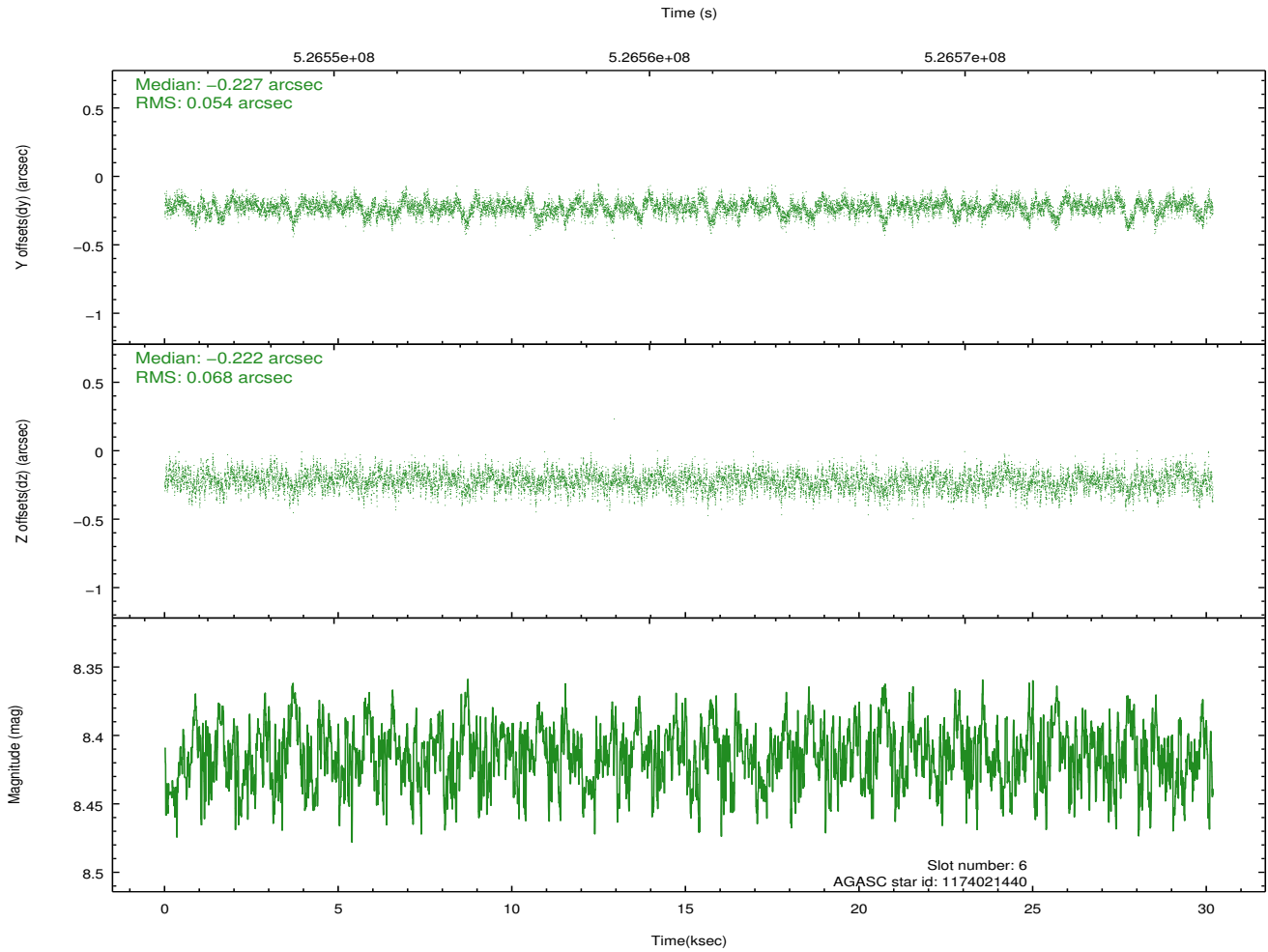
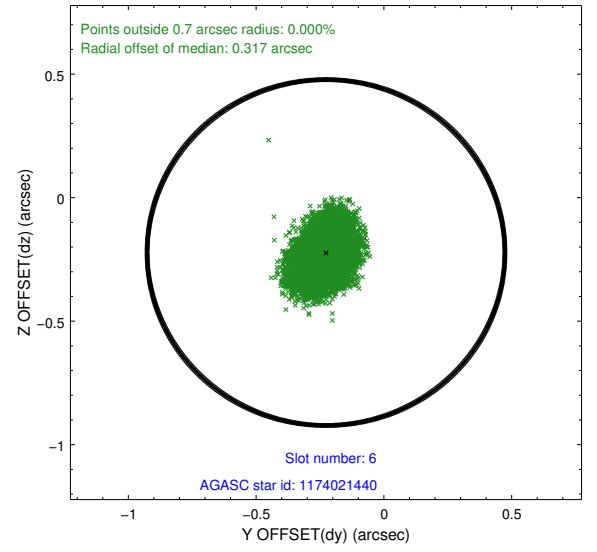
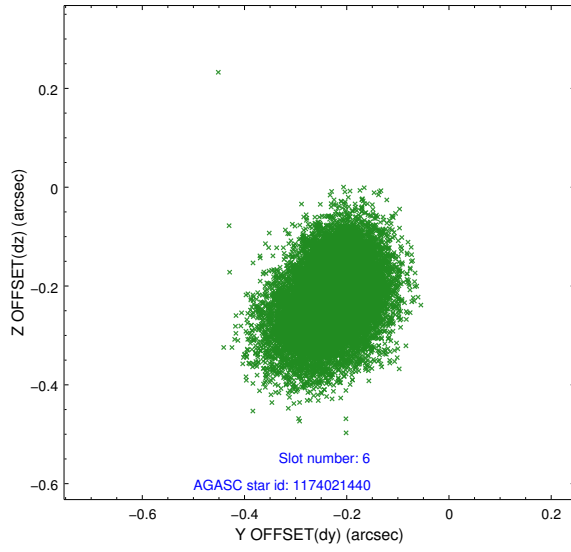
2.4.2 Slot 4



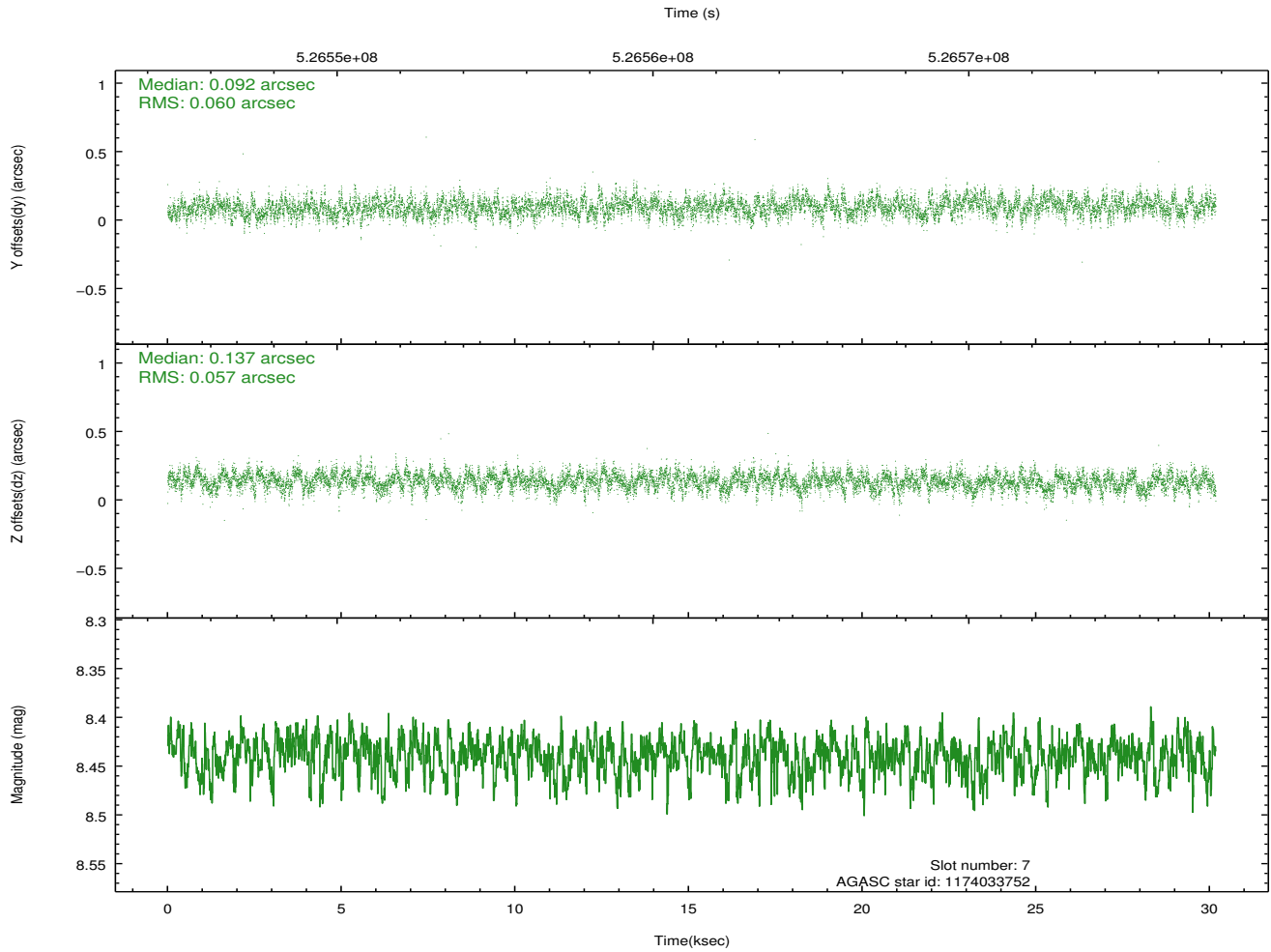
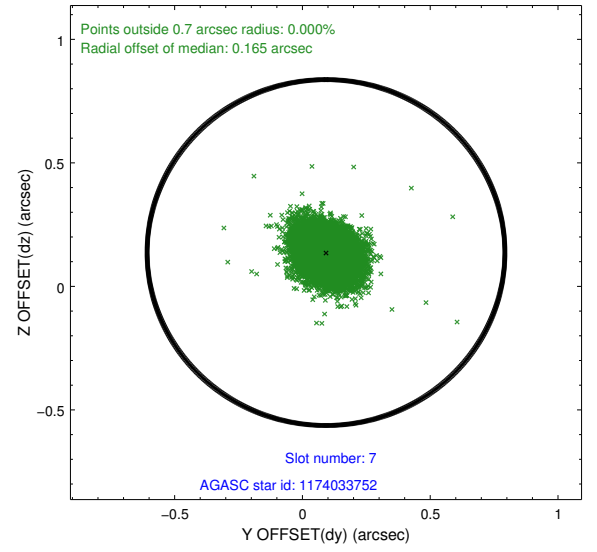
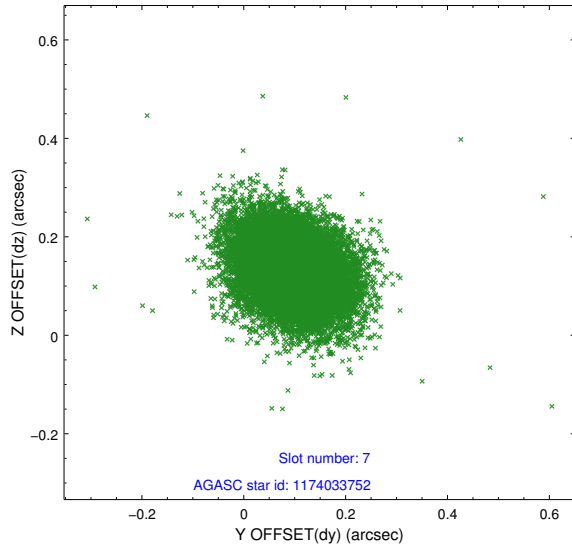
2.4.3 Slot 5



2.4.4 Slot 6

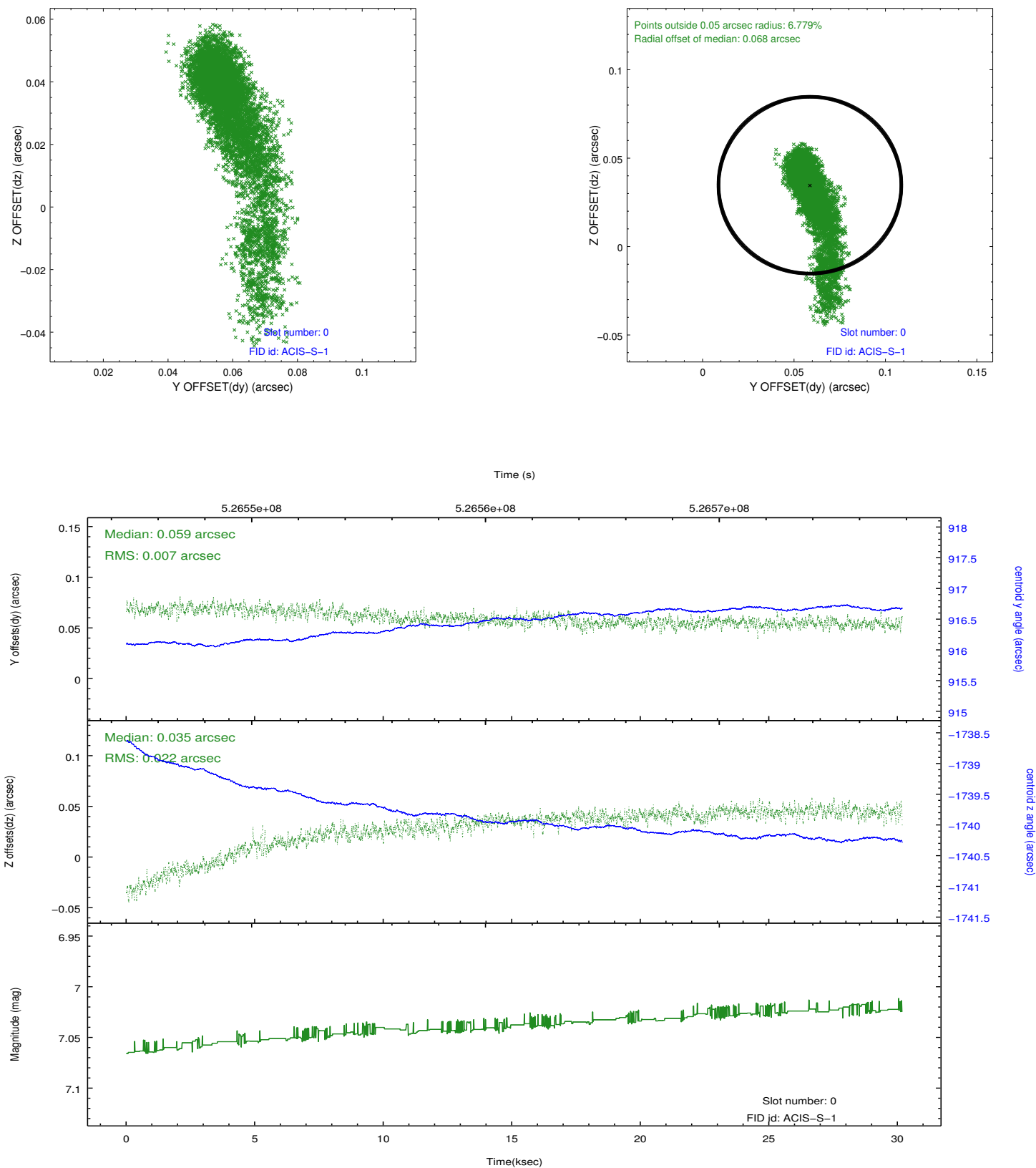


2.4.5 Slot 7

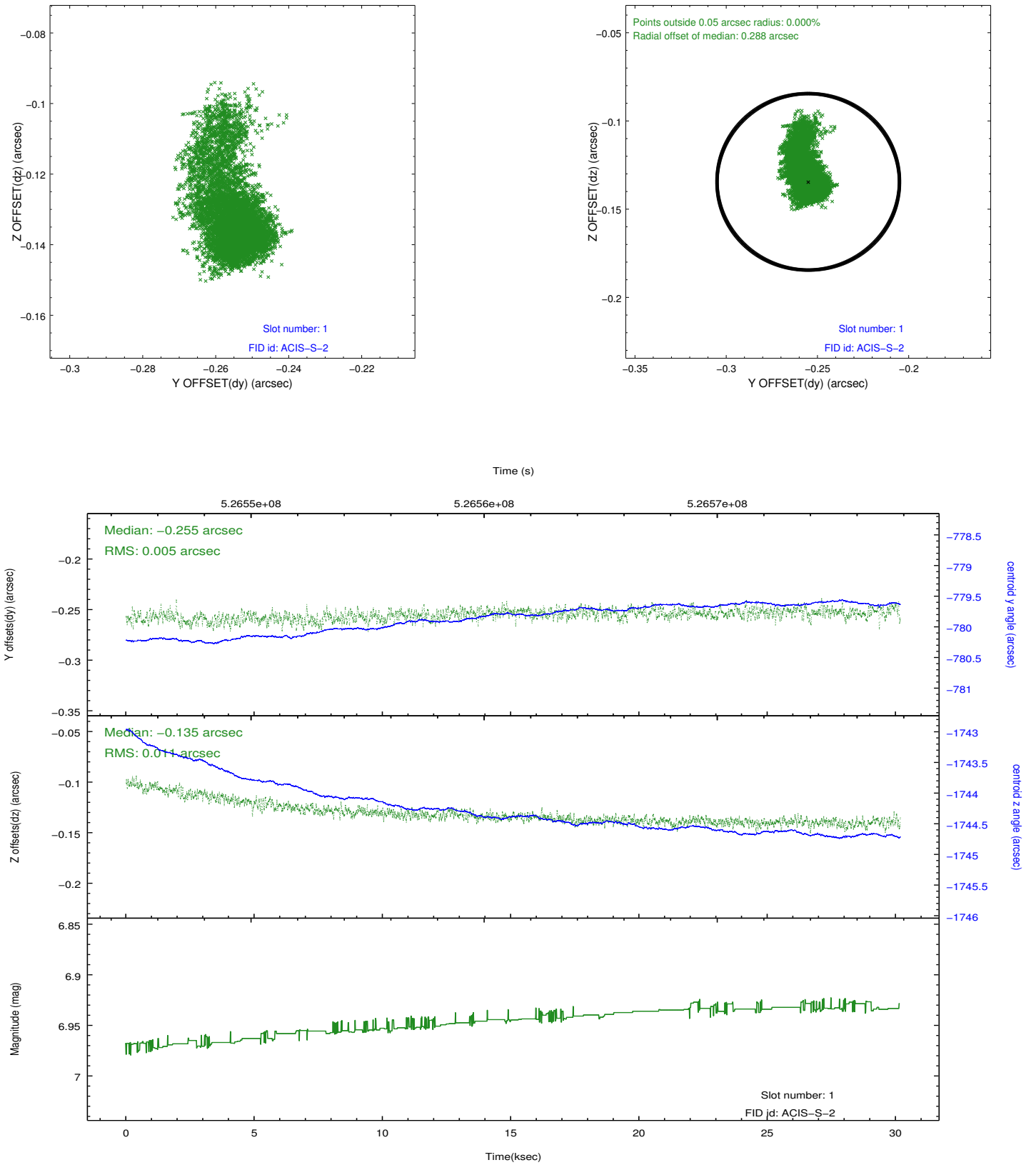


2.5 FID Slots

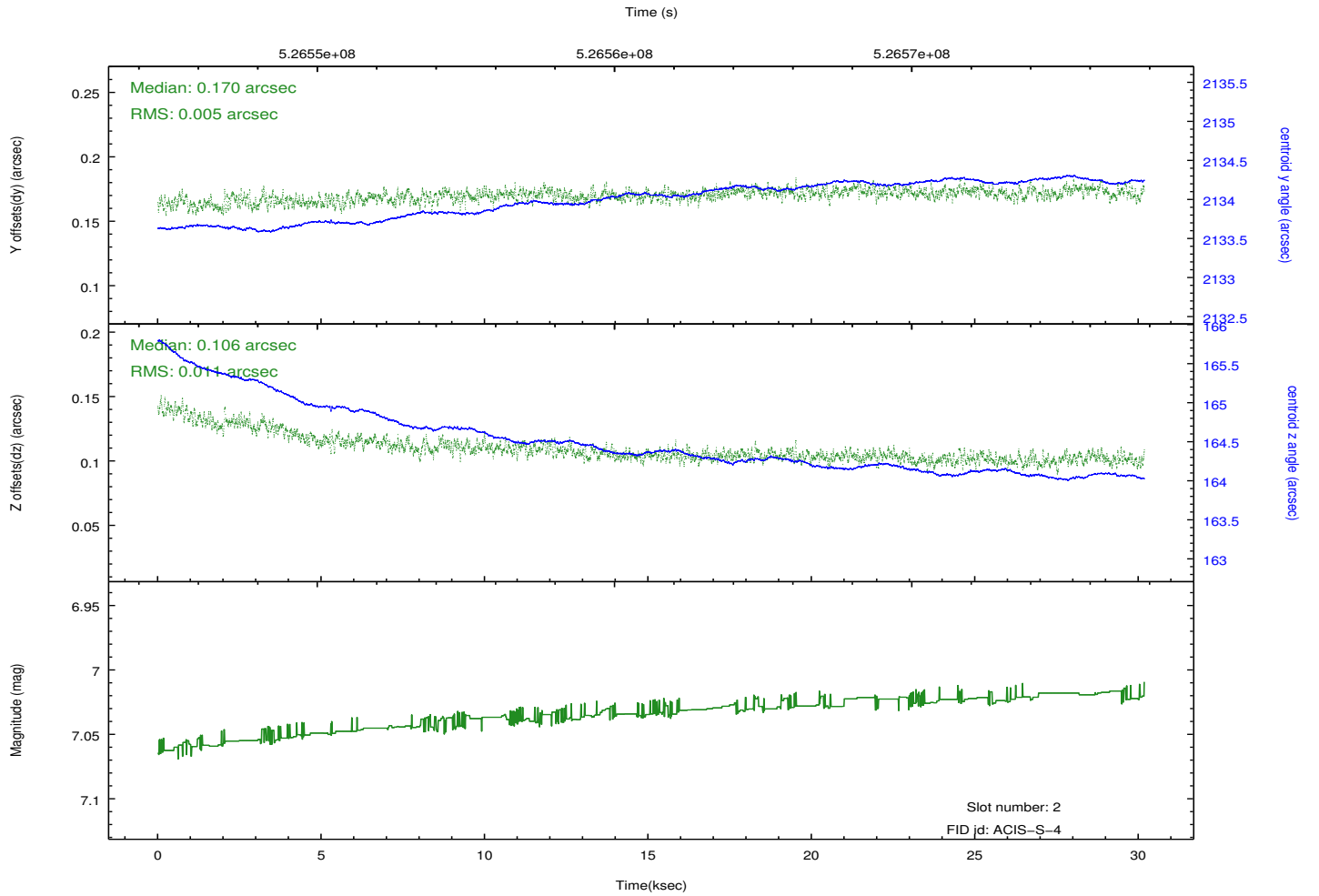
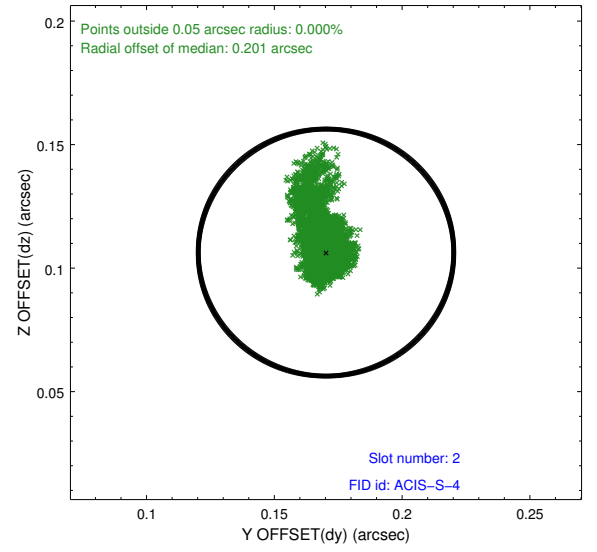
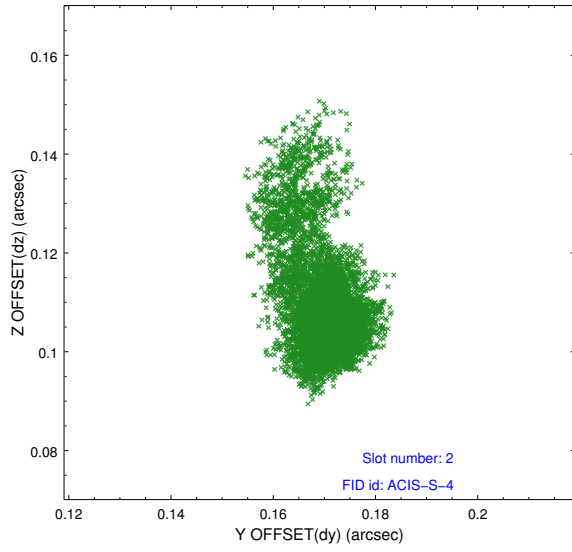
2.5.1 Slot 0



2.5.2 Slot 1



2.5.3 Slot 2



A Summary

A.1 Status

V&V Scientist	Joy Nichols
V&V Date (YYYY-MM-DD)	2014.09.09
V&V Edition	1
V&V Disposition and Status	OK
V&V Charge Time	30.068695062041

A.2 Comments

Central source piled up.