

# V&V Reference Report

## L2 ASCDS Version : 7.6.9

Observation 1553 - L2 Version 001  
Chandra X-Ray Center

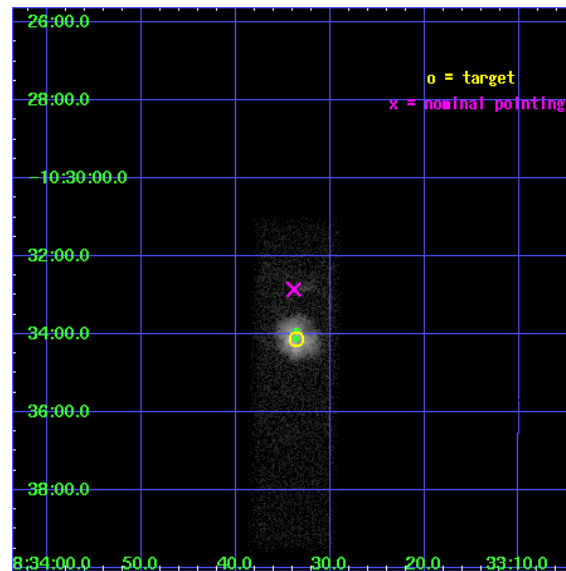
L2 Processing Date : Nov 15 2006

## Contents

<b>1</b>	<b>Front</b>	<b>2</b>
<b>2</b>	<b>OBI</b>	<b>3</b>
2.1	OBI . . . . .	3
2.1.1	Images . . . . .	3
2.1.2	Bias . . . . .	3
2.1.3	Parameters . . . . .	4
2.1.4	Events . . . . .	4
2.2	Compared Parameters . . . . .	5
2.3	Aspect . . . . .	6
2.4	Star Slots . . . . .	9
2.4.1	Slot 3 . . . . .	9
2.4.2	Slot 4 . . . . .	10
2.4.3	Slot 5 . . . . .	11
2.4.4	Slot 6 . . . . .	12
2.4.5	Slot 7 . . . . .	13
2.5	FID Slots . . . . .	14
2.5.1	Slot 0 . . . . .	14
2.5.2	Slot 1 . . . . .	15
2.5.3	Slot 2 . . . . .	16
<b>3</b>	<b>Point Sources</b>	<b>17</b>
<b>A</b>	<b>Summary</b>	<b>18</b>
A.1	Status . . . . .	18
A.2	Comments . . . . .	18

# 1 Front

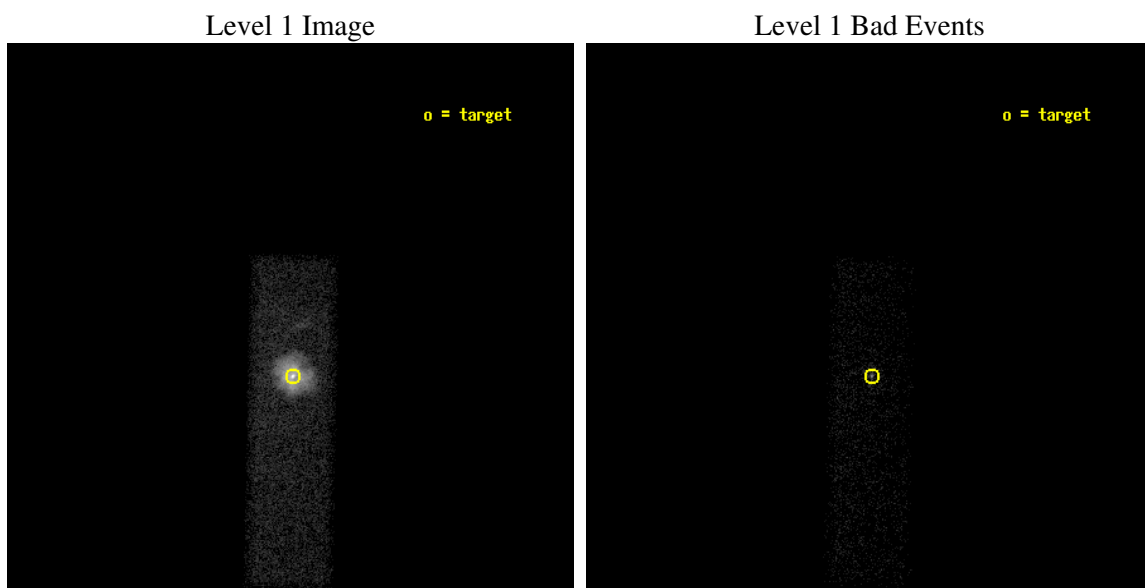
seq_num	590162
obs_id	1553
title	CALIBRATION OBSERVATIONS OF THE STANDARD CANDLE G21.5-09
observer	Dr. CXC Calibration
object	G21.5-0.9 [Chip S3, T=120, Offsets=-1,0,0]
dtcycle	0
cycle	P
ra_targ	278.389583
dec_targ	-10.568528
ra_nom	278.39100907669
dec_nom	-10.54764578665
roll_nom	91.187547707605
revision	2
ontime	10240.79996185
livetime	9741.0824330354
ontime7	10240.79996185
l2events	42793



## 2 OBI

### 2.1 OBI

#### 2.1.1 Images



#### 2.1.2 Bias

Chip 7



### 2.1.3 Parameters

obi_num	0
ascdsver	7.6.9
caldbver	3.2.4
date	2006-11-15T17:01:20
revision	2

sched_exp_time	10000.000000
ontime	10788.720807344
ontime7	10788.720807344
l1events	57845

### 2.1.4 Events

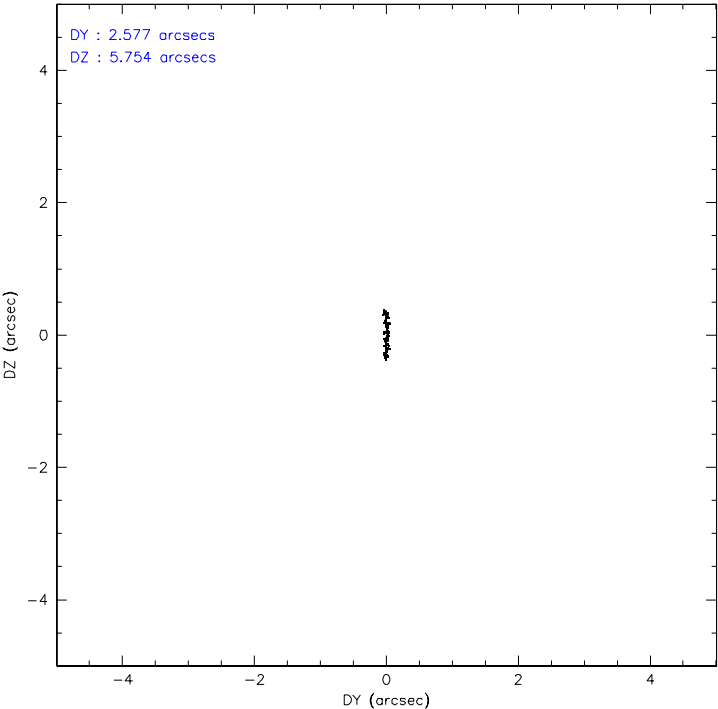
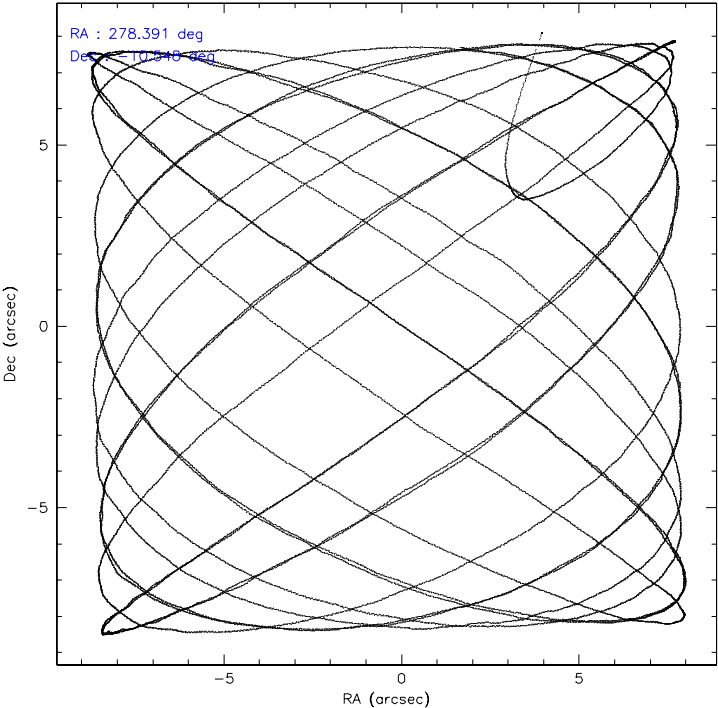
	<b>ccd 7</b>
level 1 events	57845
rejected events	14707
rejected %	25%

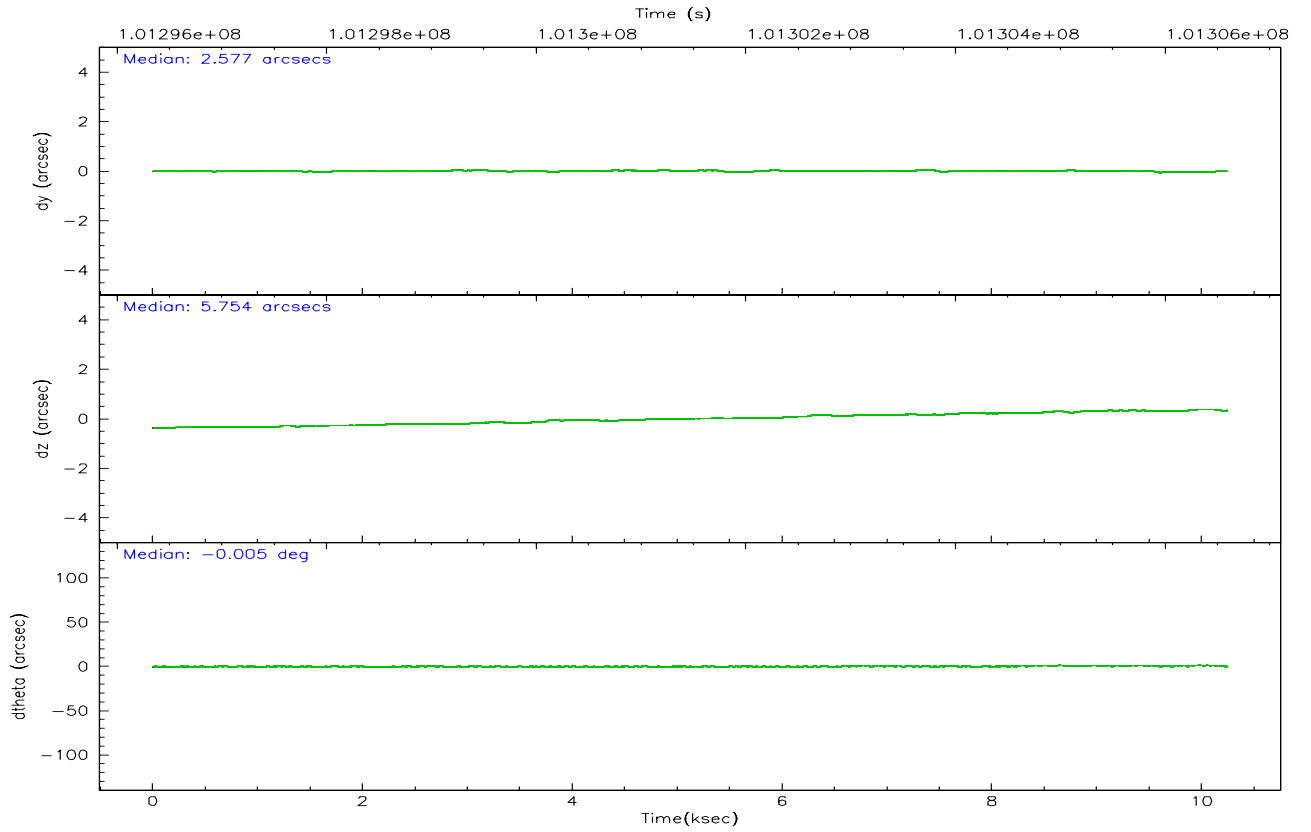
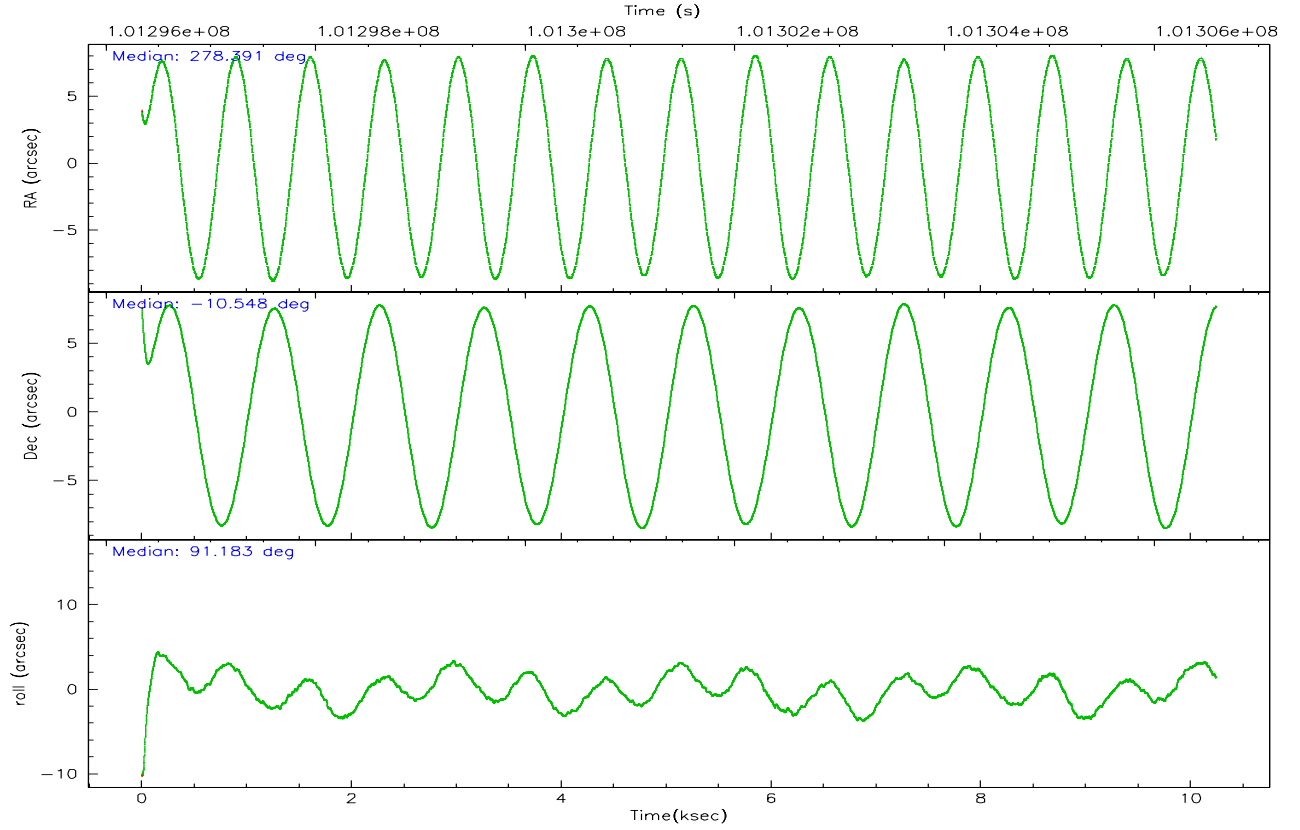
	<b>ccd 7</b>
grade 0 events	7687
	13%
grade 1 events	32
	0%
grade 2 events	11785
	20%
grade 3 events	4592
	7%
grade 4 events	4332
	7%
grade 5 events	1922
	3%
grade 6 events	15798
	27%
grade 7 events	11697
	20%

## 2.2 Compared Parameters

Parameter	Planned	Actual	Parameter	Planned	Actual
Instrument	ACIS	ACIS	Obspar format version number	6	6
Detector	ACIS-7	ACIS-7	Obspar file type	PREDICTED	ACTUAL
Grating	NONE	NONE	Obspar update status	NONE	UPDATED
Data mode	VFAINT	VFAINT	Number of optional ACIS chips dropped	0	0
Observation mode	POINTING	POINTING	On-chip summing requested	N	N
Pointing RA	278.405564	278.3910090766947	Subarray requested	CUSTOM	1/4
Pointing Dec	-10.570912	-10.54764578664953	Subarray start row	384	384
Pointing Roll	91.033611	91.18754770760484	Subarray row count	256	256
Window start time	98582464.184000	98582464.184000	Alternating exposures requested	N	N
Window stop time	102297664.184000	102297664.184000	Primary exposure time	0.000000	0.8
SIM focus pos (mm)	-0.684267	-0.6828225247311905			
SIM defocus (mm)	0	0.001444936568705701			
SIM translation stage pos (mm)	-190.132523	-190.1425803651734			
SIM translation stage offset (mm)	0	0.01005778216563158			
Observation start time	101296590.184000	101295581.38051			
Observation start date	2001-03-18T09:55:26	2001-03-18T09:39:41			
Observation end time	101306590.184000	101307433.45597			
Observation end date	2001-03-18T12:42:06	2001-03-18T12:57:13			
Read mode	TIMED	TIMED			

2.3 Aspect





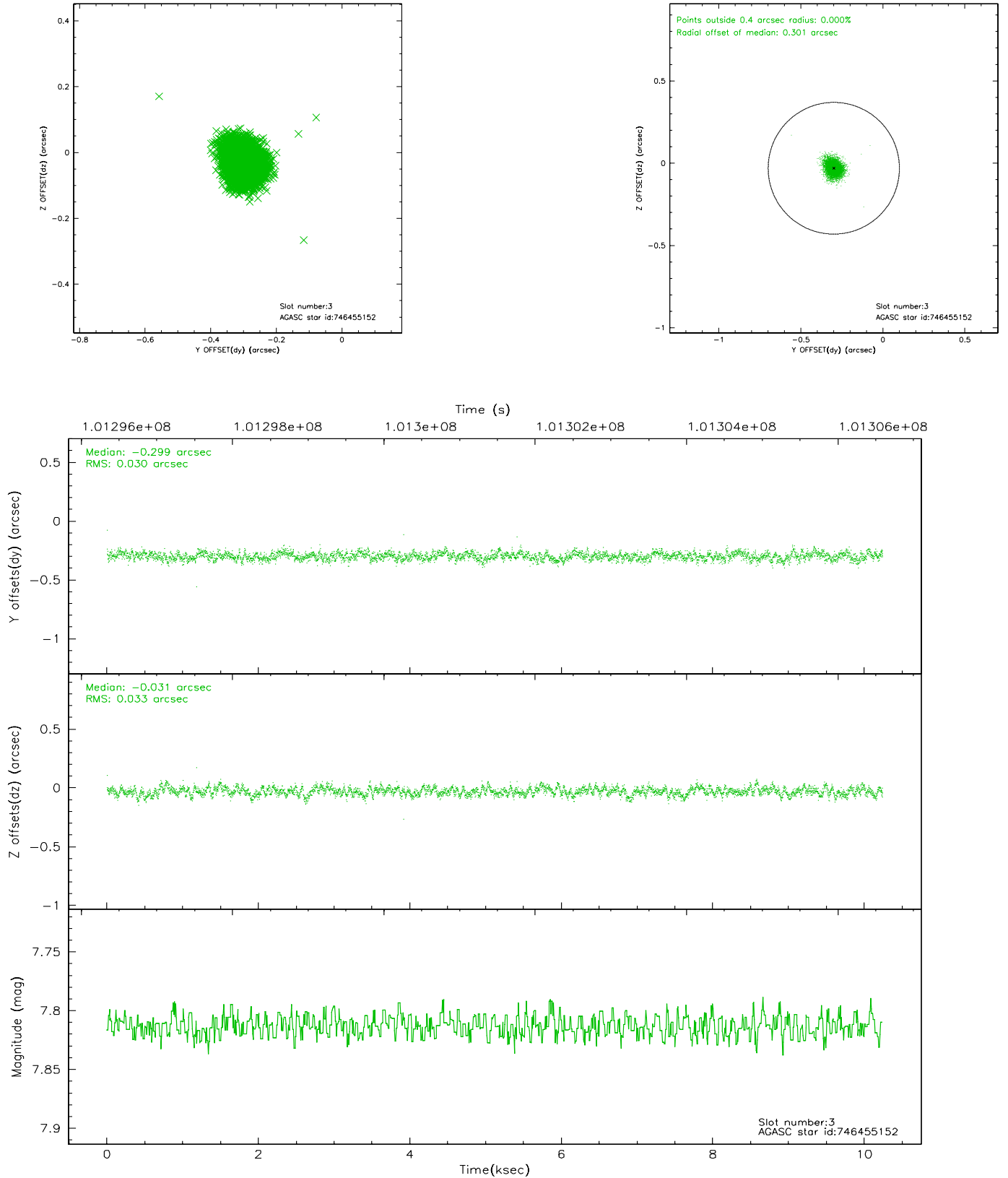
### Slot Statistics

slot	status	id	mag	n_pts	med_dy	med_dz	dr1	dr2	ra	dec	mean_y	mean_z
0	FID	ACIS-S-2	7.11	2499	-0.024	0.020	0.008	0.012	0.000000	0.000000	-755.19	-1726.83
1	FID	ACIS-S-4	7.20	2499	-0.062	0.006	0.006	0.011	0.000000	0.000000	2157.77	181.18
2	FID	ACIS-S-5	7.24	2498	0.056	-0.017	0.007	0.011	0.000000	0.000000	-1807.33	175.31
3	GUIDE	746455152	7.81	4996	-0.299	-0.031	0.047	0.076	278.447893	-9.976732	2136.25	-188.70
4	GUIDE	746462456	8.38	4993	0.152	-0.130	0.062	0.097	278.652171	-10.530173	131.58	-875.71
5	GUIDE	746462392	8.54	4995	0.157	0.129	0.080	0.126	279.038421	-10.890715	-1193.13	-2216.59
6	GUIDE	746455112	8.93	4996	0.116	-0.007	0.070	0.113	278.266531	-10.703234	-467.10	499.58
7	GUIDE	746460272	8.92	4995	-0.127	0.043	0.073	0.123	278.847488	-10.152127	1478.52	-1592.91

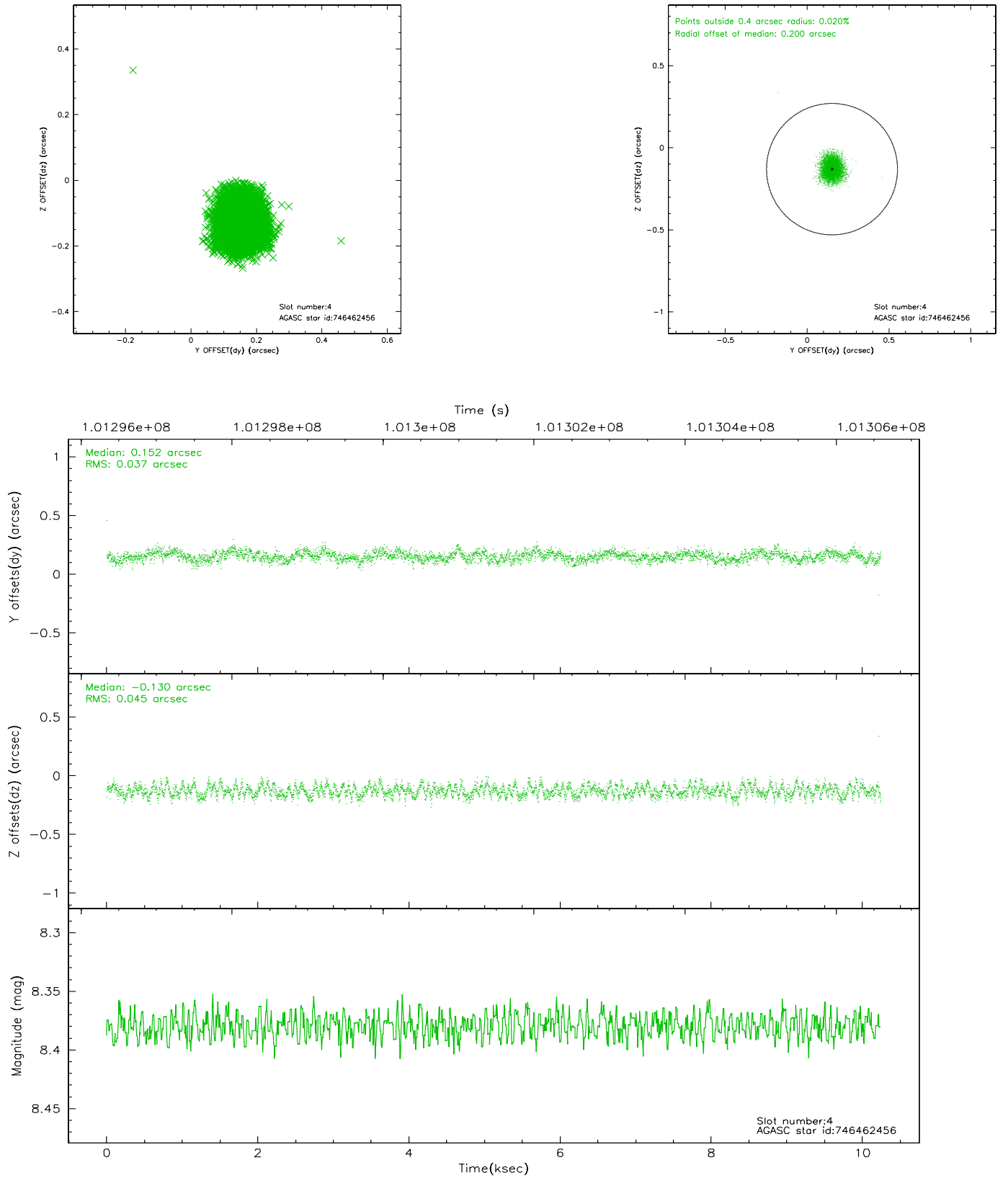


## 2.4 Star Slots

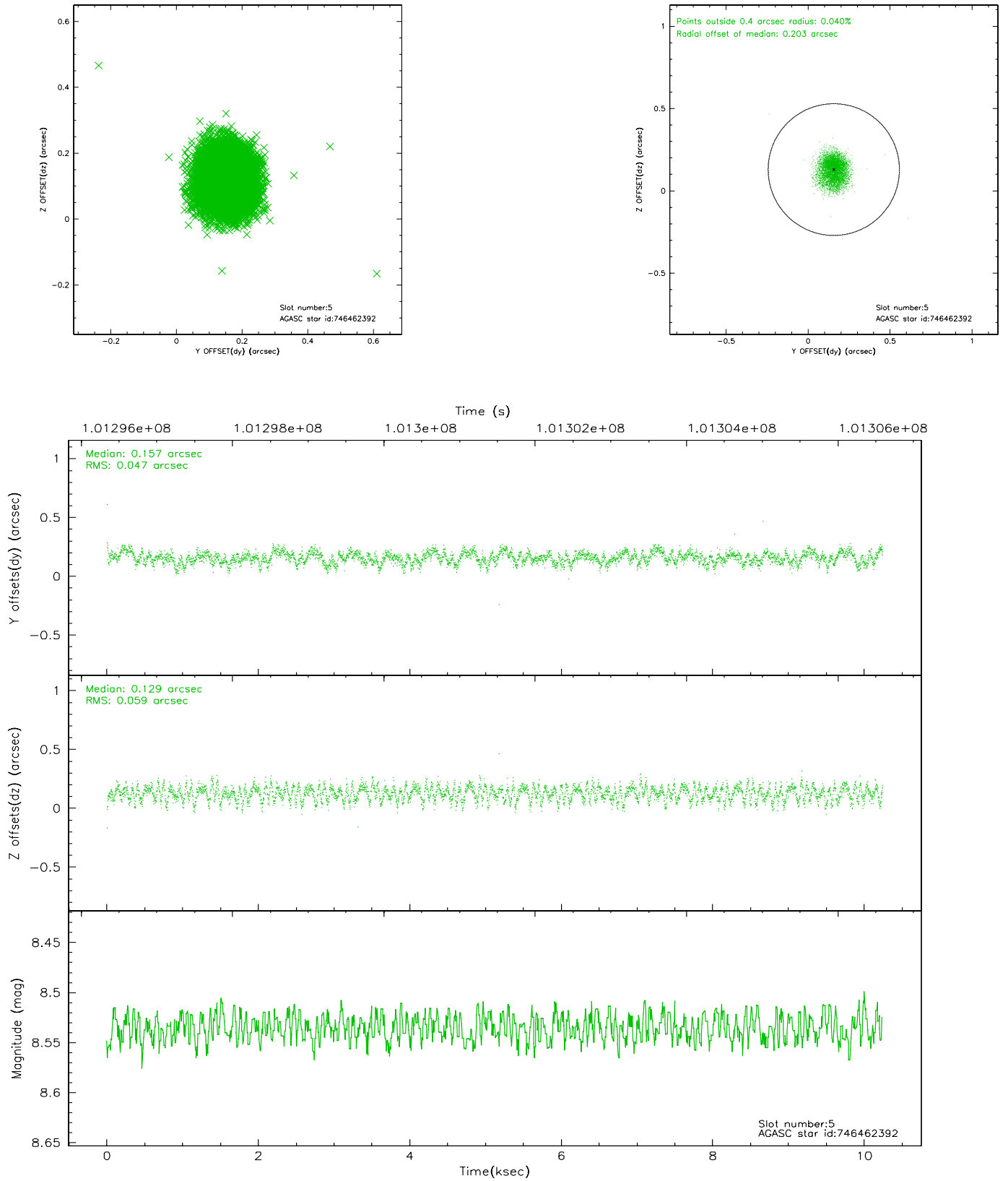
### 2.4.1 Slot 3



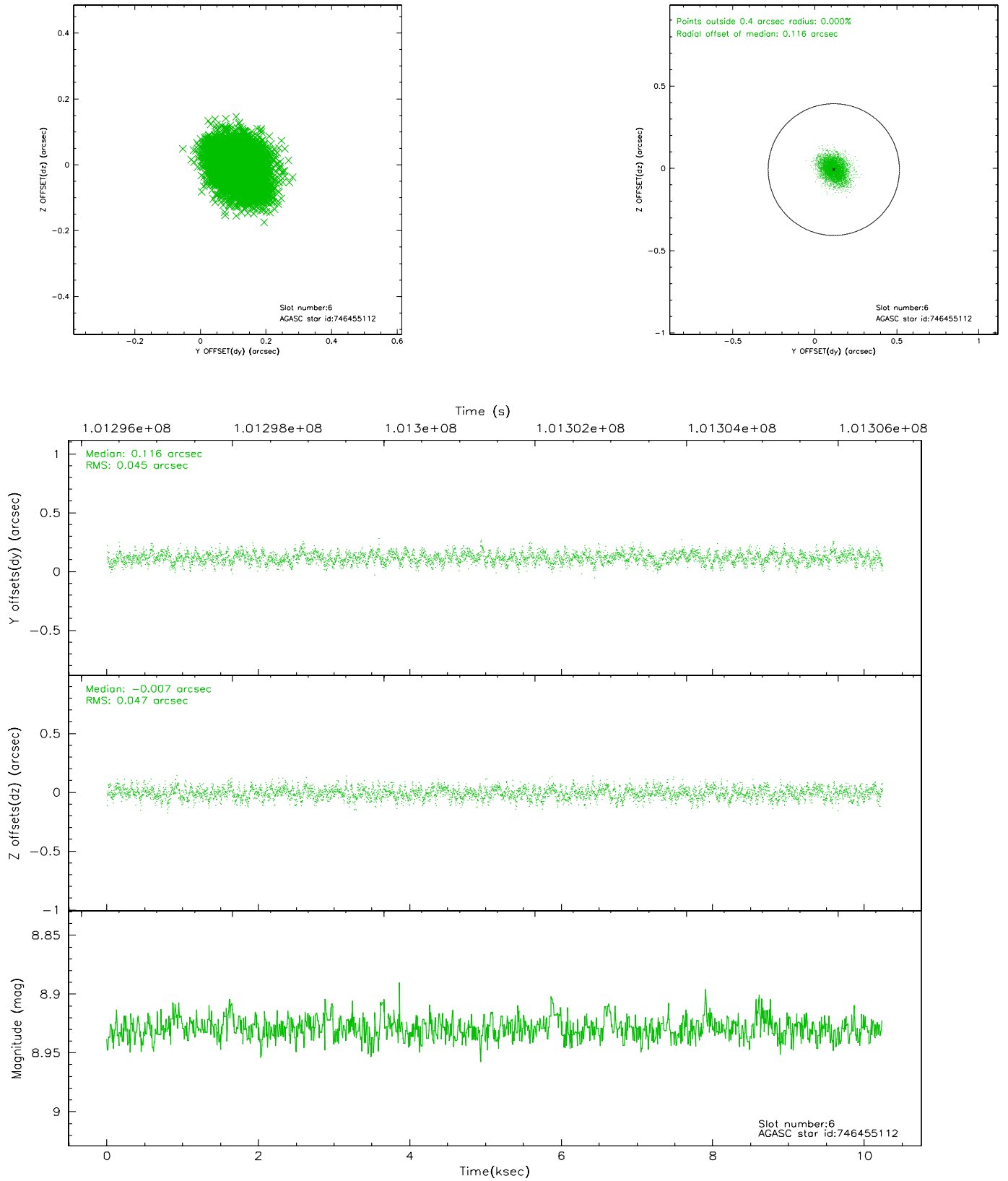
## 2.4.2 Slot 4



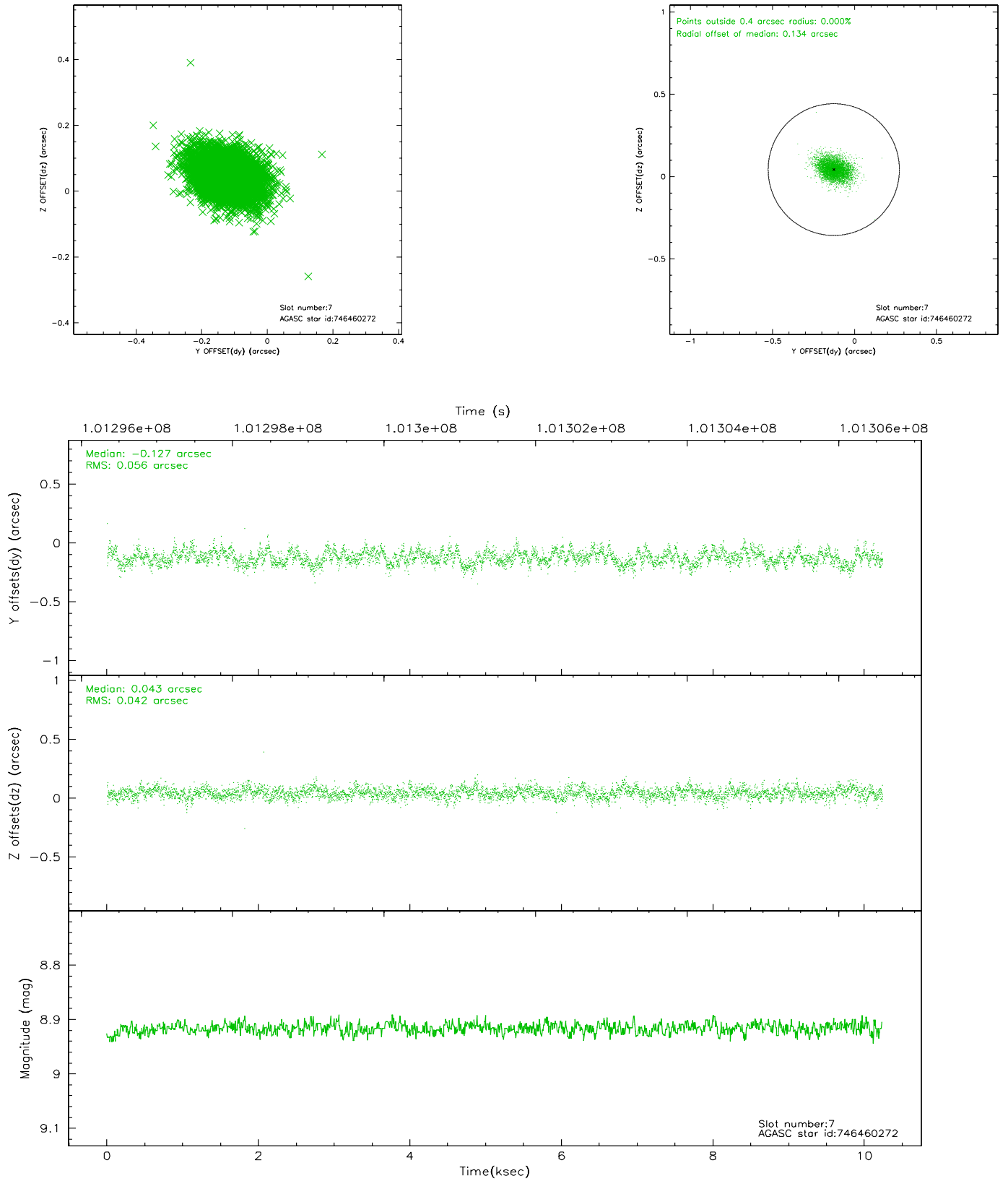
### 2.4.3 Slot 5



## 2.4.4 Slot 6

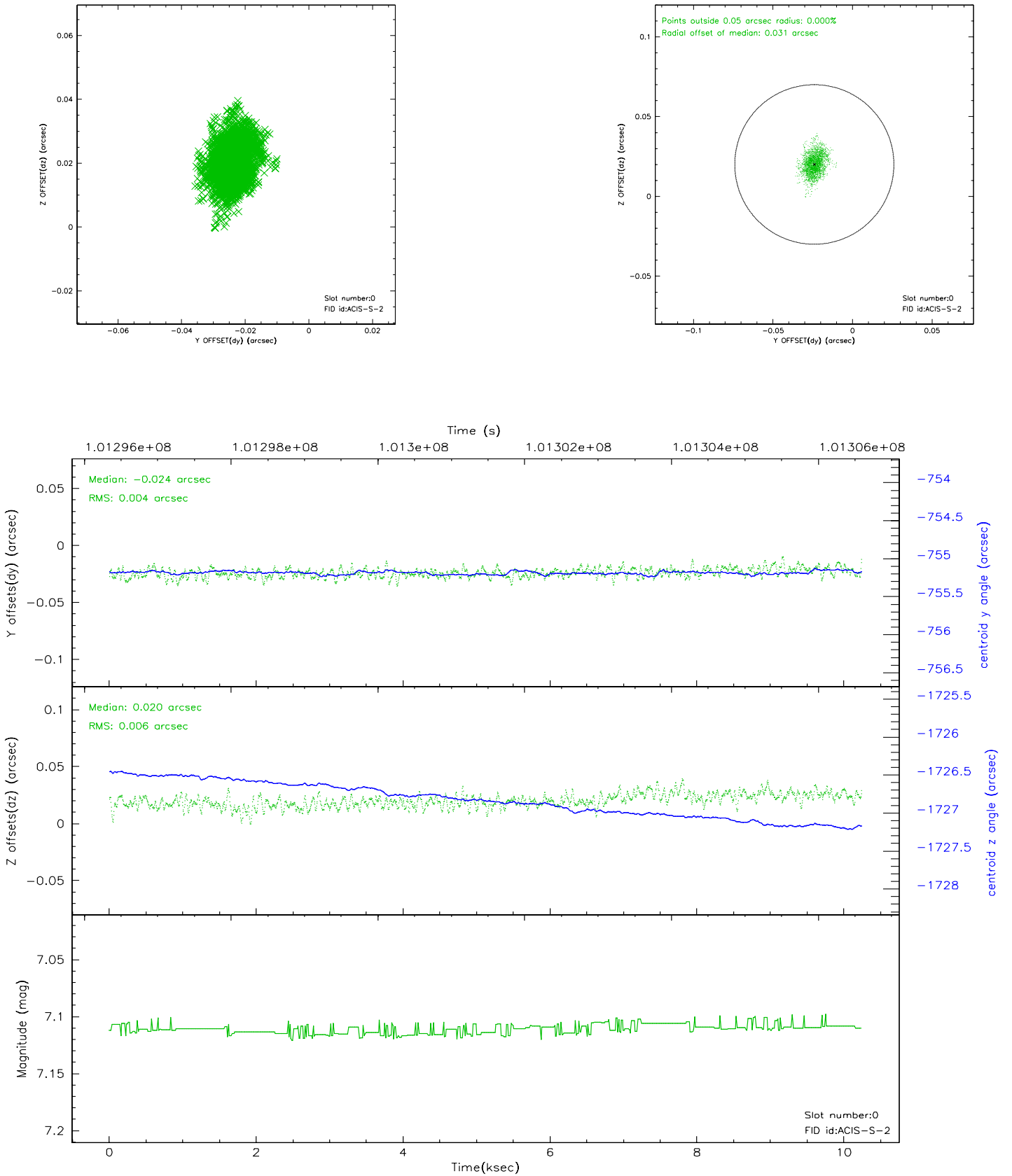


## 2.4.5 Slot 7

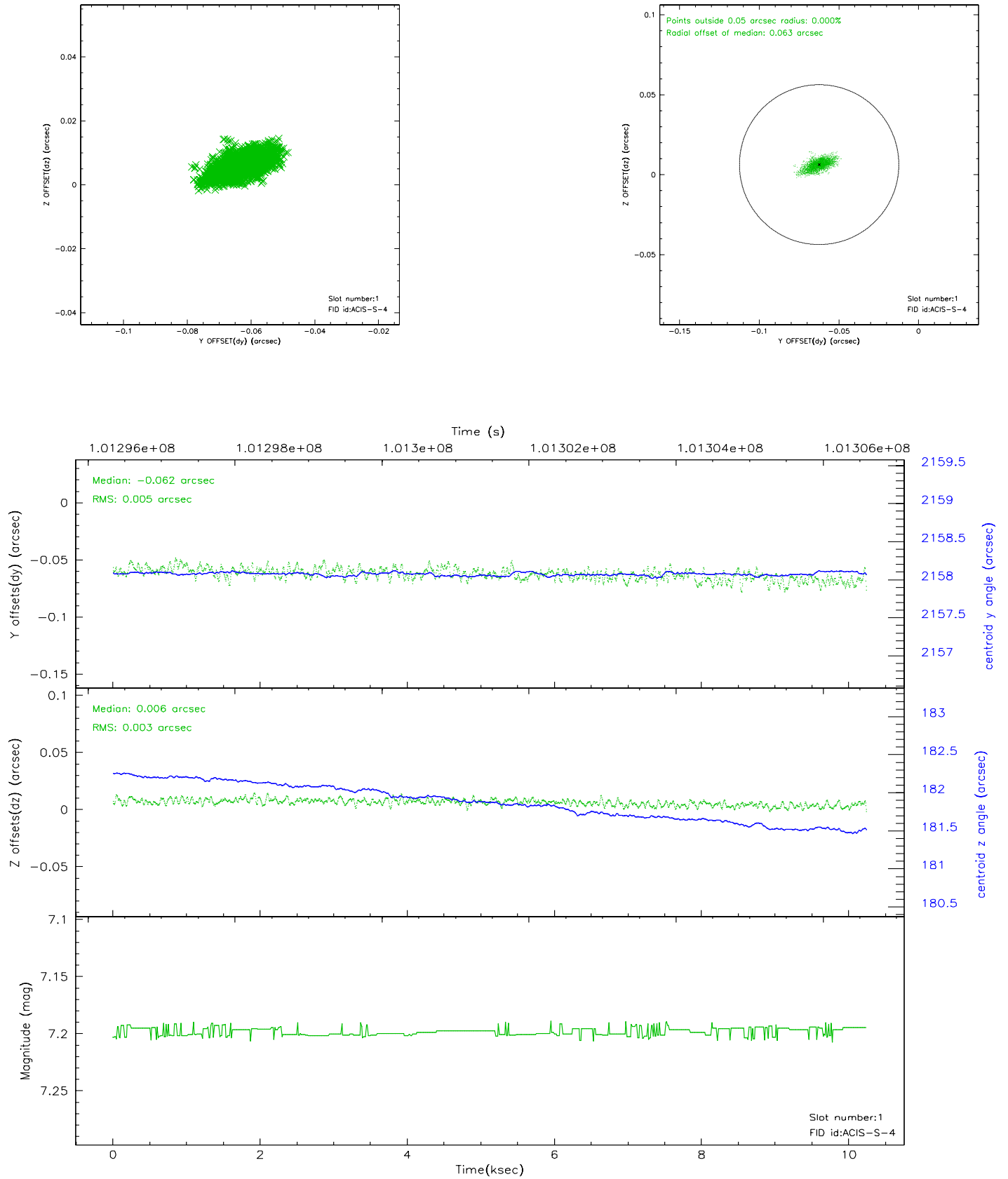


## 2.5 FID Slots

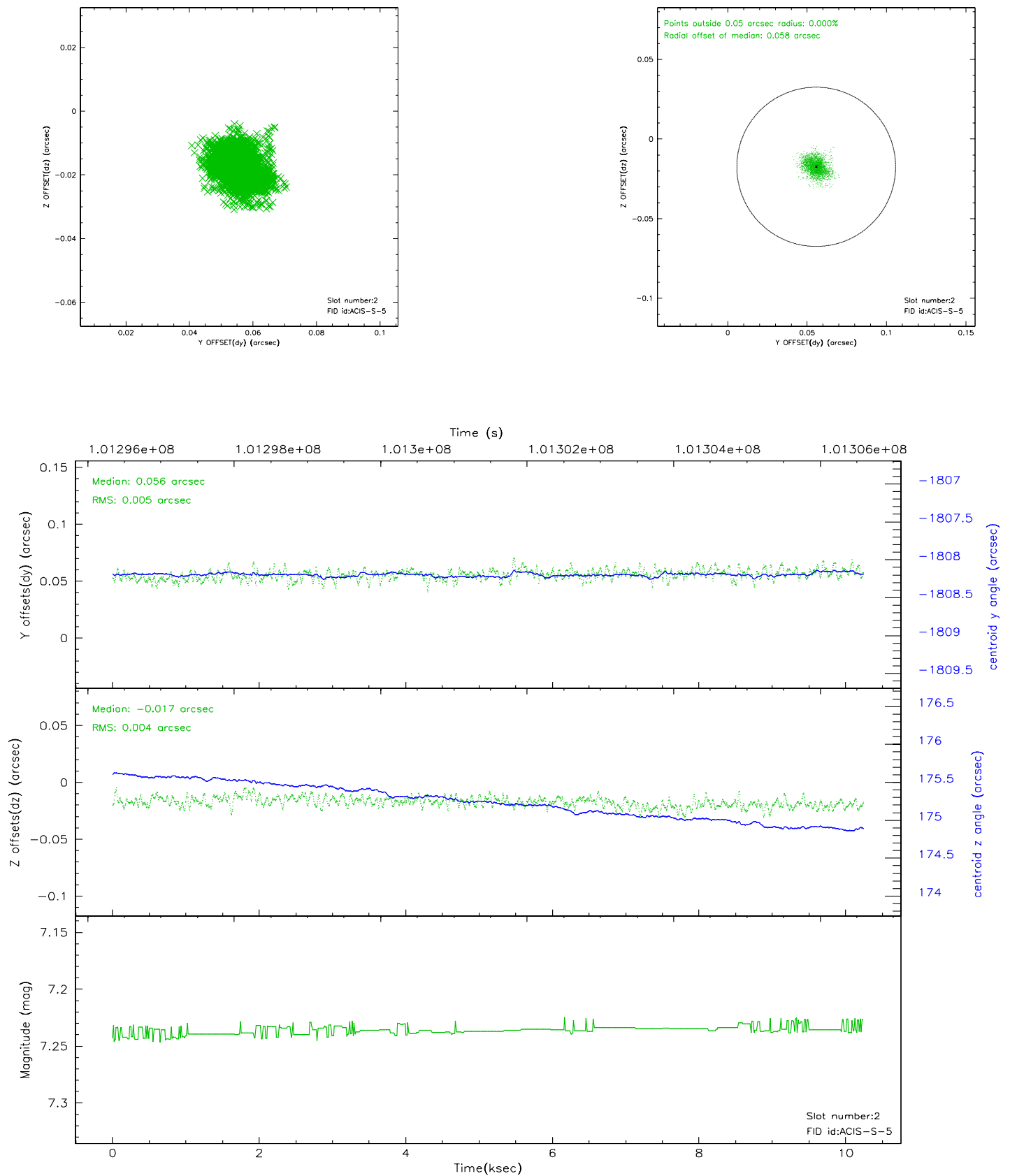
### 2.5.1 Slot 0



## 2.5.2 Slot 1



### 2.5.3 Slot 2





### 3 Point Sources

## A Summary

### A.1 Status

V&V Scientist	Jen Lauer
V&V Date (YYYY-MM-DD)	2006.11.15
V&V Edition	1
V&V Disposition and Status	OK
V&V Charge Time	10.24

### A.2 Comments

Window constraint met.