

V&V Reference Report

L2 ASCDS Version : 8.4.3

Observation 14003 - L2 Version 2
Chandra X-Ray Center

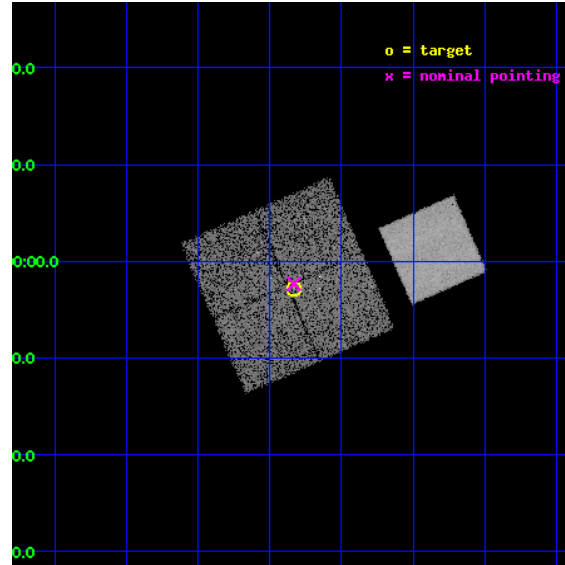
L2 Processing Date : Feb 27 2012

Contents

1	Front	2
2	OBI	3
2.1	OBI	3
2.1.1	Images	3
2.1.2	Bias	3
2.1.3	Parameters	4
2.1.4	Events	4
2.2	Compared Parameters	5
2.3	Aspect	6
2.4	Star Slots	9
2.4.1	Slot 3	9
2.4.2	Slot 4	10
2.4.3	Slot 5	11
2.4.4	Slot 6	12
2.4.5	Slot 7	13
2.5	FID Slots	14
2.5.1	Slot 0	14
2.5.2	Slot 1	15
2.5.3	Slot 2	16
A	Summary	17
A.1	Status	17
A.2	Comments	17

1 Front

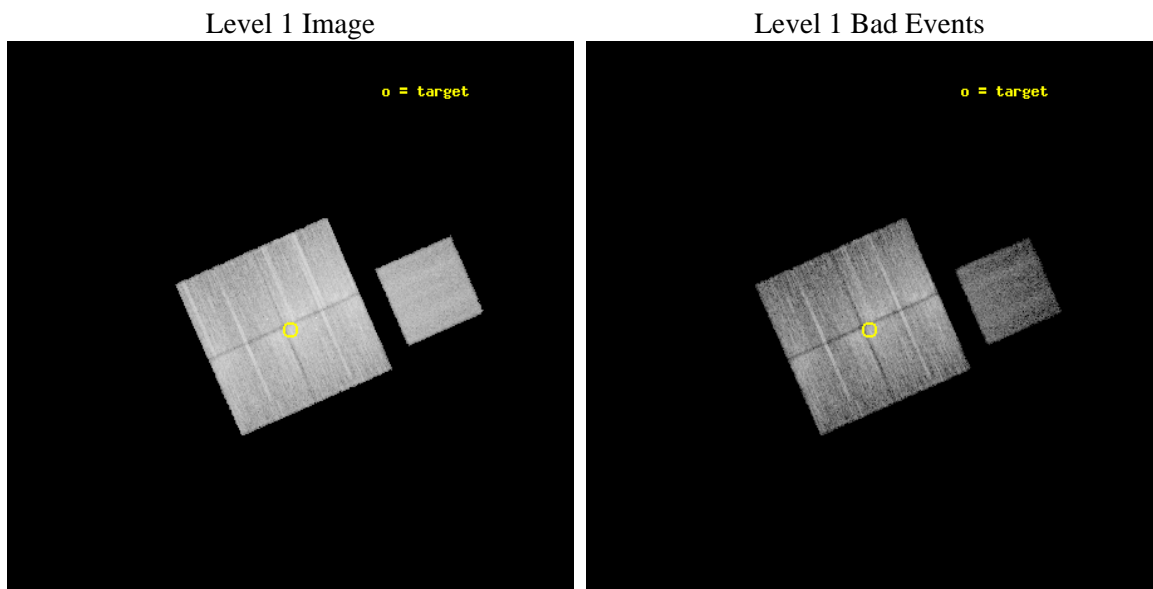
seq_num	801183	Sequence number
obs_id	14003	Observation id
title	GAMA groups and cosmic feedback	Proposal title
observer	Prof Trevor Ponman	Principal investigator
object	G12-18	Source name
dtcycle	0	
cycle	P	events from which exps? Prim/Second/Both
ra_targ	184.707083	Observer's specified target RA [deg]
dec_targ	-1.046944	Observer's specified target Dec [deg]
ra_nom	184.70802264878	Nominal RA [deg]
dec_nom	-1.038897936294	Nominal Dec [deg]
roll_nom	66.287120412878	Nominal Roll [deg]
revision	2	Processing version of data
ontime	10768.610818803	Sum of GTIs [s]
livetime	10627.91099072	Livetime [s]
ontime0	10768.487738788	Sum of GTIs [s]
ontime1	10762.246818125	Sum of GTIs [s]
ontime2	10765.428848505	Sum of GTIs [s]
ontime3	10768.610818803	Sum of GTIs [s]
ontime7	10771.792859137	Sum of GTIs [s]
l2events	67053	Number of level 2 events



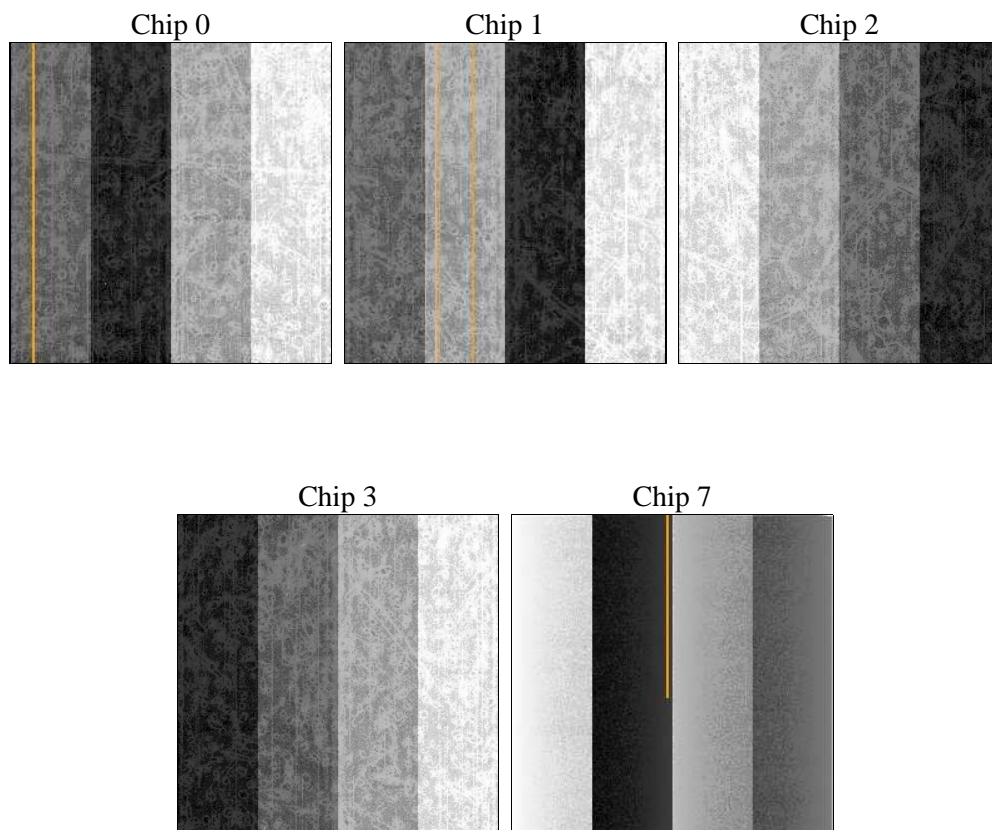
2 OBI

2.1 OBI

2.1.1 Images



2.1.2 Bias



2.1.3 Parameters

obi_num	1	Obi number	sched_exp_time	11000.000000	[s] Scheduled observation exposure time
ascdsver	8.4.3	Processing system revision	ontime	10768.610818803	Sum of GTIs [s]
caldbver	4.4.8	 	ontime0	10768.487738788	Sum of GTIs [s]
date	2012-02-27T12:48:18	Date and time of file creation	ontime1	10762.246818125	Sum of GTIs [s]
revision	2	Processing version of data	ontime2	10765.428848505	Sum of GTIs [s]
			ontime3	10768.610818803	Sum of GTIs [s]
			ontime7	10771.792859137	Sum of GTIs [s]
			l1events	557044	Number of level 1 events

2.1.4 Events

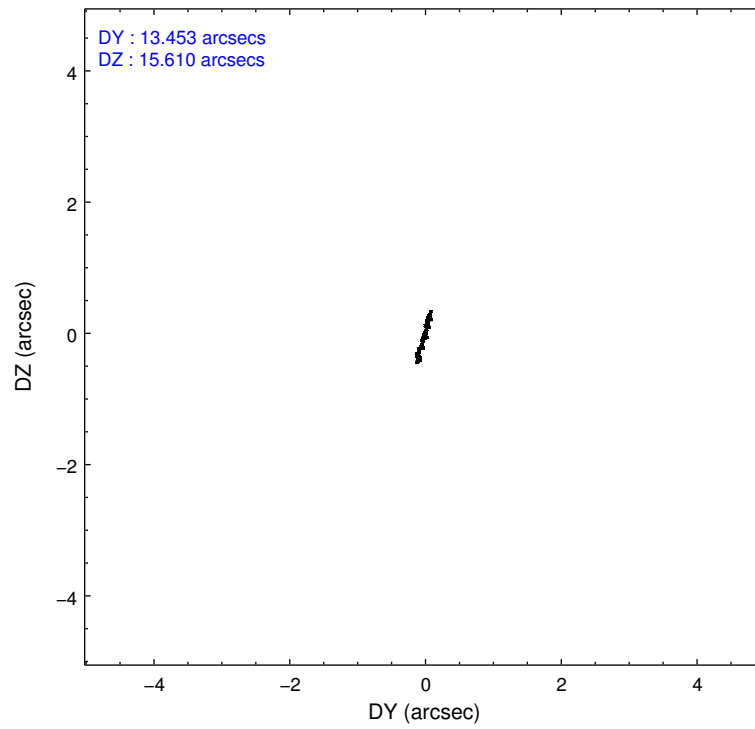
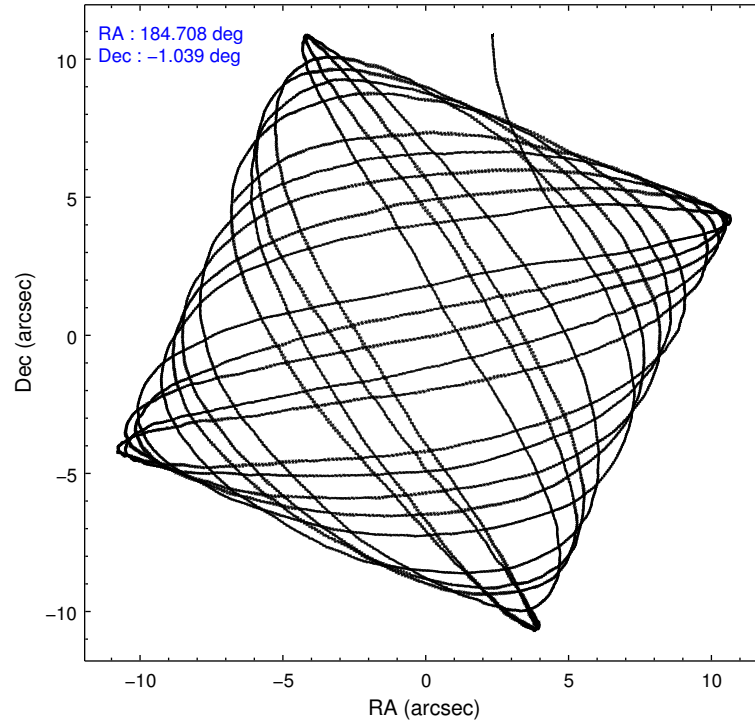
	ccd 0	ccd 1	ccd 2	ccd 3	ccd 7
level 1 events	99077	105918	143745	124062	84242
rejected events	84440	96178	124705	115765	42707
rejected %	85%	90%	86%	93%	50%

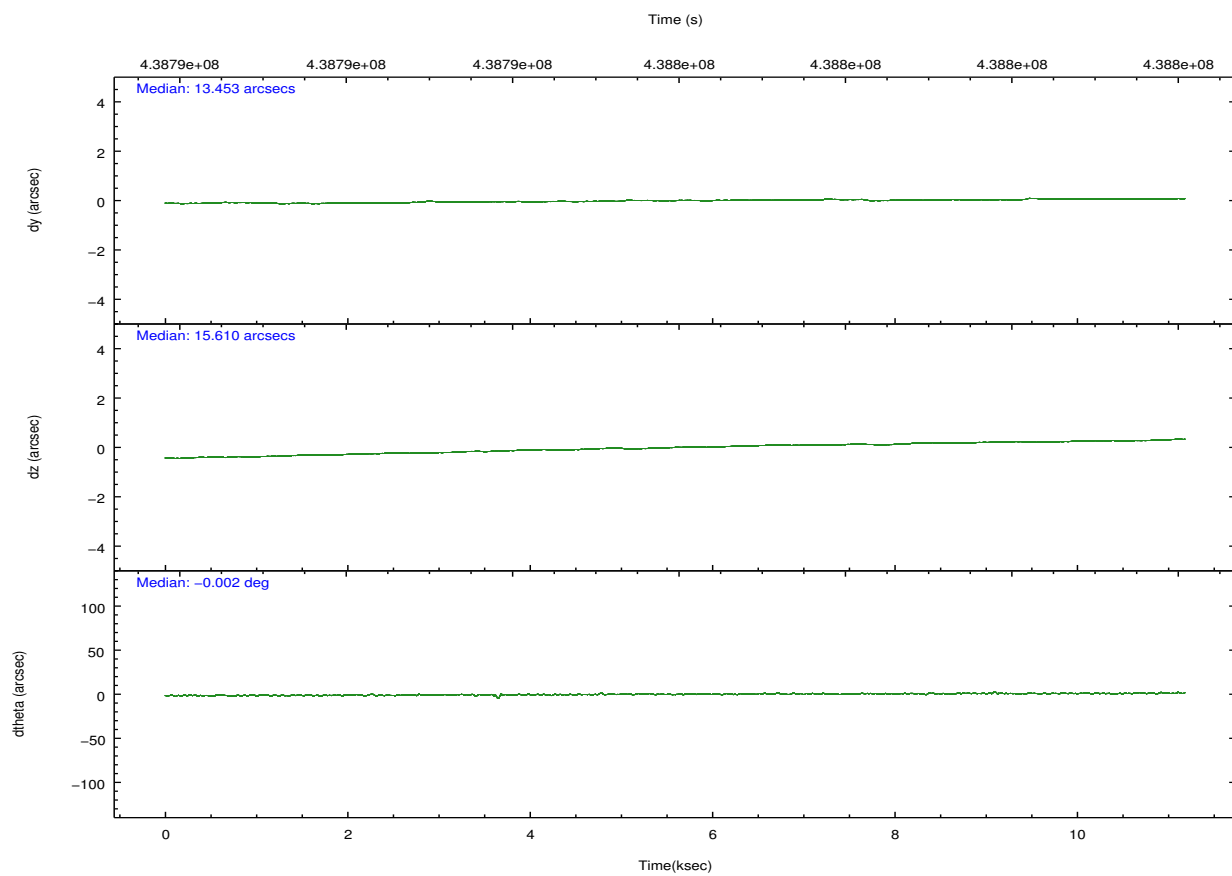
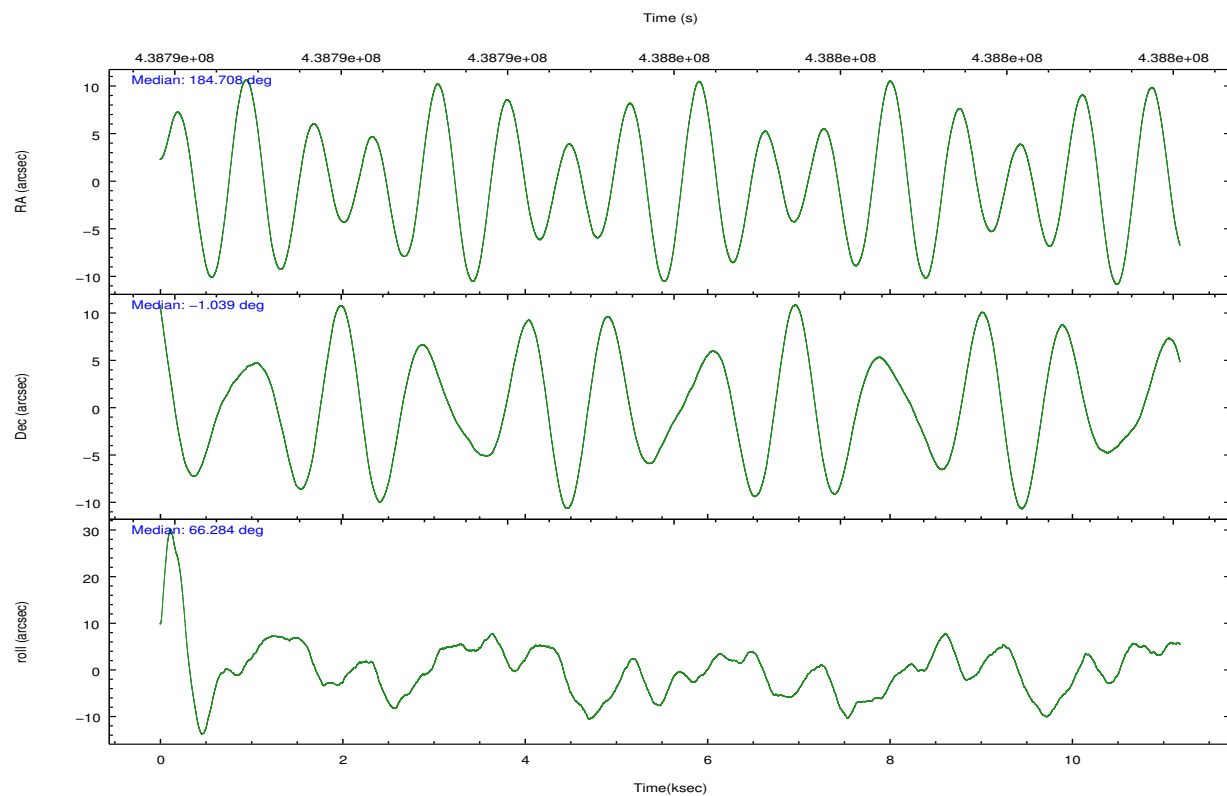
	ccd 0	ccd 1	ccd 2	ccd 3	ccd 7
grade 0 events	5832	3368	7687	3121	4714
	5%	3%	5%	2%	5%
grade 1 events	91	47	113	44	250
	0%	0%	0%	0%	0%
grade 2 events	5937	3249	6902	2329	11277
	5%	3%	4%	1%	13%
grade 3 events	715	775	736	732	3983
	0%	0%	0%	0%	4%
grade 4 events	758	783	1583	749	3974
	0%	0%	1%	0%	4%
grade 5 events	2412	2458	2366	2673	8129
	2%	2%	1%	2%	9%
grade 6 events	1404	1577	2144	1373	17603
	1%	1%	1%	1%	20%
grade 7 events	81928	93661	122214	113041	34312
	82%	88%	85%	91%	40%

2.2 Compared Parameters

Parameter	Planned	Actual	Parameter	Planned	Actual
Instrument	ACIS	ACIS	Obspar format version number	7	7
Detector	ACIS-01237	ACIS-01237	Obspar file type	PREDICTED	ACTUAL
Grating	NONE	NONE	Obspar update status	NONE	UPDATED
Data mode	VFAINT	VFAINT	CCD I0 on	Y	Y
Observation mode	POINTING	POINTING	CCD I1 on	Y	Y
[deg] Pointing RA	184.711113	184.7080226487826	CCD I2 on	Y	Y
[deg] Pointing Dec	-1.066233	-1.038897936293978	CCD I3 on	Y	Y
[deg] Pointing Roll	66.078517	66.28712041287815	CCD S0 on	N	N
[mm] SIM focus pos	-0.782348	-0.7809083437167272	CCD S1 on	N	N
[mm] SIM defocus	0	0.001439871863259334	CCD S2 on	N	N
[mm] SIM translation stage pos	-233.592463	-233.5874344608287	CCD S3 on	O1	Y
[mm] SIM translation stage offset	0	-0.005018542100998502	CCD S4 on	N	N
[s] Observation start time (MET)	438790546.184000	438790000.06393	CCD S5 on	N	N
Observation start date	2011-11-27T14:14:40	2011-11-27T14:06:40	Number of optional ACIS chips dropped	0	0
[s] Observation end time (MET)	438801546.184000	438802561.43959	On-chip summing requested	N	N
Observation end date	2011-11-27T17:18:00	2011-11-27T17:36:01	Subarray requested	NONE	NONE
Read mode	TIMED	TIMED	Alternating exposures requested	N	N
			[s] Primary exposure time	0.000000	3.1

2.3 Aspect



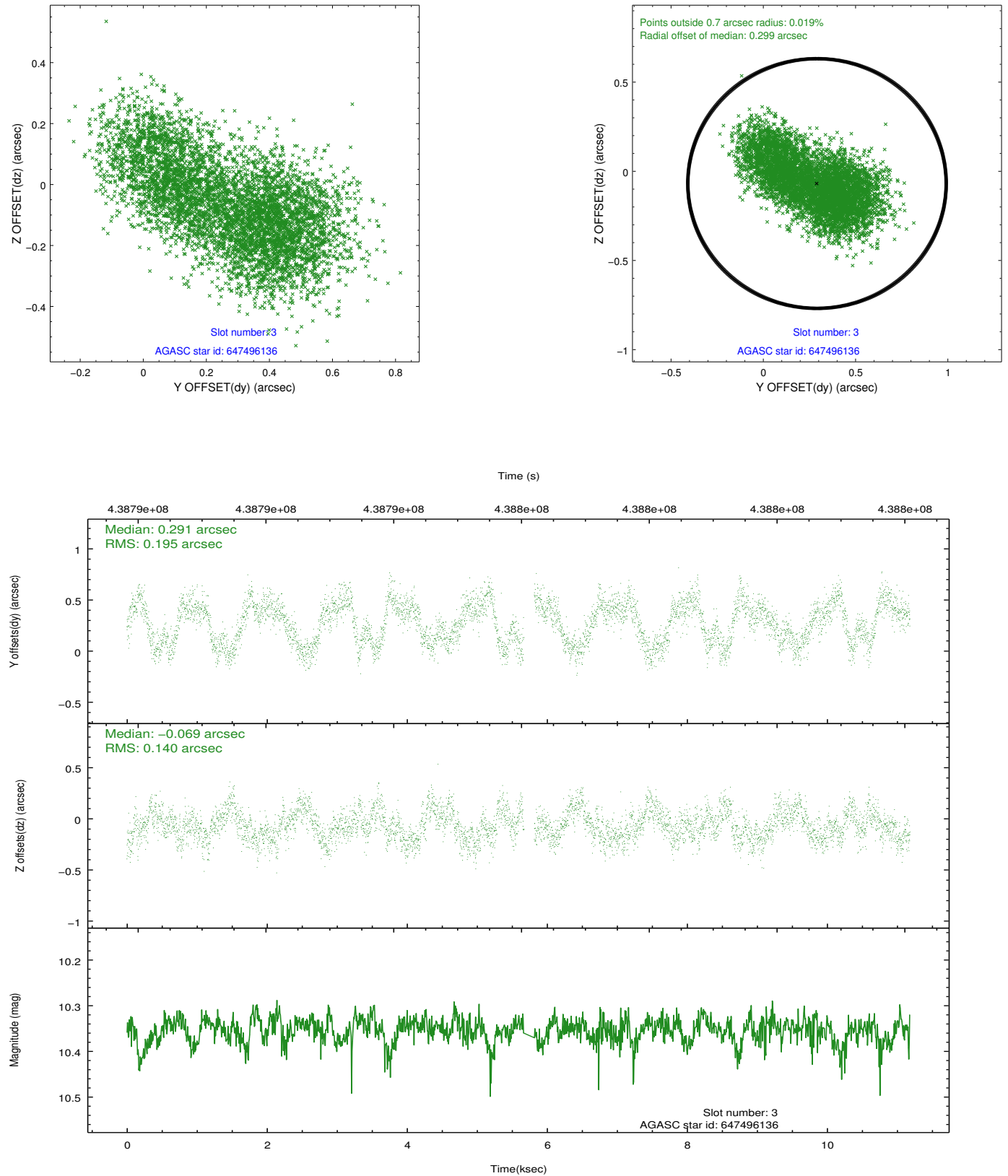


Slot Statistics

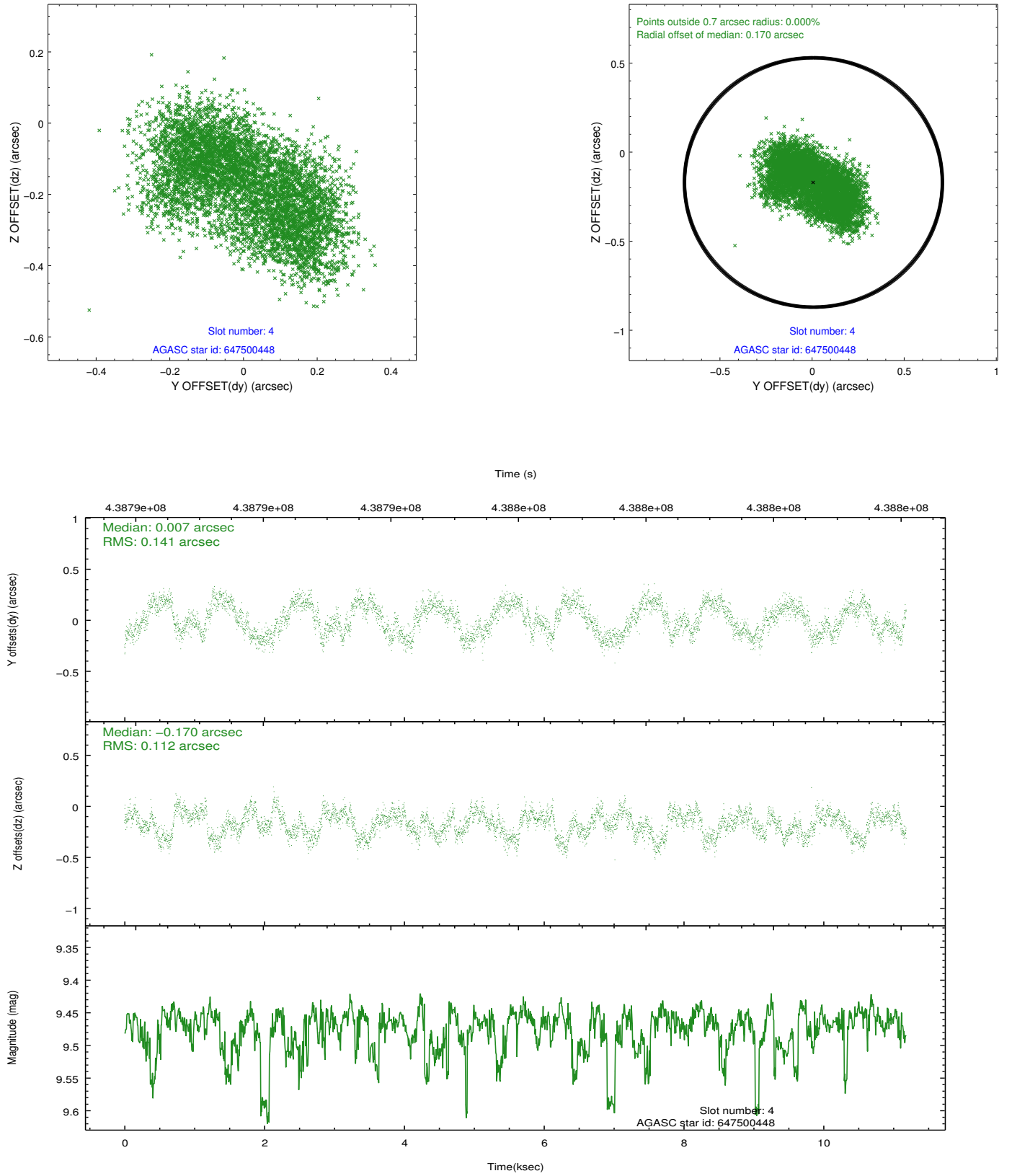
slot	status	id	mag	n_pts	med_dy	med_dz	dr1	dr2	ra	dec	mean_y	mean_z
0	FID	ACIS-I-1	7.04	2728	0.067	-0.050	0.013	0.023	0.000000	0.000000	926.13	-839.25
1	FID	ACIS-I-5	7.03	2728	-0.227	0.061	0.009	0.014	0.000000	0.000000	-1822.01	1058.13
2	FID	ACIS-I-6	7.03	2728	0.070	0.060	0.009	0.015	0.000000	0.000000	391.19	1703.14
3	GUIDE	647496136	10.35	5368	0.291	-0.069	0.259	0.409	184.336034	-1.307843	-1342.62	881.45
4	GUIDE	647500448	9.47	5429	0.007	-0.170	0.198	0.292	184.807560	-0.597958	1681.82	366.12
5	GUIDE	647504952	6.28	5455	-0.127	-0.158	0.163	0.321	184.667993	-0.787187	855.79	549.01
6	GUIDE	647629064	10.00	5437	-0.127	0.384	0.280	0.403	185.530525	-0.761949	2197.58	-2251.06
7	GUIDE	647629664	9.84	5428	-0.056	0.057	0.219	0.331	185.316455	-0.649528	2255.52	-1383.26

2.4 Star Slots

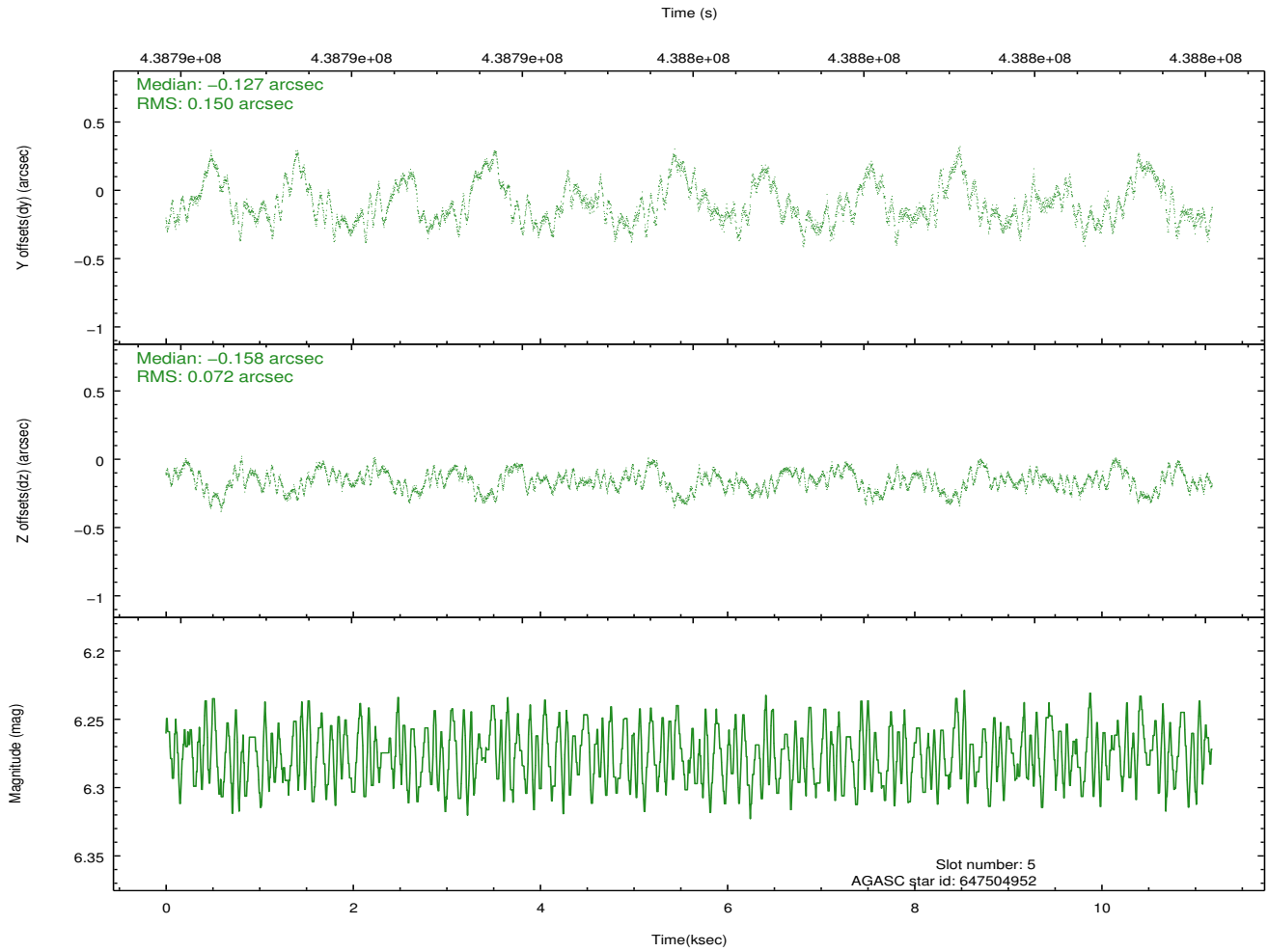
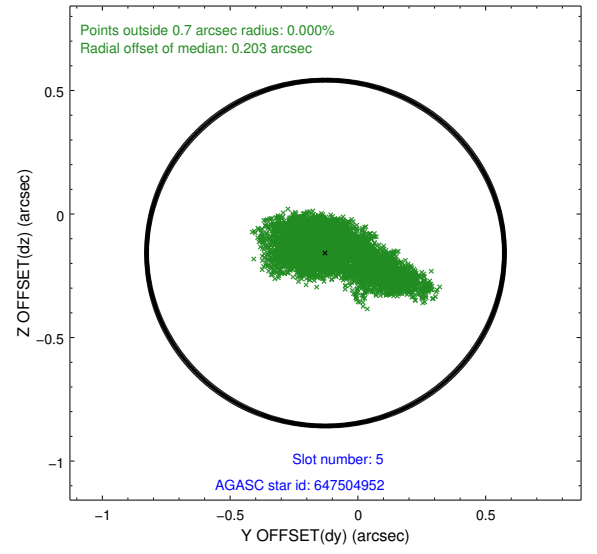
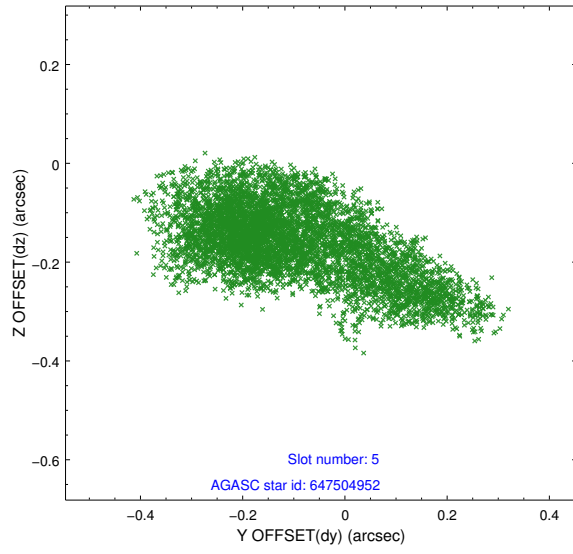
2.4.1 Slot 3



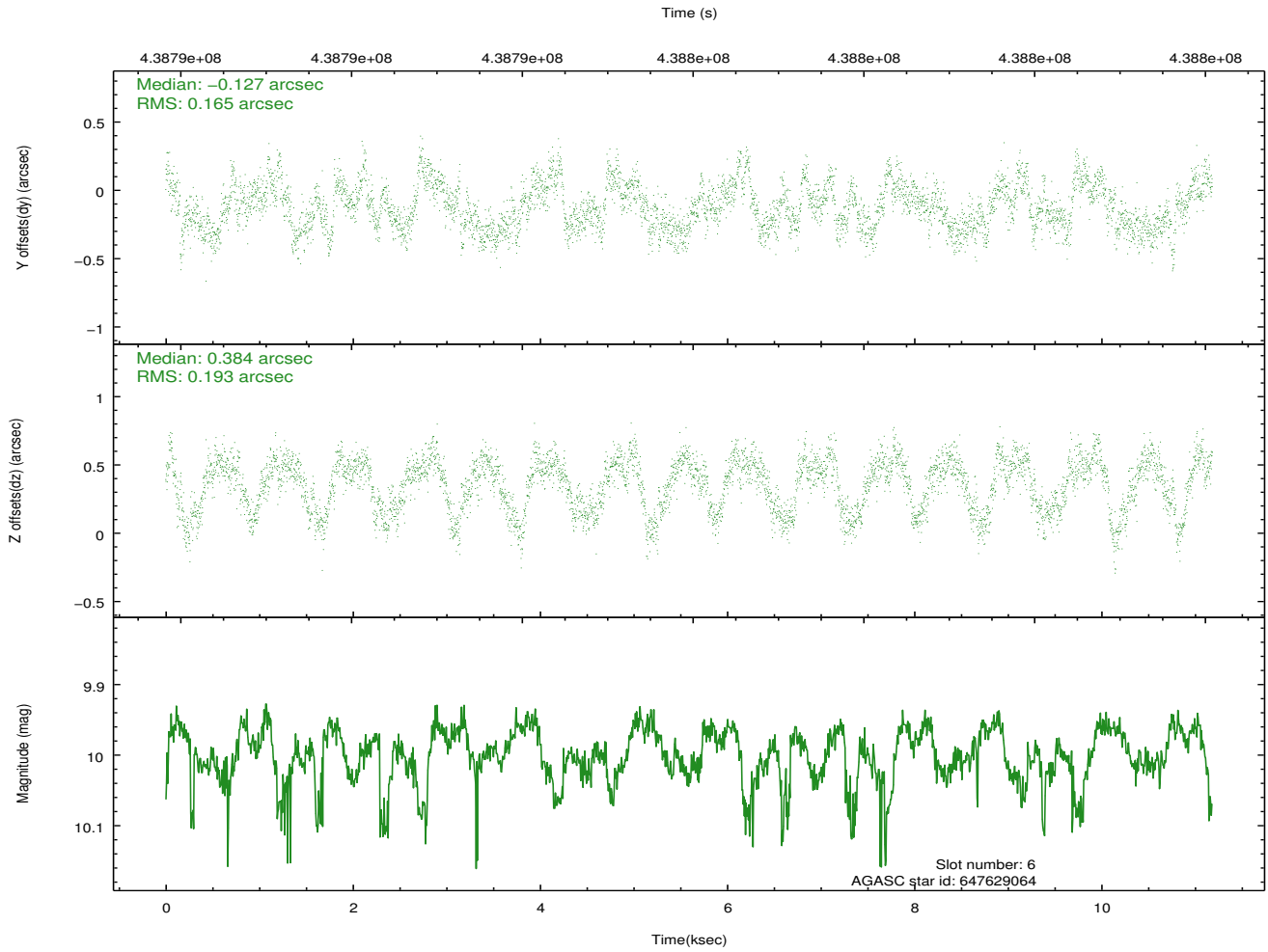
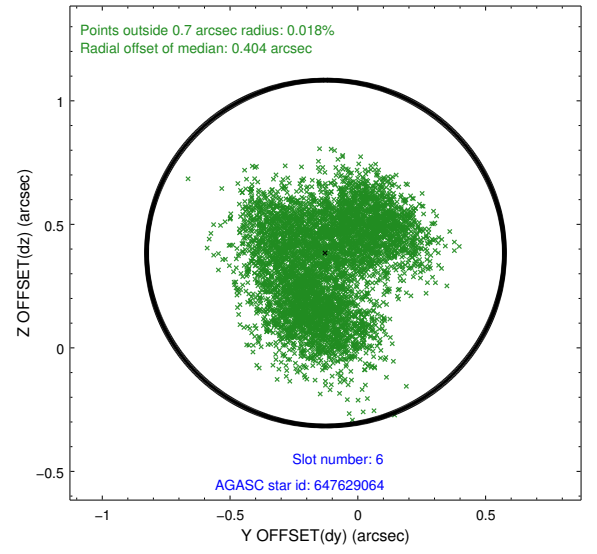
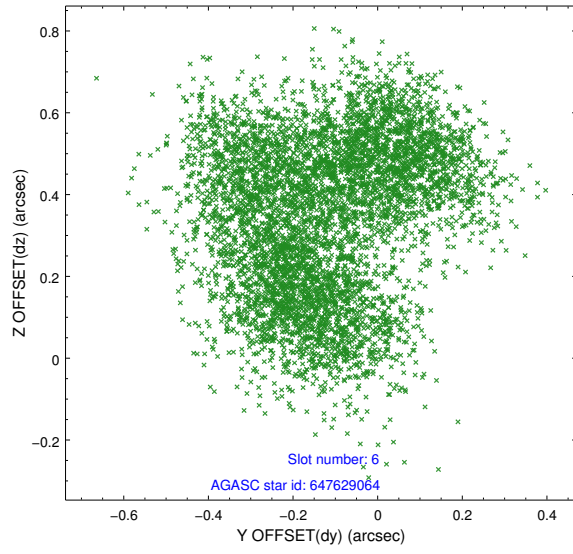
2.4.2 Slot 4



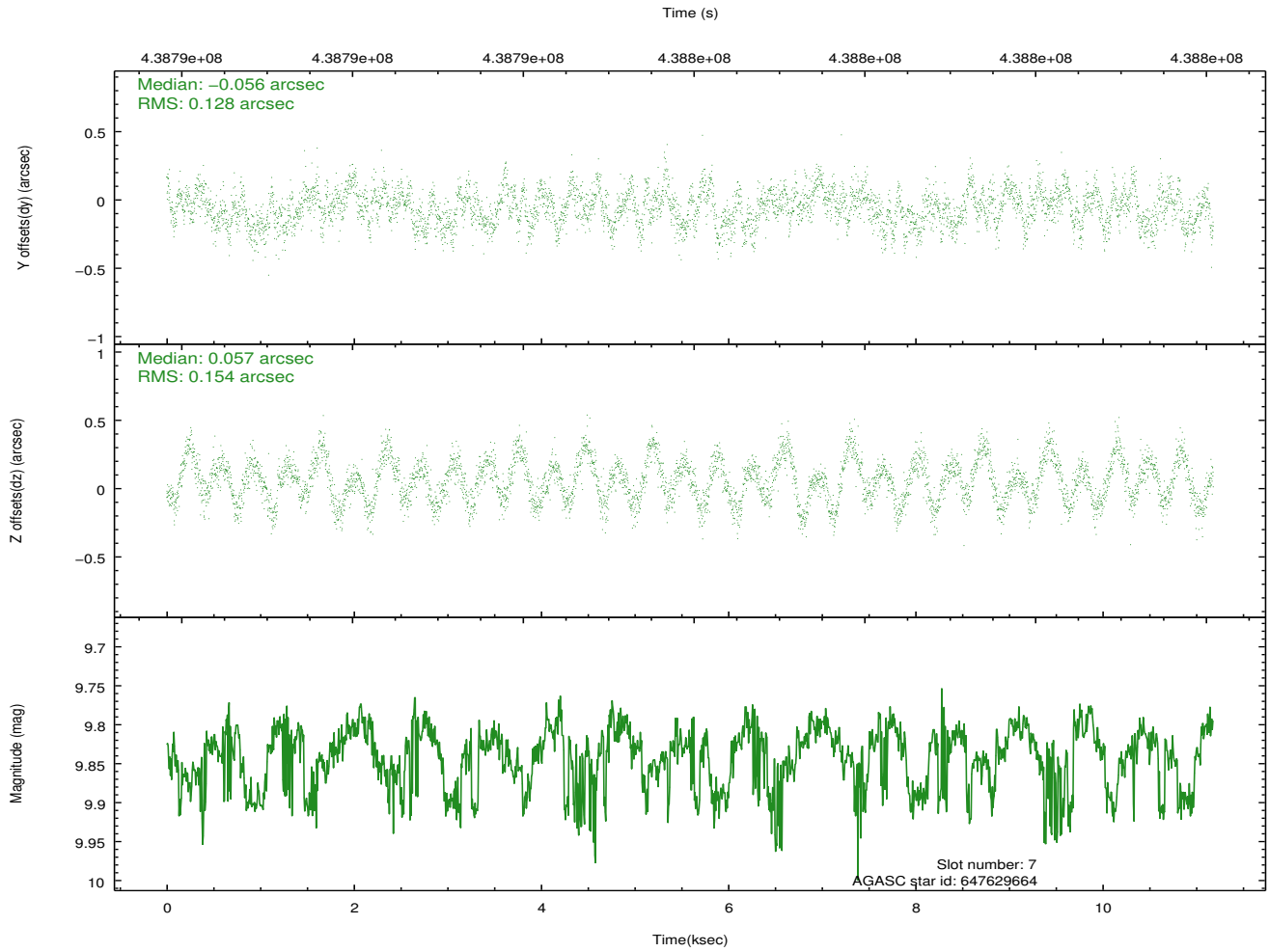
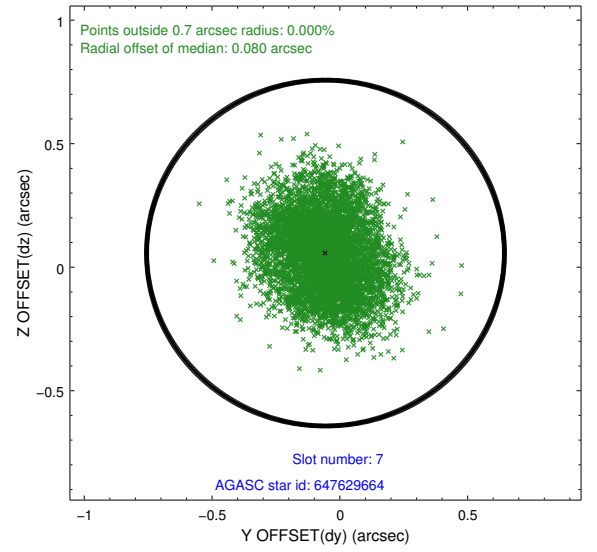
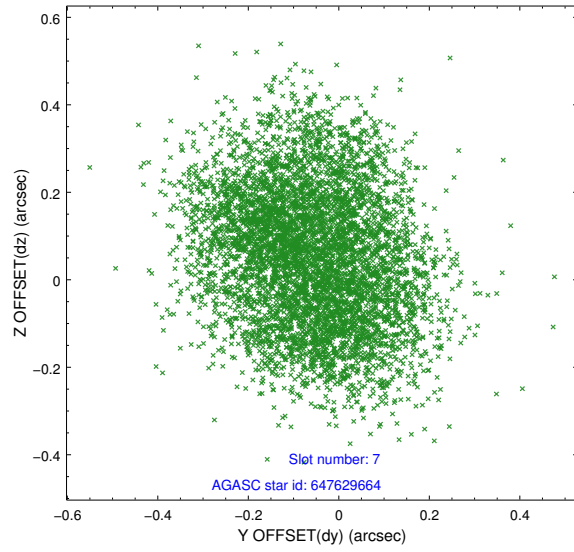
2.4.3 Slot 5



2.4.4 Slot 6

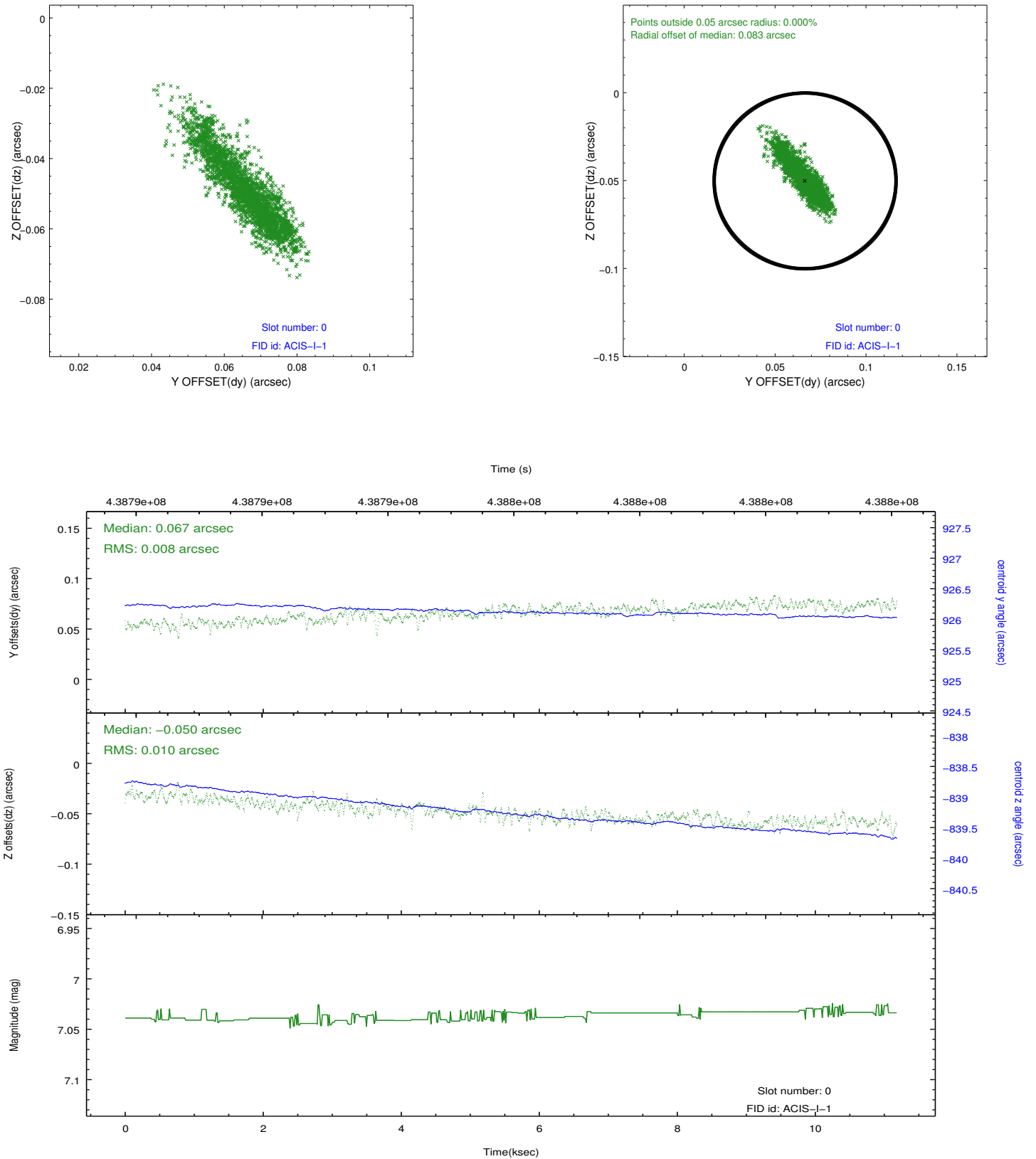


2.4.5 Slot 7

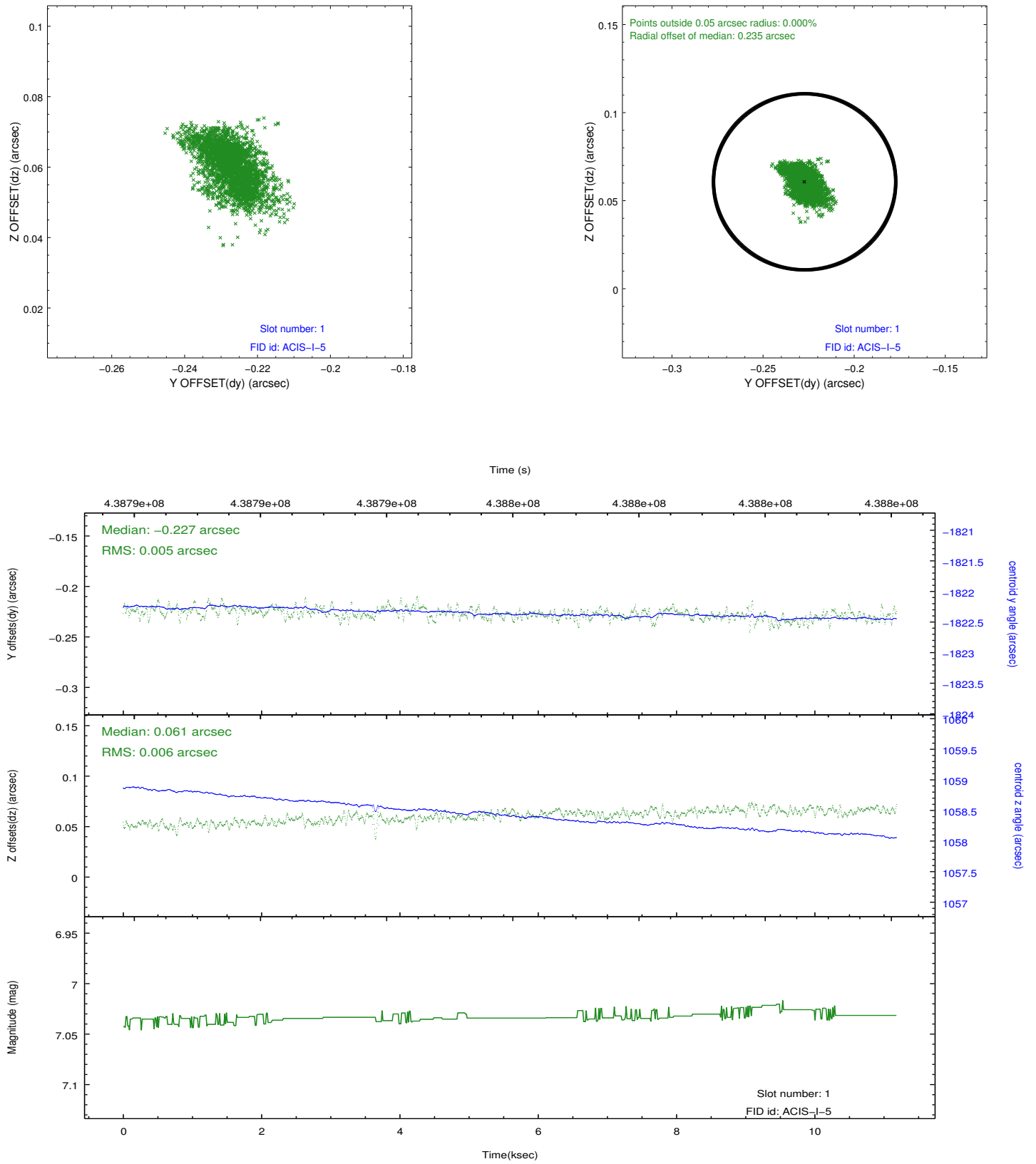


2.5 FID Slots

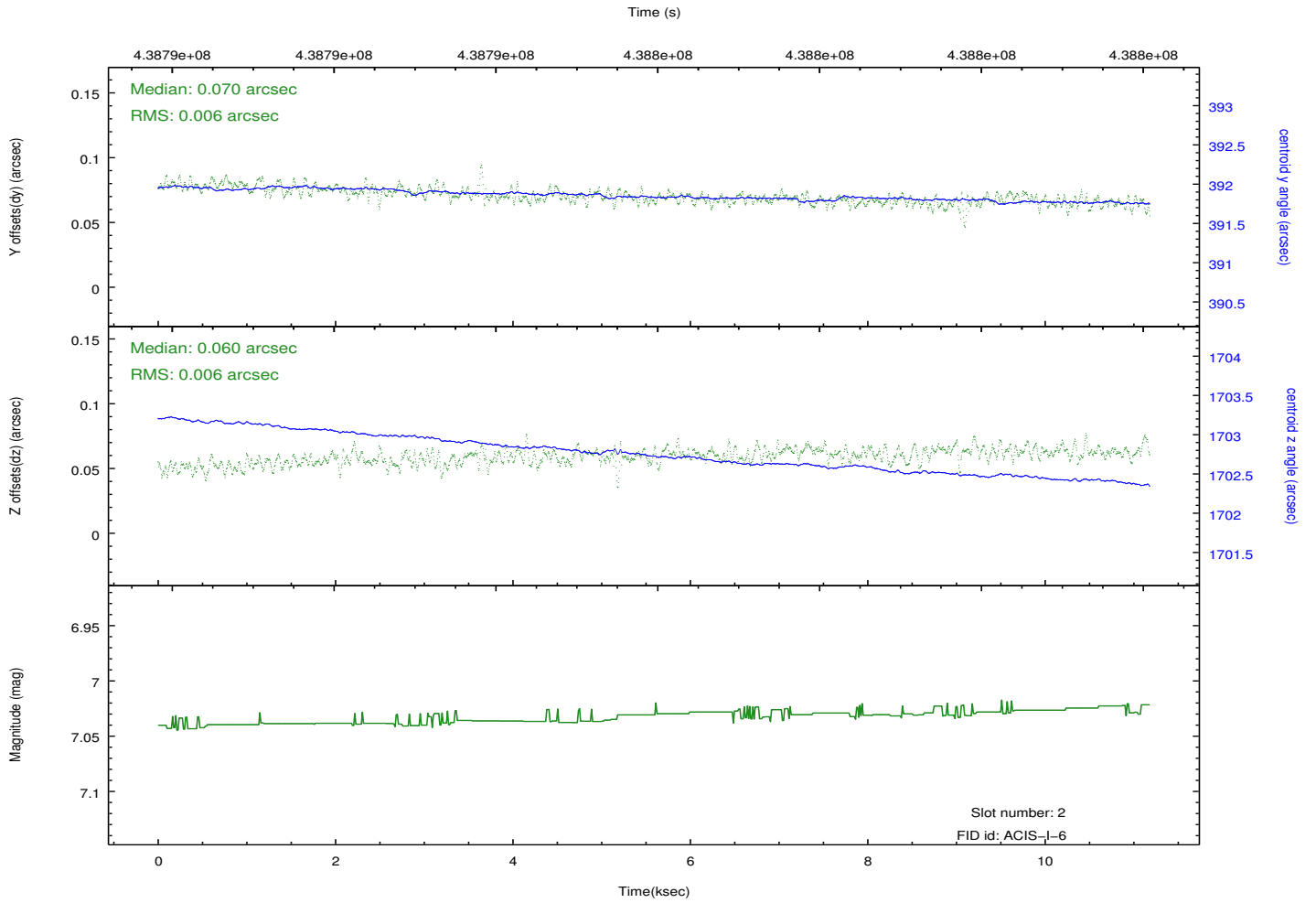
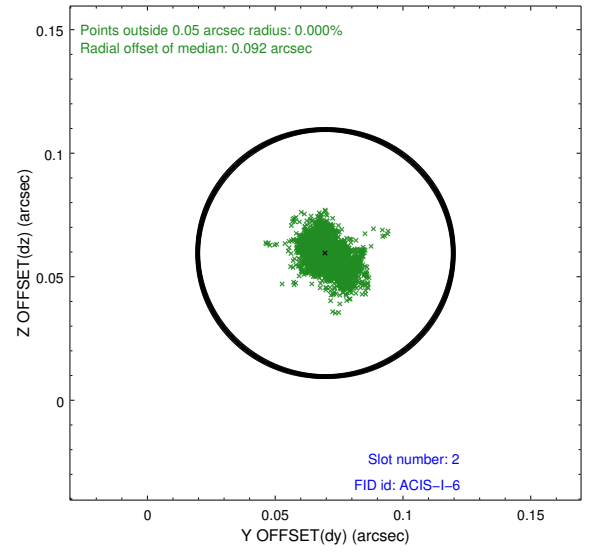
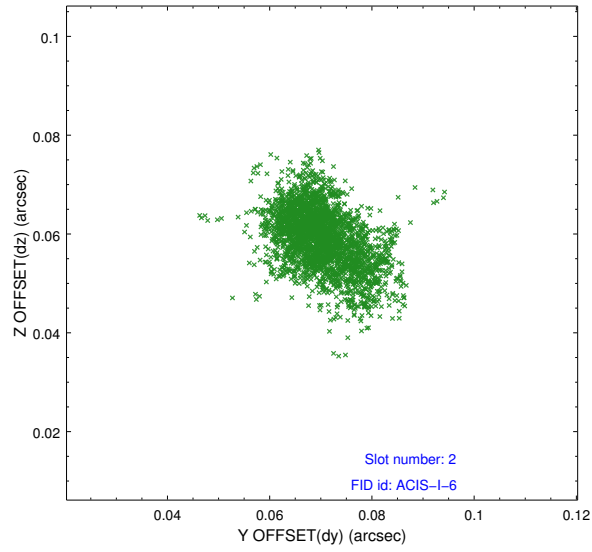
2.5.1 Slot 0



2.5.2 Slot 1



2.5.3 Slot 2



A Summary

A.1 Status

V&V Scientist	Jen Lauer
V&V Date (YYYY-MM-DD)	2012.02.29
V&V Edition	1
V&V Disposition and Status	OK
V&V Charge Time	10.768610819936

A.2 Comments