

# V&V Reference Report

## L2 ASCDS Version : 8.4.3

Observation 13563 - L2 Version 2  
Chandra X-Ray Center

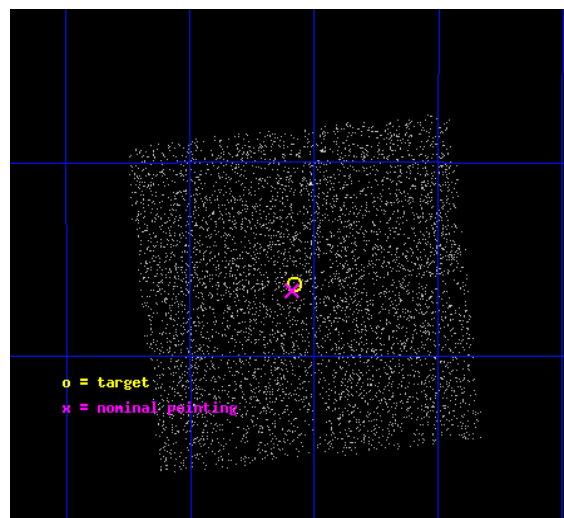
L2 Processing Date : Feb 25 2012

## Contents

<b>1</b>	<b>Front</b>	<b>2</b>
<b>2</b>	<b>OBI</b>	<b>3</b>
2.1	OBI . . . . .	3
2.1.1	Images . . . . .	3
2.1.2	Bias . . . . .	3
2.1.3	Parameters . . . . .	4
2.1.4	Events . . . . .	4
2.2	Compared Parameters . . . . .	5
2.3	Aspect . . . . .	6
2.4	Star Slots . . . . .	9
2.4.1	Slot 3 . . . . .	9
2.4.2	Slot 4 . . . . .	10
2.4.3	Slot 5 . . . . .	11
2.4.4	Slot 6 . . . . .	12
2.4.5	Slot 7 . . . . .	13
2.5	FID Slots . . . . .	14
2.5.1	Slot 0 . . . . .	14
2.5.2	Slot 1 . . . . .	15
2.5.3	Slot 2 . . . . .	16
<b>A</b>	<b>Summary</b>	<b>17</b>
A.1	Status . . . . .	17
A.2	Comments . . . . .	17

# 1 Front

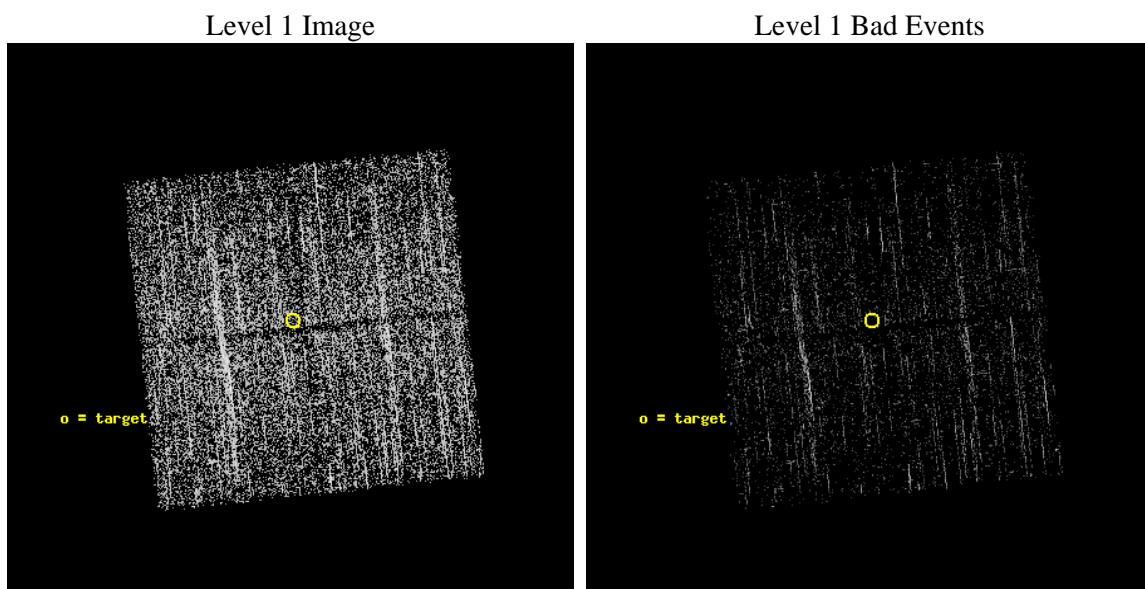
seq_num	401339	Sequence number
obs_id	13563	Observation id
title	Completing the Galactic Bulge Survey: categorizing the plethora of faint X-ray sources in the Galactic Bulge	Proposal title
observer	dr P Jonker	Principal investigator
object	GBS13-4	Source name
dtcycle	0	&#160
cycle	P	events from which exps? Prim/Second/Both
ra_targ	268.145283	Observer's specified target RA [deg]
dec_targ	-30.1052	Observer's specified target Dec [deg]
ra_nom	268.14762276488	Nominal RA [deg]
dec_nom	-30.110592566492	Nominal Dec [deg]
roll_nom	263.96591737093	Nominal Roll [deg]
revision	2	Processing version of data
ontime	1971.6000151634	Sum of GTIs [s]
livetime	1945.8396094945	Livetime [s]
ontime0	1971.6000151634	Sum of GTIs [s]
ontime1	1971.6000151634	Sum of GTIs [s]
ontime2	1971.6000151634	Sum of GTIs [s]
ontime3	1971.6000151634	Sum of GTIs [s]
l2events	6103	Number of level 2 events



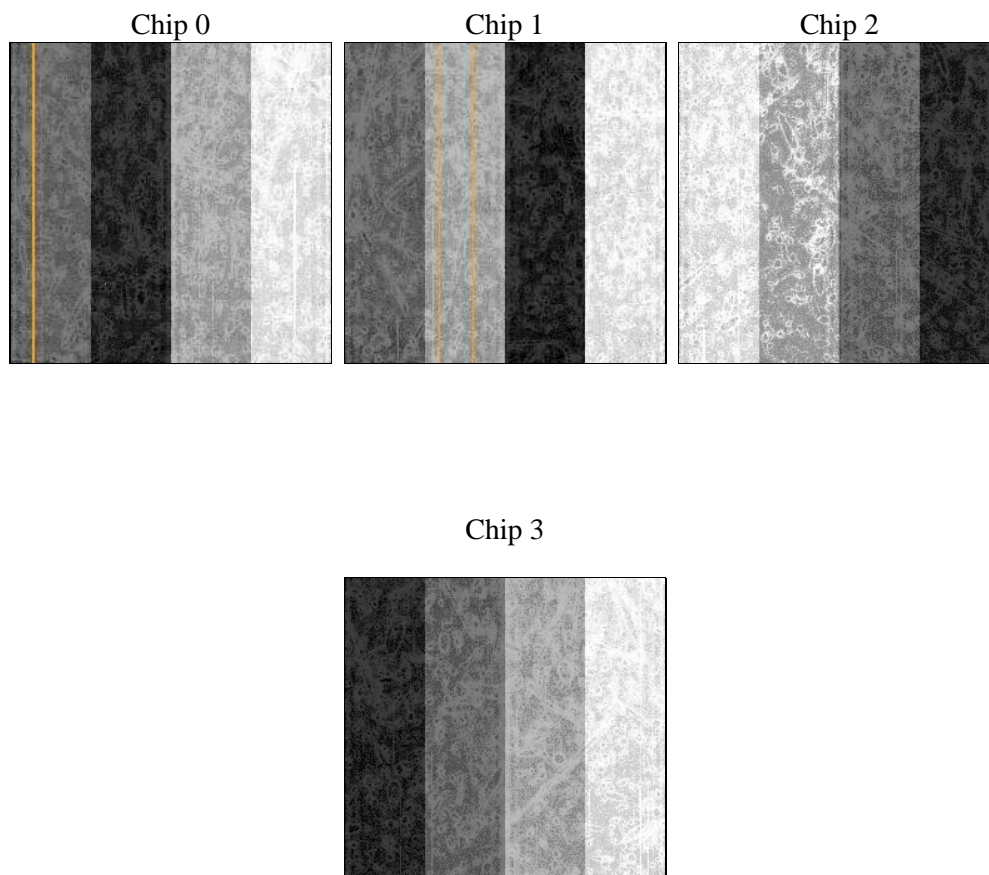
## 2 OBI

### 2.1 OBI

#### 2.1.1 Images



#### 2.1.2 Bias



### 2.1.3 Parameters

obi_num	0	Obi number	sched_exp_time	2180.000000	[s] Scheduled observation exposure time
ascdsver	8.4.3	Processing system revision	ontime	1971.6000151634	Sum of GTIs [s]
caldsver	4.4.8	&#160	ontime0	1971.6000151634	Sum of GTIs [s]
date	2012-02-26T01:08:29	Date and time of file creation	ontime1	1971.6000151634	Sum of GTIs [s]
revision	2	Processing version of data	ontime2	1971.6000151634	Sum of GTIs [s]
			ontime3	1971.6000151634	Sum of GTIs [s]
			l1events	48747	Number of level 1 events

### 2.1.4 Events

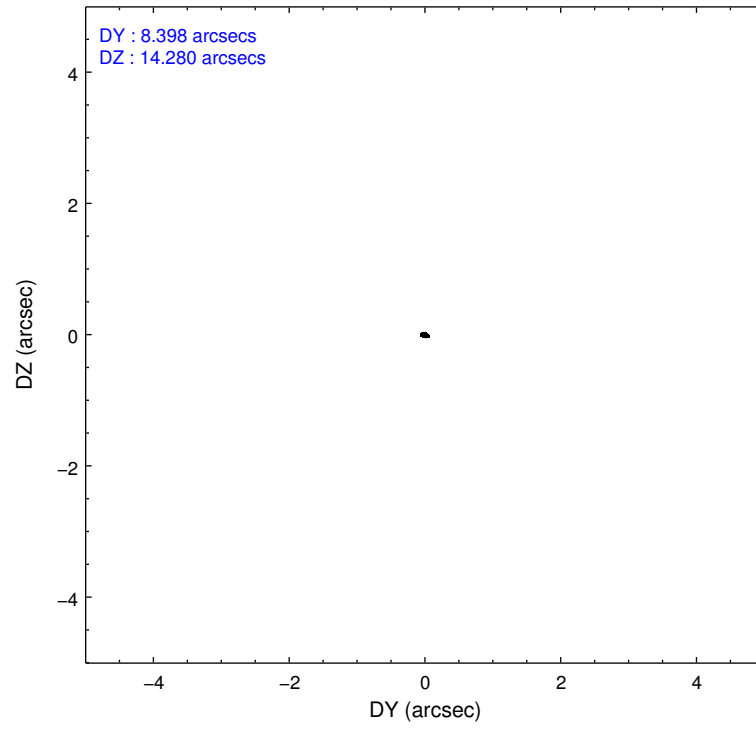
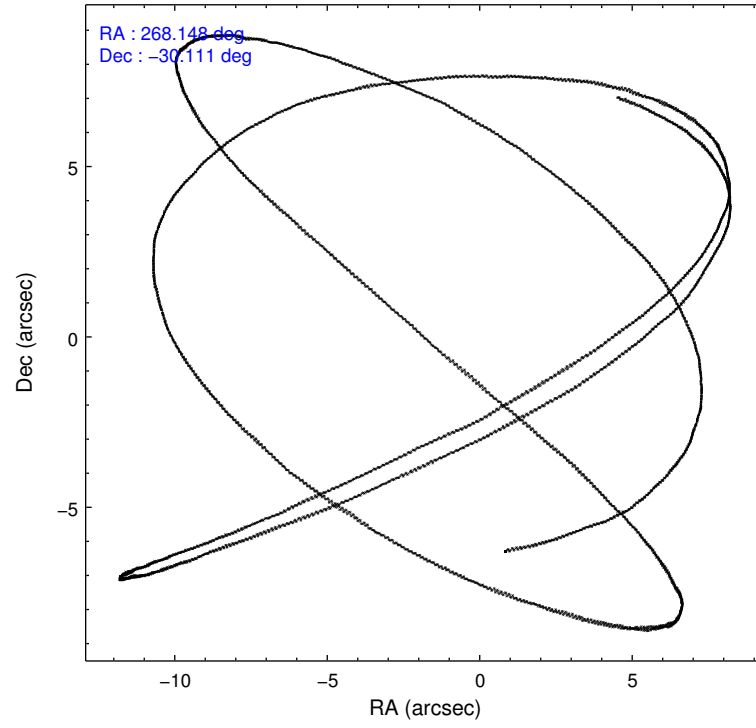
	ccd 0	ccd 1	ccd 2	ccd 3
level 1 events	12950	11424	12611	11762
rejected events	11196	9498	10911	10034
rejected %	86%	83%	86%	85%

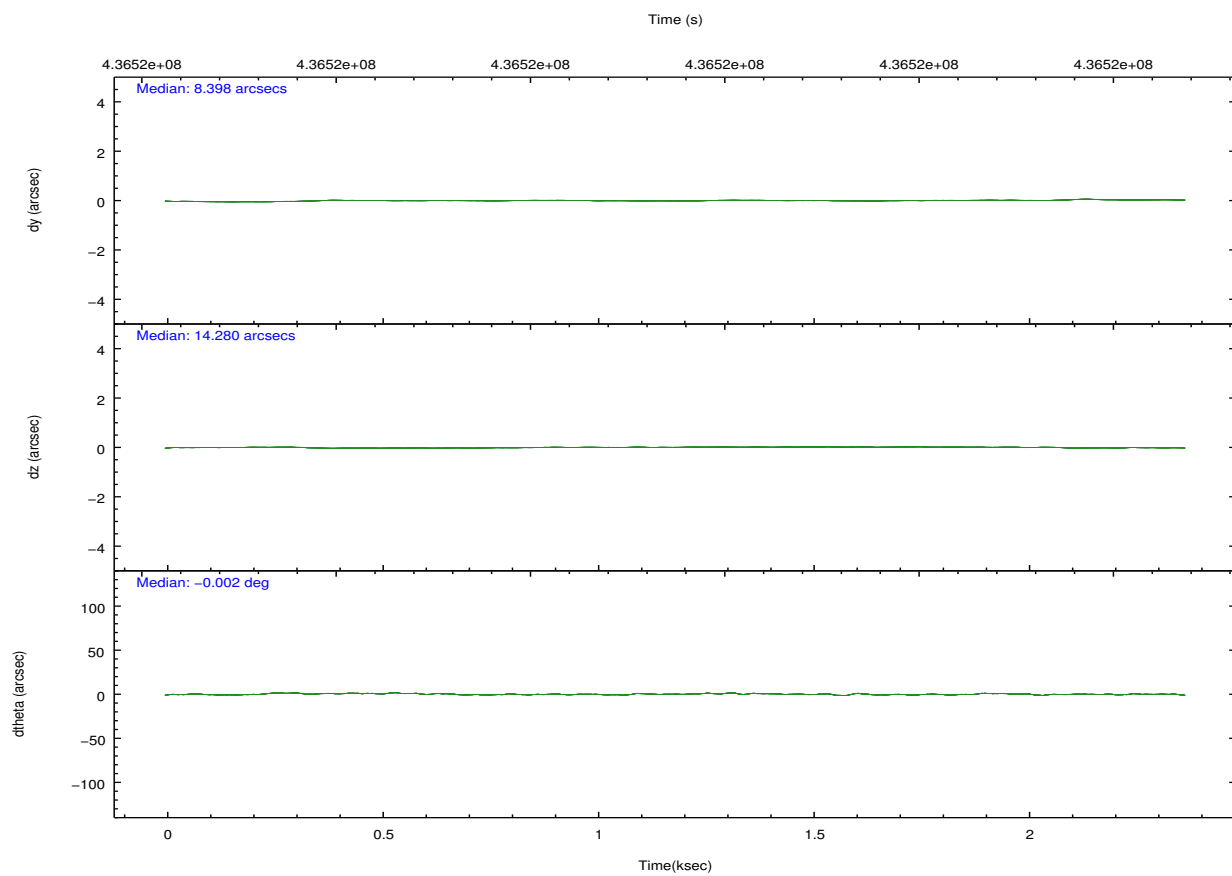
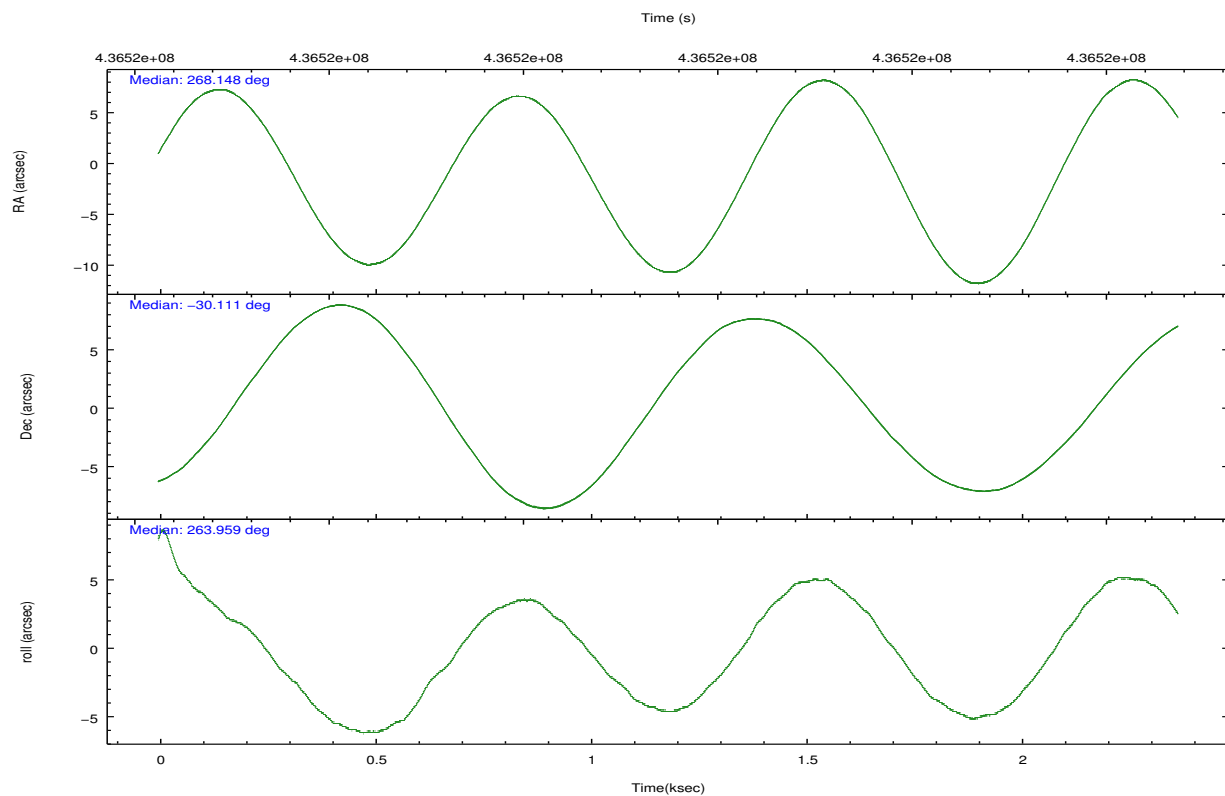
	ccd 0	ccd 1	ccd 2	ccd 3
grade 0 events	753	891	774	796
	5%	7%	6%	6%
grade 1 events	6	6	12	12
	0%	0%	0%	0%
grade 2 events	371	369	374	335
	2%	3%	2%	2%
grade 3 events	161	190	143	151
	1%	1%	1%	1%
grade 4 events	165	169	144	164
	1%	1%	1%	1%
grade 5 events	543	621	506	592
	4%	5%	4%	5%
grade 6 events	309	314	268	286
	2%	2%	2%	2%
grade 7 events	10642	8864	10390	9426
	82%	77%	82%	80%

## 2.2 Compared Parameters

Parameter	Planned	Actual	Parameter	Planned	Actual
Instrument	ACIS	ACIS	Obspar format version number	7	7
Detector	ACIS-0123	ACIS-0123	Obspar file type	PREDICTED	ACTUAL
Grating	NONE	NONE	Obspar update status	NONE	UPDATED
Data mode	VFAINT	VFAINT	Number of optional ACIS chips dropped	0	0
Observation mode	POINTING	POINTING	On-chip summing requested	N	N
[deg] Pointing RA	268.134400	268.1476227648825	Subarray requested	NONE	NONE
[deg] Pointing Dec	-30.085564	-30.11059256649159	Alternating exposures requested	N	N
[deg] Pointing Roll	263.750604	263.9659173709337	[s] Primary exposure time	0.000000	3.1
[mm] SIM focus pos	-0.782348	-0.7809083437167272			
[mm] SIM defocus	0	0.001439871863259334			
[mm] SIM translation stage pos	-233.592463	-233.5874344608287			
[mm] SIM translation stage offset	0	-0.005018542100998502			
[s] Observation start time (MET)	436518869.184000	436518492.83177			
Observation start date	2011-11-01T07:13:23	2011-11-01T07:08:12			
[s] Observation end time (MET)	436521049.184000	436521182.43192			
Observation end date	2011-11-01T07:49:43	2011-11-01T07:53:02			
Read mode	TIMED	TIMED			

## 2.3 Aspect





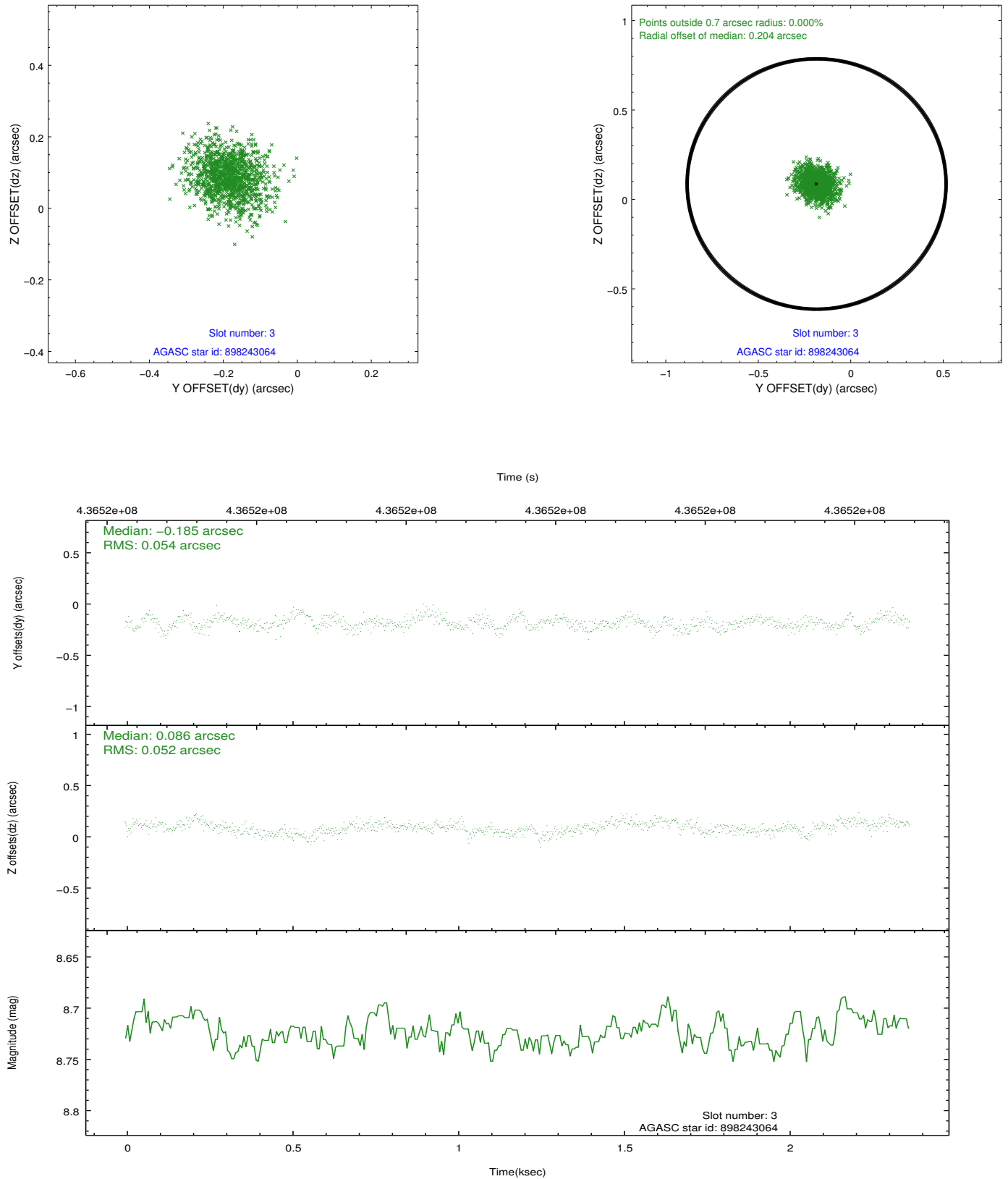
### Slot Statistics

slot	status	id	mag	n_pts	med_dy	med_dz	dr1	dr2	ra	dec	mean_y	mean_z
0	FID	ACIS-I-1	7.01	578	0.023	-0.012	0.011	0.018	0.000000	0.000000	931.27	-837.87
1	FID	ACIS-I-4	6.95	577	0.190	0.021	0.009	0.015	0.000000	0.000000	2153.01	1060.59
2	FID	ACIS-I-5	6.99	578	-0.311	0.062	0.008	0.013	0.000000	0.000000	-1813.54	1061.60
3	GUIDE	898243064	8.72	1156	-0.185	0.086	0.079	0.132	268.852106	-29.678564	-1693.80	2072.30
4	GUIDE	898250872	7.07	1156	-0.183	0.077	0.059	0.091	268.026303	-29.632040	-1587.12	-512.76
5	GUIDE	966919736	6.94	1156	0.309	-0.265	0.070	0.111	267.322278	-30.597445	2114.88	-2300.31
6	GUIDE	967060720	7.55	1156	0.120	0.019	0.062	0.097	268.816262	-30.601019	1623.14	2300.78
7	GUIDE	898250520	8.59	1155	-0.055	0.075	0.084	0.140	268.903830	-29.977602	-637.84	2345.09

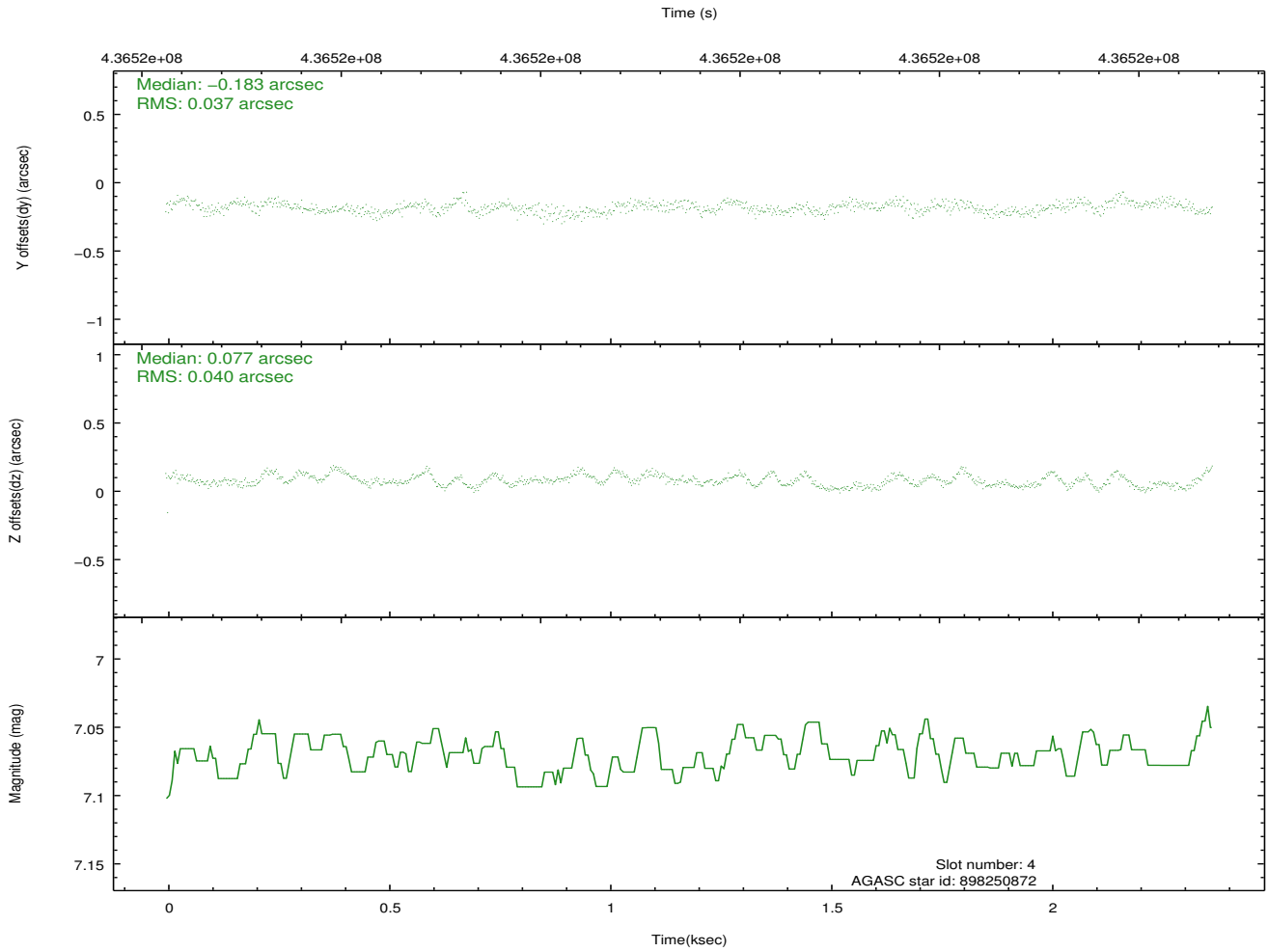
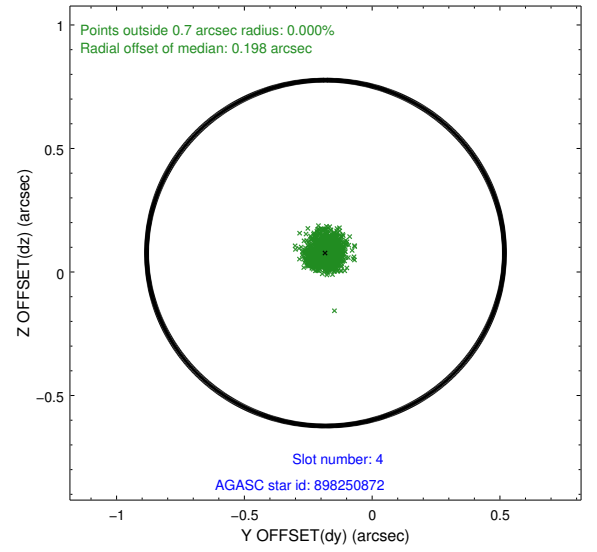
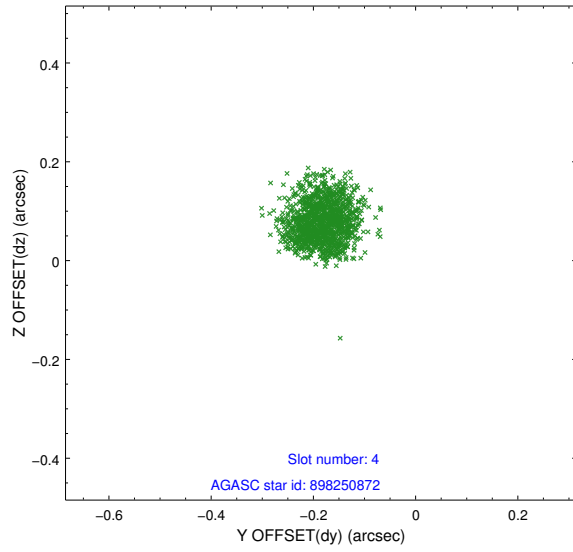


## 2.4 Star Slots

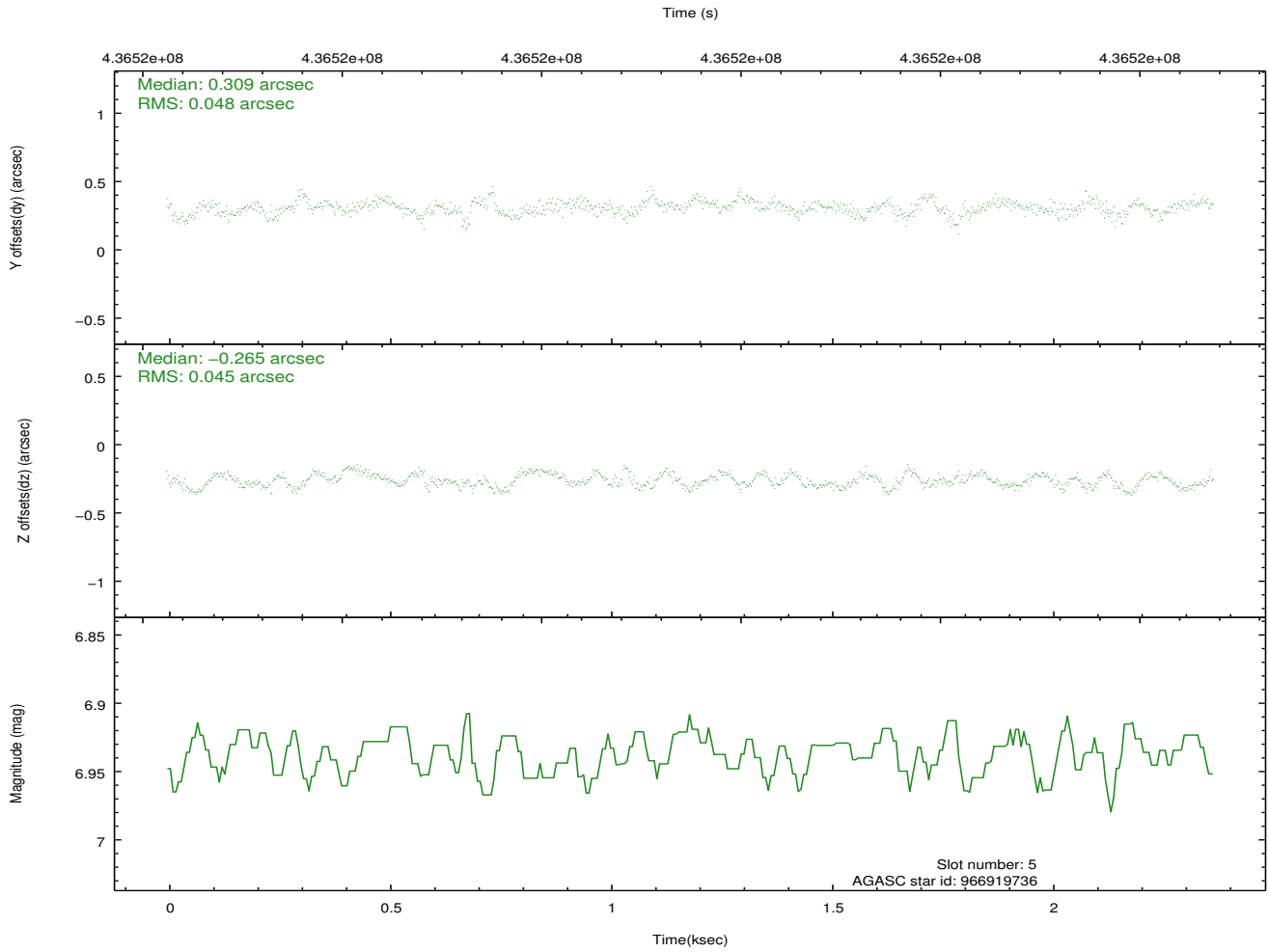
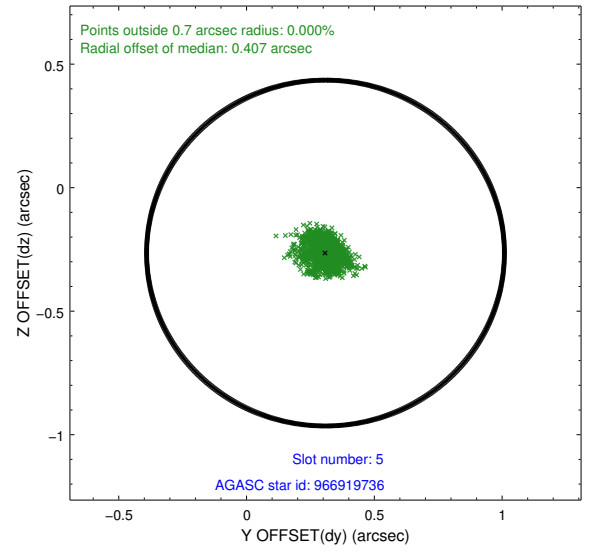
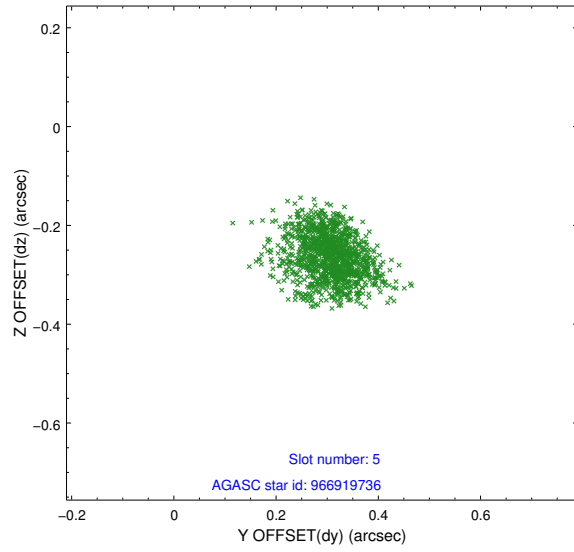
### 2.4.1 Slot 3



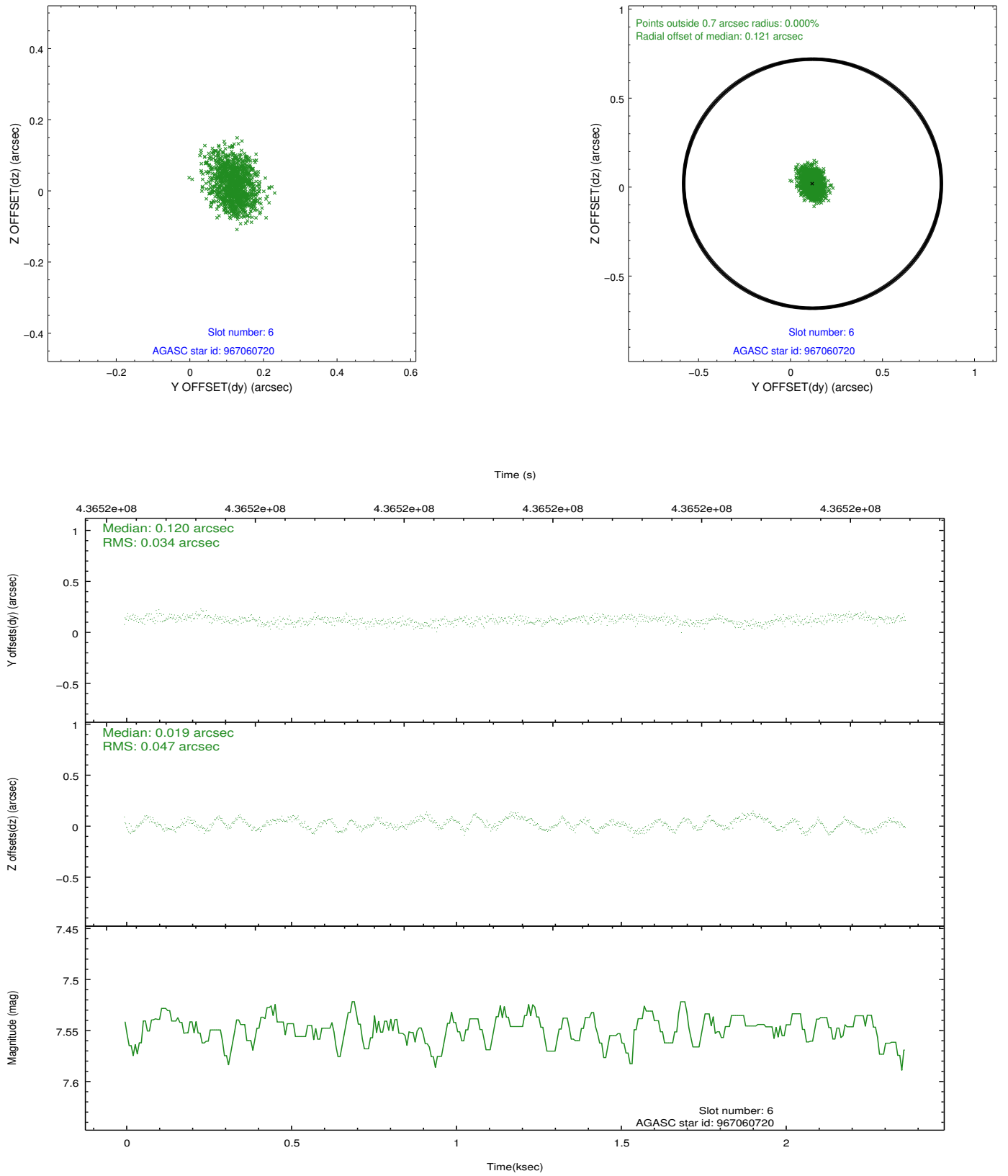
## 2.4.2 Slot 4



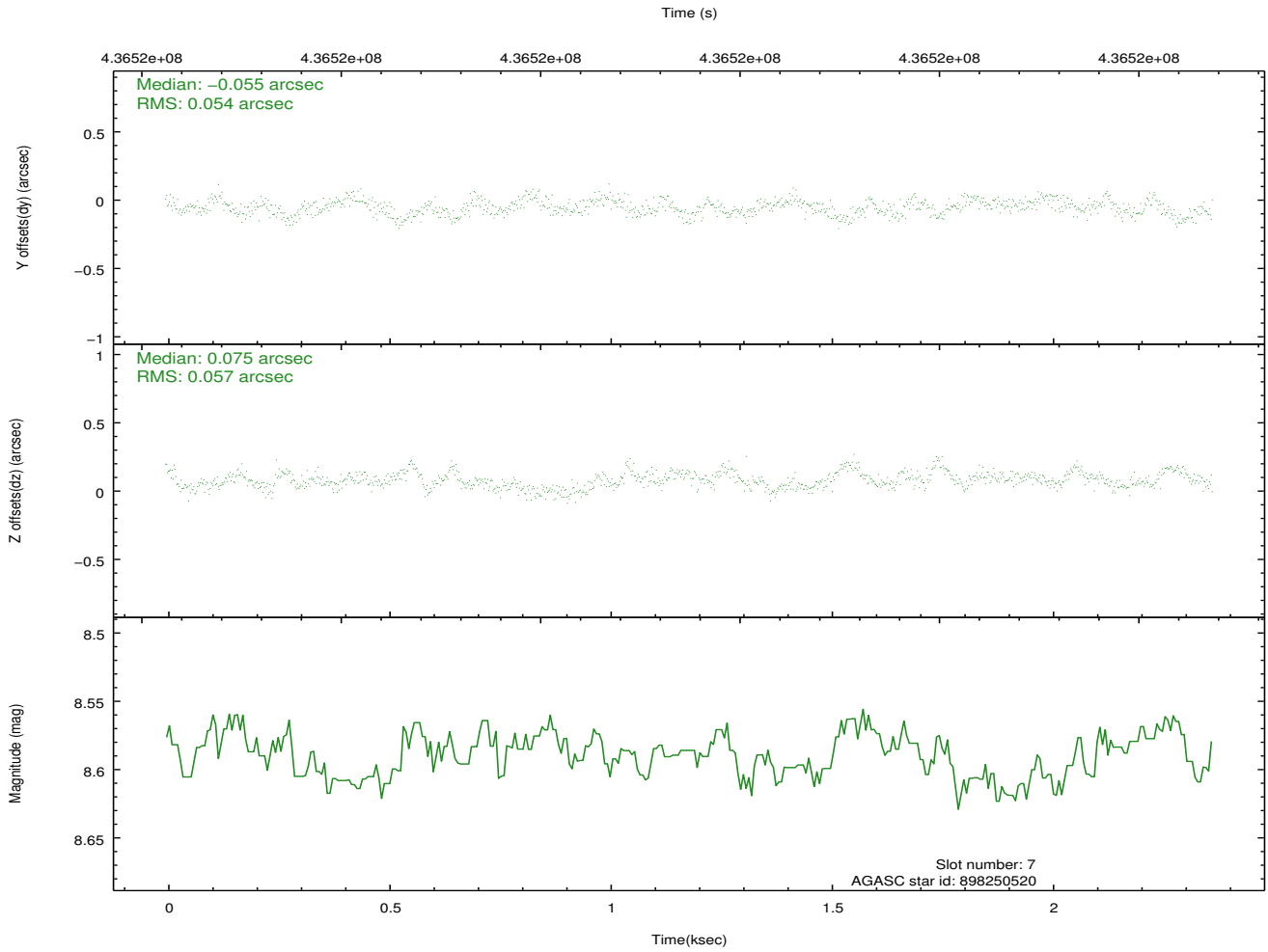
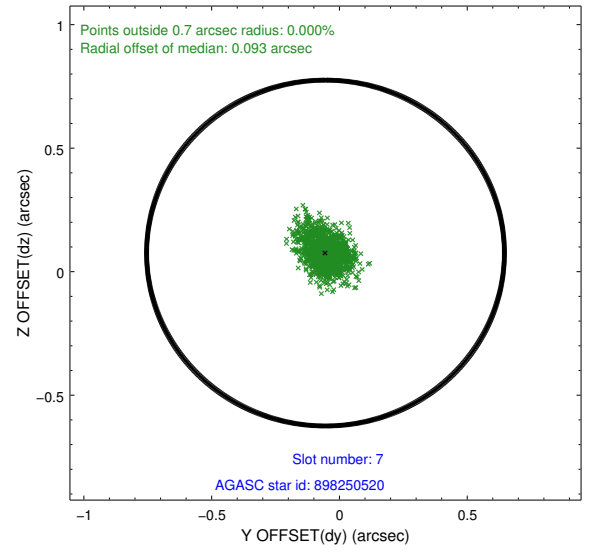
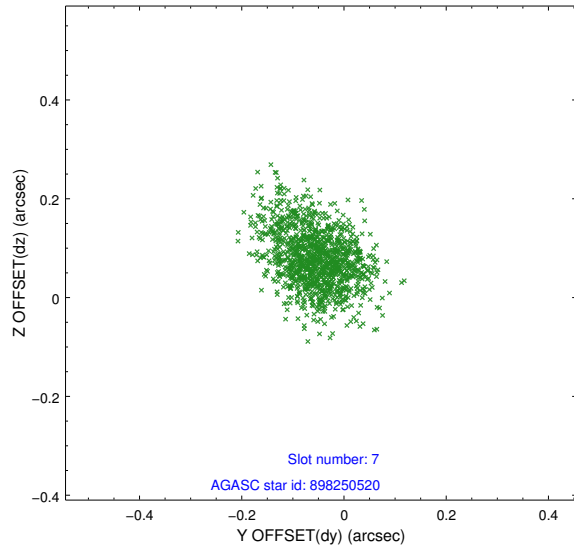
### 2.4.3 Slot 5



## 2.4.4 Slot 6

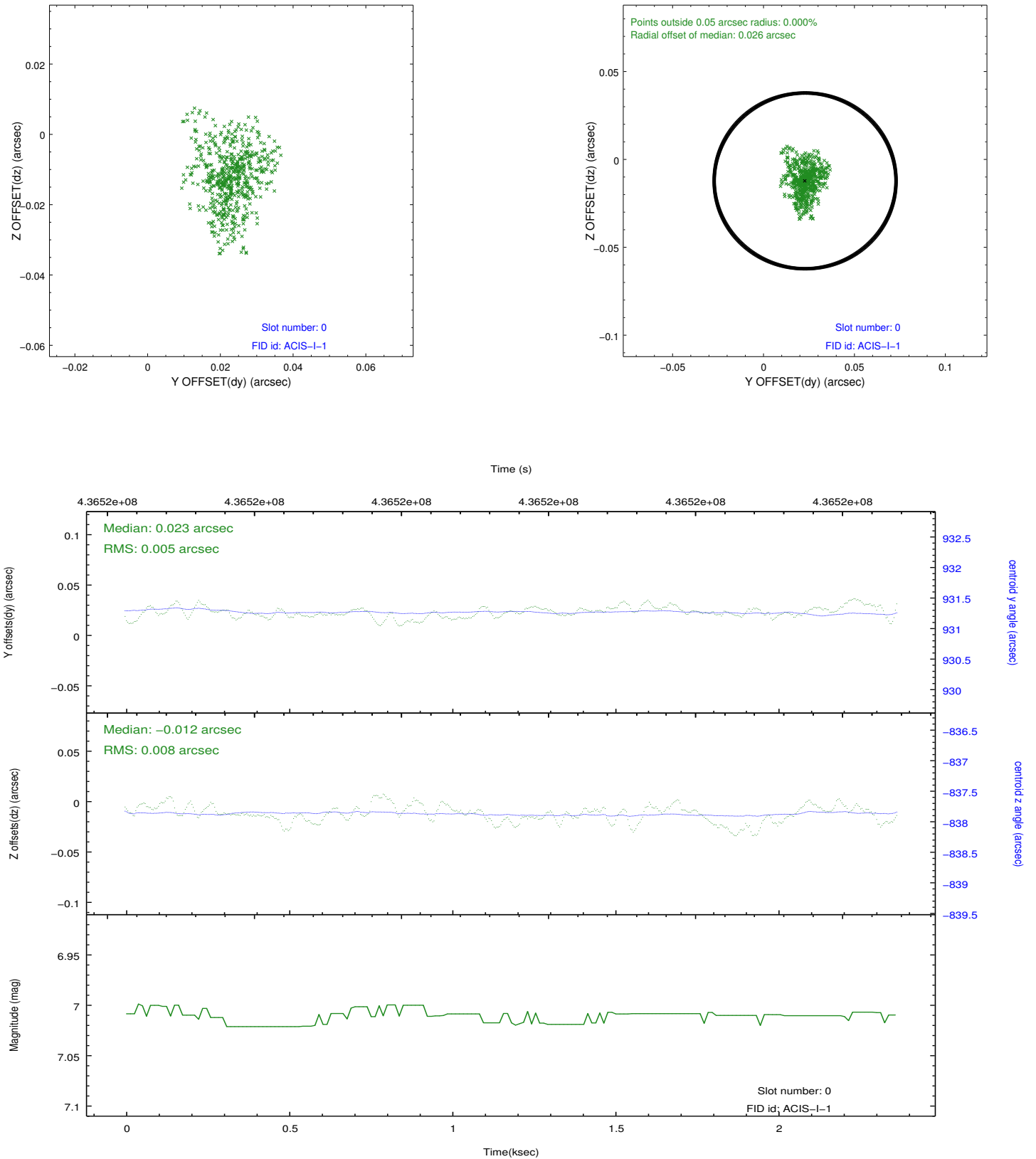


## 2.4.5 Slot 7

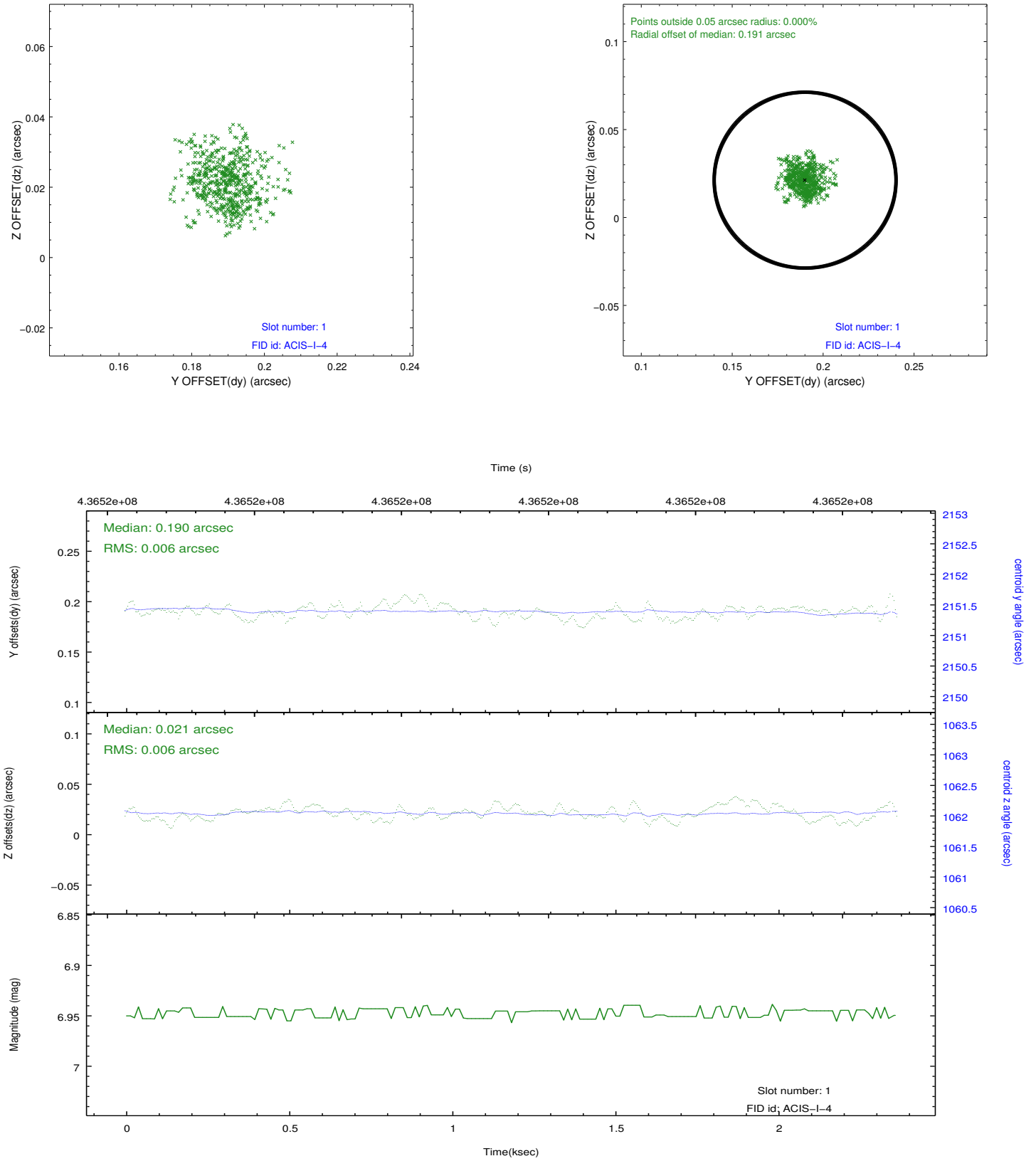


## 2.5 FID Slots

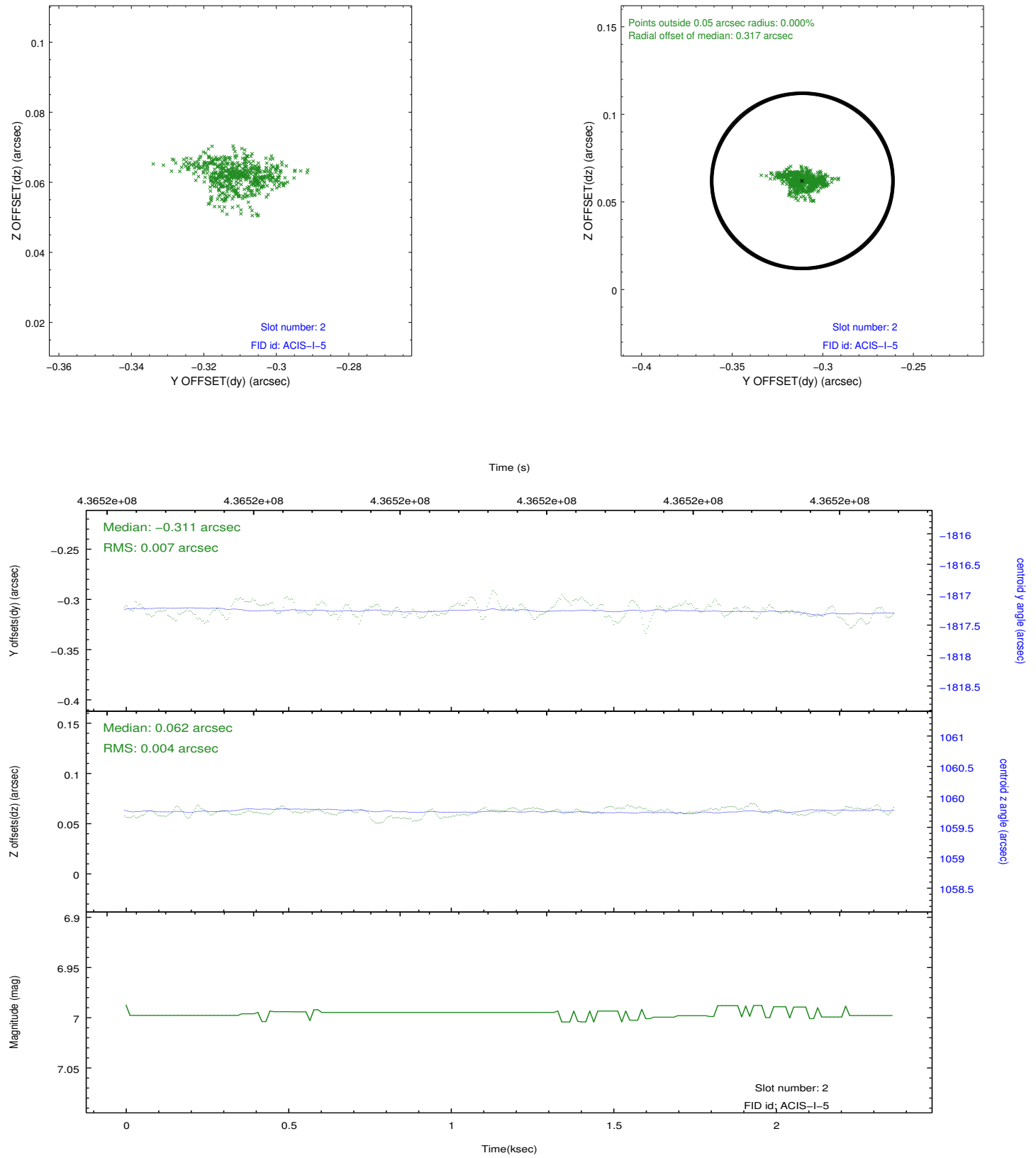
### 2.5.1 Slot 0



## 2.5.2 Slot 1



### 2.5.3 Slot 2





## A Summary

### A.1 Status

V&V Scientist	Jen Lauer
V&V Date (YYYY-MM-DD)	2012.02.27
V&V Edition	1
V&V Disposition and Status	OK
V&V Charge Time	1.9716000151634

### A.2 Comments

Joint Proposal: NOAO