

V&V Reference Report

L2 ASCDS Version : 8.4.4

Observation 13233 - L2 Version 2
Chandra X-Ray Center

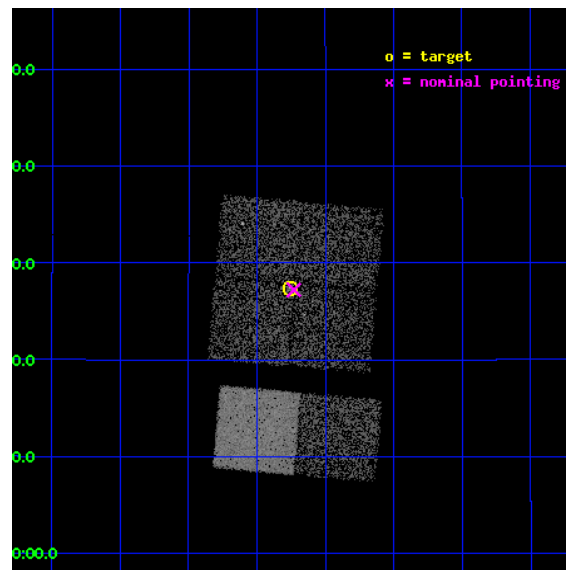
L2 Processing Date : Apr 23 2012

Contents

1	Front	2
2	OBI	3
2.1	OBI	3
2.1.1	Images	3
2.1.2	Bias	3
2.1.3	Parameters	4
2.1.4	Events	4
2.2	Compared Parameters	5
2.3	Aspect	6
2.4	Star Slots	9
2.4.1	Slot 3	9
2.4.2	Slot 4	10
2.4.3	Slot 6	11
2.4.4	Slot 7	12
2.5	FID Slots	13
2.5.1	Slot 0	13
2.5.2	Slot 1	14
2.5.3	Slot 2	15
A	Summary	16
A.1	Status	16
A.2	Comments	16

1 Front

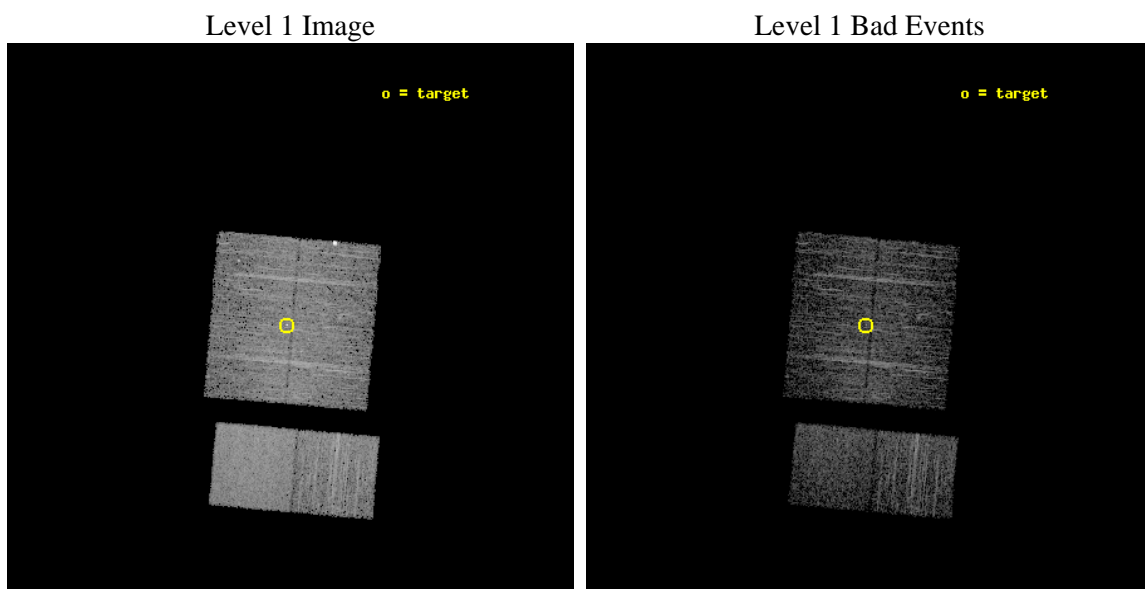
seq_num	200734	Sequence number
obs_id	13233	Observation id
title	tau Boo's magnetic polarity switch in X-rays - continued monitoring	
observer	Dr. Katja Poppenhaeger	Principal investigator
object	HD 120136	Source name
dtcycle	0	
cycle	P	events from which exps? Prim/Second/Both
ra_targ	206.815417	Observer's specified target RA [deg]
dec_targ	17.456917	Observer's specified target Dec [deg]
ra_nom	206.80749839824	Nominal RA [deg]
dec_nom	17.453818817105	Nominal Dec [deg]
roll_nom	185.02989774368	Nominal Roll [deg]
revision	2	Processing version of data
ontime	4965.8950501084	Sum of GTIs [s]
livetime	4903.0138968809	Livetime [s]
ontime0	4965.7719300985	Sum of GTIs [s]
ontime1	4965.8129701018	Sum of GTIs [s]
ontime2	4965.8540101051	Sum of GTIs [s]
ontime3	4965.8950501084	Sum of GTIs [s]
ontime6	4965.977130115	Sum of GTIs [s]
ontime7	4965.9360901117	Sum of GTIs [s]
l2events	32539	Number of level 2 events



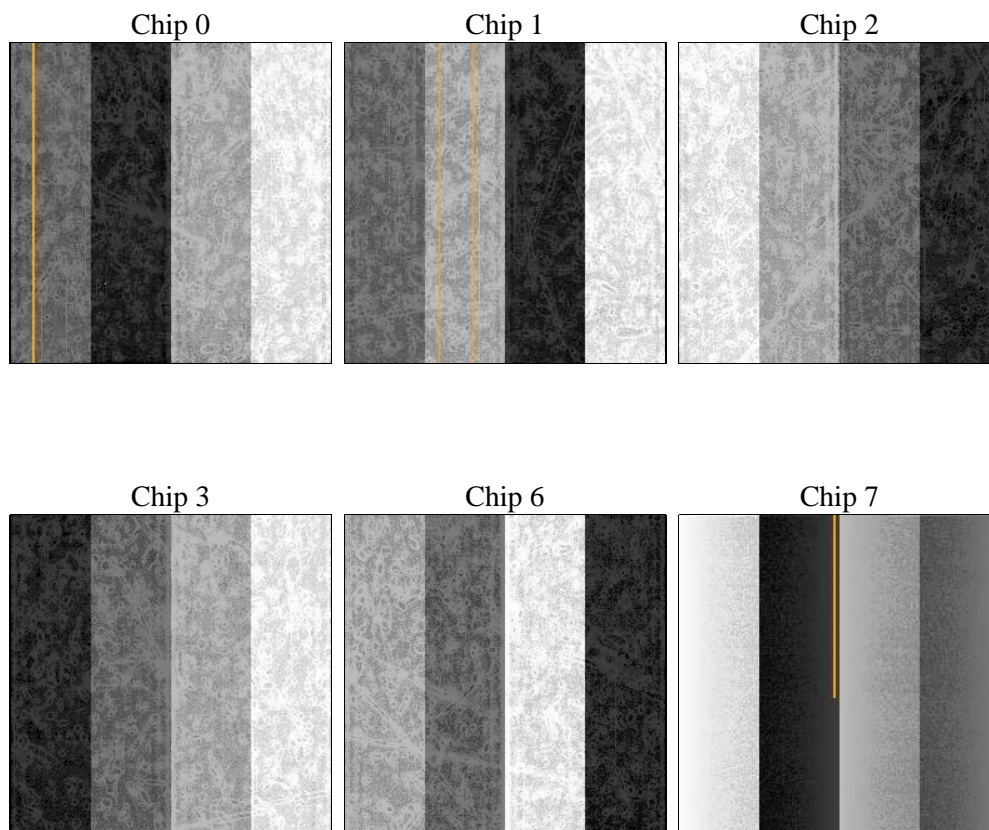
2 OBI

2.1 OBI

2.1.1 Images



2.1.2 Bias



2.1.3 Parameters

obi_num	0	Obi number	sched_exp_time	5000.000000	[s] Scheduled observation exposure time
ascdsver	8.4.4	Processing system revision	ontime	4965.8950501084	Sum of GTIs [s]
caldsver	4.4.9	 	ontime0	4965.7719300985	Sum of GTIs [s]
date	2012-04-23T16:32:38	Date and time of file creation	ontime1	4965.8129701018	Sum of GTIs [s]
revision	2	Processing version of data	ontime2	4965.8540101051	Sum of GTIs [s]
			ontime3	4965.8950501084	Sum of GTIs [s]
			ontime6	4965.9771301115	Sum of GTIs [s]
			ontime7	4965.9360901117	Sum of GTIs [s]
			l1events	186736	Number of level 1 events

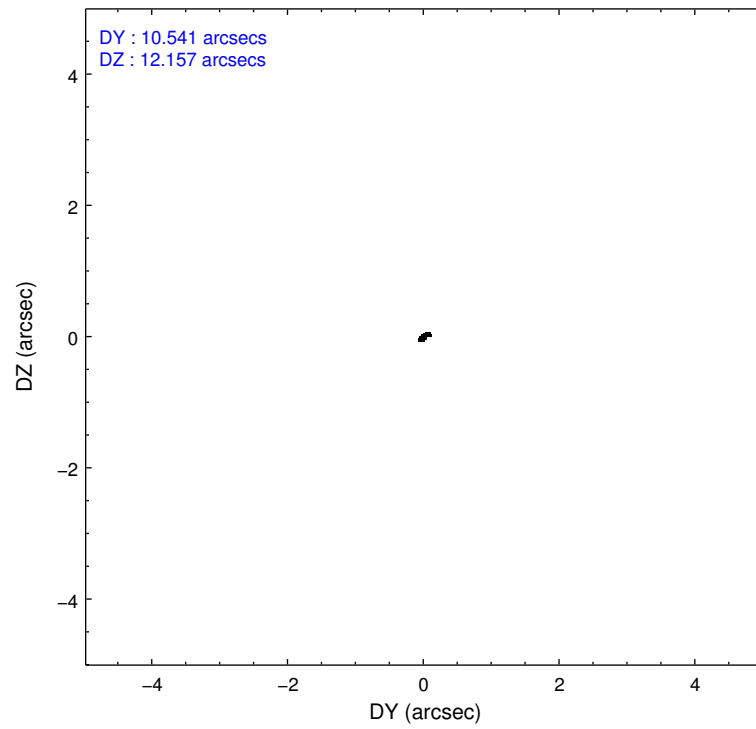
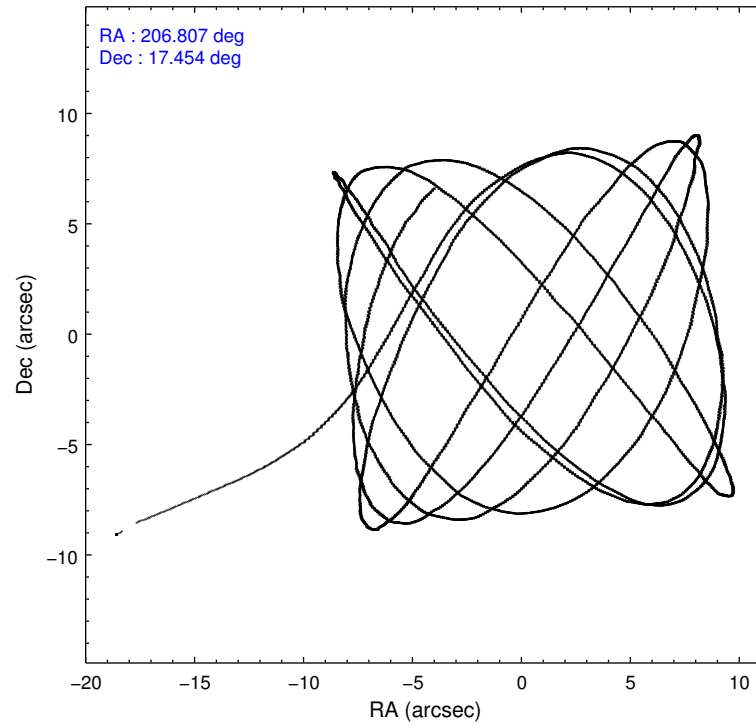
2.1.4 Events

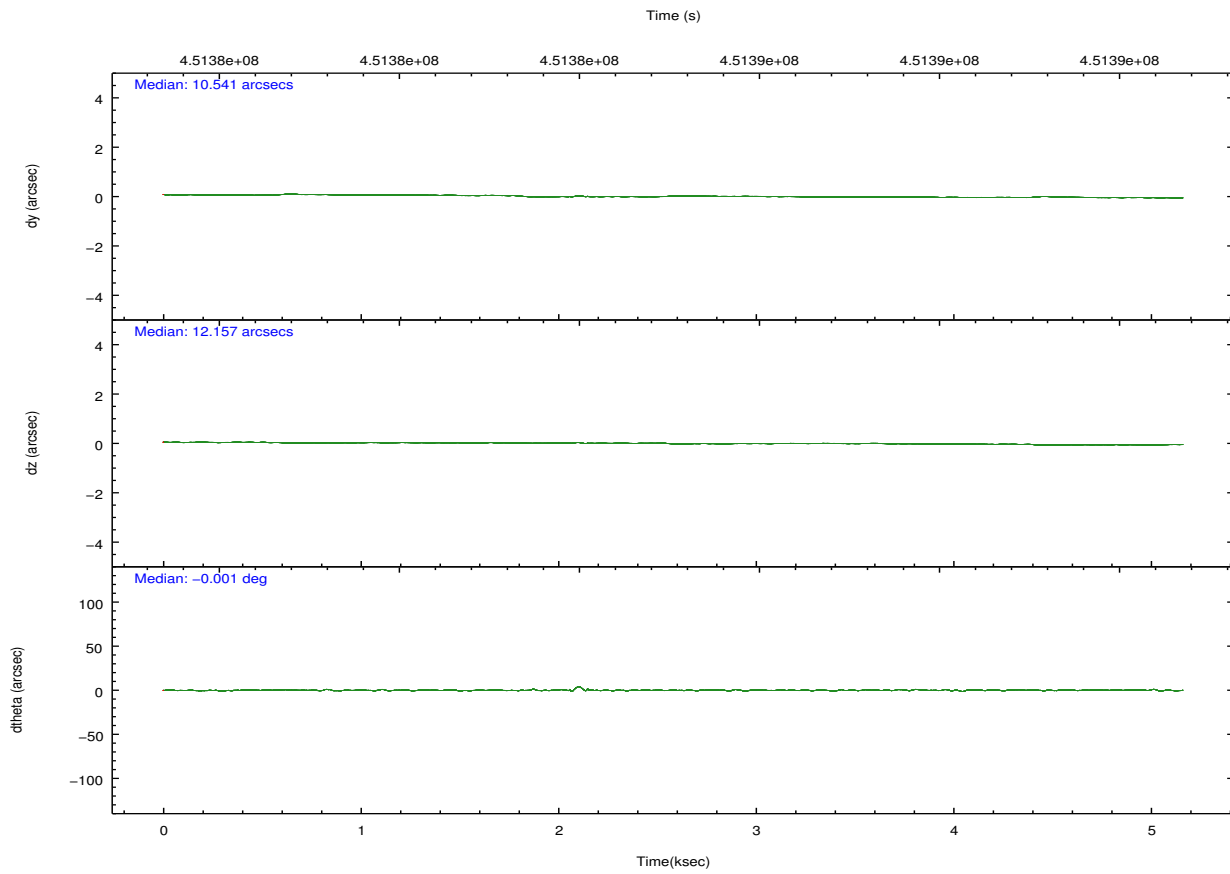
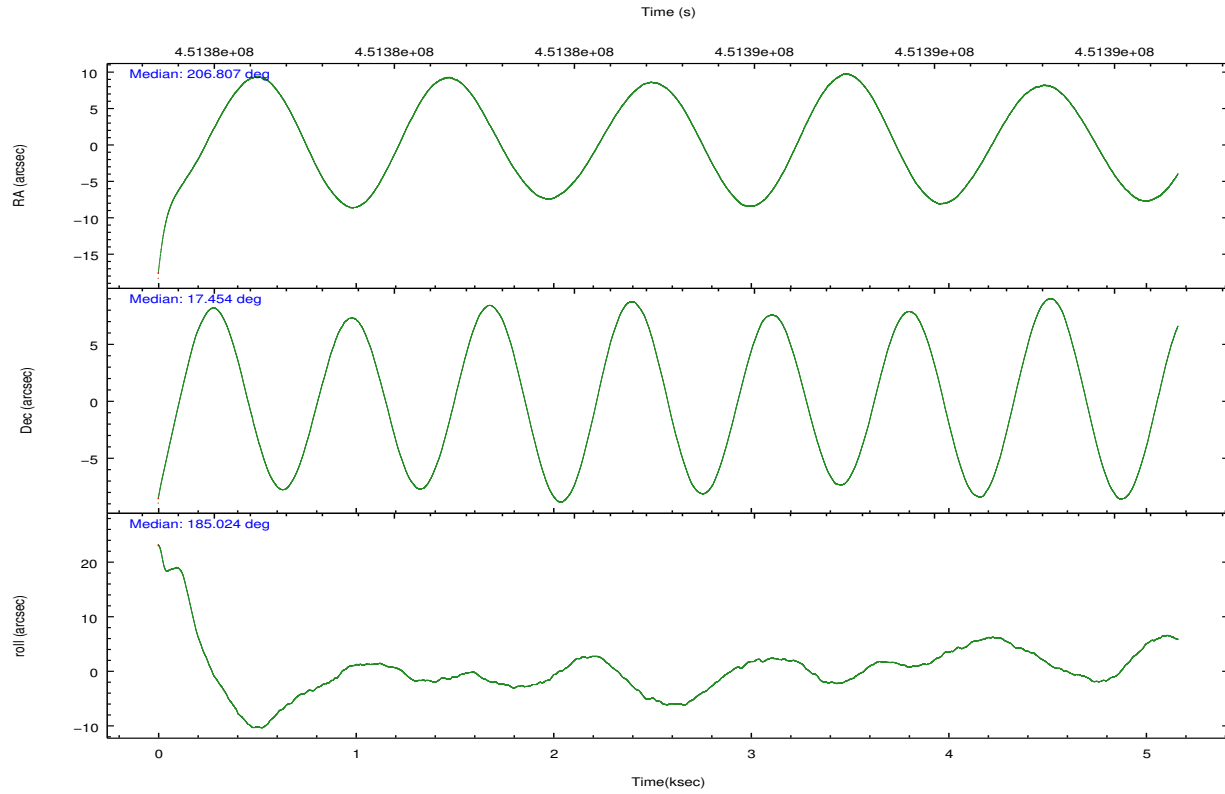
	ccd 0	ccd 1	ccd 2	ccd 3	ccd 6	ccd 7		ccd 0	ccd 1	ccd 2	ccd 3	ccd 6	ccd 7
level 1 events	30202	27601	30042	28428	31071	39392	grade 0 events	4135	1500	1292	1733	1300	1554
rejected events	23820	23635	26614	24496	27424	22133		13%	5%	4%	6%	4%	3%
rejected %	78%	85%	88%	86%	88%	56%	grade 1 events	30	18	20	52	10	45
								0%	0%	0%	0%	0%	0%
							grade 2 events	847	856	829	781	811	3571
								2%	3%	2%	2%	2%	9%
							grade 3 events	331	429	339	360	385	1504
								1%	1%	1%	1%	1%	3%
							grade 4 events	348	368	327	331	362	1428
								1%	1%	1%	1%	1%	3%
							grade 5 events	1356	1325	1292	1486	1485	4017
								4%	4%	4%	5%	4%	10%
							grade 6 events	728	818	645	728	797	9228
								2%	2%	2%	2%	2%	23%
							grade 7 events	22427	22287	25298	22957	25921	18045
								74%	80%	84%	80%	83%	45%

2.2 Compared Parameters

Parameter	Planned	Actual	Parameter	Planned	Actual
Instrument	ACIS	ACIS	Obspar format version number	7	7
Detector	ACIS-012367	ACIS-012367	Obspar file type	PREDICTED	ACTUAL
Grating	NONE	NONE	Obspar update status	NONE	UPDATED
Data mode	FAINT	FAINT	CCD I0 on	Y	Y
Observation mode	POINTING	POINTING	CCD I1 on	Y	Y
[deg] Pointing RA	206.831123	206.8074983982362	CCD I2 on	Y	Y
[deg] Pointing Dec	17.469721	17.45381881710475	CCD I3 on	Y	Y
[deg] Pointing Roll	184.814120	185.0298977436815	CCD S0 on	N	N
[mm] SIM focus pos	-0.782348	-0.7809083437167272	CCD S1 on	N	N
[mm] SIM defocus	0	0.001439871863259334	CCD S2 on	O2	Y
[mm] SIM translation stage pos	-233.592463	-233.5874344608287	CCD S3 on	O1	Y
[mm] SIM translation stage offset	0	-0.005018542100998502	CCD S4 on	N	N
[s] Observation start time (MET)	451383104.184000	451381445.13019	CCD S5 on	N	N
Observation start date	2012-04-21T08:10:38	2012-04-21T07:44:05	Number of optional ACIS chips dropped	0	0
[s] Observation end time (MET)	451388104.184000	451389081.38059	On-chip summing requested	N	N
Observation end date	2012-04-21T09:33:58	2012-04-21T09:51:21	Subarray requested	NONE	NONE
Read mode	TIMED	TIMED	Alternating exposures requested	N	N
			[s] Primary exposure time	0.000000	3.2

2.3 Aspect



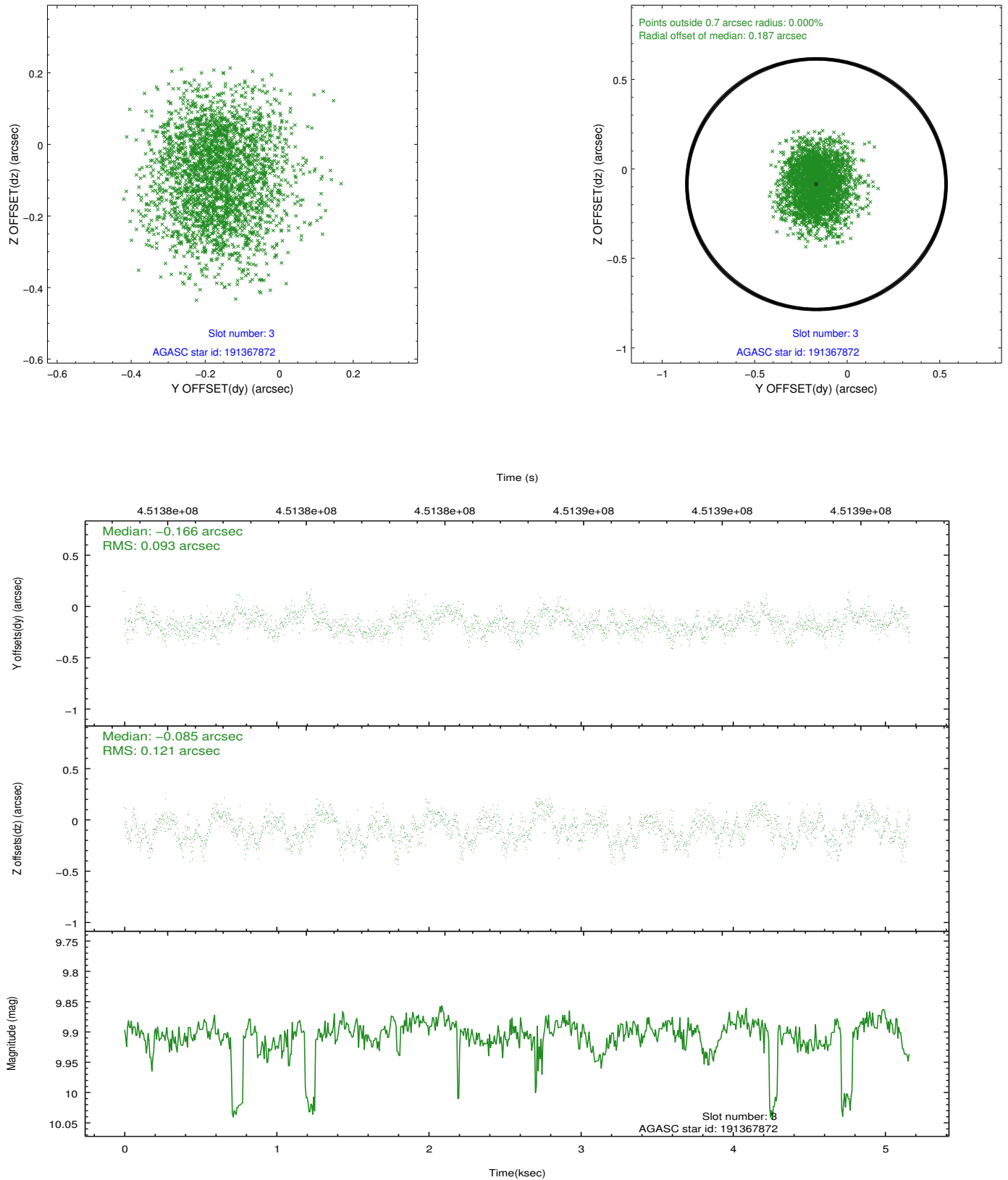


Slot Statistics

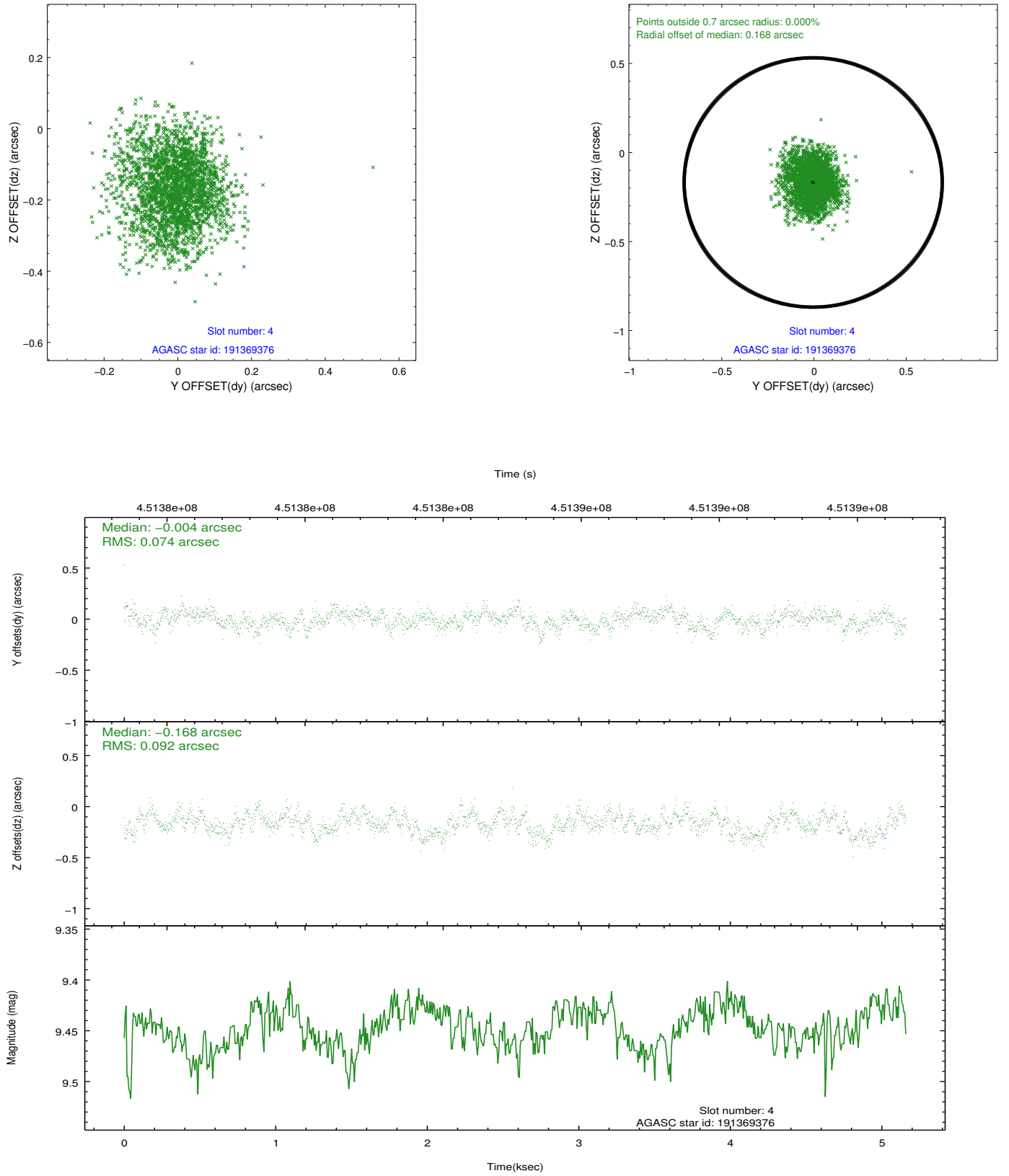
slot	status	id	mag	n_pts	med_dy	med_dz	dr1	dr2	ra	dec	mean_y	mean_z
0	FID	ACIS-I-1	7.14	1260	0.073	-0.024	0.006	0.011	0.000000	0.000000	929.09	-835.71
1	FID	ACIS-I-5	7.11	1259	-0.189	0.085	0.006	0.011	0.000000	0.000000	-1818.61	1061.33
2	FID	ACIS-I-6	7.13	1260	0.025	0.009	0.007	0.010	0.000000	0.000000	393.34	1707.06
3	GUIDE	191367872	9.90	2512	-0.166	-0.085	0.163	0.263	206.695374	16.878779	644.11	2080.51
4	GUIDE	191369376	9.45	2514	-0.004	-0.168	0.125	0.204	206.887864	16.920737	-28.99	1986.55
5	OMITTED		0.00	0	0.000	0.000	0.000	0.000	0.000000	0.000000	0.00	0.00
6	GUIDE	191765024	9.07	2516	0.081	0.164	0.097	0.152	207.333670	17.693483	-1784.65	-659.60
7	GUIDE	191766032	8.13	2518	0.091	0.092	0.072	0.115	207.355598	17.879340	-1914.96	-1321.49

2.4 Star Slots

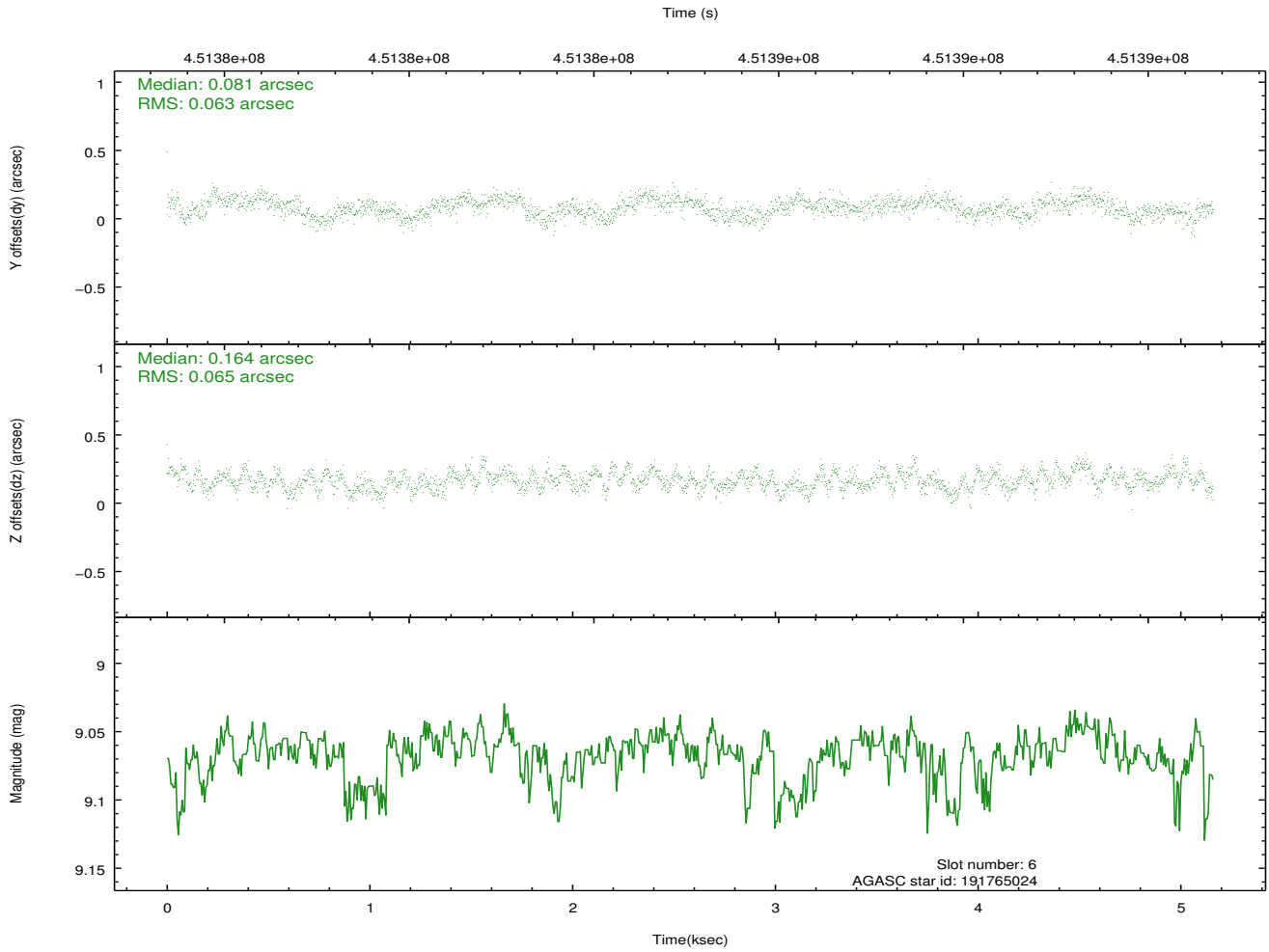
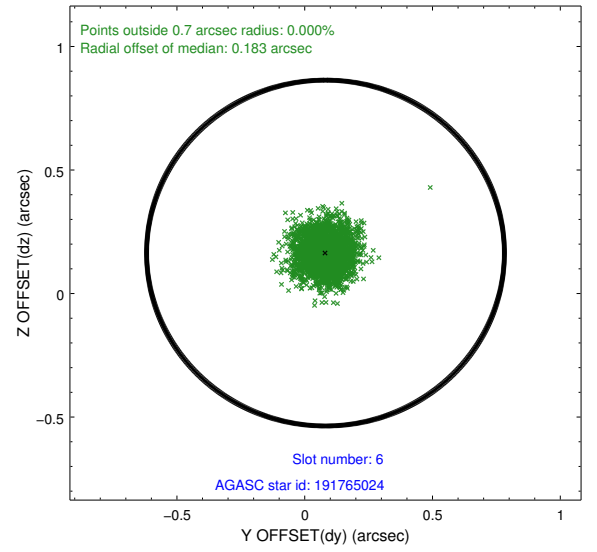
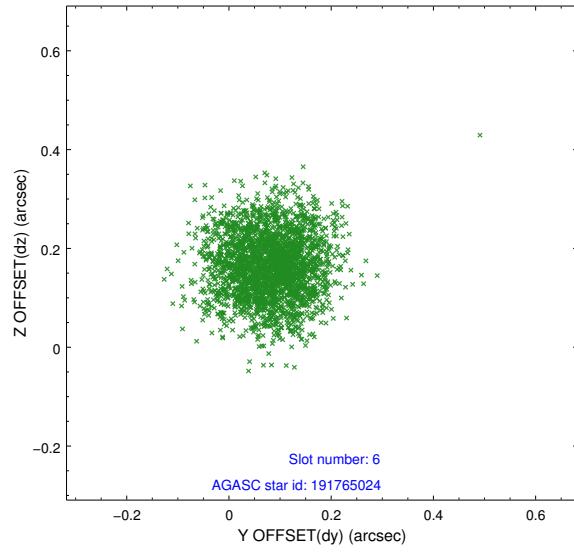
2.4.1 Slot 3



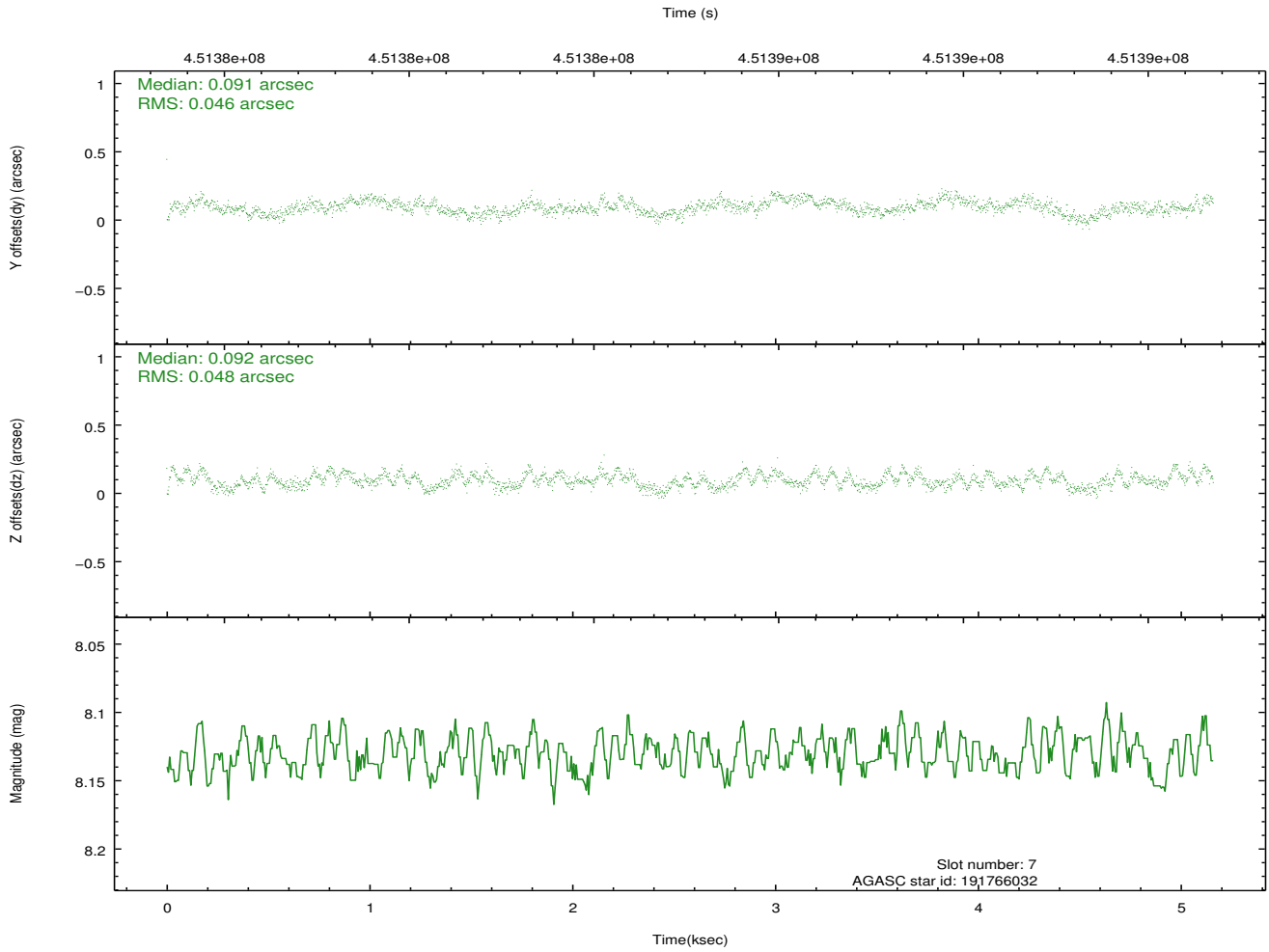
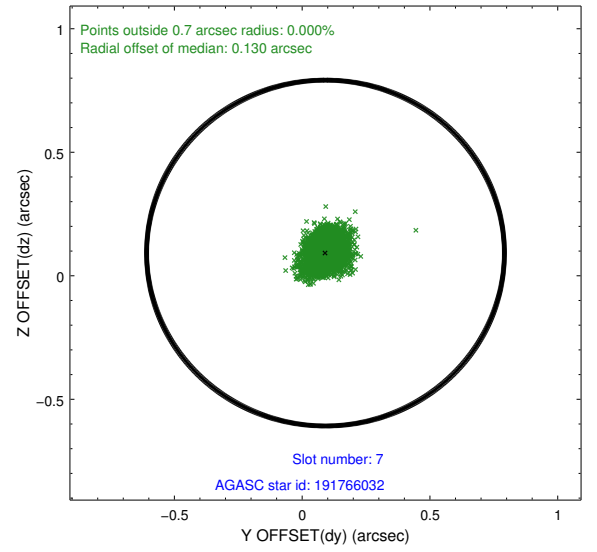
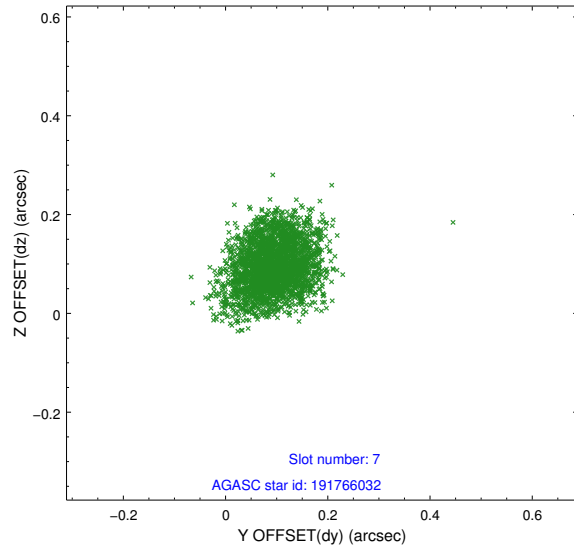
2.4.2 Slot 4



2.4.3 Slot 6

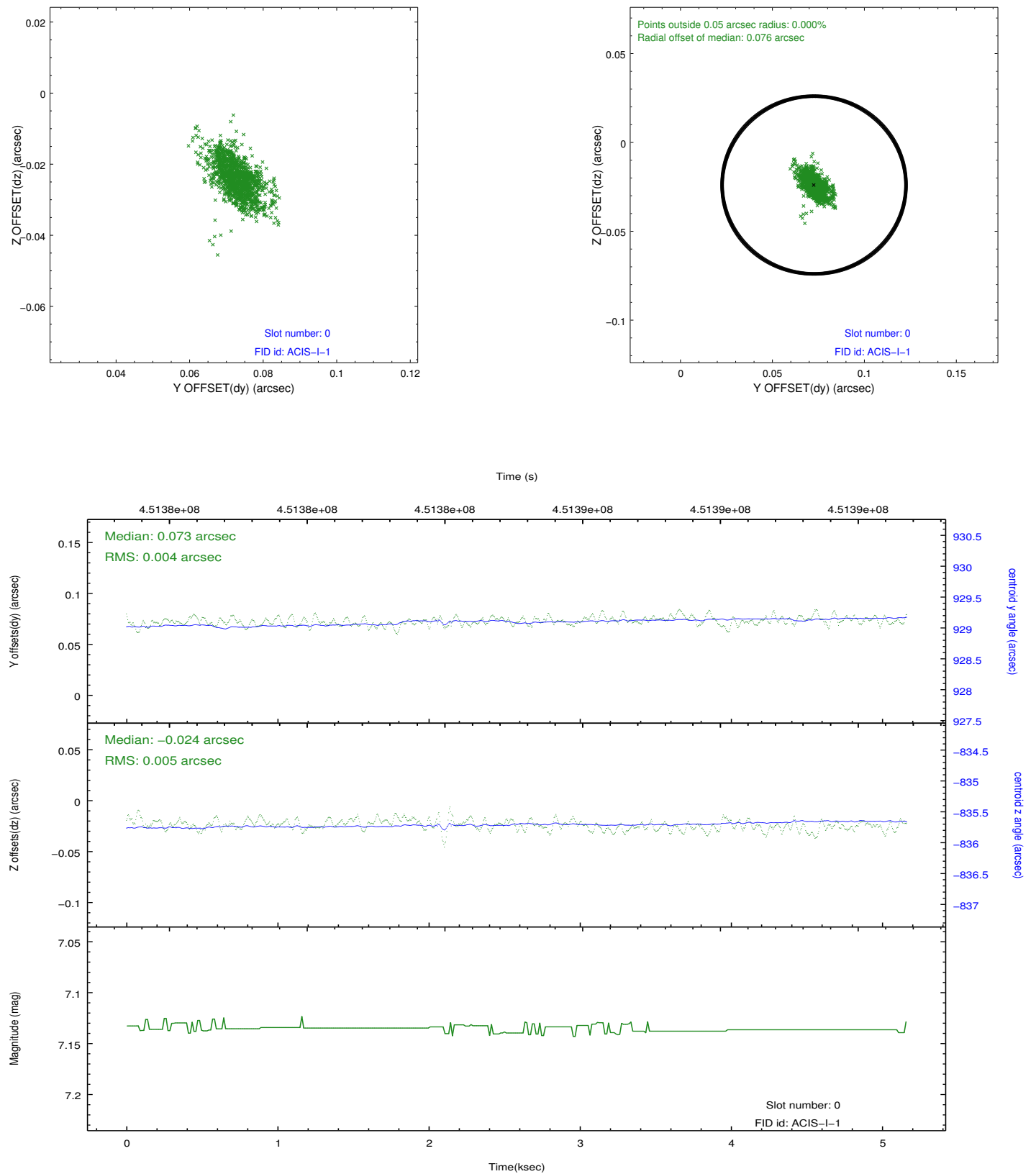


2.4.4 Slot 7

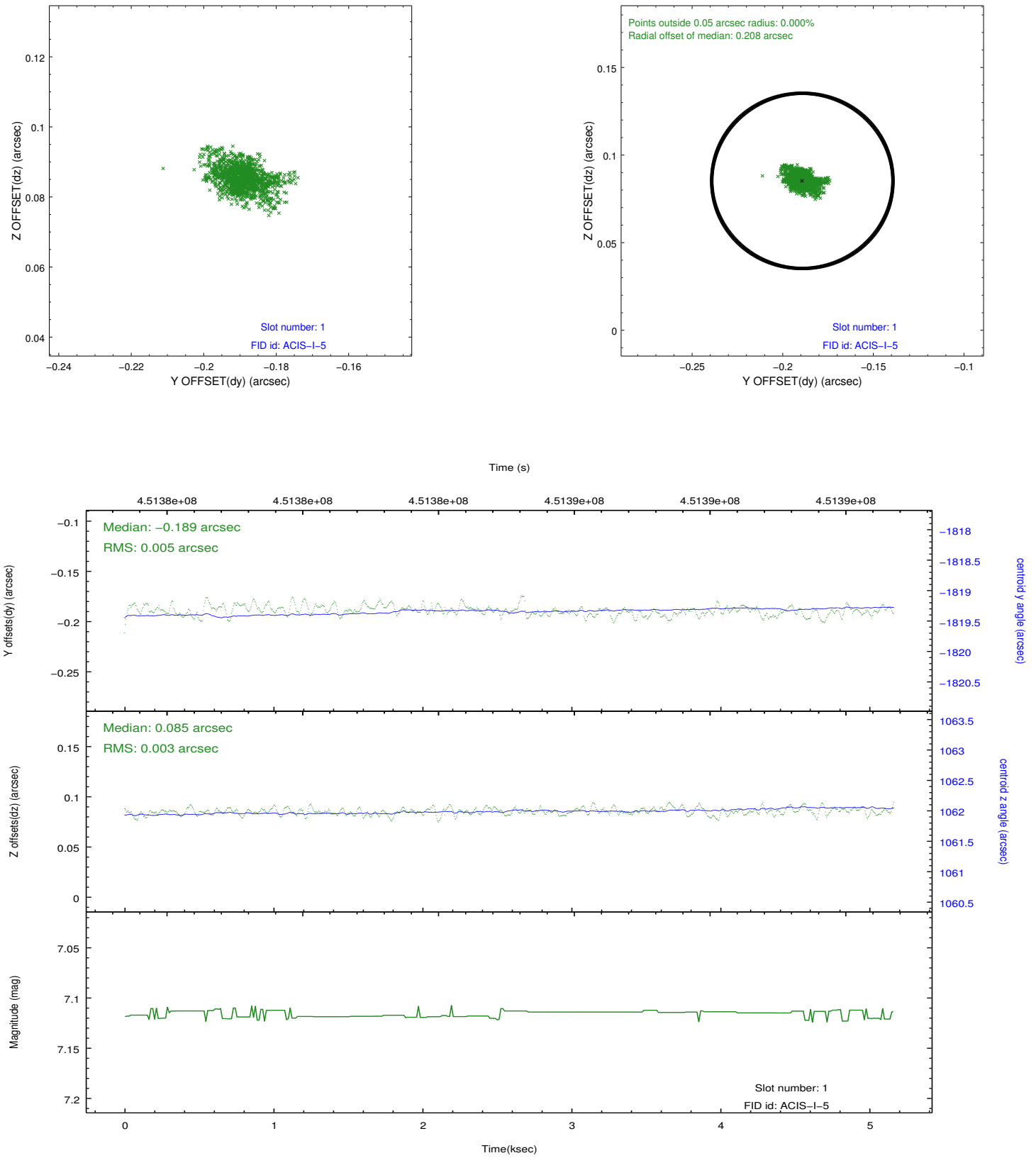


2.5 FID Slots

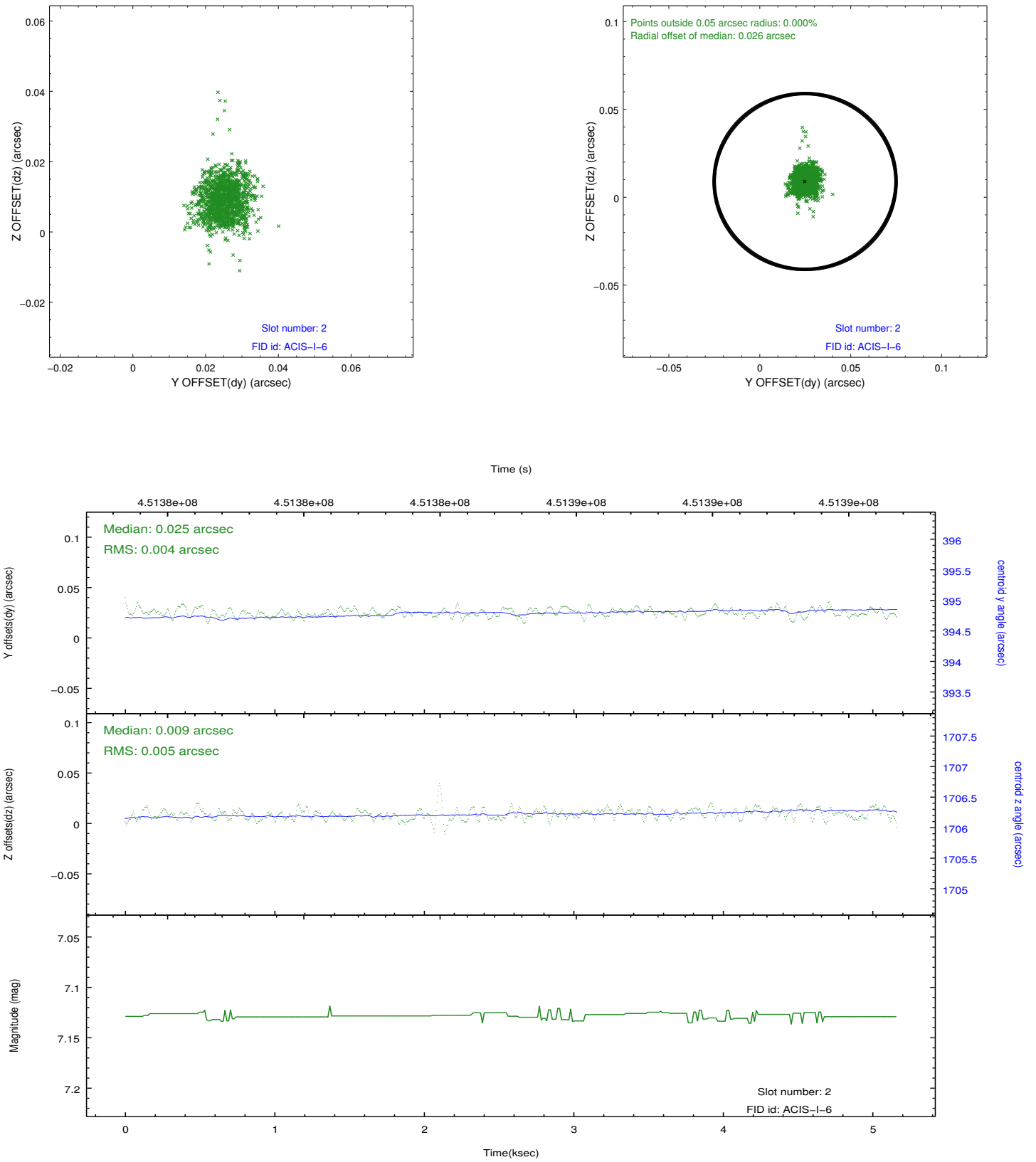
2.5.1 Slot 0



2.5.2 Slot 1



2.5.3 Slot 2



A Summary

A.1 Status

V&V Scientist	Beth Sundheim
V&V Date (YYYY-MM-DD)	2012.04.24
V&V Edition	1
V&V Disposition and Status	OK
V&V Charge Time	4.9658950501084

A.2 Comments

Joint proposal with XMM.

The guide star in slot 5 was removed from the aspect solution due to poor data quality. The aspect solution is improved by the removal of this star from the solution.