

# V&V Reference Report

## L2 ASCDS Version : 8.4.5

Observation 13183 - L2 Version 2  
Chandra X-Ray Center

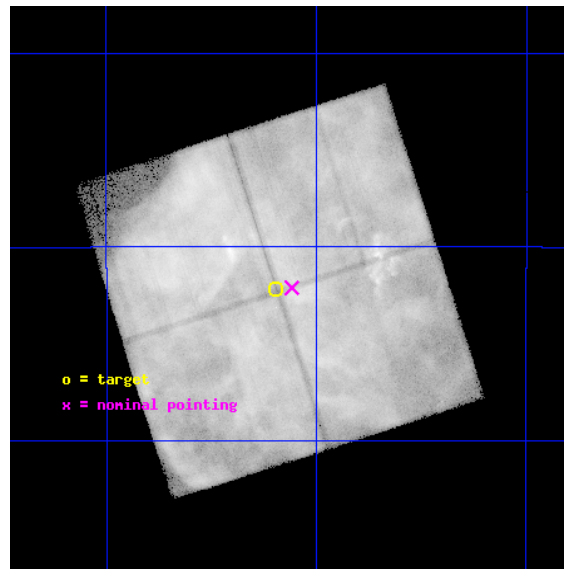
L2 Processing Date : Jul 6 2012

## Contents

<b>1</b>	<b>Front</b>	<b>2</b>
<b>2</b>	<b>OBI</b>	<b>3</b>
2.1	OBI . . . . .	3
2.1.1	Images . . . . .	3
2.1.2	Bias . . . . .	3
2.1.3	Parameters . . . . .	4
2.1.4	Events . . . . .	4
2.2	Compared Parameters . . . . .	5
2.3	Aspect . . . . .	6
2.4	Star Slots . . . . .	9
2.4.1	Slot 3 . . . . .	9
2.4.2	Slot 4 . . . . .	10
2.4.3	Slot 5 . . . . .	11
2.4.4	Slot 6 . . . . .	12
2.4.5	Slot 7 . . . . .	13
2.5	FID Slots . . . . .	14
2.5.1	Slot 0 . . . . .	14
2.5.2	Slot 1 . . . . .	15
2.5.3	Slot 2 . . . . .	16
<b>A</b>	<b>Summary</b>	<b>17</b>
A.1	Status . . . . .	17
A.2	Comments . . . . .	17

# 1 Front

seq_num	501381	Sequence number
obs_id	13183	Observation id
title	X-Ray Time Variability of an Ejecta Filament in Puppis A	Proposal
observer	Dr. Satoru Katsuda	Principal investigator
object	Puppis A NE filament	Source name
dtcycle	0	&#160
cycle	P	events from which exps? Prim/Second/Both
ra_targ	125.7981	Observer's specified target RA [deg]
dec_targ	-42.8692	Observer's specified target Dec [deg]
ra_nom	125.77921102913	Nominal RA [deg]
dec_nom	-42.86883738186	Nominal Dec [deg]
roll_nom	72.195828237224	Nominal Roll [deg]
revision	2	Processing version of data
ontime	13317.877835631	Sum of GTIs [s]
livetime	13143.86995723	Livetime [s]
ontime0	12017.47170347	Sum of GTIs [s]
ontime1	13317.877835631	Sum of GTIs [s]
ontime2	12564.081324756	Sum of GTIs [s]
ontime3	13616.326632023	Sum of GTIs [s]
l2events	2757949	Number of level 2 events

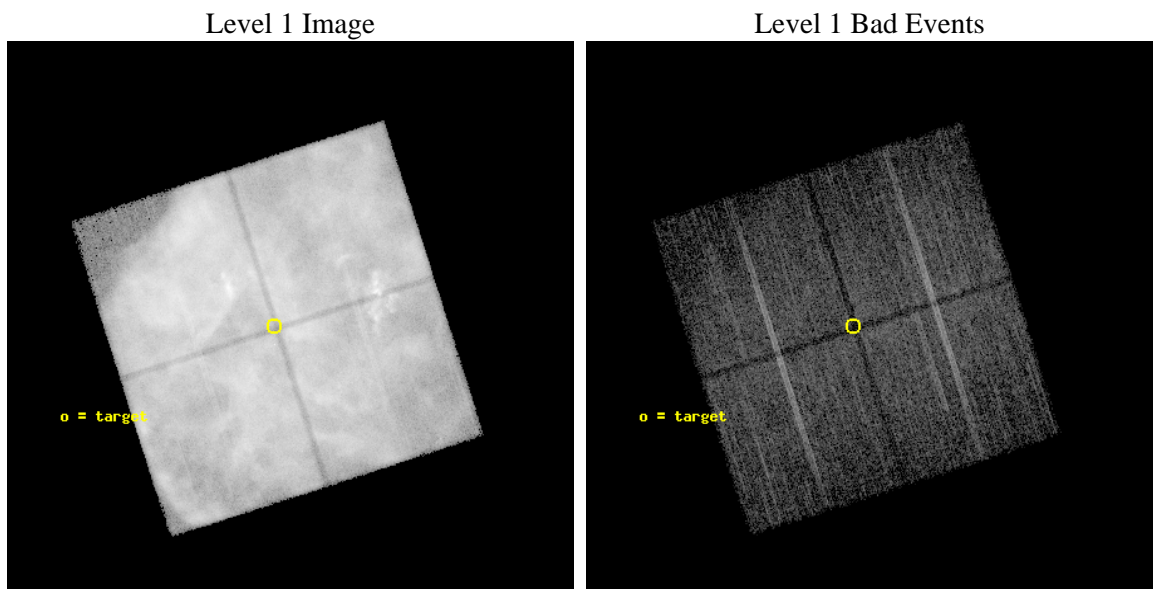




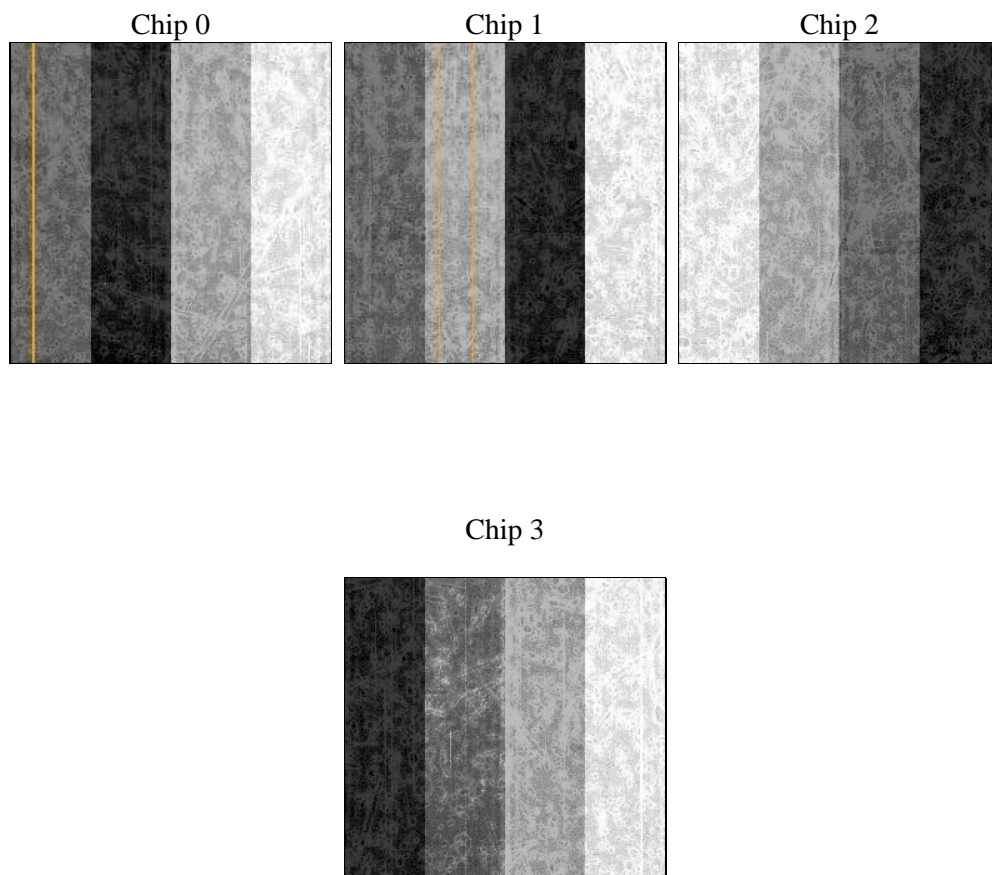
## 2 OBI

### 2.1 OBI

#### 2.1.1 Images



#### 2.1.2 Bias



### 2.1.3 Parameters

obi_num	0	Obi number	sched_exp_time	18000.000000	[s] Scheduled observation exposure time
ascdsver	8.4.5	Processing system revision	ontime	13317.877835631	Sum of GTIs [s]
caldsver	4.5.0	&#160	ontime0	12017.47170347	Sum of GTIs [s]
date	2012-07-06T13:27:25	Date and time of file creation	ontime1	13317.877835631	Sum of GTIs [s]
revision	2	Processing version of data	ontime2	12564.081324756	Sum of GTIs [s]
			ontime3	13616.326632023	Sum of GTIs [s]
			l1events	3288361	Number of level 1 events

### 2.1.4 Events

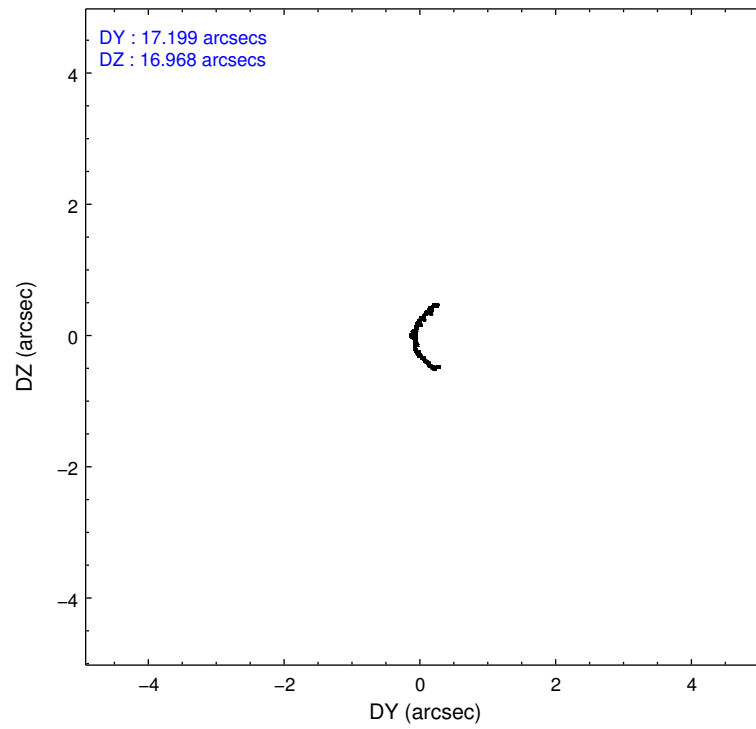
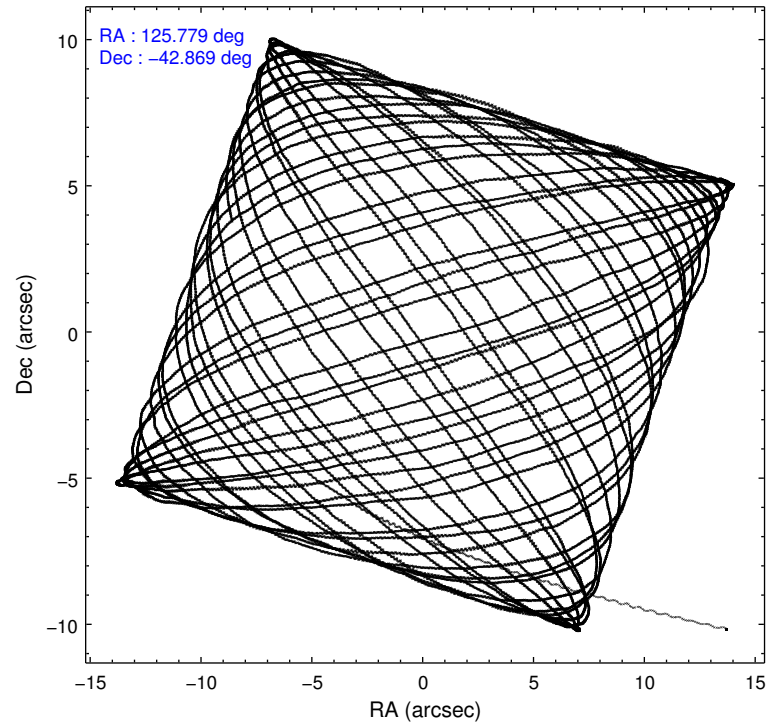
	ccd 0	ccd 1	ccd 2	ccd 3
level 1 events	1000187	775148	817265	695761
rejected events	83614	88916	90960	94702
rejected %	8%	11%	11%	13%

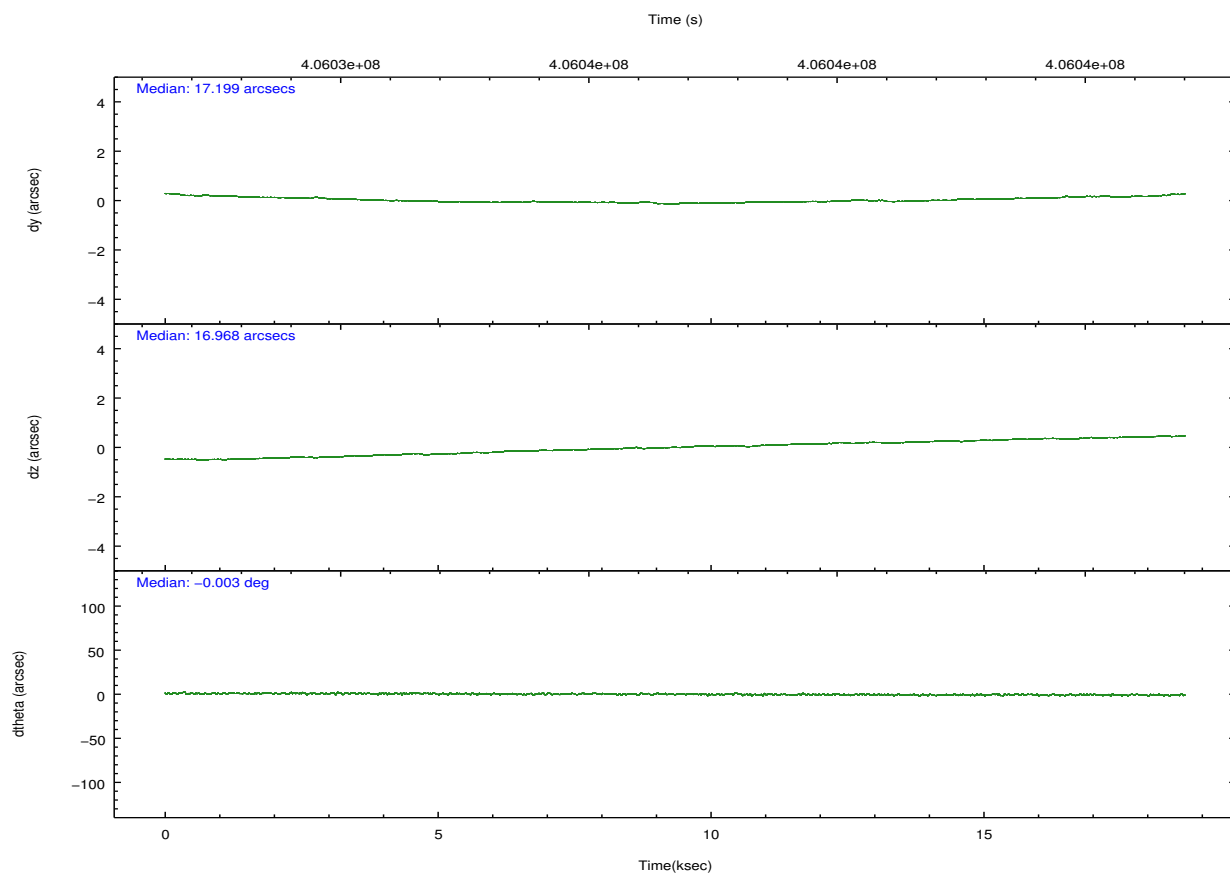
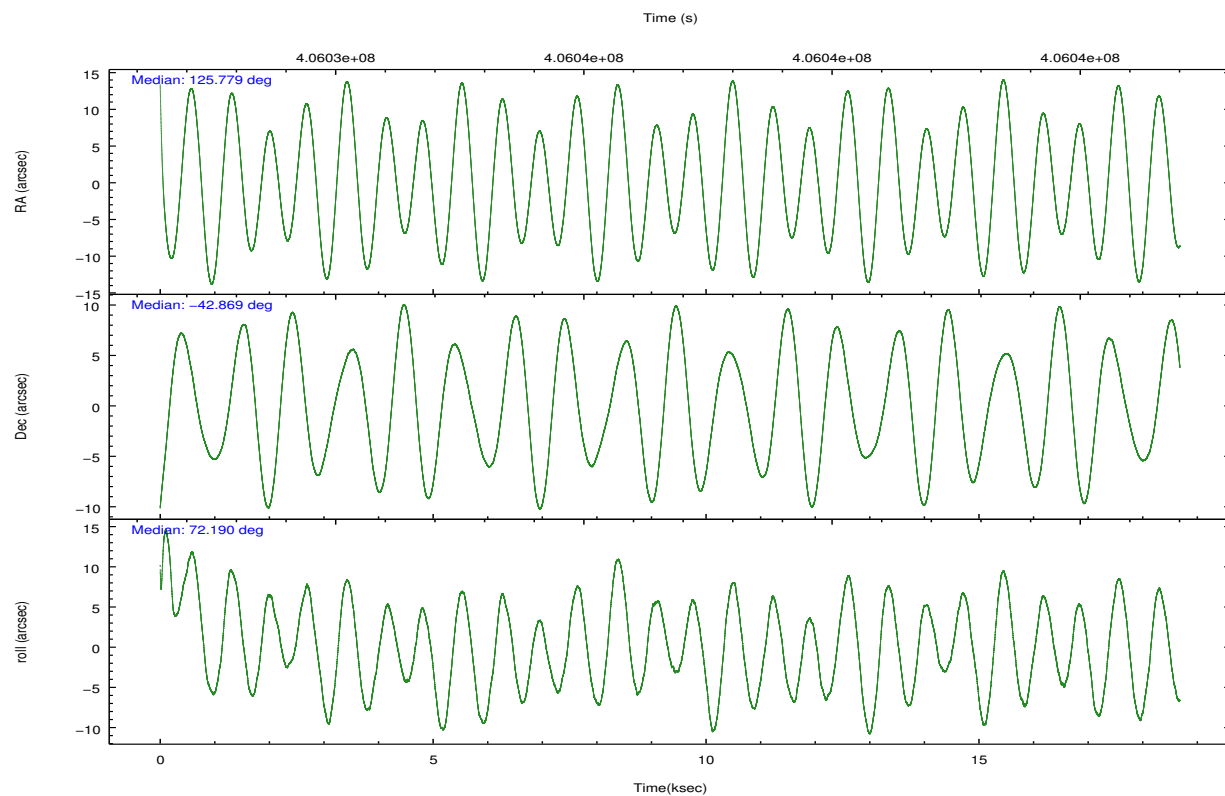
	ccd 0	ccd 1	ccd 2	ccd 3
grade 0 events	799649	600159	637816	528731
	79%	77%	78%	75%
grade 1 events	4321	2800	3596	2934
	0%	0%	0%	0%
grade 2 events	70944	52865	54138	43955
	7%	6%	6%	6%
grade 3 events	18381	13000	13897	11227
	1%	1%	1%	1%
grade 4 events	18230	12944	13604	11215
	1%	1%	1%	1%
grade 5 events	6550	6278	5844	6331
	0%	0%	0%	0%
grade 6 events	9588	7426	7015	6055
	0%	0%	0%	0%
grade 7 events	72524	79676	81355	85313
	7%	10%	9%	12%

## 2.2 Compared Parameters

Parameter	Planned	Actual	Parameter	Planned	Actual
Instrument	ACIS	ACIS	Obspar format version number	7	7
Detector	ACIS-0123	ACIS-0123	Obspar file type	PREDICTED	ACTUAL
Grating	NONE	NONE	Obspar update status	NONE	UPDATED
Data mode	FAINT	FAINT	Number of optional ACIS chips dropped	0	0
Observation mode	POINTING	POINTING	On-chip summing requested	N	N
[deg] Pointing RA	125.787299	125.7792110291251	Subarray requested	NONE	NONE
[deg] Pointing Dec	-42.895712	-42.86883738186008	Alternating exposures requested	N	N
[deg] Pointing Roll	71.992654	72.19582823722388	[s] Primary exposure time	0.000000	3.1
[mm] SIM focus pos	-0.782348	-0.7809083437167272			
[mm] SIM defocus	0	0.001439871863259334			
[mm] SIM translation stage pos	-233.592463	-233.5874344608287			
[mm] SIM translation stage offset	0	-0.005018542100998502			
[s] Observation start time (MET)	406028075.184000	406026510.98093			
Observation start date	2010-11-13T09:33:29	2010-11-13T09:08:30			
[s] Observation end time (MET)	406046075.184000	406046677.85697			
Observation end date	2010-11-13T14:33:29	2010-11-13T14:44:37			
Read mode	TIMED	TIMED			

## 2.3 Aspect



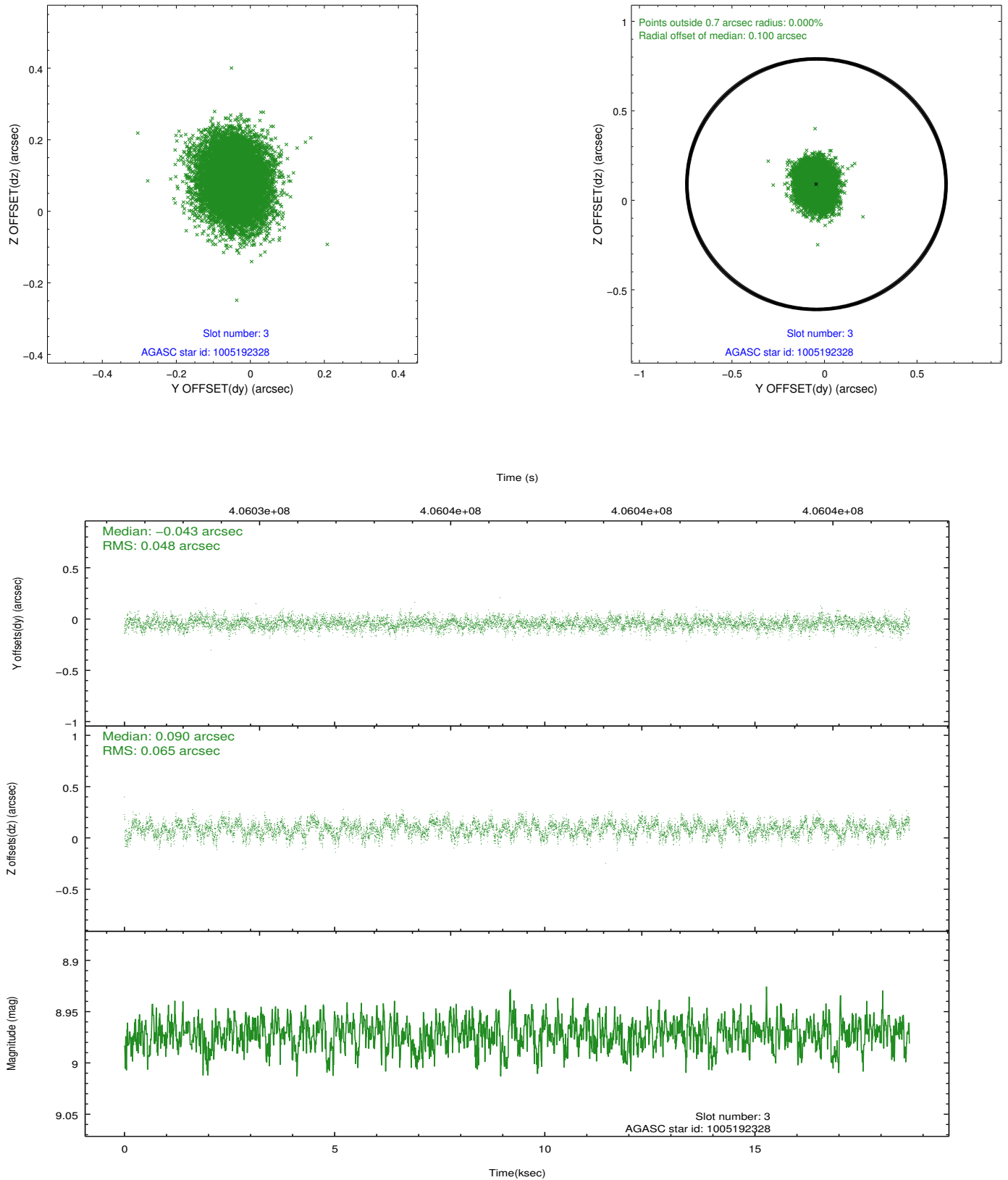


### Slot Statistics

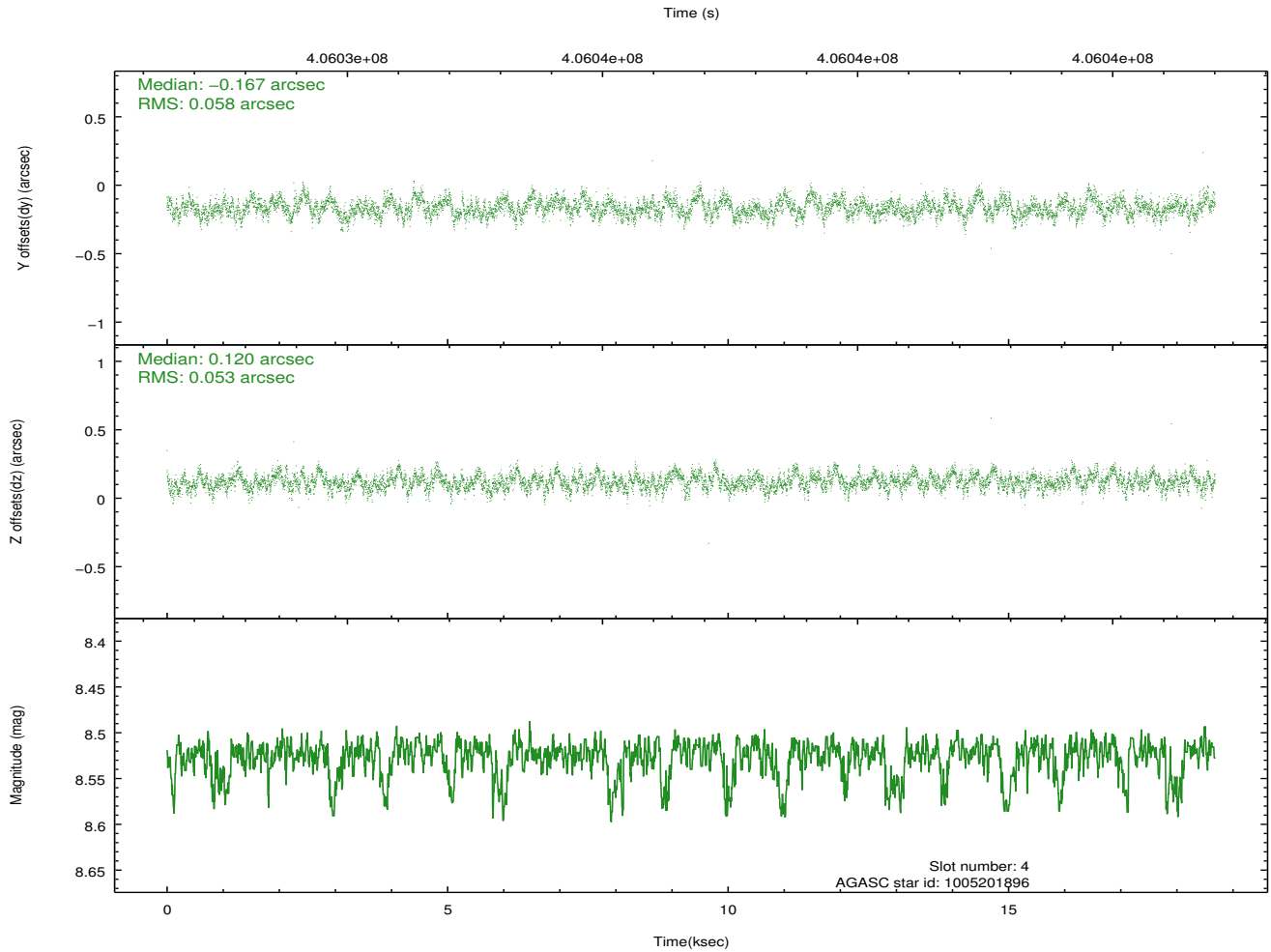
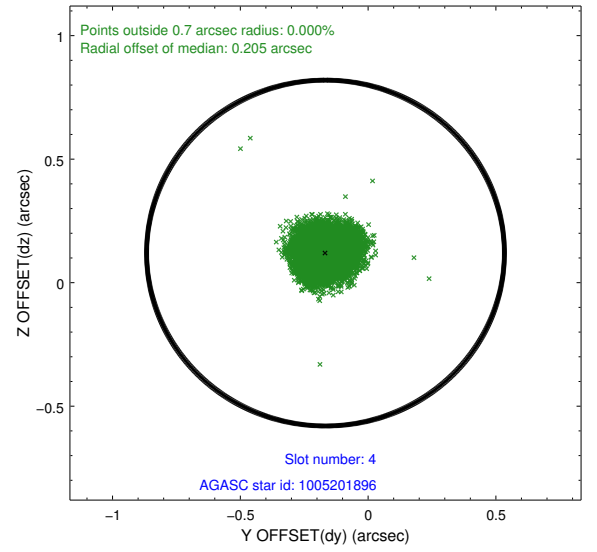
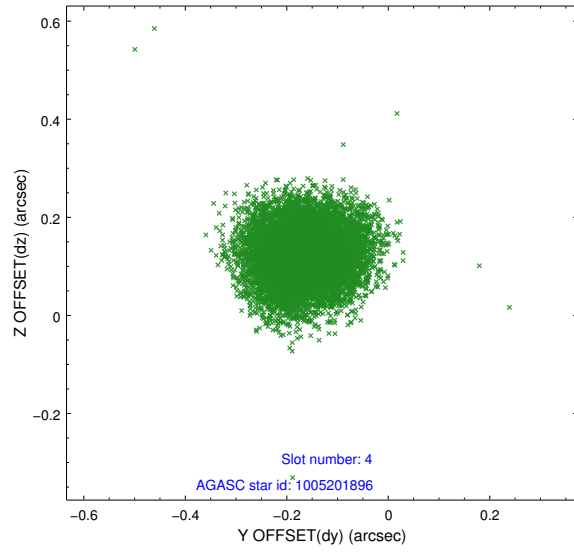
slot	status	id	mag	n_pts	med_dy	med_dz	dr1	dr2	ra	dec	mean_y	mean_z
0	FID	ACIS-I-4	6.93	4557	0.168	0.066	0.012	0.023	0.000000	0.000000	2142.28	1059.39
1	FID	ACIS-I-5	6.99	4555	-0.294	0.045	0.010	0.022	0.000000	0.000000	-1825.87	1057.20
2	FID	ACIS-I-6	7.01	4557	0.027	-0.044	0.015	0.024	0.000000	0.000000	387.47	1701.49
3	GUIDE	1005192328	8.97	9108	-0.043	0.090	0.086	0.138	126.494374	-42.919317	488.48	-1801.23
4	GUIDE	1005201896	8.52	9085	-0.167	0.120	0.084	0.135	126.670468	-42.695868	1395.44	-2003.44
5	GUIDE	1005210304	9.84	9058	-0.137	-0.230	0.144	0.226	125.364534	-42.215893	1976.62	1827.76
6	GUIDE	1005723560	8.45	9110	0.230	0.009	0.086	0.137	126.279097	-43.364629	-1210.12	-1746.86
7	GUIDE	1005724040	7.61	9112	0.108	0.009	0.086	0.158	125.738175	-43.227880	-1176.76	-247.22

## 2.4 Star Slots

### 2.4.1 Slot 3

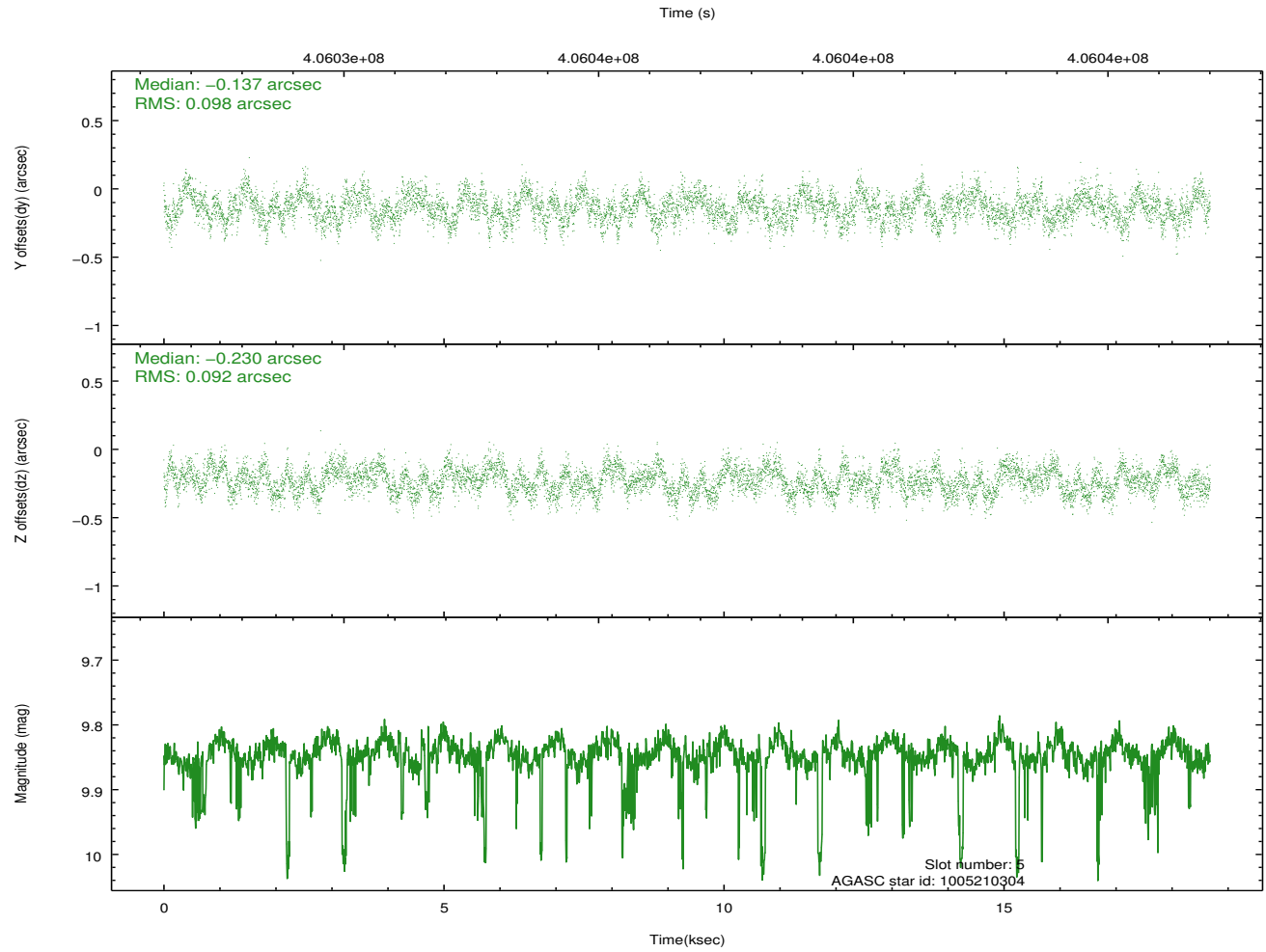
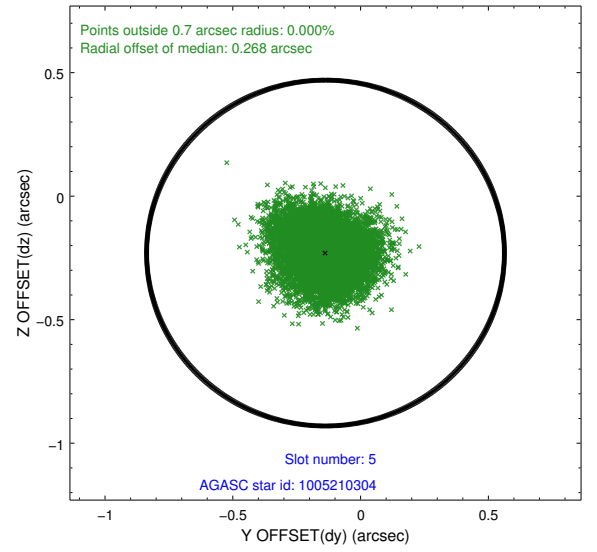
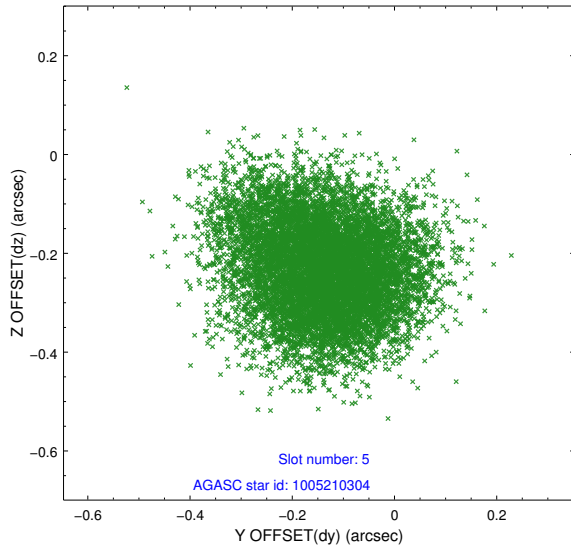


## 2.4.2 Slot 4

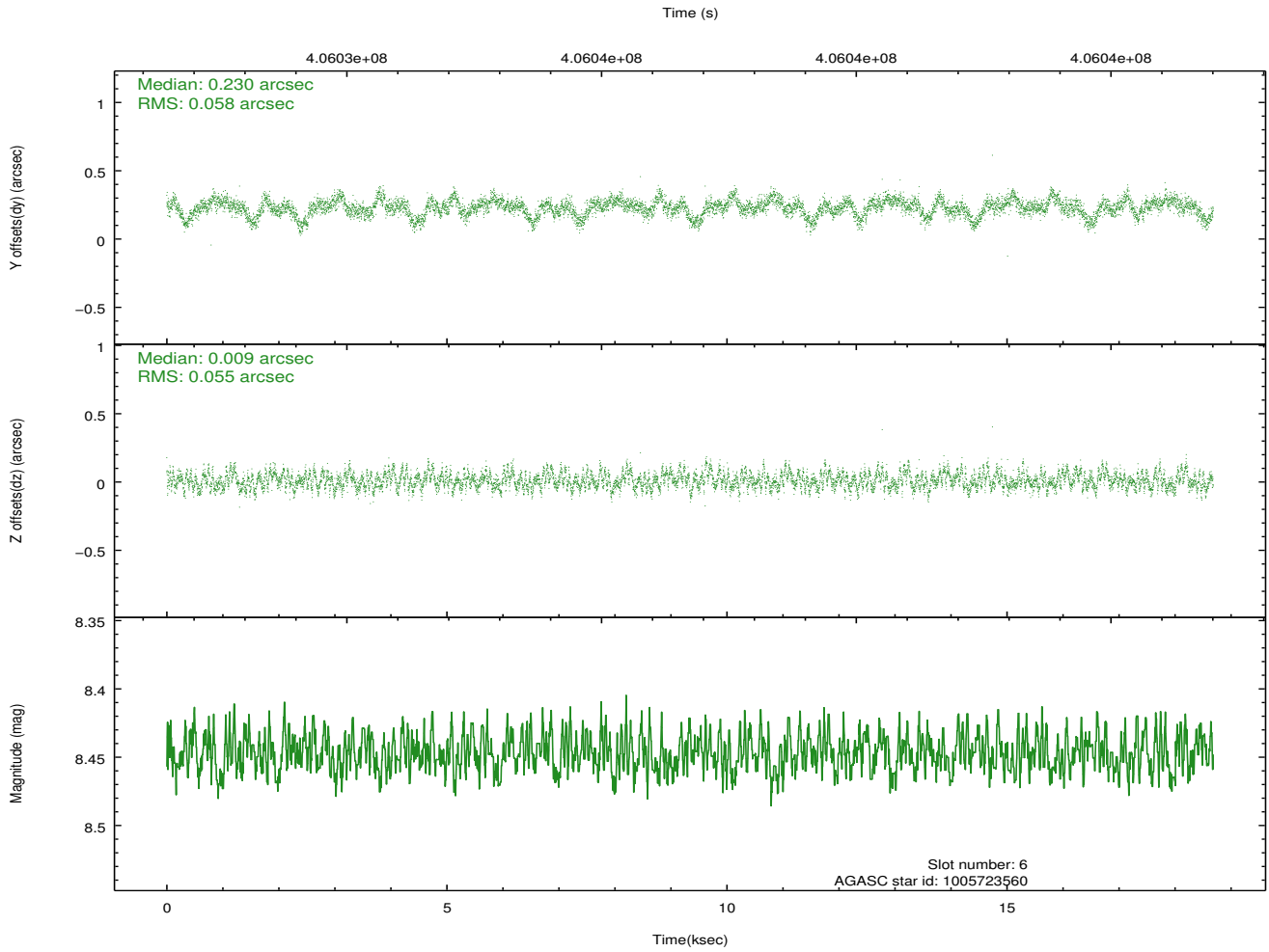
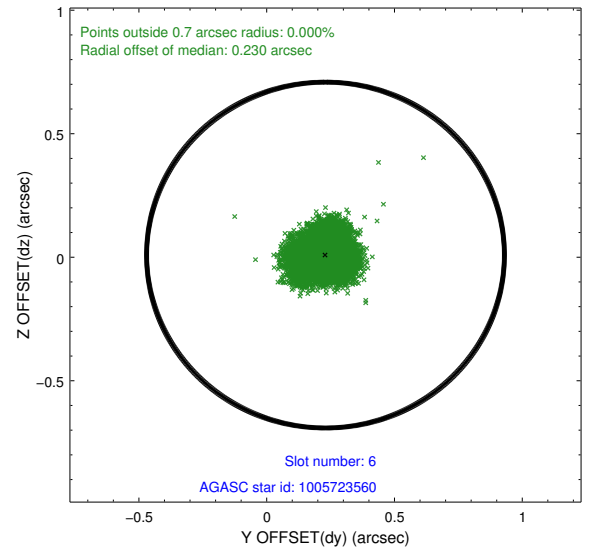
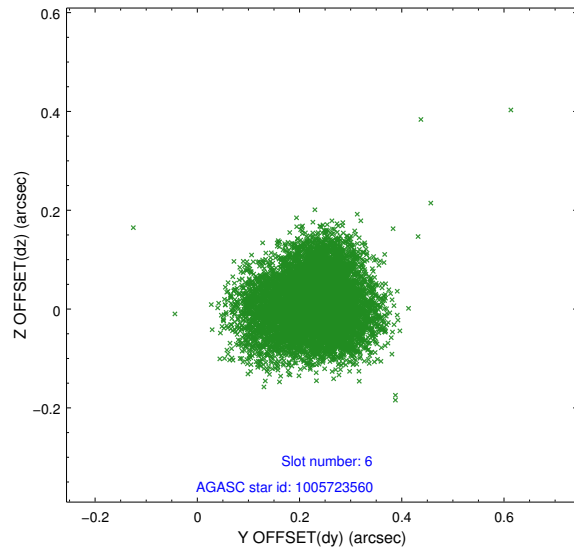




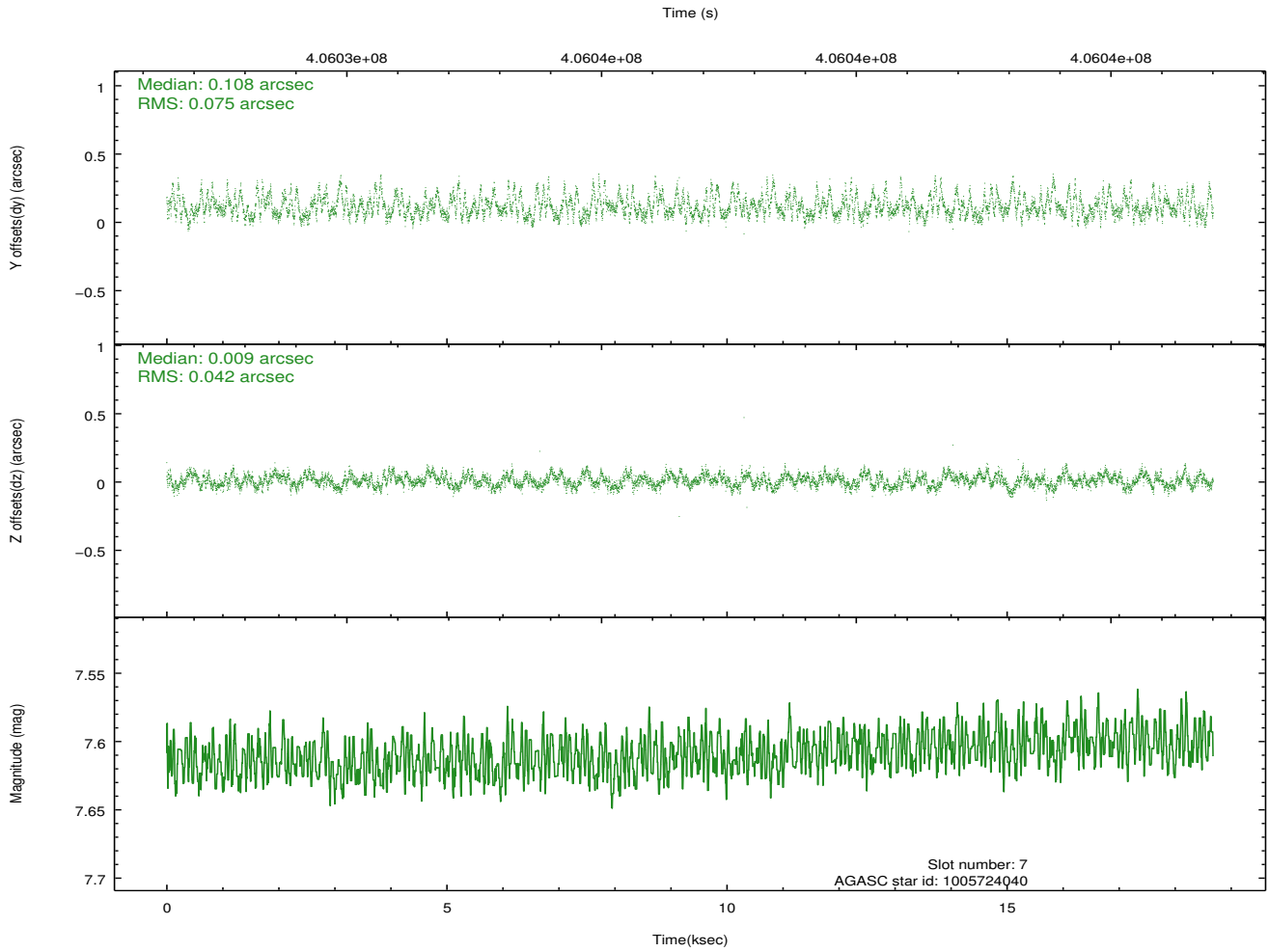
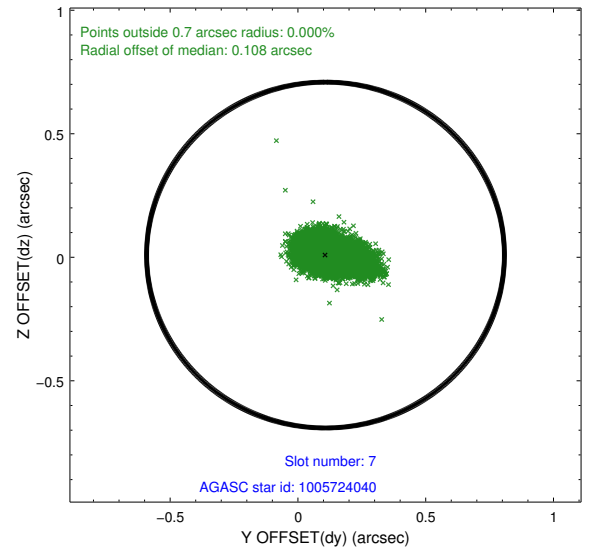
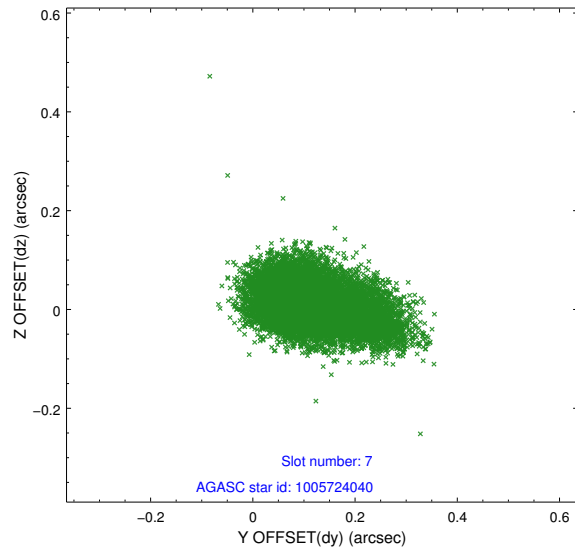
### 2.4.3 Slot 5



## 2.4.4 Slot 6

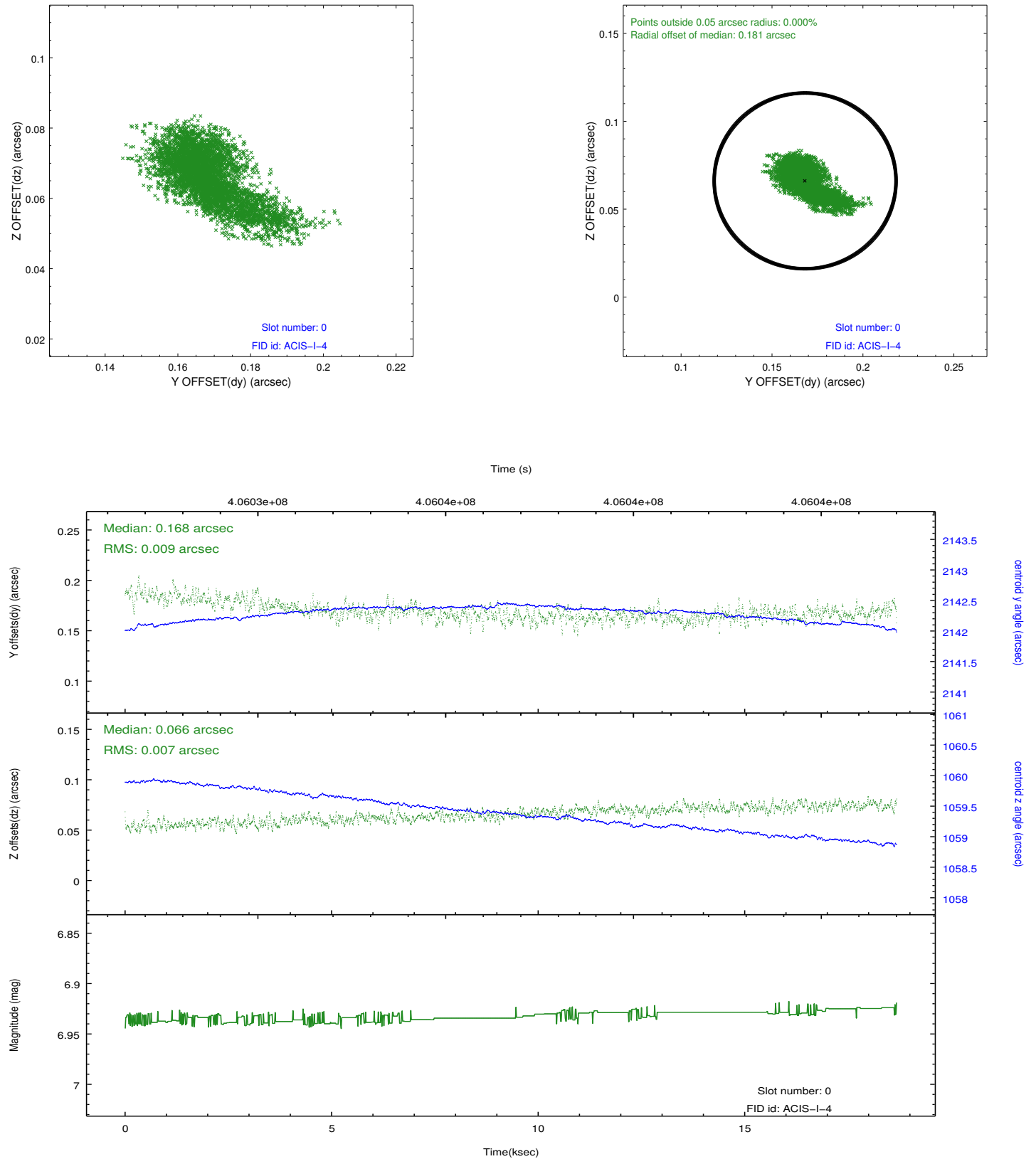


## 2.4.5 Slot 7

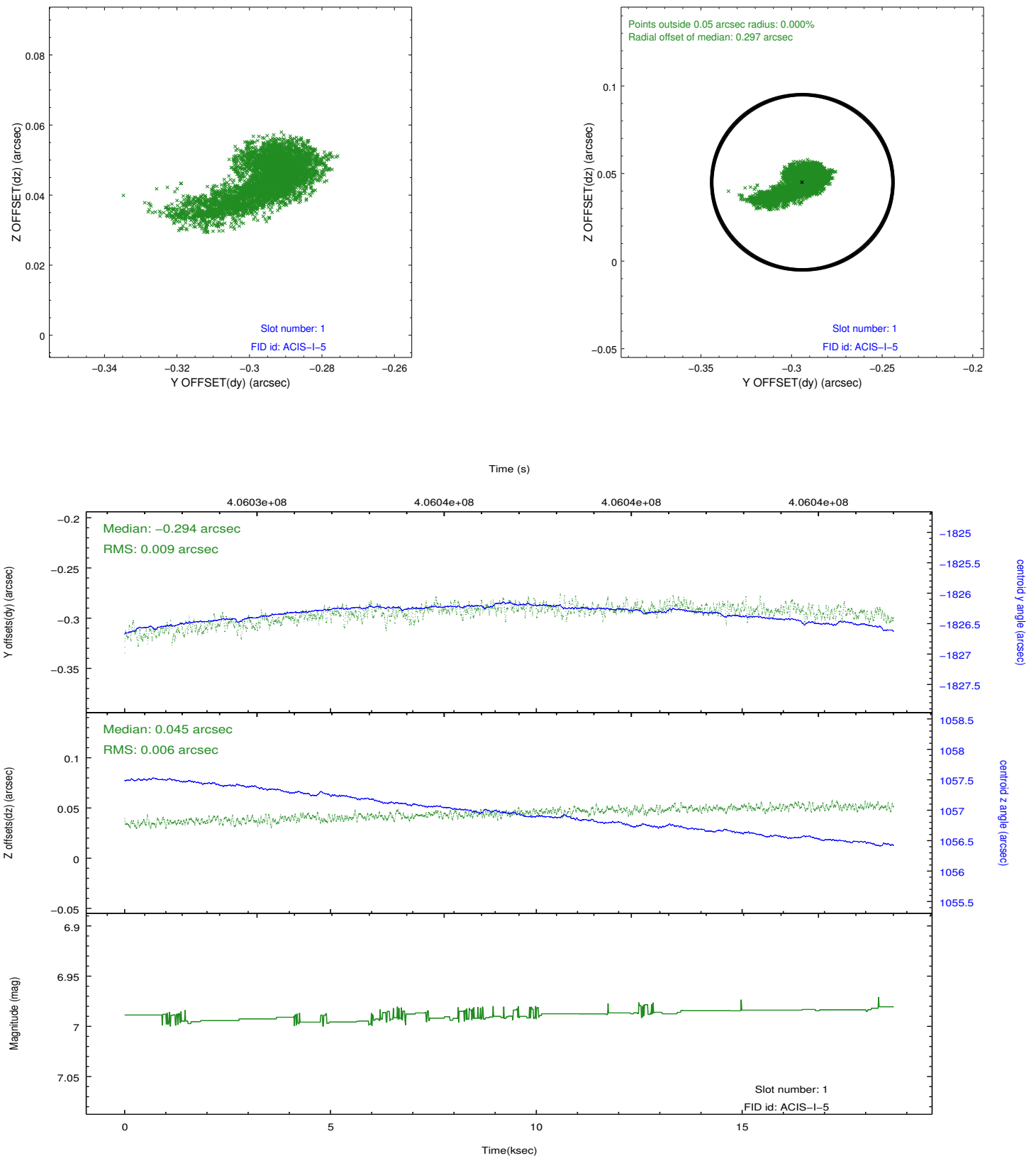


## 2.5 FID Slots

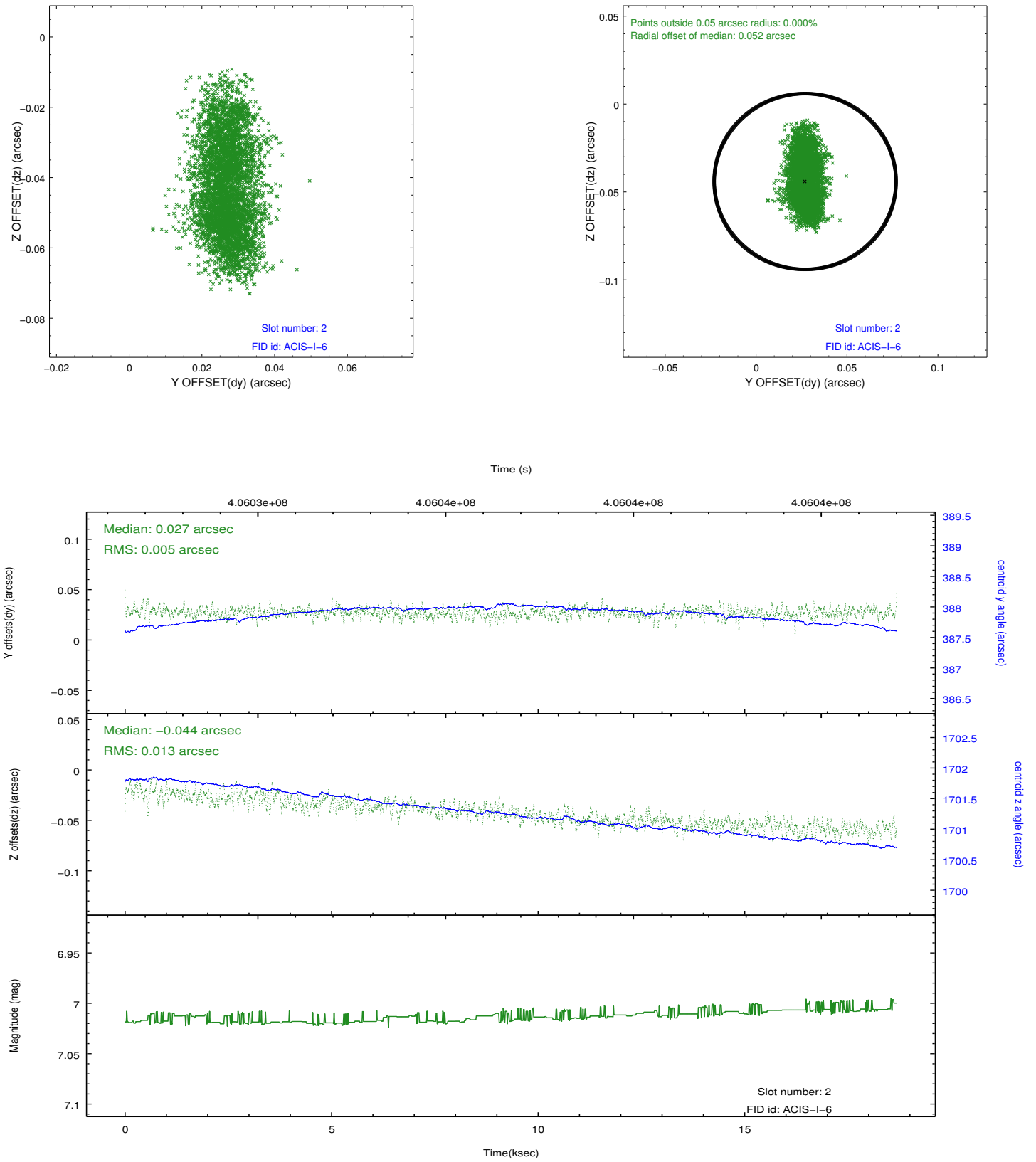
### 2.5.1 Slot 0



## 2.5.2 Slot 1



### 2.5.3 Slot 2



## A Summary

### A.1 Status

V&V Scientist	Jen Lauer
V&V Date (YYYY-MM-DD)	2012.07.16
V&V Edition	1
V&V Disposition and Status	OK
V&V Charge Time	18

### A.2 Comments

ONTIME of 13317.877835631 seconds is less than 85% of expected scheduled time of 18000 seconds. Charge time is set to the scheduled time for this observation, although the ontime is 13318 sec, which is significantly less due to telemetry saturation.