

V&V Reference Report

L2 ASCDS Version : 8.4.5

Observation 11673 - L2 Version 2
Chandra X-Ray Center

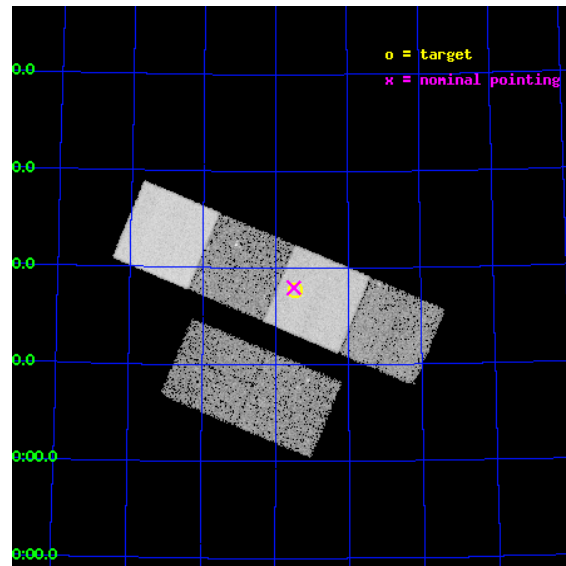
L2 Processing Date : Jun 28 2012

Contents

1	Front	2
2	OBI	3
2.1	OBI	3
2.1.1	Images	3
2.1.2	Bias	3
2.1.3	Parameters	4
2.1.4	Events	4
2.2	Compared Parameters	5
2.3	Aspect	6
2.4	Star Slots	9
2.4.1	Slot 3	9
2.4.2	Slot 4	10
2.4.3	Slot 5	11
2.4.4	Slot 6	12
2.4.5	Slot 7	13
2.5	FID Slots	14
2.5.1	Slot 0	14
2.5.2	Slot 1	15
2.5.3	Slot 2	16
A	Summary	17
A.1	Status	17
A.2	Comments	17

1 Front

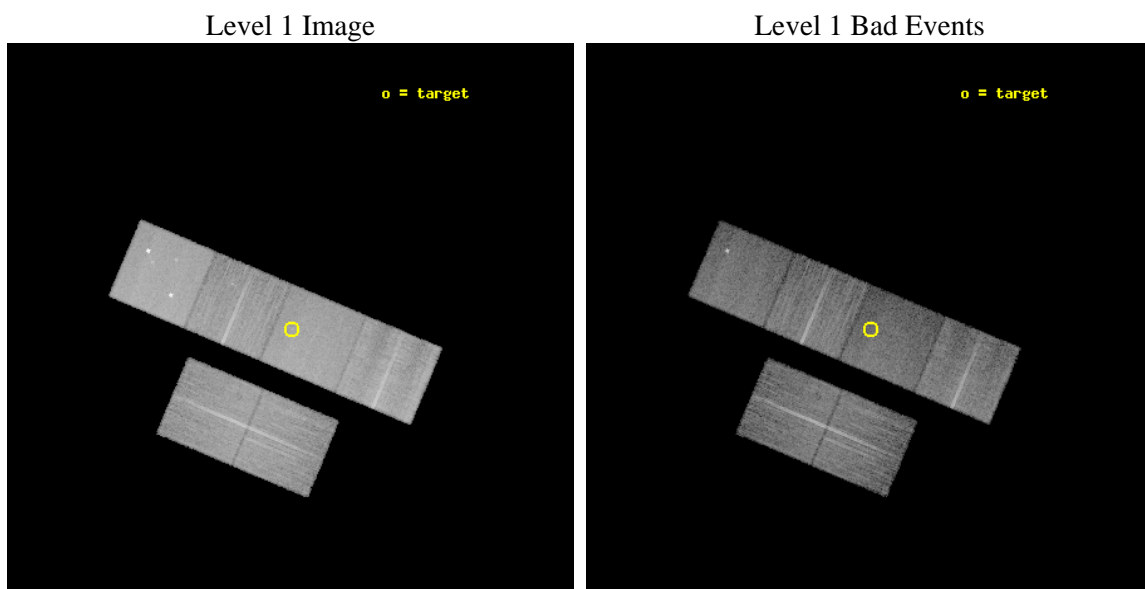
seq_num	702259	Sequence number
obs_id	11673	Observation id
title	Investigating the Nuclear Activity of Barred and Unbarred Spiral Galaxies	Proposal title
observer	Dr Leigh Jenkins	Principal investigator
object	NGC 1530	Source name
dtcycle	0	
cycle	P	events from which exps? Prim/Second/Both
ra_targ	65.862917	Observer's specified target RA [deg]
dec_targ	75.295583	Observer's specified target Dec [deg]
ra_nom	65.873871437227	Nominal RA [deg]
dec_nom	75.299523929788	Nominal Dec [deg]
roll_nom	22.837963062514	Nominal Roll [deg]
revision	2	Processing version of data
ontime	15049.556639194	Sum of GTIs [s]
livetime	14858.990091274	Livetime [s]
ontime2	15049.597679198	Sum of GTIs [s]
ontime3	15042.951578557	Sum of GTIs [s]
ontime5	15049.515599191	Sum of GTIs [s]
ontime6	15049.474559188	Sum of GTIs [s]
ontime7	15049.556639194	Sum of GTIs [s]
ontime8	15049.392479181	Sum of GTIs [s]
l2events	183390	Number of level 2 events



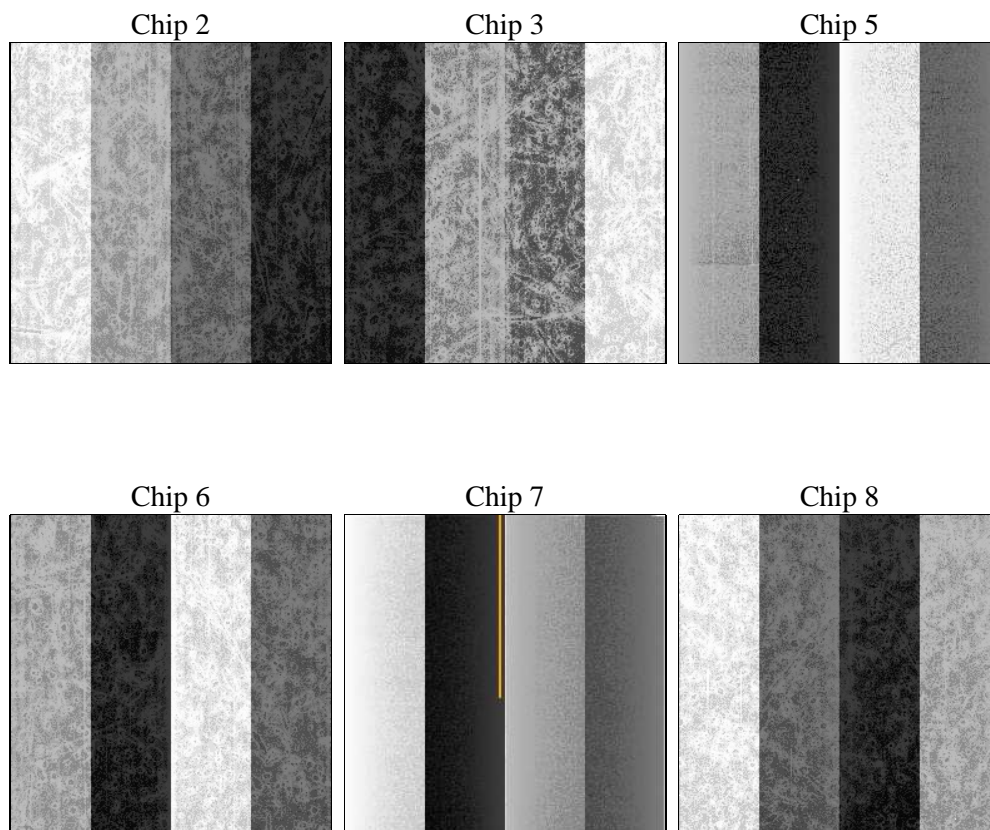
2 OBI

2.1 OBI

2.1.1 Images



2.1.2 Bias



2.1.3 Parameters

obi_num	0	Obi number	sched_exp_time	15000.000000	[s] Scheduled observation exposure time
ascdsver	8.4.5	Processing system revision	ontime	15049.556639194	Sum of GTIs [s]
caldsver	4.5.0	 	ontime2	15049.597679198	Sum of GTIs [s]
date	2012-06-28T20:09:20	Date and time of file creation	ontime3	15042.951578557	Sum of GTIs [s]
revision	2	Processing version of data	ontime5	15049.515599191	Sum of GTIs [s]
			ontime6	15049.474559188	Sum of GTIs [s]
			ontime7	15049.556639194	Sum of GTIs [s]
			ontime8	15049.392479181	Sum of GTIs [s]
			l1events	797731	Number of level 1 events

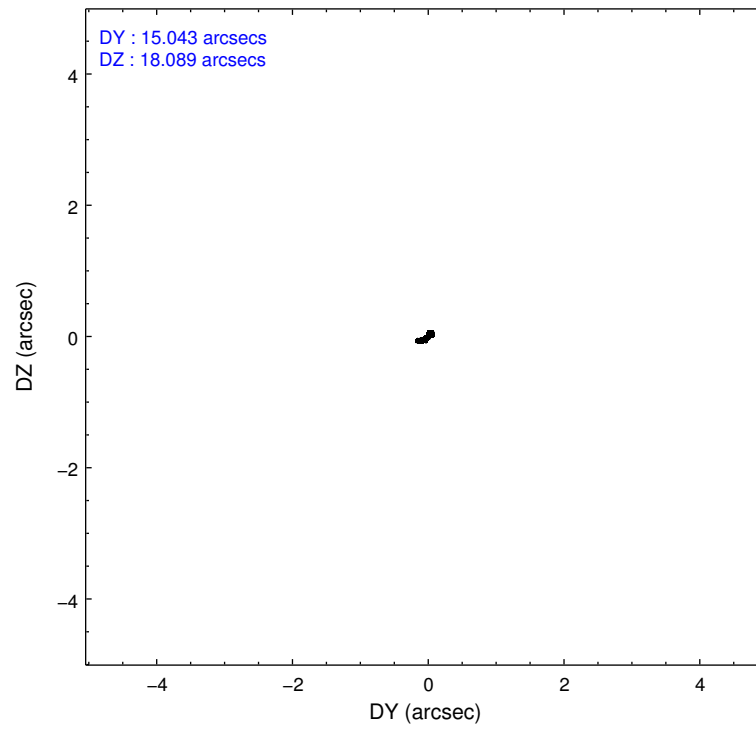
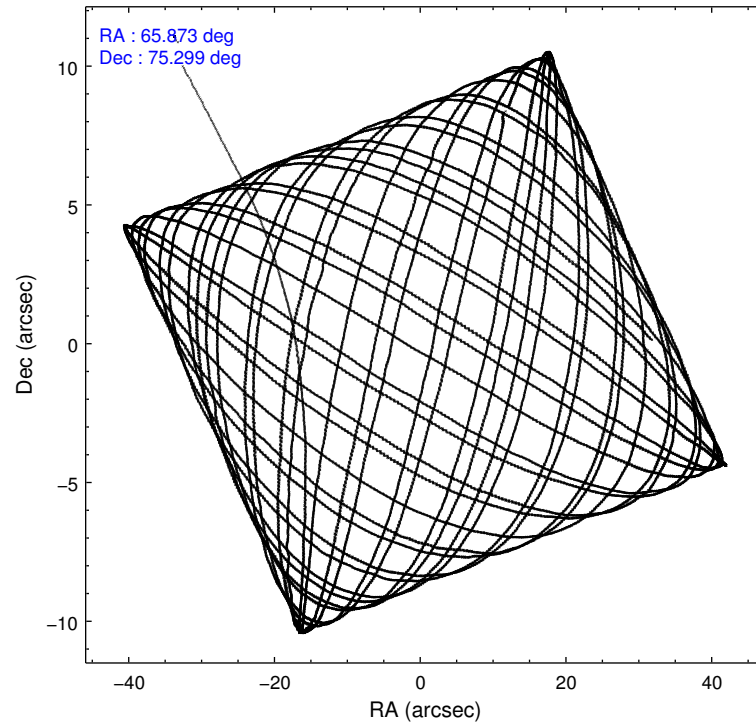
2.1.4 Events

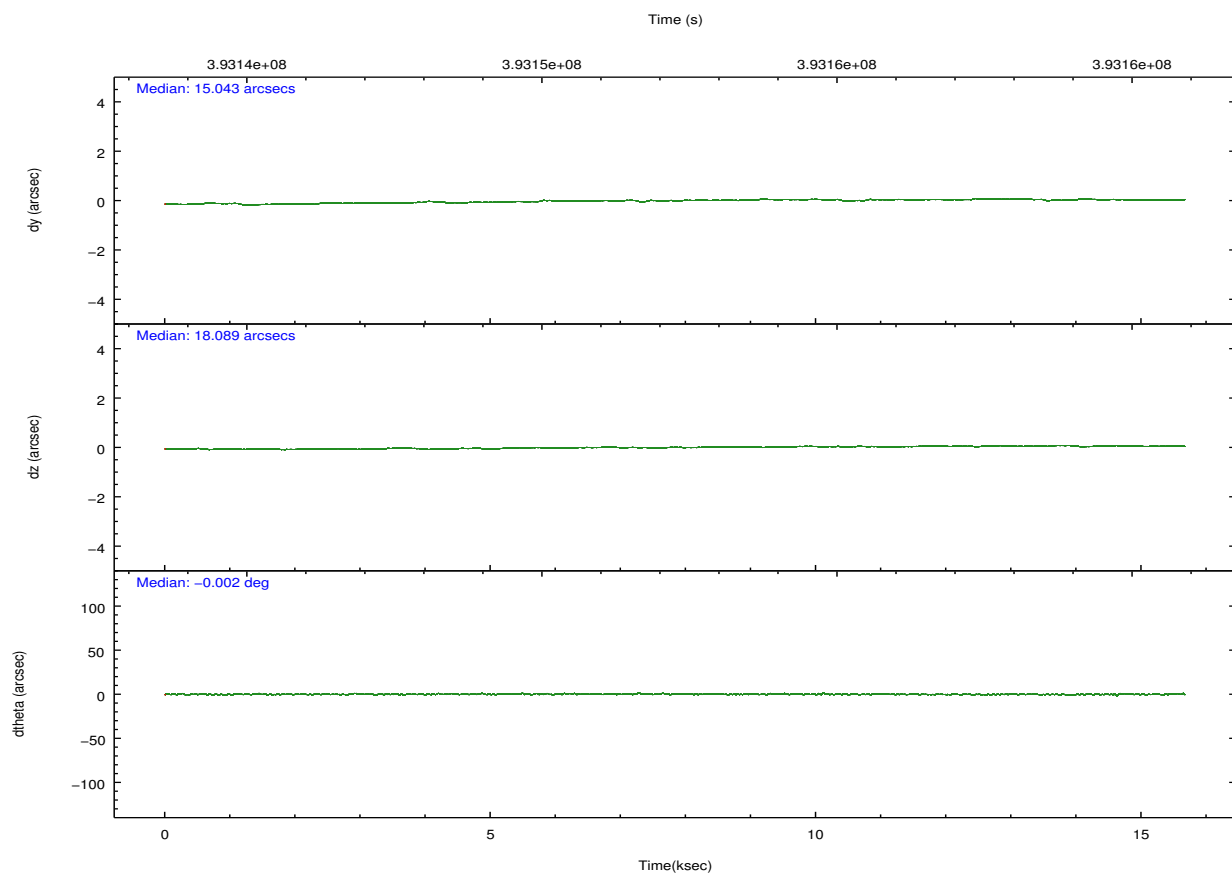
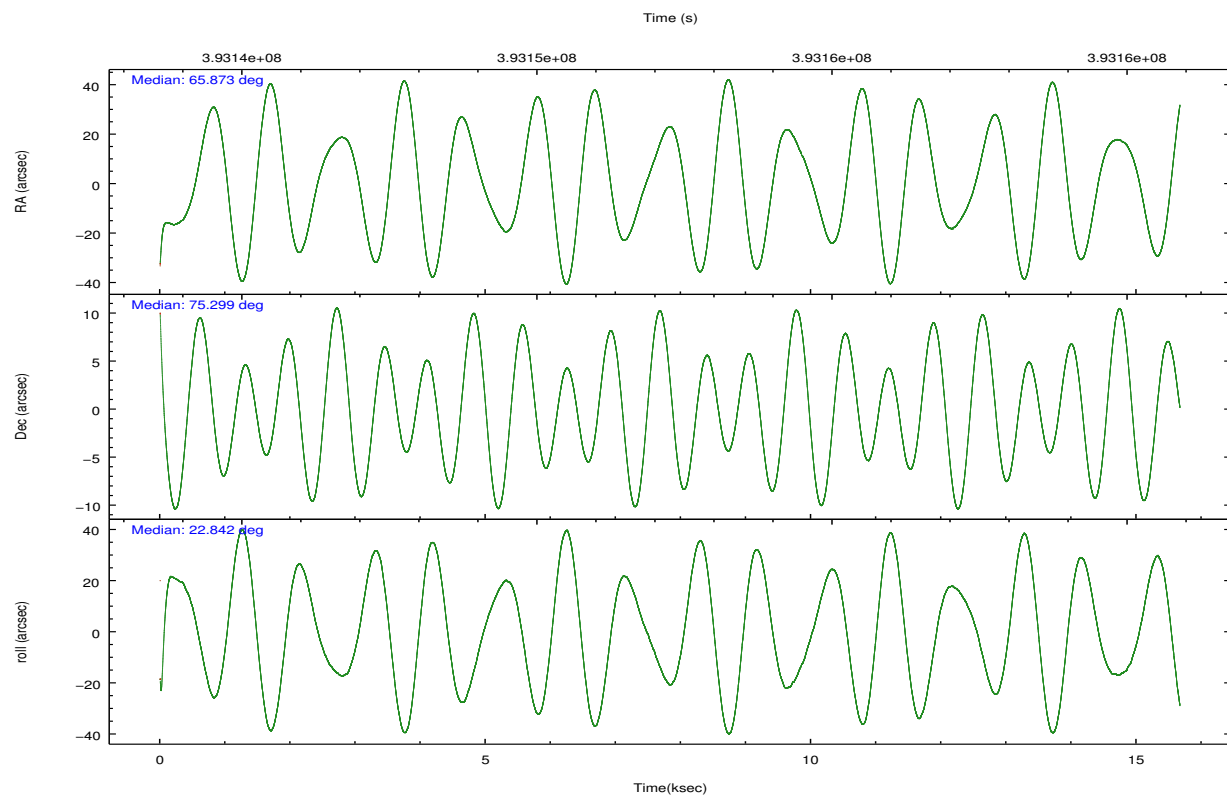
	ccd 2	ccd 3	ccd 5	ccd 6	ccd 7	ccd 8		ccd 2	ccd 3	ccd 5	ccd 6	ccd 7	ccd 8
level 1 events	112634	109070	173484	116948	137695	147900	grade 0 events	4181	4151	10544	4817	5653	12005
rejected events	100661	97634	86171	103684	75326	108597		3%	3%	6%	4%	4%	8%
rejected %	89%	89%	49%	88%	54%	73%	grade 1 events	76	71	1400	75	185	118
								0%	0%	0%	0%	0%	0%
							grade 2 events	3070	2554	26326	3014	12802	9117
								2%	2%	15%	2%	9%	6%
							grade 3 events	1234	1217	3215	1346	5589	4178
								1%	1%	1%	1%	4%	2%
							grade 4 events	1238	1223	3257	1308	5550	3848
								1%	1%	1%	1%	4%	2%
							grade 5 events	4196	4863	13215	5115	14453	7413
								3%	4%	7%	4%	10%	5%
							grade 6 events	2250	2298	44015	2784	32803	10167
								1%	2%	25%	2%	23%	6%
							grade 7 events	96389	92693	71512	98489	60660	101054
								85%	84%	41%	84%	44%	68%

2.2 Compared Parameters

Parameter	Planned	Actual	Parameter	Planned	Actual
Instrument	ACIS	ACIS	Obspar format version number	7	7
Detector	ACIS-235678	ACIS-235678	Obspar file type	PREDICTED	ACTUAL
Grating	NONE	NONE	Obspar update status	NONE	UPDATED
Data mode	FAINT	FAINT	CCD I0 on	N	N
Observation mode	POINTING	POINTING	CCD I1 on	N	N
[deg] Pointing RA	65.810200	65.87387143722697	CCD I2 on	O1	Y
[deg] Pointing Dec	75.277508	75.29952392978819	CCD I3 on	O2	Y
[deg] Pointing Roll	22.742967	22.83796306251363	CCD S0 on	N	N
[mm] SIM focus pos	-0.684267	-0.6828225247311905	CCD S1 on	Y	Y
[mm] SIM defocus	0	0.001444936568705701	CCD S2 on	Y	Y
[mm] SIM translation stage pos	-190.132523	-190.1425803651734	CCD S3 on	Y	Y
[mm] SIM translation stage offset	0	0.01005778216563158	CCD S4 on	Y	Y
[s] Observation start time (MET)	393145091.184000	393143839.84556	CCD S5 on	N	N
Observation start date	2010-06-17T06:57:05	2010-06-17T06:37:19	Number of optional ACIS chips dropped	0	0
[s] Observation end time (MET)	393160091.184000	393161139.28394	On-chip summing requested	N	N
Observation end date	2010-06-17T11:07:05	2010-06-17T11:25:39	Subarray requested	NONE	NONE
Read mode	TIMED	TIMED	Alternating exposures requested	N	N
			[s] Primary exposure time	0.000000	3.2

2.3 Aspect



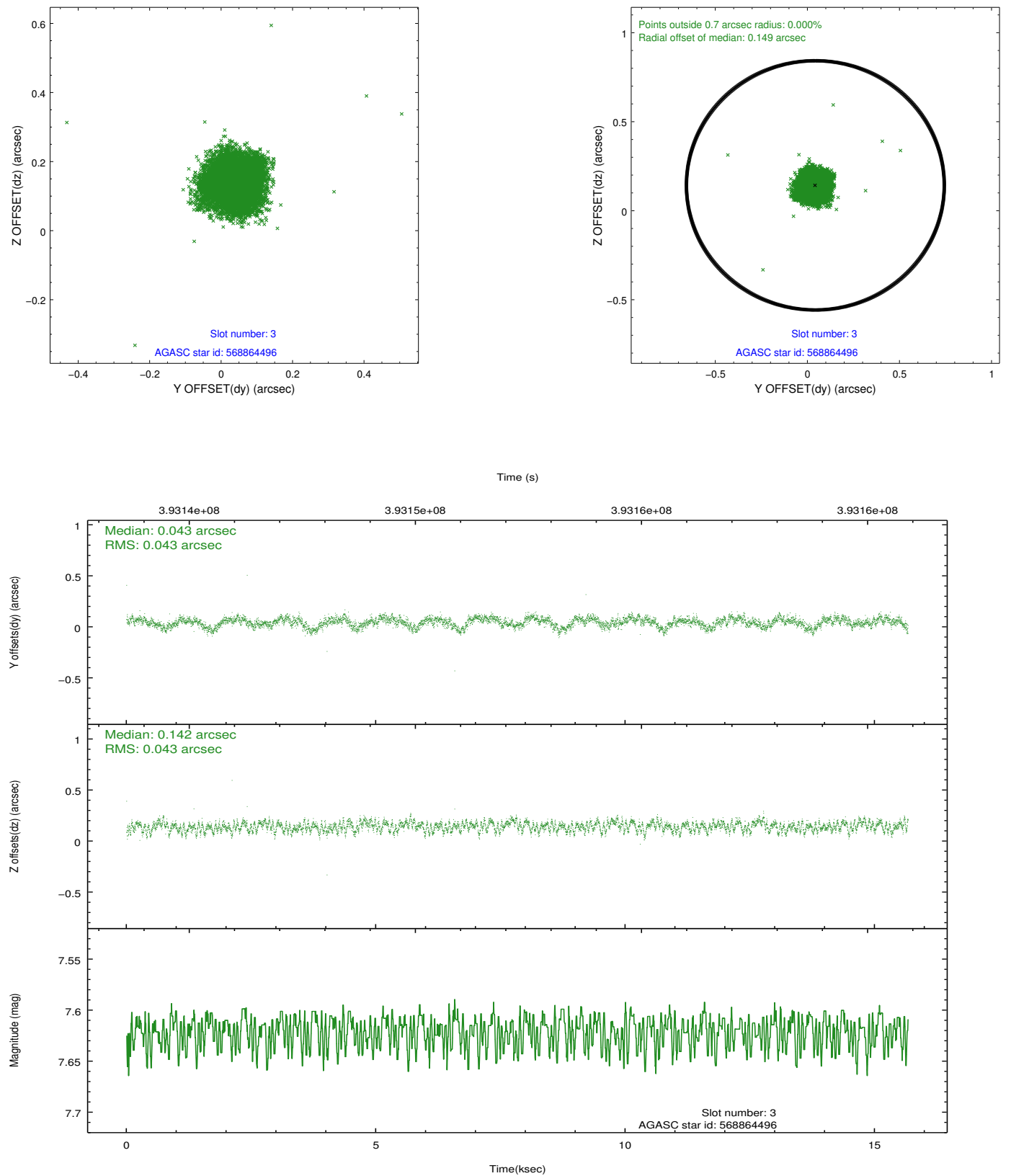


Slot Statistics

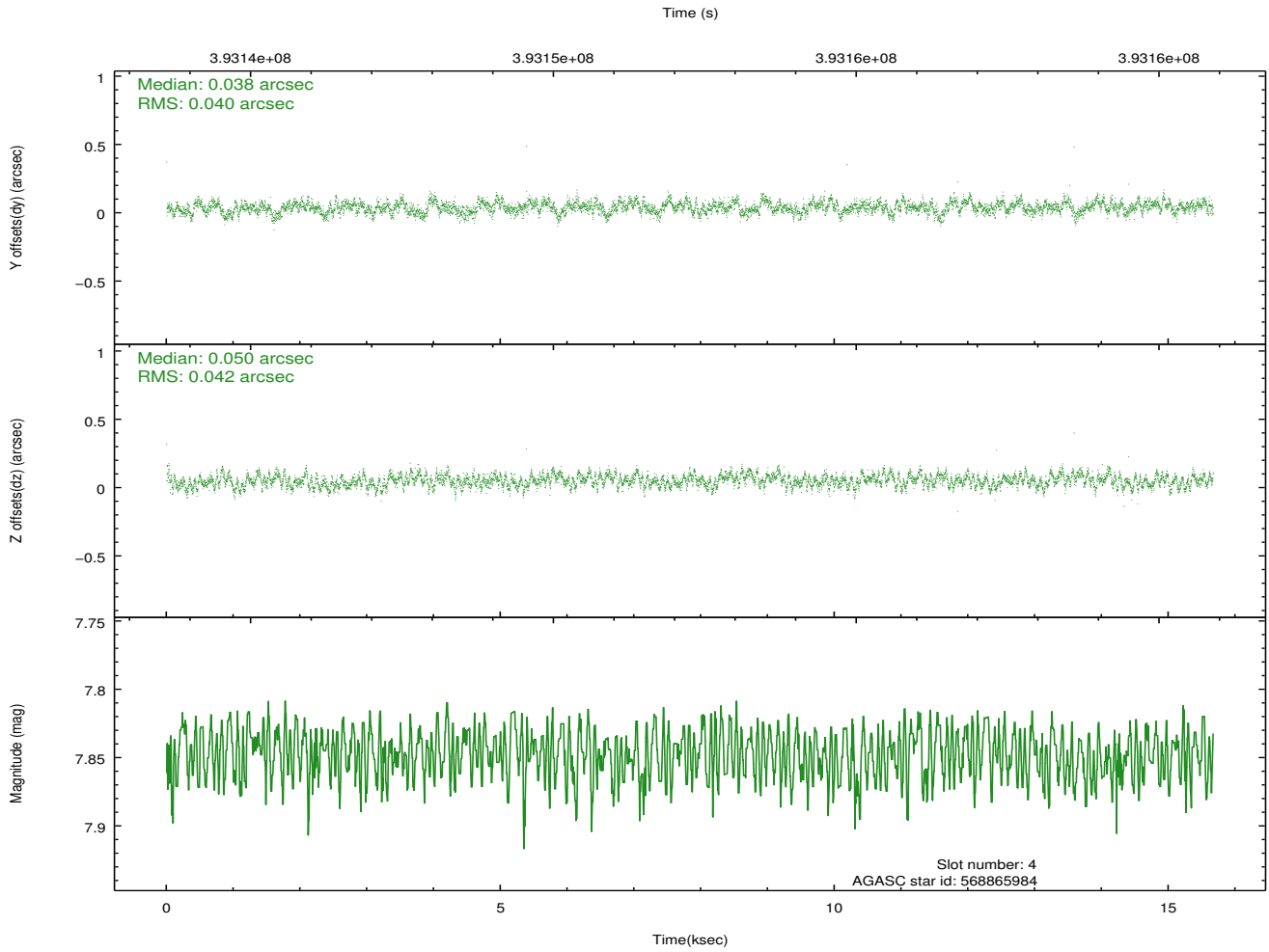
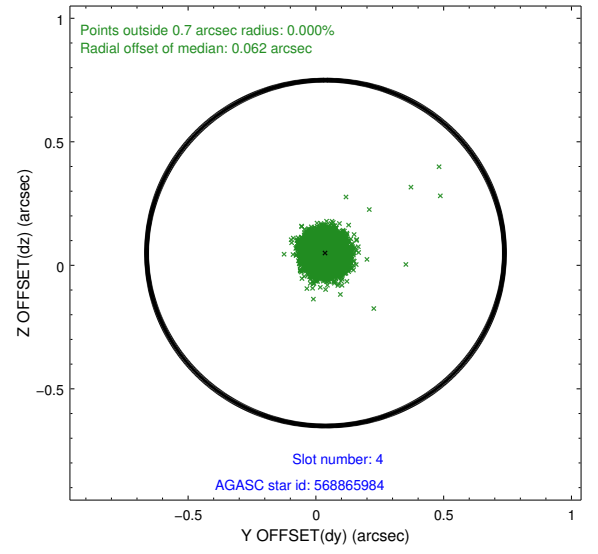
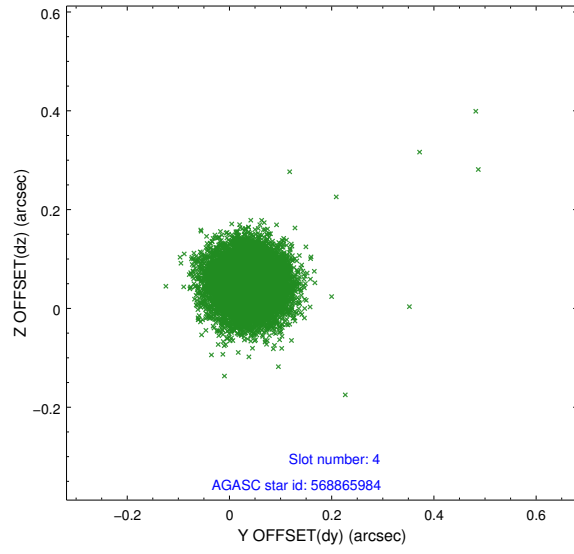
slot	status	id	mag	n_pts	med_dy	med_dz	dr1	dr2	ra	dec	mean_y	mean_z
0	FID	ACIS-S-2	6.88	3821	-0.102	-0.045	0.009	0.019	0.000000	0.000000	-768.16	-1739.51
1	FID	ACIS-S-4	6.97	3822	0.111	0.066	0.008	0.014	0.000000	0.000000	2145.27	168.68
2	FID	ACIS-S-6	7.11	3822	-0.037	-0.013	0.009	0.015	0.000000	0.000000	394.35	806.38
3	GUIDE	568864496	7.62	7644	0.043	0.142	0.064	0.100	65.083794	74.661914	-1492.56	-1772.50
4	GUIDE	568865984	7.85	7644	0.038	0.050	0.063	0.098	64.869375	74.636001	-1717.22	-1776.88
5	GUIDE	591136208	8.92	7641	-0.001	-0.096	0.097	0.151	65.066797	75.218704	-709.33	72.46
6	GUIDE	591154448	9.26	7637	-0.211	-0.149	0.123	0.192	66.134683	75.464996	531.90	509.75
7	GUIDE	568865296	8.46	7638	0.135	0.067	0.083	0.133	64.165417	74.637286	-2328.57	-1498.90

2.4 Star Slots

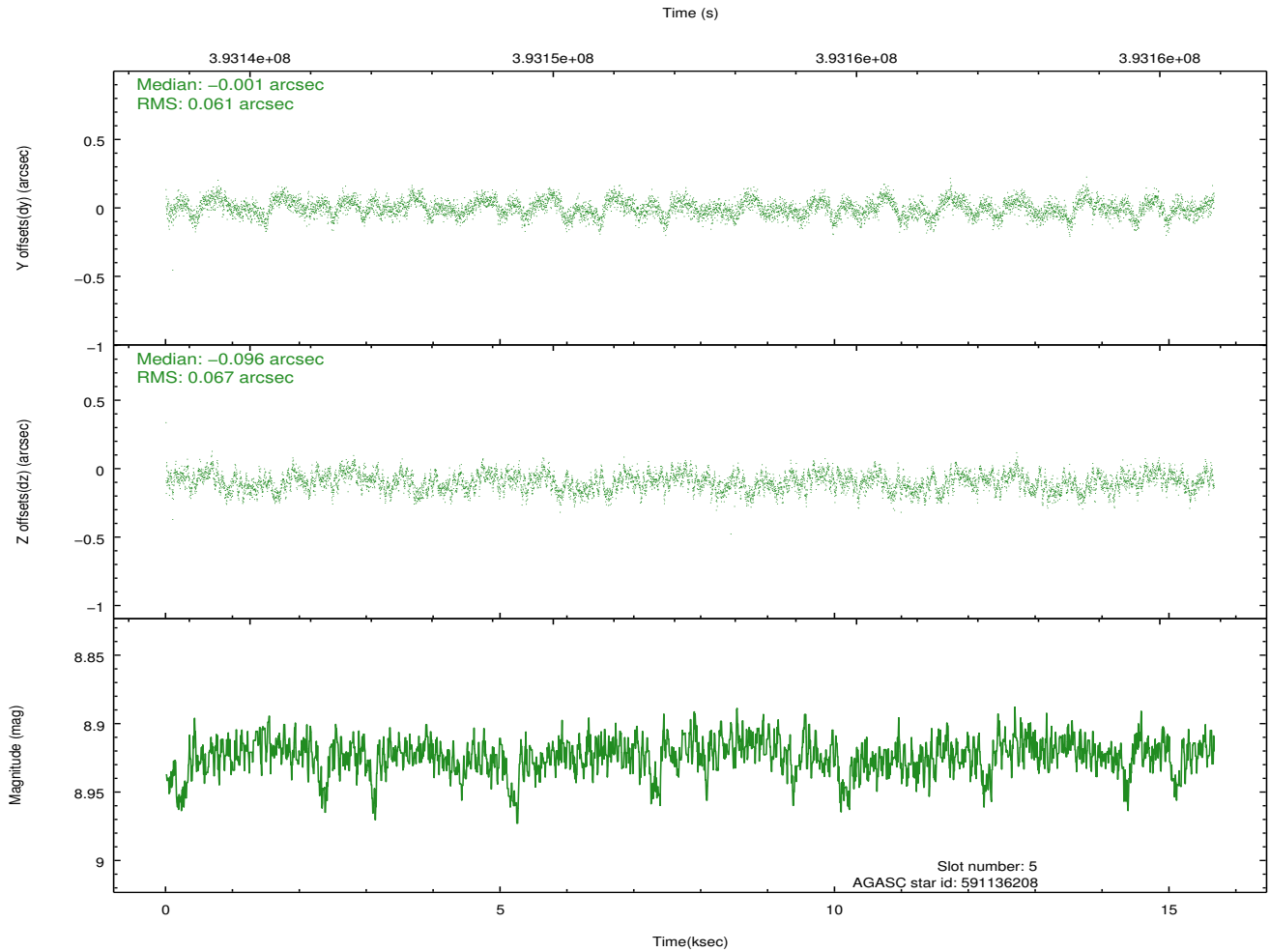
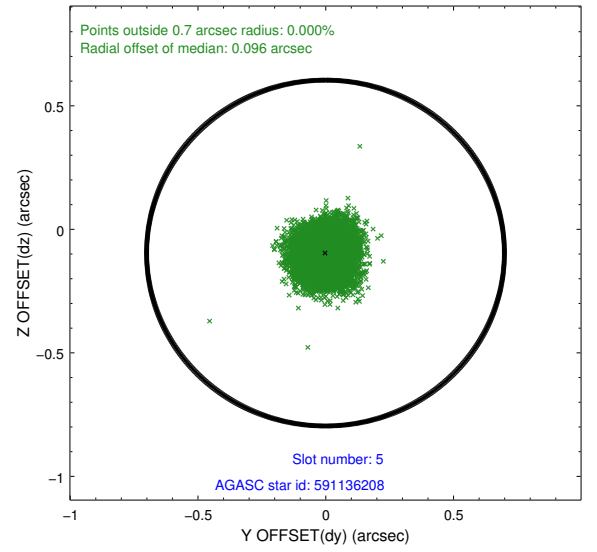
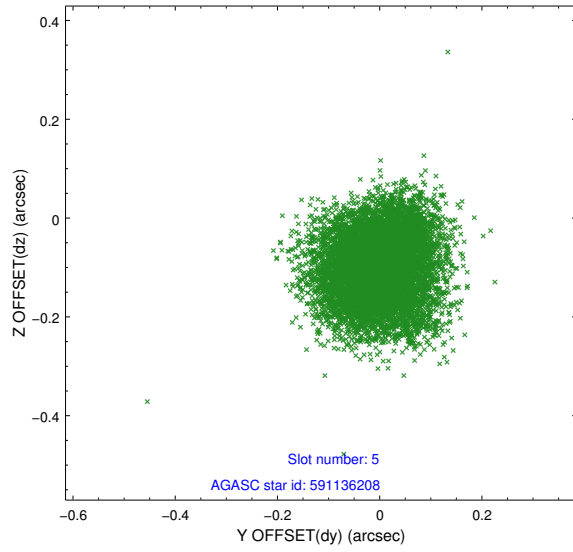
2.4.1 Slot 3



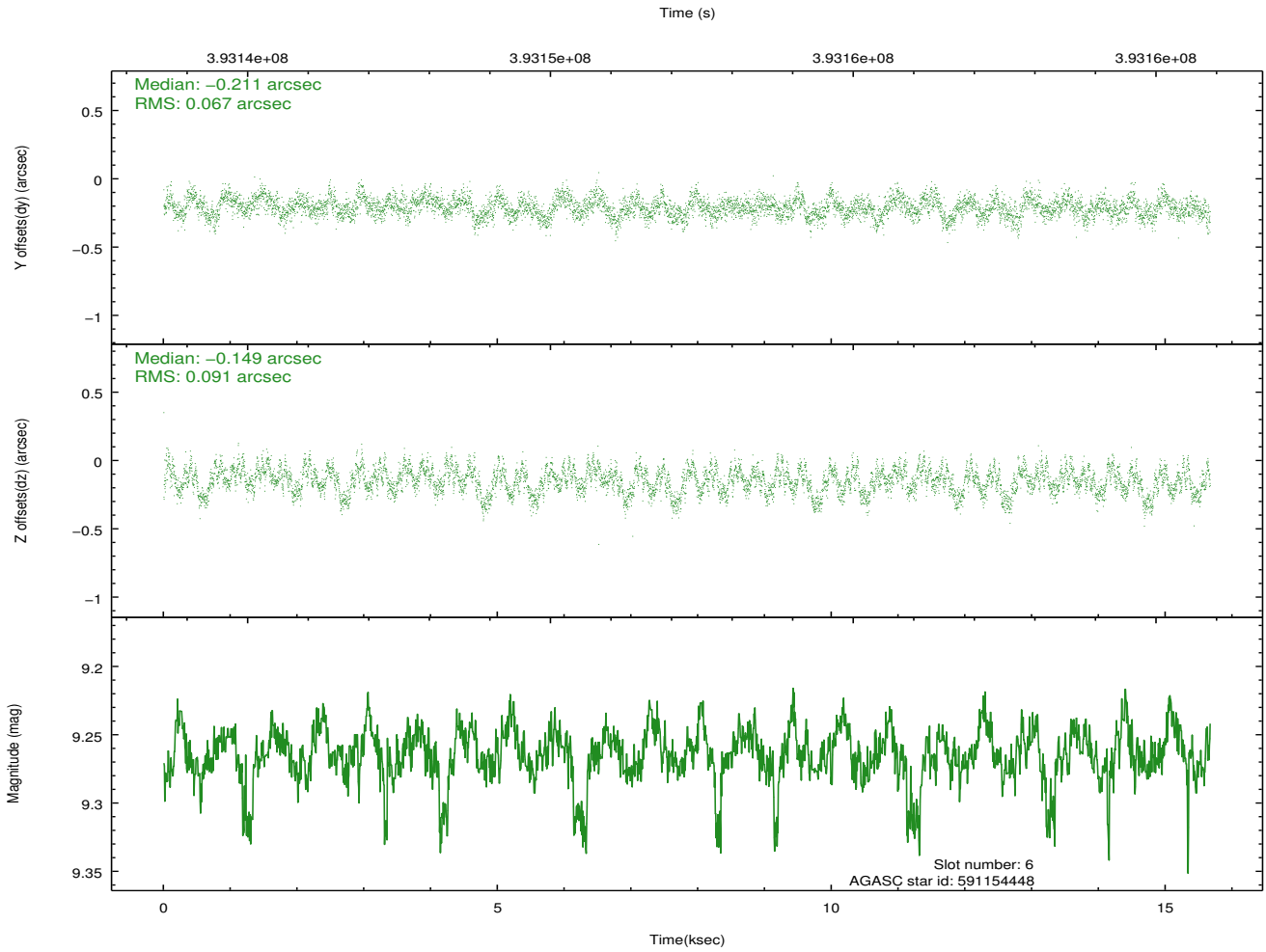
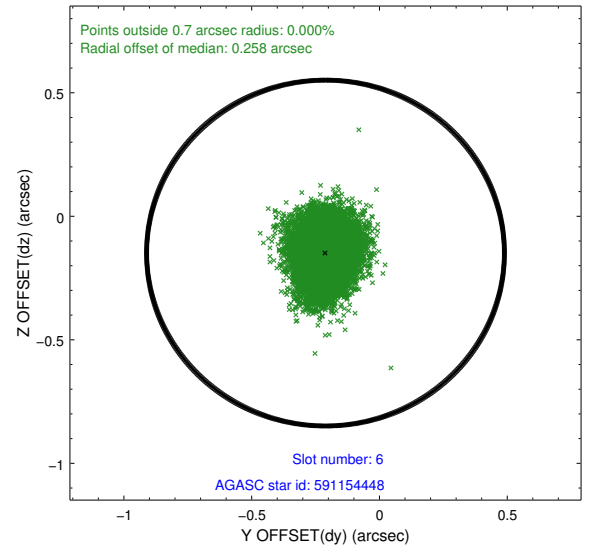
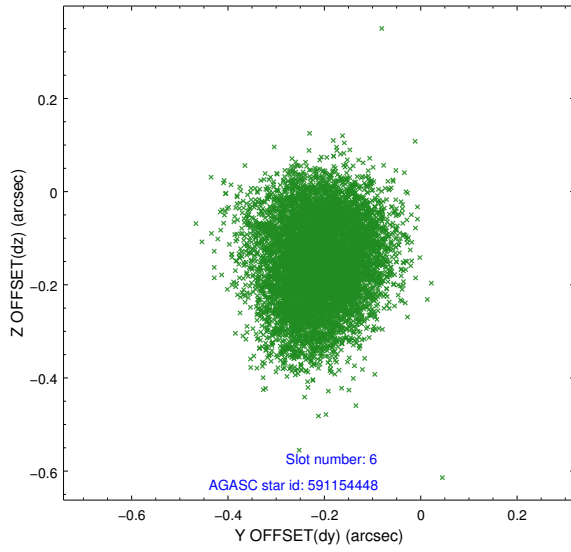
2.4.2 Slot 4



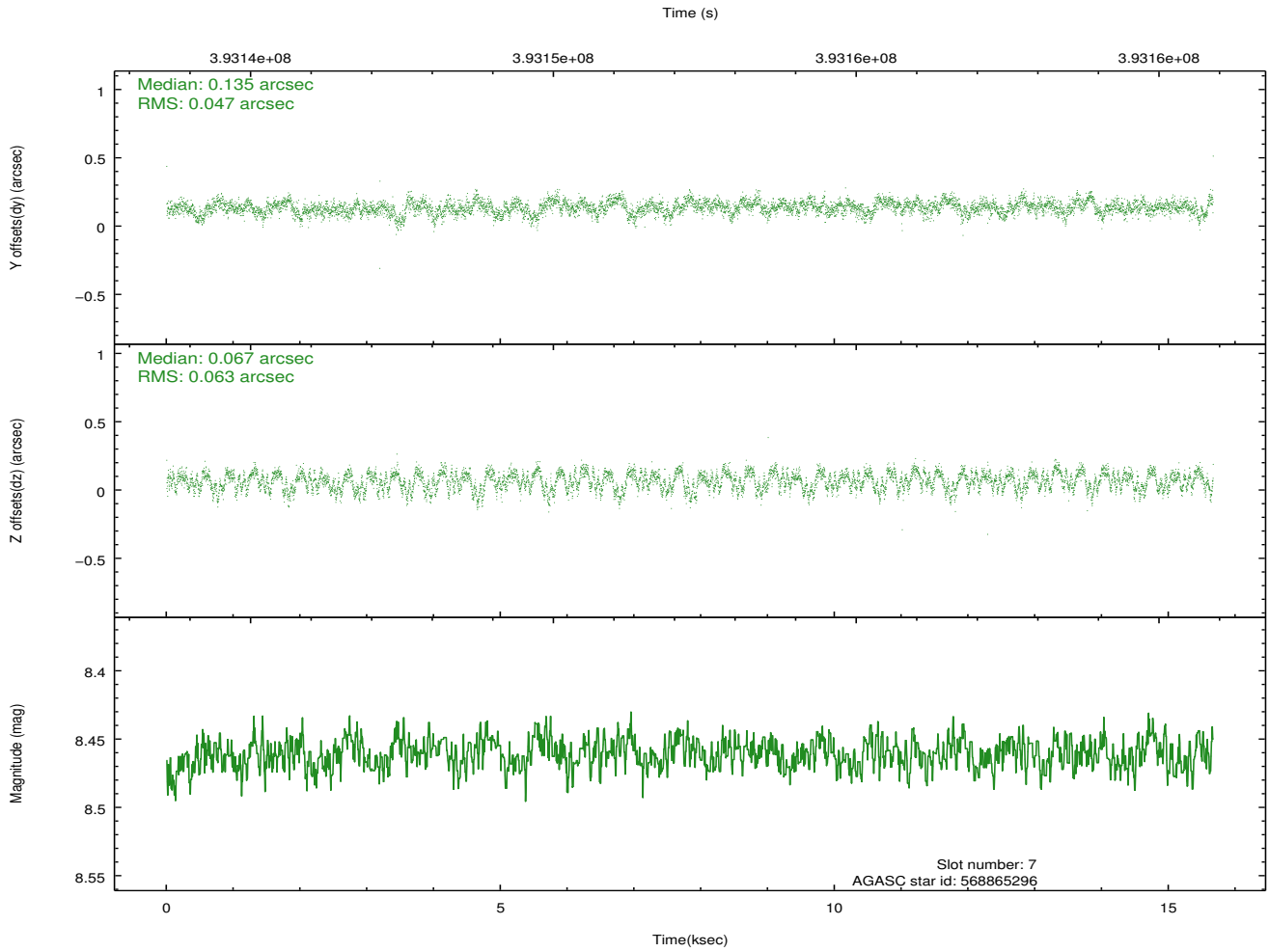
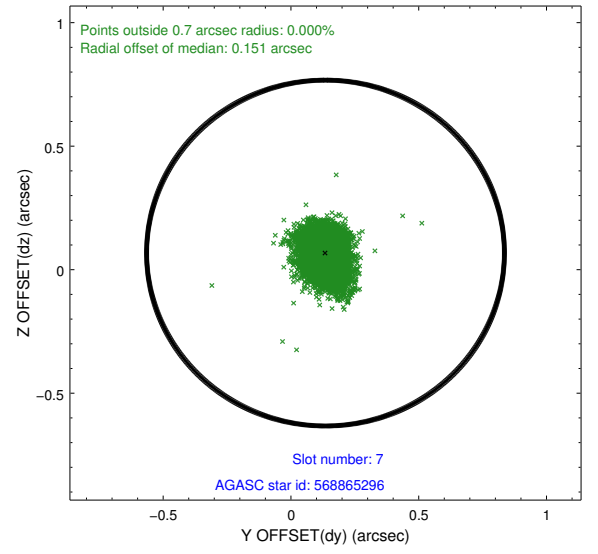
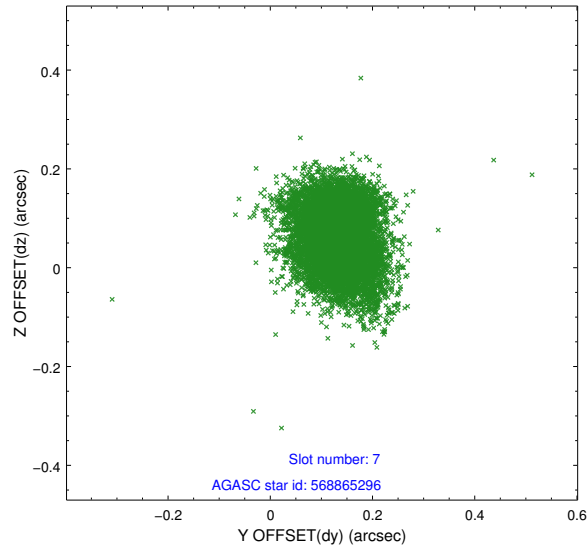
2.4.3 Slot 5



2.4.4 Slot 6

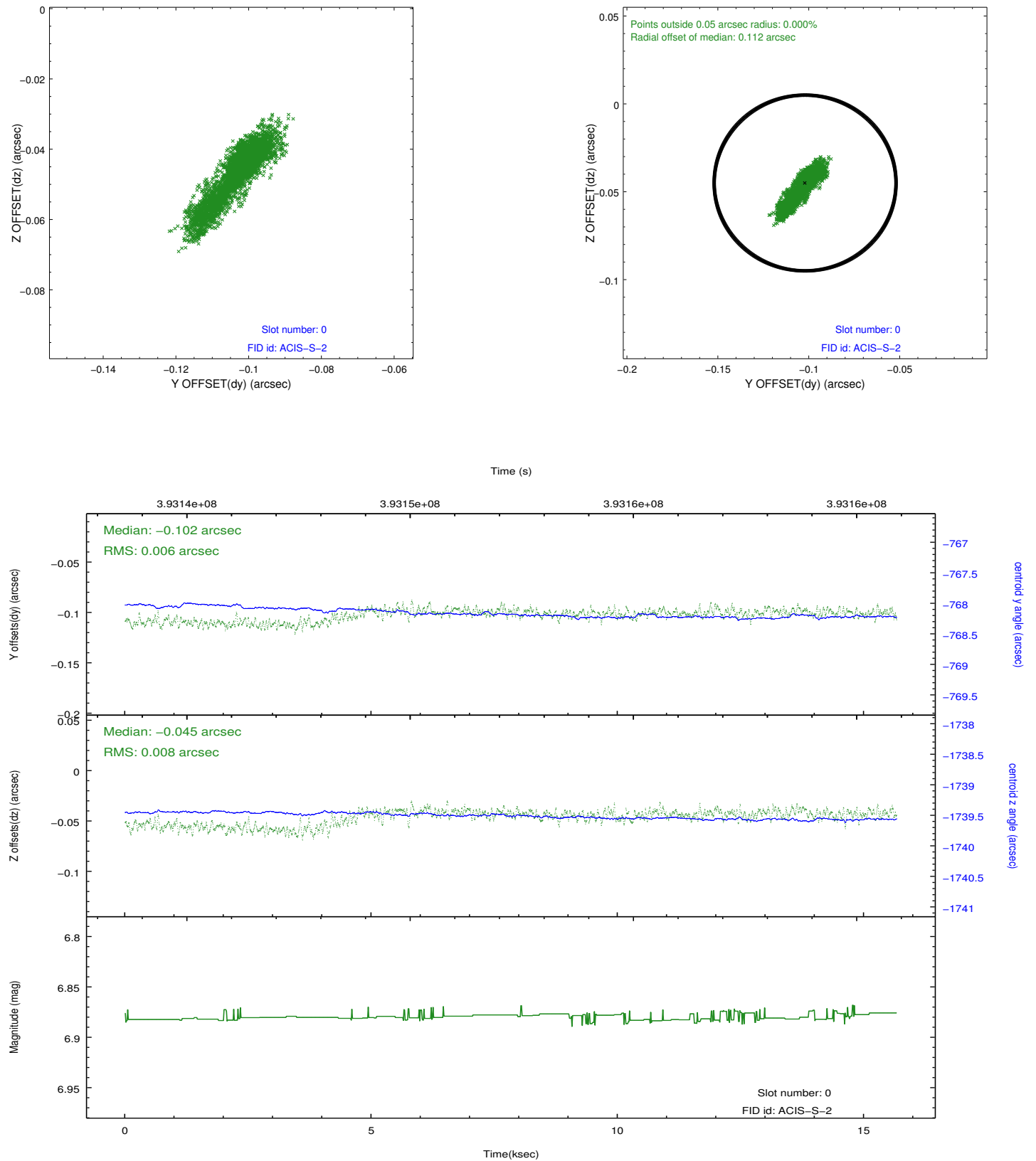


2.4.5 Slot 7

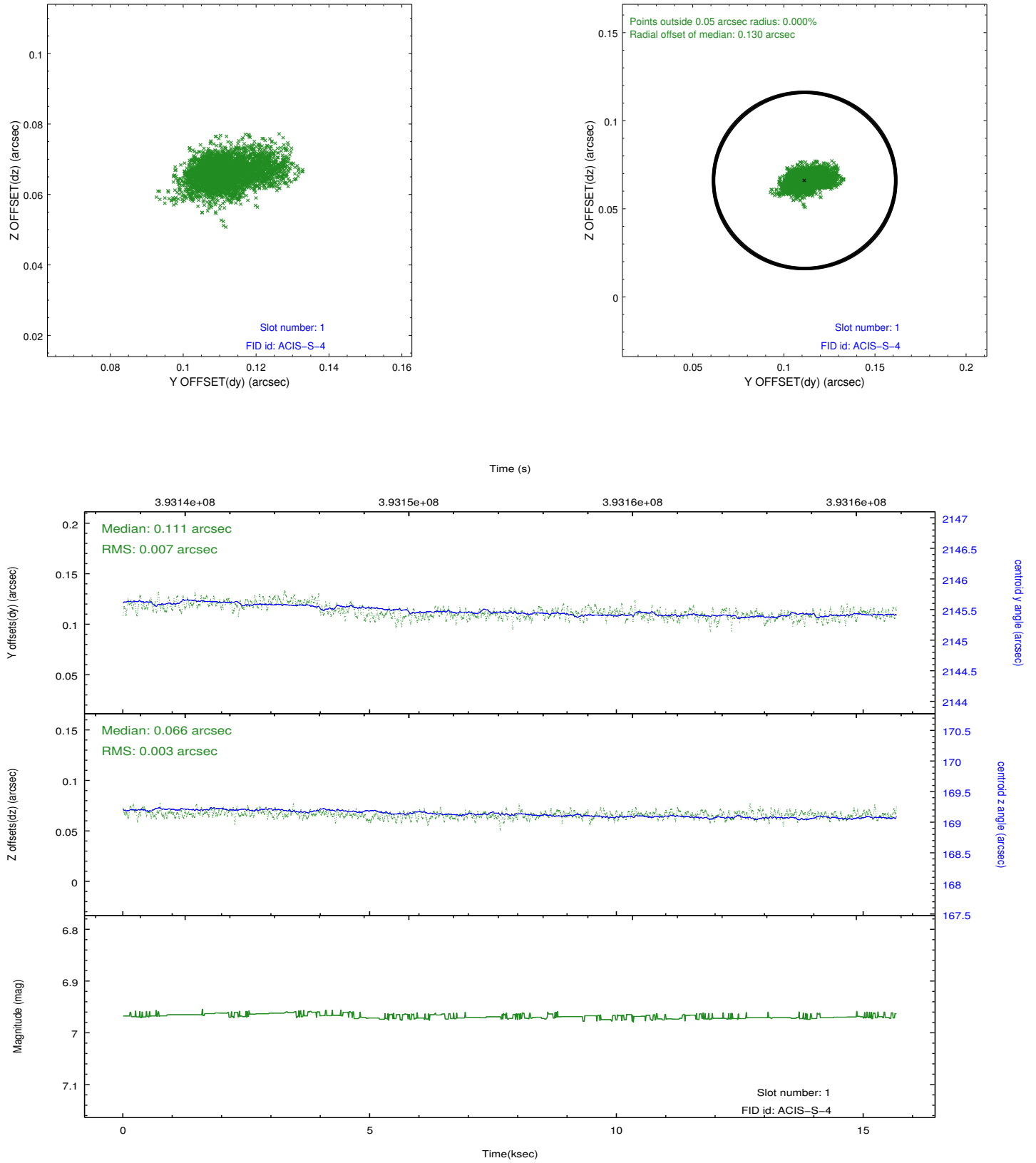


2.5 FID Slots

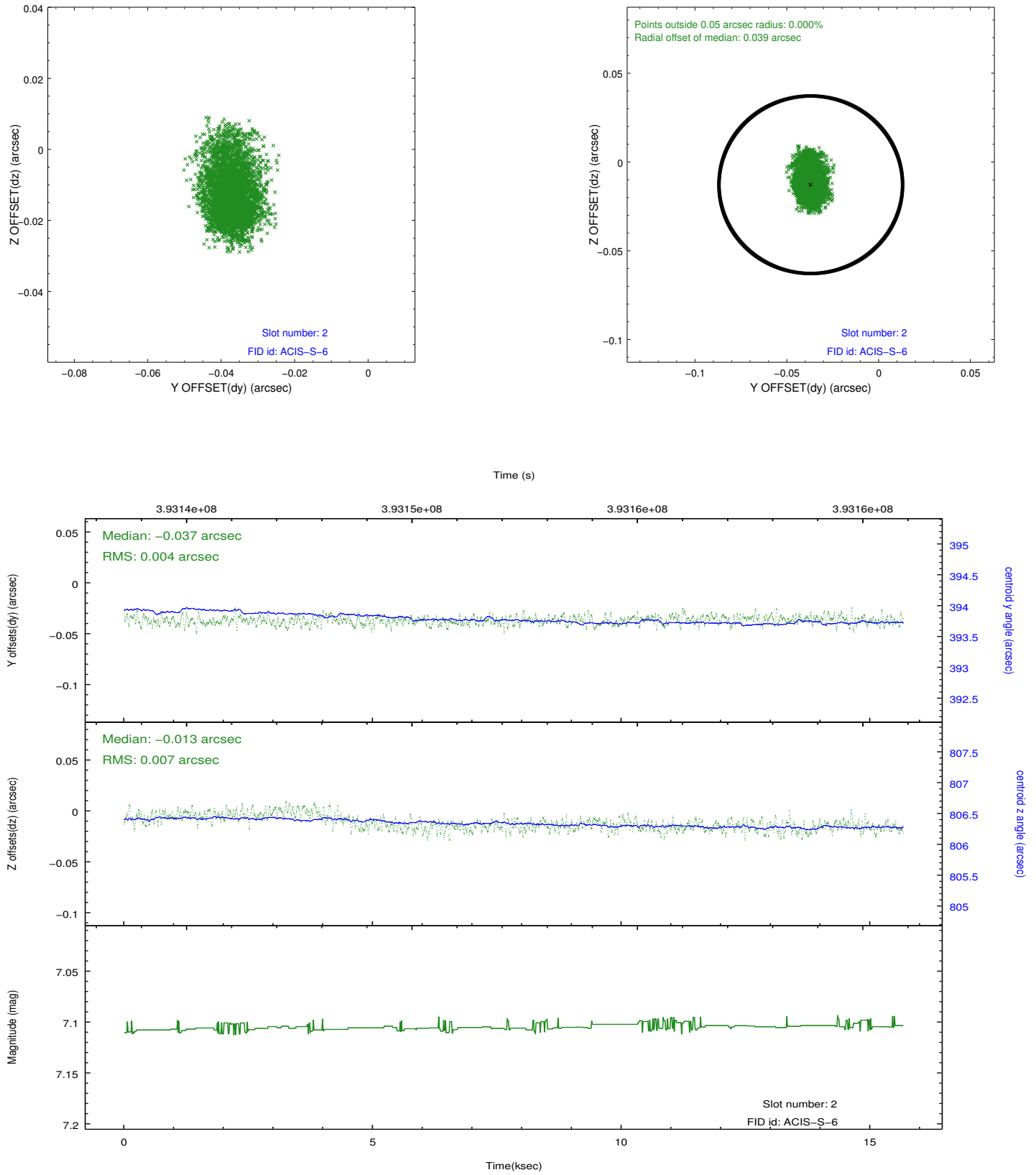
2.5.1 Slot 0



2.5.2 Slot 1



2.5.3 Slot 2



A Summary

A.1 Status

V&V Scientist	Jen Lauer
V&V Date (YYYY-MM-DD)	2012.07.05
V&V Edition	1
V&V Disposition and Status	OK
V&V Charge Time	15.049556634963

A.2 Comments