

V&V Reference Report

L2 ASCDS Version : 8.4.5

Observation 11573 - L2 Version 2
Chandra X-Ray Center

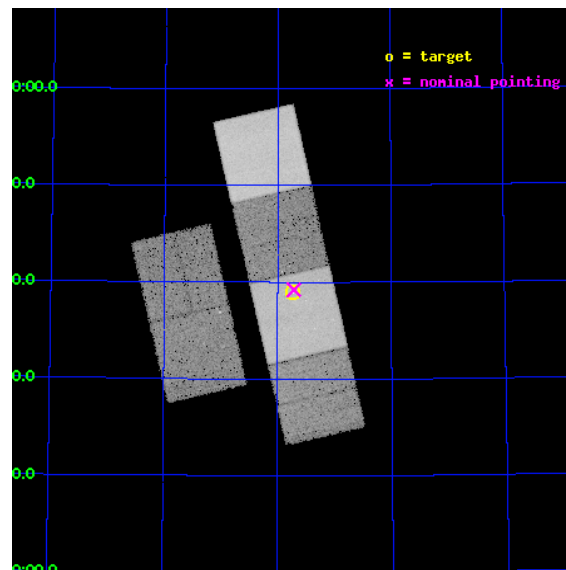
L2 Processing Date : Jun 22 2012

Contents

1	Front	2
2	OBI	3
2.1	OBI	3
2.1.1	Images	3
2.1.2	Bias	3
2.1.3	Parameters	4
2.1.4	Events	4
2.2	Compared Parameters	5
2.3	Aspect	6
2.4	Star Slots	9
2.4.1	Slot 3	9
2.4.2	Slot 4	10
2.4.3	Slot 5	11
2.4.4	Slot 6	12
2.4.5	Slot 7	13
2.5	FID Slots	14
2.5.1	Slot 0	14
2.5.2	Slot 1	15
2.5.3	Slot 2	16
A	Summary	17
A.1	Status	17
A.2	Comments	17

1 Front

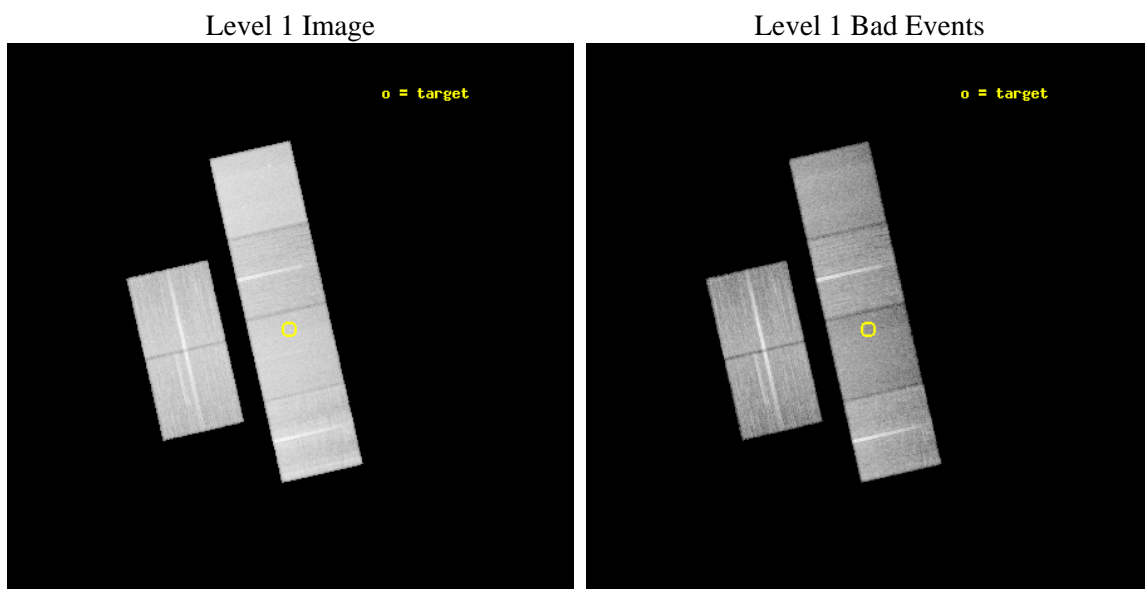
seq_num	702159	Sequence number
obs_id	11573	Observation id
title	The environmental and epoch dependence of radio-loud AGN feedback	
observer	Dr Judith Croston	Principal investigator
object	7C 1731+6638	Source name
dtcycle	0	
cycle	P	events from which exps? Prim/Second/Both
ra_targ	262.9325	Observer's specified target RA [deg]
dec_targ	66.649083	Observer's specified target Dec [deg]
ra_nom	262.92854637822	Nominal RA [deg]
dec_nom	66.65367945049	Nominal Dec [deg]
roll_nom	77.160275925099	Nominal Roll [deg]
revision	2	Processing version of data
ontime	24345.599909365	Sum of GTIs [s]
livetime	24037.321264152	Livetime [s]
ontime2	24345.599909365	Sum of GTIs [s]
ontime3	24345.599909365	Sum of GTIs [s]
ontime5	24345.599909365	Sum of GTIs [s]
ontime6	24345.599909365	Sum of GTIs [s]
ontime7	24345.599909365	Sum of GTIs [s]
ontime8	24342.359008491	Sum of GTIs [s]
l2events	316071	Number of level 2 events



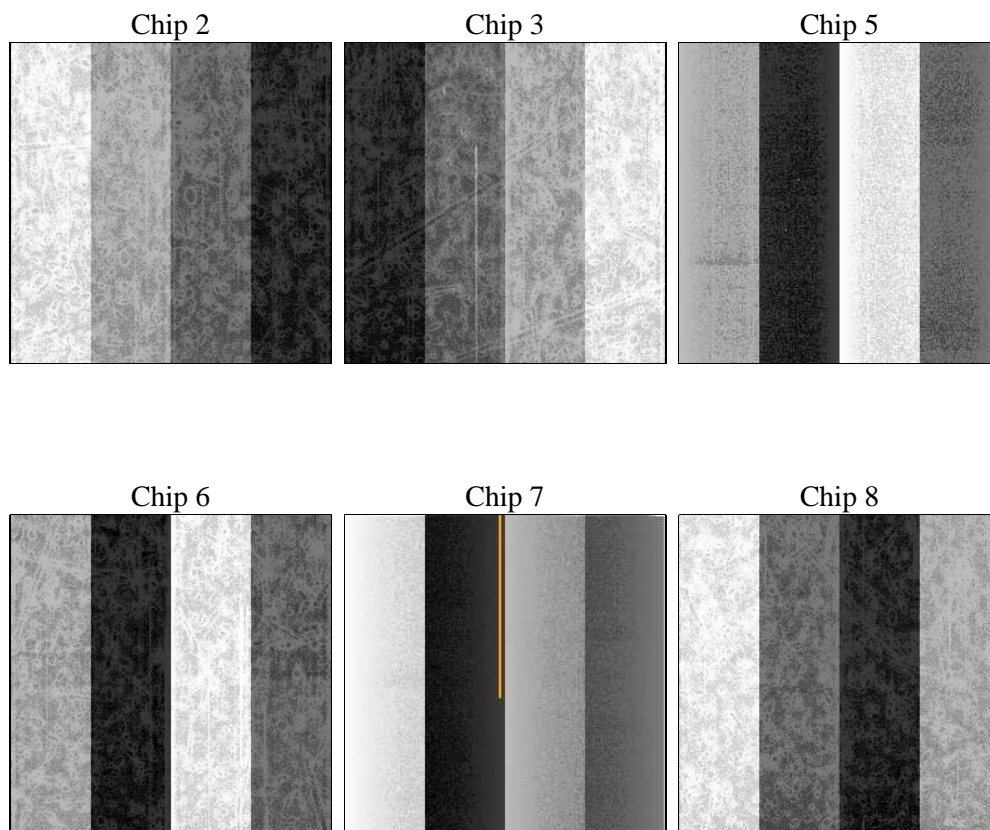
2 OBI

2.1 OBI

2.1.1 Images



2.1.2 Bias



2.1.3 Parameters

obi_num	0	Obi number	sched_exp_time	24301.000000	[s] Scheduled observation exposure time
ascdsver	8.4.5	Processing system revision	ontime	24345.599909365	Sum of GTIs [s]
caldsver	4.4.10	 	ontime2	24345.599909365	Sum of GTIs [s]
date	2012-06-22T04:03:26	Date and time of file creation	ontime3	24345.599909365	Sum of GTIs [s]
revision	2	Processing version of data	ontime5	24345.599909365	Sum of GTIs [s]
			ontime6	24345.599909365	Sum of GTIs [s]
			ontime7	24345.599909365	Sum of GTIs [s]
			ontime8	24342.359008491	Sum of GTIs [s]
			l1events	1378241	Number of level 1 events

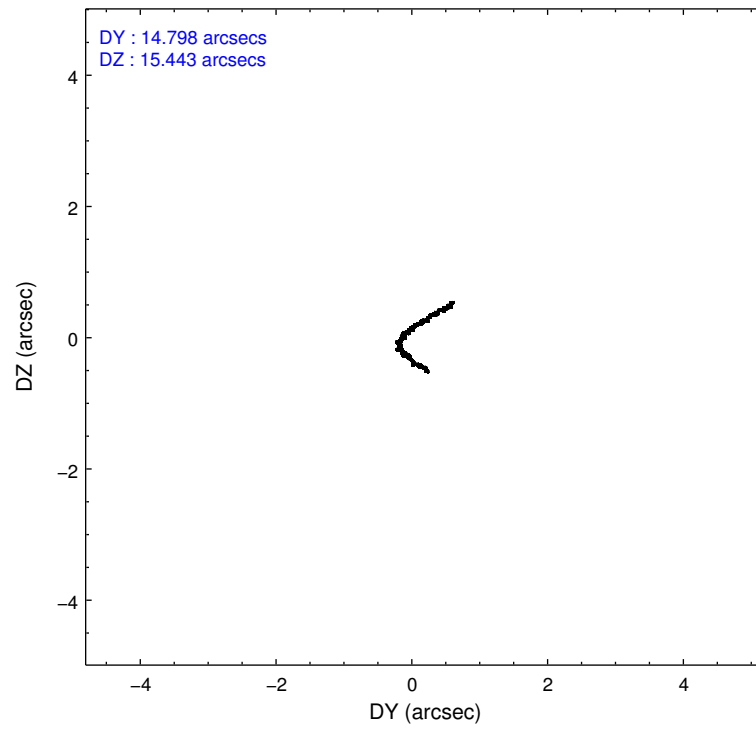
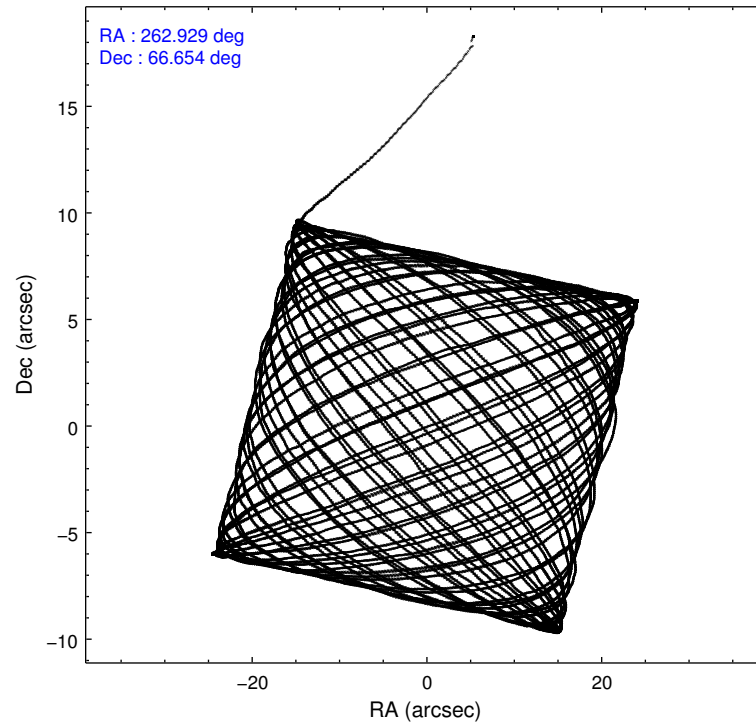
2.1.4 Events

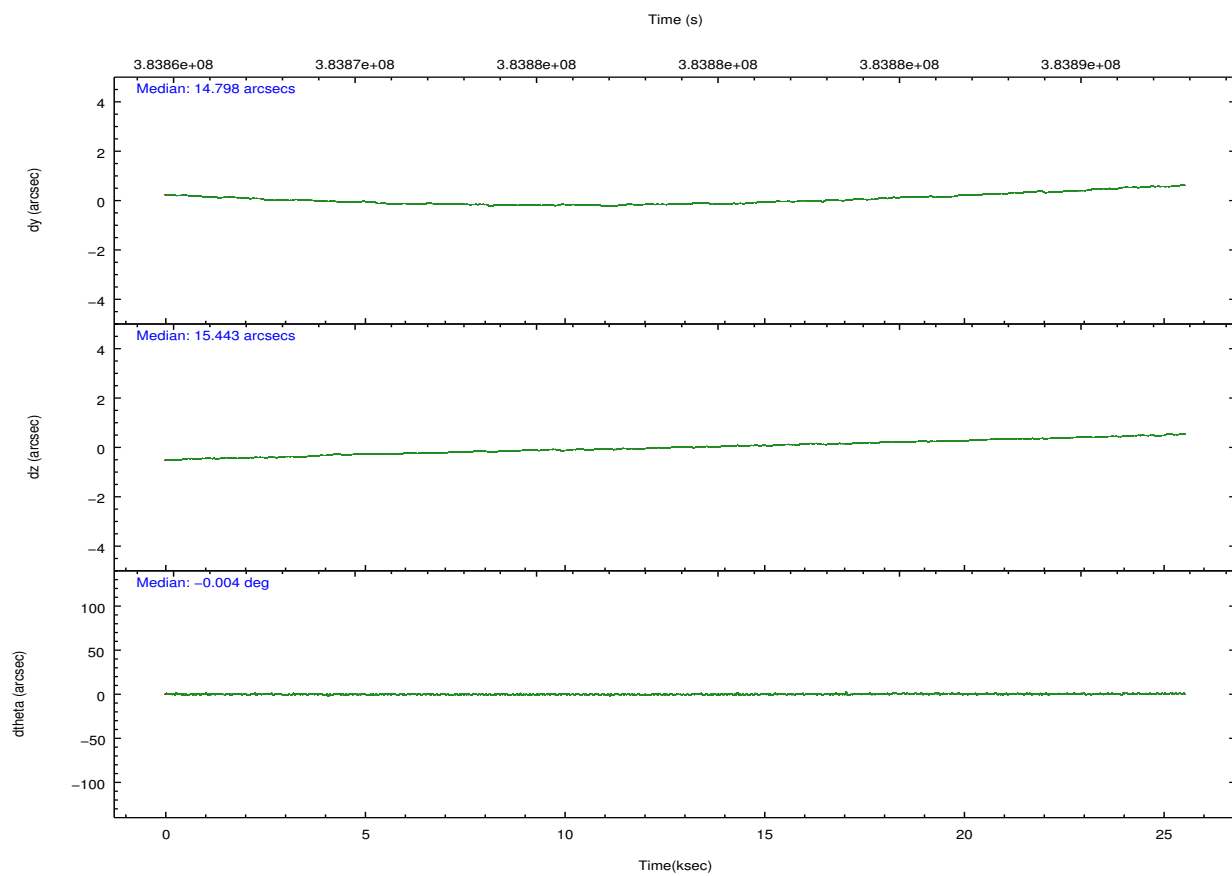
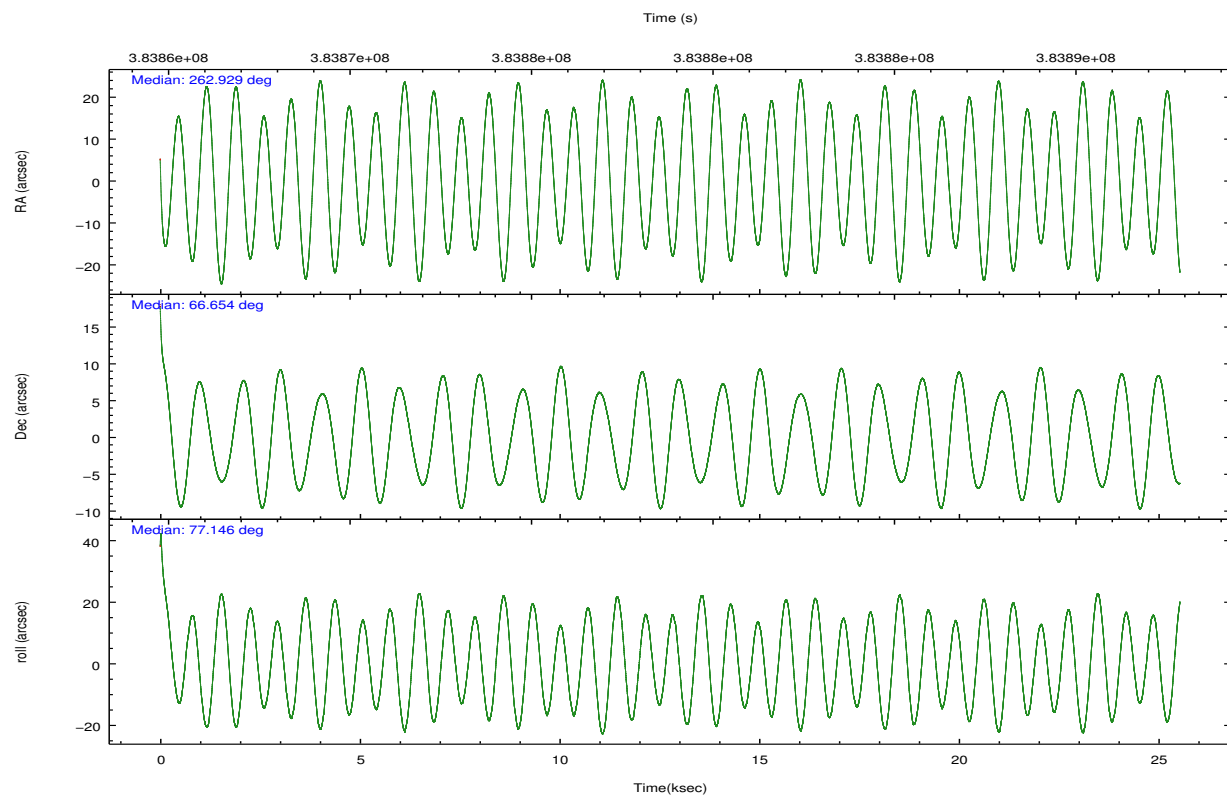
	ccd 2	ccd 3	ccd 5	ccd 6	ccd 7	ccd 8		ccd 2	ccd 3	ccd 5	ccd 6	ccd 7	ccd 8
level 1 events	206041	195867	285925	198107	234766	257535	grade 0 events	7020	6936	9201	7479	9794	19696
rejected events	185641	176188	145722	176704	128570	190844		3%	3%	3%	3%	4%	7%
rejected %	90%	89%	50%	89%	54%	74%	grade 1 events	138	104	519	95	302	196
								0%	0%	0%	0%	0%	0%
							grade 2 events	4978	4458	43208	4770	21609	15465
								2%	2%	15%	2%	9%	6%
							grade 3 events	2096	2172	5825	2260	9445	6963
								1%	1%	2%	1%	4%	2%
							grade 4 events	2217	2195	5670	2216	9283	6518
								1%	1%	1%	1%	3%	2%
							grade 5 events	7472	8459	22621	8270	24461	12438
								3%	4%	7%	4%	10%	4%
							grade 6 events	4091	3920	76325	4681	56075	18052
								1%	2%	26%	2%	23%	7%
							grade 7 events	178029	167623	122556	168336	103797	178207
								86%	85%	42%	84%	44%	69%

2.2 Compared Parameters

Parameter	Planned	Actual	Parameter	Planned	Actual
Instrument	ACIS	ACIS	Obspar format version number	7	7
Detector	ACIS-235678	ACIS-235678	Obspar file type	PREDICTED	ACTUAL
Grating	NONE	NONE	Obspar update status	NONE	UPDATED
Data mode	VFAINT	VFAINT	CCD I0 on	N	N
Observation mode	POINTING	POINTING	CCD I1 on	N	N
[deg] Pointing RA	262.949788	262.9285463782166	CCD I2 on	O1	Y
[deg] Pointing Dec	66.627651	66.65367945048979	CCD I3 on	O2	Y
[deg] Pointing Roll	76.984139	77.16027592509937	CCD S0 on	N	N
[mm] SIM focus pos	-0.684267	-0.6828225247311905	CCD S1 on	Y	Y
[mm] SIM defocus	0	0.001444936568705701	CCD S2 on	Y	Y
[mm] SIM translation stage pos	-190.132523	-190.1400660498719	CCD S3 on	Y	Y
[mm] SIM translation stage offset	0	0.00754346686406393	CCD S4 on	Y	Y
[s] Observation start time (MET)	383867269.184000	383865135.52373	CCD S5 on	N	N
Observation start date	2010-03-01T21:46:43	2010-03-01T21:12:15	Number of optional ACIS chips dropped	0	0
[s] Observation end time (MET)	383891570.184000	383892147.3501	On-chip summing requested	N	N
Observation end date	2010-03-02T04:31:44	2010-03-02T04:42:27	Subarray requested	NONE	NONE
Read mode	TIMED	TIMED	Alternating exposures requested	N	N
			[s] Primary exposure time	0.000000	3.2

2.3 Aspect



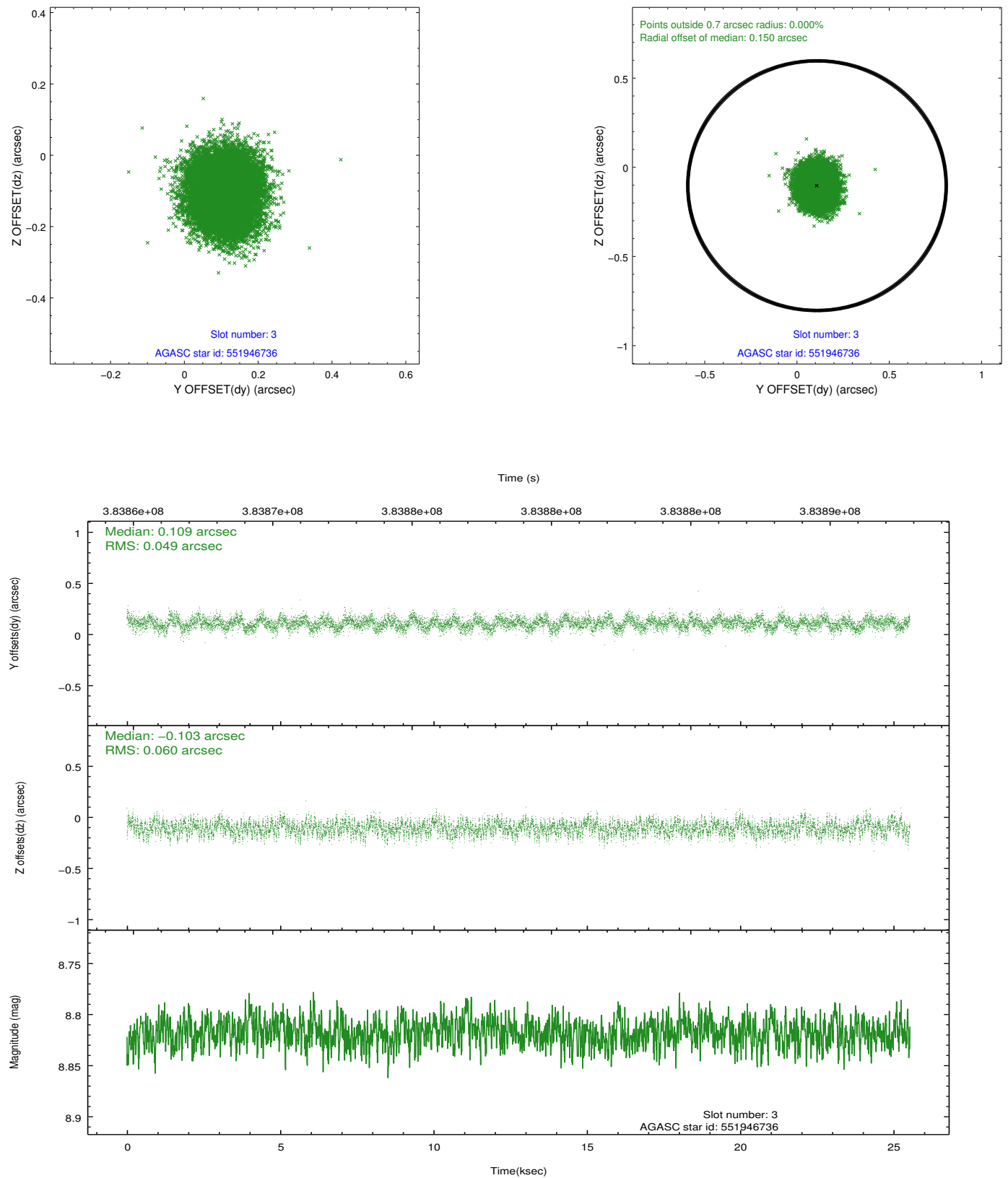


Slot Statistics

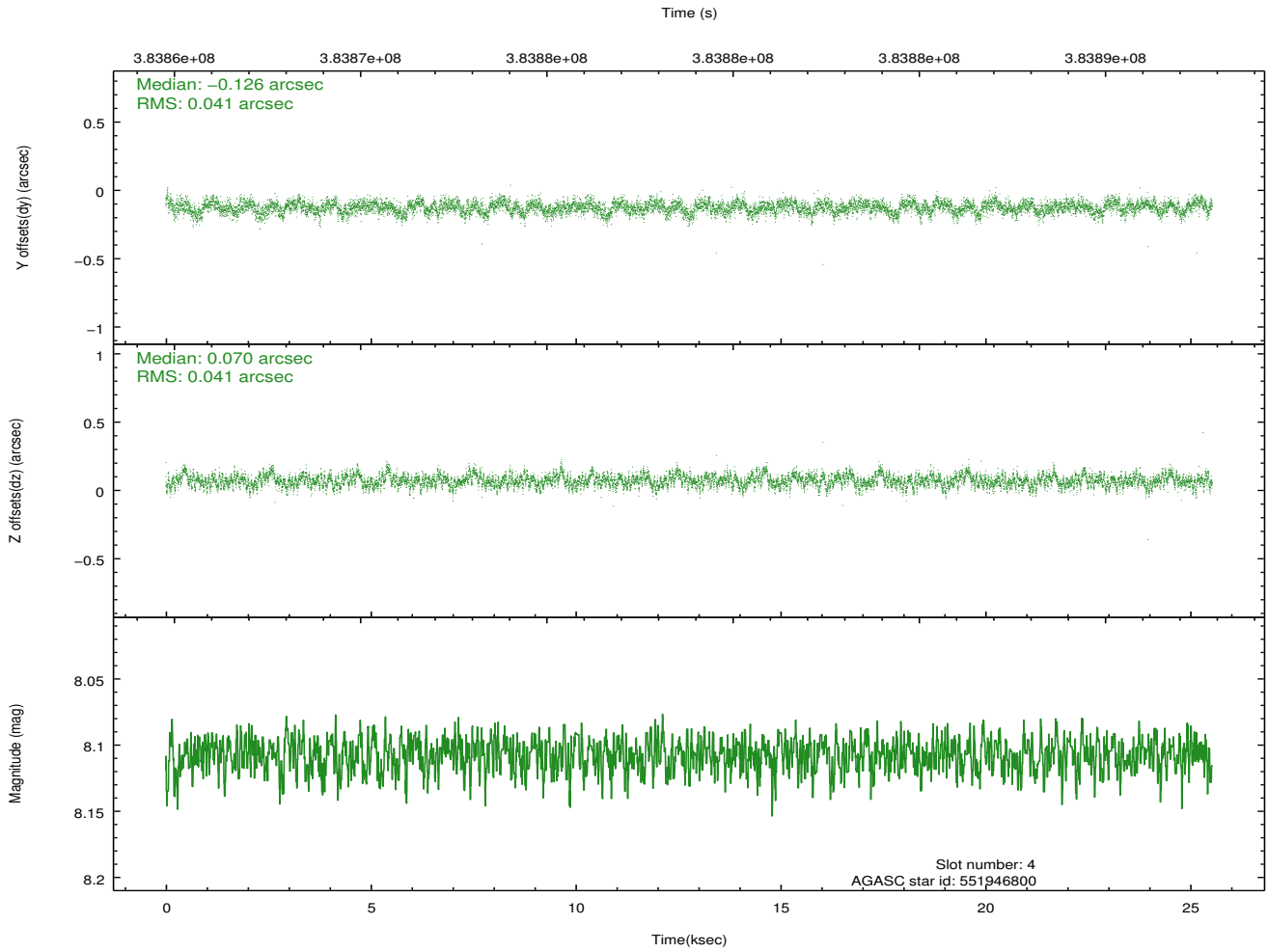
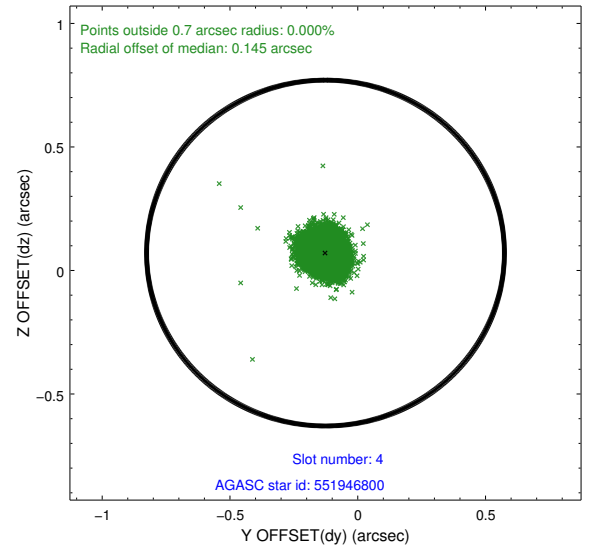
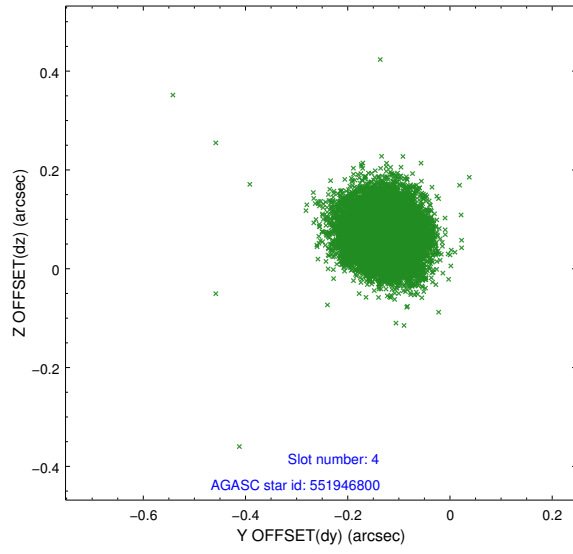
slot	status	id	mag	n_pts	med_dy	med_dz	dr1	dr2	ra	dec	mean_y	mean_z
0	FID	ACIS-S-2	6.91	6229	-0.026	-0.035	0.006	0.011	0.000000	0.000000	-767.85	-1736.87
1	FID	ACIS-S-5	7.02	6229	-0.111	-0.025	0.010	0.021	0.000000	0.000000	-1821.09	165.00
2	FID	ACIS-S-6	7.14	6227	0.110	0.067	0.008	0.018	0.000000	0.000000	393.78	809.11
3	GUIDE	551946736	8.82	12450	0.109	-0.103	0.084	0.132	262.530820	66.939372	962.43	828.94
4	GUIDE	551946800	8.11	12454	-0.126	0.070	0.061	0.099	263.674302	66.922822	1271.68	-754.96
5	GUIDE	551947672	8.58	12453	-0.116	0.083	0.064	0.103	264.350691	66.834287	1193.90	-1759.98
6	GUIDE	551949032	8.04	12451	0.176	0.078	0.076	0.119	263.510442	66.558359	-58.04	-837.72
7	GUIDE	551818280	9.04	12448	-0.042	-0.125	0.091	0.143	261.229817	66.633852	-498.76	2404.71

2.4 Star Slots

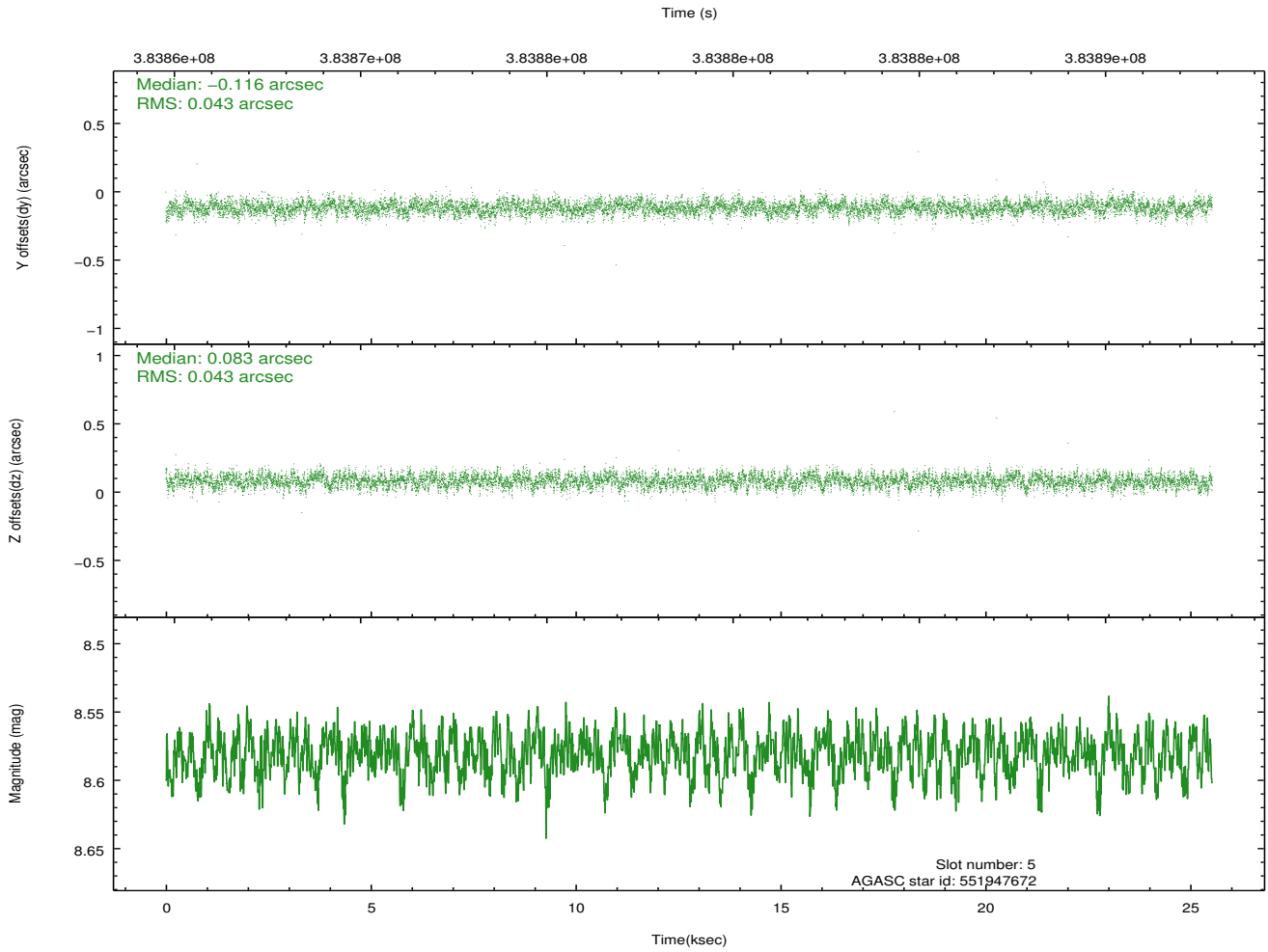
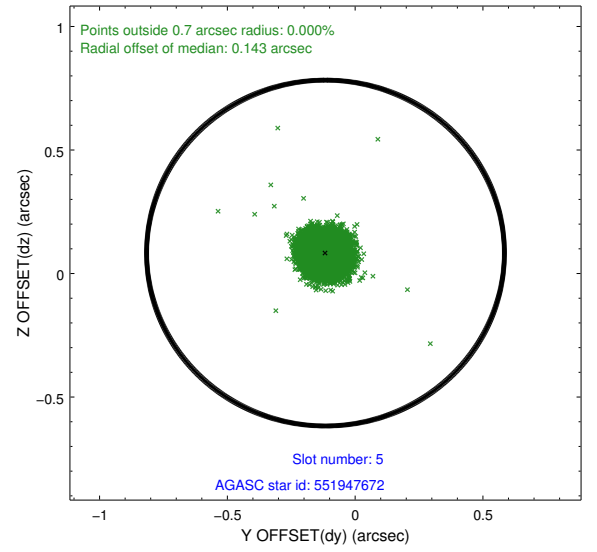
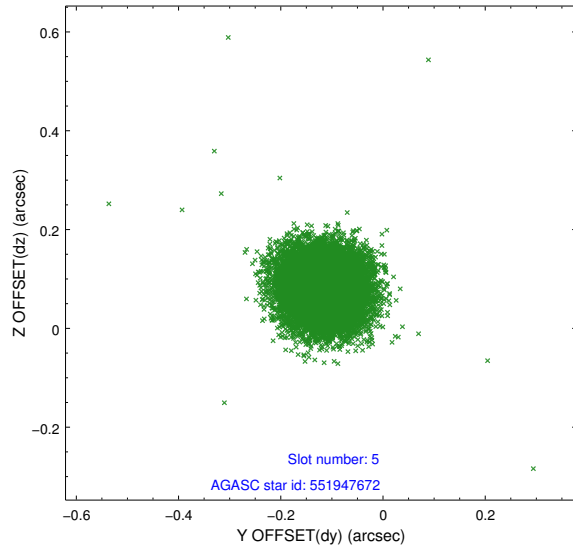
2.4.1 Slot 3



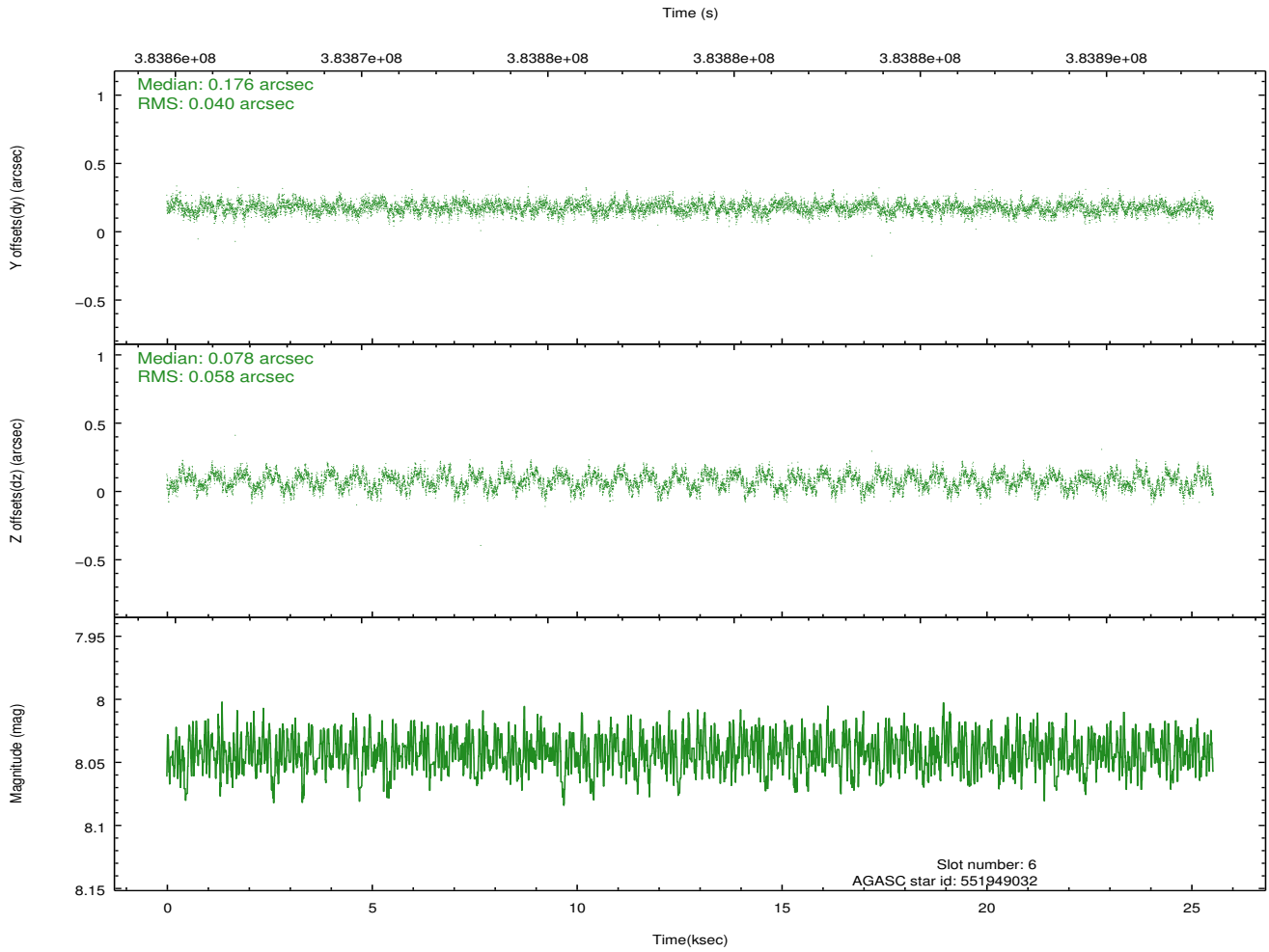
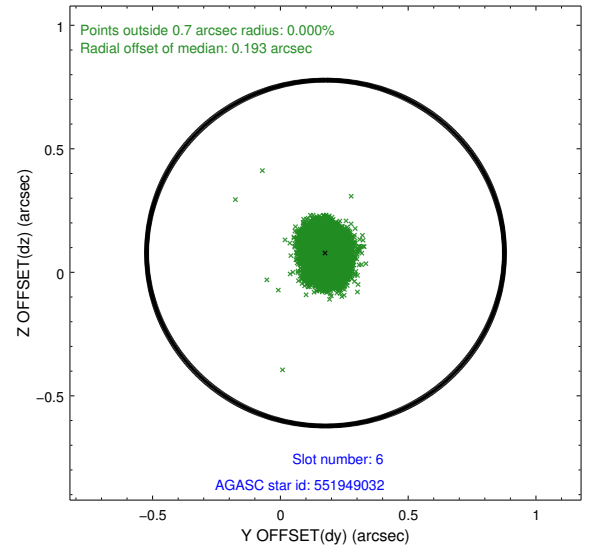
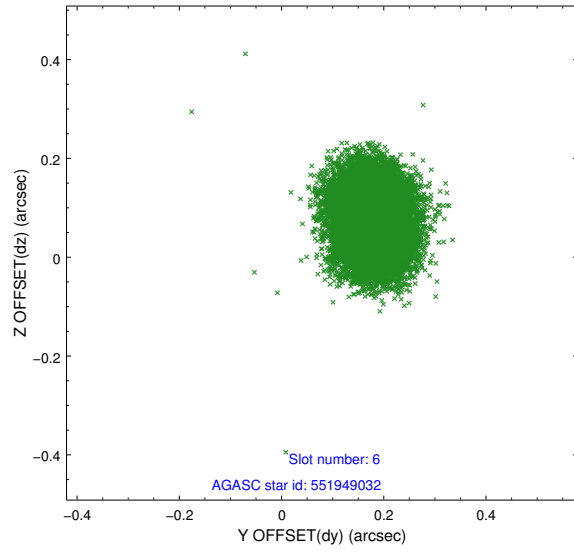
2.4.2 Slot 4



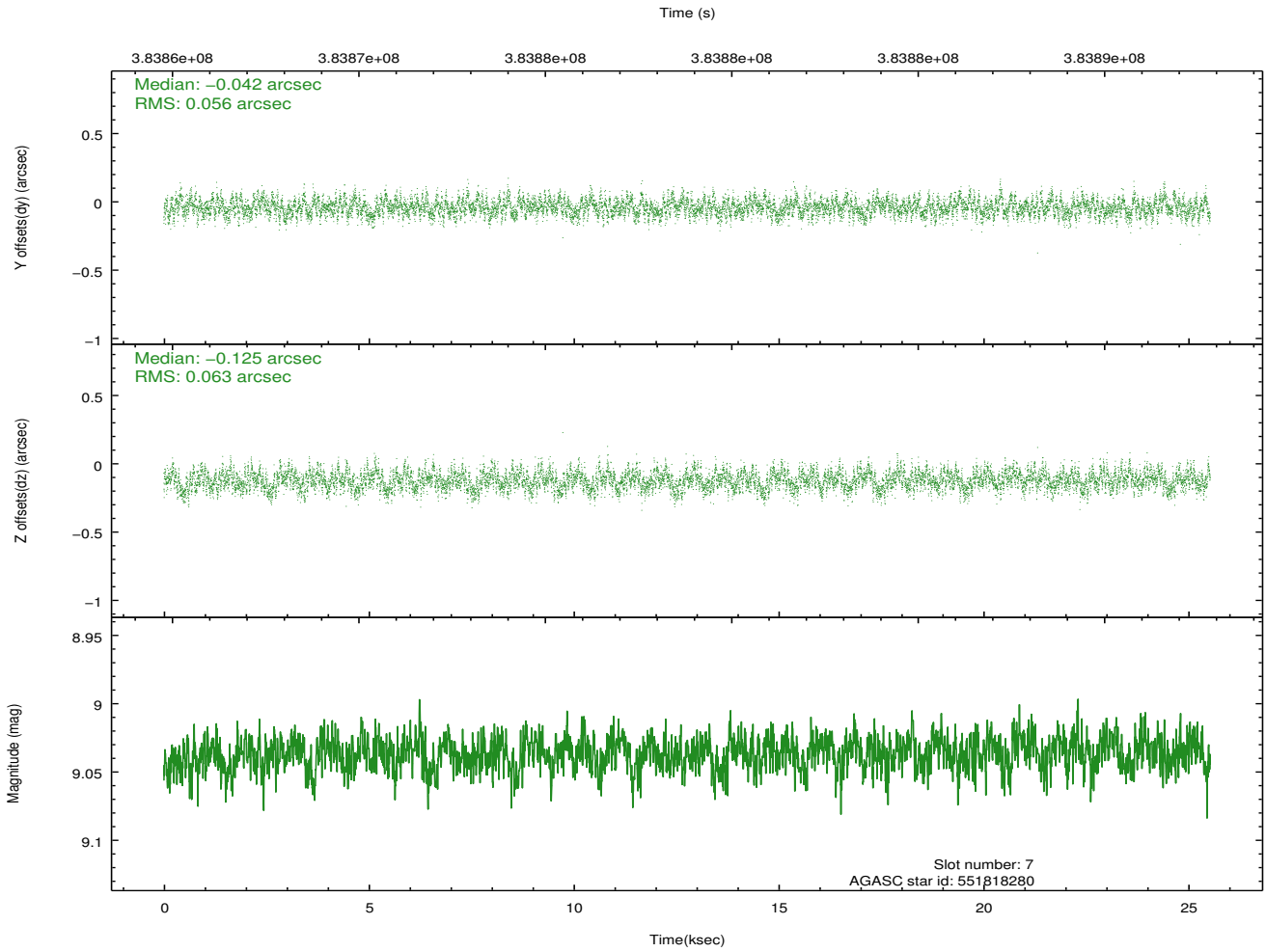
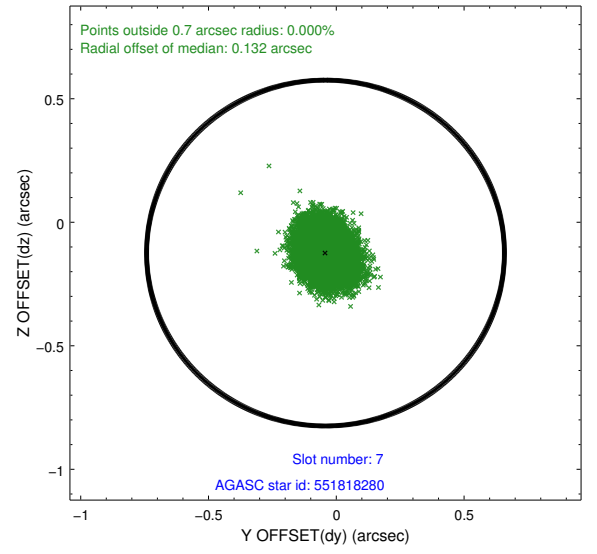
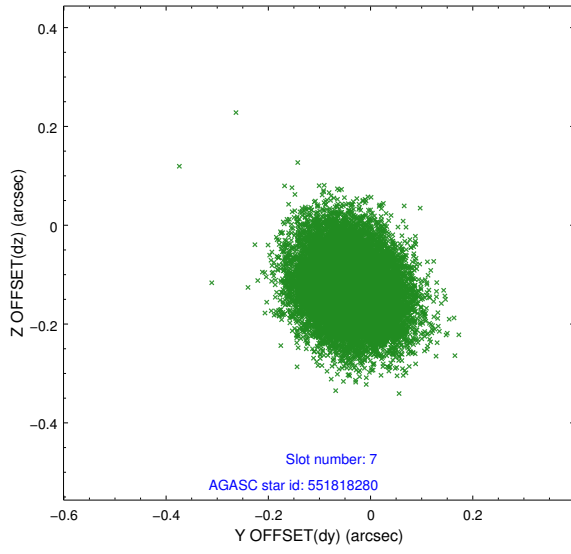
2.4.3 Slot 5



2.4.4 Slot 6

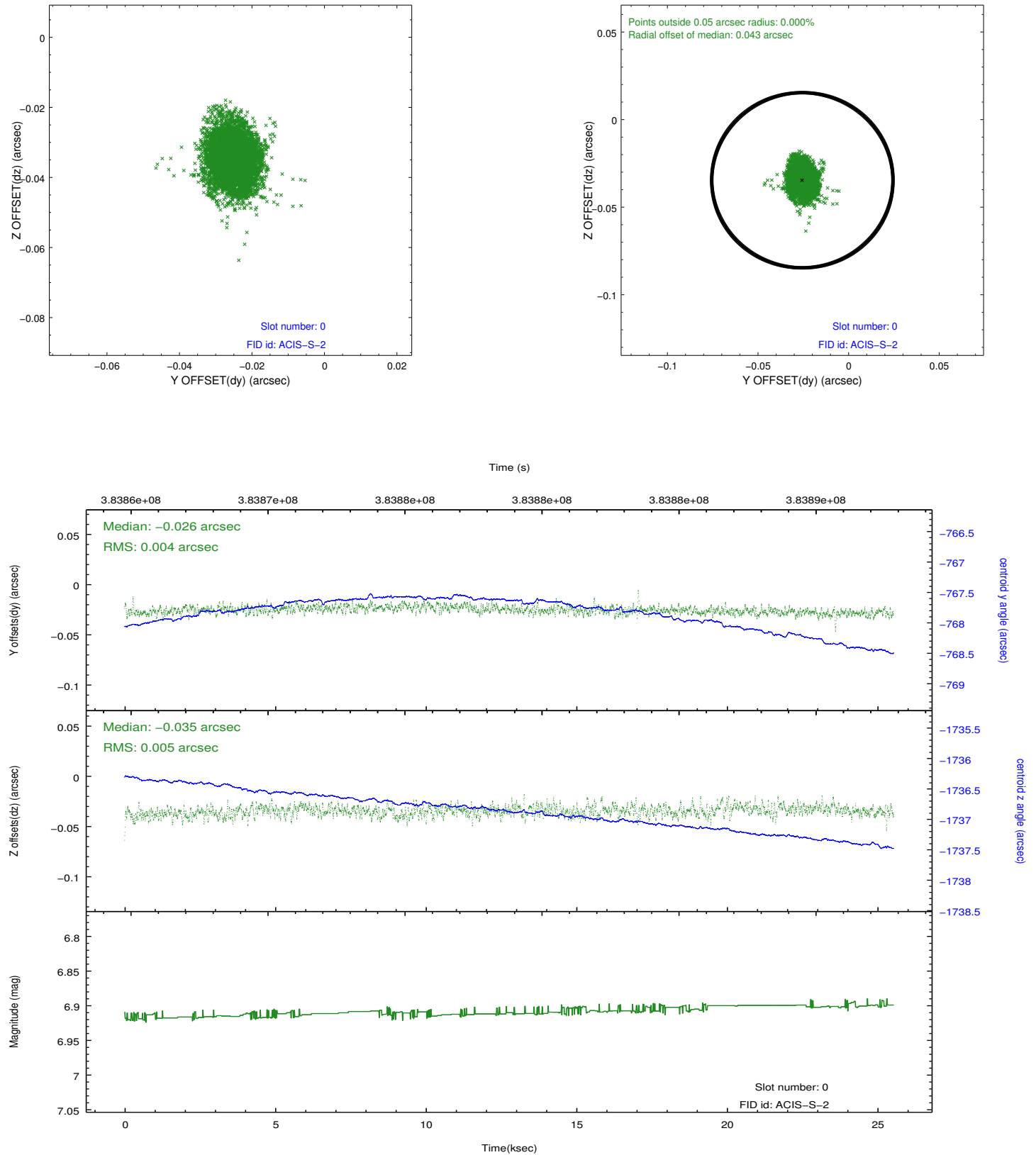


2.4.5 Slot 7

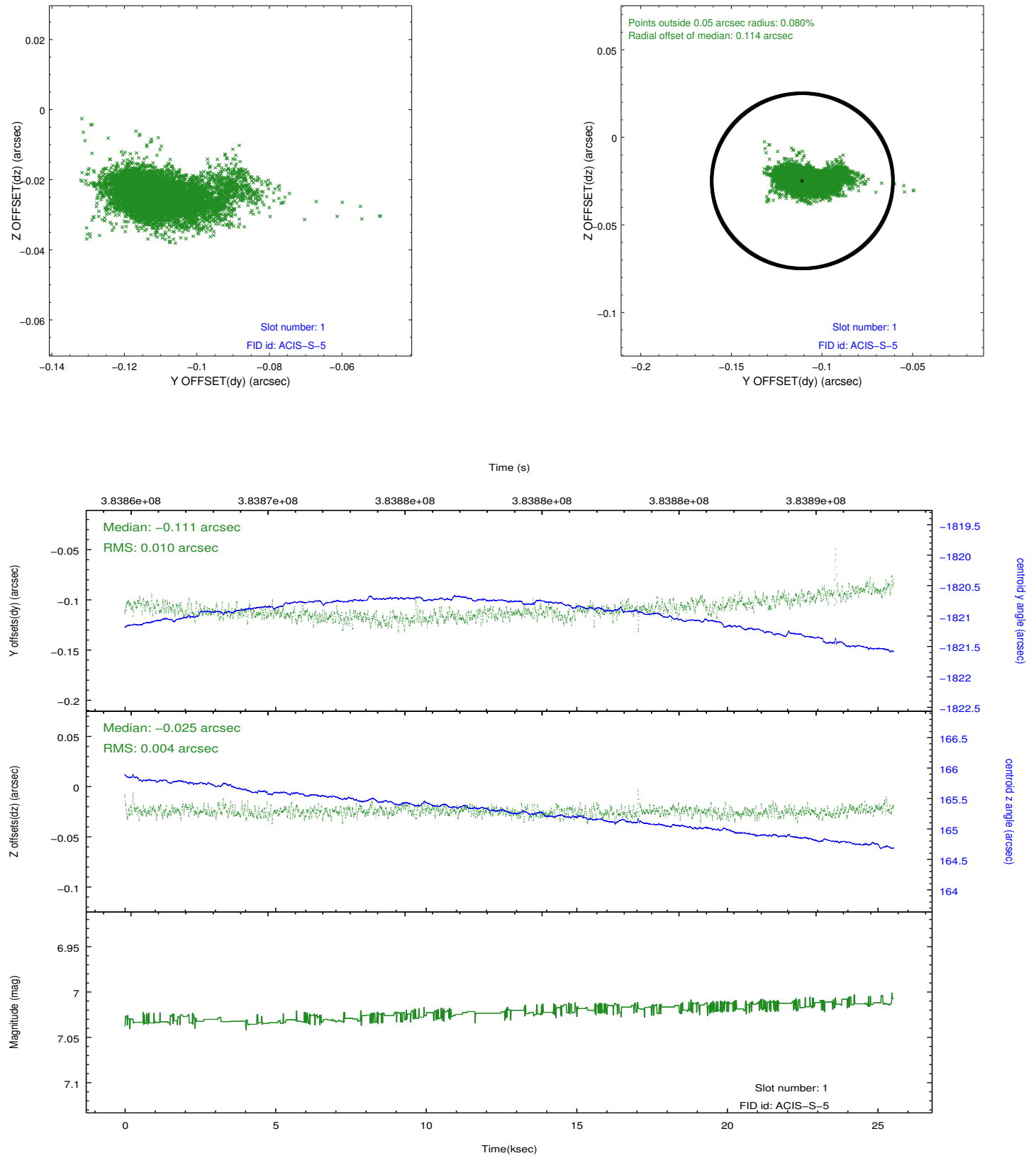


2.5 FID Slots

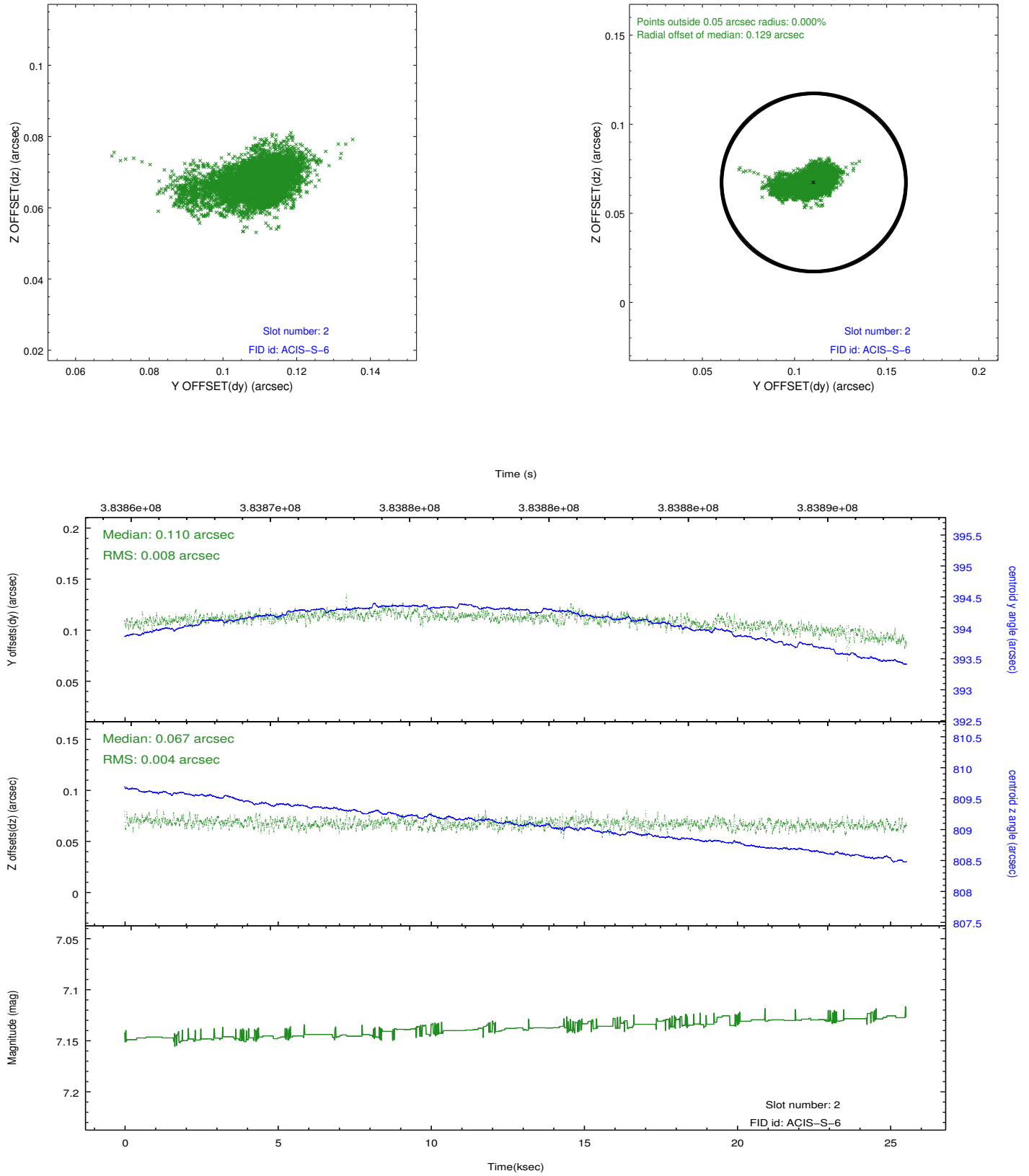
2.5.1 Slot 0



2.5.2 Slot 1



2.5.3 Slot 2



A Summary

A.1 Status

V&V Scientist	Jen Lauer
V&V Date (YYYY-MM-DD)	2012.06.28
V&V Edition	1
V&V Disposition and Status	OK
V&V Charge Time	24.345599909365

A.2 Comments