

# V&V Reference Report

## L2 ASCDS Version : 8.4.5

Observation 11543 - L2 Version 2  
Chandra X-Ray Center

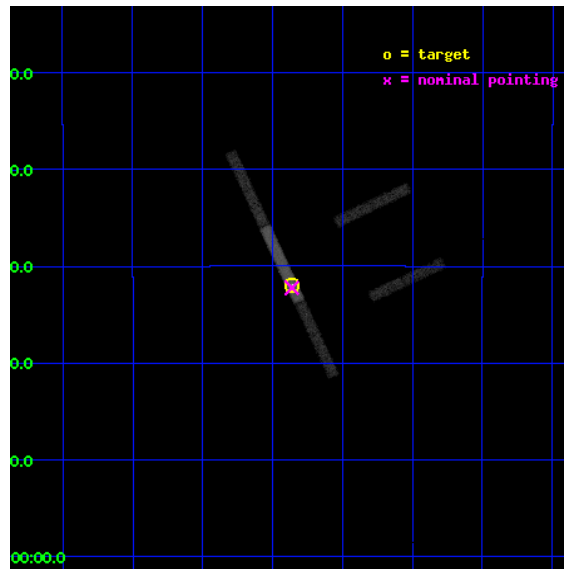
L2 Processing Date : Jun 28 2012

## Contents

<b>1</b>	<b>Front</b>	<b>2</b>
<b>2</b>	<b>OBI</b>	<b>3</b>
2.1	OBI . . . . .	3
2.1.1	Images . . . . .	3
2.1.2	Bias . . . . .	3
2.1.3	Parameters . . . . .	4
2.1.4	Events . . . . .	4
2.2	Compared Parameters . . . . .	5
2.3	Aspect . . . . .	6
2.4	Star Slots . . . . .	9
2.4.1	Slot 3 . . . . .	9
2.4.2	Slot 4 . . . . .	10
2.4.3	Slot 5 . . . . .	11
2.4.4	Slot 6 . . . . .	12
2.4.5	Slot 7 . . . . .	13
2.5	FID Slots . . . . .	14
2.5.1	Slot 0 . . . . .	14
2.5.2	Slot 1 . . . . .	15
2.5.3	Slot 2 . . . . .	16
<b>A</b>	<b>Summary</b>	<b>17</b>
A.1	Status . . . . .	17
A.2	Comments . . . . .	17

# 1 Front

seq_num	702129	Sequence number
obs_id	11543	Observation id
title	The Size of Quasar Non-Thermal/X-ray Emission Regions	Proposal tit
observer	Prof. Christopher Kochanek	Principal investigator
object	RXJ1131-1231	Source name
dtcycle	0	&#160
cycle	P	events from which exps? Prim/Second/Both
ra_targ	172.965	Observer's specified target RA [deg]
dec_targ	-12.5325	Observer's specified target Dec [deg]
ra_nom	172.96558067222	Nominal RA [deg]
dec_nom	-12.537309582504	Nominal Dec [deg]
roll_nom	244.96722569731	Nominal Roll [deg]
revision	2	Processing version of data
ontime	26063.799556077	Sum of GTIs [s]
livetime	24620.343961532	Livetime [s]
ontime2	26063.799556077	Sum of GTIs [s]
ontime3	26063.799556077	Sum of GTIs [s]
ontime6	26063.799556077	Sum of GTIs [s]
ontime7	26063.799556077	Sum of GTIs [s]
ontime8	26062.317495942	Sum of GTIs [s]
l2events	49626	Number of level 2 events

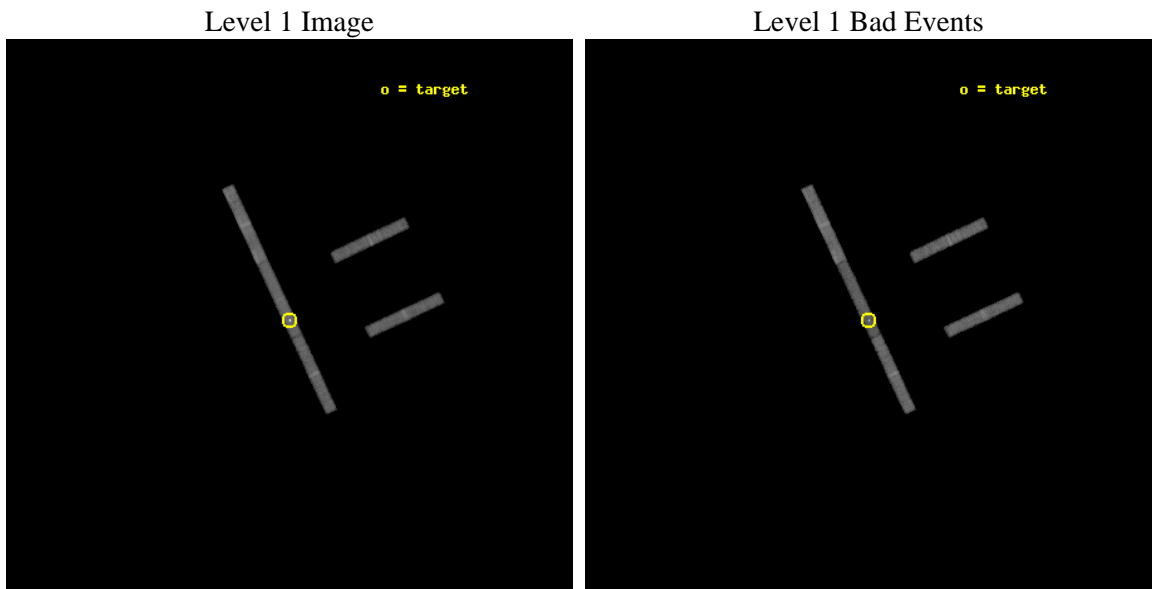




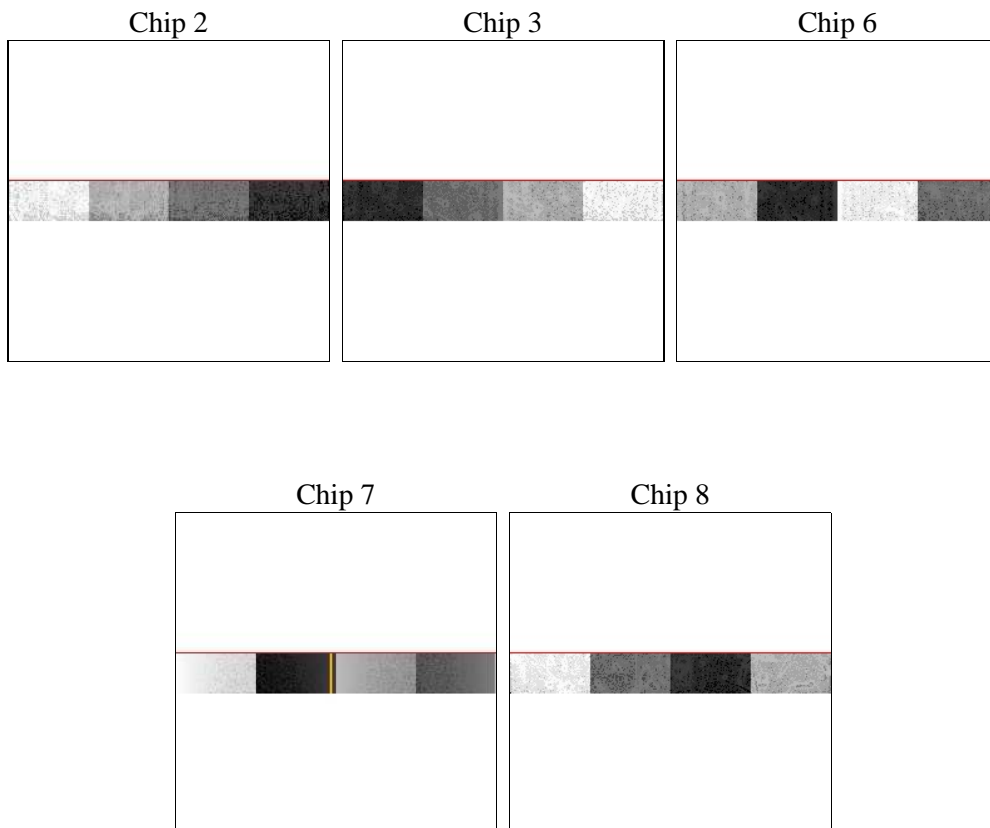
## 2 OBI

### 2.1 OBI

#### 2.1.1 Images



#### 2.1.2 Bias



### 2.1.3 Parameters

obi_num	0	Obi number	sched_exp_time	26000.000000	[s] Scheduled observation exposure time
ascdsver	8.4.5	Processing system revision	ontime	26063.799556077	Sum of GTIs [s]
caldsver	4.5.0	&#160	ontime2	26063.799556077	Sum of GTIs [s]
date	2012-06-28T22:12:29	Date and time of file creation	ontime3	26063.799556077	Sum of GTIs [s]
revision	2	Processing version of data	ontime6	26063.799556077	Sum of GTIs [s]
			ontime7	26063.799556077	Sum of GTIs [s]
			ontime8	26062.317495942	Sum of GTIs [s]
			l1events	200344	Number of level 1 events

### 2.1.4 Events

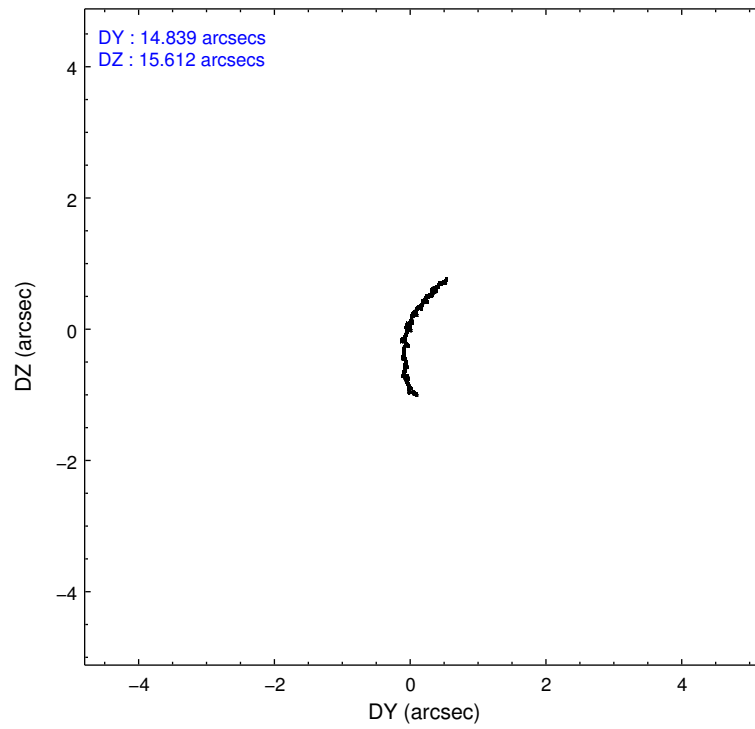
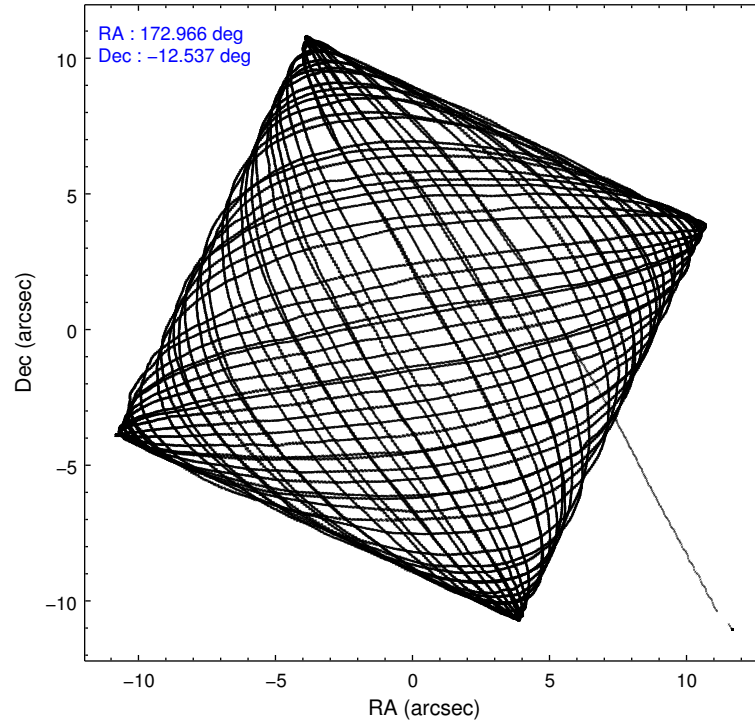
	ccd 2	ccd 3	ccd 6	ccd 7	ccd 8
level 1 events	30503	30725	32729	59090	47297
rejected events	27272	27458	29148	20017	37481
rejected %	89%	89%	89%	33%	79%

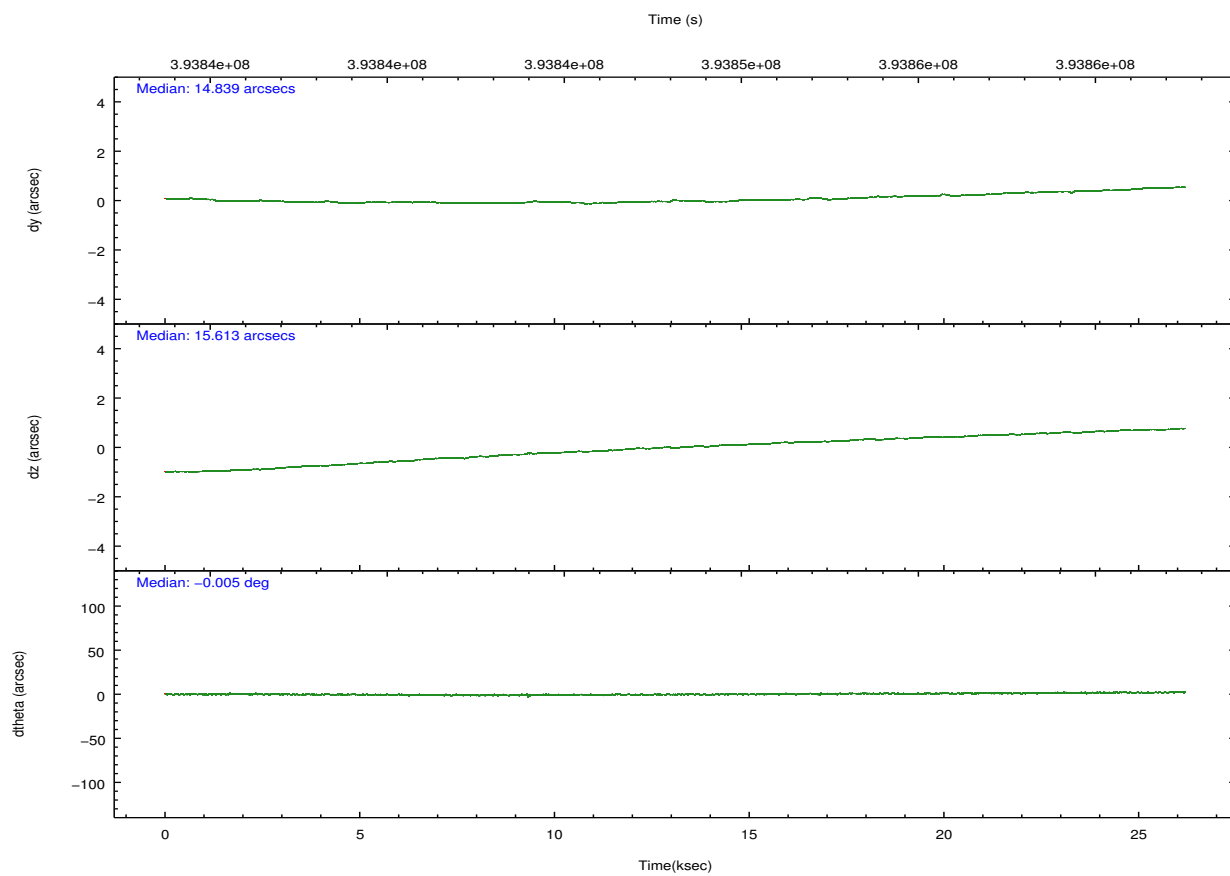
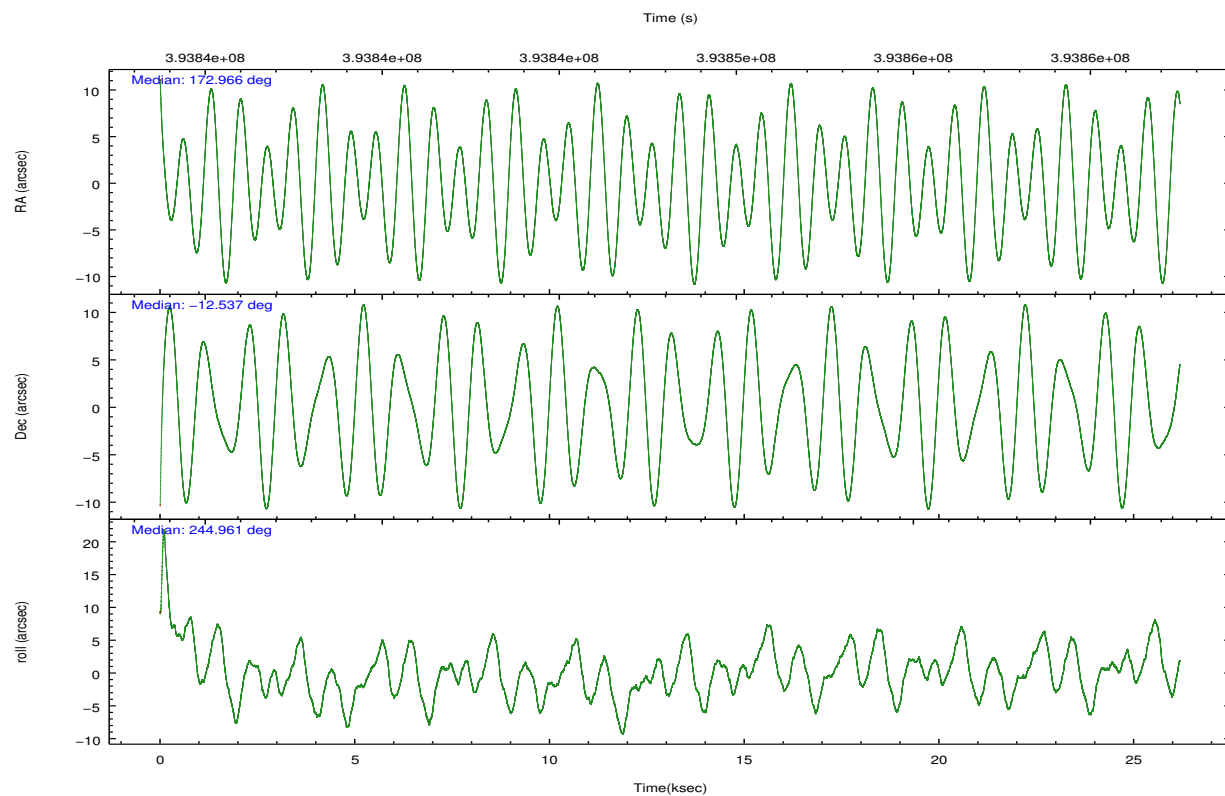
	ccd 2	ccd 3	ccd 6	ccd 7	ccd 8
grade 0 events	931	918	1009	7845	2307
	3%	2%	3%	13%	4%
grade 1 events	7	15	7	342	14
	0%	0%	0%	0%	0%
grade 2 events	674	608	645	9280	2182
	2%	1%	1%	15%	4%
grade 3 events	536	608	596	4495	1050
	1%	1%	1%	7%	2%
grade 4 events	575	562	650	4483	1002
	1%	1%	1%	7%	2%
grade 5 events	882	1129	1242	4500	1665
	2%	3%	3%	7%	3%
grade 6 events	515	571	681	12972	3275
	1%	1%	2%	21%	6%
grade 7 events	26383	26314	27899	15173	35802
	86%	85%	85%	25%	75%

## 2.2 Compared Parameters

Parameter	Planned	Actual	Parameter	Planned	Actual
Instrument	ACIS	ACIS	Obspar format version number	7	7
Detector	ACIS-23678	ACIS-23678	Obspar file type	PREDICTED	ACTUAL
Grating	NONE	NONE	Obspar update status	NONE	UPDATED
Data mode	VFAINT	VFAINT	CCD I0 on	N	N
Observation mode	POINTING	POINTING	CCD I1 on	N	N
[deg] Pointing RA	172.962771	172.9655806722218	CCD I2 on	O4	Y
[deg] Pointing Dec	-12.510114	-12.53730958250357	CCD I3 on	O3	Y
[deg] Pointing Roll	244.809999	244.9672256973142	CCD S0 on	N	N
[mm] SIM focus pos	-0.684267	-0.6828225247311905	CCD S1 on	N	N
[mm] SIM defocus	0	0.001444936568705701	CCD S2 on	O1	Y
[mm] SIM translation stage pos	-190.132523	-190.1425803651734	CCD S3 on	Y	Y
[mm] SIM translation stage offset	0	0.01005778216563158	CCD S4 on	O2	Y
[s] Observation start time (MET)	393835228.184000	393834231.1933	CCD S5 on	N	N
Observation start date	2010-06-25T06:39:22	2010-06-25T06:23:51	Number of optional ACIS chips dropped	0	0
[s] Observation end time (MET)	393861228.184000	393862097.35722	On-chip summing requested	N	N
Observation end date	2010-06-25T13:52:42	2010-06-25T14:08:17	Subarray requested	CUSTOM	1/8
Read mode	TIMED	TIMED	Subarray start row	449	449
			Subarray row count	128	128
			Alternating exposures requested	N	N
			[s] Primary exposure time	0.000000	0.7

## 2.3 Aspect



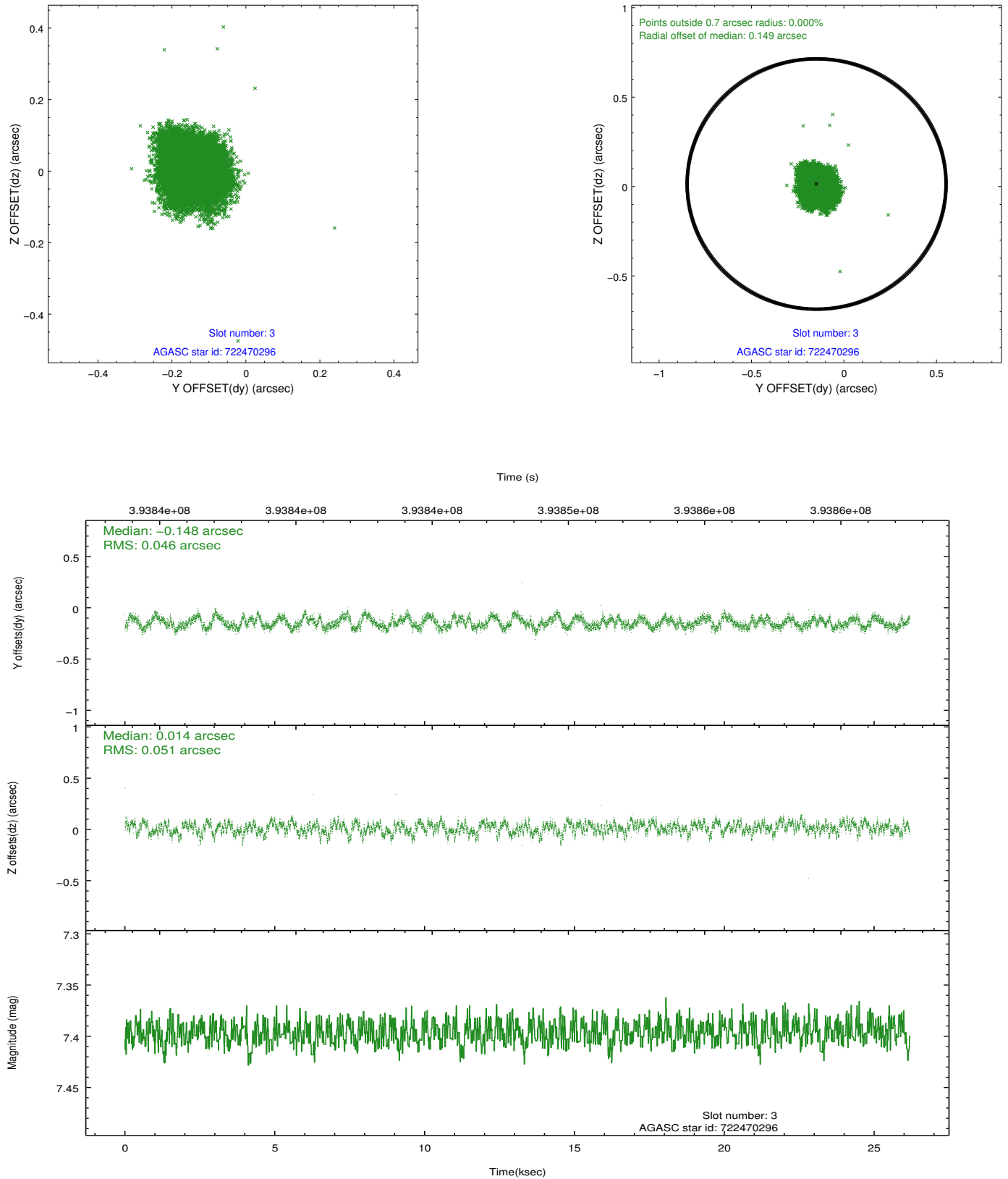


### Slot Statistics

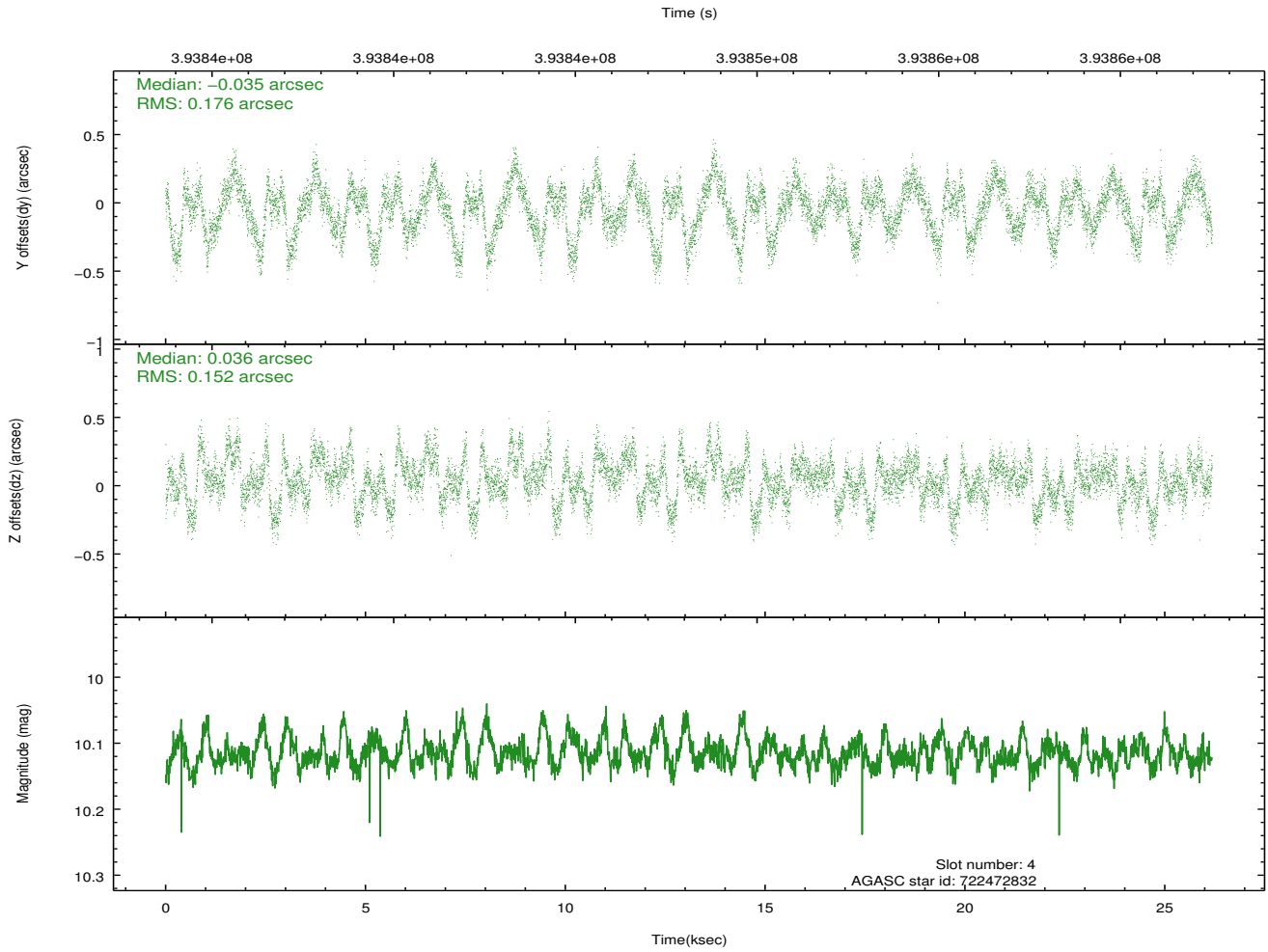
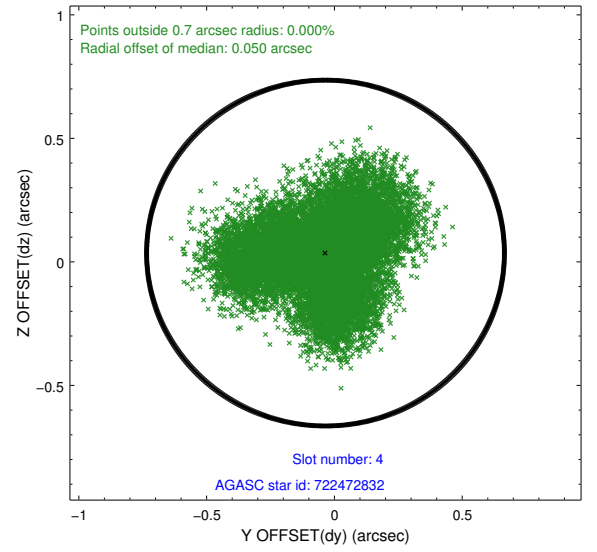
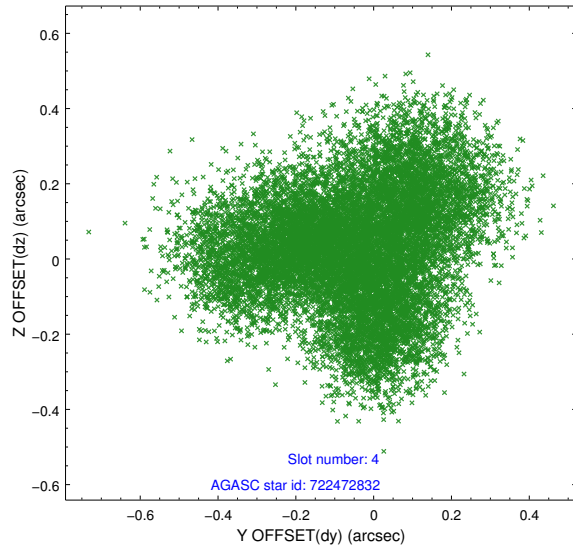
slot	status	id	mag	n_pts	med_dy	med_dz	dr1	dr2	ra	dec	mean_y	mean_z
0	FID	ACIS-S-1	7.04	6387	0.025	-0.053	0.030	0.043	0.000000	0.000000	928.18	-1732.58
1	FID	ACIS-S-4	7.05	6387	0.155	0.030	0.017	0.028	0.000000	0.000000	2145.76	171.56
2	FID	ACIS-S-5	7.07	6387	-0.208	0.036	0.014	0.019	0.000000	0.000000	-1820.80	165.26
3	GUIDE	722470296	7.40	12771	-0.148	0.014	0.074	0.114	172.921689	-12.381367	-357.59	-328.17
4	GUIDE	722472832	10.12	12757	-0.035	0.036	0.255	0.389	173.078970	-12.015349	-1785.45	-387.90
5	GUIDE	722473176	9.48	12760	-0.059	-0.153	0.155	0.233	172.599746	-12.066793	-898.80	-1835.70
6	GUIDE	722871728	9.67	12758	0.173	-0.001	0.114	0.181	173.202235	-12.568355	-167.57	850.60
7	GUIDE	722873464	7.34	12772	0.080	0.111	0.104	0.159	172.661543	-13.050266	2210.68	-127.00

## 2.4 Star Slots

### 2.4.1 Slot 3

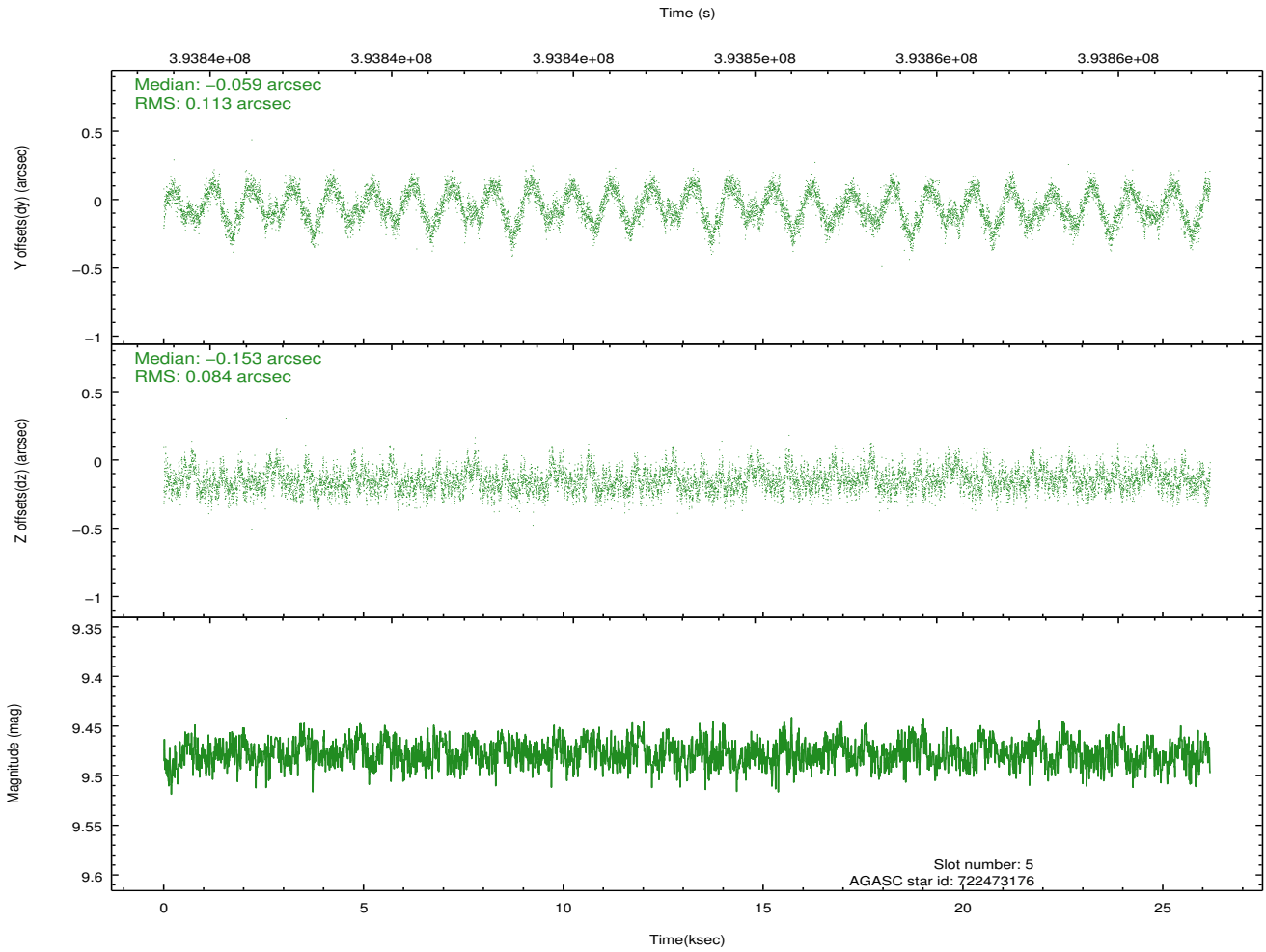
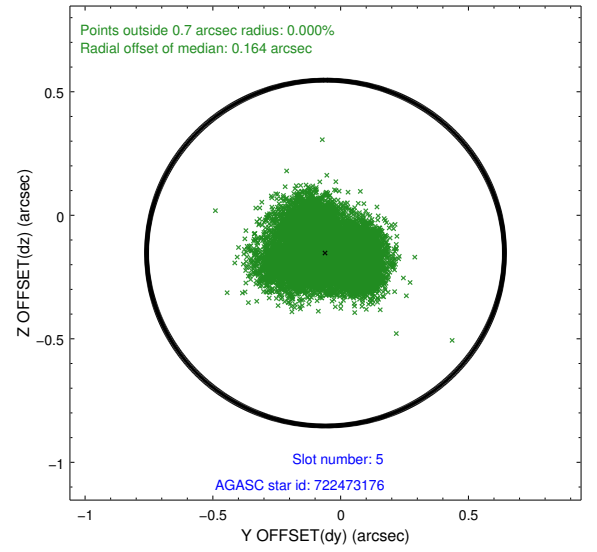
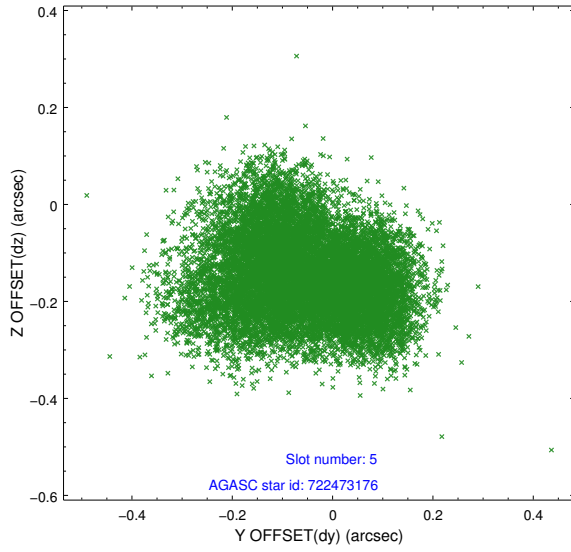


## 2.4.2 Slot 4

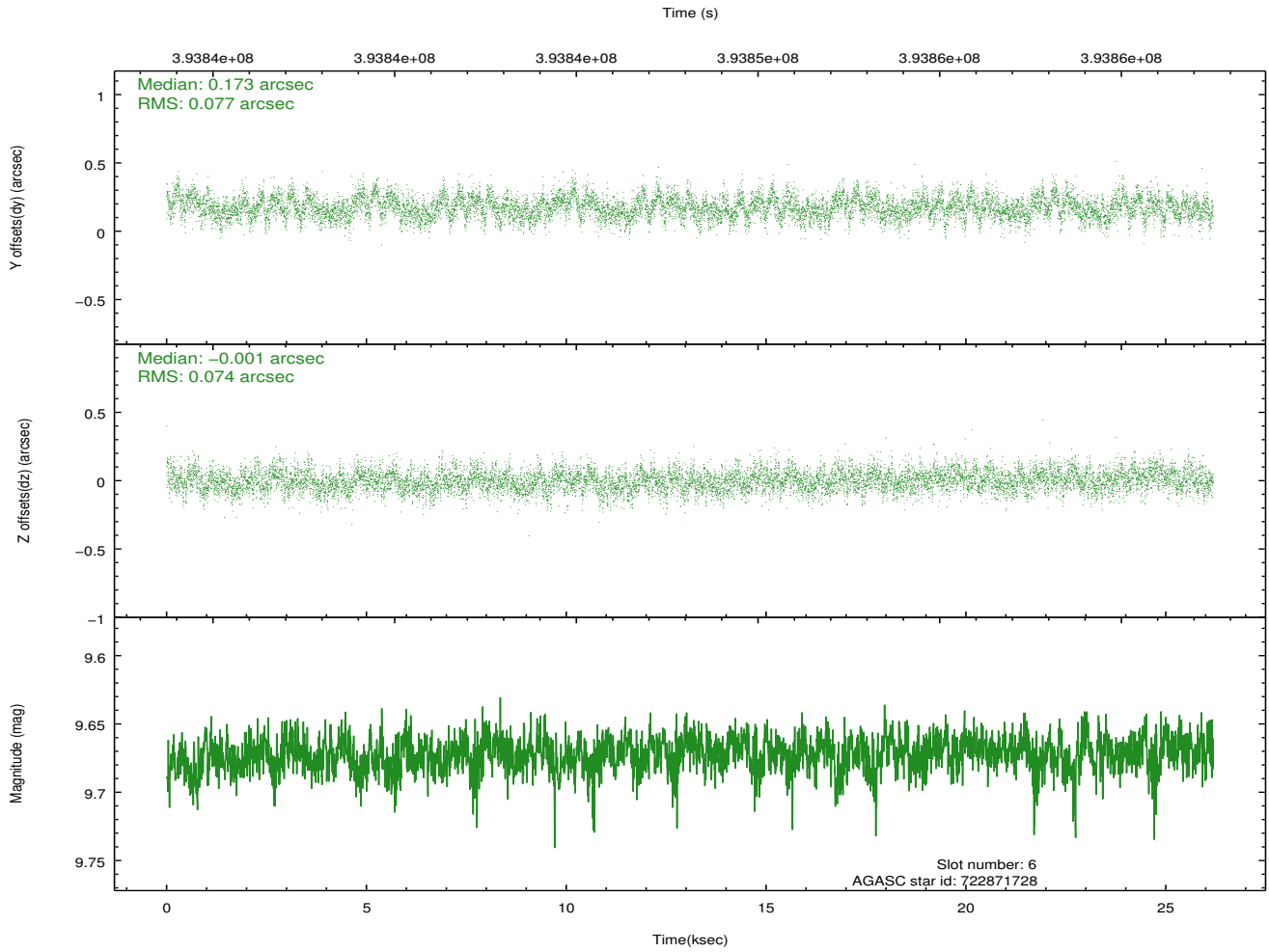
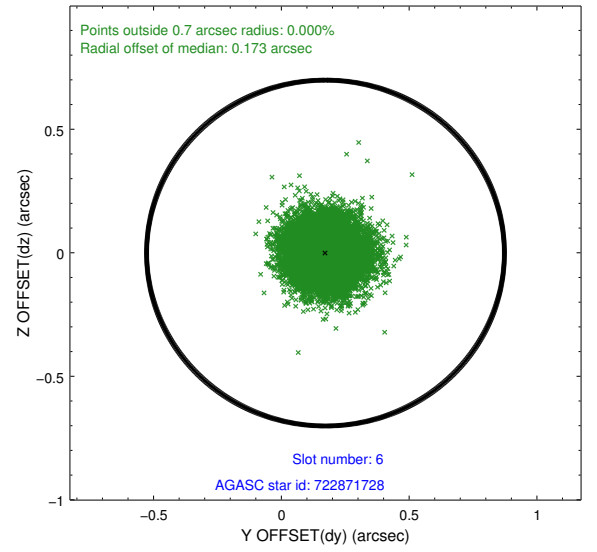
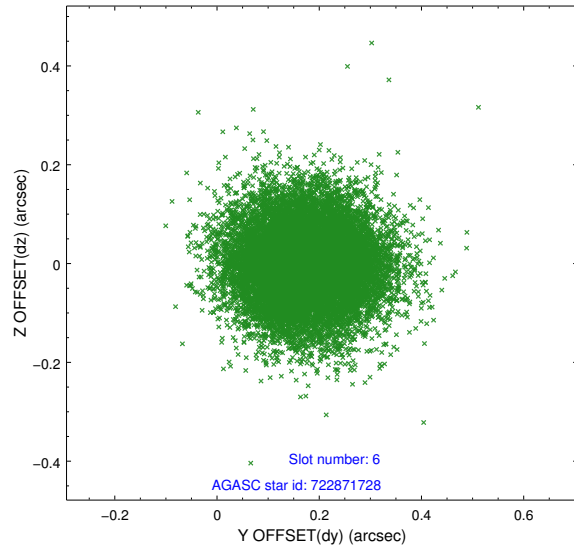




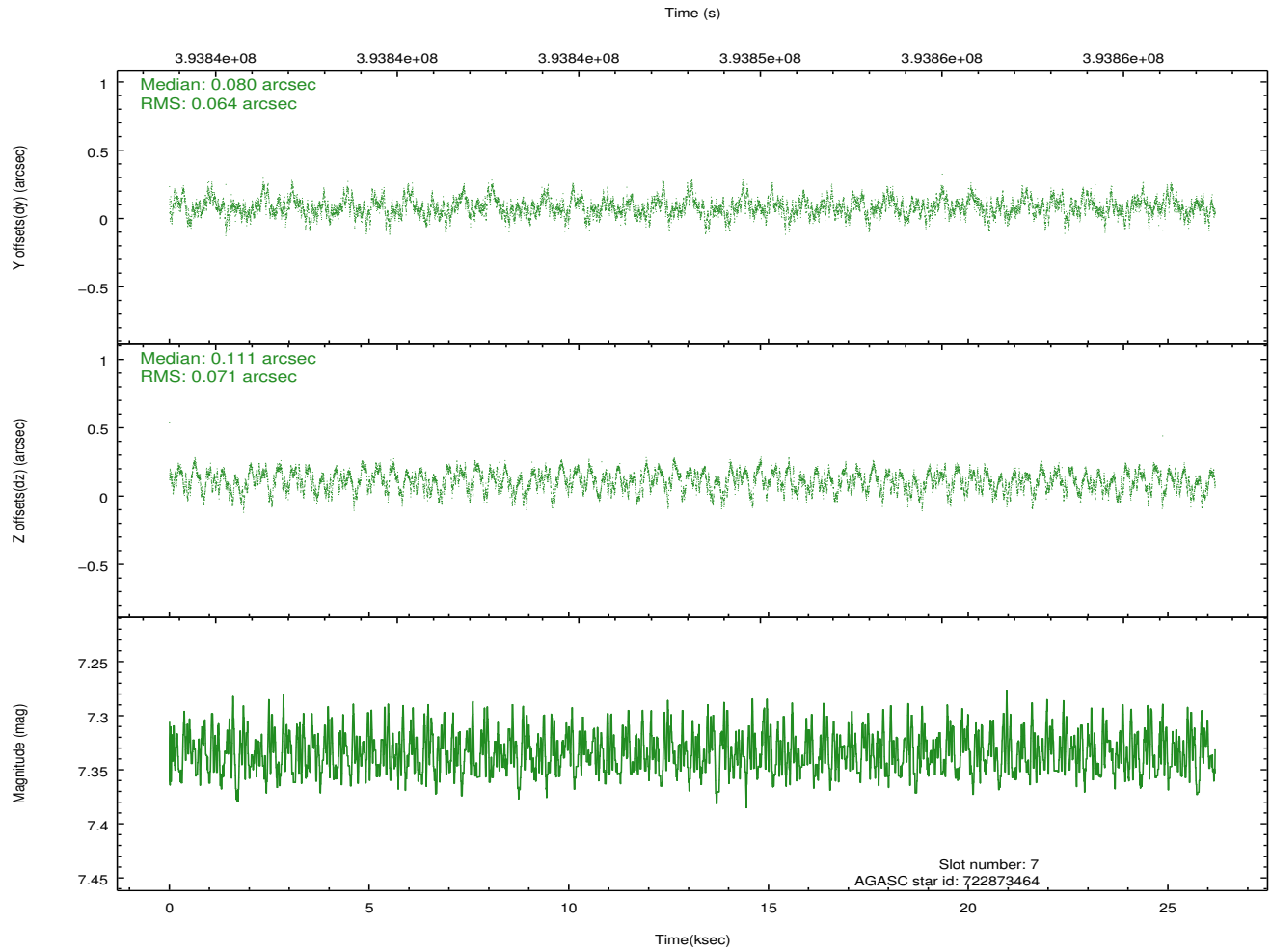
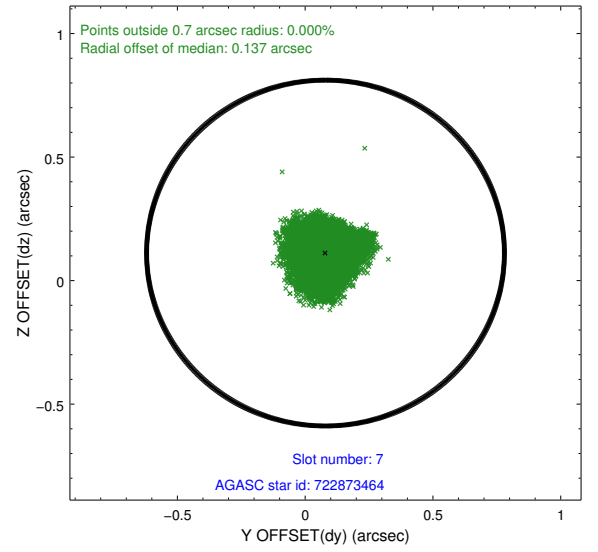
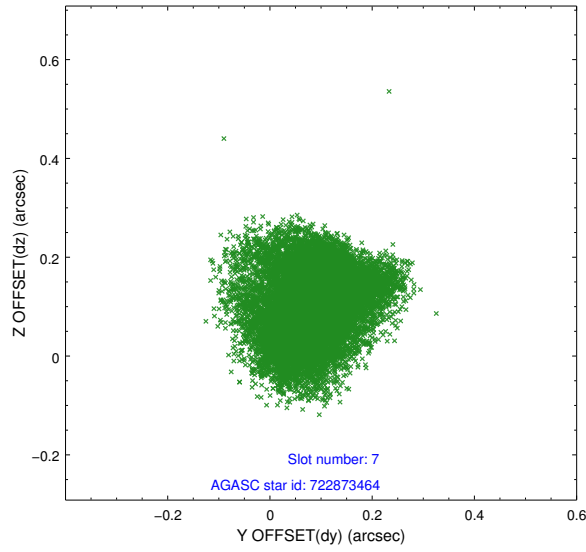
### 2.4.3 Slot 5



## 2.4.4 Slot 6

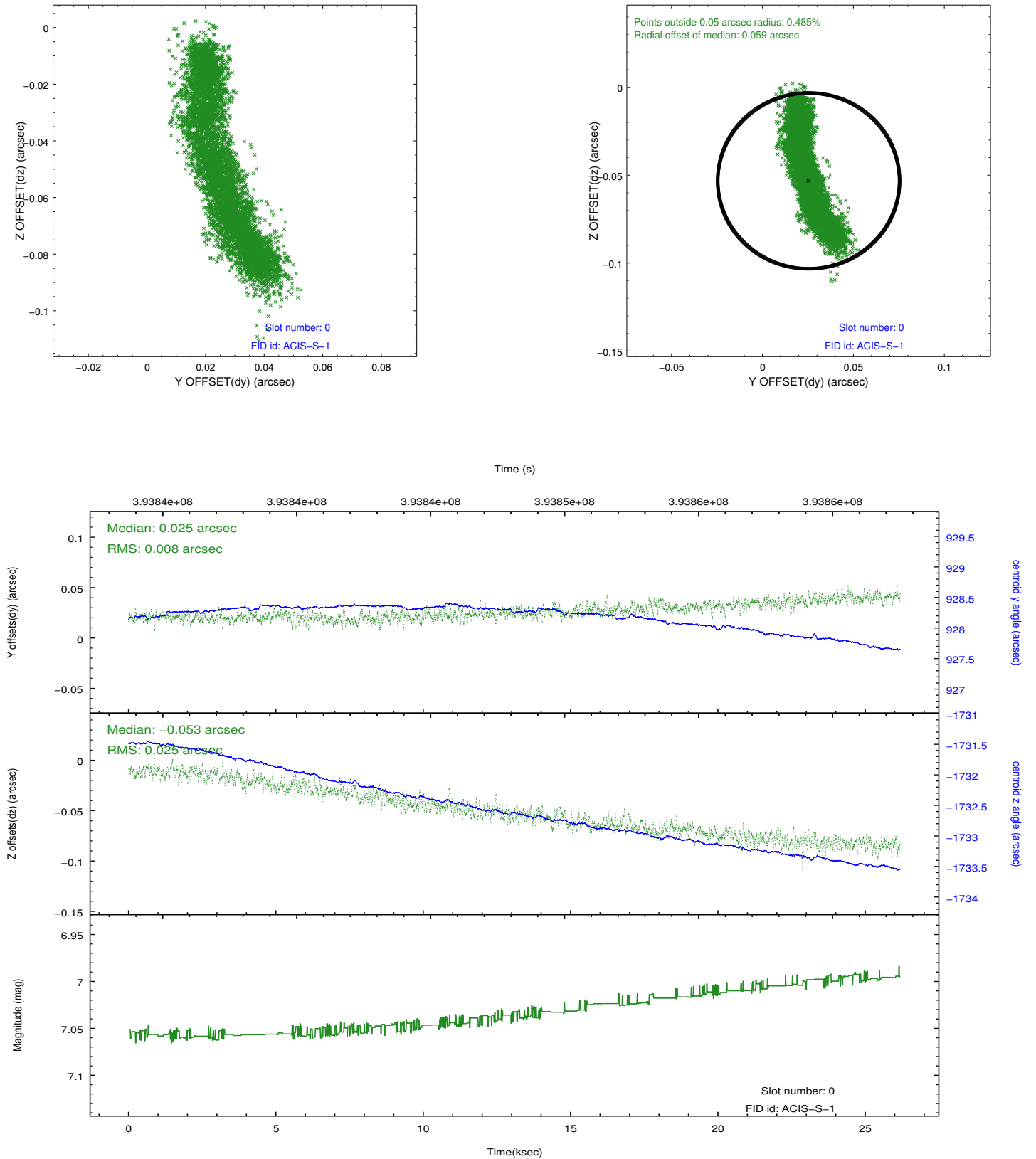


## 2.4.5 Slot 7

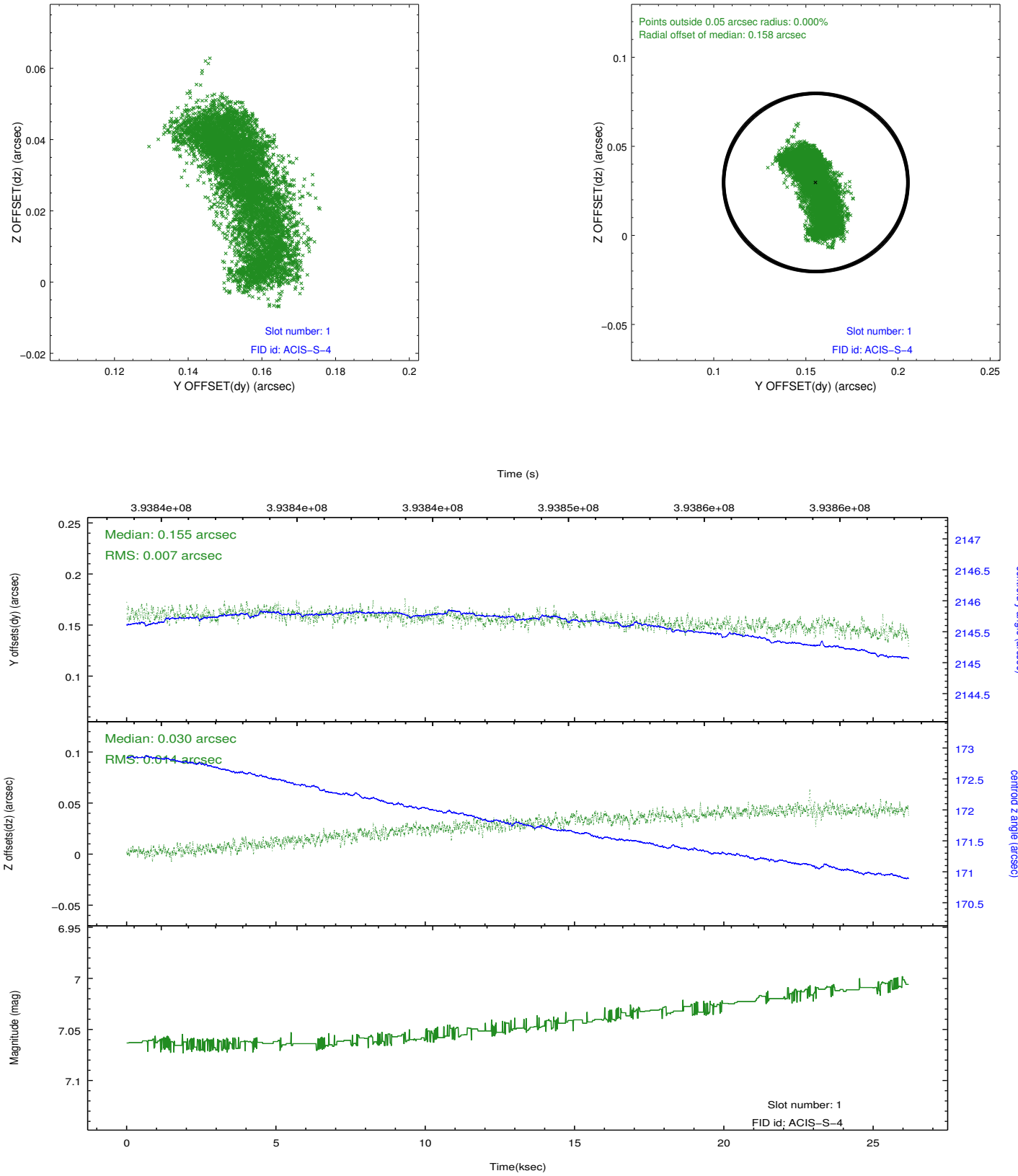


## 2.5 FID Slots

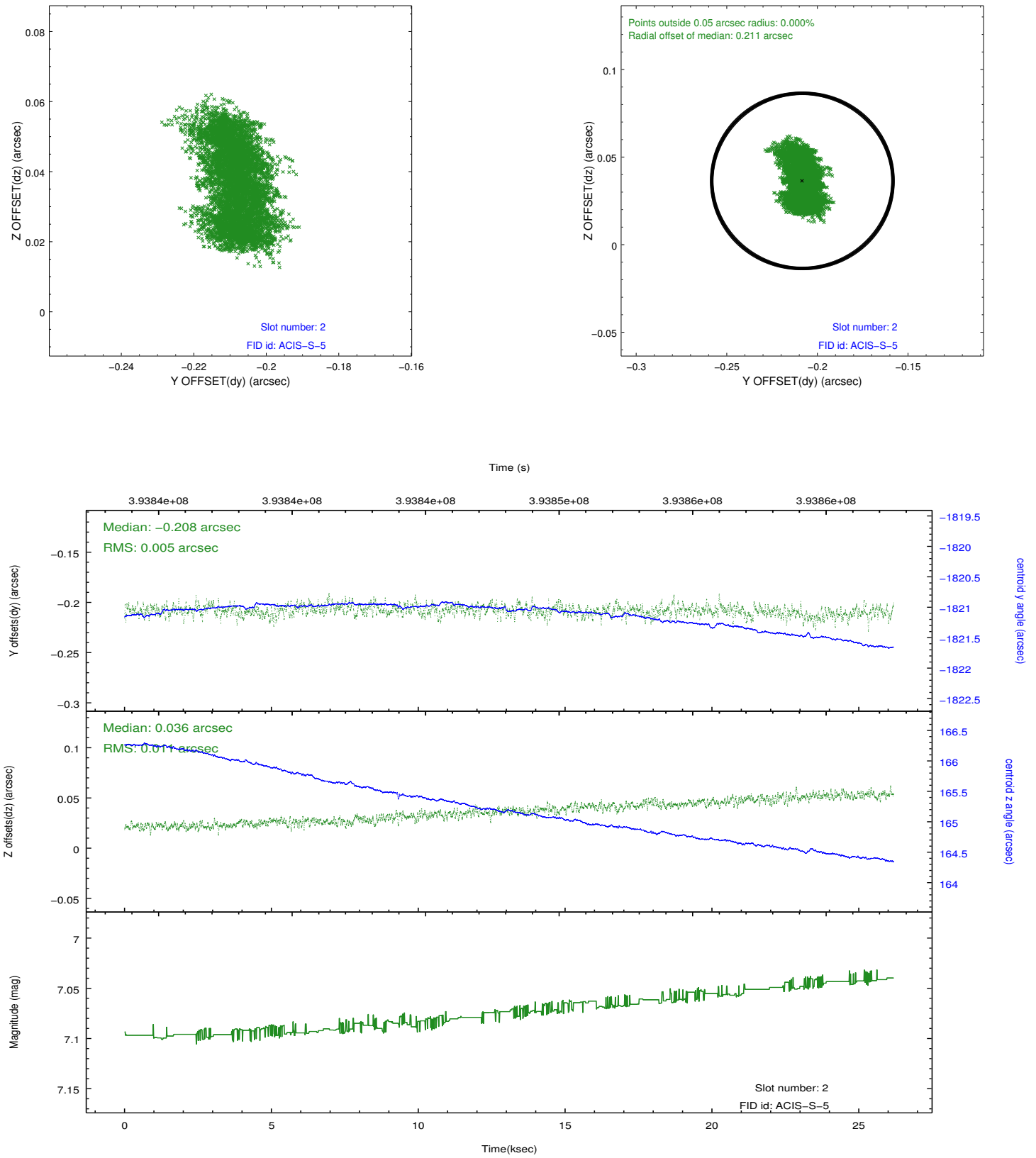
### 2.5.1 Slot 0



## 2.5.2 Slot 1



### 2.5.3 Slot 2



## A Summary

### A.1 Status

V&V Scientist	Jen Lauer
V&V Date (YYYY-MM-DD)	2012.07.05
V&V Edition	1
V&V Disposition and Status	OK
V&V Charge Time	26.063799556077

### A.2 Comments