

V&V Reference Report

L2 ASCDS Version : 8.4.5

Observation 11373 - L2 Version 2
Chandra X-Ray Center

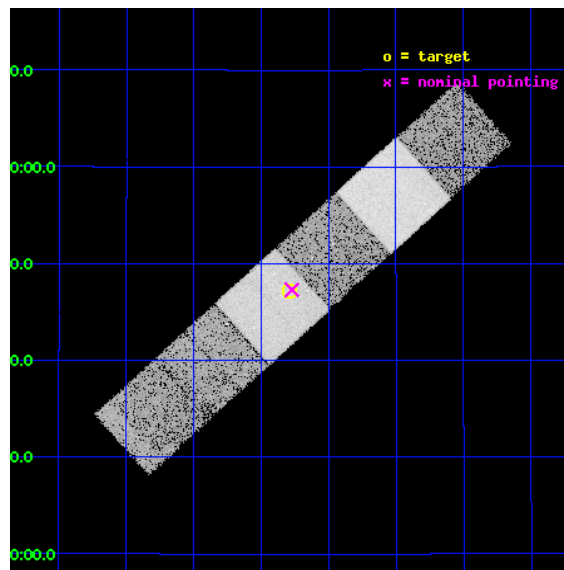
L2 Processing Date : Jun 24 2012

Contents

1	Front	2
2	OBI	3
2.1	OBI	3
2.1.1	Images	3
2.1.2	Bias	3
2.1.3	Parameters	4
2.1.4	Events	4
2.2	Compared Parameters	5
2.3	Aspect	6
2.4	Star Slots	9
2.4.1	Slot 3	9
2.4.2	Slot 4	10
2.4.3	Slot 5	11
2.4.4	Slot 6	12
2.4.5	Slot 7	13
2.5	FID Slots	14
2.5.1	Slot 0	14
2.5.2	Slot 1	15
2.5.3	Slot 2	16
A	Summary	17
A.1	Status	17
A.2	Comments	17

1 Front

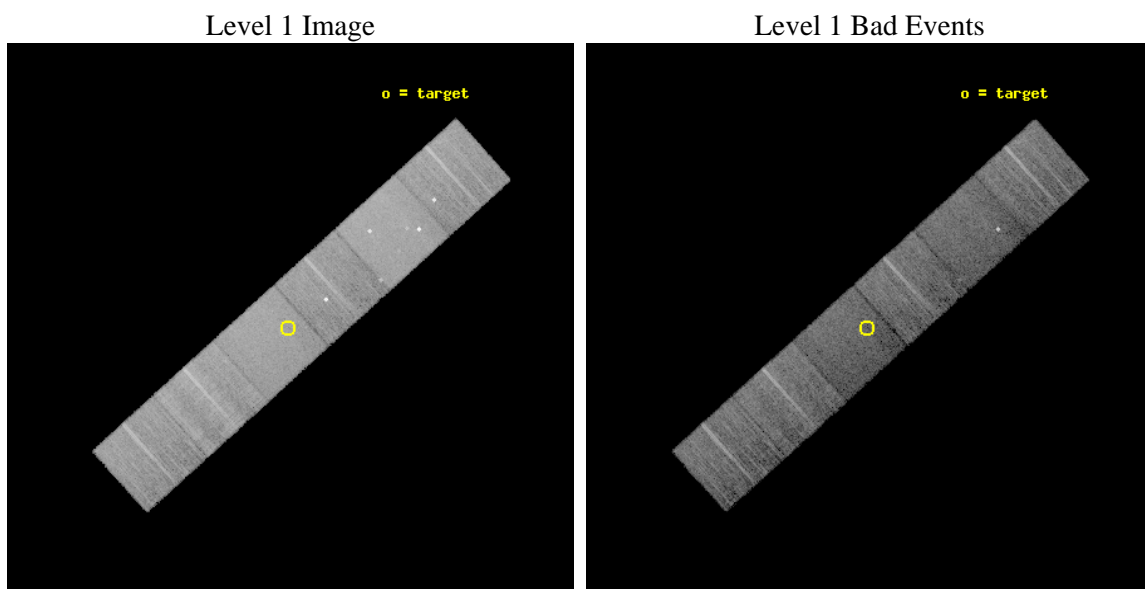
seq_num	600892	Sequence number
obs_id	11373	Observation id
title	Accretion onto nuclear black holes in early type galaxies: comparing field vs. clusters	Proposal title
observer	Elena Gallo	Principal investigator
object	PGC056821	Source name
dtcycle	0	
cycle	P	events from which exps? Prim/Second/Both
ra_targ	240.698	Observer's specified target RA [deg]
dec_targ	19.78743	Observer's specified target Dec [deg]
ra_nom	240.6929576039	Nominal RA [deg]
dec_nom	19.788333237983	Nominal Dec [deg]
roll_nom	137.84441509079	Nominal Roll [deg]
revision	2	Processing version of data
ontime	11577.59995693	Sum of GTIs [s]
livetime	11430.997415081	Livetime [s]
ontime4	11577.59995693	Sum of GTIs [s]
ontime5	11577.59995693	Sum of GTIs [s]
ontime6	11577.59995693	Sum of GTIs [s]
ontime7	11577.59995693	Sum of GTIs [s]
ontime8	11574.3589167	Sum of GTIs [s]
ontime9	11577.59995693	Sum of GTIs [s]
l2events	143142	Number of level 2 events



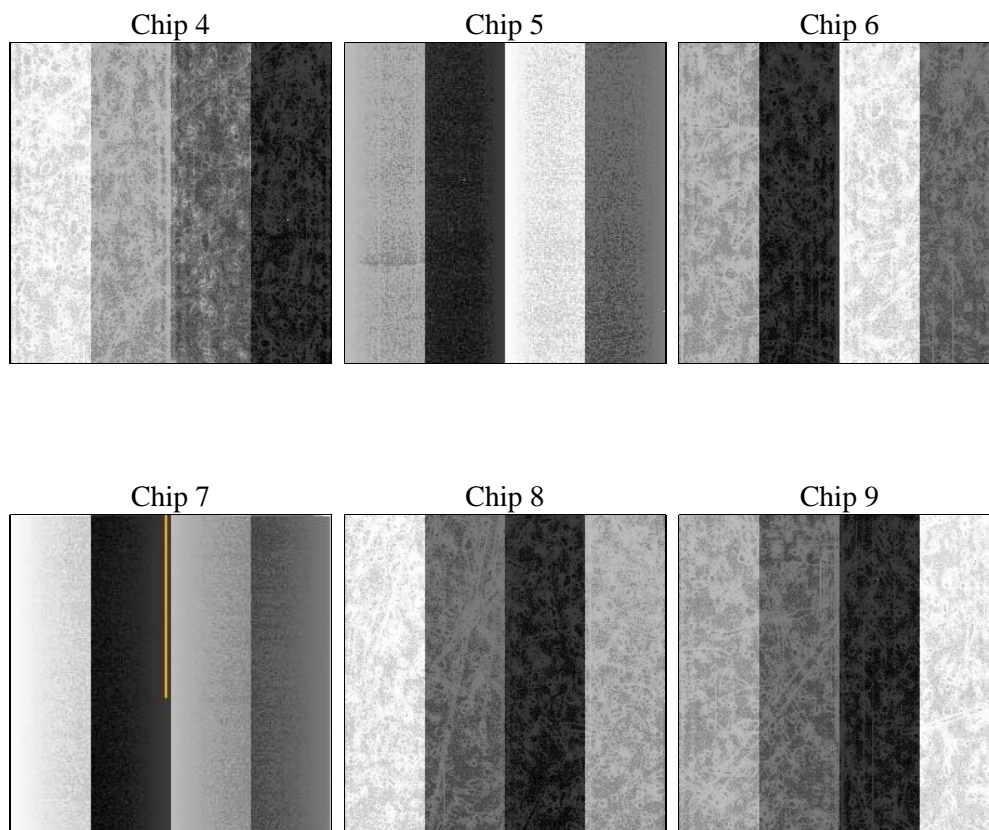
2 OBI

2.1 OBI

2.1.1 Images



2.1.2 Bias



2.1.3 Parameters

obi_num	0	Obi number	sched_exp_time	11400.000000	[s] Scheduled observation exposure time
ascdsver	8.4.5	Processing system revision	ontime	11577.59995693	Sum of GTIs [s]
caldsver	4.4.10	 	ontime4	11577.59995693	Sum of GTIs [s]
date	2012-06-24T20:48:53	Date and time of file creation	ontime5	11577.59995693	Sum of GTIs [s]
revision	2	Processing version of data	ontime6	11577.59995693	Sum of GTIs [s]
			ontime7	11577.59995693	Sum of GTIs [s]
			ontime8	11574.3589167	Sum of GTIs [s]
			ontime9	11577.59995693	Sum of GTIs [s]
			l1events	638838	Number of level 1 events

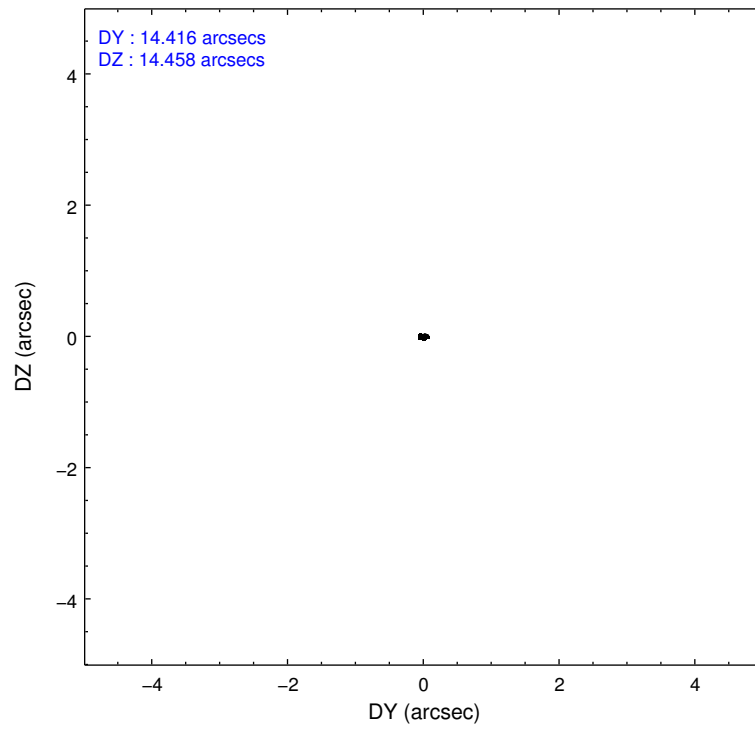
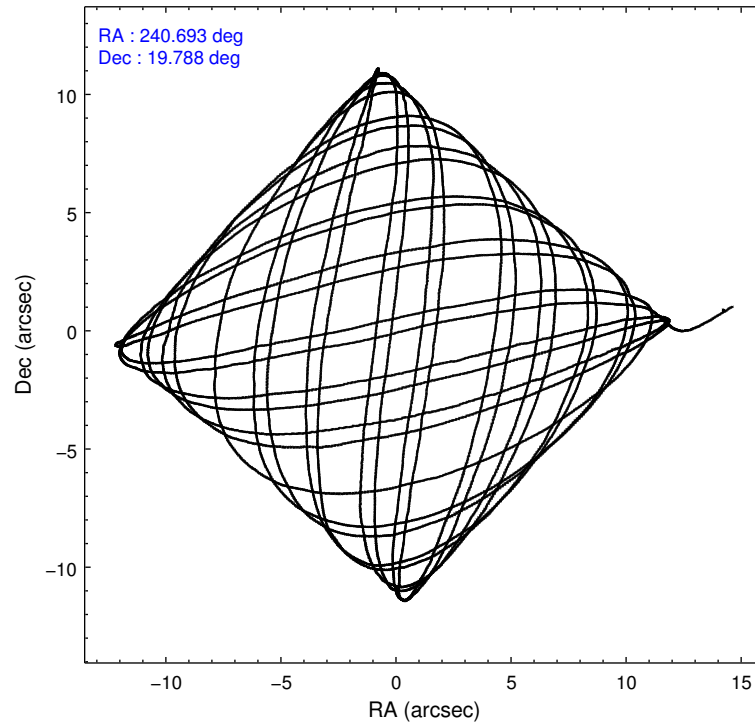
2.1.4 Events

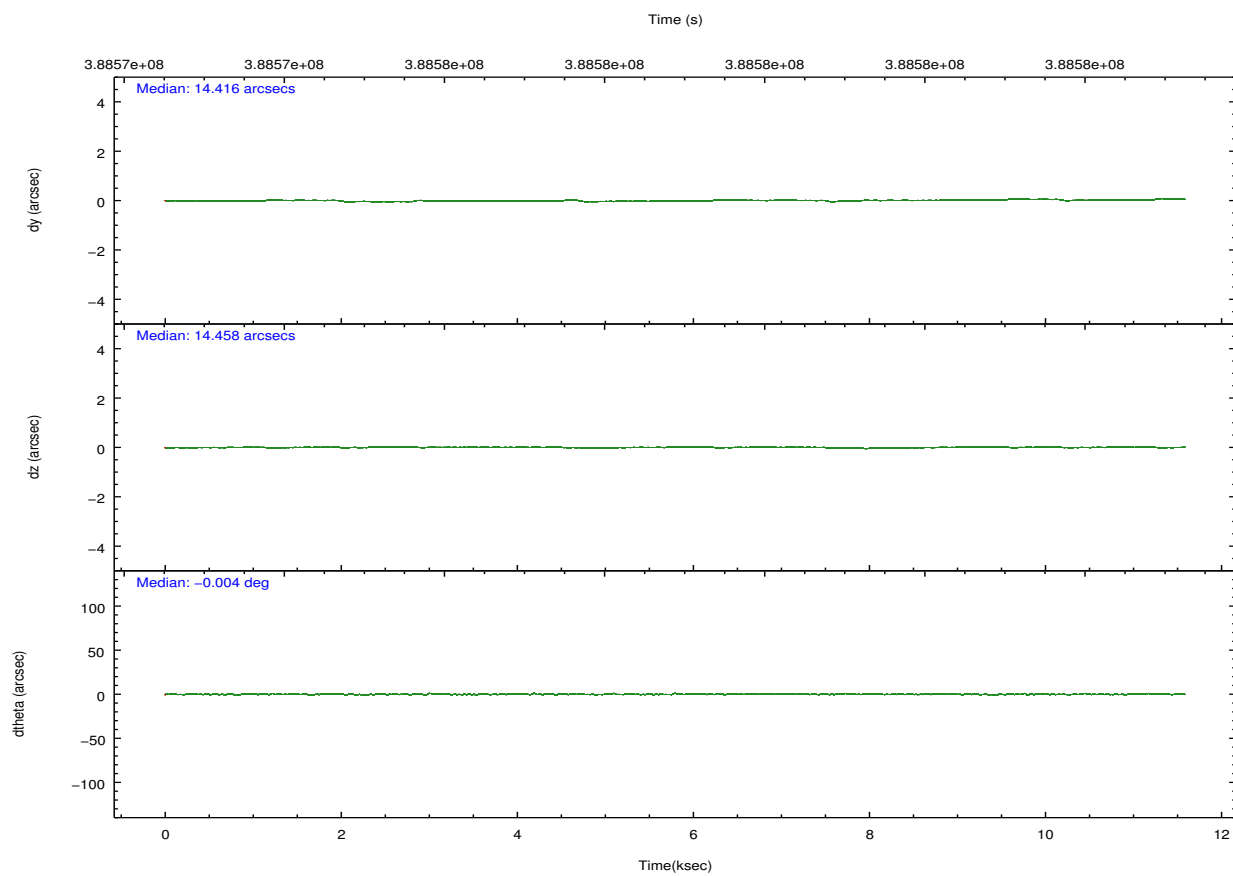
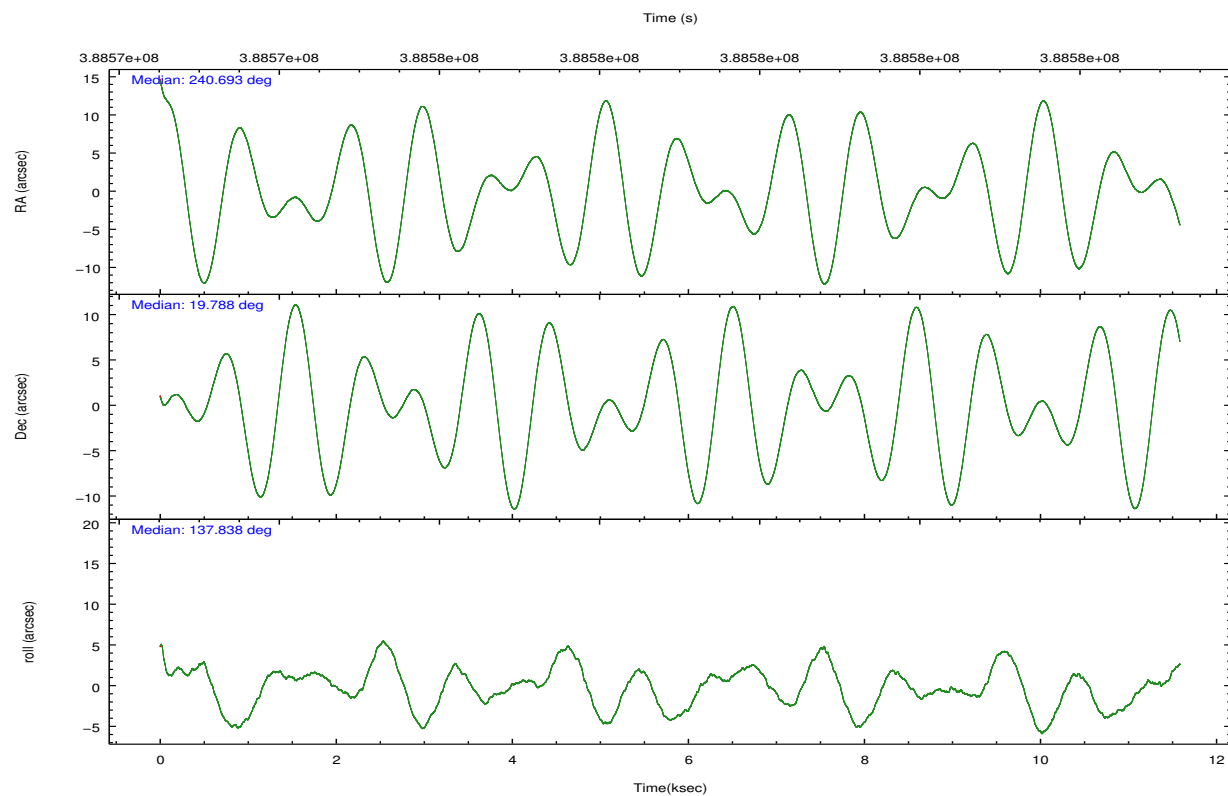
	ccd 4	ccd 5	ccd 6	ccd 7	ccd 8	ccd 9		ccd 4	ccd 5	ccd 6	ccd 7	ccd 8	ccd 9
level 1 events	101461	136107	91356	107801	114399	87714	grade 0 events	5793	8207	6930	4706	8608	3910
rejected events	89535	68544	78122	59730	86161	77247		5%	6%	7%	4%	7%	4%
rejected %	88%	50%	85%	55%	75%	88%	grade 1 events	102	1538	76	143	92	68
								0%	1%	0%	0%	0%	0%
							grade 2 events	2419	20514	2201	10000	6675	2237
								2%	15%	2%	9%	5%	2%
							grade 3 events	1069	2526	1077	4277	3116	1159
								1%	1%	1%	3%	2%	1%
							grade 4 events	1065	2353	974	4323	2924	1097
								1%	1%	1%	4%	2%	1%
							grade 5 events	3939	9859	3846	11178	5712	4396
								3%	7%	4%	10%	4%	5%
							grade 6 events	1743	34874	2237	25434	7430	2205
								1%	25%	2%	23%	6%	2%
							grade 7 events	85331	56236	74015	47740	79842	72642
								84%	41%	81%	44%	69%	82%

2.2 Compared Parameters

Parameter	Planned	Actual	Parameter	Planned	Actual
Instrument	ACIS	ACIS	Obspar format version number	7	7
Detector	ACIS-456789	ACIS-456789	Obspar file type	PREDICTED	ACTUAL
Grating	NONE	NONE	Obspar update status	NONE	UPDATED
Data mode	VFAINT	VFAINT	CCD I0 on	N	N
Observation mode	POINTING	POINTING	CCD I1 on	N	N
[deg] Pointing RA	240.721418	240.6929576039043	CCD I2 on	N	N
[deg] Pointing Dec	19.782916	19.78833323798317	CCD I3 on	N	N
[deg] Pointing Roll	137.678151	137.8444150907901	CCD S0 on	O1	Y
[mm] SIM focus pos	-0.684267	-0.6828225247311905	CCD S1 on	Y	Y
[mm] SIM defocus	0	0.001444936568705701	CCD S2 on	Y	Y
[mm] SIM translation stage pos	-190.132523	-190.1400660498719	CCD S3 on	Y	Y
[mm] SIM translation stage offset	0	0.00754346686406393	CCD S4 on	Y	Y
[s] Observation start time (MET)	388573272.184000	388572124.36278	CCD S5 on	O2	Y
Observation start date	2010-04-25T09:00:06	2010-04-25T08:42:04	Number of optional ACIS chips dropped	0	0
[s] Observation end time (MET)	388584672.184000	388585520.08846	On-chip summing requested	N	N
Observation end date	2010-04-25T12:10:06	2010-04-25T12:25:20	Subarray requested	NONE	NONE
Read mode	TIMED	TIMED	Alternating exposures requested	N	N
			[s] Primary exposure time	0.000000	3.2

2.3 Aspect



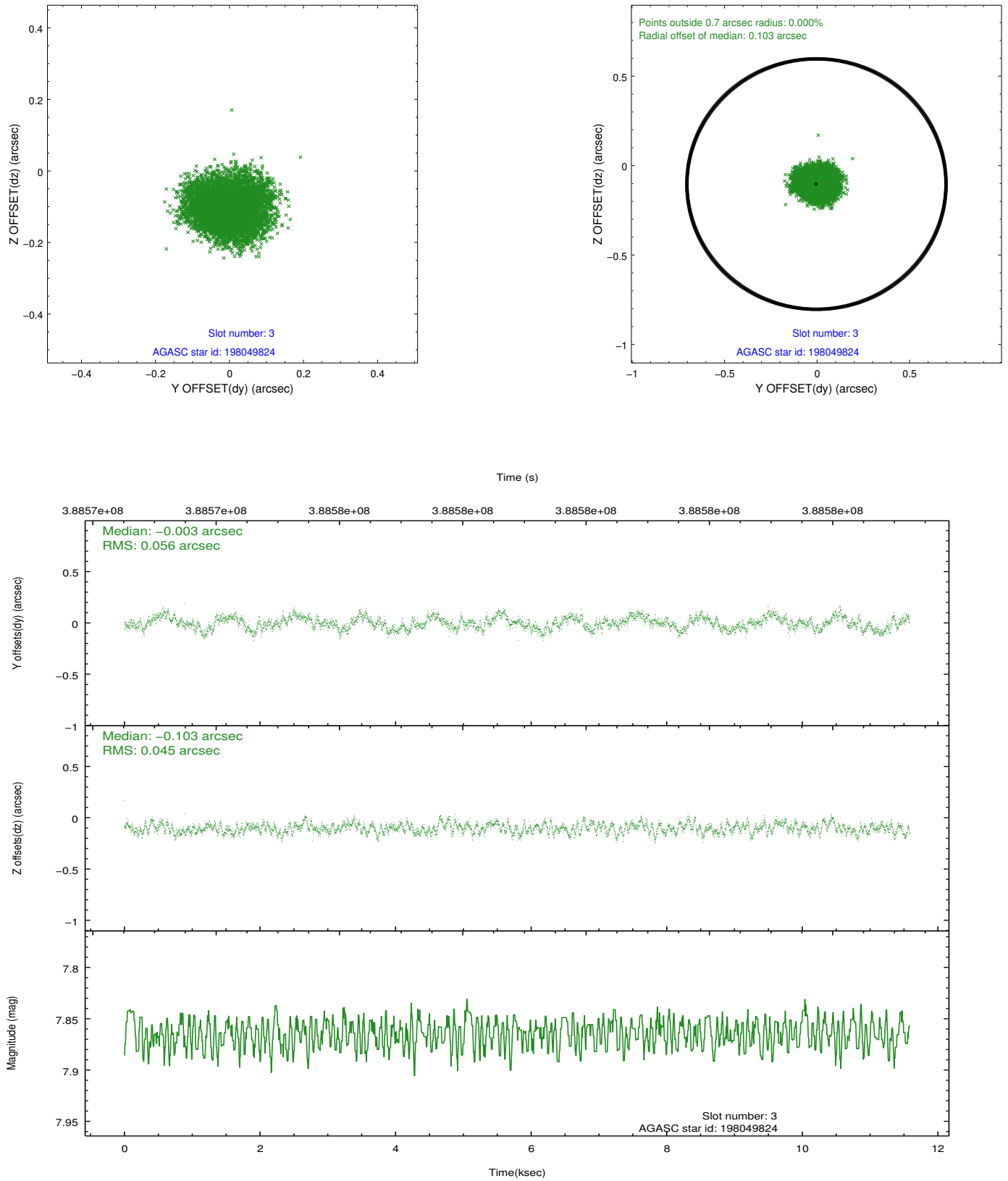


Slot Statistics

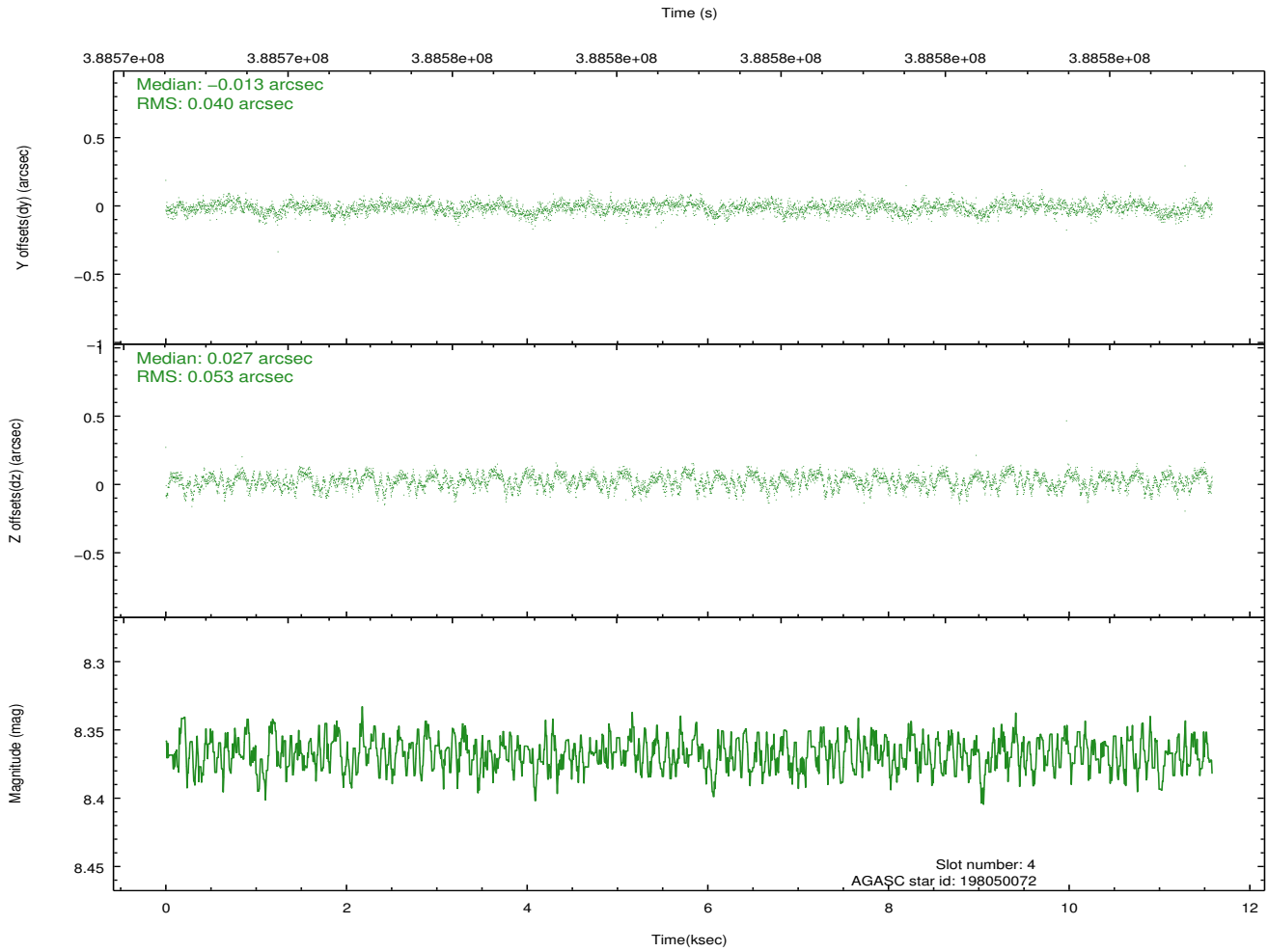
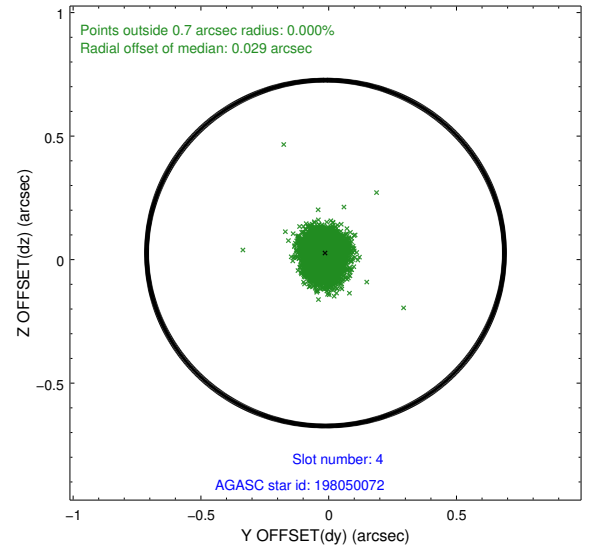
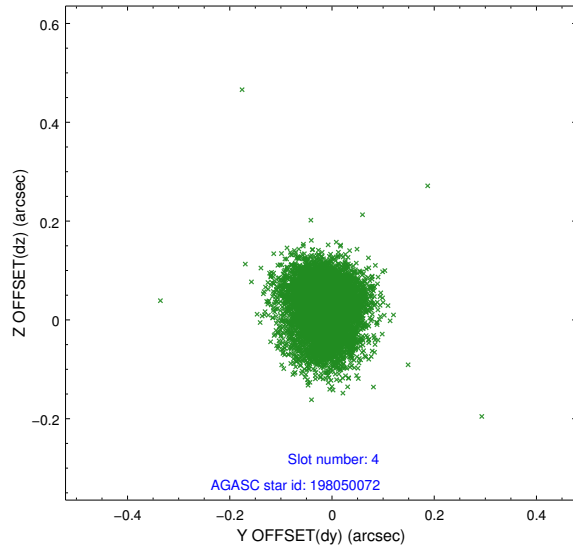
slot	status	id	mag	n_pts	med_dy	med_dz	dr1	dr2	ra	dec	mean_y	mean_z
0	FID	ACIS-S-2	6.99	2826	-0.077	-0.040	0.007	0.011	0.000000	0.000000	-767.43	-1735.87
1	FID	ACIS-S-4	7.07	2825	0.194	0.048	0.005	0.009	0.000000	0.000000	2145.90	172.27
2	FID	ACIS-S-5	7.11	2826	-0.148	0.001	0.006	0.010	0.000000	0.000000	-1819.80	166.37
3	GUIDE	198049824	7.86	5652	-0.003	-0.103	0.078	0.120	240.612031	19.630075	-95.50	656.60
4	GUIDE	198050072	8.37	5646	-0.013	0.027	0.070	0.111	240.838962	20.223627	775.12	-1439.94
5	GUIDE	198050136	9.07	5646	0.077	0.160	0.081	0.131	241.536691	19.717412	-2195.79	-1689.98
6	GUIDE	198050704	9.57	5572	0.113	0.180	0.104	0.164	241.541146	19.820030	-1958.03	-1972.89
7	GUIDE	198057632	9.06	5650	-0.170	-0.261	0.092	0.147	240.288902	19.365299	74.61	2099.01

2.4 Star Slots

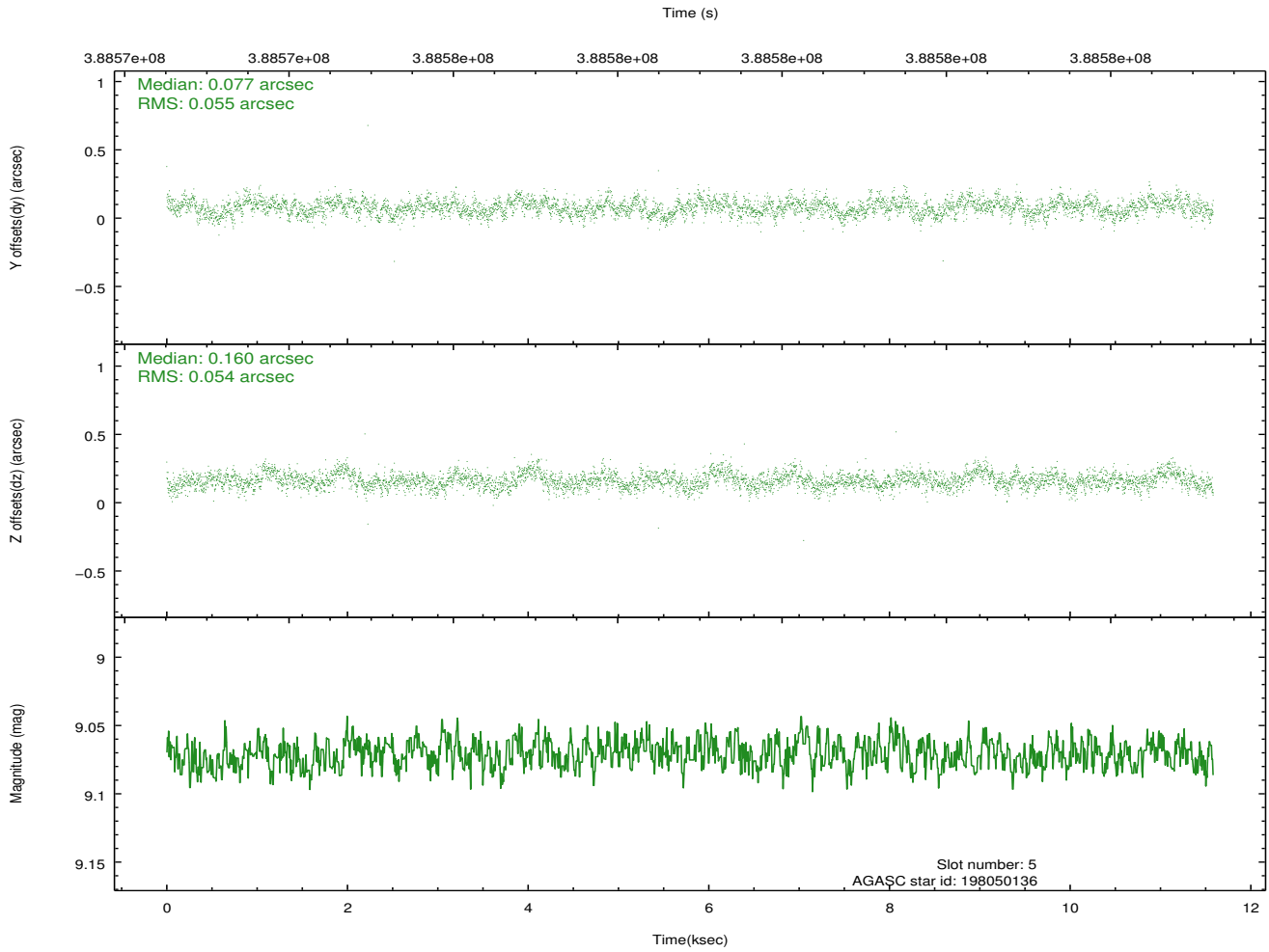
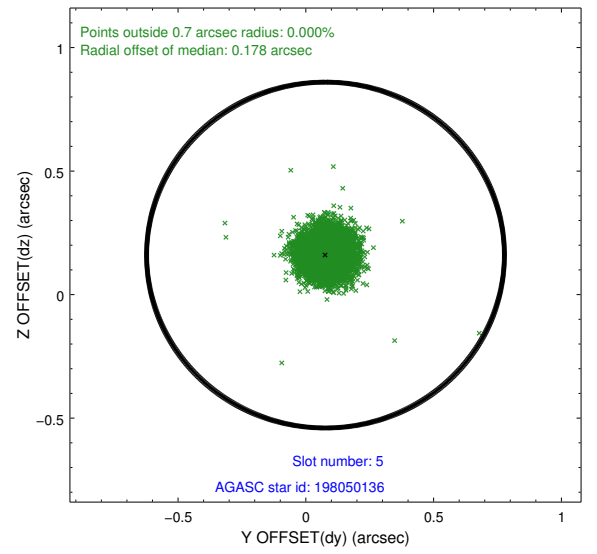
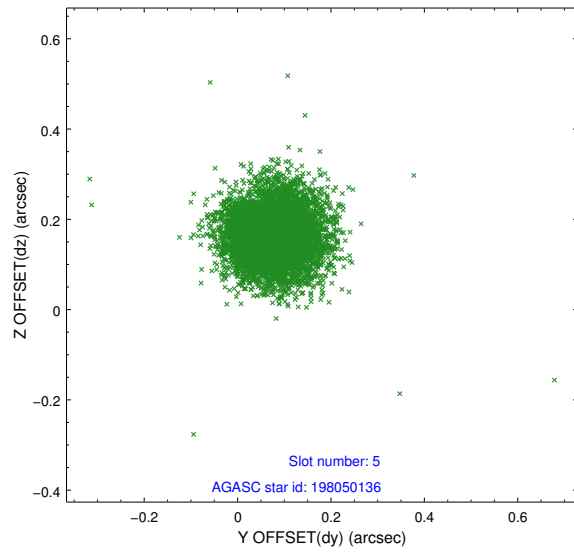
2.4.1 Slot 3



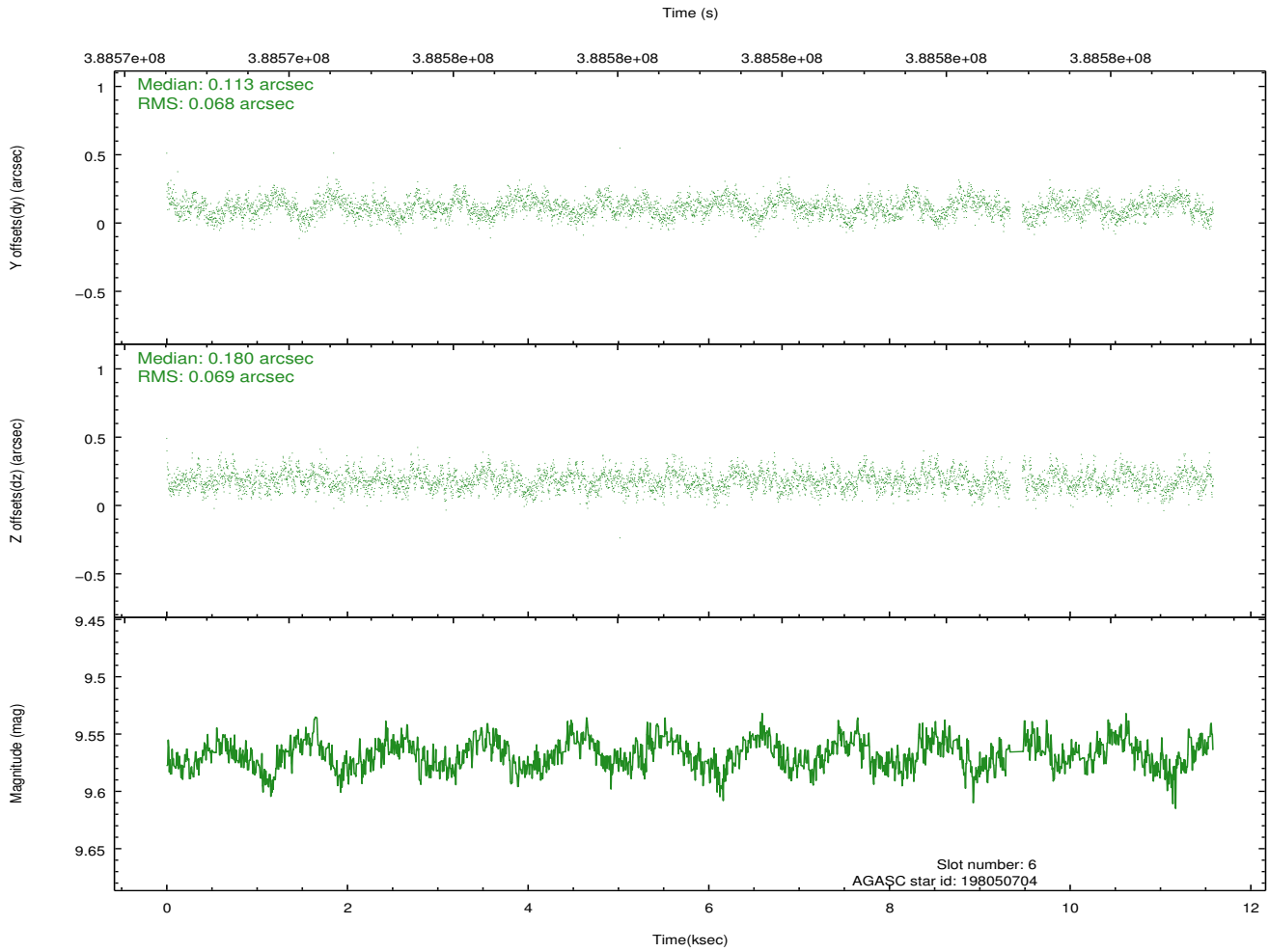
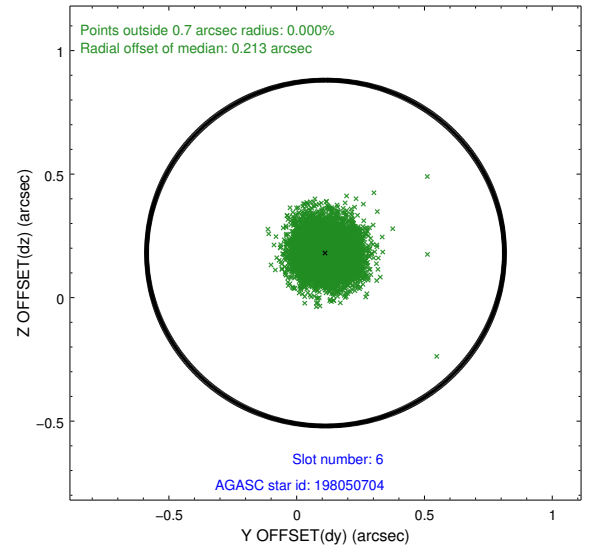
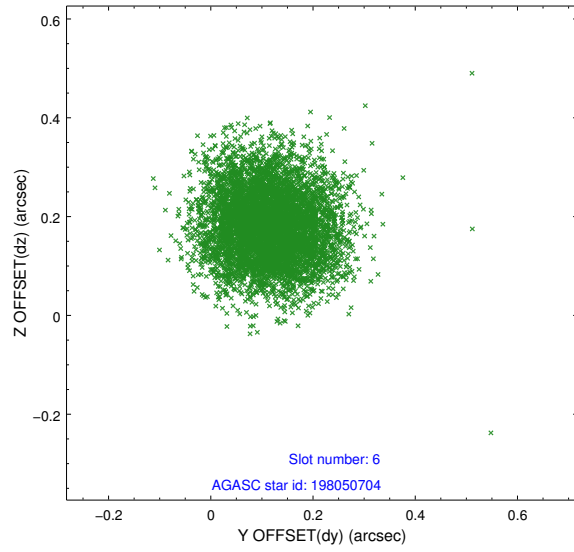
2.4.2 Slot 4



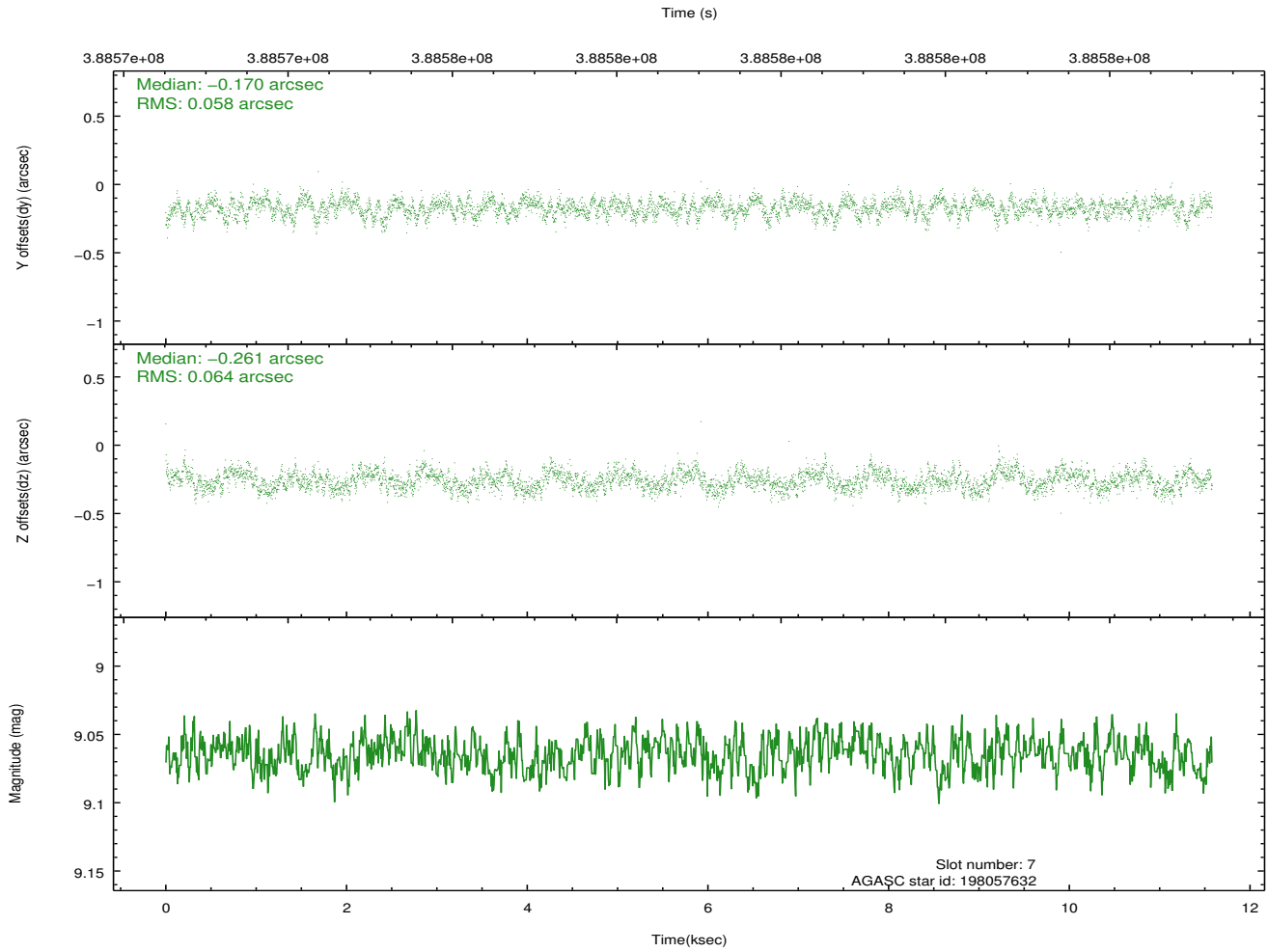
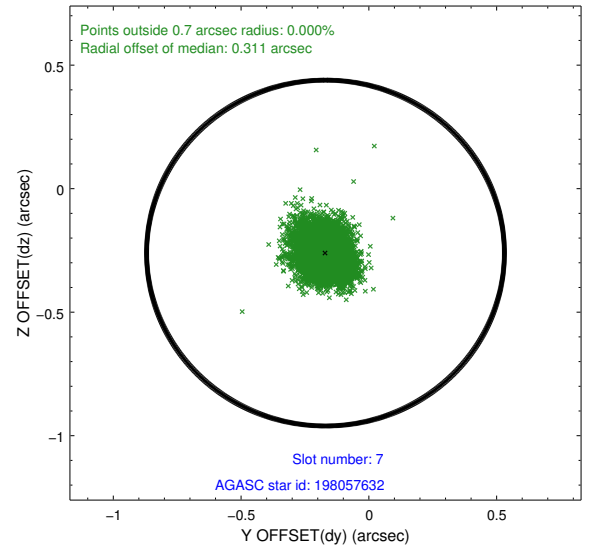
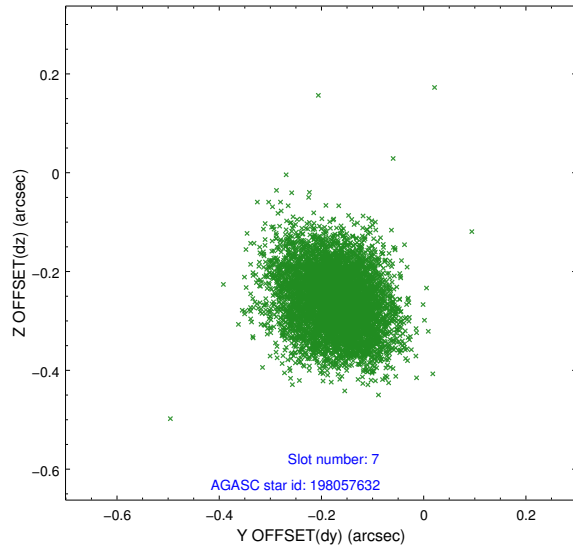
2.4.3 Slot 5



2.4.4 Slot 6

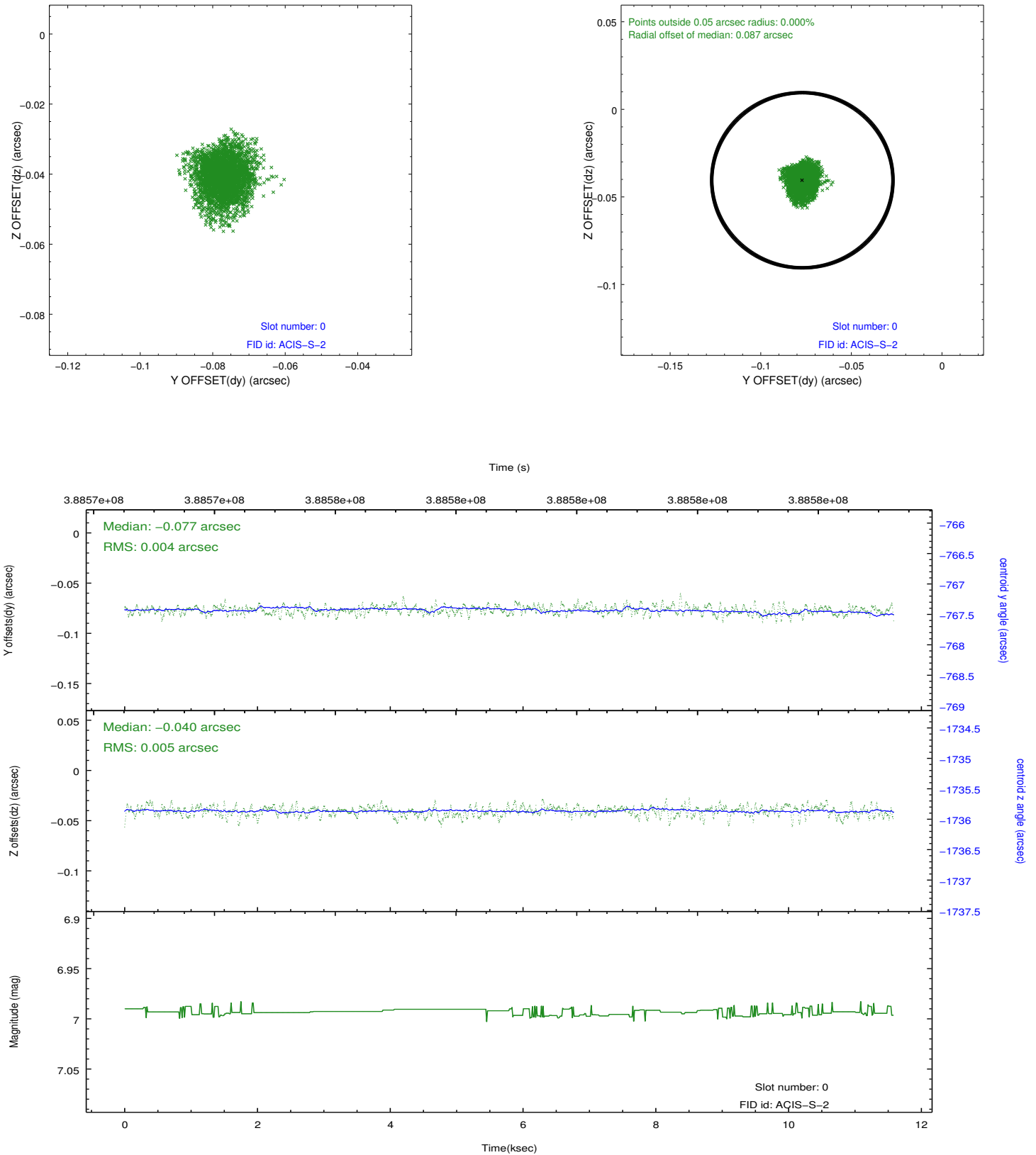


2.4.5 Slot 7

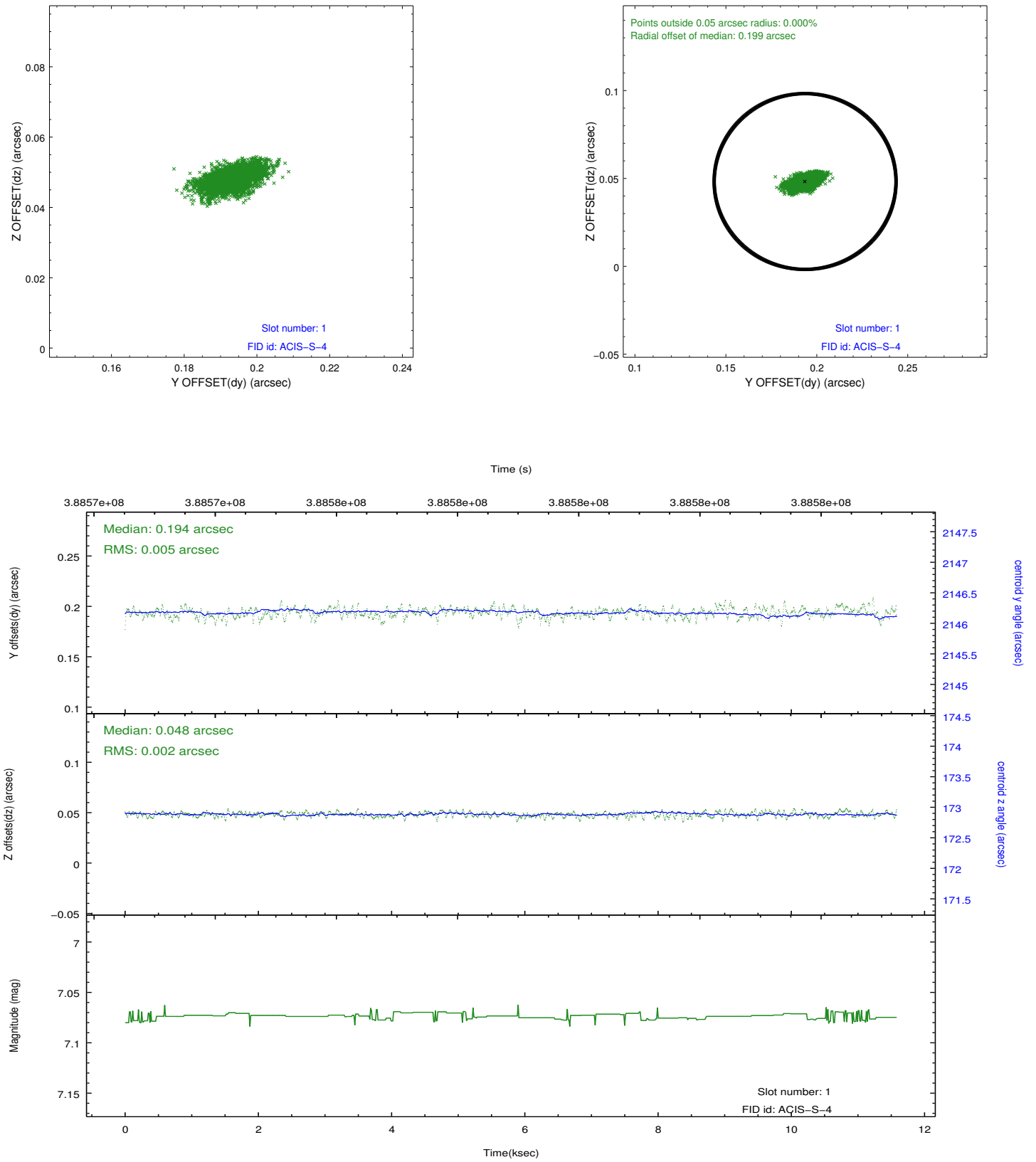


2.5 FID Slots

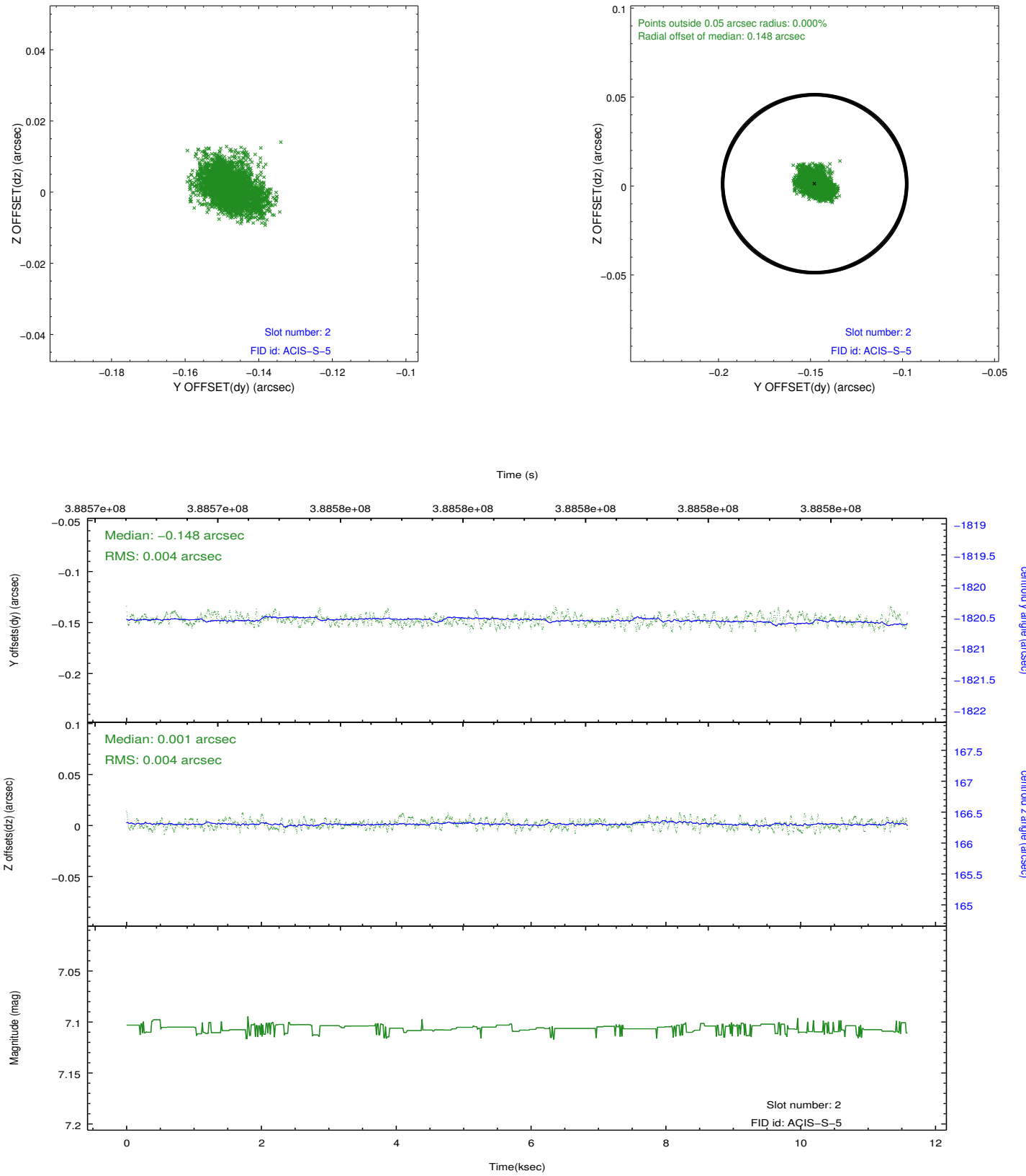
2.5.1 Slot 0



2.5.2 Slot 1



2.5.3 Slot 2



A Summary

A.1 Status

V&V Scientist	Beth Sundheim
V&V Date (YYYY-MM-DD)	2012.07.01
V&V Edition	1
V&V Disposition and Status	OK
V&V Charge Time	11.57759995693

A.2 Comments