

V&V Reference Report

L2 ASCDS Version : 8.4.5

Observation 11363 - L2 Version 2
Chandra X-Ray Center

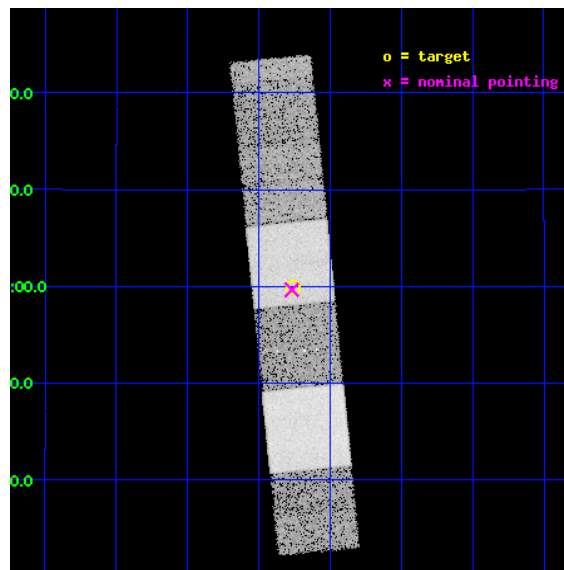
L2 Processing Date : Jul 2 2012

Contents

1	Front	2
2	OBI	3
2.1	OBI	3
2.1.1	Images	3
2.1.2	Bias	3
2.1.3	Parameters	4
2.1.4	Events	4
2.2	Compared Parameters	5
2.3	Aspect	6
2.4	Star Slots	9
2.4.1	Slot 3	9
2.4.2	Slot 4	10
2.4.3	Slot 5	11
2.4.4	Slot 7	12
2.5	FID Slots	13
2.5.1	Slot 0	13
2.5.2	Slot 1	14
2.5.3	Slot 2	15
A	Summary	16
A.1	Status	16
A.2	Comments	16

1 Front

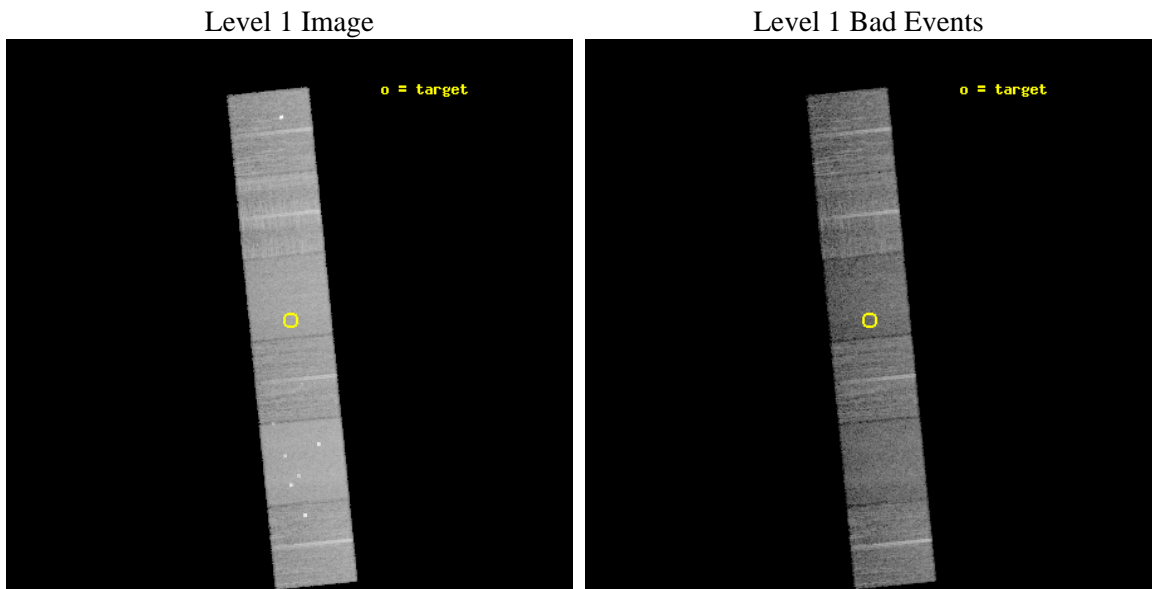
seq_num	600882	Sequence number
obs_id	11363	Observation id
title	Accretion onto nuclear black holes in early type galaxies: comparing field vs. clusters	Proposal title
observer	Elena Gallo	Principal investigator
object	NGC6017	Source name
dtcycle	0	
cycle	P	events from which exps? Prim/Second/Both
ra_targ	239.315	Observer's specified target RA [deg]
dec_targ	5.99836	Observer's specified target Dec [deg]
ra_nom	239.31712505004	Nominal RA [deg]
dec_nom	5.9940222082791	Nominal Dec [deg]
roll_nom	264.2817431003	Nominal Roll [deg]
revision	2	Processing version of data
ontime	12342.358983815	Sum of GTIs [s]
livetime	12186.072602685	Livetime [s]
ontime4	12345.599954069	Sum of GTIs [s]
ontime5	12345.599954069	Sum of GTIs [s]
ontime6	12342.359093249	Sum of GTIs [s]
ontime7	12342.358983815	Sum of GTIs [s]
ontime8	12345.599954069	Sum of GTIs [s]
ontime9	12345.599954069	Sum of GTIs [s]
l2events	154243	Number of level 2 events



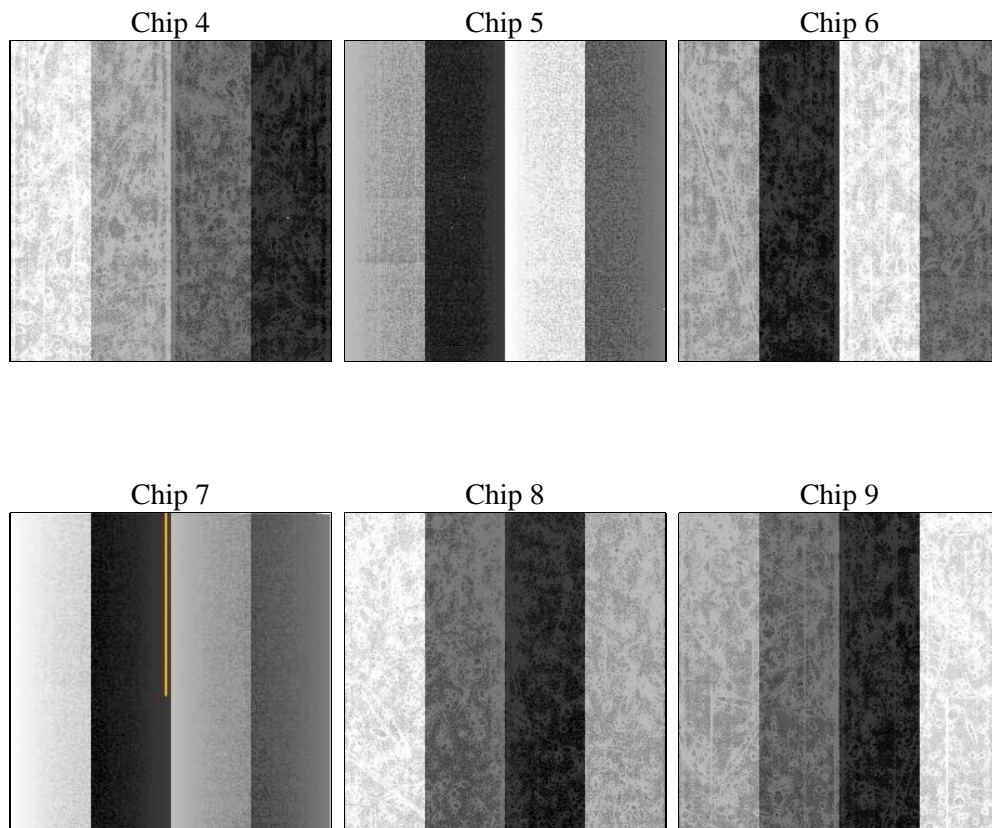
2 OBI

2.1 OBI

2.1.1 Images



2.1.2 Bias



2.1.3 Parameters

obi_num	0	Obi number	sched_exp_time	12300.000000	[s] Scheduled observation exposure time
ascdsver	8.4.5	Processing system revision	ontime	12342.358983815	Sum of GTIs [s]
caldsver	4.5.0	 	ontime4	12345.599954069	Sum of GTIs [s]
date	2012-07-02T18:12:46	Date and time of file creation	ontime5	12345.599954069	Sum of GTIs [s]
revision	2	Processing version of data	ontime6	12342.359093249	Sum of GTIs [s]
			ontime7	12342.358983815	Sum of GTIs [s]
			ontime8	12345.599954069	Sum of GTIs [s]
			ontime9	12345.599954069	Sum of GTIs [s]
			l1events	677286	Number of level 1 events

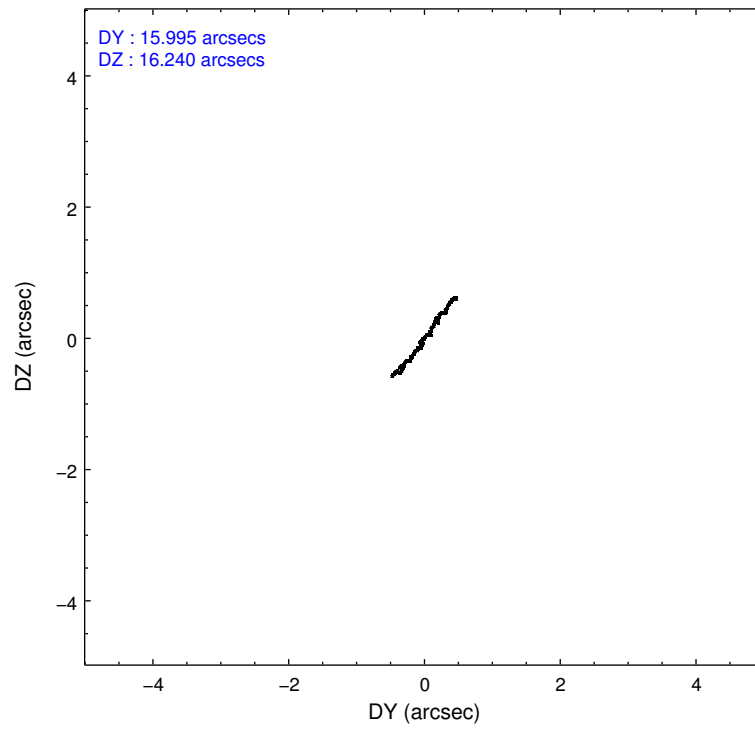
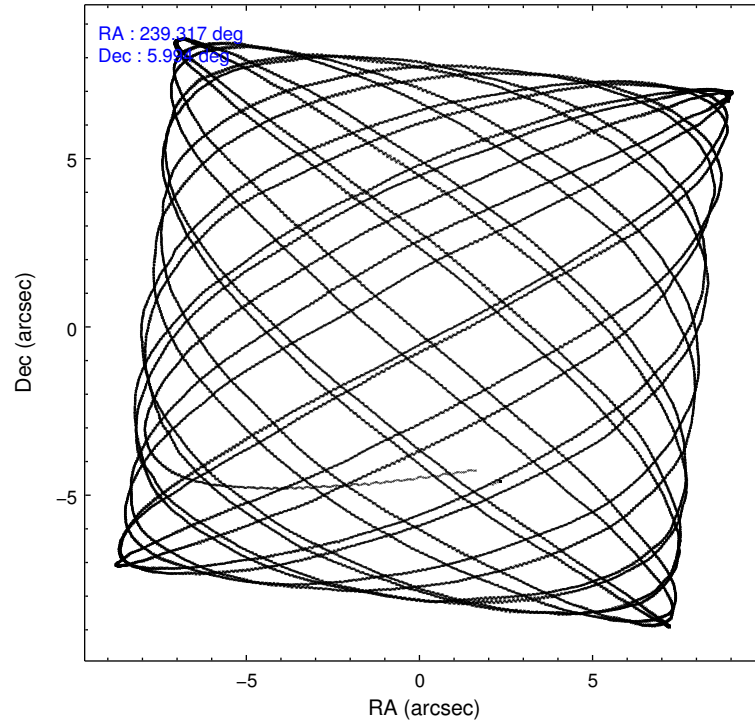
2.1.4 Events

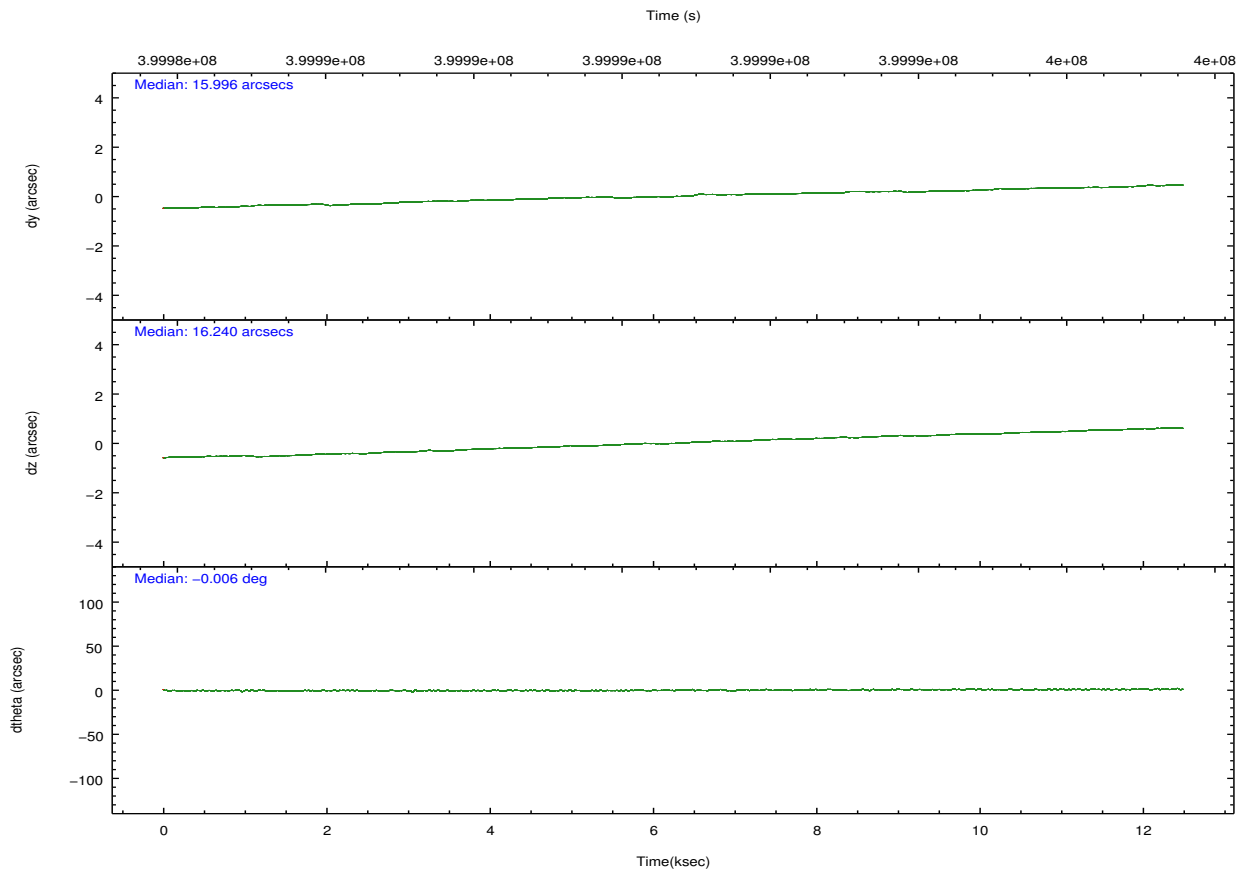
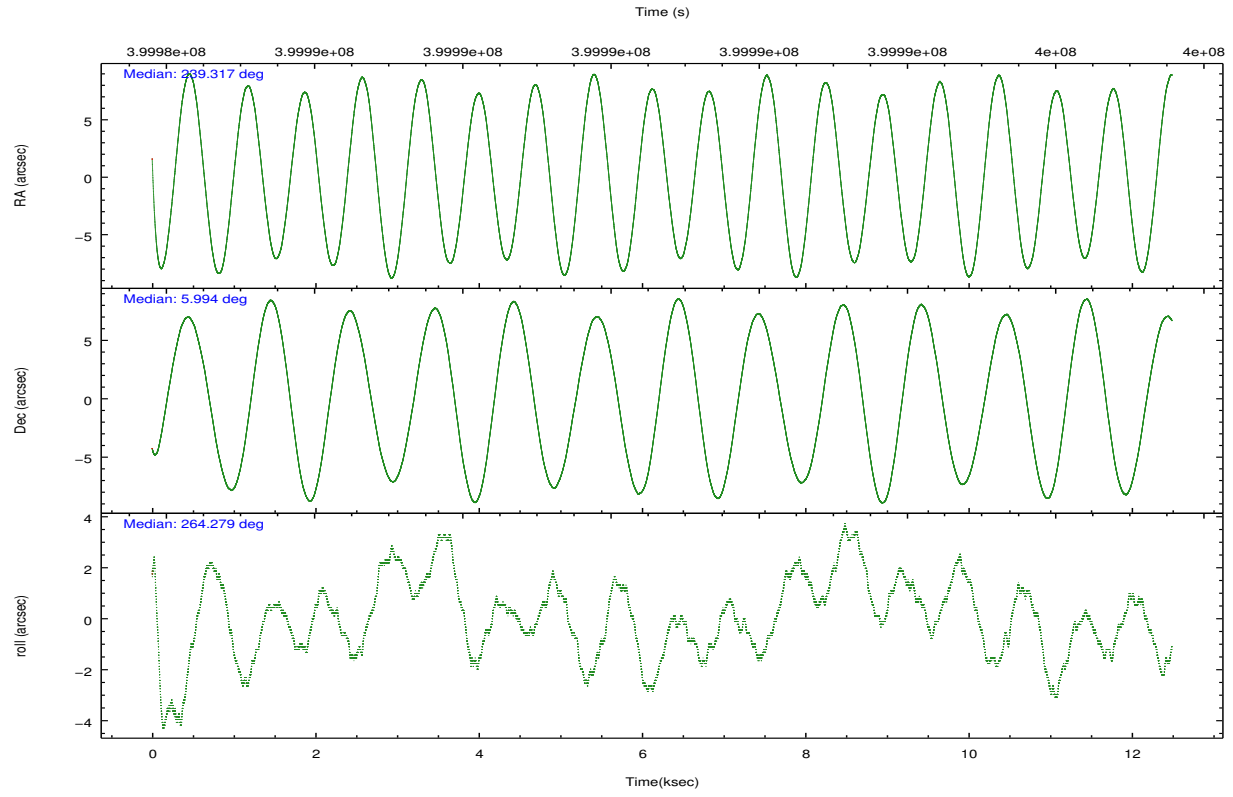
	ccd 4	ccd 5	ccd 6	ccd 7	ccd 8	ccd 9		ccd 4	ccd 5	ccd 6	ccd 7	ccd 8	ccd 9
level 1 events	107400	142407	95947	113615	123144	94773	grade 0 events	7242	9785	4087	4978	9821	7775
rejected events	93496	69758	84942	62271	90423	80117		6%	6%	4%	4%	7%	8%
rejected %	87%	48%	88%	54%	73%	84%	grade 1 events	102	283	49	152	97	95
								0%	0%	0%	0%	0%	0%
							grade 2 events	2598	20949	2357	10525	7590	2387
								2%	14%	2%	9%	6%	2%
							grade 3 events	1173	2684	1174	4536	3418	1190
								1%	1%	1%	3%	2%	1%
							grade 4 events	1112	2578	1075	4598	3235	1085
								1%	1%	1%	4%	2%	1%
							grade 5 events	4117	10699	4049	11689	6172	4629
								3%	7%	4%	10%	5%	4%
							grade 6 events	1786	36672	2313	26715	8690	2224
								1%	25%	2%	23%	7%	2%
							grade 7 events	89270	58757	80843	50422	84121	75388
								83%	41%	84%	44%	68%	79%

2.2 Compared Parameters

Parameter	Planned	Actual	Parameter	Planned	Actual
Instrument	ACIS	ACIS	Obspar format version number	7	7
Detector	ACIS-456789	ACIS-456789	Obspar file type	PREDICTED	ACTUAL
Grating	NONE	NONE	Obspar update status	NONE	UPDATED
Data mode	VFAINT	VFAINT	CCD I0 on	N	N
Observation mode	POINTING	POINTING	CCD I1 on	N	N
[deg] Pointing RA	239.305486	239.3171250500357	CCD I2 on	N	N
[deg] Pointing Dec	6.018771	5.994022208279125	CCD I3 on	N	N
[deg] Pointing Roll	264.126333	264.2817431002987	CCD S0 on	O1	Y
[mm] SIM focus pos	-0.684267	-0.6828225247311905	CCD S1 on	Y	Y
[mm] SIM defocus	0	0.001444936568705701	CCD S2 on	Y	Y
[mm] SIM translation stage pos	-190.132523	-190.1425803651734	CCD S3 on	Y	Y
[mm] SIM translation stage offset	0	0.01005778216563158	CCD S4 on	Y	Y
[s] Observation start time (MET)	399984632.184000	399983224.44533	CCD S5 on	O2	Y
Observation start date	2010-09-04T10:49:26	2010-09-04T10:27:04	Number of optional ACIS chips dropped	0	0
[s] Observation end time (MET)	399996932.184000	399998090.53359	On-chip summing requested	N	N
Observation end date	2010-09-04T14:14:26	2010-09-04T14:34:50	Subarray requested	NONE	NONE
Read mode	TIMED	TIMED	Alternating exposures requested	N	N
			[s] Primary exposure time	0.000000	3.2

2.3 Aspect



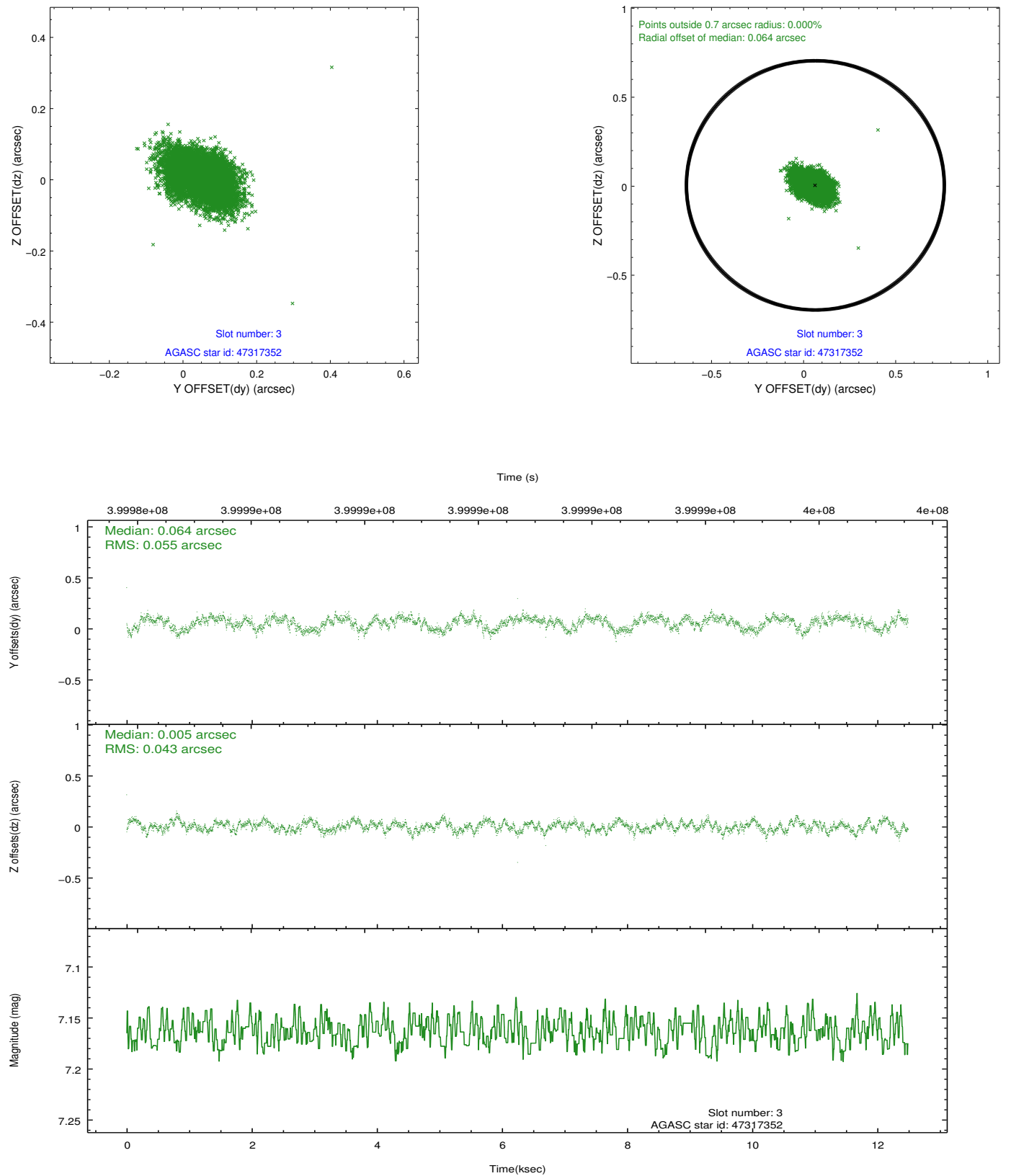


Slot Statistics

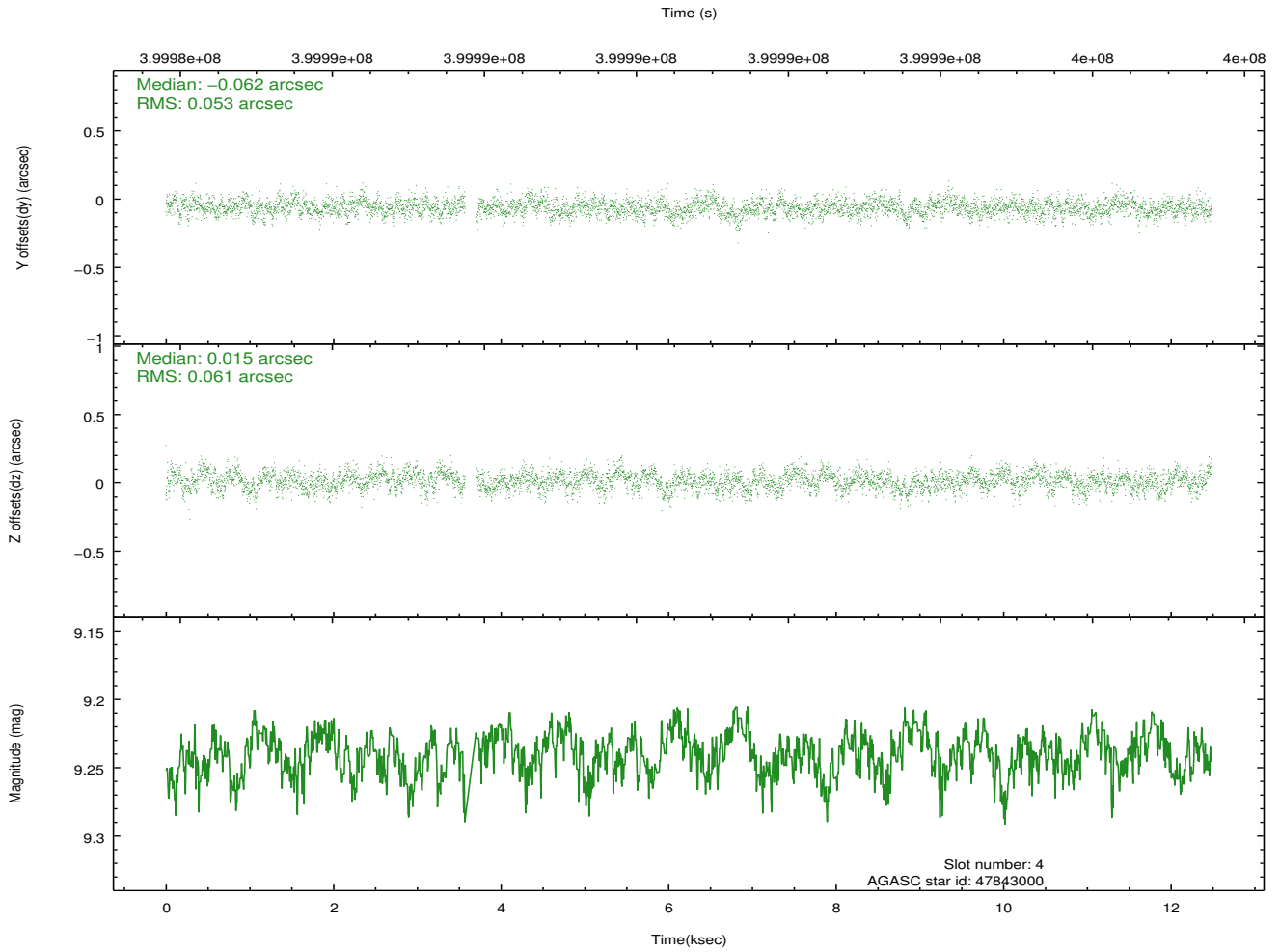
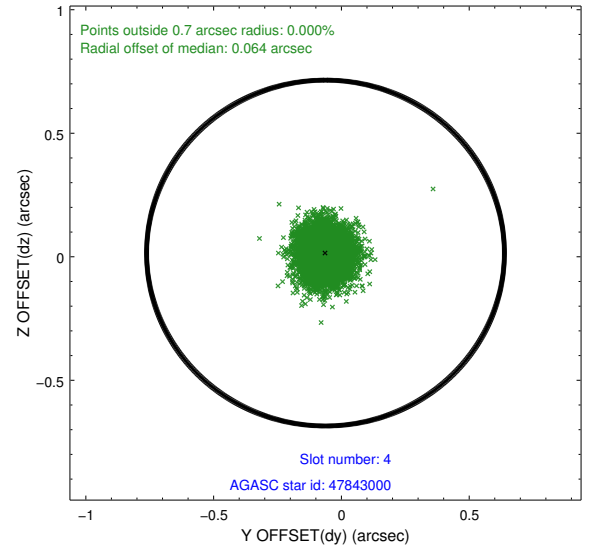
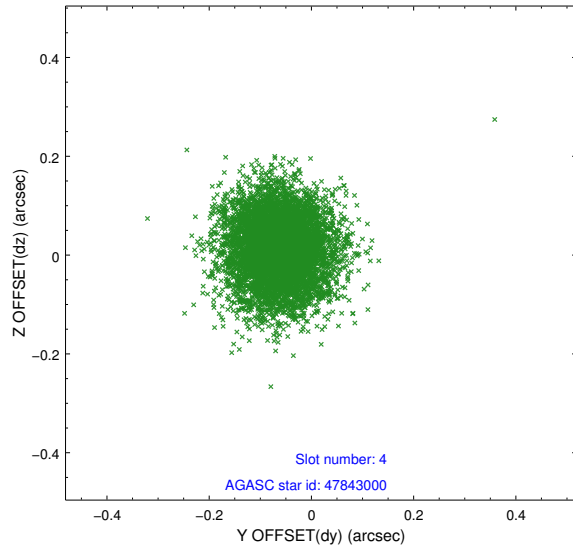
slot	status	id	mag	n_pts	med_dy	med_dz	dr1	dr2	ra	dec	mean_y	mean_z
0	FID	ACIS-S-1	6.99	3047	0.078	-0.095	0.022	0.037	0.000000	0.000000	927.12	-1733.33
1	FID	ACIS-S-5	7.04	3047	-0.112	0.047	0.018	0.025	0.000000	0.000000	-1821.85	163.95
2	FID	ACIS-S-6	7.15	3047	0.013	0.054	0.020	0.030	0.000000	0.000000	392.18	808.37
3	GUIDE	47317352	7.16	6094	0.064	0.005	0.073	0.117	238.692925	5.587125	1769.93	-2024.12
4	GUIDE	47843000	9.24	6028	-0.062	0.015	0.086	0.141	238.828630	6.636736	-2038.47	-1924.40
5	GUIDE	47845392	9.29	6021	-0.043	-0.066	0.129	0.205	239.736220	5.655805	1141.38	1668.44
6	UNUSED		0.00	0	0.000	0.000	0.000	0.000	0.000000	0.000000	0.00	0.00
7	GUIDE	47847168	7.24	6093	0.043	0.044	0.069	0.117	239.172398	5.911087	435.66	-433.68

2.4 Star Slots

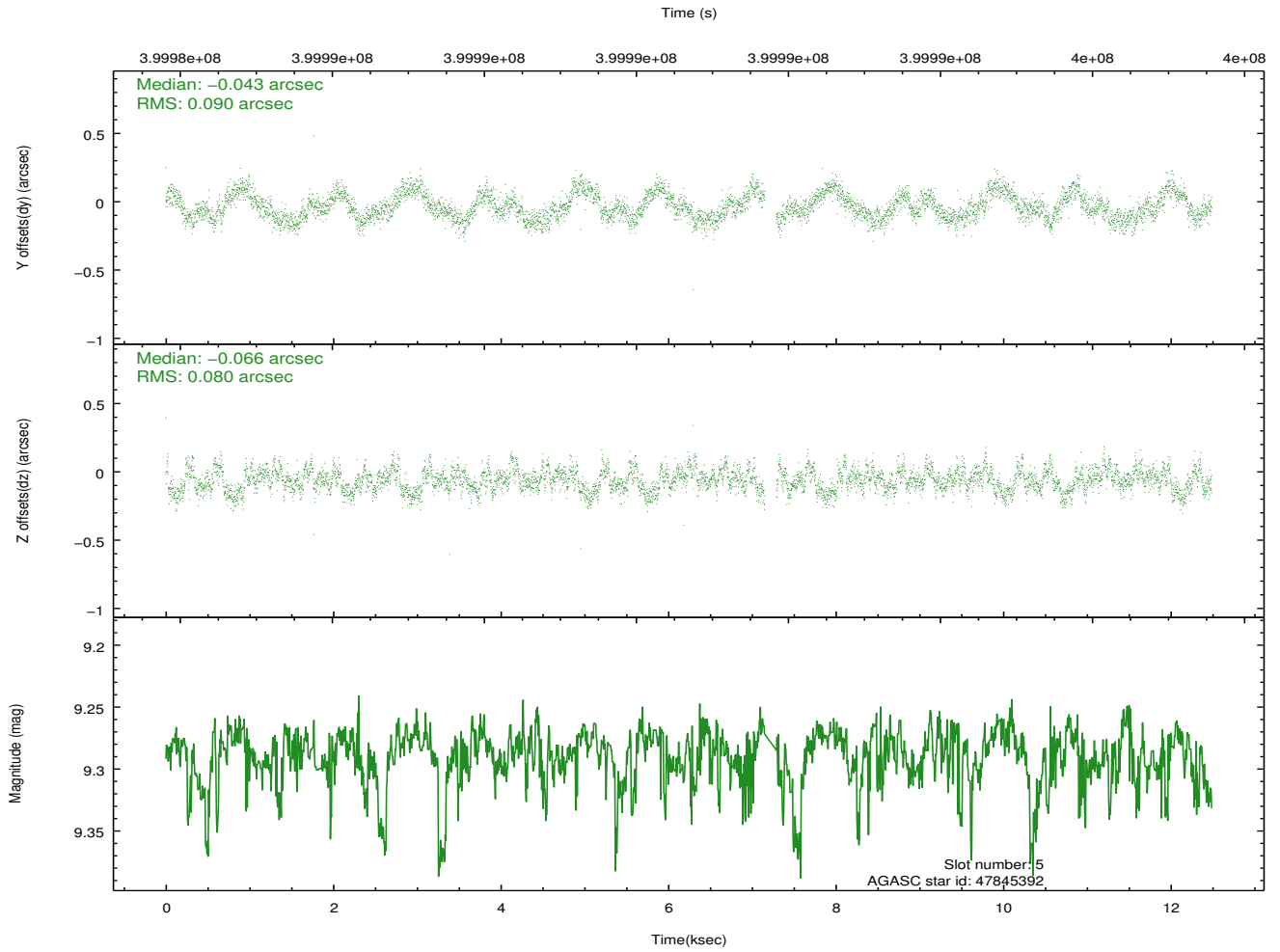
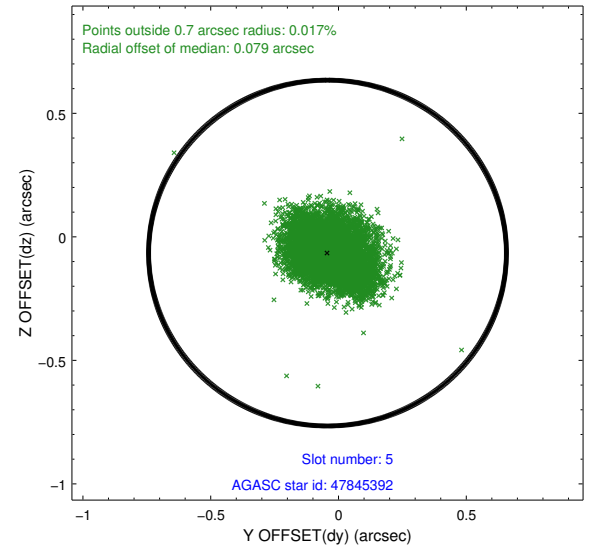
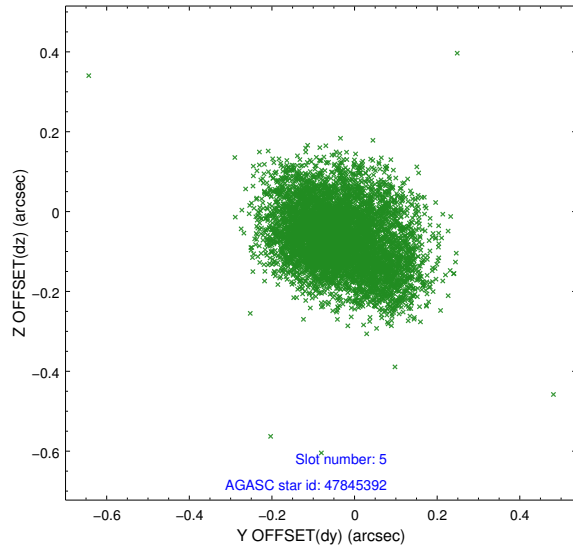
2.4.1 Slot 3



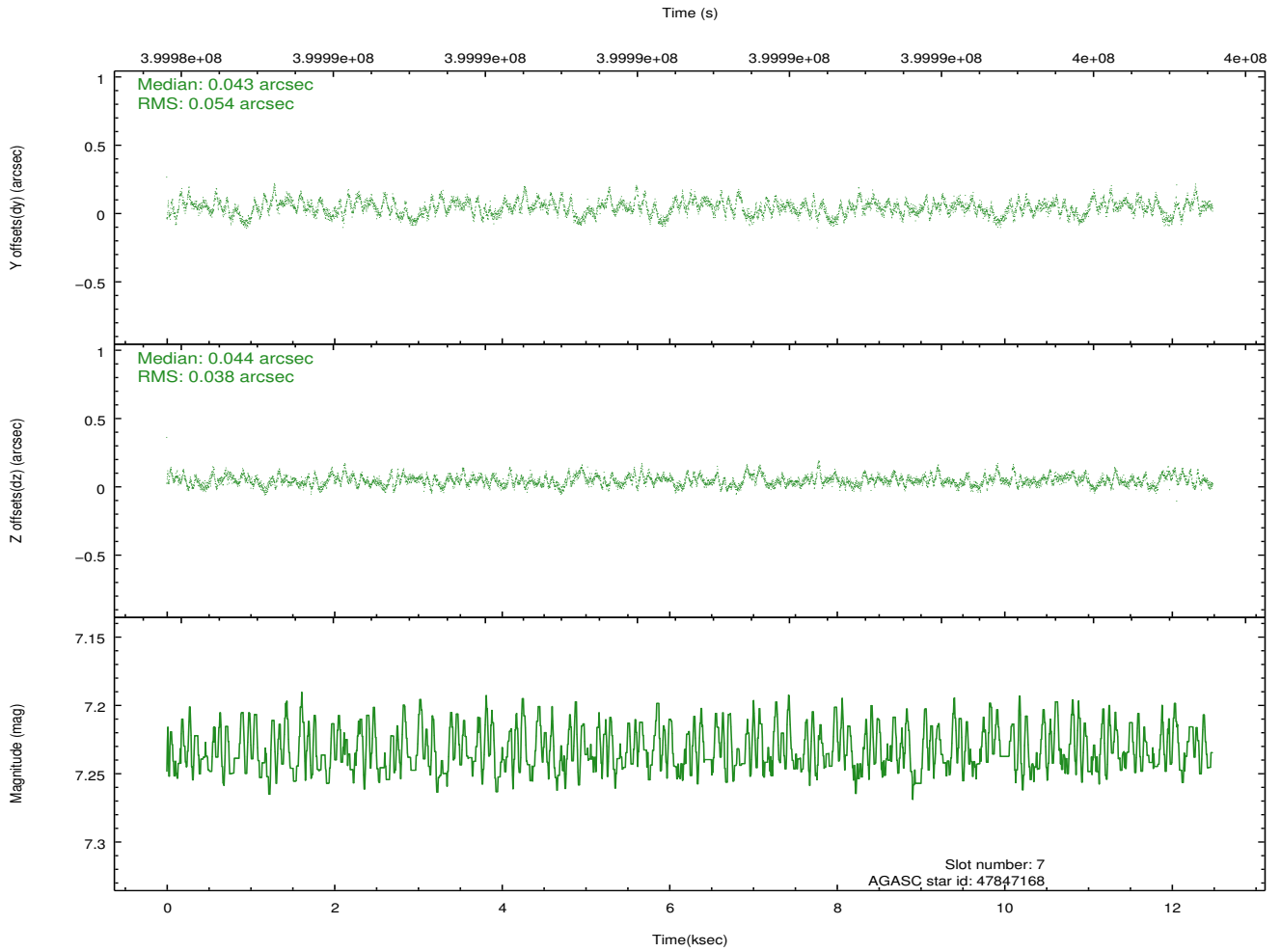
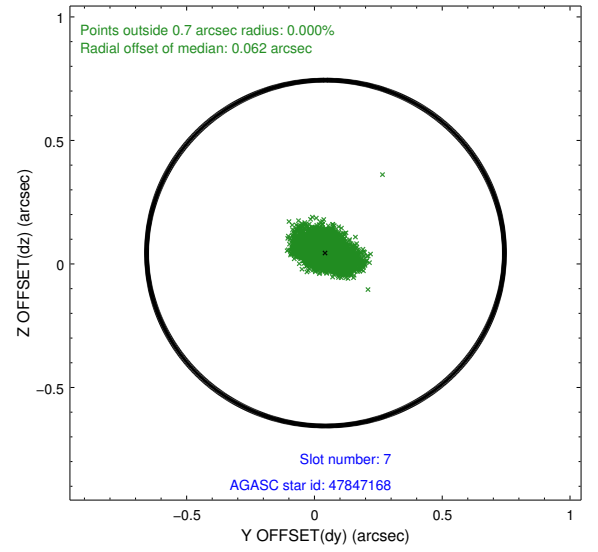
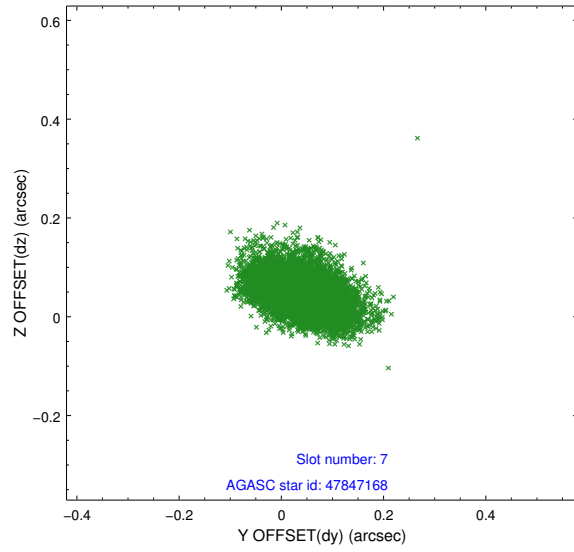
2.4.2 Slot 4



2.4.3 Slot 5

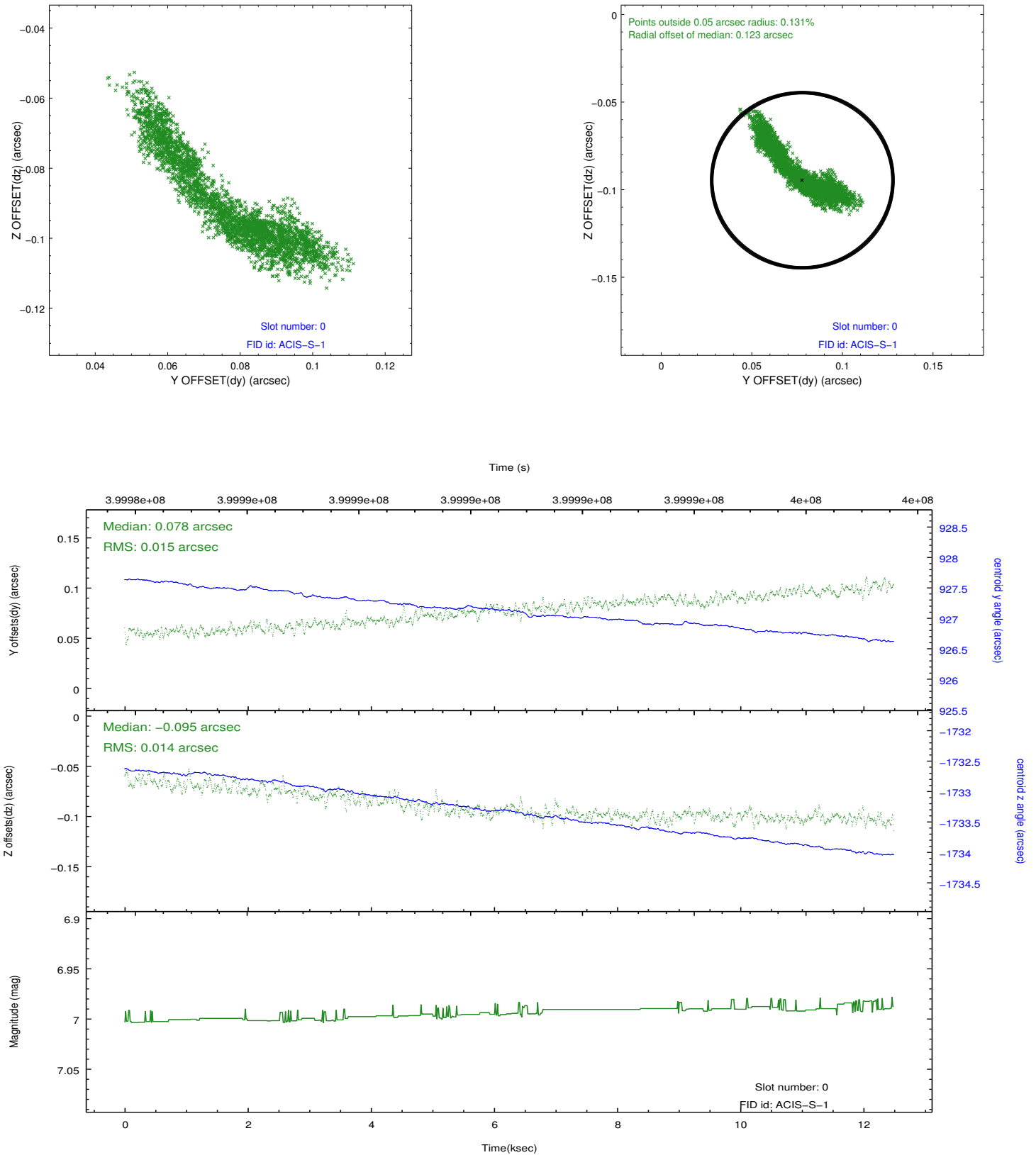


2.4.4 Slot 7

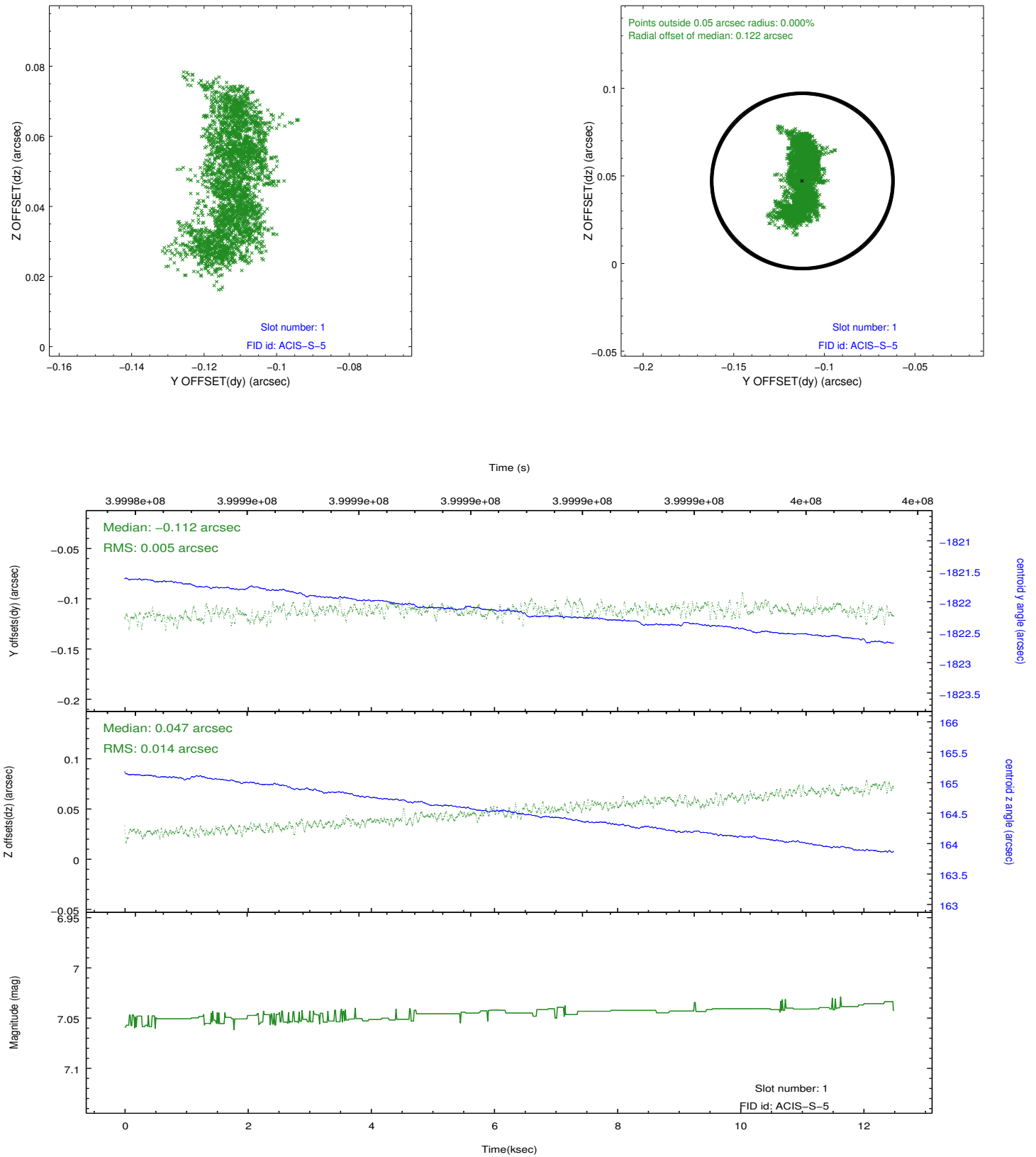


2.5 FID Slots

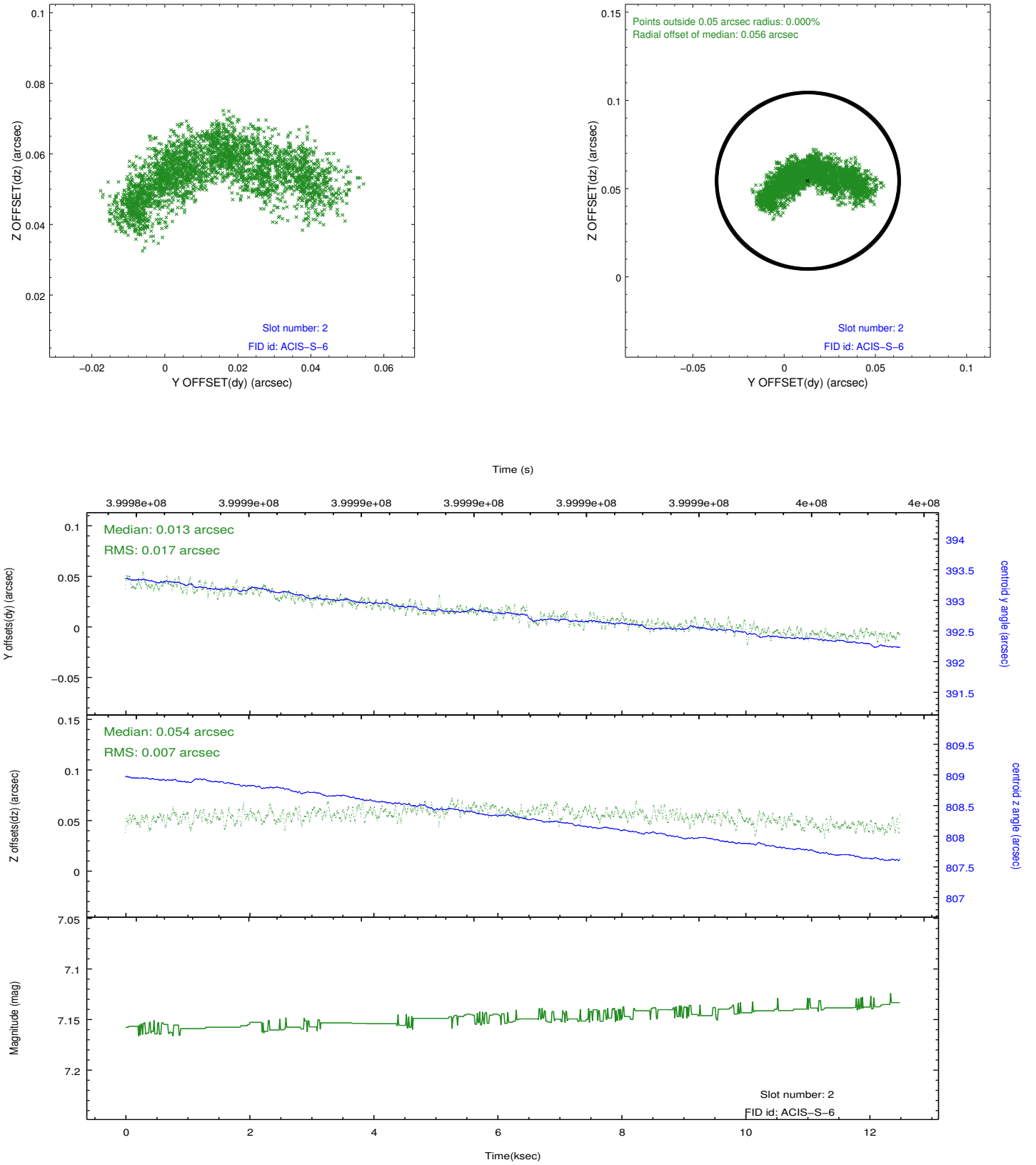
2.5.1 Slot 0



2.5.2 Slot 1



2.5.3 Slot 2



A Summary

A.1 Status

V&V Scientist	Jen Lauer
V&V Date (YYYY-MM-DD)	2012.07.11
V&V Edition	1
V&V Disposition and Status	OK
V&V Charge Time	12.342358983755

A.2 Comments

The guide star assigned to slot 6 was not found. The aspect solution is not expected to be degraded by removing one guide star from the solution.