

V&V Reference Report

L2 ASCDS Version : 8.4.5

Observation 11103 - L2 Version 2
Chandra X-Ray Center

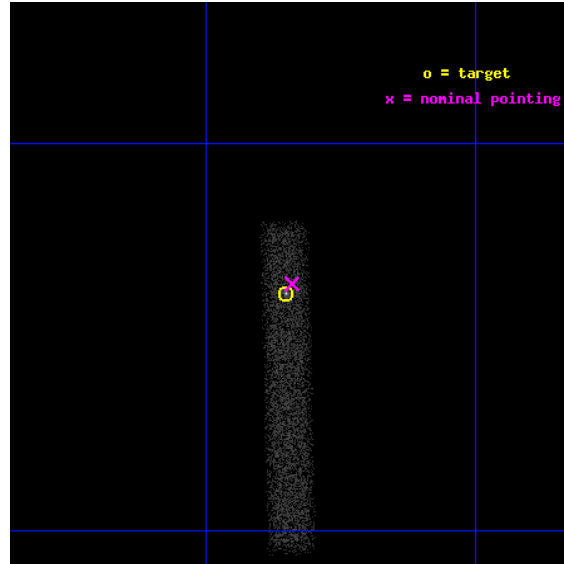
L2 Processing Date : Jun 21 2012

Contents

1	Front	2
2	OBI	3
2.1	OBI	3
2.1.1	Images	3
2.1.2	Bias	3
2.1.3	Parameters	4
2.1.4	Events	4
2.2	Compared Parameters	5
2.3	Aspect	6
2.4	Star Slots	9
2.4.1	Slot 3	9
2.4.2	Slot 4	10
2.4.3	Slot 5	11
2.4.4	Slot 6	12
2.4.5	Slot 7	13
2.5	FID Slots	14
2.5.1	Slot 0	14
2.5.2	Slot 1	15
2.5.3	Slot 2	16
A	Summary	17
A.1	Status	17
A.2	Comments	17

1 Front

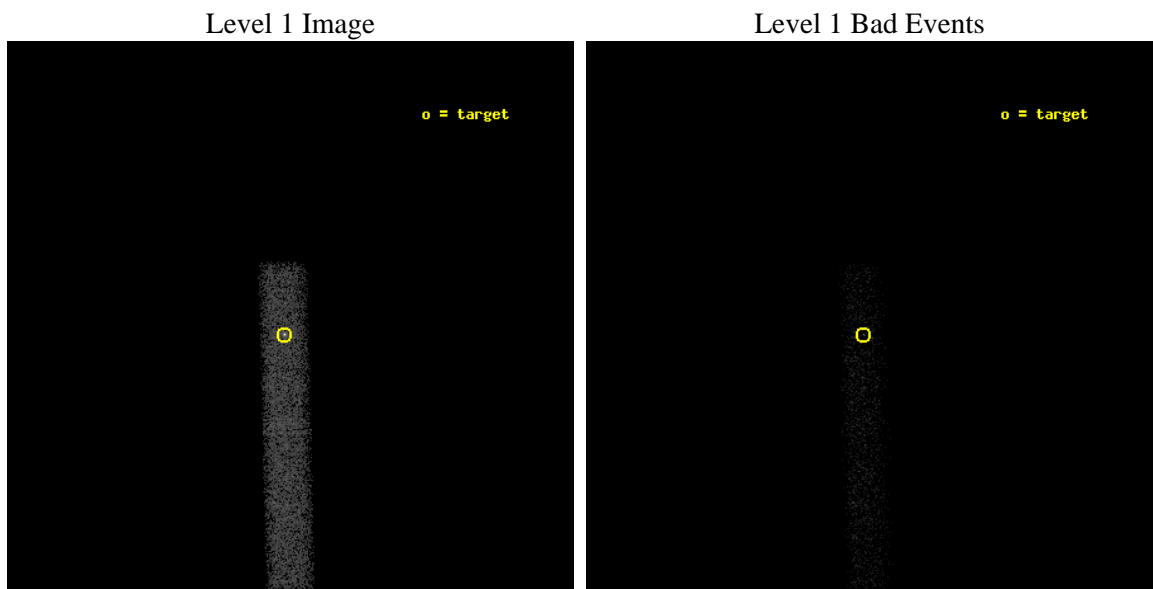
seq_num	501188	Sequence number
obs_id	11103	Observation id
title	Unveiling the nature of cyclic behavior in the period evolution of the Anomalous X ray Pulsar XTE j1810-197	Proposal title
observer	Dr. Federico Bernardini	Principal investigator
object	XTE J1810-197	Source name
dtcycle	0	
cycle	P	events from which exps? Prim/Second/Both
ra_targ	272.462917	Observer's specified target RA [deg]
dec_targ	-19.731083	Observer's specified target Dec [deg]
ra_nom	272.46030776185	Nominal RA [deg]
dec_nom	-19.726946514983	Nominal Dec [deg]
roll_nom	88.555754410722	Nominal Roll [deg]
revision	2	Processing version of data
ontime	12645.199246287	Sum of GTIs [s]
livetime	11468.528248039	Livetime [s]
ontime7	12645.199246287	Sum of GTIs [s]
l2events	10295	Number of level 2 events



2 OBI

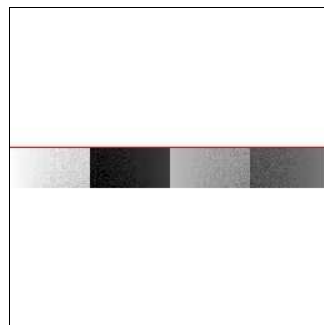
2.1 OBI

2.1.1 Images



2.1.2 Bias

Chip 7



2.1.3 Parameters

obi_num	1	Obi number	sched_exp_time	12500.000000	[s] Scheduled observation exposure time
ascdsver	8.4.5	Processing system revision	ontime	12645.199246287	Sum of GTIs [s]
caldbver	4.4.10	 	ontime7	12645.199246287	Sum of GTIs [s]
date	2012-06-21T14:57:11	Date and time of file creation	l1events	19917	Number of level 1 events
revision	2	Processing version of data			

2.1.4 Events

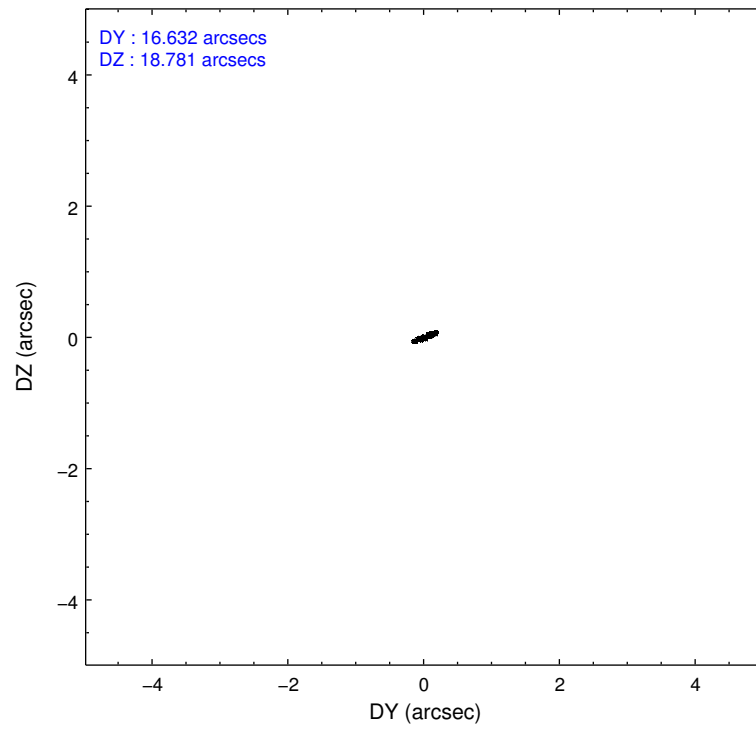
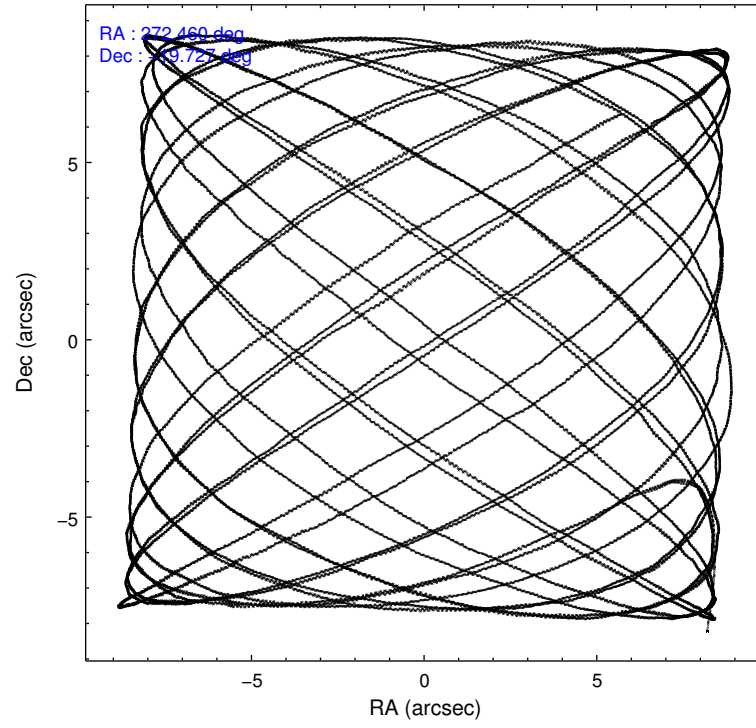
	ccd 7
level 1 events	19917
rejected events	9254
rejected %	46%

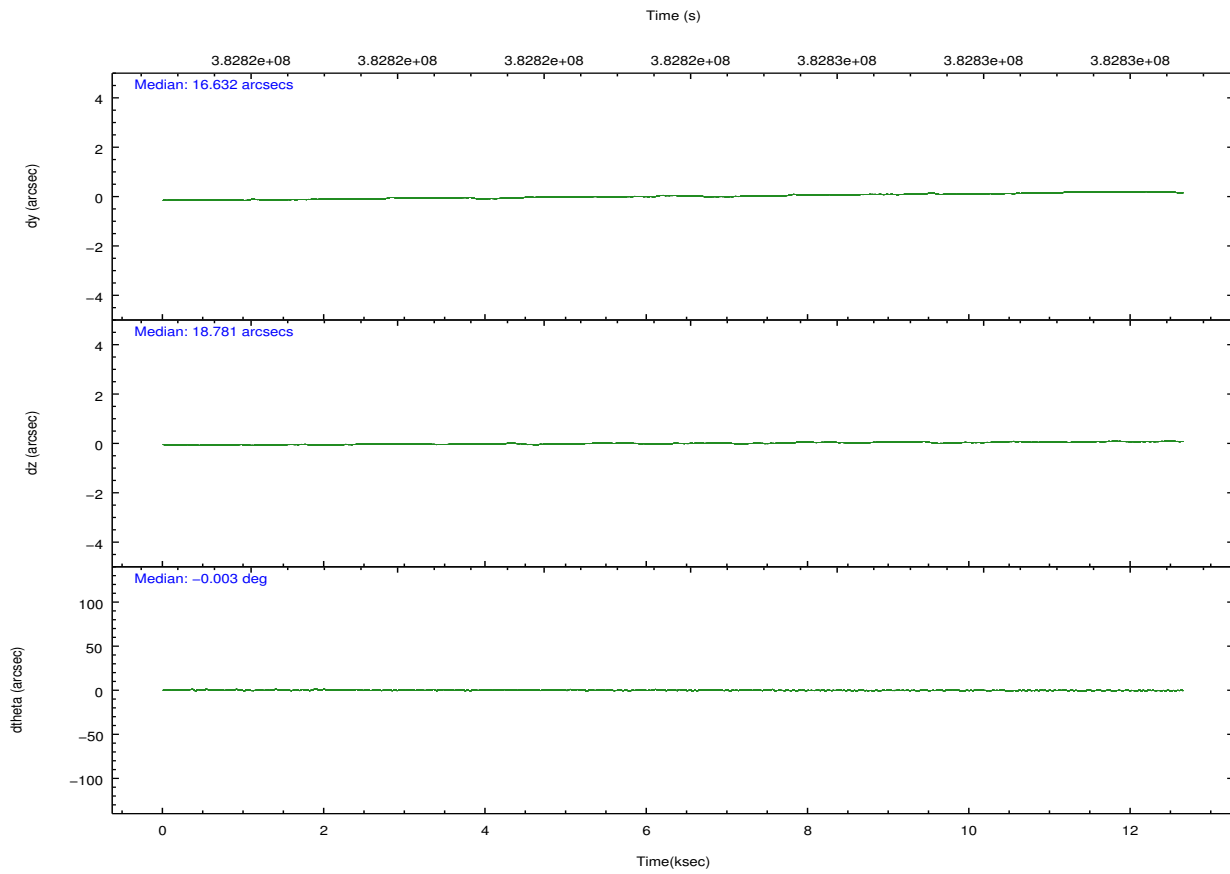
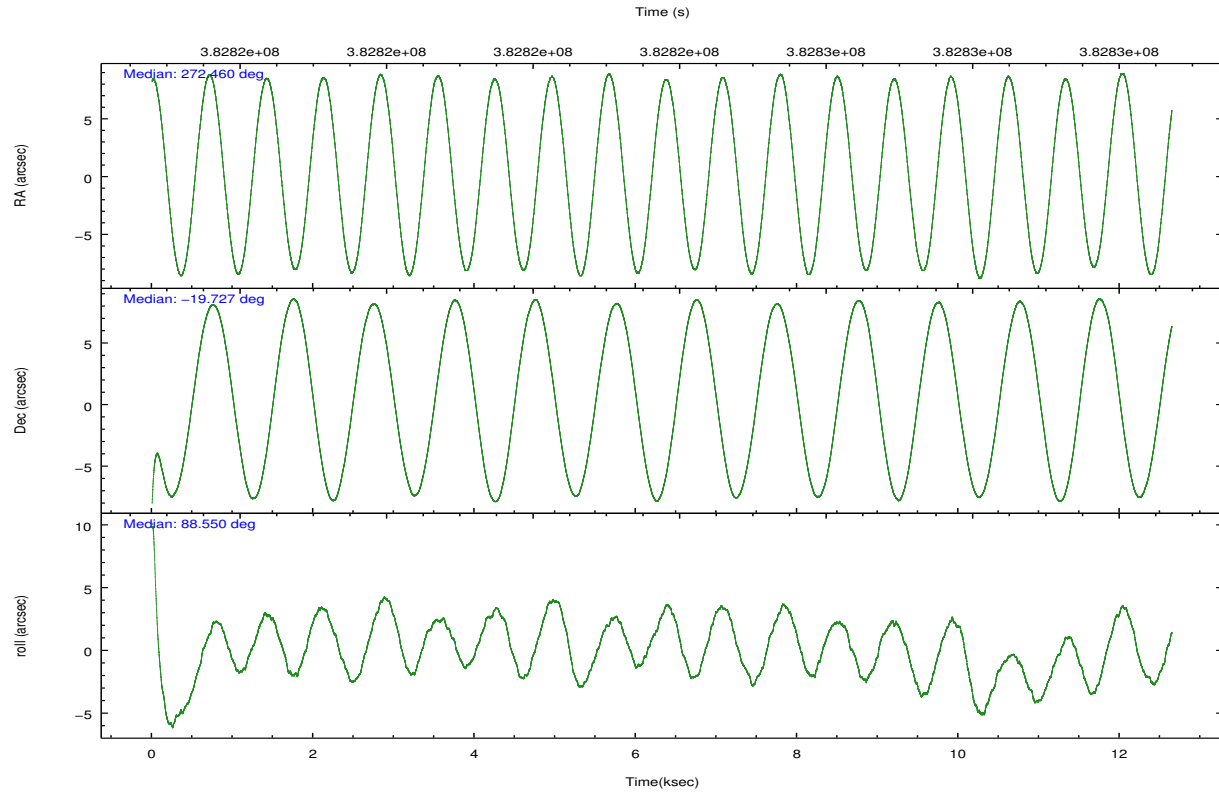
	ccd 7
grade 0 events	1653
	8%
grade 1 events	39
	0%
grade 2 events	2369
	11%
grade 3 events	1480
	7%
grade 4 events	1462
	7%
grade 5 events	1867
	9%
grade 6 events	4390
	22%
grade 7 events	6657
	33%

2.2 Compared Parameters

Parameter	Planned	Actual	Parameter	Planned	Actual
Instrument	ACIS	ACIS	Obspar format version number	7	7
Detector	ACIS-7	ACIS-7	Obspar file type	PREDICTED	ACTUAL
Grating	NONE	NONE	Obspar update status	NONE	UPDATED
Data mode	VFAINT	VFAINT	Number of optional ACIS chips dropped	0	0
Observation mode	POINTING	POINTING	On-chip summing requested	N	N
[deg] Pointing RA	272.474557	272.4603077618541	Subarray requested	CUSTOM	1/8
[deg] Pointing Dec	-19.750734	-19.72694651498263	Subarray start row	449	449
[deg] Pointing Roll	88.403932	88.55575441072173	Subarray row count	128	128
[s] Window start time (MET)	381369666.184000	381369666.184000	Alternating exposures requested	N	N
[s] Window stop time (MET)	383702466.184000	383702466.184000	[s] Primary exposure time	0.000000	0.4
[mm] SIM focus pos	-0.684267	-0.6828225247311905			
[mm] SIM defocus	0	0.001444936568705701			
[mm] SIM translation stage pos	-190.132523	-190.1425803651734			
[mm] SIM translation stage offset	0	0.01005778216563158			
[s] Observation start time (MET)	382817594.184000	382816438.49555			
Observation start date	2010-02-17T18:12:08	2010-02-17T17:53:58			
[s] Observation end time (MET)	382830094.184000	382831008.35879			
Observation end date	2010-02-17T21:40:28	2010-02-17T21:56:48			
Read mode	TIMED	TIMED			

2.3 Aspect



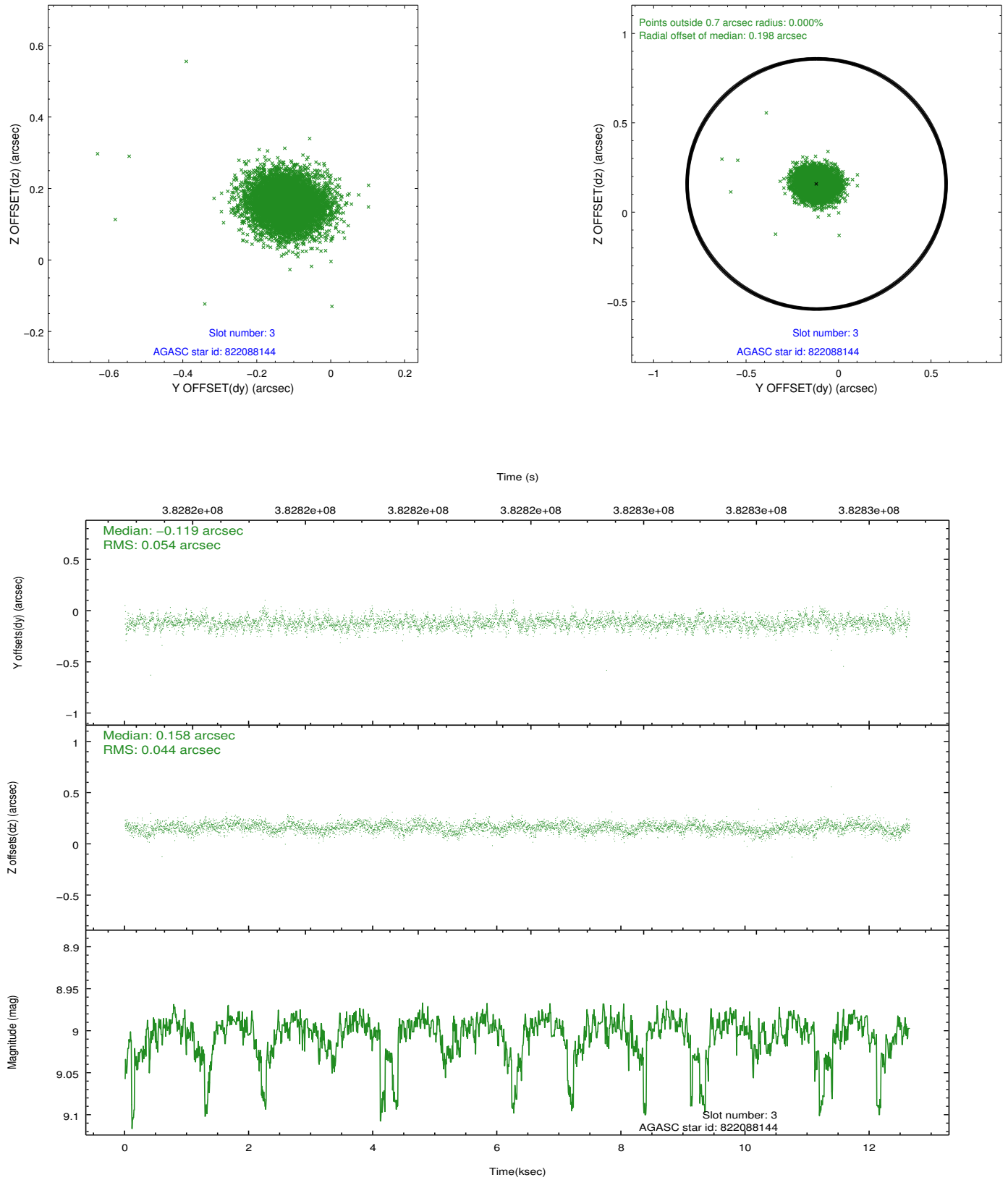


Slot Statistics

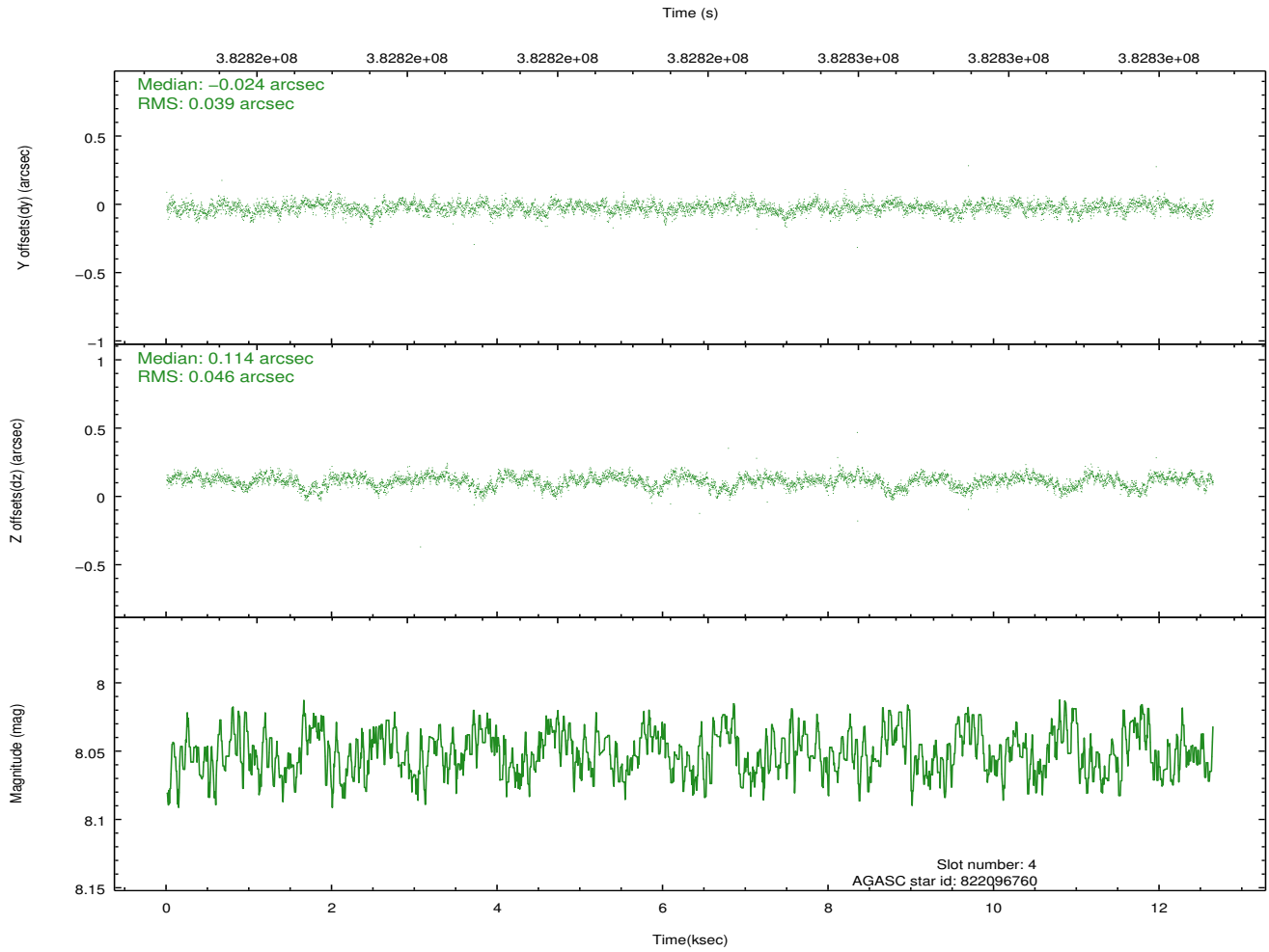
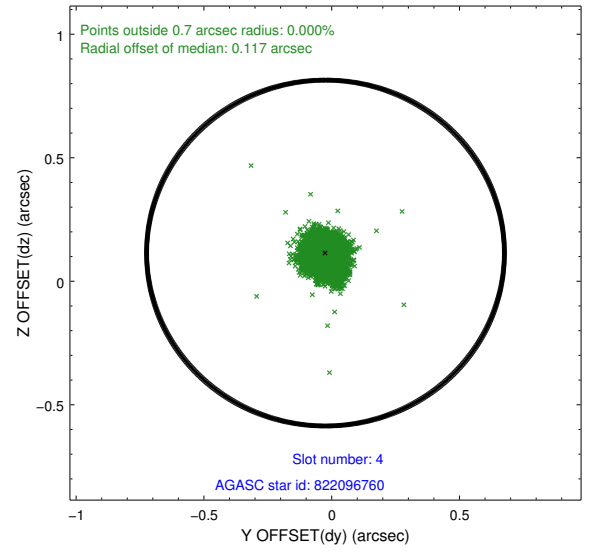
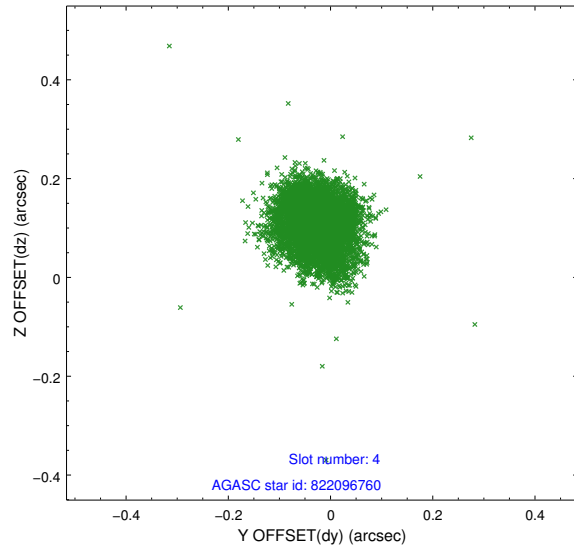
slot	status	id	mag	n_pts	med_dy	med_dz	dr1	dr2	ra	dec	mean_y	mean_z
0	FID	ACIS-S-2	6.87	3085	-0.064	-0.038	0.006	0.010	0.000000	0.000000	-769.75	-1740.24
1	FID	ACIS-S-4	6.96	3085	0.147	0.041	0.006	0.011	0.000000	0.000000	2143.59	167.87
2	FID	ACIS-S-5	6.99	3085	-0.114	0.006	0.007	0.011	0.000000	0.000000	-1822.12	162.01
3	GUIDE	822088144	9.00	6138	-0.119	0.158	0.073	0.120	272.849323	-19.208046	1987.46	-1218.87
4	GUIDE	822096760	8.05	6169	-0.024	0.114	0.062	0.105	272.830526	-19.438690	1156.18	-1176.71
5	GUIDE	822102416	7.50	6170	0.121	-0.173	0.064	0.100	272.173216	-20.087156	-1239.30	984.22
6	GUIDE	820401112	7.93	6168	-0.287	-0.441	0.062	0.099	271.884761	-19.293988	1584.18	2048.87
7	GUIDE	822087128	7.91	6167	0.309	0.348	0.057	0.089	272.956072	-20.371006	-2188.06	-1686.30

2.4 Star Slots

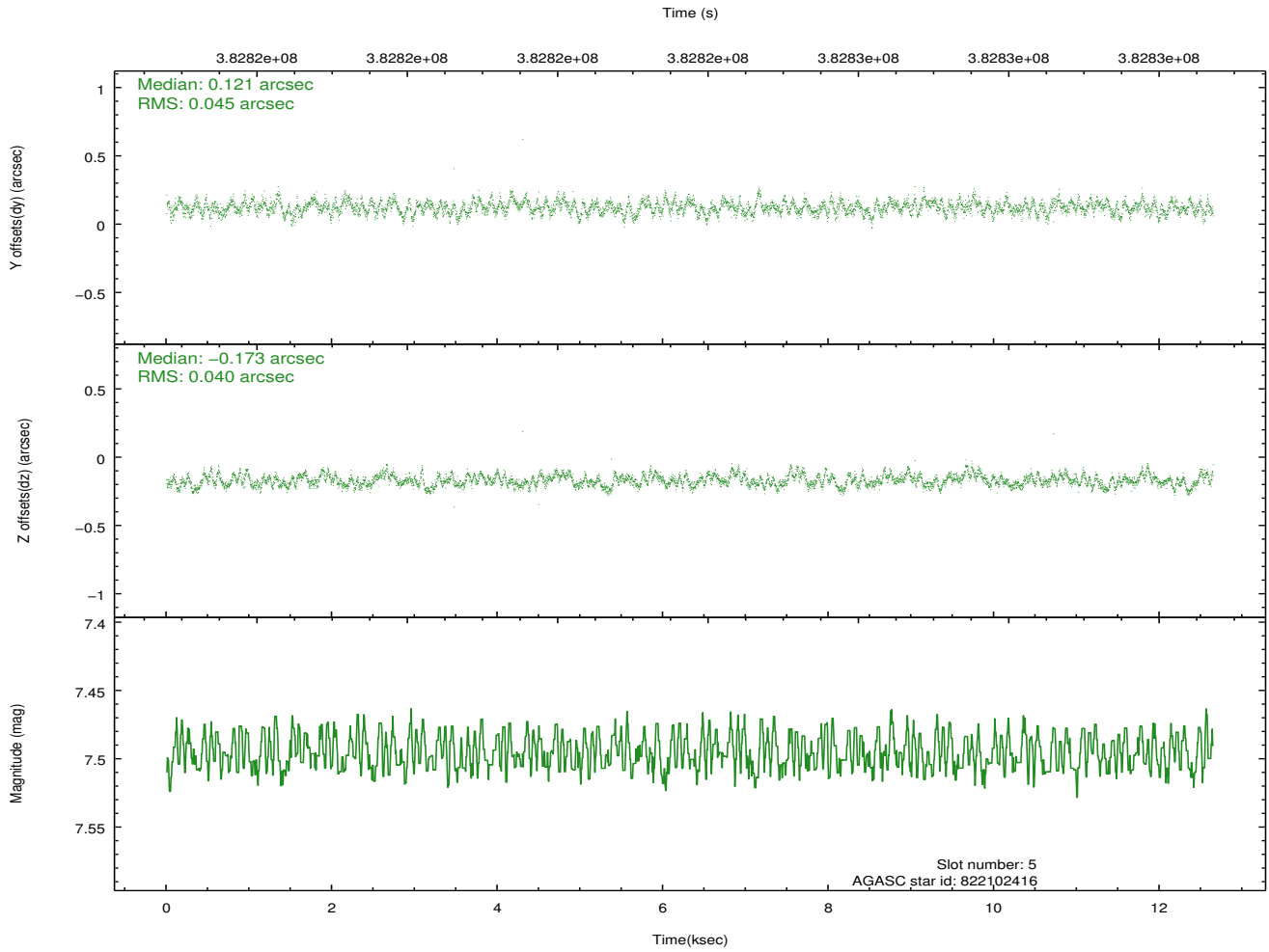
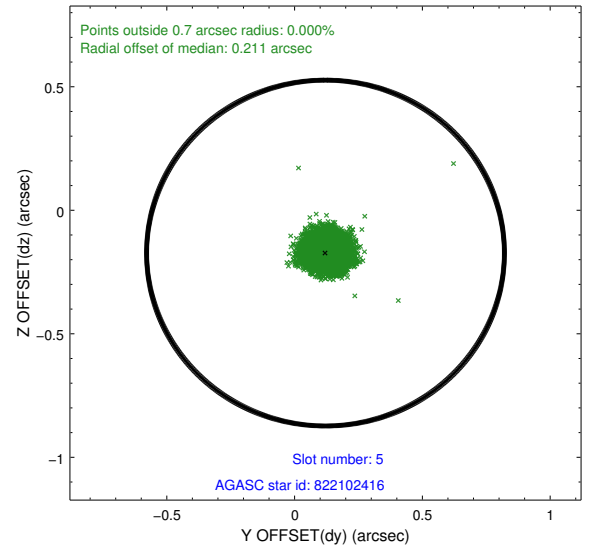
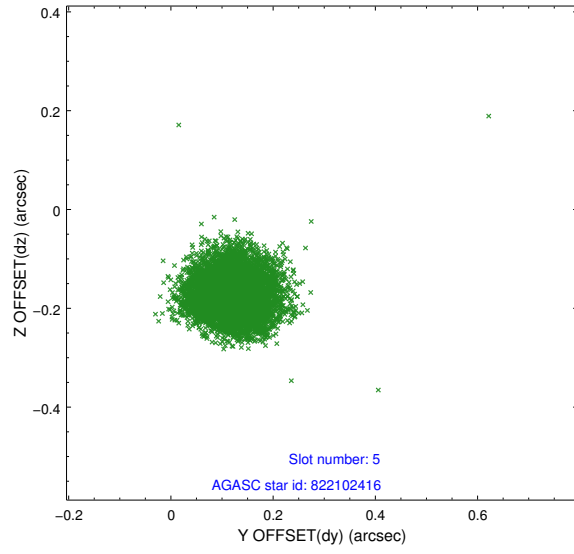
2.4.1 Slot 3



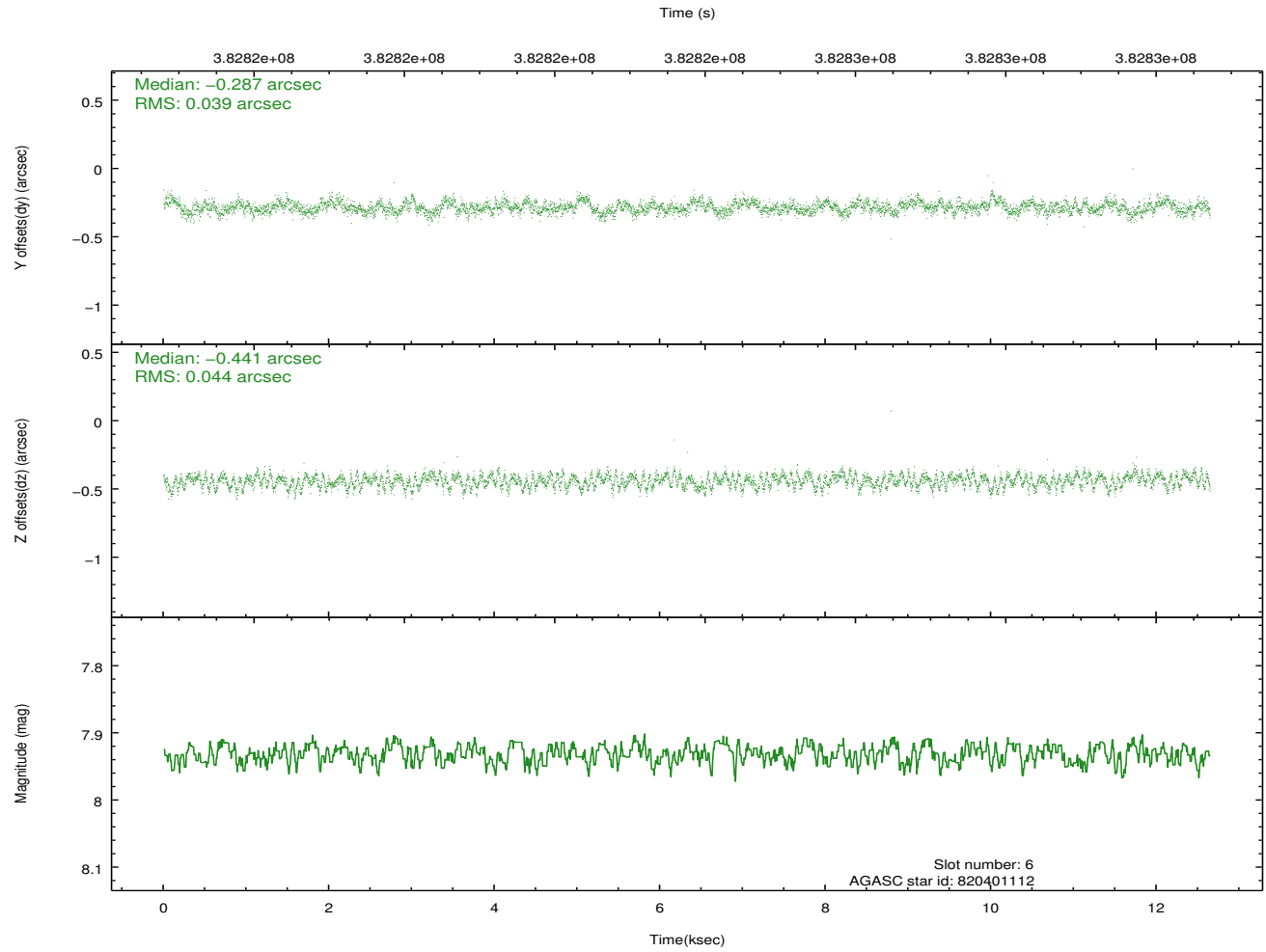
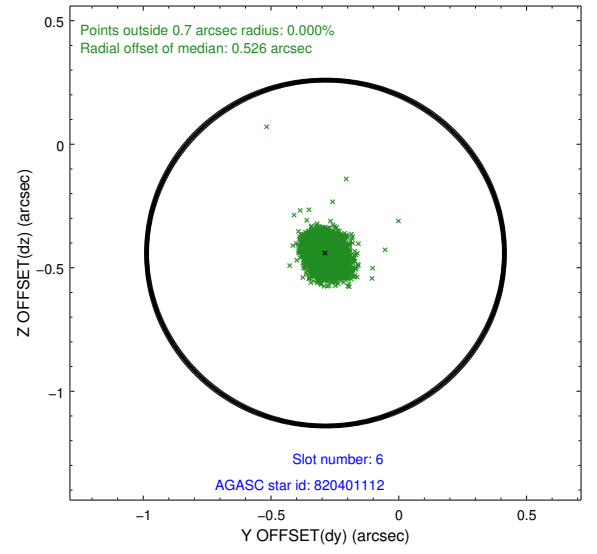
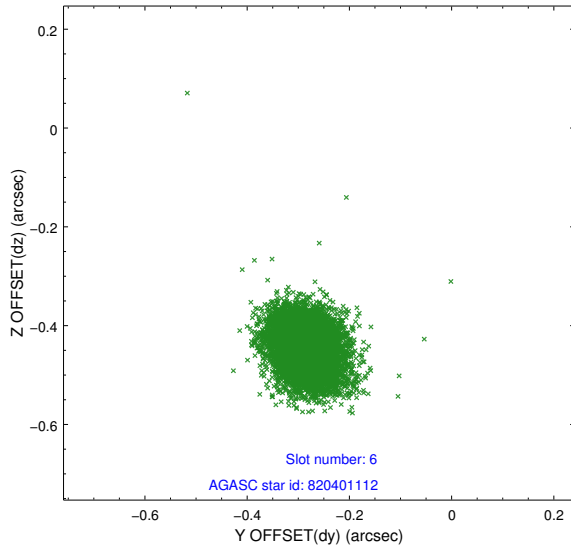
2.4.2 Slot 4



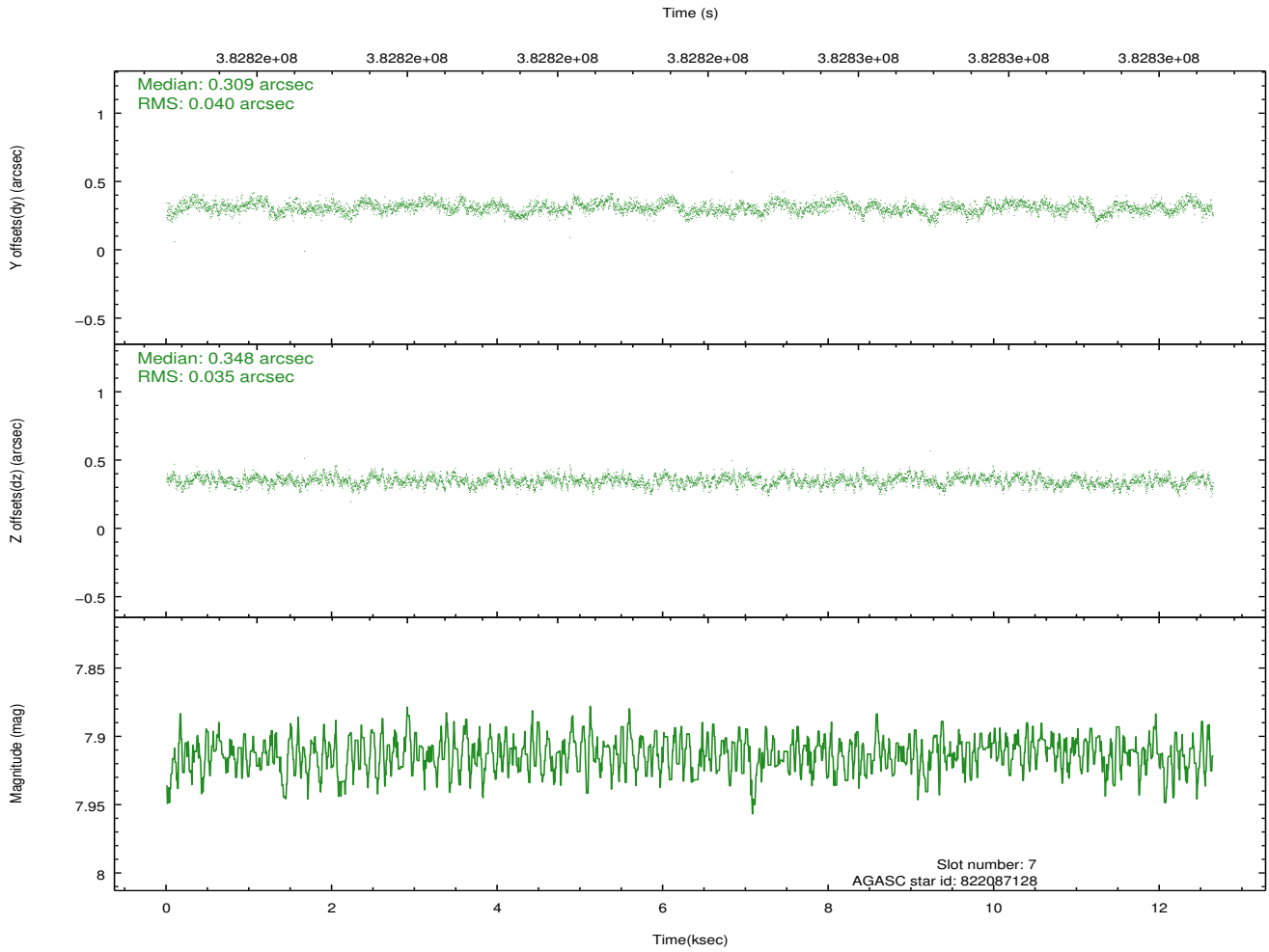
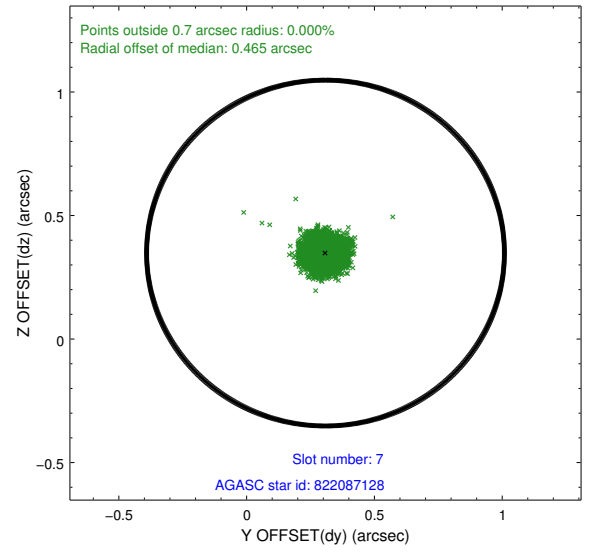
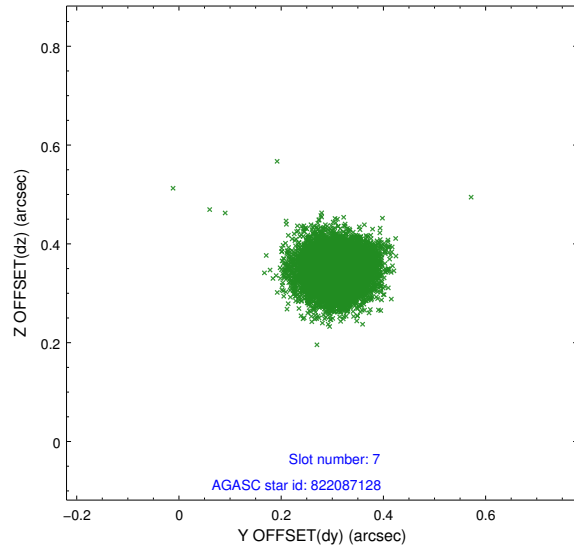
2.4.3 Slot 5



2.4.4 Slot 6

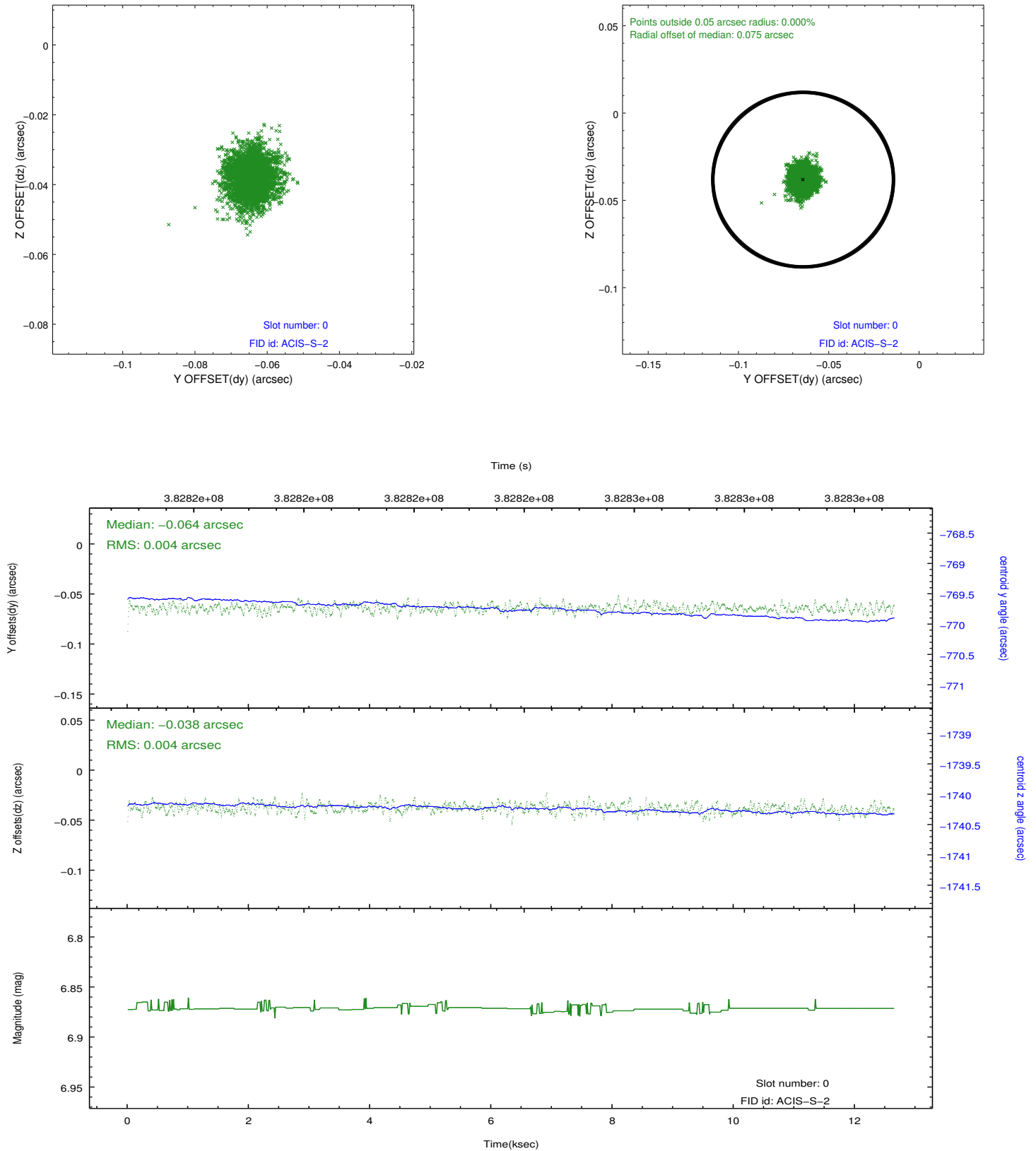


2.4.5 Slot 7

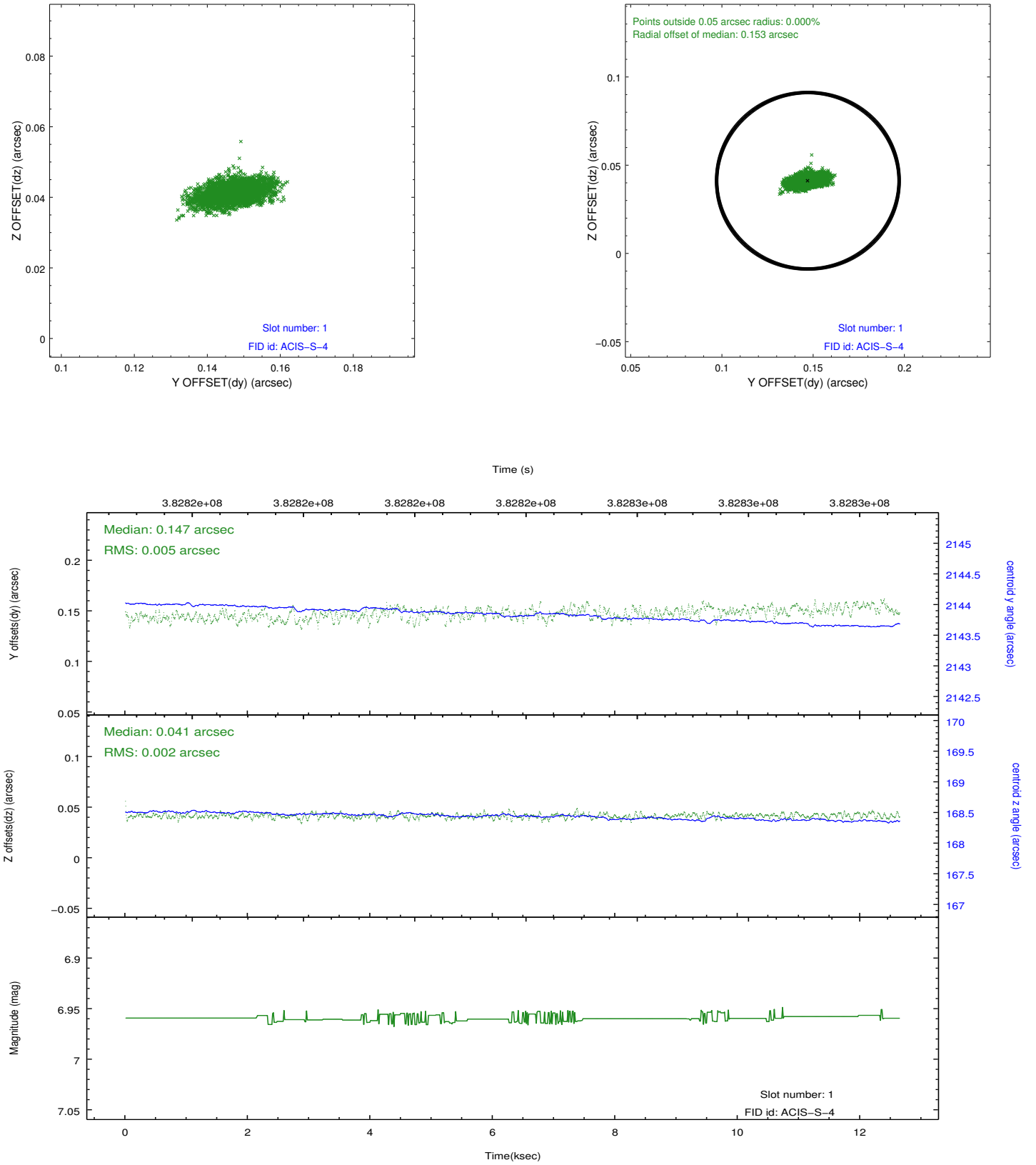


2.5 FID Slots

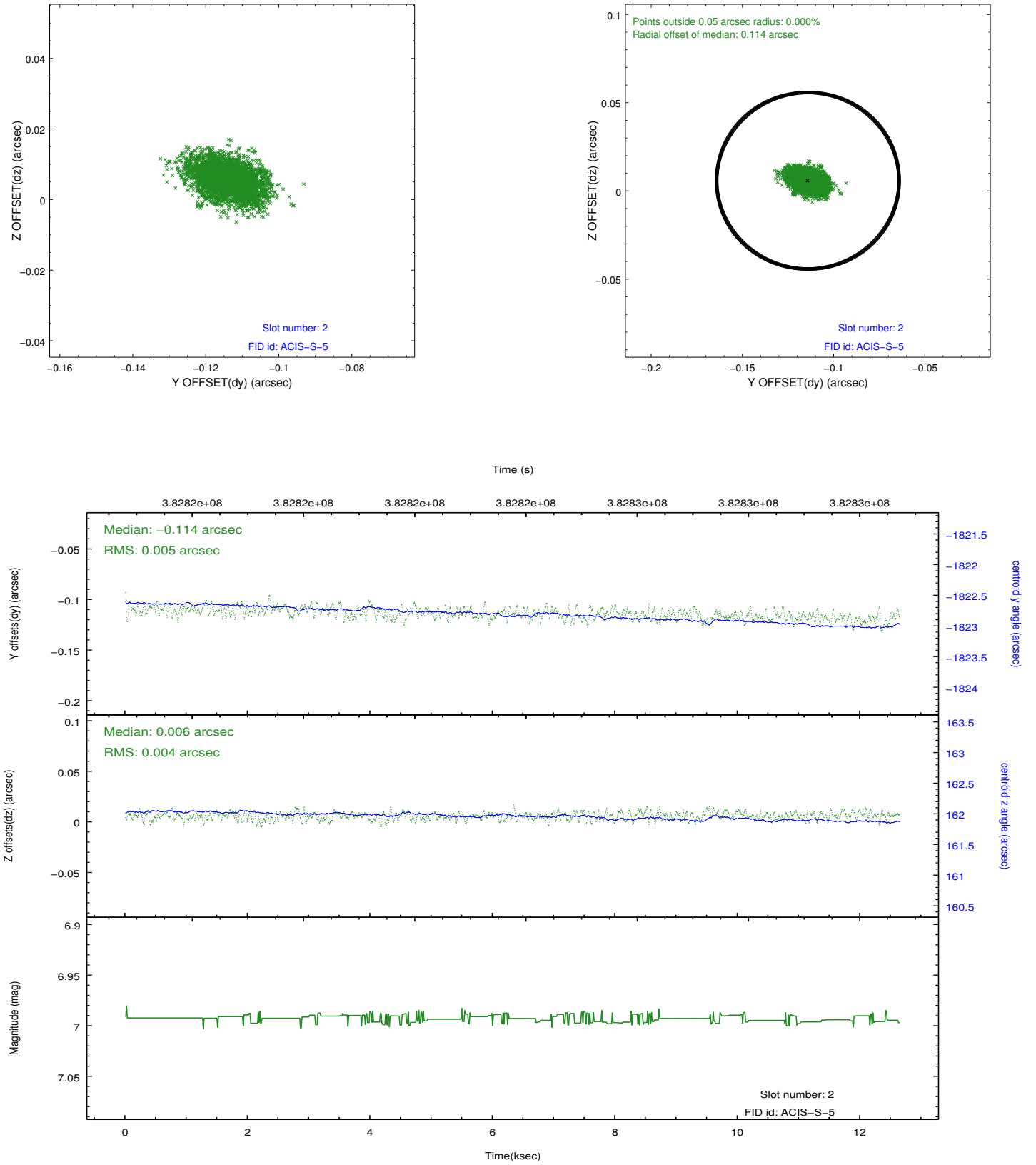
2.5.1 Slot 0



2.5.2 Slot 1



2.5.3 Slot 2



A Summary

A.1 Status

V&V Scientist	Beth Sundheim
V&V Date (YYYY-MM-DD)	2012.06.27
V&V Edition	1
V&V Disposition and Status	OK
V&V Charge Time	12.645199246287

A.2 Comments

Window preference met.