

V&V Reference Report

L2 ASCDS Version : 8.4.5

Observation 10973 - L2 Version 2
Chandra X-Ray Center

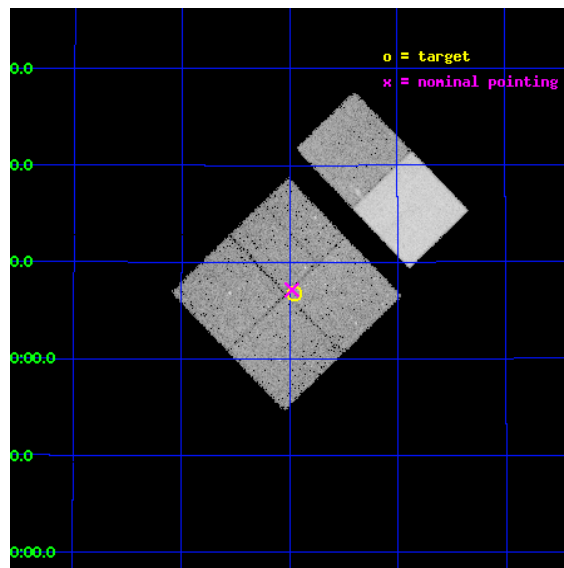
L2 Processing Date : Jun 22 2012

Contents

1	Front	2
2	OBI	3
2.1	OBI	3
2.1.1	Images	3
2.1.2	Bias	3
2.1.3	Parameters	4
2.1.4	Events	4
2.2	Compared Parameters	5
2.3	Aspect	6
2.4	Star Slots	9
2.4.1	Slot 3	9
2.4.2	Slot 4	10
2.4.3	Slot 5	11
2.4.4	Slot 6	12
2.4.5	Slot 7	13
2.5	FID Slots	14
2.5.1	Slot 0	14
2.5.2	Slot 1	15
2.5.3	Slot 2	16
A	Summary	17
A.1	Status	17
A.2	Comments	17

1 Front

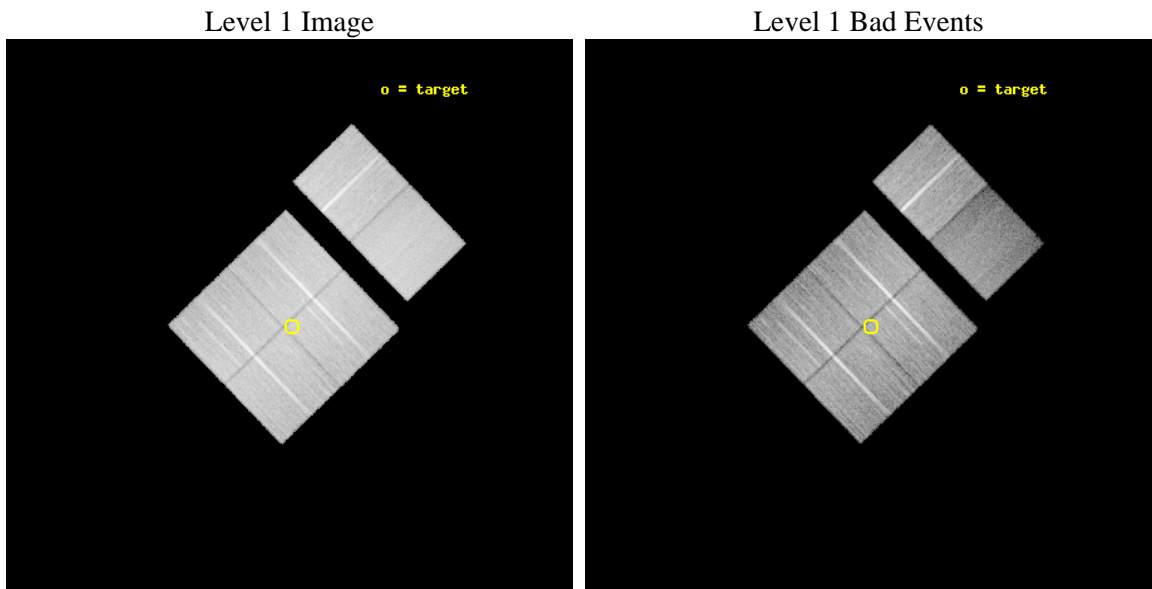
seq_num	200605	Sequence number
obs_id	10973	Observation id
title	The Chandra Cygnus OB2 Survey	Proposal title
observer	Dr. Jeremy Drake	Principal investigator
object	Cygnus OB2	Source name
dtcycle	0	
cycle	P	events from which exps? Prim/Second/Both
ra_targ	308.739706	Observer's specified target RA [deg]
dec_targ	41.111948	Observer's specified target Dec [deg]
ra_nom	308.74454325964	Nominal RA [deg]
dec_nom	41.119169650374	Nominal Dec [deg]
roll_nom	46.005503177336	Nominal Roll [deg]
revision	2	Processing version of data
ontime	27746.926030278	Sum of GTIs [s]
livetime	27395.57774569	Livetime [s]
ontime0	27750.043840706	Sum of GTIs [s]
ontime1	27746.843900561	Sum of GTIs [s]
ontime2	27753.36690098	Sum of GTIs [s]
ontime3	27746.926030278	Sum of GTIs [s]
ontime6	27753.489991128	Sum of GTIs [s]
ontime7	27753.448951125	Sum of GTIs [s]
l2events	197874	Number of level 2 events



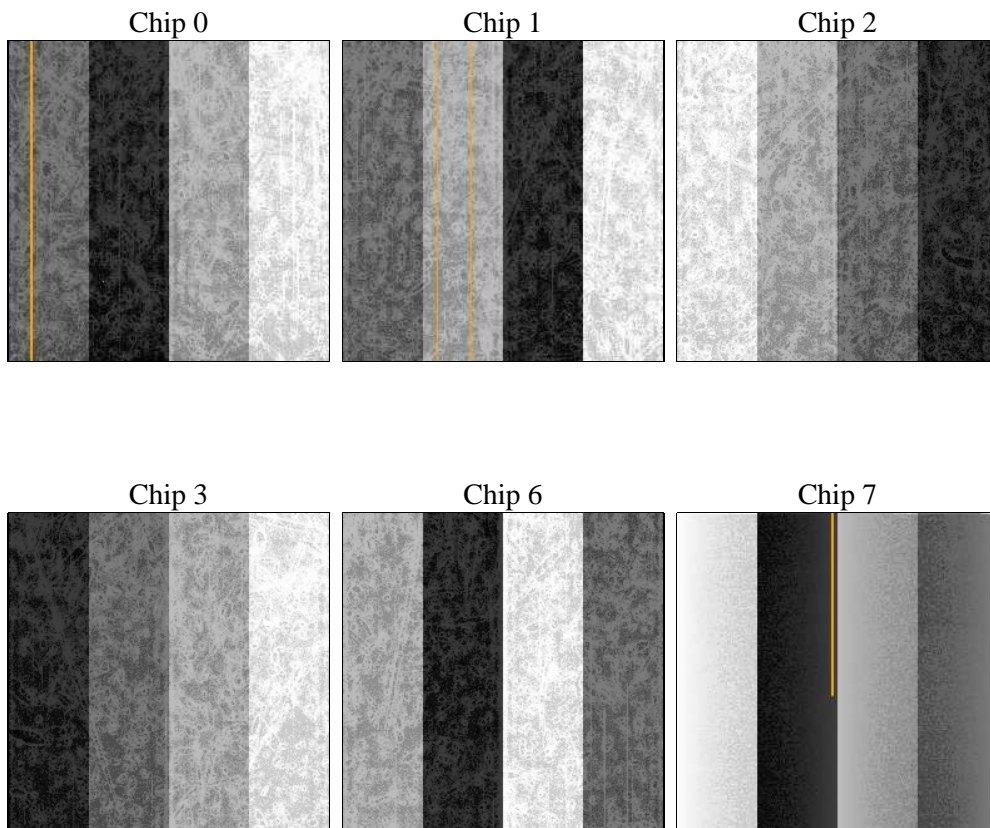
2 OBI

2.1 OBI

2.1.1 Images



2.1.2 Bias



2.1.3 Parameters

obi_num	0	Obi number	sched_exp_time	28000.000000	[s] Scheduled observation exposure time
ascdsver	8.4.5	Processing system revision	ontime	27746.926030278	Sum of GTIs [s]
caldsver	4.4.10	 	ontime0	27750.043840706	Sum of GTIs [s]
date	2012-06-22T16:19:37	Date and time of file creation	ontime1	27746.843900561	Sum of GTIs [s]
revision	2	Processing version of data	ontime2	27753.36690098	Sum of GTIs [s]
			ontime3	27746.926030278	Sum of GTIs [s]
			ontime6	27753.489991128	Sum of GTIs [s]
			ontime7	27753.448951125	Sum of GTIs [s]
			l1events	1237907	Number of level 1 events

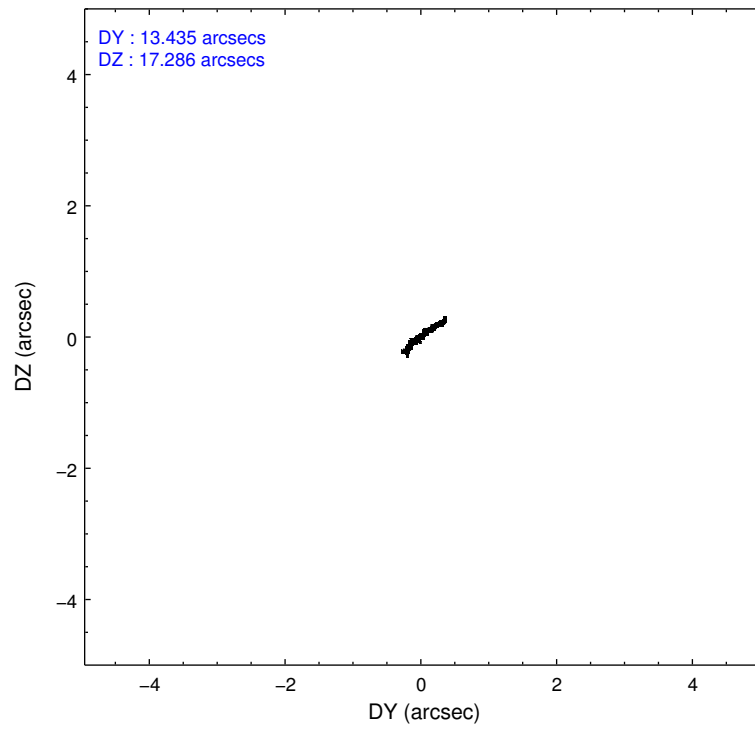
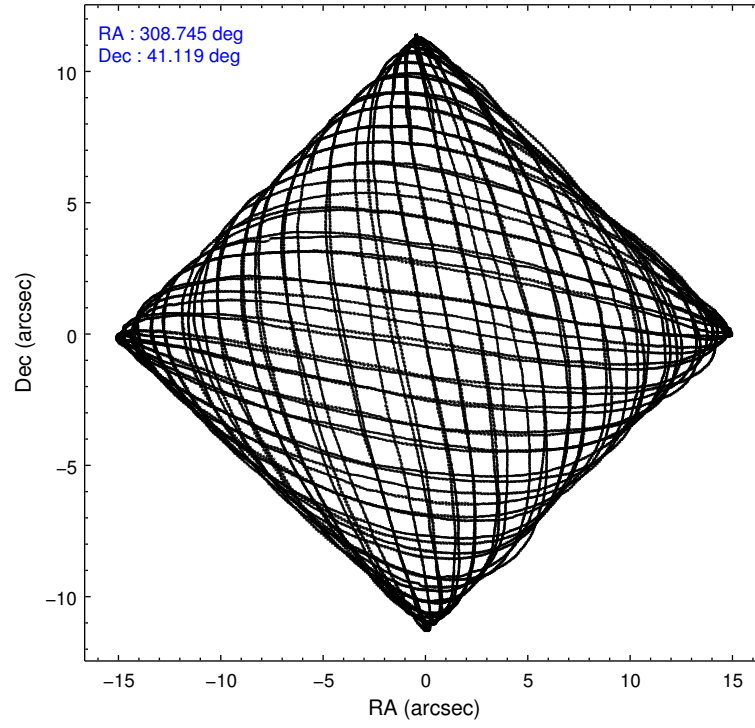
2.1.4 Events

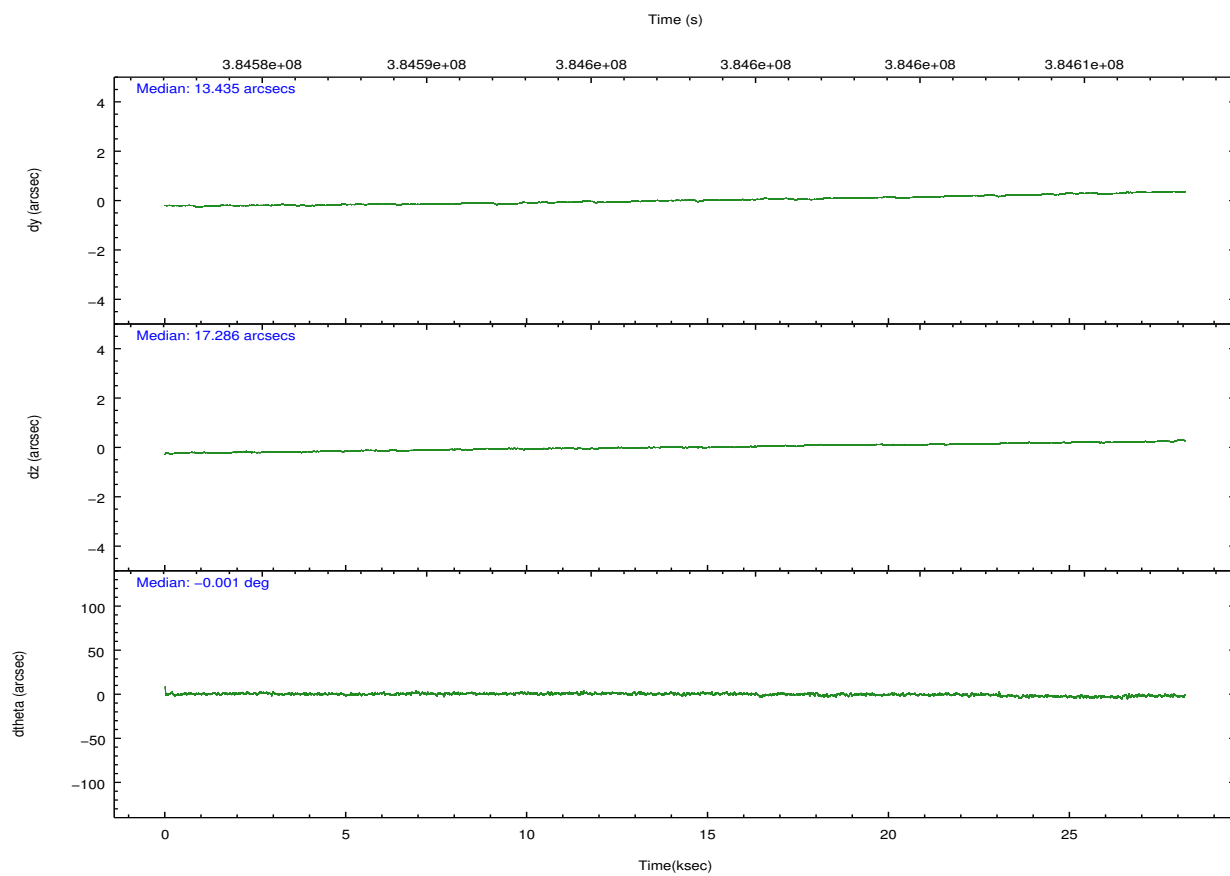
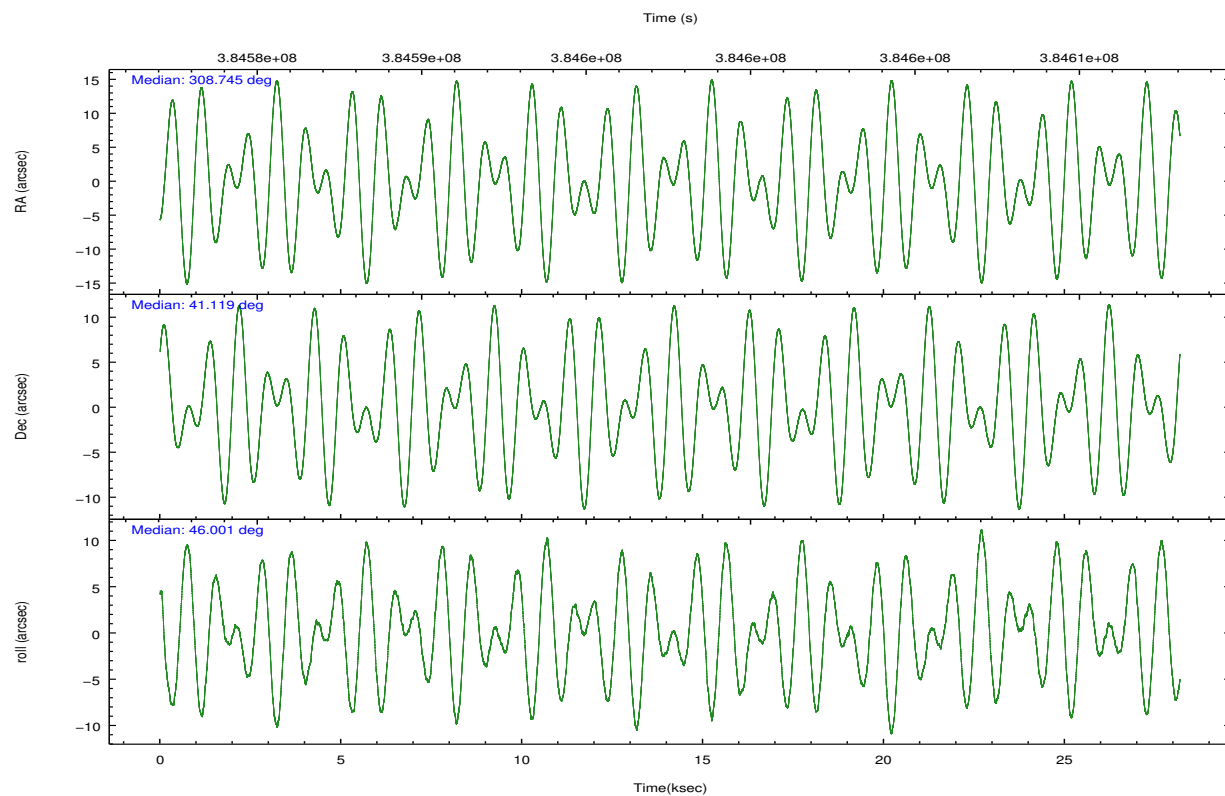
	ccd 0	ccd 1	ccd 2	ccd 3	ccd 6	ccd 7		ccd 0	ccd 1	ccd 2	ccd 3	ccd 6	ccd 7
level 1 events	195768	192635	213267	207260	215886	213091	grade 0 events	8342	8165	8657	8989	9571	11272
rejected events	173418	169745	191073	184933	191432	106632		4%	4%	4%	4%	4%	5%
rejected %	88%	88%	89%	89%	88%	50%	grade 1 events	131	106	135	141	119	365
								0%	0%	0%	0%	0%	0%
							grade 2 events	5622	5293	5219	4749	5457	22972
								2%	2%	2%	2%	2%	10%
							grade 3 events	2297	2535	2161	2298	2518	9870
								1%	1%	1%	1%	1%	4%
							grade 4 events	2233	2418	2339	2332	2309	9997
								1%	1%	1%	1%	1%	4%
							grade 5 events	6896	7259	6346	7818	7635	22790
								3%	3%	2%	3%	3%	10%
							grade 6 events	3864	4480	3825	3966	4606	52386
								1%	2%	1%	1%	2%	24%
							grade 7 events	166383	162379	184585	176967	183671	83439
								84%	84%	86%	85%	85%	39%

2.2 Compared Parameters

Parameter	Planned	Actual	Parameter	Planned	Actual
Instrument	ACIS	ACIS	Obspar format version number	7	7
Detector	ACIS-012367	ACIS-012367	Obspar file type	PREDICTED	ACTUAL
Grating	NONE	NONE	Obspar update status	NONE	UPDATED
Data mode	VFAINT	VFAINT	CCD I0 on	Y	Y
Observation mode	POINTING	POINTING	CCD I1 on	Y	Y
[deg] Pointing RA	308.735844	308.7445432596376	CCD I2 on	Y	Y
[deg] Pointing Dec	41.092454	41.11916965037418	CCD I3 on	Y	Y
[deg] Pointing Roll	45.802534	46.00550317733565	CCD S0 on	N	N
[mm] SIM focus pos	-0.782348	-0.7809083437167272	CCD S1 on	N	N
[mm] SIM defocus	0	0.001439871863259334	CCD S2 on	O2	Y
[mm] SIM translation stage pos	-233.592463	-233.5874344608287	CCD S3 on	O1	Y
[mm] SIM translation stage offset	0	-0.005018542100998502	CCD S4 on	N	N
[s] Observation start time (MET)	384583650.184000	384583274.13516	CCD S5 on	N	N
Observation start date	2010-03-10T04:46:24	2010-03-10T04:41:14	Number of optional ACIS chips dropped	0	0
[s] Observation end time (MET)	384611650.184000	384611784.51161	On-chip summing requested	N	N
Observation end date	2010-03-10T12:33:04	2010-03-10T12:36:24	Subarray requested	NONE	NONE
Read mode	TIMED	TIMED	Alternating exposures requested	N	N
			[s] Primary exposure time	0.000000	3.2

2.3 Aspect



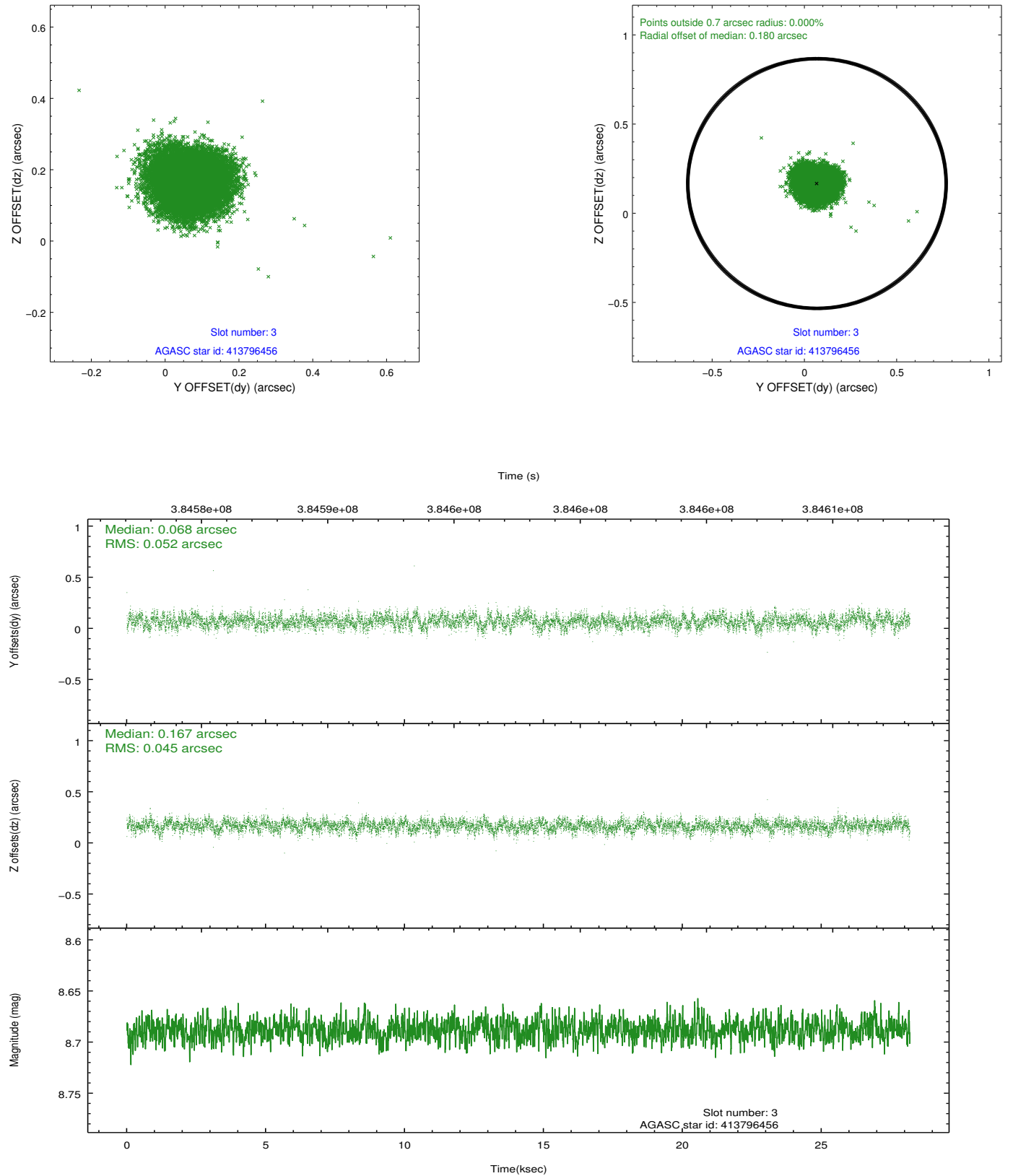


Slot Statistics

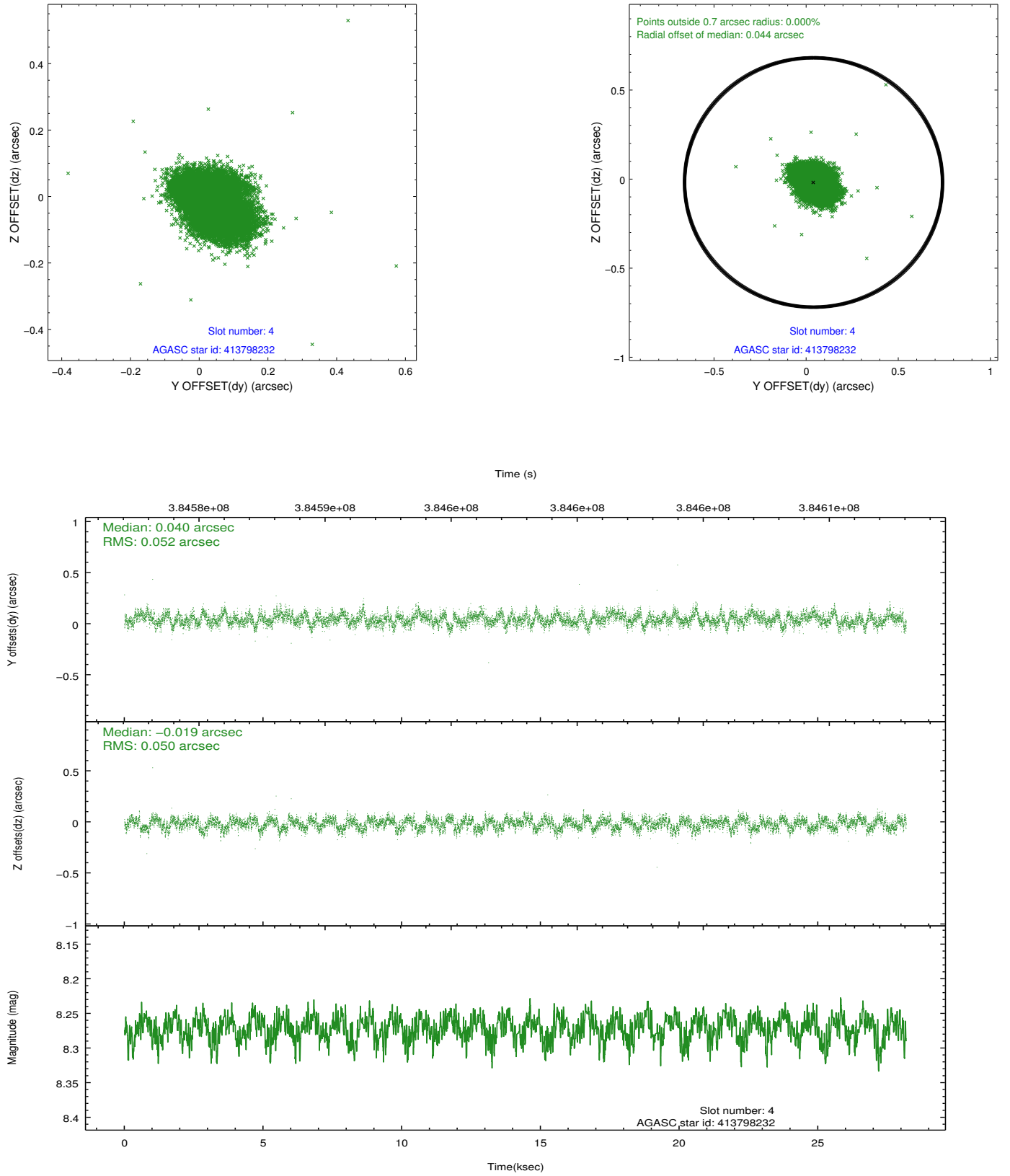
slot	status	id	mag	n_pts	med_dy	med_dz	dr1	dr2	ra	dec	mean_y	mean_z
0	FID	ACIS-I-1	7.01	6873	-0.039	-0.051	0.012	0.024	0.000000	0.000000	926.00	-841.01
1	FID	ACIS-I-2	6.95	6874	-0.168	-0.042	0.009	0.027	0.000000	0.000000	-768.17	-847.47
2	FID	ACIS-I-4	6.93	6874	0.110	0.161	0.009	0.019	0.000000	0.000000	2146.02	1058.95
3	GUIDE	413796456	8.69	13743	0.068	0.167	0.073	0.117	308.312084	40.613132	-2042.17	-370.46
4	GUIDE	413798232	8.27	13744	0.040	-0.019	0.076	0.123	309.116117	41.044272	596.93	-859.47
5	GUIDE	414327224	7.99	13746	-0.074	0.036	0.075	0.128	309.355439	41.393115	1947.32	-440.53
6	GUIDE	413799128	8.73	13743	-0.011	-0.073	0.073	0.123	307.948219	41.110579	-1435.17	1583.78
7	GUIDE	413800040	8.53	13741	-0.026	-0.104	0.062	0.100	308.324931	40.981886	-1062.02	525.03

2.4 Star Slots

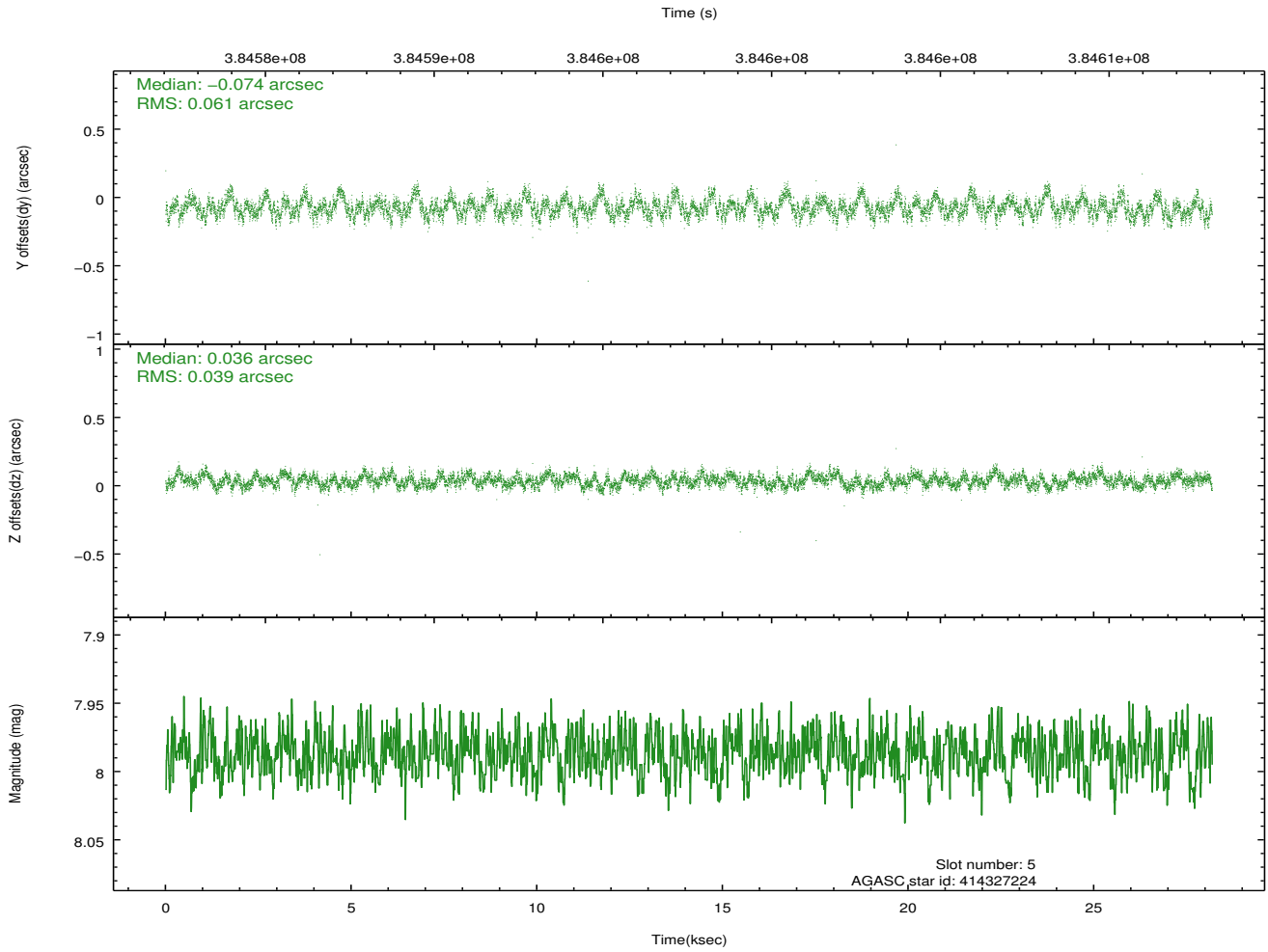
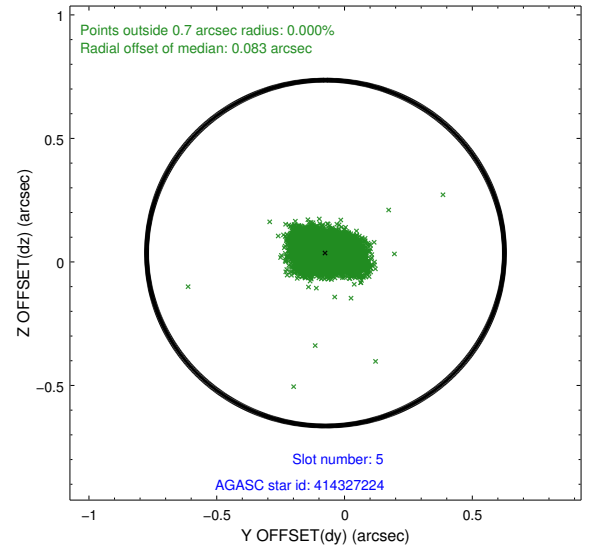
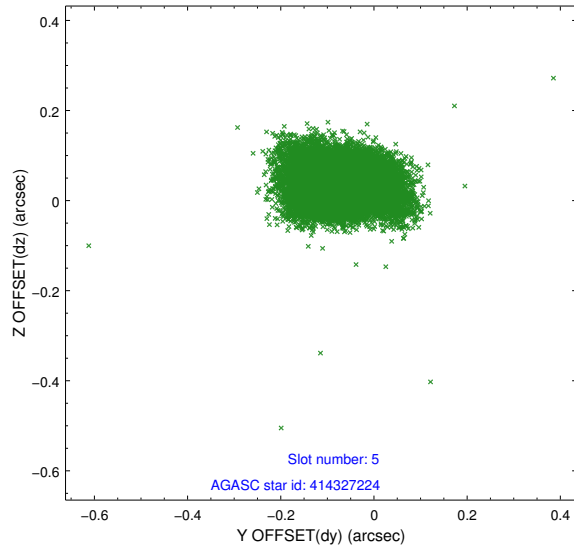
2.4.1 Slot 3



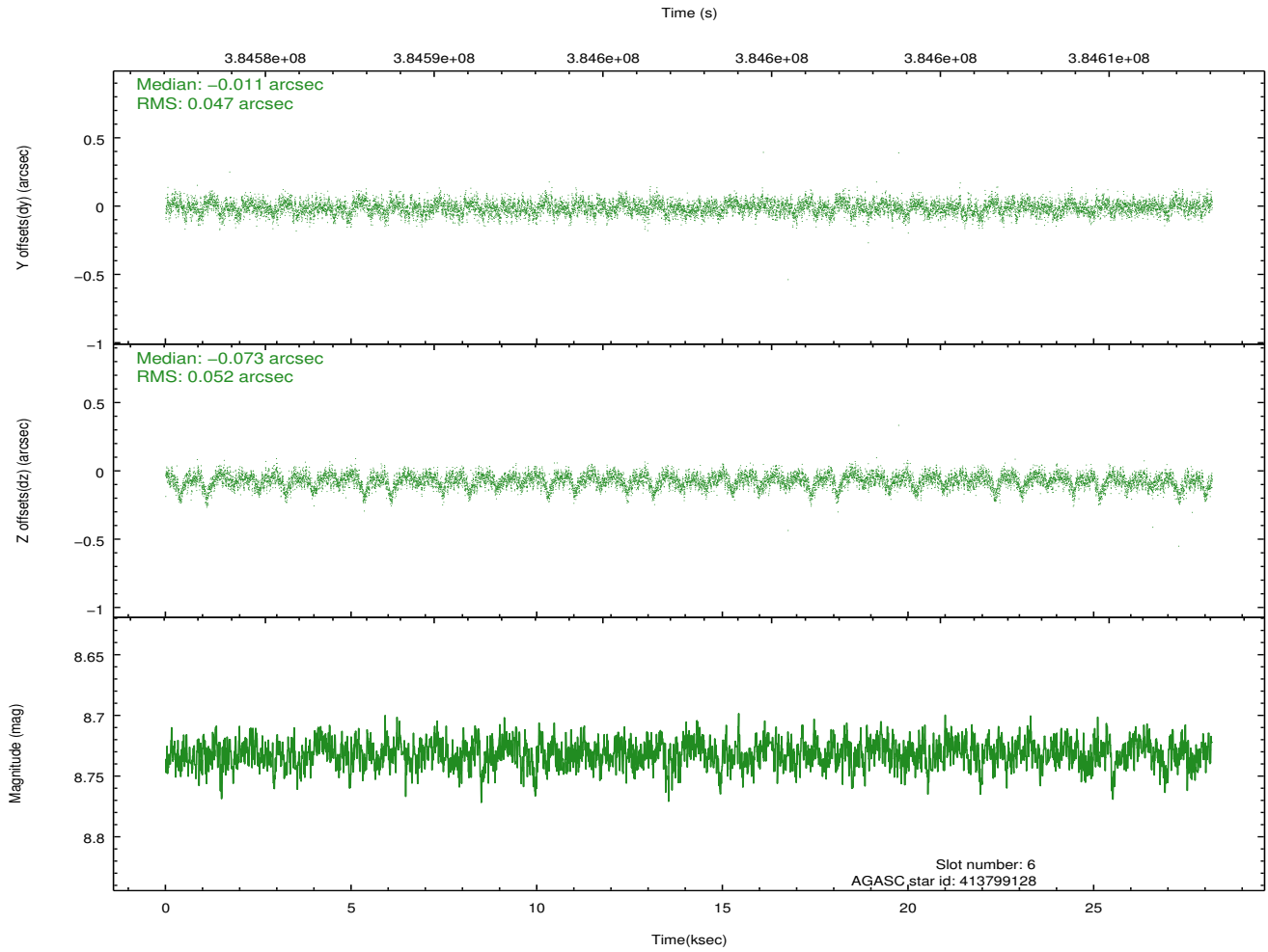
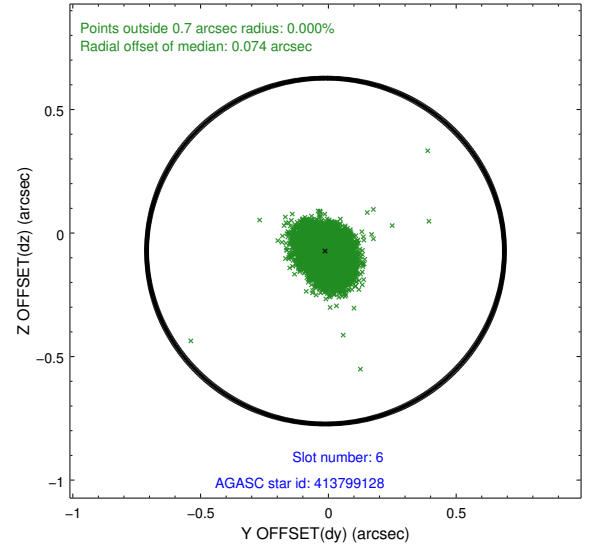
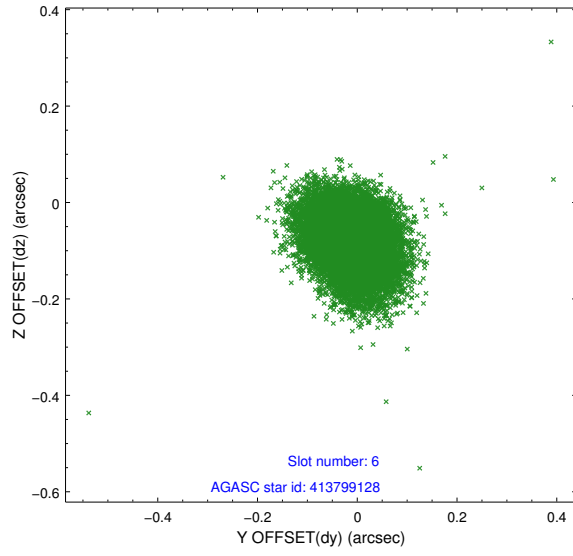
2.4.2 Slot 4



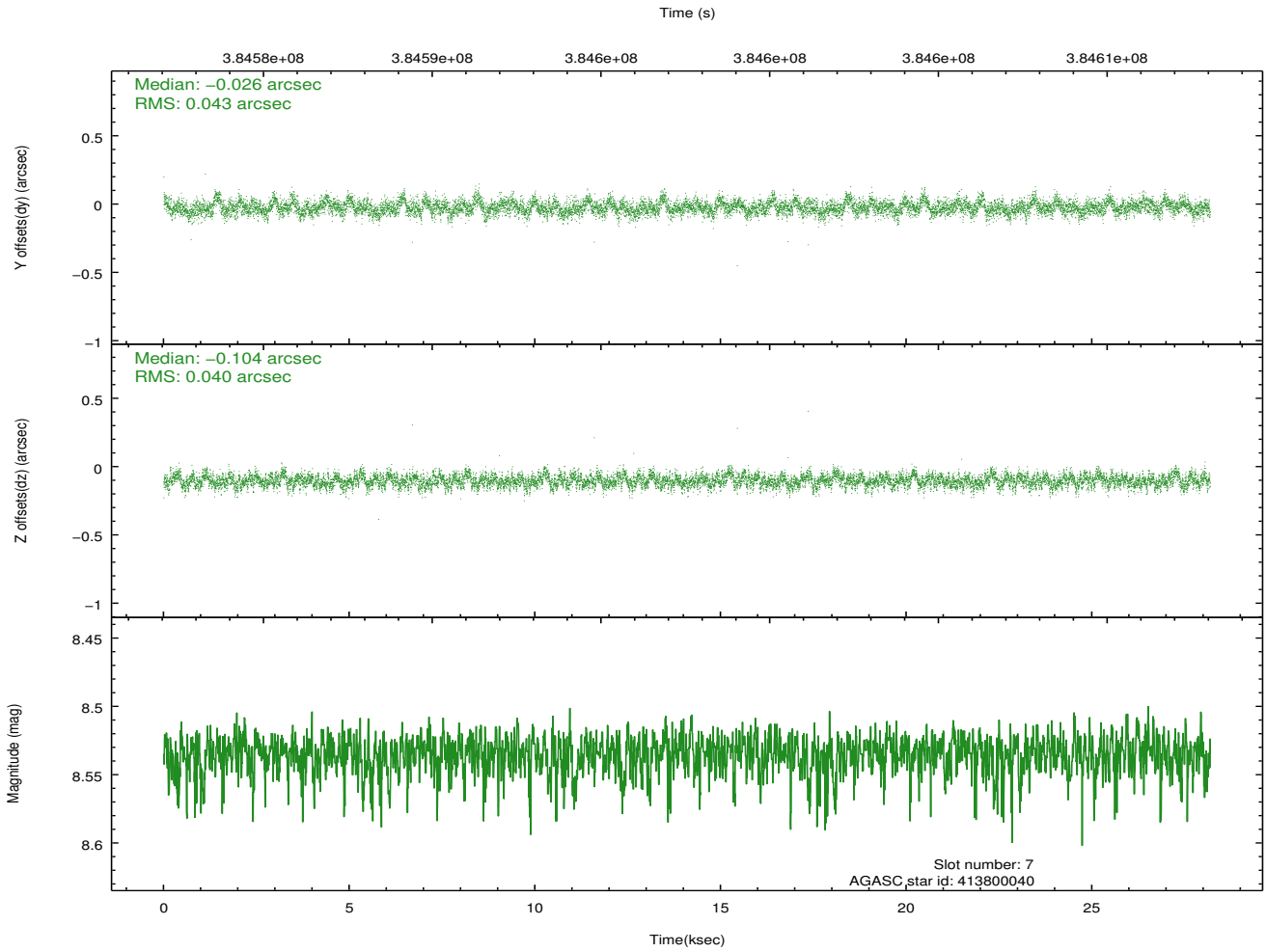
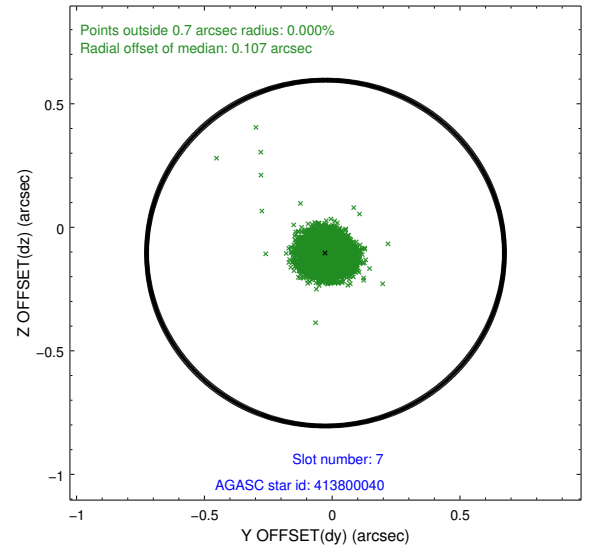
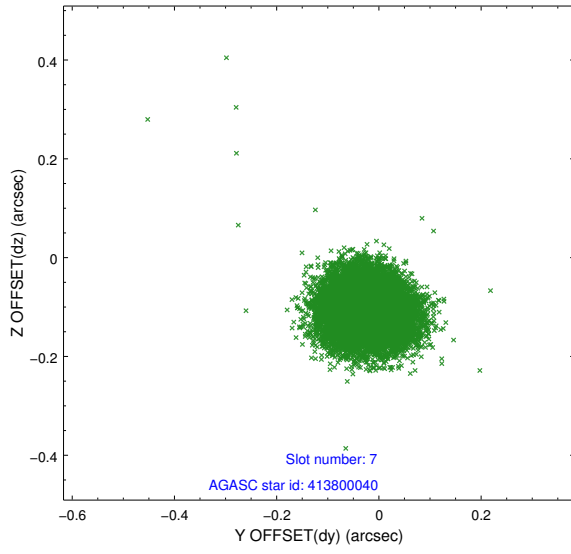
2.4.3 Slot 5



2.4.4 Slot 6

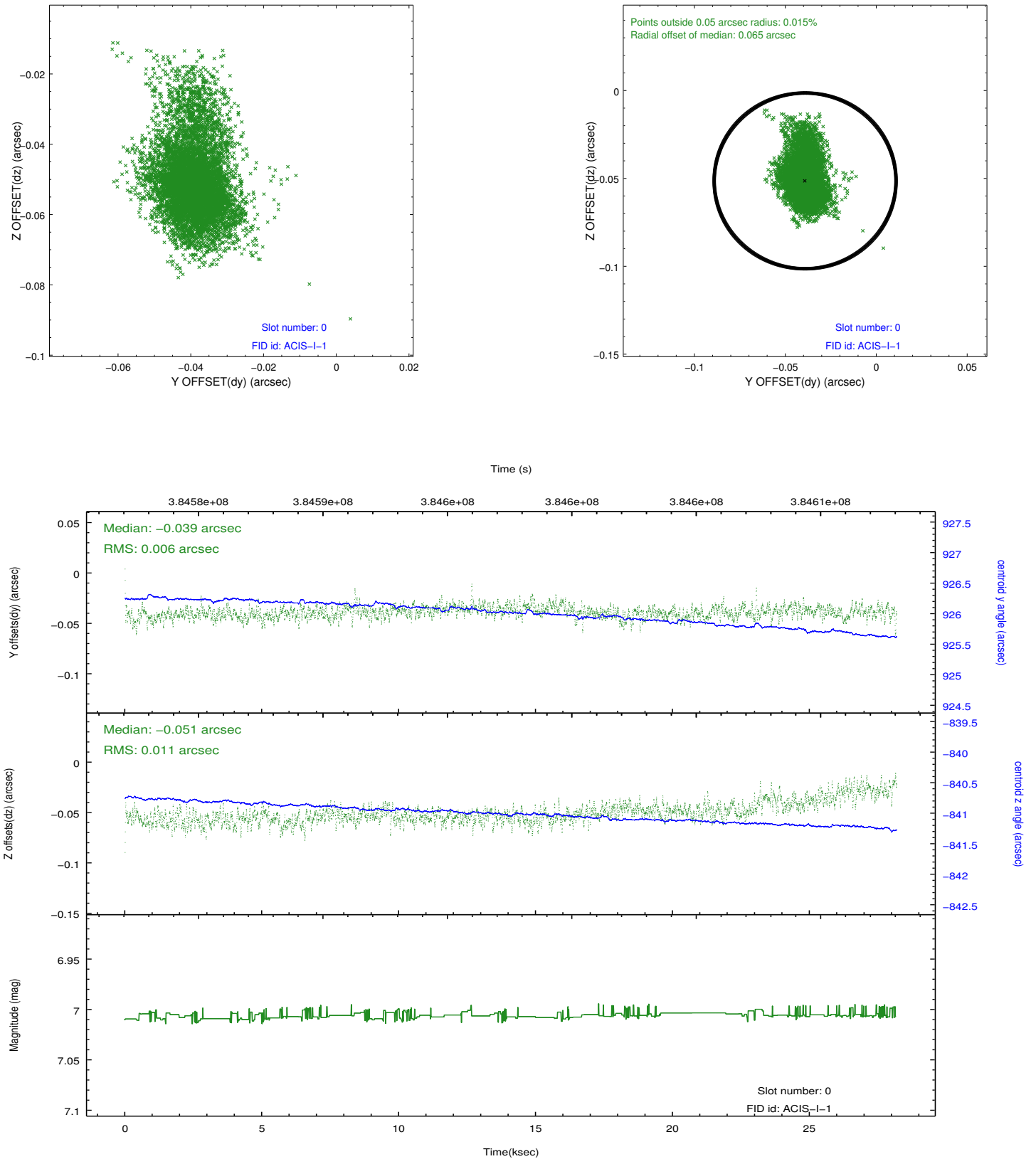


2.4.5 Slot 7

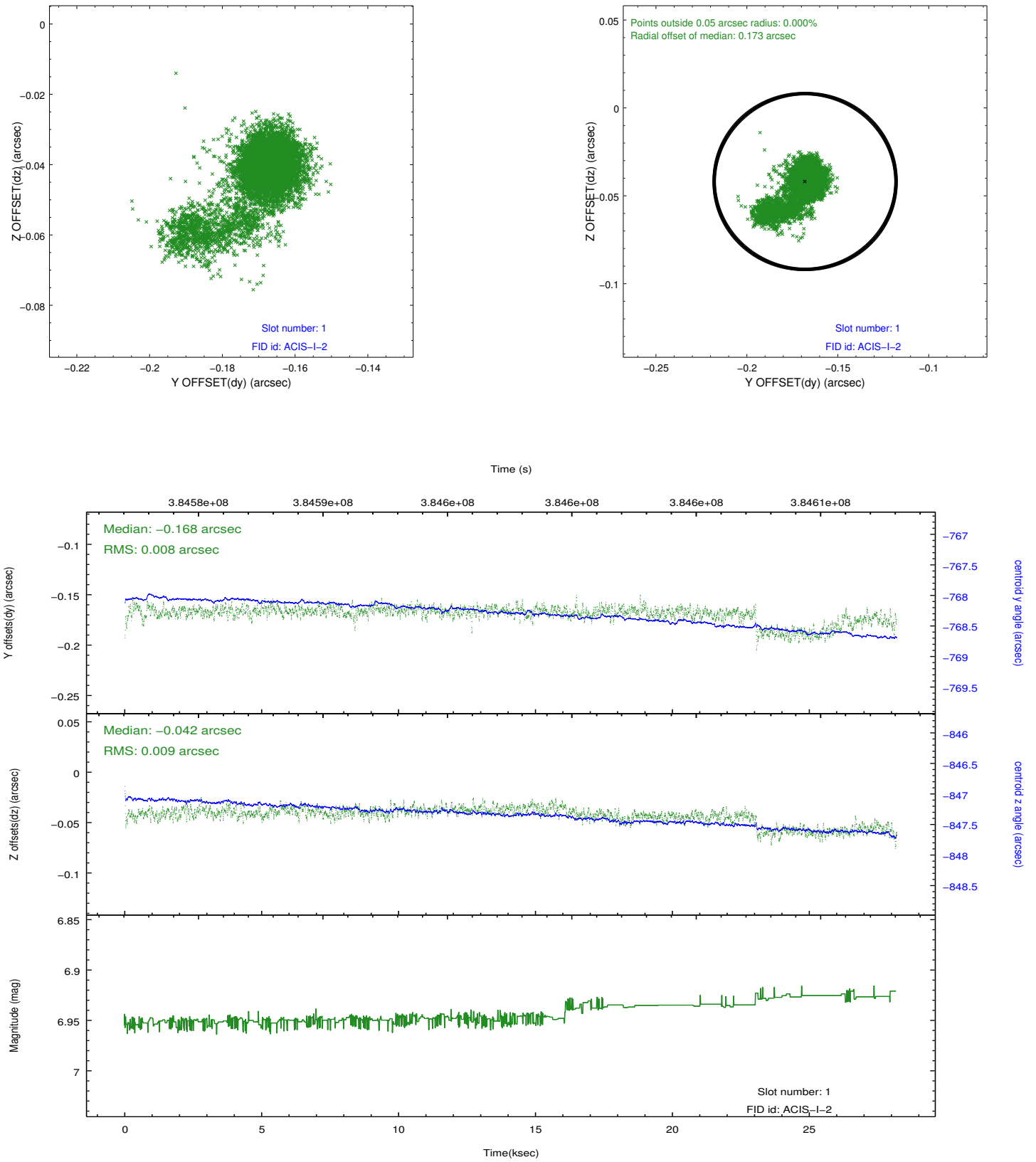


2.5 FID Slots

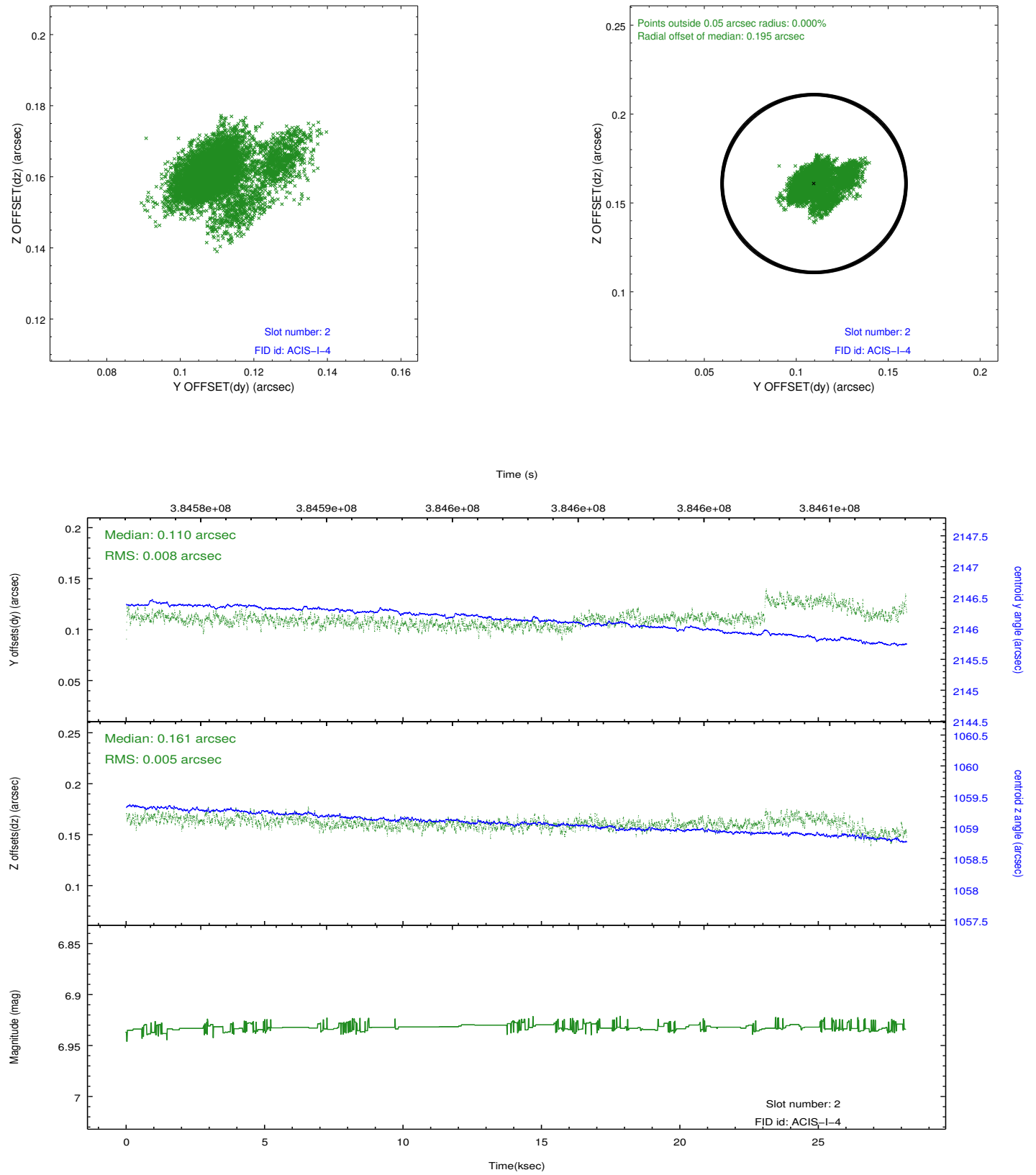
2.5.1 Slot 0



2.5.2 Slot 1



2.5.3 Slot 2



A Summary

A.1 Status

V&V Scientist	Jen Lauer
V&V Date (YYYY-MM-DD)	2012.06.28
V&V Edition	1
V&V Disposition and Status	OK
V&V Charge Time	27.74692603153

A.2 Comments

Preferred roll angle met.