

V&V Reference Report

L2 ASCDS Version : 8.4.4

Observation 10723 - L2 Version 2
Chandra X-Ray Center

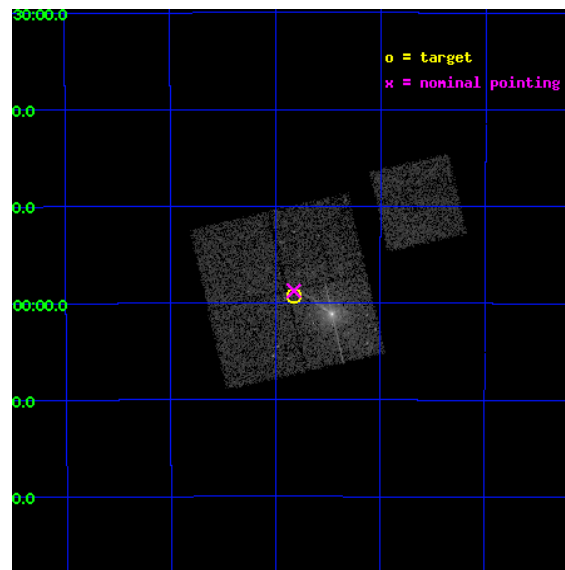
L2 Processing Date : May 28 2012

Contents

1	Front	2
2	OBI	3
2.1	OBI	3
2.1.1	Images	3
2.1.2	Bias	3
2.1.3	Parameters	4
2.1.4	Events	4
2.2	Compared Parameters	5
2.3	Aspect	6
2.4	Star Slots	9
2.4.1	Slot 3	9
2.4.2	Slot 4	10
2.4.3	Slot 5	11
2.4.4	Slot 6	12
2.4.5	Slot 7	13
2.5	FID Slots	14
2.5.1	Slot 0	14
2.5.2	Slot 1	15
2.5.3	Slot 2	16
A	Summary	17
A.1	Status	17
A.2	Comments	17

1 Front

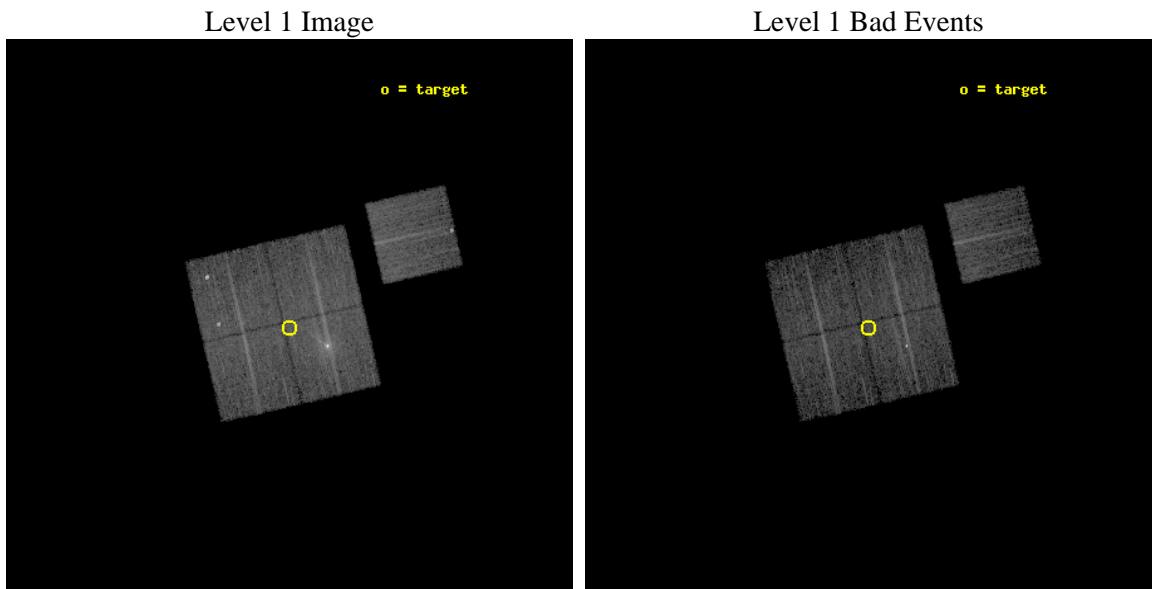
seq_num	701953	Sequence number
obs_id	10723	Observation id
title	Longterm Monitoring of the Centaurus A Jet, ULXs, and Low Mass X-ray Binary Population	Proposal title
observer	Dr. Stephen Murray	Principal investigator
object	Centaurus A	Source name
dtcycle	0	
cycle	P	events from which exps? Prim/Second/Both
ra_targ	201.456917	Observer's specified target RA [deg]
dec_targ	-42.987428	Observer's specified target Dec [deg]
ra_nom	201.45604201157	Nominal RA [deg]
dec_nom	-42.979313068816	Nominal Dec [deg]
roll_nom	76.951320721491	Nominal Roll [deg]
revision	2	Processing version of data
ontime	5152.2000396252	Sum of GTIs [s]
livetime	5084.882753113	Livetime [s]
ontime0	5152.2000396252	Sum of GTIs [s]
ontime1	5152.2000396252	Sum of GTIs [s]
ontime2	5152.2000396252	Sum of GTIs [s]
ontime3	5152.2000396252	Sum of GTIs [s]
ontime6	5152.2000396252	Sum of GTIs [s]
l2events	43489	Number of level 2 events



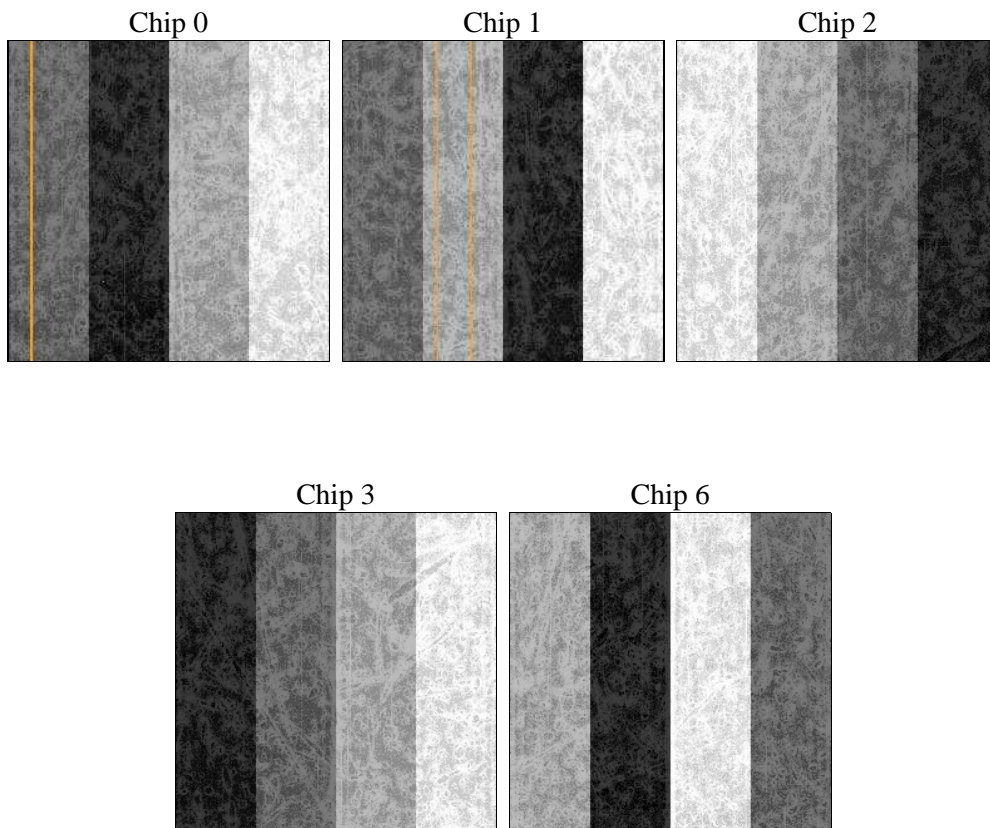
2 OBI

2.1 OBI

2.1.1 Images



2.1.2 Bias



2.1.3 Parameters

obi_num	0	Obi number	sched_exp_time	5000.000000	[s] Scheduled observation exposure time
ascdsver	8.4.4	Processing system revision	ontime	5152.2000396252	Sum of GTIs [s]
caldsver	4.4.9	 	ontime0	5152.2000396252	Sum of GTIs [s]
date	2012-05-28T11:54:11	Date and time of file creation	ontime1	5152.2000396252	Sum of GTIs [s]
revision	2	Processing version of data	ontime2	5152.2000396252	Sum of GTIs [s]
			ontime3	5152.2000396252	Sum of GTIs [s]
			ontime6	5152.2000396252	Sum of GTIs [s]
			l1events	291197	Number of level 1 events

2.1.4 Events

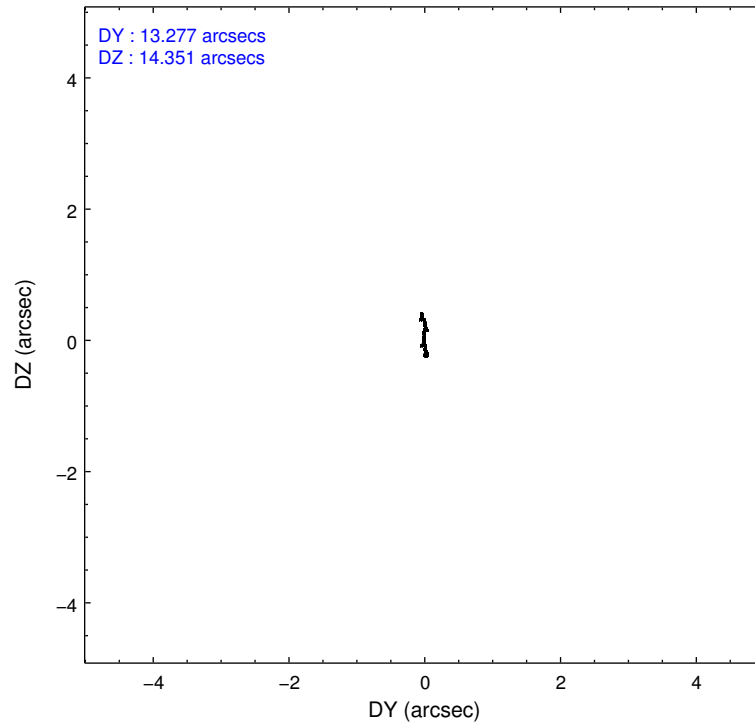
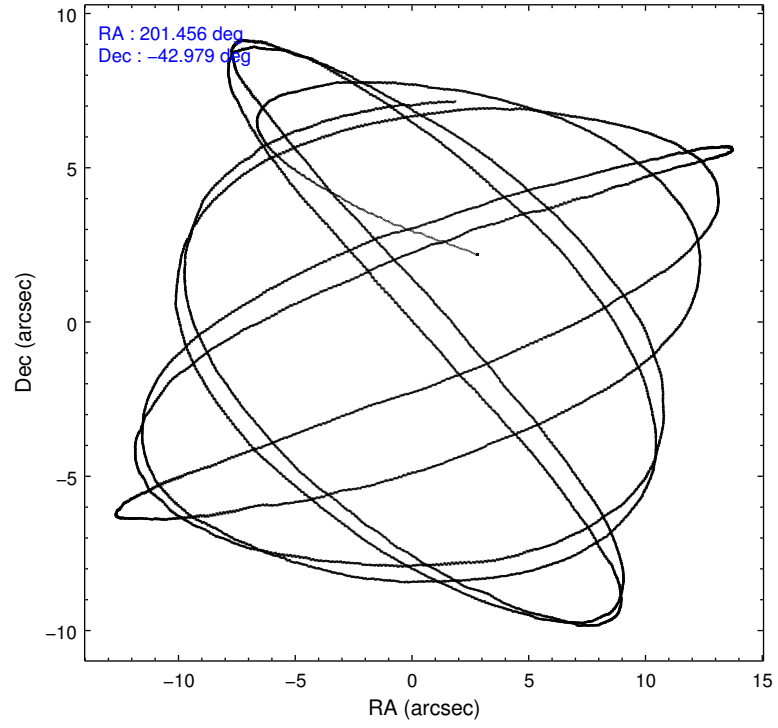
	ccd 0	ccd 1	ccd 2	ccd 3	ccd 6
level 1 events	55357	51897	55379	73029	55535
rejected events	43793	44389	48572	52004	48067
rejected %	79%	85%	87%	71%	86%

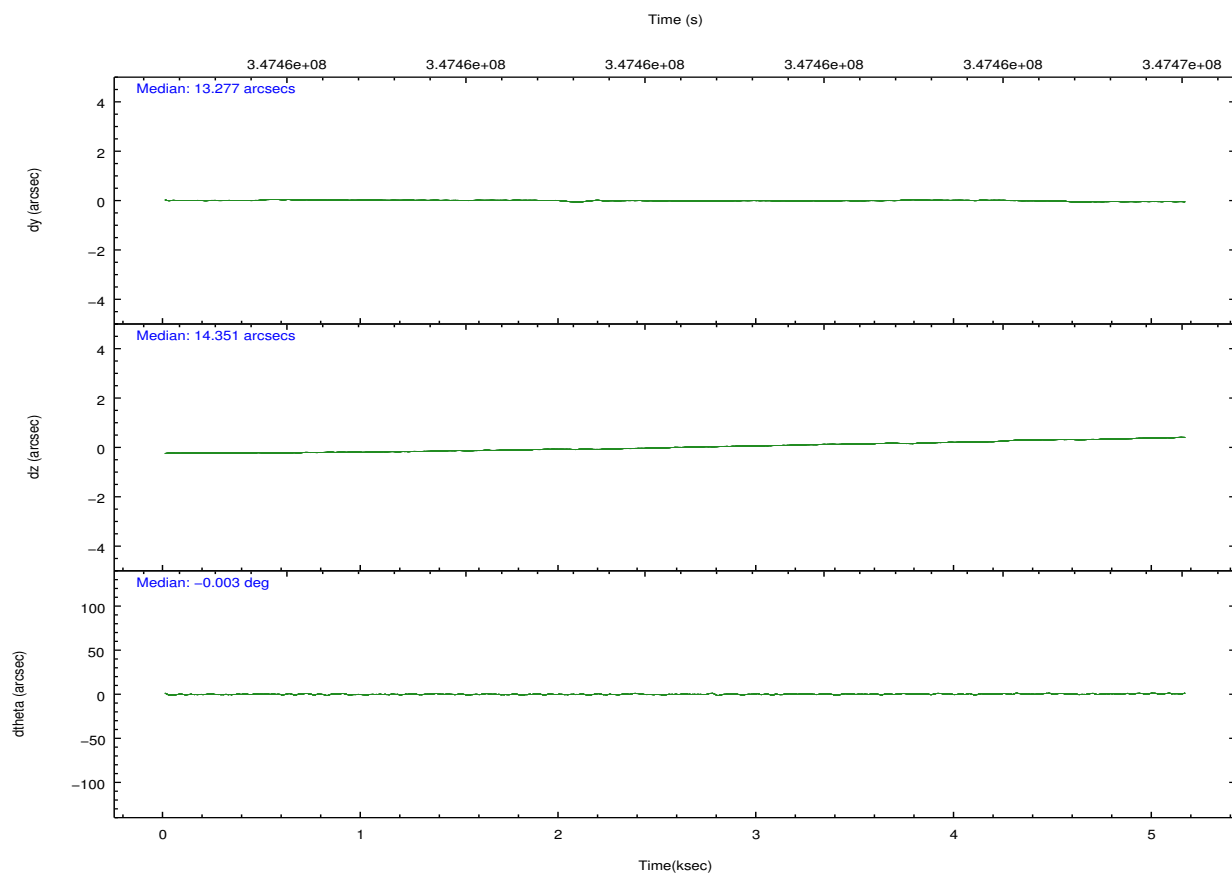
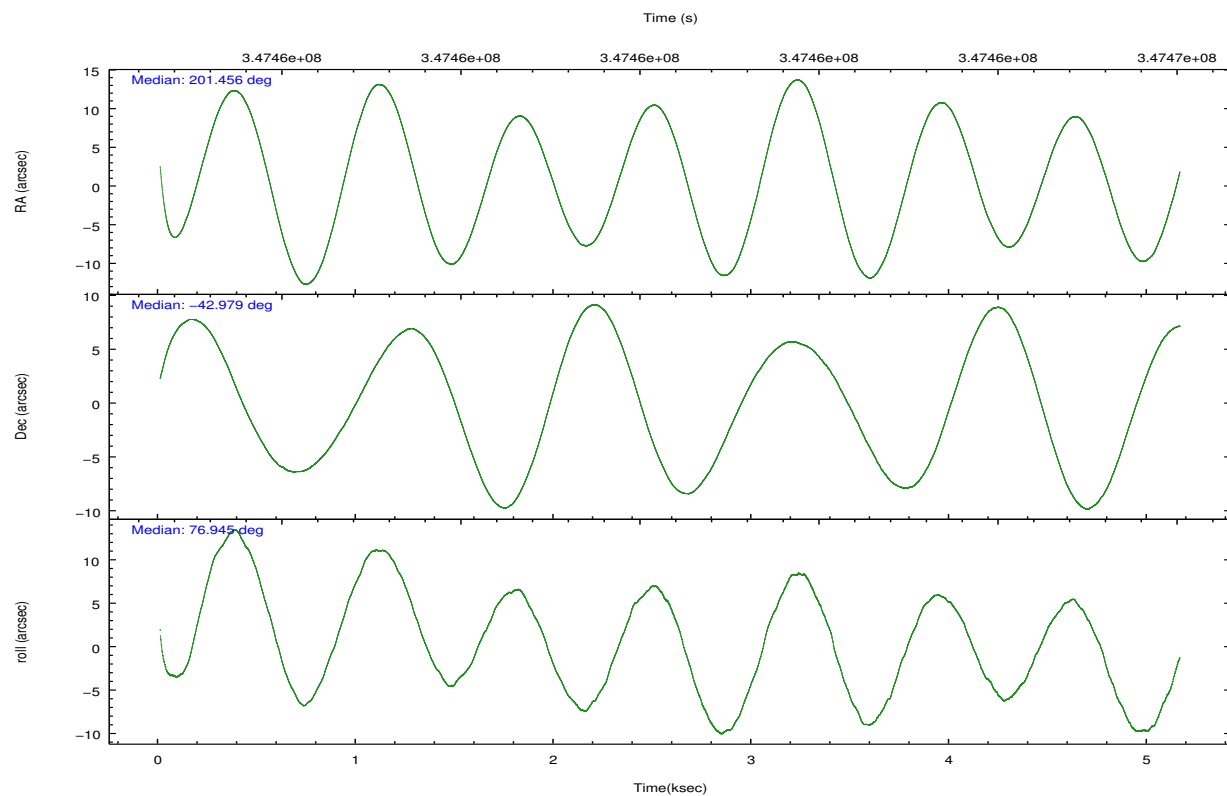
	ccd 0	ccd 1	ccd 2	ccd 3	ccd 6
grade 0 events	6406	3328	3427	12659	3640
	11%	6%	6%	17%	6%
grade 1 events	50	44	41	820	28
	0%	0%	0%	1%	0%
grade 2 events	3091	1838	1427	3481	1473
	5%	3%	2%	4%	2%
grade 3 events	679	674	585	1569	625
	1%	1%	1%	2%	1%
grade 4 events	584	698	623	1413	626
	1%	1%	1%	1%	1%
grade 5 events	2232	2452	2315	3461	2553
	4%	4%	4%	4%	4%
grade 6 events	1254	1503	1086	2773	1374
	2%	2%	1%	3%	2%
grade 7 events	41061	41360	45875	46853	45216
	74%	79%	82%	64%	81%

2.2 Compared Parameters

Parameter	Planned	Actual	Parameter	Planned	Actual
Instrument	ACIS	ACIS	Obspar format version number	7	7
Detector	ACIS-01236	ACIS-01236	Obspar file type	PREDICTED	ACTUAL
Grating	NONE	NONE	Obspar update status	NONE	UPDATED
Data mode	FAINT	FAINT	Number of optional ACIS chips dropped	0	0
Observation mode	POINTING	POINTING	On-chip summing requested	N	N
[deg] Pointing RA	201.467202	201.4560420115737	Subarray requested	NONE	NONE
[deg] Pointing Dec	-43.005645	-42.97931306881559	Alternating exposures requested	N	N
[deg] Pointing Roll	76.750257	76.95132072149134	[s] Primary exposure time	0.000000	3.1
[mm] SIM focus pos	-0.782348	-0.7809083437167272			
[mm] SIM defocus	0	0.001439871863259334			
[mm] SIM translation stage pos	-233.592463	-233.5874344608287			
[mm] SIM translation stage offset	0	-0.005018542100998502			
[s] Observation start time (MET)	347460748.184000	347459603.95023			
Observation start date	2009-01-04T12:51:22	2009-01-04T12:33:23			
[s] Observation end time (MET)	347465748.184000	347466918.86309			
Observation end date	2009-01-04T14:14:42	2009-01-04T14:35:18			
Read mode	TIMED	TIMED			

2.3 Aspect



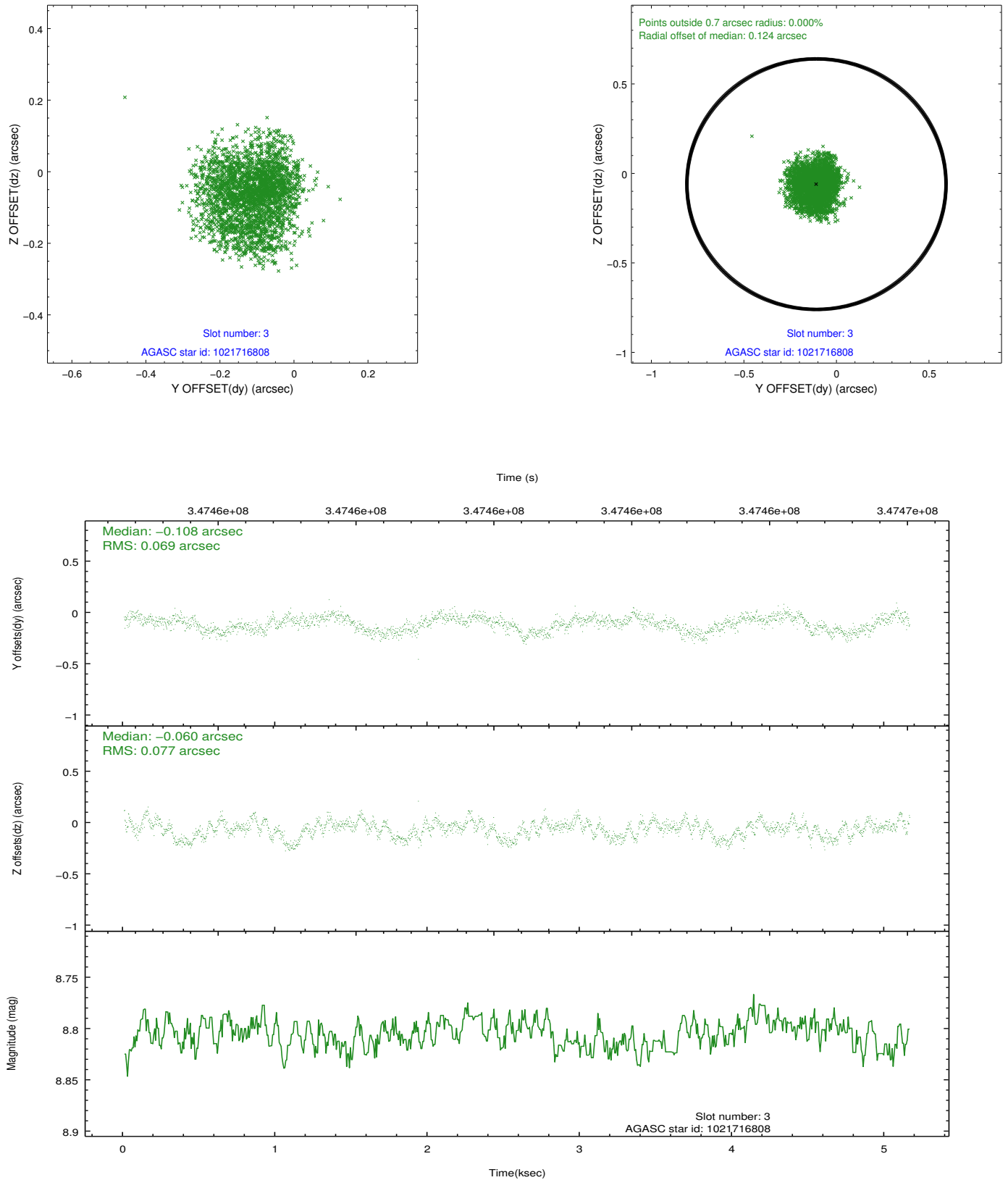


Slot Statistics

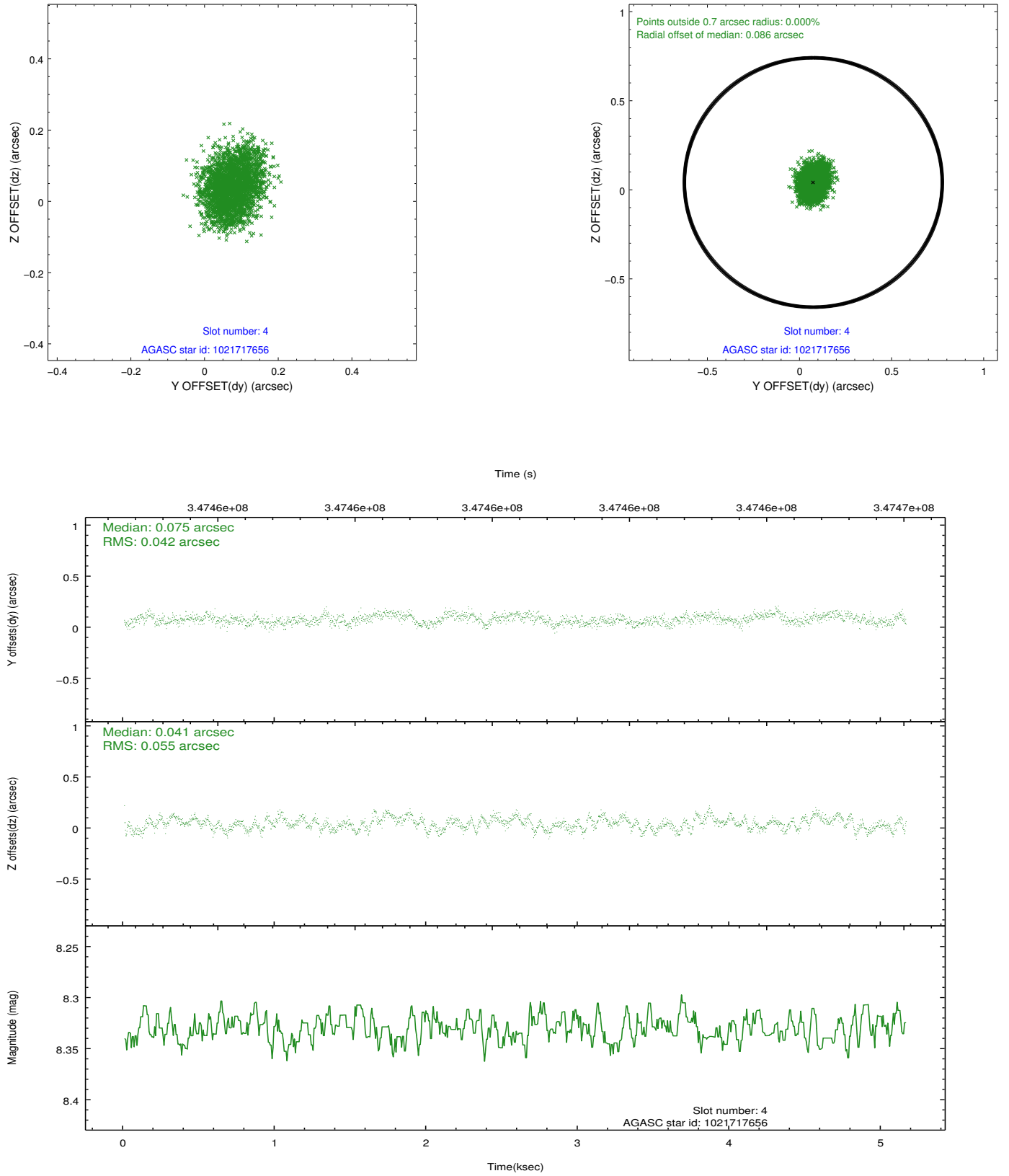
slot	status	id	mag	n_pts	med_dy	med_dz	dr1	dr2	ra	dec	mean_y	mean_z
0	FID	ACIS-I-1	7.15	1258	0.042	-0.001	0.009	0.016	0.000000	0.000000	926.29	-837.95
1	FID	ACIS-I-5	7.13	1258	-0.220	0.046	0.006	0.011	0.000000	0.000000	-1821.46	1058.96
2	FID	ACIS-I-6	7.15	1258	0.087	0.026	0.011	0.019	0.000000	0.000000	390.56	1704.81
3	GUIDE	1021716808	8.81	2515	-0.108	-0.060	0.114	0.172	200.901189	-42.531395	1312.37	1851.94
4	GUIDE	1021717656	8.33	2515	0.075	0.041	0.075	0.118	201.139642	-43.082878	-469.15	774.93
5	GUIDE	1021721672	9.56	2512	0.216	0.212	0.111	0.179	201.740358	-43.079729	-96.07	-759.99
6	GUIDE	1022235840	9.45	2509	-0.168	0.176	0.103	0.173	201.679306	-43.544276	-1761.37	-983.69
7	GUIDE	1021719704	7.58	2516	-0.012	-0.368	0.070	0.119	200.511976	-43.050426	-747.82	2404.77

2.4 Star Slots

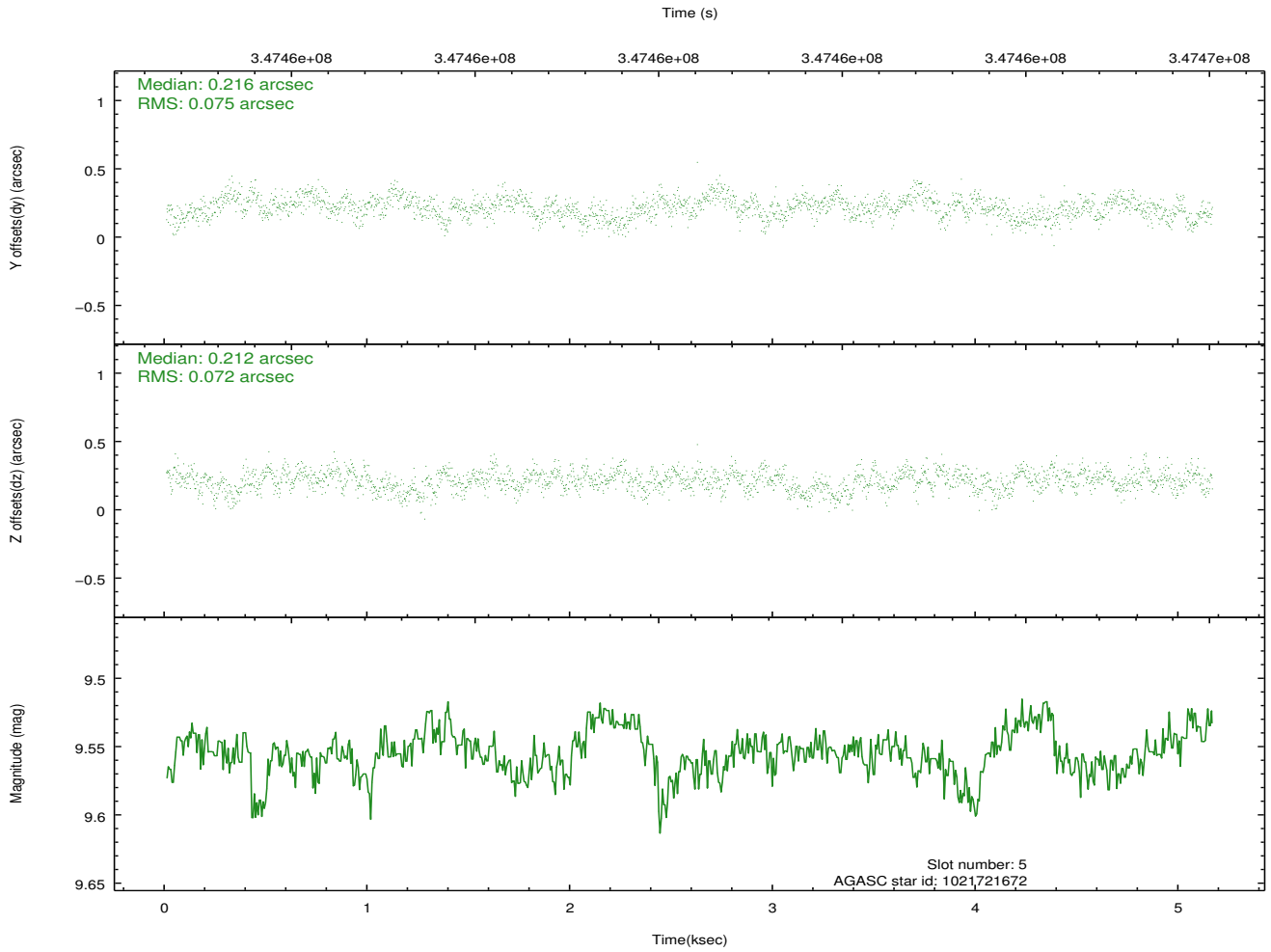
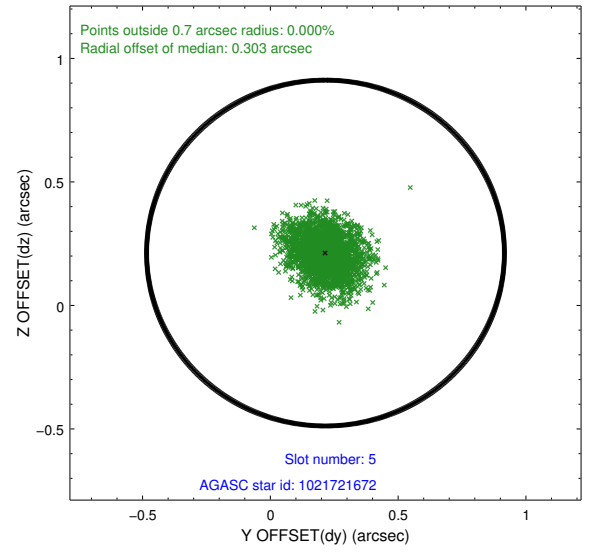
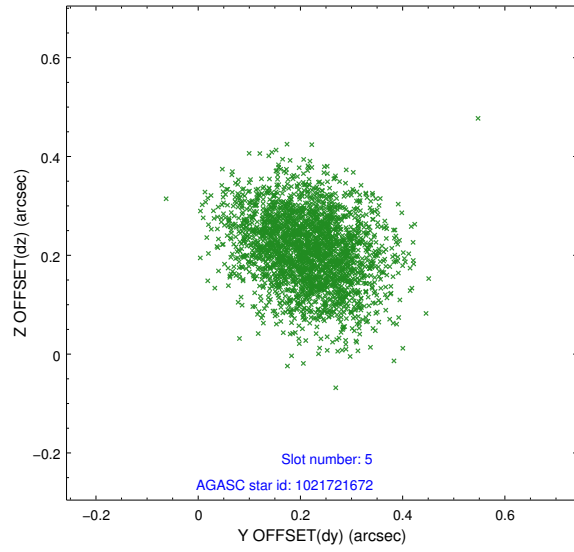
2.4.1 Slot 3



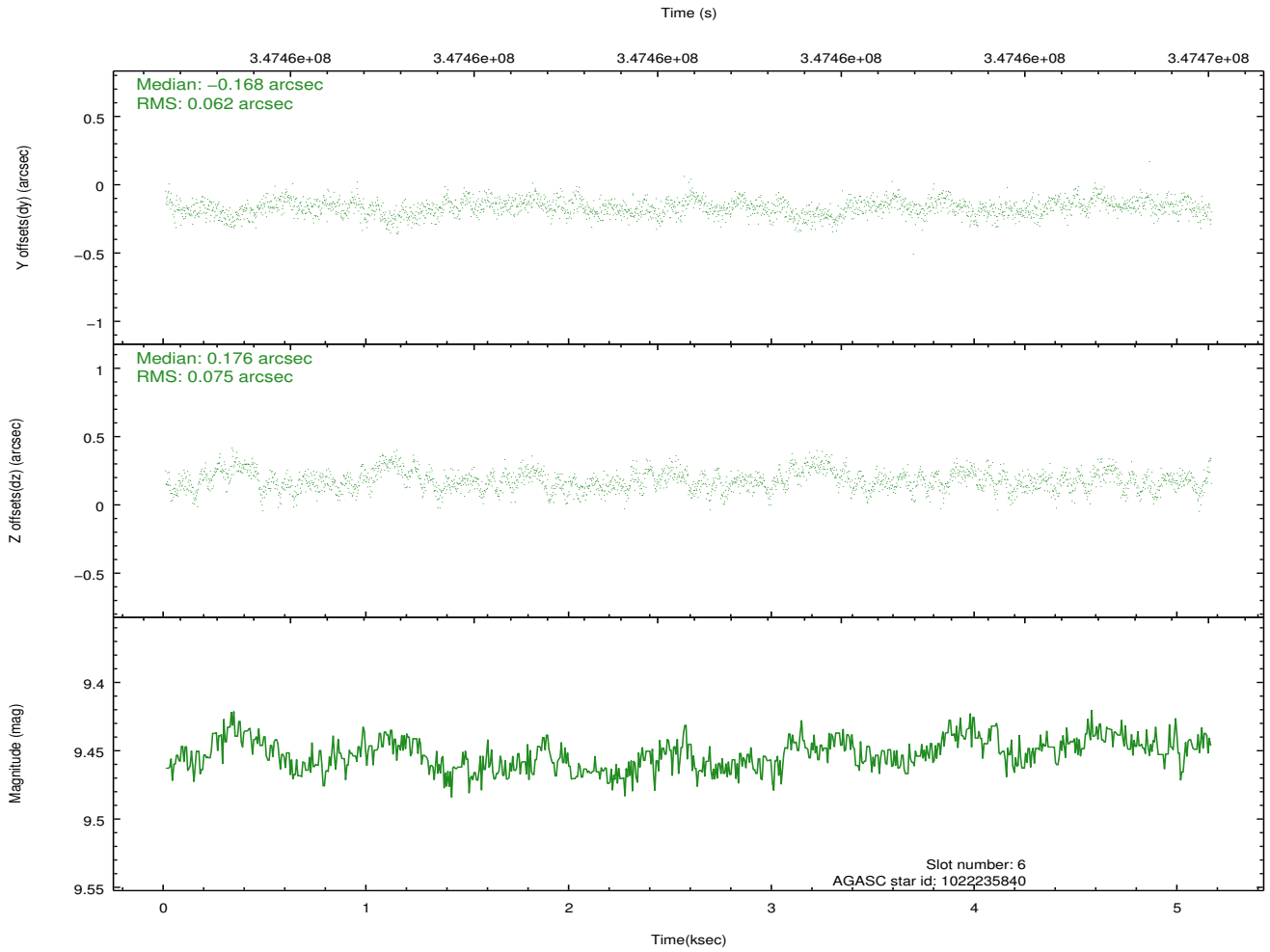
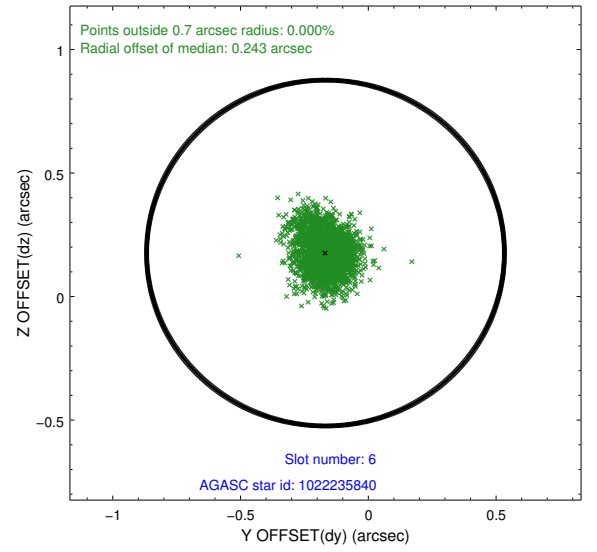
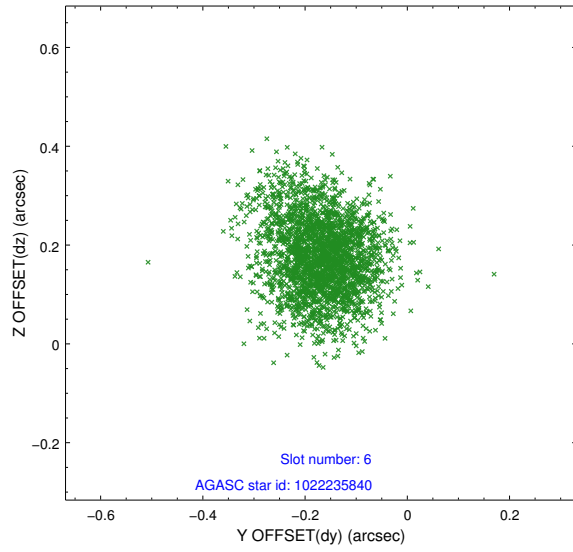
2.4.2 Slot 4



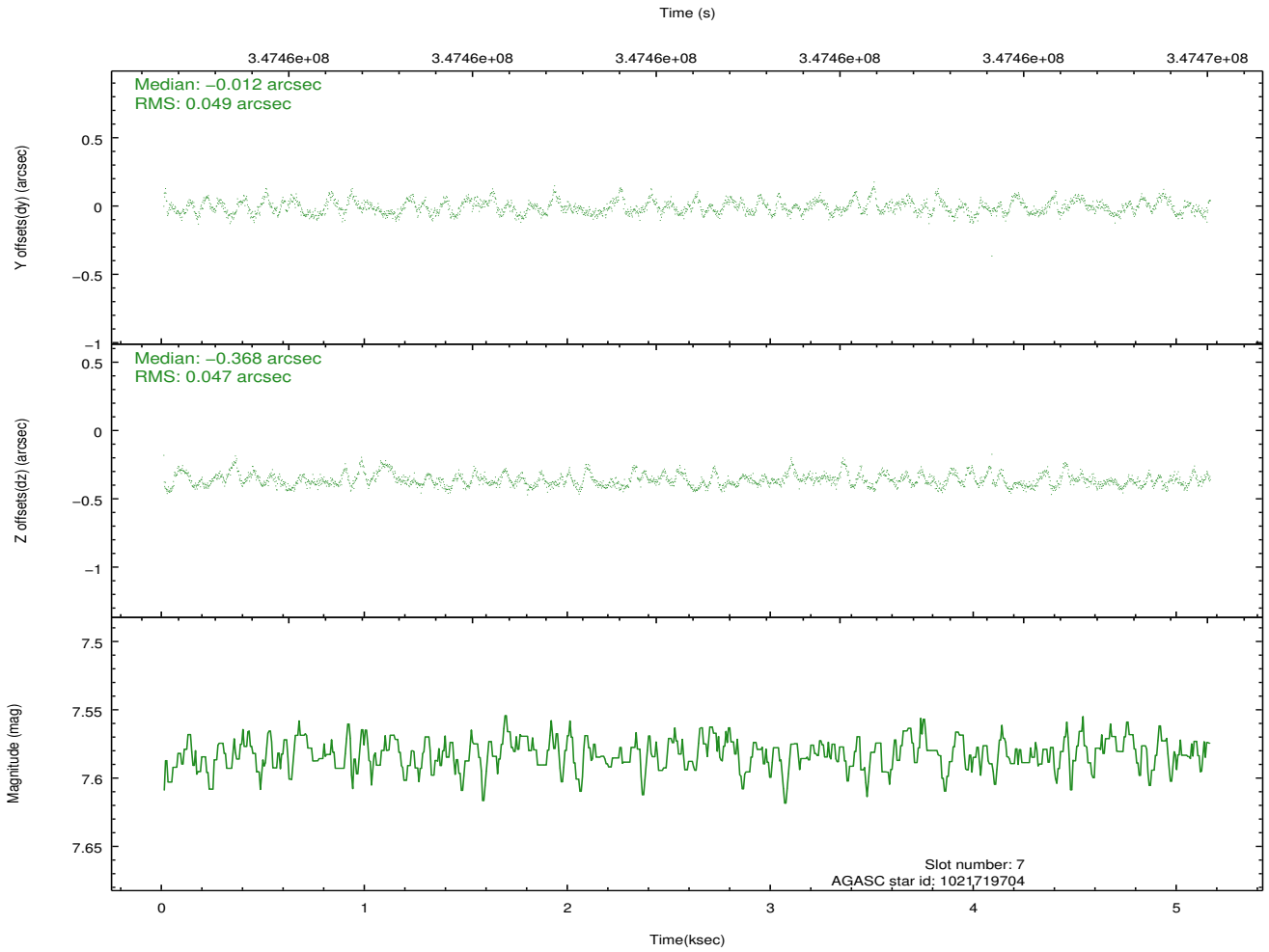
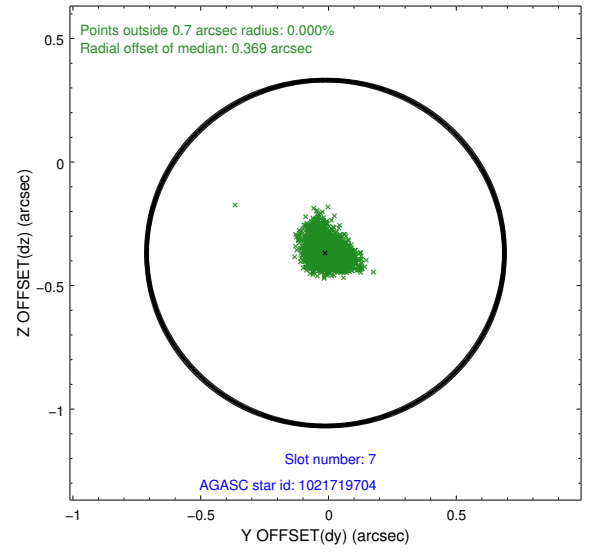
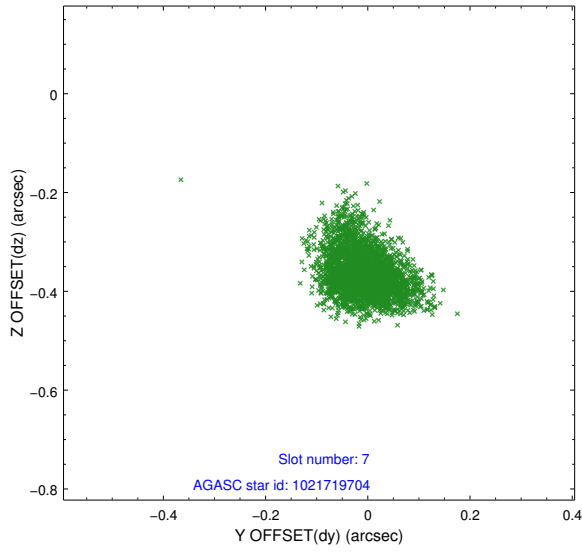
2.4.3 Slot 5



2.4.4 Slot 6

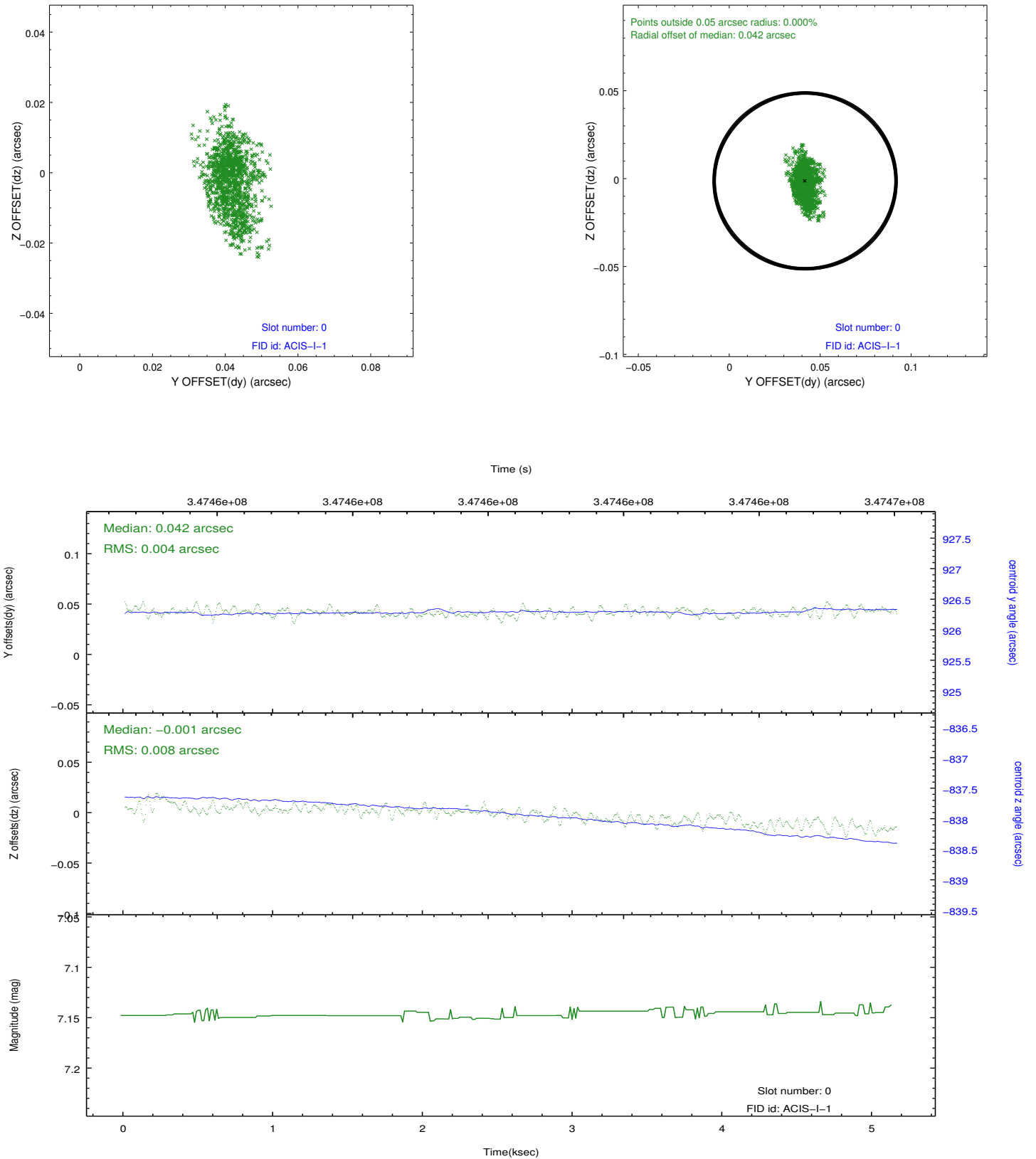


2.4.5 Slot 7

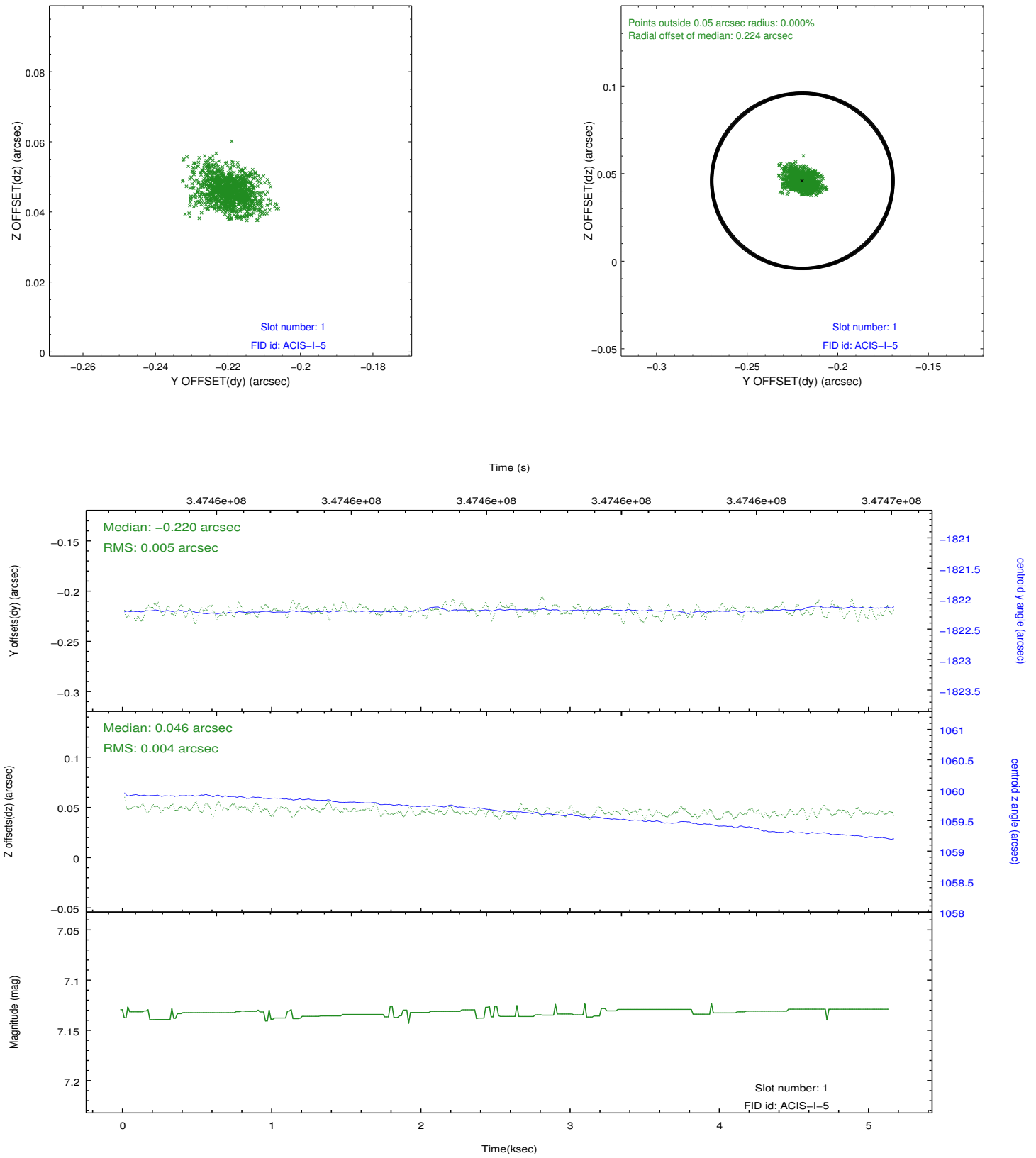


2.5 FID Slots

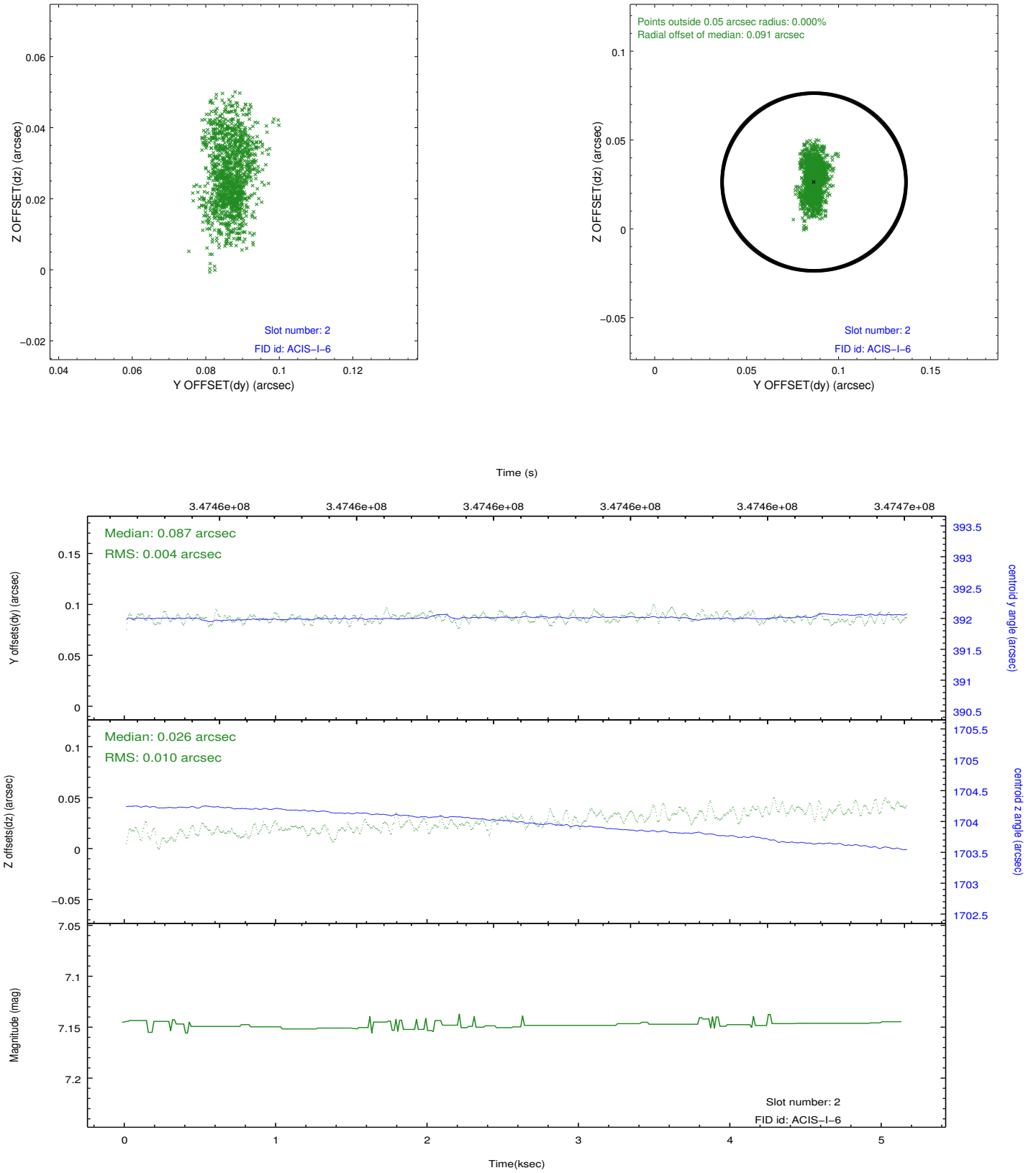
2.5.1 Slot 0



2.5.2 Slot 1



2.5.3 Slot 2



A Summary

A.1 Status

V&V Scientist	Jen Lauer
V&V Date (YYYY-MM-DD)	2012.06.01
V&V Edition	1
V&V Disposition and Status	OK
V&V Charge Time	5.15220003

A.2 Comments