

V&V Reference Report

L2 ASCDS Version : 8.4.4

Observation 10363 - L2 Version 2
Chandra X-Ray Center

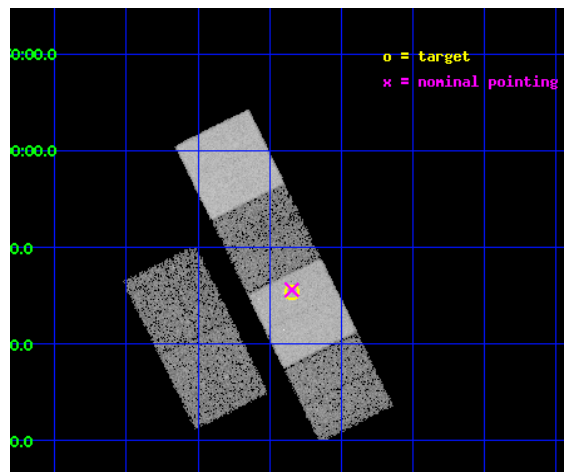
L2 Processing Date : May 30 2012

Contents

1	Front	2
2	OBI	3
2.1	OBI	3
2.1.1	Images	3
2.1.2	Bias	3
2.1.3	Parameters	4
2.1.4	Events	4
2.2	Compared Parameters	5
2.3	Aspect	6
2.4	Star Slots	9
2.4.1	Slot 3	9
2.4.2	Slot 4	10
2.4.3	Slot 5	11
2.4.4	Slot 6	12
2.4.5	Slot 7	13
2.5	FID Slots	14
2.5.1	Slot 0	14
2.5.2	Slot 1	15
2.5.3	Slot 2	16
A	Summary	17
A.1	Status	17
A.2	Comments	17

1 Front

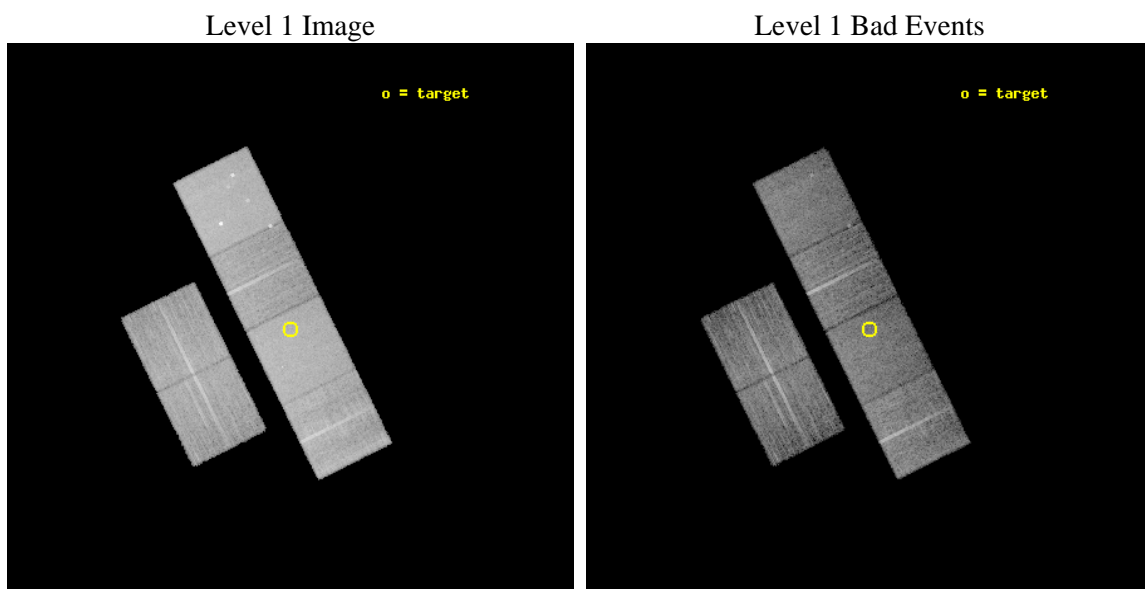
seq_num	701906	Sequence number
obs_id	10363	Observation id
title	Testing the Radiative-Driving Hypothesis of Quasar Outflows	Propos
observer	Dr. Rajib Ganguly	Principal investigator
object	SDSS J1128-0114	Source name
dtcycle	0	
cycle	P	events from which exps? Prim/Second/Both
ra_targ	172.086667	Observer's specified target RA [deg]
dec_targ	-1.244806	Observer's specified target Dec [deg]
ra_nom	172.08618403461	Nominal RA [deg]
dec_nom	-1.2399504586172	Nominal Dec [deg]
roll_nom	63.6566214359	Nominal Roll [deg]
revision	2	Processing version of data
ontime	8739.0359164476	Sum of GTIs [s]
livetime	8628.3769816579	Livetime [s]
ontime2	8745.5178973675	Sum of GTIs [s]
ontime3	8745.5179469585	Sum of GTIs [s]
ontime5	8748.7589274645	Sum of GTIs [s]
ontime6	8745.5178973675	Sum of GTIs [s]
ontime7	8739.0359164476	Sum of GTIs [s]
ontime8	8745.5178973675	Sum of GTIs [s]
l2events	152648	Number of level 2 events



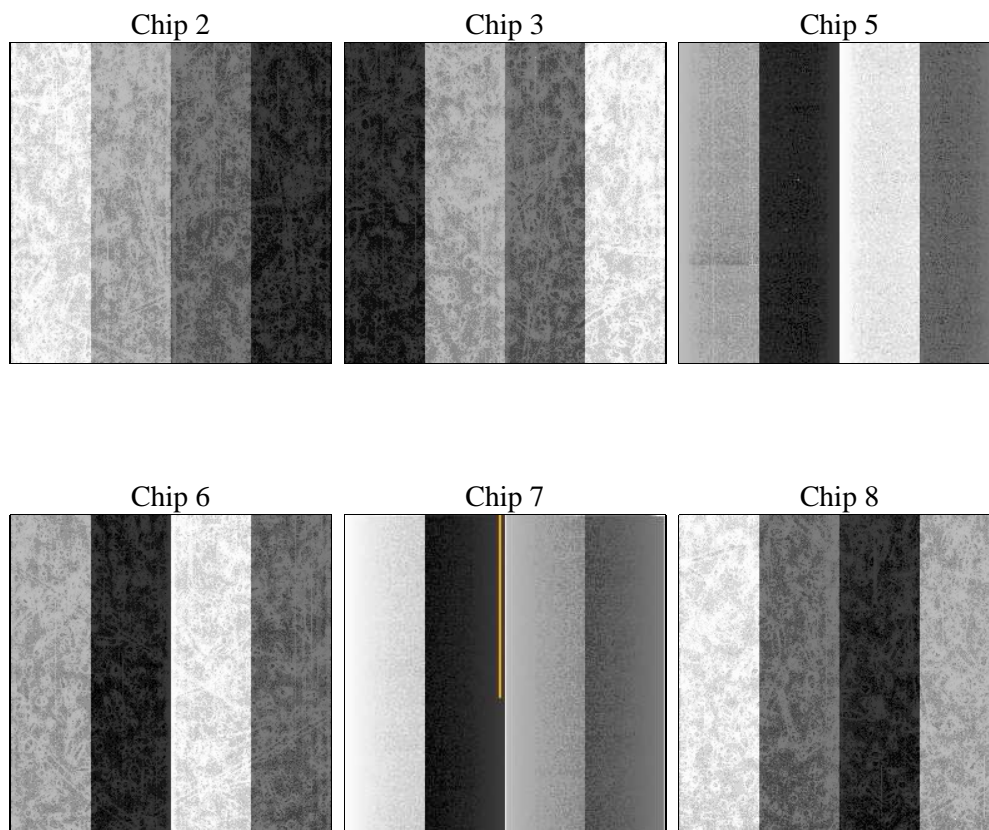
2 OBI

2.1 OBI

2.1.1 Images



2.1.2 Bias



2.1.3 Parameters

obi_num	0	Obi number	sched_exp_time	8800.000000	[s] Scheduled observation exposure time
ascdsver	8.4.4	Processing system revision	ontime	8739.0359164476	Sum of GTIs [s]
caldsver	4.4.9	 	ontime2	8745.5178973675	Sum of GTIs [s]
date	2012-05-30T23:48:28	Date and time of file creation	ontime3	8745.5179469585	Sum of GTIs [s]
revision	2	Processing version of data	ontime5	8748.7589274645	Sum of GTIs [s]
			ontime6	8745.5178973675	Sum of GTIs [s]
			ontime7	8739.0359164476	Sum of GTIs [s]
			ontime8	8745.5178973675	Sum of GTIs [s]
			l1events	658914	Number of level 1 events

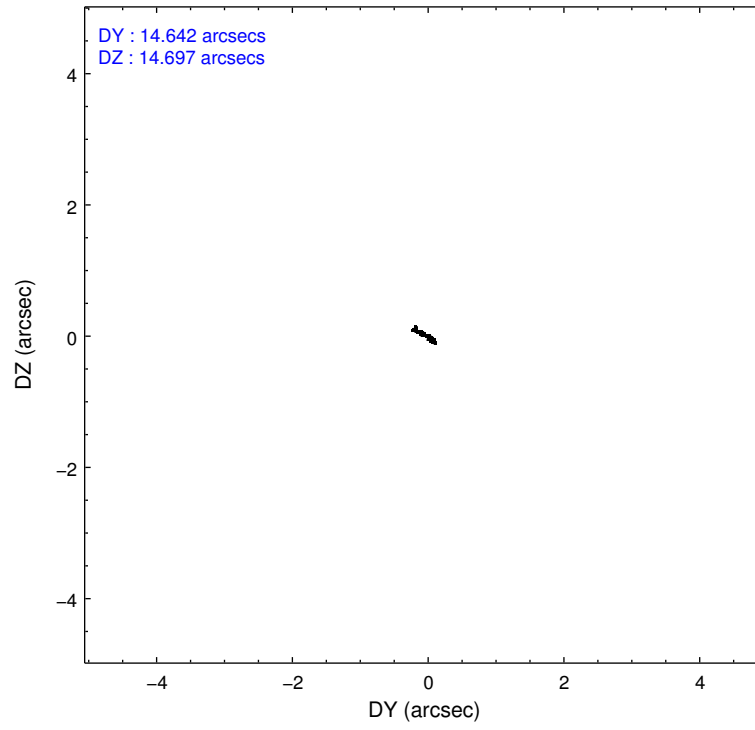
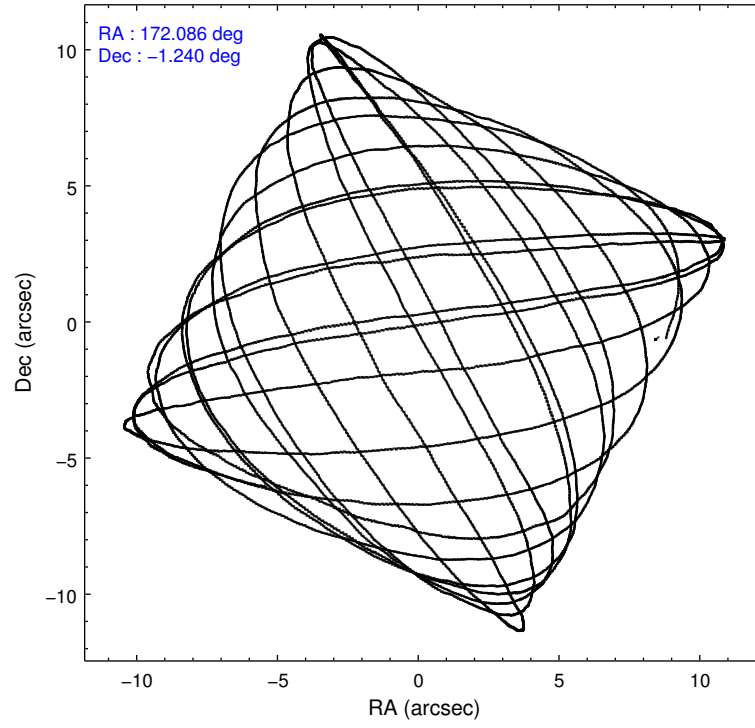
2.1.4 Events

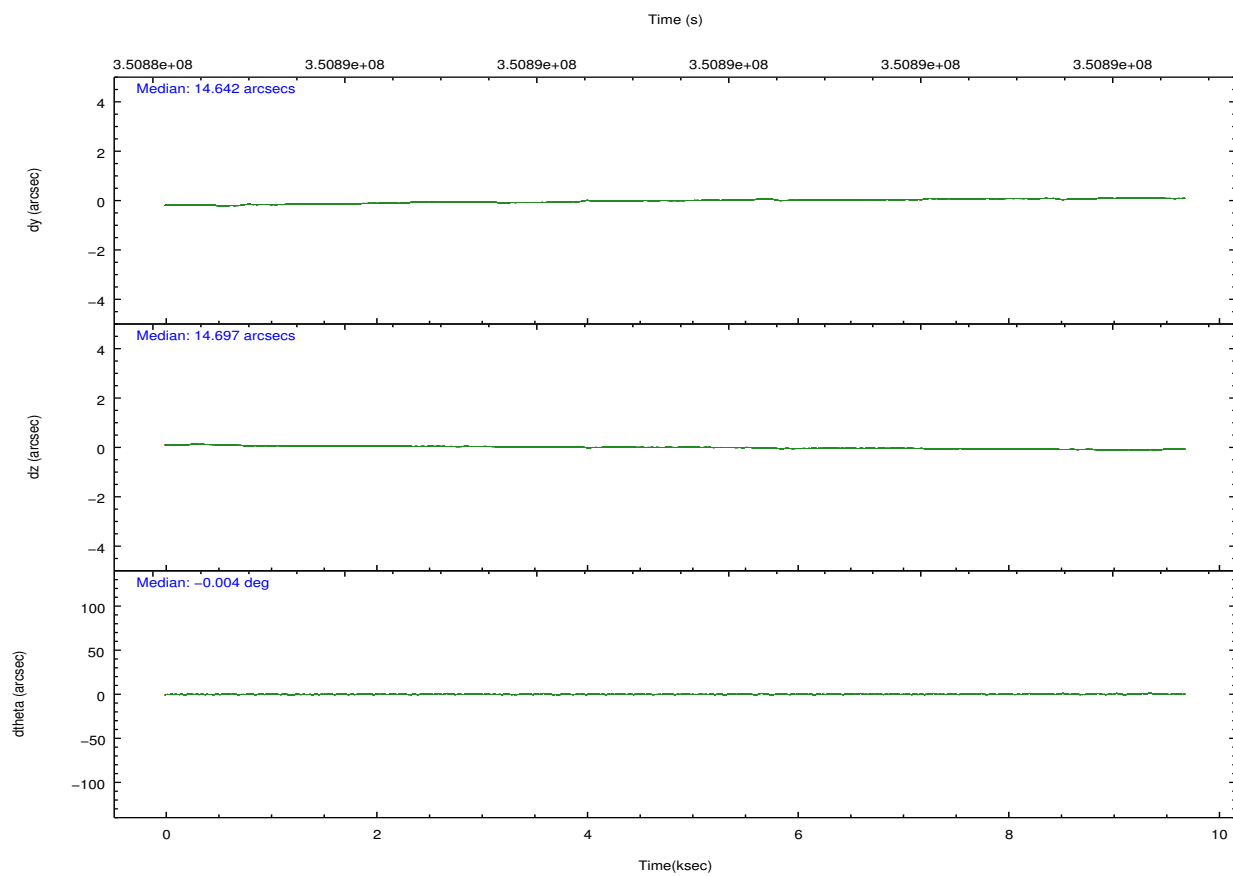
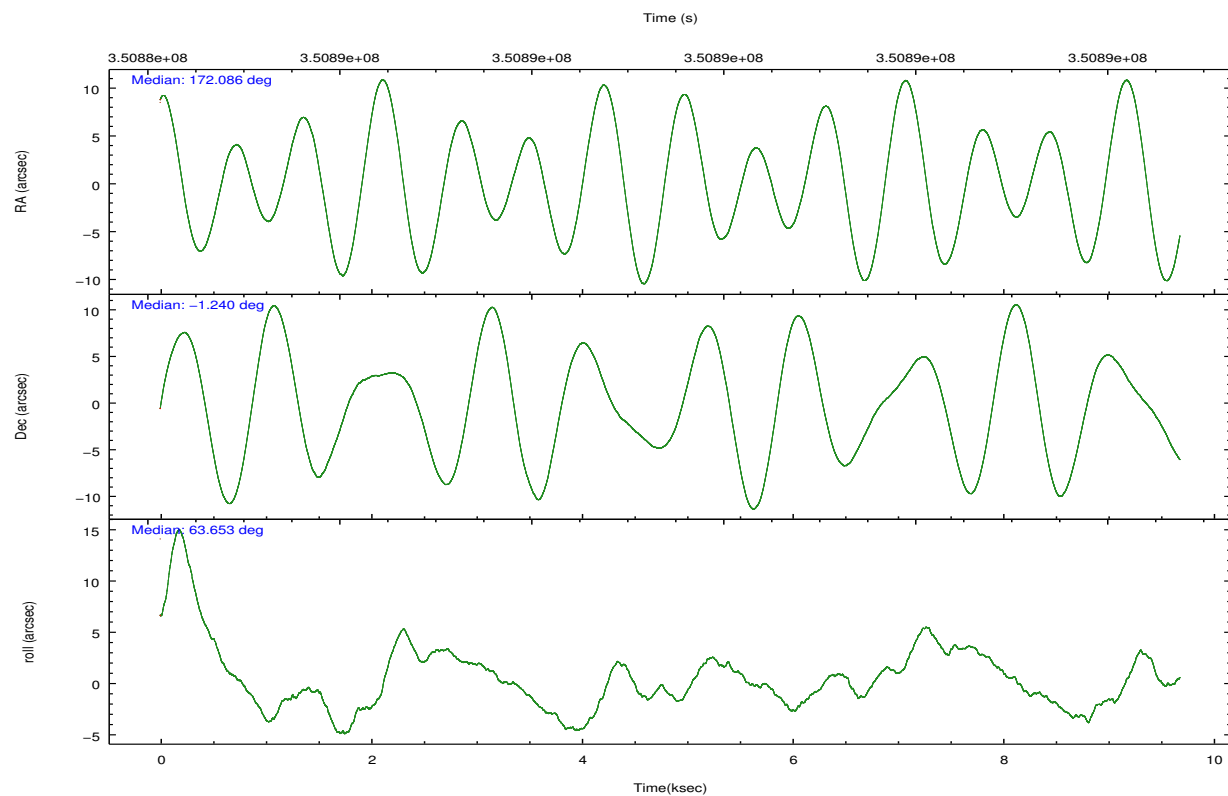
	ccd 2	ccd 3	ccd 5	ccd 6	ccd 7	ccd 8		ccd 2	ccd 3	ccd 5	ccd 6	ccd 7	ccd 8
level 1 events	91937	88272	144262	88469	127571	118403	grade 0 events	4480	4816	7276	4329	4479	8718
rejected events	81383	77317	77272	77483	74885	90478		4%	5%	5%	4%	3%	7%
rejected %	88%	87%	53%	87%	58%	76%	grade 1 events	61	52	365	52	127	86
								0%	0%	0%	0%	0%	0%
							grade 2 events	2378	2088	20385	2446	10805	6384
								2%	2%	14%	2%	8%	5%
							grade 3 events	934	984	2299	1034	4275	2894
								1%	1%	1%	1%	3%	2%
							grade 4 events	957	1068	2197	1005	4393	2712
								1%	1%	1%	1%	3%	2%
							grade 5 events	3746	4283	10069	4359	11716	5715
								4%	4%	6%	4%	9%	4%
							grade 6 events	1808	2001	34852	2178	28805	7235
								1%	2%	24%	2%	22%	6%
							grade 7 events	77573	72980	66819	73066	62971	84659
								84%	82%	46%	82%	49%	71%

2.2 Compared Parameters

Parameter	Planned	Actual	Parameter	Planned	Actual
Instrument	ACIS	ACIS	Obspar format version number	7	7
Detector	ACIS-235678	ACIS-235678	Obspar file type	PREDICTED	ACTUAL
Grating	NONE	NONE	Obspar update status	NONE	UPDATED
Data mode	FAINT	FAINT	CCD I0 on	N	N
Observation mode	POINTING	POINTING	CCD I1 on	N	N
[deg] Pointing RA	172.088340	172.0861840346139	CCD I2 on	O1	Y
[deg] Pointing Dec	-1.267240	-1.239950458617185	CCD I3 on	O2	Y
[deg] Pointing Roll	63.500033	63.65662143590025	CCD S0 on	N	N
[mm] SIM focus pos	-0.684267	-0.6828225247311905	CCD S1 on	Y	Y
[mm] SIM defocus	0	0.001444936568705701	CCD S2 on	Y	Y
[mm] SIM translation stage pos	-190.132523	-190.1425803651734	CCD S3 on	Y	Y
[mm] SIM translation stage offset	0	0.01005778216563158	CCD S4 on	Y	Y
[s] Observation start time (MET)	350885481.184000	350884173.70734	CCD S5 on	N	N
Observation start date	2009-02-13T04:10:15	2009-02-13T03:49:33	Number of optional ACIS chips dropped	0	0
[s] Observation end time (MET)	350894281.184000	350895257.54539	On-chip summing requested	N	N
Observation end date	2009-02-13T06:36:55	2009-02-13T06:54:17	Subarray requested	NONE	NONE
Read mode	TIMED	TIMED	Alternating exposures requested	N	N
			[s] Primary exposure time	0.000000	3.2

2.3 Aspect



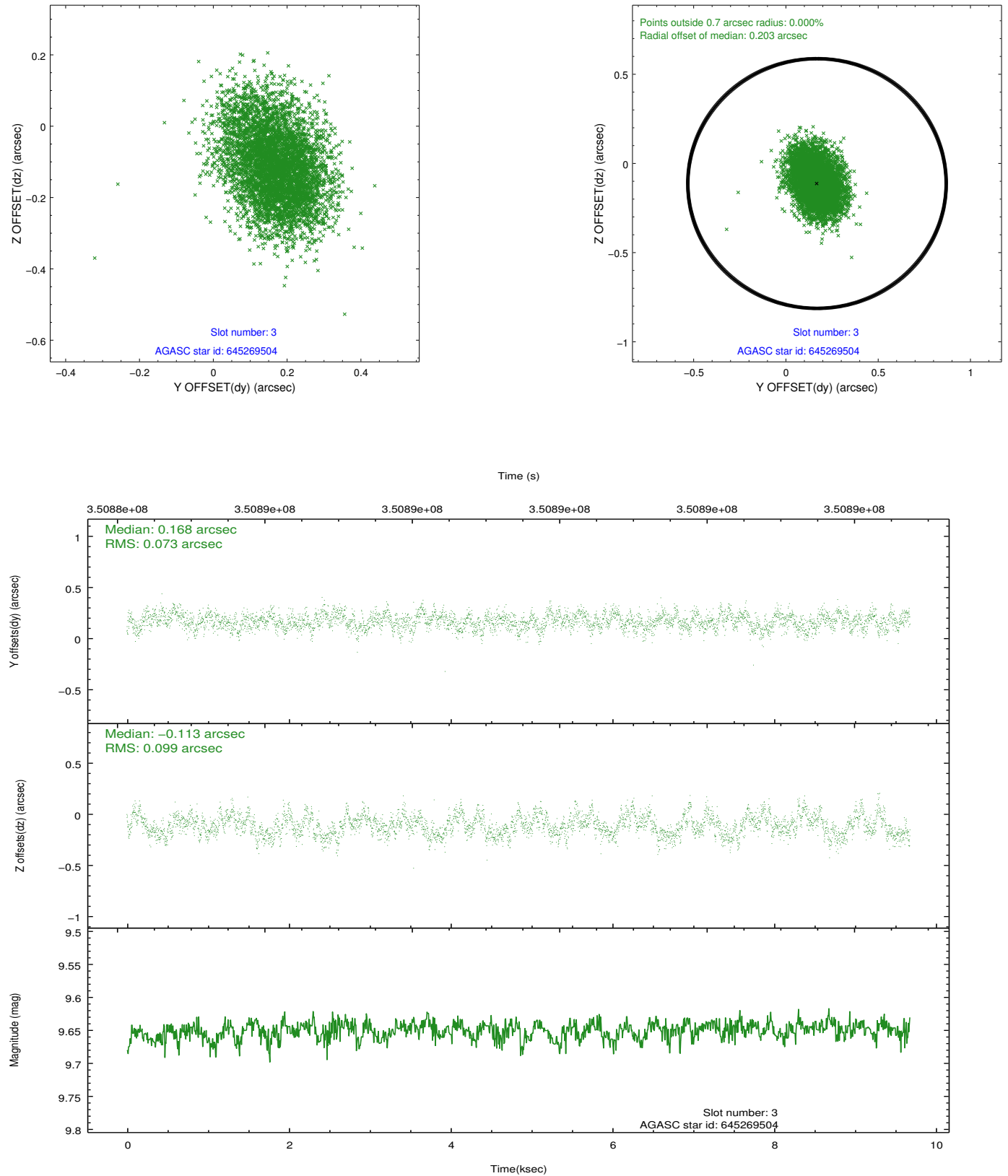


Slot Statistics

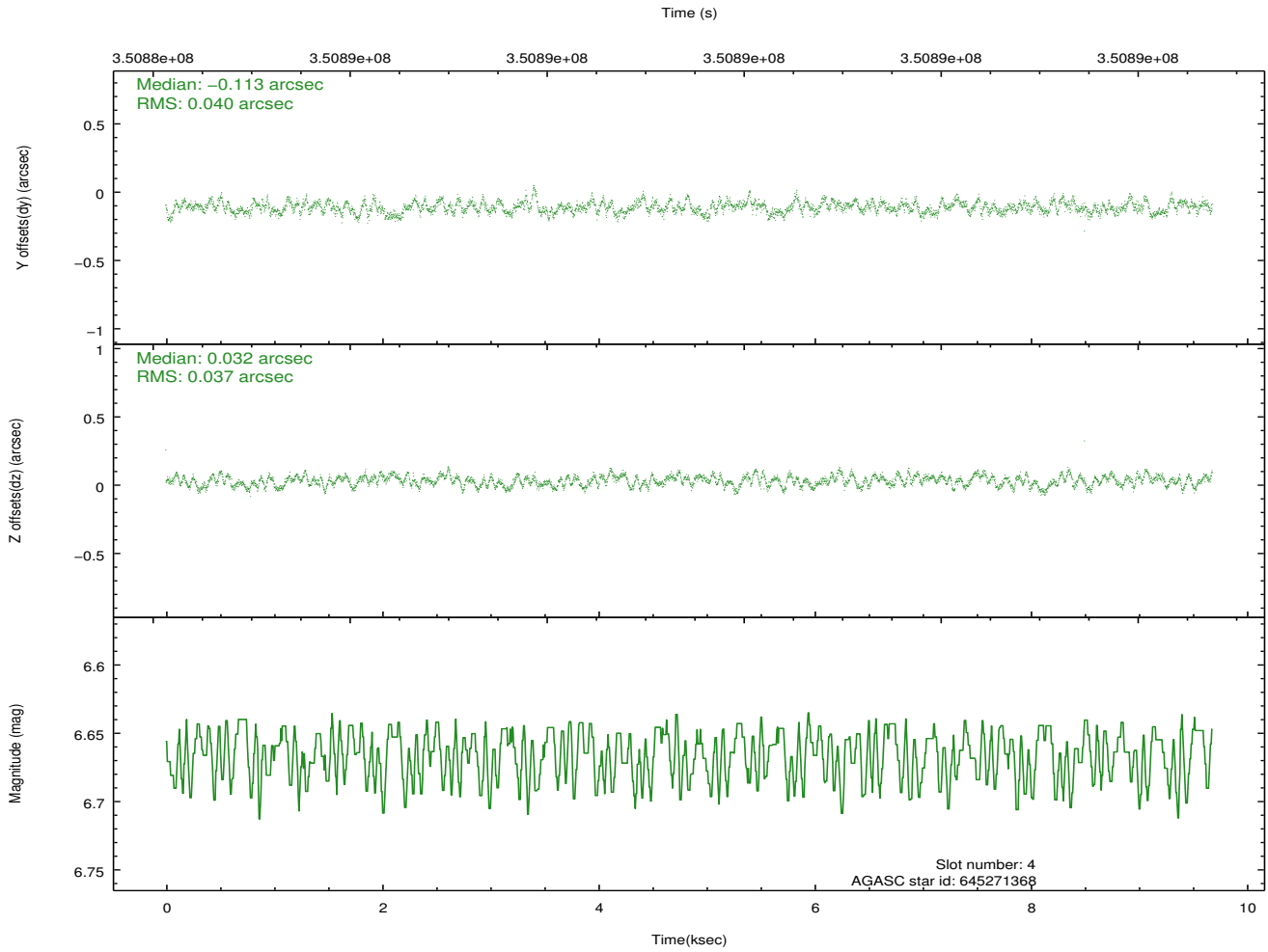
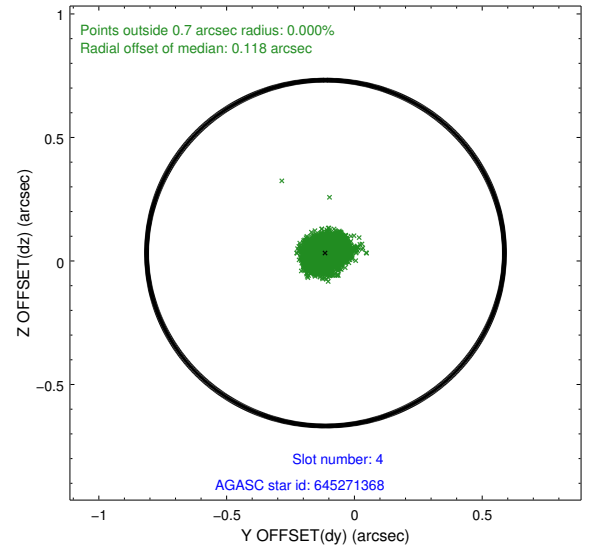
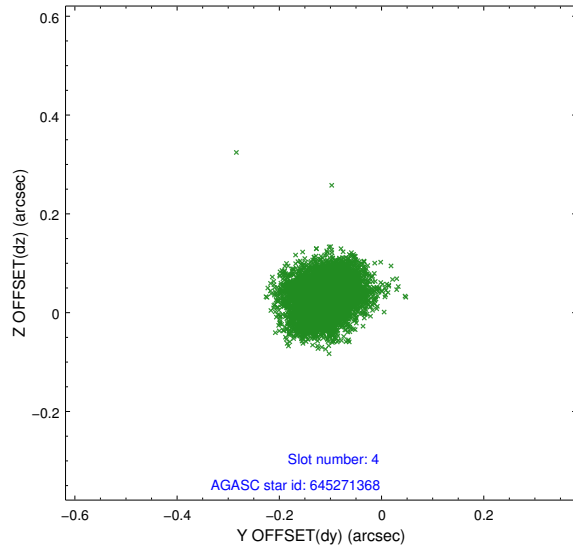
slot	status	id	mag	n_pts	med_dy	med_dz	dr1	dr2	ra	dec	mean_y	mean_z
0	FID	ACIS-S-2	6.93	2359	-0.076	-0.014	0.007	0.012	0.000000	0.000000	-767.64	-1736.03
1	FID	ACIS-S-4	7.01	2359	0.170	0.041	0.006	0.011	0.000000	0.000000	2145.61	171.95
2	FID	ACIS-S-5	7.04	2359	-0.126	-0.017	0.007	0.012	0.000000	0.000000	-1819.84	166.17
3	GUIDE	645269504	9.65	4719	0.168	-0.113	0.131	0.212	172.248737	-1.852553	-1627.86	-1456.81
4	GUIDE	645271368	6.67	4720	-0.113	0.032	0.059	0.090	172.351077	-0.848896	1769.38	-174.00
5	GUIDE	645271440	8.40	4717	-0.171	-0.011	0.092	0.144	171.497492	-1.078354	-340.39	2206.62
6	GUIDE	645275280	7.57	4719	0.038	-0.285	0.073	0.120	172.014761	-0.897854	1071.76	830.74
7	GUIDE	645268592	9.75	4714	0.083	0.380	0.149	0.250	172.459455	-2.042920	-1902.87	-2440.46

2.4 Star Slots

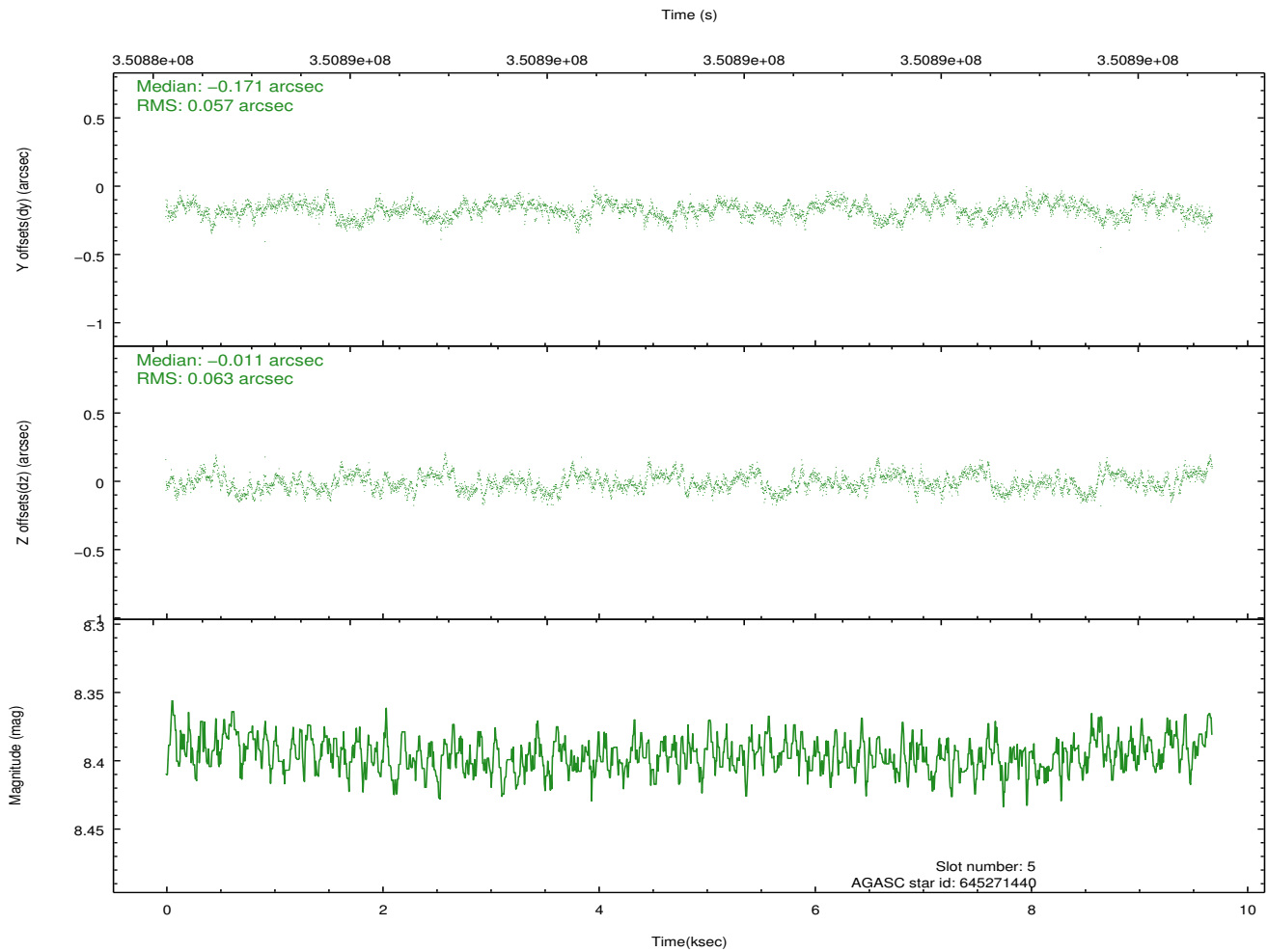
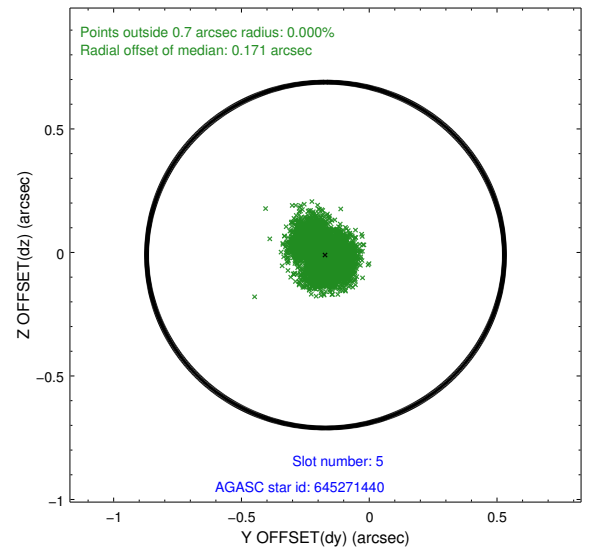
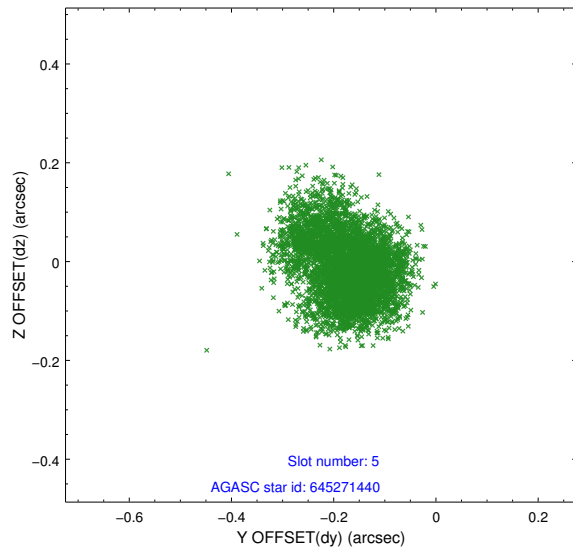
2.4.1 Slot 3



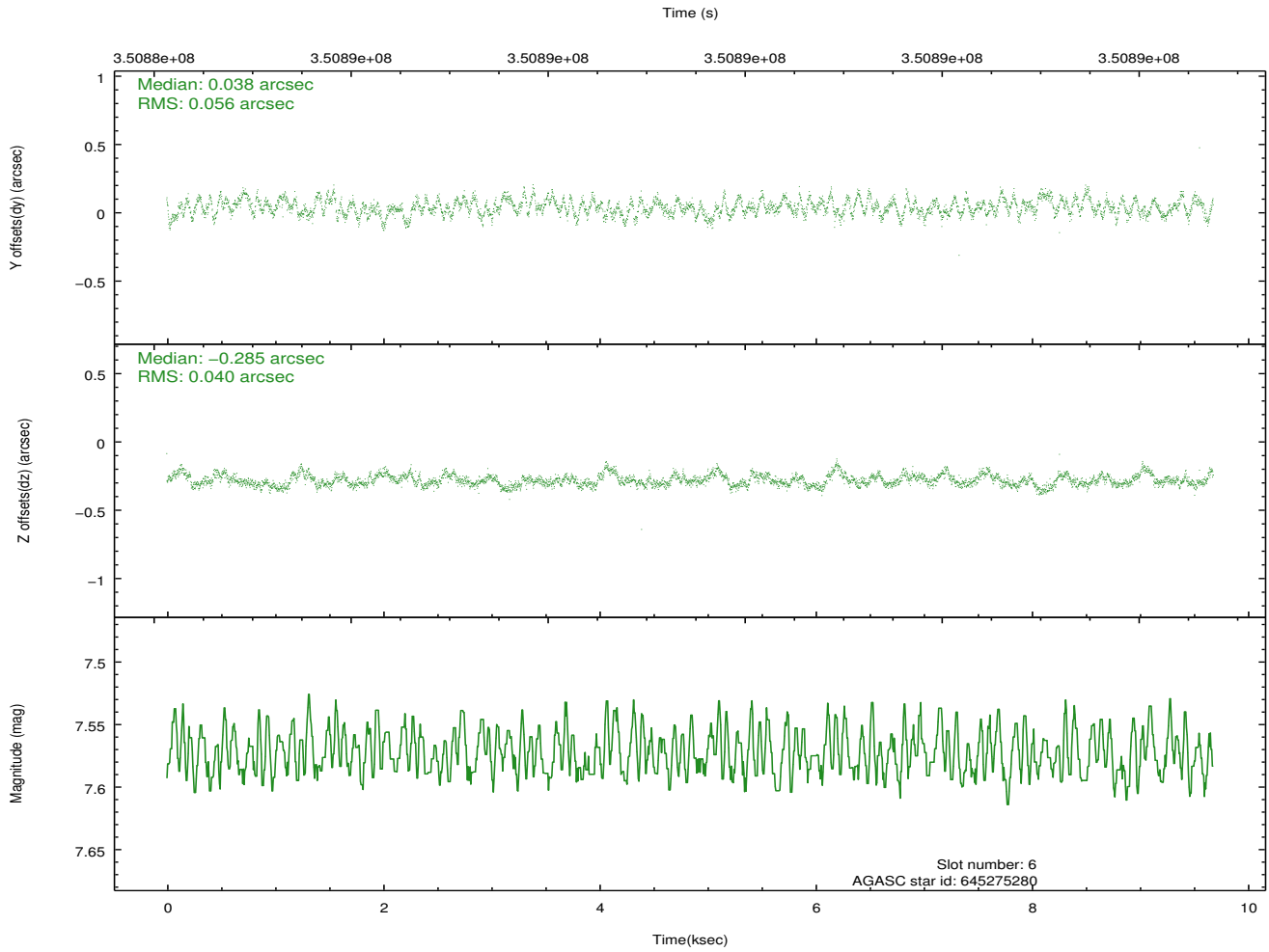
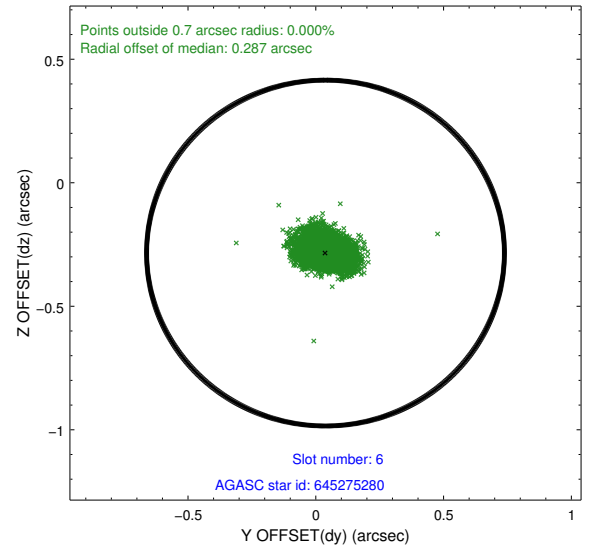
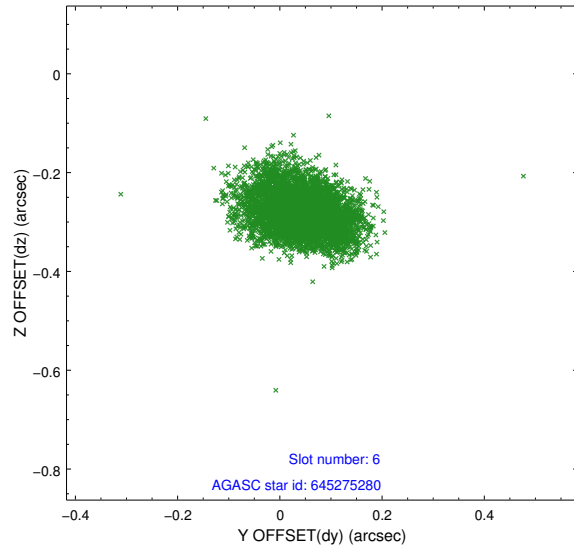
2.4.2 Slot 4



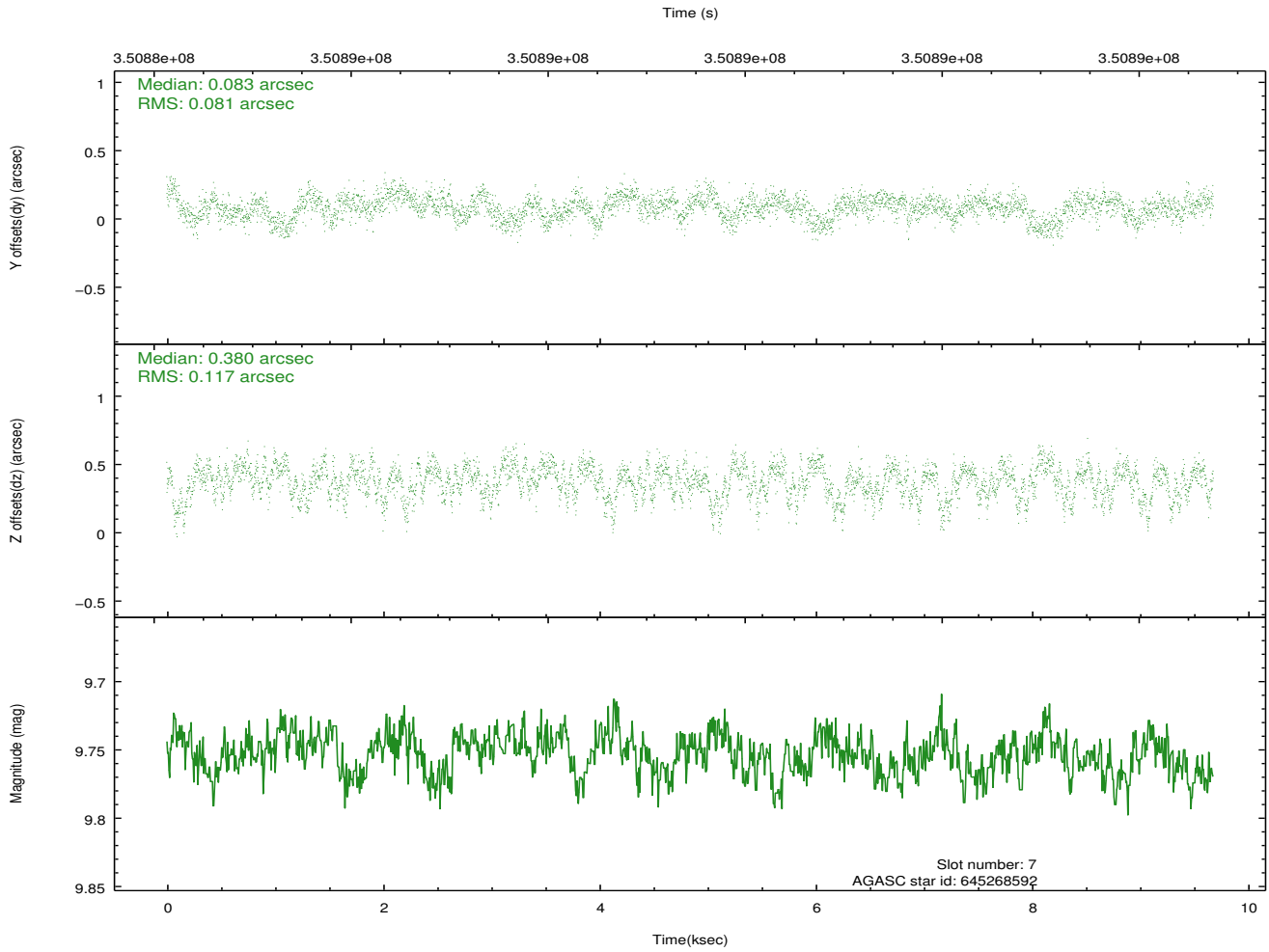
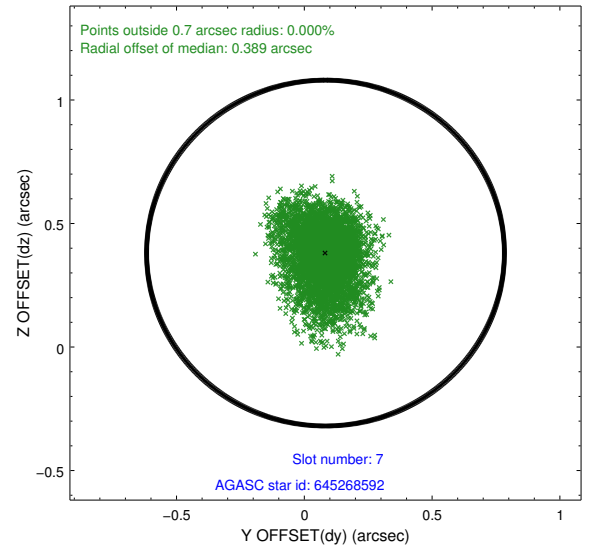
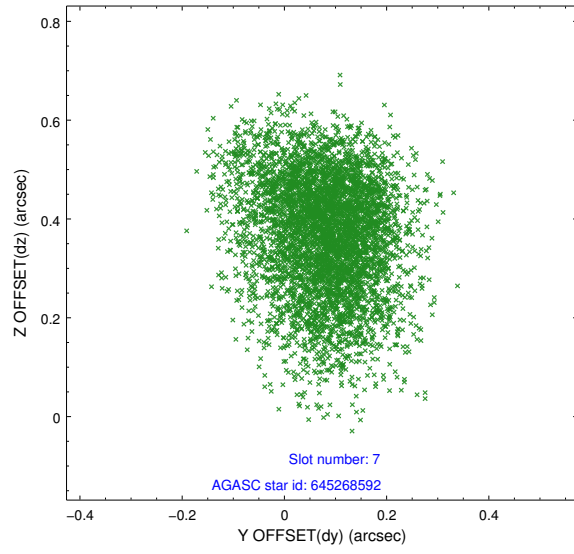
2.4.3 Slot 5



2.4.4 Slot 6

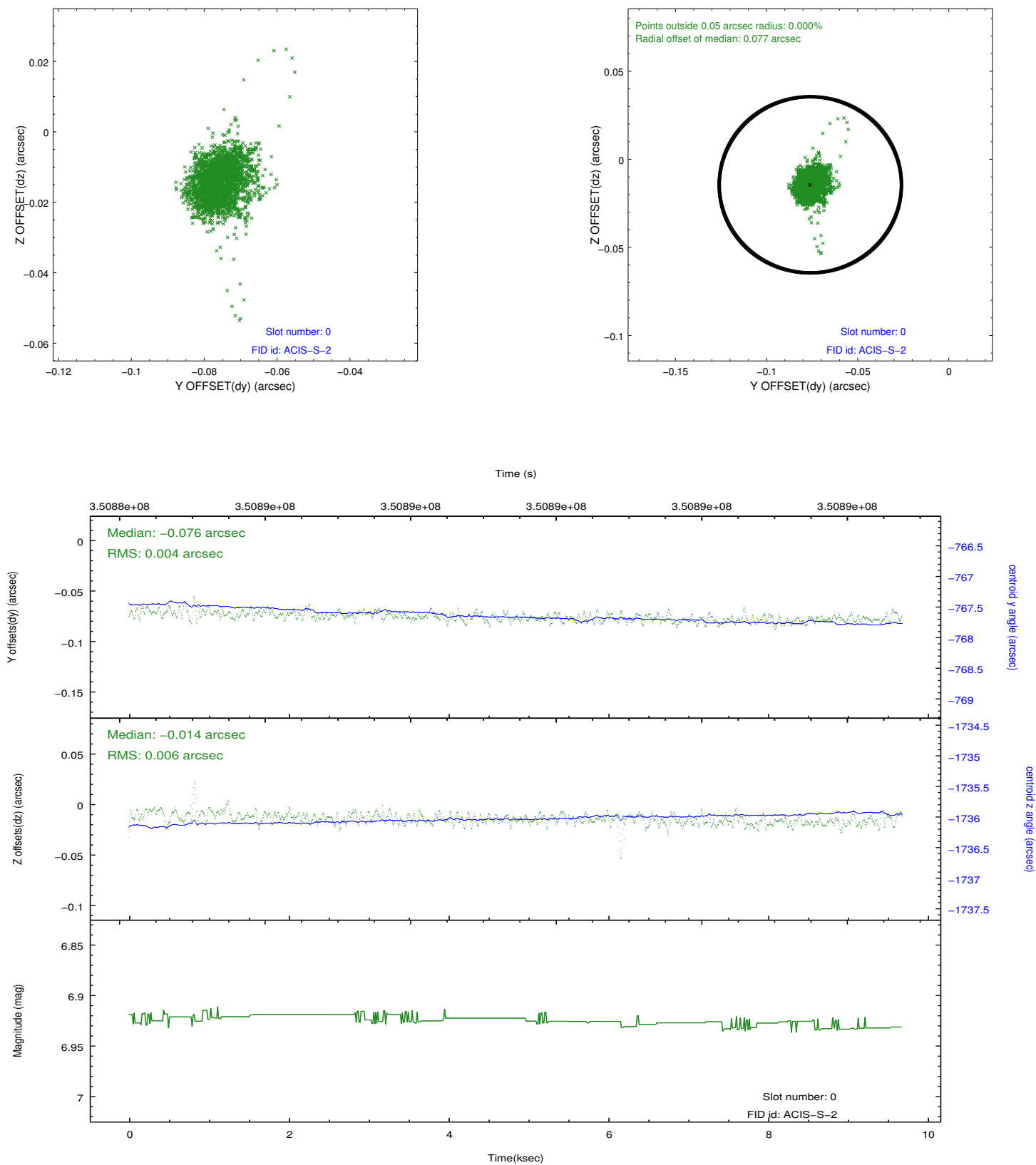


2.4.5 Slot 7

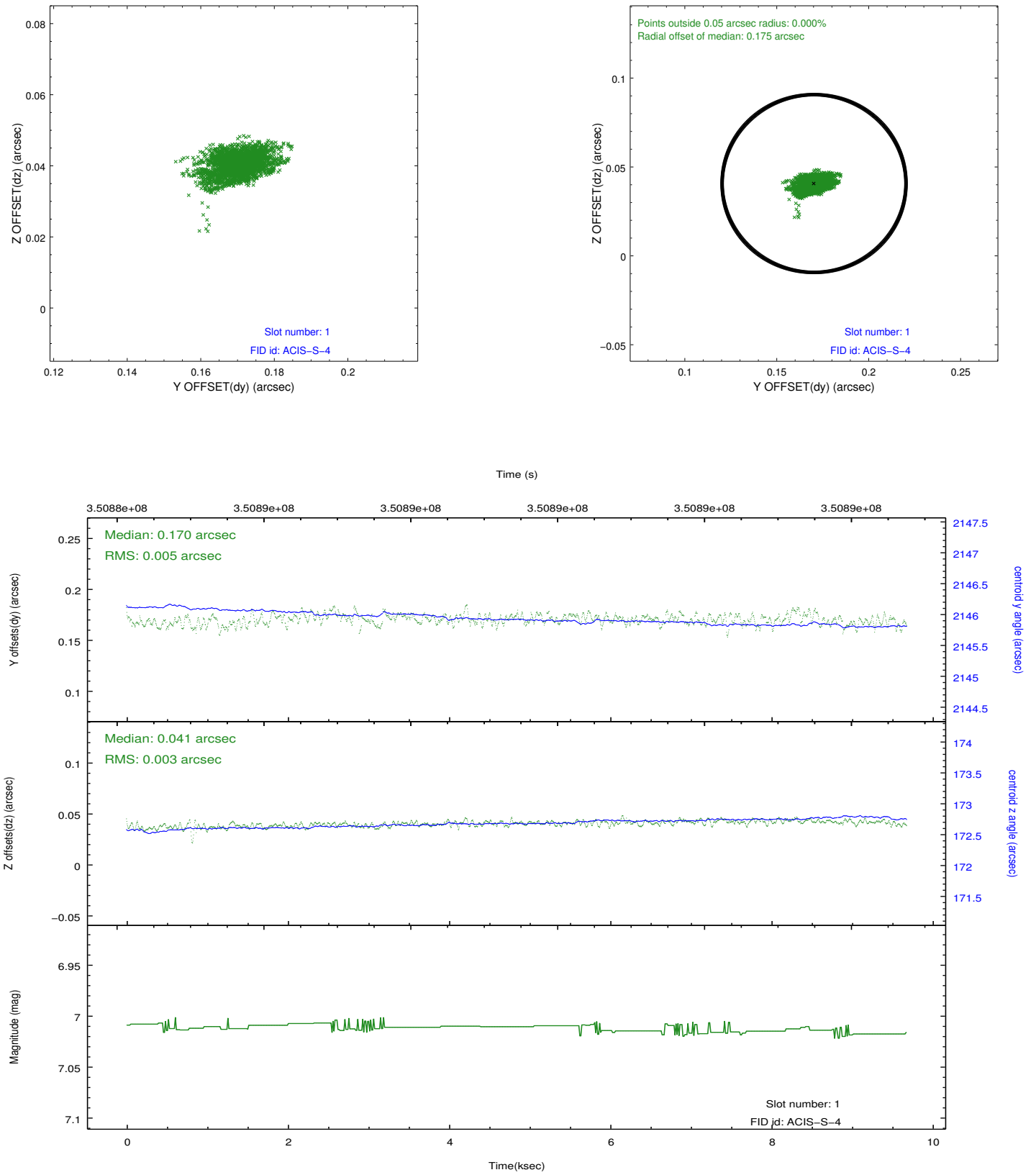


2.5 FID Slots

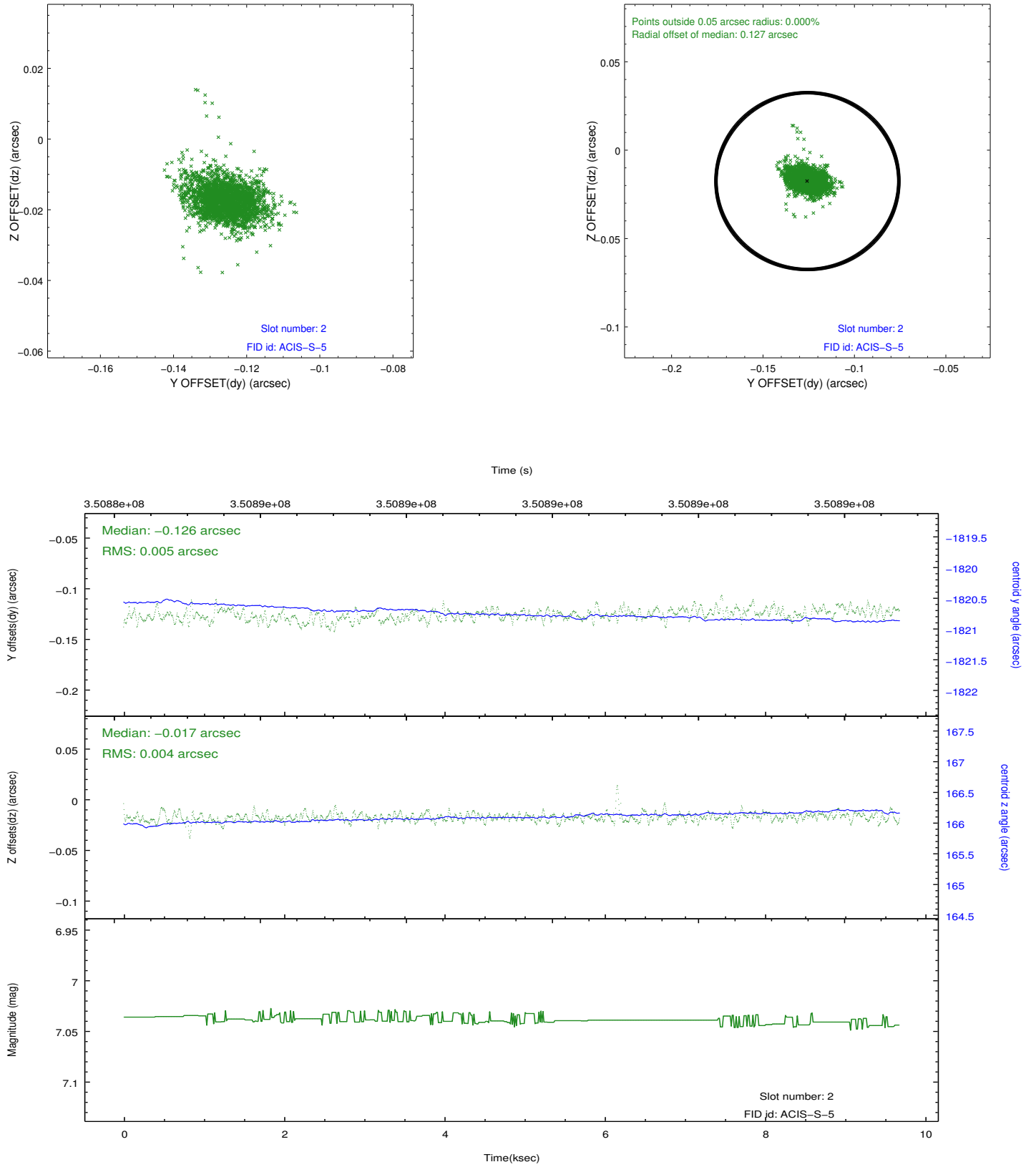
2.5.1 Slot 0



2.5.2 Slot 1



2.5.3 Slot 2



A Summary

A.1 Status

V&V Scientist	Joy Nichols
V&V Date (YYYY-MM-DD)	2012.06.05
V&V Edition	1
V&V Disposition and Status	OK
V&V Charge Time	8.73903591

A.2 Comments