

V&V Reference Report

L2 ASCDS Version : 8.4.4

Observation 10313 - L2 Version 2
Chandra X-Ray Center

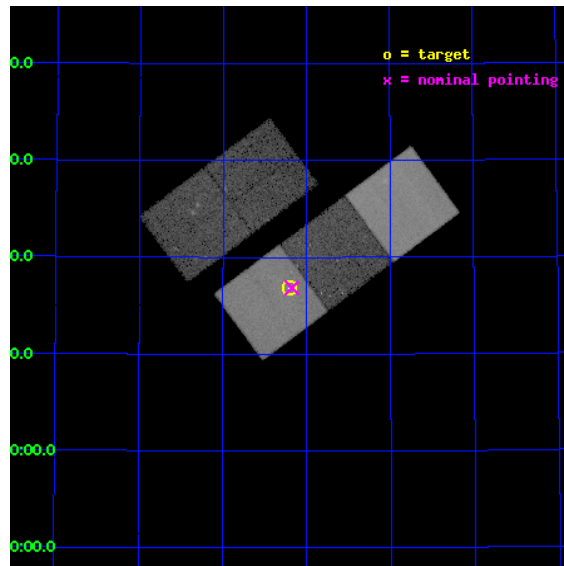
L2 Processing Date : May 29 2012

Contents

1	Front	2
2	OBI	3
2.1	OBI	3
2.1.1	Images	3
2.1.2	Bias	3
2.1.3	Parameters	4
2.1.4	Events	4
2.2	Compared Parameters	5
2.3	Aspect	6
2.4	Star Slots	9
2.4.1	Slot 3	9
2.4.2	Slot 4	10
2.4.3	Slot 5	11
2.4.4	Slot 6	12
2.4.5	Slot 7	13
2.5	FID Slots	14
2.5.1	Slot 0	14
2.5.2	Slot 1	15
2.5.3	Slot 2	16
A	Summary	17
A.1	Status	17
A.2	Comments	17

1 Front

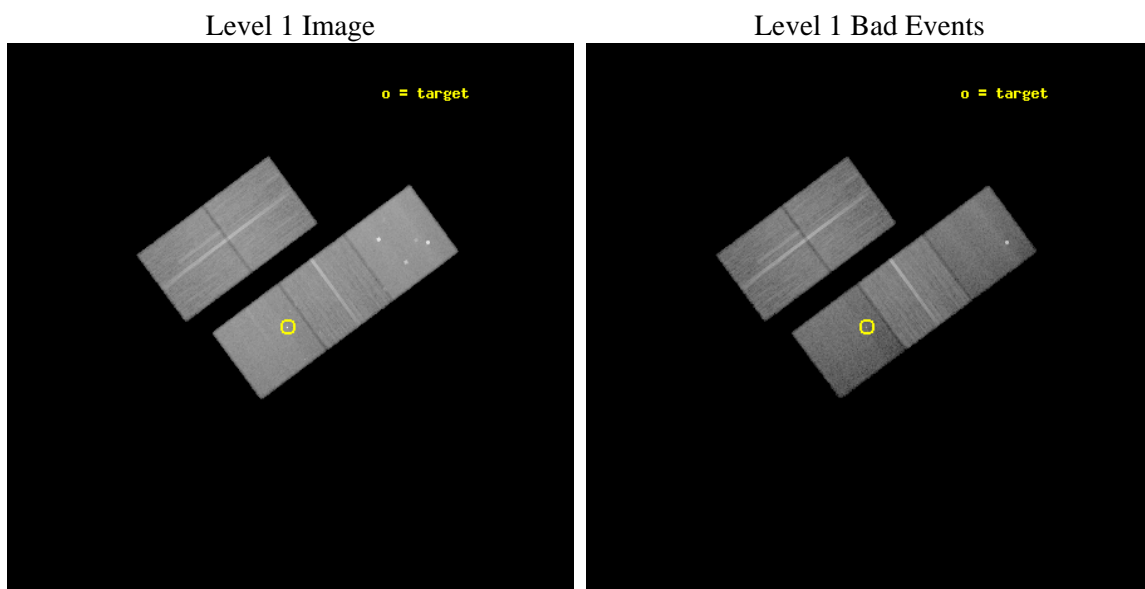
seq_num	701856	Sequence number
obs_id	10313	Observation id
title	Two to Tango? Binary Quasars, their Environments, and the Merger Hypothesis	Proposal title
observer	Dr. Paul Green	Principal investigator
object	SDSSJ0813+5416	Source name
dtcycle	0	
cycle	P	events from which exps? Prim/Second/Both
ra_targ	123.3025	Observer's specified target RA [deg]
dec_targ	54.2805	Observer's specified target Dec [deg]
ra_nom	123.2942147594	Nominal RA [deg]
dec_nom	54.280921903301	Nominal Dec [deg]
roll_nom	143.43126006422	Nominal Roll [deg]
revision	2	Processing version of data
ontime	31030.959218442	Sum of GTIs [s]
livetime	30625.516891594	Livetime [s]
ontime2	31021.536207497	Sum of GTIs [s]
ontime3	31027.81823796	Sum of GTIs [s]
ontime5	31024.677227616	Sum of GTIs [s]
ontime6	31015.254246712	Sum of GTIs [s]
ontime7	31030.959218442	Sum of GTIs [s]
l2events	330402	Number of level 2 events



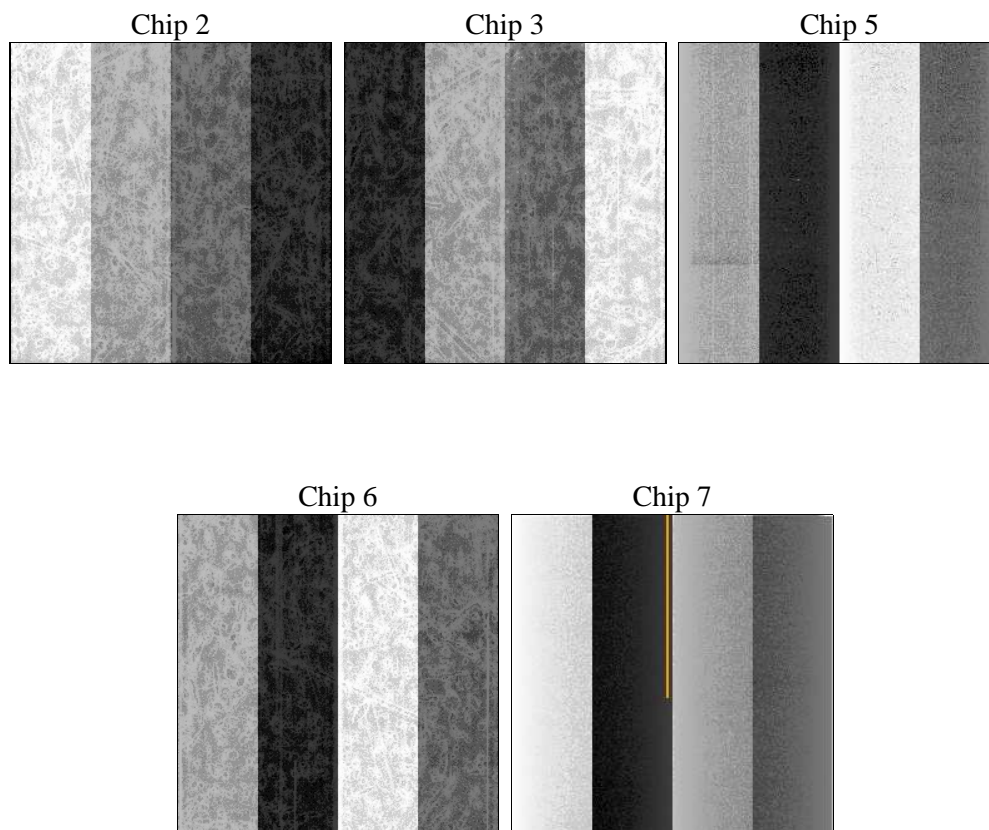
2 OBI

2.1 OBI

2.1.1 Images



2.1.2 Bias



2.1.3 Parameters

obi_num	0	Obi number	sched_exp_time	31000.000000	[s] Scheduled observation exposure time
ascdsver	8.4.4	Processing system revision	ontime	31030.959218442	Sum of GTIs [s]
caldbver	4.4.9	 	ontime2	31021.536207497	Sum of GTIs [s]
date	2012-05-29T17:32:08	Date and time of file creation	ontime3	31027.81823796	Sum of GTIs [s]
revision	2	Processing version of data	ontime5	31024.677227616	Sum of GTIs [s]
			ontime6	31015.254246712	Sum of GTIs [s]
			ontime7	31030.959218442	Sum of GTIs [s]
			l1events	1295236	Number of level 1 events

2.1.4 Events

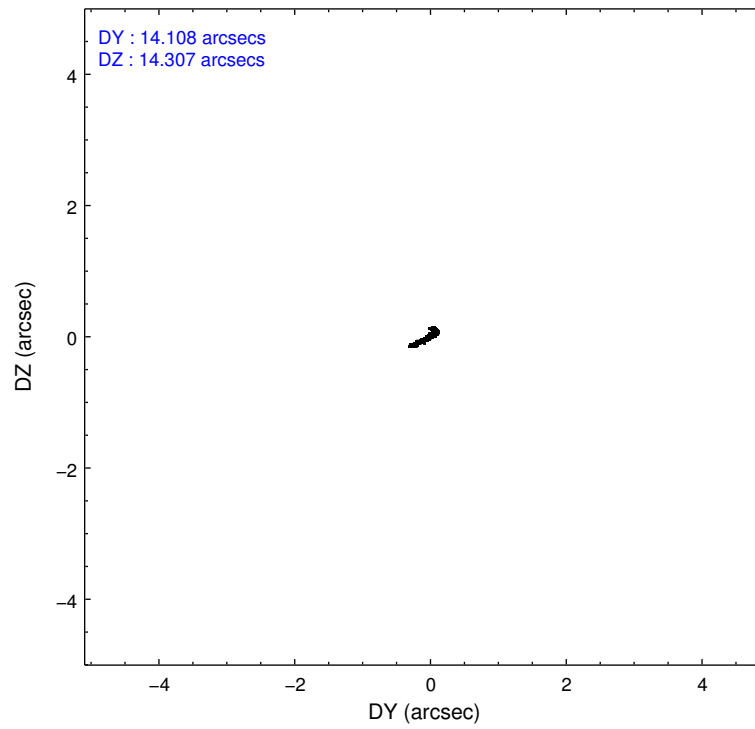
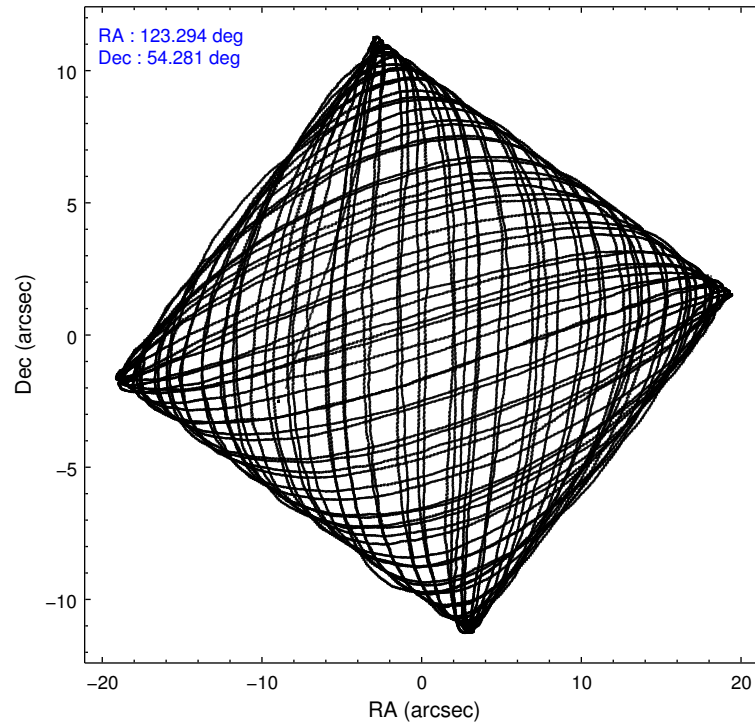
	ccd 2	ccd 3	ccd 5	ccd 6	ccd 7
level 1 events	248508	236035	323062	246836	240795
rejected events	225295	213382	150209	220505	120810
rejected %	90%	90%	46%	89%	50%

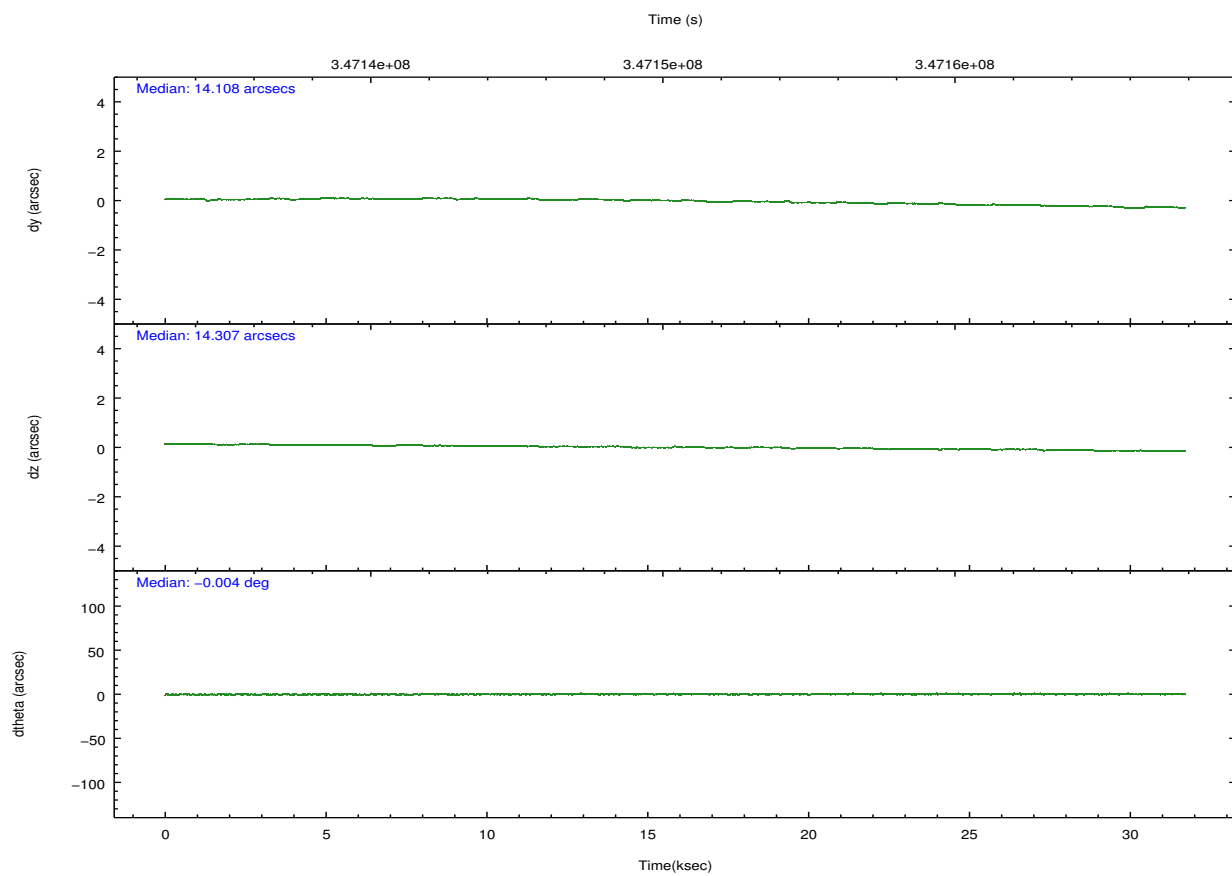
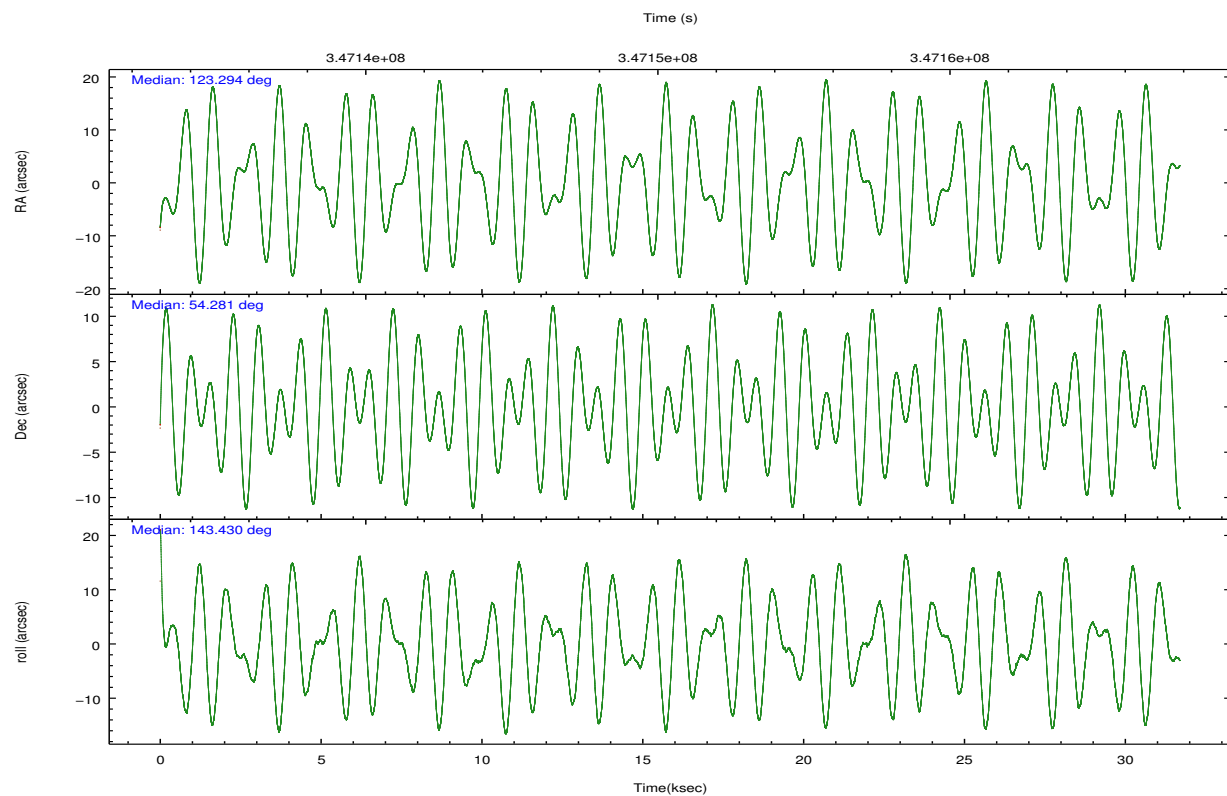
	ccd 2	ccd 3	ccd 5	ccd 6	ccd 7
grade 0 events	8578	8434	23344	10133	13012
	3%	3%	7%	4%	5%
grade 1 events	121	126	697	137	409
	0%	0%	0%	0%	0%
grade 2 events	5647	4971	53142	5677	25579
	2%	2%	16%	2%	10%
grade 3 events	2478	2577	6982	2751	11421
	0%	1%	2%	1%	4%
grade 4 events	2557	2431	6537	2709	11141
	1%	1%	2%	1%	4%
grade 5 events	6786	8137	25180	8449	25525
	2%	3%	7%	3%	10%
grade 6 events	3953	4242	82875	5063	58843
	1%	1%	25%	2%	24%
grade 7 events	218388	205117	124305	211917	94865
	87%	86%	38%	85%	39%

2.2 Compared Parameters

Parameter	Planned	Actual	Parameter	Planned	Actual
Instrument	ACIS	ACIS	Obspar format version number	7	7
Detector	ACIS-23567	ACIS-23567	Obspar file type	PREDICTED	ACTUAL
Grating	NONE	NONE	Obspar update status	NONE	UPDATED
Data mode	VFAINT	VFAINT	CCD I0 on	N	N
Observation mode	POINTING	POINTING	CCD I1 on	N	N
[deg] Pointing RA	123.340817	123.294214759401	CCD I2 on	O2	Y
[deg] Pointing Dec	54.278152	54.28092190330118	CCD I3 on	O3	Y
[deg] Pointing Roll	143.236791	143.4312600642229	CCD S0 on	N	N
[mm] SIM focus pos	-0.684267	-0.6828225247311905	CCD S1 on	O1	Y
[mm] SIM defocus	0	0.001444936568705701	CCD S2 on	O4	Y
[mm] SIM translation stage pos	-190.132523	-190.1425803651734	CCD S3 on	Y	Y
[mm] SIM translation stage offset	0	0.01005778216563158	CCD S4 on	N	N
[s] Observation start time (MET)	347135256.184000	347134070.59664	CCD S5 on	N	N
Observation start date	2008-12-31T18:26:31	2008-12-31T18:07:50	Number of optional ACIS chips dropped	0	0
[s] Observation end time (MET)	347166257.184000	347167279.57328	On-chip summing requested	N	N
Observation end date	2009-01-01T03:03:11	2009-01-01T03:21:19	Subarray requested	NONE	NONE
Read mode	TIMED	TIMED	Alternating exposures requested	N	N
			[s] Primary exposure time	0.000000	3.1

2.3 Aspect



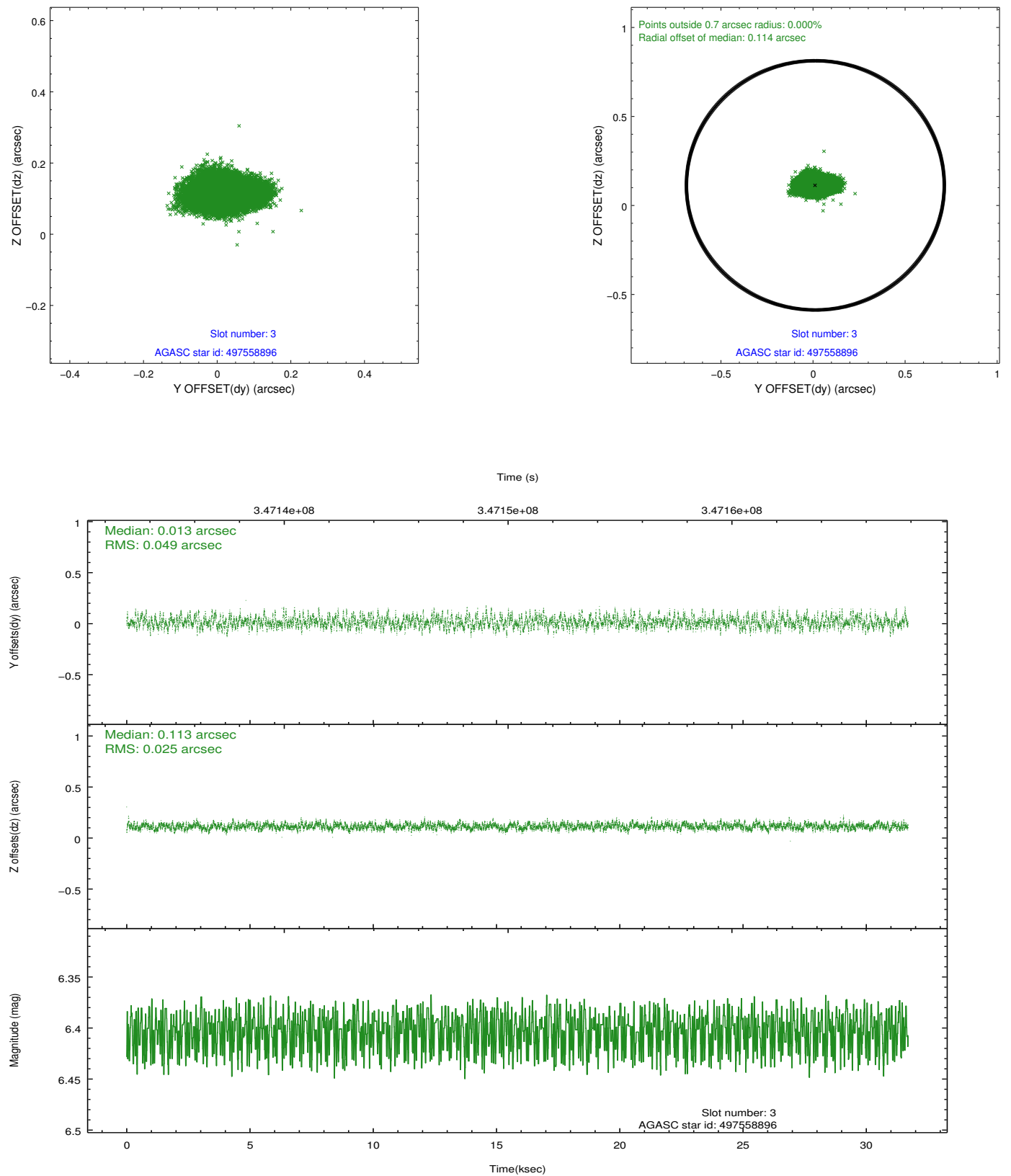


Slot Statistics

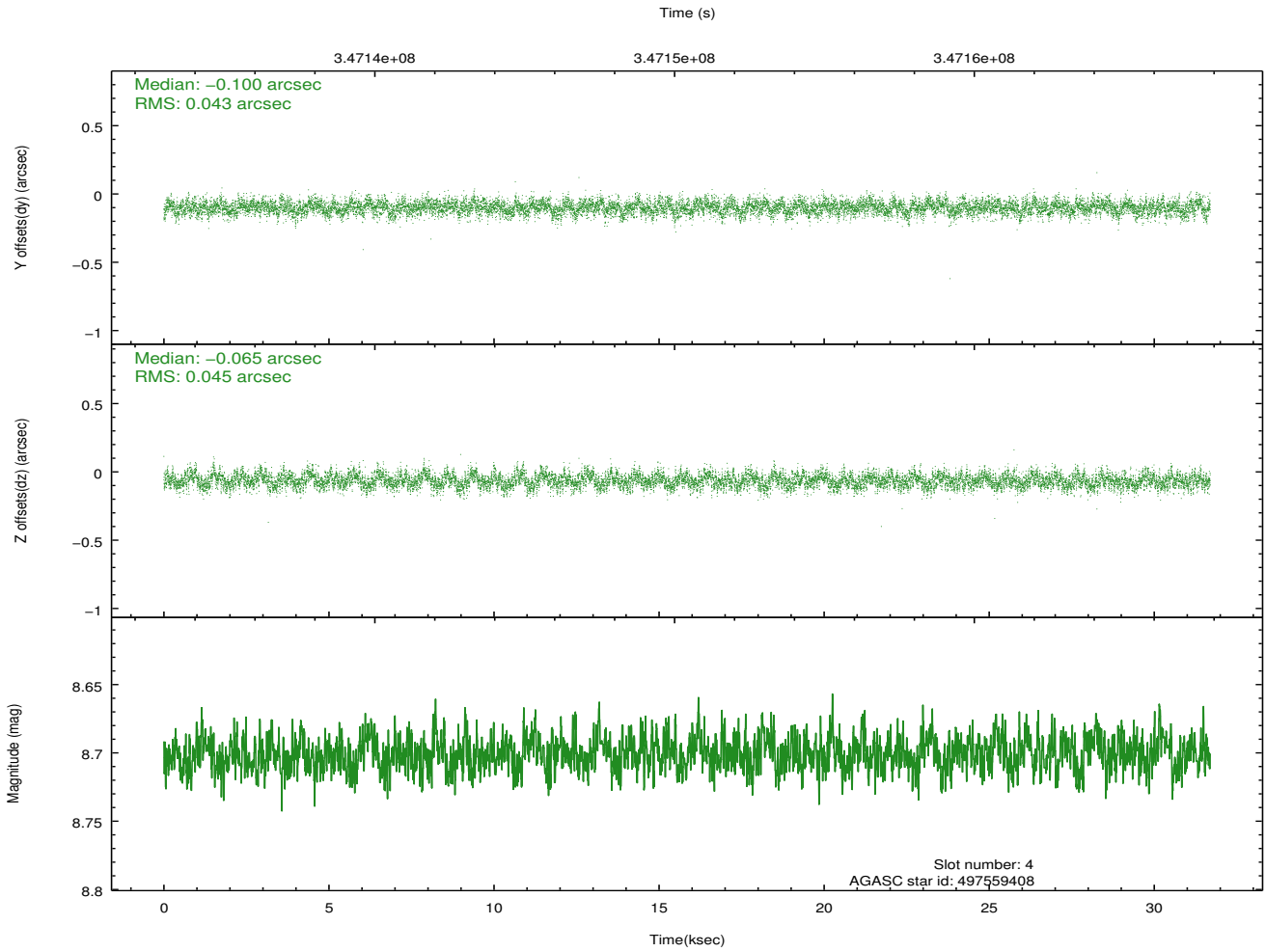
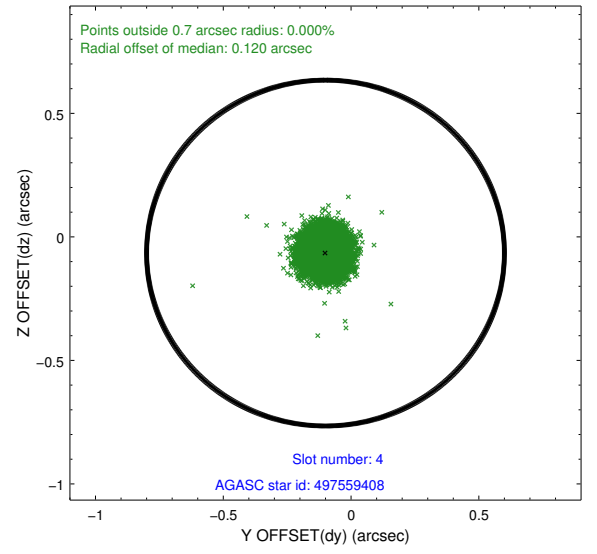
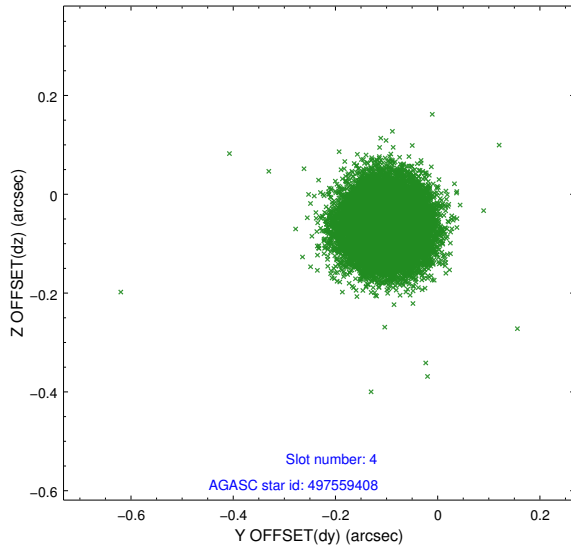
slot	status	id	mag	n_pts	med_dy	med_dz	dr1	dr2	ra	dec	mean_y	mean_z
0	FID	ACIS-S-2	6.94	7728	-0.064	-0.040	0.009	0.014	0.000000	0.000000	-767.06	-1735.66
1	FID	ACIS-S-4	7.02	7727	0.195	0.041	0.009	0.016	0.000000	0.000000	2146.43	172.85
2	FID	ACIS-S-5	7.05	7727	-0.162	0.007	0.007	0.011	0.000000	0.000000	-1819.94	166.54
3	GUIDE	497558896	6.40	15456	0.013	0.113	0.058	0.101	122.825339	54.540238	1428.86	-113.97
4	GUIDE	497559408	8.70	15450	-0.100	-0.065	0.067	0.106	122.373225	54.272968	1626.81	1221.44
5	GUIDE	497560432	8.24	15449	-0.022	-0.124	0.068	0.109	122.755849	54.234231	894.43	859.86
6	GUIDE	497565168	8.80	15440	0.115	0.049	0.081	0.128	124.148363	54.072128	-1804.40	-433.88
7	GUIDE	497687440	6.92	15452	-0.007	0.027	0.059	0.093	124.620279	54.563843	-1509.35	-2441.48

2.4 Star Slots

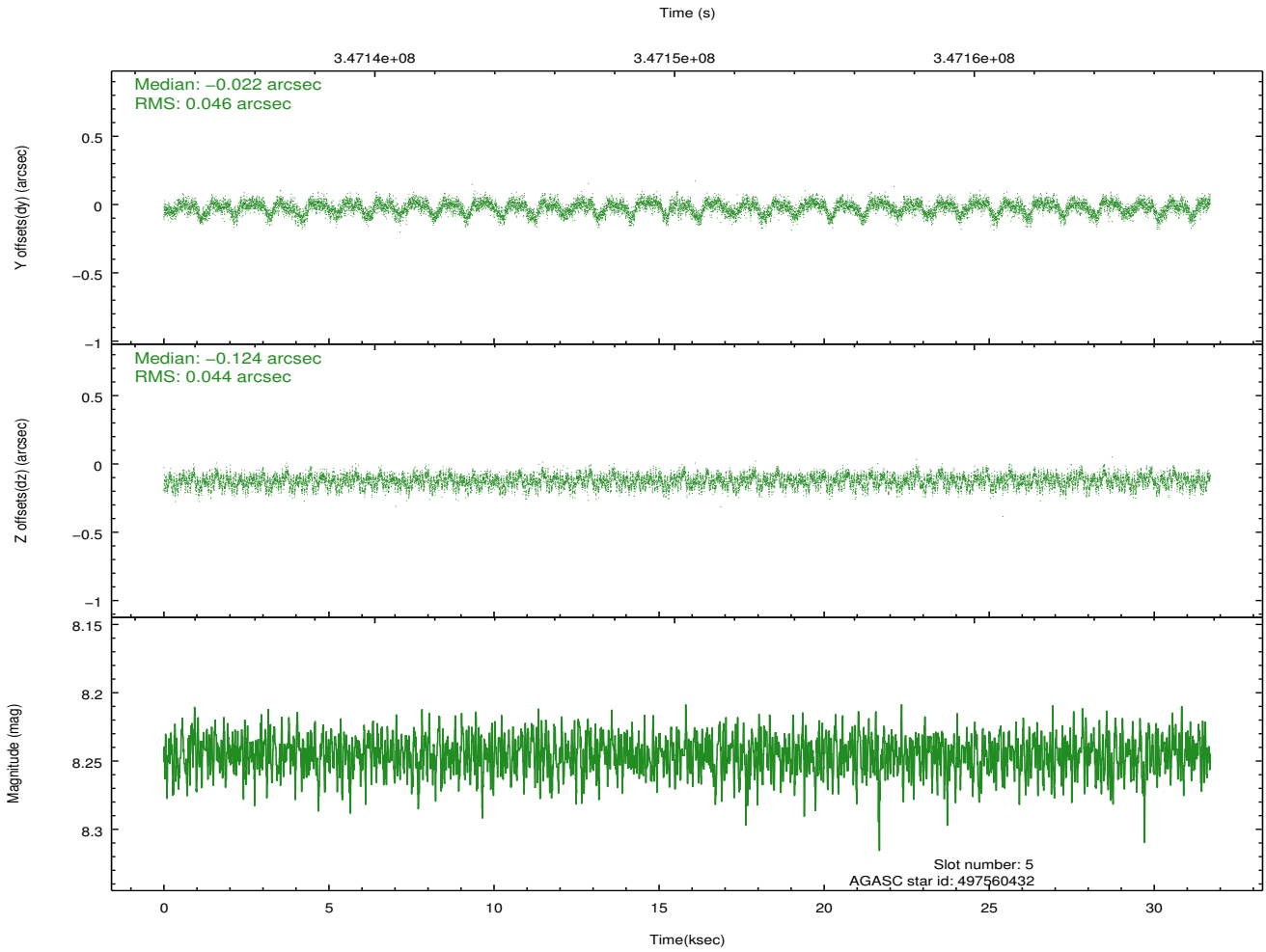
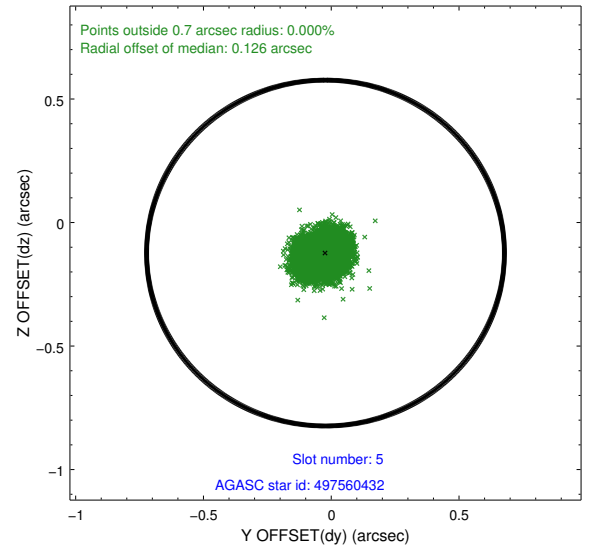
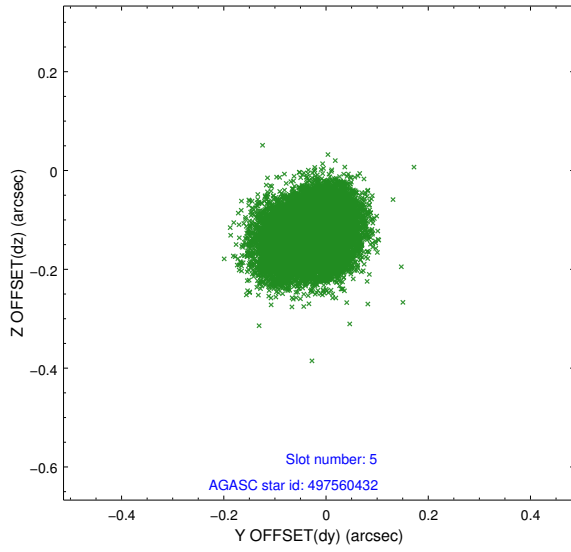
2.4.1 Slot 3



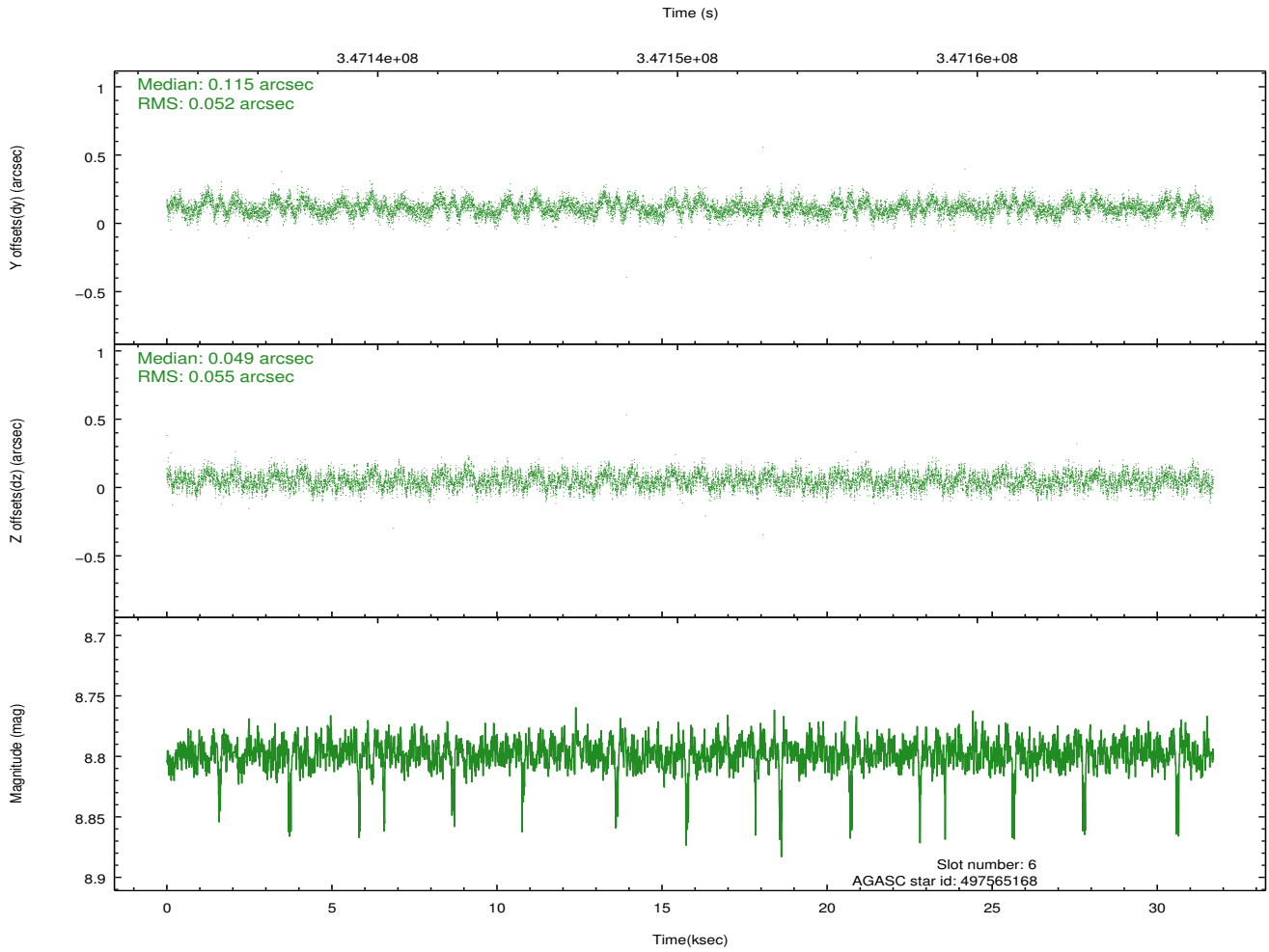
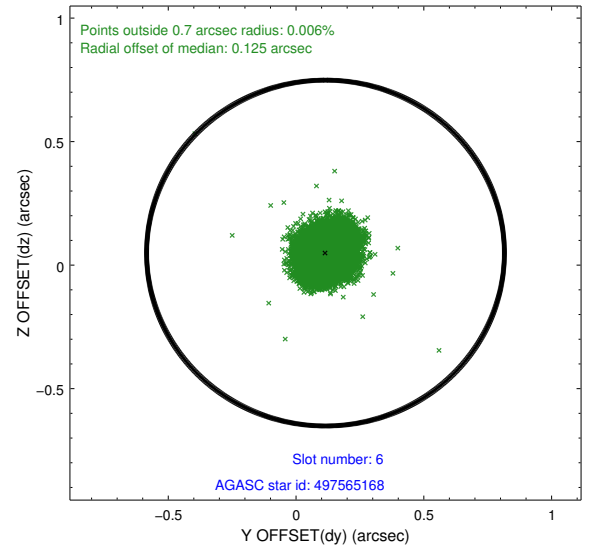
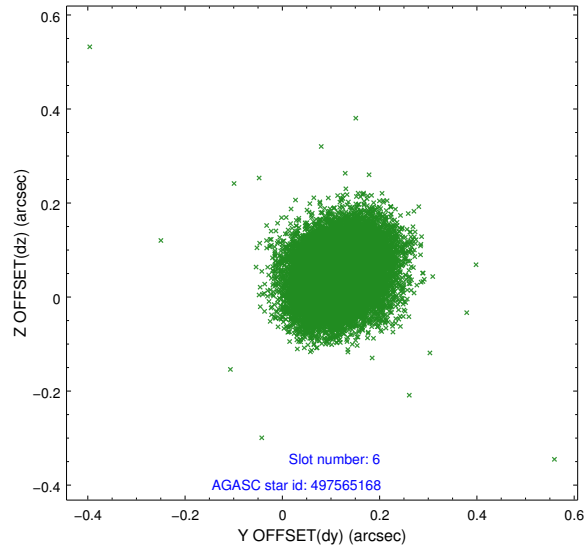
2.4.2 Slot 4



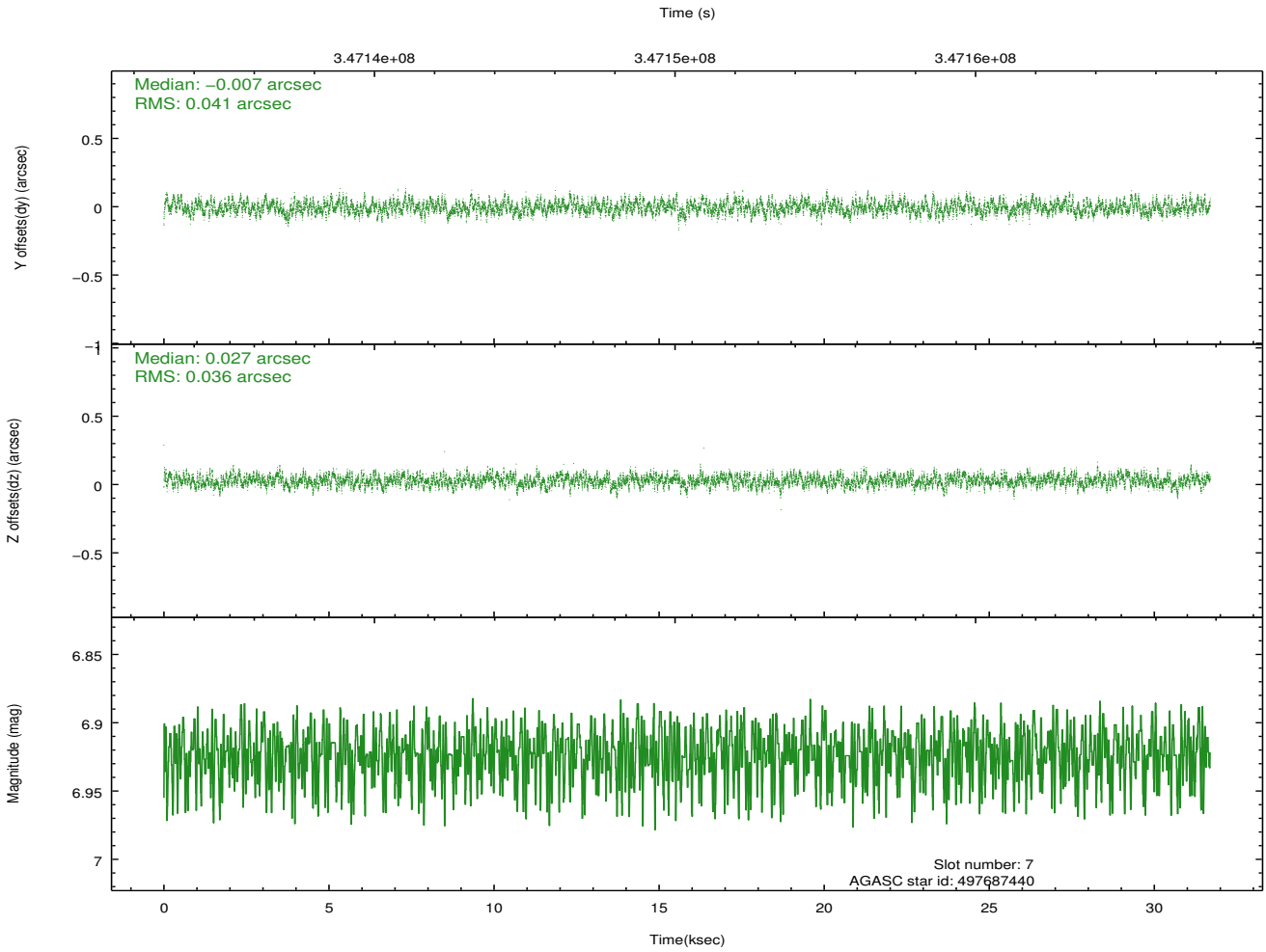
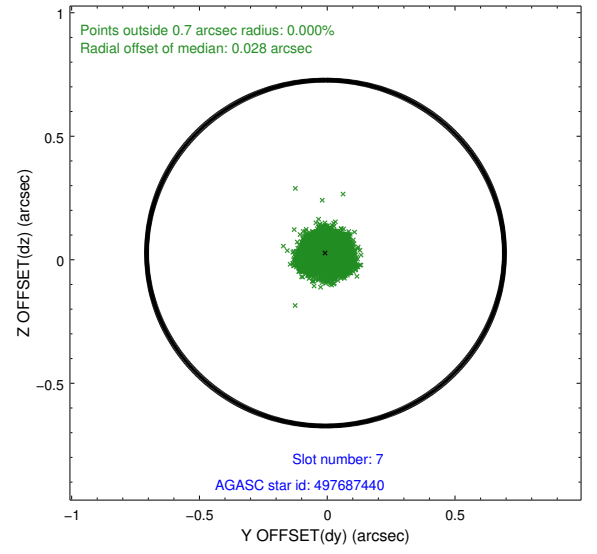
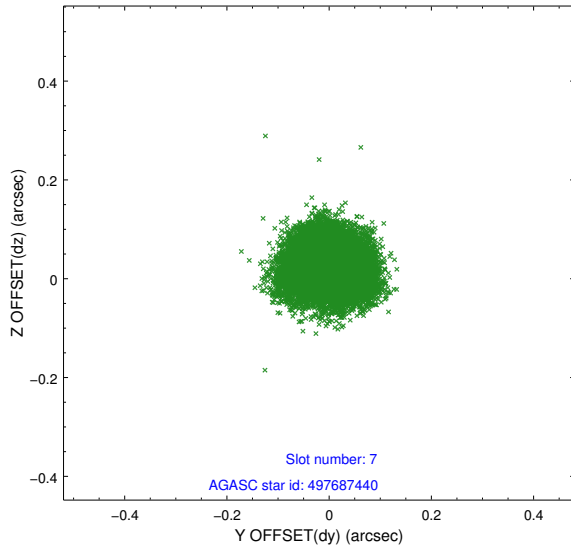
2.4.3 Slot 5



2.4.4 Slot 6

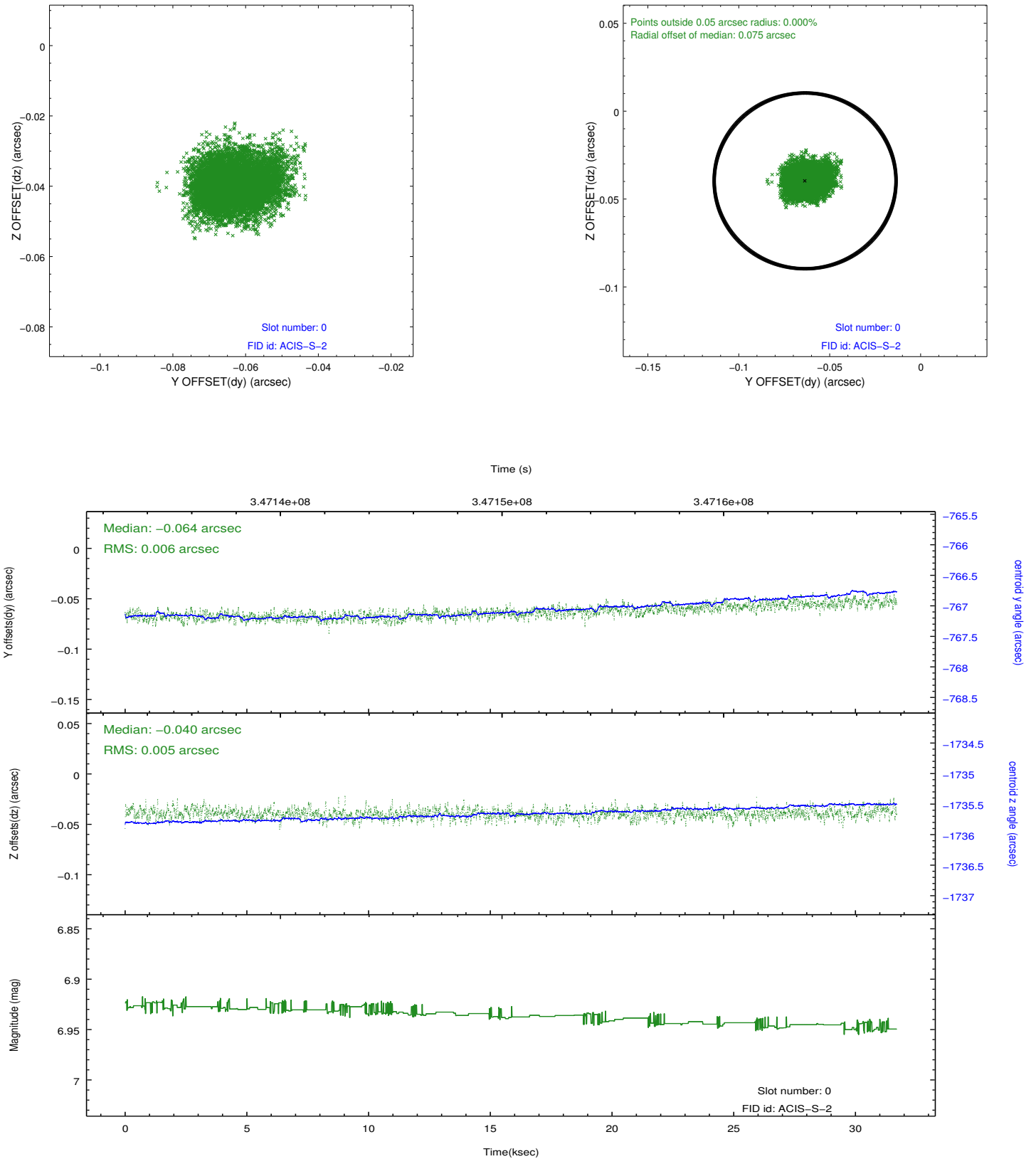


2.4.5 Slot 7

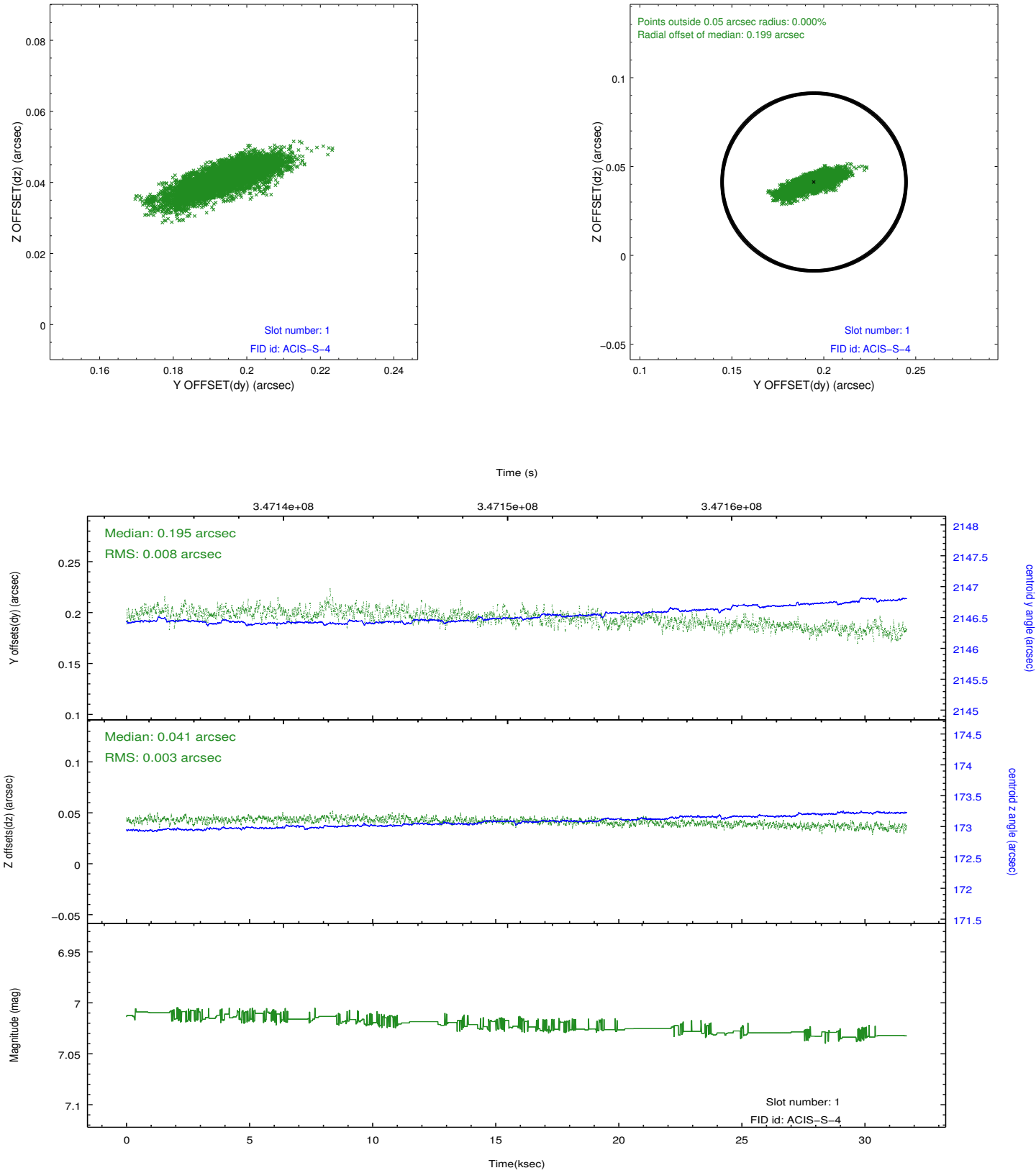


2.5 FID Slots

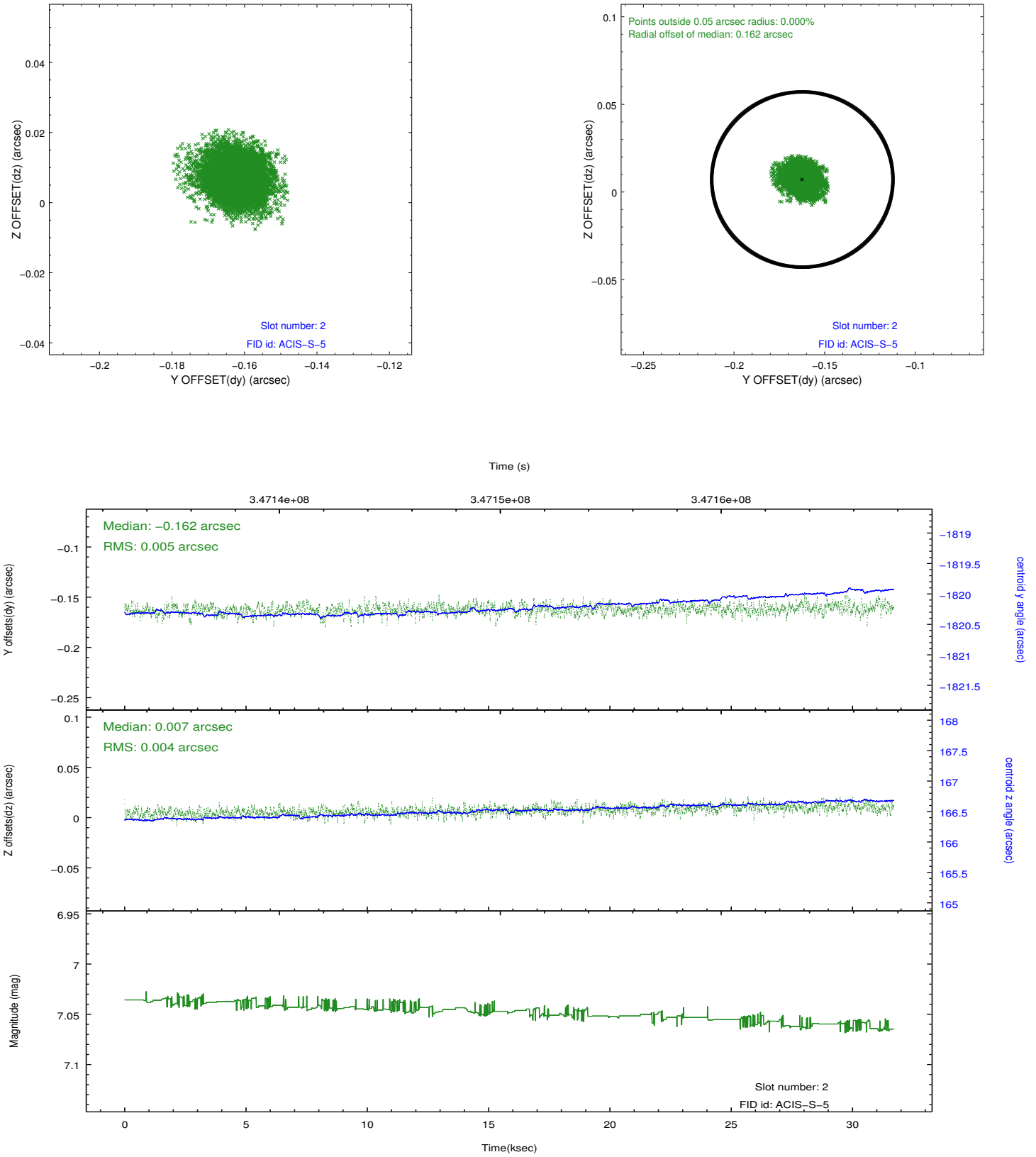
2.5.1 Slot 0



2.5.2 Slot 1



2.5.3 Slot 2



A Summary

A.1 Status

V&V Scientist	Beth Sundheim
V&V Date (YYYY-MM-DD)	2012.06.04
V&V Edition	1
V&V Disposition and Status	OK
V&V Charge Time	31.0309592

A.2 Comments

Joint proposal with NOAO.