

V&V Reference Report

L2 ASCDS Version : 8.4.5

Observation 982 - L2 Version 4
Chandra X-Ray Center

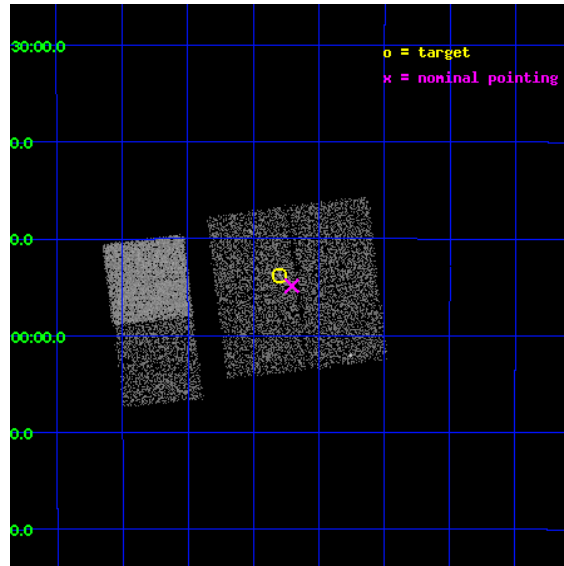
L2 Processing Date : Sep 22 2012

Contents

1	Front	2
2	OBI	3
2.1	OBI	3
2.1.1	Images	3
2.1.2	Bias	3
2.1.3	Parameters	4
2.1.4	Events	4
2.2	Compared Parameters	5
2.3	Aspect	6
2.4	Star Slots	9
2.4.1	Slot 3	9
2.4.2	Slot 4	10
2.4.3	Slot 5	11
2.4.4	Slot 6	12
2.4.5	Slot 7	13
2.5	FID Slots	14
2.5.1	Slot 0	14
2.5.2	Slot 1	15
2.5.3	Slot 2	16
A	Summary	17
A.1	Status	17
A.2	Comments	17

1 Front

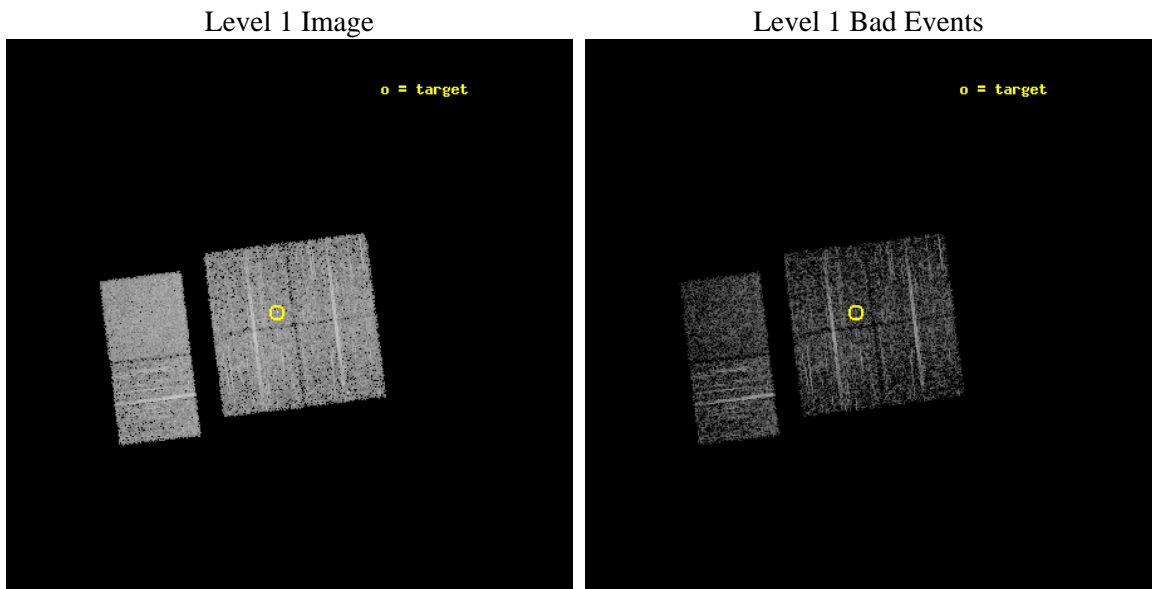
seq_num	200089	Sequence number
obs_id	982	Observation id
title	OBSERVATION OF SCO-CEN OUTLYERS	Proposal title
observer	Professor Gordon Garmire	Principal investigator
object	HD150193	Source name
dtcycle	0	
cycle	P	events from which exps? Prim/Second/Both
ra_targ	250.074583	Observer's specified target RA [deg]
dec_targ	-23.895833	Observer's specified target Dec [deg]
ra_nom	250.05150744604	Nominal RA [deg]
dec_nom	-23.914523731609	Nominal Dec [deg]
roll_nom	262.90185332716	Nominal Roll [deg]
revision	4	Processing version of data
ontime	2953.6000027359	Sum of GTIs [s]
livetime	2916.1997410568	Livetime [s]
ontime0	2953.6000027359	Sum of GTIs [s]
ontime1	2953.6000027359	Sum of GTIs [s]
ontime2	2953.6000027359	Sum of GTIs [s]
ontime3	2953.6000027359	Sum of GTIs [s]
ontime6	2953.6000027359	Sum of GTIs [s]
ontime7	2953.6000027359	Sum of GTIs [s]
l2events	23535	Number of level 2 events



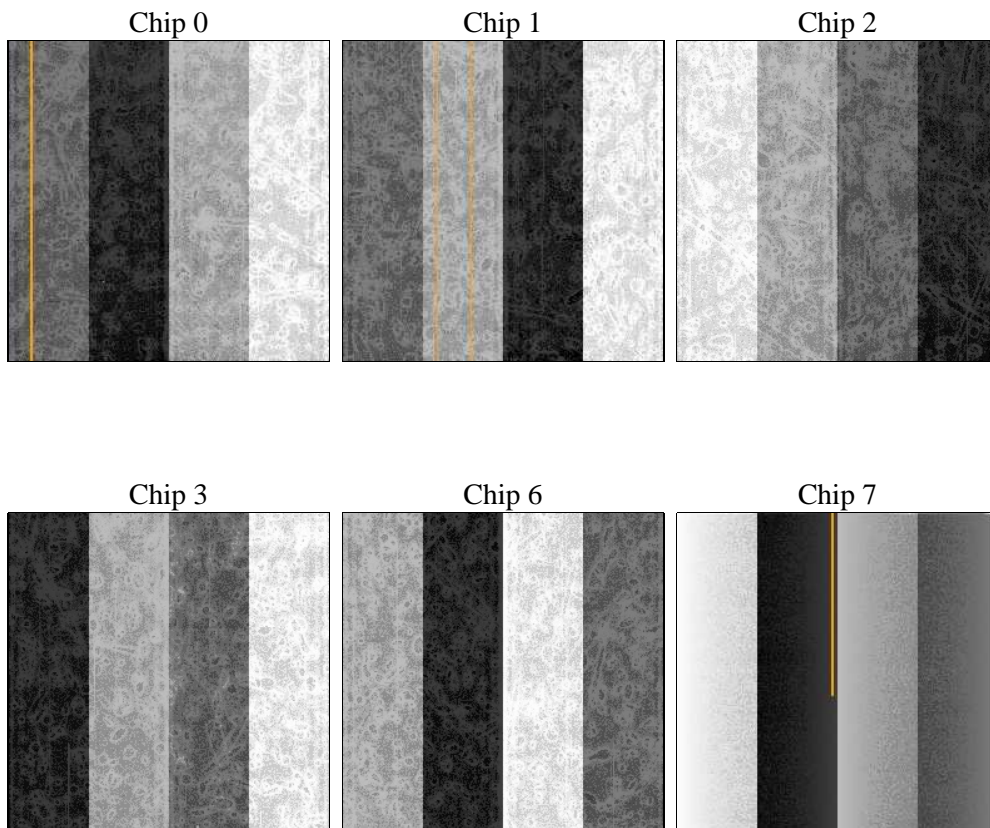
2 OBI

2.1 OBI

2.1.1 Images



2.1.2 Bias



2.1.3 Parameters

obi_num	0	Obi number	sched_exp_time	3200.000000	[s] Scheduled observation exposure time
ascdsver	8.4.5	Processing system revision	ontime	2953.6000027359	Sum of GTIs [s]
caldsver	4.5.1.1	 	ontime0	2953.6000027359	Sum of GTIs [s]
date	2012-09-22T07:36:26	Date and time of file creation	ontime1	2953.6000027359	Sum of GTIs [s]
revision	4	Processing version of data	ontime2	2953.6000027359	Sum of GTIs [s]
			ontime3	2953.6000027359	Sum of GTIs [s]
			ontime6	2953.6000027359	Sum of GTIs [s]
			ontime7	2953.6000027359	Sum of GTIs [s]
			l1events	131069	Number of level 1 events

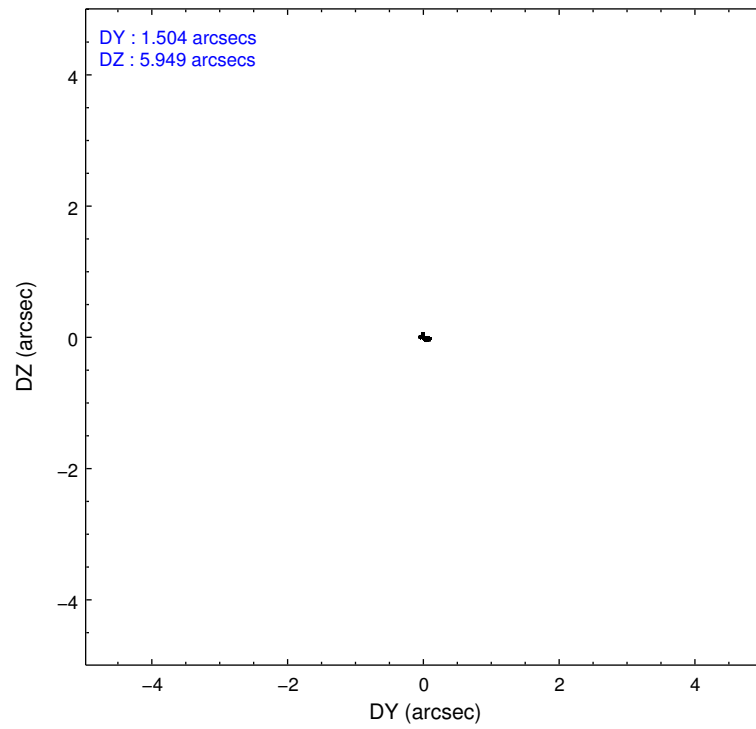
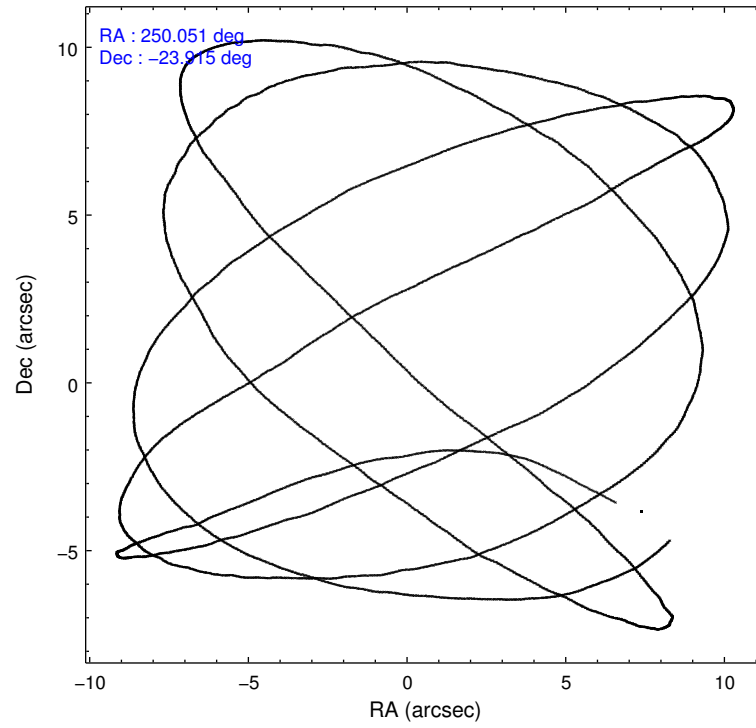
2.1.4 Events

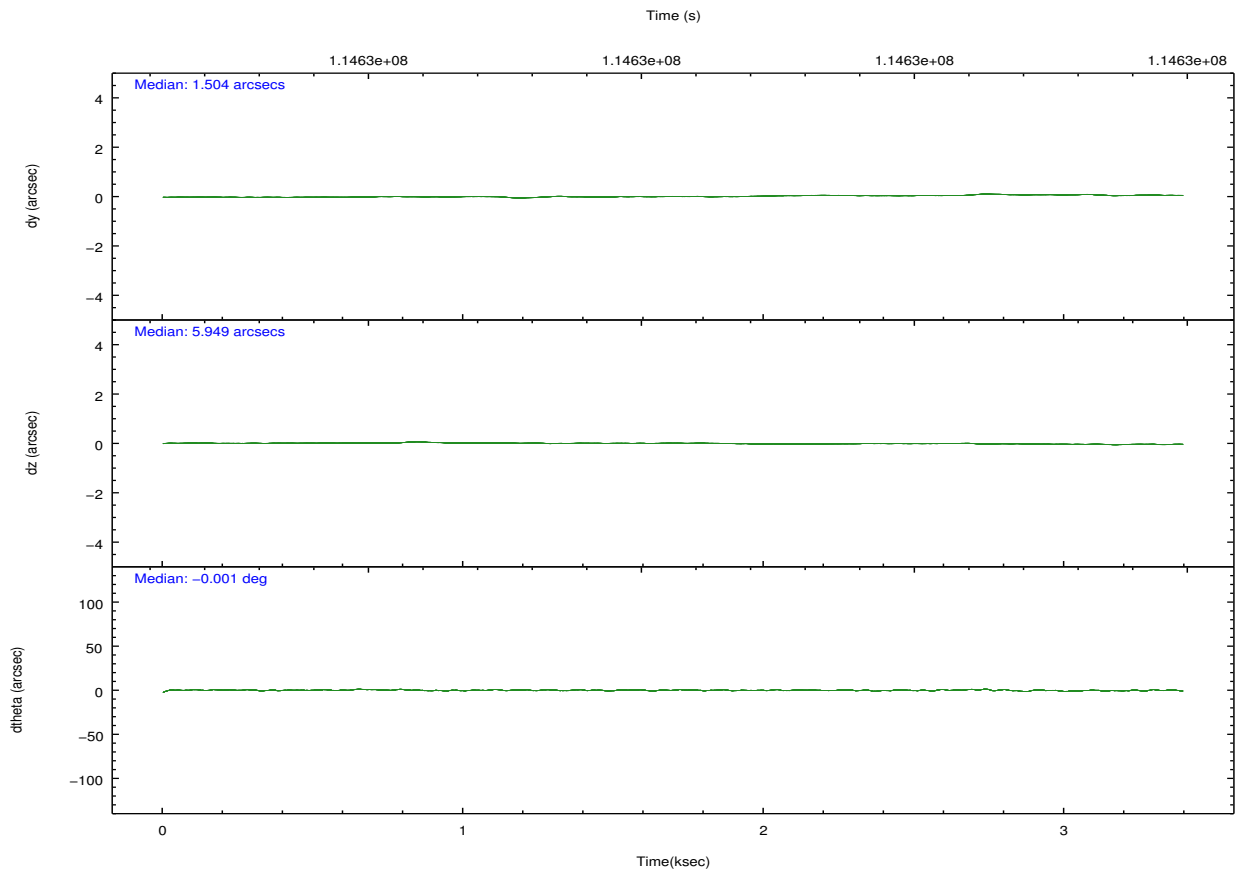
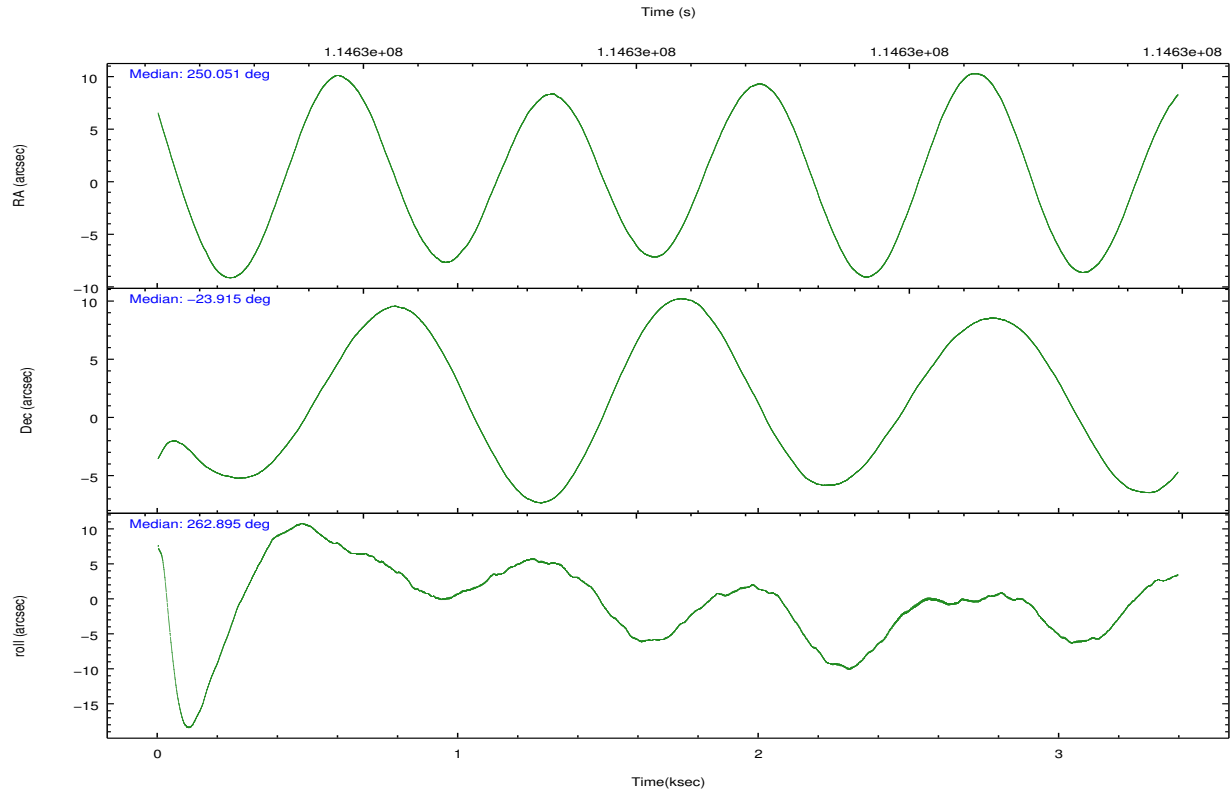
	ccd 0	ccd 1	ccd 2	ccd 3	ccd 6	ccd 7		ccd 0	ccd 1	ccd 2	ccd 3	ccd 6	ccd 7
level 1 events	19036	20396	22222	20039	23292	26084	grade 0 events	1344	1341	1287	1446	1145	1127
rejected events	16141	17410	19456	17035	20576	14629		7%	6%	5%	7%	4%	4%
rejected %	84%	85%	87%	85%	88%	56%	grade 1 events	12	8	5	14	14	23
								0%	0%	0%	0%	0%	0%
							grade 2 events	581	607	616	587	575	2386
								3%	2%	2%	2%	2%	9%
							grade 3 events	270	265	209	254	286	1052
								1%	1%	0%	1%	1%	4%
							grade 4 events	238	281	229	221	239	1021
								1%	1%	1%	1%	1%	3%
							grade 5 events	715	707	617	739	822	2480
								3%	3%	2%	3%	3%	9%
							grade 6 events	462	501	428	499	472	5881
								2%	2%	1%	2%	2%	22%
							grade 7 events	15414	16686	18831	16279	19739	12114
								80%	81%	84%	81%	84%	46%

2.2 Compared Parameters

Parameter	Planned	Actual	Parameter	Planned	Actual
Instrument	ACIS	ACIS	Obspar format version number	7	7
Detector	ACIS-012367	ACIS-012367	Obspar file type	PREDICTED	ACTUAL
Grating	NONE	NONE	Obspar update status	NONE	UPDATED
Data mode	FAINT	FAINT	Number of optional ACIS chips dropped	0	0
Observation mode	POINTING	POINTING	On-chip summing requested	N	N
[deg] Pointing RA	250.039877	250.0515074460392	Subarray requested	NONE	NONE
[deg] Pointing Dec	-23.889073	-23.91452373160867	Alternating exposures requested	N	N
[deg] Pointing Roll	262.688372	262.9018533271565	[s] Primary exposure time	0.000000	3.2
[mm] SIM focus pos	-0.782348	-0.7809083437167272			
[mm] SIM defocus	0	0.001439871863259334			
[mm] SIM translation stage pos	-233.592463	-233.5874344608287			
[mm] SIM translation stage offset	0	-0.005018542100998502			
[s] Observation start time (MET)	114625613.184000	114624991.96262			
Observation start date	2001-08-19T16:25:49	2001-08-19T16:16:31			
[s] Observation end time (MET)	114628813.184000	114629416.88779			
Observation end date	2001-08-19T17:19:09	2001-08-19T17:30:16			
Read mode	TIMED	TIMED			

2.3 Aspect



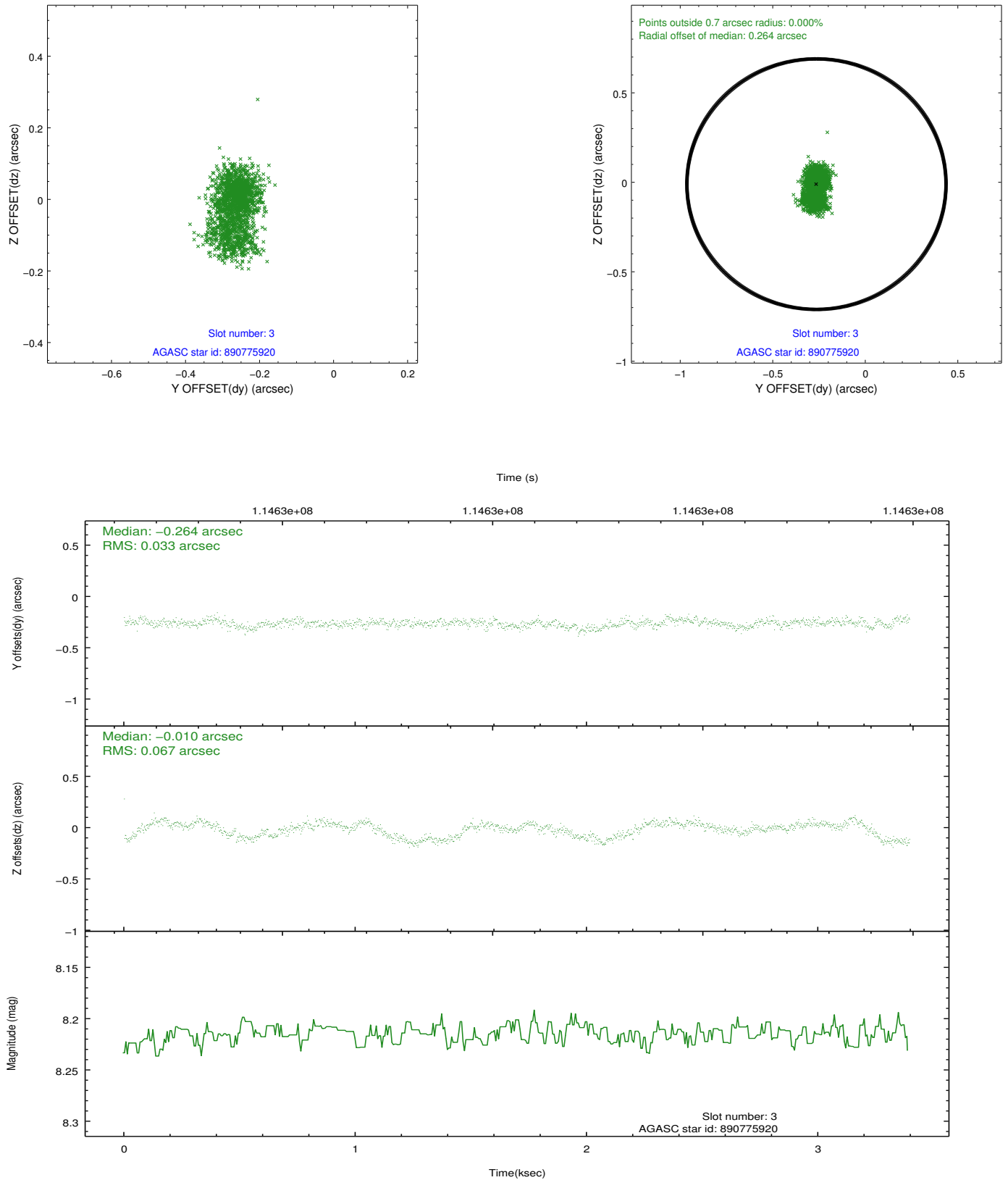


Slot Statistics

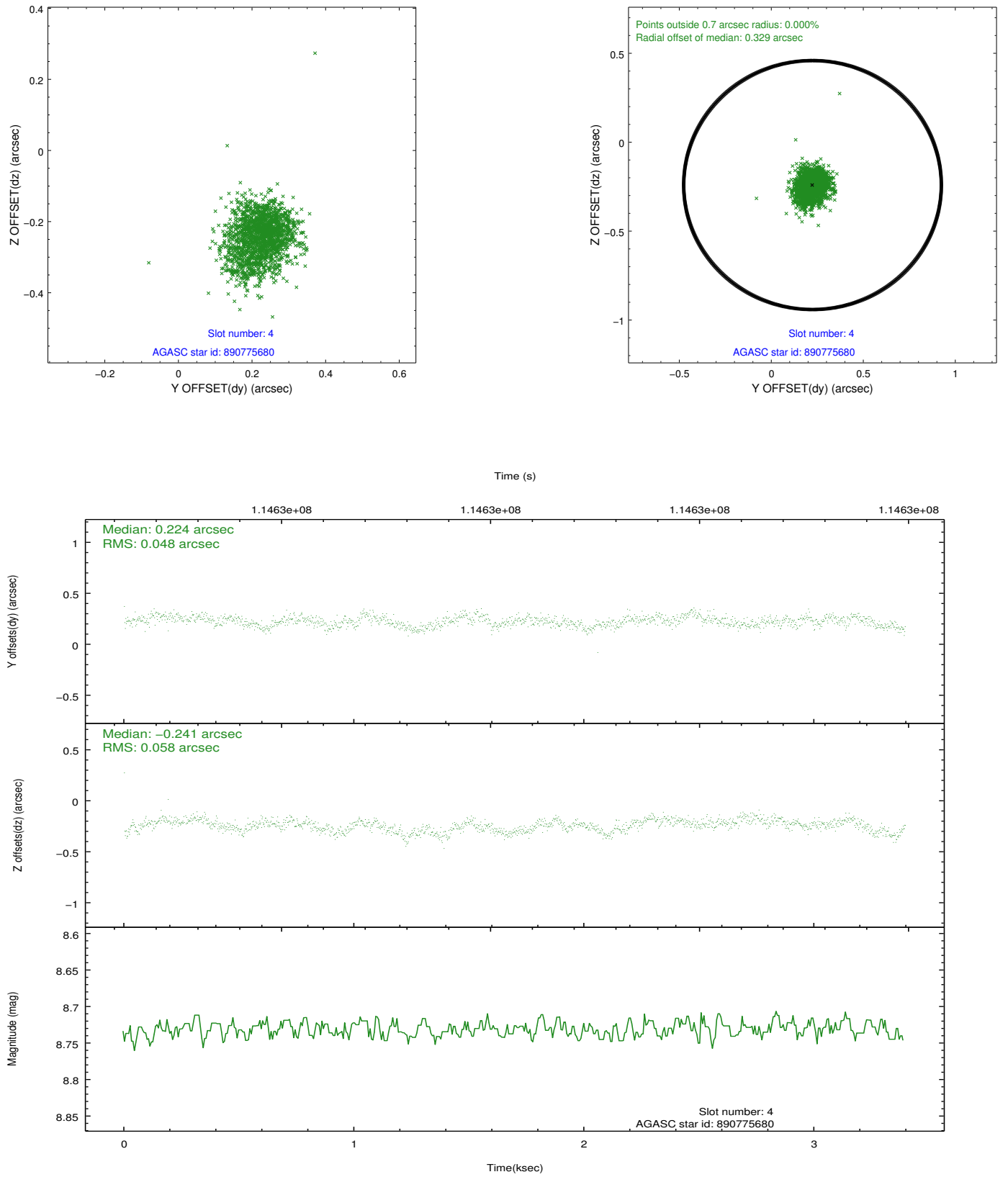
slot	status	id	mag	n_pts	med_dy	med_dz	dr1	dr2	ra	dec	mean_y	mean_z
0	FID	ACIS-I-1	7.25	828	-0.015	0.018	0.006	0.011	0.000000	0.000000	938.29	-829.30
1	FID	ACIS-I-5	7.24	828	-0.049	0.035	0.007	0.010	0.000000	0.000000	-1808.78	1067.32
2	FID	ACIS-I-6	7.27	828	-0.027	0.017	0.006	0.011	0.000000	0.000000	401.84	1713.88
3	GUIDE	890775920	8.21	1657	-0.264	-0.010	0.077	0.136	250.305809	-23.324119	-2128.63	613.69
4	GUIDE	890775680	8.73	1655	0.224	-0.241	0.080	0.126	249.639855	-24.132128	1036.25	-1191.06
5	GUIDE	891299792	8.41	1657	0.079	0.102	0.078	0.124	250.360649	-24.402368	1700.89	1278.64
6	GUIDE	891292680	9.91	1656	0.344	0.344	0.145	0.225	250.639693	-24.632888	2411.60	2290.43
7	GUIDE	890772080	10.02	1656	-0.379	-0.188	0.218	0.352	249.550711	-23.261101	-2032.35	-1890.50

2.4 Star Slots

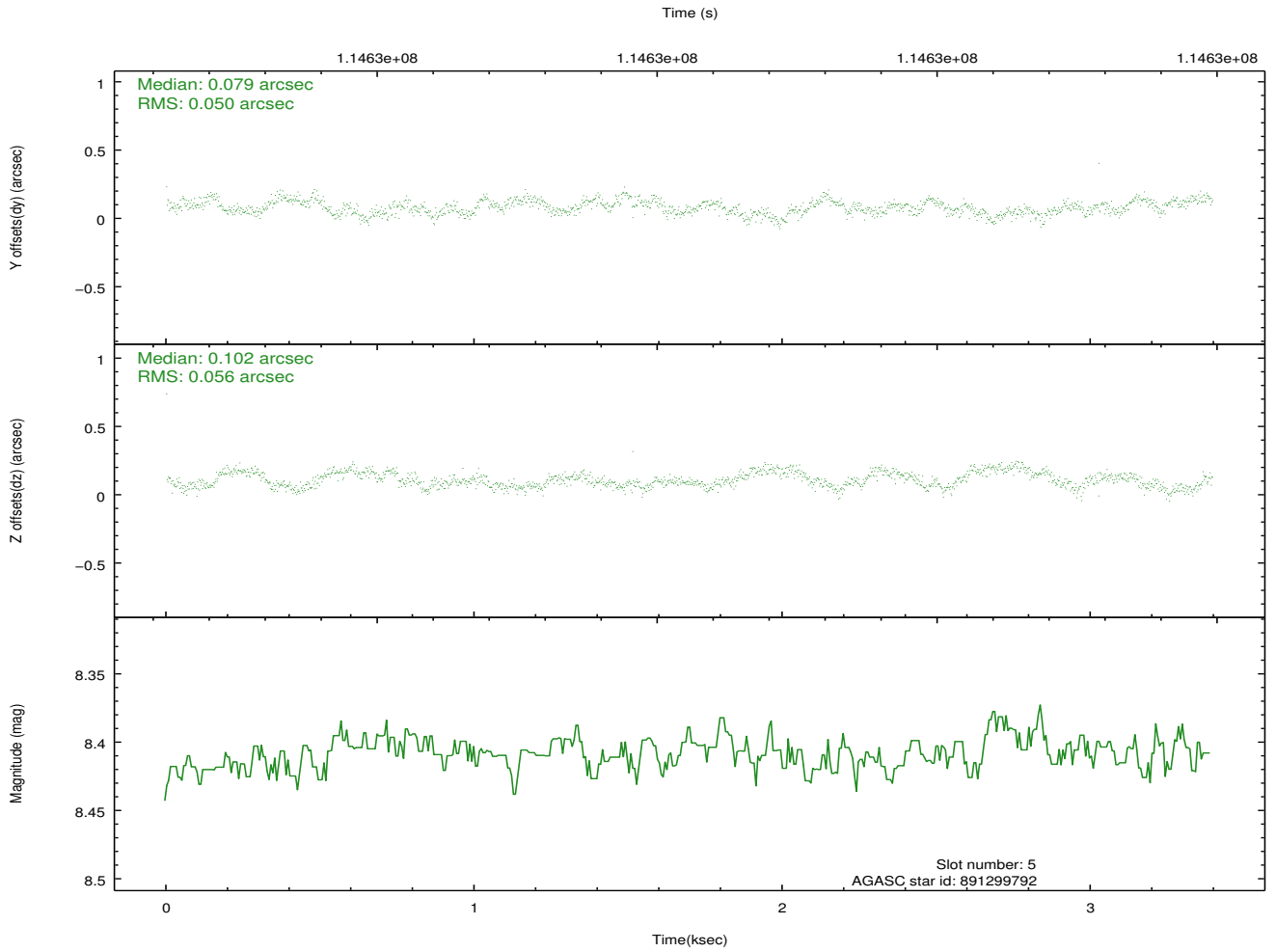
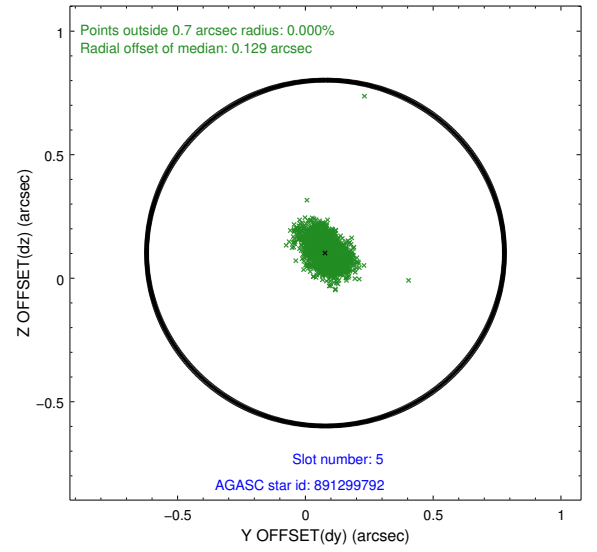
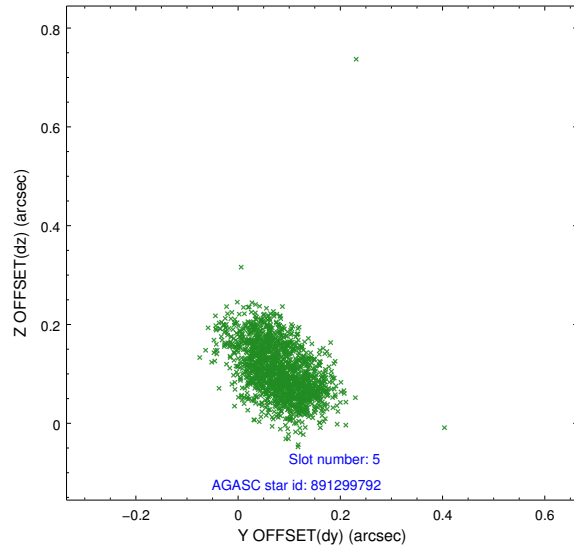
2.4.1 Slot 3



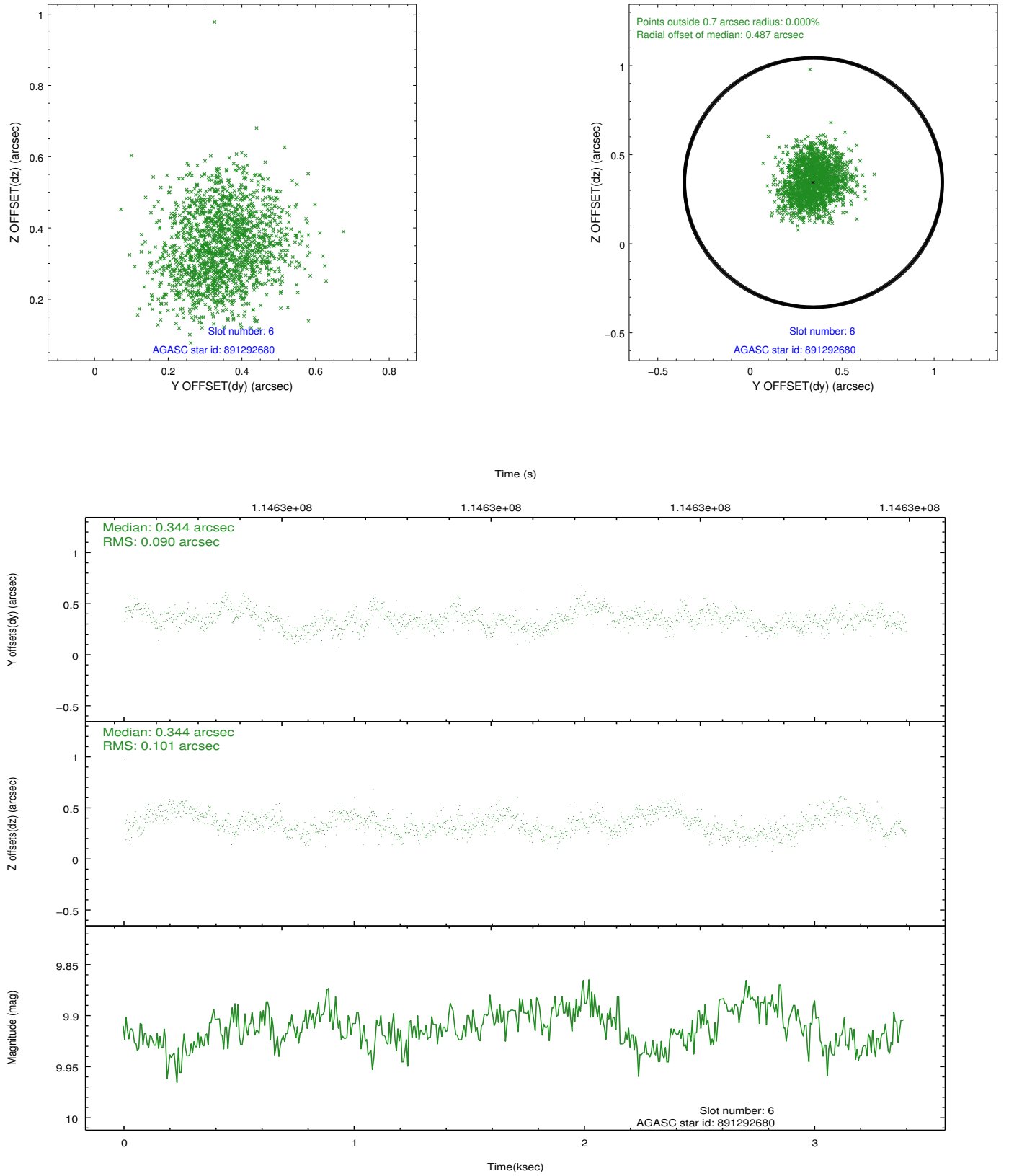
2.4.2 Slot 4



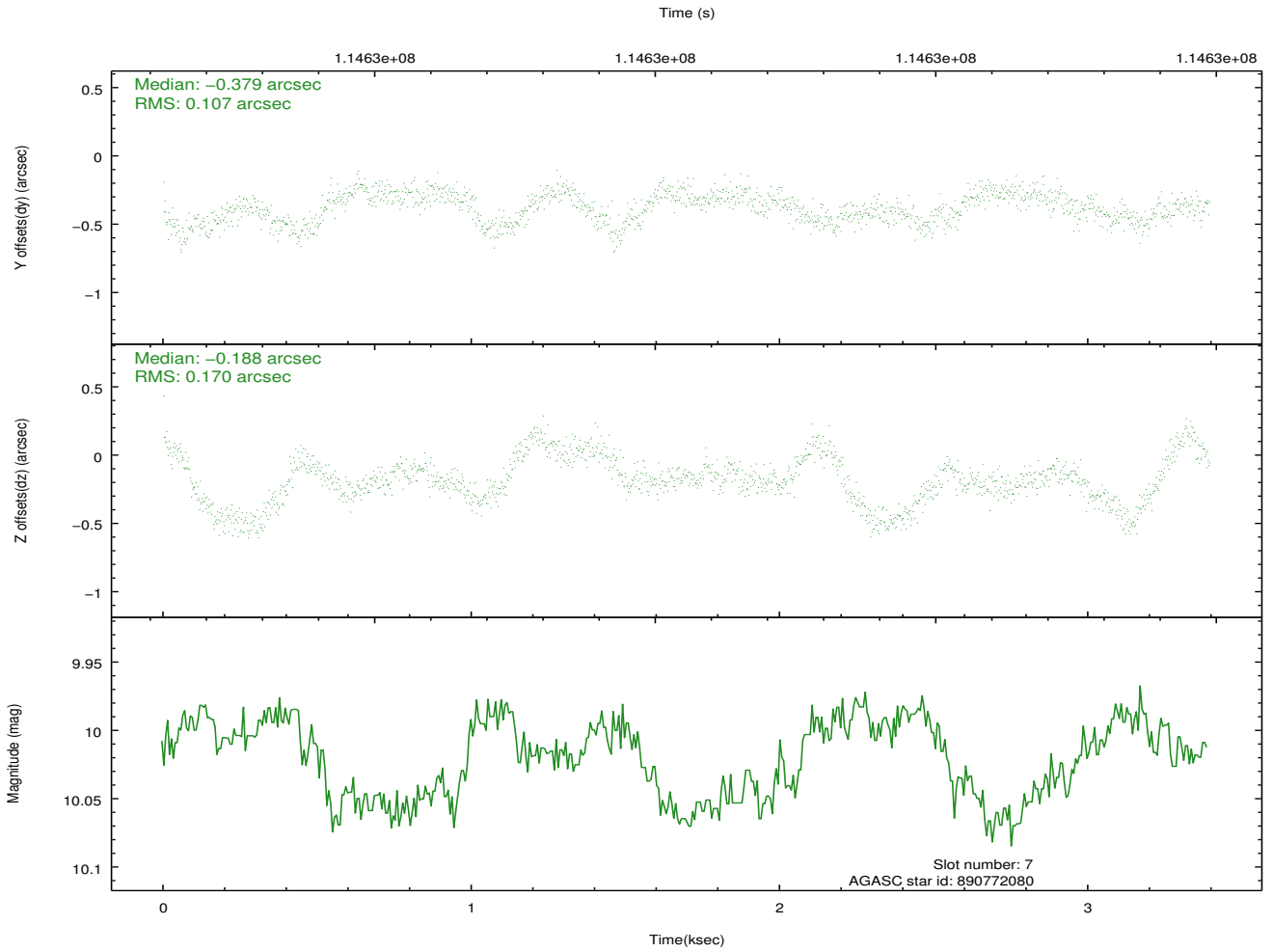
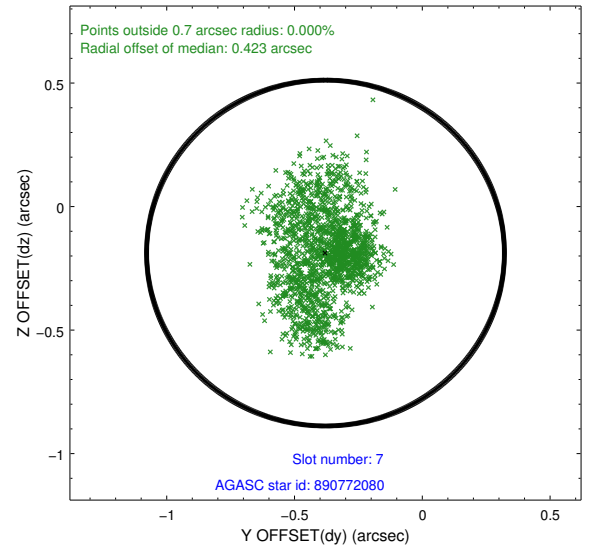
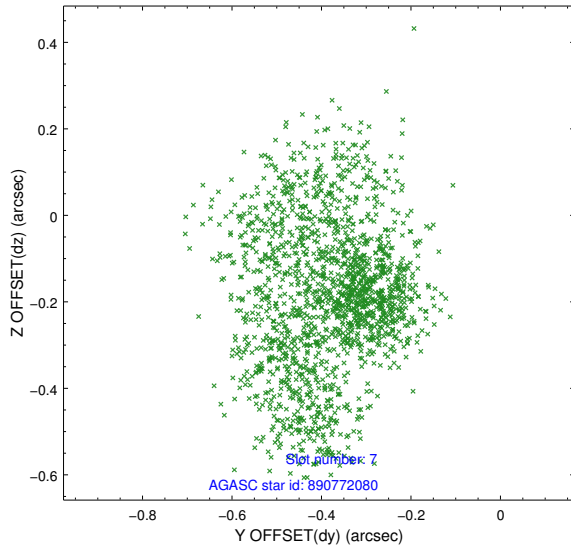
2.4.3 Slot 5



2.4.4 Slot 6

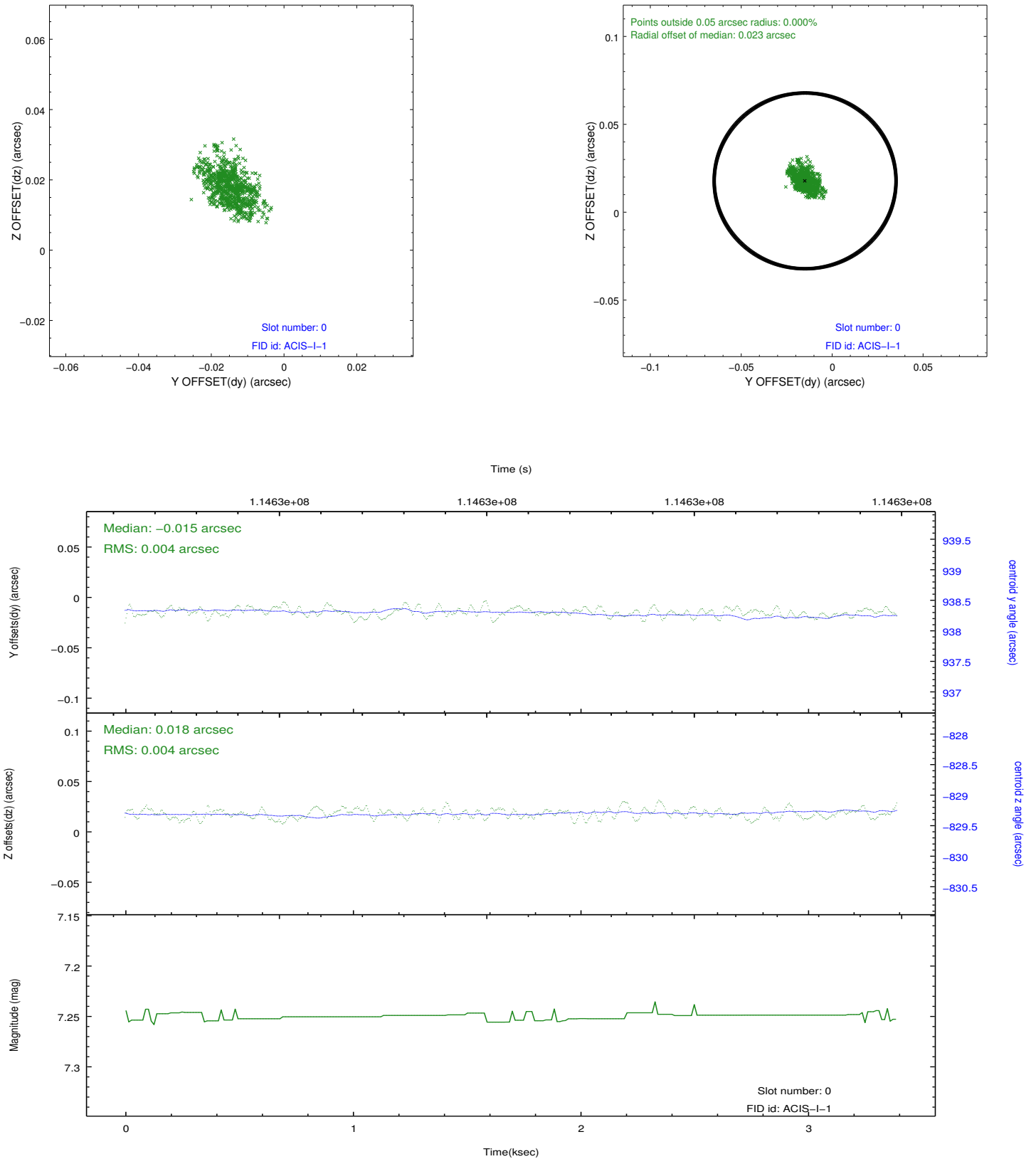


2.4.5 Slot 7

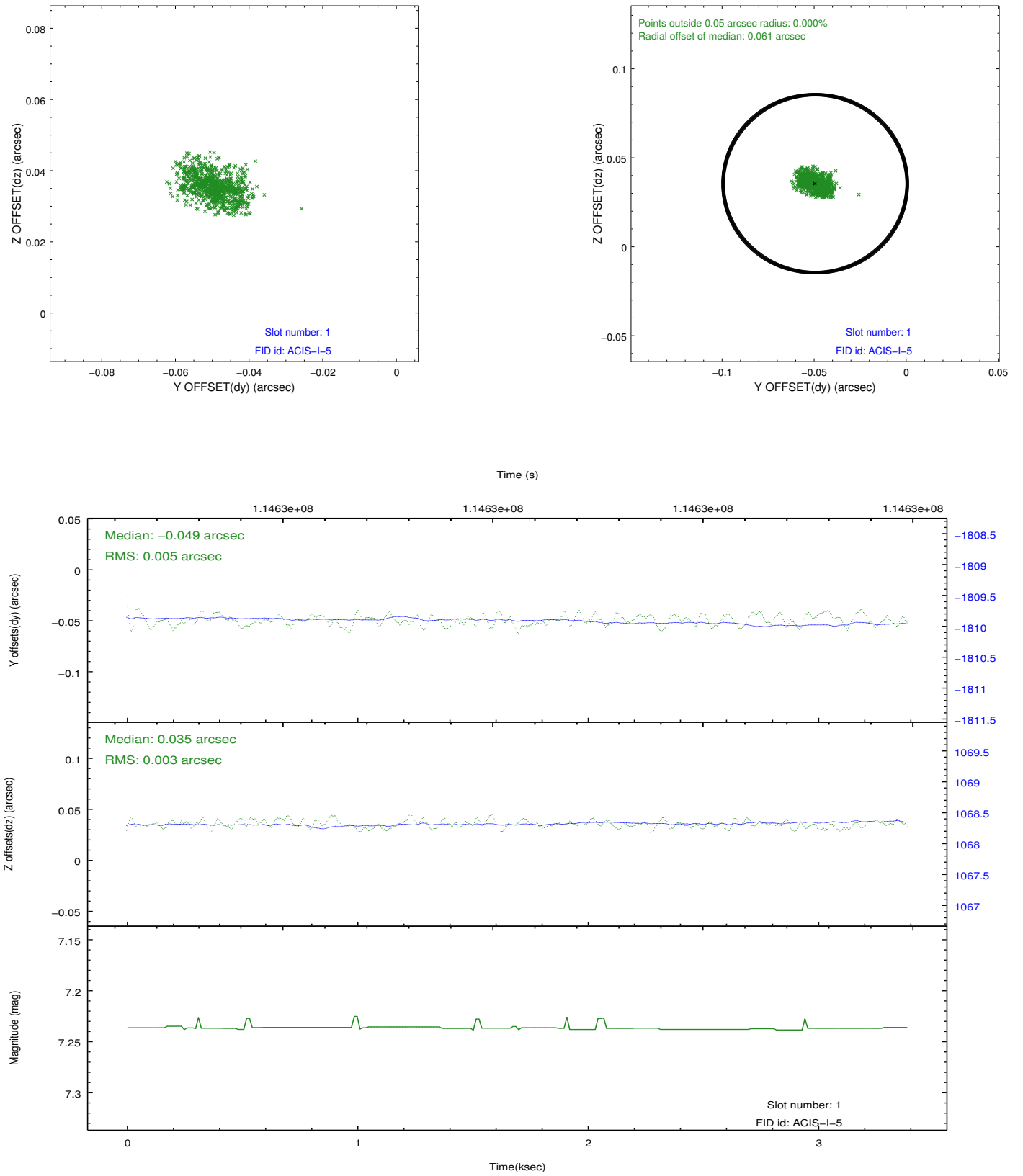


2.5 FID Slots

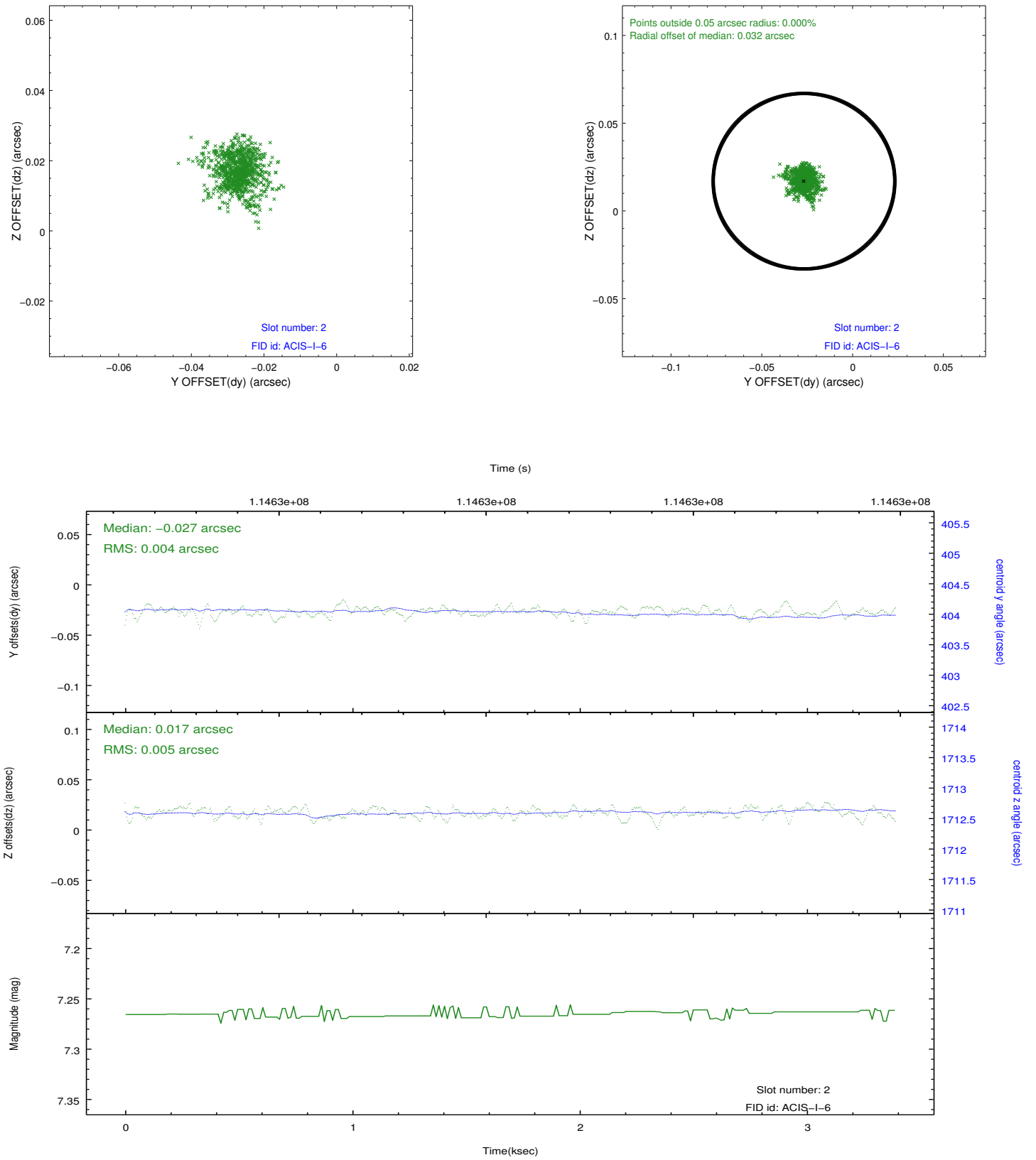
2.5.1 Slot 0



2.5.2 Slot 1



2.5.3 Slot 2



A Summary

A.1 Status

V&V Scientist	Jen Lauer
V&V Date (YYYY-MM-DD)	2012.09.25
V&V Edition	1
V&V Disposition and Status	OK
V&V Charge Time	2.956

A.2 Comments