

V&V Reference Report

L2 ASCDS Version : 8.4.4

Observation 9332 - L2 Version 2
Chandra X-Ray Center

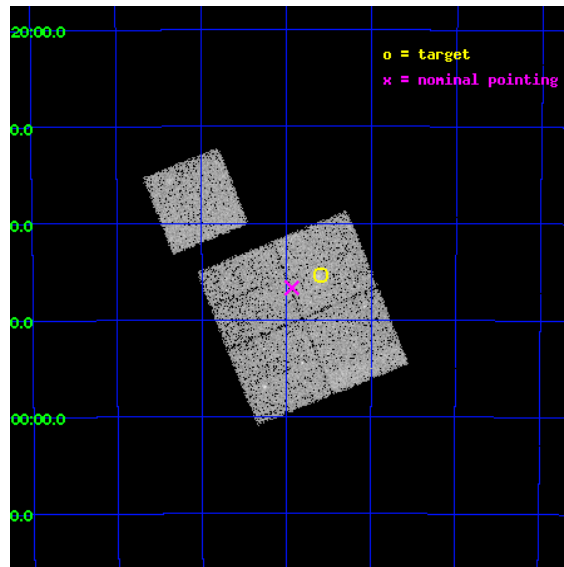
L2 Processing Date : May 28 2012

Contents

1	Front	2
2	OBI	3
2.1	OBI	3
2.1.1	Images	3
2.1.2	Bias	3
2.1.3	Parameters	4
2.1.4	Events	4
2.2	Compared Parameters	5
2.3	Aspect	6
2.4	Star Slots	9
2.4.1	Slot 3	9
2.4.2	Slot 4	10
2.4.3	Slot 5	11
2.4.4	Slot 6	12
2.4.5	Slot 7	13
2.5	FID Slots	14
2.5.1	Slot 0	14
2.5.2	Slot 1	15
2.5.3	Slot 2	16
A	Summary	17
A.1	Status	17
A.2	Comments	17

1 Front

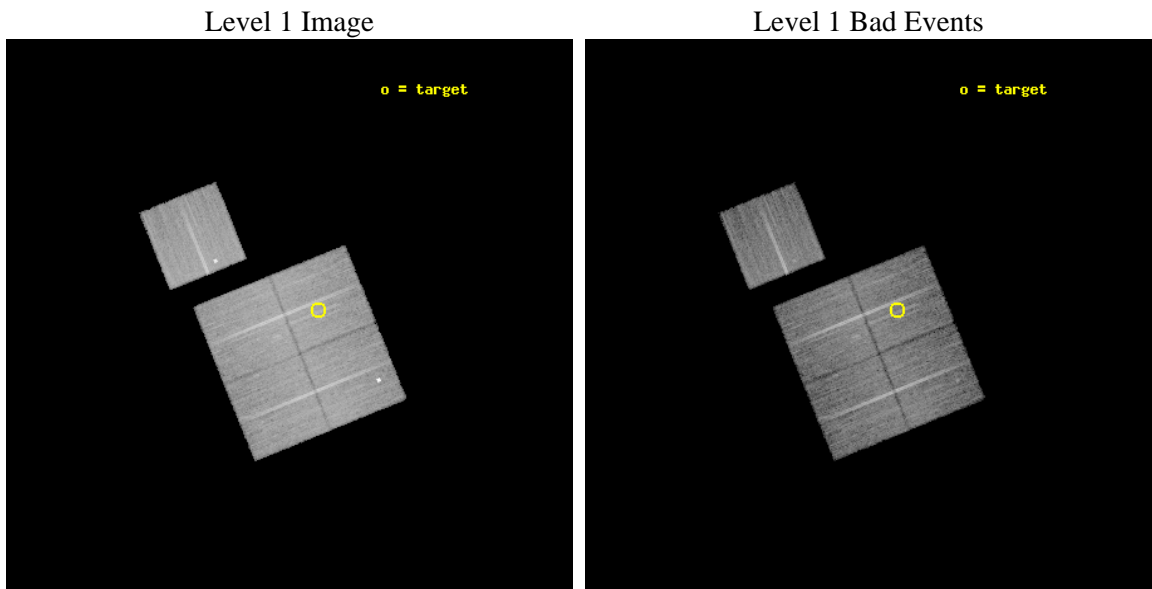
seq_num	800669	Sequence number
obs_id	9332	Observation id
title	Chandra Observations of SZ-selected Galaxy Clusters Detected by the South Pole Telescope	Proposal title
observer	Professor Gordon Garmire	Principal investigator
object	SPT-CL 0547-5345	Source name
dtcycle	0	
cycle	P	events from which exps? Prim/Second/Both
ra_targ	86.65	Observer's specified target RA [deg]
dec_targ	-53.756	Observer's specified target Dec [deg]
ra_nom	86.734026247641	Nominal RA [deg]
dec_nom	-53.778183693582	Nominal Dec [deg]
roll_nom	337.98444424512	Nominal Roll [deg]
revision	2	Processing version of data
ontime	15078.038189352	Sum of GTIs [s]
livetime	14881.032520117	Livetime [s]
ontime0	15084.197100043	Sum of GTIs [s]
ontime1	15084.238140047	Sum of GTIs [s]
ontime2	15081.138169706	Sum of GTIs [s]
ontime3	15078.038189352	Sum of GTIs [s]
ontime6	15081.015029609	Sum of GTIs [s]
l2events	55008	Number of level 2 events



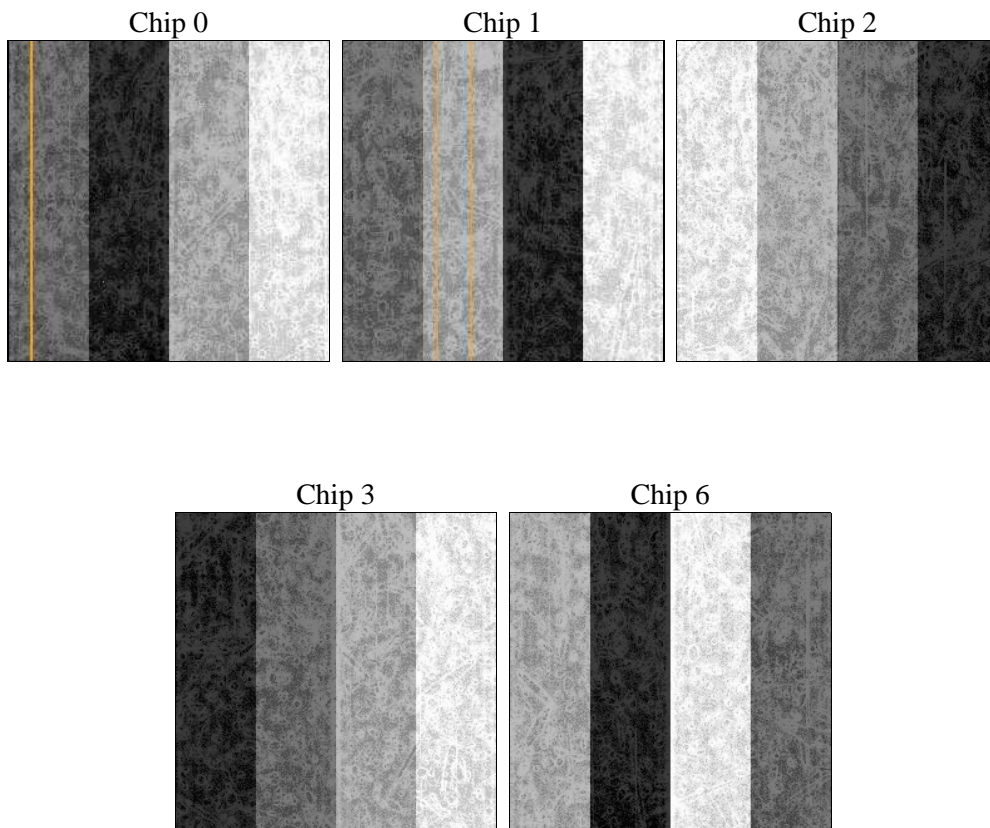
2 OBI

2.1 OBI

2.1.1 Images



2.1.2 Bias



2.1.3 Parameters

obi_num	0	Obi number	sched_exp_time	15000.000000	[s] Scheduled observation exposure time
ascdsver	8.4.4	Processing system revision	ontime	15078.038189352	Sum of GTIs [s]
caldsver	4.4.9	 	ontime0	15084.197100043	Sum of GTIs [s]
date	2012-05-28T12:53:04	Date and time of file creation	ontime1	15084.238140047	Sum of GTIs [s]
revision	2	Processing version of data	ontime2	15081.138169706	Sum of GTIs [s]
			ontime3	15078.038189352	Sum of GTIs [s]
			ontime6	15081.015029609	Sum of GTIs [s]
			l1events	629849	Number of level 1 events

2.1.4 Events

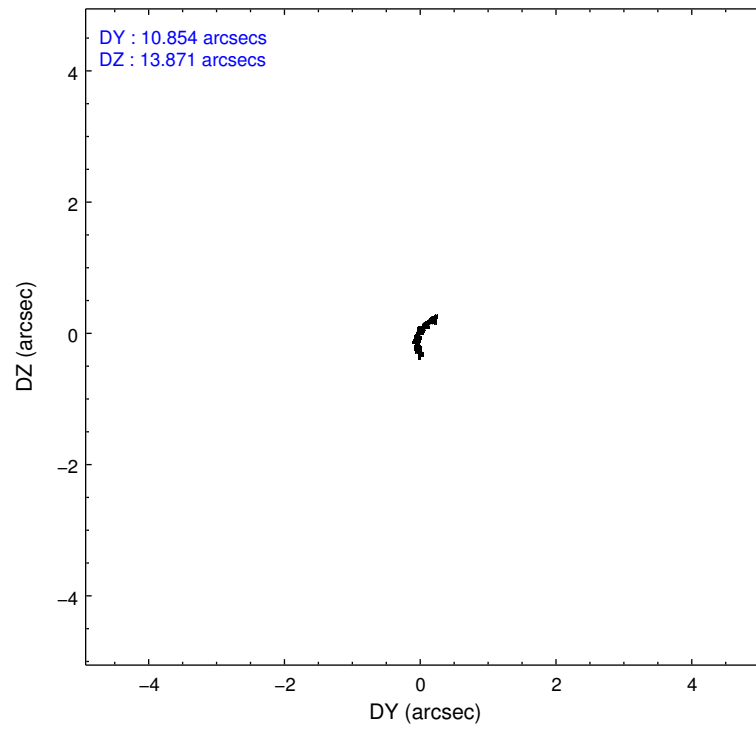
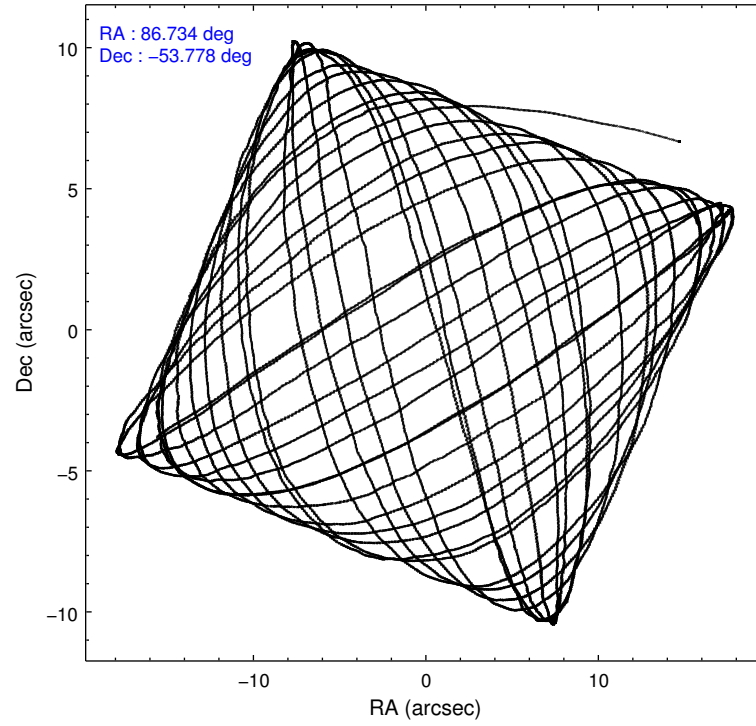
	ccd 0	ccd 1	ccd 2	ccd 3	ccd 6
level 1 events	118497	122854	134519	124838	129141
rejected events	105542	103738	122048	112168	113384
rejected %	89%	84%	90%	89%	87%

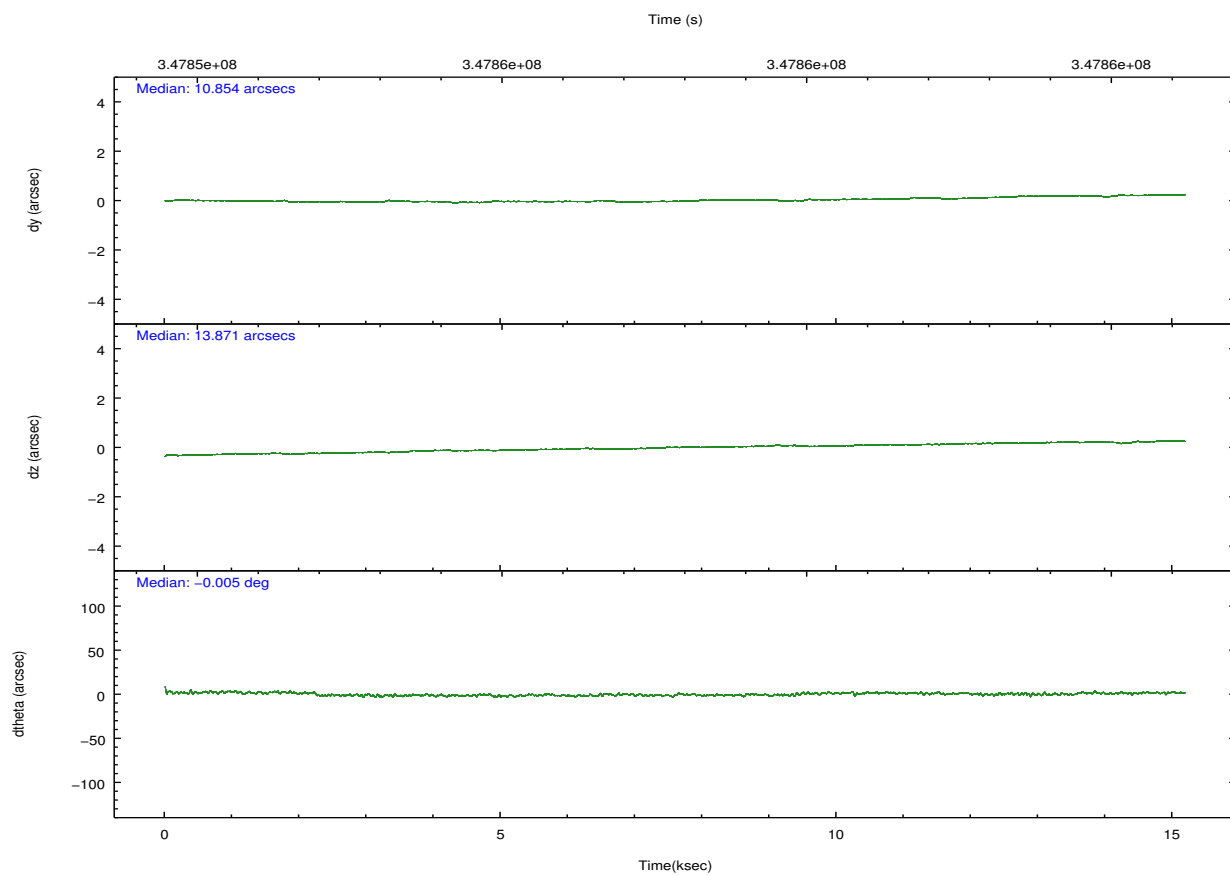
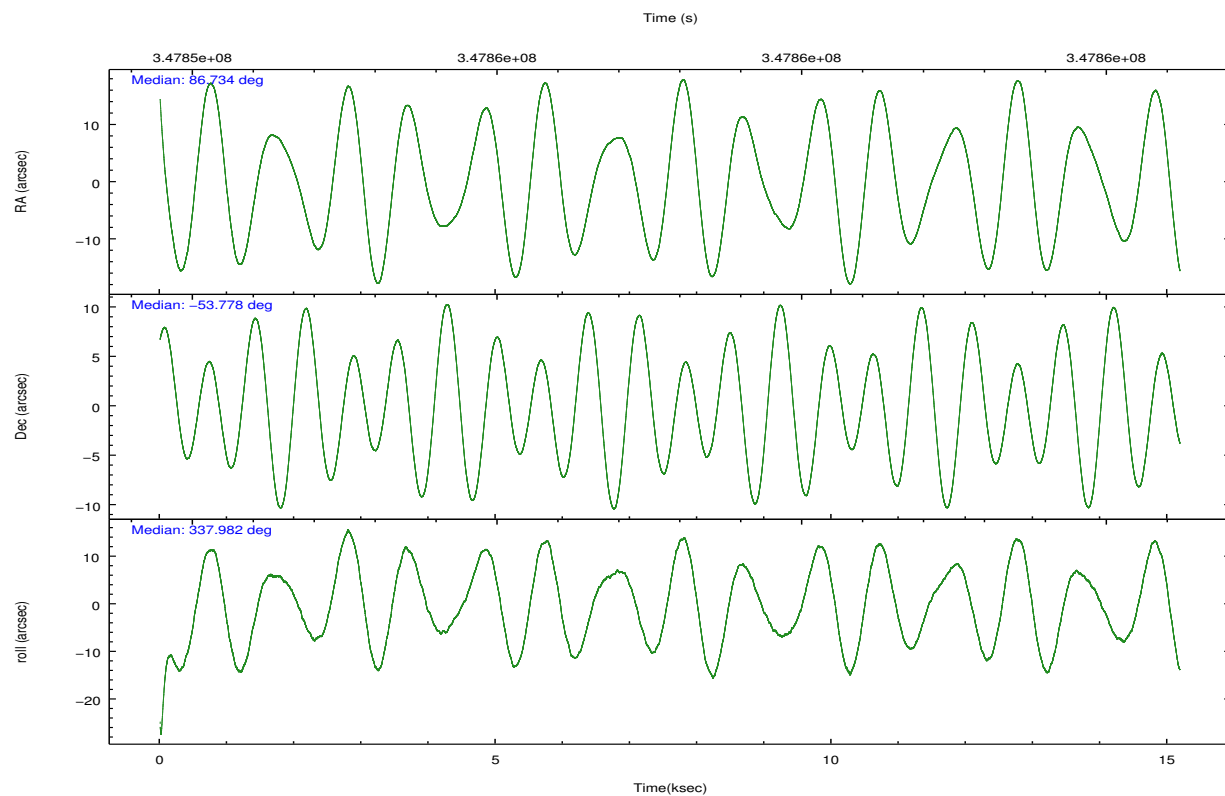
	ccd 0	ccd 1	ccd 2	ccd 3	ccd 6
grade 0 events	4584	9612	4453	4724	4581
	3%	7%	3%	3%	3%
grade 1 events	74	101	80	82	78
	0%	0%	0%	0%	0%
grade 2 events	3093	3345	2971	2761	5391
	2%	2%	2%	2%	4%
grade 3 events	1432	1567	1296	1332	1400
	1%	1%	0%	1%	1%
grade 4 events	1284	1555	1388	1351	1433
	1%	1%	1%	1%	1%
grade 5 events	4778	4858	4488	5322	5076
	4%	3%	3%	4%	3%
grade 6 events	2566	3045	2364	2505	2958
	2%	2%	1%	2%	2%
grade 7 events	100686	98771	117479	106761	108224
	84%	80%	87%	85%	83%

2.2 Compared Parameters

Parameter	Planned	Actual	Parameter	Planned	Actual
Instrument	ACIS	ACIS	Obspar format version number	7	7
Detector	ACIS-01236	ACIS-01236	Obspar file type	PREDICTED	ACTUAL
Grating	NONE	NONE	Obspar update status	NONE	UPDATED
Data mode	VFAINT	VFAINT	CCD I0 on	Y	Y
Observation mode	POINTING	POINTING	CCD I1 on	Y	Y
[deg] Pointing RA	86.687960	86.73402624764054	CCD I2 on	Y	Y
[deg] Pointing Dec	-53.782131	-53.77818369358221	CCD I3 on	Y	Y
[deg] Pointing Roll	337.738614	337.9844442451213	CCD S0 on	N	N
[mm] SIM focus pos	-0.782348	-0.7809083437167272	CCD S1 on	N	N
[mm] SIM defocus	0	0.001439871863259334	CCD S2 on	O1	Y
[mm] SIM translation stage pos	-225.840463	-225.8433433320239	CCD S3 on	N	N
[mm] SIM translation stage offset	-7.752	-7.749109670905796	CCD S4 on	N	N
[s] Observation start time (MET)	347850437.184000	347849486.80701	CCD S5 on	N	N
Observation start date	2009-01-09T01:06:11	2009-01-09T00:51:26	Number of optional ACIS chips dropped	0	0
[s] Observation end time (MET)	347865437.184000	347866210.19534	On-chip summing requested	N	N
Observation end date	2009-01-09T05:16:11	2009-01-09T05:30:10	Subarray requested	NONE	NONE
Read mode	TIMED	TIMED	Alternating exposures requested	N	N
			[s] Primary exposure time	0.000000	3.1

2.3 Aspect



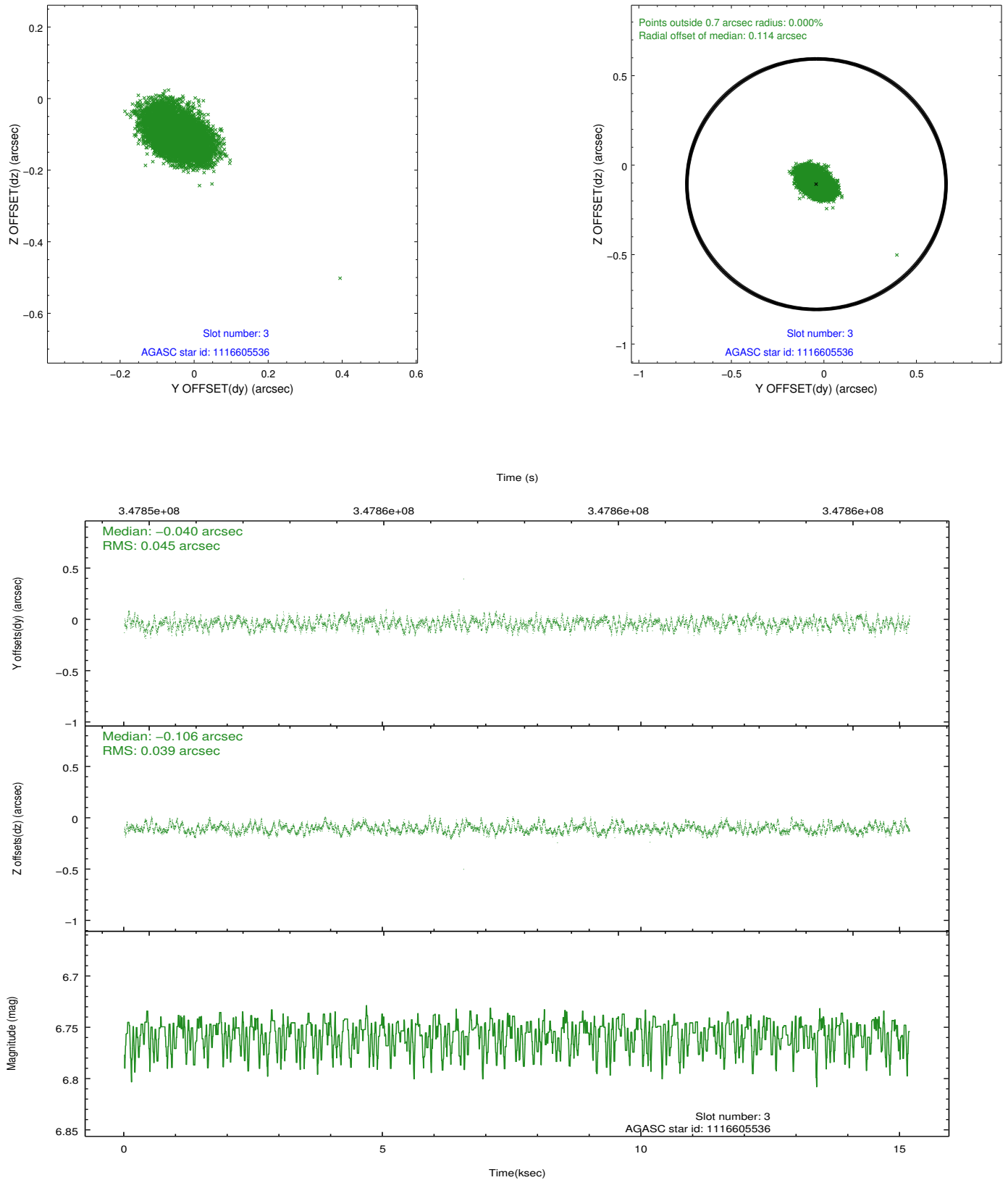


Slot Statistics

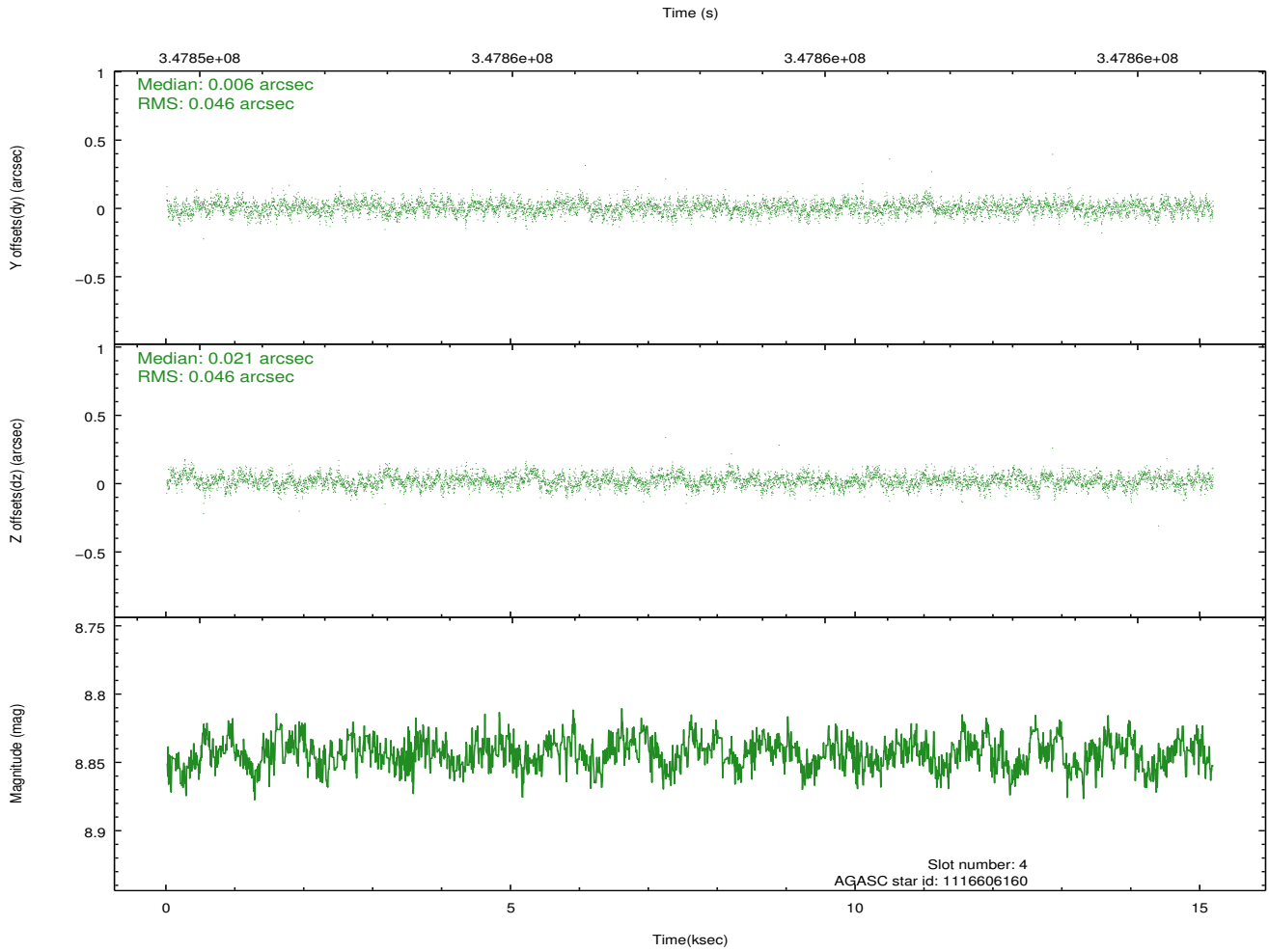
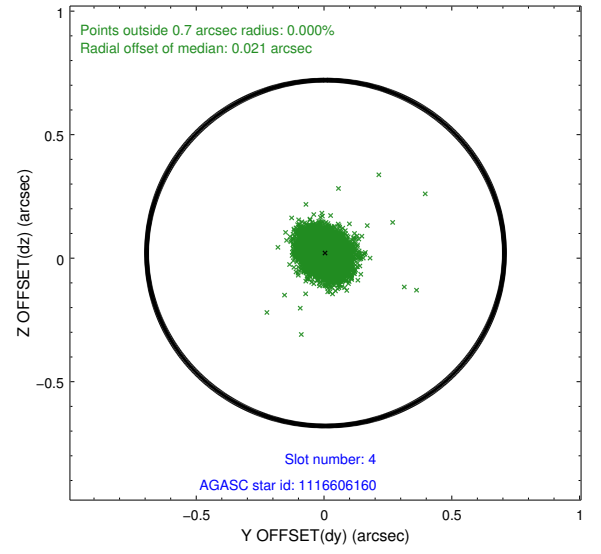
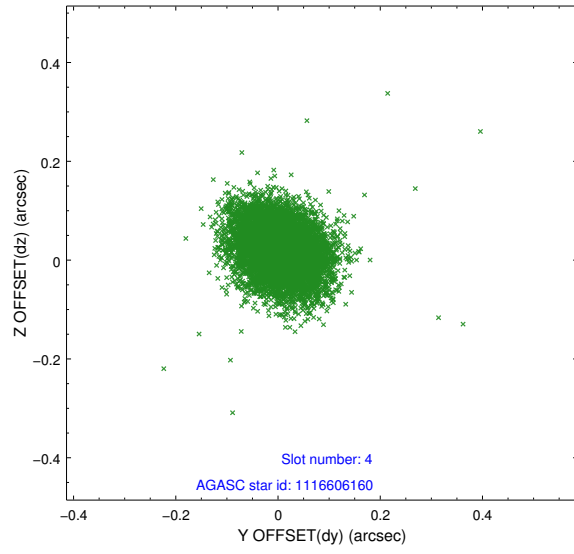
slot	status	id	mag	n_pts	med_dy	med_dz	dr1	dr2	ra	dec	mean_y	mean_z
0	FID	ACIS-I-1	7.11	3704	0.092	-0.061	0.011	0.021	0.000000	0.000000	928.69	-996.52
1	FID	ACIS-I-2	7.05	3704	-0.204	0.022	0.009	0.016	0.000000	0.000000	-765.94	-1002.11
2	FID	ACIS-I-4	7.02	3701	0.015	0.104	0.009	0.015	0.000000	0.000000	2147.83	904.29
3	GUIDE	1116605536	6.76	7407	-0.040	-0.106	0.064	0.103	86.616629	-53.219322	-908.99	1815.56
4	GUIDE	1116606160	8.84	7397	0.006	0.021	0.068	0.114	86.001781	-53.377531	-1912.60	782.90
5	GUIDE	1116738280	8.15	7404	-0.006	-0.035	0.061	0.099	87.869951	-53.655711	2169.09	1356.86
6	GUIDE	1116744312	8.87	7399	0.000	0.186	0.079	0.127	86.852265	-53.996599	614.81	-582.79
7	GUIDE	1116740808	8.29	7405	0.043	-0.063	0.069	0.109	87.655884	-53.417264	1429.87	1988.88

2.4 Star Slots

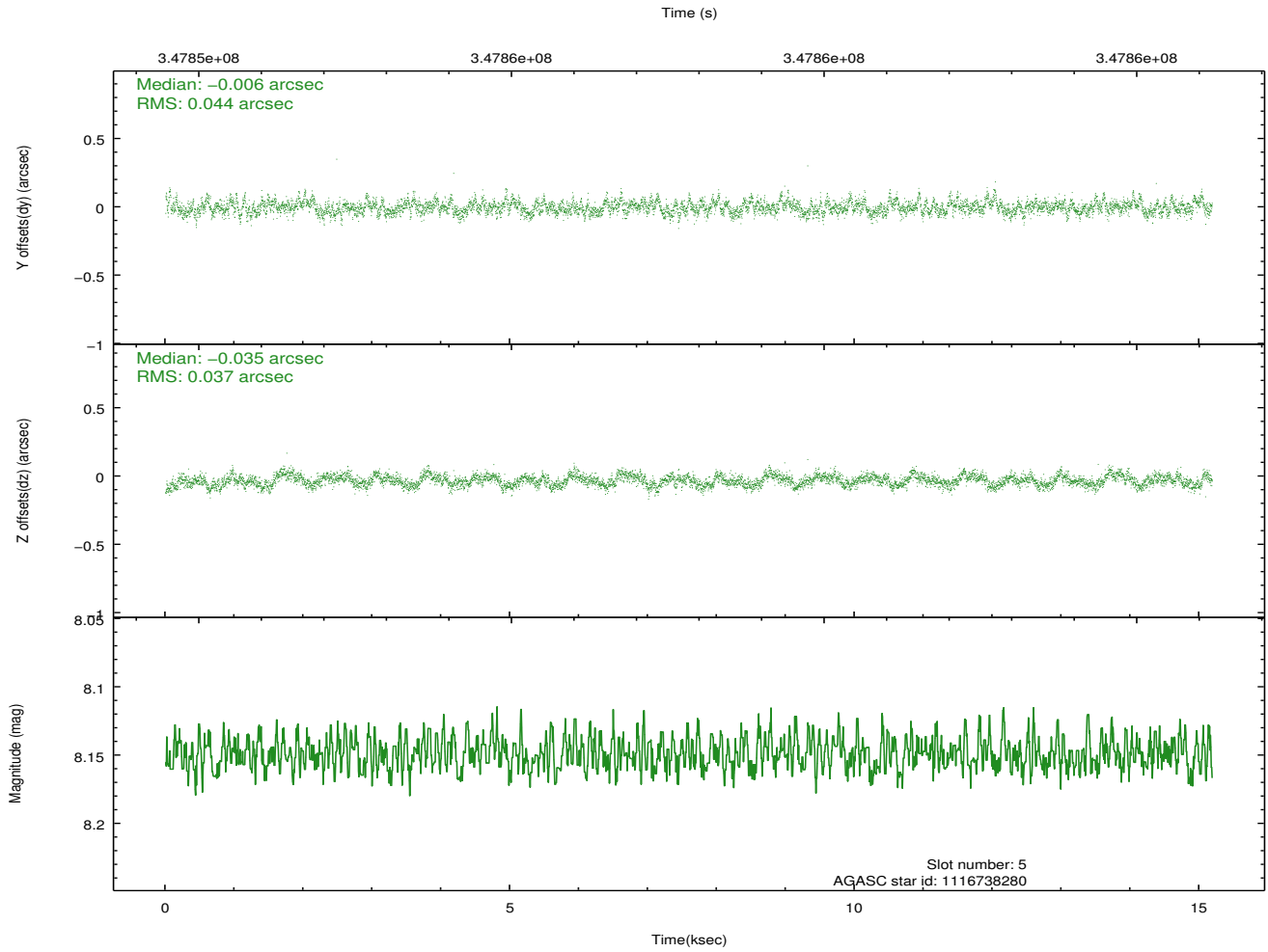
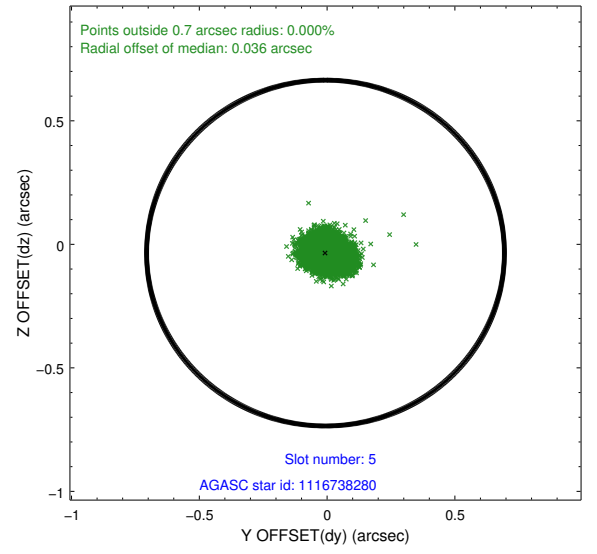
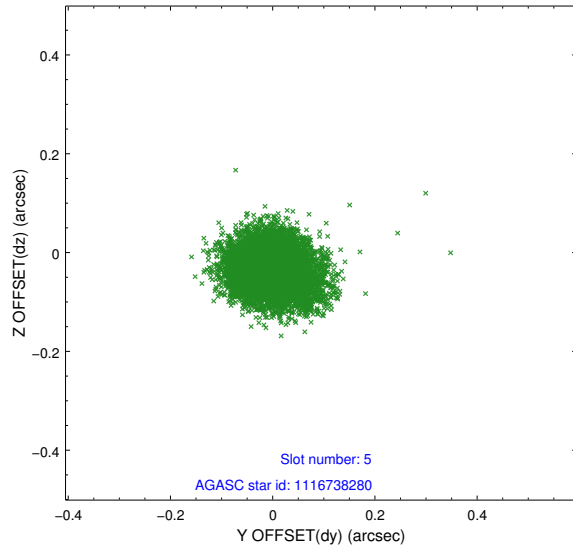
2.4.1 Slot 3



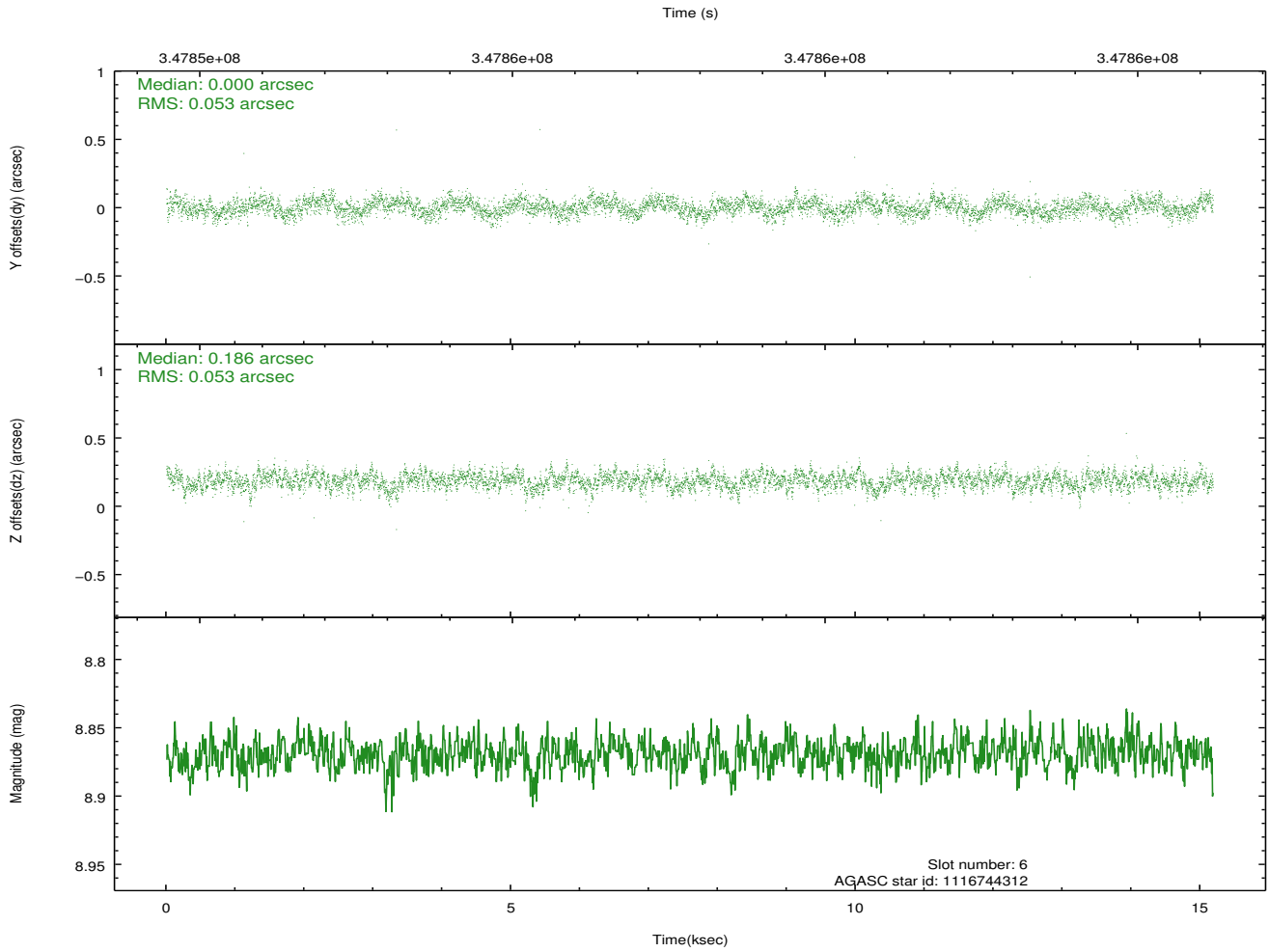
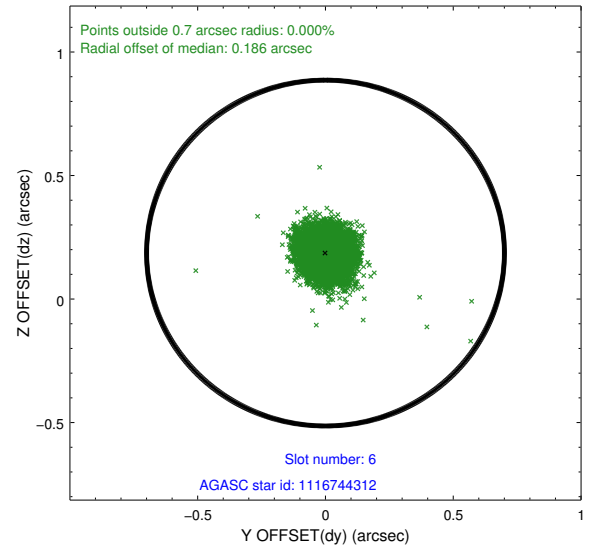
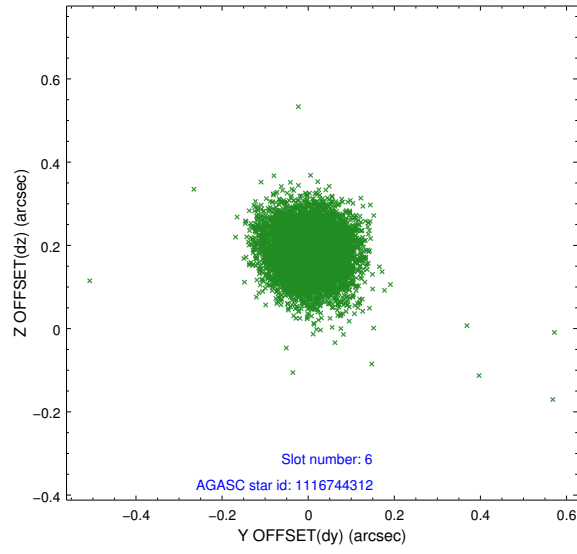
2.4.2 Slot 4



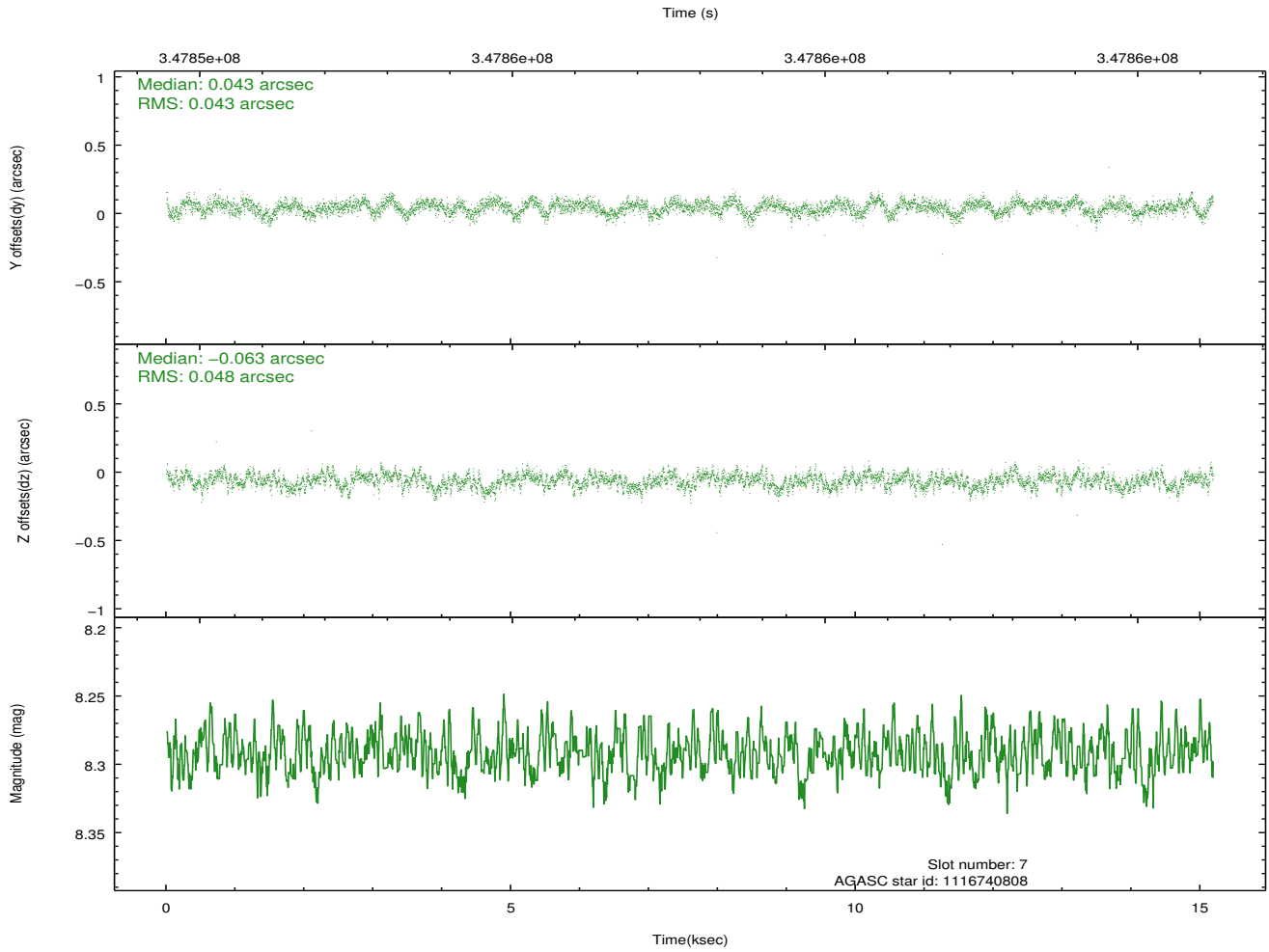
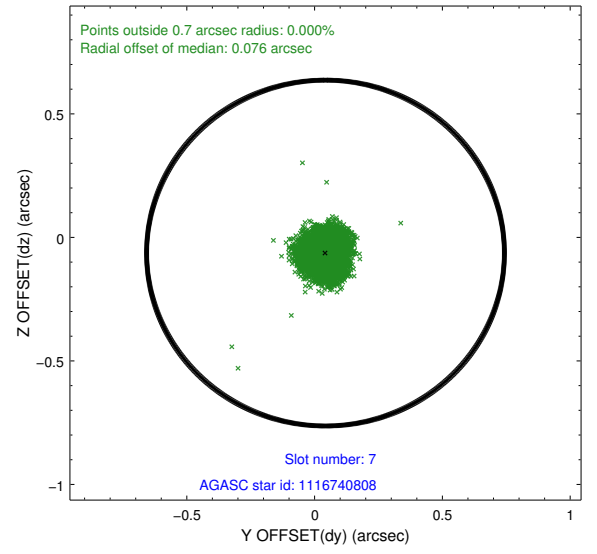
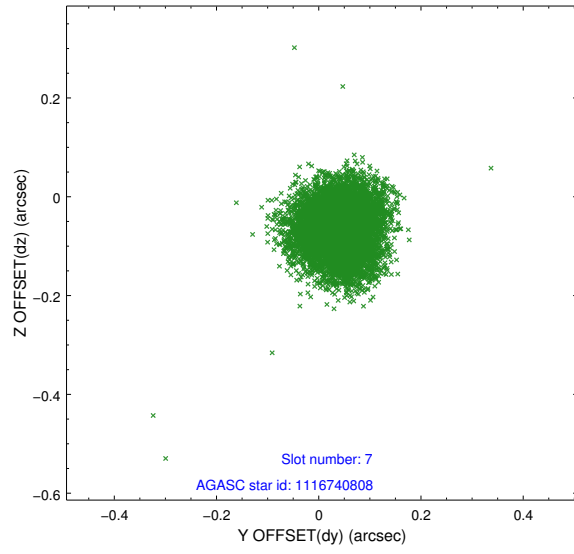
2.4.3 Slot 5



2.4.4 Slot 6

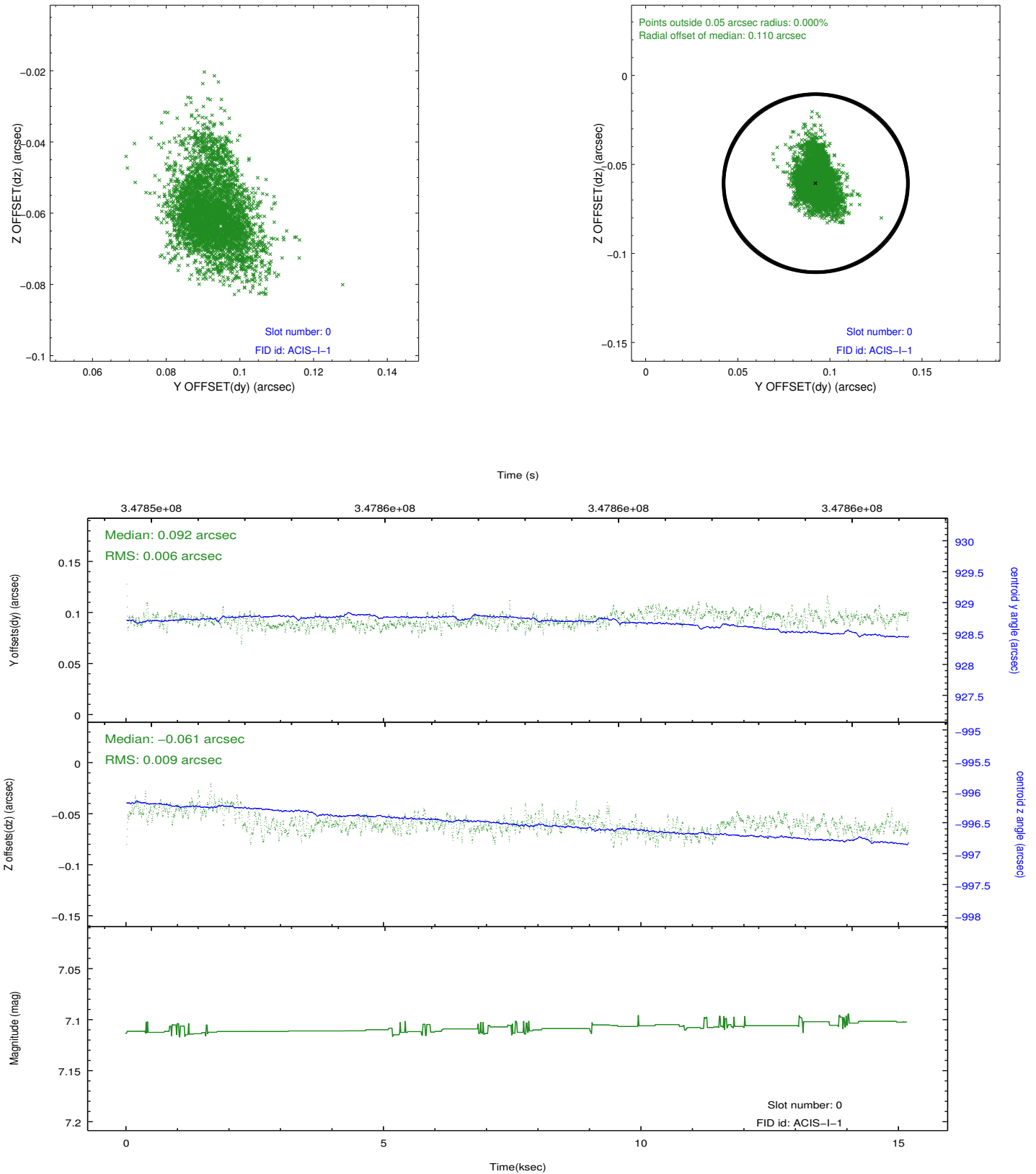


2.4.5 Slot 7

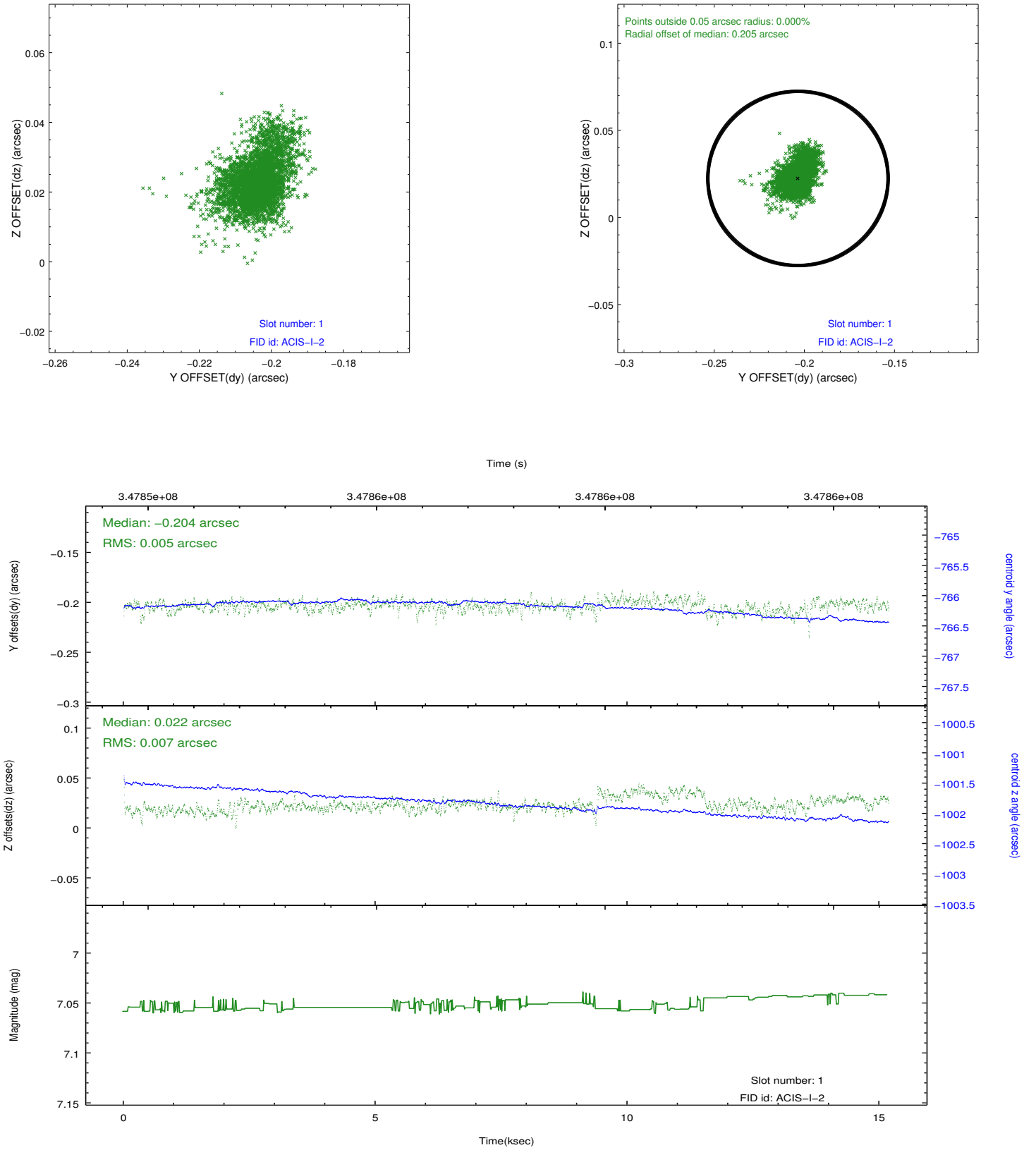


2.5 FID Slots

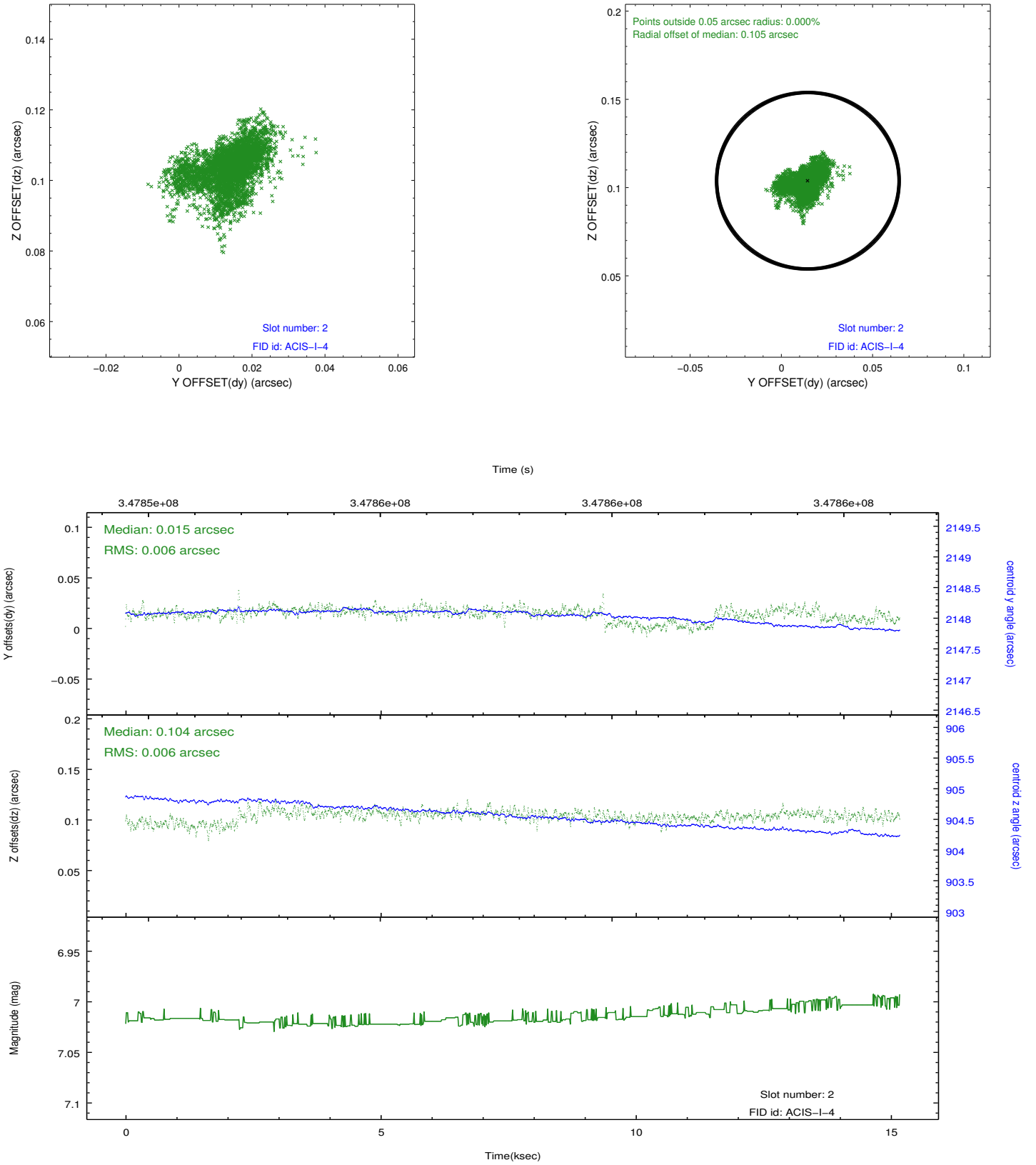
2.5.1 Slot 0



2.5.2 Slot 1



2.5.3 Slot 2



A Summary

A.1 Status

V&V Scientist	Jen Lauer
V&V Date (YYYY-MM-DD)	2012.06.04
V&V Edition	1
V&V Disposition and Status	OK
V&V Charge Time	15.078318

A.2 Comments