

V&V Reference Report

L2 ASCDS Version : 8.4.4

Observation 9282 - L2 Version 2
Chandra X-Ray Center

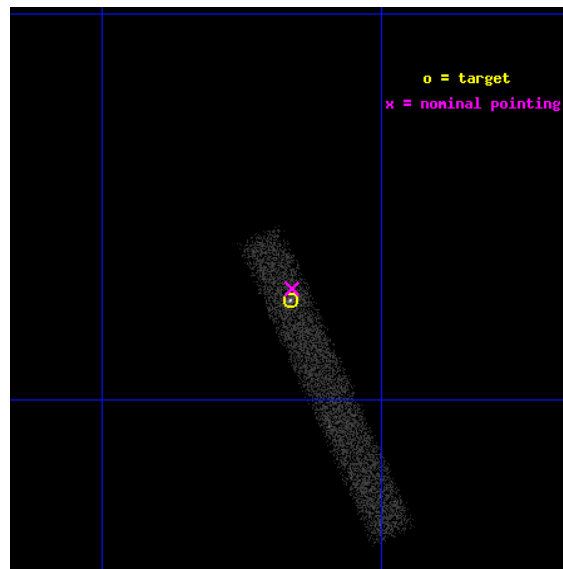
L2 Processing Date : May 10 2012

Contents

1	Front	2
2	OBI	3
2.1	OBI	3
2.1.1	Images	3
2.1.2	Bias	3
2.1.3	Parameters	4
2.1.4	Events	4
2.2	Compared Parameters	5
2.3	Aspect	6
2.4	Star Slots	9
2.4.1	Slot 3	9
2.4.2	Slot 4	10
2.4.3	Slot 5	11
2.4.4	Slot 6	12
2.4.5	Slot 7	13
2.5	FID Slots	14
2.5.1	Slot 0	14
2.5.2	Slot 1	15
2.5.3	Slot 2	16
A	Summary	17
A.1	Status	17
A.2	Comments	17

1 Front

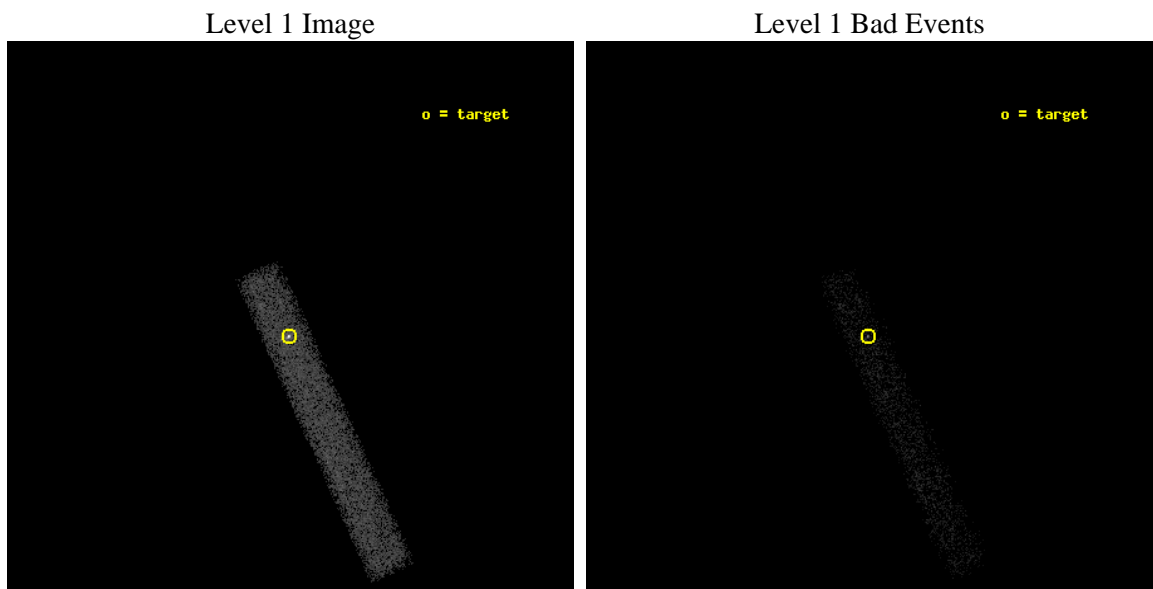
seq_num	701722	Sequence number
obs_id	9282	Observation id
title	Surveying X-ray Jets in Superluminal Blazars	Proposal title
observer	Dr. Matthew Lister	Principal investigator
object	1334-127	Source name
dtcycle	0	
cycle	P	events from which exps? Prim/Second/Both
ra_targ	204.415833	Observer's specified target RA [deg]
dec_targ	-12.956833	Observer's specified target Dec [deg]
ra_nom	204.41522809902	Nominal RA [deg]
dec_nom	-12.952005297057	Nominal Dec [deg]
roll_nom	65.550838416821	Nominal Roll [deg]
revision	2	Processing version of data
ontime	10788.399356961	Sum of GTIs [s]
livetime	9784.5087583541	Livetime [s]
ontime7	10788.399356961	Sum of GTIs [s]
l2events	12212	Number of level 2 events



2 OBI

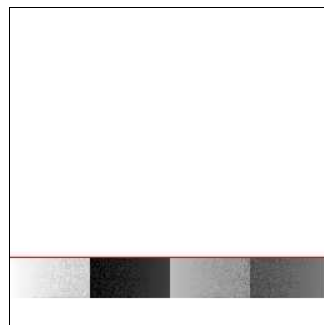
2.1 OBI

2.1.1 Images



2.1.2 Bias

Chip 7



2.1.3 Parameters

obi_num	0	Obi number	sched_exp_time	10600.000000	[s] Scheduled observation exposure time
ascdsver	8.4.4	Processing system revision	ontime	10788.399356961	Sum of GTIs [s]
caldsver	4.4.9	 	ontime7	10788.399356961	Sum of GTIs [s]
date	2012-05-10T22:56:12	Date and time of file creation	l1events	22346	Number of level 1 events
revision	2	Processing version of data			

2.1.4 Events

	ccd 7
level 1 events	22346
rejected events	9935
rejected %	44%

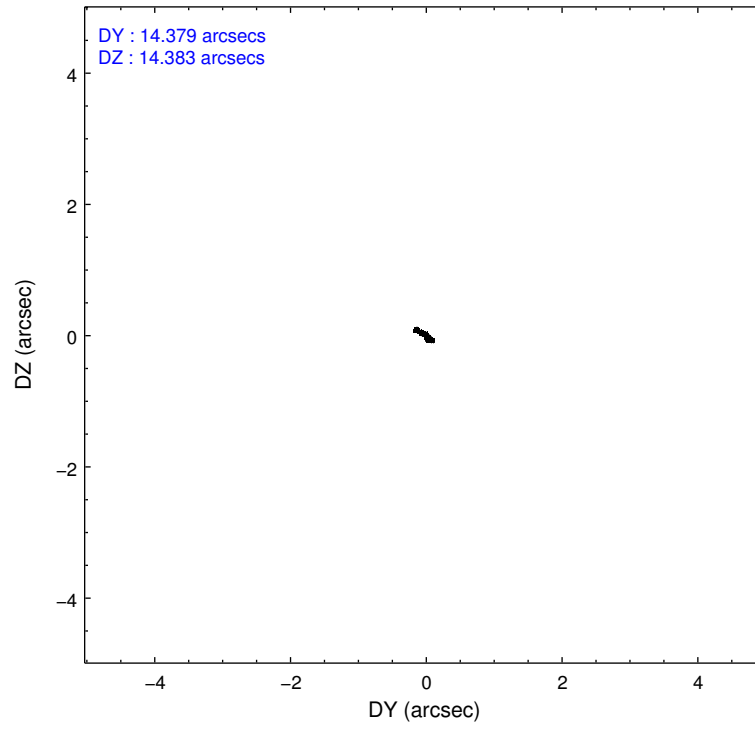
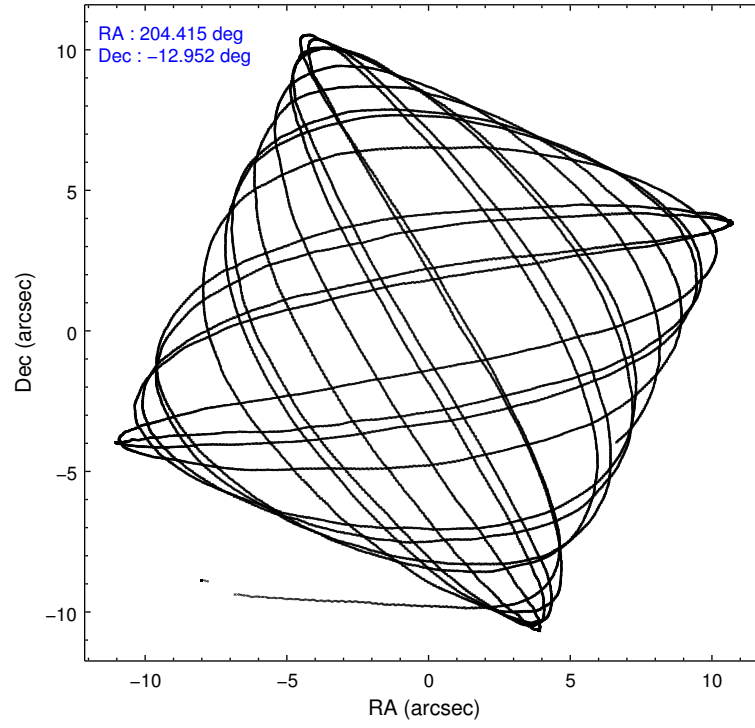
	ccd 7
grade 0 events	1861
	8%
grade 1 events	31
	0%
grade 2 events	2683
	12%
grade 3 events	1544
	6%
grade 4 events	1464
	6%
grade 5 events	1712
	7%
grade 6 events	5011
	22%
grade 7 events	8040
	35%

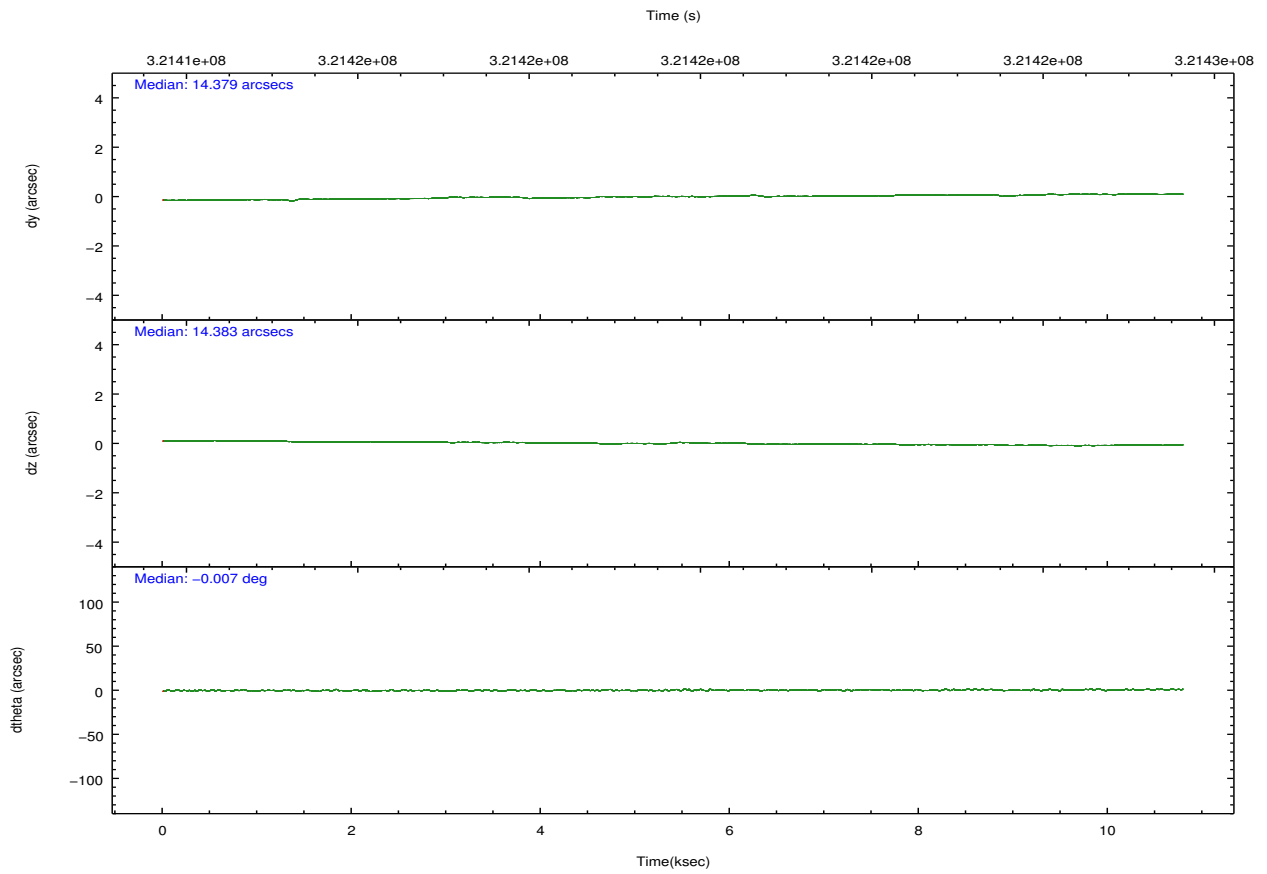
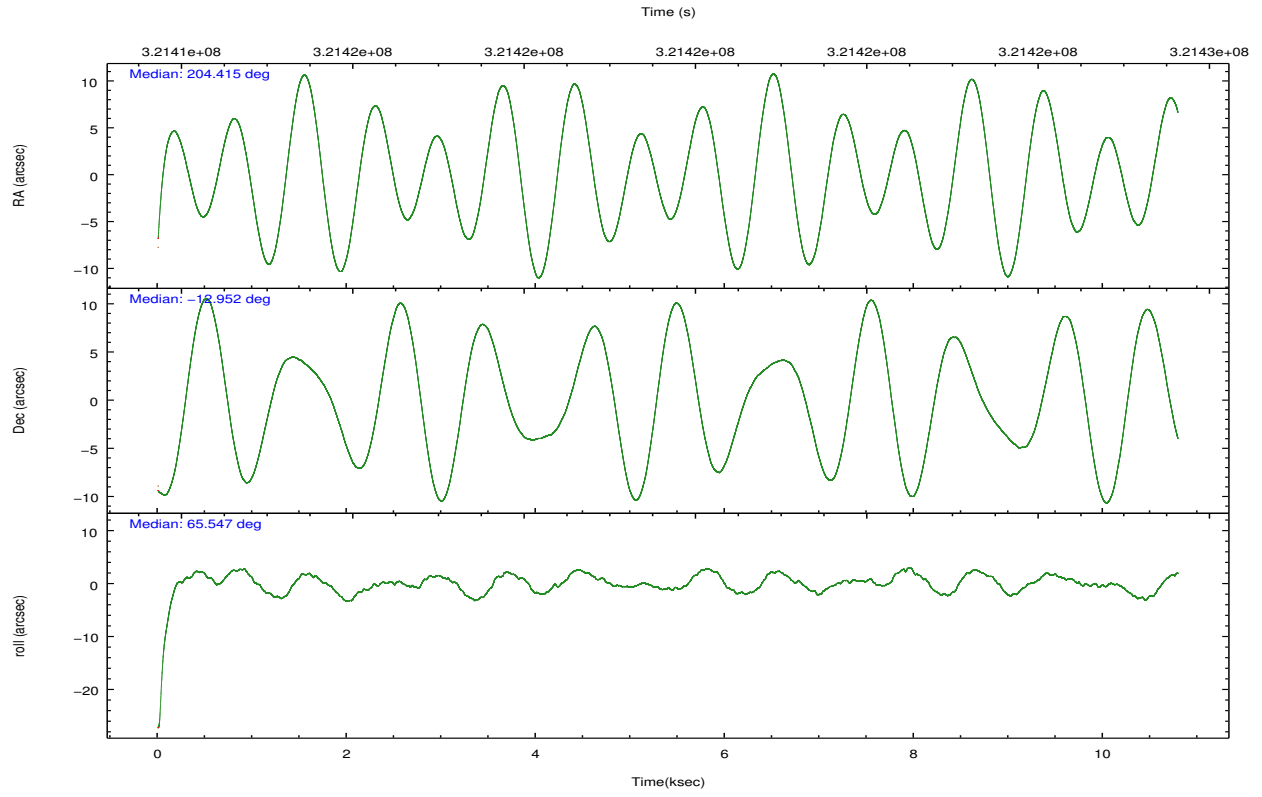
2.2 Compared Parameters

Parameter	Planned	Actual
Instrument	ACIS	ACIS
Detector	ACIS-7	ACIS-7
Grating	NONE	NONE
Data mode	VFAINT	VFAINT
Observation mode	POINTING	POINTING
[deg] Pointing RA	204.418298	204.4152280990191
[deg] Pointing Dec	-12.979201	-12.95200529705656
[deg] Pointing Roll	65.394914	65.55083841682068
[mm] SIM focus pos	-0.684267	-0.6828225247311905
[mm] SIM defocus	0	0.001444936568705701
[mm] SIM translation stage pos	-181.422523	-181.4355064758712
[mm] SIM translation stage offset	-8.710000000000001	-8.697016107136648
[s] Observation start time (MET)	321414472.184000	321413781.46318
Observation start date	2008-03-09T01:46:47	2008-03-09T01:36:21
[s] Observation end time (MET)	321425072.184000	321425915.41377
Observation end date	2008-03-09T04:43:27	2008-03-09T04:58:35
Read mode	TIMED	TIMED

Parameter	Planned	Actual
Obspar format version number	7	7
Obspar file type	PREDICTED	ACTUAL
Obspar update status	NONE	UPDATED
Number of optional ACIS chips dropped	0	0
On-chip summing requested	N	N
Subarray requested	CUSTOM	1/8
Subarray start row	100	100
Subarray row count	128	128
Alternating exposures requested	N	N
[s] Primary exposure time	0.000000	0.4

2.3 Aspect



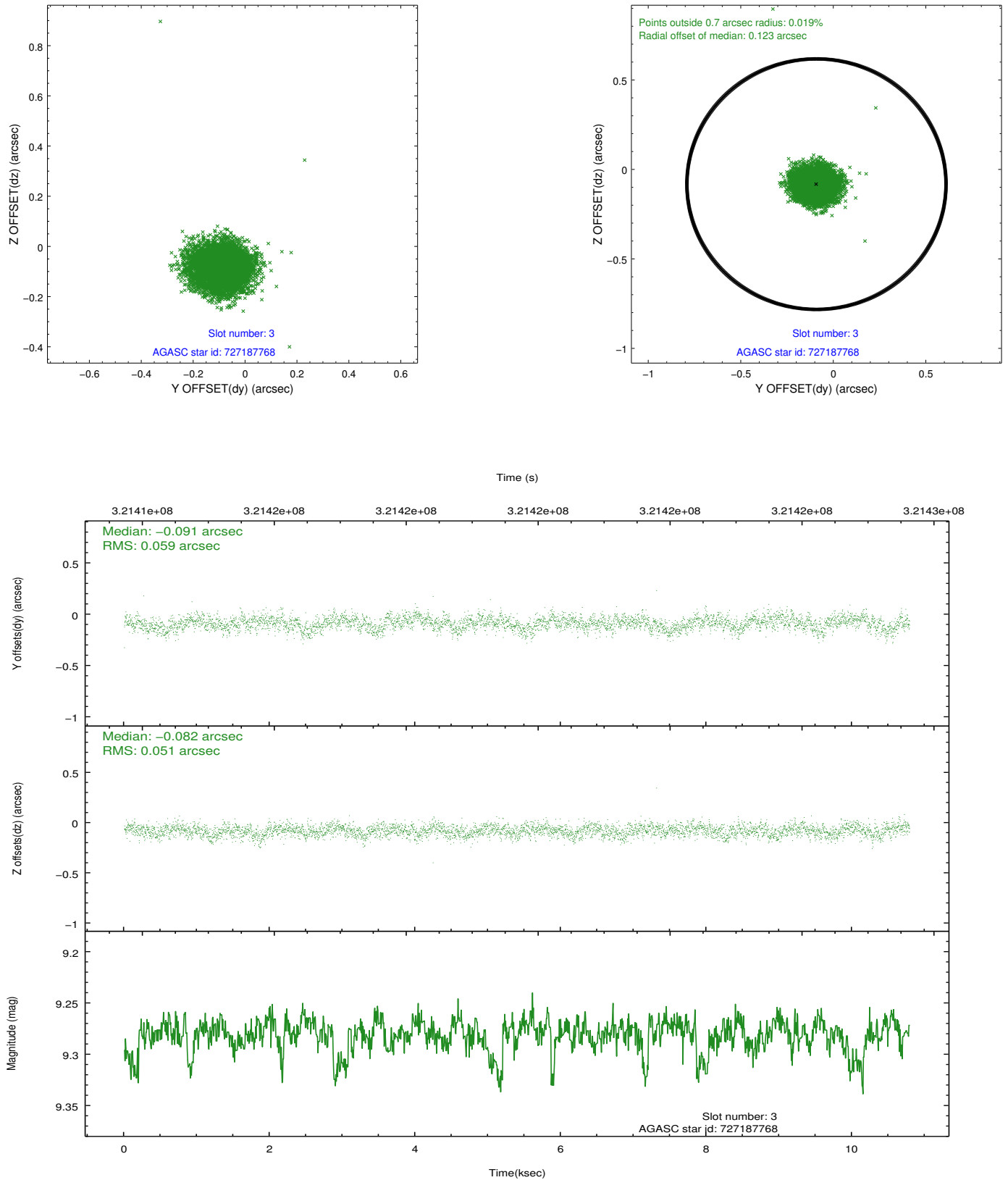


Slot Statistics

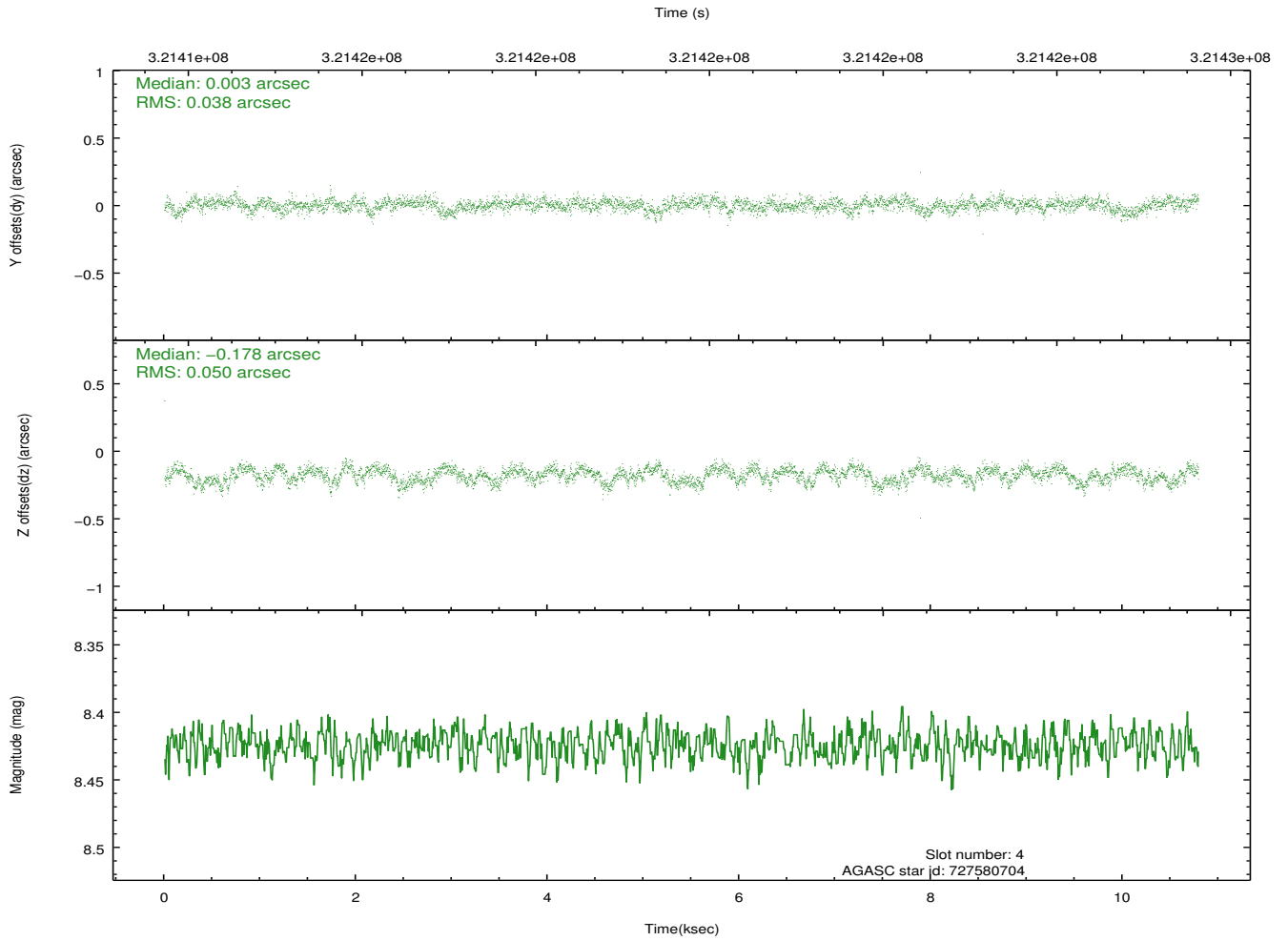
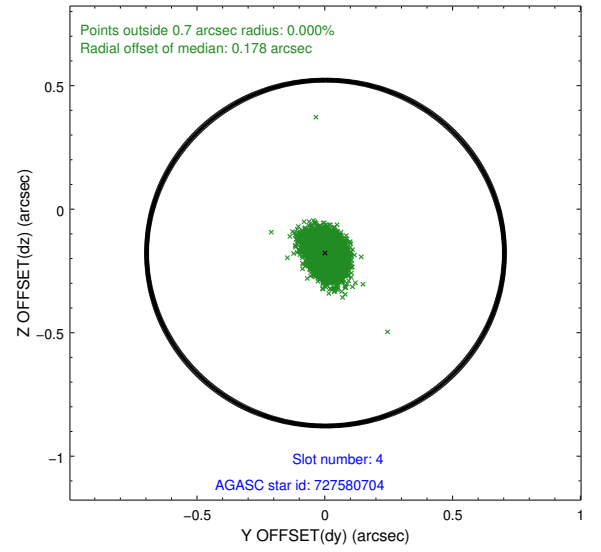
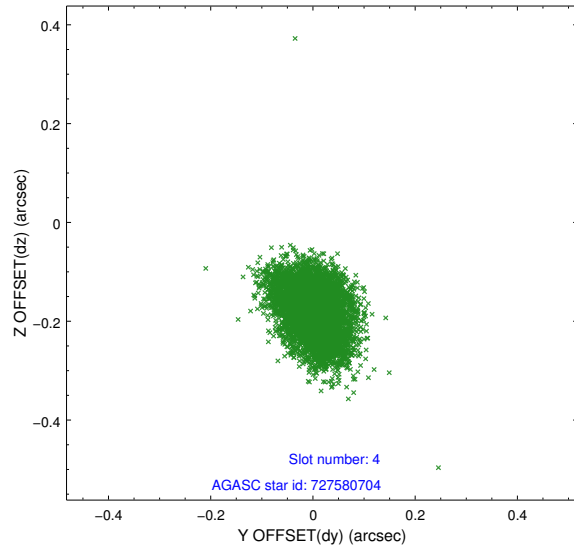
slot	status	id	mag	n_pts	med_dy	med_dz	dr1	dr2	ra	dec	mean_y	mean_z
0	FID	ACIS-S-1	7.18	2632	0.093	0.145	0.008	0.012	0.000000	0.000000	929.49	-1910.35
1	FID	ACIS-S-2	7.08	2632	-0.183	-0.106	0.008	0.013	0.000000	0.000000	-766.42	-1915.75
2	FID	ACIS-S-6	7.40	2630	0.071	-0.035	0.006	0.011	0.000000	0.000000	394.85	630.22
3	GUIDE	727187768	9.28	5257	-0.091	-0.082	0.081	0.132	204.093296	-12.172388	2163.24	2249.27
4	GUIDE	727580704	8.42	5264	0.003	-0.178	0.067	0.107	204.118384	-13.156740	-1019.05	690.01
5	GUIDE	727585096	7.86	5261	0.117	0.086	0.061	0.096	203.947701	-13.478524	-2321.84	749.25
6	GUIDE	727717456	8.21	5261	0.038	0.020	0.075	0.119	204.615692	-13.556055	-1601.06	-1492.53
7	GUIDE	727721256	9.21	5262	-0.063	0.159	0.106	0.170	205.057660	-12.918564	1129.87	-1949.59

2.4 Star Slots

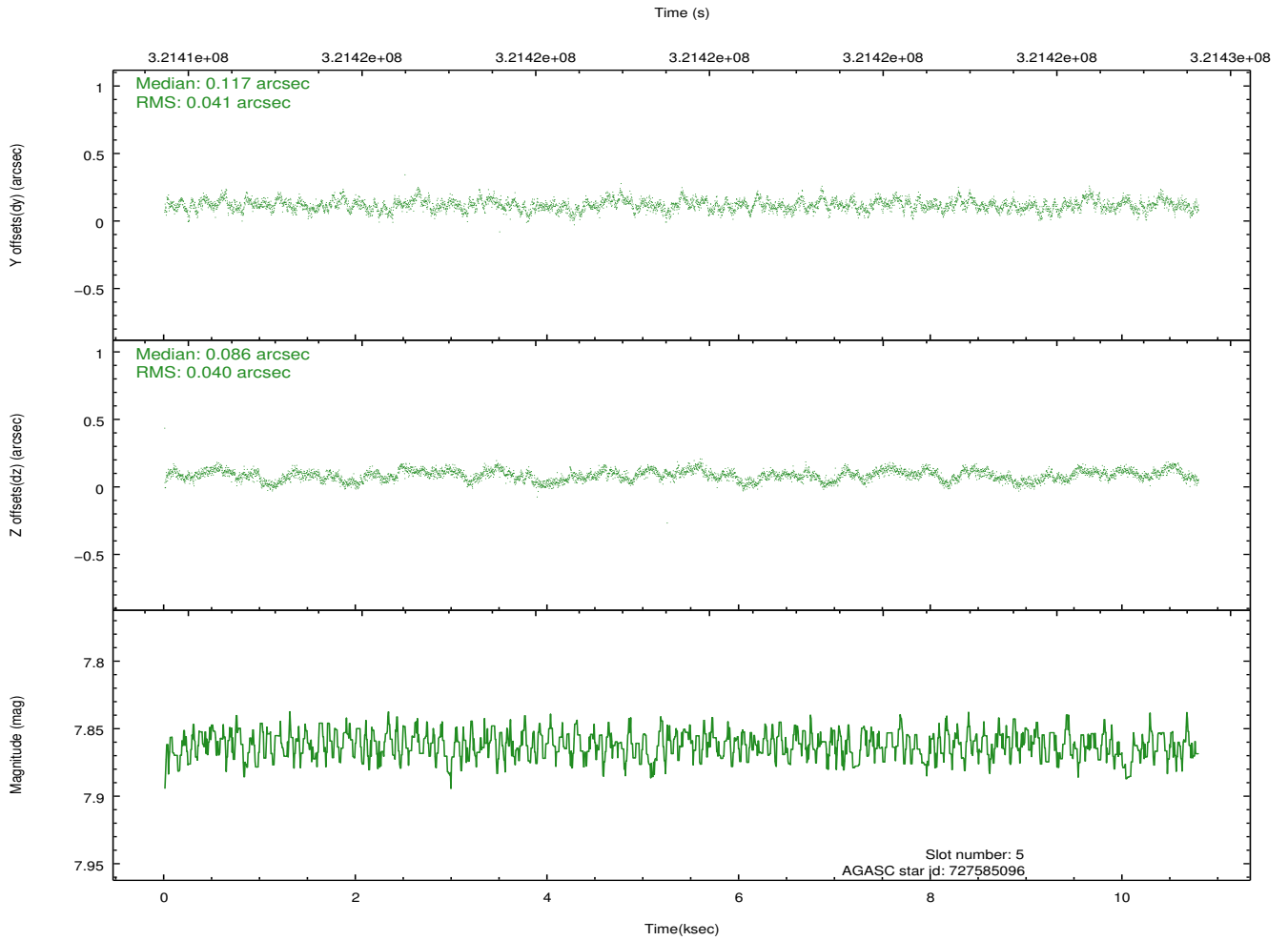
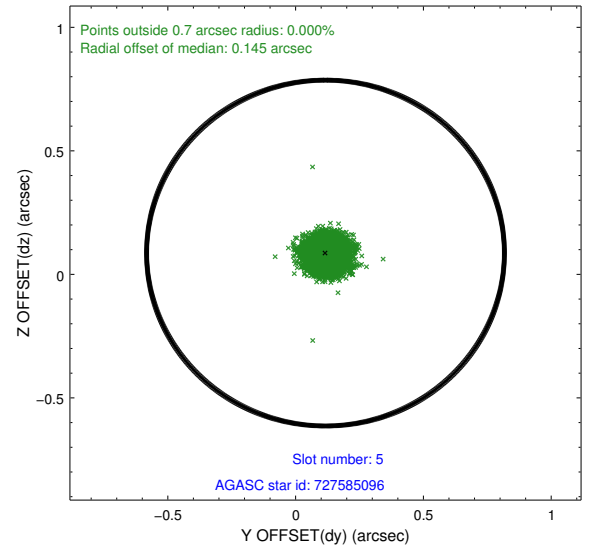
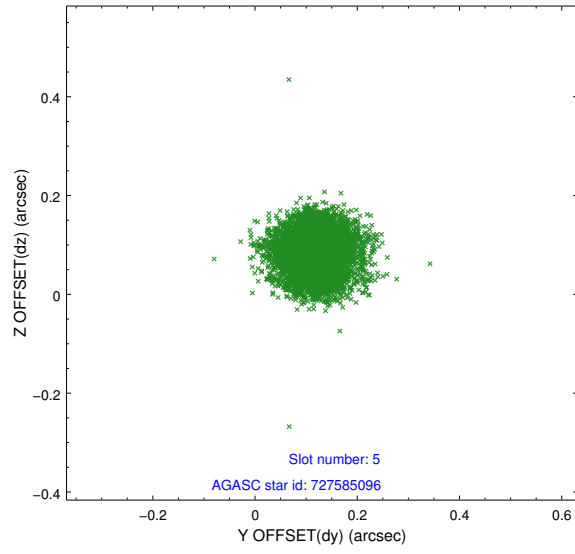
2.4.1 Slot 3



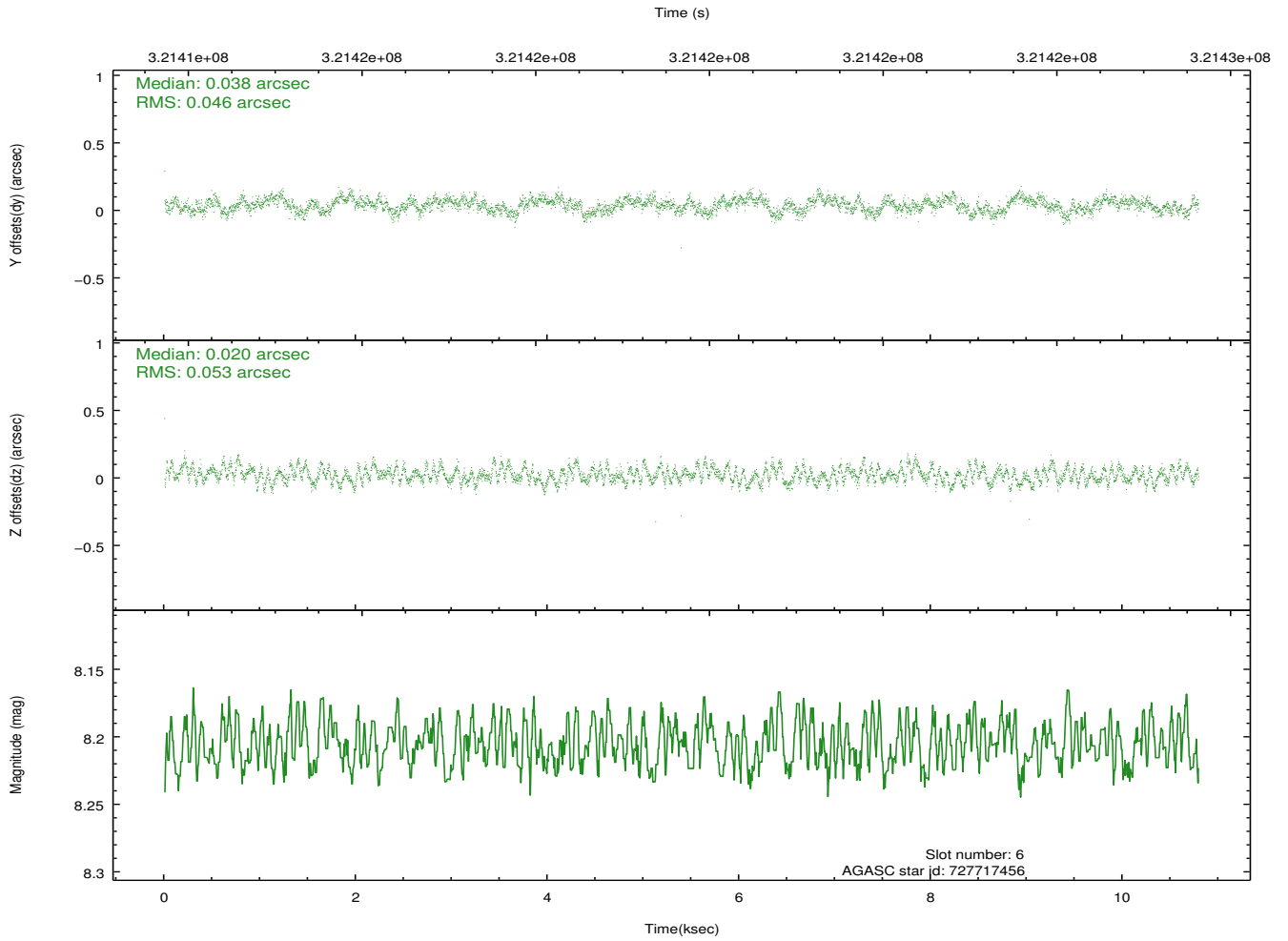
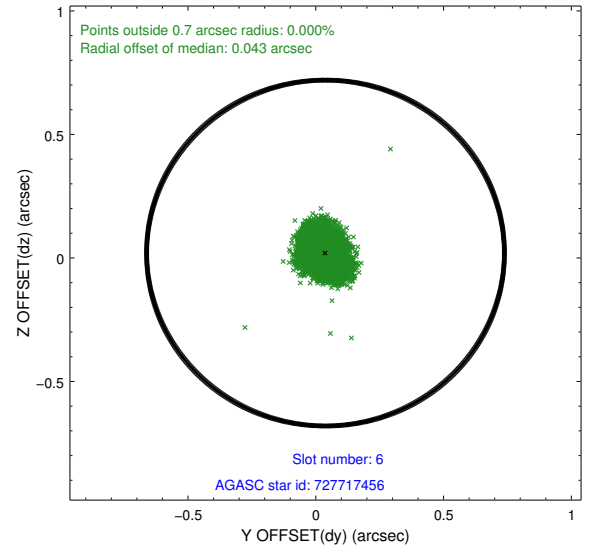
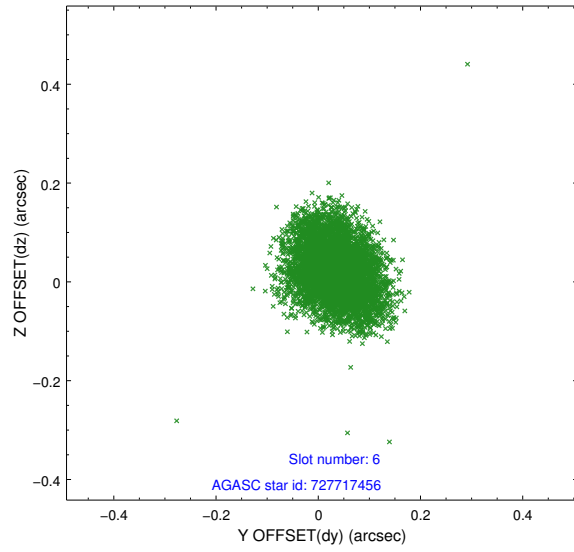
2.4.2 Slot 4



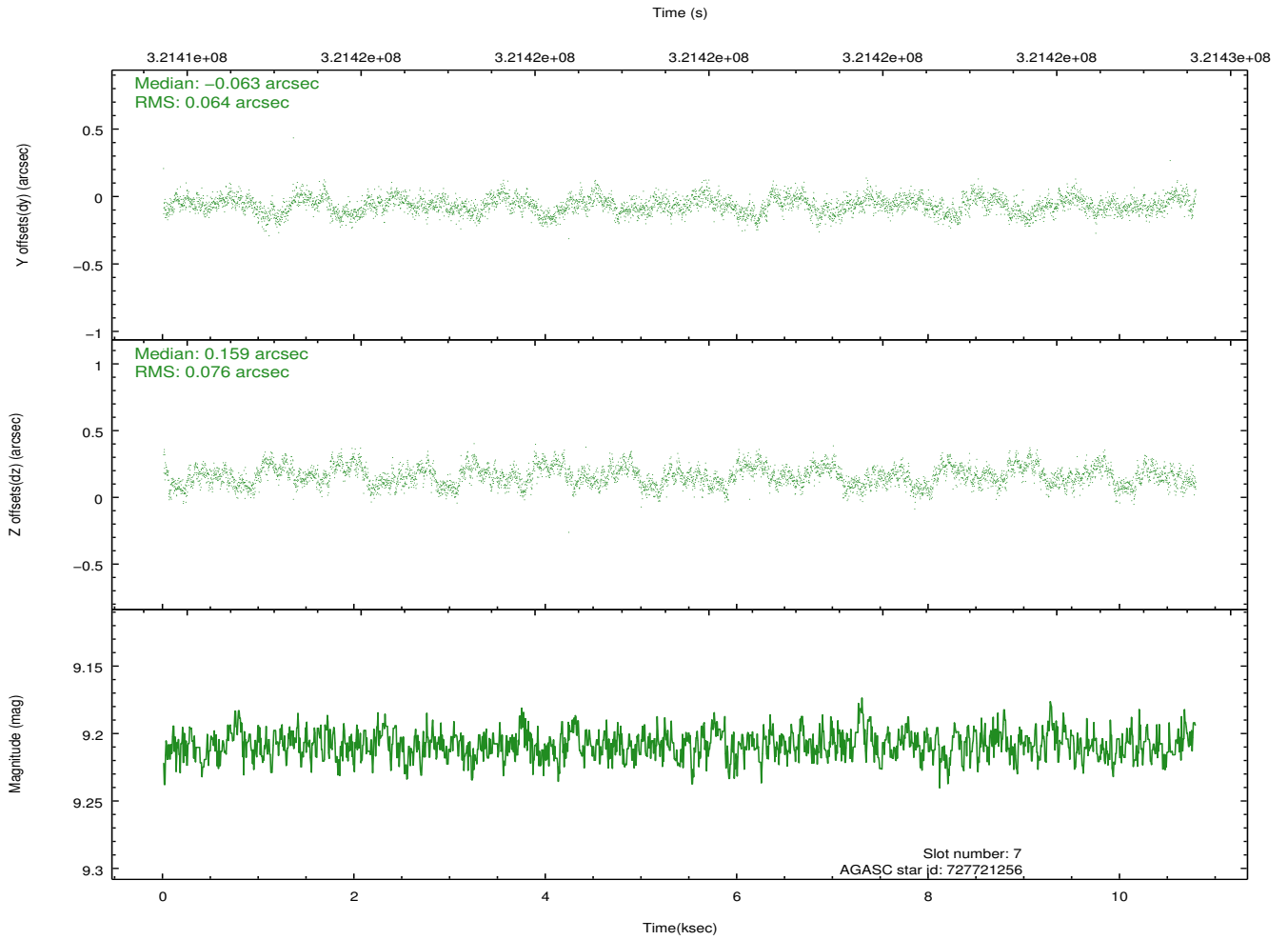
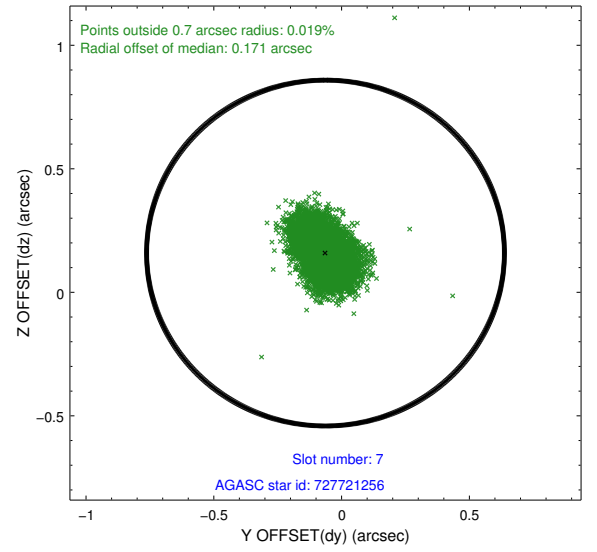
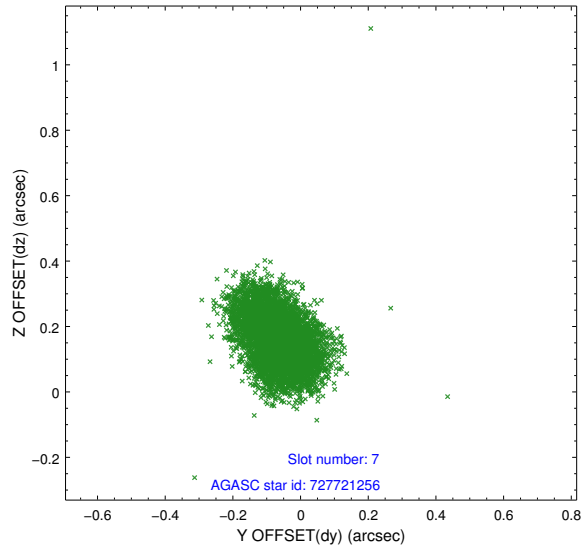
2.4.3 Slot 5



2.4.4 Slot 6

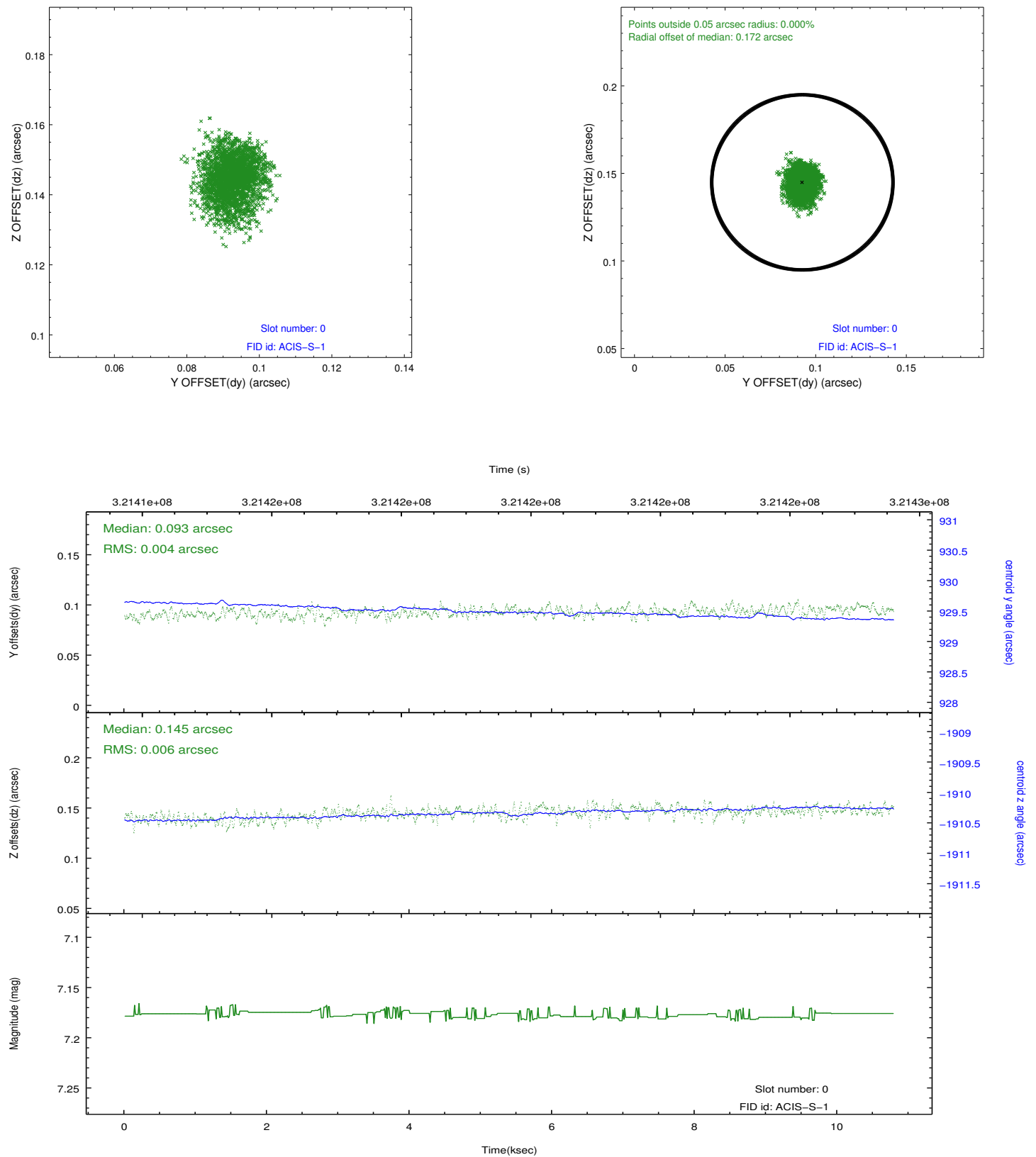


2.4.5 Slot 7

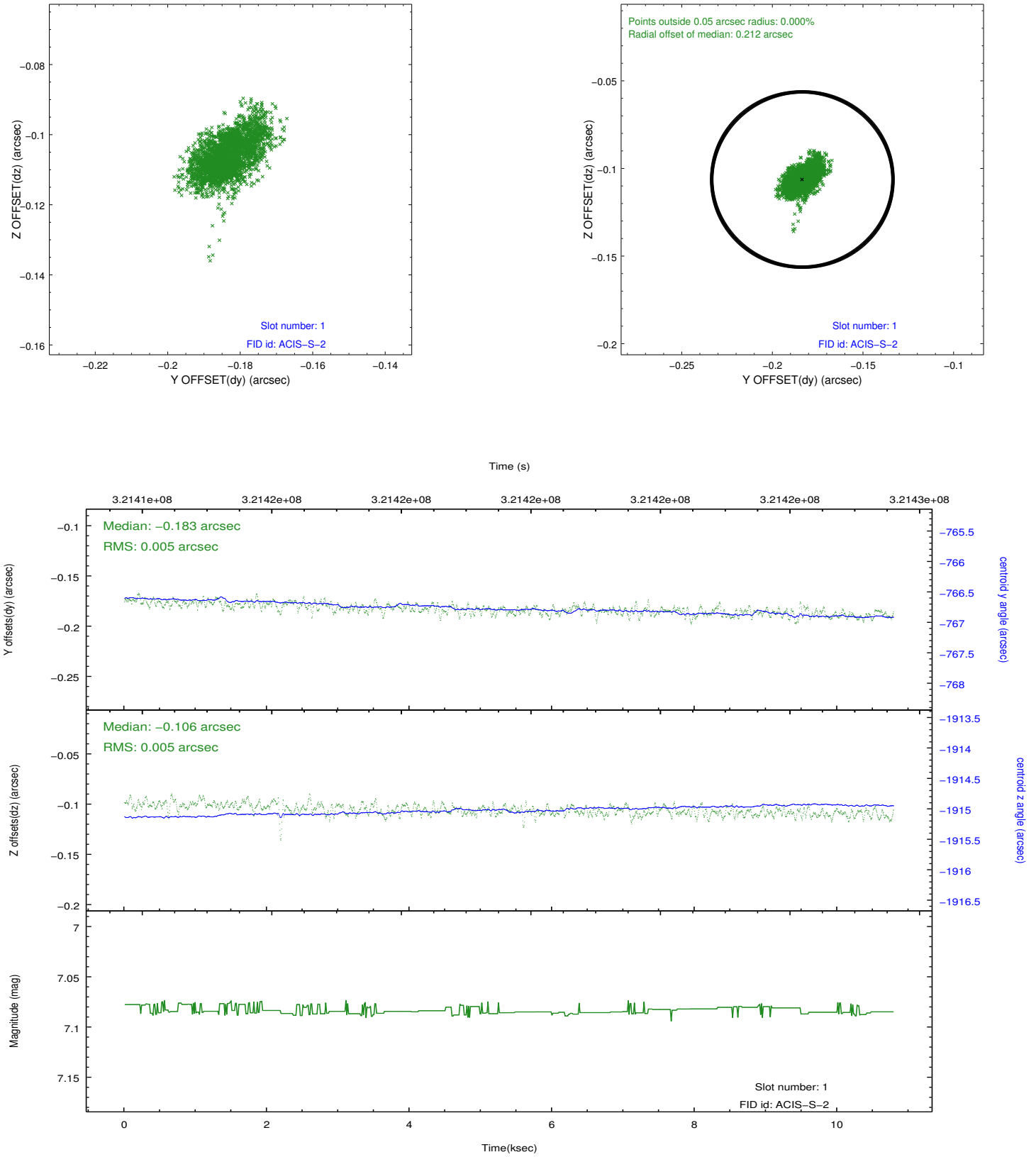


2.5 FID Slots

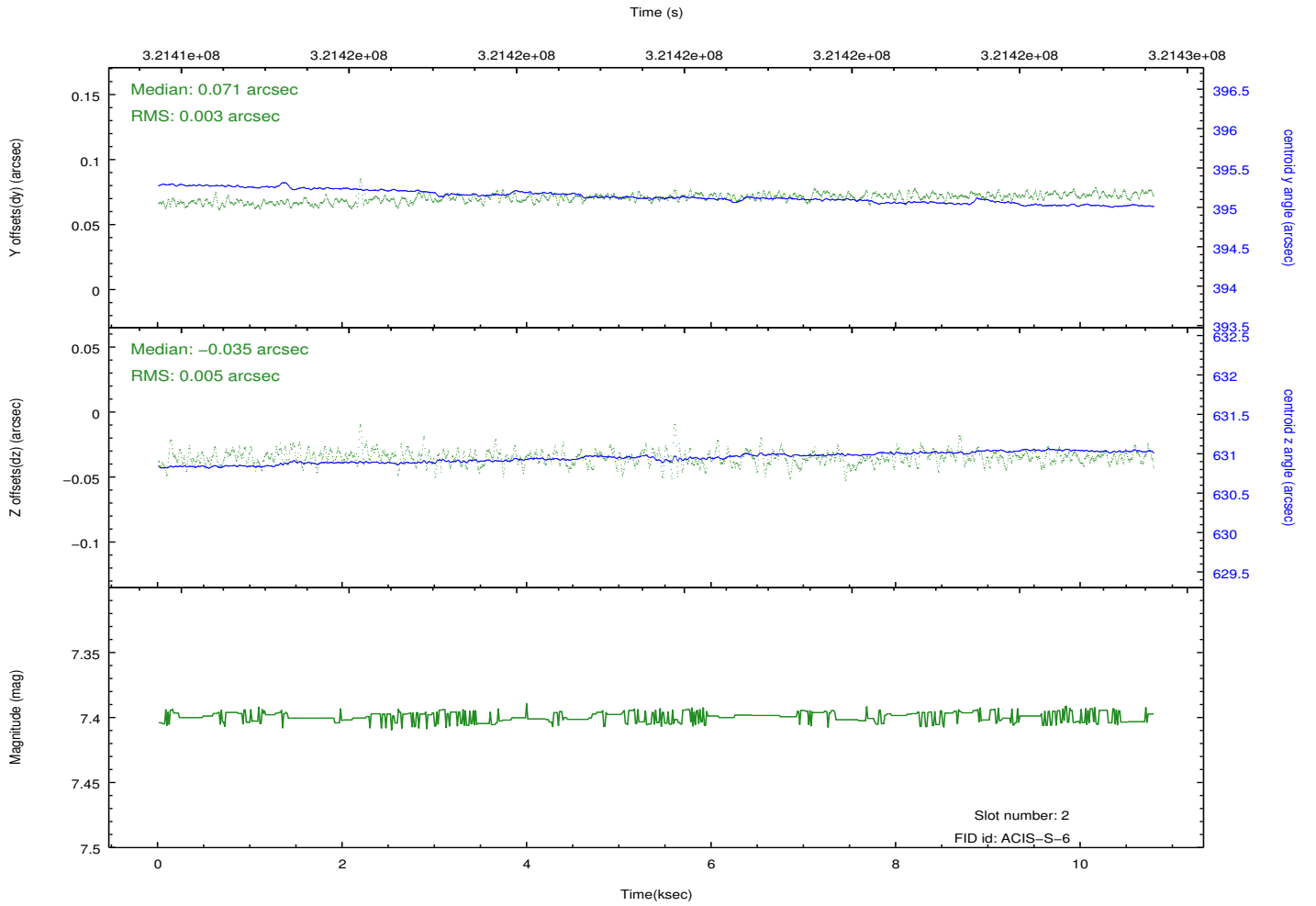
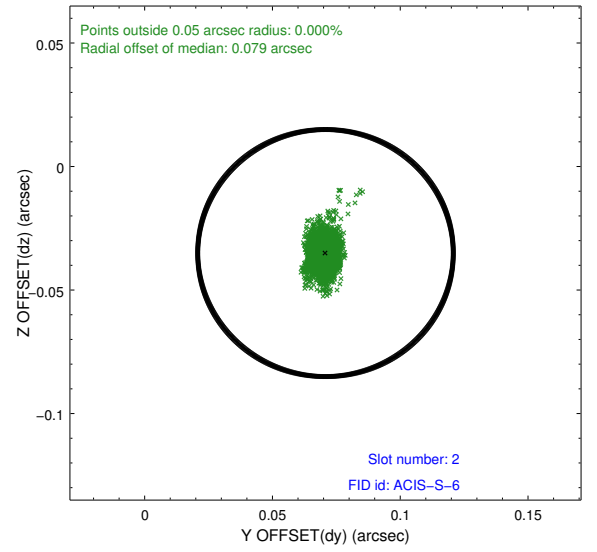
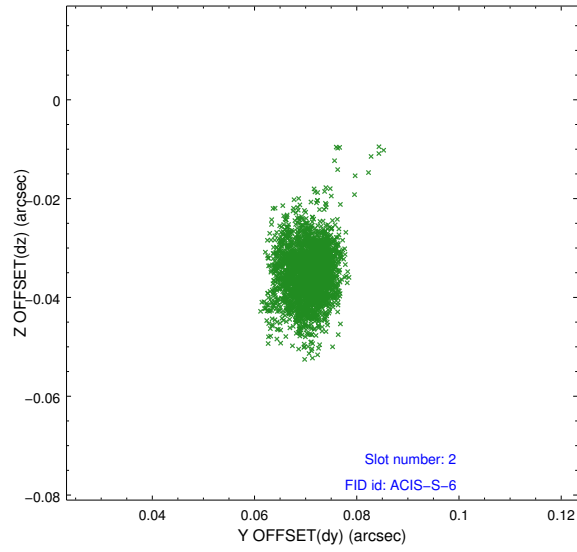
2.5.1 Slot 0



2.5.2 Slot 1



2.5.3 Slot 2



A Summary

A.1 Status

V&V Scientist	Jen Lauer
V&V Date (YYYY-MM-DD)	2012.05.14
V&V Edition	1
V&V Disposition and Status	OK
V&V Charge Time	10.7883993

A.2 Comments

Roll preference not met.