

V&V Reference Report

L2 ASCDS Version : 8.4.4

Observation 9052 - L2 Version 2
Chandra X-Ray Center

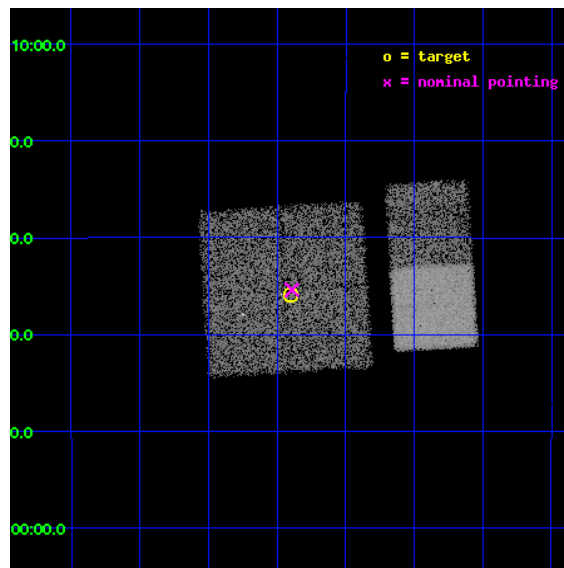
L2 Processing Date : May 9 2012

Contents

1	Front	2
2	OBI	3
2.1	OBI	3
2.1.1	Images	3
2.1.2	Bias	3
2.1.3	Parameters	4
2.1.4	Events	4
2.2	Compared Parameters	5
2.3	Aspect	6
2.4	Star Slots	9
2.4.1	Slot 3	9
2.4.2	Slot 4	10
2.4.3	Slot 5	11
2.4.4	Slot 6	12
2.4.5	Slot 7	13
2.5	FID Slots	14
2.5.1	Slot 0	14
2.5.2	Slot 1	15
2.5.3	Slot 2	16
A	Summary	17
A.1	Status	17
A.2	Comments	17

1 Front

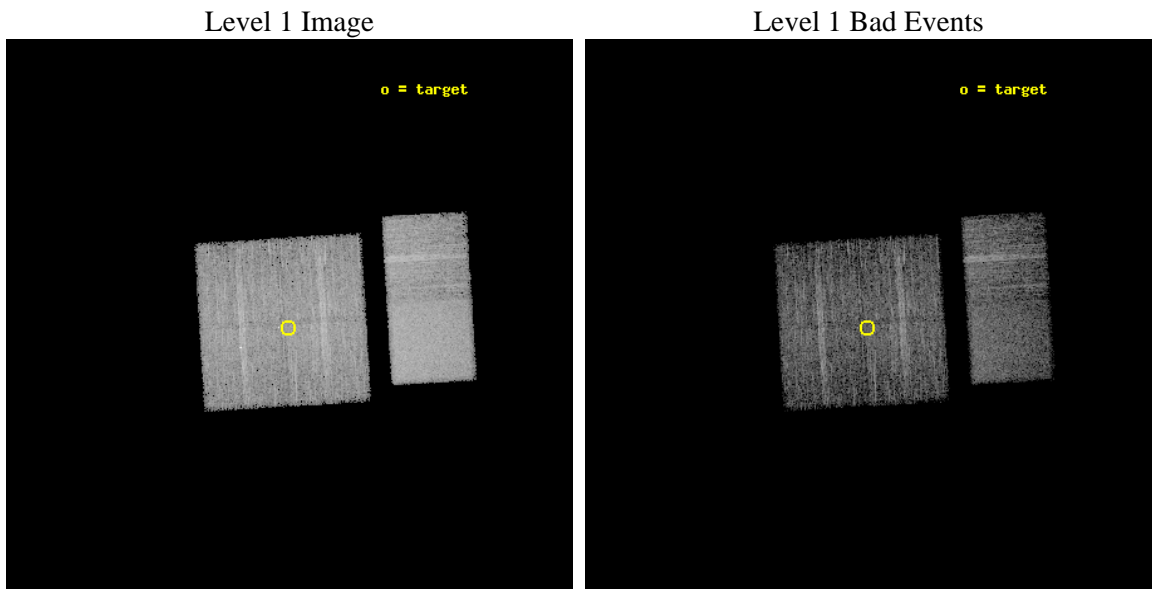
seq_num	400903	Sequence number
obs_id	9052	Observation id
title	Localization and Spectra of INTEGRAL-Selected Sources in the Galactic Plane	Proposal title
observer	Dr. John Tomsick	Principal investigator
object	IGR J18134-1636	Source name
dtcycle	0	
cycle	P	events from which exps? Prim/Second/Both
ra_targ	273.35	Observer's specified target RA [deg]
dec_targ	-16.598056	Observer's specified target Dec [deg]
ra_nom	273.34799296562	Nominal RA [deg]
dec_nom	-16.59000179781	Nominal Dec [deg]
roll_nom	86.540723503225	Nominal Roll [deg]
revision	2	Processing version of data
ontime	4953.4922806621	Sum of GTIs [s]
livetime	4890.7681787694	Livetime [s]
ontime0	4953.3691606522	Sum of GTIs [s]
ontime1	4953.4102006555	Sum of GTIs [s]
ontime2	4953.4512406588	Sum of GTIs [s]
ontime3	4953.4922806621	Sum of GTIs [s]
ontime6	4953.5743606687	Sum of GTIs [s]
ontime7	4953.5333206654	Sum of GTIs [s]
l2events	55005	Number of level 2 events



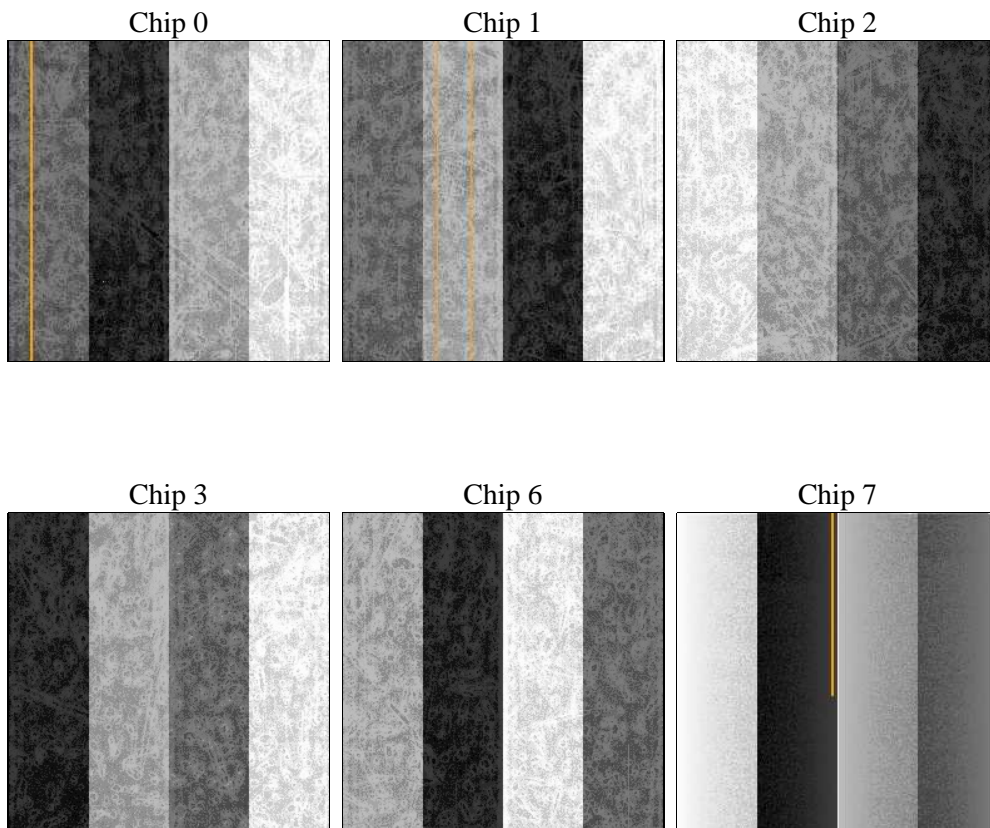
2 OBI

2.1 OBI

2.1.1 Images



2.1.2 Bias



2.1.3 Parameters

obi_num	1	Obi number	sched_exp_time	5000.000000	[s] Scheduled observation exposure time
ascdsver	8.4.4	Processing system revision	ontime	4953.4922806621	Sum of GTIs [s]
caldsver	4.4.9	 	ontime0	4953.3691606522	Sum of GTIs [s]
date	2012-05-09T18:38:33	Date and time of file creation	ontime1	4953.4102006555	Sum of GTIs [s]
revision	2	Processing version of data	ontime2	4953.4512406588	Sum of GTIs [s]
			ontime3	4953.4922806621	Sum of GTIs [s]
			ontime6	4953.5743606687	Sum of GTIs [s]
			ontime7	4953.5333206654	Sum of GTIs [s]
			l1events	293699	Number of level 1 events

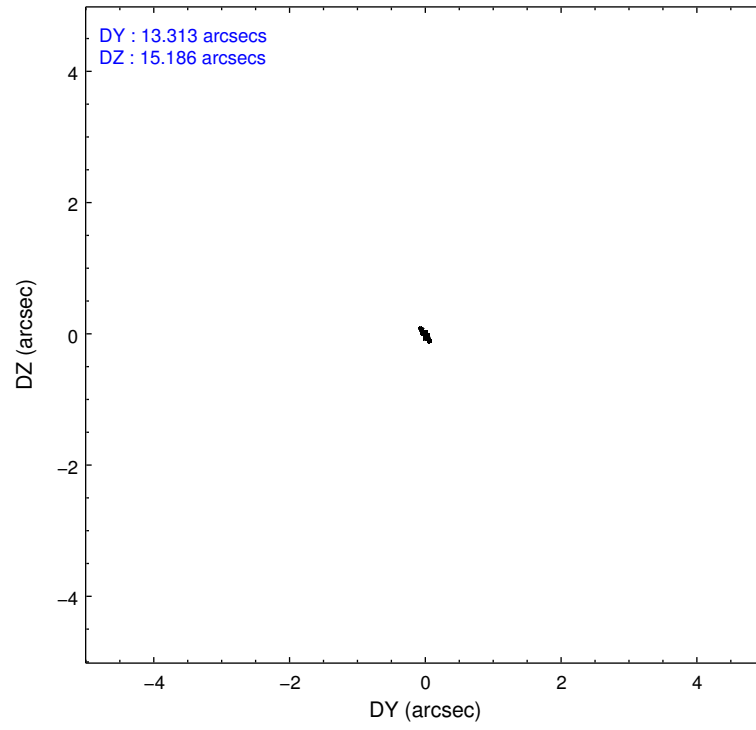
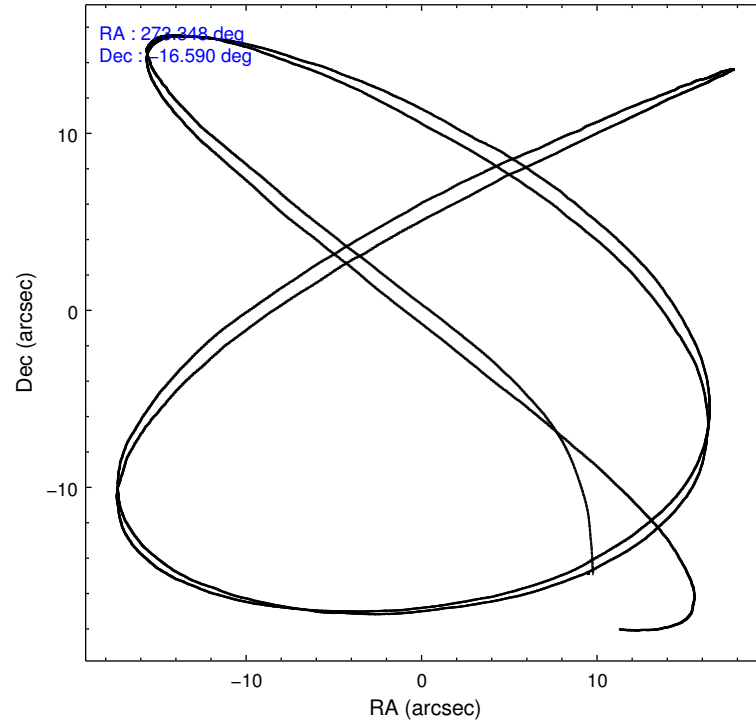
2.1.4 Events

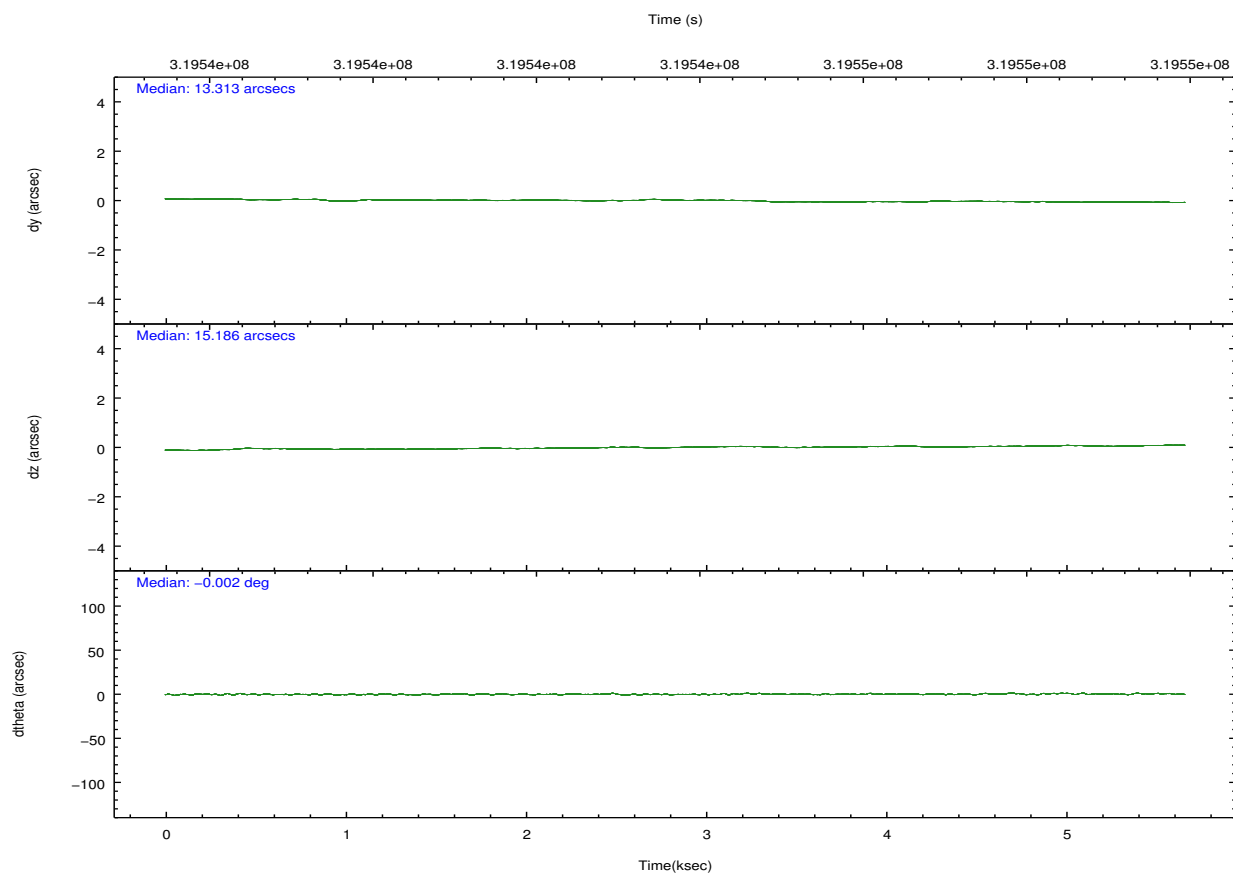
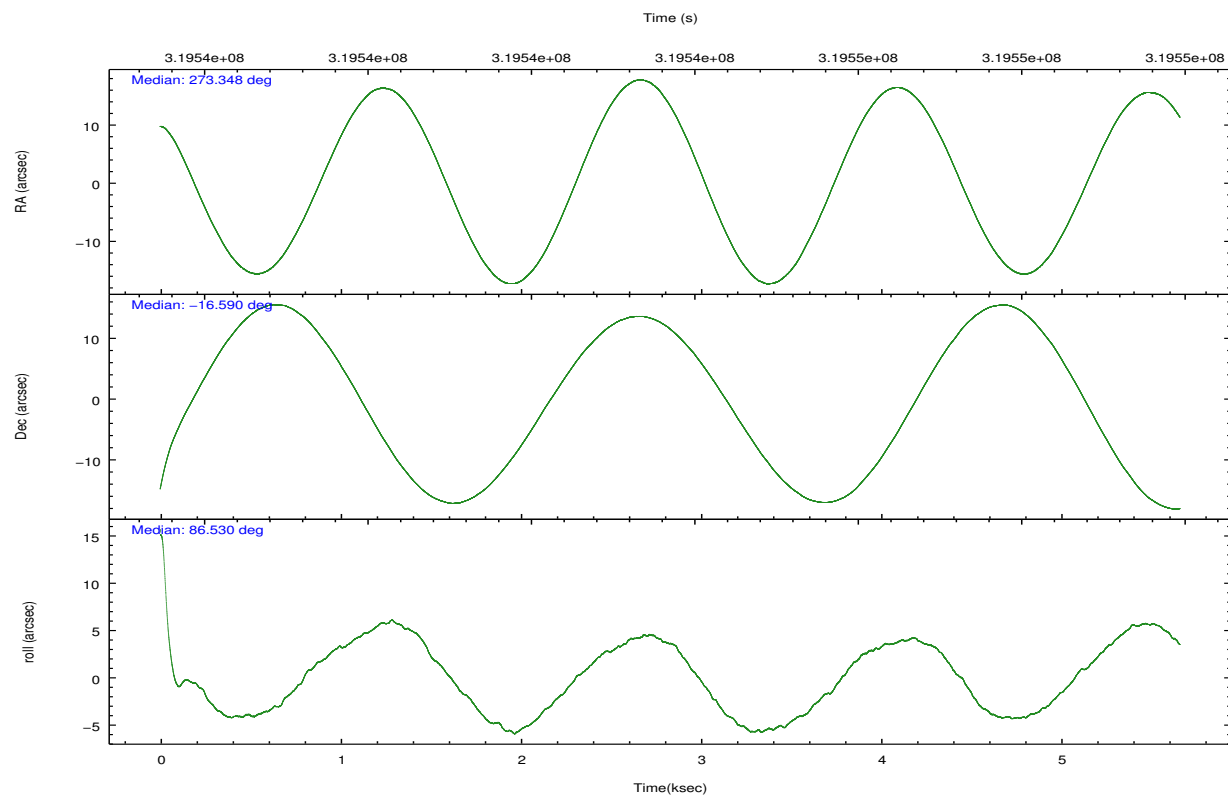
	ccd 0	ccd 1	ccd 2	ccd 3	ccd 6	ccd 7		ccd 0	ccd 1	ccd 2	ccd 3	ccd 6	ccd 7
level 1 events	43763	43286	46789	46032	48324	65505	grade 0 events	3021	3340	2975	2821	2509	2471
rejected events	37319	35898	40586	39966	42172	37881		6%	7%	6%	6%	5%	3%
rejected %	85%	82%	86%	86%	87%	57%	grade 1 events	25	32	35	43	23	65
								0%	0%	0%	0%	0%	0%
							grade 2 events	1323	1623	1260	1145	1303	5664
								3%	3%	2%	2%	2%	8%
							grade 3 events	556	617	535	504	575	2298
								1%	1%	1%	1%	1%	3%
							grade 4 events	535	579	530	573	519	2340
								1%	1%	1%	1%	1%	3%
							grade 5 events	1913	2016	1854	2209	2246	6233
								4%	4%	3%	4%	4%	9%
							grade 6 events	1017	1241	912	1032	1256	14884
								2%	2%	1%	2%	2%	22%
							grade 7 events	35373	33838	38688	37705	39893	31550
								80%	78%	82%	81%	82%	48%

2.2 Compared Parameters

Parameter	Planned	Actual	Parameter	Planned	Actual
Instrument	ACIS	ACIS	Obspar format version number	7	7
Detector	ACIS-012367	ACIS-012367	Obspar file type	PREDICTED	ACTUAL
Grating	NONE	NONE	Obspar update status	NONE	UPDATED
Data mode	FAINT	FAINT	CCD I0 on	Y	Y
Observation mode	POINTING	POINTING	CCD I1 on	Y	Y
[deg] Pointing RA	273.360903	273.3479929656158	CCD I2 on	Y	Y
[deg] Pointing Dec	-16.614760	-16.59000179781011	CCD I3 on	Y	Y
[deg] Pointing Roll	86.335702	86.54072350322453	CCD S0 on	N	N
[mm] SIM focus pos	-0.782348	-0.7809083437167272	CCD S1 on	N	N
[mm] SIM defocus	0	0.001439871863259334	CCD S2 on	O1	Y
[mm] SIM translation stage pos	-233.592463	-233.5874344608287	CCD S3 on	O2	Y
[mm] SIM translation stage offset	0	-0.005018542100998502	CCD S4 on	N	N
[s] Observation start time (MET)	319542672.184000	319541472.29725	CCD S5 on	N	N
Observation start date	2008-02-16T09:50:07	2008-02-16T09:31:12	Number of optional ACIS chips dropped	0	0
[s] Observation end time (MET)	319547672.184000	319548612.44759	On-chip summing requested	N	N
Observation end date	2008-02-16T11:13:27	2008-02-16T11:30:12	Subarray requested	NONE	NONE
Read mode	TIMED	TIMED	Alternating exposures requested	N	N
			[s] Primary exposure time	0.000000	3.2

2.3 Aspect



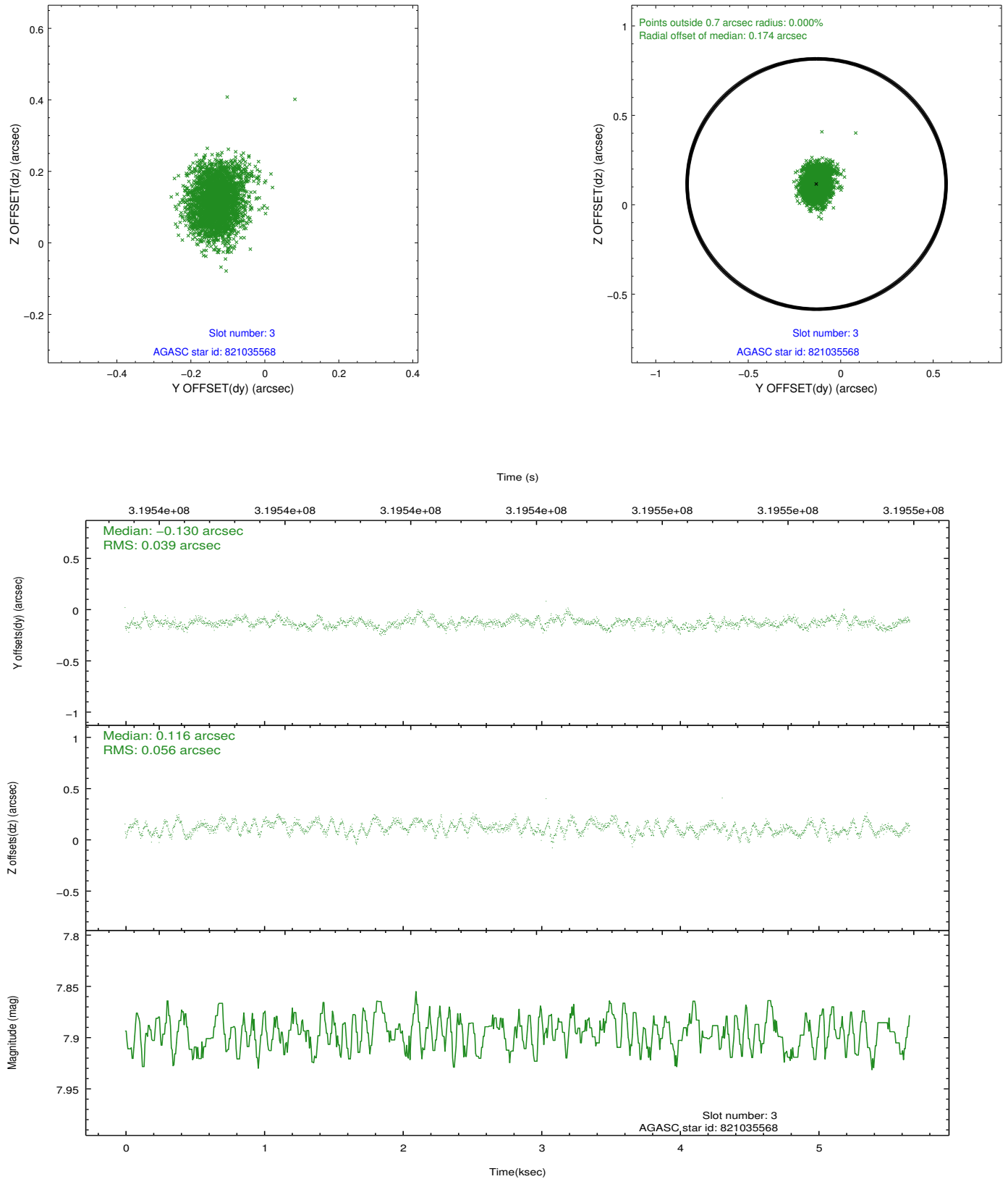


Slot Statistics

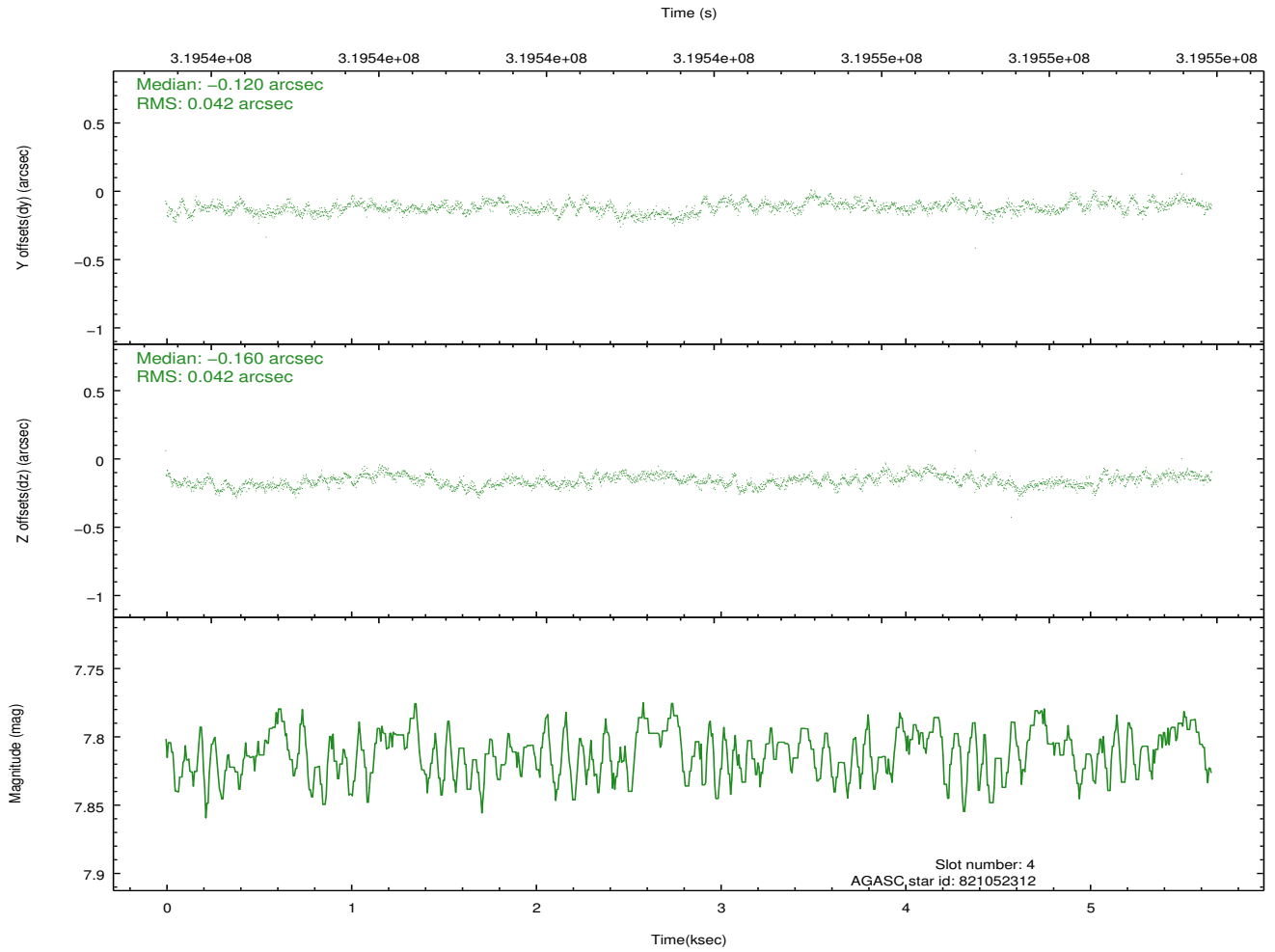
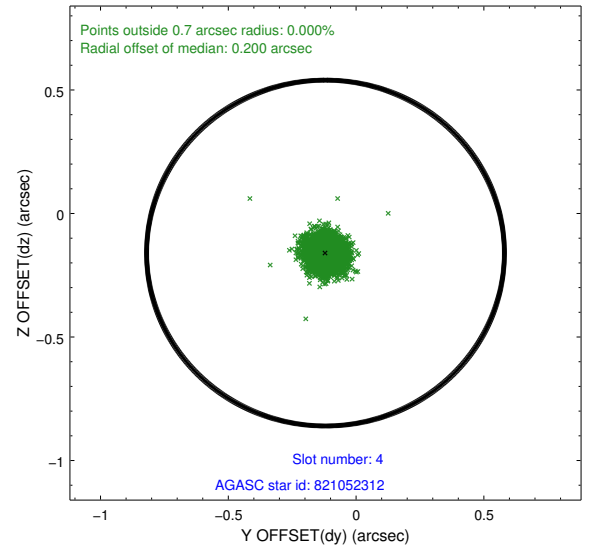
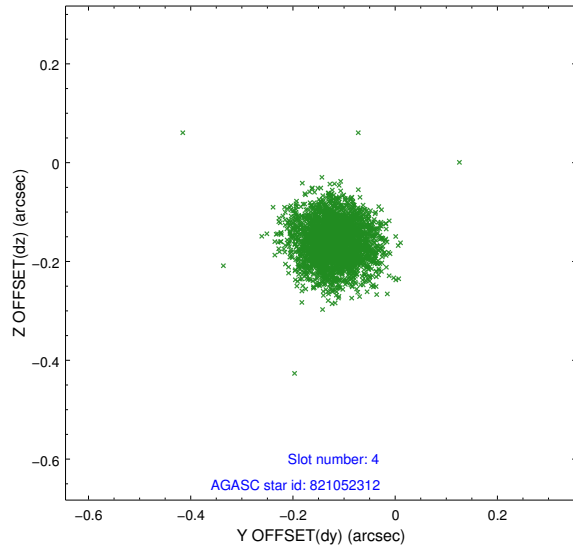
slot	status	id	mag	n_pts	med_dy	med_dz	dr1	dr2	ra	dec	mean_y	mean_z
0	FID	ACIS-I-1	7.22	1381	0.033	-0.014	0.016	0.025	0.000000	0.000000	926.23	-838.80
1	FID	ACIS-I-5	7.21	1381	-0.190	0.042	0.011	0.017	0.000000	0.000000	-1821.51	1058.23
2	FID	ACIS-I-6	7.23	1380	0.066	0.045	0.011	0.017	0.000000	0.000000	390.67	1703.92
3	GUIDE	821035568	7.90	2763	-0.130	0.116	0.072	0.115	273.834124	-16.831485	-676.80	-1677.05
4	GUIDE	821052312	7.81	2763	-0.120	-0.160	0.063	0.099	273.114947	-16.380684	784.99	901.20
5	GUIDE	821570120	8.95	2760	-0.060	-0.221	0.081	0.132	272.788770	-16.965828	-1390.80	1885.17
6	GUIDE	821571896	8.72	2761	0.231	0.615	0.080	0.143	273.937187	-16.971080	-1156.75	-2061.09
7	GUIDE	821035544	8.17	2761	0.077	-0.358	0.072	0.118	272.657785	-16.824528	-914.18	2368.38

2.4 Star Slots

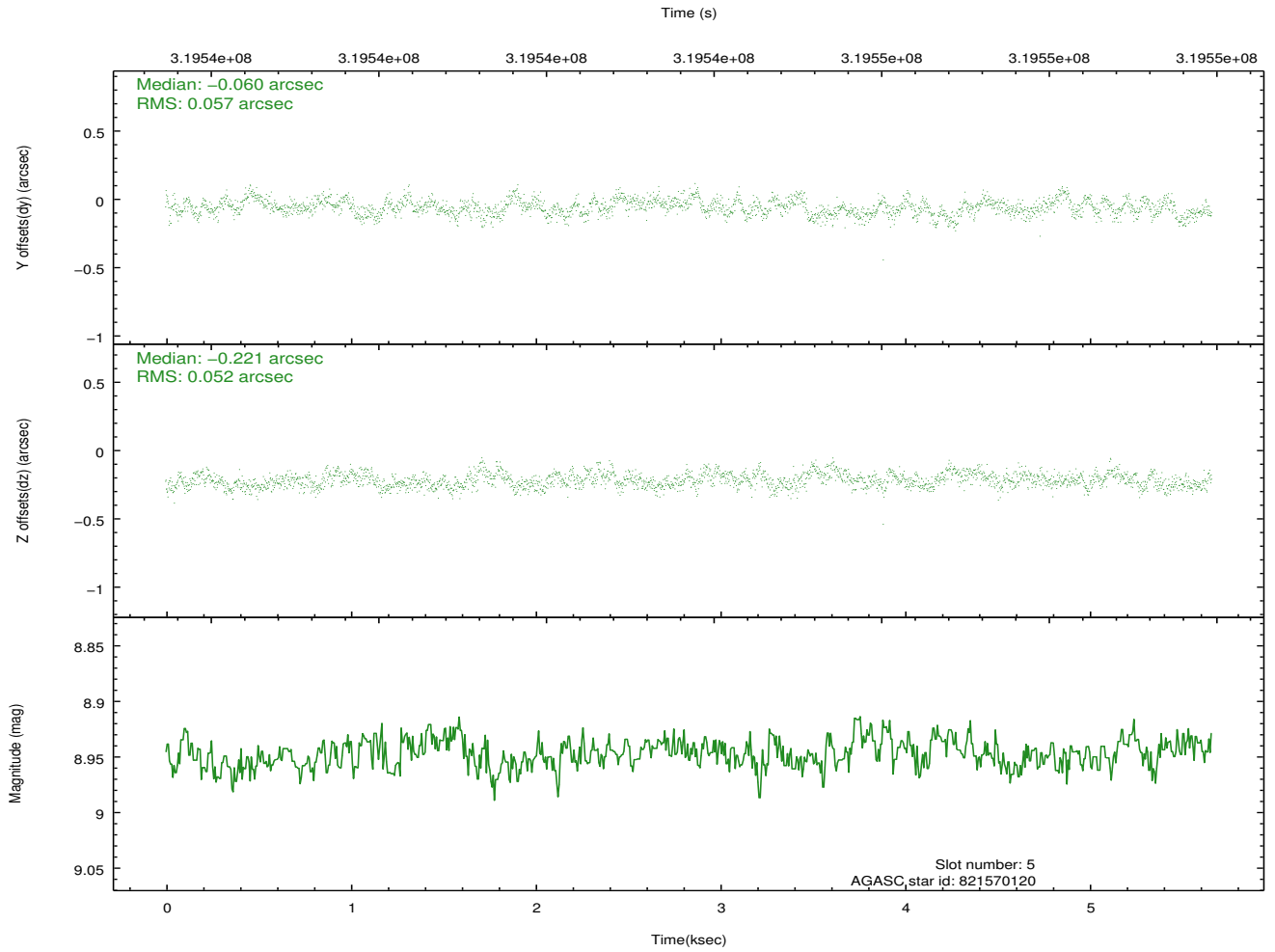
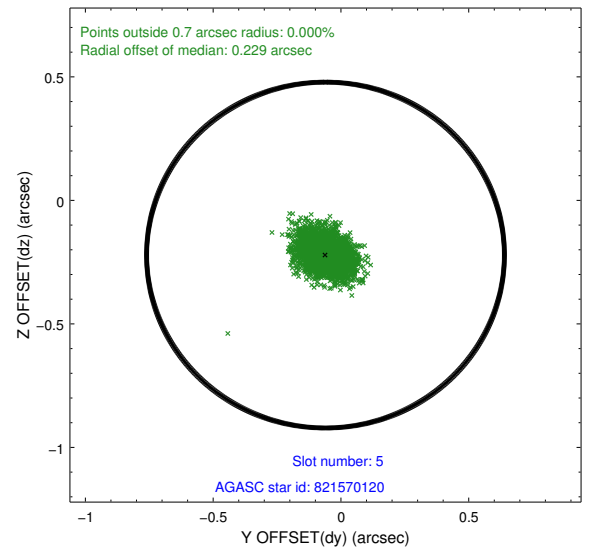
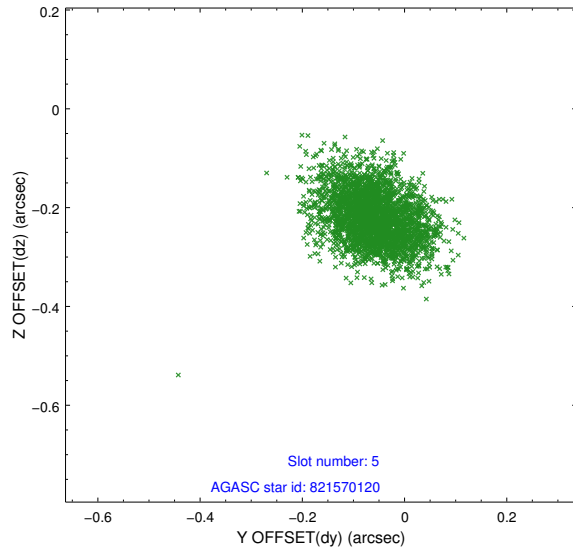
2.4.1 Slot 3



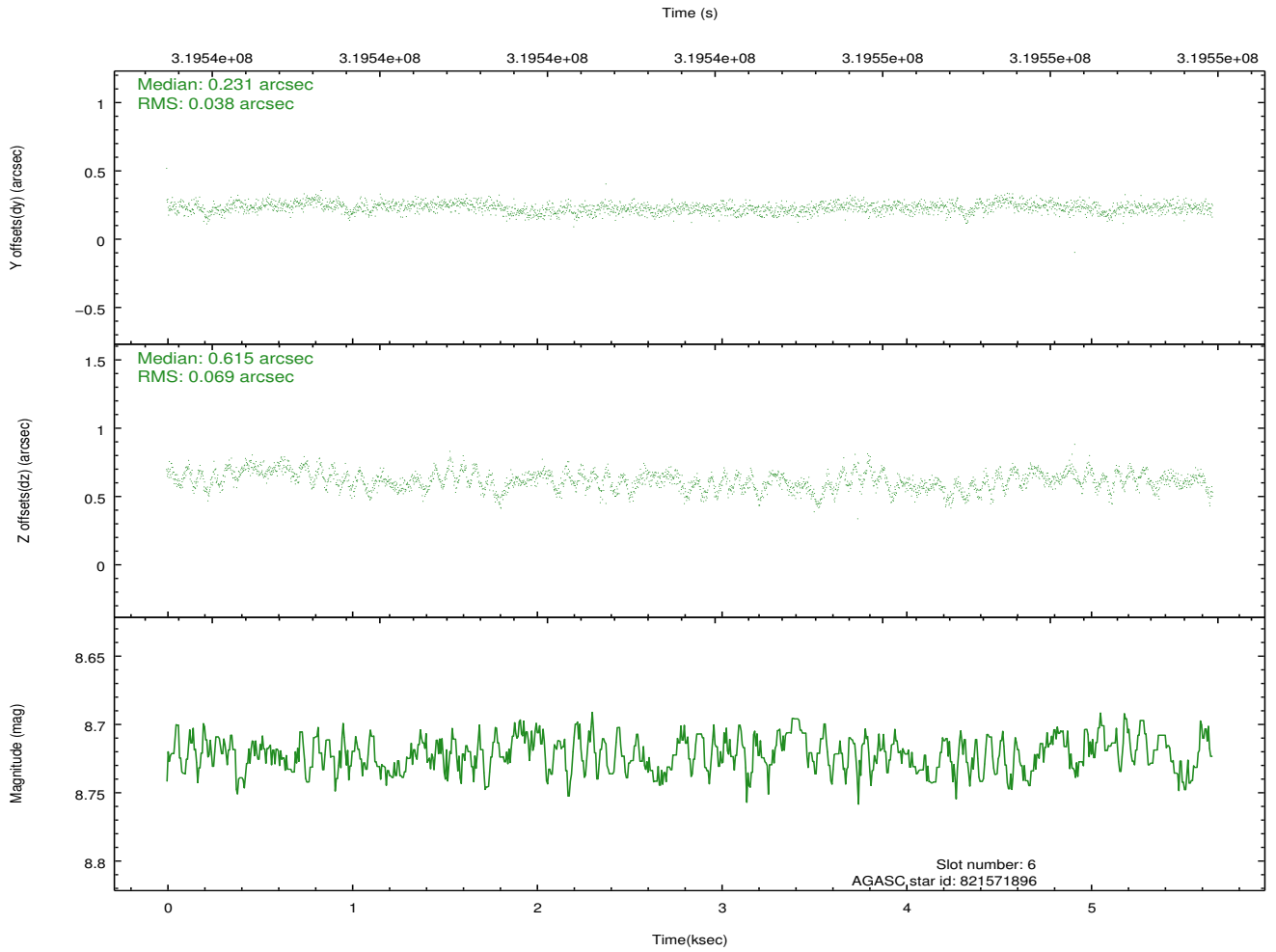
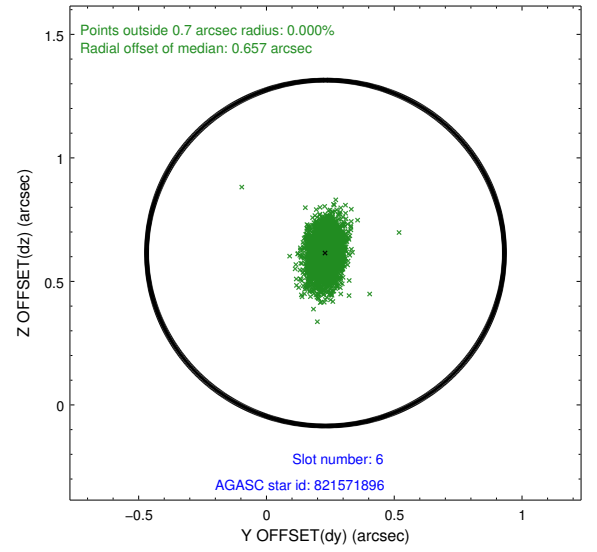
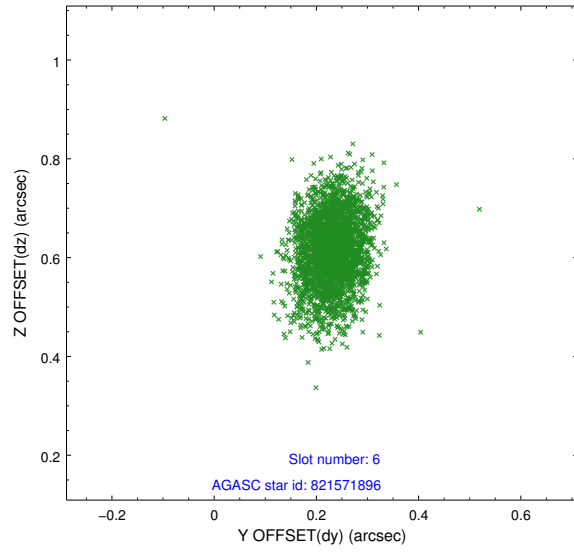
2.4.2 Slot 4



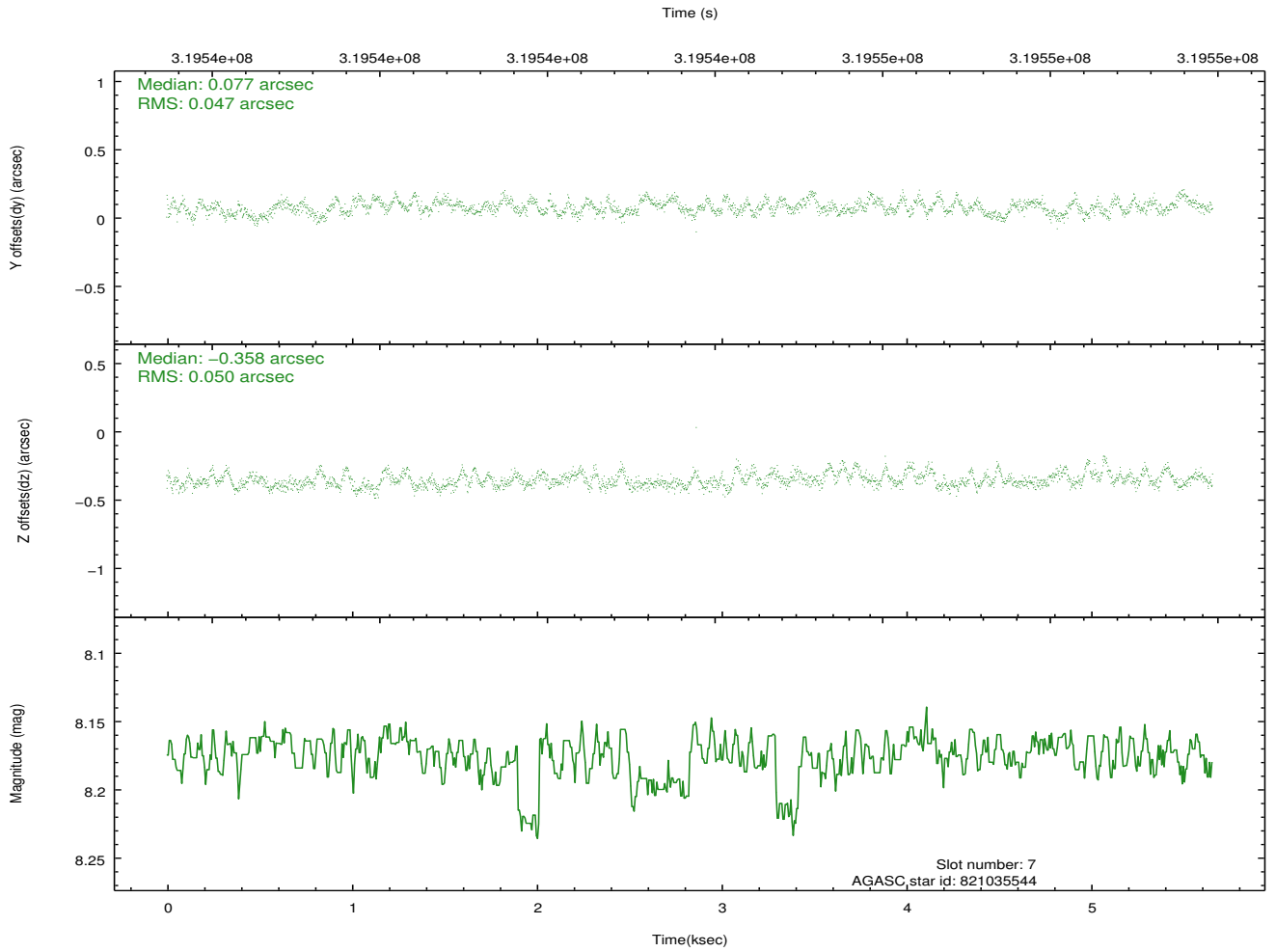
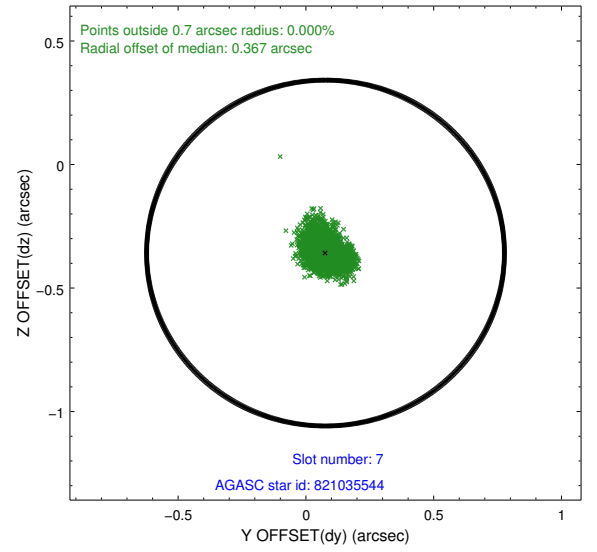
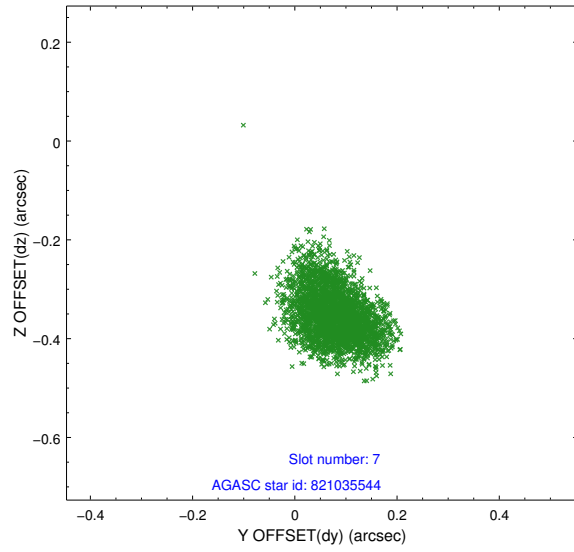
2.4.3 Slot 5



2.4.4 Slot 6

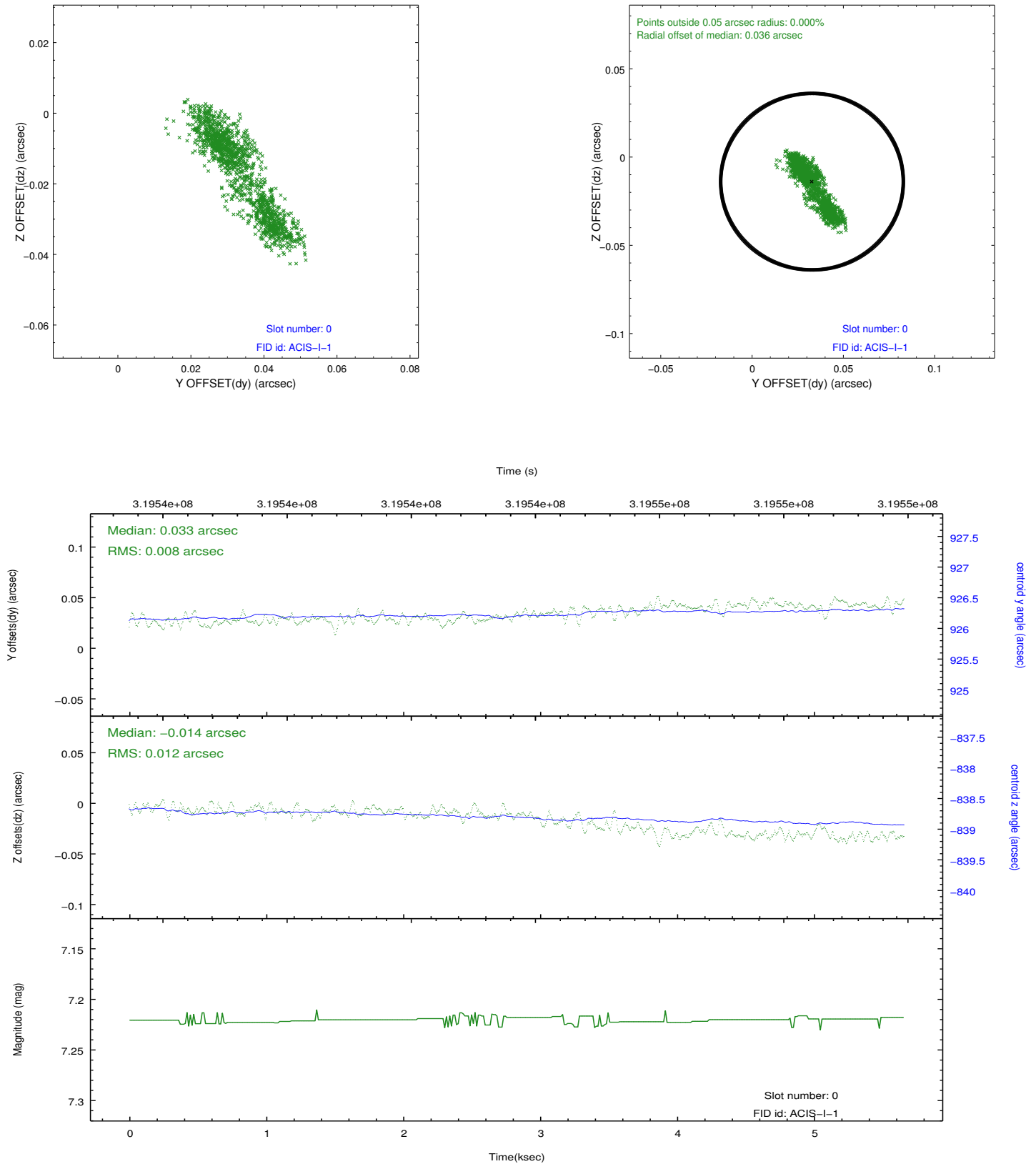


2.4.5 Slot 7

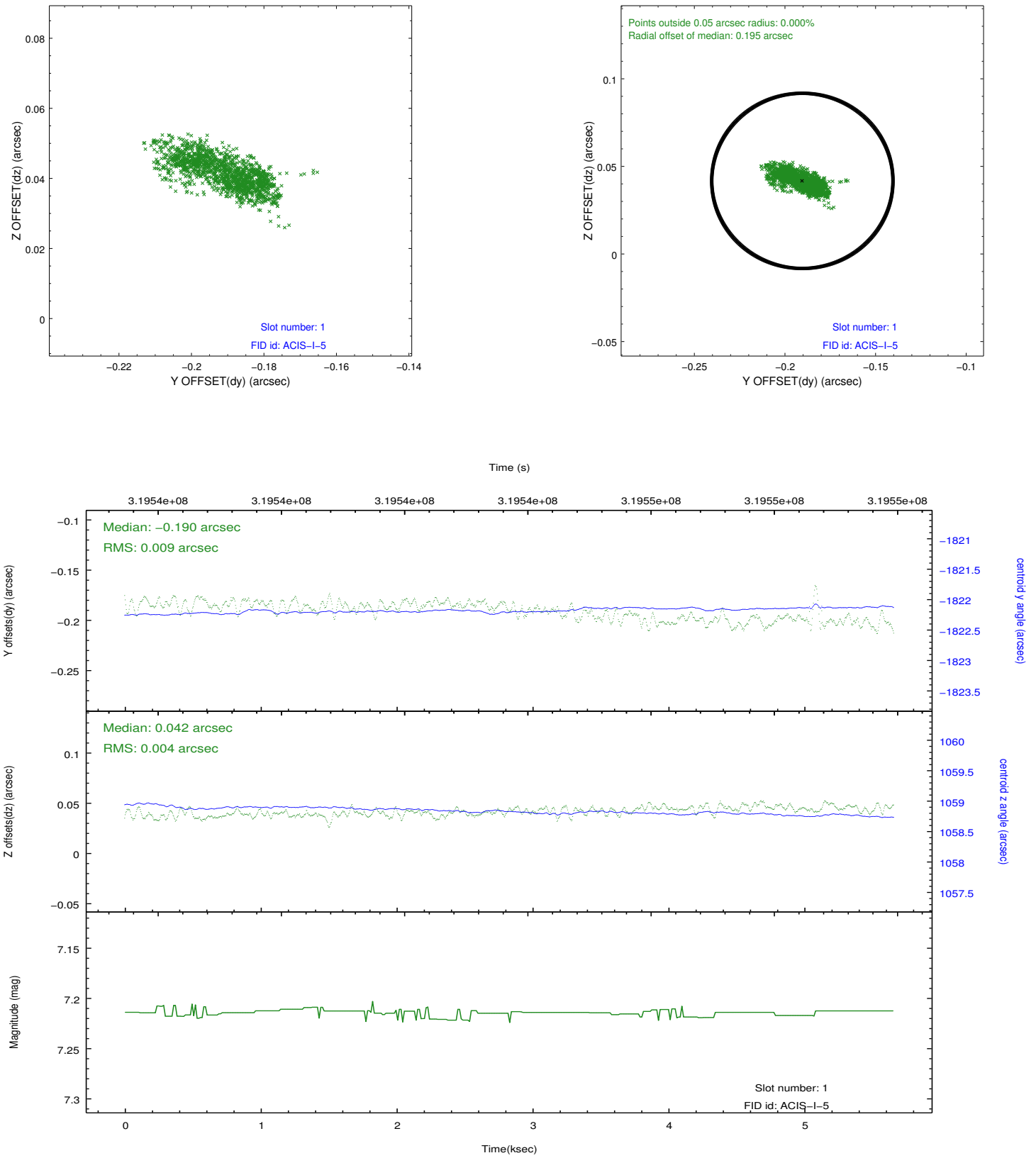


2.5 FID Slots

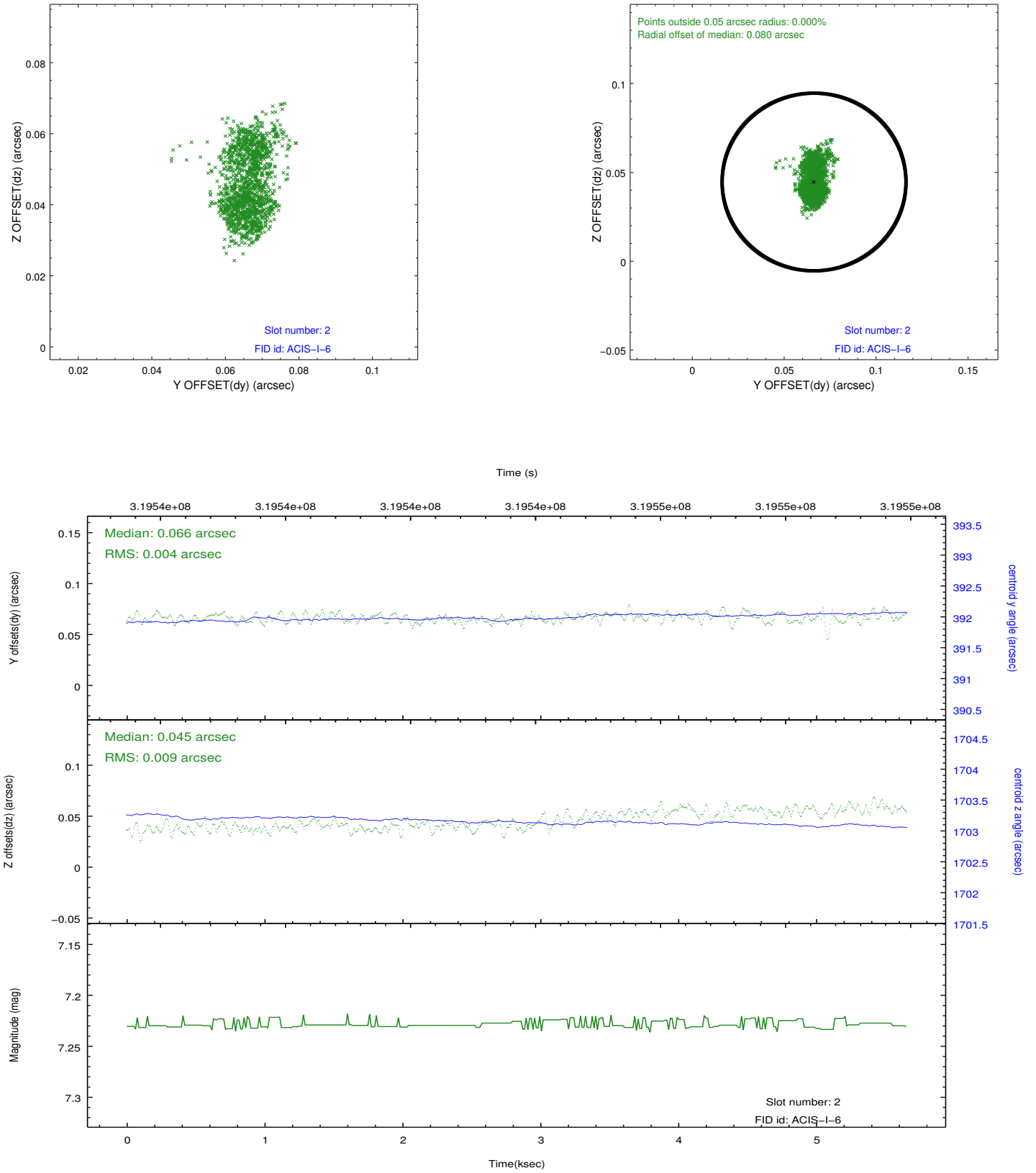
2.5.1 Slot 0



2.5.2 Slot 1



2.5.3 Slot 2



A Summary

A.1 Status

V&V Scientist	Jen Lauer
V&V Date (YYYY-MM-DD)	2012.05.11
V&V Edition	1
V&V Disposition and Status	OK
V&V Charge Time	4.95359998

A.2 Comments

Joint proposal: NOAO. Window constraint met.