

V&V Reference Report

L2 ASCDS Version : 8.4.4

Observation 8052 - L2 Version 2
Chandra X-Ray Center

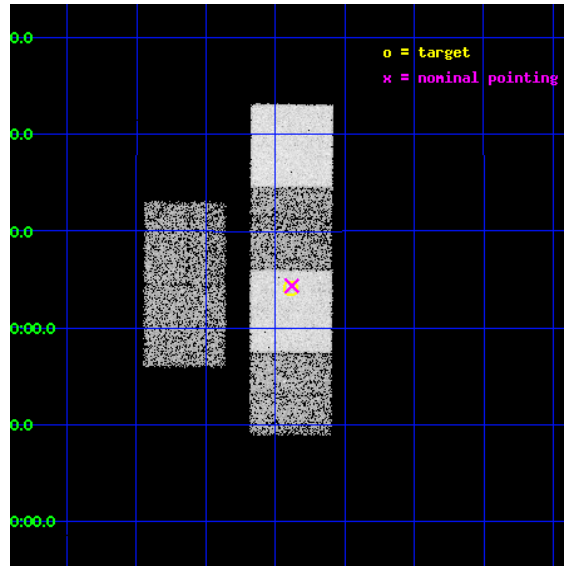
L2 Processing Date : May 9 2012

Contents

1	Front	2
2	OBI	3
2.1	OBI	3
2.1.1	Images	3
2.1.2	Bias	3
2.1.3	Parameters	4
2.1.4	Events	4
2.2	Compared Parameters	5
2.3	Aspect	6
2.4	Star Slots	9
2.4.1	Slot 3	9
2.4.2	Slot 4	10
2.4.3	Slot 5	11
2.4.4	Slot 6	12
2.4.5	Slot 7	13
2.5	FID Slots	14
2.5.1	Slot 0	14
2.5.2	Slot 1	15
2.5.3	Slot 2	16
A	Summary	17
A.1	Status	17
A.2	Comments	17

1 Front

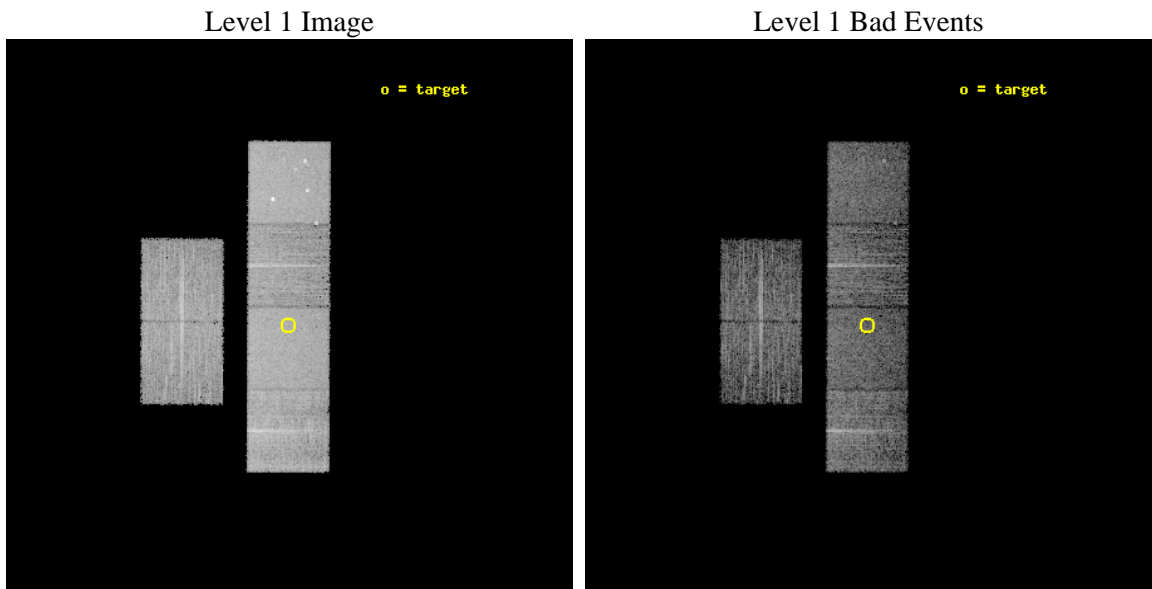
seq_num	900593	Sequence number
obs_id	8052	Observation id
title	The Duty Cycle of Supermassive Black Holes: X-raying Virgo	Proposa
observer	Prof Tommaso Treu	Principal investigator
object	1242	Source name
dtcycle	0	
cycle	P	events from which exps? Prim/Second/Both
ra_targ	187.472917	Observer's specified target RA [deg]
dec_targ	14.068611	Observer's specified target Dec [deg]
ra_nom	187.4702687502	Nominal RA [deg]
dec_nom	14.072605212507	Nominal Dec [deg]
roll_nom	90.2447170936	Nominal Roll [deg]
revision	2	Processing version of data
ontime	5158.3999808431	Sum of GTIs [s]
livetime	5093.0812142701	Livetime [s]
ontime2	5158.3999808431	Sum of GTIs [s]
ontime3	5158.3999808431	Sum of GTIs [s]
ontime5	5158.3999808431	Sum of GTIs [s]
ontime6	5158.3999808431	Sum of GTIs [s]
ontime7	5158.3999808431	Sum of GTIs [s]
ontime8	5155.1590005159	Sum of GTIs [s]
l2events	84070	Number of level 2 events



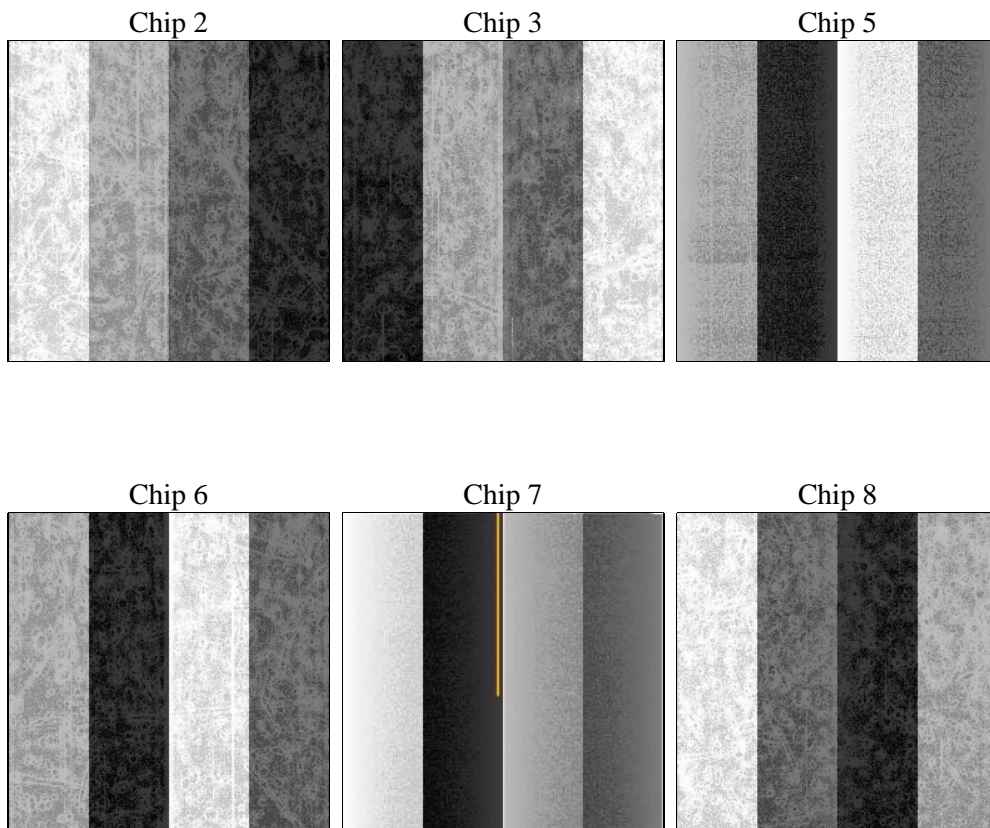
2 OBI

2.1 OBI

2.1.1 Images



2.1.2 Bias



2.1.3 Parameters

obi_num	1	Obi number	sched_exp_time	5400.000000	[s] Scheduled observation exposure time
ascdsver	8.4.4	Processing system revision	ontime	5158.3999808431	Sum of GTIs [s]
caldbver	4.4.9	 	ontime2	5158.3999808431	Sum of GTIs [s]
date	2012-05-09T19:28:13	Date and time of file creation	ontime3	5158.3999808431	Sum of GTIs [s]
revision	2	Processing version of data	ontime5	5158.3999808431	Sum of GTIs [s]
			ontime6	5158.3999808431	Sum of GTIs [s]
			ontime7	5158.3999808431	Sum of GTIs [s]
			ontime8	5155.1590005159	Sum of GTIs [s]
			l1events	363663	Number of level 1 events

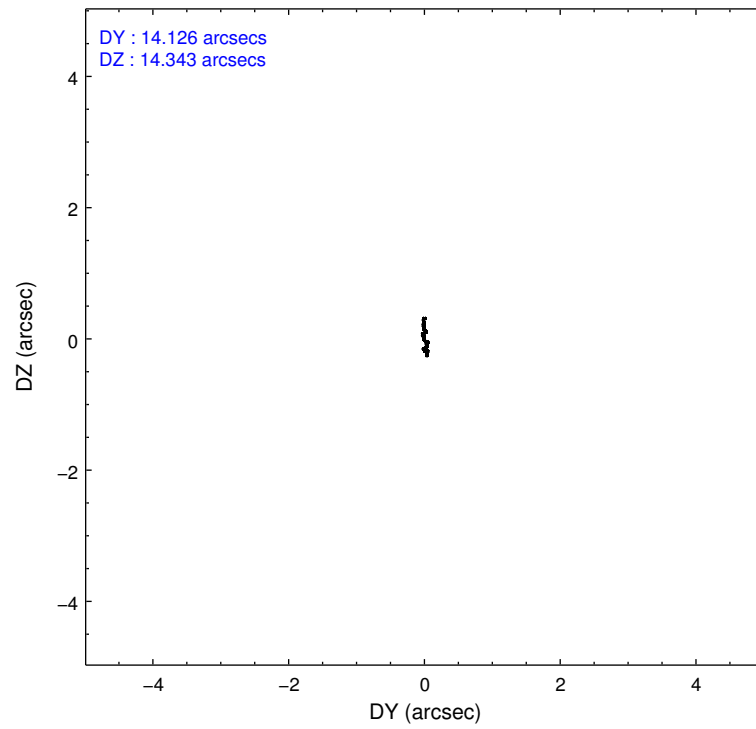
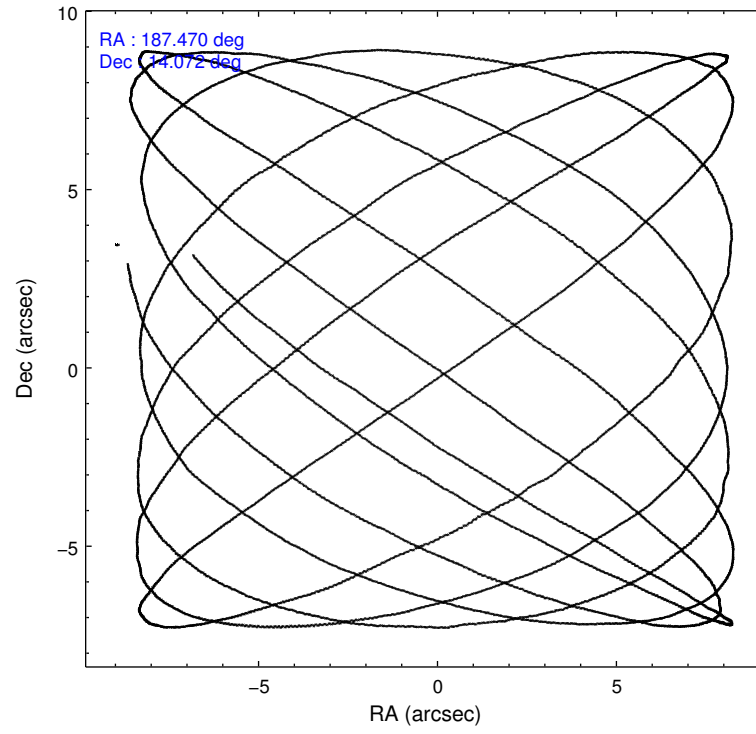
2.1.4 Events

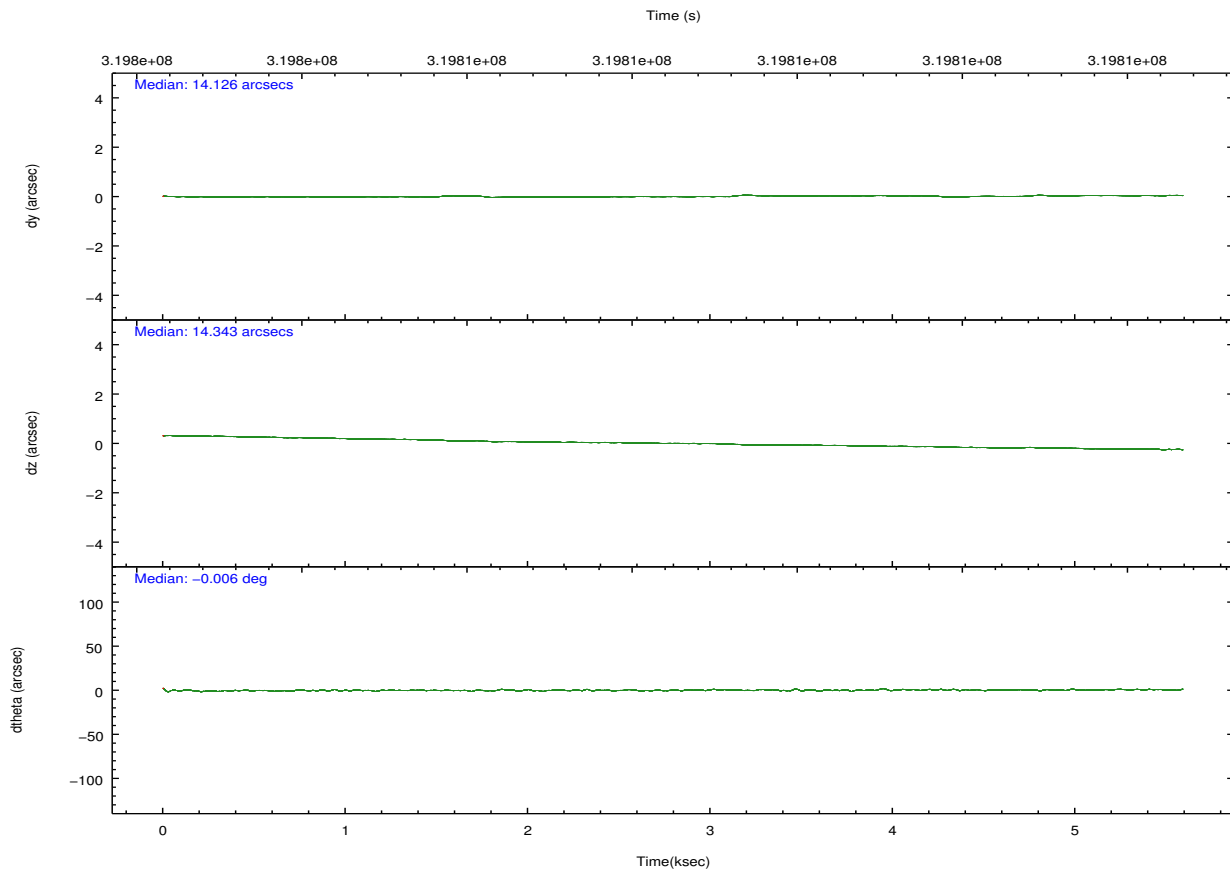
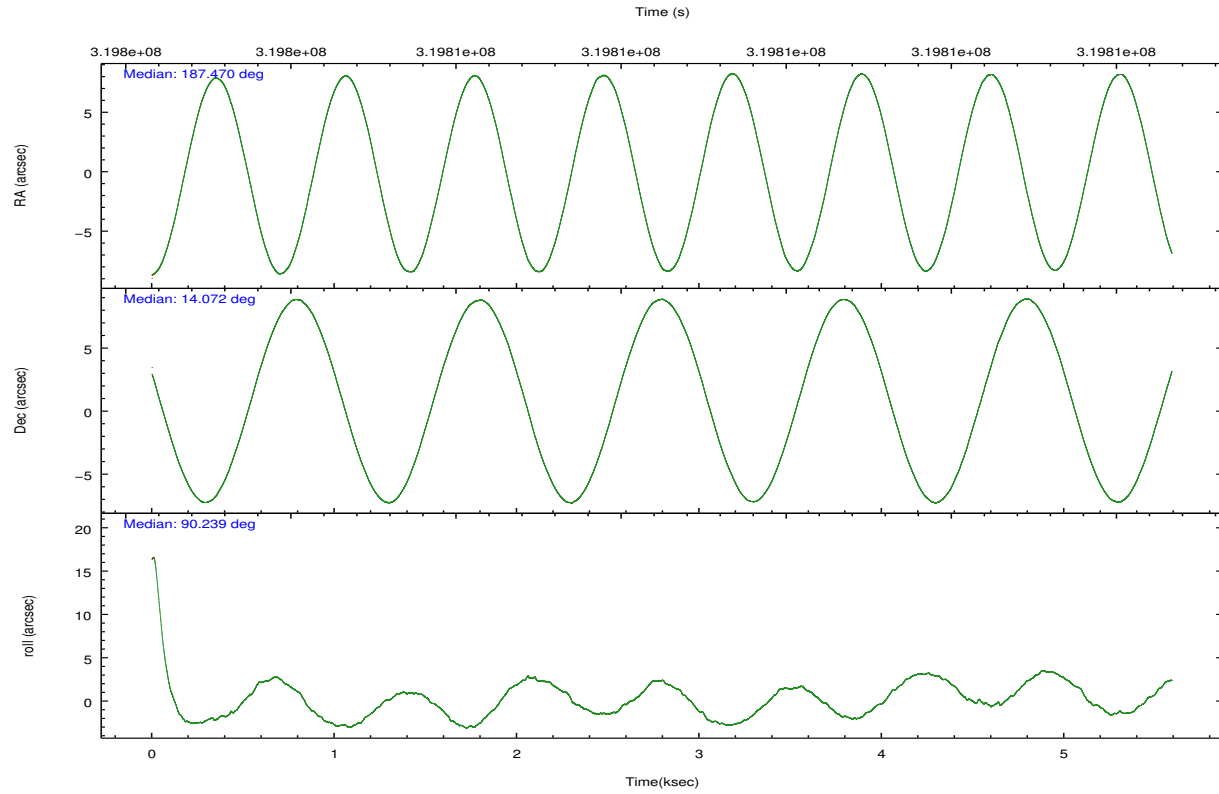
	ccd 2	ccd 3	ccd 5	ccd 6	ccd 7	ccd 8		ccd 2	ccd 3	ccd 5	ccd 6	ccd 7	ccd 8
level 1 events	49666	48989	77614	49690	69777	67927	grade 0 events	2707	2778	4523	2552	2736	5091
rejected events	43598	42864	41204	43539	40462	52227		5%	5%	5%	5%	3%	7%
rejected %	87%	87%	53%	87%	57%	76%	grade 1 events	28	37	123	31	65	51
								0%	0%	0%	0%	0%	0%
							grade 2 events	1294	1167	10923	1389	5855	3530
								2%	2%	14%	2%	8%	5%
							grade 3 events	533	568	1299	553	2558	1586
								1%	1%	1%	1%	3%	2%
							grade 4 events	555	585	1234	554	2522	1449
								1%	1%	1%	1%	3%	2%
							grade 5 events	2014	2235	5541	2347	6652	3051
								4%	4%	7%	4%	9%	4%
							grade 6 events	983	1027	18453	1106	15654	4048
								1%	2%	23%	2%	22%	5%
							grade 7 events	41552	40592	35518	41158	33735	49121
								83%	82%	45%	82%	48%	72%

2.2 Compared Parameters

Parameter	Planned	Actual	Parameter	Planned	Actual
Instrument	ACIS	ACIS	Obspar format version number	7	7
Detector	ACIS-235678	ACIS-235678	Obspar file type	PREDICTED	ACTUAL
Grating	NONE	NONE	Obspar update status	NONE	UPDATED
Data mode	FAINT	FAINT	CCD I0 on	N	N
Observation mode	POINTING	POINTING	CCD I1 on	N	N
[deg] Pointing RA	187.484799	187.4702687501959	CCD I2 on	O1	Y
[deg] Pointing Dec	14.049290	14.07260521250735	CCD I3 on	O2	Y
[deg] Pointing Roll	90.084534	90.24471709360037	CCD S0 on	N	N
[mm] SIM focus pos	-0.684267	-0.6828225247311905	CCD S1 on	O3	Y
[mm] SIM defocus	0	0.001444936568705701	CCD S2 on	Y	Y
[mm] SIM translation stage pos	-190.132523	-190.1400660498719	CCD S3 on	Y	Y
[mm] SIM translation stage offset	0	0.00754346686406393	CCD S4 on	O4	Y
[s] Observation start time (MET)	319804641.184000	319804184.935	CCD S5 on	N	N
Observation start date	2008-02-19T10:36:16	2008-02-19T10:29:44	Number of optional ACIS chips dropped	0	0
[s] Observation end time (MET)	319810041.184000	319810244.22279	On-chip summing requested	N	N
Observation end date	2008-02-19T12:06:16	2008-02-19T12:10:44	Subarray requested	NONE	NONE
Read mode	TIMED	TIMED	Alternating exposures requested	N	N
			[s] Primary exposure time	0.000000	3.2

2.3 Aspect



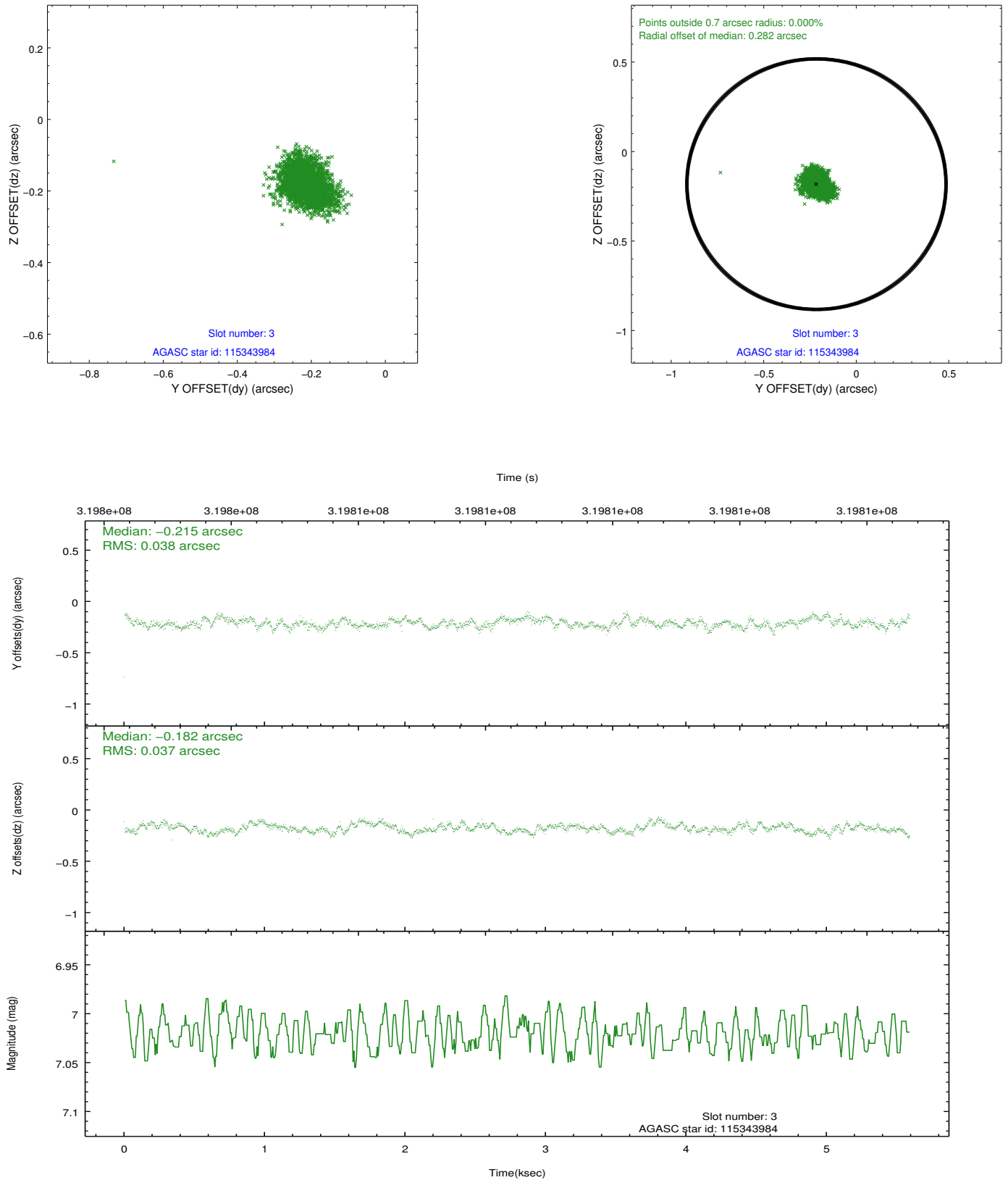


Slot Statistics

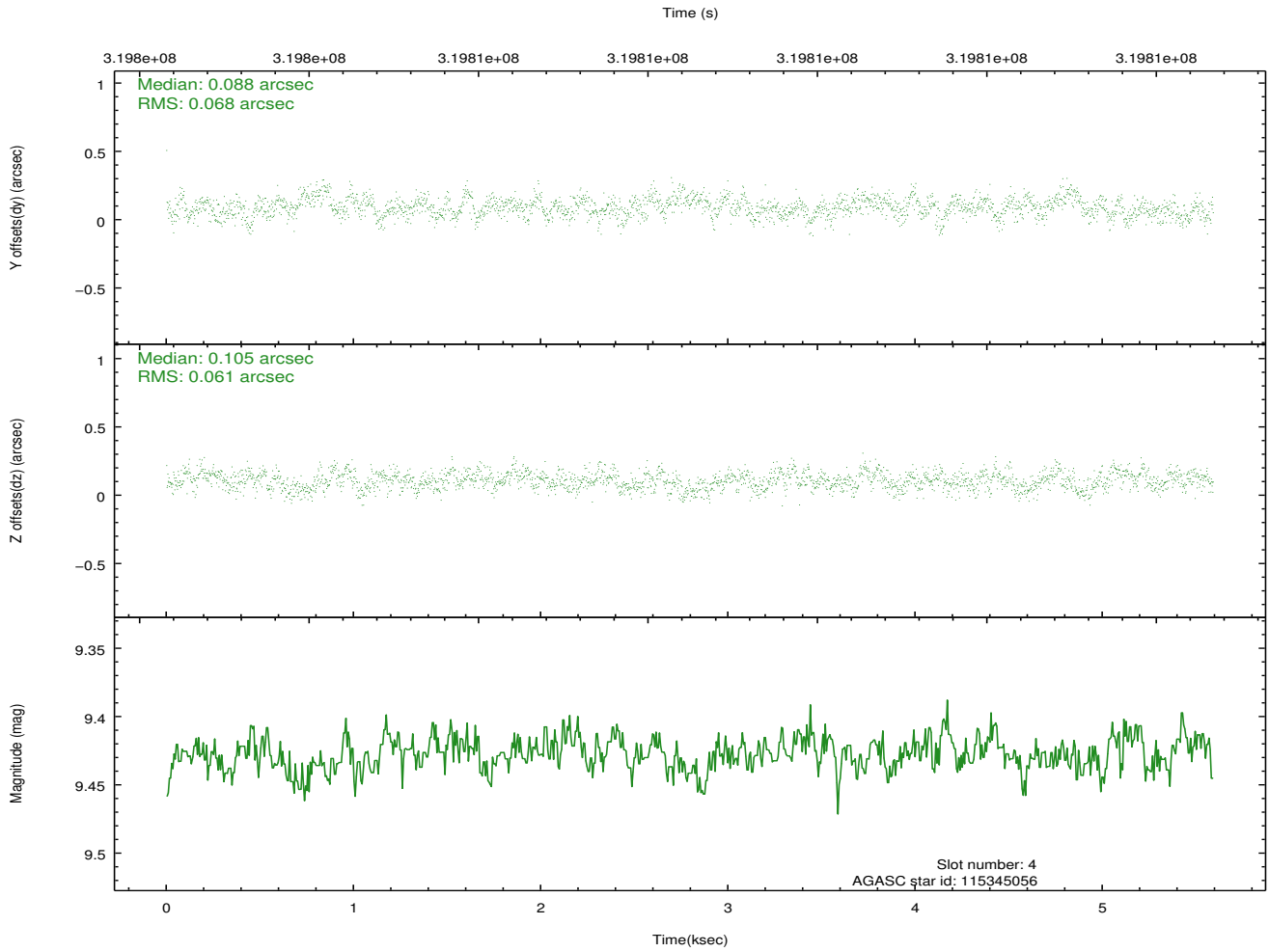
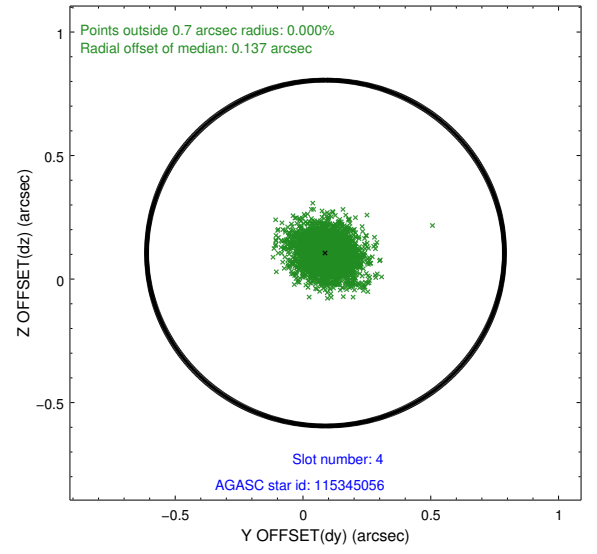
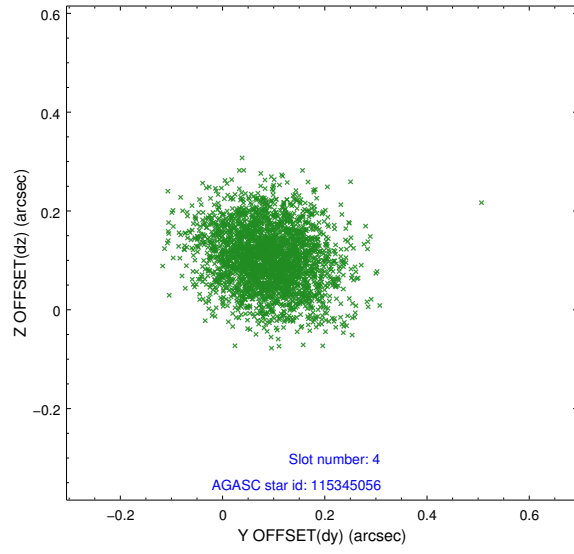
slot	status	id	mag	n_pts	med_dy	med_dz	dr1	dr2	ra	dec	mean_y	mean_z
0	FID	ACIS-S-1	7.18	1364	0.062	-0.020	0.009	0.014	0.000000	0.000000	929.03	-1731.35
1	FID	ACIS-S-5	7.23	1364	-0.148	0.037	0.007	0.012	0.000000	0.000000	-1819.59	165.13
2	FID	ACIS-S-6	7.33	1364	0.065	-0.006	0.010	0.018	0.000000	0.000000	393.41	810.28
3	GUIDE	115343984	7.02	2727	-0.215	-0.182	0.056	0.091	187.445111	14.650185	2164.01	135.58
4	GUIDE	115345056	9.43	2722	0.088	0.105	0.098	0.159	187.860673	14.574305	1890.89	-1311.35
5	GUIDE	115347648	7.99	2728	0.007	-0.140	0.066	0.100	187.273687	13.950334	-353.41	737.64
6	GUIDE	115349560	9.86	2724	0.162	0.226	0.177	0.292	188.086555	13.583828	-1675.27	-2100.61
7	GUIDE	115350296	9.08	2724	-0.038	-0.009	0.081	0.131	187.140806	13.950701	-352.30	1201.69

2.4 Star Slots

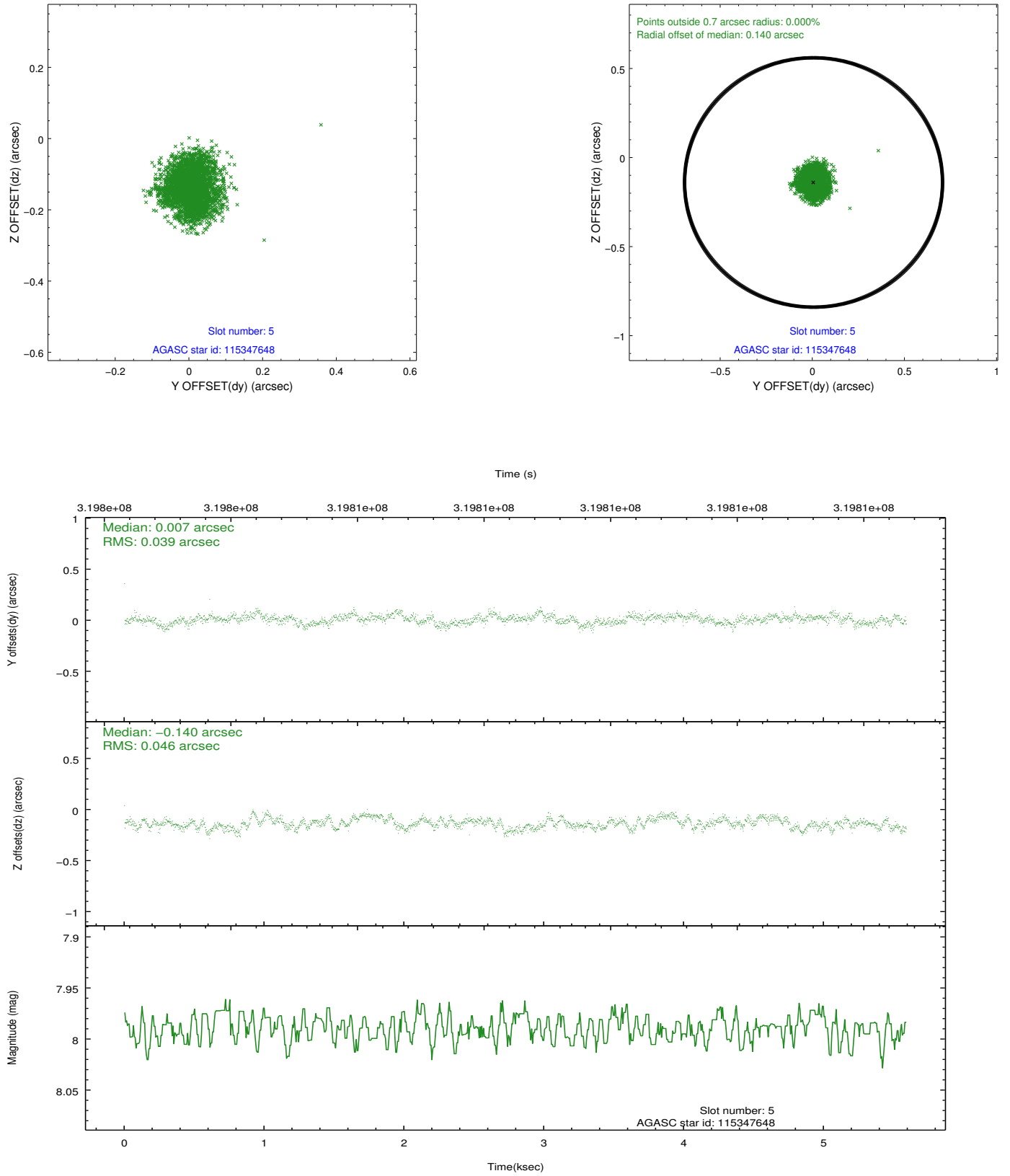
2.4.1 Slot 3



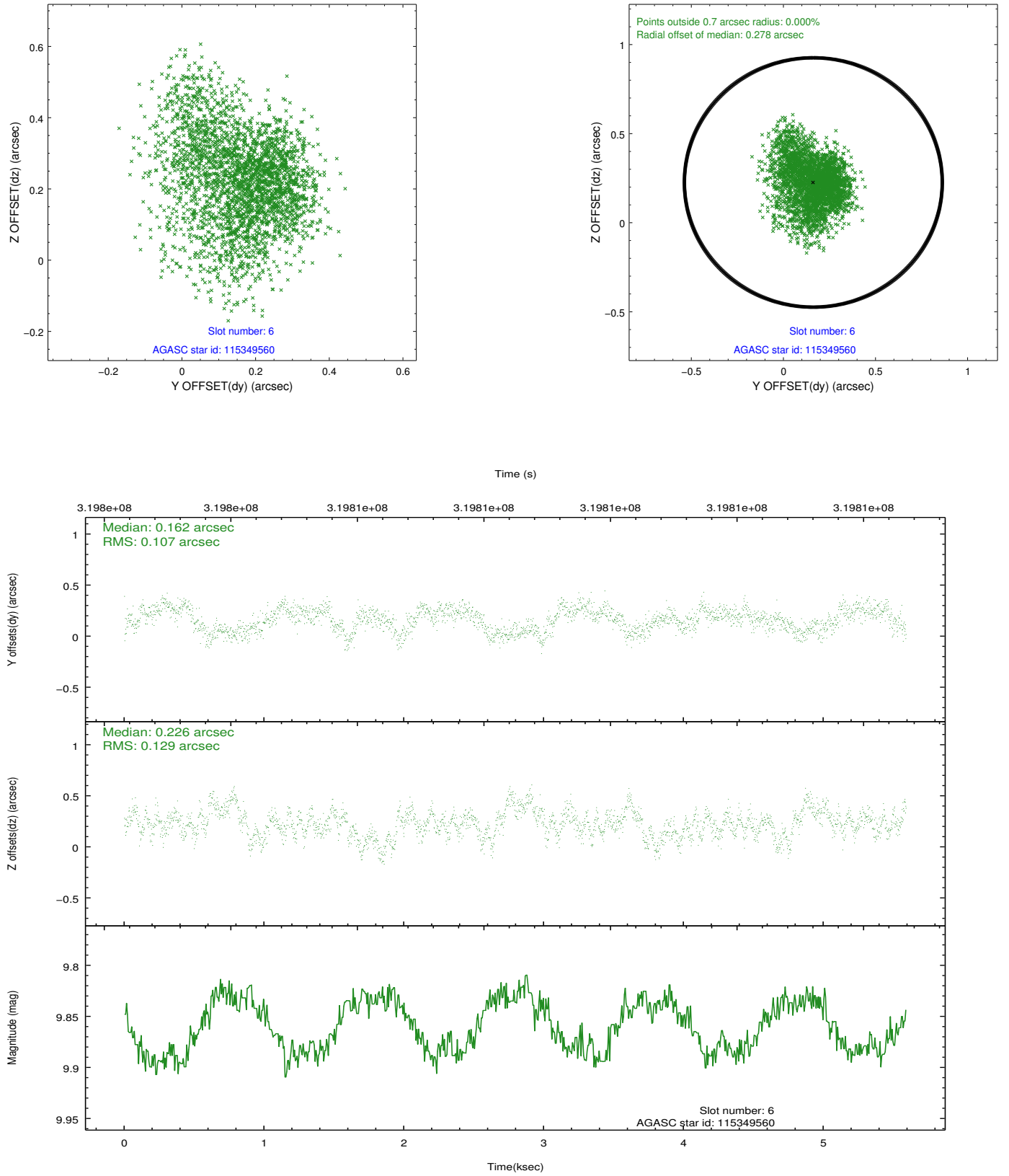
2.4.2 Slot 4



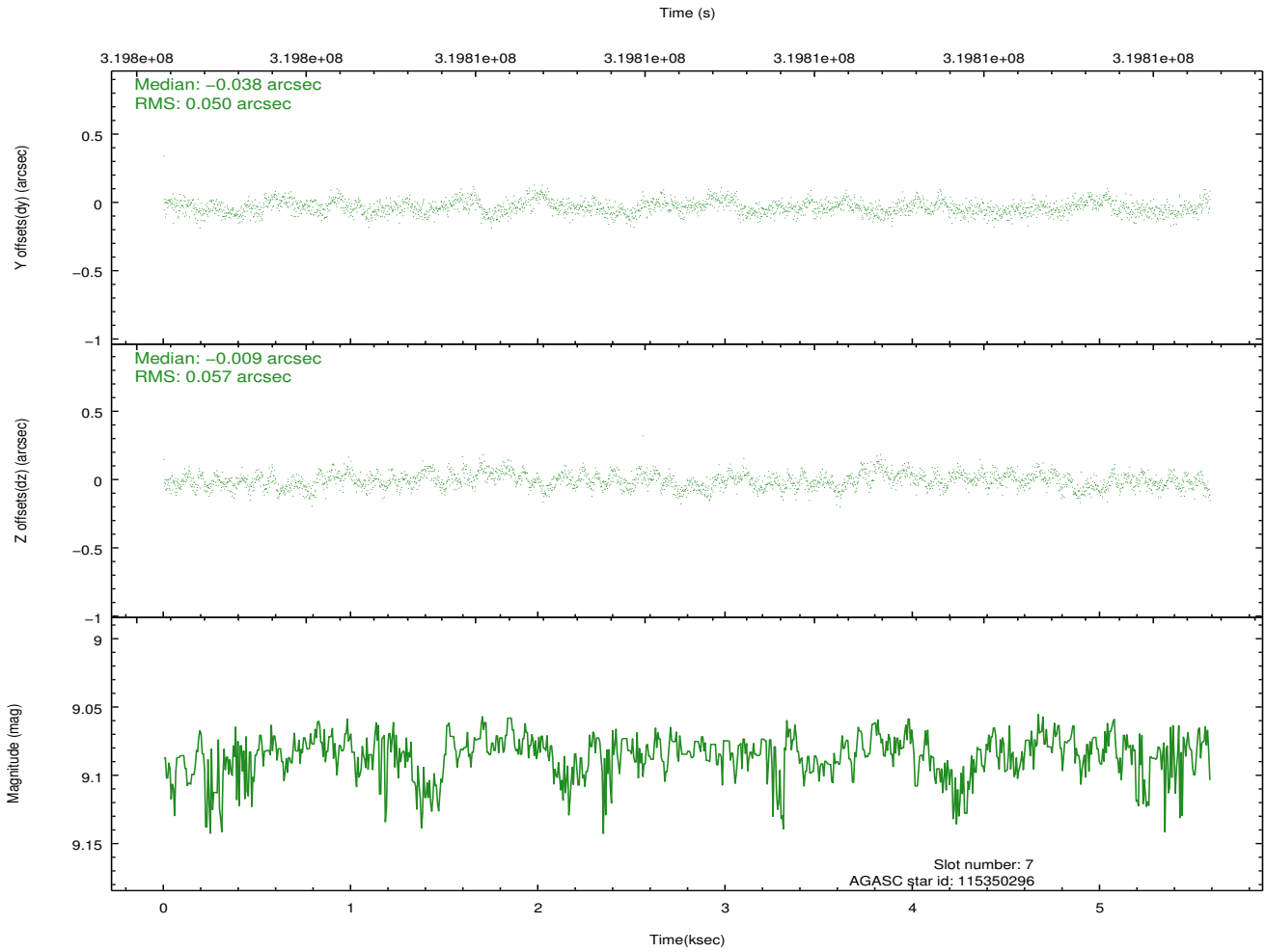
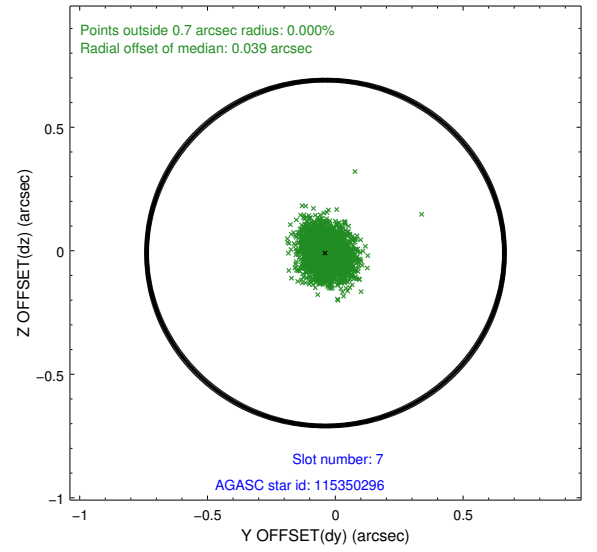
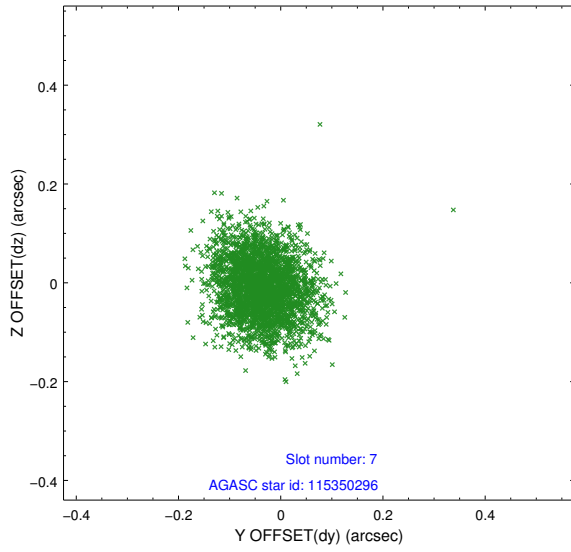
2.4.3 Slot 5



2.4.4 Slot 6

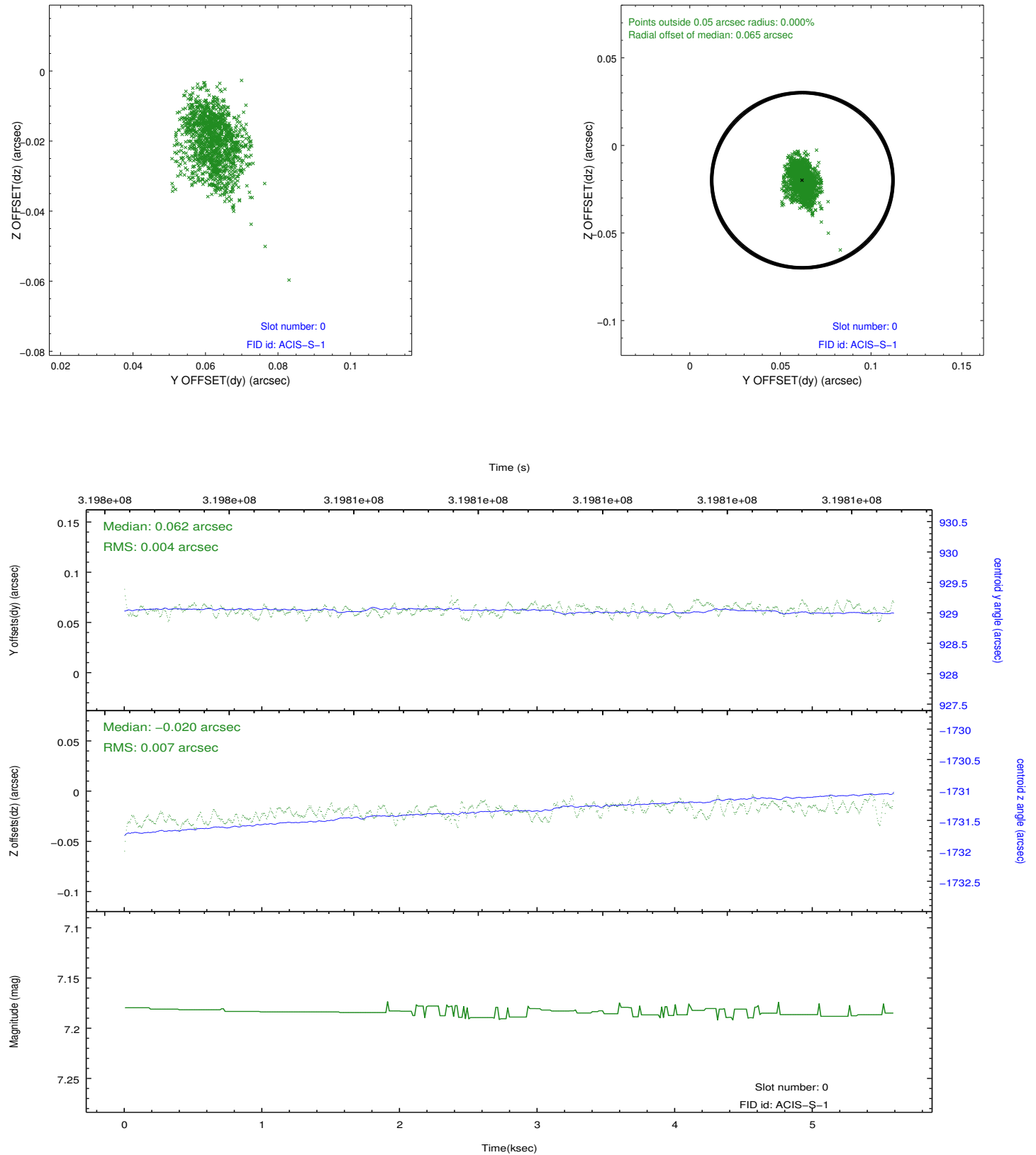


2.4.5 Slot 7

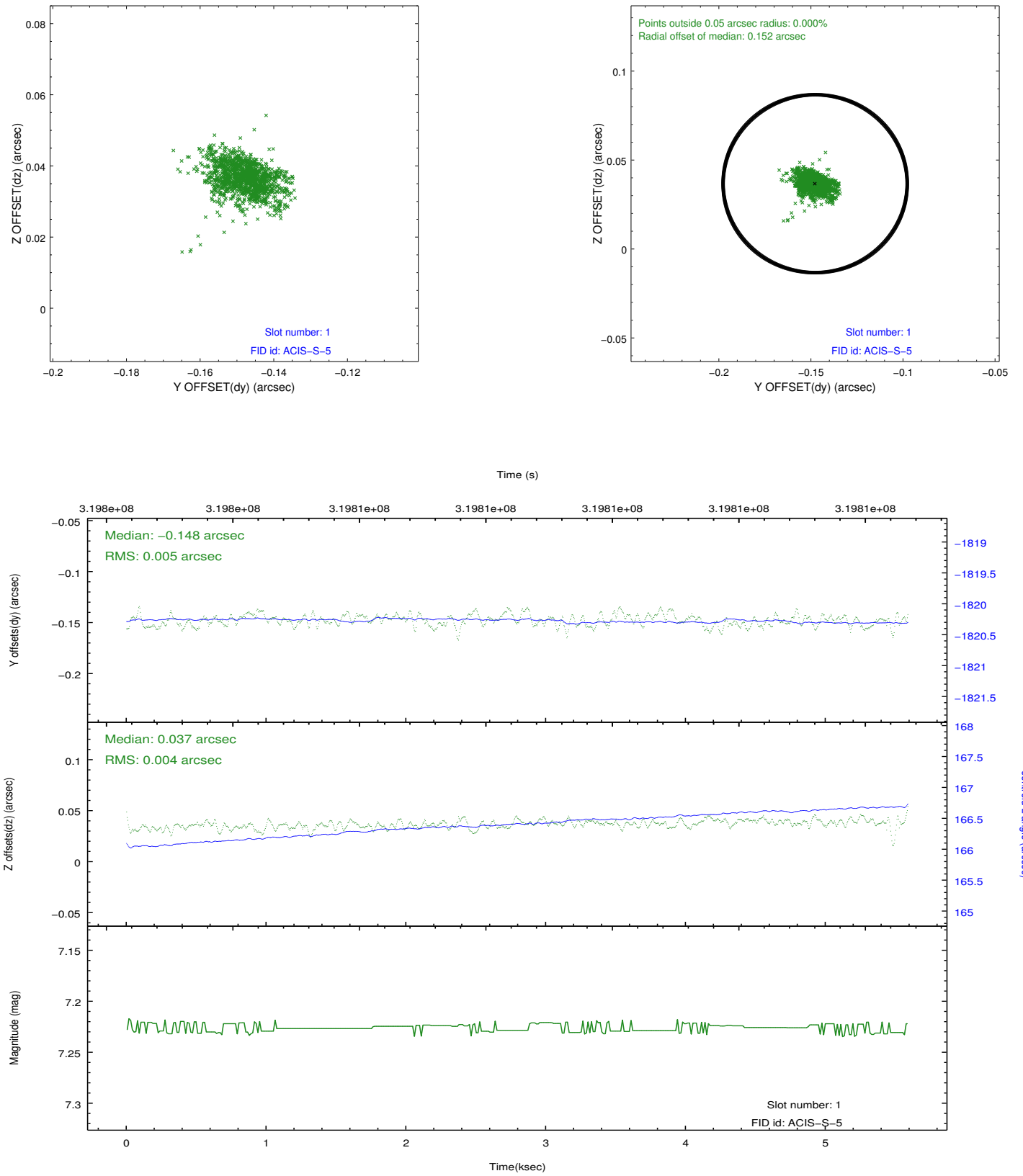


2.5 FID Slots

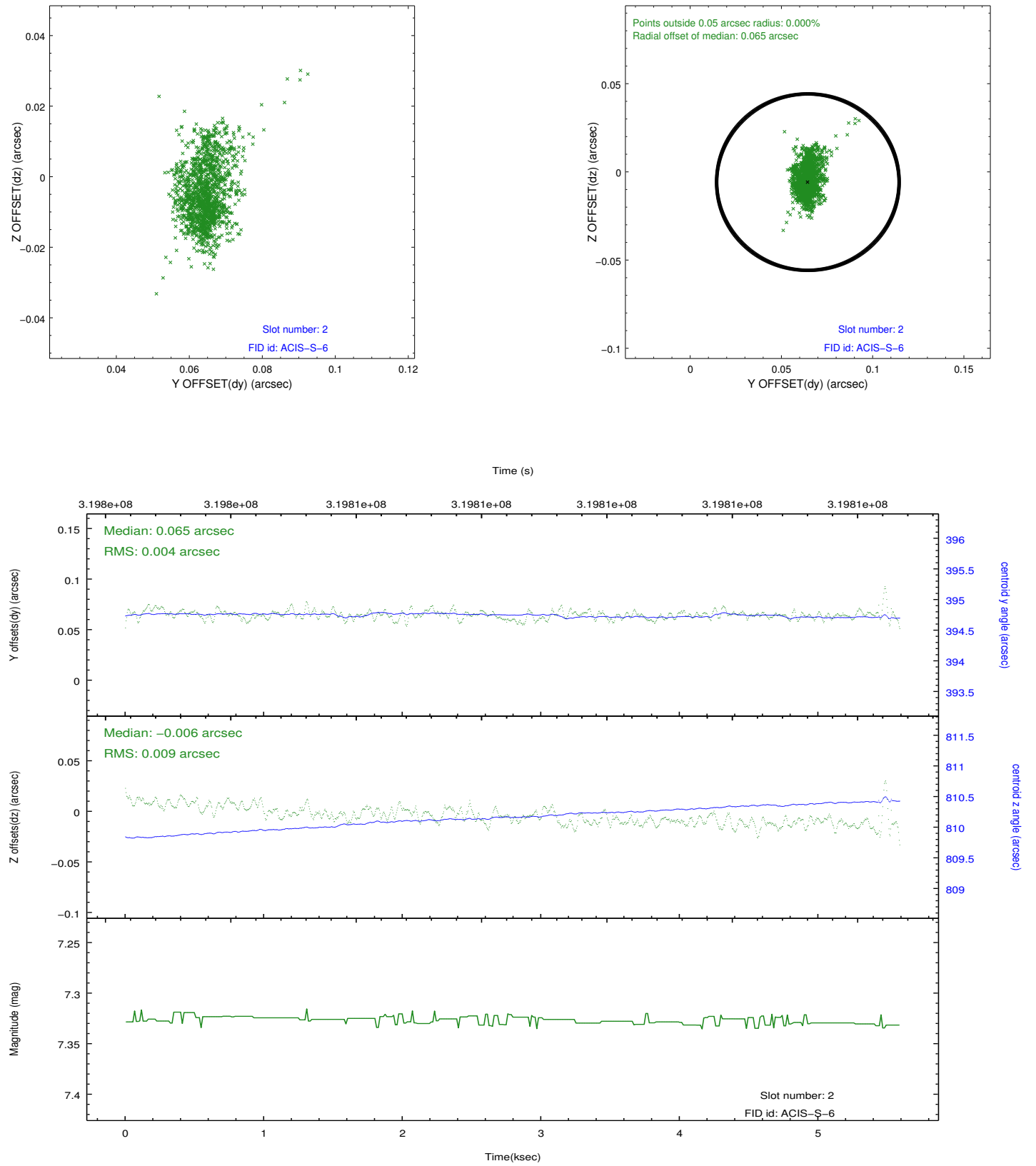
2.5.1 Slot 0



2.5.2 Slot 1



2.5.3 Slot 2



A Summary

A.1 Status

V&V Scientist	Jen Lauer
V&V Date (YYYY-MM-DD)	2012.05.11
V&V Edition	1
V&V Disposition and Status	OK
V&V Charge Time	5.15839998

A.2 Comments

Joint Proposal: Spitzer