

V&V Reference Report

L2 ASCDS Version : 7.6.7.1

Observation 6352 - L2 Version 002
Chandra X-Ray Center

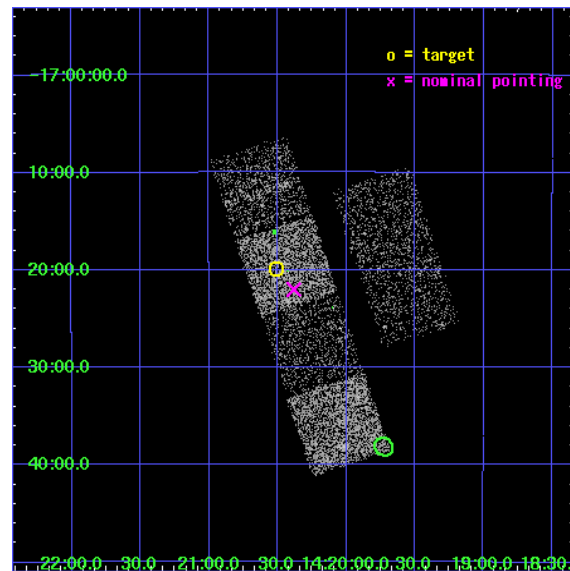
L2 Processing Date : Mar 15 2006

Contents

1	Front	2
2	OBI	3
2.1	OBI	3
2.1.1	Images	3
2.1.2	Bias	3
2.1.3	Parameters	4
2.1.4	Events	4
2.2	Compared Parameters	5
2.3	Aspect	6
2.4	Star Slots	9
2.4.1	Slot 3	9
2.4.2	Slot 4	10
2.4.3	Slot 5	11
2.4.4	Slot 6	12
2.4.5	Slot 7	13
2.5	FID Slots	14
2.5.1	Slot 0	14
2.5.2	Slot 1	15
2.5.3	Slot 2	16
3	Point Sources	17
A	Summary	18
A.1	Status	18
A.2	Comments	18

1 Front

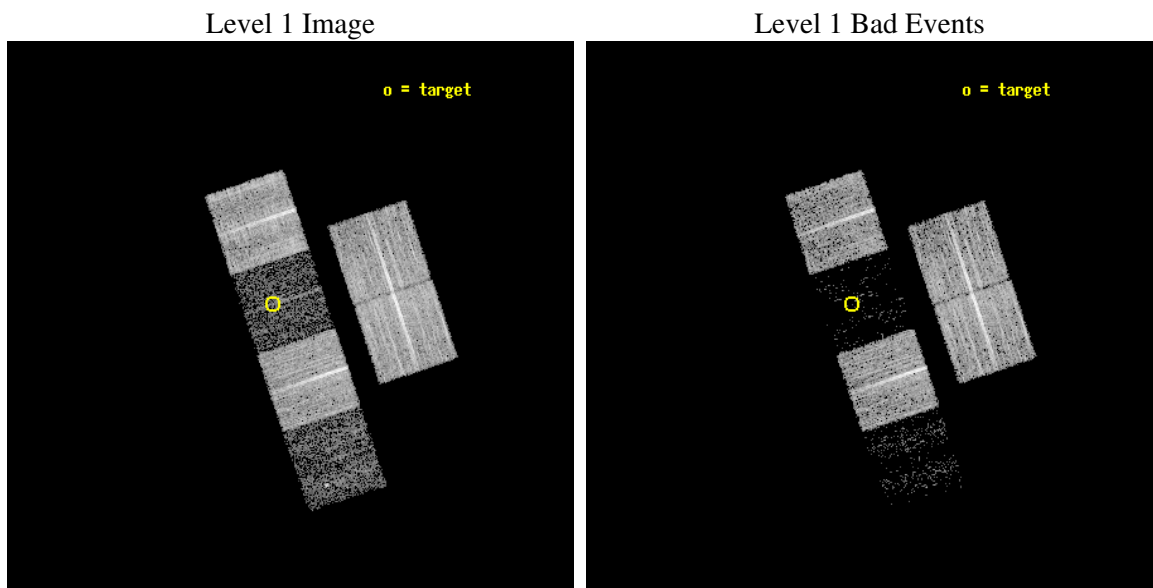
seq_num	100058
obs_id	6352
title	Comet 9P/Tempel 1 During the Deep Impact Encounter
observer	Dr. Carey Lisse
object	9P/Tempel 1
dtcycle	0
cycle	P
ra_targ	215.128008
dec_targ	-17.332119
ra_nom	215.09545106538
dec_nom	-17.366896396901
roll_nom	251.54546872466
revision	2
ontime	8175.999969542
livetime	8072.4705349315
ontime2	8175.999969542
ontime3	8175.999969542
ontime5	8175.999969542
ontime6	8175.999969542
ontime7	8175.999969542
ontime8	8175.999969542
l2events	11982



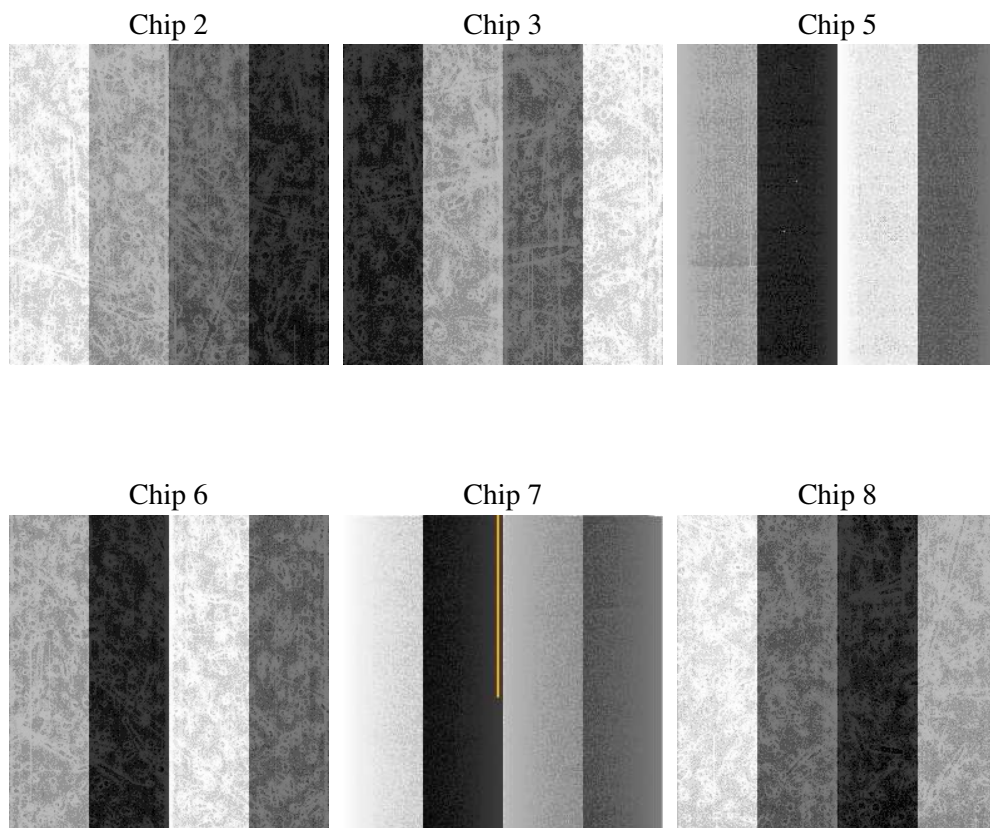
2 OBI

2.1 OBI

2.1.1 Images



2.1.2 Bias



2.1.3 Parameters

obi_num	0
ascdsver	7.6.7.1
caldsver	3.2.1
date	2006-03-15T17:40:37
revision	2

sched_exp_time	8000.000000
ontime	8374.7506432831
ontime2	8374.7506432831
ontime3	8377.9916633666
ontime5	8374.7506432831
ontime6	8374.7506432831
ontime7	8374.7506432831
ontime8	8377.9916633666
l1events	169705

2.1.4 Events

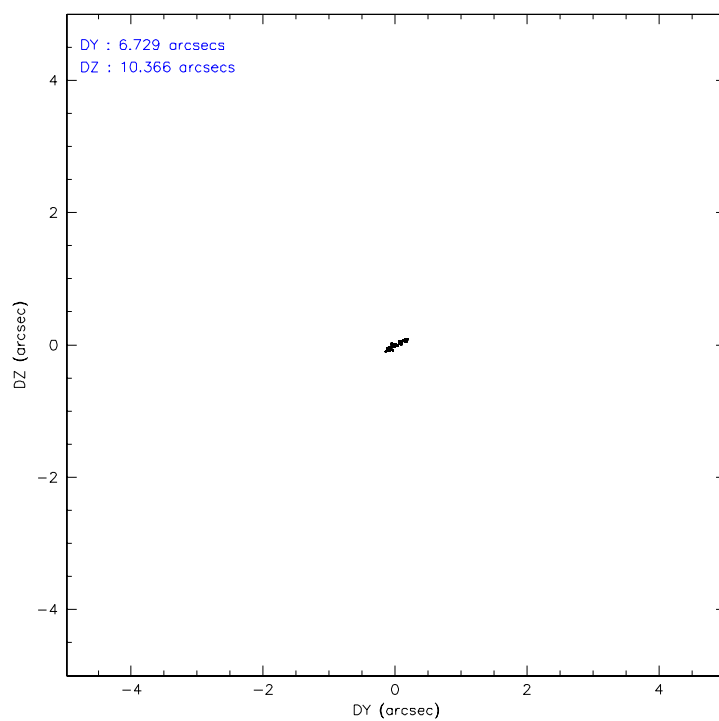
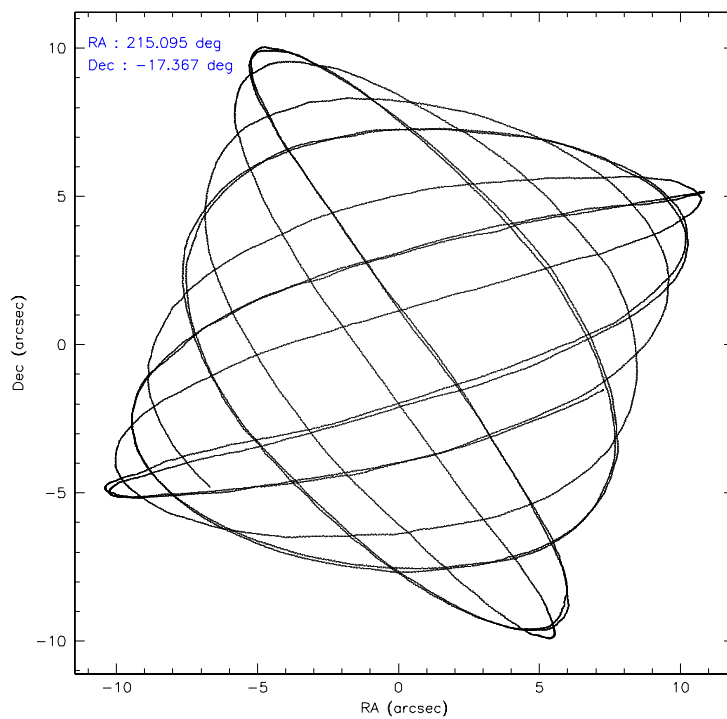
	ccd 2	ccd 3	ccd 5	ccd 6	ccd 7	ccd 8
level 1 events	43913	37083	6419	36588	5346	40356
rejected events	42230	35783	2172	35047	1231	30559
rejected %	96%	96%	33%	95%	23%	75%

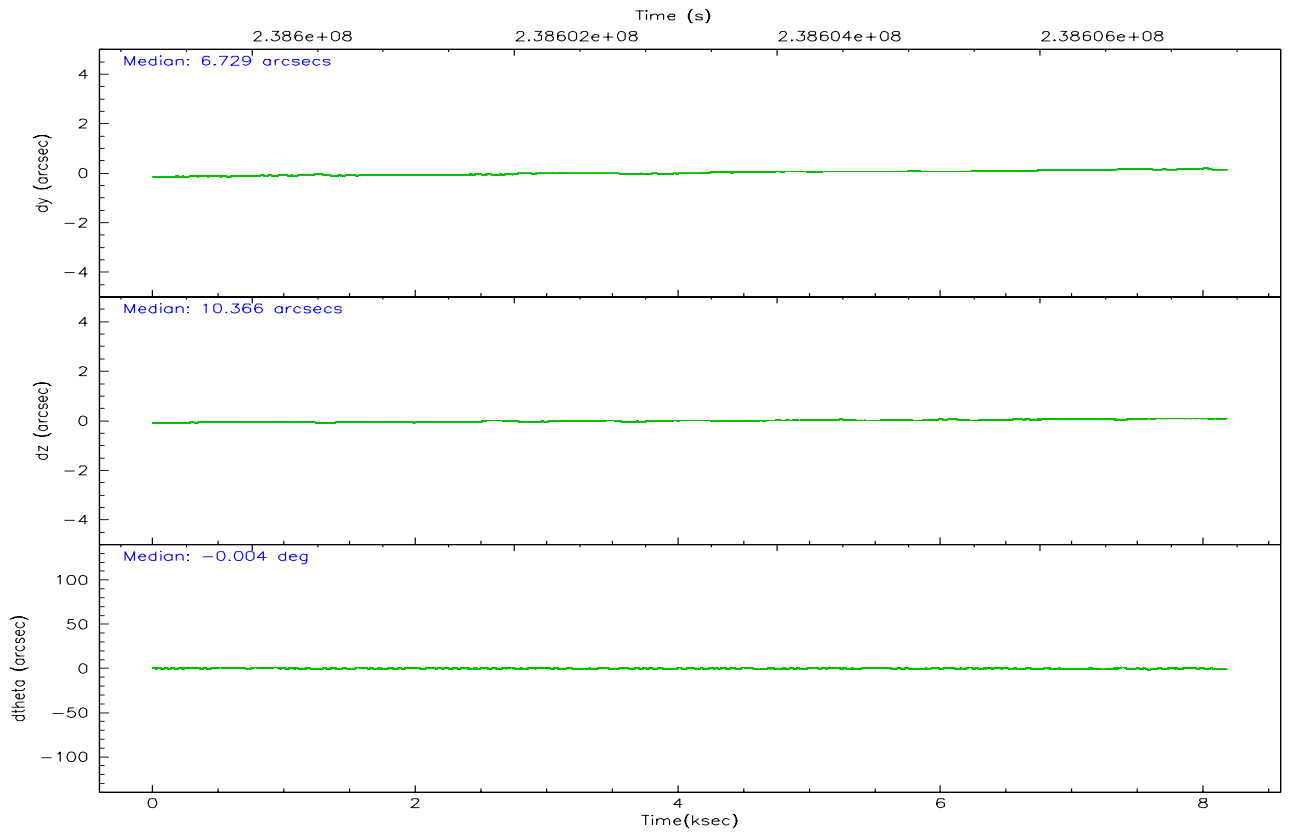
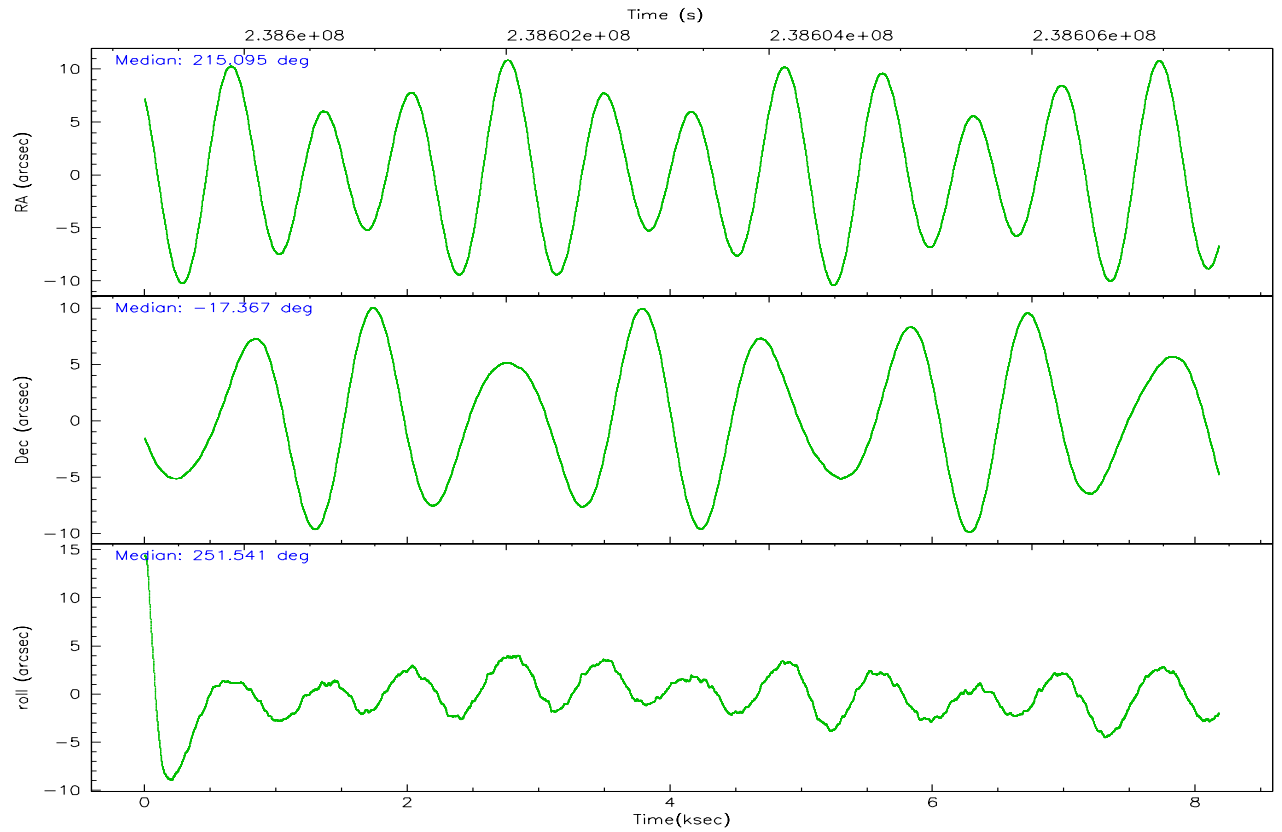
	ccd 2	ccd 3	ccd 5	ccd 6	ccd 7	ccd 8
grade 0 events	717	632	1031	768	1150	2702
	1%	1%	16%	2%	21%	6%
grade 1 events	8	8	11	8	17	20
	0%	0%	0%	0%	0%	0%
grade 2 events	411	156	1707	297	1393	2263
	0%	0%	26%	0%	26%	5%
grade 3 events	195	225	525	216	594	1154
	0%	0%	8%	0%	11%	2%
grade 4 events	254	186	541	210	583	956
	0%	0%	8%	0%	10%	2%
grade 5 events	44	33	308	24	129	207
	0%	0%	4%	0%	2%	0%
grade 6 events	146	127	552	92	520	2955
	0%	0%	8%	0%	9%	7%
grade 7 events	42138	35716	1744	34973	960	30099
	95%	96%	27%	95%	17%	74%

2.2 Compared Parameters

Parameter	Planned	Actual	Parameter	Planned	Actual
Instrument	ACIS	ACIS	Obspar format version number	6	6
Detector	ACIS-235678	ACIS-235678	Obspar file type	PREDICTED	ACTUAL
Grating	NONE	NONE	Obspar update status	NONE	UPDATED
Data mode	VFAINT	VFAINT	On-chip summing requested	N	N
Observation mode	POINTING	POINTING	Subarray requested	NONE	NONE
Pointing RA	215.089396	215.0954510653769	Alternating exposures requested	N	N
Pointing Dec	-17.340296	-17.36689639690103	Primary exposure time	0.000000	3.2
Pointing Roll	251.387040	251.5454687246649			
Window start time	238572064.184000	238572064.184000			
Window stop time	238615264.184000	238615264.184000			
SIM focus pos (mm)	-0.684267	-0.6828225247311905			
SIM defocus (mm)	0	0.001444936568705701			
SIM translation stage pos (mm)	-190.132523	-190.1400660498719			
SIM translation stage offset (mm)	0	0.00754346686406393			
Observation start time	238599432.184000	238599055.79012			
Observation start date	2005-07-24T13:36:08	2005-07-24T13:30:55			
Observation end time	238607432.184000	238608062.46553			
Observation end date	2005-07-24T15:49:28	2005-07-24T16:01:02			
Read mode	TIMED	TIMED			

2.3 Aspect



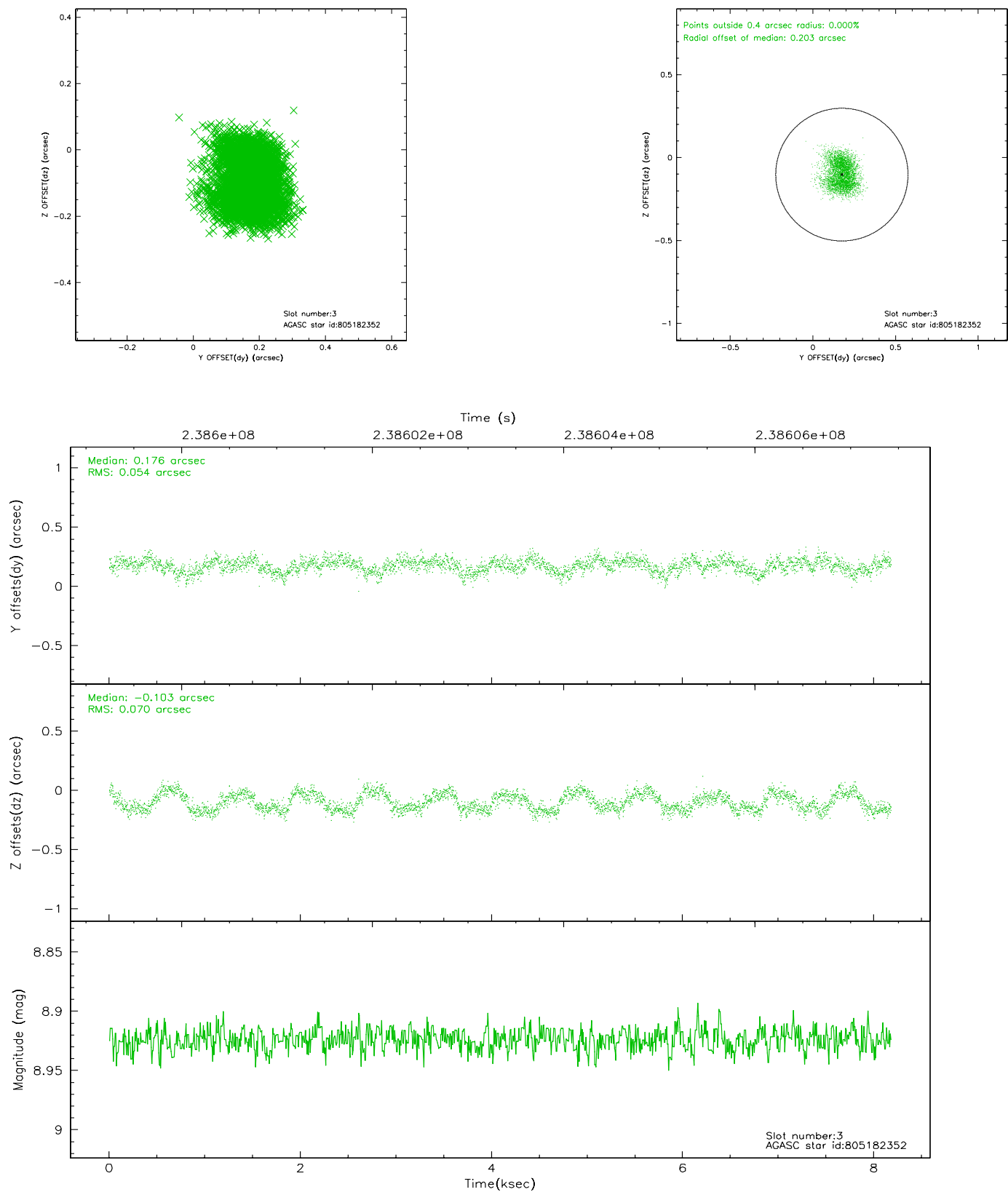


Slot Statistics

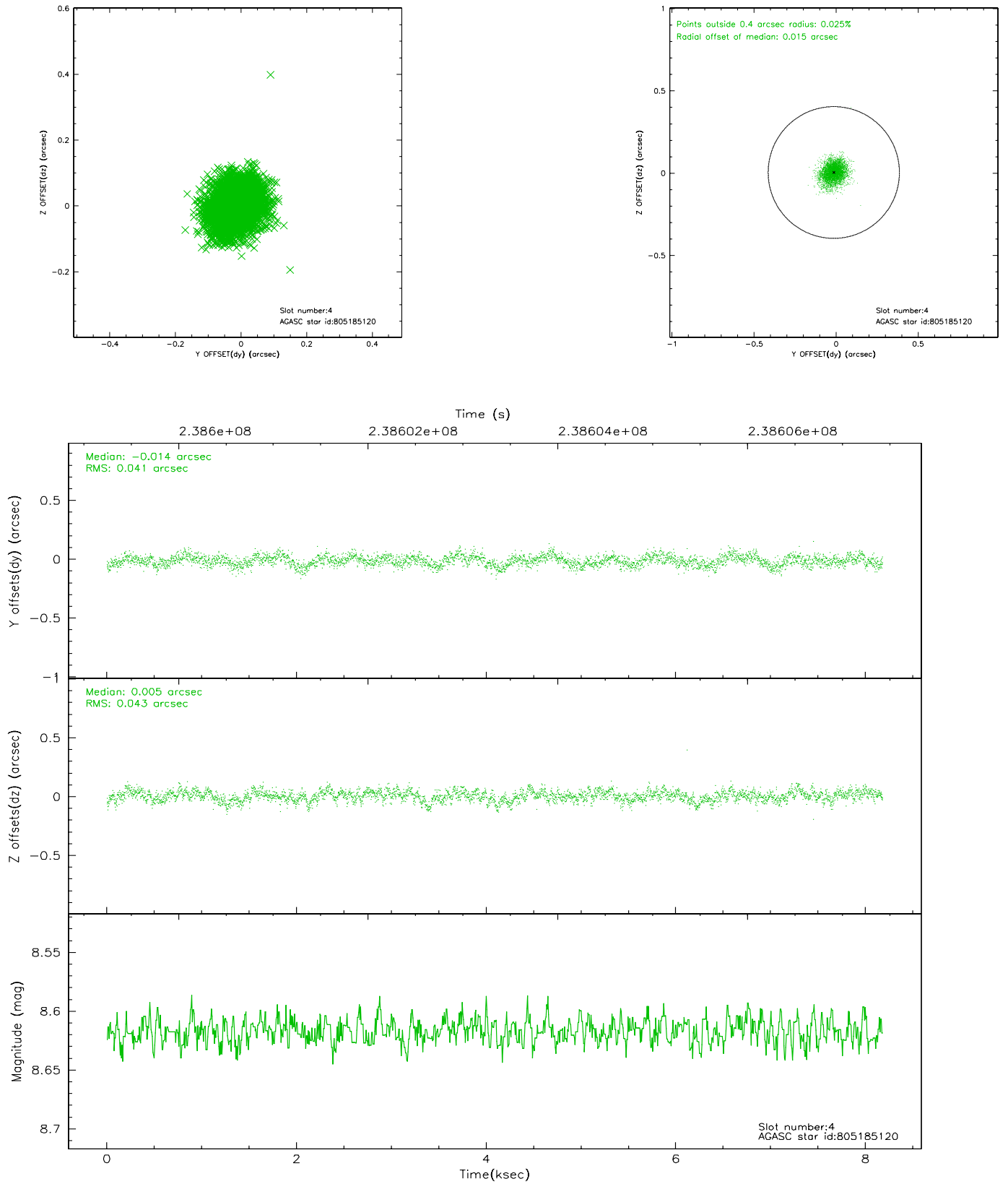
slot	status	id	mag	n_pts	med_dy	med_dz	dr1	dr2	ra	dec	mean_y	mean_z
0	FID	ACIS-S-1	7.18	1995	0.008	-0.030	0.009	0.014	0.000000	0.000000	936.53	-1727.30
1	FID	ACIS-S-2	7.10	1995	-0.061	-0.014	0.006	0.011	0.000000	0.000000	-759.06	-1732.51
2	FID	ACIS-S-4	7.20	1995	0.027	0.049	0.006	0.009	0.000000	0.000000	2153.51	176.22
3	GUIDE	805182352	8.92	3987	0.176	-0.103	0.096	0.145	214.624580	-17.686015	1690.63	-1112.71
4	GUIDE	805185120	8.62	3989	-0.014	0.005	0.064	0.105	215.253528	-17.793163	1366.34	1053.73
5	GUIDE	805187072	8.72	3989	-0.143	-0.021	0.055	0.087	215.513645	-17.149952	-1113.39	1165.33
6	GUIDE	805188160	8.97	3991	-0.084	-0.164	0.077	0.121	215.356854	-16.987214	-1498.13	467.51
7	GUIDE	804653008	9.17	3989	0.069	0.283	0.075	0.121	214.804962	-16.573506	-2302.07	-1810.55

2.4 Star Slots

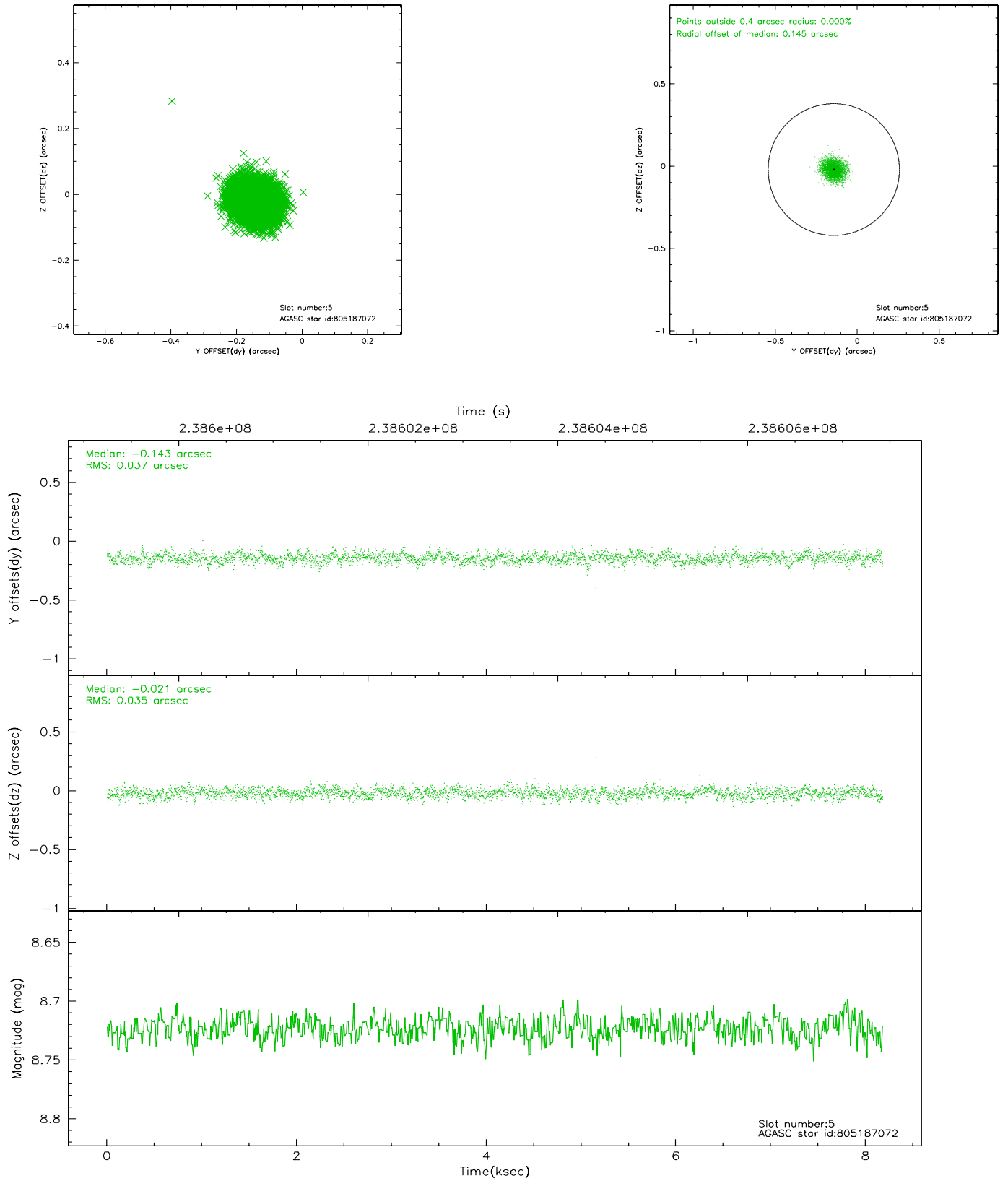
2.4.1 Slot 3



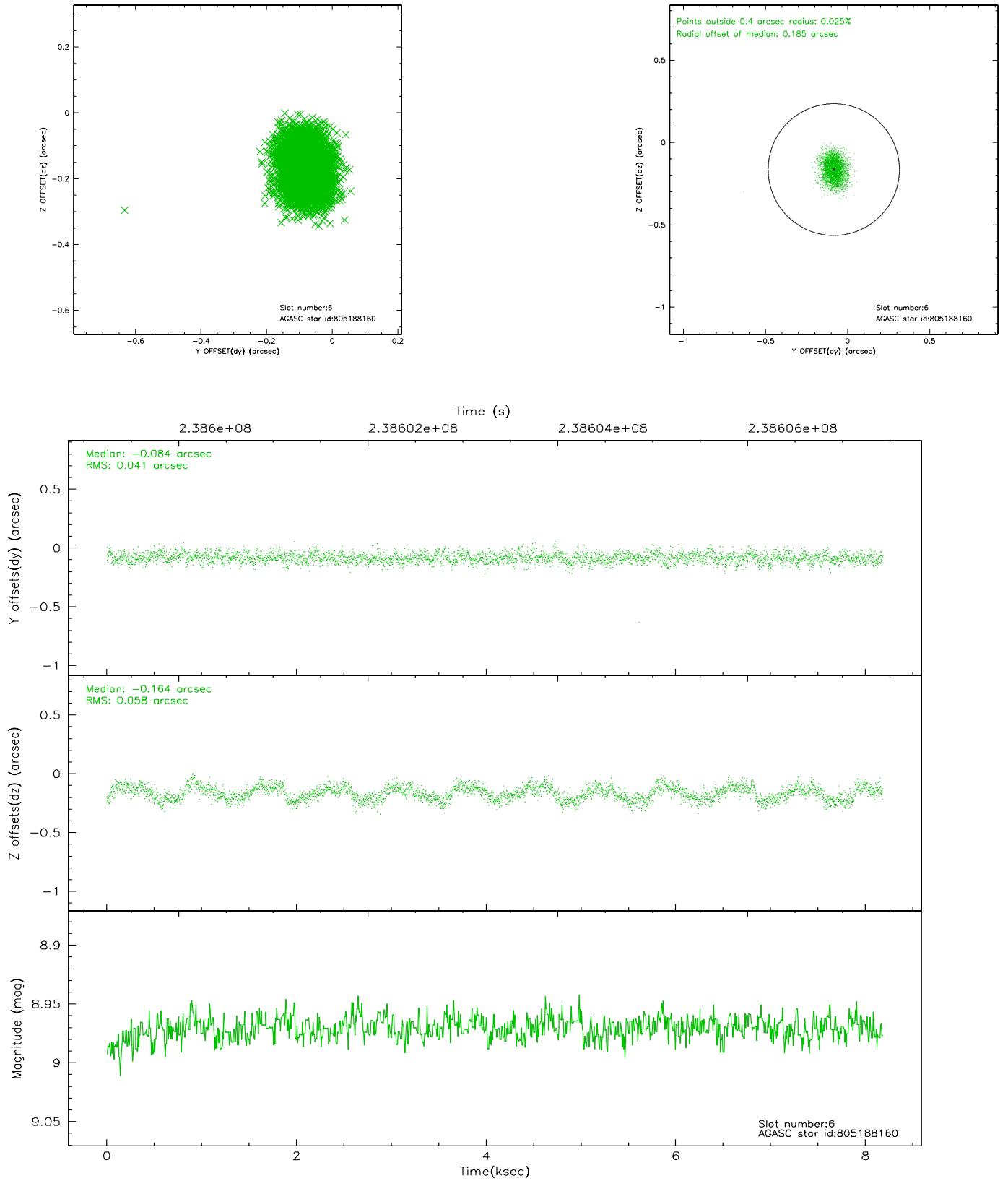
2.4.2 Slot 4



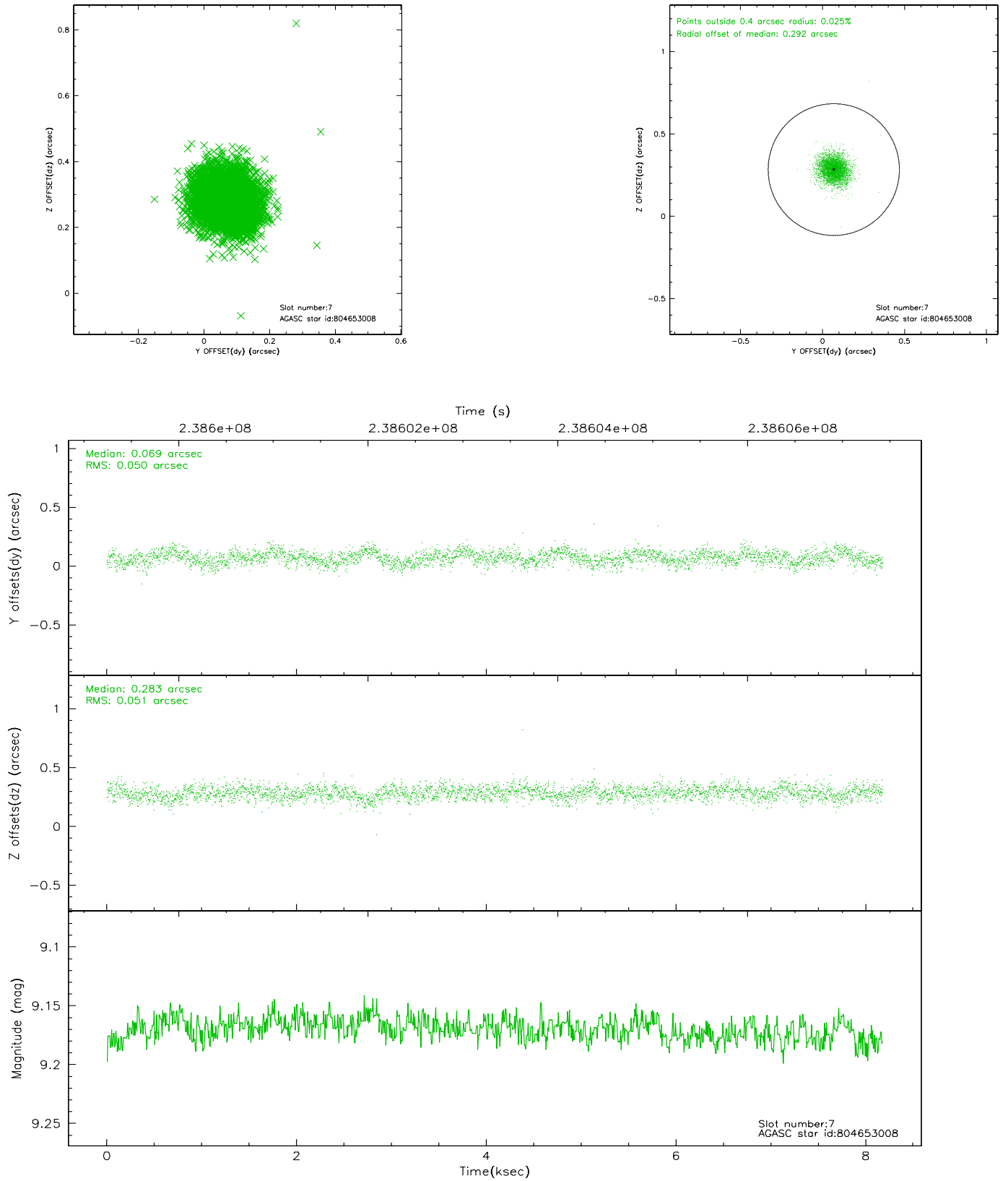
2.4.3 Slot 5



2.4.4 Slot 6

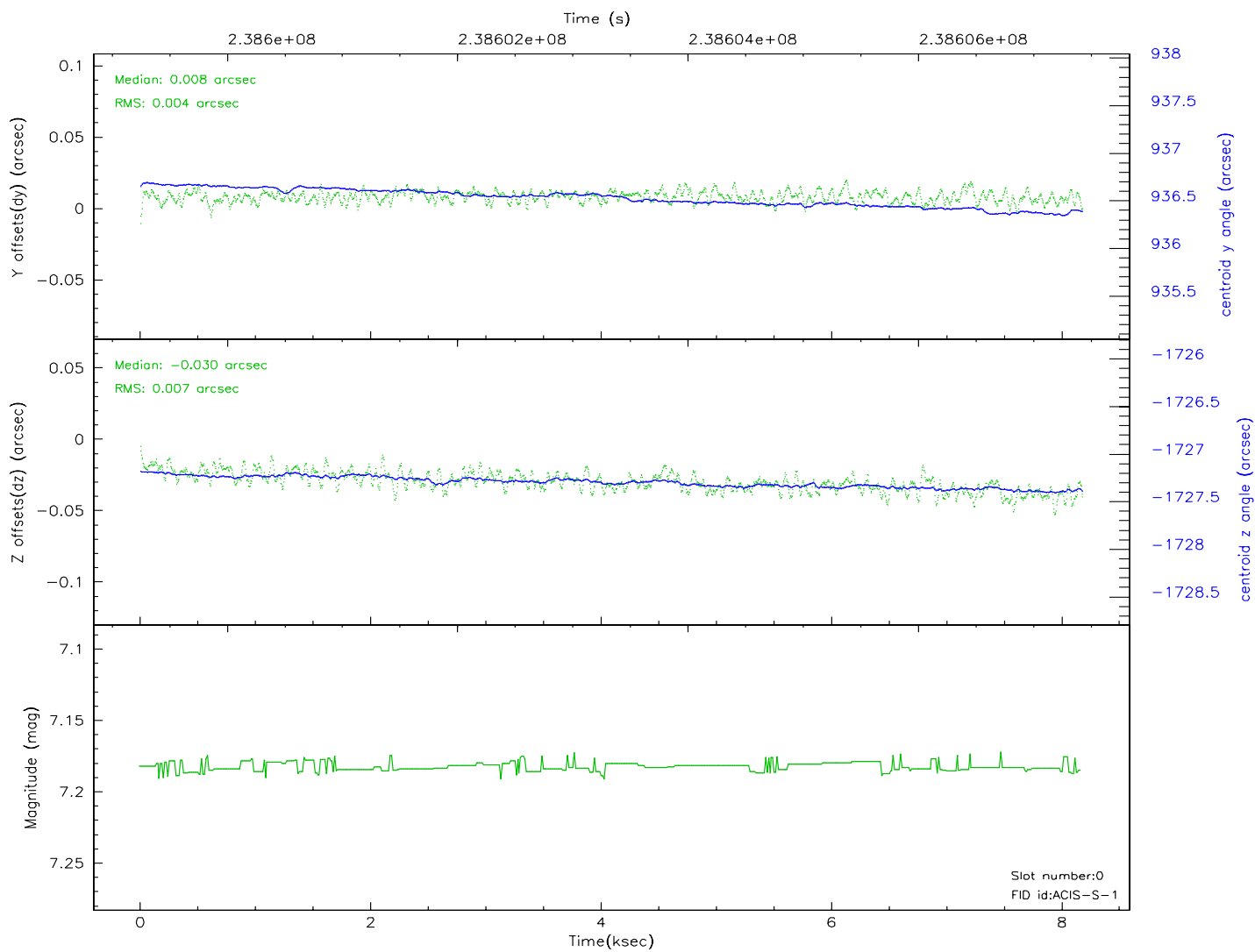
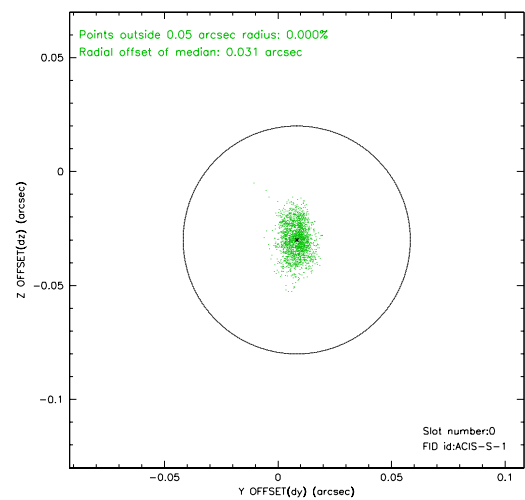
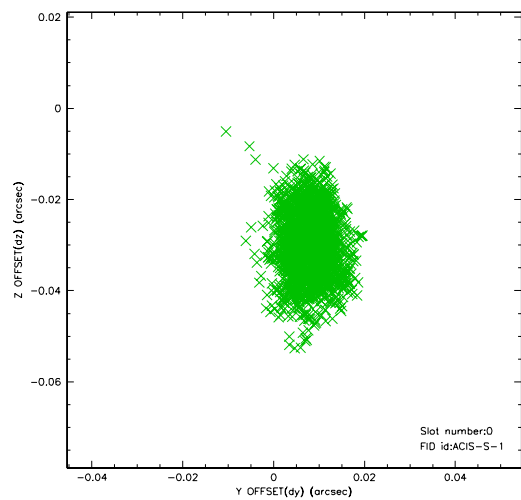


2.4.5 Slot 7

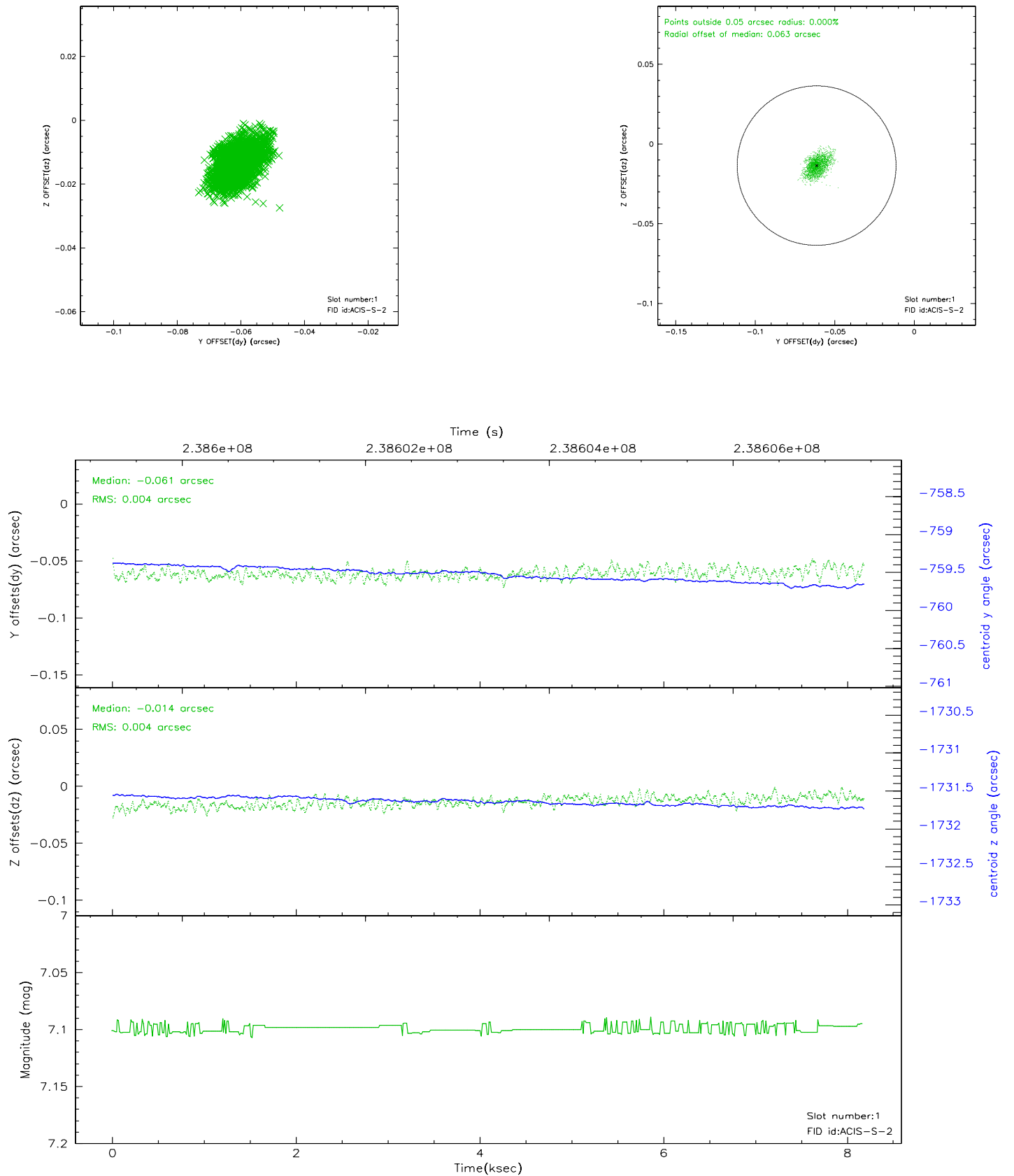


2.5 FID Slots

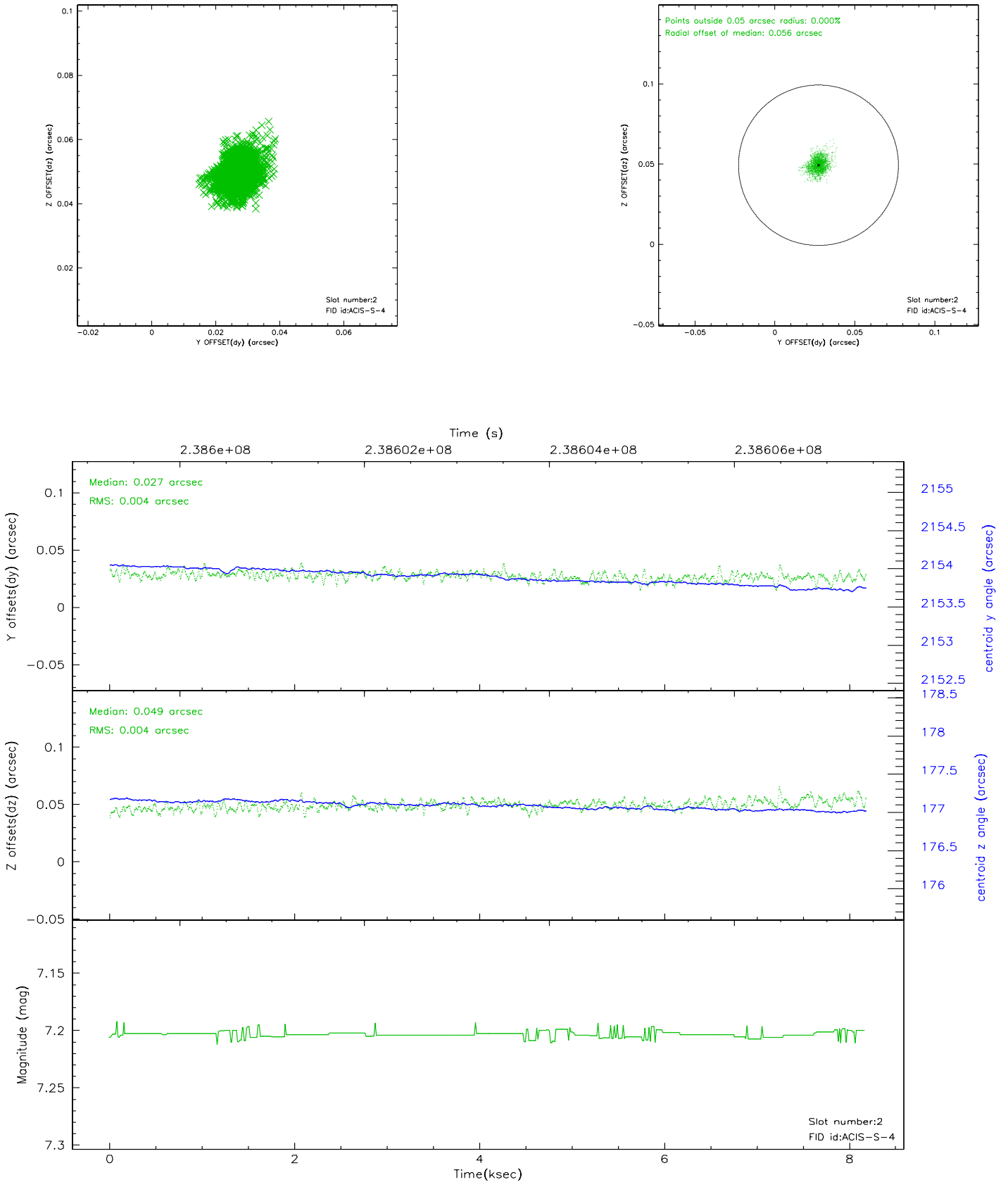
2.5.1 Slot 0



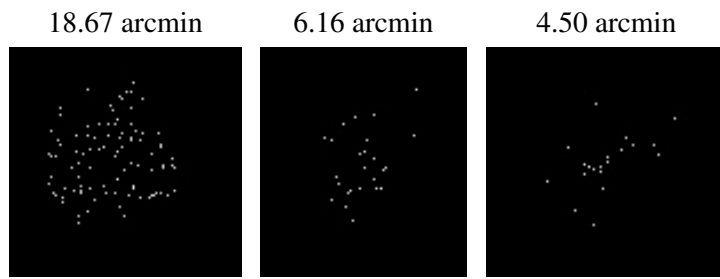
2.5.2 Slot 1



2.5.3 Slot 2



3 Point Sources



A Summary

A.1 Status

V&V Scientist	Beth Sundheim
V&V Date (YYYY-MM-DD)	2006.03.15
V&V Edition	1
V&V Disposition and Status	OK
V&V Charge Time	8.37475

A.2 Comments

Window constraint satisfied.