

V&V Reference Report

L2 ASCDS Version : 7.6.7.1

Observation 6342 - L2 Version 002
Chandra X-Ray Center

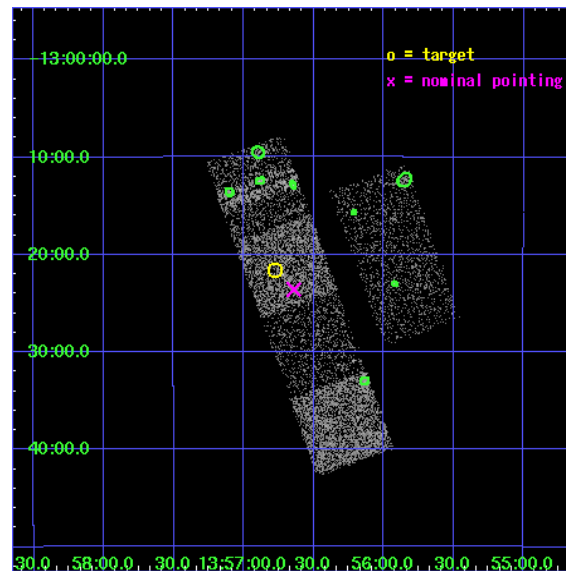
L2 Processing Date : Mar 14 2006

Contents

1	Front	2
2	OBI	3
2.1	OBI	3
2.1.1	Images	3
2.1.2	Bias	3
2.1.3	Parameters	4
2.1.4	Events	4
2.2	Compared Parameters	5
2.3	Aspect	6
2.4	Star Slots	9
2.4.1	Slot 3	9
2.4.2	Slot 4	10
2.4.3	Slot 5	11
2.4.4	Slot 6	12
2.4.5	Slot 7	13
2.5	FID Slots	14
2.5.1	Slot 0	14
2.5.2	Slot 1	15
2.5.3	Slot 2	16
3	Point Sources	17
A	Summary	18
A.1	Status	18
A.2	Comments	18

1 Front

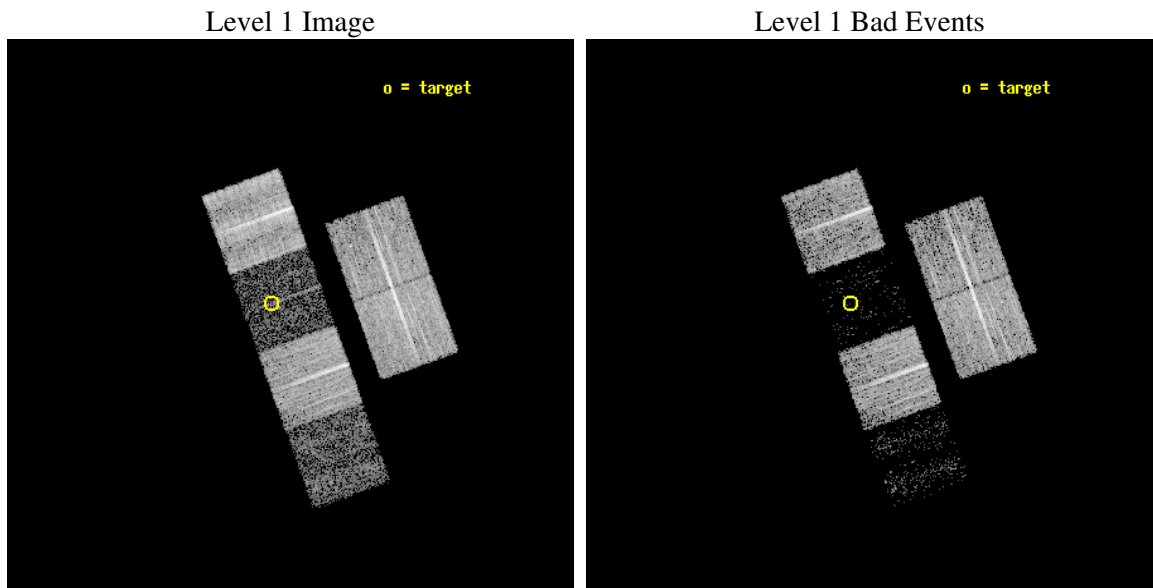
seq_num	100057
obs_id	6342
title	Comet 9P/Tempel 1 During the Deep Impact Encounter
observer	Dr. Carey Lisse
object	9P/Tempel 1
dtcycle	0
cycle	P
ra_targ	209.192981
dec_targ	-13.35923
ra_nom	209.16023362507
dec_nom	-13.39313870587
roll_nom	250.09866788083
revision	2
ontime	8502.3999683261
livetime	8394.7374603965
ontime2	8502.3999683261
ontime3	8495.9180277586
ontime5	8502.3999683261
ontime6	8502.3999683261
ontime7	8502.3999683261
ontime8	8502.3999683261
l2events	13255



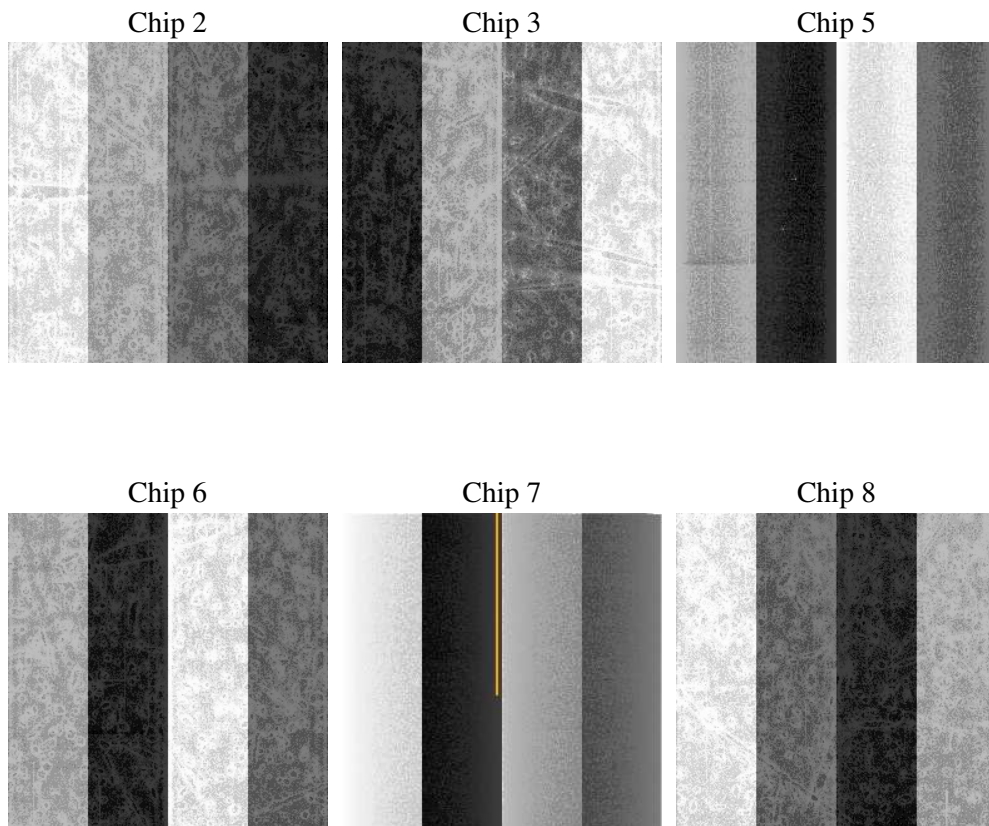
2 OBI

2.1 OBI

2.1.1 Images



2.1.2 Bias



2.1.3 Parameters

obi_num	1
ascdsver	7.6.7.1
caldsver	3.2.1
date	2006-03-14T16:08:51
revision	2

sched_exp_time	8325.000000
ontime	8834.9739042222
ontime2	8834.9739341438
ontime3	8828.4919935763
ontime5	8834.9739042222
ontime6	8834.9739341438
ontime7	8834.9739042222
ontime8	8834.9739341438
l1events	173461

2.1.4 Events

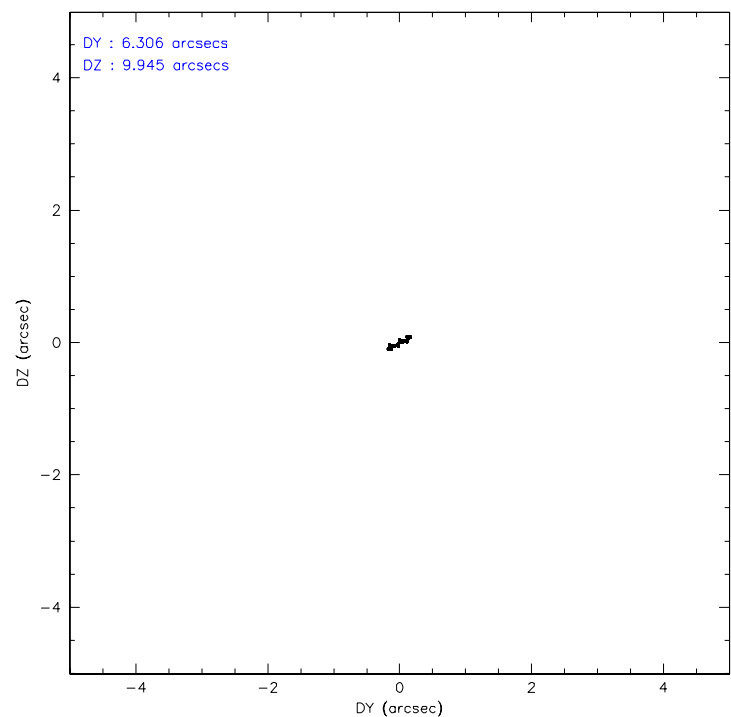
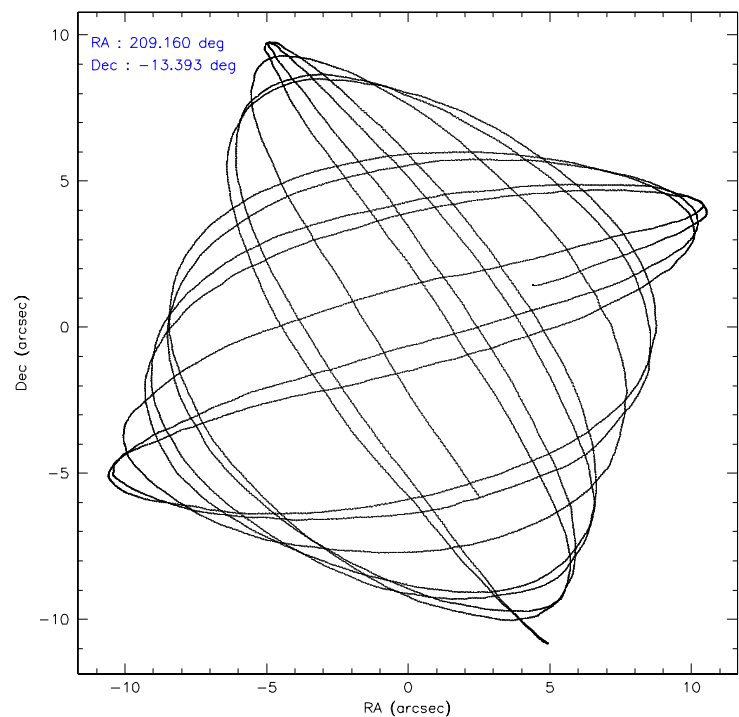
	ccd 2	ccd 3	ccd 5	ccd 6	ccd 7	ccd 8
level 1 events	42830	34981	6738	36893	5232	46787
rejected events	40882	33624	2307	35272	1160	32731
rejected %	95%	96%	34%	95%	22%	69%

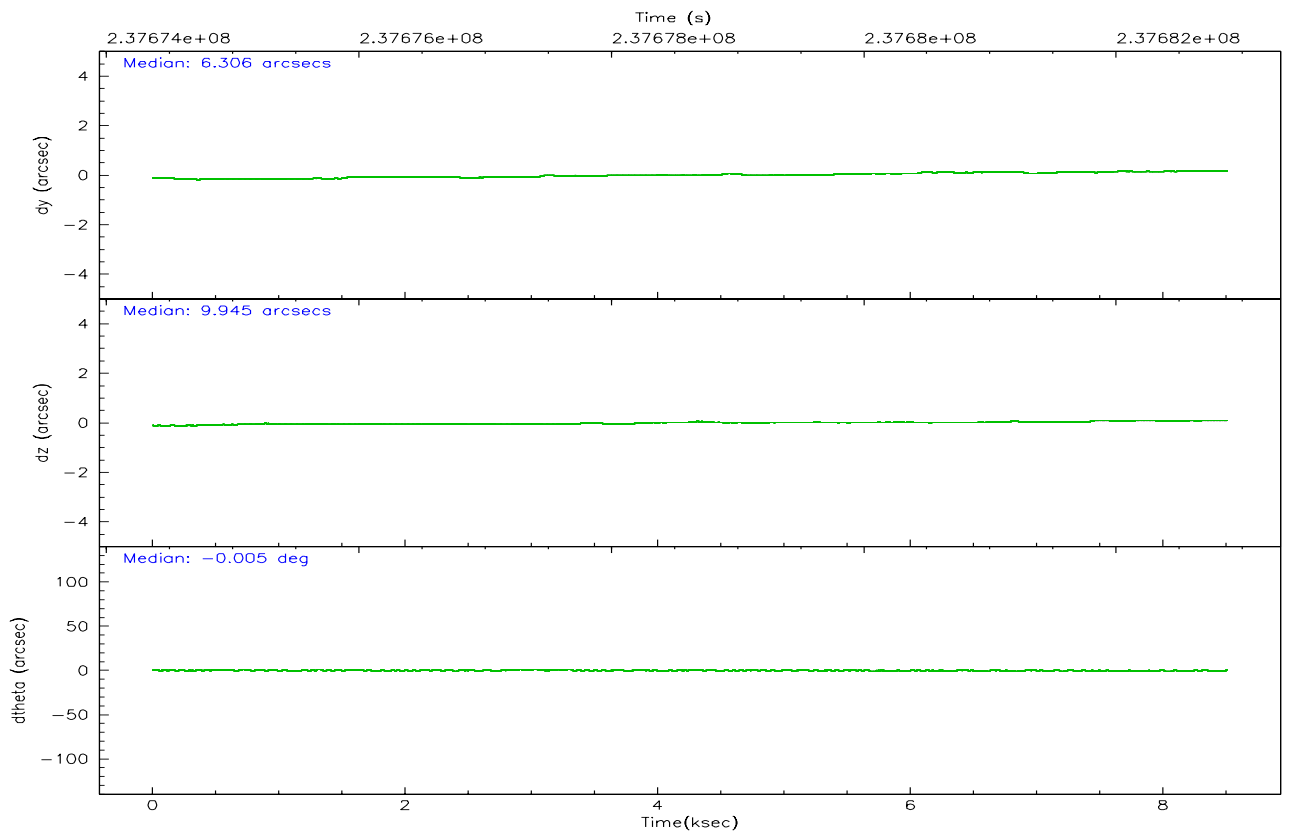
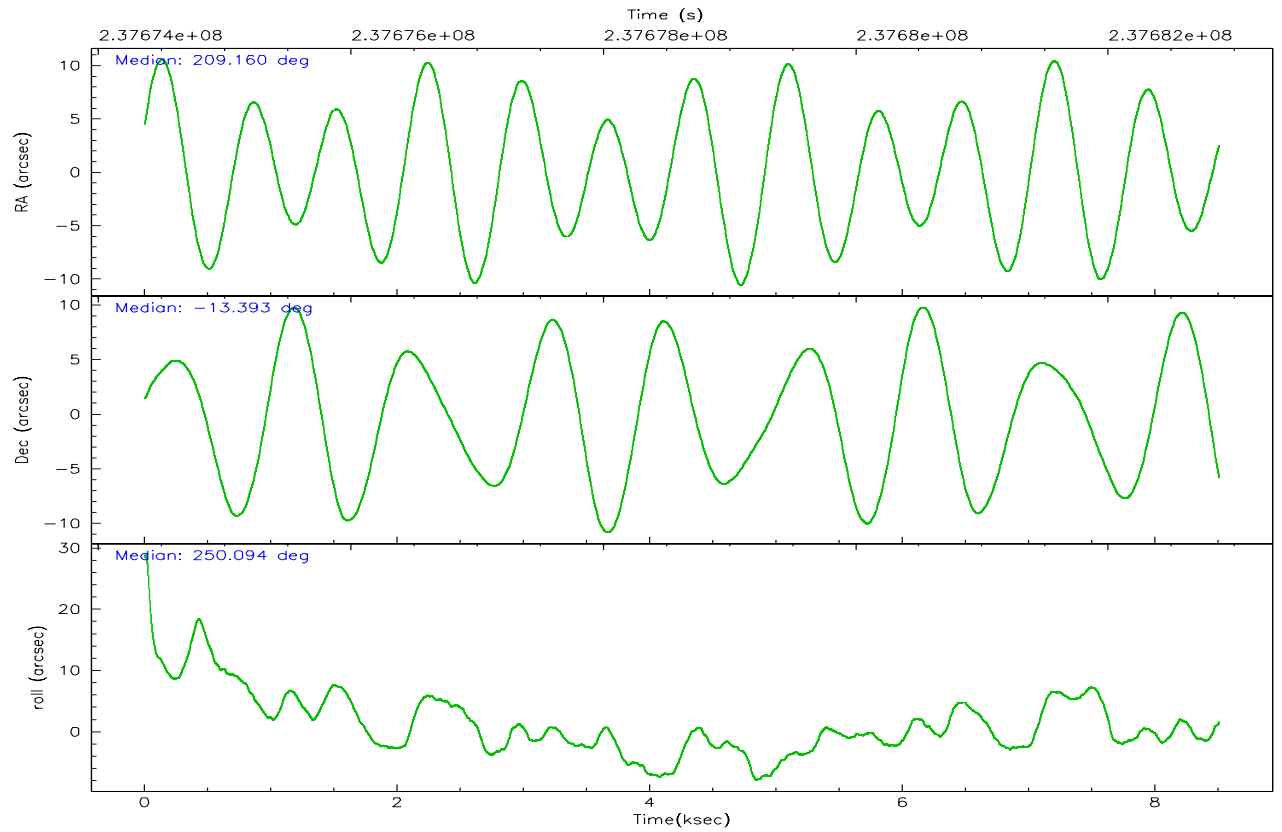
	ccd 2	ccd 3	ccd 5	ccd 6	ccd 7	ccd 8
grade 0 events	869	691	1021	832	1041	3911
	2%	1%	15%	2%	19%	8%
grade 1 events	15	9	13	13	12	44
	0%	0%	0%	0%	0%	0%
grade 2 events	543	188	1832	332	1363	2925
	1%	0%	27%	0%	26%	6%
grade 3 events	189	219	583	215	601	1930
	0%	0%	8%	0%	11%	4%
grade 4 events	257	197	579	198	651	1785
	0%	0%	8%	0%	12%	3%
grade 5 events	57	36	291	30	128	308
	0%	0%	4%	0%	2%	0%
grade 6 events	158	126	597	112	583	3985
	0%	0%	8%	0%	11%	8%
grade 7 events	40742	33515	1822	35161	853	31899
	95%	95%	27%	95%	16%	68%

2.2 Compared Parameters

Parameter	Planned	Actual	Parameter	Planned	Actual
Instrument	ACIS	ACIS	Obspar format version number	6	6
Detector	ACIS-235678	ACIS-235678	Obspar file type	PREDICTED	ACTUAL
Grating	NONE	NONE	Obspar update status	NONE	UPDATED
Data mode	VFAINT	VFAINT	On-chip summing requested	N	N
Observation mode	POINTING	POINTING	Subarray requested	NONE	NONE
Pointing RA	209.154910	209.1602336250705	Alternating exposures requested	N	N
Pointing Dec	-13.366470	-13.39313870587021	Primary exposure time	0.000000	3.2
Pointing Roll	249.940809	250.0986678808326			
Window start time	237708064.184000	237708064.184000			
Window stop time	237751264.184000	237751264.184000			
SIM focus pos (mm)	-0.684267	-0.6828225247311905			
SIM defocus (mm)	0	0.001444936568705701			
SIM translation stage pos (mm)	-190.132523	-190.1400660498719			
SIM translation stage offset (mm)	0	0.00754346686406393			
Observation start time	237674555.184000	237674179.28528			
Observation start date	2005-07-13T20:41:31	2005-07-13T20:36:19			
Observation end time	237682880.184000	237683013.76068			
Observation end date	2005-07-13T23:00:16	2005-07-13T23:03:33			
Read mode	TIMED	TIMED			

2.3 Aspect



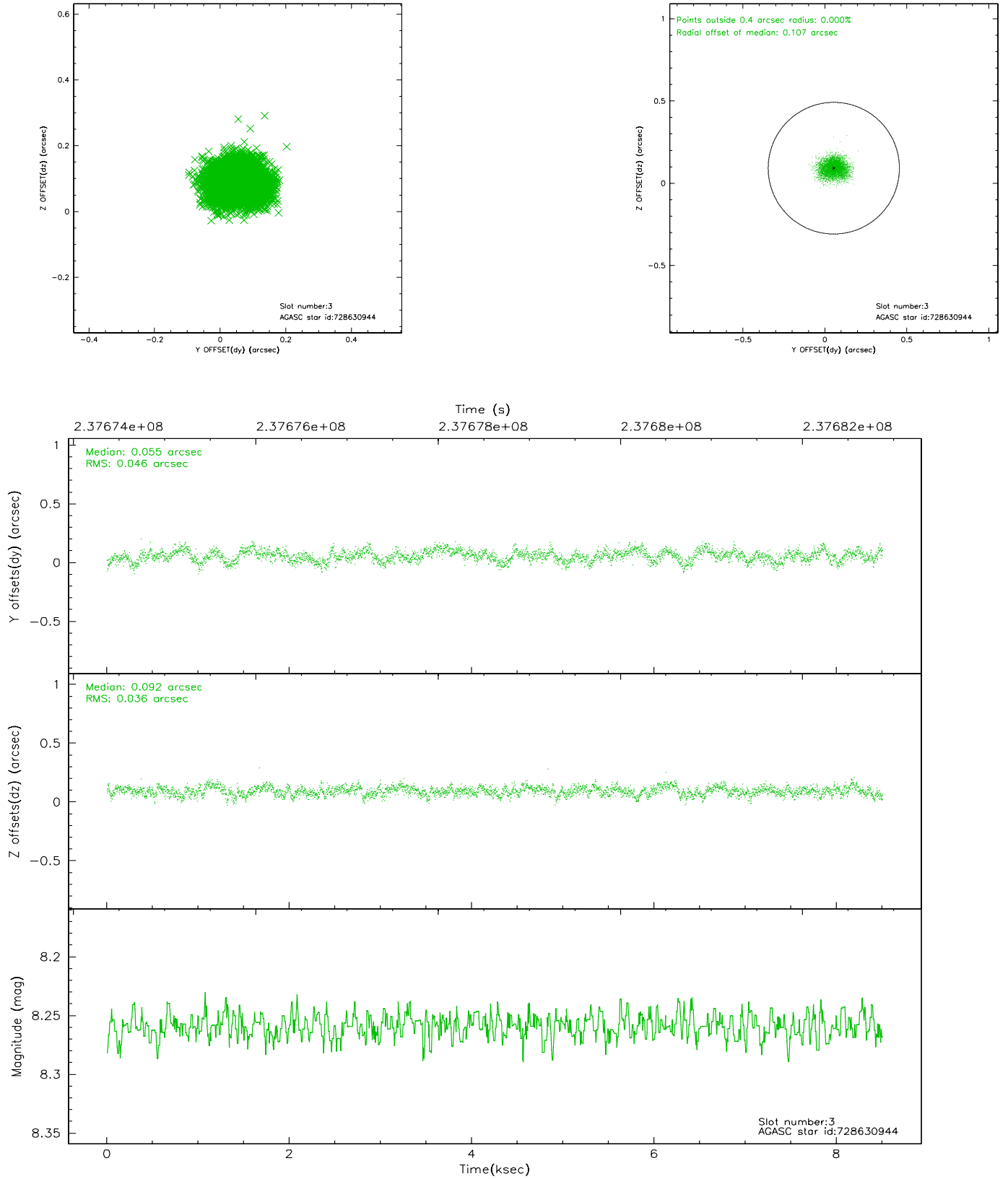


Slot Statistics

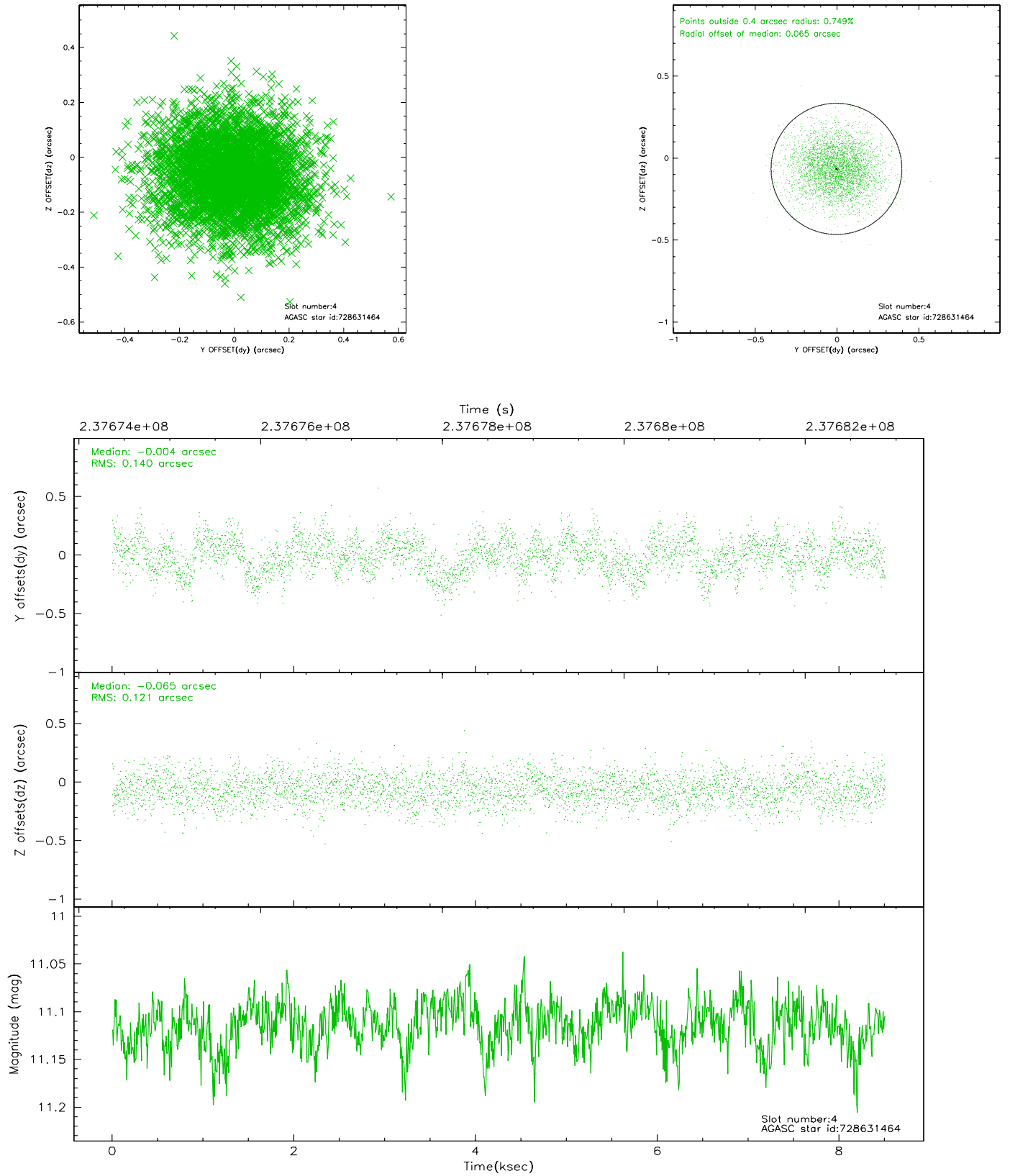
slot	status	id	mag	n_pts	med_dy	med_dz	dr1	dr2	ra	dec	mean_y	mean_z
0	FID	ACIS-S-2	7.10	2075	-0.056	-0.003	0.006	0.011	0.000000	0.000000	-759.06	-1731.20
1	FID	ACIS-S-4	7.21	2075	0.062	0.028	0.005	0.009	0.000000	0.000000	2154.00	176.69
2	FID	ACIS-S-5	7.23	2075	-0.037	-0.016	0.006	0.010	0.000000	0.000000	-1811.08	170.99
3	GUIDE	728630944	8.26	4150	0.055	0.092	0.062	0.100	208.923207	-13.740319	1543.34	-298.95
4	GUIDE	728631464	11.11	4139	-0.004	-0.065	0.197	0.320	208.876674	-12.686242	-1963.55	-1757.92
5	GUIDE	728638600	9.41	4142	-0.044	-0.162	0.087	0.144	209.320543	-13.467304	142.36	668.72
6	GUIDE	728639032	9.16	4149	0.176	0.206	0.076	0.124	209.196450	-13.877558	1679.50	767.99
7	GUIDE	728633480	9.93	4140	-0.183	-0.073	0.115	0.187	208.432486	-13.299426	645.90	-2458.96

2.4 Star Slots

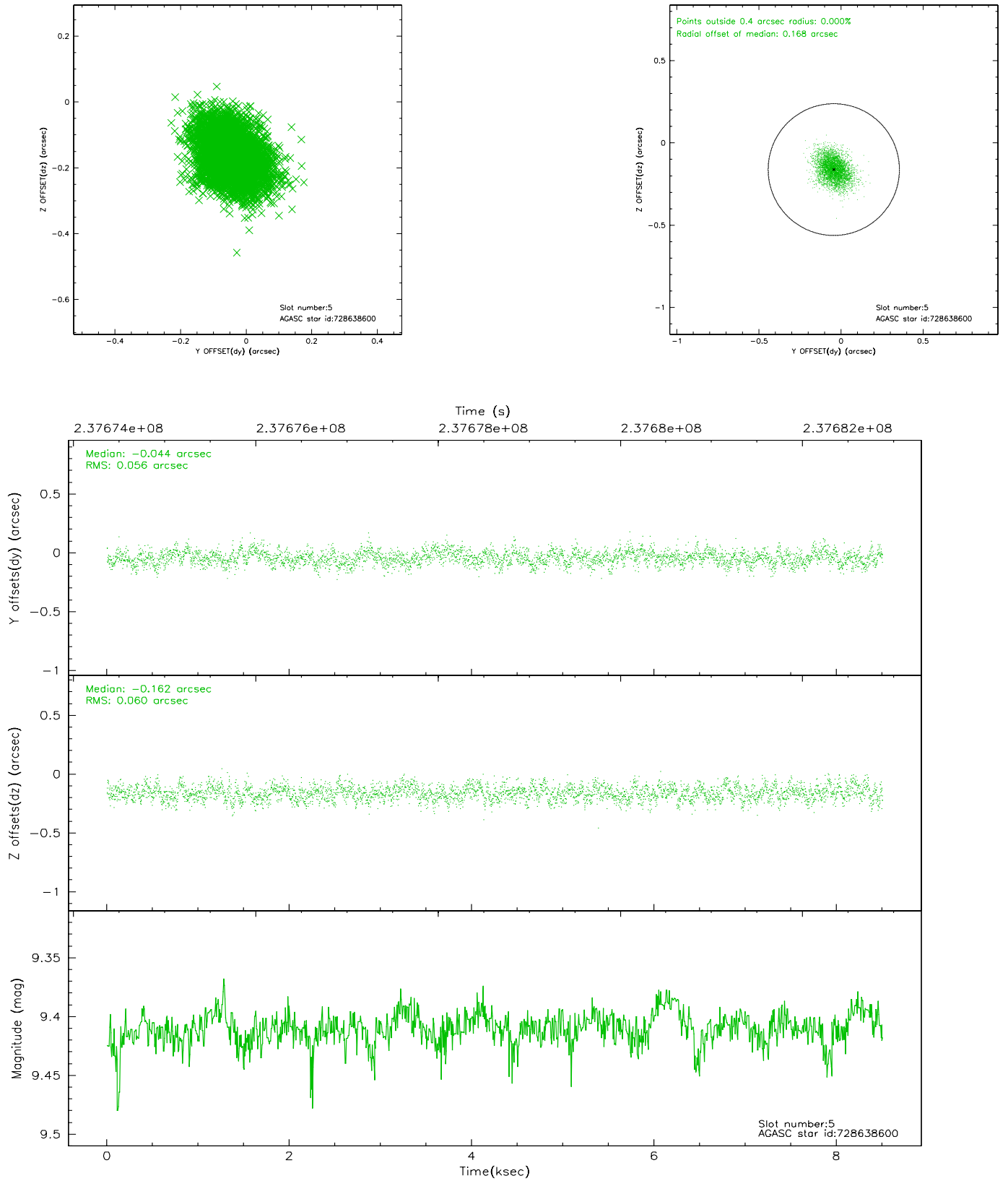
2.4.1 Slot 3



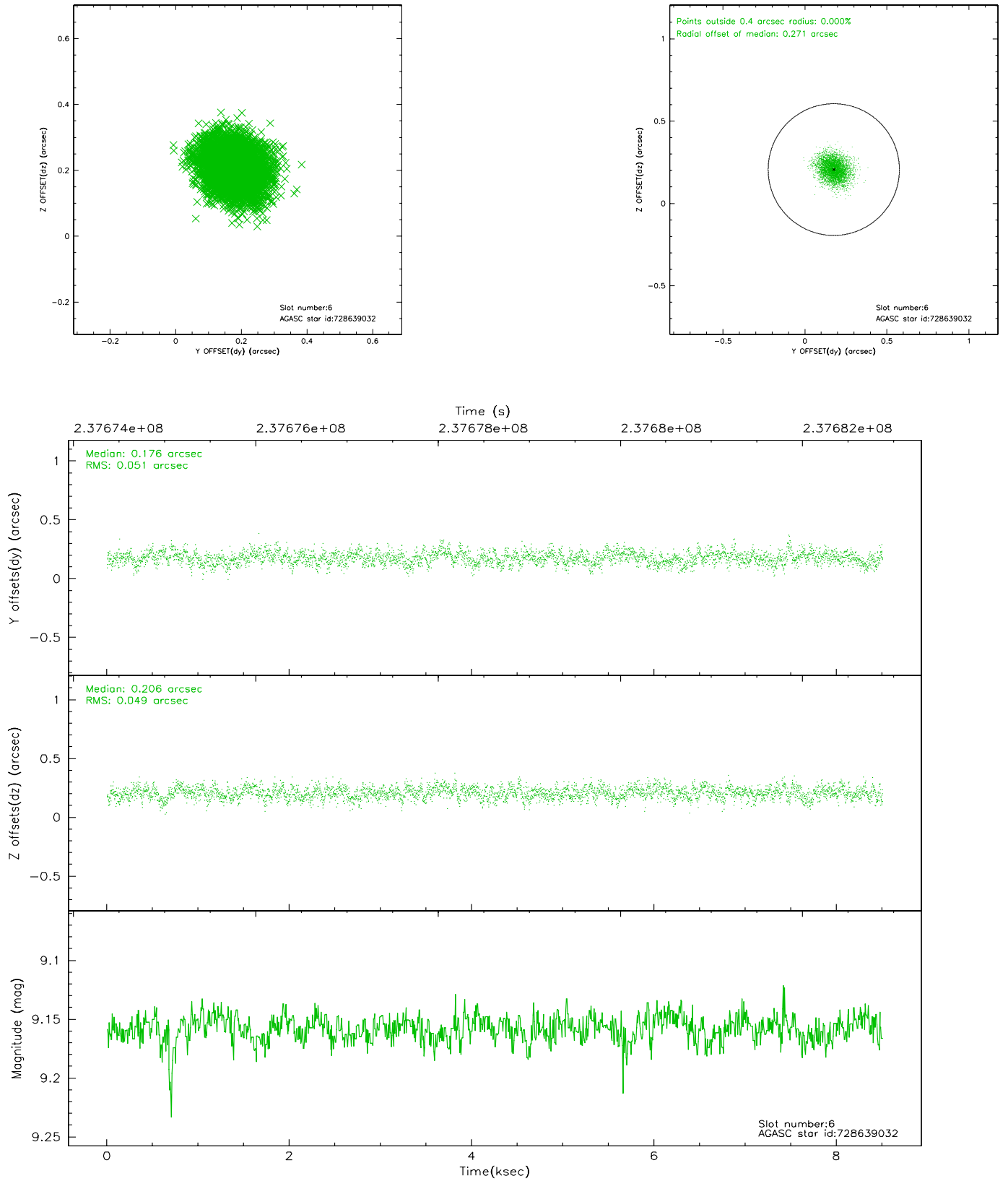
2.4.2 Slot 4



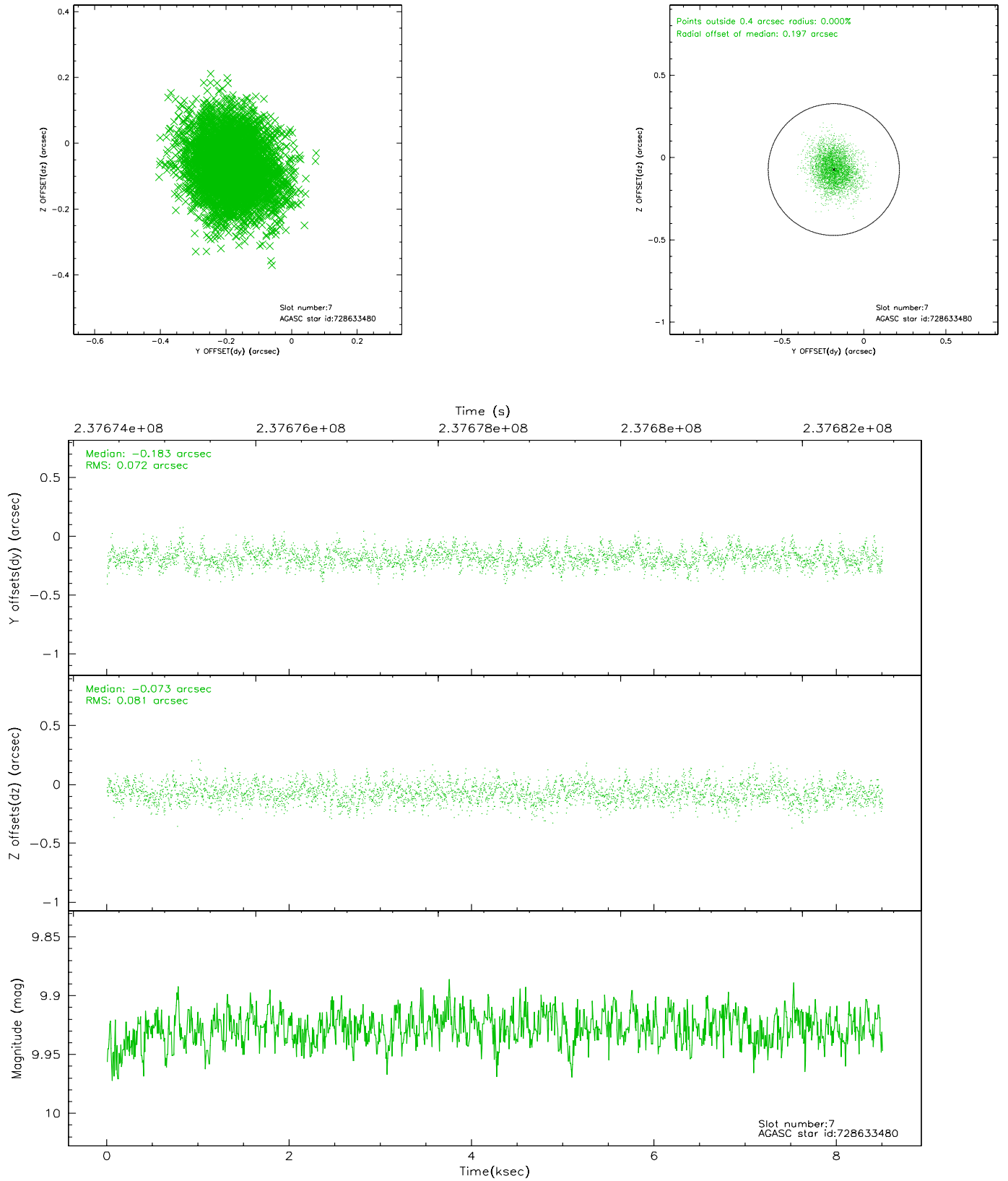
2.4.3 Slot 5



2.4.4 Slot 6

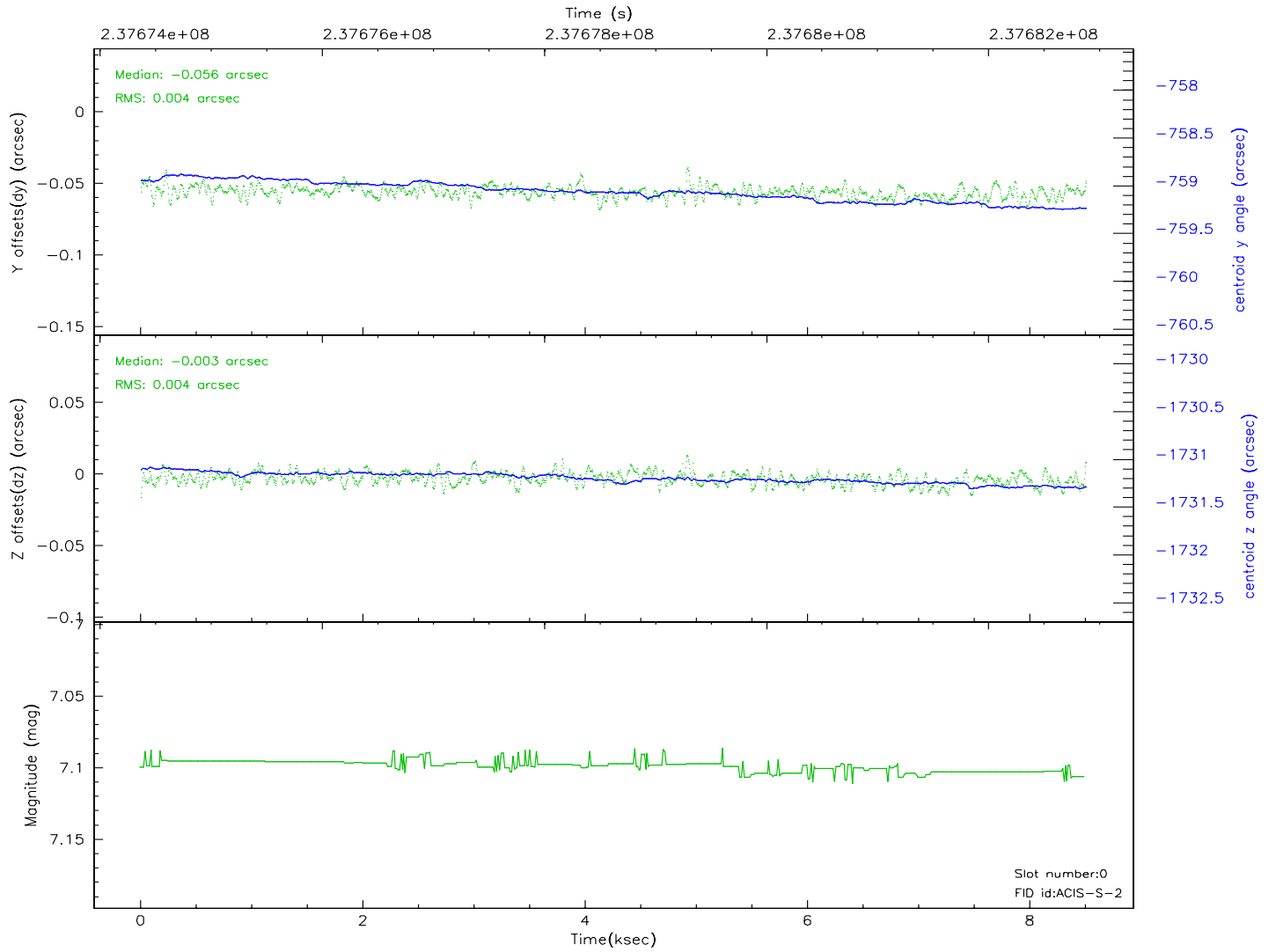
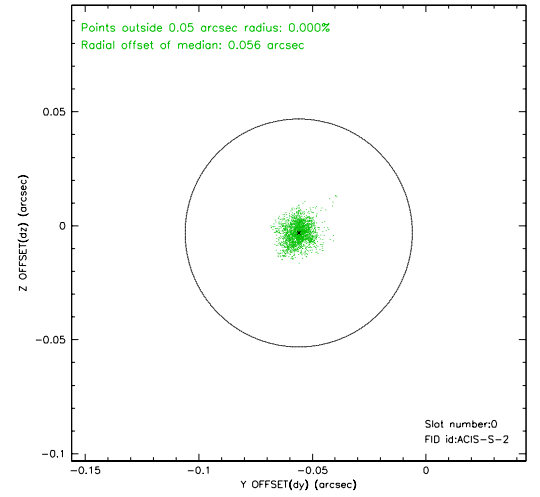
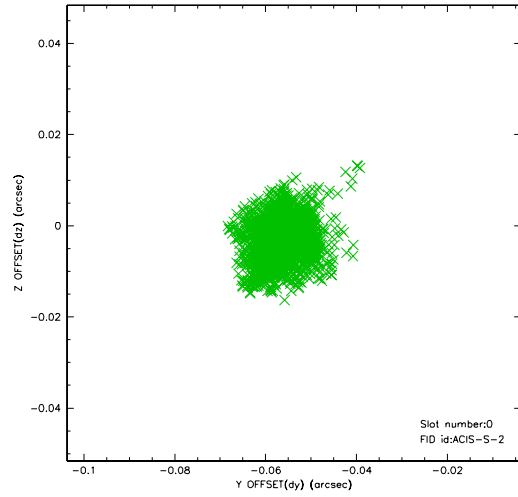


2.4.5 Slot 7

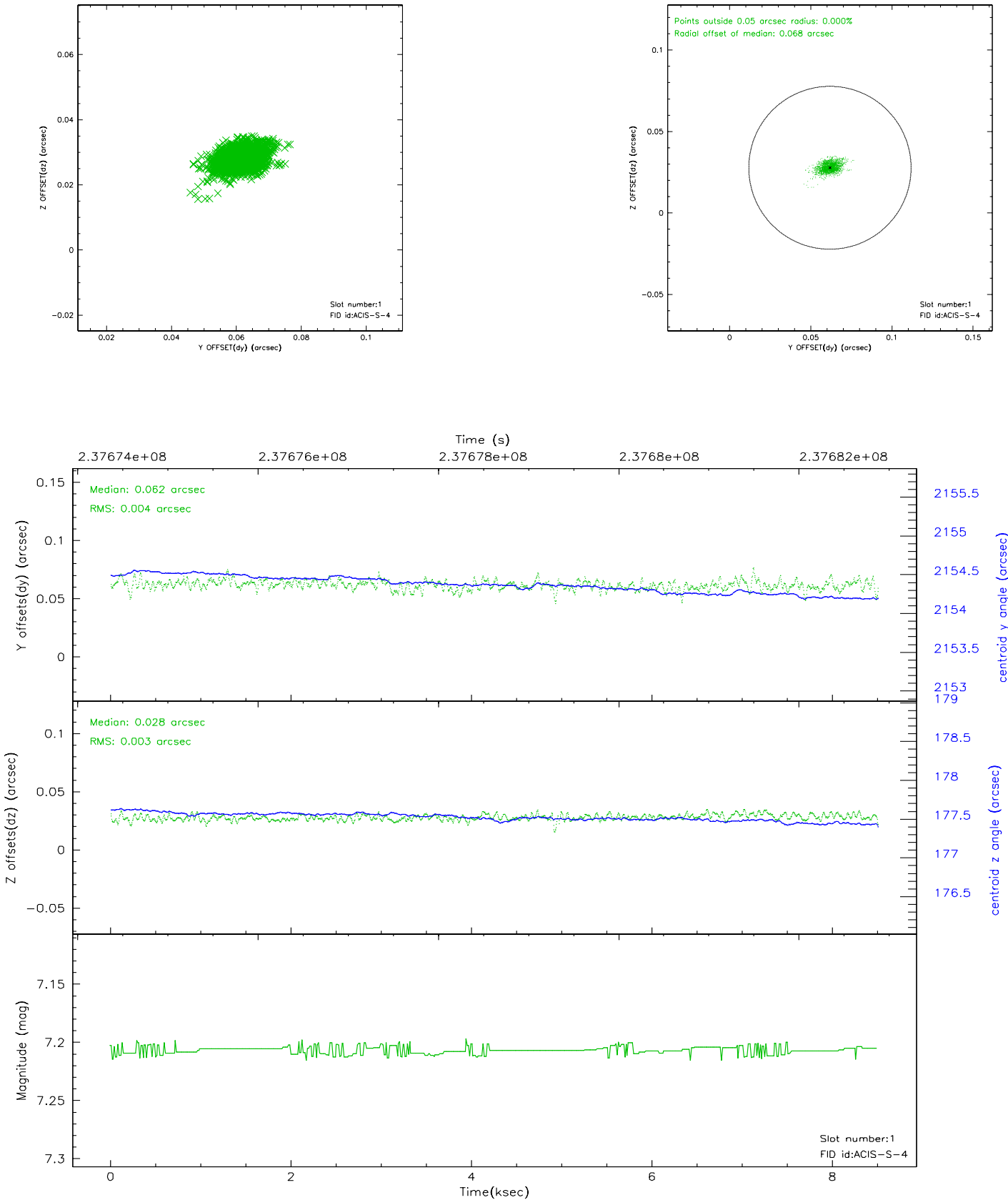


2.5 FID Slots

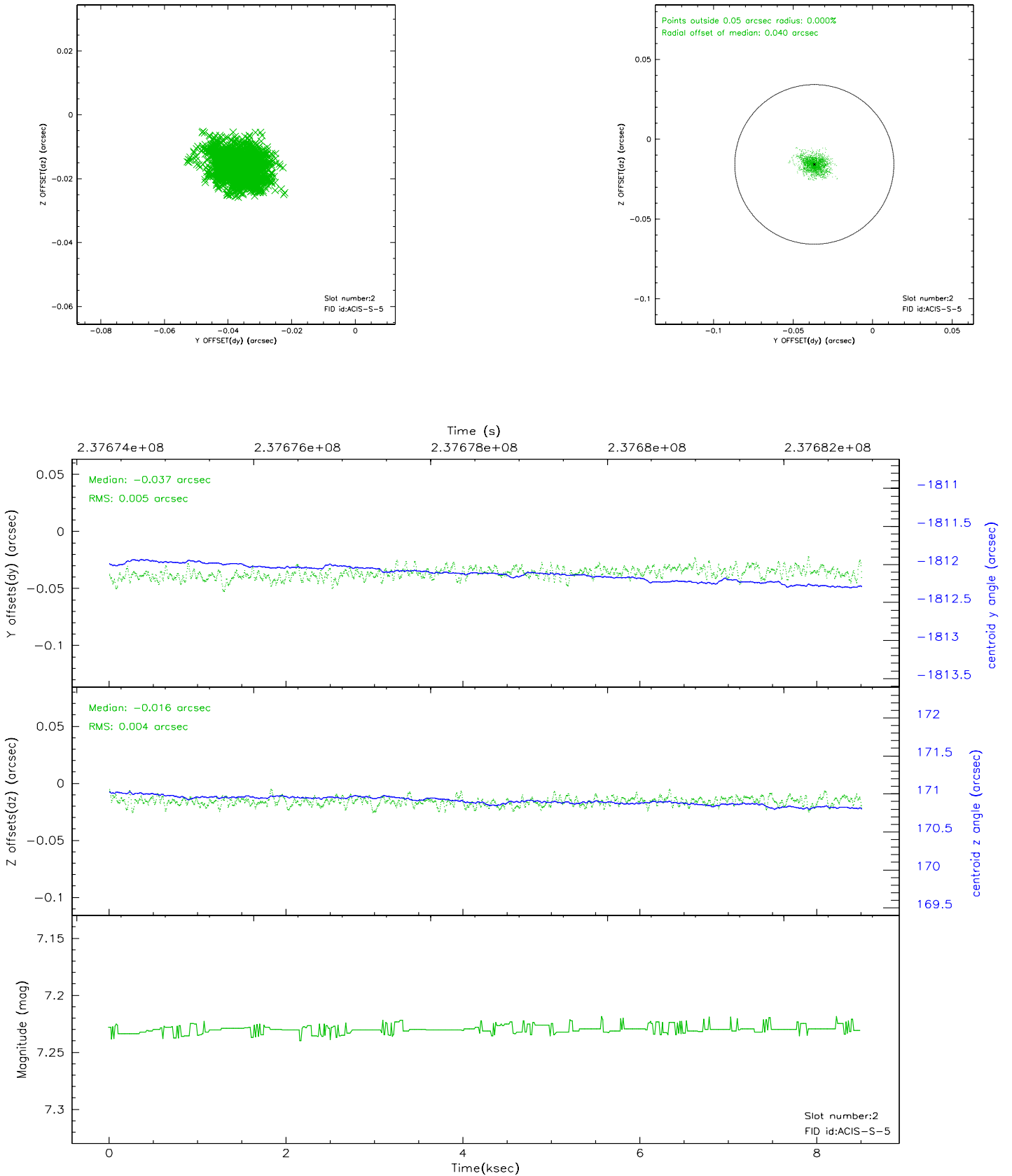
2.5.1 Slot 0



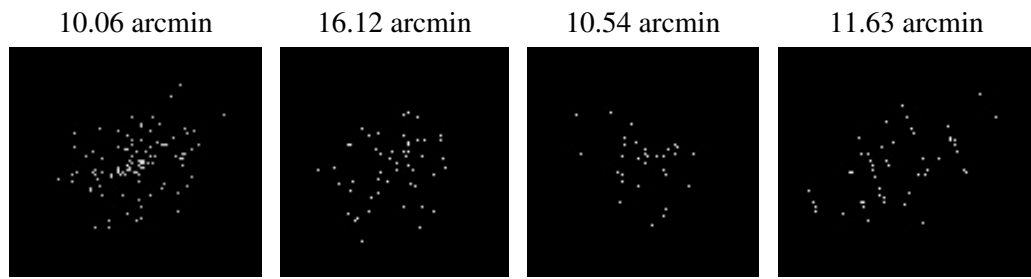
2.5.2 Slot 1



2.5.3 Slot 2



3 Point Sources



A Summary

A.1 Status

V&V Scientist	Beth Sundheim
V&V Date (YYYY-MM-DD)	2006.03.14
V&V Edition	1
V&V Disposition and Status	OK
V&V Charge Time	8.502399

A.2 Comments

Window constraint not satisfied.