

V&V Reference Report

L2 ASCDS Version : 8.1.1

Observation 62322 - L2 Version 4

Chandra X-Ray Center

L2 Processing Date : Nov 21 2009

Contents

1	Front	2
2	OBI	3
2.1	OBI	3
2.1.1	Images	3
2.1.2	Bias	3
2.1.3	Parameters	4
2.1.4	Events	4
2.2	Compared Parameters	5
2.3	Star Slots	6
2.4	FID Slots	6
A	Summary	7
A.1	Status	7
A.2	Comments	7

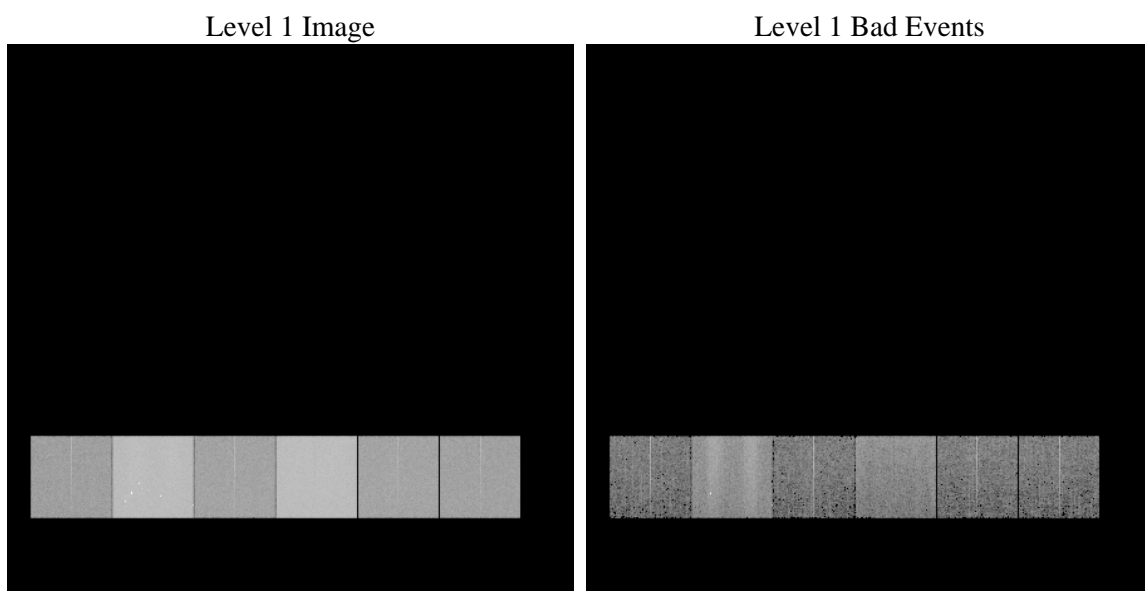
1 Front

seq_num	 	Sequence number
obs_id	62322	Observation id
title	ACIS-456789 diagnostics	Proposal title
observer	CHANDRA engineering request/realtime commanding	Principal investig
object	 	Source name
dtcycle	0	
cycle	P	events from which exps? Prim/Second/Both
ra_targ	0.0	Observer's specified target RA
dec_targ	0.0	Observer's specified target Dec
ra_nom	141.78658531158	Nominal RA
dec_nom	39.676114135482	Nominal Dec
roll_nom	70.964238298383	Nominal Roll
revision	4	Processing version of data
ontime	3975.5465724468	Sum of GTIs [s]
livetime	3925.2058079597	Livetime [s]
ontime4	1484.2802820057	Sum of GTIs [s]
ontime5	4257.5129734129	Sum of GTIs [s]
ontime6	1652.7732724771	Sum of GTIs [s]
ontime7	3975.5465724468	Sum of GTIs [s]
ontime8	1672.3016423732	Sum of GTIs [s]
ontime9	1581.3472723365	Sum of GTIs [s]
l2events	1273136	Number of level 2 events

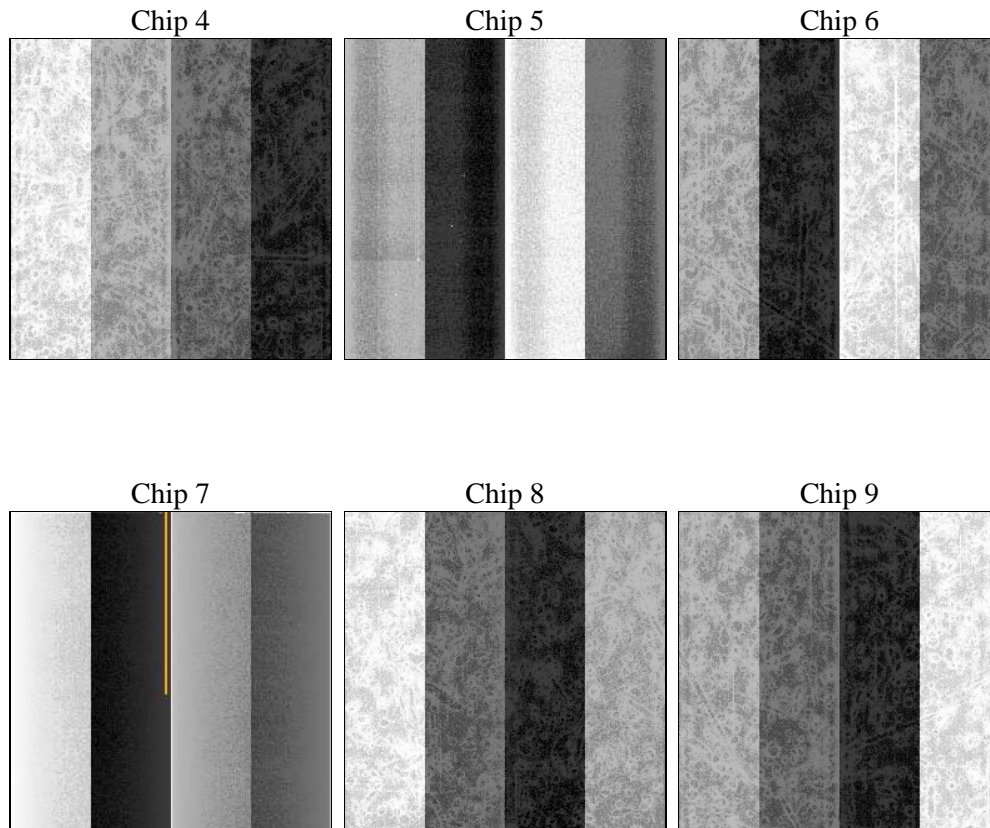
2 OBI

2.1 OBI

2.1.1 Images



2.1.2 Bias



2.1.3 Parameters

obi_num	0	Obi number		
ascdsver	8.1.1	ASCDS version number	sched_exp_time	0.0
caldsver	4.1.4	 		
date	2009-11-21T13:20:02	Date and time of file creation	ontime	3975.5465724468
revision	3	Processing version of data	ontime4	1484.2802820057
			ontime5	4257.5129734129
			ontime6	1652.7732724771
			ontime7	3975.5465724468
			ontime8	1672.3016423732
			ontime9	1581.3472723365
			l1events	1519485

2.1.4 Events

	ccd 4	ccd 5	ccd 6	ccd 7	ccd 8	ccd 9		ccd 4	ccd 5	ccd 6	ccd 7	ccd 8	ccd 9
level 1 events	151585	418775	177155	424773	182048	165149	grade 0 events	29308	39344	41488	68768	54633	43593
rejected events	27151	72831	27788	47057	27851	26633		19%	9%	23%	16%	30%	26%
rejected %	17%	17%	15%	11%	15%	16%	grade 1 events	134	178	171	177	224	181
								0%	0%	0%	0%	0%	0%
							grade 2 events	67698	135430	71315	106736	62181	61518
								44%	32%	40%	25%	34%	37%
							grade 3 events	2924	18529	4354	32755	5839	4501
								1%	4%	2%	7%	3%	2%
							grade 4 events	2909	15940	4209	29815	5833	4462
								1%	3%	2%	7%	3%	2%
							grade 5 events	1271	6947	1532	6131	1604	1369
								0%	1%	0%	1%	0%	0%
							grade 6 events	23218	140925	29746	144054	27776	26136
								15%	33%	16%	33%	15%	15%
							grade 7 events	24123	61482	24340	36337	23958	23389
								15%	14%	13%	8%	13%	14%

2.2 Compared Parameters

Parameter	Planned	Actual	Parameter	Planned	Actual
Instrument	ACIS	ACIS	Obspar format version number	6	6
Detector	ACIS-456789	ACIS-456789	Obspar file type	PREDICTED	ACTUAL
Grating	NONE	NONE	Obspar update status	NONE	UPDATED
Data mode	FAINT	FAINT	On-chip summing requested	N	N
Observation mode	SECONDARY	SECONDARY	Subarray requested	NONE	NONE
Pointing RA	0	141.7865853115819	Alternating exposures requested	N	N
Pointing Dec	0	39.67611413548185	Primary exposure time	3.2	3.2
Pointing Roll	0.0	70.96423829838277			
SIM focus pos (mm)	-0.684267	-0.6828225247311905			
SIM defocus (mm)	0	0.8505141146731063			
SIM translation stage pos (mm)	-190.132523	250.466033080201			
SIM translation stage offset (mm)	0	-0.01005468664627074			
Observation start time	58288950.805844	58288950.037365			
Observation start date	1999-11-06T15:22:31	1999-11-06T15:22:30			
Observation end time	58298751.856198	58298751.087719			
Observation end date	1999-11-06T18:05:52	1999-11-06T18:05:51			
Read mode	TIMED	TIMED			

2.3 Star Slots

2.4 FID Slots

A Summary

A.1 Status

V&V Scientist	Beth Sundheim
V&V Date (YYYY-MM-DD)	2010.08.12
V&V Edition	1
V&V Disposition and Status	OK
V&V Charge Time	3.9755465724468

A.2 Comments

This observation was acquired with the focal plane temperature raised from -120C to -110C, for attempted recalibration of ACIS for the 1999-09-16 through 2000-01-28 period. This reprocessing of the data applies no CTI correction because none is available for that temperature.