

V&V Reference Report

L2 ASCDS Version : 8.4.5

Observation 62132 - L2 Version 4
Chandra X-Ray Center

L2 Processing Date : Aug 24 2012

Contents

1	Front	2
2	OBI	3
2.1	OBI	3
2.1.1	Images	3
2.1.2	Bias	3
2.1.3	Parameters	4
2.1.4	Events	4
2.2	Compared Parameters	5
2.3	Star Slots	6
2.4	FID Slots	6
A	Summary	7
A.1	Status	7
A.2	Comments	7

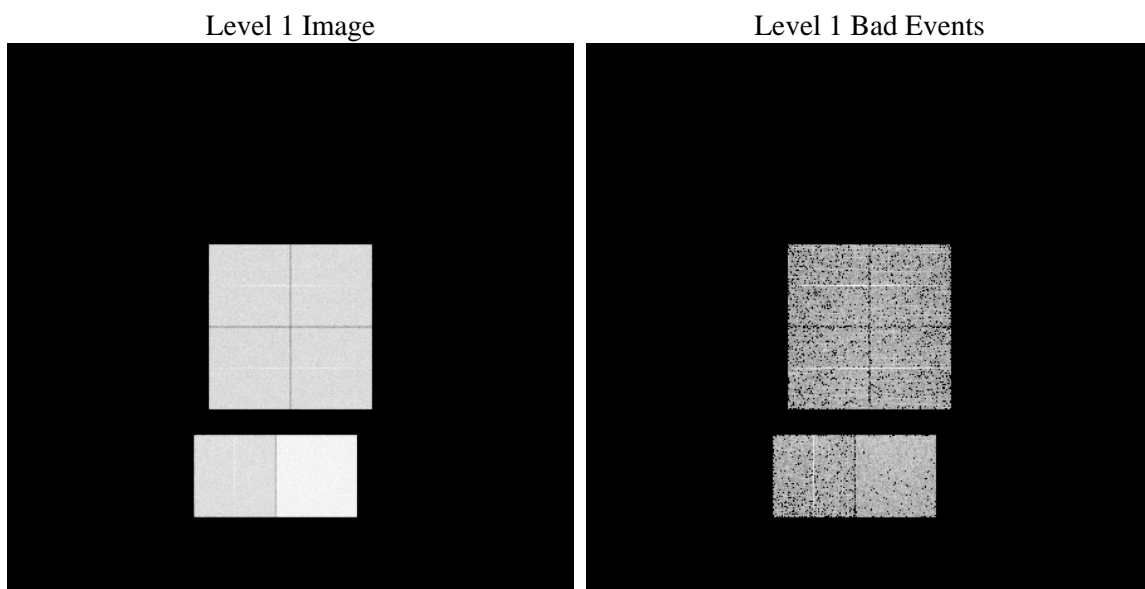
1 Front

seq_num	 	Sequence number
obs_id	62132	Observation id
title	ACIS-012367 diagnostics	Proposal title
observer	CHANDRA engineering request/realtime commanding	Principal investig
object	 	Source name
dtcycle	0	
cycle	P	events from which exps? Prim/Second/Both
ra_targ	0.0	Observer's specified target RA [deg]
dec_targ	0.0	Observer's specified target Dec [deg]
ra_nom	257.3857691289	Nominal RA [deg]
dec_nom	-30.902498608165	Nominal Dec [deg]
roll_nom	85.009400535135	Nominal Roll [deg]
revision	4	Processing version of data
ontime	3549.1315461099	Sum of GTIs [s]
livetime	3504.1903054426	Livetime [s]
ontime0	1471.1825291067	Sum of GTIs [s]
ontime1	1477.7057388276	Sum of GTIs [s]
ontime2	1403.5831828117	Sum of GTIs [s]
ontime3	1435.4490989447	Sum of GTIs [s]
ontime6	1562.0547090322	Sum of GTIs [s]
ontime7	3549.1315461099	Sum of GTIs [s]
l2events	930287	Number of level 2 events

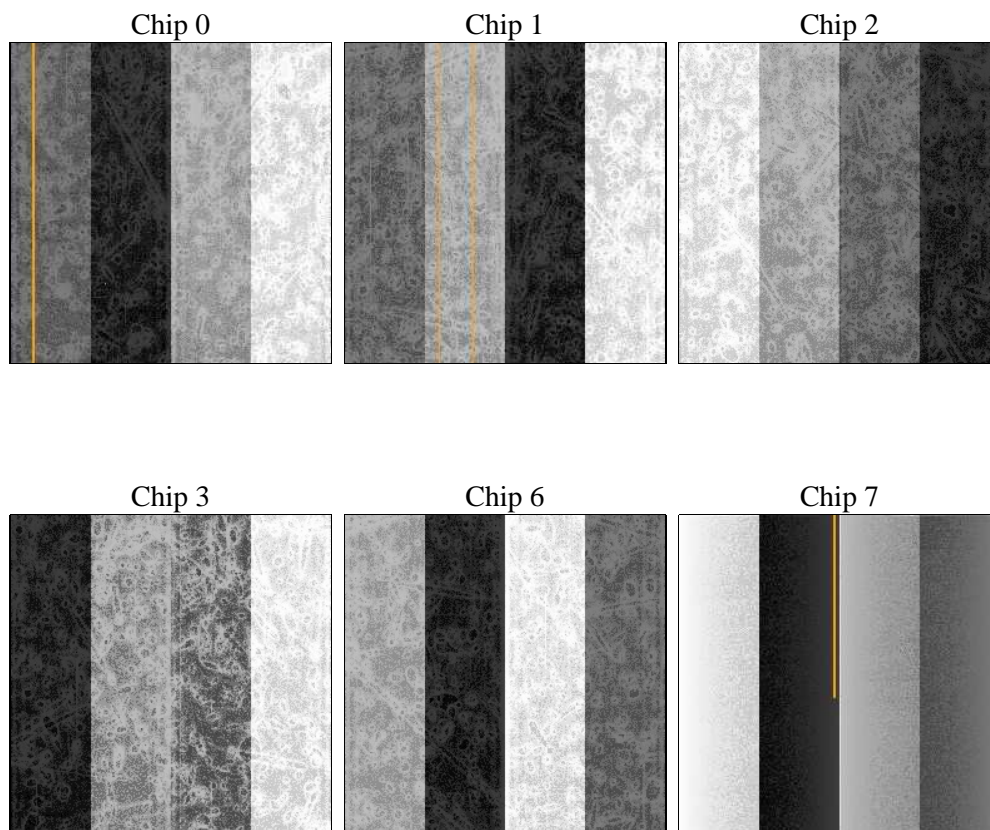
2 OBI

2.1 OBI

2.1.1 Images



2.1.2 Bias



2.1.3 Parameters

obi_num	0	Obi number	sched_exp_time	0.0	[s] Scheduled observation exposure time
ascdsver	8.4.5	Processing system revision	ontime	3549.1315461099	Sum of GTIs [s]
caldsver	4.5.1.1	 	ontime0	1471.1825291067	Sum of GTIs [s]
date	2012-08-24T06:20:26	Date and time of file creation	ontime1	1477.7057388276	Sum of GTIs [s]
revision	4	Processing version of data	ontime2	1403.5831828117	Sum of GTIs [s]
			ontime3	1435.4490989447	Sum of GTIs [s]
			ontime6	1562.0547090322	Sum of GTIs [s]
			ontime7	3549.1315461099	Sum of GTIs [s]
			l1events	1061569	Number of level 1 events

2.1.4 Events

	ccd 0	ccd 1	ccd 2	ccd 3	ccd 6	ccd 7		ccd 0	ccd 1	ccd 2	ccd 3	ccd 6	ccd 7
level 1 events	140831	142498	138419	141253	157431	341137	grade 0 events	69761	70836	68892	70680	77679	83066
rejected events	13962	14133	15000	14837	14969	19958		49%	49%	49%	50%	49%	24%
rejected %	9%	9%	10%	10%	9%	5%	grade 1 events	446	442	447	438	451	221
								0%	0%	0%	0%	0%	0%
							grade 2 events	22532	22617	21762	22105	24538	71572
								15%	15%	15%	15%	15%	20%
							grade 3 events	7978	8153	7915	8128	8794	33692
								5%	5%	5%	5%	5%	9%
							grade 4 events	8033	8139	7772	8030	8958	32602
								5%	5%	5%	5%	5%	9%
							grade 5 events	1050	1059	961	1054	1199	4619
								0%	0%	0%	0%	0%	1%
							grade 6 events	18565	18620	17345	17473	22493	100532
								13%	13%	12%	12%	14%	29%
							grade 7 events	12466	12632	13325	13345	13319	14833
								8%	8%	9%	9%	8%	4%

2.2 Compared Parameters

Parameter	Planned	Actual
Instrument	ACIS	ACIS
Detector	ACIS-012367	ACIS-012367
Grating	NONE	NONE
Data mode	FAINT	FAINT
Observation mode	SECONDARY	SECONDARY
[deg] Pointing RA	0	257.3857691288986
[deg] Pointing Dec	0	-30.90249860816548
[deg] Pointing Roll	0.0	85.0094005351354
[mm] SIM focus pos	-0.782348	-1.038866356238299
[mm] SIM defocus	0	0.4944702831659975
[mm] SIM translation stage pos	-233.592463	250.466033080201
[mm] SIM translation stage offset	0	-0.01005468664627074
[s] Observation start time (MET)	68978346.19776499	68978345.429296
Observation start date	2000-03-09T08:39:06	2000-03-09T08:39:05
[s] Observation end time (MET)	68986000.898045	68986000.129576
Observation end date	2000-03-09T10:46:41	2000-03-09T10:46:40
Read mode	TIMED	TIMED

Parameter	Planned	Actual
Obspar format version number	7	7
Obspar file type	PREDICTED	ACTUAL
Obspar update status	NONE	UPDATED
On-chip summing requested	N	N
Subarray requested	NONE	NONE
Alternating exposures requested	N	N
[s] Primary exposure time	3.2	3.2

2.3 Star Slots

2.4 FID Slots

A Summary

A.1 Status

V&V Scientist	Jen Lauer
V&V Date (YYYY-MM-DD)	2012.08.24
V&V Edition	1
V&V Disposition and Status	OK
V&V Charge Time	3.5491315461099

A.2 Comments