

# V&V Reference Report

## L2 ASCDS Version : 8.4.5

Observation 61902 - L2 Version 4  
Chandra X-Ray Center

L2 Processing Date : Sep 5 2012

## Contents

<b>1</b>	<b>Front</b>	<b>2</b>
<b>2</b>	<b>OBI</b>	<b>3</b>
2.1	OBI . . . . .	3
2.1.1	Images . . . . .	3
2.1.2	Bias . . . . .	3
2.1.3	Parameters . . . . .	4
2.1.4	Events . . . . .	4
2.2	Compared Parameters . . . . .	5
2.3	Star Slots . . . . .	6
2.4	FID Slots . . . . .	6
<b>A</b>	<b>Summary</b>	<b>7</b>
A.1	Status . . . . .	7
A.2	Comments . . . . .	7

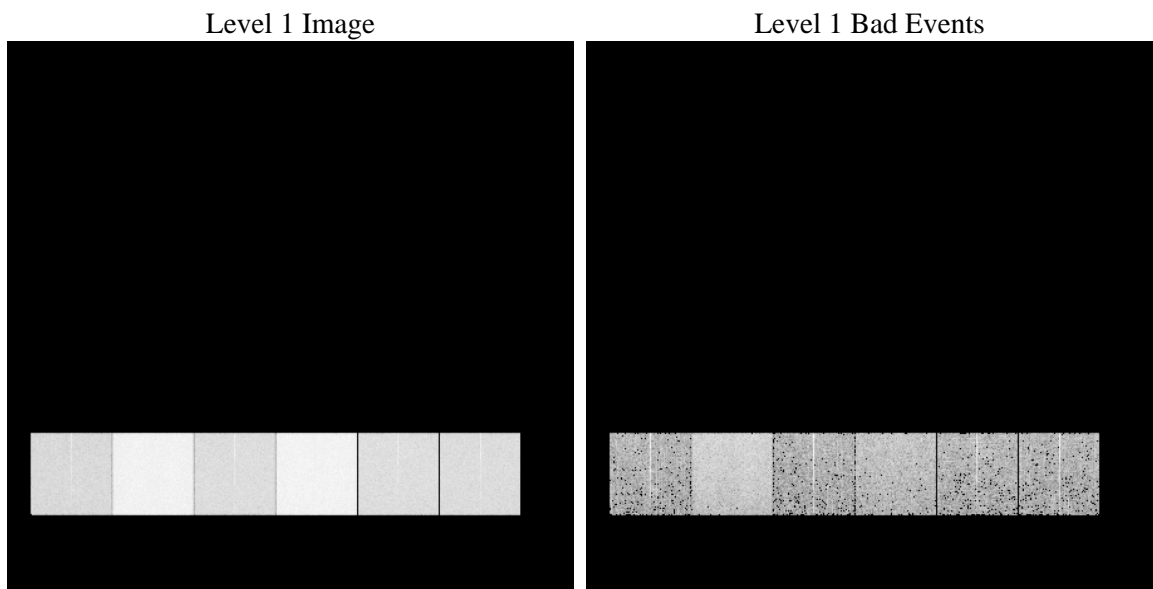
# 1 Front

seq_num	&#160	Sequence number
obs_id	61902	Observation id
title	ACIS-456789 diagnostics	Proposal title
observer	CHANDRA engineering request/realtime commanding	Principal investig
object	&#160	Source name
dtcycle	0	&#160
cycle	P	events from which exps? Prim/Second/Both
ra_targ	0.0	Observer's specified target RA [deg]
dec_targ	0.0	Observer's specified target Dec [deg]
ra_nom	330.44982003823	Nominal RA [deg]
dec_nom	-44.374949649687	Nominal Dec [deg]
roll_nom	317.82959702555	Nominal Roll [deg]
revision	4	Processing version of data
ontime	4913.5842113793	Sum of GTIs [s]
livetime	4851.3654494896	Livetime [s]
ontime4	2025.6483796537	Sum of GTIs [s]
ontime5	5292.7372248769	Sum of GTIs [s]
ontime6	2197.4234692752	Sum of GTIs [s]
ontime7	4913.5842113793	Sum of GTIs [s]
ontime8	2216.8697391599	Sum of GTIs [s]
ontime9	2174.7362491786	Sum of GTIs [s]
l2events	1352750	Number of level 2 events

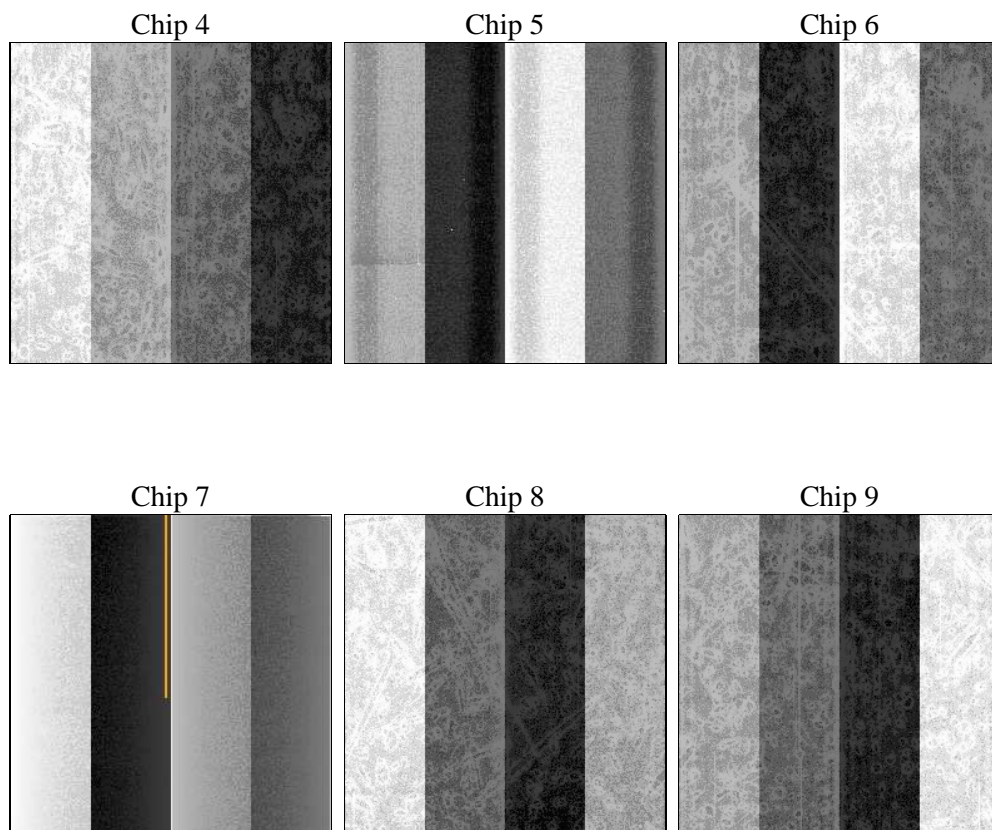
## 2 OBI

### 2.1 OBI

#### 2.1.1 Images



#### 2.1.2 Bias



### 2.1.3 Parameters

obi_num	0	Obi number	sched_exp_time	0.0	[s] Scheduled observation exposure time
ascdsver	8.4.5	Processing system revision	ontime	4913.5842113793	Sum of GTIs [s]
caldbver	4.5.1.1	&#160	ontime4	2025.6483796537	Sum of GTIs [s]
date	2012-09-05T16:49:30	Date and time of file creation	ontime5	5292.7372248769	Sum of GTIs [s]
revision	4	Processing version of data	ontime6	2197.4234692752	Sum of GTIs [s]
			ontime7	4913.5842113793	Sum of GTIs [s]
			ontime8	2216.8697391599	Sum of GTIs [s]
			ontime9	2174.7362491786	Sum of GTIs [s]
			l1events	1554538	Number of level 1 events

### 2.1.4 Events

	ccd 4	ccd 5	ccd 6	ccd 7	ccd 8	ccd 9		ccd 4	ccd 5	ccd 6	ccd 7	ccd 8	ccd 9
level 1 events	167990	397980	193149	412110	197202	186107	grade 0 events	82831	75272	94857	98448	97583	91531
rejected events	19162	43101	18275	25655	19808	19050		49%	18%	49%	23%	49%	49%
rejected %	11%	10%	9%	6%	10%	10%	grade 1 events	450	218	475	264	485	456
								0%	0%	0%	0%	0%	0%
							grade 2 events	28046	139768	30853	85301	31341	29764
								16%	35%	15%	20%	15%	15%
							grade 3 events	8720	19758	10602	38804	10908	9981
								5%	4%	5%	9%	5%	5%
							grade 4 events	8665	19600	10506	38429	11054	10208
								5%	4%	5%	9%	5%	5%
							grade 5 events	1331	8275	1401	5717	1516	1476
								0%	2%	0%	1%	0%	0%
							grade 6 events	20566	100682	28056	125730	26508	25573
								12%	25%	14%	30%	13%	13%
							grade 7 events	17381	34407	16399	19417	17807	17118
								10%	8%	8%	4%	9%	9%

## 2.2 Compared Parameters

Parameter	Planned	Actual
Instrument	ACIS	ACIS
Detector	ACIS-456789	ACIS-456789
Grating	NONE	NONE
Data mode	FAINT	FAINT
Observation mode	SECONDARY	SECONDARY
[deg] Pointing RA	0	330.4498200382264
[deg] Pointing Dec	0	-44.37494964968685
[deg] Pointing Roll	0.0	317.8295970255475
[mm] SIM focus pos	-0.684267	-1.428180813131781
[mm] SIM defocus	0	0.1051558262725154
[mm] SIM translation stage pos	-190.132523	250.466033080201
[mm] SIM translation stage offset	0	-0.01005468664627074
[s] Observation start time (MET)	86390729.09199999	86390728.323193
Observation start date	2000-09-26T21:25:29	2000-09-26T21:25:28
[s] Observation end time (MET)	86401237.392	86401236.62358899
Observation end date	2000-09-27T00:20:37	2000-09-27T00:20:36
Read mode	TIMED	TIMED

Parameter	Planned	Actual
Obspar format version number	7	7
Obspar file type	PREDICTED	ACTUAL
Obspar update status	NONE	UPDATED
On-chip summing requested	N	N
Subarray requested	NONE	NONE
Alternating exposures requested	N	N
[s] Primary exposure time	0.000000	3.2

## 2.3 Star Slots

## 2.4 FID Slots

## **A Summary**

### **A.1 Status**

V&V Scientist	Jen Lauer
V&V Date (YYYY-MM-DD)	2012.09.14
V&V Edition	1
V&V Disposition and Status	OK
V&V Charge Time	4.9135842113793

### **A.2 Comments**