

V&V Reference Report

L2 ASCDS Version : 7.6.10

Observation 61902 - L2 Version 001
Chandra X-Ray Center

L2 Processing Date : Jun 9 2007

Contents

1	Front	2
2	OBI	3
2.1	OBI	3
2.1.1	Images	3
2.1.2	Bias	3
2.1.3	Parameters	4
2.1.4	Events	4
2.2	Compared Parameters	5
2.3	Star Slots	6
2.4	FID Slots	6
A	Summary	7
A.1	Status	7
A.2	Comments	7

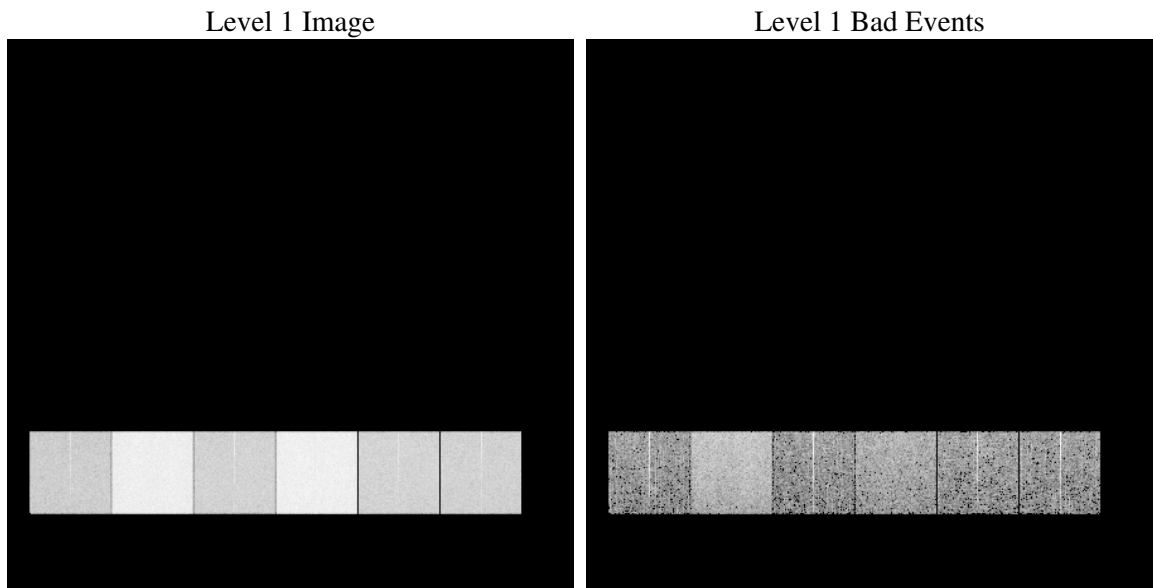
1 Front

seq_num	
obs_id	61902
title	ACIS-456789 diagnostics
observer	CHANDRA engineering request/realtime commanding
object	
dtcycle	0
cycle	P
ra_targ	0.0
dec_targ	0.0
ra_nom	330.44982003823
dec_nom	-44.374949649687
roll_nom	317.82959702555
revision	3
ontime	4914.3235565871
livetime	4852.0954326632
ontime4	2024.9108448476
ontime5	5293.517610088
ontime6	2196.6448944658
ontime7	4914.3235565871
ontime8	2216.1732443571
ontime9	2173.8345543742
l2events	1354272

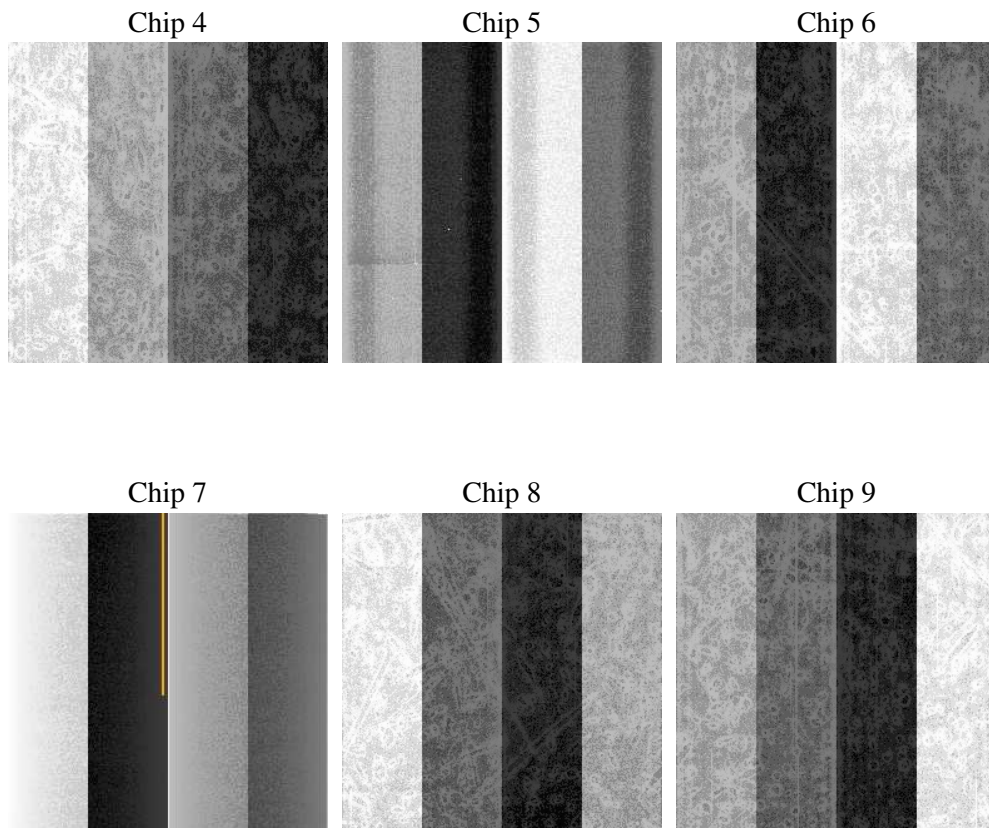
2 OBI

2.1 OBI

2.1.1 Images



2.1.2 Bias



2.1.3 Parameters

obi_num	0
ascdsver	7.6.10
caldbver	3.4.0
date	2007-06-09T23:31:53
revision	3

sched_exp_time	0.0
ontime	4914.3235565871
ontime4	2024.9108448476
ontime5	5293.517610088
ontime6	2196.6448944658
ontime7	4914.3235565871
ontime8	2216.1732443571
ontime9	2173.8345543742
l1events	1554538

2.1.4 Events

	ccd 4	ccd 5	ccd 6	ccd 7	ccd 8	ccd 9
level 1 events	167990	397980	193149	412110	197202	186107
rejected events	19268	41959	18398	25125	19865	19133
rejected %	11%	10%	9%	6%	10%	10%

	ccd 4	ccd 5	ccd 6	ccd 7	ccd 8	ccd 9
grade 0 events	81768	79075	94016	99171	97201	90930
	48%	19%	48%	24%	49%	48%
grade 1 events	428	232	456	268	472	441
	0%	0%	0%	0%	0%	0%
grade 2 events	29117	135942	31700	84515	31726	30367
	17%	34%	16%	20%	16%	16%
grade 3 events	8594	20837	10475	39227	10855	9899
	5%	5%	5%	9%	5%	5%
grade 4 events	8526	20720	10384	38812	10976	10129
	5%	5%	5%	9%	5%	5%
grade 5 events	1334	8247	1411	5698	1518	1480
	0%	2%	0%	1%	0%	0%
grade 6 events	20717	99447	28176	125260	26579	25649
	12%	24%	14%	30%	13%	13%
grade 7 events	17506	33480	16531	19159	17875	17212
	10%	8%	8%	4%	9%	9%

2.2 Compared Parameters

Parameter	Planned	Actual	Parameter	Planned	Actual
Instrument	ACIS	ACIS	Obspar format version number	6	6
Detector	ACIS-456789	ACIS-456789	Obspar file type	PREDICTED	ACTUAL
Grating	NONE	NONE	Obspar update status	NONE	UPDATED
Data mode	FAINT	FAINT	On-chip summing requested	N	N
Observation mode	SECONDARY	SECONDARY	Subarray requested	NONE	NONE
Pointing RA	0	330.4498200382264	Alternating exposures requested	N	N
Pointing Dec	0	-44.37494964968689	Primary exposure time	0.000000	3.2
Pointing Roll	0.0	317.8295970255474			
SIM focus pos (mm)	-0.684267	-1.428180813131781			
SIM defocus (mm)	0	0.1051558262725154			
SIM translation stage pos (mm)	-190.132523	250.466033080201			
SIM translation stage offset (mm)	0	-0.01005468664627074			
Observation start time	86390729.09199999	86390728.323193			
Observation start date	2000-09-26T21:25:29	2000-09-26T21:25:28			
Observation end time	86401237.392	86401236.62358899			
Observation end date	2000-09-27T00:20:37	2000-09-27T00:20:36			
Read mode	TIMED	TIMED			

2.3 Star Slots

2.4 FID Slots

A Summary

A.1 Status

V&V Scientist	Beth Sundheim
V&V Date (YYYY-MM-DD)	2007.06.12
V&V Edition	1
V&V Disposition and Status	OK
V&V Charge Time	4.91432355

A.2 Comments

Focal plane temperature is warmer than -118.7 C degrees during most of the observation. This temperature is the upper limit of the verified ACIS calibration for the front-illuminated chips. The focal plane temperature also exceeds the upper limit of the verified ACIS calibration for the back-illuminated chips. The ACIS spectral response calibration is less accurate at these warmer temperatures than it is at -119.7 C.

Users whose science objectives depend on the most accurate spectral response (ie: fitting line-rich spectra) may notice an effect. Users whose science objectives do not depend on the most accurate spectral response should not notice an effect.