

V&V Reference Report

L2 ASCDS Version : 8.4.5

Observation 61832 - L2 Version 3
Chandra X-Ray Center

L2 Processing Date : Sep 4 2012

Contents

1	Front	2
2	OBI	3
2.1	OBI	3
2.1.1	Images	3
2.1.2	Bias	3
2.1.3	Parameters	4
2.1.4	Events	4
2.2	Compared Parameters	5
2.3	Star Slots	6
2.4	FID Slots	6
A	Summary	7
A.1	Status	7
A.2	Comments	7

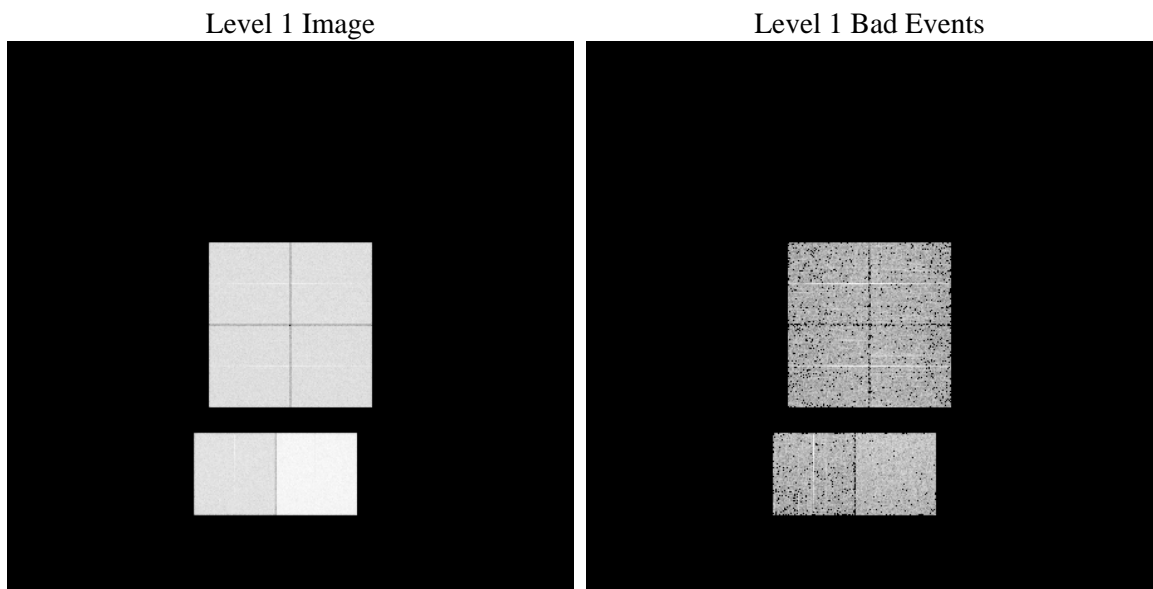
1 Front

seq_num	 	Sequence number
obs_id	61832	Observation id
title	ACIS-012367 diagnostics	Proposal title
observer	CHANDRA engineering request/realtime commanding	Principal investig
object	 	Source name
dtcycle	0	
cycle	P	events from which exps? Prim/Second/Both
ra_targ	0.0	Observer's specified target RA [deg]
dec_targ	0.0	Observer's specified target Dec [deg]
ra_nom	65.156795473335	Nominal RA [deg]
dec_nom	-7.9890410208083	Nominal Dec [deg]
roll_nom	349.86672358624	Nominal Roll [deg]
revision	3	Processing version of data
ontime	5486.7251216173	Sum of GTIs [s]
livetime	5417.2489044182	Livetime [s]
ontime0	2459.1176260263	Sum of GTIs [s]
ontime1	2504.5334551036	Sum of GTIs [s]
ontime2	2371.6921842396	Sum of GTIs [s]
ontime3	2378.6043267697	Sum of GTIs [s]
ontime6	2585.6412657201	Sum of GTIs [s]
ontime7	5486.7251216173	Sum of GTIs [s]
l2events	1262881	Number of level 2 events

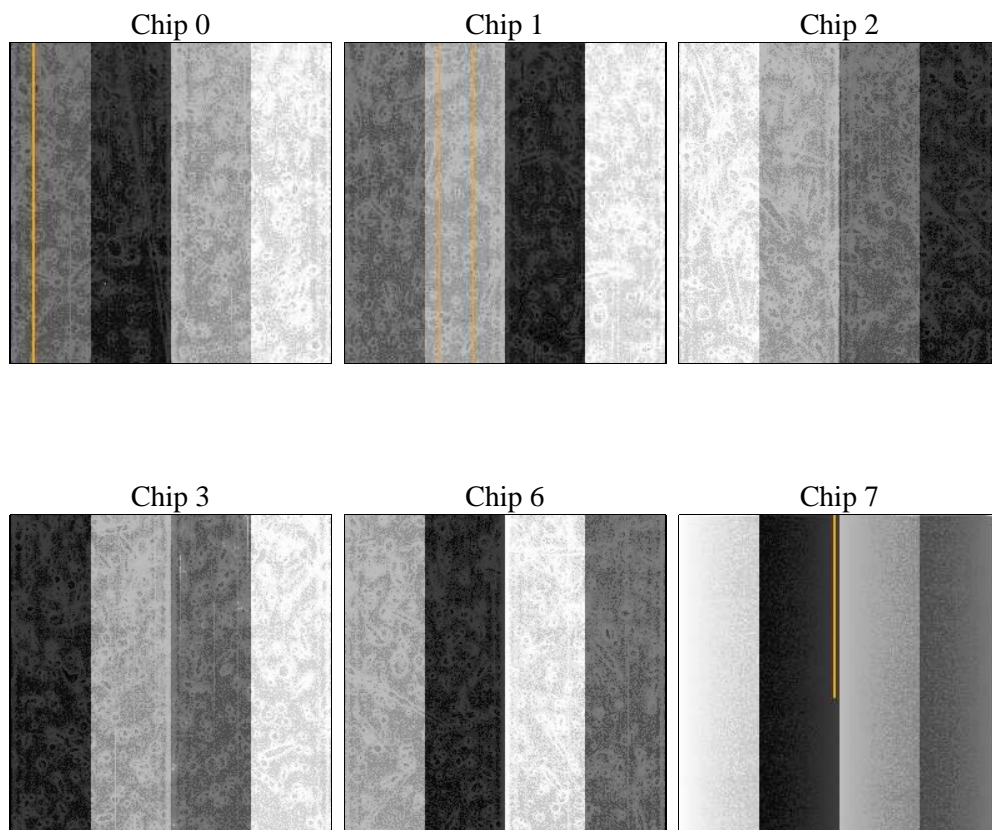
2 OBI

2.1 OBI

2.1.1 Images



2.1.2 Bias



2.1.3 Parameters

obi_num	1	Obi number	sched_exp_time	0.0	[s] Scheduled observation exposure time
ascdsver	8.4.5	Processing system revision	ontime	5486.7251216173	Sum of GTIs [s]
caldsver	4.5.1.1	 	ontime0	2459.1176260263	Sum of GTIs [s]
date	2012-09-04T08:53:51	Date and time of file creation	ontime1	2504.5334551036	Sum of GTIs [s]
revision	3	Processing version of data	ontime2	2371.6921842396	Sum of GTIs [s]
			ontime3	2378.6043267697	Sum of GTIs [s]
			ontime6	2585.6412657201	Sum of GTIs [s]
			ontime7	5486.7251216173	Sum of GTIs [s]
			l1events	1430812	Number of level 1 events

2.1.4 Events

	ccd 0	ccd 1	ccd 2	ccd 3	ccd 6	ccd 7		ccd 0	ccd 1	ccd 2	ccd 3	ccd 6	ccd 7
level 1 events	195096	200428	191380	192616	216055	435237	grade 0 events	98109	100797	97272	98036	108446	105749
rejected events	17314	17735	17044	17862	18217	25060		50%	50%	50%	50%	50%	24%
rejected %	8%	8%	8%	9%	8%	5%	grade 1 events	469	507	492	506	506	243
								0%	0%	0%	0%	0%	0%
							grade 2 events	31503	32077	30444	30605	33938	91782
								16%	16%	15%	15%	15%	21%
							grade 3 events	11293	11496	10871	11054	12206	42089
								5%	5%	5%	5%	5%	9%
							grade 4 events	11152	11696	10936	11128	11978	41790
								5%	5%	5%	5%	5%	9%
							grade 5 events	1330	1409	1360	1383	1563	5680
								0%	0%	0%	0%	0%	1%
							grade 6 events	25725	26627	24813	24166	31270	129017
								13%	13%	12%	12%	14%	29%
							grade 7 events	15515	15819	15192	15738	16148	18887
								7%	7%	7%	8%	7%	4%

2.2 Compared Parameters

Parameter	Planned	Actual	Parameter	Planned	Actual
Instrument	ACIS	ACIS	Obspar format version number	7	7
Detector	ACIS-012367	ACIS-012367	Obspar file type	PREDICTED	ACTUAL
Grating	NONE	NONE	Obspar update status	NONE	UPDATED
Data mode	FAINT	FAINT	On-chip summing requested	N	N
Observation mode	SECONDARY	SECONDARY	Subarray requested	NONE	NONE
[deg] Pointing RA	0	65.15679547333497	Alternating exposures requested	N	N
[deg] Pointing Dec	0	-7.98904102080832	[s] Primary exposure time	3.2	3.2
[deg] Pointing Roll	0.0	349.8667235862418			
[mm] SIM focus pos	-0.782348	-0.7809083437167272			
[mm] SIM defocus	0	0.7524282956875696			
[mm] SIM translation stage pos	-233.592463	250.4635187648994			
[mm] SIM translation stage offset	0	-0.007540371344731511			
[s] Observation start time (MET)	92286234.11515	92286233.346669			
Observation start date	2000-12-04T03:03:54	2000-12-04T03:03:53			
[s] Observation end time (MET)	92328769.566761	92328768.79829299			
Observation end date	2000-12-04T14:52:50	2000-12-04T14:52:48			
Read mode	TIMED	TIMED			

2.3 Star Slots

2.4 FID Slots

A Summary

A.1 Status

V&V Scientist	Beth Sundheim
V&V Date (YYYY-MM-DD)	2012.09.12
V&V Edition	1
V&V Disposition and Status	OK
V&V Charge Time	5.4867251216173

A.2 Comments