

V&V Reference Report

L2 ASCDS Version : 7.6.9

Observation 61752 - L2 Version 001
Chandra X-Ray Center

L2 Processing Date : Nov 6 2006

Contents

| | | |
|----------|-------------------------------|----------|
| 1 | Front | 2 |
| 2 | OBI | 3 |
| 2.1 | OBI | 3 |
| 2.1.1 | Images | 3 |
| 2.1.2 | Bias | 3 |
| 2.1.3 | Parameters | 4 |
| 2.1.4 | Events | 4 |
| 2.2 | Compared Parameters | 5 |
| 2.3 | Aspect | 6 |
| 2.4 | Star Slots | 8 |
| 2.5 | FID Slots | 8 |
| A | Summary | 9 |
| A.1 | Status | 9 |
| A.2 | Comments | 9 |

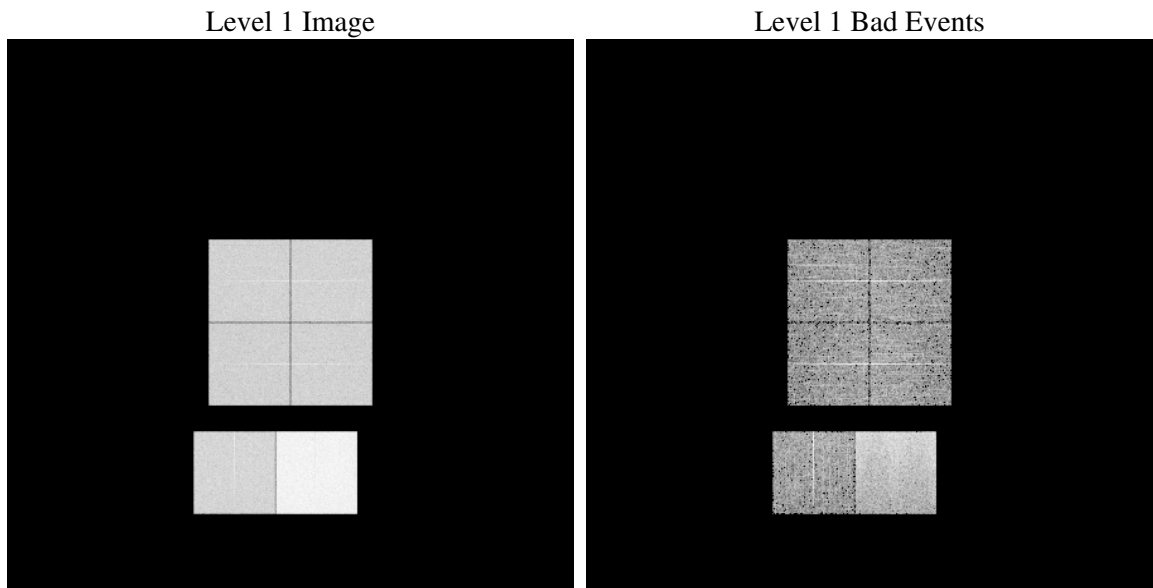
1 Front

| | |
|----------|---|
| seq_num | |
| obs_id | 61752 |
| title | ACIS-012367 diagnostics |
| observer | CHANDRA engineering request/realtime commanding |
| object | |
| dtcycle | 0 |
| cycle | P |
| ra_targ | 0.0 |
| dec_targ | 0.0 |
| ra_nom | 355.16668915455 |
| dec_nom | 38.569982423203 |
| roll_nom | 327.34096958102 |
| revision | 3 |
| ontime | 6338.4193325639 |
| livetime | 6258.158450437 |
| ontime0 | 2715.943523556 |
| ontime1 | 2732.1892051697 |
| ontime2 | 2550.6961503625 |
| ontime3 | 2615.3893832713 |
| ontime6 | 2813.2199610621 |
| ontime7 | 6338.4193325639 |
| l2events | 1325839 |

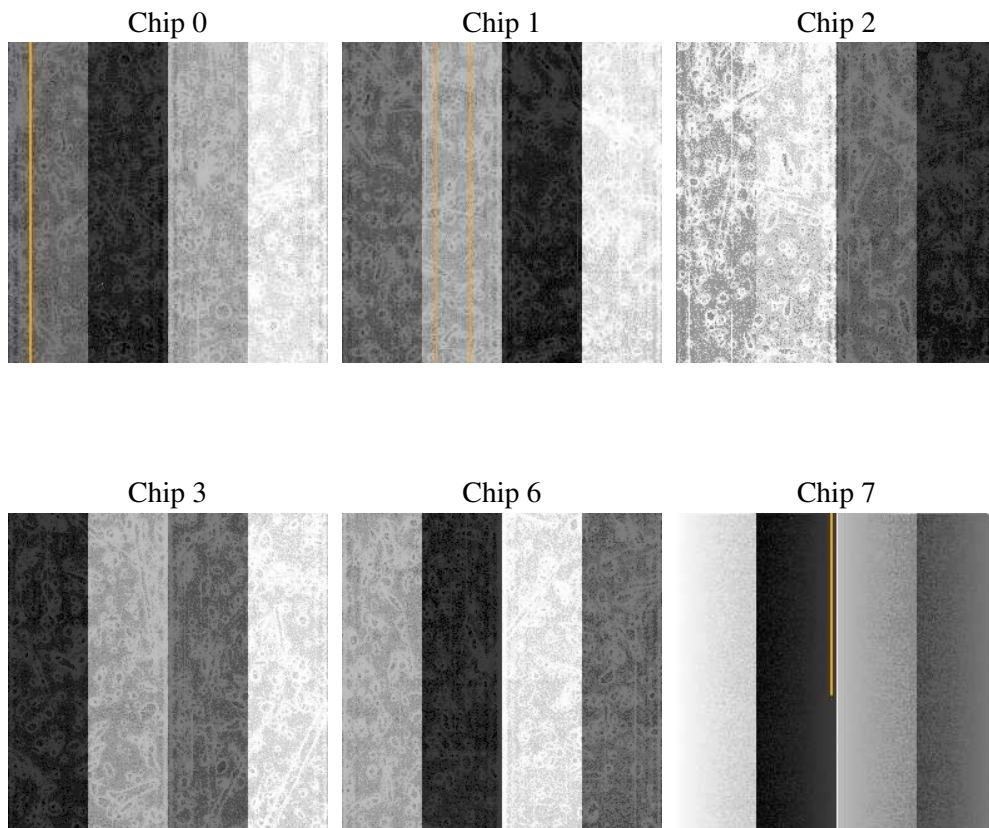
2 OBI

2.1 OBI

2.1.1 Images



2.1.2 Bias



2.1.3 Parameters

| | |
|----------|---------------------|
| obi_num | 0 |
| ascdsver | 7.6.9 |
| caldbver | 3.2.3 |
| date | 2006-11-06T18:17:16 |
| revision | 3 |

| | |
|----------------|-----------------|
| sched_exp_time | 0.0 |
| ontime | 6417.1984320134 |
| ontime0 | 2745.1584900767 |
| ontime1 | 2764.6041716933 |
| ontime2 | 2576.6244702935 |
| ontime3 | 2644.6864297986 |
| ontime6 | 2845.6303609759 |
| ontime7 | 6417.1984320134 |
| l1events | 1547626 |

2.1.4 Events

| | ccd 0 | ccd 1 | ccd 2 | ccd 3 | ccd 6 | ccd 7 |
|-----------------|--------|--------|--------|--------|--------|--------|
| level 1 events | 209955 | 211982 | 199693 | 206724 | 228863 | 490409 |
| rejected events | 22191 | 22198 | 20792 | 22985 | 23799 | 52712 |
| rejected % | 10% | 10% | 10% | 11% | 10% | 10% |

| | ccd 0 | ccd 1 | ccd 2 | ccd 3 | ccd 6 | ccd 7 |
|----------------|--------|--------|--------|--------|--------|--------|
| grade 0 events | 104446 | 106106 | 100381 | 103813 | 113057 | 83471 |
| | 49% | 50% | 50% | 50% | 49% | 17% |
| grade 1 events | 560 | 542 | 510 | 544 | 561 | 187 |
| | 0% | 0% | 0% | 0% | 0% | 0% |
| grade 2 events | 33396 | 34035 | 31634 | 32123 | 35801 | 131827 |
| | 15% | 16% | 15% | 15% | 15% | 26% |
| grade 3 events | 12121 | 12040 | 11341 | 11797 | 12955 | 34164 |
| | 5% | 5% | 5% | 5% | 5% | 6% |
| grade 4 events | 12049 | 12134 | 11432 | 11881 | 12954 | 33570 |
| | 5% | 5% | 5% | 5% | 5% | 6% |
| grade 5 events | 1552 | 1558 | 1423 | 1638 | 1729 | 6857 |
| | 0% | 0% | 0% | 0% | 0% | 1% |
| grade 6 events | 27750 | 27748 | 25890 | 26096 | 32594 | 160068 |
| | 13% | 13% | 12% | 12% | 14% | 32% |
| grade 7 events | 18081 | 17819 | 17082 | 18832 | 19212 | 40265 |
| | 8% | 8% | 8% | 9% | 8% | 8% |

2.2 Compared Parameters

| Parameter | Planned | Actual | Parameter | Planned | Actual |
|-----------------------------------|---------------------|----------------------|---------------------------------|-----------|---------|
| Instrument | ACIS | ACIS | Obspar format version number | 6 | 6 |
| Detector | ACIS-012367 | ACIS-012367 | Obspar file type | PREDICTED | ACTUAL |
| Grating | NONE | NONE | Obspar update status | NONE | UPDATED |
| Data mode | FAINT | FAINT | On-chip summing requested | N | N |
| Observation mode | SECONDARY | SECONDARY | Subarray requested | NONE | NONE |
| Pointing RA | 0 | 355.1666891545532 | Alternating exposures requested | N | N |
| Pointing Dec | 0 | 38.56998242320294 | Primary exposure time | 0.000000 | 3.2 |
| Pointing Roll | 0.0 | 327.3409695810237 | | | |
| SIM focus pos (mm) | -0.782348 | -0.6828225247311905 | | | |
| SIM defocus (mm) | 0 | 0.8505141146731063 | | | |
| SIM translation stage pos (mm) | -233.592463 | 250.466033080201 | | | |
| SIM translation stage offset (mm) | 0 | -0.01005468664627074 | | | |
| Observation start time | 97574067.868 | 97574067.099406 | | | |
| Observation start date | 2001-02-03T07:54:28 | 2001-02-03T07:54:27 | | | |
| Observation end time | 97595377.619 | 97595376.850227 | | | |
| Observation end date | 2001-02-03T13:49:38 | 2001-02-03T13:49:36 | | | |
| Read mode | TIMED | TIMED | | | |

2.3 Aspect

2.4 Star Slots

2.5 FID Slots

A Summary

A.1 Status

| | |
|----------------------------|------------|
| V&V Scientist | Jen Lauer |
| V&V Date (YYYY-MM-DD) | 2006.11.06 |
| V&V Edition | 1 |
| V&V Disposition and Status | OK |
| V&V Charge Time | 6.33841933 |

A.2 Comments