

# V&V Reference Report

## L2 ASCDS Version : 8.4.5

Observation 61632 - L2 Version 3  
Chandra X-Ray Center

L2 Processing Date : Sep 16 2012

## Contents

<b>1</b>	<b>Front</b>	<b>2</b>
<b>2</b>	<b>OBI</b>	<b>3</b>
2.1	OBI . . . . .	3
2.1.1	Images . . . . .	3
2.1.2	Bias . . . . .	3
2.1.3	Parameters . . . . .	4
2.1.4	Events . . . . .	4
2.2	Compared Parameters . . . . .	5
2.3	Star Slots . . . . .	6
2.4	FID Slots . . . . .	6
<b>A</b>	<b>Summary</b>	<b>7</b>
A.1	Status . . . . .	7
A.2	Comments . . . . .	7

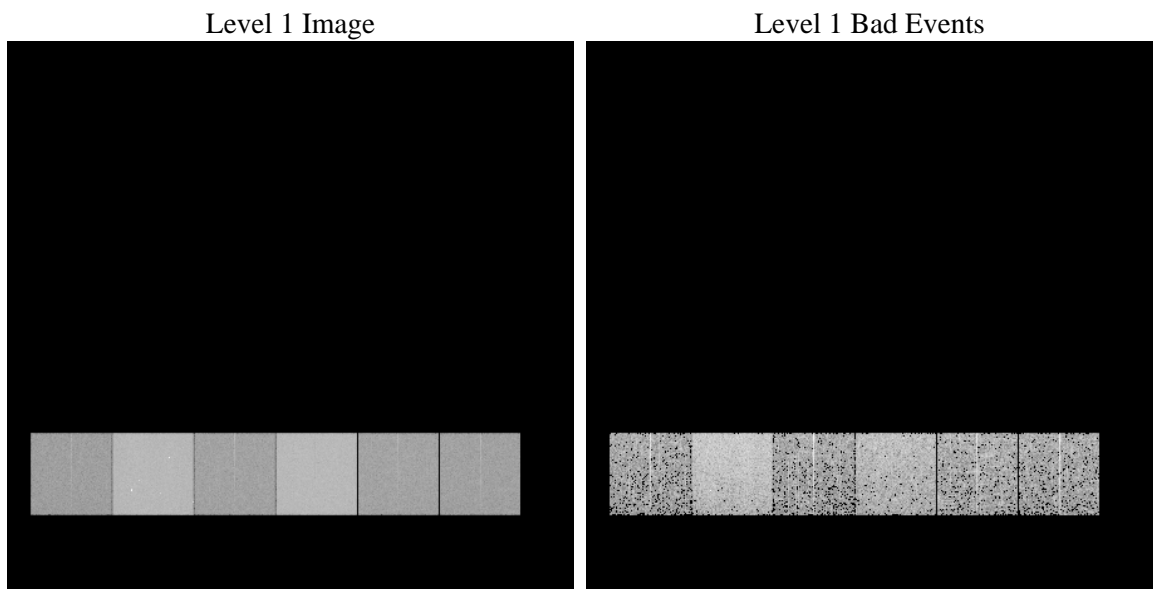
# 1 Front

seq_num	&#160	Sequence number
obs_id	61632	Observation id
title	ACIS-456789 diagnostics	Proposal title
observer	CHANDRA engineering request/realtime commanding	Principal investig
object	&#160	Source name
dtcycle	0	&#160
cycle	P	events from which exps? Prim/Second/Both
ra_targ	0.0	Observer's specified target RA [deg]
dec_targ	0.0	Observer's specified target Dec [deg]
ra_nom	309.95341108062	Nominal RA [deg]
dec_nom	60.016696977694	Nominal Dec [deg]
roll_nom	111.69255496744	Nominal Roll [deg]
revision	3	Processing version of data
ontime	4057.6386147887	Sum of GTIs [s]
livetime	4006.2583514316	Livetime [s]
ontime4	1646.3333614618	Sum of GTIs [s]
ontime5	4365.5291889608	Sum of GTIs [s]
ontime6	1766.2527427226	Sum of GTIs [s]
ontime7	4057.6386147887	Sum of GTIs [s]
ontime8	1795.421201095	Sum of GTIs [s]
ontime9	1724.1184807718	Sum of GTIs [s]
l2events	953983	Number of level 2 events

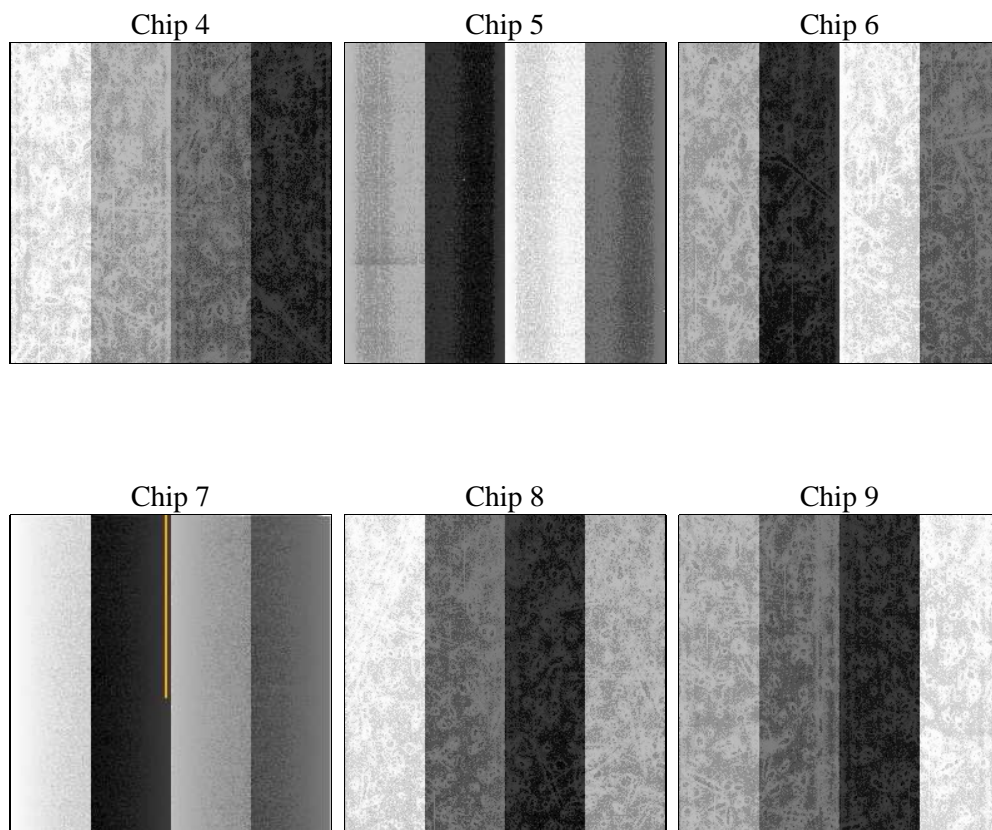
## 2 OBI

### 2.1 OBI

#### 2.1.1 Images



#### 2.1.2 Bias



### 2.1.3 Parameters

obi_num	0	Obi number	sched_exp_time	0.0	[s] Scheduled observation exposure time
ascdsver	8.4.5	Processing system revision	ontime	4057.6386147887	Sum of GTIs [s]
caldsver	4.5.1.1	&#160	ontime4	1646.3333614618	Sum of GTIs [s]
date	2012-09-16T23:13:27	Date and time of file creation	ontime5	4365.5291889608	Sum of GTIs [s]
revision	3	Processing version of data	ontime6	1766.2527427226	Sum of GTIs [s]
			ontime7	4057.6386147887	Sum of GTIs [s]
			ontime8	1795.421201095	Sum of GTIs [s]
			ontime9	1724.1184807718	Sum of GTIs [s]
			l1events	1107166	Number of level 1 events

### 2.1.4 Events

	ccd 4	ccd 5	ccd 6	ccd 7	ccd 8	ccd 9		ccd 4	ccd 5	ccd 6	ccd 7	ccd 8	ccd 9
level 1 events	118462	289825	135251	296465	139527	127636	grade 0 events	59098	66899	66032	70377	67931	62401
rejected events	13660	30569	13975	21694	15908	14241		49%	23%	48%	23%	48%	48%
rejected %	11%	10%	10%	7%	11%	11%	grade 1 events	350	280	323	186	353	339
								0%	0%	0%	0%	0%	0%
							grade 2 events	18759	89800	21052	60939	21656	20012
								15%	30%	15%	20%	15%	15%
							grade 3 events	6455	17525	7428	27915	7773	7105
								5%	6%	5%	9%	5%	5%
							grade 4 events	6305	17461	7560	27787	7953	6955
								5%	6%	5%	9%	5%	5%
							grade 5 events	981	5901	1092	4570	1107	1014
								0%	2%	0%	1%	0%	0%
							grade 6 events	14185	67740	19204	87958	18306	17109
								11%	23%	14%	29%	13%	13%
							grade 7 events	12329	24219	12560	16733	14448	12701
								10%	8%	9%	5%	10%	9%

## 2.2 Compared Parameters

Parameter	Planned	Actual	Parameter	Planned	Actual
Instrument	ACIS	ACIS	Obspar format version number	7	7
Detector	ACIS-456789	ACIS-456789	Obspar file type	PREDICTED	ACTUAL
Grating	NONE	NONE	Obspar update status	NONE	UPDATED
Data mode	FAINT	FAINT	On-chip summing requested	N	N
Observation mode	SECONDARY	SECONDARY	Subarray requested	NONE	NONE
[deg] Pointing RA	0	309.953411080618	Alternating exposures requested	N	N
[deg] Pointing Dec	0	60.01669697769412	[s] Primary exposure time	3.2	3.2
[deg] Pointing Roll	0.0	111.6925549674416			
[mm] SIM focus pos	-0.684267	-0.7809083437167272			
[mm] SIM defocus	0	0.7524282956875696			
[mm] SIM translation stage pos	-190.132523	250.466033080201			
[mm] SIM translation stage offset	0	-0.01005468664627074			
[s] Observation start time (MET)	106452706.361441	106452705.59298			
Observation start date	2001-05-17T02:11:46	2001-05-17T02:11:45			
[s] Observation end time (MET)	106462214.26181	106462213.49334			
Observation end date	2001-05-17T04:50:14	2001-05-17T04:50:13			
Read mode	TIMED	TIMED			

## **2.3 Star Slots**

## **2.4 FID Slots**

## **A Summary**

### **A.1 Status**

V&V Scientist	Jen Lauer
V&V Date (YYYY-MM-DD)	2012.09.19
V&V Edition	1
V&V Disposition and Status	OK
V&V Charge Time	4.0576386147887

### **A.2 Comments**