

V&V Reference Report

L2 ASCDS Version : 8.4.5

Observation 61482 - L2 Version 3
Chandra X-Ray Center

L2 Processing Date : Sep 23 2012

Contents

1	Front	2
2	OBI	3
2.1	OBI	3
2.1.1	Images	3
2.1.2	Bias	3
2.1.3	Parameters	4
2.1.4	Events	4
2.2	Compared Parameters	5
2.3	Star Slots	6
2.4	FID Slots	6
A	Summary	7
A.1	Status	7
A.2	Comments	7

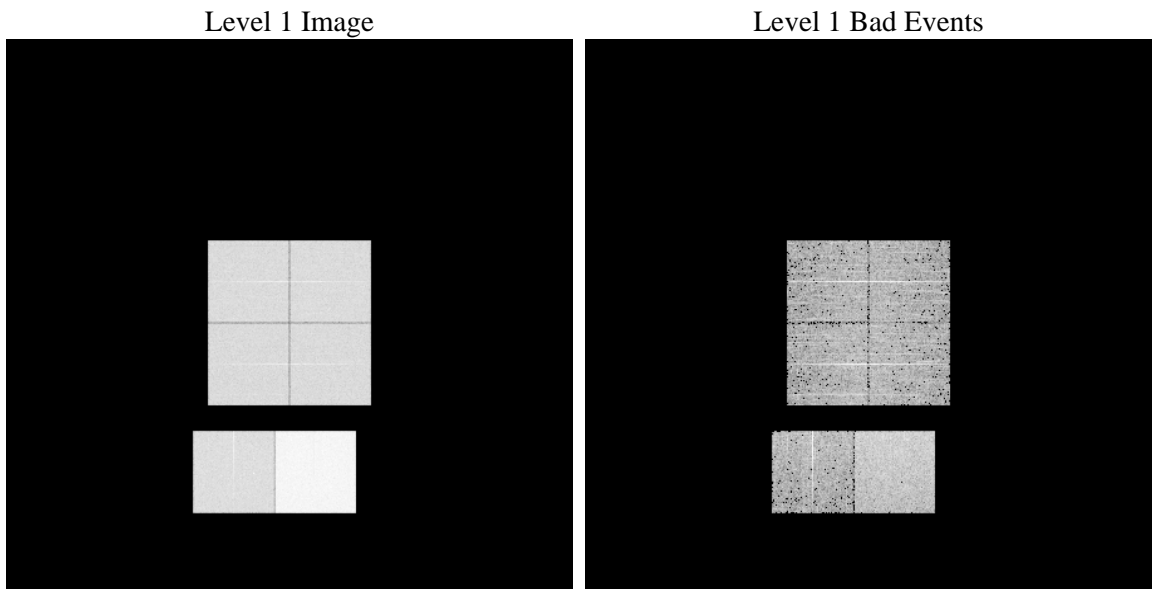
1 Front

seq_num	 	Sequence number
obs_id	61482	Observation id
title	ACIS-012367 diagnostics	Proposal title
observer	CHANDRA engineering request/realtime commanding	Principal investig
object	 	Source name
dtcycle	0	
cycle	P	events from which exps? Prim/Second/Both
ra_targ	0.0	Observer's specified target RA [deg]
dec_targ	0.0	Observer's specified target Dec [deg]
ra_nom	305.03073042138	Nominal RA [deg]
dec_nom	-35.01365458216	Nominal Dec [deg]
roll_nom	298.81989621976	Nominal Roll [deg]
revision	3	Processing version of data
ontime	7745.6290039271	Sum of GTIs [s]
livetime	7647.5491856215	Livetime [s]
ontime0	3033.6100934446	Sum of GTIs [s]
ontime1	3065.5697941631	Sum of GTIs [s]
ontime2	2897.4870516211	Sum of GTIs [s]
ontime3	2900.7281313837	Sum of GTIs [s]
ontime6	3228.0716857612	Sum of GTIs [s]
ontime7	7745.6290039271	Sum of GTIs [s]
l2events	1329194	Number of level 2 events

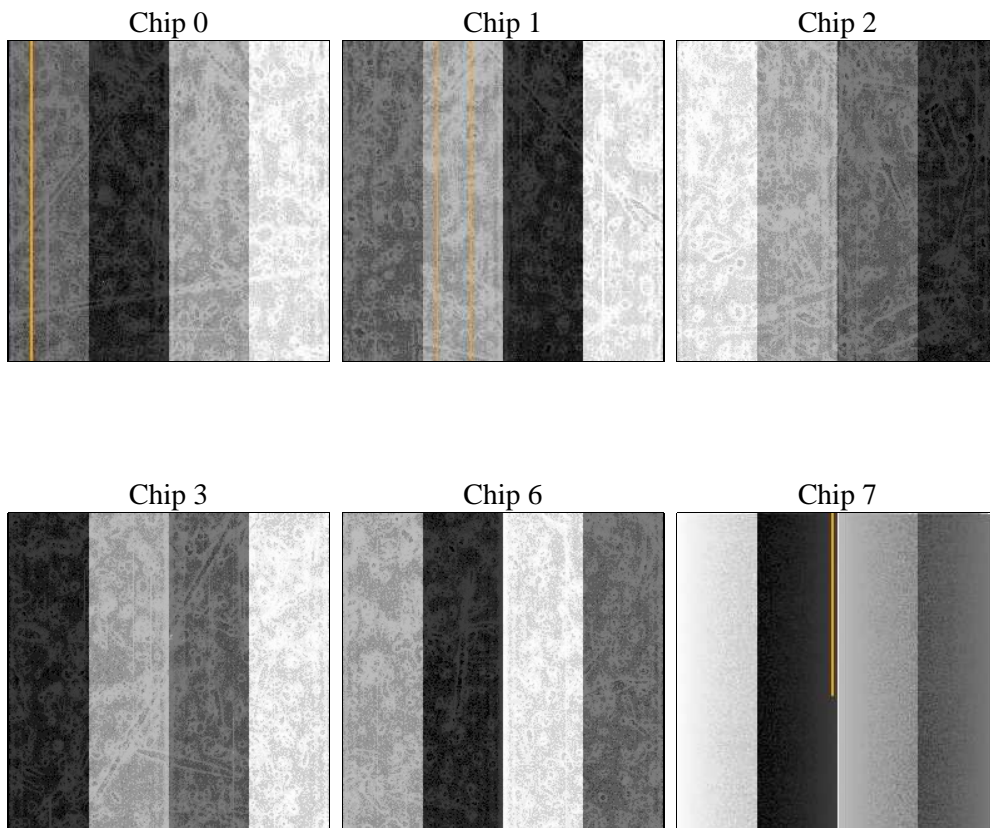
2 OBI

2.1 OBI

2.1.1 Images



2.1.2 Bias



2.1.3 Parameters

obi_num	0	Obi number	sched_exp_time	0.0	[s] Scheduled observation exposure time
ascdsver	8.4.5	Processing system revision	ontime	7745.6290039271	Sum of GTIs [s]
caldbver	4.5.1.1	 	ontime0	3033.6100934446	Sum of GTIs [s]
date	2012-09-23T18:10:48	Date and time of file creation	ontime1	3065.5697941631	Sum of GTIs [s]
revision	3	Processing version of data	ontime2	2897.4870516211	Sum of GTIs [s]
			ontime3	2900.7281313837	Sum of GTIs [s]
			ontime6	3228.0716857612	Sum of GTIs [s]
			ontime7	7745.6290039271	Sum of GTIs [s]
			l1events	1544203	Number of level 1 events

2.1.4 Events

	ccd 0	ccd 1	ccd 2	ccd 3	ccd 6	ccd 7		ccd 0	ccd 1	ccd 2	ccd 3	ccd 6	ccd 7
level 1 events	201941	204488	196848	198595	223805	518526	grade 0 events	98521	100048	95520	97486	108598	119139
rejected events	22491	22830	24100	24386	23920	41695		48%	48%	48%	49%	48%	22%
rejected %	11%	11%	12%	12%	10%	8%	grade 1 events	467	457	445	490	536	317
								0%	0%	0%	0%	0%	0%
							grade 2 events	32200	32483	30907	30886	35111	105299
								15%	15%	15%	15%	15%	20%
							grade 3 events	11197	11329	10619	10880	12038	48012
								5%	5%	5%	5%	5%	9%
							grade 4 events	11180	11226	10703	10794	11976	47639
								5%	5%	5%	5%	5%	9%
							grade 5 events	1656	1641	1551	1594	1931	8512
								0%	0%	0%	0%	0%	1%
							grade 6 events	26352	26572	24999	24163	32162	156742
								13%	12%	12%	12%	14%	30%
							grade 7 events	20368	20732	22104	22302	21453	32866
								10%	10%	11%	11%	9%	6%

2.2 Compared Parameters

Parameter	Planned	Actual	Parameter	Planned	Actual
Instrument	ACIS	ACIS	Obspar format version number	7	7
Detector	ACIS-012367	ACIS-012367	Obspar file type	PREDICTED	ACTUAL
Grating	NONE	NONE	Obspar update status	NONE	UPDATED
Data mode	FAINT	FAINT	On-chip summing requested	N	N
Observation mode	SECONDARY	SECONDARY	Subarray requested	NONE	NONE
[deg] Pointing RA	0	305.0307304213774	Alternating exposures requested	N	N
[deg] Pointing Dec	0	-35.01365458215997	[s] Primary exposure time	0.000000	3.2
[deg] Pointing Roll	0.0	298.8198962197613			
[mm] SIM focus pos	-0.782348	-0.6828225247311905			
[mm] SIM defocus	0	0.8505141146731063			
[mm] SIM translation stage pos	-233.592463	250.466033080201			
[mm] SIM translation stage offset	0	-0.01005468664627074			
[s] Observation start time (MET)	116081739.189	116081738.42014			
Observation start date	2001-09-05T12:55:39	2001-09-05T12:55:38			
[s] Observation end time (MET)	116103048.939	116103048.17099			
Observation end date	2001-09-05T18:50:49	2001-09-05T18:50:48			
Read mode	TIMED	TIMED			

2.3 Star Slots

2.4 FID Slots

A Summary

A.1 Status

V&V Scientist	Beth Sundheim
V&V Date (YYYY-MM-DD)	2012.09.26
V&V Edition	1
V&V Disposition and Status	OK
V&V Charge Time	7.7456290039271

A.2 Comments