

V&V Reference Report

L2 ASCDS Version : 8.4.5

Observation 61412 - L2 Version 3
Chandra X-Ray Center

L2 Processing Date : Sep 27 2012

Contents

1	Front	2
2	OBI	3
2.1	OBI	3
2.1.1	Images	3
2.1.2	Bias	3
2.1.3	Parameters	4
2.1.4	Events	4
2.2	Compared Parameters	5
2.3	Star Slots	6
2.4	FID Slots	6
A	Summary	7
A.1	Status	7
A.2	Comments	7

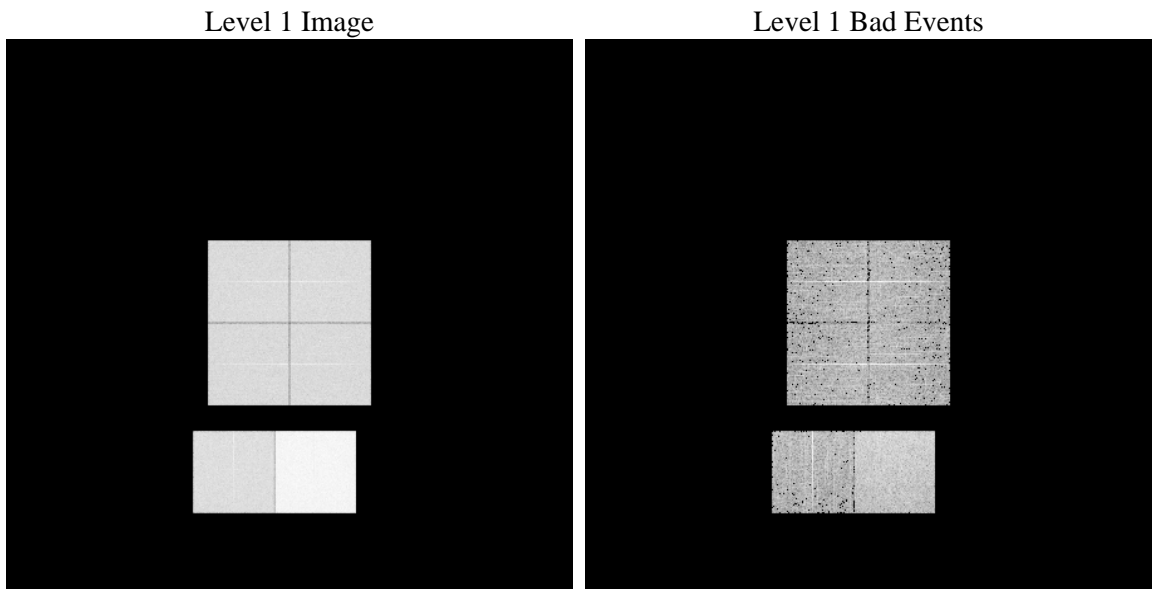
1 Front

seq_num	 	Sequence number
obs_id	61412	Observation id
title	ACIS-012367 diagnostics	Proposal title
observer	CHANDRA engineering request/realtime commanding	Principal investig
object	 	Source name
dtcycle	0	
cycle	P	events from which exps? Prim/Second/Both
ra_targ	0.0	Observer's specified target RA [deg]
dec_targ	0.0	Observer's specified target Dec [deg]
ra_nom	130.98047887101	Nominal RA [deg]
dec_nom	51.02586589878	Nominal Dec [deg]
roll_nom	82.652505868675	Nominal Roll [deg]
revision	3	Processing version of data
ontime	7903.1450213939	Sum of GTIs [s]
livetime	7803.0706404304	Livetime [s]
ontime0	3149.9269949645	Sum of GTIs [s]
ontime1	3206.9683869779	Sum of GTIs [s]
ontime2	2974.9935631007	Sum of GTIs [s]
ontime3	3002.7842727453	Sum of GTIs [s]
ontime6	3343.0916980207	Sum of GTIs [s]
ontime7	7903.1450213939	Sum of GTIs [s]
l2events	1321074	Number of level 2 events

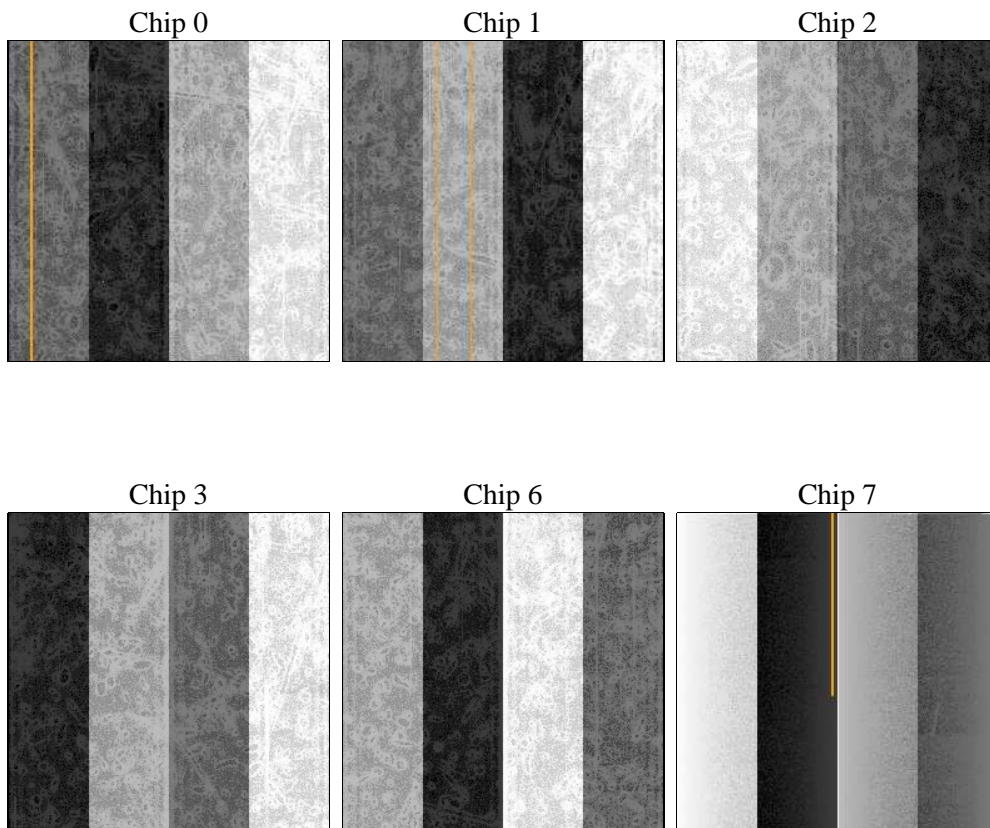
2 OBI

2.1 OBI

2.1.1 Images



2.1.2 Bias



2.1.3 Parameters

obi_num	1	Obi number	sched_exp_time	0.0	[s] Scheduled observation exposure time
ascdsver	8.4.5	Processing system revision	ontime	7903.1450213939	Sum of GTIs [s]
caldbver	4.5.1.1	 	ontime0	3149.9269949645	Sum of GTIs [s]
date	2012-09-27T04:48:50	Date and time of file creation	ontime1	3206.9683869779	Sum of GTIs [s]
revision	3	Processing version of data	ontime2	2974.9935631007	Sum of GTIs [s]
			ontime3	3002.7842727453	Sum of GTIs [s]
			ontime6	3343.0916980207	Sum of GTIs [s]
			ontime7	7903.1450213939	Sum of GTIs [s]
			l1events	1540396	Number of level 1 events

2.1.4 Events

	ccd 0	ccd 1	ccd 2	ccd 3	ccd 6	ccd 7		ccd 0	ccd 1	ccd 2	ccd 3	ccd 6	ccd 7
level 1 events	203075	205851	196004	197882	225453	512131	grade 0 events	100038	101179	96447	97427	109439	118876
rejected events	23024	23235	23845	24264	25260	44317		49%	49%	49%	49%	48%	23%
rejected %	11%	11%	12%	12%	11%	8%	grade 1 events	481	494	485	478	521	294
								0%	0%	0%	0%	0%	0%
							grade 2 events	31670	32775	30532	30745	34768	103822
								15%	15%	15%	15%	15%	20%
							grade 3 events	11459	11524	10717	10972	12359	47699
								5%	5%	5%	5%	5%	9%
							grade 4 events	11335	11533	10829	11163	12373	47103
								5%	5%	5%	5%	5%	9%
							grade 5 events	1595	1714	1511	1598	1830	8519
								0%	0%	0%	0%	0%	1%
							grade 6 events	26279	26674	24938	24250	32428	153329
								12%	12%	12%	12%	14%	29%
							grade 7 events	20218	19958	20545	21249	21735	32489
								9%	9%	10%	10%	9%	6%

2.2 Compared Parameters

Parameter	Planned	Actual
Instrument	ACIS	ACIS
Detector	ACIS-012367	ACIS-012367
Grating	NONE	NONE
Data mode	FAINT	FAINT
Observation mode	SECONDARY	SECONDARY
[deg] Pointing RA	0	130.9804788710117
[deg] Pointing Dec	0	51.02586589878046
[deg] Pointing Roll	0.0	82.65250586867475
[mm] SIM focus pos	-0.782348	-0.6828225247311905
[mm] SIM defocus	0	0.8505141146731063
[mm] SIM translation stage pos	-233.592463	250.4635187648994
[mm] SIM translation stage offset	0	-0.007540371344731511
[s] Observation start time (MET)	121791905.765	121791904.99665
Observation start date	2001-11-10T15:05:06	2001-11-10T15:05:04
[s] Observation end time (MET)	121816138.816	121816138.04762
Observation end date	2001-11-10T21:48:59	2001-11-10T21:48:58
Read mode	TIMED	TIMED

Parameter	Planned	Actual
Obspar format version number	7	7
Obspar file type	PREDICTED	ACTUAL
Obspar update status	NONE	UPDATED
On-chip summing requested	N	N
Subarray requested	NONE	NONE
Alternating exposures requested	N	N
[s] Primary exposure time	0.000000	3.2

2.3 Star Slots

2.4 FID Slots

A Summary

A.1 Status

V&V Scientist	Beth Sundheim
V&V Date (YYYY-MM-DD)	2012.09.27
V&V Edition	1
V&V Disposition and Status	OK
V&V Charge Time	7.9031450213939

A.2 Comments