

V&V Reference Report

L2 ASCDS Version : 7.6.10

Observation 61362 - L2 Version 001
Chandra X-Ray Center

L2 Processing Date : Jan 17 2007

Contents

1	Front	2
2	OBI	3
2.1	OBI	3
2.1.1	Images	3
2.1.2	Bias	3
2.1.3	Parameters	4
2.1.4	Events	4
2.2	Compared Parameters	5
2.3	Star Slots	6
2.4	FID Slots	6
A	Summary	7
A.1	Status	7
A.2	Comments	7

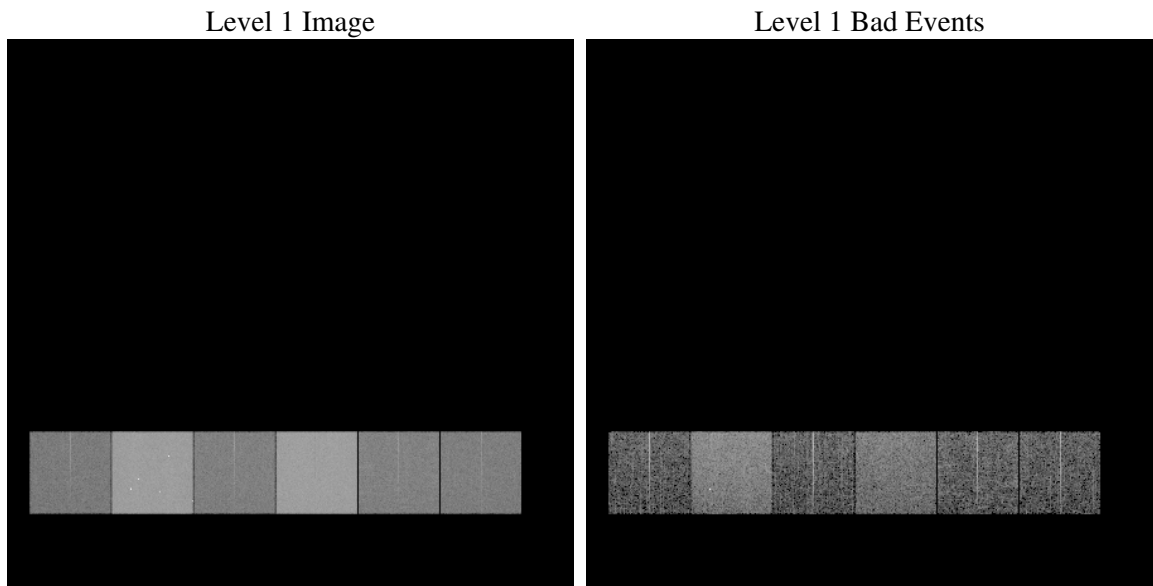
1 Front

seq_num	
obs_id	61362
title	ACIS-456789 diagnostics
observer	CHANDRA engineering request/realtime commanding
object	
dtcycle	0
cycle	P
ra_targ	0.0
dec_targ	0.0
ra_nom	354.02529594587
dec_nom	11.985598660361
roll_nom	297.01732505431
revision	2
ontime	6723.2738321275
livetime	6638.1396905956
ontime4	2568.3260579258
ontime5	7202.9352119714
ontime6	2781.6638914794
ontime7	6723.2738321275
ontime8	2876.2243389338
ontime9	2749.1303915083
l2events	1307848

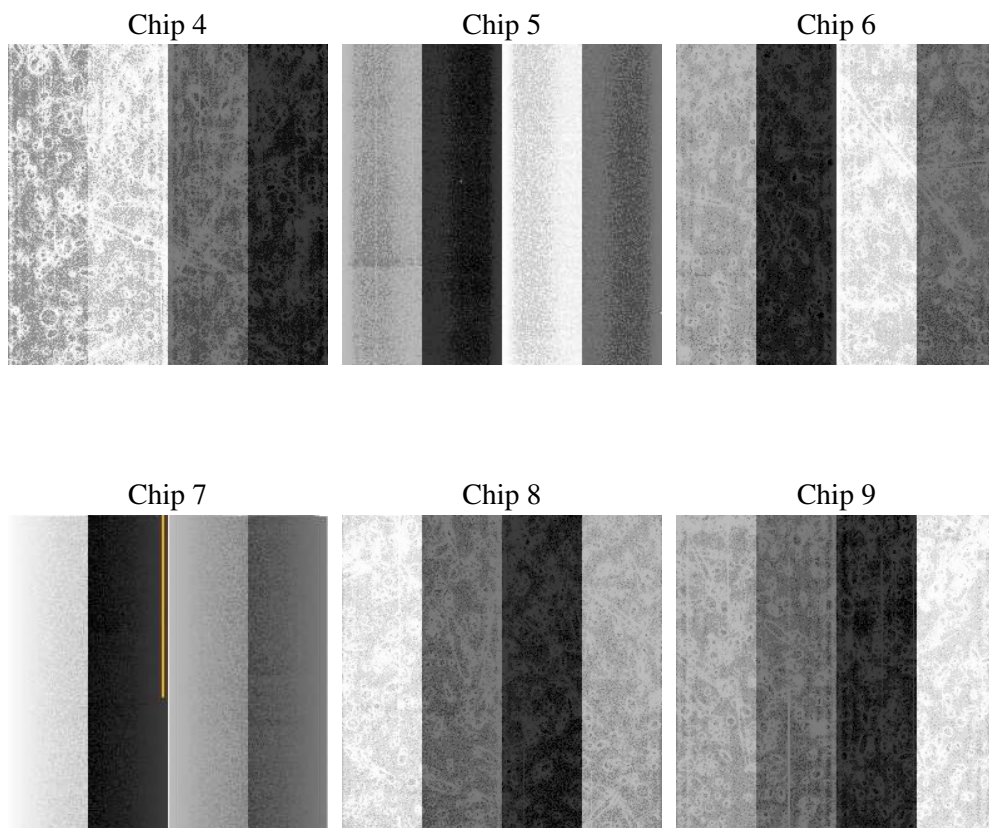
2 OBI

2.1 OBI

2.1.1 Images



2.1.2 Bias



2.1.3 Parameters

obi_num	1
ascdsver	7.6.10
caldsver	3.3.0
date	2007-01-17T05:58:20
revision	2

sched_exp_time	0.0
ontime	6723.2738321275
ontime4	2568.3260579258
ontime5	7202.9352119714
ontime6	2781.6638914794
ontime7	6723.2738321275
ontime8	2876.2243389338
ontime9	2749.1303915083
l1events	1543164

2.1.4 Events

	ccd 4	ccd 5	ccd 6	ccd 7	ccd 8	ccd 9
level 1 events	158836	412460	184216	422322	191368	173962
rejected events	21146	51663	22173	37209	23833	20547
rejected %	13%	12%	12%	8%	12%	11%

	ccd 4	ccd 5	ccd 6	ccd 7	ccd 8	ccd 9
grade 0 events	78209	88239	89097	97937	92518	84924
	49%	21%	48%	23%	48%	48%
grade 1 events	385	287	438	300	466	373
	0%	0%	0%	0%	0%	0%
grade 2 events	24773	129803	28374	85612	29691	27247
	15%	31%	15%	20%	15%	15%
grade 3 events	8644	23255	10101	39537	10702	9569
	5%	5%	5%	9%	5%	5%
grade 4 events	8451	22567	10031	38972	10620	9778
	5%	5%	5%	9%	5%	5%
grade 5 events	1258	9429	1576	7167	1791	1516
	0%	2%	0%	1%	0%	0%
grade 6 events	18811	99501	25625	125772	25336	22977
	11%	24%	13%	29%	13%	13%
grade 7 events	18305	39379	18974	27025	20244	17578
	11%	9%	10%	6%	10%	10%

2.2 Compared Parameters

Parameter	Planned	Actual	Parameter	Planned	Actual
Instrument	ACIS	ACIS	Obspar format version number	6	6
Detector	ACIS-456789	ACIS-456789	Obspar file type	PREDICTED	ACTUAL
Grating	NONE	NONE	Obspar update status	NONE	UPDATED
Data mode	FAINT	FAINT	On-chip summing requested	N	N
Observation mode	SECONDARY	SECONDARY	Subarray requested	NONE	NONE
Pointing RA	0	354.0252959458716	Alternating exposures requested	N	N
Pointing Dec	0	11.98559866036076	Primary exposure time	3.2	3.2
Pointing Roll	0.0	297.0173250543141			
SIM focus pos (mm)	-0.684267	-1.038866356238299			
SIM defocus (mm)	0	0.4944702831659975			
SIM translation stage pos (mm)	-190.132523	250.4635187648994			
SIM translation stage offset (mm)	0	-0.007540371344731511			
Observation start time	126364621.598177	126364620.82973			
Observation start date	2002-01-02T13:17:02	2002-01-02T13:17:00			
Observation end time	126386638.59906	126386637.83061			
Observation end date	2002-01-02T19:23:59	2002-01-02T19:23:57			
Read mode	TIMED	TIMED			

2.3 Star Slots

2.4 FID Slots

A Summary

A.1 Status

V&V Scientist	Jen Lauer
V&V Date (YYYY-MM-DD)	2007.01.17
V&V Edition	1
V&V Disposition and Status	OK
V&V Charge Time	6.72327383

A.2 Comments