

# V&V Reference Report

## L2 ASCDS Version : 8.4.5

Observation 61232 - L2 Version 3  
Chandra X-Ray Center

L2 Processing Date : Oct 5 2012

## Contents

<b>1</b>	<b>Front</b>	<b>2</b>
<b>2</b>	<b>OBI</b>	<b>3</b>
2.1	OBI . . . . .	3
2.1.1	Images . . . . .	3
2.1.2	Bias . . . . .	3
2.1.3	Parameters . . . . .	4
2.1.4	Events . . . . .	4
2.2	Compared Parameters . . . . .	5
2.3	Star Slots . . . . .	6
2.4	FID Slots . . . . .	6
<b>A</b>	<b>Summary</b>	<b>7</b>
A.1	Status . . . . .	7
A.2	Comments . . . . .	7

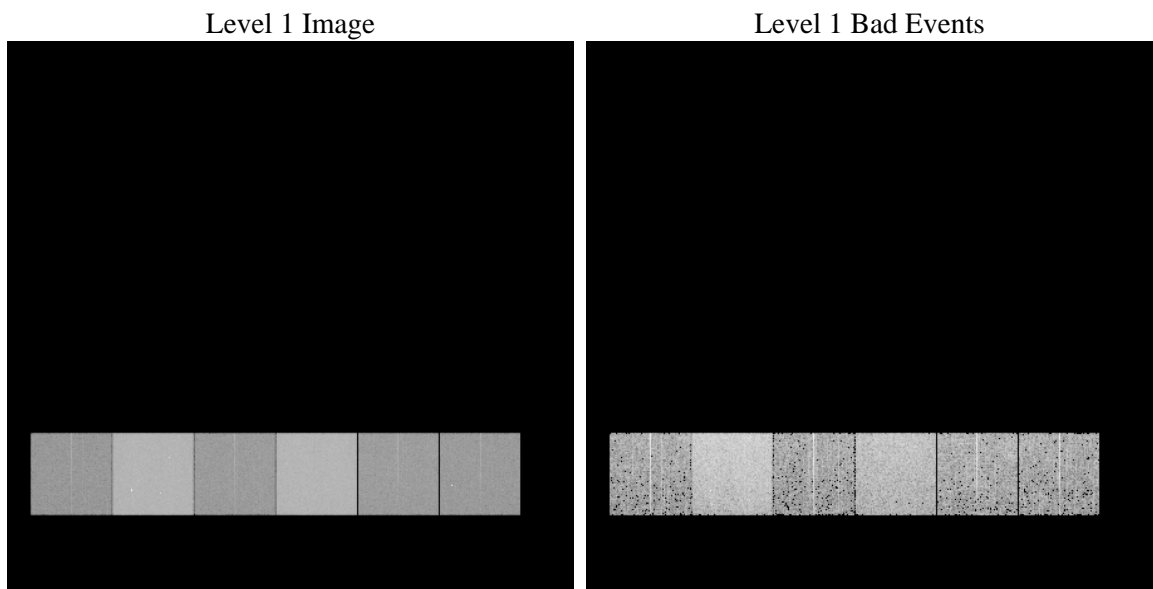
# 1 Front

seq_num	&#160	Sequence number
obs_id	61232	Observation id
title	ACIS-456789 diagnostics	Proposal title
observer	CHANDRA engineering request/realtime commanding	Principal investig
object	&#160	Source name
dtcycle	0	&#160
cycle	P	events from which exps? Prim/Second/Both
ra_targ	0.0	Observer's specified target RA [deg]
dec_targ	0.0	Observer's specified target Dec [deg]
ra_nom	346.81135084629	Nominal RA [deg]
dec_nom	58.227986855685	Nominal Dec [deg]
roll_nom	45.112989991667	Nominal Roll [deg]
revision	3	Processing version of data
ontime	6870.7063776553	Sum of GTIs [s]
livetime	6783.7053564587	Livetime [s]
ontime4	2502.0804516971	Sum of GTIs [s]
ontime5	7366.5318184793	Sum of GTIs [s]
ontime6	2699.4801398814	Sum of GTIs [s]
ontime7	6870.7063776553	Sum of GTIs [s]
ontime8	2799.8699107468	Sum of GTIs [s]
ontime9	2680.1567708552	Sum of GTIs [s]
l2events	1224925	Number of level 2 events

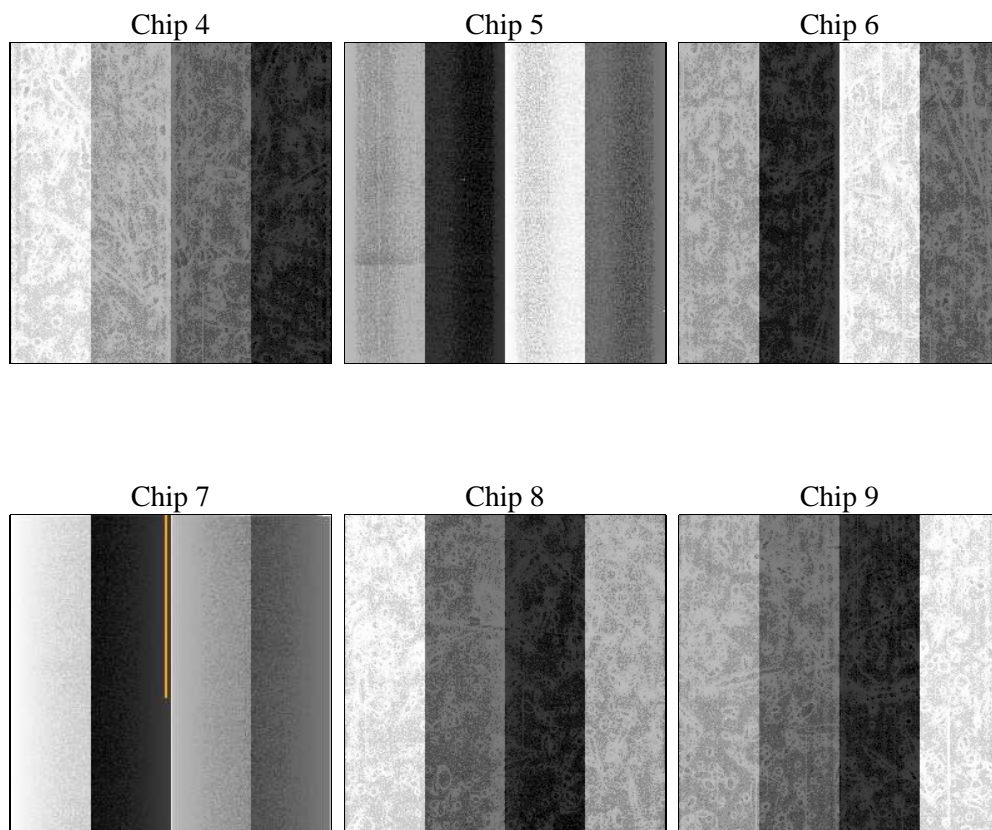
## 2 OBI

### 2.1 OBI

#### 2.1.1 Images



#### 2.1.2 Bias



### 2.1.3 Parameters

obi_num	0	Obi number	sched_exp_time	0.0	[s] Scheduled observation exposure time
ascdsver	8.4.5	Processing system revision	ontime	6870.7063776553	Sum of GTIs [s]
caldsver	4.5.2	&#160	ontime4	2502.0804516971	Sum of GTIs [s]
date	2012-10-05T16:27:40	Date and time of file creation	ontime5	7366.5318184793	Sum of GTIs [s]
revision	3	Processing version of data	ontime6	2699.4801398814	Sum of GTIs [s]
			ontime7	6870.7063776553	Sum of GTIs [s]
			ontime8	2799.8699107468	Sum of GTIs [s]
			ontime9	2680.1567708552	Sum of GTIs [s]
			l1events	1448253	Number of level 1 events

### 2.1.4 Events

	ccd 4	ccd 5	ccd 6	ccd 7	ccd 8	ccd 9		ccd 4	ccd 5	ccd 6	ccd 7	ccd 8	ccd 9
level 1 events	145364	398247	165532	404937	174736	159437	grade 0 events	70586	86635	79205	93415	83186	76622
rejected events	20355	49541	20051	36045	23225	20109		48%	21%	47%	23%	47%	48%
rejected %	14%	12%	12%	8%	13%	12%	grade 1 events	384	335	390	283	416	370
								0%	0%	0%	0%	0%	0%
							grade 2 events	22279	122050	25322	81721	26865	24580
								15%	30%	15%	20%	15%	15%
							grade 3 events	7634	22945	9044	37764	9635	8567
								5%	5%	5%	9%	5%	5%
							grade 4 events	7603	22737	9040	36999	9596	8608
								5%	5%	5%	9%	5%	5%
							grade 5 events	1326	9173	1486	7365	1684	1581
								0%	2%	0%	1%	0%	0%
							grade 6 events	16907	94339	22870	118993	22229	20951
								11%	23%	13%	29%	12%	13%
							grade 7 events	18645	40033	18175	28397	21125	18158
								12%	10%	10%	7%	12%	11%

## 2.2 Compared Parameters

Parameter	Planned	Actual	Parameter	Planned	Actual
Instrument	ACIS	ACIS	Obspar format version number	7	7
Detector	ACIS-456789	ACIS-456789	Obspar file type	PREDICTED	ACTUAL
Grating	NONE	NONE	Obspar update status	NONE	UPDATED
Data mode	FAINT	FAINT	On-chip summing requested	N	N
Observation mode	SECONDARY	SECONDARY	Subarray requested	NONE	NONE
[deg] Pointing RA	0	346.8113508462931	Alternating exposures requested	N	N
[deg] Pointing Dec	0	58.22798685568538	[s] Primary exposure time	0.000000	3.2
[deg] Pointing Roll	0.0	45.11298999166731			
[mm] SIM focus pos	-0.684267	-0.6828225247311905			
[mm] SIM defocus	0	0.8505141146731063			
[mm] SIM translation stage pos	-190.132523	250.466033080201			
[mm] SIM translation stage offset	0	-0.01005468664627074			
[s] Observation start time (MET)	135238533.063	135238532.03829			
Observation start date	2002-04-15T06:15:33	2002-04-15T06:15:32			
[s] Observation end time (MET)	135276872.165	135276871.13985			
Observation end date	2002-04-15T16:54:32	2002-04-15T16:54:31			
Read mode	TIMED	TIMED			

## **2.3 Star Slots**

## **2.4 FID Slots**

## **A Summary**

### **A.1 Status**

V&V Scientist	Beth Sundheim
V&V Date (YYYY-MM-DD)	2012.10.11
V&V Edition	1
V&V Disposition and Status	OK
V&V Charge Time	6.8707063776553

### **A.2 Comments**