

V&V Reference Report

L2 ASCDS Version : 7.6.10

Observation 612 - L2 Version 4
Chandra X-Ray Center

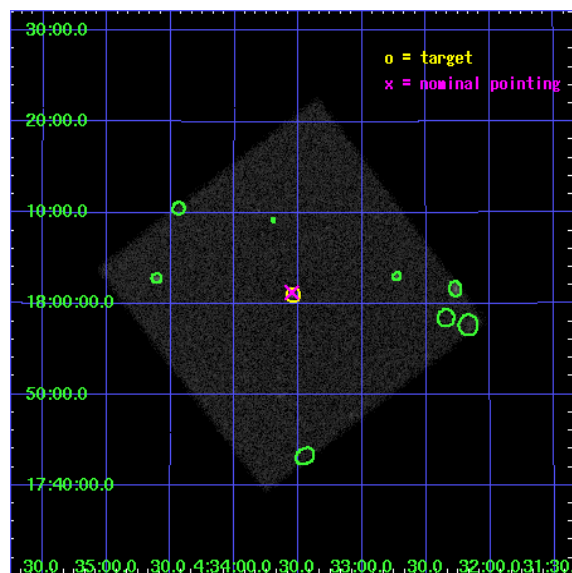
L2 Processing Date : Nov 20 2007

Contents

1	Front	2
2	OBI	3
2.1	OBI	3
2.1.1	Images	3
2.1.2	Parameters	4
2.1.3	Events	4
2.2	Compared Parameters	5
2.3	Aspect	6
2.4	Star Slots	9
2.4.1	Slot 3	9
2.4.2	Slot 4	10
2.4.3	Slot 5	11
2.4.4	Slot 6	12
2.4.5	Slot 7	13
2.5	FID Slots	14
2.5.1	Slot 0	14
2.5.2	Slot 1	15
2.5.3	Slot 2	16
3	Point Sources	17
A	Summary	18
A.1	Status	18
A.2	Comments	18

1 Front

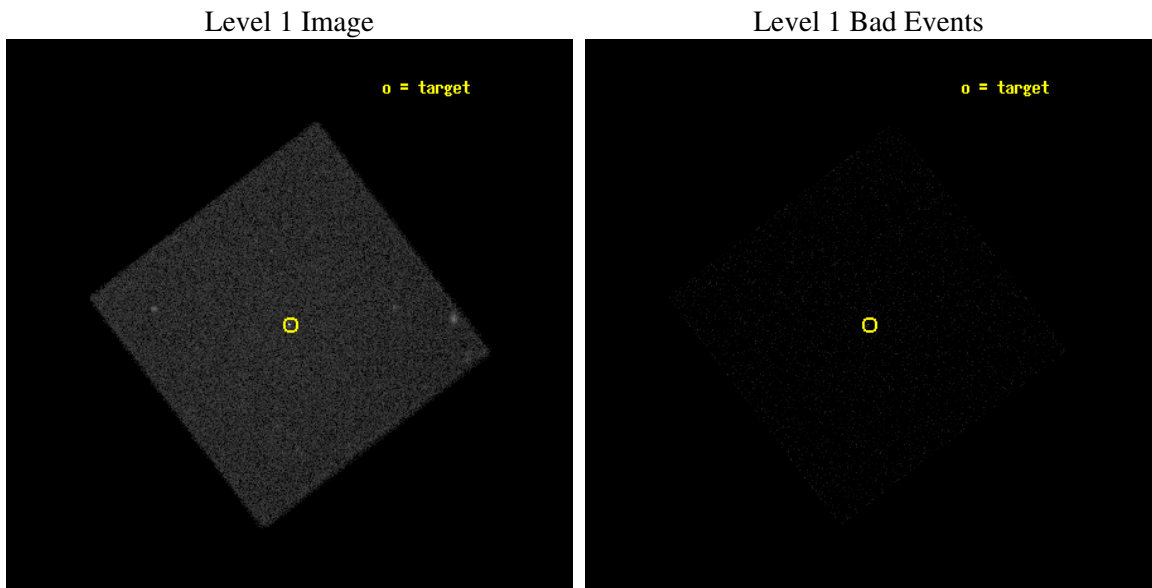
seq_num	200037
obs_id	612
title	THE SOURCE OF X-RAYS IN THE HR 1442 SYSTEM
observer	Prof. Frederick Walter
object	HR 1442
ra_targ	68.38625
dec_targ	18.016667
ra_nom	68.387687604506
dec_nom	18.020614099274
roll_nom	97.632225110683
revision	4
ontime	4679.3814257979
livetime	4658.4738870381
l2events	105819



2 OBI

2.1 OBI

2.1.1 Images



2.1.2 Parameters

obi_num	0
ascdsver	7.6.11.2
caldbver	3.4.1
date	2007-11-21T01:06:17
revision	4

sched_exp_time	4675.000000
ontime	4679.3814257979
l1events	183829

2.1.3 Events

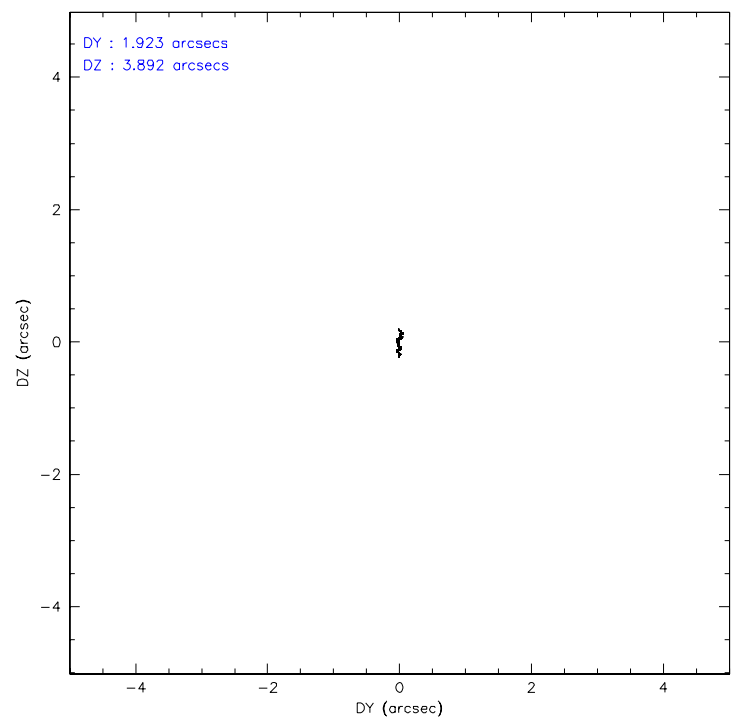
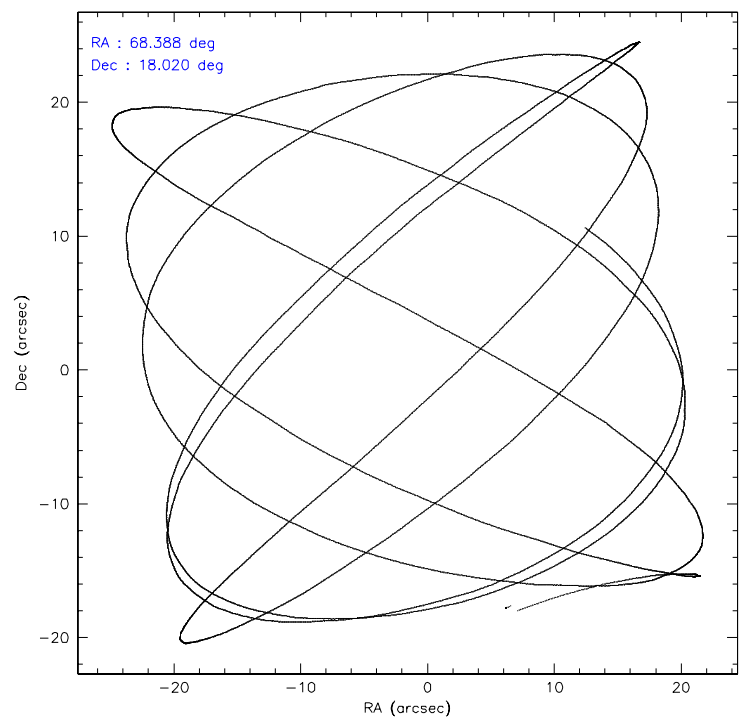
Level 1 Events

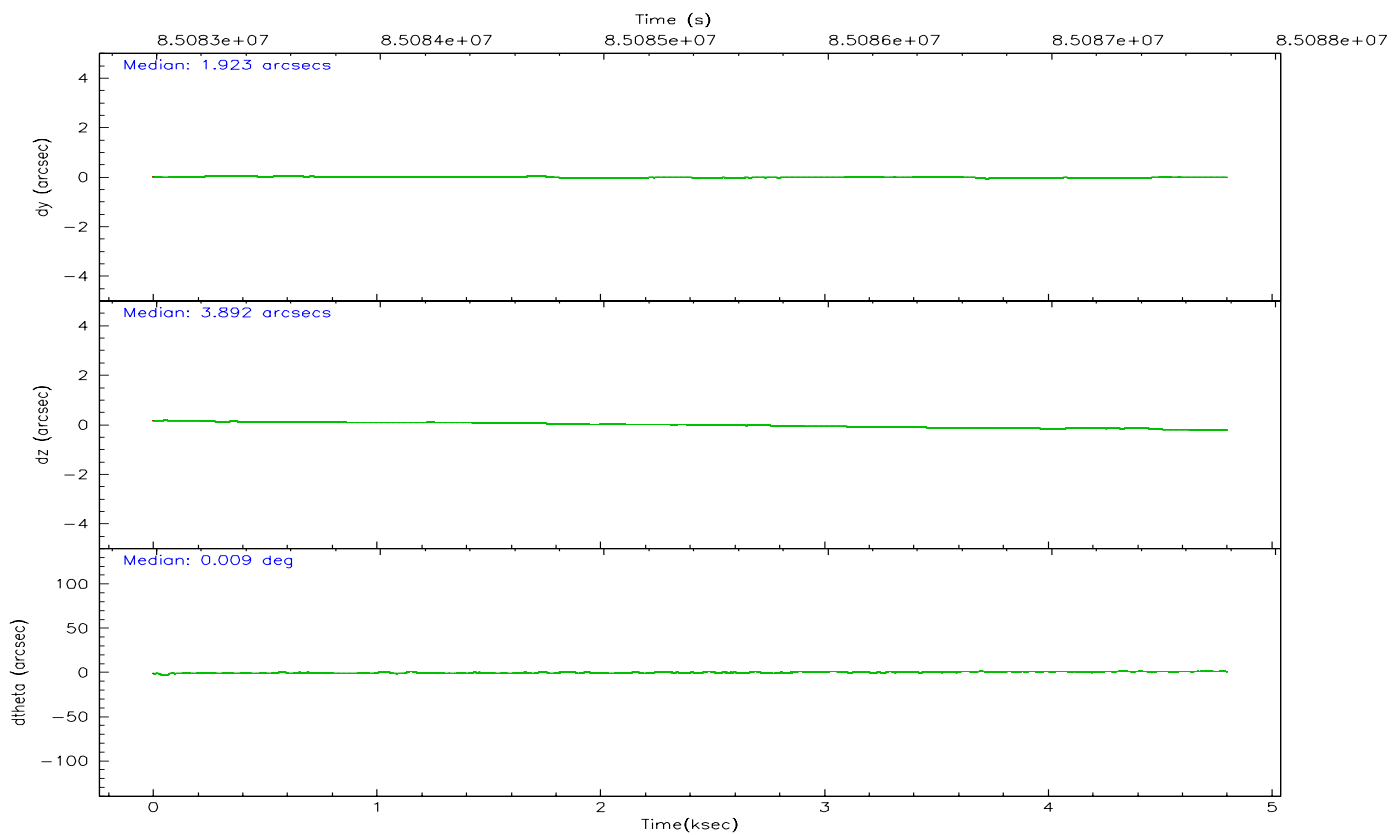
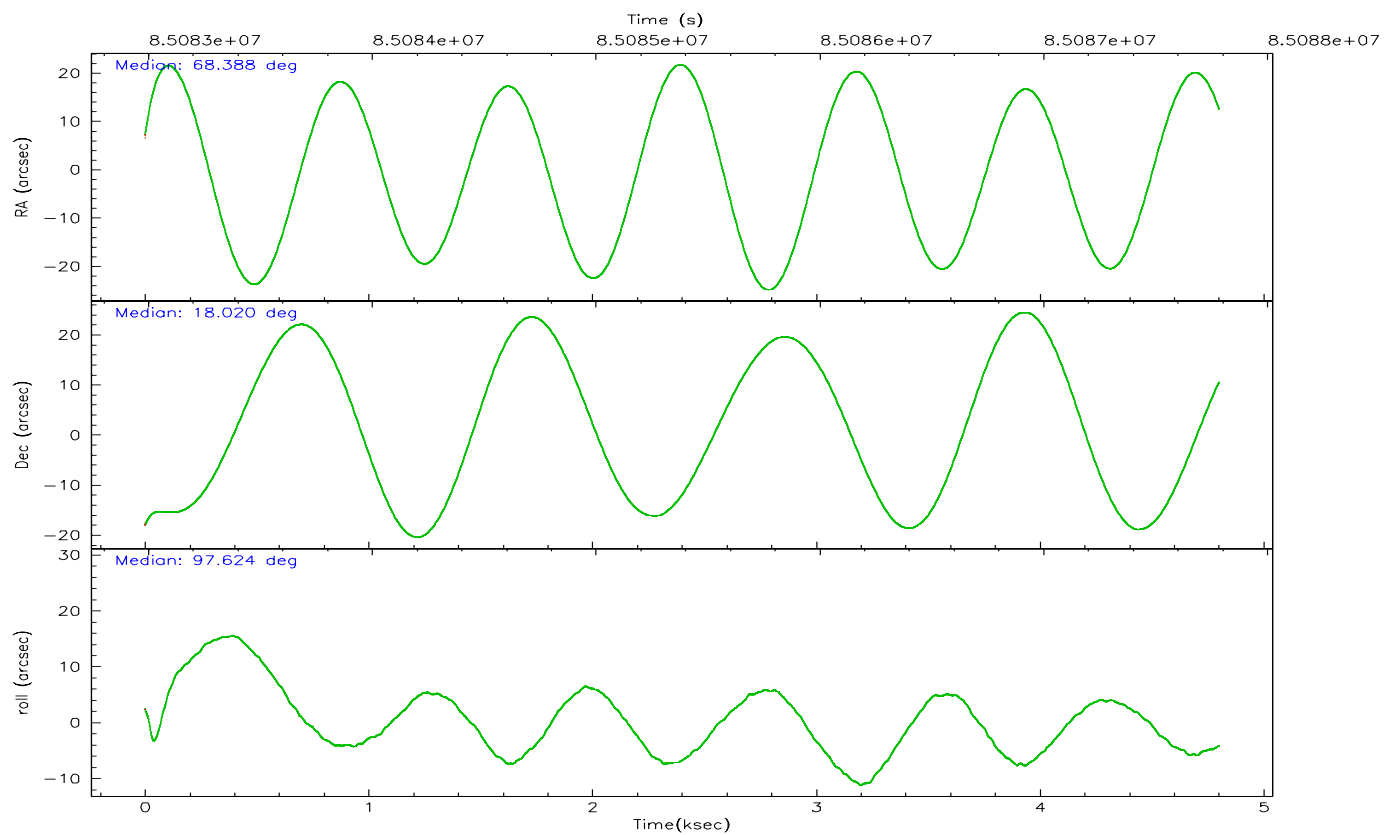
	segment 0
level 1 events	183829
rejected events	25829
rejected %	14%

2.2 Compared Parameters

Parameter	Planned	Actual	Parameter	Planned	Actual
Instrument	HRC	HRC	Obspar format version number	6	6
Detector	HRC-I	HRC-I	Obspar file type	PREDICTED	ACTUAL
Grating	NONE	NONE	Obspar update status	NONE	UPDATED
Data mode	OBSERVING	OBSERVING			
Observation mode	POINTING	POINTING			
Pointing RA	68.405307	68.38768760450616			
Pointing Dec	17.999617	18.02061409927439			
Pointing Roll	97.722290	97.63222511068344			
SIM focus pos (mm)	-1.040293	-1.038866356238299			
SIM defocus (mm)	0	0.001426264420575141			
SIM translation stage pos (mm)	126.985494	126.9829799899862			
SIM translation stage offset (mm)	0	0.002508901615314585			
Observation start time	85083110.184000	85082013.91146301			
Observation start date	2000-09-11T18:10:46	2000-09-11T17:53:33			
Observation end time	85087785.184000	85088517.024207			
Observation end date	2000-09-11T19:28:41	2000-09-11T19:41:57			

2.3 Aspect



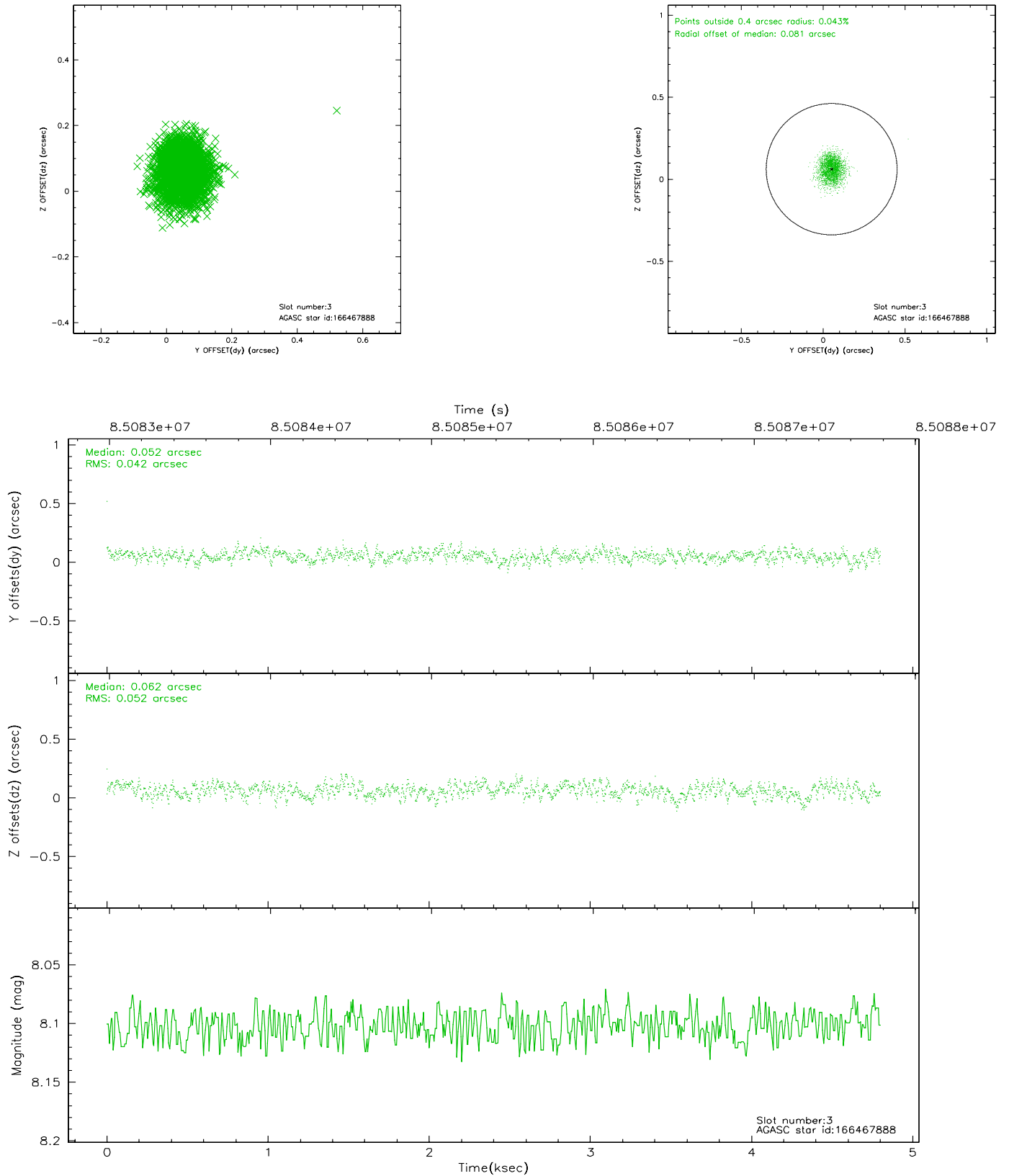


Slot Statistics

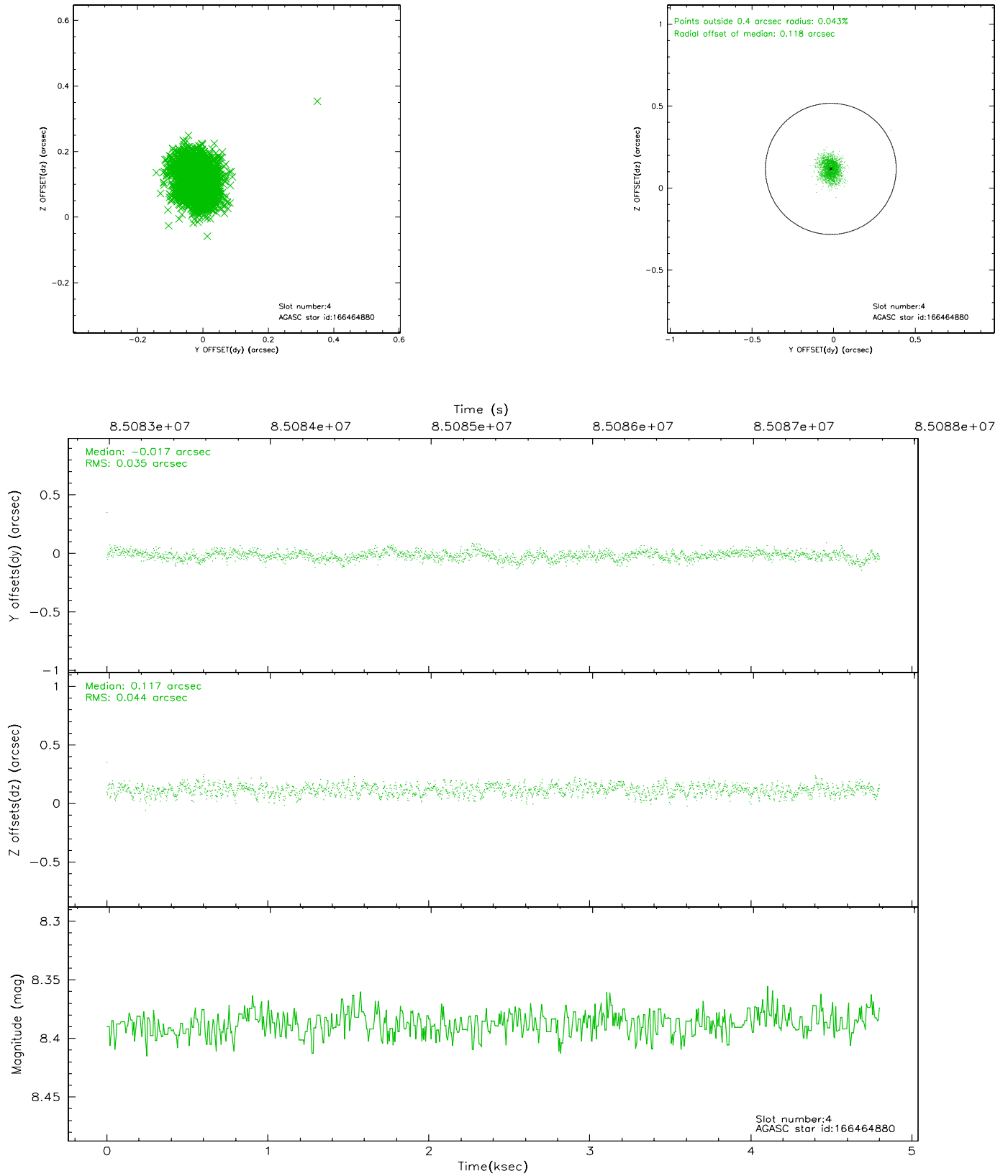
slot	status	id	mag	n_pts	med_dy	med_dz	dr1	dr2	ra	dec	mean_y	mean_z
0	FID	HRC-I-2	7.00	1172	0.044	-0.031	0.007	0.011	0.000000	0.000000	855.29	-1293.25
1	FID	HRC-I-3	7.05	1172	0.048	-0.025	0.007	0.011	0.000000	0.000000	-1185.06	1011.82
2	FID	HRC-I-4	7.00	1172	0.027	-0.031	0.007	0.012	0.000000	0.000000	1284.46	1011.35
3	GUIDE	166467888	8.10	2343	0.052	0.062	0.070	0.112	68.675864	17.748180	-1019.07	-796.38
4	GUIDE	166464880	8.39	2343	-0.017	0.117	0.060	0.097	68.836504	17.817954	-843.46	-1375.70
5	GUIDE	166465472	8.36	2343	-0.114	0.141	0.064	0.110	68.719684	18.413404	1334.21	-1263.19
6	GUIDE	166468240	9.06	2343	0.037	-0.068	0.076	0.129	68.167699	17.861525	-380.50	874.31
7	GUIDE	166338584	9.37	2342	0.041	-0.247	0.095	0.147	67.904616	17.709782	-799.62	1842.79

2.4 Star Slots

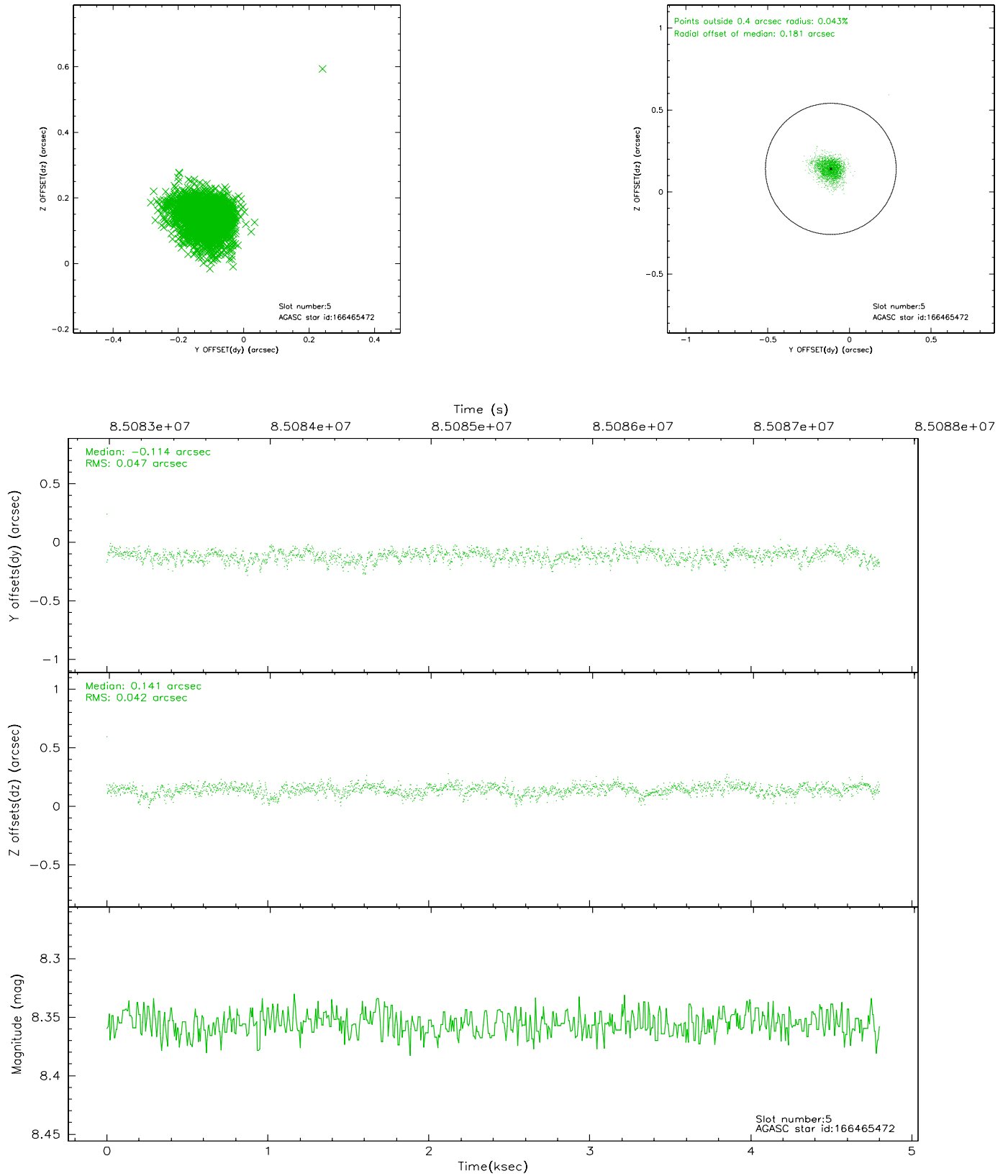
2.4.1 Slot 3



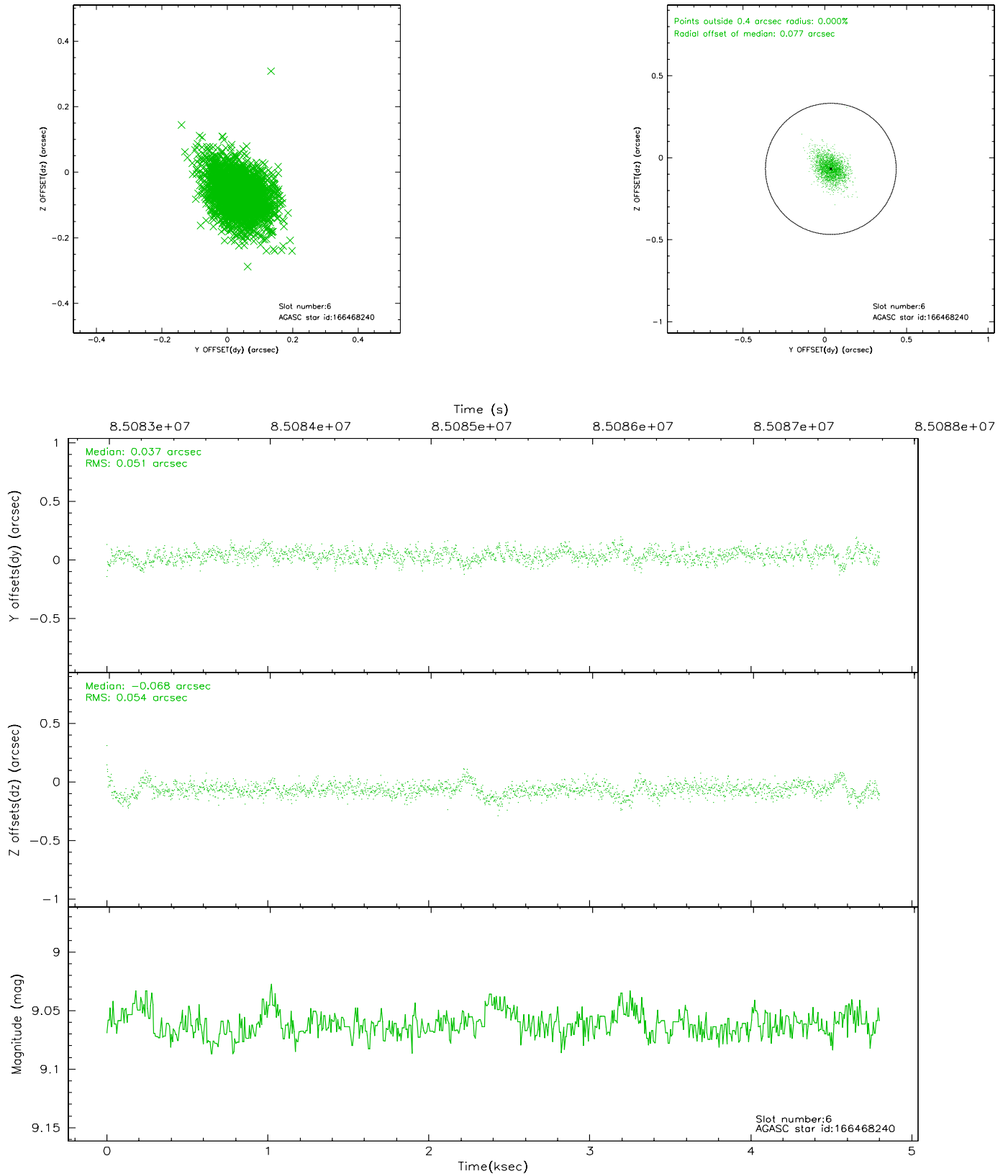
2.4.2 Slot 4



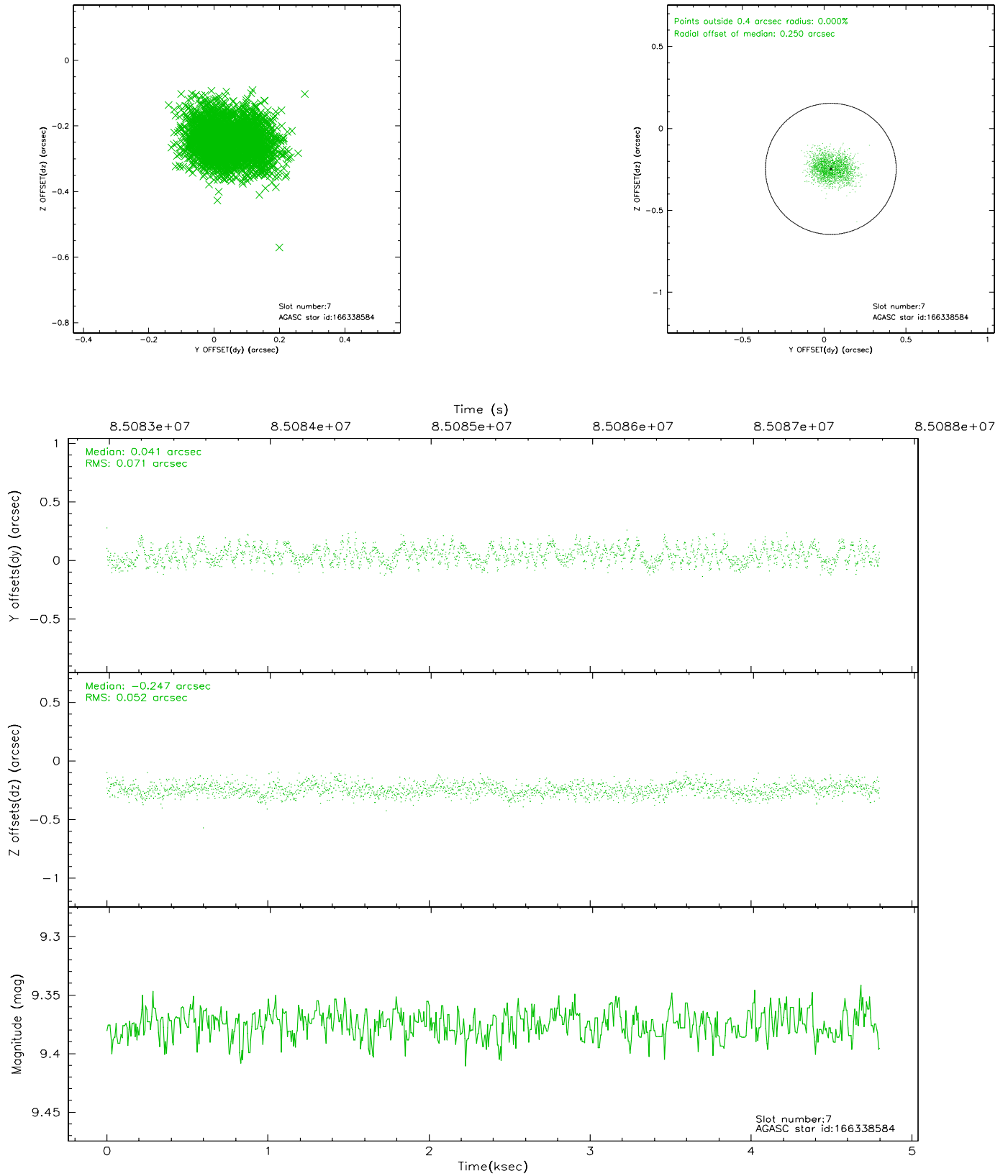
2.4.3 Slot 5



2.4.4 Slot 6

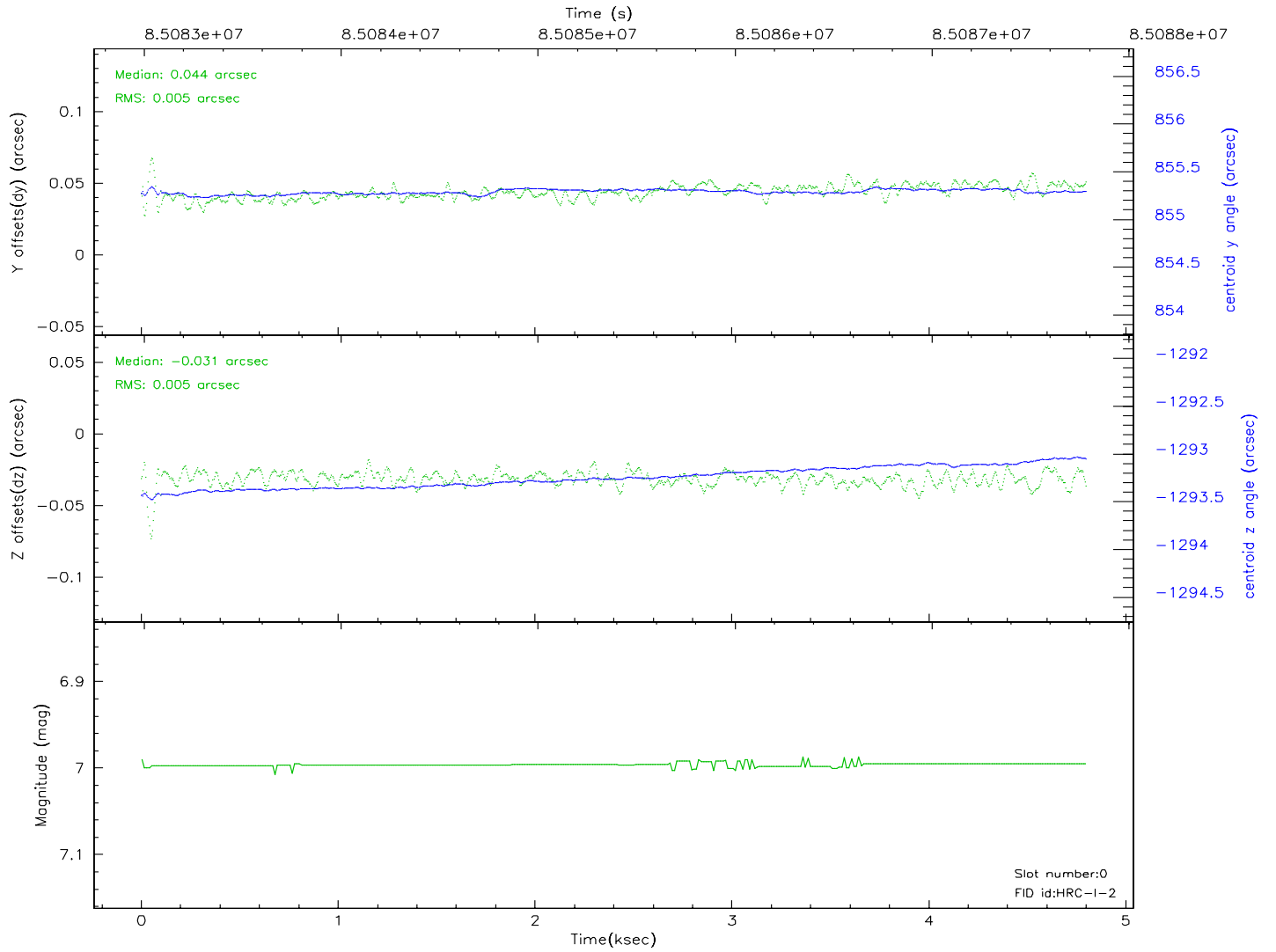
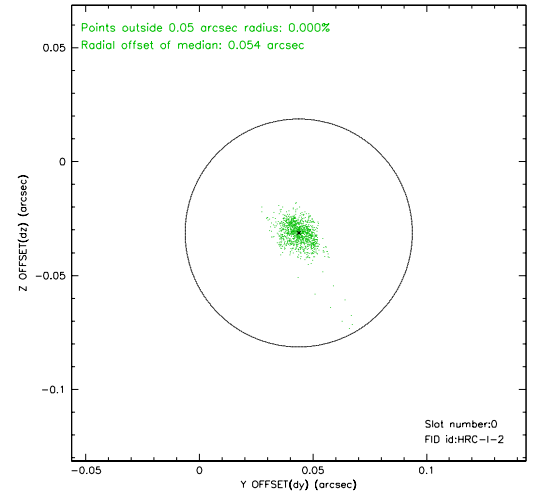
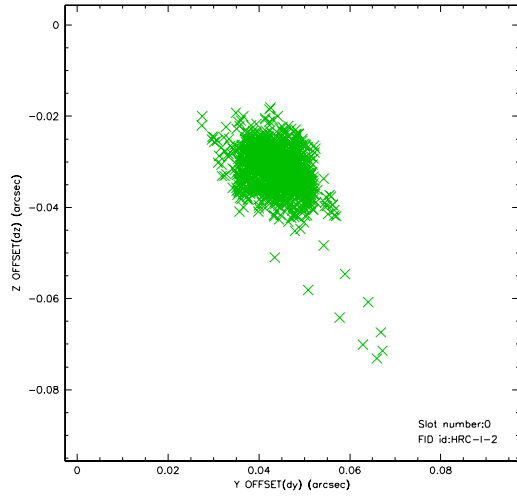


2.4.5 Slot 7

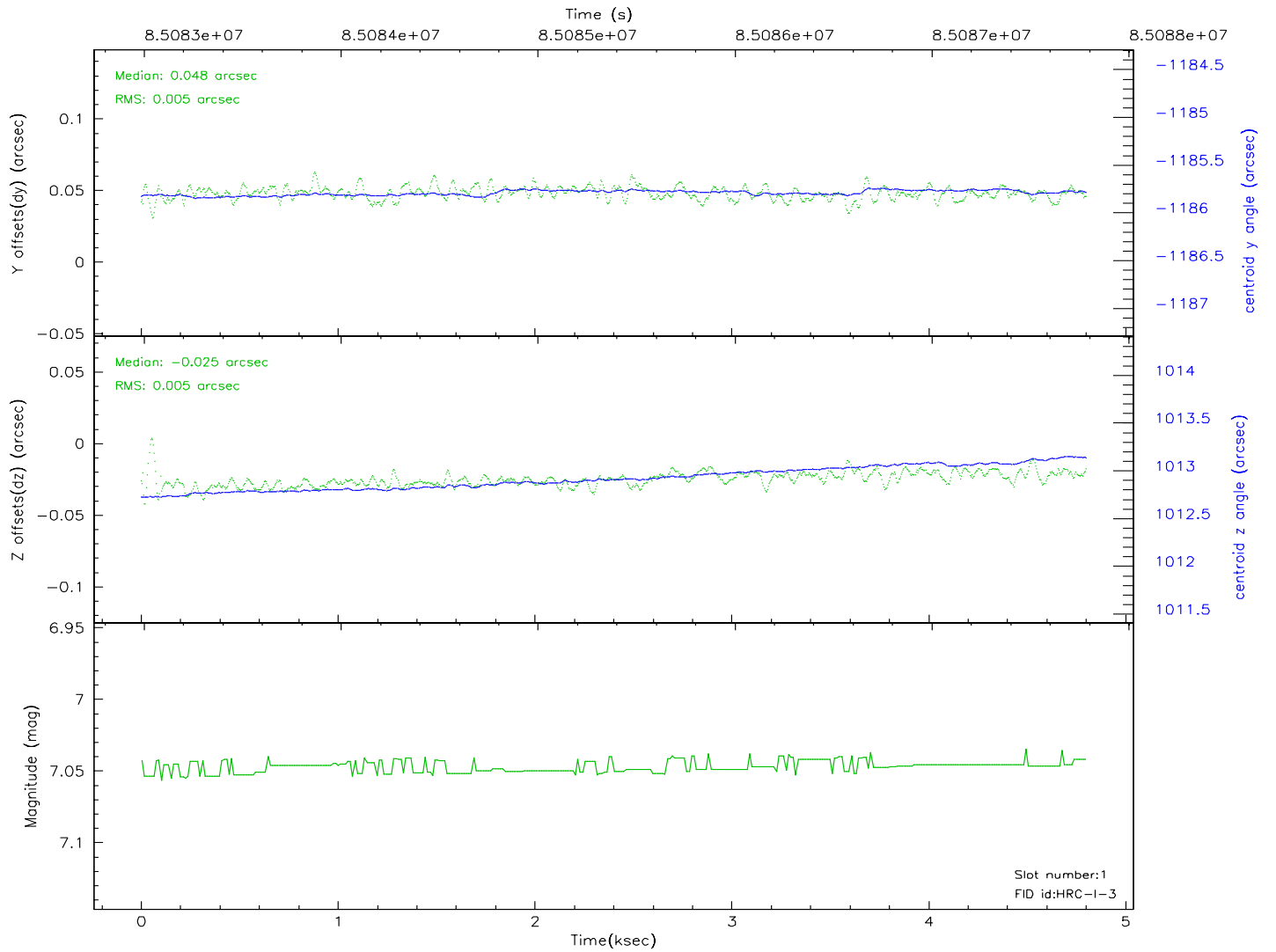
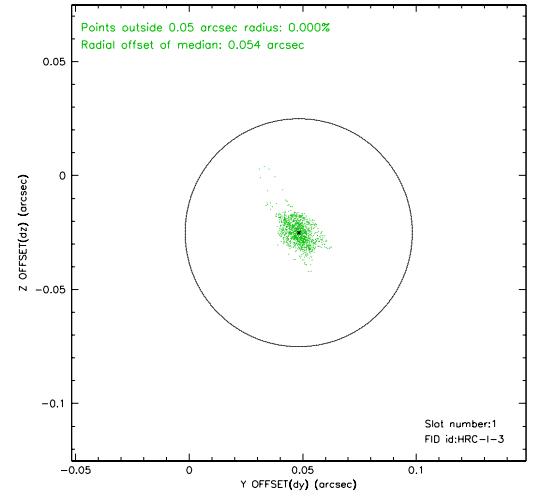
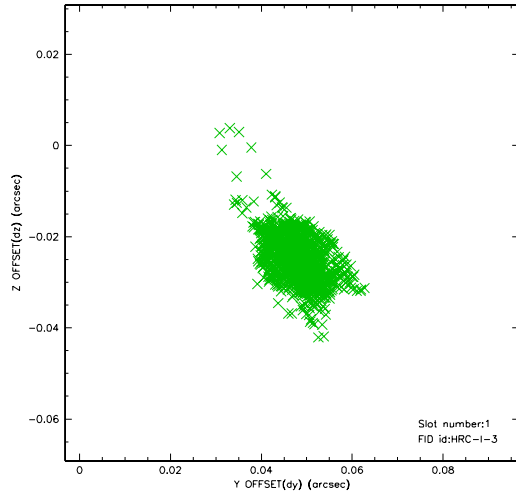


2.5 FID Slots

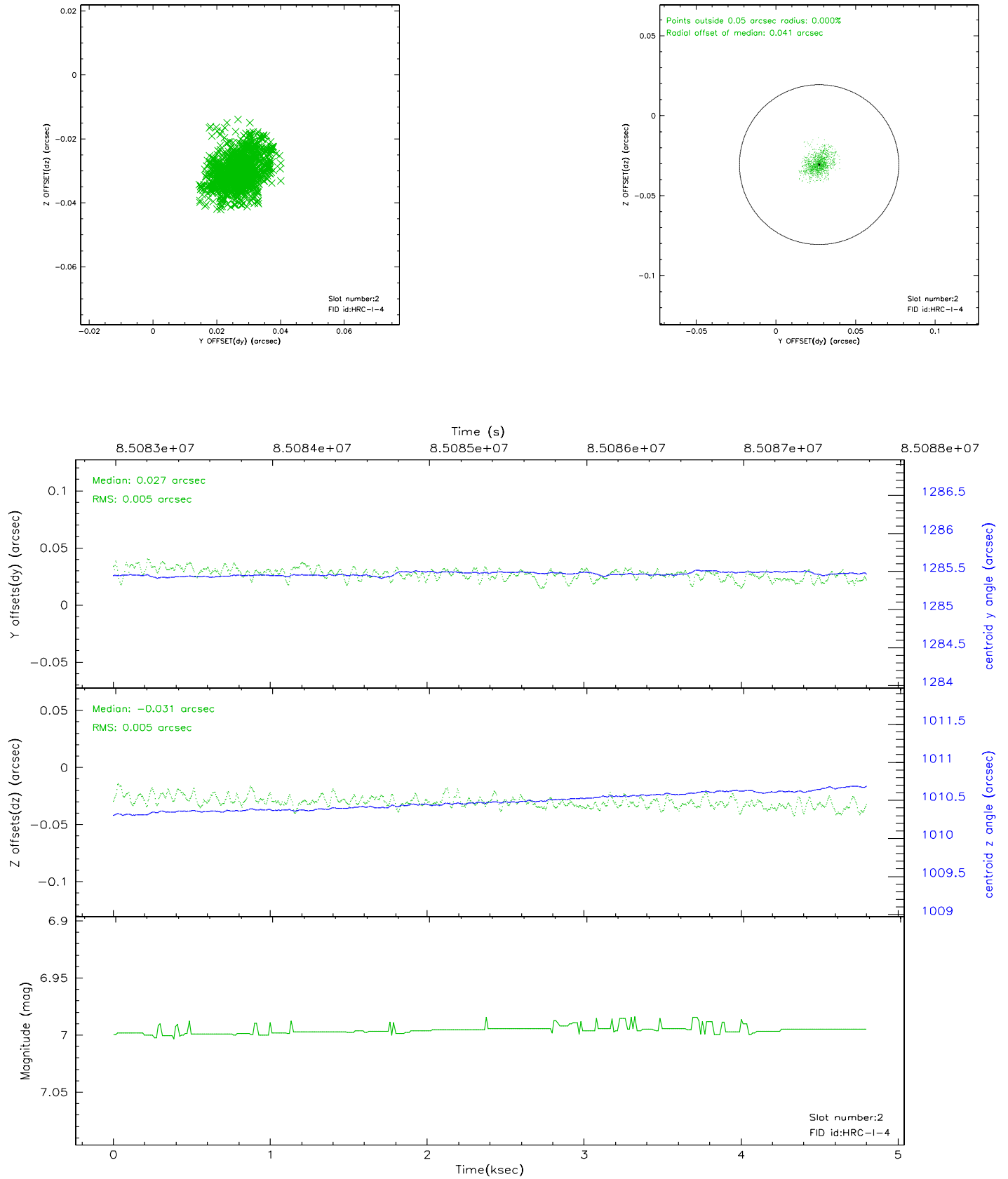
2.5.1 Slot 0



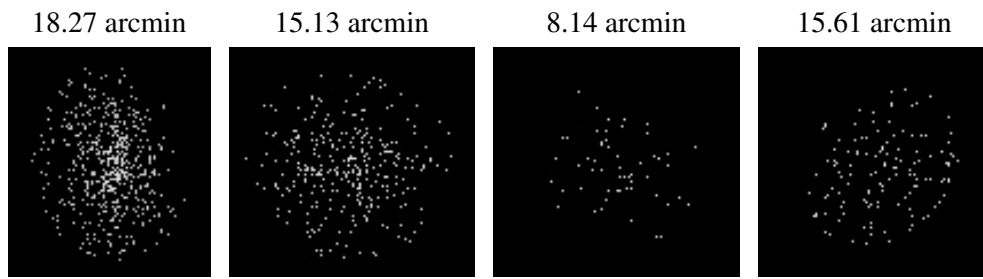
2.5.2 Slot 1



2.5.3 Slot 2



3 Point Sources



A Summary

A.1 Status

V&V Scientist	Beth Sundheim
V&V Date (YYYY-MM-DD)	2007.12.04
V&V Edition	1
V&V Disposition and Status	OK
V&V Charge Time	4.679

A.2 Comments

The current observation has been reprocessed as part of Repro III ('C' supplement) the purpose of which is to update all HRC-I ObsIDs since Jan 2000 to the latest calibrations available for that configuration. Specifically, we are updating the DEGAP solution and the Gain Maps applied. For more information see the Repro IIIC web page at:

<http://asc.harvard.edu/cda/repro3.html#IIIC>

and the associated links.