

# V&V Reference Report

## L2 ASCDS Version : 7.6.9

Observation 61172 - L2 Version 001  
Chandra X-Ray Center

L2 Processing Date : Sep 19 2006

## Contents

<b>1</b>	<b>Front</b>	<b>2</b>
<b>2</b>	<b>OBI</b>	<b>3</b>
2.1	OBI . . . . .	3
2.1.1	Images . . . . .	3
2.1.2	Bias . . . . .	3
2.1.3	Parameters . . . . .	4
2.1.4	Events . . . . .	4
2.2	Compared Parameters . . . . .	5
2.3	Aspect . . . . .	6
2.4	Star Slots . . . . .	8
2.5	FID Slots . . . . .	8
<b>A</b>	<b>Summary</b>	<b>9</b>
A.1	Status . . . . .	9
A.2	Comments . . . . .	9

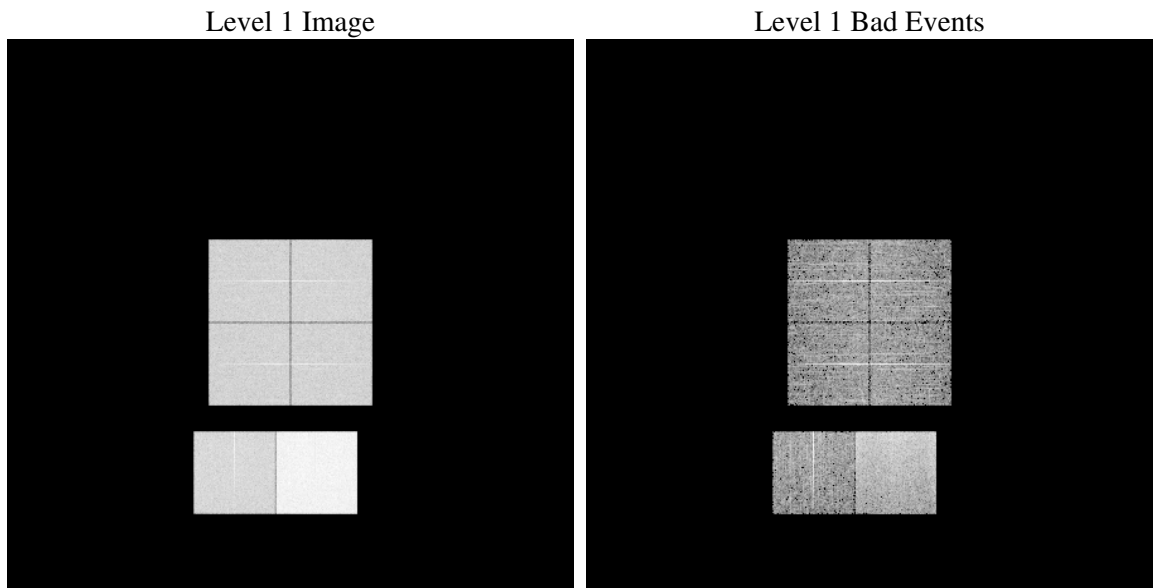
# 1 Front

seq_num	&#160
obs_id	61172
title	ACIS-012367 diagnostics
observer	CHANDRA engineering request/realtime commanding
object	&#160
dtcycle	0
cycle	P
ra_targ	0.0
dec_targ	0.0
ra_nom	180.00540484544
dec_nom	-5.7281049771689
roll_nom	248.03772551934
revision	2
ontime	7795.1999709606
livetime	7696.4924552224
ontime0	3407.479203999
ontime1	3471.7365384698
ontime2	3286.998036176
ontime3	3319.8903390765
ontime6	3692.1245389581
ontime7	7795.1999709606
l2events	1205201

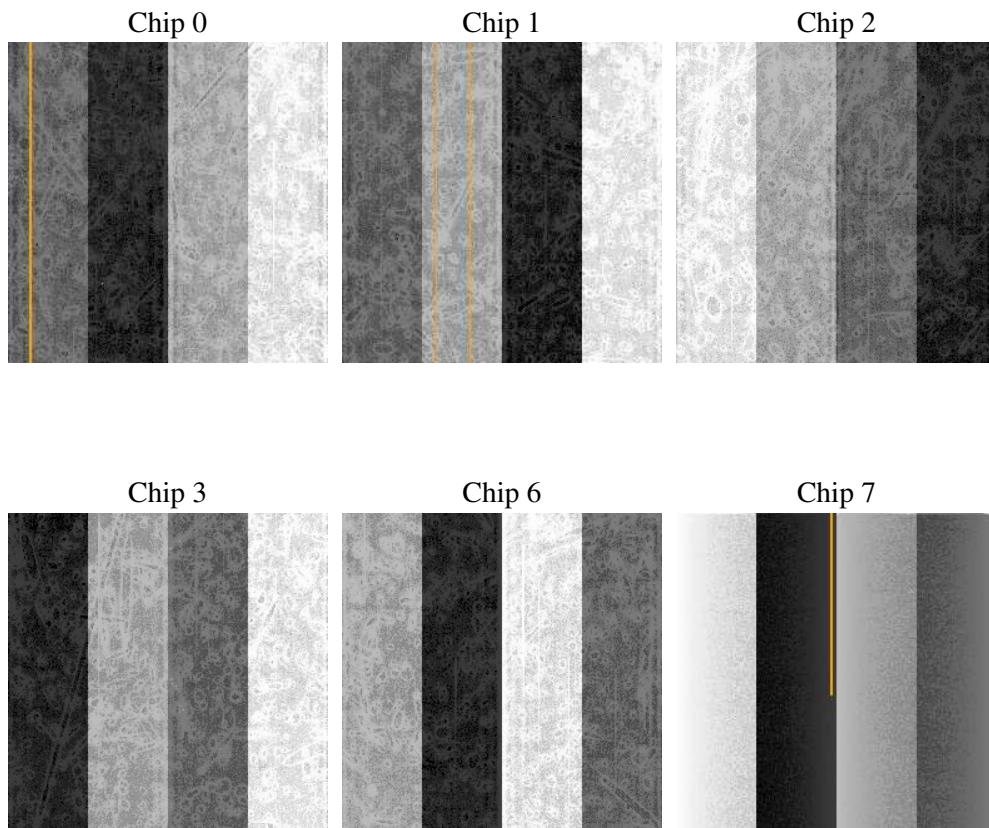
## 2 OBI

### 2.1 OBI

#### 2.1.1 Images



#### 2.1.2 Bias



### 2.1.3 Parameters

obi_num	1
ascdsver	7.6.9
caldbver	3.2.3
date	2006-09-19T08:23:17
revision	2

sched_exp_time	0.0
ontime	7797.8516186476
ontime0	3409.5670677125
ontime1	3474.3881861567
ontime2	3289.6496838629
ontime3	3322.0602827966
ontime6	3694.776186645
ontime7	7797.8516186476
l1events	1438171

### 2.1.4 Events

	ccd 0	ccd 1	ccd 2	ccd 3	ccd 6	ccd 7
level 1 events	192750	196998	189289	191496	220490	447148
rejected events	24468	25112	23995	25284	27626	54416
rejected %	12%	12%	12%	13%	12%	12%

	ccd 0	ccd 1	ccd 2	ccd 3	ccd 6	ccd 7
grade 0 events	92388	94968	91859	92644	105267	73949
	47%	48%	48%	48%	47%	16%
grade 1 events	511	487	483	494	489	169
	0%	0%	0%	0%	0%	0%
grade 2 events	30045	30301	29165	29242	33784	116753
	15%	15%	15%	15%	15%	26%
grade 3 events	10681	10860	10485	10654	11998	29925
	5%	5%	5%	5%	5%	6%
grade 4 events	10670	11073	10456	10644	11702	29544
	5%	5%	5%	5%	5%	6%
grade 5 events	1651	1725	1514	1751	1994	7454
	0%	0%	0%	0%	0%	1%
grade 6 events	24673	24842	23515	23188	30271	142717
	12%	12%	12%	12%	13%	31%
grade 7 events	22131	22742	21812	22879	24985	46637
	11%	11%	11%	11%	11%	10%

## 2.2 Compared Parameters

Parameter	Planned	Actual	Parameter	Planned	Actual
Instrument	ACIS	ACIS	Obspar format version number	6	6
Detector	ACIS-012367	ACIS-012367	Obspar file type	PREDICTED	ACTUAL
Grating	NONE	NONE	Obspar update status	NONE	UPDATED
Data mode	FAINT	FAINT	On-chip summing requested	N	N
Observation mode	SECONDARY	SECONDARY	Subarray requested	NONE	NONE
Pointing RA	0	180.0054048454398	Alternating exposures requested	N	N
Pointing Dec	0	-5.728104977168871	Primary exposure time	3.2	3.2
Pointing Roll	0.0	248.0377255193357			
SIM focus pos (mm)	-0.782348	-0.6828225247311905			
SIM defocus (mm)	0	0.8505141146731063			
SIM translation stage pos (mm)	-233.592463	250.466033080201			
SIM translation stage offset (mm)	0	-0.01005468664627074			
Observation start time	139807960.699296	139807959.6746			
Observation start date	2002-06-07T03:32:41	2002-06-07T03:32:39			
Observation end time	139844805.350817	139844804.32611			
Observation end date	2002-06-07T13:46:45	2002-06-07T13:46:44			
Read mode	TIMED	TIMED			

## 2.3 Aspect



## **2.4 Star Slots**

## **2.5 FID Slots**



## A Summary

### A.1 Status

V&V Scientist	Jen Lauer
V&V Date (YYYY-MM-DD)	2006.09.19
V&V Edition	1
V&V Disposition and Status	OK
V&V Charge Time	7.79519997

### A.2 Comments