

# V&V Reference Report

## L2 ASCDS Version : 8.4.5

Observation 61092 - L2 Version 3  
Chandra X-Ray Center

L2 Processing Date : Oct 12 2012

## Contents

<b>1</b>	<b>Front</b>	<b>2</b>
<b>2</b>	<b>OBI</b>	<b>3</b>
2.1	OBI . . . . .	3
2.1.1	Images . . . . .	3
2.1.2	Bias . . . . .	3
2.1.3	Parameters . . . . .	4
2.1.4	Events . . . . .	4
2.2	Compared Parameters . . . . .	5
2.3	Star Slots . . . . .	6
2.4	FID Slots . . . . .	6
<b>A</b>	<b>Summary</b>	<b>7</b>
A.1	Status . . . . .	7
A.2	Comments . . . . .	7

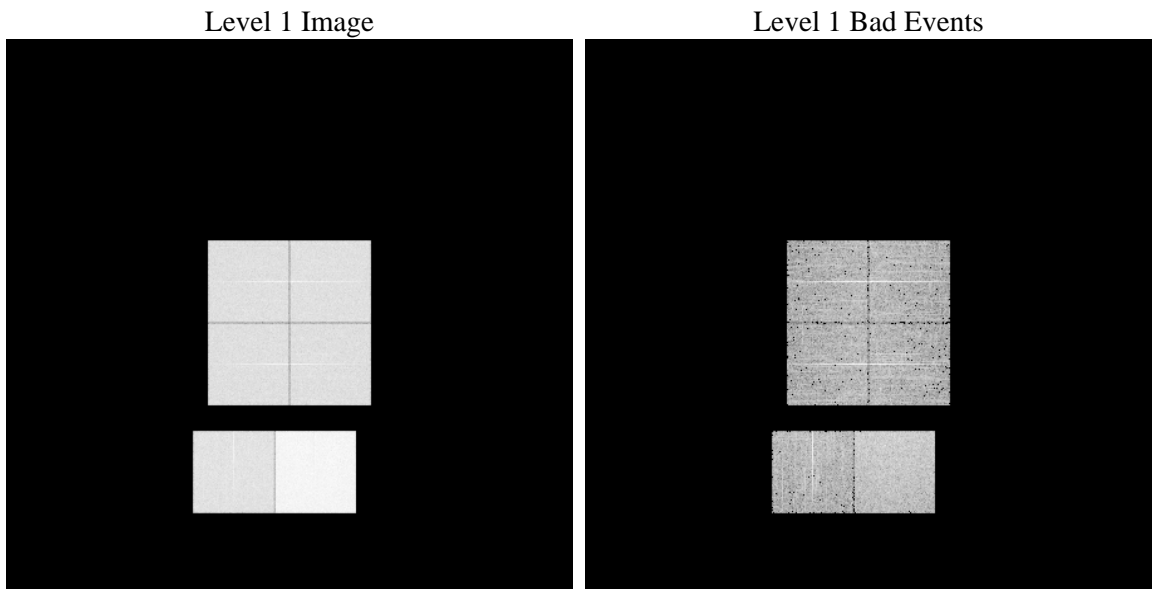
# 1 Front

seq_num	&#160	Sequence number
obs_id	61092	Observation id
title	ACIS-012367 diagnostics	Proposal title
observer	CHANDRA engineering request/realtime commanding	Principal investig
object	&#160	Source name
dtcycle	0	&#160
cycle	P	events from which exps? Prim/Second/Both
ra_targ	0.0	Observer's specified target RA [deg]
dec_targ	0.0	Observer's specified target Dec [deg]
ra_nom	349.8739003139	Nominal RA [deg]
dec_nom	2.5118146783191	Nominal Dec [deg]
roll_nom	122.76719869158	Nominal Roll [deg]
revision	3	Processing version of data
ontime	8385.8111616671	Sum of GTIs [s]
livetime	8279.6249714088	Livetime [s]
ontime0	3944.3351188004	Sum of GTIs [s]
ontime1	4016.8934950531	Sum of GTIs [s]
ontime2	3841.8376509249	Sum of GTIs [s]
ontime3	3840.6226456463	Sum of GTIs [s]
ontime6	4187.4112658799	Sum of GTIs [s]
ontime7	8385.8111616671	Sum of GTIs [s]
l2events	1309493	Number of level 2 events

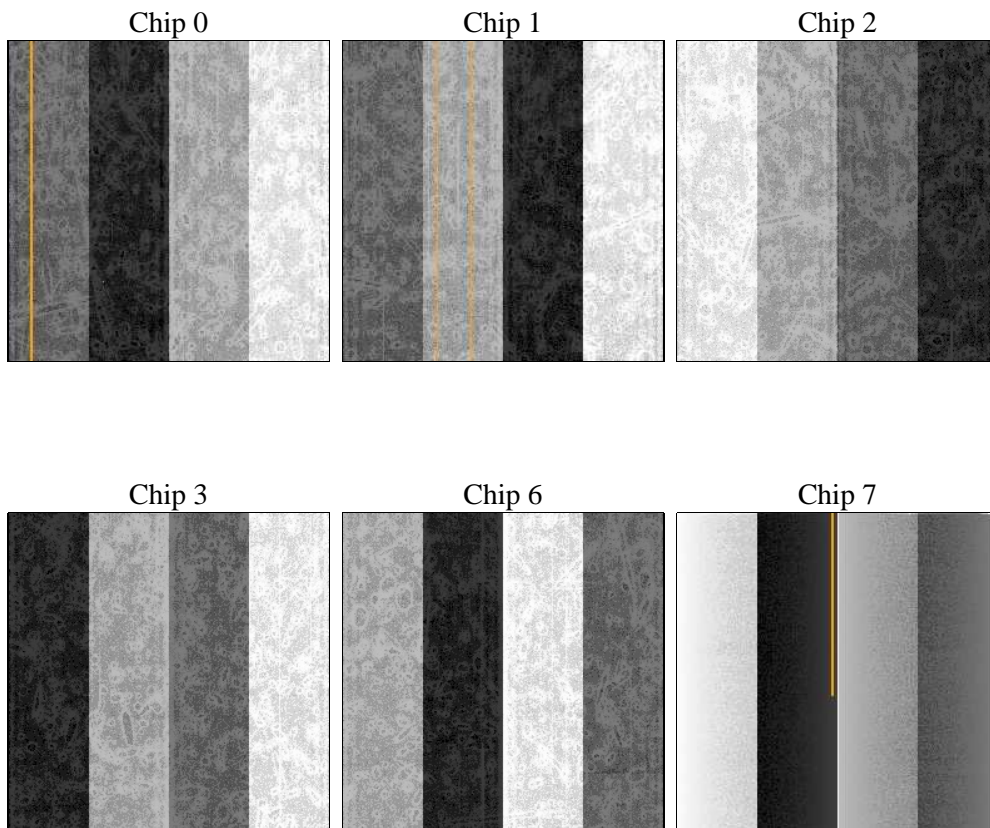
## 2 OBI

### 2.1 OBI

#### 2.1.1 Images



#### 2.1.2 Bias



### 2.1.3 Parameters

obi_num	0	Obi number	sched_exp_time	0.0	[s] Scheduled observation exposure time
ascdsver	8.4.5	Processing system revision	ontime	8385.8111616671	Sum of GTIs [s]
caldbver	4.5.2	&#160	ontime0	3944.3351188004	Sum of GTIs [s]
date	2012-10-12T10:31:39	Date and time of file creation	ontime1	4016.8934950531	Sum of GTIs [s]
revision	3	Processing version of data	ontime2	3841.8376509249	Sum of GTIs [s]
			ontime3	3840.6226456463	Sum of GTIs [s]
			ontime6	4187.4112658799	Sum of GTIs [s]
			ontime7	8385.8111616671	Sum of GTIs [s]
			l1events	1555708	Number of level 1 events

### 2.1.4 Events

	ccd 0	ccd 1	ccd 2	ccd 3	ccd 6	ccd 7		ccd 0	ccd 1	ccd 2	ccd 3	ccd 6	ccd 7
level 1 events	213836	218687	212968	212657	237966	459594	grade 0 events	104739	105456	106265	105662	114601	104468
rejected events	27410	28277	28032	28370	30425	46011		48%	48%	49%	49%	48%	22%
rejected %	12%	12%	13%	13%	12%	10%	grade 1 events	544	505	582	588	527	255
								0%	0%	0%	0%	0%	0%
							grade 2 events	32154	34148	30908	30930	35864	92518
								15%	15%	14%	14%	15%	20%
							grade 3 events	12050	12167	11963	11884	12901	41822
								5%	5%	5%	5%	5%	9%
							grade 4 events	11913	12360	11986	12125	12939	41225
								5%	5%	5%	5%	5%	8%
							grade 5 events	1864	1912	1714	1861	2112	8330
								0%	0%	0%	0%	0%	1%
							grade 6 events	27150	28092	25680	25214	33321	137520
								12%	12%	12%	11%	14%	29%
							grade 7 events	23422	24047	23870	24393	25701	33456
								10%	10%	11%	11%	10%	7%

## 2.2 Compared Parameters

Parameter	Planned	Actual	Parameter	Planned	Actual
Instrument	ACIS	ACIS	Obspar format version number	7	7
Detector	ACIS-012367	ACIS-012367	Obspar file type	PREDICTED	ACTUAL
Grating	NONE	NONE	Obspar update status	NONE	UPDATED
Data mode	FAINT	FAINT	On-chip summing requested	N	N
Observation mode	SECONDARY	SECONDARY	Subarray requested	NONE	NONE
[deg] Pointing RA	0	349.8739003139	Alternating exposures requested	N	N
[deg] Pointing Dec	0	2.511814678319125	[s] Primary exposure time	0.000000	3.2
[deg] Pointing Roll	0.0	122.7671986915809			
[mm] SIM focus pos	-0.782348	-0.6828225247311905			
[mm] SIM defocus	0	0.8505141146731063			
[mm] SIM translation stage pos	-233.592463	250.466033080201			
[mm] SIM translation stage offset	0	-0.01005468664627074			
[s] Observation start time (MET)	145100195.816	145100194.79174			
Observation start date	2002-08-07T09:36:36	2002-08-07T09:36:34			
[s] Observation end time (MET)	145122860.617	145122859.59267			
Observation end date	2002-08-07T15:54:21	2002-08-07T15:54:19			
Read mode	TIMED	TIMED			

## 2.3 Star Slots

## 2.4 FID Slots

## A Summary

### A.1 Status

V&V Scientist	Beth Sundheim
V&V Date (YYYY-MM-DD)	2012.10.22
V&V Edition	1
V&V Disposition and Status	OK
V&V Charge Time	8.3858111616671

### A.2 Comments