

V&V Reference Report

L2 ASCDS Version : 8.4.5

Observation 60642 - L2 Version 3
Chandra X-Ray Center

L2 Processing Date : Nov 1 2012

Contents

1	Front	2
2	OBI	3
2.1	OBI	3
2.1.1	Images	3
2.1.2	Bias	3
2.1.3	Parameters	4
2.1.4	Events	4
2.2	Compared Parameters	5
2.3	Star Slots	6
2.4	FID Slots	6
A	Summary	7
A.1	Status	7
A.2	Comments	7

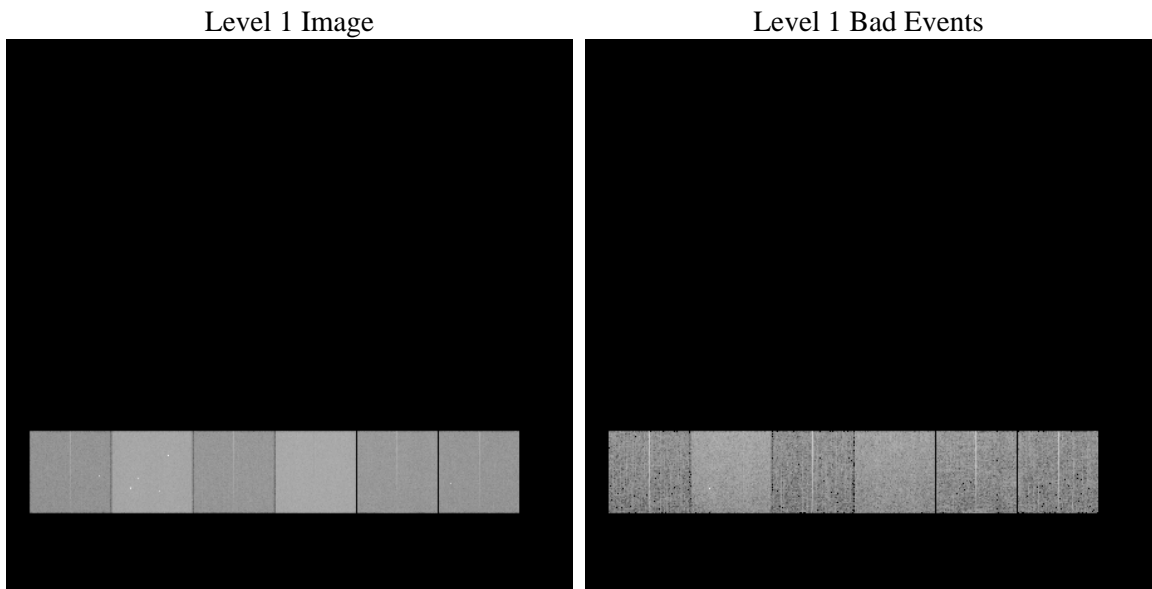
1 Front

seq_num	 	Sequence number
obs_id	60642	Observation id
title	ACIS-456789 diagnostics	Proposal title
observer	CHANDRA engineering request/realtime commanding	Principal investig
object	 	Source name
dtcycle	0	
cycle	P	events from which exps? Prim/Second/Both
ra_targ	0.0	Observer's specified target RA [deg]
dec_targ	0.0	Observer's specified target Dec [deg]
ra_nom	300.02583879684	Nominal RA [deg]
dec_nom	-32.981311921173	Nominal Dec [deg]
roll_nom	7.9864234940753	Nominal Roll [deg]
revision	3	Processing version of data
ontime	9730.8210776448	Sum of GTIs [s]
livetime	9607.6035619627	Livetime [s]
ontime4	4576.3364720345	Sum of GTIs [s]
ontime5	9730.7800376415	Sum of GTIs [s]
ontime6	5046.282582432	Sum of GTIs [s]
ontime7	9730.8210776448	Sum of GTIs [s]
ontime8	5185.645718962	Sum of GTIs [s]
ontime9	4945.8118962348	Sum of GTIs [s]
l2events	1436514	Number of level 2 events

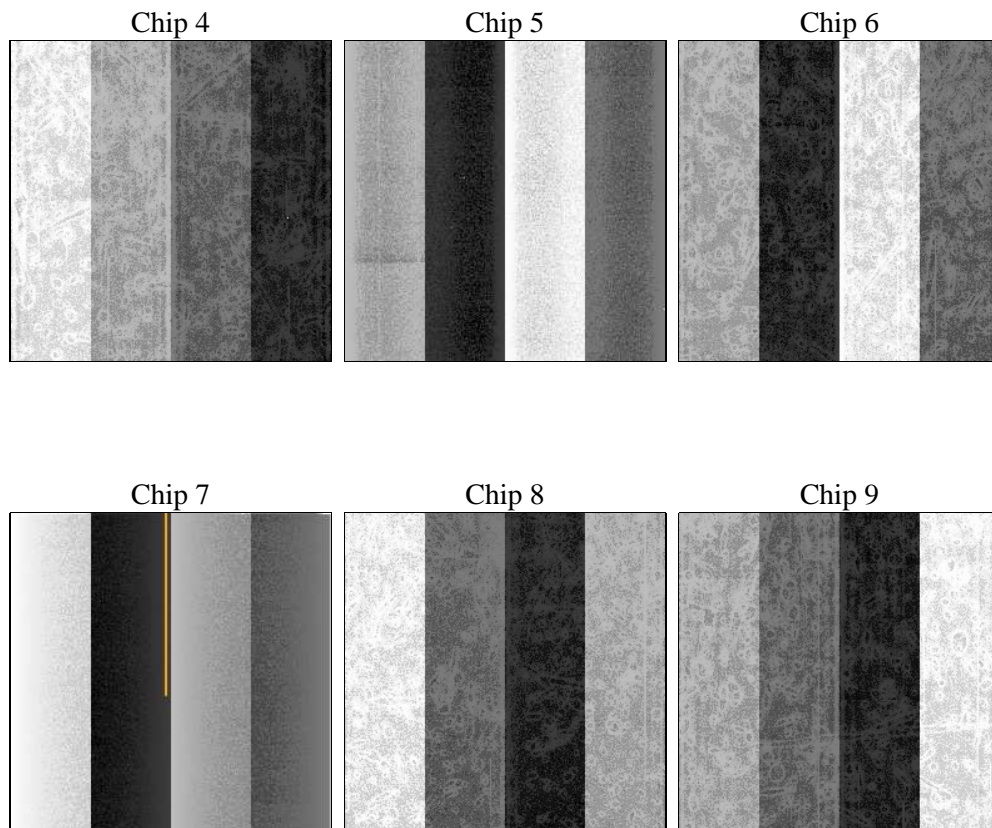
2 OBI

2.1 OBI

2.1.1 Images



2.1.2 Bias



2.1.3 Parameters

obi_num	0	Obi number	sched_exp_time	0.0	[s] Scheduled observation exposure time
ascdsver	8.4.5	Processing system revision	ontime	9730.8210776448	Sum of GTIs [s]
caldbver	4.5.2	 	ontime4	4576.3364720345	Sum of GTIs [s]
date	2012-11-01T11:15:15	Date and time of file creation	ontime5	9730.7800376415	Sum of GTIs [s]
revision	3	Processing version of data	ontime6	5046.282582432	Sum of GTIs [s]
			ontime7	9730.8210776448	Sum of GTIs [s]
			ontime8	5185.645718962	Sum of GTIs [s]
			ontime9	4945.8118962348	Sum of GTIs [s]
			l1events	1765969	Number of level 1 events

2.1.4 Events

	ccd 4	ccd 5	ccd 6	ccd 7	ccd 8	ccd 9		ccd 4	ccd 5	ccd 6	ccd 7	ccd 8	ccd 9
level 1 events	204150	410099	235111	442825	248859	224925	grade 0 events	99104	85687	109215	97959	115014	105053
rejected events	33971	61820	34570	50982	39093	34484		48%	20%	46%	22%	46%	46%
rejected %	16%	15%	14%	11%	15%	15%	grade 1 events	706	705	544	258	530	582
								0%	0%	0%	0%	0%	0%
							grade 2 events	26963	121862	34924	86507	36470	32804
								13%	29%	14%	19%	14%	14%
							grade 3 events	11175	22048	12474	39770	13516	12053
								5%	5%	5%	8%	5%	5%
							grade 4 events	11207	21988	12454	39569	13566	12235
								5%	5%	5%	8%	5%	5%
							grade 5 events	2169	10707	2418	9728	2895	2551
								1%	2%	1%	2%	1%	1%
							grade 6 events	21730	96819	31474	128165	31200	28296
								10%	23%	13%	28%	12%	12%
							grade 7 events	31096	50283	31608	40869	35668	31351
								15%	12%	13%	9%	14%	13%

2.2 Compared Parameters

Parameter	Planned	Actual	Parameter	Planned	Actual
Instrument	ACIS	ACIS	Obspar format version number	7	7
Detector	ACIS-456789	ACIS-456789	Obspar file type	PREDICTED	ACTUAL
Grating	NONE	NONE	Obspar update status	NONE	UPDATED
Data mode	FAINT	FAINT	On-chip summing requested	N	N
Observation mode	SECONDARY	SECONDARY	Subarray requested	NONE	NONE
[deg] Pointing RA	0	300.0258387968439	Alternating exposures requested	N	N
[deg] Pointing Dec	0	-32.98131192117341	[s] Primary exposure time	0.000000	3.2
[deg] Pointing Roll	0.0	7.986423494075259			
[mm] SIM focus pos	-0.684267	-0.6828225247311905			
[mm] SIM defocus	0	0.8505141146731063			
[mm] SIM translation stage pos	-190.132523	250.466033080201			
[mm] SIM translation stage offset	0	-0.01005468664627074			
[s] Observation start time (MET)	174988397.568999	174988396.5443			
Observation start date	2003-07-19T07:53:18	2003-07-19T07:53:16			
[s] Observation end time (MET)	174999978.019492	174999976.9948			
Observation end date	2003-07-19T11:06:18	2003-07-19T11:06:16			
Read mode	TIMED	TIMED			

2.3 Star Slots

2.4 FID Slots

A Summary

A.1 Status

V&V Scientist	Jen Lauer
V&V Date (YYYY-MM-DD)	2012.12.06
V&V Edition	1
V&V Disposition and Status	OK
V&V Charge Time	9.7308210776448

A.2 Comments