

V&V Reference Report

L2 ASCDS Version : 7.6.8

Observation 60542 - L2 Version 001
Chandra X-Ray Center

L2 Processing Date : Jul 3 2006

Contents

1	Front	2
2	OBI	3
2.1	OBI	3
2.1.1	Images	3
2.1.2	Bias	3
2.1.3	Parameters	4
2.1.4	Events	4
2.2	Compared Parameters	5
2.3	Aspect	6
2.4	Star Slots	8
2.5	FID Slots	8
A	Summary	9
A.1	Status	9
A.2	Comments	9

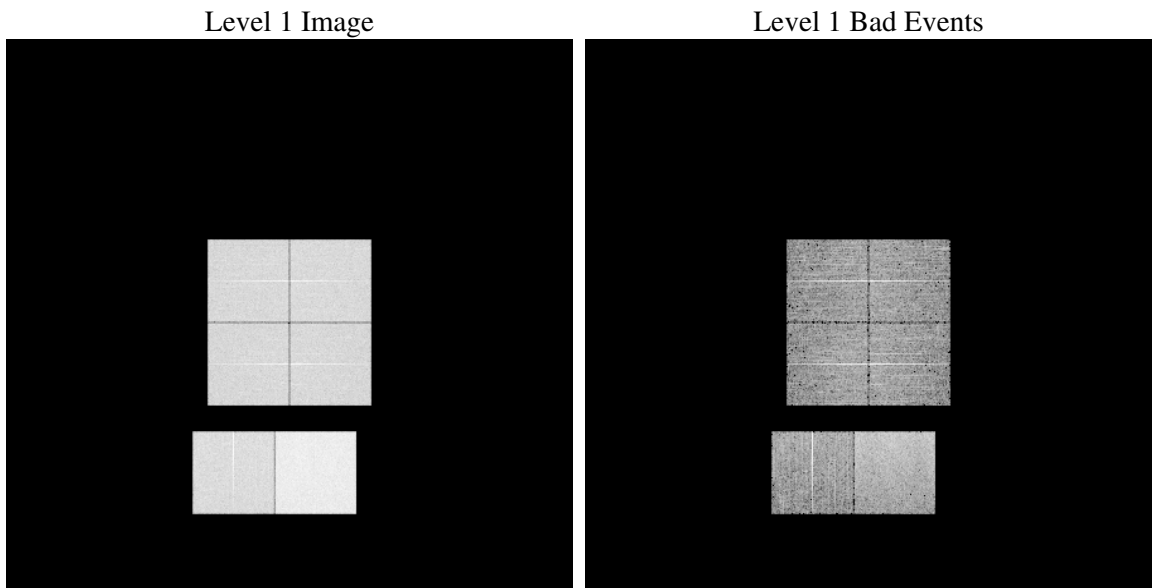
1 Front

seq_num	
obs_id	60542
title	ACIS-012367 diagnostics
observer	CHANDRA engineering request/realtime commanding
object	
dtcycle	0
cycle	P
ra_targ	0.0
dec_targ	0.0
ra_nom	130.3982132875
dec_nom	48.128575185127
roll_nom	59.478240123035
revision	2
ontime	8459.3768698275
livetime	8352.2591462765
ontime0	5254.1038402617
ontime1	5338.4104247391
ontime2	5082.4148656428
ontime3	5049.8408933878
ontime6	5494.0597741604
ontime7	8459.3768698275
l2events	1239464

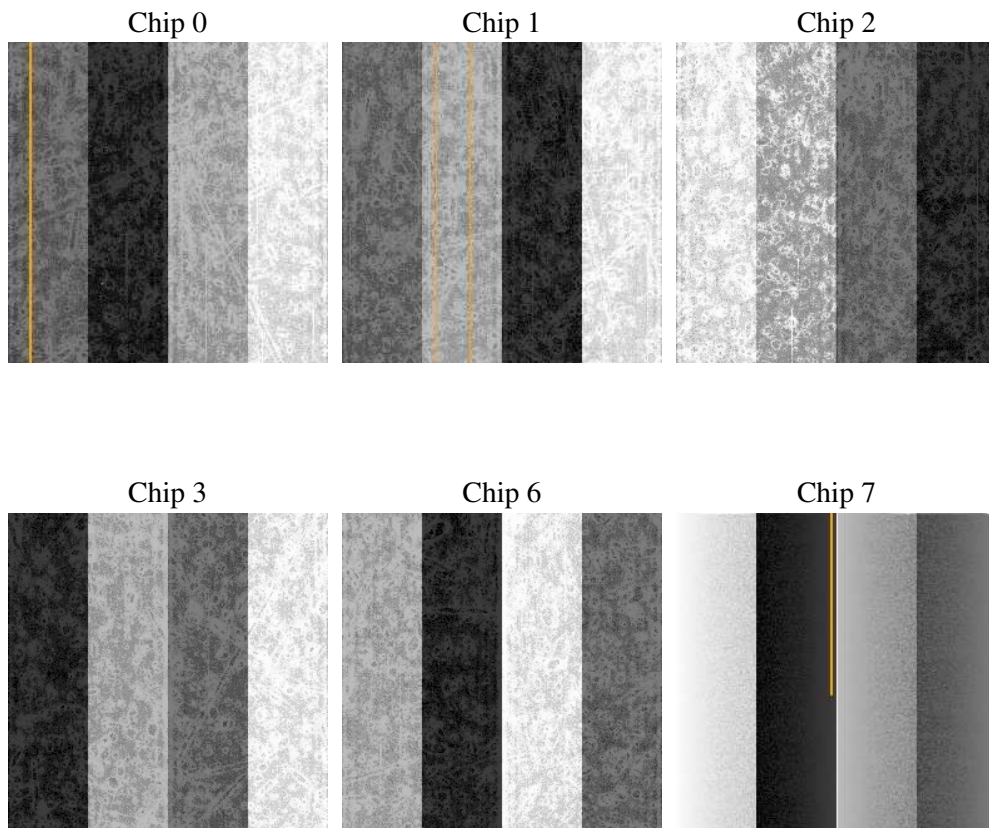
2 OBI

2.1 OBI

2.1.1 Images



2.1.2 Bias



2.1.3 Parameters

obi_num	0
ascdsver	7.6.8
caldbver	3.2.2
date	2006-07-03T04:24:01
revision	2

sched_exp_time	0.0
ontime	8462.2483429909
ontime0	5256.9342734218
ontime1	5341.1998178959
ontime2	5085.1632187963
ontime3	5052.7534065545
ontime6	5496.7670873404
ontime7	8462.2483429909
l1events	1538495

2.1.4 Events

	ccd 0	ccd 1	ccd 2	ccd 3	ccd 6	ccd 7
level 1 events	227882	232513	224143	224187	250755	379015
rejected events	34282	35491	35661	36373	38650	59857
rejected %	15%	15%	15%	16%	15%	15%

	ccd 0	ccd 1	ccd 2	ccd 3	ccd 6	ccd 7
grade 0 events	106308	107929	105391	105088	115025	56145
	46%	46%	47%	46%	45%	14%
grade 1 events	589	521	633	645	530	128
	0%	0%	0%	0%	0%	0%
grade 2 events	33905	34693	31783	32072	36557	96908
	14%	14%	14%	14%	14%	25%
grade 3 events	12545	12510	12539	12347	13283	22751
	5%	5%	5%	5%	5%	6%
grade 4 events	12539	12535	12314	12119	13076	22570
	5%	5%	5%	5%	5%	5%
grade 5 events	2370	2421	2169	2349	2750	7380
	1%	1%	0%	1%	1%	1%
grade 6 events	28430	29461	26572	26313	34296	120905
	12%	12%	11%	11%	13%	31%
grade 7 events	31196	32443	32742	33254	35238	52228
	13%	13%	14%	14%	14%	13%

2.2 Compared Parameters

Parameter	Planned	Actual	Parameter	Planned	Actual
Instrument	ACIS	ACIS	Obspar format version number	6	6
Detector	ACIS-012367	ACIS-012367	Obspar file type	PREDICTED	ACTUAL
Grating	NONE	NONE	Obspar update status	NONE	UPDATED
Data mode	FAINT	FAINT	On-chip summing requested	N	N
Observation mode	SECONDARY	SECONDARY	Subarray requested	NONE	NONE
Pointing RA	0	130.3982132874982	Alternating exposures requested	N	N
Pointing Dec	0	48.12857518512671	Primary exposure time	0.000000	3.2
Pointing Roll	0.0	59.47824012303491			
SIM focus pos (mm)	-0.782348	-1.428180813131781			
SIM defocus (mm)	0	0.1051558262725154			
SIM translation stage pos (mm)	-233.592463	250.4635187648994			
SIM translation stage offset (mm)	0	-0.007540371344731511			
Observation start time	180967807.074785	180967806.05007			
Observation start date	2003-09-26T12:50:07	2003-09-26T12:50:06			
Observation end time	180992216.425832	180992215.40112			
Observation end date	2003-09-26T19:36:56	2003-09-26T19:36:55			
Read mode	TIMED	TIMED			

2.3 Aspect

2.4 Star Slots

2.5 FID Slots

A Summary

A.1 Status

V&V Scientist	Beth Sundheim
V&V Date (YYYY-MM-DD)	2006.07.03
V&V Edition	1
V&V Disposition and Status	OK
V&V Charge Time	8.45937686

A.2 Comments