

V&V Reference Report

L2 ASCDS Version : 7.6.8

Observation 60502 - L2 Version 001
Chandra X-Ray Center

L2 Processing Date : Jun 29 2006

Contents

1	Front	2
2	OBI	3
2.1	OBI	3
2.1.1	Images	3
2.1.2	Bias	3
2.1.3	Parameters	4
2.1.4	Events	4
2.2	Compared Parameters	5
2.3	Aspect	6
2.4	Star Slots	8
2.5	FID Slots	8
A	Summary	9
A.1	Status	9
A.2	Comments	9

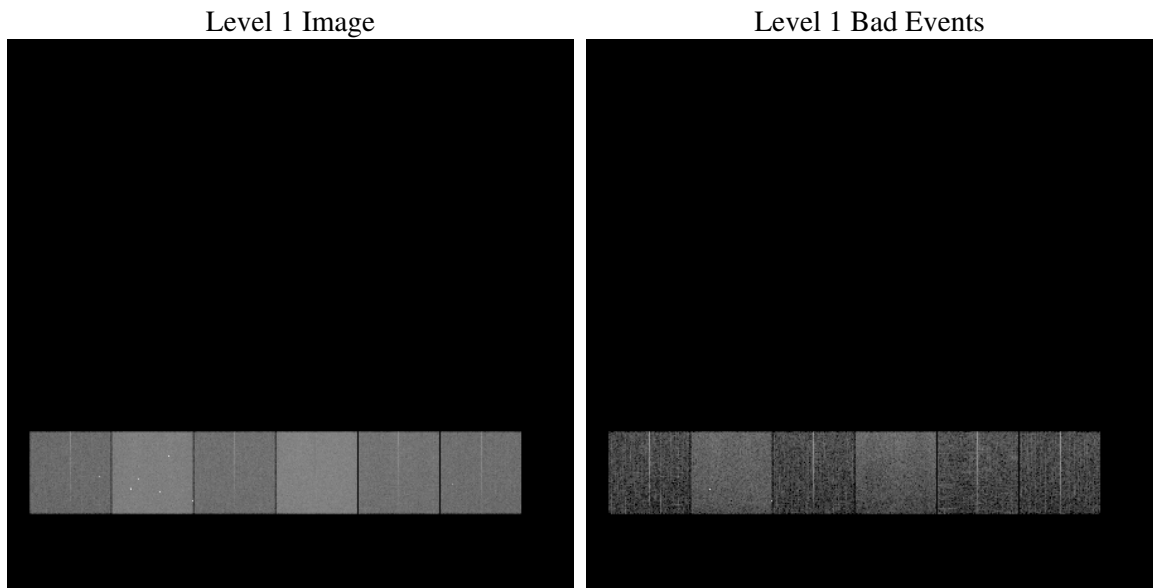
1 Front

seq_num	
obs_id	60502
title	ACIS-456789 diagnostics
observer	CHANDRA engineering request/realtime commanding
object	
dtcycle	0
cycle	P
ra_targ	0.0
dec_targ	0.0
ra_nom	345.02360633149
dec_nom	-6.0163164290308
roll_nom	292.30157447558
revision	2
ontime	7803.2919587791
livetime	7704.4819774187
ontime4	4257.7799745798
ontime5	7803.3329987824
ontime6	4646.6584778428
ontime7	7803.2919587791
ontime8	4808.7896401584
ontime9	4503.9310815334
l2events	1126246

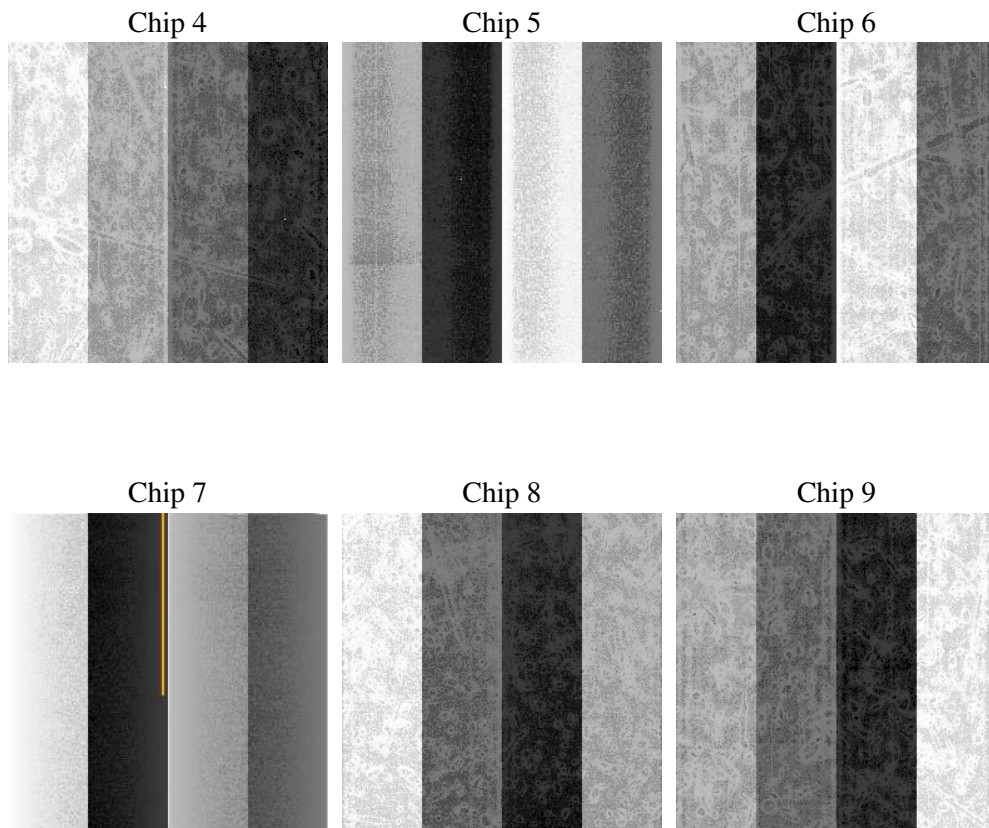
2 OBI

2.1 OBI

2.1.1 Images



2.1.2 Bias



2.1.3 Parameters

obi_num	0
ascdsver	7.6.8
caldsver	3.2.2
date	2006-06-29T17:57:37
revision	2

sched_exp_time	0.0
ontime	7804.3455055058
ontime4	4258.7104012966
ontime5	7804.3455055058
ontime6	4647.6299445629
ontime7	7804.3455055058
ontime8	4809.6790269017
ontime9	4505.0256682634
l1events	1417705

2.1.4 Events

	ccd 4	ccd 5	ccd 6	ccd 7	ccd 8	ccd 9
level 1 events	174491	309223	200685	330618	212951	189737
rejected events	28937	56902	29426	48763	33465	29789
rejected %	16%	18%	14%	14%	15%	15%

	ccd 4	ccd 5	ccd 6	ccd 7	ccd 8	ccd 9
grade 0 events	85182	31871	93913	50930	98551	88618
	48%	10%	46%	15%	46%	46%
grade 1 events	615	341	407	107	497	489
	0%	0%	0%	0%	0%	0%
grade 2 events	22937	119451	29582	84979	31321	27084
	13%	38%	14%	25%	14%	14%
grade 3 events	9677	7792	10772	21066	11658	10264
	5%	2%	5%	6%	5%	5%
grade 4 events	9415	7684	10469	20624	11635	9973
	5%	2%	5%	6%	5%	5%
grade 5 events	1813	5958	2158	6377	2443	2090
	1%	1%	1%	1%	1%	1%
grade 6 events	18343	85523	26523	104256	26321	24009
	10%	27%	13%	31%	12%	12%
grade 7 events	26509	50603	26861	42279	30525	27210
	15%	16%	13%	12%	14%	14%

2.2 Compared Parameters

Parameter	Planned	Actual	Parameter	Planned	Actual
Instrument	ACIS	ACIS	Obspar format version number	6	6
Detector	ACIS-456789	ACIS-456789	Obspar file type	PREDICTED	ACTUAL
Grating	NONE	NONE	Obspar update status	NONE	UPDATED
Data mode	FAINT	FAINT	On-chip summing requested	N	N
Observation mode	SECONDARY	SECONDARY	Subarray requested	NONE	NONE
Pointing RA	0	345.0236063314856	Alternating exposures requested	N	N
Pointing Dec	0	-6.016316429030846	Primary exposure time	0.000000	3.2
Pointing Roll	0.0	292.3015744755842			
SIM focus pos (mm)	-0.684267	-0.6828225247311905			
SIM defocus (mm)	0	0.8505141146731063			
SIM translation stage pos (mm)	-190.132523	250.4635187648994			
SIM translation stage offset (mm)	0	-0.007540371344731511			
Observation start time	183220707.971614	183220706.94689			
Observation start date	2003-10-22T14:38:28	2003-10-22T14:38:26			
Observation end time	183236915.272311	183236914.24759			
Observation end date	2003-10-22T19:08:35	2003-10-22T19:08:34			
Read mode	TIMED	TIMED			

2.3 Aspect

2.4 Star Slots

2.5 FID Slots

A Summary

A.1 Status

V&V Scientist	Beth Sundheim
V&V Date (YYYY-MM-DD)	2006.06.29
V&V Edition	1
V&V Disposition and Status	OK
V&V Charge Time	7.80329195

A.2 Comments