

V&V Reference Report

L2 ASCDS Version : 7.6.7.2

Observation 60372 - L2 Version 001
Chandra X-Ray Center

L2 Processing Date : Jun 2 2006

Contents

1	Front	2
2	OBI	3
2.1	OBI	3
2.1.1	Images	3
2.1.2	Bias	3
2.1.3	Parameters	4
2.1.4	Events	4
2.2	Compared Parameters	5
2.3	Aspect	6
2.4	Star Slots	8
2.5	FID Slots	8
A	Summary	9
A.1	Status	9
A.2	Comments	9

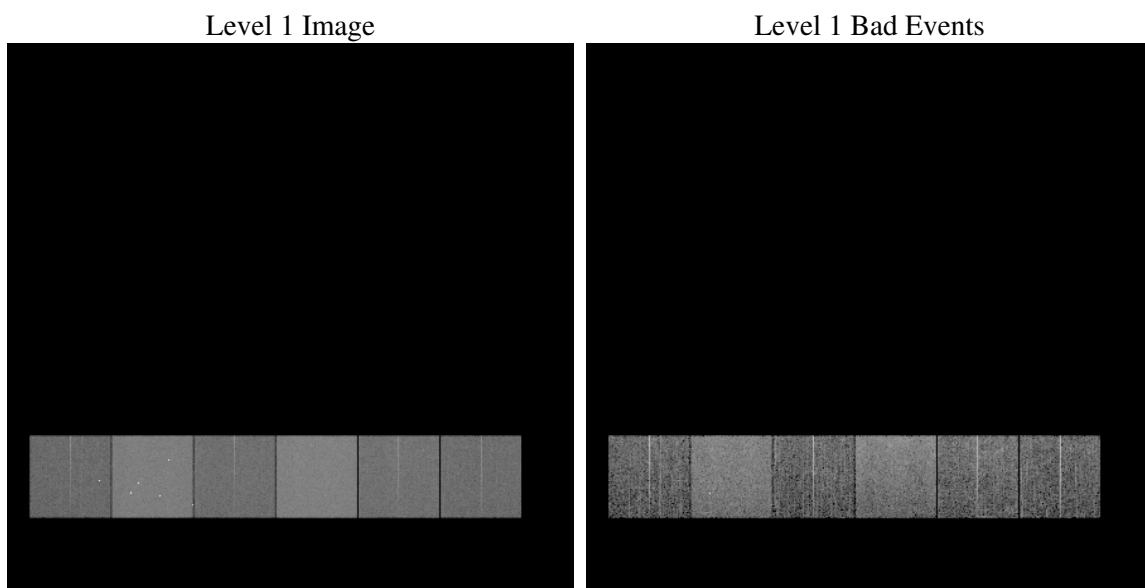
1 Front

seq_num	
obs_id	60372
title	ACIS-456789 diagnostics
observer	CHANDRA engineering request/realtime commanding
object	
dtcycle	0
cycle	P
ra_targ	0.0
dec_targ	0.0
ra_nom	171.95973438861
dec_nom	45.002849870478
roll_nom	141.34926740248
revision	2
ontime	7795.1999709606
livetime	7696.4924552224
ontime4	4370.5769281387
ontime5	7795.1999709606
ontime6	4768.1188054979
ontime7	7795.1999709606
ontime8	4917.204764545
ontime9	4613.4870354235
l2events	1094966

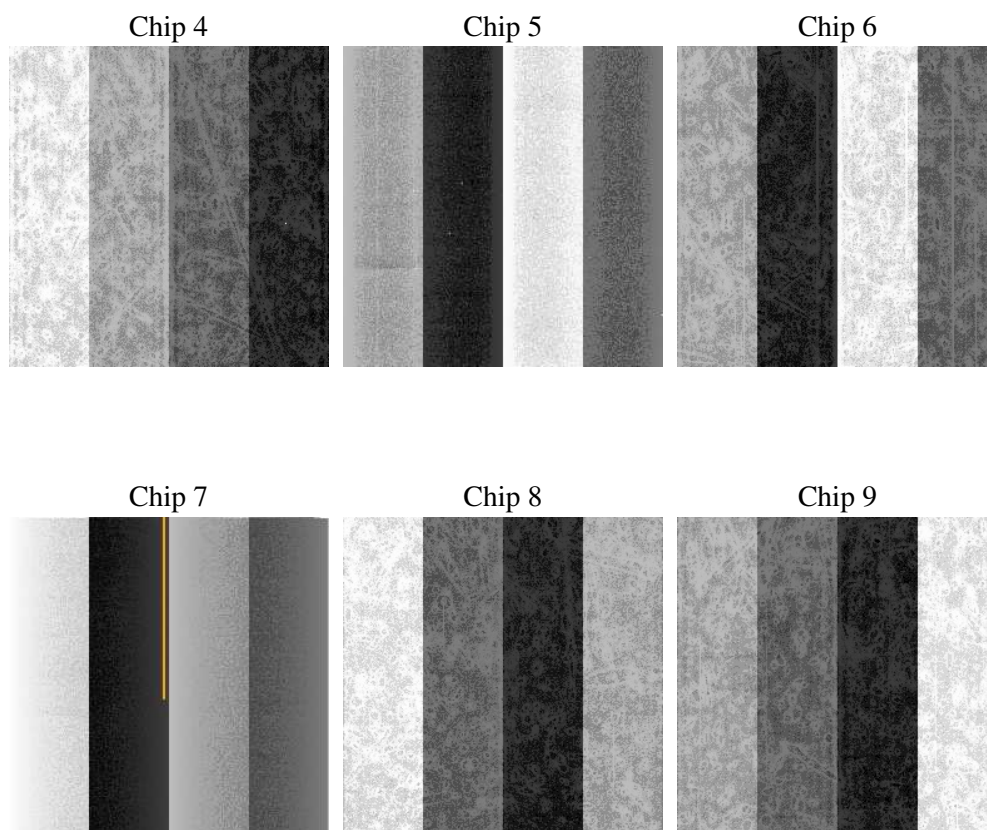
2 OBI

2.1 OBI

2.1.1 Images



2.1.2 Bias



2.1.3 Parameters

obi_num	0
ascdsver	7.6.7.2
caldbver	3.2.2
date	2006-06-02T21:46:11
revision	2

sched_exp_time	0.0
ontime	7797.8707509637
ontime4	4372.147378087
ontime5	7797.8707509637
ontime6	4770.789585501
ontime7	7797.8707509637
ontime8	4919.875544548
ontime9	4615.221645385
l1events	1416010

2.1.4 Events

	ccd 4	ccd 5	ccd 6	ccd 7	ccd 8	ccd 9
level 1 events	176348	308969	201249	324106	215968	189370
rejected events	33358	58578	33929	54931	39049	33405
rejected %	18%	18%	16%	16%	18%	17%

	ccd 4	ccd 5	ccd 6	ccd 7	ccd 8	ccd 9
grade 0 events	84262	34471	90736	46707	96448	86033
	47%	11%	45%	14%	44%	45%
grade 1 events	591	632	388	114	441	461
	0%	0%	0%	0%	0%	0%
grade 2 events	21631	115615	29168	82743	30838	26332
	12%	37%	14%	25%	14%	13%
grade 3 events	9395	8033	10193	19053	11356	9903
	5%	2%	5%	5%	5%	5%
grade 4 events	9230	7628	10235	18537	11441	9865
	5%	2%	5%	5%	5%	5%
grade 5 events	2017	5774	2227	6555	2772	2277
	1%	1%	1%	2%	1%	1%
grade 6 events	18472	84741	26988	102248	26836	23937
	10%	27%	13%	31%	12%	12%
grade 7 events	30750	52075	31314	48149	35836	30562
	17%	16%	15%	14%	16%	16%

2.2 Compared Parameters

Parameter	Planned	Actual	Parameter	Planned	Actual
Instrument	ACIS	ACIS	Obspar format version number	6	6
Detector	ACIS-456789	ACIS-456789	Obspar file type	PREDICTED	ACTUAL
Grating	NONE	NONE	Obspar update status	NONE	UPDATED
Data mode	FAINT	FAINT	On-chip summing requested	N	N
Observation mode	SECONDARY	SECONDARY	Subarray requested	NONE	NONE
Pointing RA	0	171.9597343886119	Alternating exposures requested	N	N
Pointing Dec	0	45.00284987047822	Primary exposure time	0.000000	3.2
Pointing Roll	0.0	141.3492674024818			
SIM focus pos (mm)	-0.684267	-0.6828225247311905			
SIM defocus (mm)	0	0.8505141146731063			
SIM translation stage pos (mm)	-190.132523	250.466033080201			
SIM translation stage offset (mm)	0	-0.01005468664627074			
Observation start time	193273590.658456	193273589.63374			
Observation start date	2004-02-15T23:06:31	2004-02-15T23:06:29			
Observation end time	193288748.359119	193288747.3344			
Observation end date	2004-02-16T03:19:08	2004-02-16T03:19:07			
Read mode	TIMED	TIMED			

2.3 Aspect

2.4 Star Slots

2.5 FID Slots

A Summary

A.1 Status

V&V Scientist	Jen Lauer
V&V Date (YYYY-MM-DD)	2006.06.04
V&V Edition	1
V&V Disposition and Status	OK
V&V Charge Time	7.79519997

A.2 Comments

The ACIS focal plane temperature was above calibration limits for the entire observation.