

V&V Reference Report

L2 ASCDS Version : 7.6.7.2

Observation 60082 - L2 Version 001
Chandra X-Ray Center

L2 Processing Date : Apr 25 2006

Contents

1	Front	2
2	OBI	3
2.1	OBI	3
2.1.1	Images	3
2.1.2	Bias	3
2.1.3	Parameters	4
2.1.4	Events	4
2.2	Compared Parameters	5
2.3	Aspect	6
2.4	Star Slots	8
2.5	FID Slots	8
A	Summary	9
A.1	Status	9
A.2	Comments	9

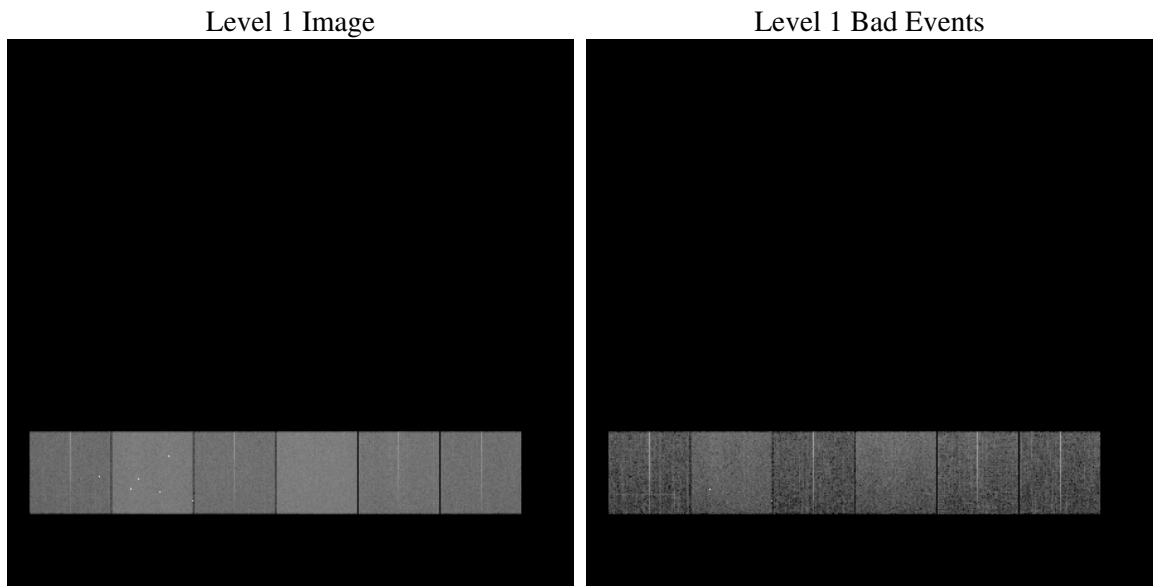
1 Front

seq_num	
obs_id	60082
title	ACIS-456789 diagnostics
observer	CHANDRA engineering request/realtime commanding
object	
dtcycle	0
cycle	P
ra_targ	0.0
dec_targ	0.0
ra_nom	129.96593024304
dec_nom	-33.000660046293
roll_nom	148.4465740232
revision	2
ontime	8179.1999695301
livetime	8075.630014593
ontime4	5233.1640045345
ontime5	8179.1999695301
ontime6	5813.2983363867
ontime7	8179.1999695301
ontime8	6033.6847116947
ontime9	5633.8906959891
l2events	1092681

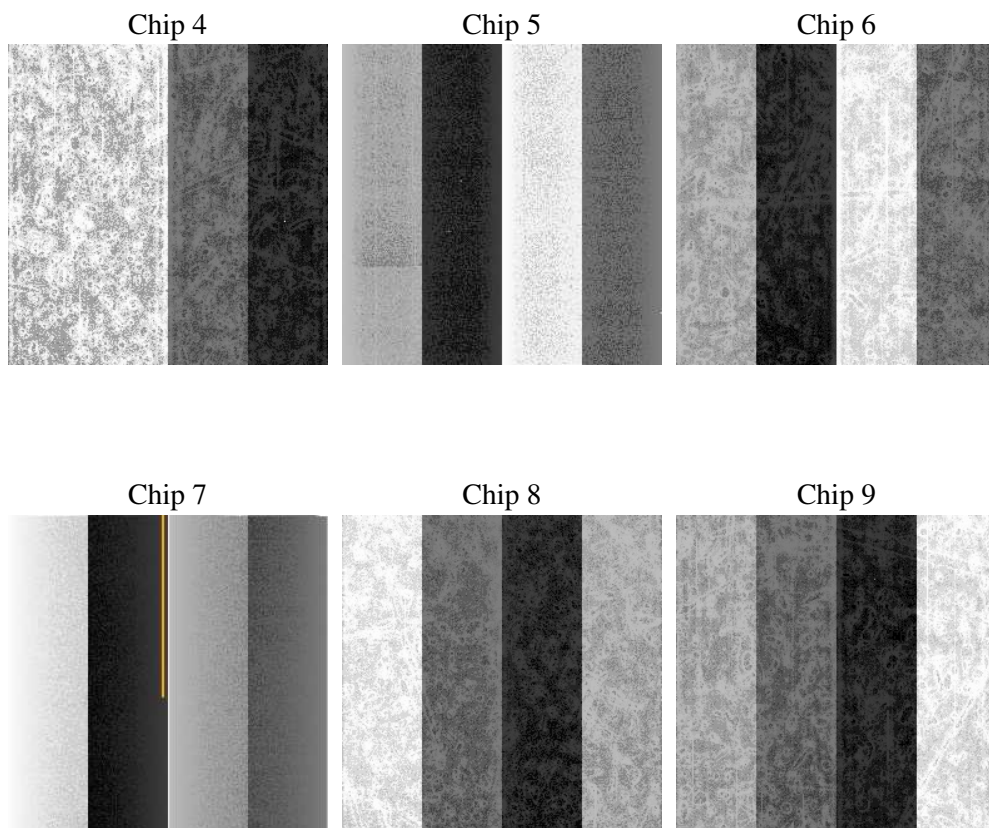
2 OBI

2.1 OBI

2.1.1 Images



2.1.2 Bias



2.1.3 Parameters

obi_num	0
ascdsver	7.6.7.2
caldsver	3.2.1
date	2006-04-25T09:11:13
revision	2

sched_exp_time	0.0
ontime	8277.5088486075
ontime4	5295.8223105967
ontime5	8277.5088486075
ontime6	5882.4386725128
ontime7	8277.5088486075
ontime8	6099.5839779079
ontime9	5700.9442193806
l1events	1498030

2.1.4 Events

	ccd 4	ccd 5	ccd 6	ccd 7	ccd 8	ccd 9
level 1 events	196130	305760	224220	316195	243314	212411
rejected events	47110	70612	47196	66515	54773	47053
rejected %	24%	23%	21%	21%	22%	22%

	ccd 4	ccd 5	ccd 6	ccd 7	ccd 8	ccd 9
grade 0 events	88187	30424	96767	41483	103466	91693
	44%	9%	43%	13%	42%	43%
grade 1 events	682	265	499	111	555	569
	0%	0%	0%	0%	0%	0%
grade 2 events	23335	109782	31217	77761	33493	28658
	11%	35%	13%	24%	13%	13%
grade 3 events	9903	6969	11175	17575	12609	10815
	5%	2%	4%	5%	5%	5%
grade 4 events	9948	6729	10950	17239	12329	10698
	5%	2%	4%	5%	5%	5%
grade 5 events	2570	6688	2933	7392	3543	3102
	1%	2%	1%	2%	1%	1%
grade 6 events	19428	84010	28917	98751	28691	25460
	9%	27%	12%	31%	11%	11%
grade 7 events	42077	60893	41762	55883	48628	41416
	21%	19%	18%	17%	19%	19%

2.2 Compared Parameters

Parameter	Planned	Actual	Parameter	Planned	Actual
Instrument	ACIS	ACIS	Obspar format version number	6	6
Detector	ACIS-456789	ACIS-456789	Obspar file type	PREDICTED	ACTUAL
Grating	NONE	NONE	Obspar update status	NONE	UPDATED
Data mode	FAINT	FAINT	On-chip summing requested	N	N
Observation mode	SECONDARY	SECONDARY	Subarray requested	NONE	NONE
Pointing RA	0	129.9659302430368	Alternating exposures requested	N	N
Pointing Dec	0	-33.00066004629334	Primary exposure time	3.2	3.2
Pointing Roll	0.0	148.4465740232023			
SIM focus pos (mm)	-0.684267	-0.7809083437167272			
SIM defocus (mm)	0	0.7524282956875696			
SIM translation stage pos (mm)	-190.132523	250.466033080201			
SIM translation stage offset (mm)	0	-0.01005468664627074			
Observation start time	209758209.236665	209758208.21167			
Observation start date	2004-08-24T18:10:09	2004-08-24T18:10:08			
Observation end time	209781878.537718	209781877.51273			
Observation end date	2004-08-25T00:44:39	2004-08-25T00:44:37			
Read mode	TIMED	TIMED			

2.3 Aspect

2.4 Star Slots

2.5 FID Slots

A Summary

A.1 Status

V&V Scientist	Jen Lauer
V&V Date (YYYY-MM-DD)	2006.04.25
V&V Edition	1
V&V Disposition and Status	OK
V&V Charge Time	8.17919996

A.2 Comments