

V&V Reference Report

L2 ASCDS Version : 7.6.7.1

Observation 60022 - L2 Version 001
Chandra X-Ray Center

L2 Processing Date : Apr 17 2006

Contents

1	Front	2
2	OBI	3
2.1	OBI	3
2.1.1	Images	3
2.1.2	Bias	3
2.1.3	Parameters	4
2.1.4	Events	4
2.2	Compared Parameters	5
2.3	Aspect	6
2.4	Star Slots	8
2.5	FID Slots	8
A	Summary	9
A.1	Status	9
A.2	Comments	9

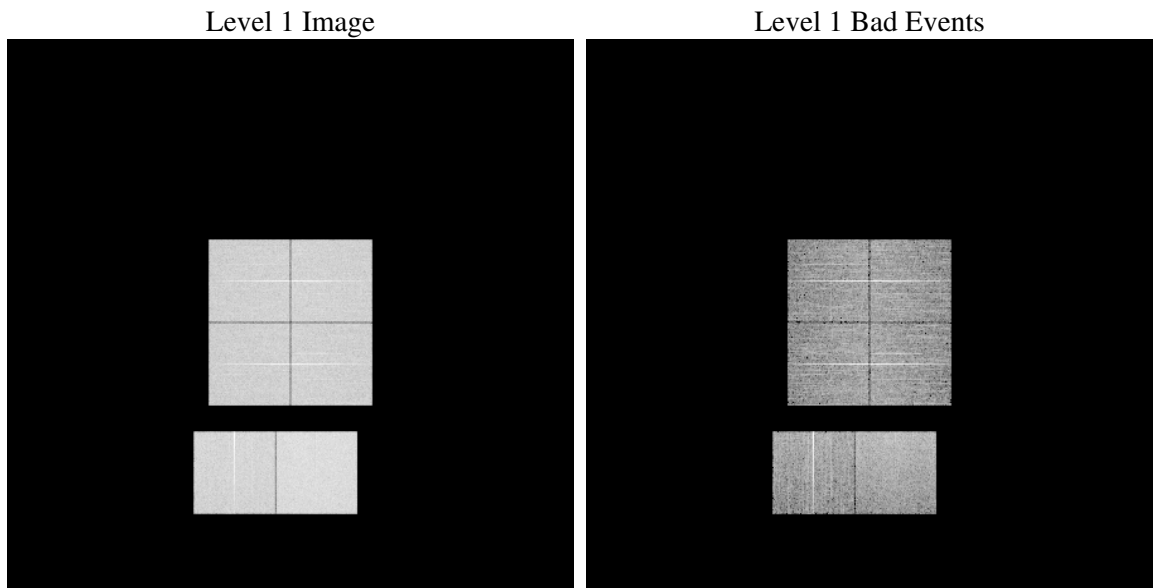
1 Front

seq_num	
obs_id	60022
title	ACIS-012367 diagnostics
observer	CHANDRA engineering request/realtime commanding
object	
dtcycle	0
cycle	P
ra_targ	0.0
dec_targ	0.0
ra_nom	12.015285514607
dec_nom	-6.9757762955504
roll_nom	25.07470639298
revision	2
ontime	8280.0768983066
livetime	8175.2295789565
ontime0	6633.7040504217
ontime1	6802.2754555345
ontime2	6364.7847488225
ontime3	6487.7774797678
ontime6	7100.5272024274
ontime7	8280.0768983066
l2events	1134536

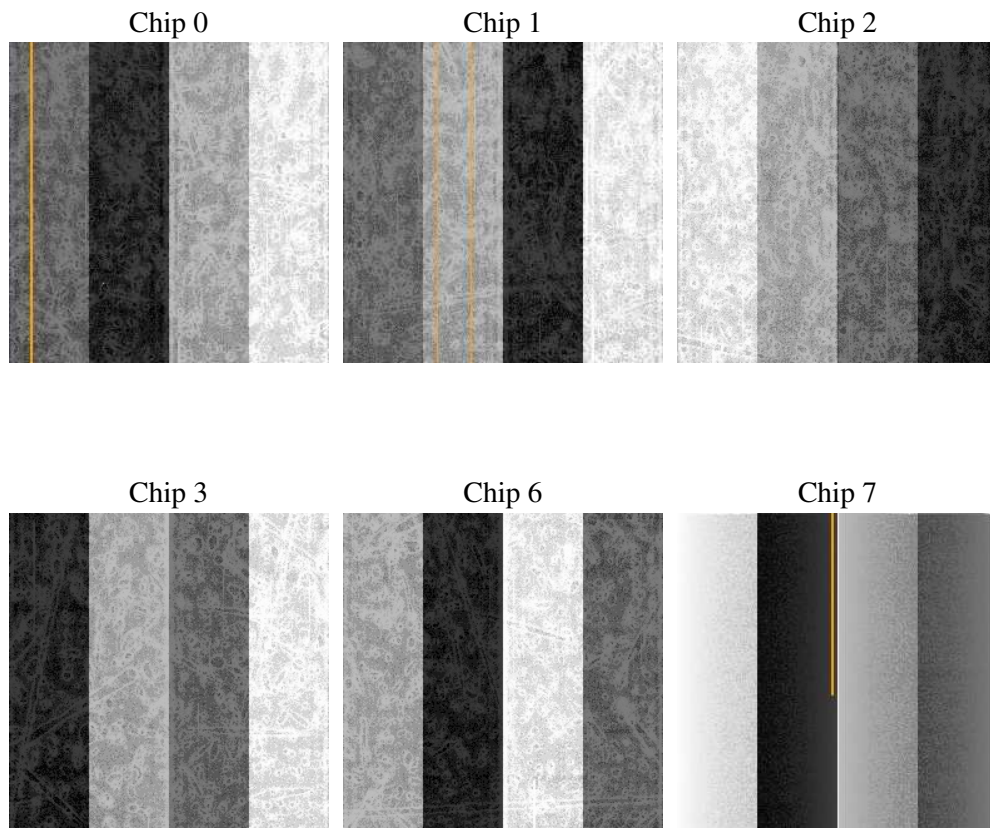
2 OBI

2.1 OBI

2.1.1 Images



2.1.2 Bias



2.1.3 Parameters

obi_num	0
ascdsver	7.6.7.1
caldbver	3.2.1
date	2006-04-17T02:33:51
revision	2

sched_exp_time	0.0
ontime	8280.7685597837
ontime0	6634.3546718955
ontime1	6802.8850370049
ontime2	6365.3532902896
ontime3	6488.5101812482
ontime6	7101.0547039211
ontime7	8280.7685597837
l1events	1498622

2.1.4 Events

	ccd 0	ccd 1	ccd 2	ccd 3	ccd 6	ccd 7
level 1 events	231311	238696	227115	232896	260695	307909
rejected events	46419	48236	47725	49585	52818	62400
rejected %	20%	20%	21%	21%	20%	20%

	ccd 0	ccd 1	ccd 2	ccd 3	ccd 6	ccd 7
grade 0 events	102077	103708	99975	102633	112618	40751
	44%	43%	44%	44%	43%	13%
grade 1 events	634	558	660	708	589	111
	0%	0%	0%	0%	0%	0%
grade 2 events	32091	34097	30425	31217	35833	75063
	13%	14%	13%	13%	13%	24%
grade 3 events	12103	12179	11916	11955	12996	17163
	5%	5%	5%	5%	4%	5%
grade 4 events	11912	12063	11625	12035	12942	16464
	5%	5%	5%	5%	4%	5%
grade 5 events	2956	3205	2745	3121	3475	7395
	1%	1%	1%	1%	1%	2%
grade 6 events	26709	28413	25449	25471	33488	96068
	11%	11%	11%	10%	12%	31%
grade 7 events	42829	44473	44320	45756	48754	54894
	18%	18%	19%	19%	18%	17%

2.2 Compared Parameters

Parameter	Planned	Actual	Parameter	Planned	Actual
Instrument	ACIS	ACIS	Obspar format version number	6	6
Detector	ACIS-012367	ACIS-012367	Obspar file type	PREDICTED	ACTUAL
Grating	NONE	NONE	Obspar update status	NONE	UPDATED
Data mode	FAINT	FAINT	On-chip summing requested	N	N
Observation mode	SECONDARY	SECONDARY	Subarray requested	NONE	NONE
Pointing RA	0	12.01528551460731	Alternating exposures requested	N	N
Pointing Dec	0	-6.975776295550379	Primary exposure time	3.2	3.2
Pointing Roll	0.0	25.07470639298014			
SIM focus pos (mm)	-0.782348	-0.6828225247311905			
SIM defocus (mm)	0	0.8505141146731063			
SIM translation stage pos (mm)	-233.592463	250.466033080201			
SIM translation stage offset (mm)	0	-0.01005468664627074			
Observation start time	212958976.87955	212958975.85452			
Observation start date	2004-09-30T19:16:17	2004-09-30T19:16:15			
Observation end time	212981838.480574	212981837.45554			
Observation end date	2004-10-01T01:37:18	2004-10-01T01:37:17			
Read mode	TIMED	TIMED			

2.3 Aspect

2.4 Star Slots

2.5 FID Slots

A Summary

A.1 Status

V&V Scientist	Jen Lauer
V&V Date (YYYY-MM-DD)	2006.04.17
V&V Edition	1
V&V Disposition and Status	OK
V&V Charge Time	8.28007689

A.2 Comments