

V&V Reference Report

L2 ASCDS Version : 7.6.7

Observation 5922 - L2 Version 002
Chandra X-Ray Center

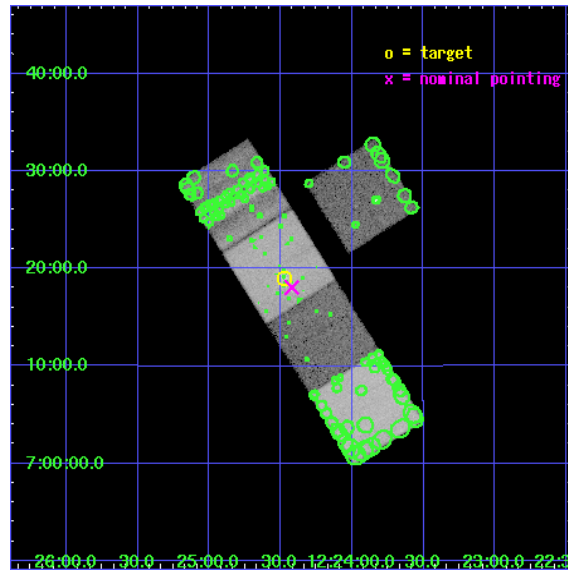
L2 Processing Date: Mar 3 2006

Contents

1	Front	2
2	OBI	3
2.1	OBI	3
2.1.1	Images	3
2.1.2	Bias	3
2.1.3	Parameters	4
2.1.4	Events	4
2.2	Compared Parameters	5
2.3	Aspect	6
2.4	Star Slots	9
2.4.1	Slot 3	9
2.4.2	Slot 4	10
2.4.3	Slot 5	11
2.4.4	Slot 6	12
2.4.5	Slot 7	13
2.5	FID Slots	14
2.5.1	Slot 0	14
2.5.2	Slot 1	15
2.5.3	Slot 2	16
3	Point Sources	17
A	Summary	18
A.1	Status	18
A.2	Comments	18

1 Front

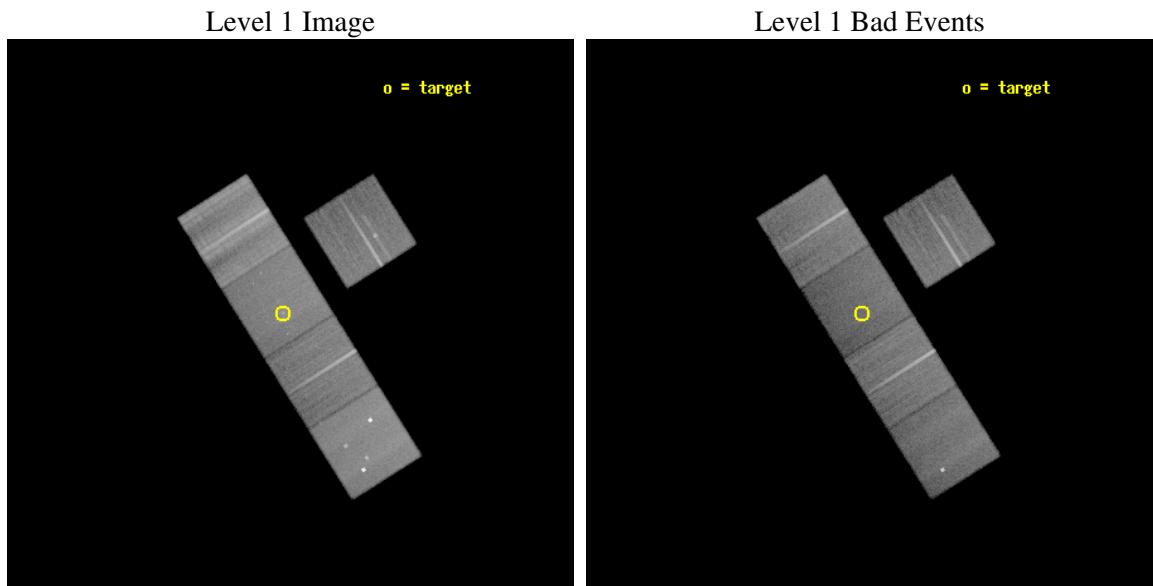
seq_num	600441
obs_id	5922
title	Low Mass X-ray Binaries and Globular Clusters in the Early-Type Galaxy NGC 4365
observer	Mr GREGORY SIVAKOFF
object	NGC4365
dtcycle	0
cycle	P
ra_targ	186.117917
dec_targ	7.317722
ra_nom	186.1053315387
dec_nom	7.3011529817224
roll_nom	237.78564218968
revision	2
ontime	40036.499923021
livetime	39513.393577084
ontime3	40033.358932793
ontime5	40036.499923021
ontime6	40036.499923021
ontime7	40036.499923021
ontime8	40030.217992395
l2events	357755



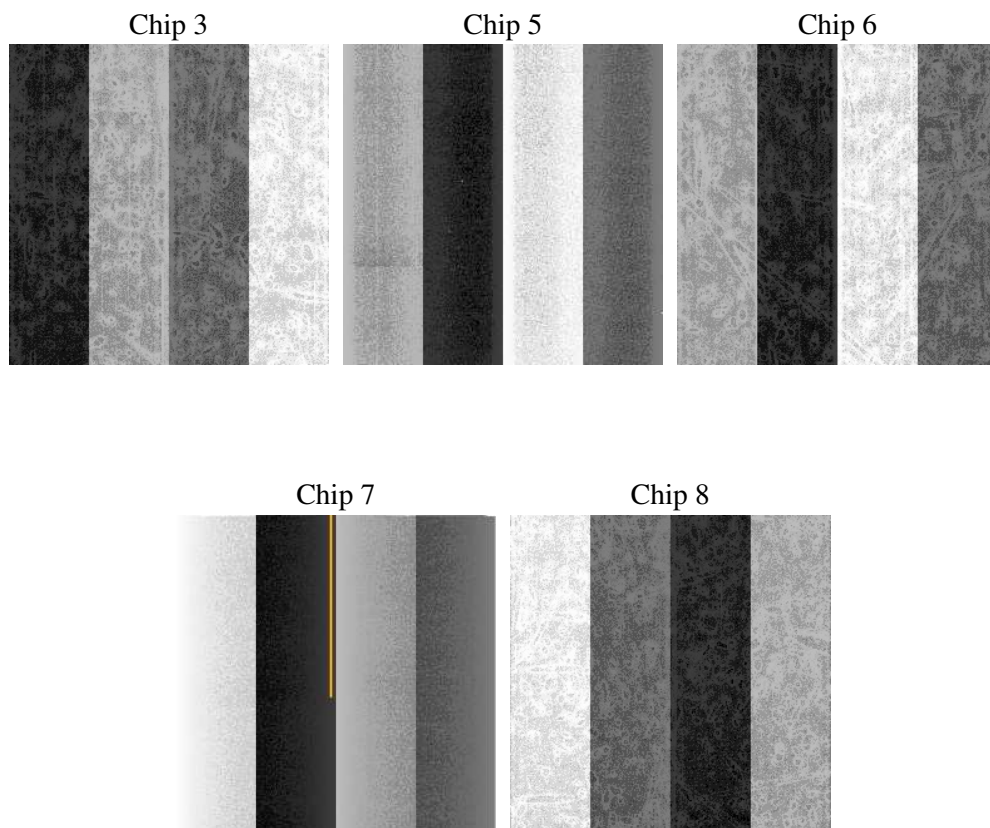
2 OBI

2.1 OBI

2.1.1 Images



2.1.2 Bias



2.1.3 Parameters

obi_num	0
ascdsver	7.6.7
caldbver	3.2.1
date	2006-03-03T09:58:05
revision	2

sched_exp_time	40000.000000
ontime	40041.608243018
ontime3	40038.467232883
ontime5	40041.608243018
ontime6	40041.60822311
ontime7	40041.608243018
ontime8	40035.326292485
l1events	1433018

2.1.4 Events

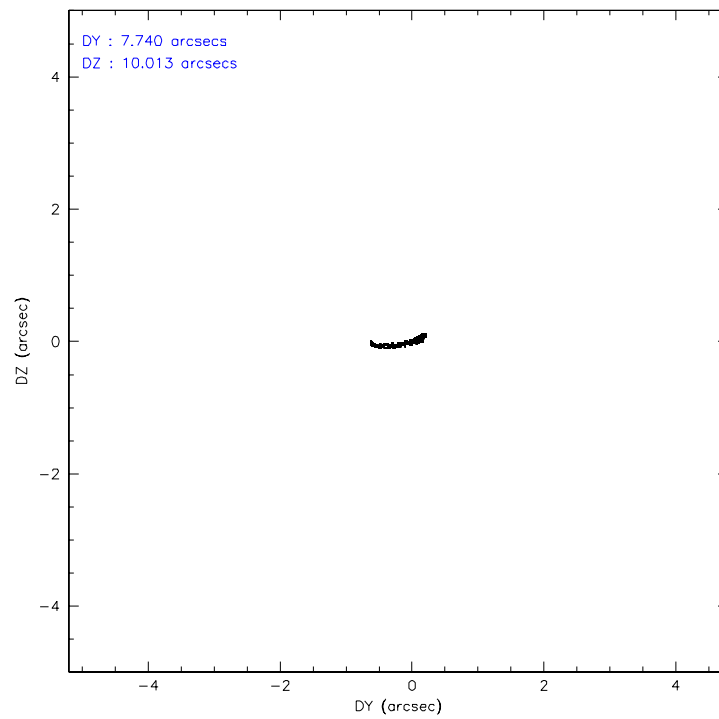
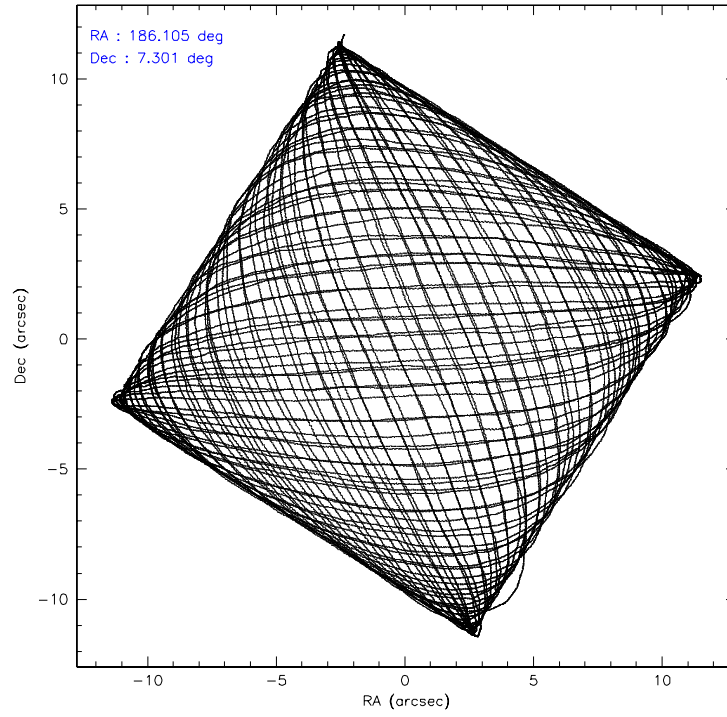
	ccd 3	ccd 5	ccd 6	ccd 7	ccd 8
level 1 events	223776	338430	243757	268267	358788
rejected events	198744	170714	215268	149471	226079
rejected %	88%	50%	88%	55%	63%

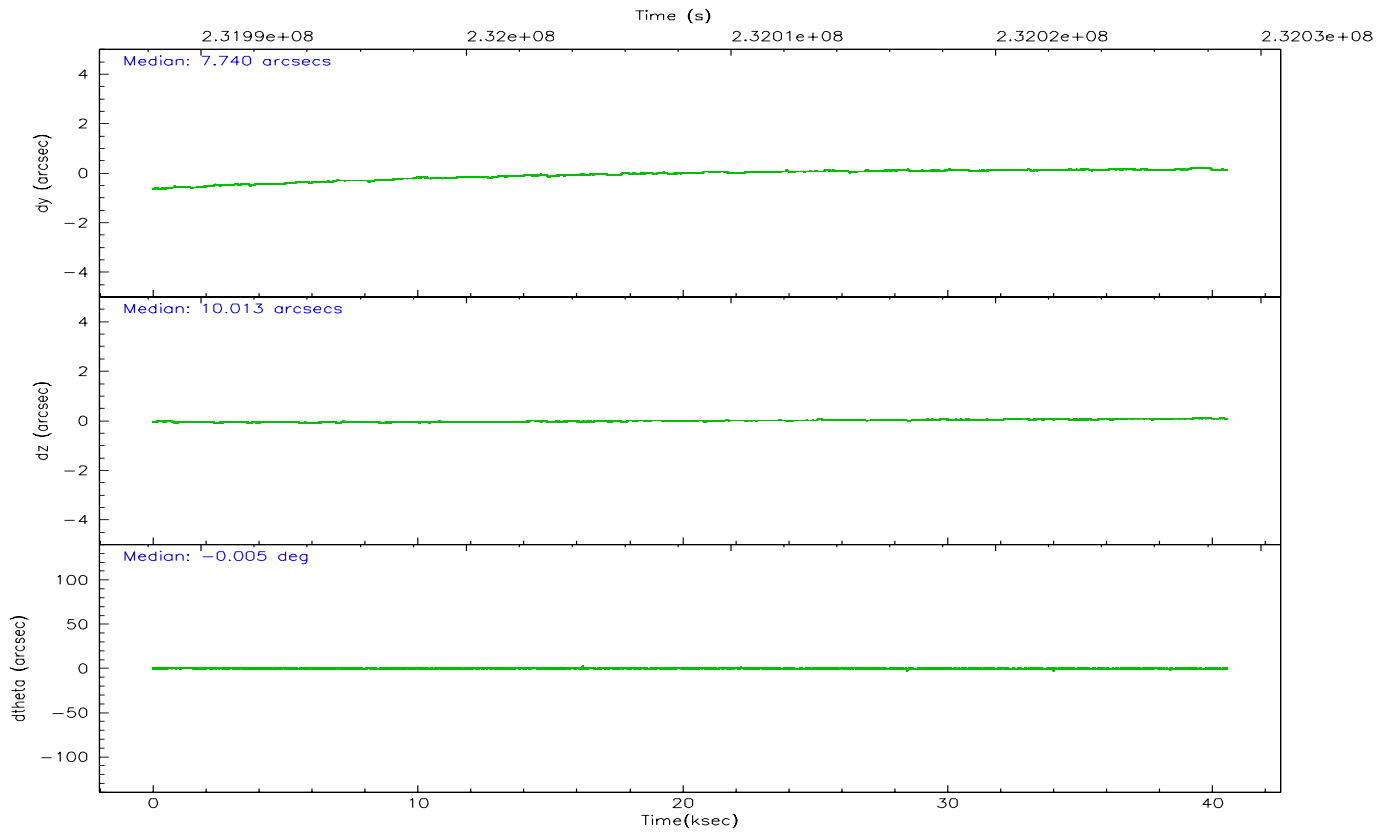
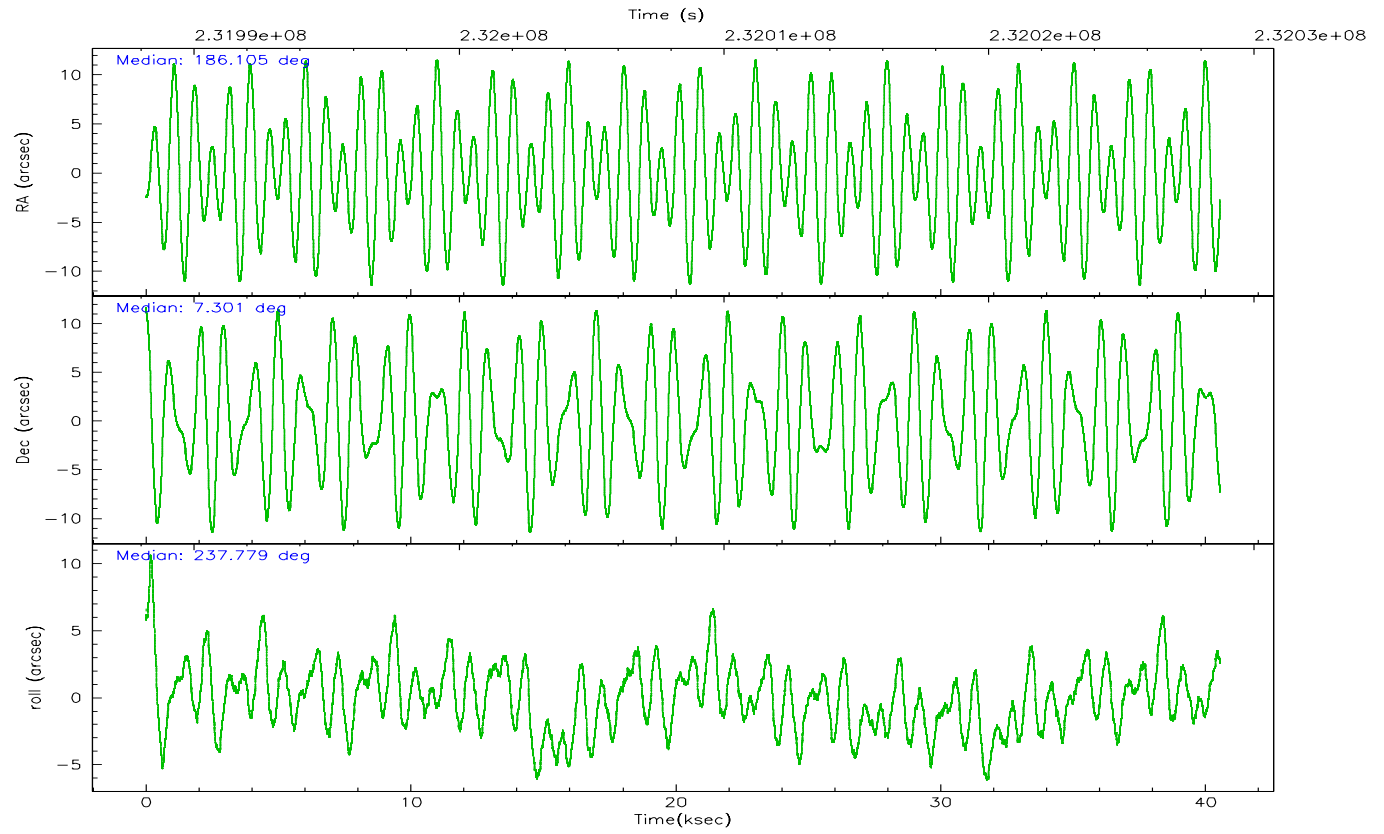
	ccd 3	ccd 5	ccd 6	ccd 7	ccd 8
grade 0 events	10775	21558	12203	9299	52310
	4%	6%	5%	3%	14%
grade 1 events	122	3353	120	148	487
	0%	0%	0%	0%	0%
grade 2 events	4837	50903	5667	29591	18554
	2%	15%	2%	11%	5%
grade 3 events	2631	4991	2719	7359	21176
	1%	1%	1%	2%	5%
grade 4 events	2568	4958	2717	7275	18854
	1%	1%	1%	2%	5%
grade 5 events	9042	17086	9311	19942	13452
	4%	5%	3%	7%	3%
grade 6 events	4225	85327	5188	65296	21834
	1%	25%	2%	24%	6%
grade 7 events	189576	150254	205832	129357	212121
	84%	44%	84%	48%	59%

2.2 Compared Parameters

Parameter	Planned	Actual	Parameter	Planned	Actual
Instrument	ACIS	ACIS	Obspar format version number	6	6
Detector	ACIS-35678	ACIS-35678	Obspar file type	PREDICTED	ACTUAL
Grating	NONE	NONE	Obspar update status	NONE	UPDATED
Data mode	VFAINT	VFAINT	On-chip summing requested	N	N
Observation mode	POINTING	POINTING	Subarray requested	NONE	NONE
Pointing RA	186.106016	186.1053315386997	Alternating exposures requested	N	N
Pointing Dec	7.328359	7.301152981722427	Primary exposure time	0.000000	3.1
Pointing Roll	237.628920	237.7856421896759			
SIM focus pos (mm)	-0.684267	-0.6828225247311905			
SIM defocus (mm)	0	0.001444936568705701			
SIM translation stage pos (mm)	-190.132523	-190.1400660498719			
SIM translation stage offset (mm)	0	0.00754346686406393			
Observation start time	231988729.184000	231987610.73825			
Observation start date	2005-05-09T01:17:45	2005-05-09T01:00:10			
Observation end time	232028729.184000	232029829.97767			
Observation end date	2005-05-09T12:24:25	2005-05-09T12:43:49			
Read mode	TIMED	TIMED			

2.3 Aspect



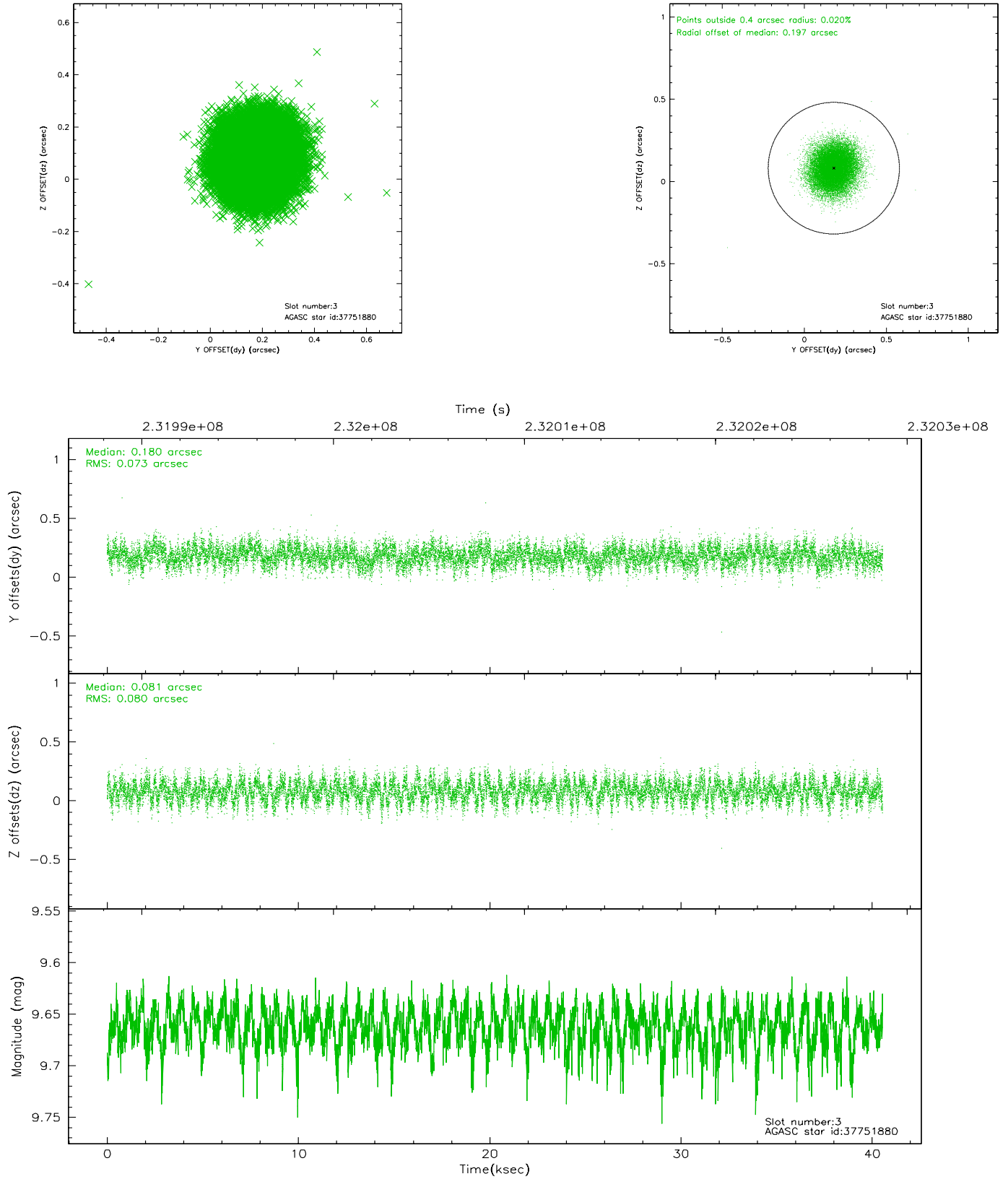


Slot Statistics

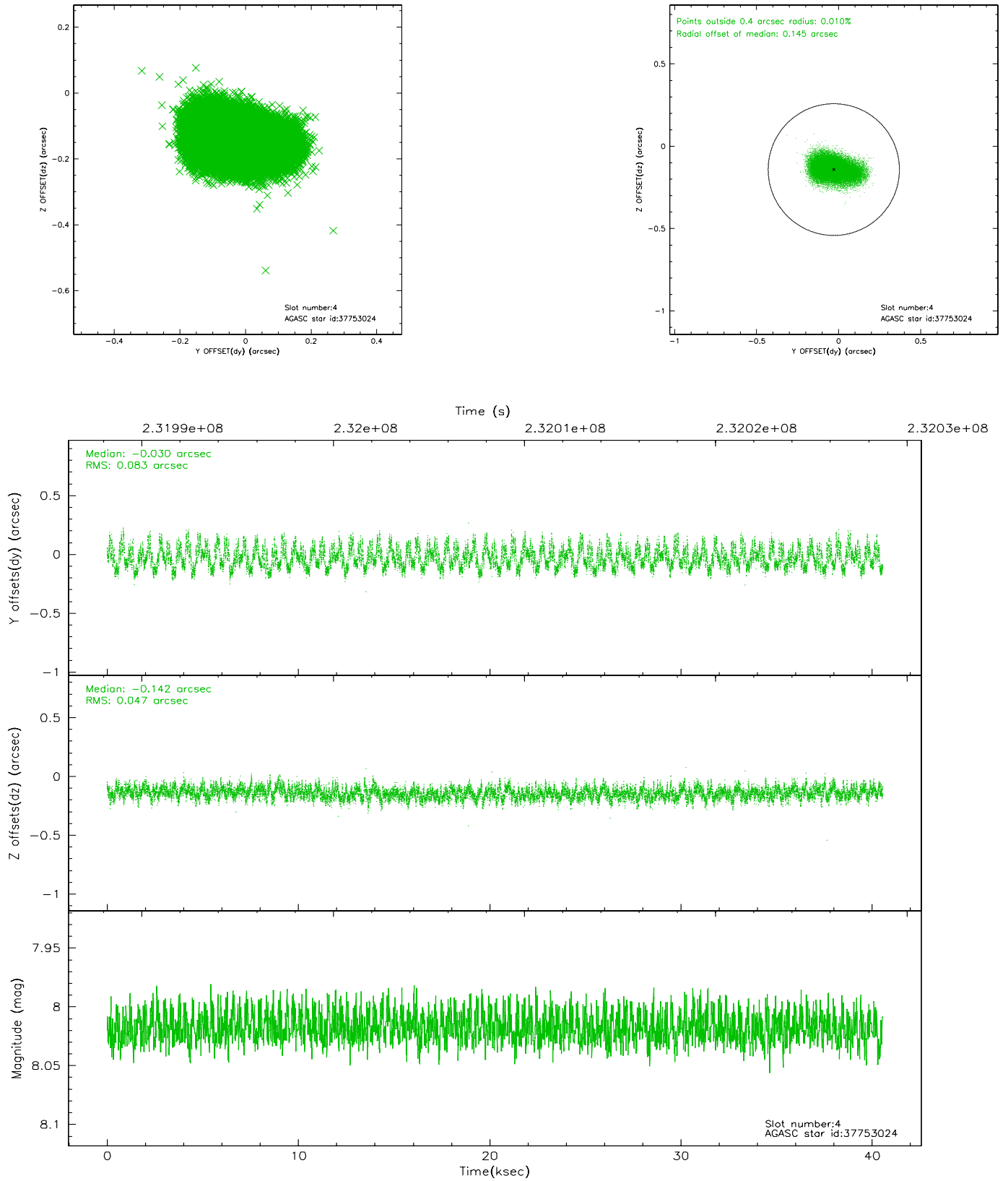
slot	status	id	mag	n_pts	med_dy	med_dz	dr1	dr2	ra	dec	mean_y	mean_z
0	FID	ACIS-S-2	7.10	9893	-0.035	-0.002	0.010	0.017	0.000000	0.000000	-760.43	-1731.28
1	FID	ACIS-S-4	7.21	9891	0.066	0.017	0.009	0.017	0.000000	0.000000	2152.89	177.27
2	FID	ACIS-S-5	7.23	9892	-0.061	-0.007	0.009	0.014	0.000000	0.000000	-1813.33	170.84
3	GUIDE	37751880	9.66	19774	0.180	0.081	0.117	0.184	185.771871	6.844190	2111.87	-75.20
4	GUIDE	37753024	8.02	19780	-0.030	-0.142	0.103	0.162	186.830113	7.241612	-1122.35	2349.92
5	GUIDE	114434008	8.76	19778	-0.073	-0.040	0.105	0.163	185.534773	7.569663	357.27	-2187.29
6	GUIDE	114565080	10.15	19765	-0.074	0.115	0.249	0.405	186.537681	7.759404	-2135.42	469.32
7	GUIDE	37753088	10.07	19768	0.015	-0.023	0.174	0.275	186.819295	7.254633	-1141.36	2291.75

2.4 Star Slots

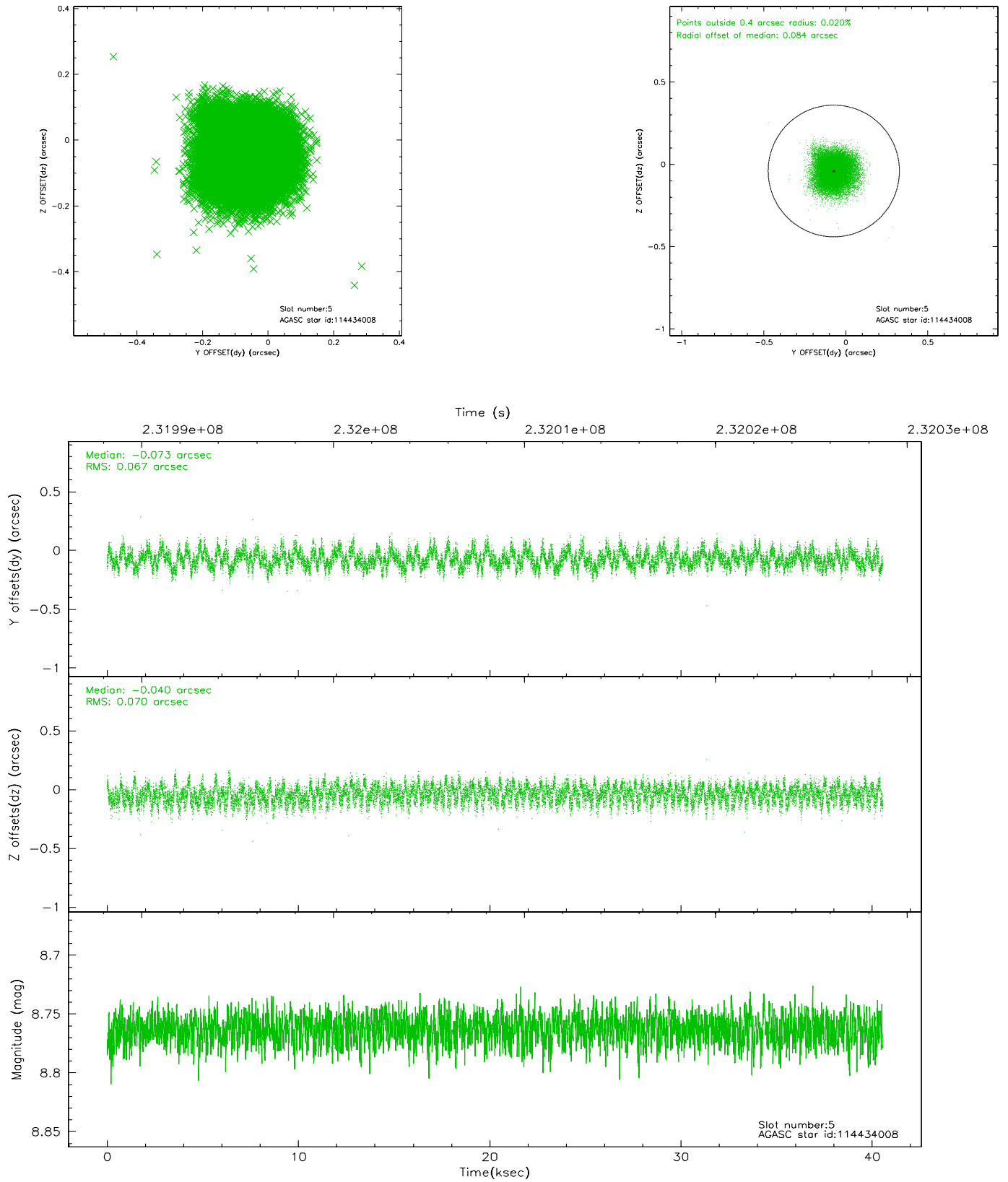
2.4.1 Slot 3



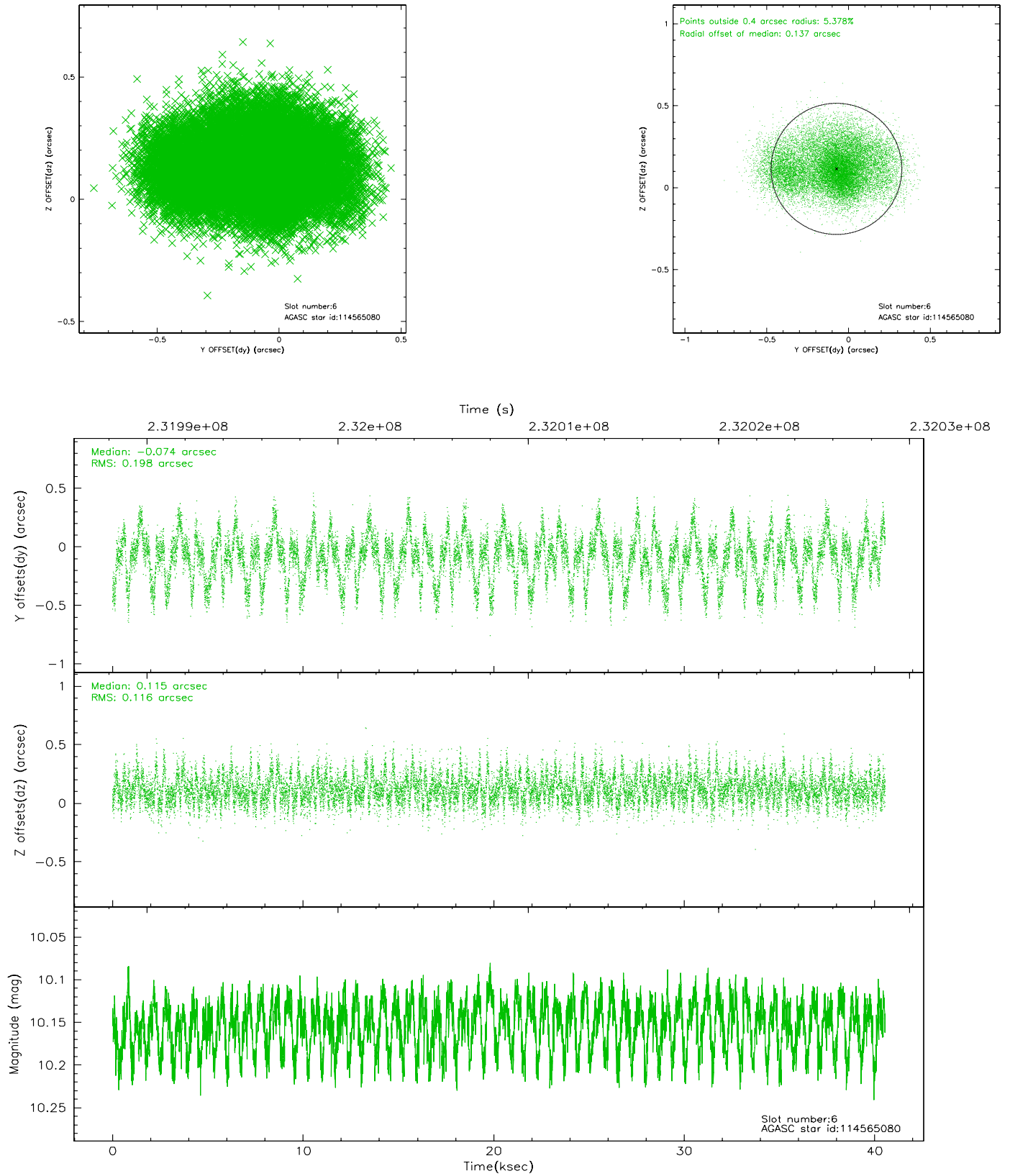
2.4.2 Slot 4



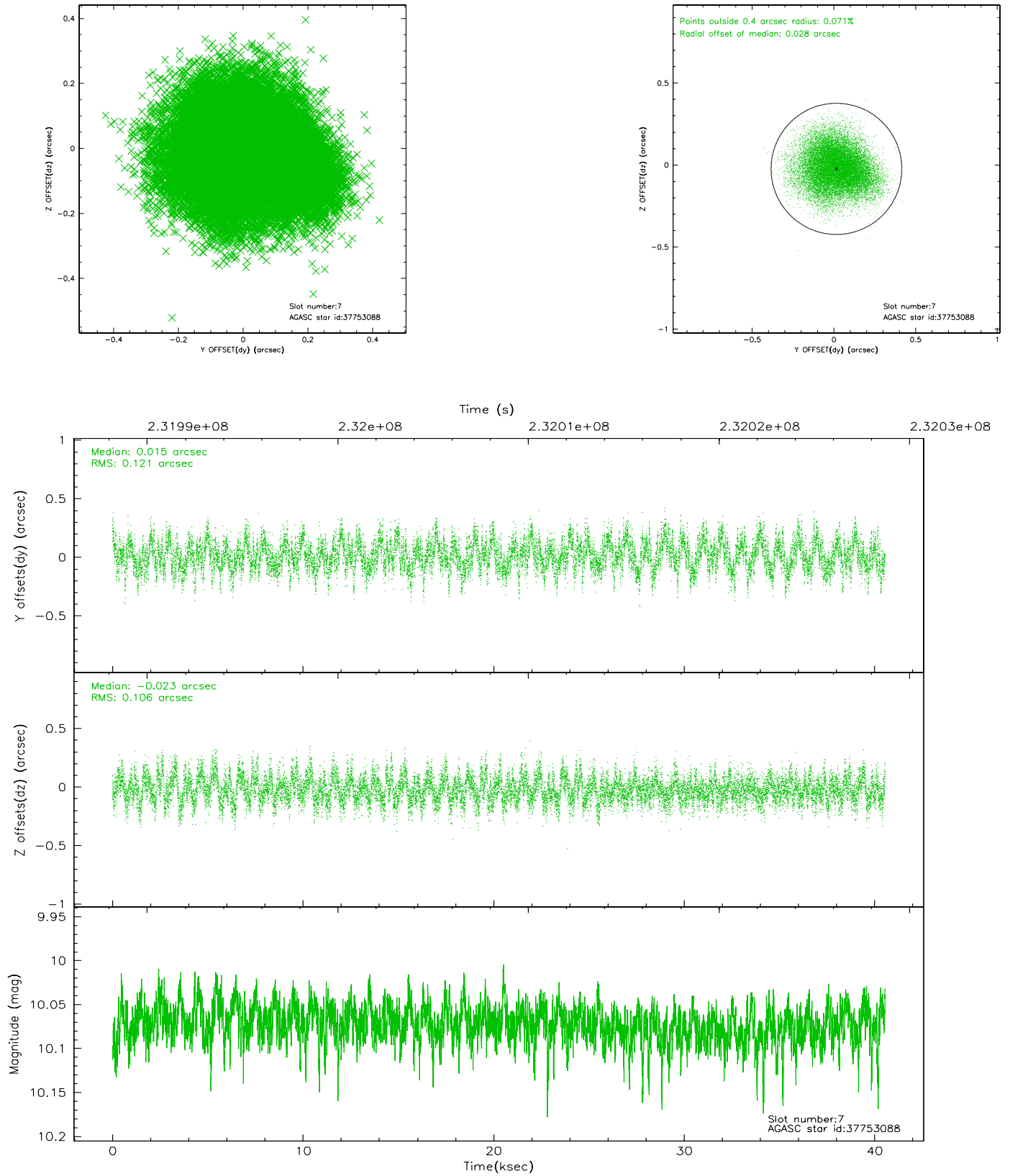
2.4.3 Slot 5



2.4.4 Slot 6

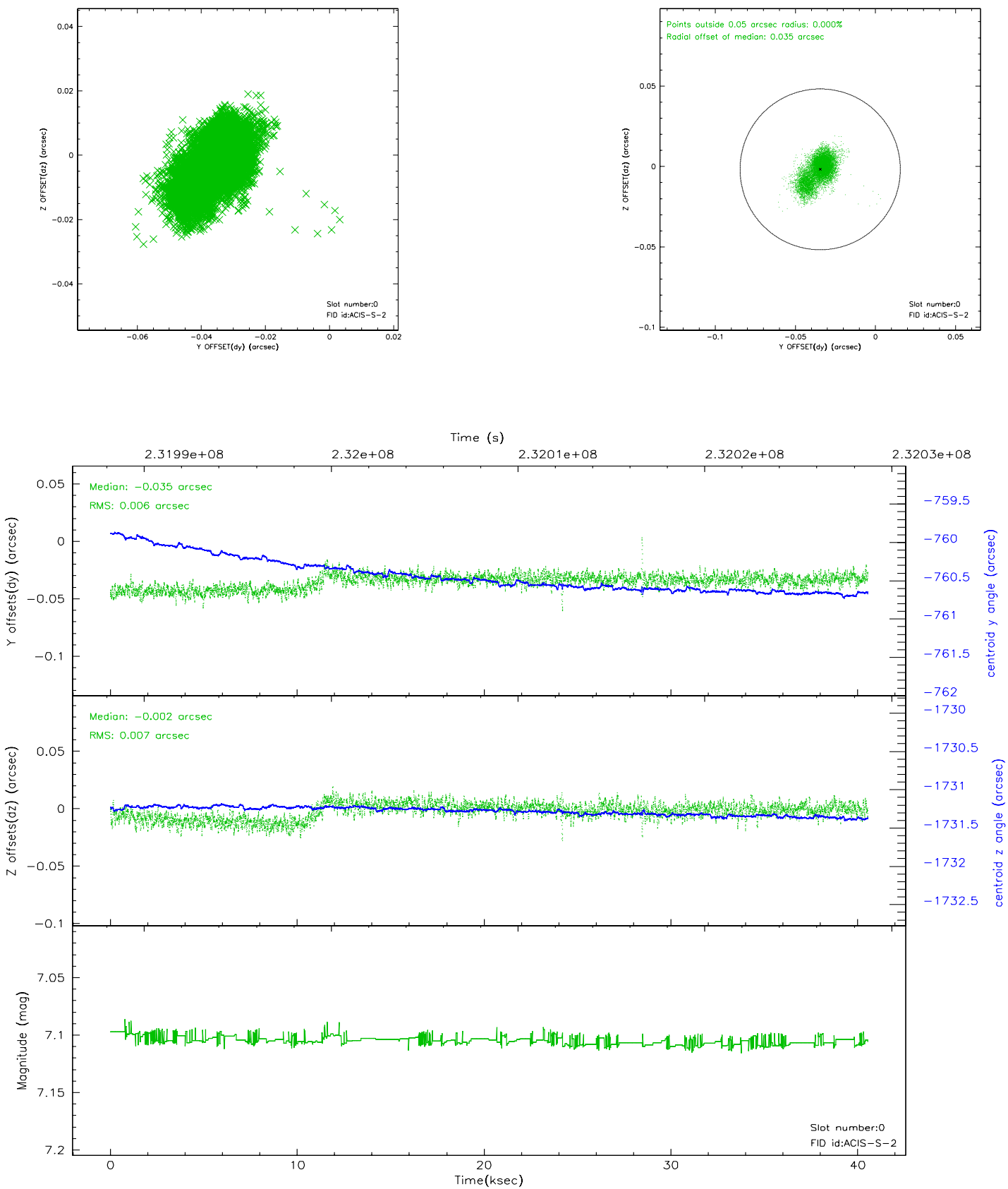


2.4.5 Slot 7

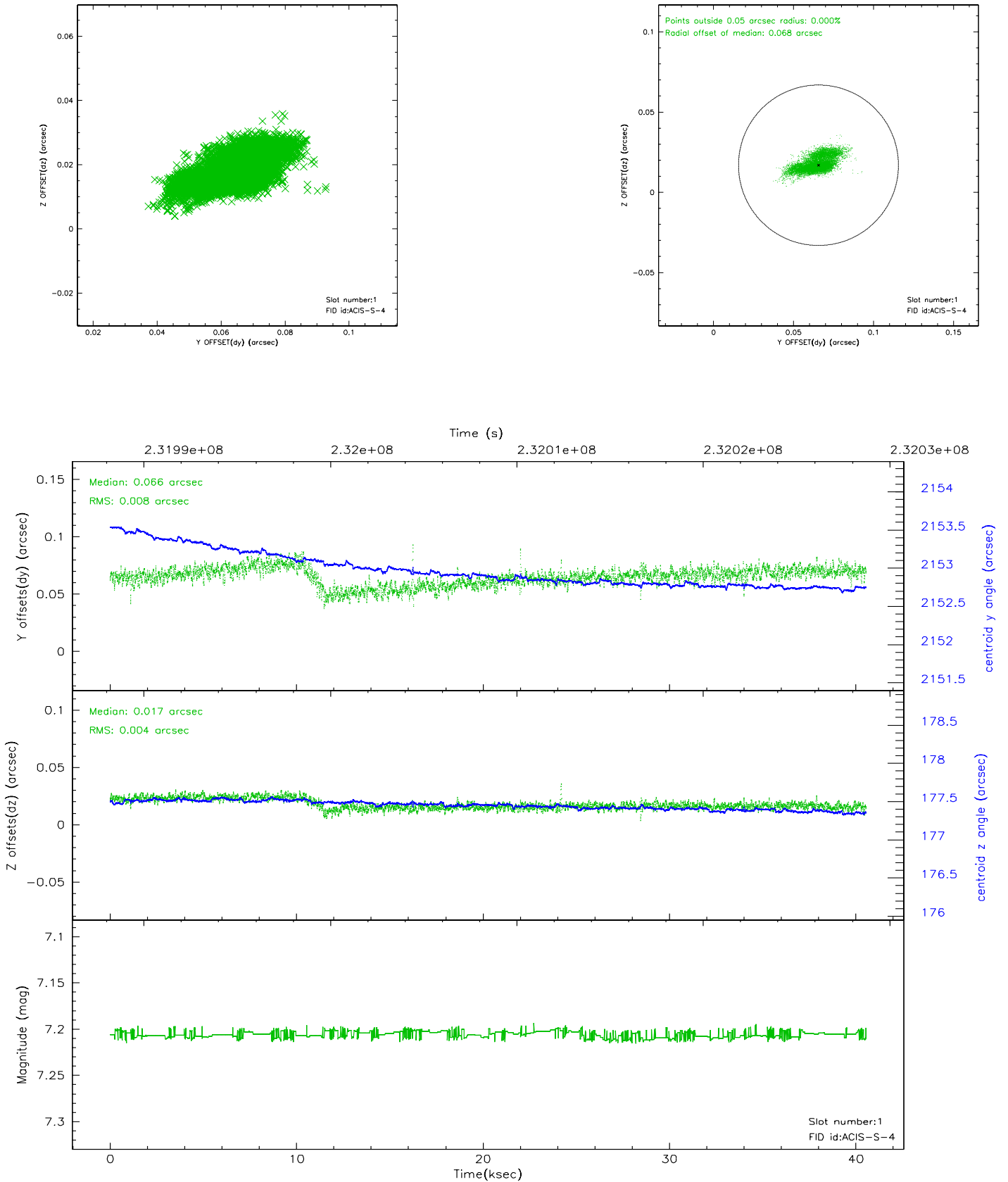


2.5 FID Slots

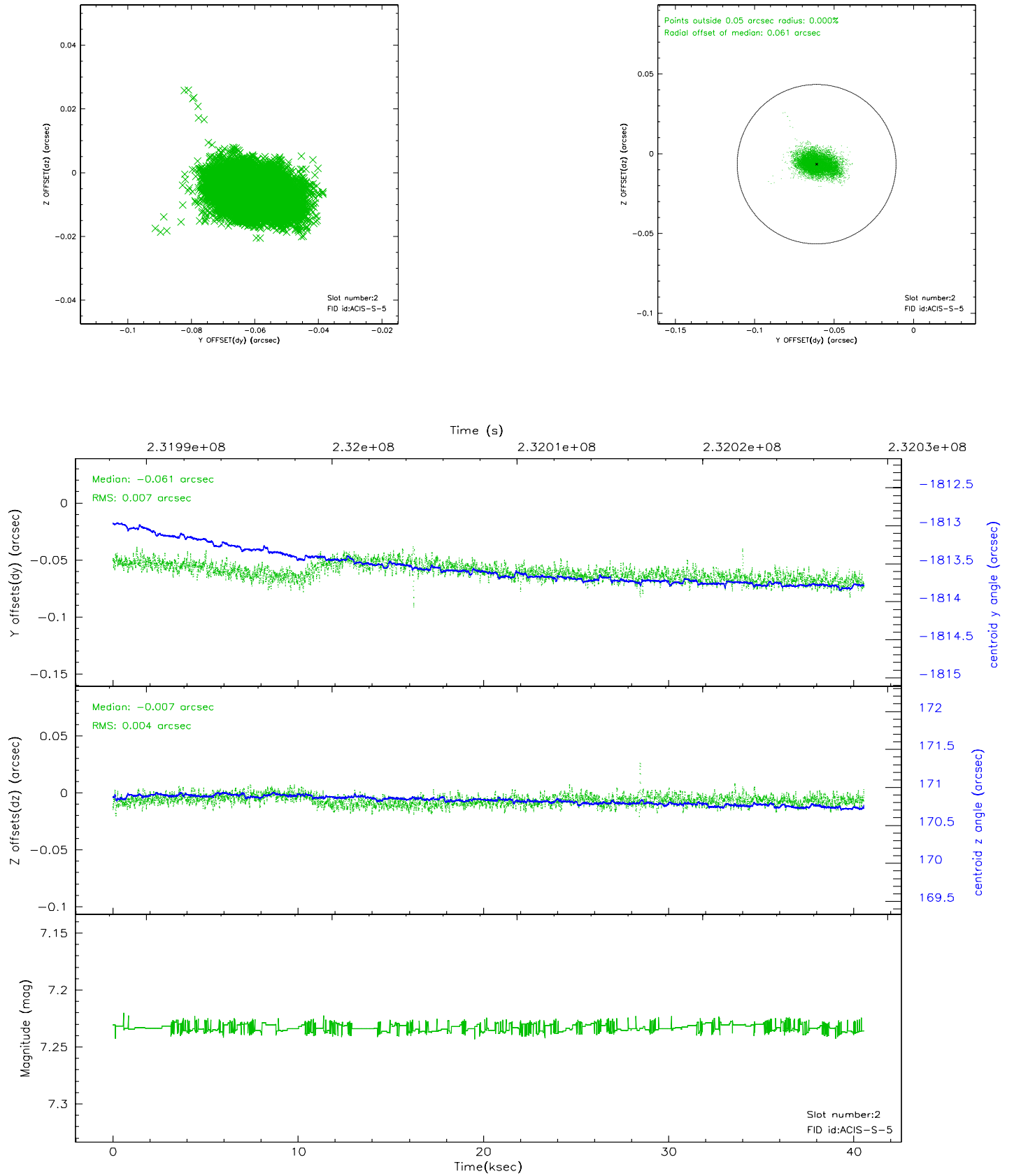
2.5.1 Slot 0



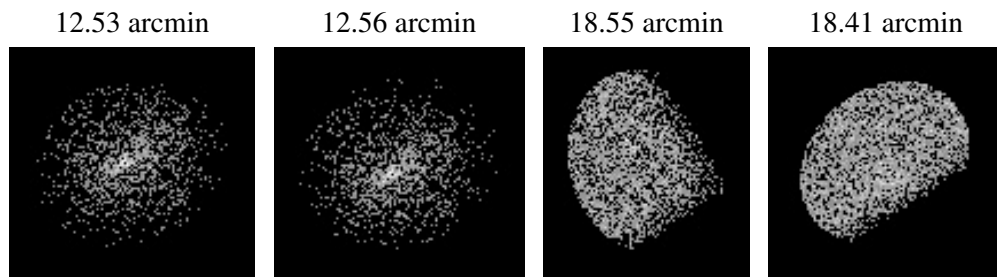
2.5.2 Slot 1



2.5.3 Slot 2



3 Point Sources



A Summary

A.1 Status

V&V Scientist	Beth Sundheim
V&V Date (YYYY-MM-DD)	2006.03.03
V&V Edition	1
V&V Disposition and Status	OK
V&V Charge Time	40.03649

A.2 Comments