

V&V Reference Report

L2 ASCDS Version : 8.5.1

Observation 5902 - L2 Version 3
Chandra X-Ray Center

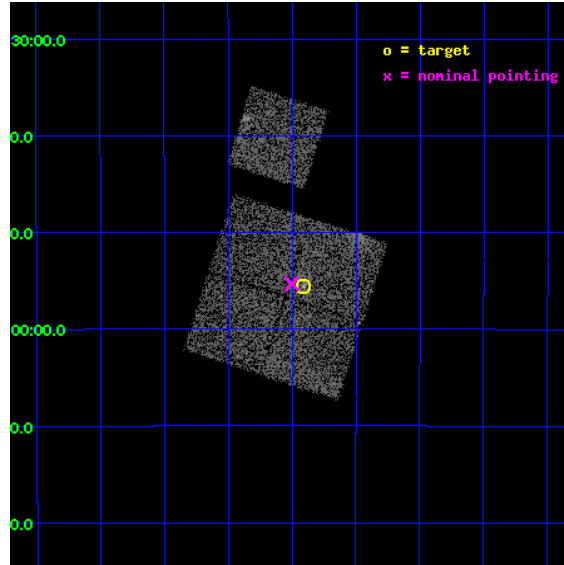
L2 Processing Date : Dec 16 2012

Contents

1	Front	2
2	OBI	3
2.1	OBI	3
2.1.1	Images	3
2.1.2	Bias	3
2.1.3	Parameters	4
2.1.4	Events	4
2.2	Compared Parameters	5
2.3	Aspect	6
2.4	Star Slots	9
2.4.1	Slot 3	9
2.4.2	Slot 4	10
2.4.3	Slot 5	11
2.4.4	Slot 6	12
2.4.5	Slot 7	13
2.5	FID Slots	14
2.5.1	Slot 0	14
2.5.2	Slot 1	15
2.5.3	Slot 2	16
A	Summary	17
A.1	Status	17
A.2	Comments	17

1 Front

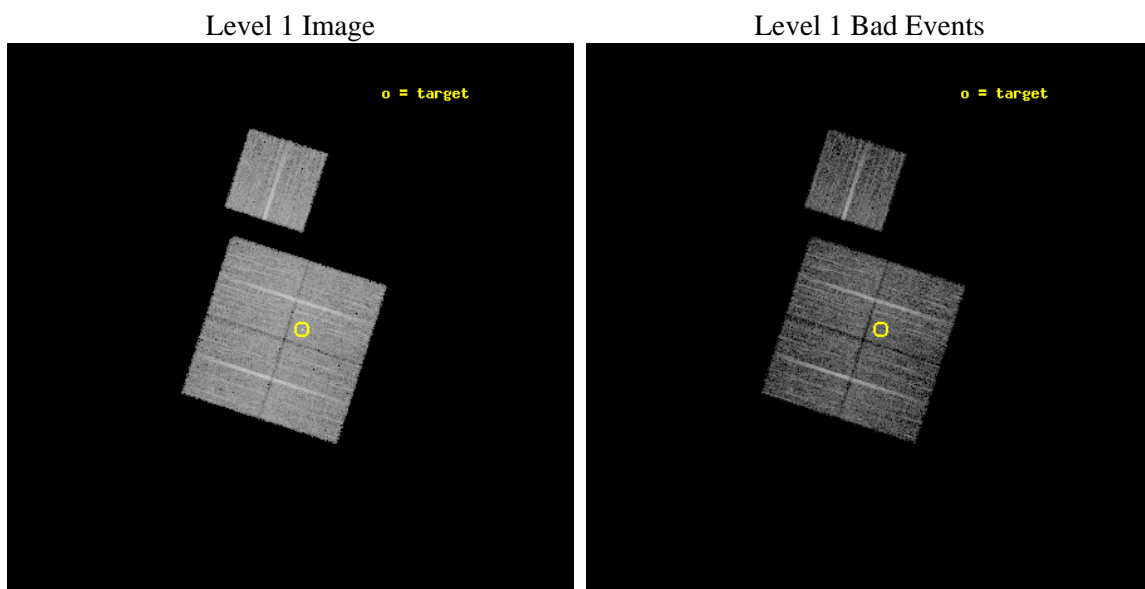
seq_num	600421	Sequence number
obs_id	5902	Observation id
title	Snapshot Observations of X-ray Bright Early-Type Galaxies	Proposal
observer	Dr. Stephen Murray	Principal investigator
object	NGC3078	Source name
dtcycle	0	
cycle	P	events from which exps? Prim/Second/Both
ra_targ	149.6025	Observer's specified target RA [deg]
dec_targ	-26.926667	Observer's specified target Dec [deg]
ra_nom	149.62545554621	Nominal RA [deg]
dec_nom	-26.921985701123	Nominal Dec [deg]
roll_nom	17.85110111696	Nominal Roll [deg]
revision	3	Processing version of data
ontime	8179.1999695301	Sum of GTIs [s]
livetime	8075.630014593	Livetime [s]
ontime0	8179.1999695301	Sum of GTIs [s]
ontime1	8179.1999695301	Sum of GTIs [s]
ontime2	8179.1999695301	Sum of GTIs [s]
ontime3	8179.1999695301	Sum of GTIs [s]
ontime6	8175.9589892626	Sum of GTIs [s]
l2events	22113	Number of level 2 events



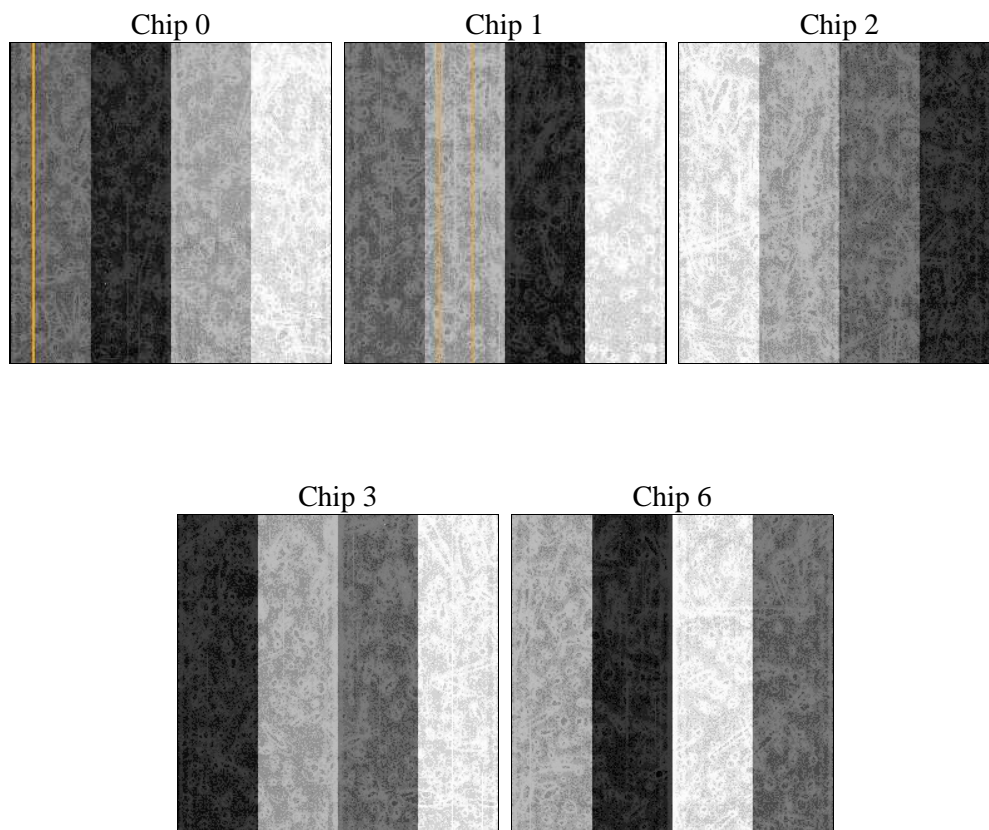
2 OBI

2.1 OBI

2.1.1 Images



2.1.2 Bias



2.1.3 Parameters

obi_num	0	Obi number	sched_exp_time	8000.000000	[s] Scheduled observation exposure time
ascdsver	8.5.1	Processing system revision	ontime	8179.1999695301	Sum of GTIs [s]
caldsver	4.5.5	 	ontime0	8179.1999695301	Sum of GTIs [s]
date	2012-12-17T02:20:39	Date and time of file creation	ontime1	8179.1999695301	Sum of GTIs [s]
revision	3	Processing version of data	ontime2	8179.1999695301	Sum of GTIs [s]
			ontime3	8179.1999695301	Sum of GTIs [s]
			ontime6	8175.9589892626	Sum of GTIs [s]
			l1events	255593	Number of level 1 events

2.1.4 Events

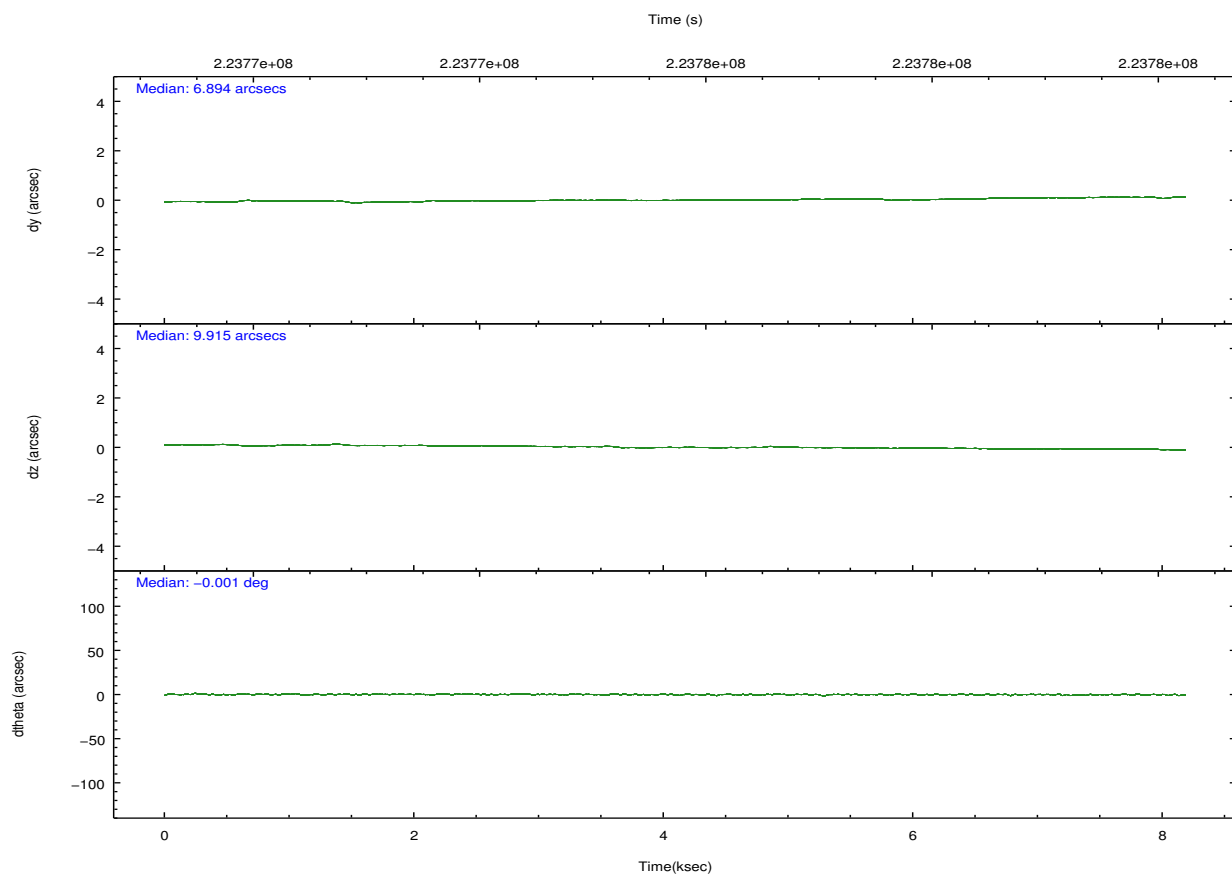
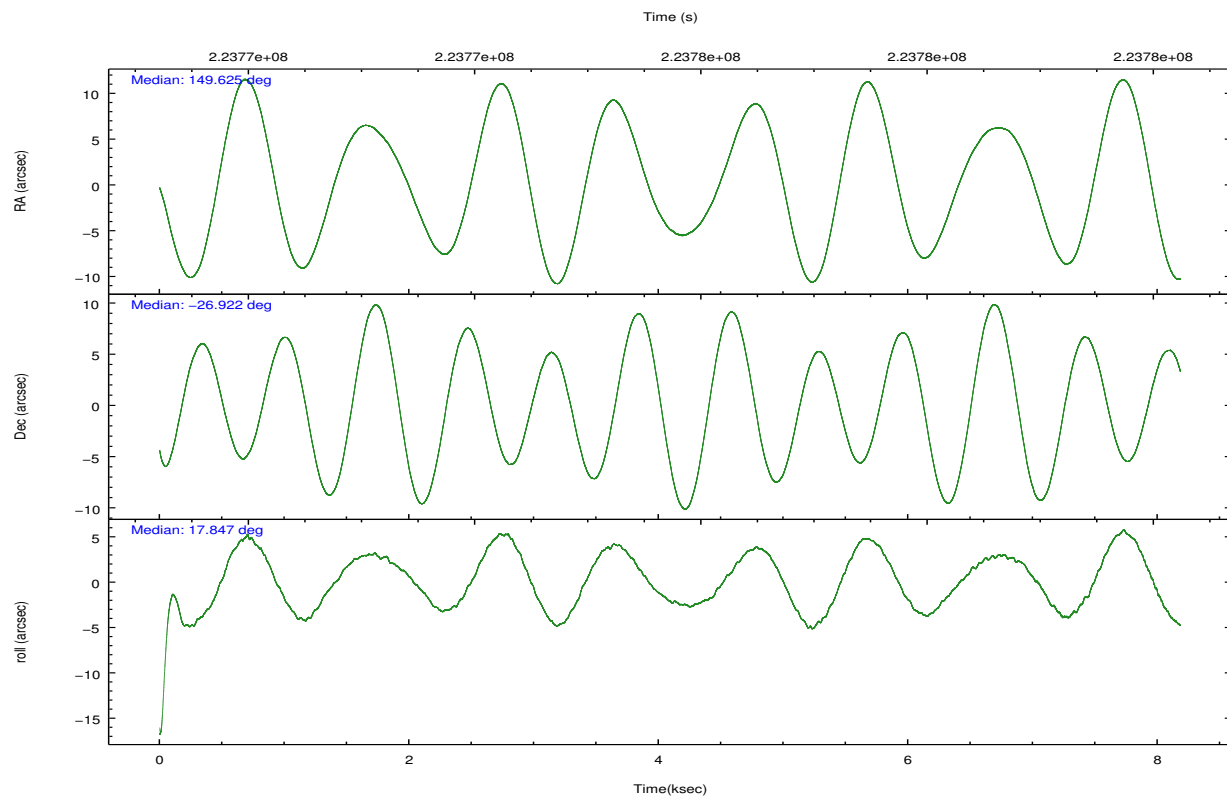
	ccd 0	ccd 1	ccd 2	ccd 3	ccd 6
level 1 events	47577	47165	55270	54181	51400
rejected events	42546	41678	50337	48430	46232
rejected %	89%	88%	91%	89%	89%

	ccd 0	ccd 1	ccd 2	ccd 3	ccd 6
grade 0 events	1803	2114	1958	2701	1945
	3%	4%	3%	4%	3%
grade 1 events	28	26	29	41	28
	0%	0%	0%	0%	0%
grade 2 events	1254	1274	1256	1189	1128
	2%	2%	2%	2%	2%
grade 3 events	654	640	549	589	577
	1%	1%	0%	1%	1%
grade 4 events	565	625	556	619	608
	1%	1%	1%	1%	1%
grade 5 events	1813	2034	1813	2104	2148
	3%	4%	3%	3%	4%
grade 6 events	1049	1173	913	995	1239
	2%	2%	1%	1%	2%
grade 7 events	40411	39279	48196	45943	43727
	84%	83%	87%	84%	85%

2.2 Compared Parameters

Parameter	Planned	Actual	Parameter	Planned	Actual
Instrument	ACIS	ACIS	Obspar format version number	7	7
Detector	ACIS-01236	ACIS-01236	Obspar file type	PREDICTED	ACTUAL
Grating	NONE	NONE	Obspar update status	NONE	UPDATED
Data mode	VFAINT	VFAINT	Number of optional ACIS chips dropped	0	0
Observation mode	POINTING	POINTING	On-chip summing requested	N	N
[deg] Pointing RA	149.604980	149.625455546209	Subarray requested	NONE	NONE
[deg] Pointing Dec	-26.942407	-26.92198570112328	Alternating exposures requested	N	N
[deg] Pointing Roll	17.633155	17.85110111696041	[s] Primary exposure time	0.000000	3.2
[mm] SIM focus pos	-0.782348	-0.7809083437167272			
[mm] SIM defocus	0	0.001439871863259334			
[mm] SIM translation stage pos	-231.092463	-231.0932336816812			
[mm] SIM translation stage offset	-2.5	-2.499219321248518			
[s] Observation start time (MET)	223771820.184000	223770562.56542			
Observation start date	2005-02-02T22:49:16	2005-02-02T22:29:22			
[s] Observation end time (MET)	223779820.184000	223780769.00338			
Observation end date	2005-02-03T01:02:36	2005-02-03T01:19:29			
Read mode	TIMED	TIMED			

2.3 Aspect

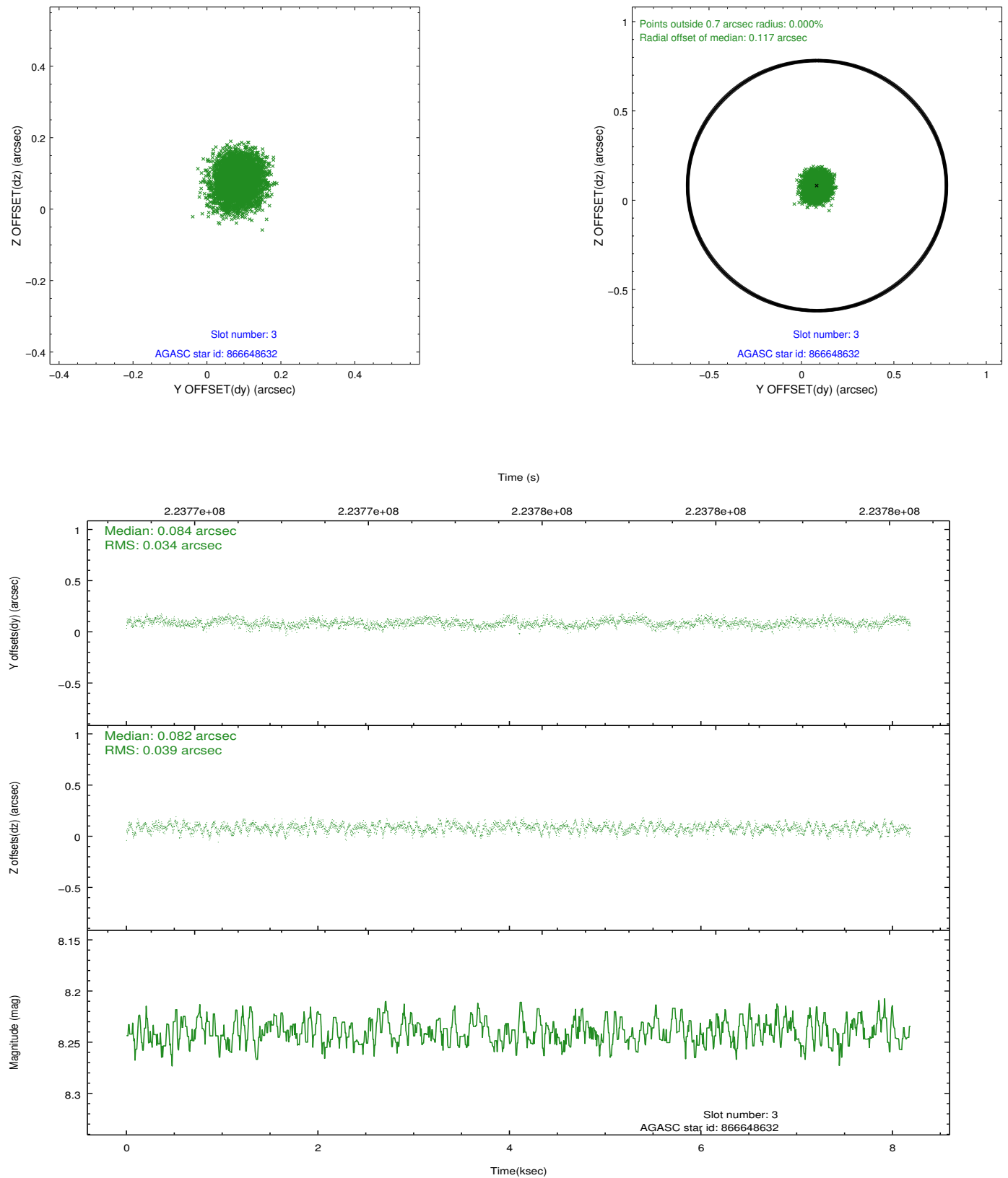


Slot Statistics

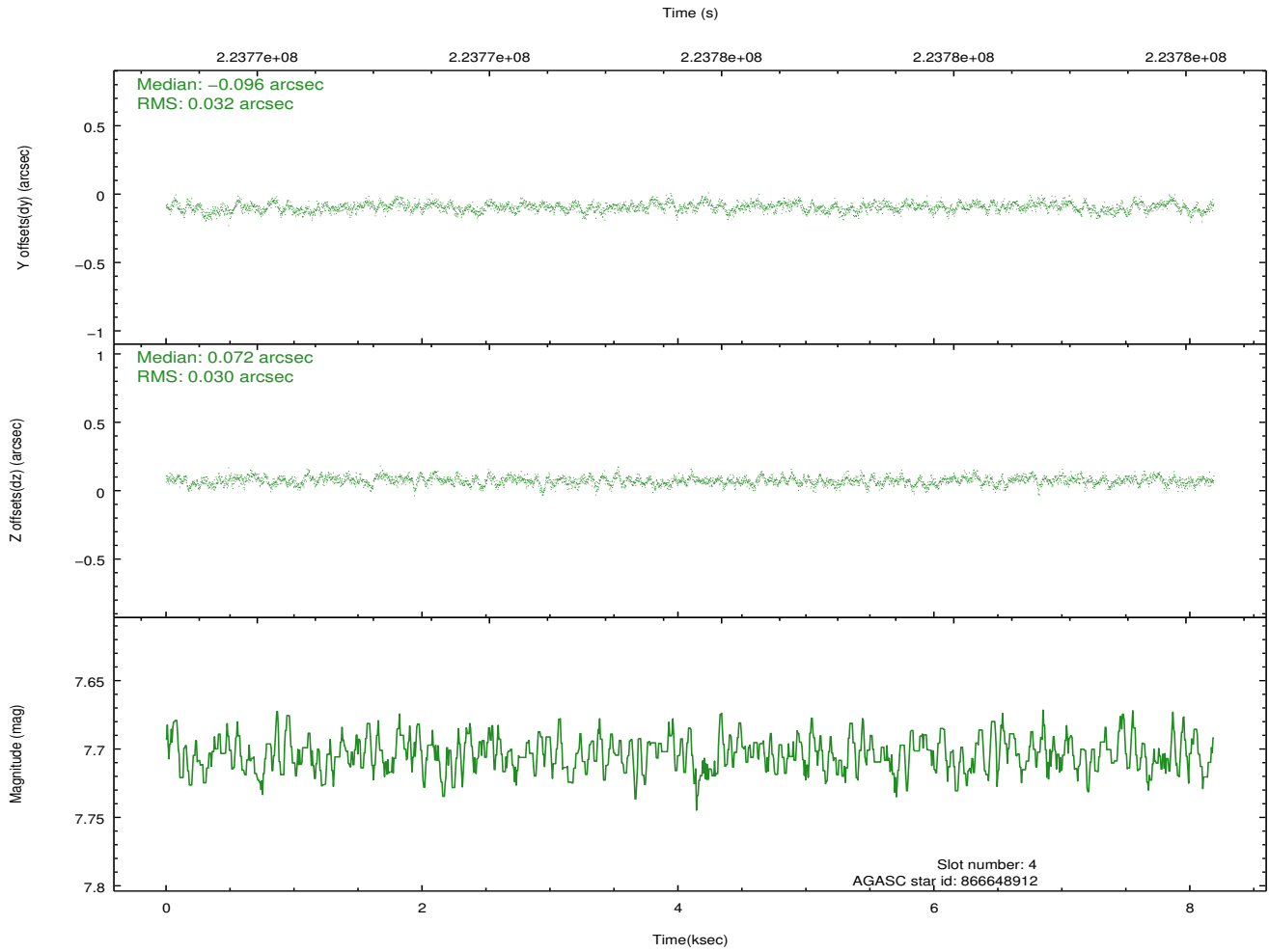
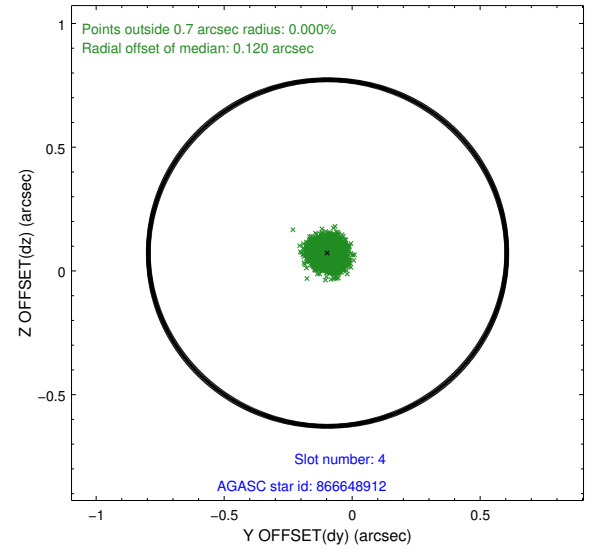
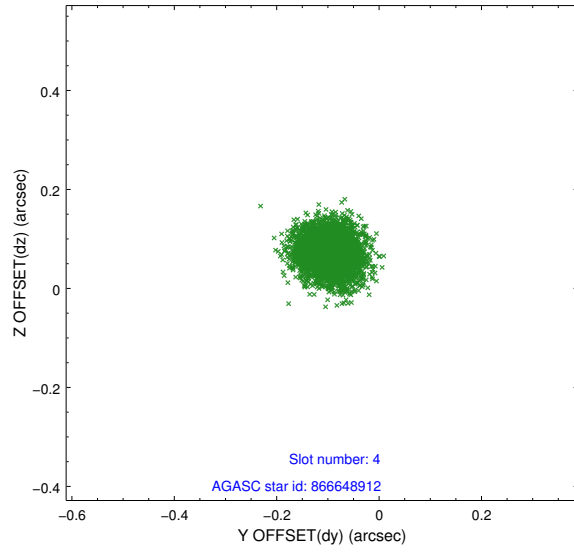
slot	status	id	mag	n_pts	med_dy	med_dz	dr1	dr2	ra	dec	mean_y	mean_z
0	FID	ACIS-I-1	7.25	1997	0.052	-0.051	0.006	0.011	0.000000	0.000000	932.76	-884.70
1	FID	ACIS-I-5	7.23	1997	-0.192	0.054	0.006	0.010	0.000000	0.000000	-1815.17	1012.58
2	FID	ACIS-I-6	7.25	1997	0.049	0.067	0.007	0.011	0.000000	0.000000	397.62	1657.83
3	GUIDE	866648632	8.24	3994	0.084	0.082	0.055	0.088	149.352115	-27.196183	-1048.53	-625.88
4	GUIDE	866648912	7.70	3992	-0.096	0.072	0.046	0.076	150.150265	-27.155483	1431.23	-1263.74
5	GUIDE	866654232	6.69	3994	0.062	0.016	0.050	0.083	149.225377	-27.475153	-1736.43	-1462.46
6	GUIDE	866659448	7.05	3994	-0.203	-0.153	0.042	0.069	149.966960	-26.397813	1705.52	1512.88
7	GUIDE	866661624	8.69	3993	0.153	-0.021	0.067	0.108	149.030650	-26.914967	-1727.54	649.05

2.4 Star Slots

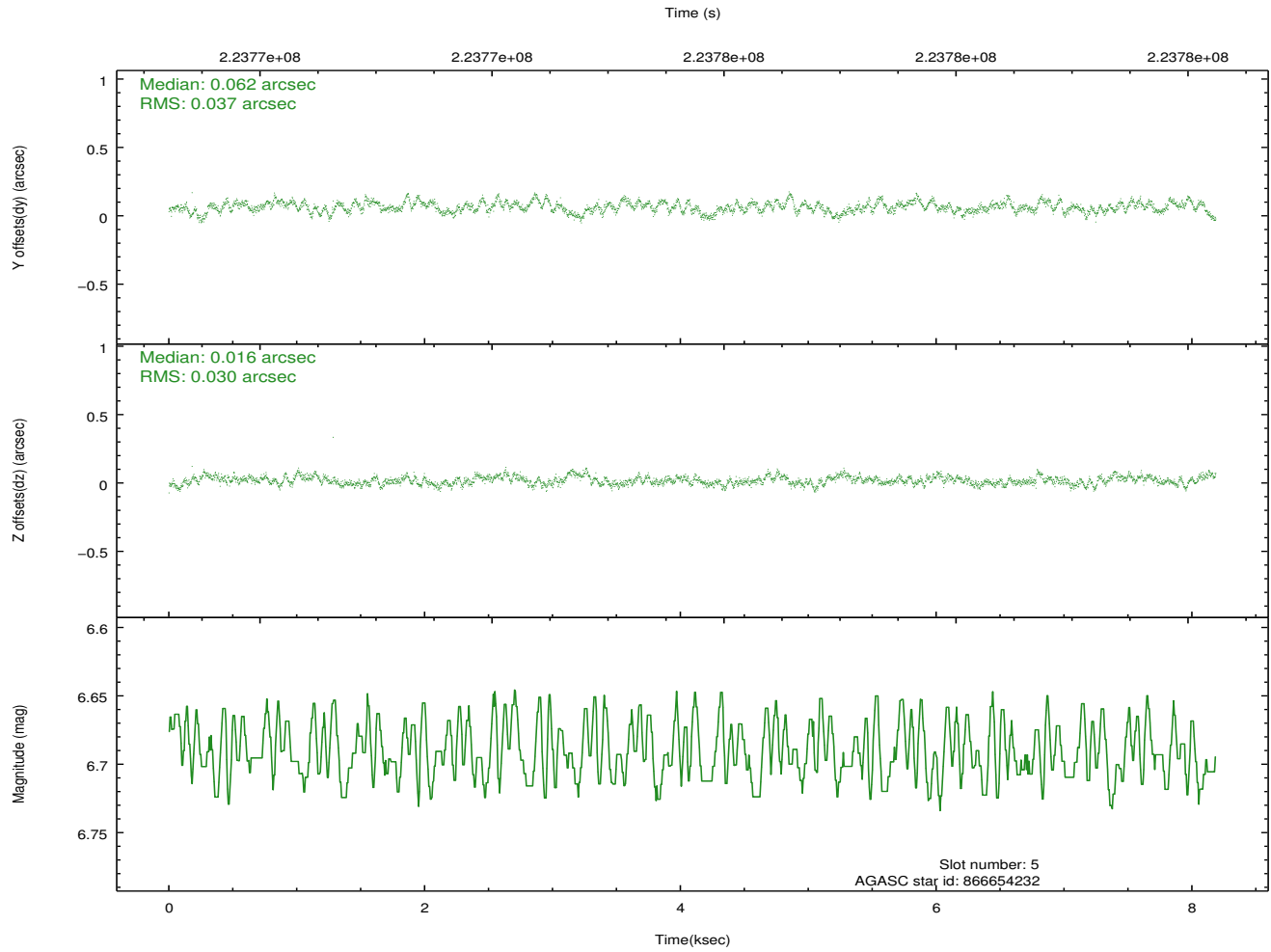
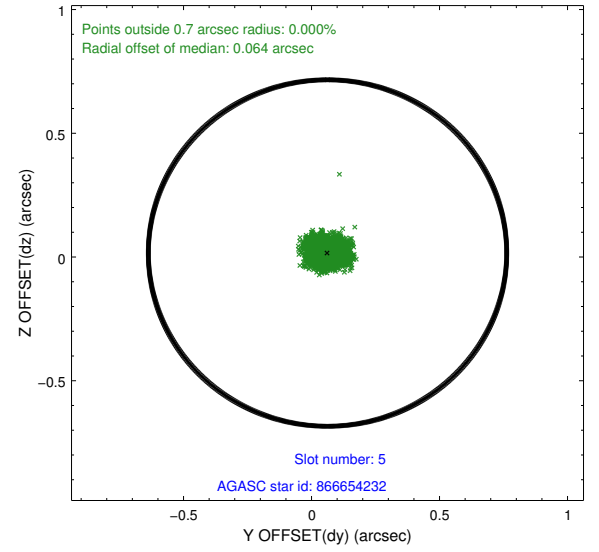
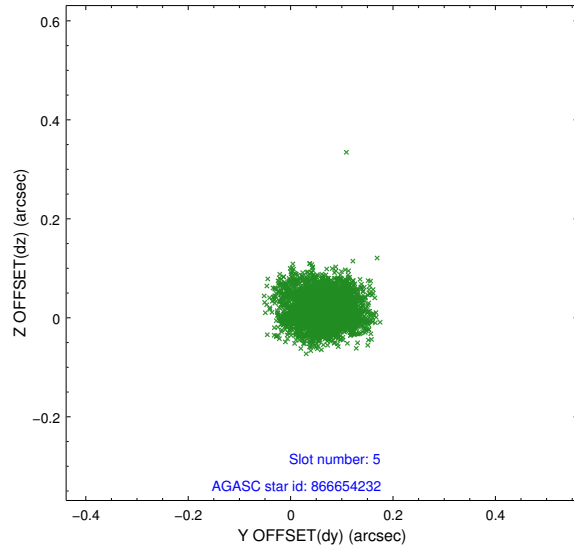
2.4.1 Slot 3



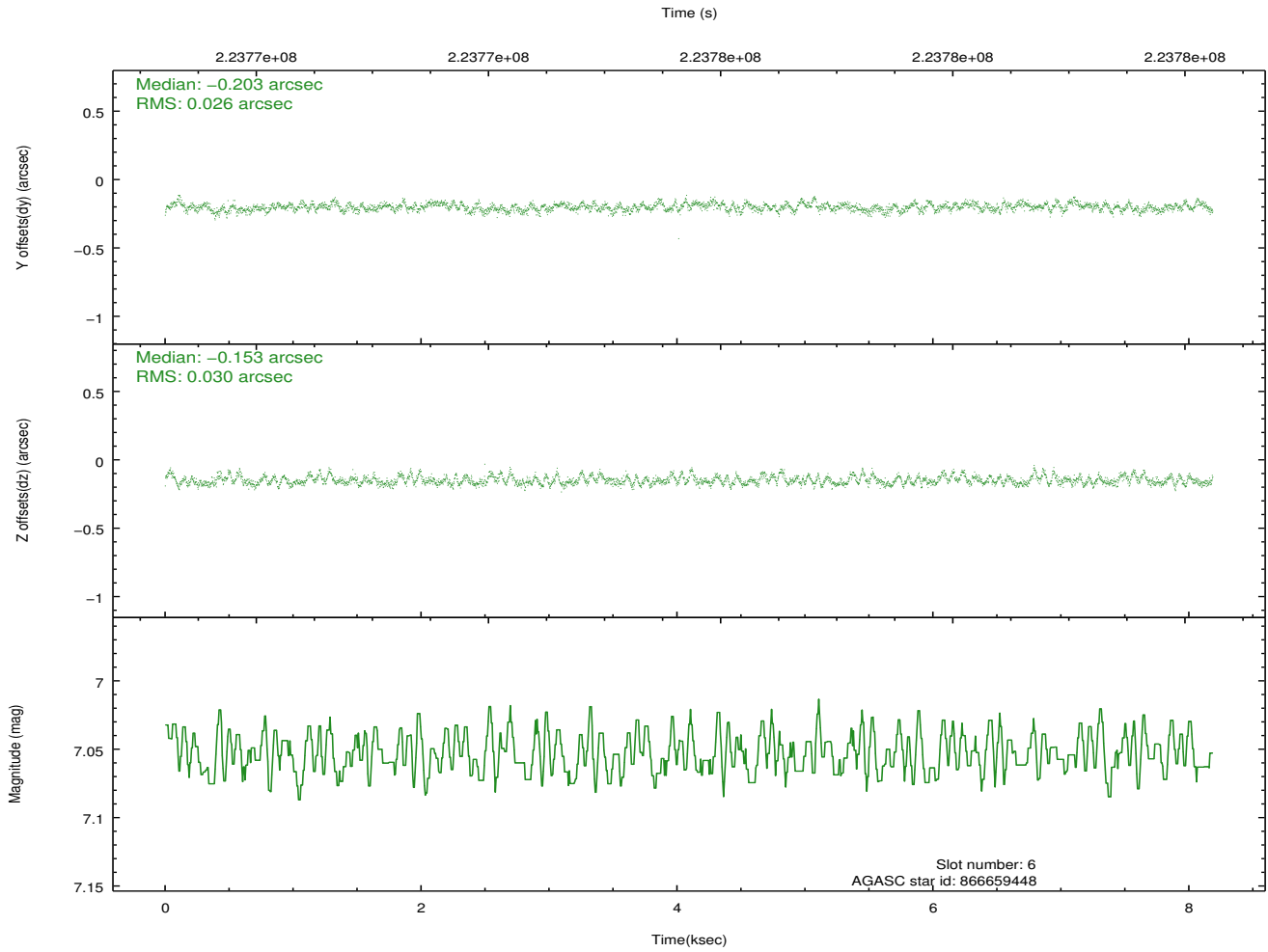
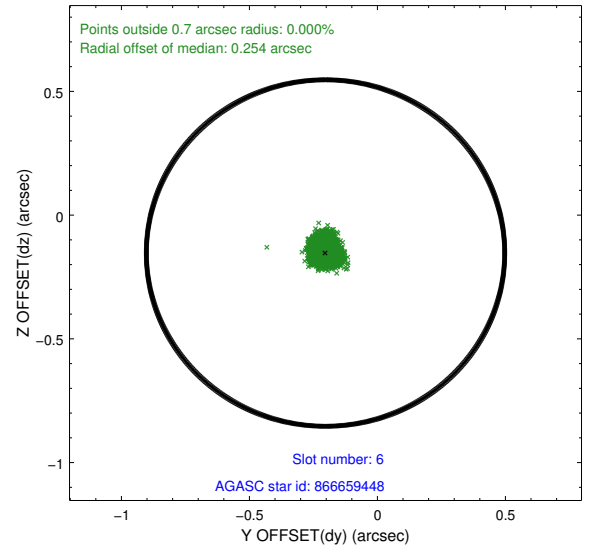
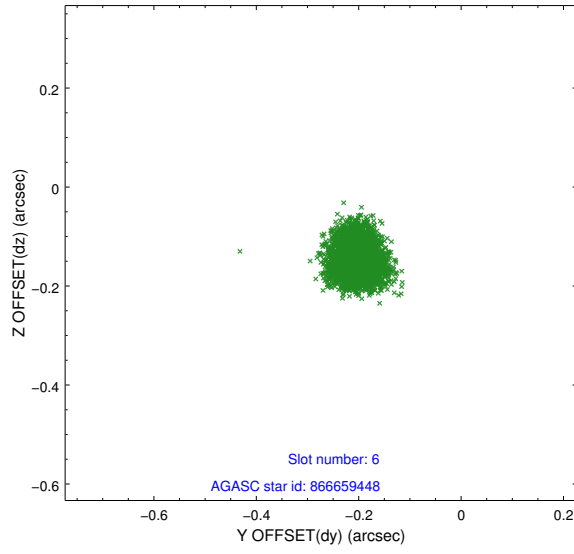
2.4.2 Slot 4



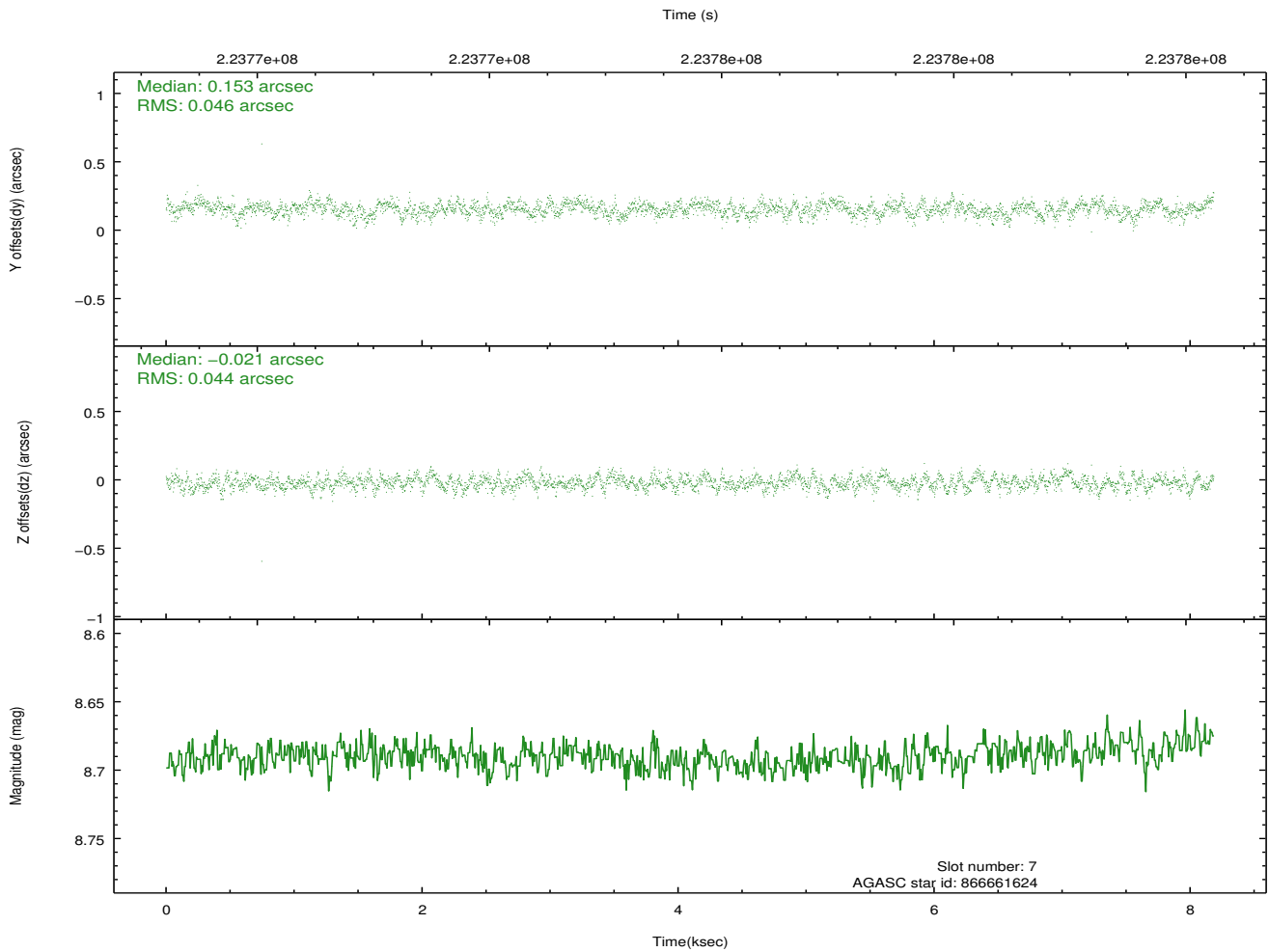
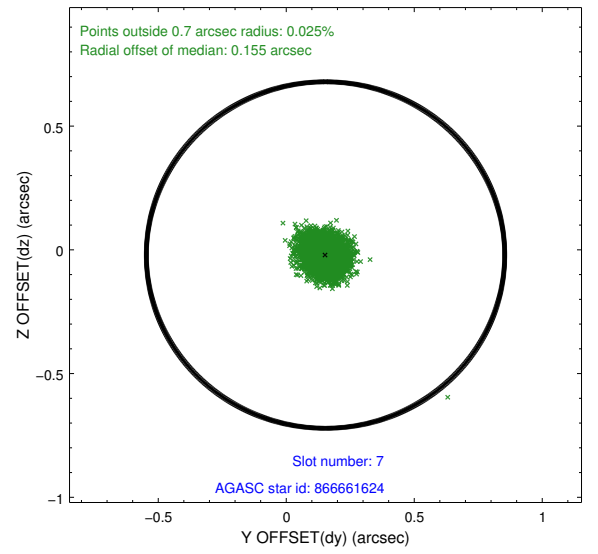
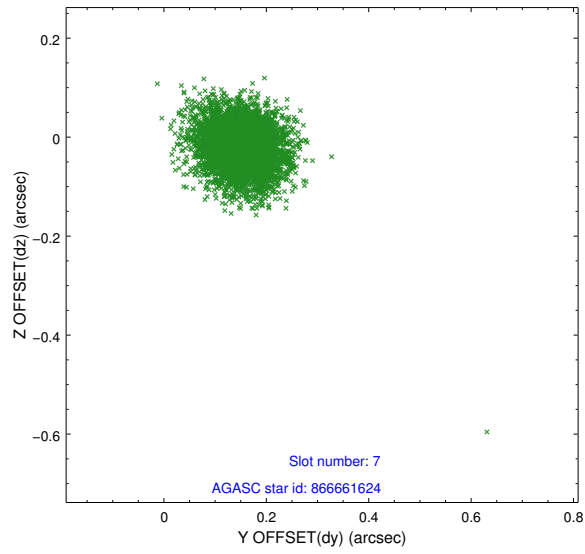
2.4.3 Slot 5



2.4.4 Slot 6

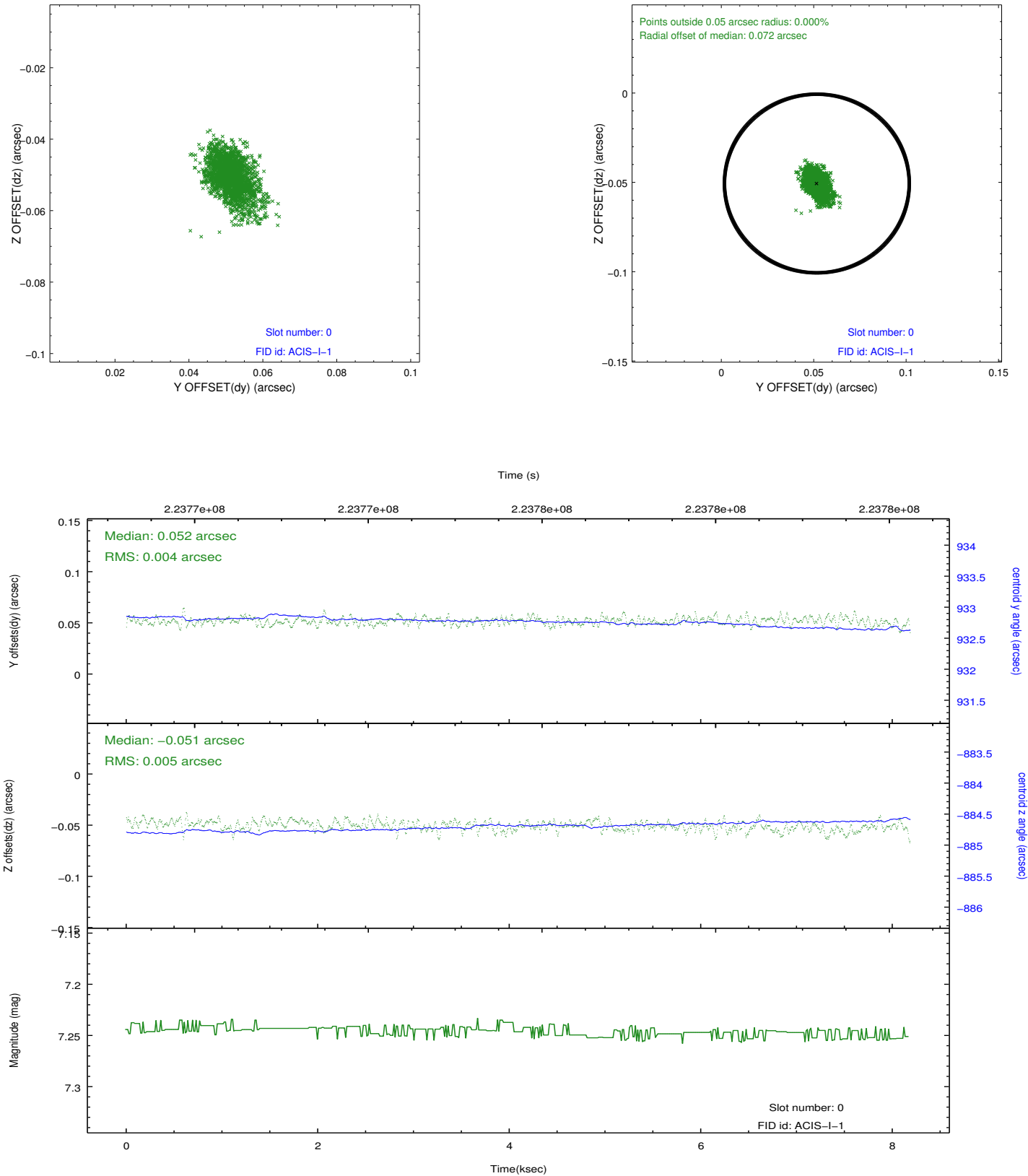


2.4.5 Slot 7

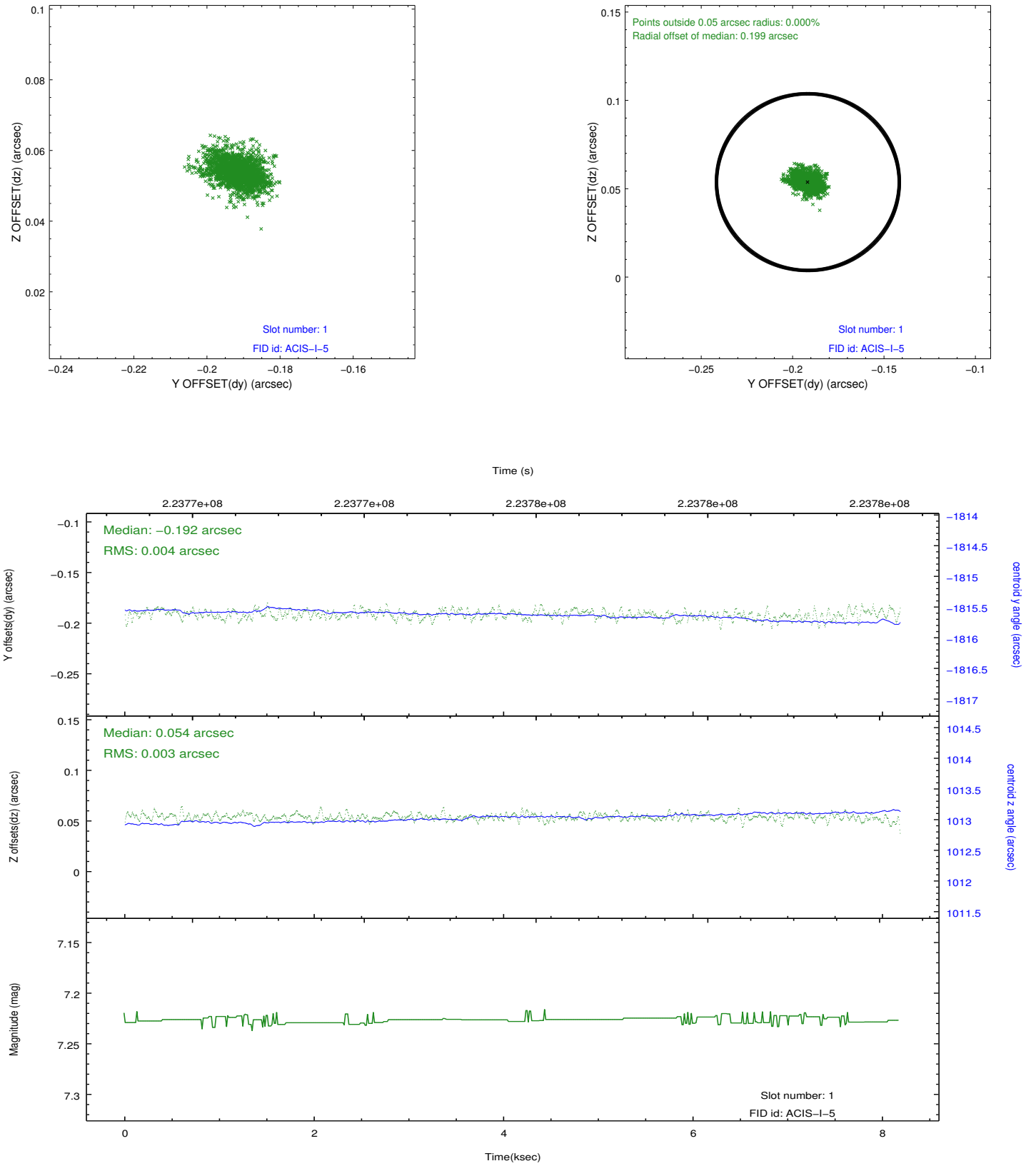


2.5 FID Slots

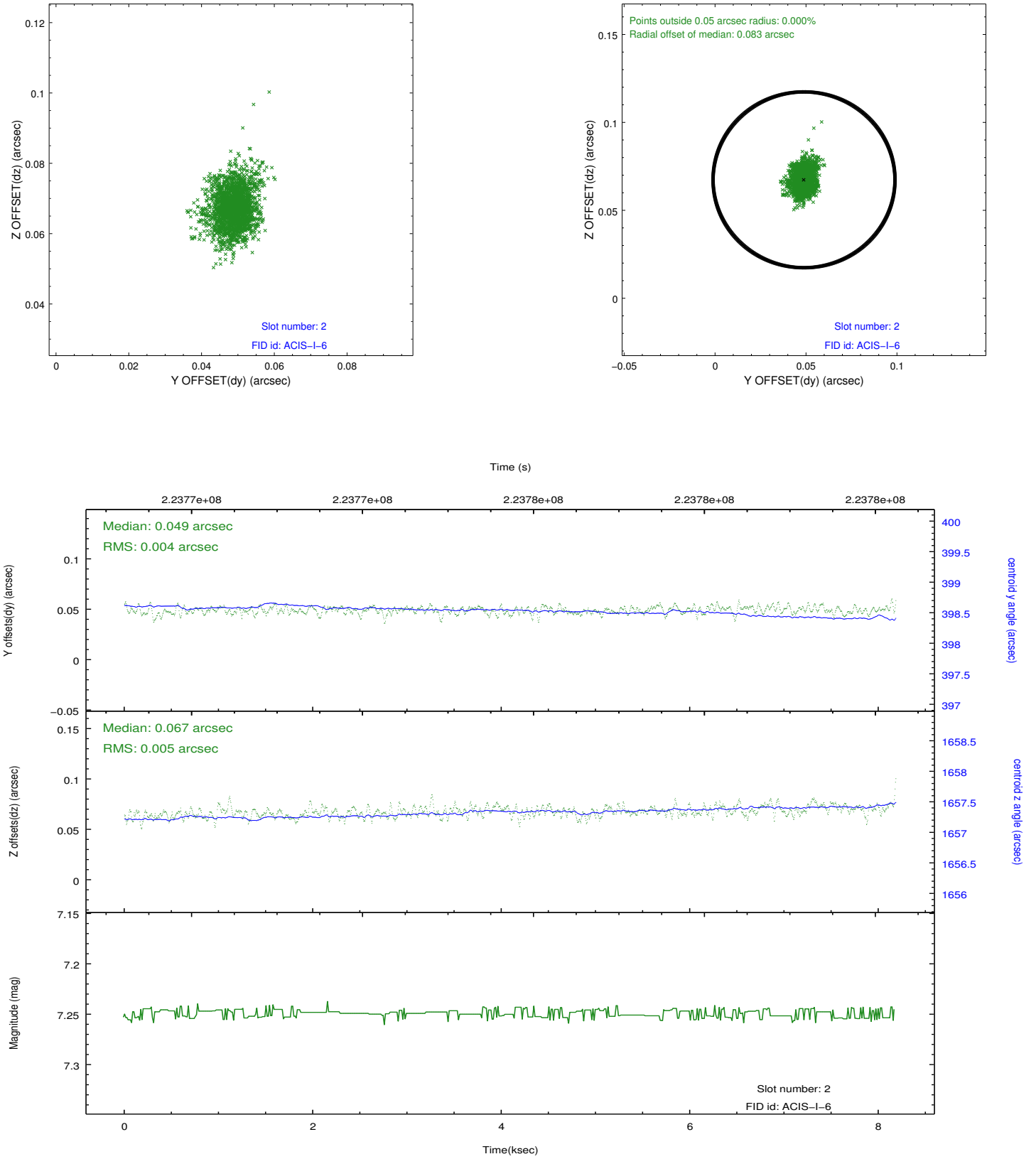
2.5.1 Slot 0



2.5.2 Slot 1



2.5.3 Slot 2



A Summary

A.1 Status

V&V Scientist	Jen Lauer
V&V Date (YYYY-MM-DD)	2013.01.09
V&V Edition	1
V&V Disposition and Status	OK
V&V Charge Time	8.179199

A.2 Comments