

# V&V Reference Report

## L2 ASCDS Version : 8.4.4

Observation 58582 - L2 Version 3  
Chandra X-Ray Center

L2 Processing Date : Apr 17 2012

## Contents

<b>1</b>	<b>Front</b>	<b>2</b>
<b>2</b>	<b>OBI</b>	<b>3</b>
2.1	OBI . . . . .	3
2.1.1	Images . . . . .	3
2.1.2	Bias . . . . .	3
2.1.3	Parameters . . . . .	4
2.1.4	Events . . . . .	4
2.2	Compared Parameters . . . . .	5
2.3	Star Slots . . . . .	6
2.4	FID Slots . . . . .	6
<b>A</b>	<b>Summary</b>	<b>7</b>
A.1	Status . . . . .	7
A.2	Comments . . . . .	7

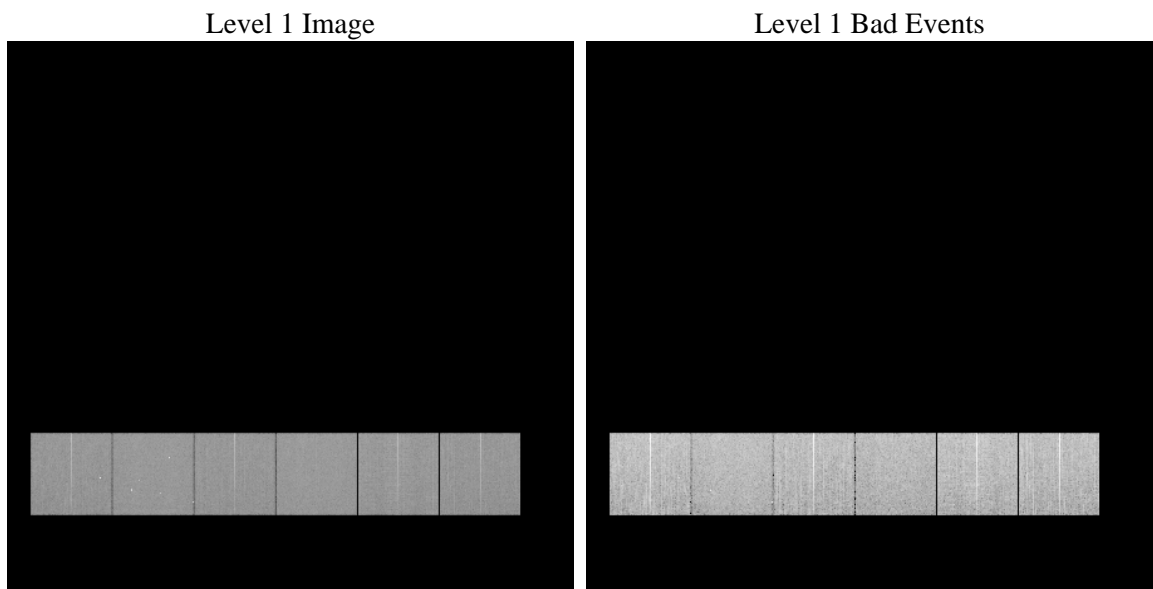
# 1 Front

seq_num	&#160	Sequence number
obs_id	58582	Observation id
title	ACIS-456789 diagnostics	Proposal title
observer	CHANDRA engineering request/realtime commanding	Principal investig
object	&#160	Source name
dtcycle	0	&#160
cycle	P	events from which exps? Prim/Second/Both
ra_targ	0.0	Observer's specified target RA [deg]
dec_targ	0.0	Observer's specified target Dec [deg]
ra_nom	199.09293387622	Nominal RA [deg]
dec_nom	31.075269222937	Nominal Dec [deg]
roll_nom	70.710792822364	Nominal Roll [deg]
revision	3	Processing version of data
ontime	8179.1999695897	Sum of GTIs [s]
livetime	8075.6300146518	Livetime [s]
ontime4	8179.1032305956	Sum of GTIs [s]
ontime5	8179.1853106022	Sum of GTIs [s]
ontime6	8179.1442705989	Sum of GTIs [s]
ontime7	8179.1999695897	Sum of GTIs [s]
ontime8	8179.0621905923	Sum of GTIs [s]
ontime9	8179.1999695897	Sum of GTIs [s]
l2events	810549	Number of level 2 events

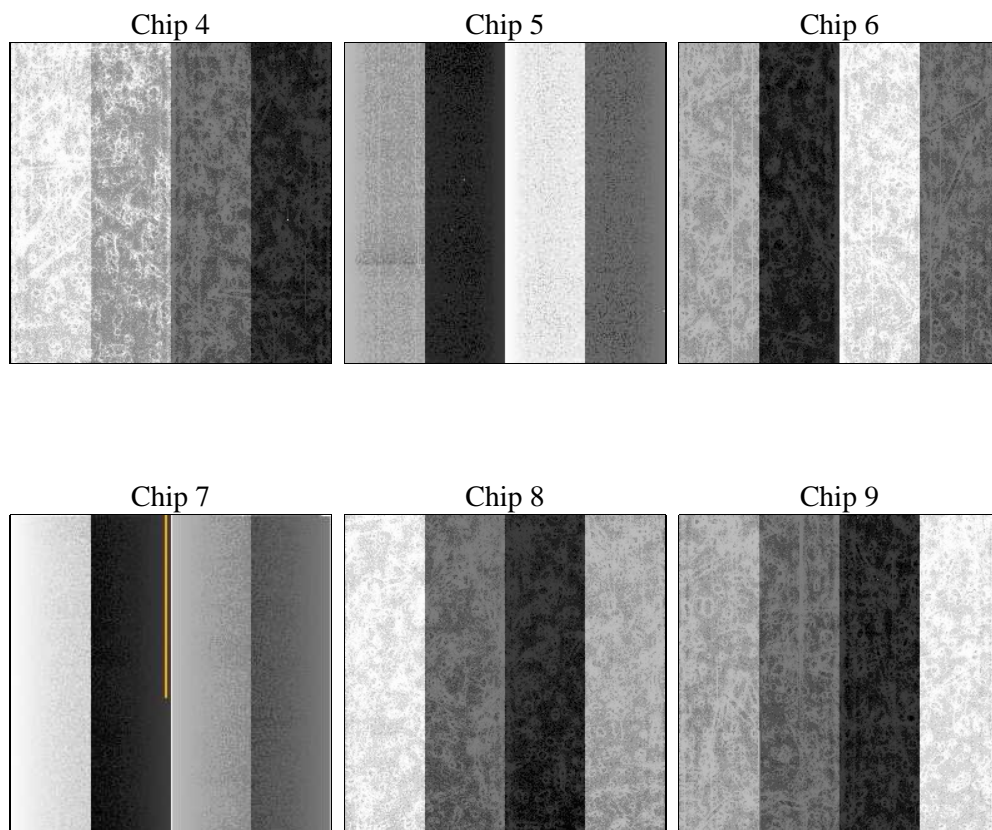
## 2 OBI

### 2.1 OBI

#### 2.1.1 Images



#### 2.1.2 Bias



### 2.1.3 Parameters

obi_num	0	Obi number	sched_exp_time	7560	[s] Scheduled observation exposure time
ascdsver	8.4.4	Processing system revision	ontime	8179.1999695897	Sum of GTIs [s]
caldsver	4.4.9	&#160	ontime4	8179.1032305956	Sum of GTIs [s]
date	2012-04-17T23:06:30	Date and time of file creation	ontime5	8179.1853106022	Sum of GTIs [s]
revision	3	Processing version of data	ontime6	8179.1442705989	Sum of GTIs [s]
			ontime7	8179.1999695897	Sum of GTIs [s]
			ontime8	8179.0621905923	Sum of GTIs [s]
			ontime9	8179.1999695897	Sum of GTIs [s]
			l1events	1309550	Number of level 1 events

### 2.1.4 Events

	ccd 4	ccd 5	ccd 6	ccd 7	ccd 8	ccd 9		ccd 4	ccd 5	ccd 6	ccd 7	ccd 8	ccd 9
level 1 events	209263	224120	212120	227491	227385	209171	grade 0 events	75846	29551	74581	35721	78525	73226
rejected events	79318	68072	73660	62520	78719	75499		36%	13%	35%	15%	34%	35%
rejected %	37%	30%	34%	27%	34%	36%	grade 1 events	704	370	445	183	506	518
								0%	0%	0%	0%	0%	0%
							grade 2 events	20605	56154	24582	36165	26886	23354
								9%	25%	11%	15%	11%	11%
							grade 3 events	8772	8210	8899	16057	10339	8870
								4%	3%	4%	7%	4%	4%
							grade 4 events	8797	8196	8872	15962	10089	8694
								4%	3%	4%	7%	4%	4%
							grade 5 events	4153	9680	4214	10322	5230	4575
								1%	4%	1%	4%	2%	2%
							grade 6 events	17002	55182	22662	62401	24035	20603
								8%	24%	10%	27%	10%	9%
							grade 7 events	73384	56777	67865	50680	71775	69331
								35%	25%	31%	22%	31%	33%

## 2.2 Compared Parameters

Parameter	Planned	Actual
Instrument	ACIS	ACIS
Detector	ACIS-456789	ACIS-456789
Grating	NONE	NONE
Data mode	FAINT	FAINT
Observation mode	SECONDARY	SECONDARY
[deg] Pointing RA	199.0929508511782	199.0929338762234
[deg] Pointing Dec	31.07514947561171	31.07526922293691
[deg] Pointing Roll	70.71078446725889	70.71079282236377
[mm] SIM focus pos	-0.68282252473119	-0.68282252473119
[mm] SIM defocus	0.8505140384245534	0.8505140384245534
[mm] SIM translation stage pos	250.4660330802	250.4660330802
[mm] SIM translation stage offset	-0.01005726120527584	-0.01005726120527584
[s] Observation start time (MET)	284703713.738579	284703713.738579
Observation start date	2007-01-09T04:50:00	2007-01-09T04:21:53
[s] Observation end time (MET)	284716869.241972	284716869.241972
Observation end date	2007-01-09T06:56:00	2007-01-09T08:01:09
Read mode	TIMED	TIMED

Parameter	Planned	Actual
Obspar format version number	7	7
Obspar file type	PREDICTED	ACTUAL
Obspar update status	OVERRIDE	OVERRIDE
Number of optional ACIS chips dropped	0	0
On-chip summing requested	N	N
Subarray requested	NONE	NONE
Alternating exposures requested	N	N
[s] Primary exposure time	3.2	3.2

## **2.3 Star Slots**

## **2.4 FID Slots**

## A Summary

### A.1 Status

V&V Scientist	Beth Sundheim
V&V Date (YYYY-MM-DD)	2012.04.19
V&V Edition	1
V&V Disposition and Status	OK
V&V Charge Time	8.1791999695897

### A.2 Comments