

# V&V Reference Report

## L2 ASCDS Version : 8.4.4

Observation 58332 - L2 Version 2  
Chandra X-Ray Center

L2 Processing Date : Apr 27 2012

## Contents

<b>1</b>	<b>Front</b>	<b>2</b>
<b>2</b>	<b>OBI</b>	<b>3</b>
2.1	OBI . . . . .	3
2.1.1	Images . . . . .	3
2.1.2	Bias . . . . .	3
2.1.3	Parameters . . . . .	4
2.1.4	Events . . . . .	4
2.2	Compared Parameters . . . . .	5
2.3	Star Slots . . . . .	6
2.4	FID Slots . . . . .	6
<b>A</b>	<b>Summary</b>	<b>7</b>
A.1	Status . . . . .	7
A.2	Comments . . . . .	7

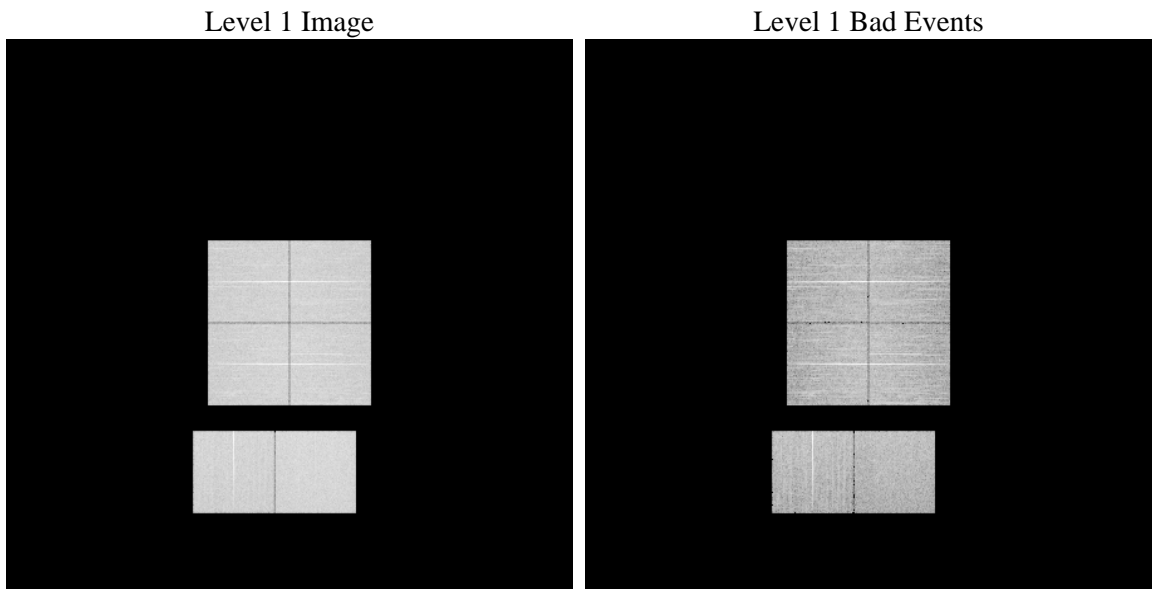
# 1 Front

seq_num	&#160	Sequence number
obs_id	58332	Observation id
title	ACIS-012367 diagnostics	Proposal title
observer	CHANDRA engineering request/realtime commanding	Principal investig
object	&#160	Source name
dtcycle	0	&#160
cycle	P	events from which exps? Prim/Second/Both
ra_targ	0.0	Observer's specified target RA [deg]
dec_targ	0.0	Observer's specified target Dec [deg]
ra_nom	249.79128582664	Nominal RA [deg]
dec_nom	-20.236721805009	Nominal Dec [deg]
roll_nom	258.73414395956	Nominal Roll [deg]
revision	2	Processing version of data
ontime	8226.8207510114	Sum of GTIs [s]
livetime	8122.6477930653	Livetime [s]
ontime0	8226.7797110081	Sum of GTIs [s]
ontime1	8226.7386710048	Sum of GTIs [s]
ontime2	8226.6976310015	Sum of GTIs [s]
ontime3	8226.8617910147	Sum of GTIs [s]
ontime6	8226.6565909982	Sum of GTIs [s]
ontime7	8226.8207510114	Sum of GTIs [s]
l2events	715740	Number of level 2 events

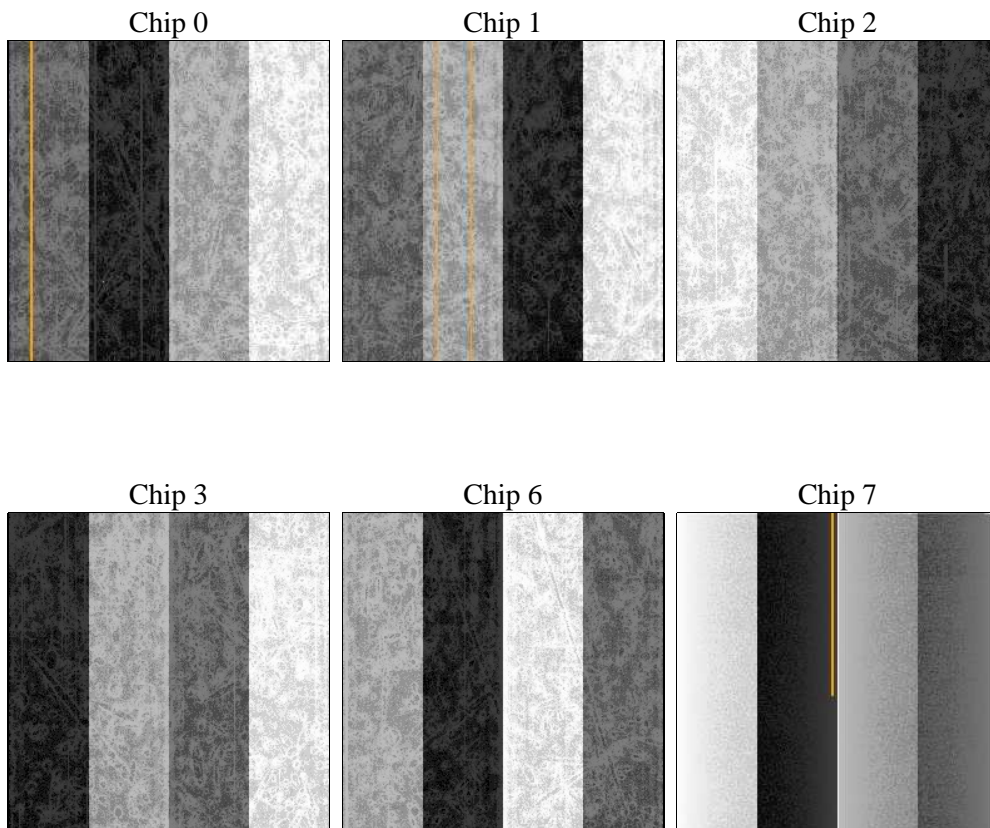
## 2 OBI

### 2.1 OBI

#### 2.1.1 Images



#### 2.1.2 Bias



### 2.1.3 Parameters

obi_num	0	Obi number	sched_exp_time	0.0	[s] Scheduled observation exposure time
ascdsver	8.4.4	Processing system revision	ontime	8226.8207510114	Sum of GTIs [s]
caldsver	4.4.9	&#160	ontime0	8226.7797110081	Sum of GTIs [s]
date	2012-04-27T13:36:10	Date and time of file creation	ontime1	8226.7386710048	Sum of GTIs [s]
revision	2	Processing version of data	ontime2	8226.6976310015	Sum of GTIs [s]
			ontime3	8226.8617910147	Sum of GTIs [s]
			ontime6	8226.6565909982	Sum of GTIs [s]
			ontime7	8226.8207510114	Sum of GTIs [s]
			l1events	1192874	Number of level 1 events

### 2.1.4 Events

	ccd 0	ccd 1	ccd 2	ccd 3	ccd 6	ccd 7		ccd 0	ccd 1	ccd 2	ccd 3	ccd 6	ccd 7
level 1 events	190245	189787	195679	197556	198637	220970	grade 0 events	64380	63742	66691	67104	66110	32182
rejected events	71685	71115	76130	77366	75043	66927		33%	33%	34%	33%	33%	14%
rejected %	37%	37%	38%	39%	37%	30%	grade 1 events	419	393	560	488	424	169
								0%	0%	0%	0%	0%	0%
							grade 2 events	21230	21968	20423	20632	21820	33622
								11%	11%	10%	10%	10%	15%
							grade 3 events	7833	7883	8034	8155	8054	14692
								4%	4%	4%	4%	4%	6%
							grade 4 events	7864	7538	7950	8264	7757	14614
								4%	3%	4%	4%	3%	6%
							grade 5 events	3880	4066	3718	4337	4353	10698
								2%	2%	1%	2%	2%	4%
							grade 6 events	17929	18262	17123	16735	20559	59892
								9%	9%	8%	8%	10%	27%
							grade 7 events	66710	65935	71180	71841	69560	55101
								35%	34%	36%	36%	35%	24%

## 2.2 Compared Parameters

Parameter	Planned	Actual	Parameter	Planned	Actual
Instrument	ACIS	ACIS	Obspar format version number	7	7
Detector	ACIS-012367	ACIS-012367	Obspar file type	PREDICTED	ACTUAL
Grating	NONE	NONE	Obspar update status	NONE	UPDATED
Data mode	FAINT	FAINT	On-chip summing requested	N	N
Observation mode	SECONDARY	SECONDARY	Subarray requested	NONE	NONE
[deg] Pointing RA	0	249.7912858266397	Alternating exposures requested	N	N
[deg] Pointing Dec	0	-20.23672180500904	[s] Primary exposure time	3.2	3.2
[deg] Pointing Roll	0.0	258.7341439595554			
[mm] SIM focus pos	-0.782348	-0.7809083437167272			
[mm] SIM defocus	0	0.7524282956875696			
[mm] SIM translation stage pos	-233.592463	250.466033080201			
[mm] SIM translation stage offset	0	-0.01005468664627074			
[s] Observation start time (MET)	299771989.356376	299771988.33137			
Observation start date	2007-07-02T13:59:49	2007-07-02T13:59:48			
[s] Observation end time (MET)	299795330.657494	299795329.63249			
Observation end date	2007-07-02T20:28:51	2007-07-02T20:28:49			
Read mode	TIMED	TIMED			

## **2.3 Star Slots**

## **2.4 FID Slots**

## A Summary

### A.1 Status

V&V Scientist	Joy Nichols
V&V Date (YYYY-MM-DD)	2012.04.27
V&V Edition	1
V&V Disposition and Status	OK
V&V Charge Time	8.2268207510114

### A.2 Comments