

# V&V Reference Report

## L2 ASCDS Version : 8.5.1

Observation 5832 - L2 Version 3  
Chandra X-Ray Center

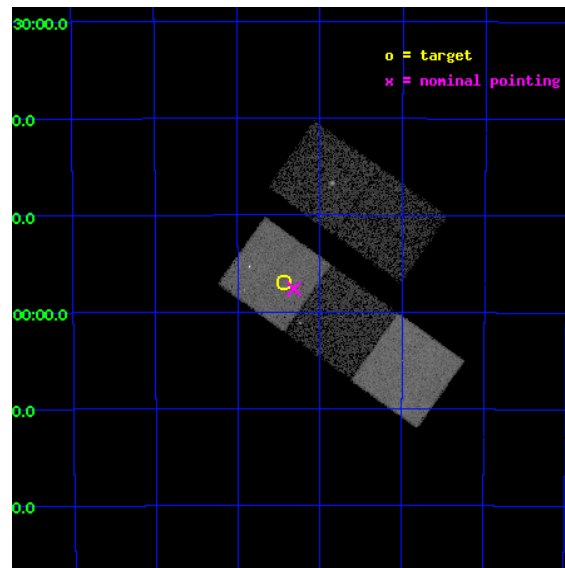
L2 Processing Date : Dec 18 2012

## Contents

<b>1</b>	<b>Front</b>	<b>2</b>
<b>2</b>	<b>OBI</b>	<b>3</b>
2.1	OBI . . . . .	3
2.1.1	Images . . . . .	3
2.1.2	Bias . . . . .	3
2.1.3	Parameters . . . . .	4
2.1.4	Events . . . . .	4
2.2	Compared Parameters . . . . .	5
2.3	Aspect . . . . .	6
2.4	Star Slots . . . . .	9
2.4.1	Slot 3 . . . . .	9
2.4.2	Slot 4 . . . . .	10
2.4.3	Slot 5 . . . . .	11
2.4.4	Slot 6 . . . . .	12
2.4.5	Slot 7 . . . . .	13
2.5	FID Slots . . . . .	14
2.5.1	Slot 0 . . . . .	14
2.5.2	Slot 1 . . . . .	15
2.5.3	Slot 2 . . . . .	16
<b>A</b>	<b>Summary</b>	<b>17</b>
A.1	Status . . . . .	17
A.2	Comments . . . . .	17

# 1 Front

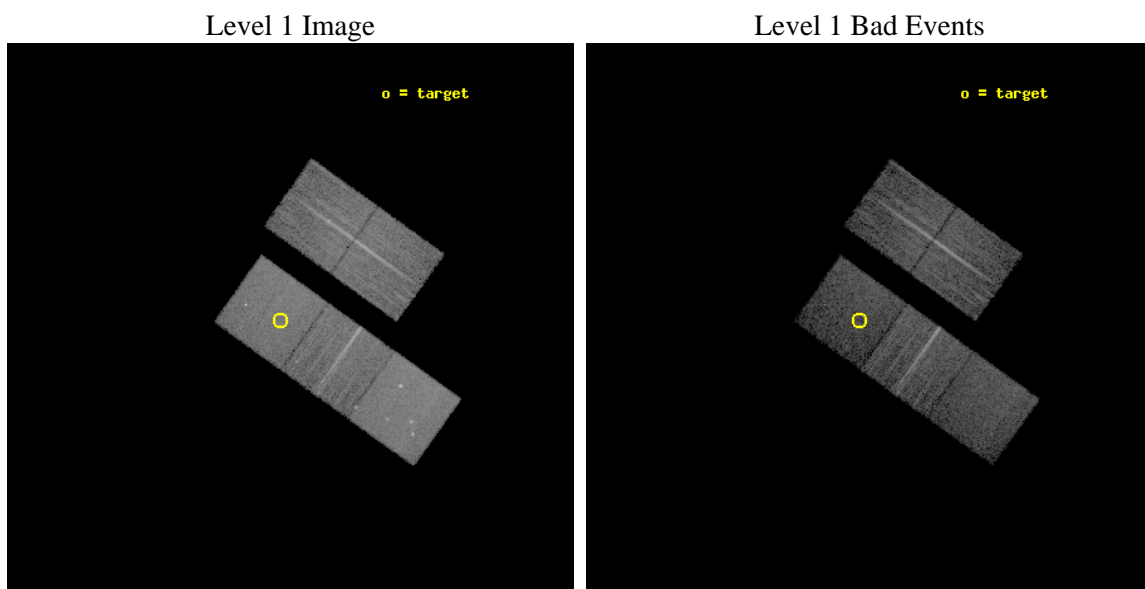
seq_num	800541	Sequence number
obs_id	5832	Observation id
title	X-ray emission from clusters of galaxies from the REFLEX sample.	P
observer	Dr. Peter Predehl	Principal investigator
object	RXCJ0117.8-5455	Source name
dtcycle	0	&#160
cycle	P	events from which exps? Prim/Second/Both
ra_targ	19.36	Observer's specified target RA [deg]
dec_targ	-54.95	Observer's specified target Dec [deg]
ra_nom	19.328957260883	Nominal RA [deg]
dec_nom	-54.960574943171	Nominal Dec [deg]
roll_nom	215.51384361927	Nominal Roll [deg]
revision	3	Processing version of data
ontime	10053.29998064	Sum of GTIs [s]
livetime	9921.9462152616	Livetime [s]
ontime2	10040.731226534	Sum of GTIs [s]
ontime3	10053.29998064	Sum of GTIs [s]
ontime5	10053.29998064	Sum of GTIs [s]
ontime6	10050.158990502	Sum of GTIs [s]
ontime7	10053.29998064	Sum of GTIs [s]
l2events	89273	Number of level 2 events



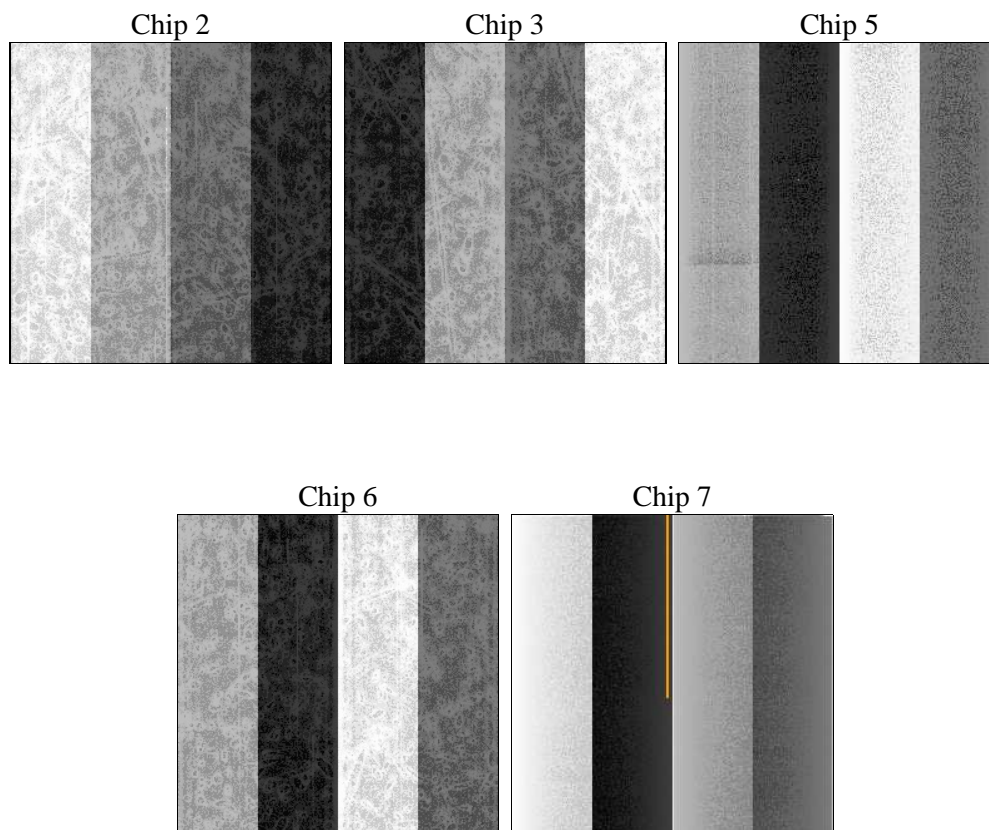
## 2 OBI

### 2.1 OBI

#### 2.1.1 Images



#### 2.1.2 Bias



### 2.1.3 Parameters

obi_num	0	Obi number	sched_exp_time	10000.000000	[s] Scheduled observation exposure time
ascdsver	8.5.1	Processing system revision	ontime	10053.29998064	Sum of GTIs [s]
caldsver	4.5.5	&#160	ontime2	10040.731226534	Sum of GTIs [s]
date	2012-12-18T07:05:35	Date and time of file creation	ontime3	10053.29998064	Sum of GTIs [s]
revision	3	Processing version of data	ontime5	10053.29998064	Sum of GTIs [s]
			ontime6	10050.158990502	Sum of GTIs [s]
			ontime7	10053.29998064	Sum of GTIs [s]
			l1events	344872	Number of level 1 events

### 2.1.4 Events

	ccd 2	ccd 3	ccd 5	ccd 6	ccd 7
level 1 events	63356	59530	85932	63393	72661
rejected events	57297	53414	43118	56838	37953
rejected %	90%	89%	50%	89%	52%

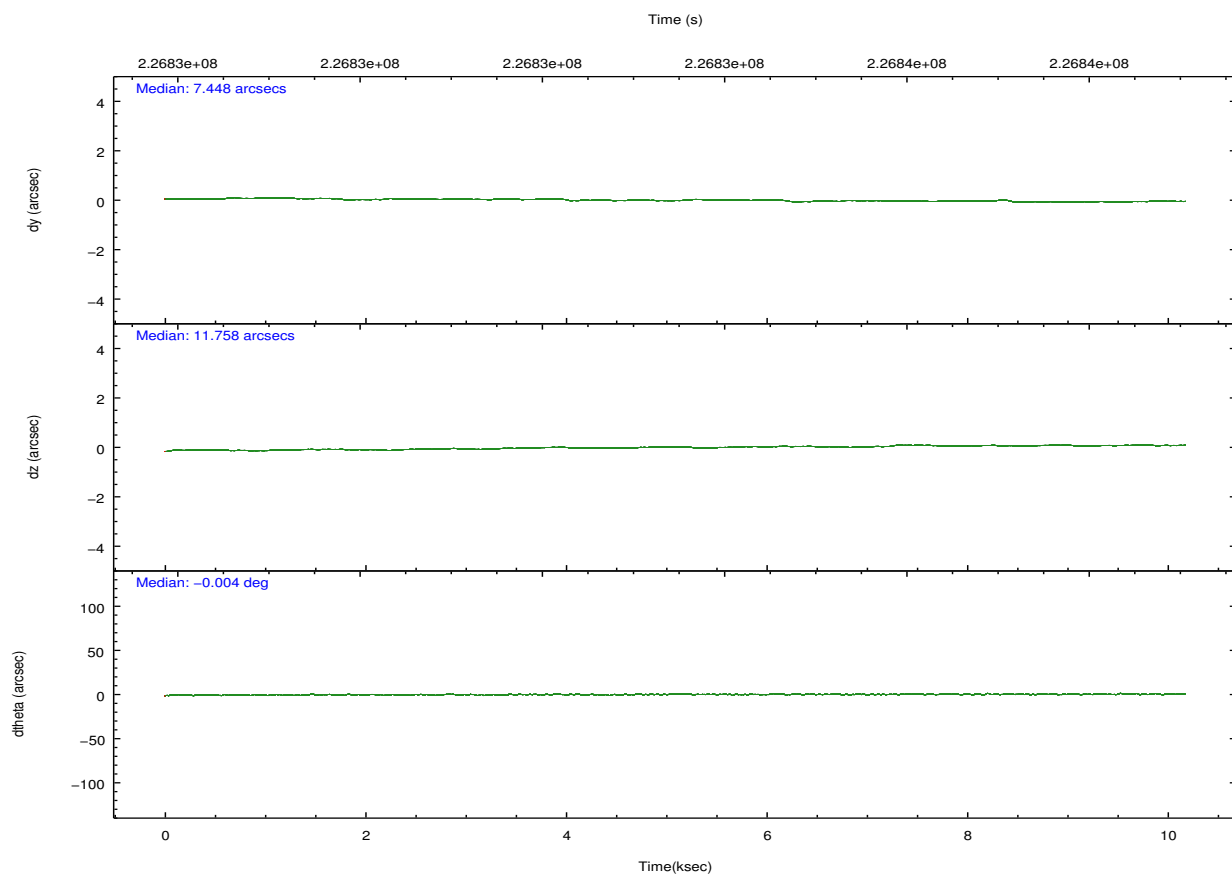
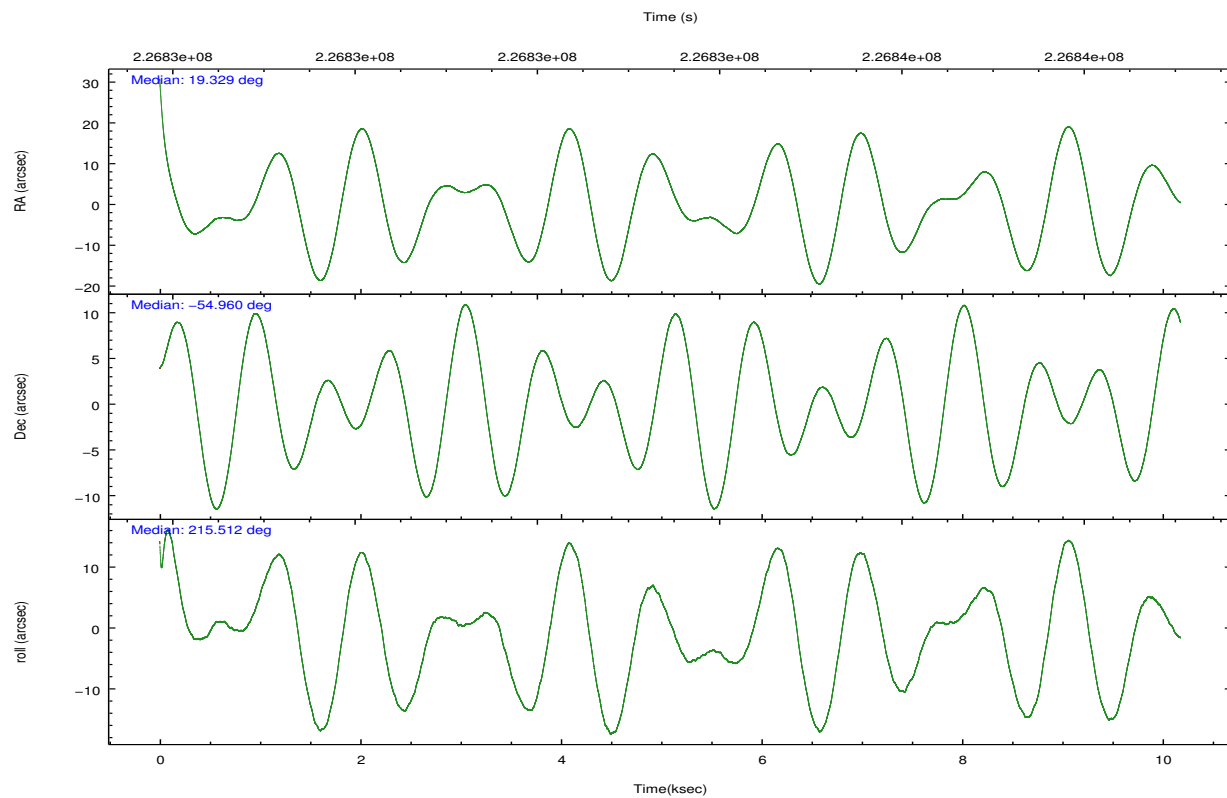
	ccd 2	ccd 3	ccd 5	ccd 6	ccd 7
grade 0 events	2172	2304	4616	2313	3732
	3%	3%	5%	3%	5%
grade 1 events	25	33	92	33	74
	0%	0%	0%	0%	0%
grade 2 events	1412	1282	12492	1445	7083
	2%	2%	14%	2%	9%
grade 3 events	698	708	1916	724	3279
	1%	1%	2%	1%	4%
grade 4 events	640	675	1842	735	3270
	1%	1%	2%	1%	4%
grade 5 events	2033	2436	6806	2506	7428
	3%	4%	7%	3%	10%
grade 6 events	1141	1154	21964	1343	17360
	1%	1%	25%	2%	23%
grade 7 events	55235	50938	36204	54294	30435
	87%	85%	42%	85%	41%



## 2.2 Compared Parameters

Parameter	Planned	Actual	Parameter	Planned	Actual
Instrument	ACIS	ACIS	Obspar format version number	7	7
Detector	ACIS-23567	ACIS-23567	Obspar file type	PREDICTED	ACTUAL
Grating	NONE	NONE	Obspar update status	NONE	UPDATED
Data mode	VFAINT	VFAINT	Number of optional ACIS chips dropped	0	0
Observation mode	POINTING	POINTING	On-chip summing requested	N	N
[deg] Pointing RA	19.348003	19.32895726088344	Subarray requested	NONE	NONE
[deg] Pointing Dec	-54.935680	-54.9605749431713	Alternating exposures requested	N	N
[deg] Pointing Roll	215.372838	215.5138436192666	[s] Primary exposure time	0.000000	3.1
[mm] SIM focus pos	-0.684267	-0.6828225247311905			
[mm] SIM defocus	0	0.001444936568705701			
[mm] SIM translation stage pos	-190.132523	-190.1400660498719			
[mm] SIM translation stage offset	0	0.00754346686406393			
[s] Observation start time (MET)	226828540.184000	226827604.19129			
Observation start date	2005-03-10T07:54:36	2005-03-10T07:40:04			
[s] Observation end time (MET)	226838540.184000	226839363.50432			
Observation end date	2005-03-10T10:41:16	2005-03-10T10:56:03			
Read mode	TIMED	TIMED			

## 2.3 Aspect

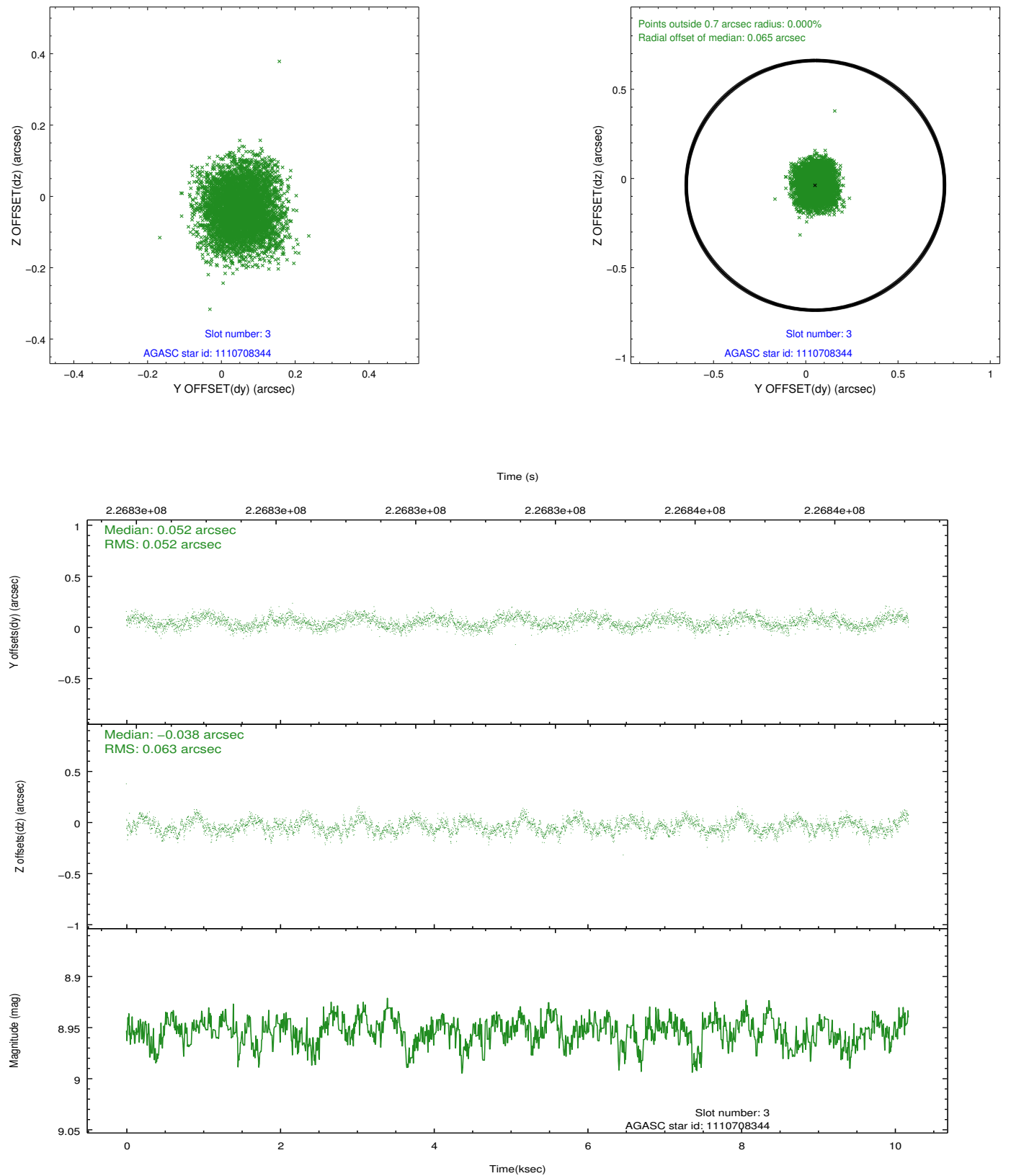


### Slot Statistics

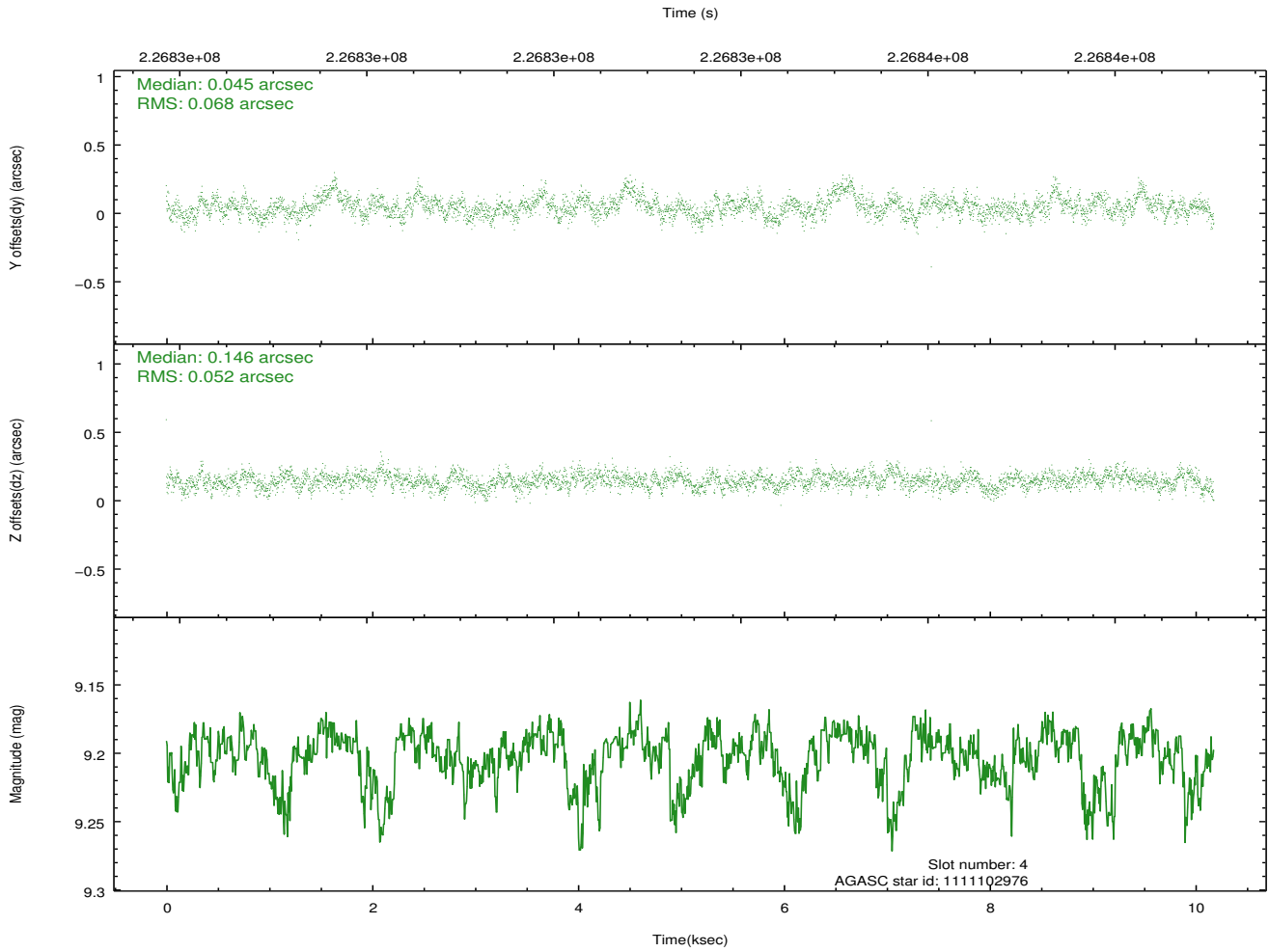
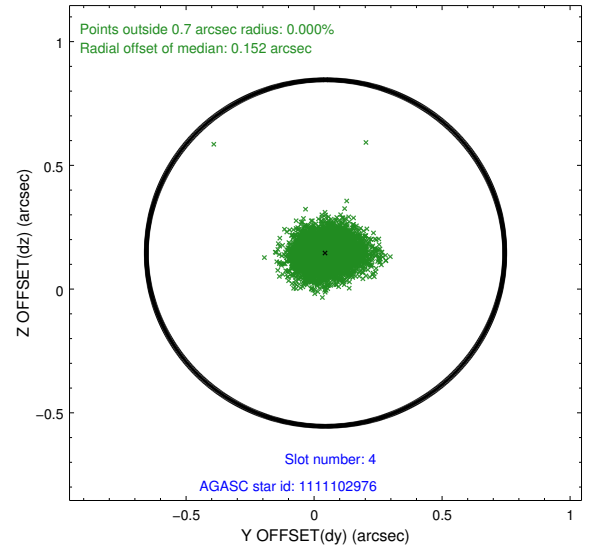
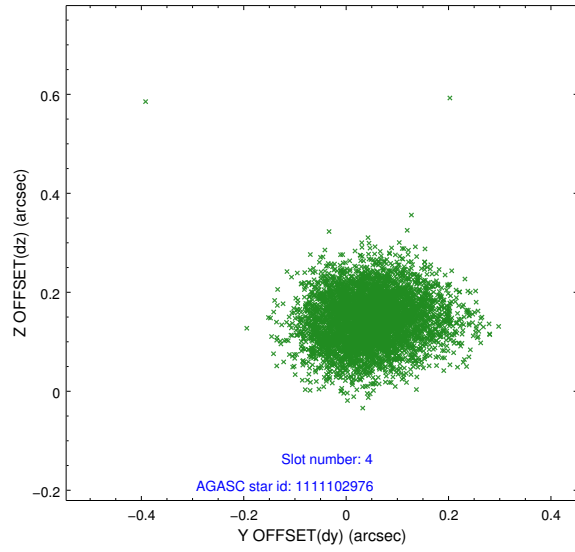
slot	status	id	mag	n_pts	med_dy	med_dz	dr1	dr2	ra	dec	mean_y	mean_z
0	FID	ACIS-S-2	7.10	2483	-0.024	-0.023	0.007	0.011	0.000000	0.000000	-760.23	-1733.07
1	FID	ACIS-S-4	7.20	2483	0.076	0.018	0.006	0.011	0.000000	0.000000	2152.90	174.93
2	FID	ACIS-S-5	7.23	2483	-0.083	0.014	0.007	0.011	0.000000	0.000000	-1812.47	169.17
3	GUIDE	1110708344	8.95	4962	0.052	-0.038	0.088	0.139	19.732627	-54.914092	-692.23	399.40
4	GUIDE	1111102976	9.20	4962	0.045	0.146	0.090	0.149	18.474979	-55.242156	2106.33	-127.86
5	GUIDE	1111105360	8.16	4966	-0.047	-0.112	0.051	0.082	18.732117	-55.373468	1943.61	560.68
6	GUIDE	1111105912	8.69	4965	-0.088	-0.039	0.058	0.095	18.878639	-55.577980	2119.90	1335.71
7	GUIDE	1111106208	8.29	4961	0.033	0.044	0.067	0.107	20.726407	-55.070959	-2017.81	2065.27

## 2.4 Star Slots

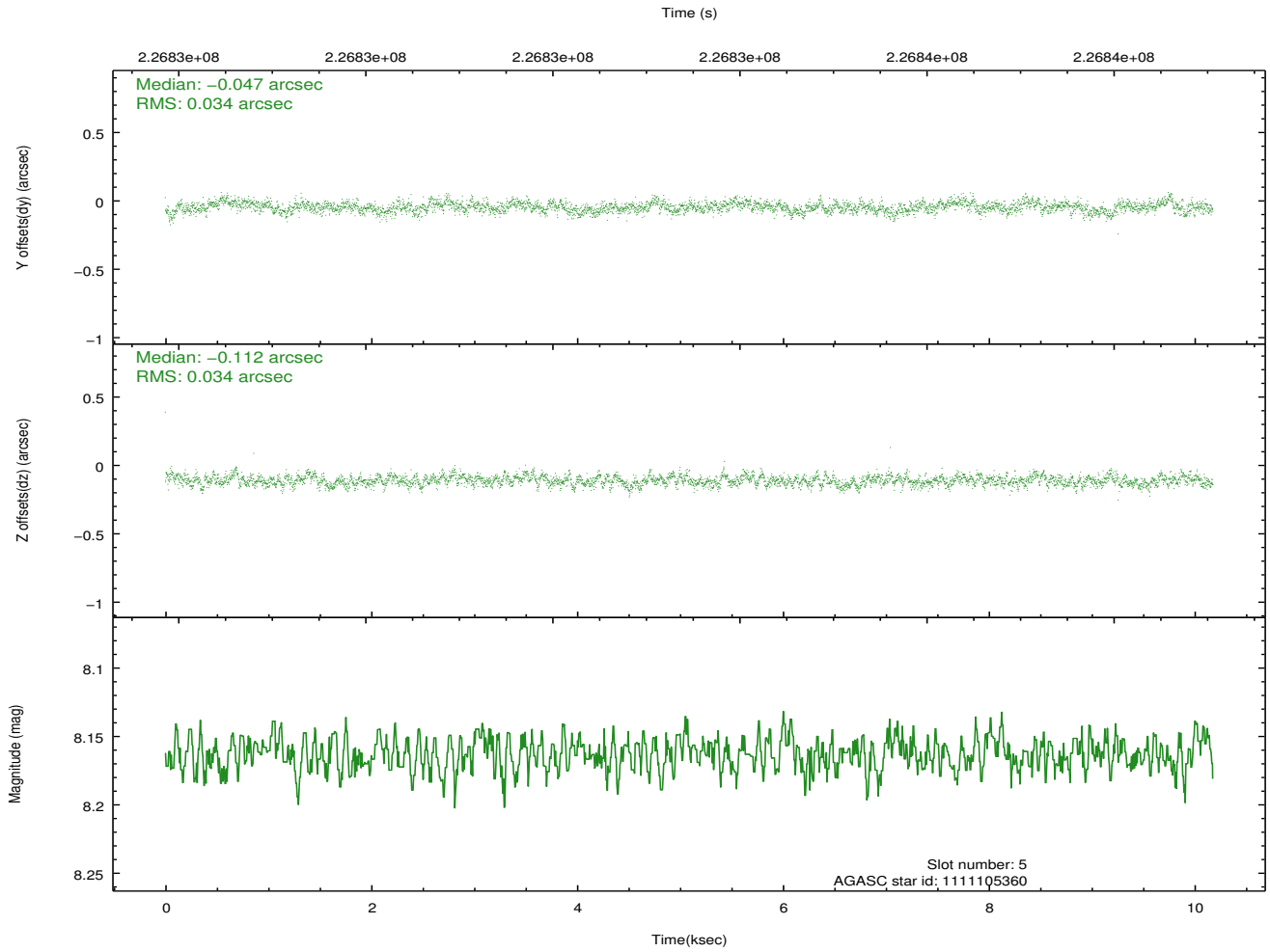
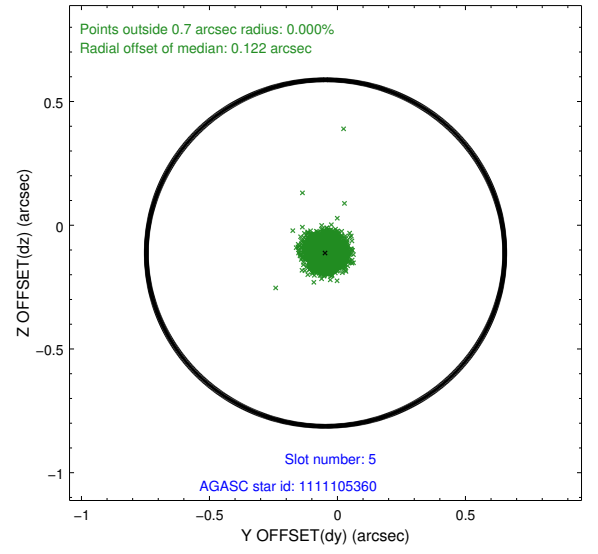
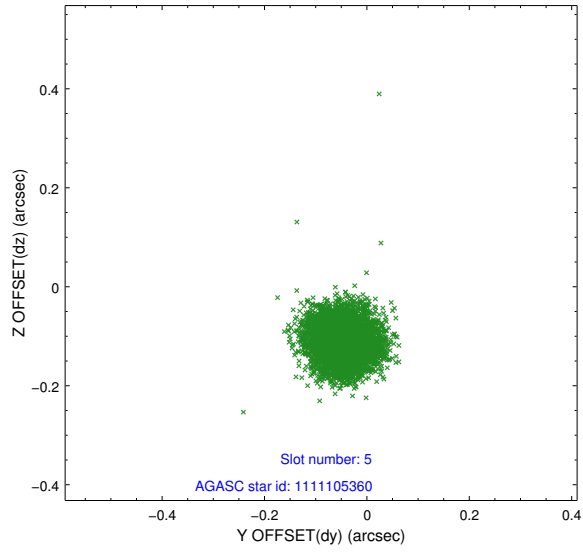
### 2.4.1 Slot 3



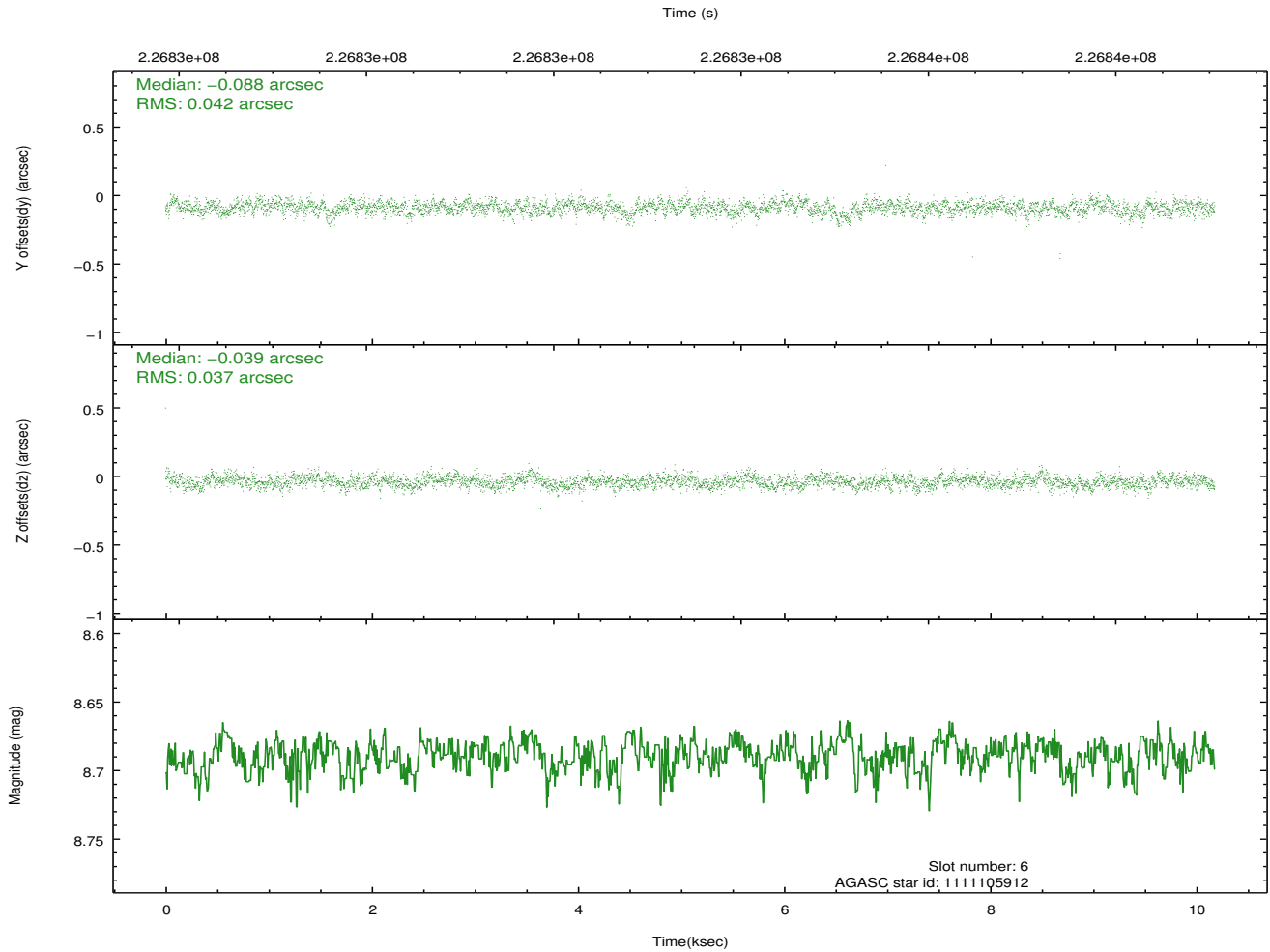
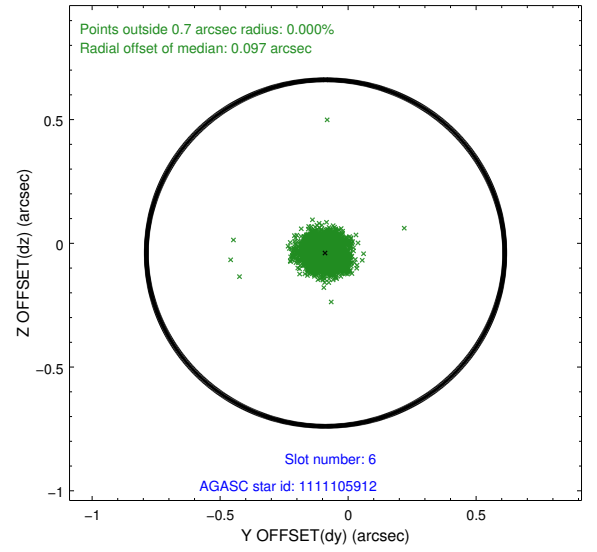
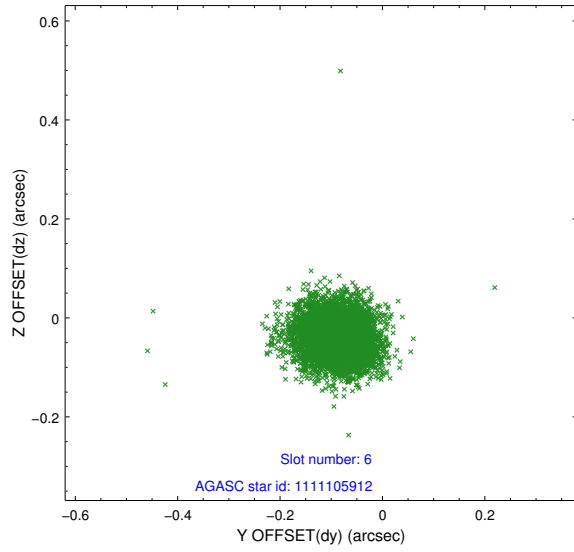
## 2.4.2 Slot 4



### 2.4.3 Slot 5

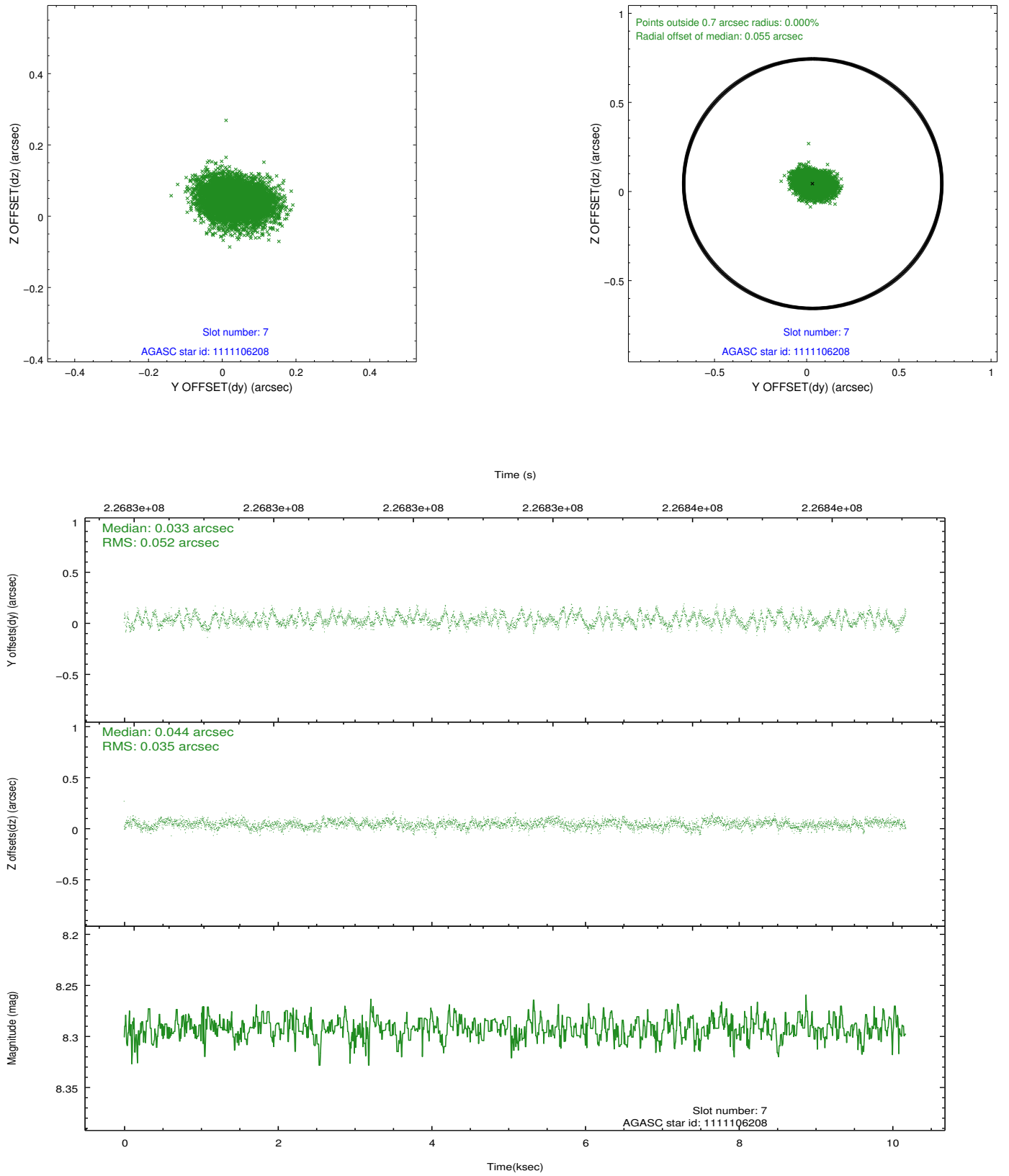


## 2.4.4 Slot 6



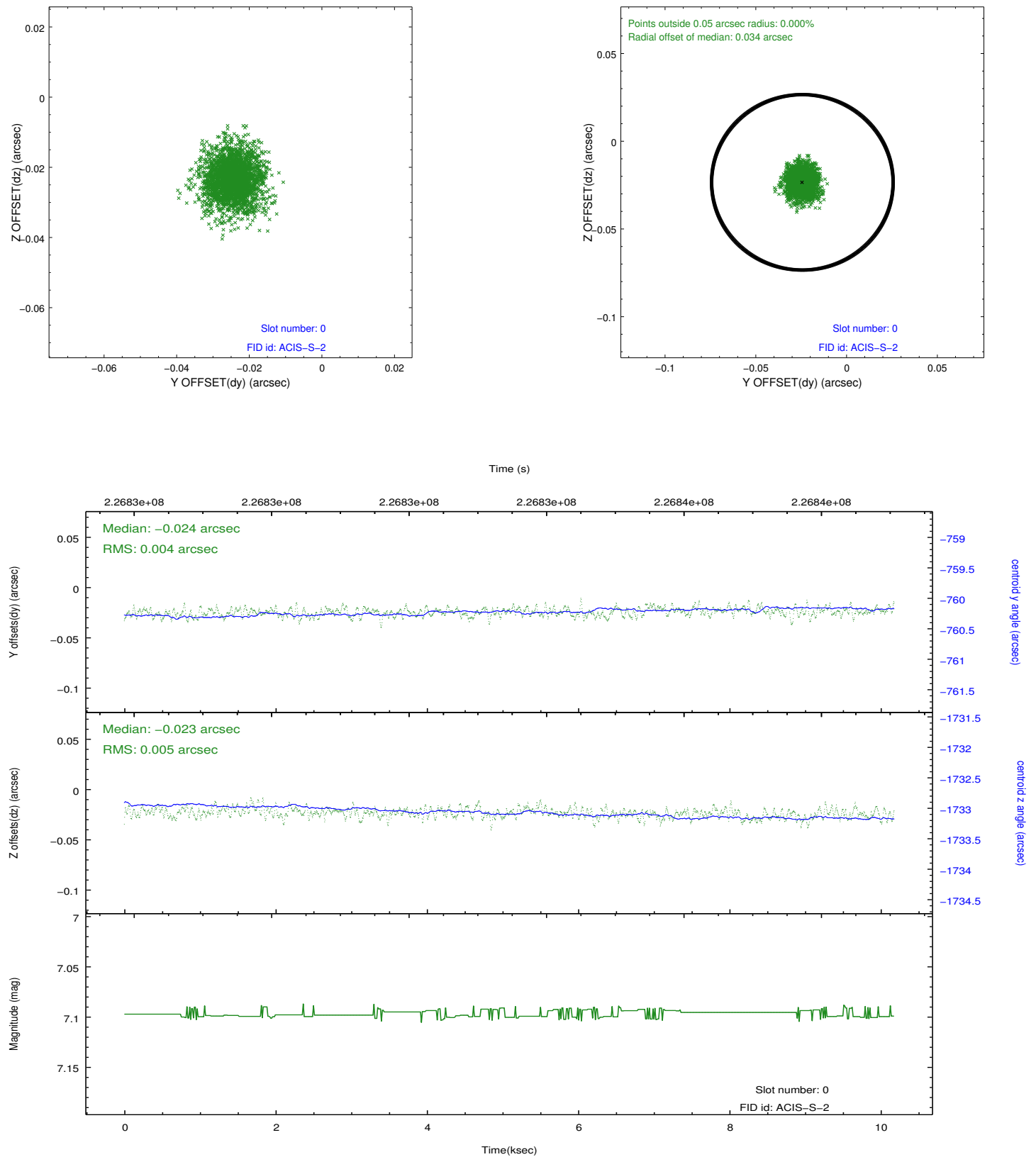


## 2.4.5 Slot 7

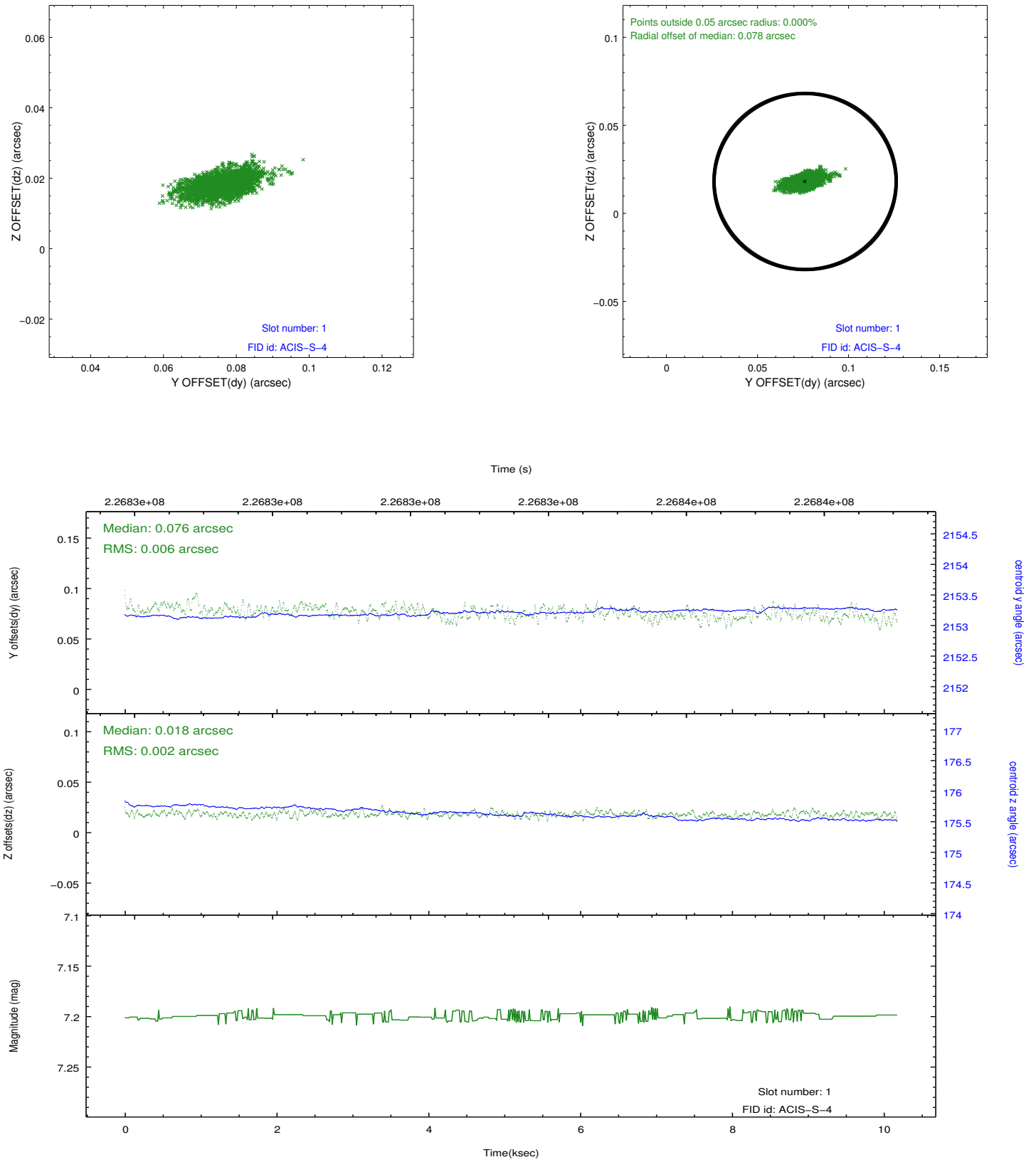


## 2.5 FID Slots

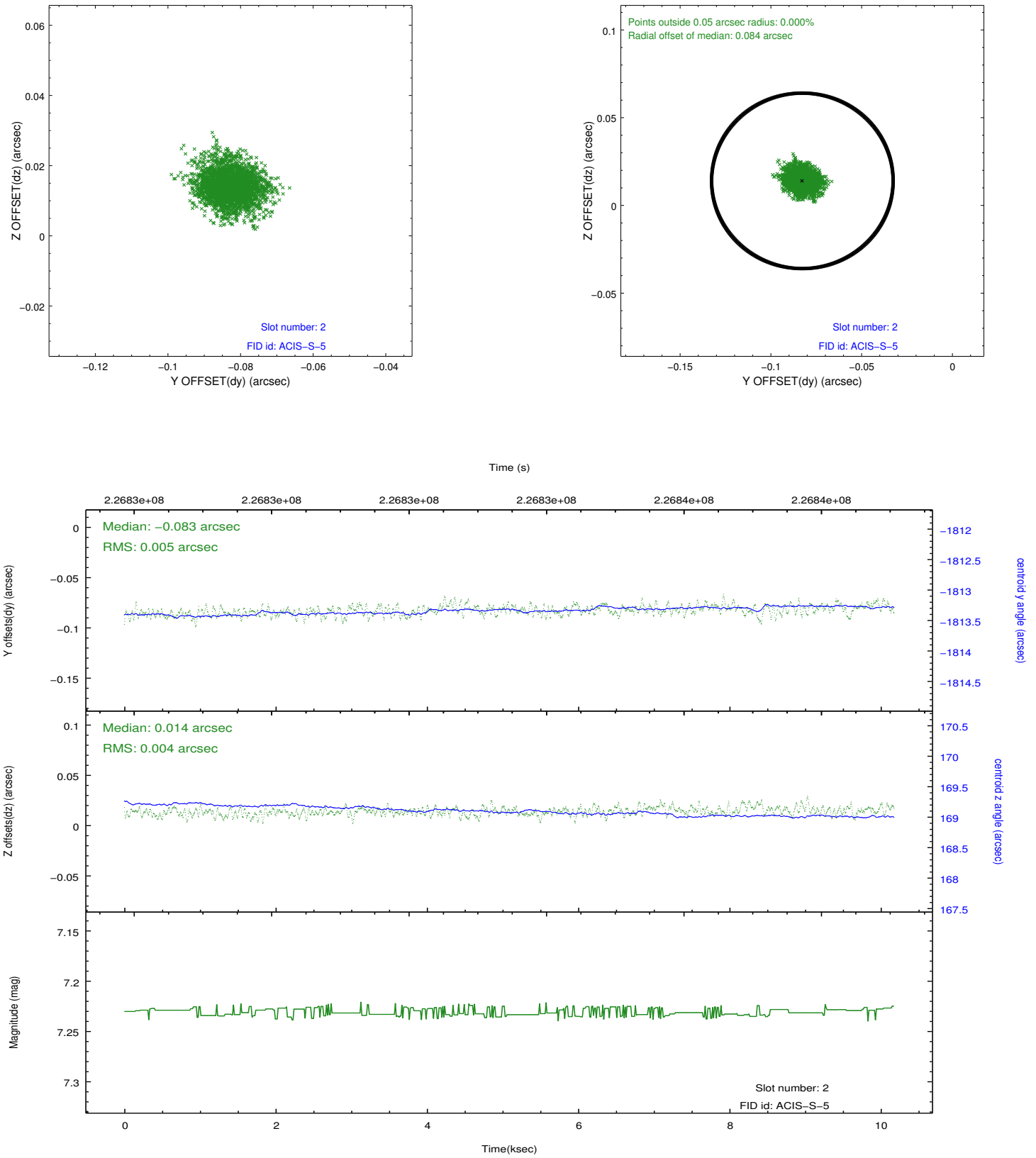
### 2.5.1 Slot 0



## 2.5.2 Slot 1



### 2.5.3 Slot 2



## **A Summary**

### **A.1 Status**

V&V Scientist	Jen Lauer
V&V Date (YYYY-MM-DD)	2013.01.11
V&V Edition	1
V&V Disposition and Status	OK
V&V Charge Time	10.05329

### **A.2 Comments**