

# V&V Reference Report

## L2 ASCDS Version : 7.6.7

Observation 5832 - L2 Version 002  
Chandra X-Ray Center

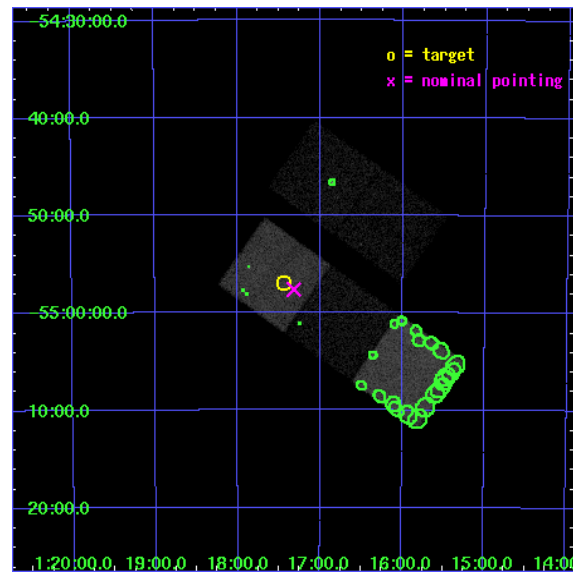
L2 Processing Date: Feb 27 2006

## Contents

<b>1</b>	<b>Front</b>	<b>2</b>
<b>2</b>	<b>OBI</b>	<b>3</b>
2.1	OBI . . . . .	3
2.1.1	Images . . . . .	3
2.1.2	Bias . . . . .	3
2.1.3	Parameters . . . . .	4
2.1.4	Events . . . . .	4
2.2	Compared Parameters . . . . .	5
2.3	Aspect . . . . .	6
2.4	Star Slots . . . . .	9
2.4.1	Slot 3 . . . . .	9
2.4.2	Slot 4 . . . . .	10
2.4.3	Slot 5 . . . . .	11
2.4.4	Slot 6 . . . . .	12
2.4.5	Slot 7 . . . . .	13
2.5	FID Slots . . . . .	14
2.5.1	Slot 0 . . . . .	14
2.5.2	Slot 1 . . . . .	15
2.5.3	Slot 2 . . . . .	16
<b>3</b>	<b>Point Sources</b>	<b>17</b>
<b>A</b>	<b>Summary</b>	<b>18</b>
A.1	Status . . . . .	18
A.2	Comments . . . . .	18

# 1 Front

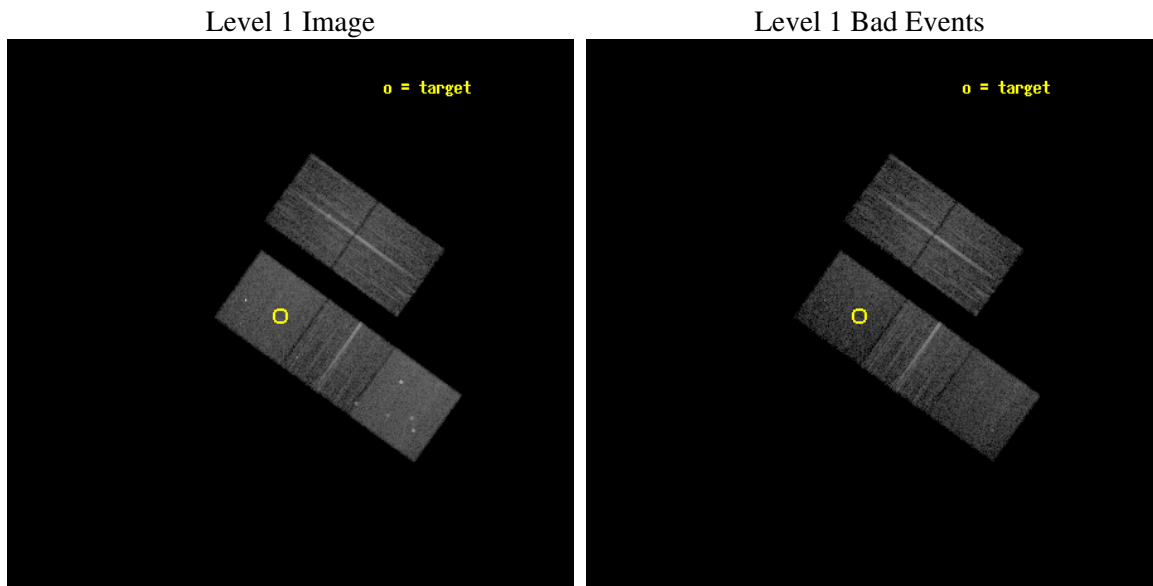
seq_num	800541
obs_id	5832
title	X-ray emission from clusters of galaxies from the REFLEX sample.
observer	Dr. Peter Predehl
object	RXCJ0117.8-5455
dtcycle	0
cycle	P
ra_targ	19.36
dec_targ	-54.95
ra_nom	19.328996717469
dec_nom	-54.960558871382
roll_nom	215.51387592009
revision	2
ontime	10053.29998067
livetime	9921.946215291
ontime2	10040.73614952
ontime3	10053.29998067
ontime5	10053.29998067
ontime6	10050.158990532
ontime7	10053.29998067
l2events	85350



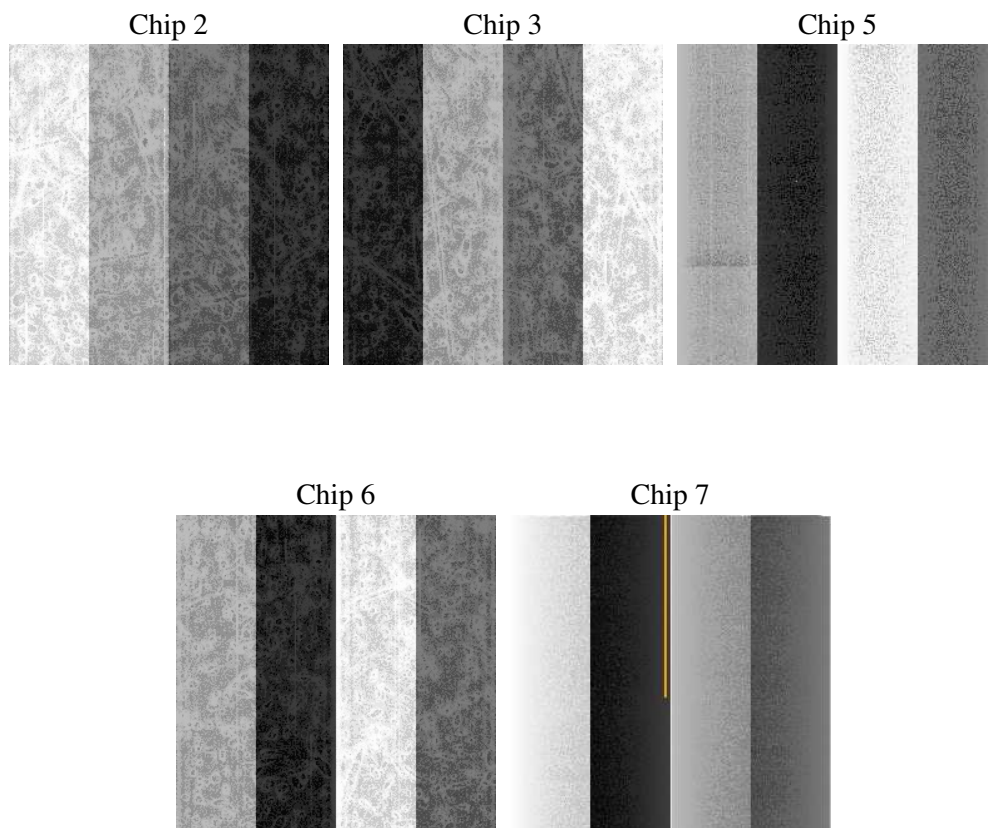
## 2 OBI

### 2.1 OBI

#### 2.1.1 Images



#### 2.1.2 Bias



### 2.1.3 Parameters

obi_num	0
ascdsver	7.6.7
caldbver	3.2.1
date	2006-02-27T06:32:50
revision	2

sched_exp_time	10000.000000
ontime	10057.487276047
ontime2	10044.923414975
ontime3	10057.487246126
ontime5	10057.487276047
ontime6	10054.346255988
ontime7	10057.487276047
l1events	344872

### 2.1.4 Events

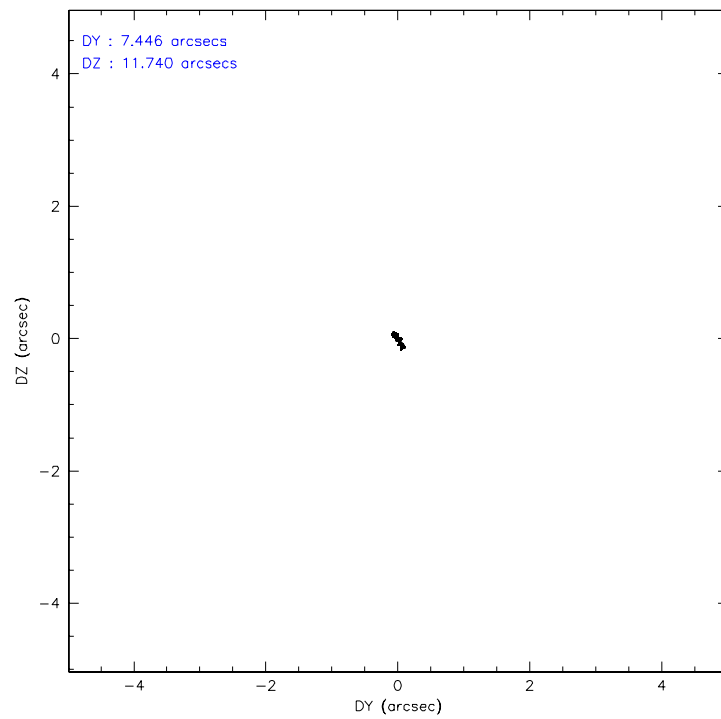
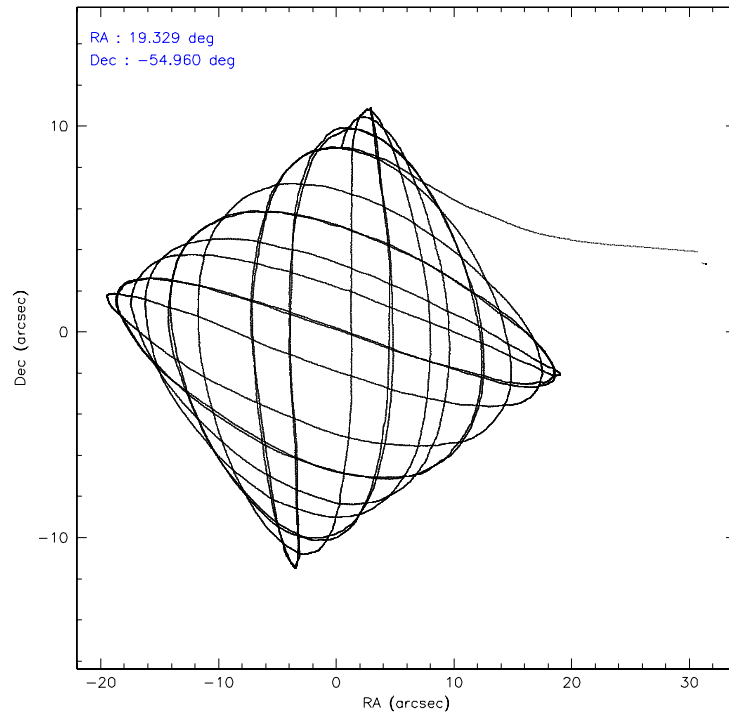
	ccd 2	ccd 3	ccd 5	ccd 6	ccd 7
level 1 events	63356	59530	85932	63393	72661
rejected events	57297	53414	44615	56840	40438
rejected %	90%	89%	51%	89%	55%

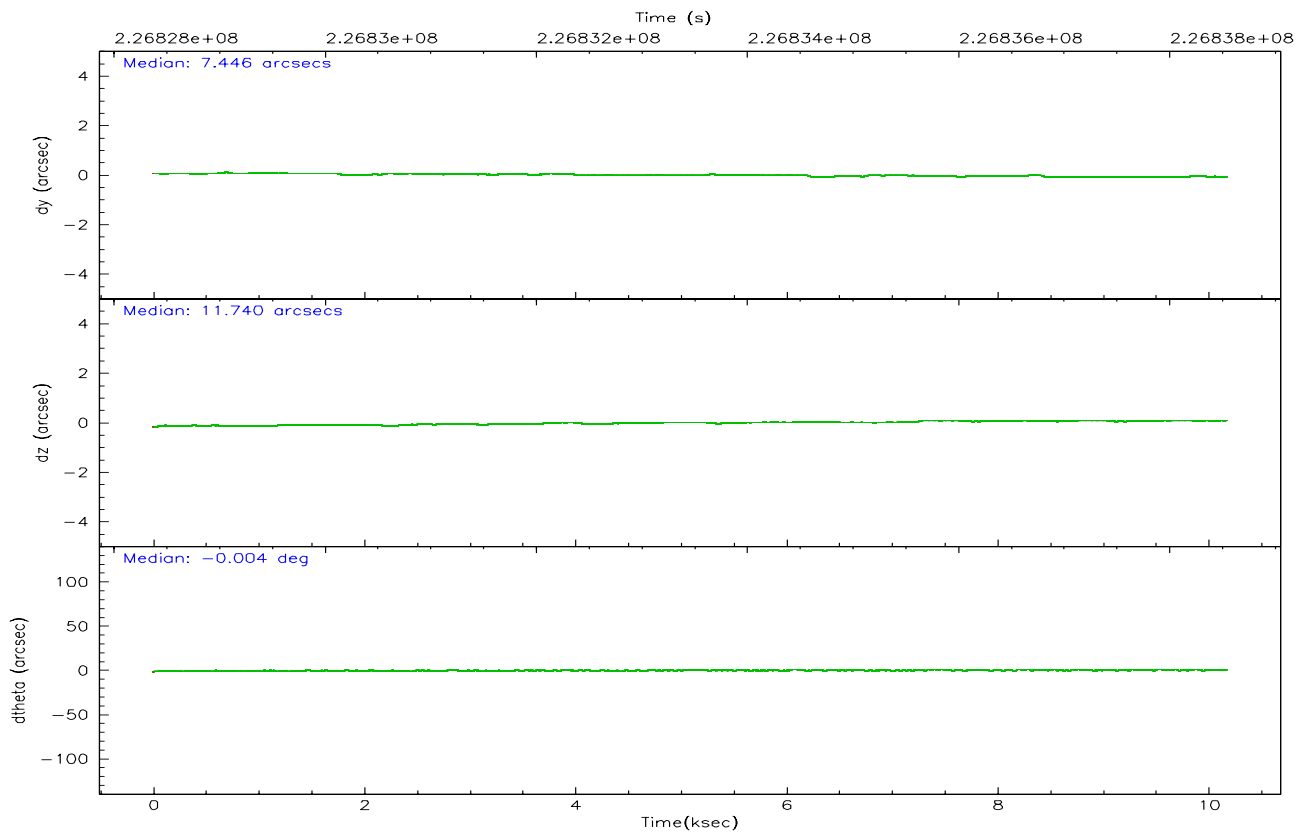
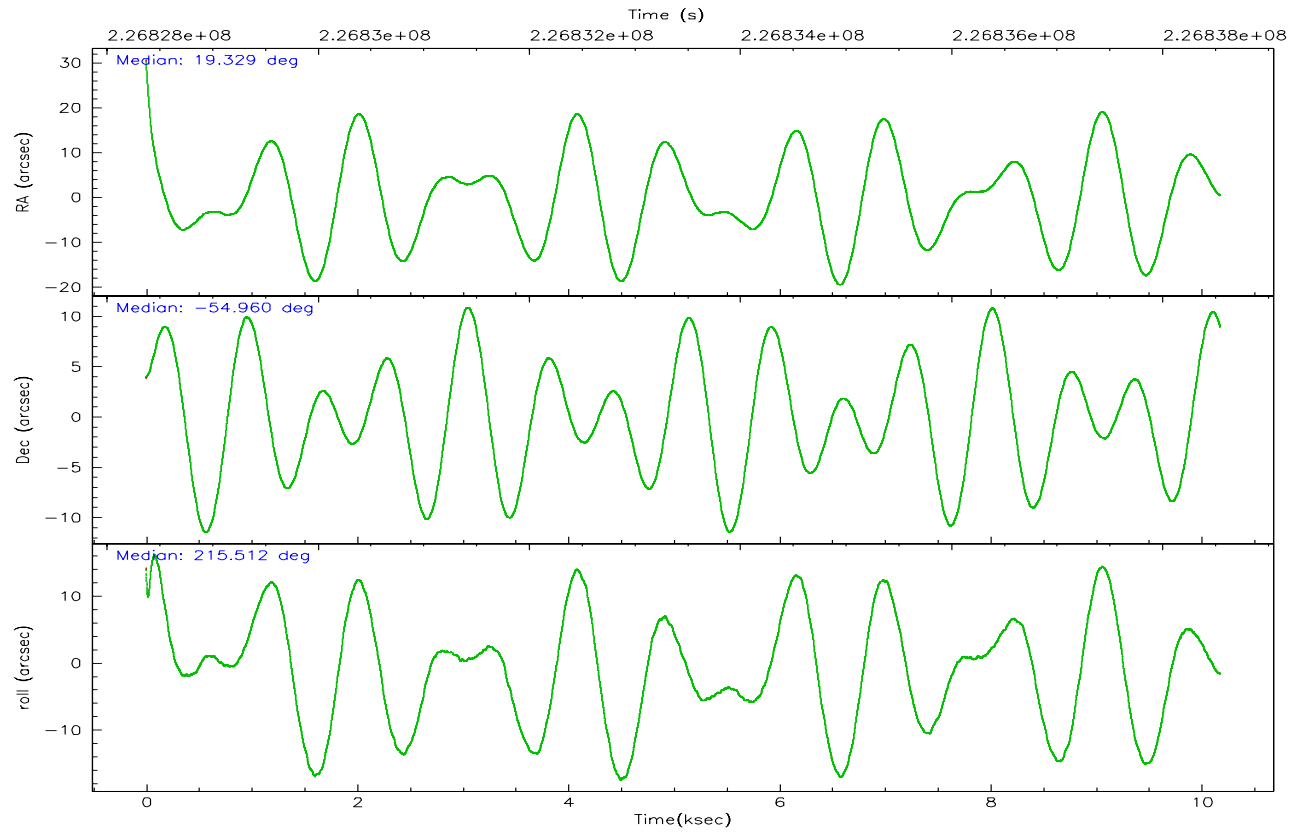
	ccd 2	ccd 3	ccd 5	ccd 6	ccd 7
grade 0 events	2172	2304	3443	2313	2646
	3%	3%	4%	3%	3%
grade 1 events	25	33	47	33	59
	0%	0%	0%	0%	0%
grade 2 events	1412	1282	12849	1445	7920
	2%	2%	14%	2%	10%
grade 3 events	698	708	1082	724	2025
	1%	1%	1%	1%	2%
grade 4 events	640	675	1032	735	1980
	1%	1%	1%	1%	2%
grade 5 events	2033	2436	4548	2506	5340
	3%	4%	5%	3%	7%
grade 6 events	1141	1154	22937	1343	17680
	1%	1%	26%	2%	24%
grade 7 events	55235	50938	39994	54294	35011
	87%	85%	46%	85%	48%

## 2.2 Compared Parameters

Parameter	Planned	Actual	Parameter	Planned	Actual
Instrument	ACIS	ACIS	Obspar format version number	6	6
Detector	ACIS-23567	ACIS-23567	Obspar file type	PREDICTED	ACTUAL
Grating	NONE	NONE	Obspar update status	NONE	UPDATED
Data mode	VFAINT	VFAINT	On-chip summing requested	N	N
Observation mode	POINTING	POINTING	Subarray requested	NONE	NONE
Pointing RA	19.348003	19.32899671746858	Alternating exposures requested	N	N
Pointing Dec	-54.935680	-54.96055887138172	Primary exposure time	0.000000	3.1
Pointing Roll	215.372838	215.5138759200909			
SIM focus pos (mm)	-0.684267	-0.6828225247311905			
SIM defocus (mm)	0	0.001444936568705701			
SIM translation stage pos (mm)	-190.132523	-190.1400660498719			
SIM translation stage offset (mm)	0	0.00754346686406393			
Observation start time	226828540.184000	226827604.19129			
Observation start date	2005-03-10T07:54:36	2005-03-10T07:40:04			
Observation end time	226838540.184000	226839363.50432			
Observation end date	2005-03-10T10:41:16	2005-03-10T10:56:03			
Read mode	TIMED	TIMED			

## 2.3 Aspect





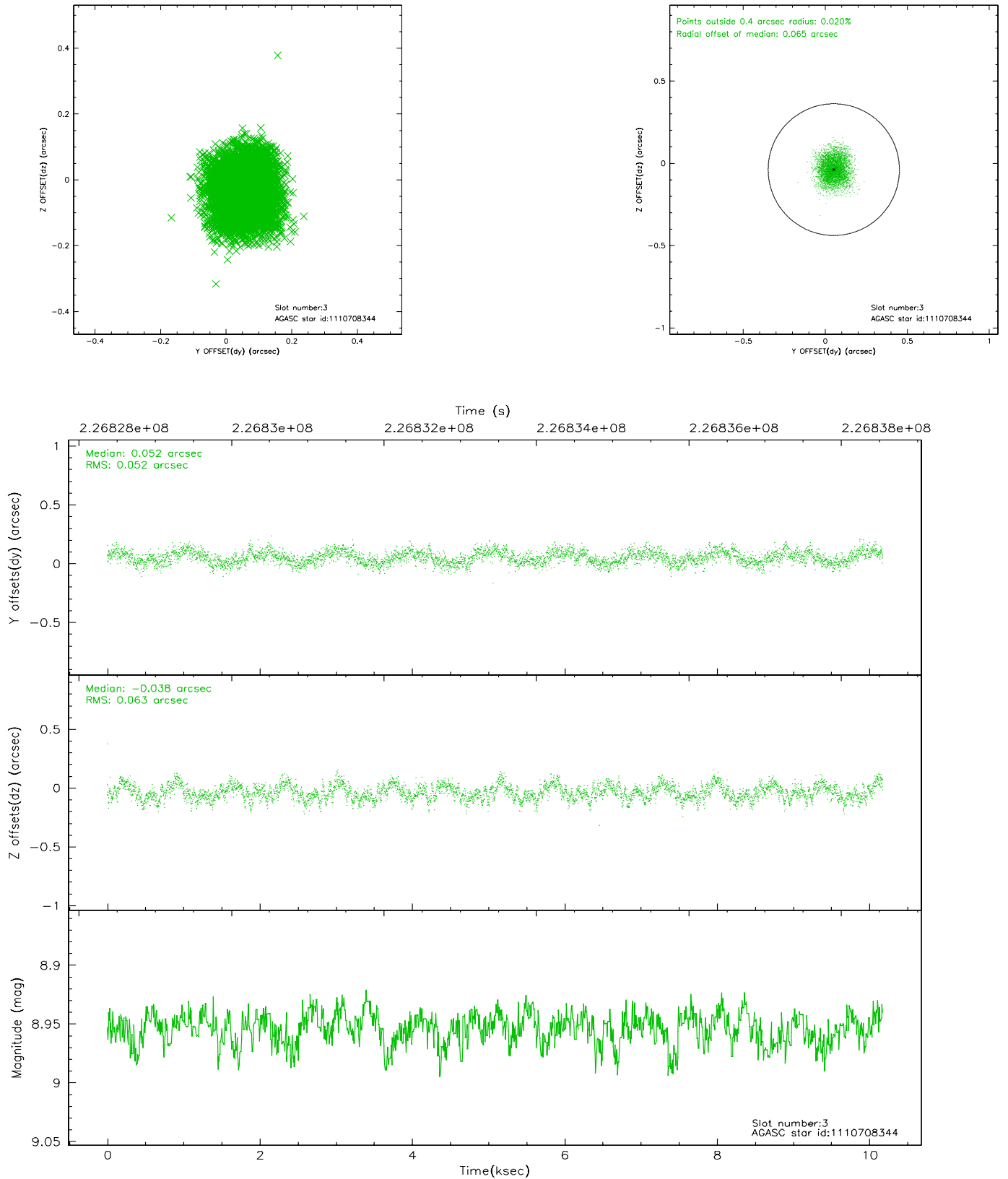
### Slot Statistics

slot	status	id	mag	n_pts	med_dy	med_dz	dr1	dr2	ra	dec	mean_y	mean_z
0	FID	ACIS-S-2	7.10	2483	-0.013	-0.000	0.006	0.011	0.000000	0.000000	-760.22	-1733.03
1	FID	ACIS-S-4	7.20	2483	0.034	0.006	0.006	0.011	0.000000	0.000000	2152.86	174.94
2	FID	ACIS-S-5	7.23	2483	-0.052	0.002	0.007	0.010	0.000000	0.000000	-1812.44	169.18
3	GUIDE	1110708344	8.95	4962	0.052	-0.038	0.088	0.139	19.732627	-54.914092	-692.23	399.40
4	GUIDE	1111102976	9.20	4962	0.045	0.146	0.090	0.149	18.474979	-55.242156	2106.33	-127.86
5	GUIDE	1111105360	8.16	4966	-0.047	-0.112	0.051	0.082	18.732117	-55.373468	1943.61	560.68
6	GUIDE	1111105912	8.69	4965	-0.088	-0.039	0.058	0.095	18.878639	-55.577980	2119.90	1335.71
7	GUIDE	1111106208	8.29	4961	0.033	0.044	0.067	0.107	20.726407	-55.070959	-2017.81	2065.27

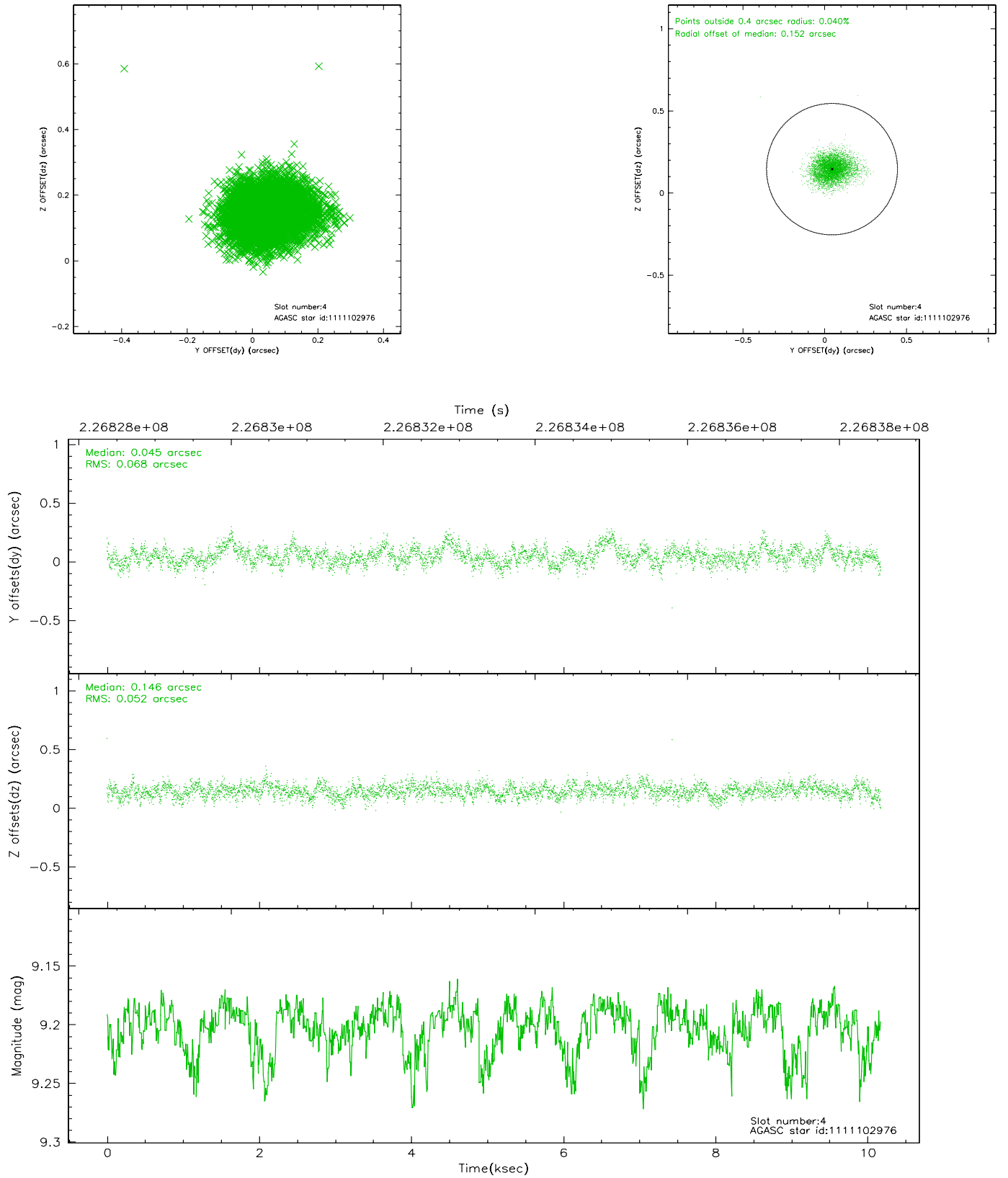


## 2.4 Star Slots

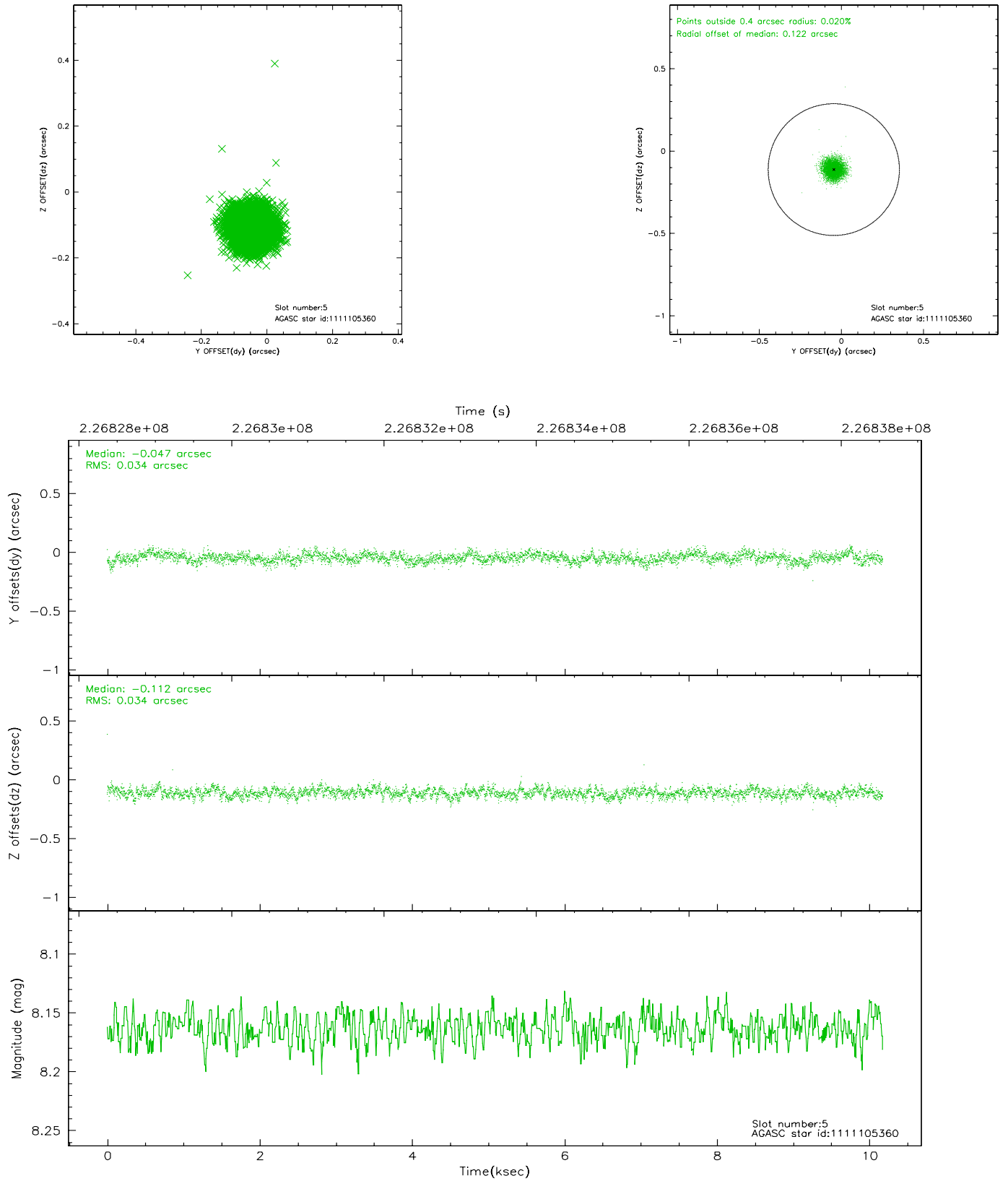
### 2.4.1 Slot 3



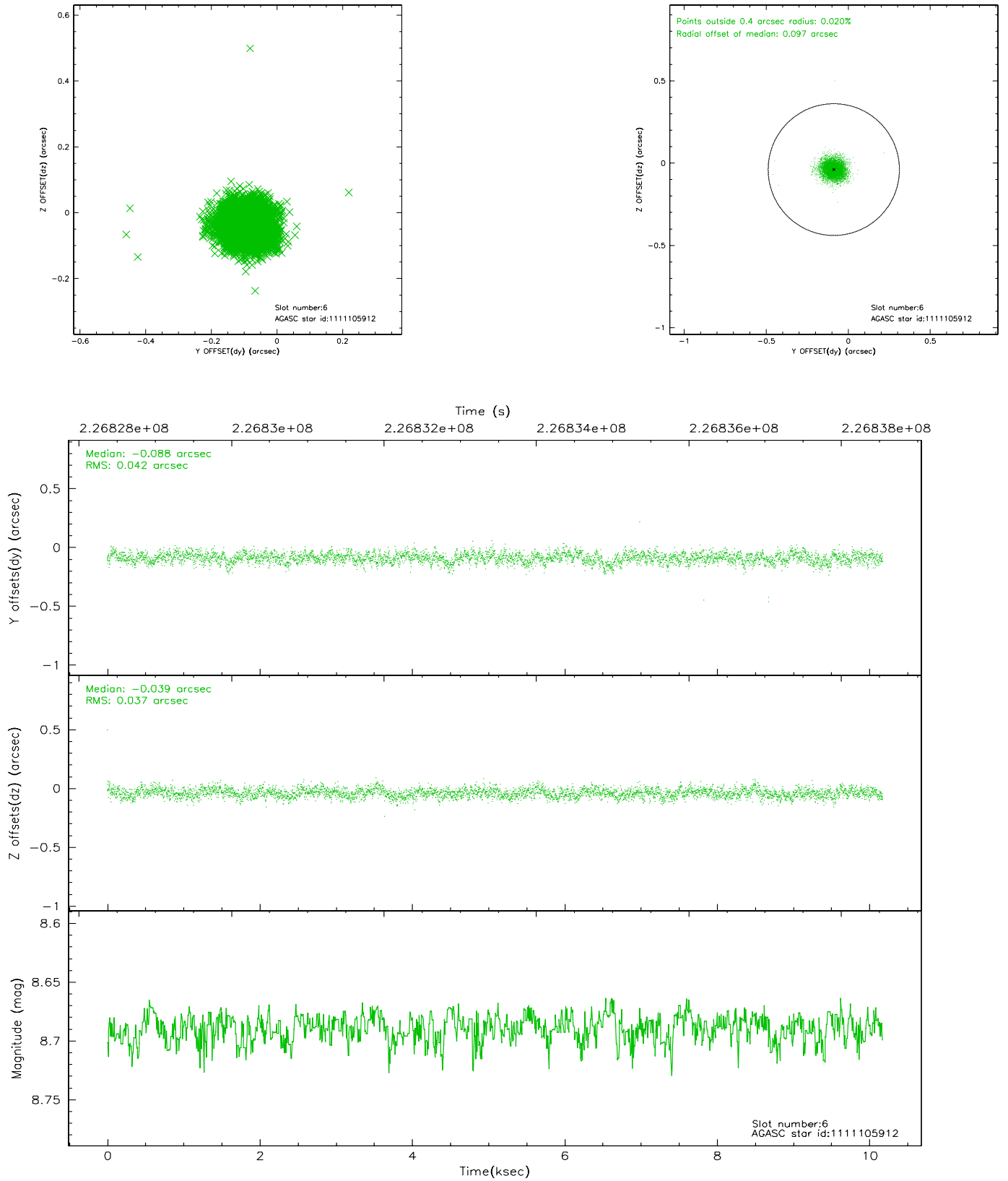
## 2.4.2 Slot 4



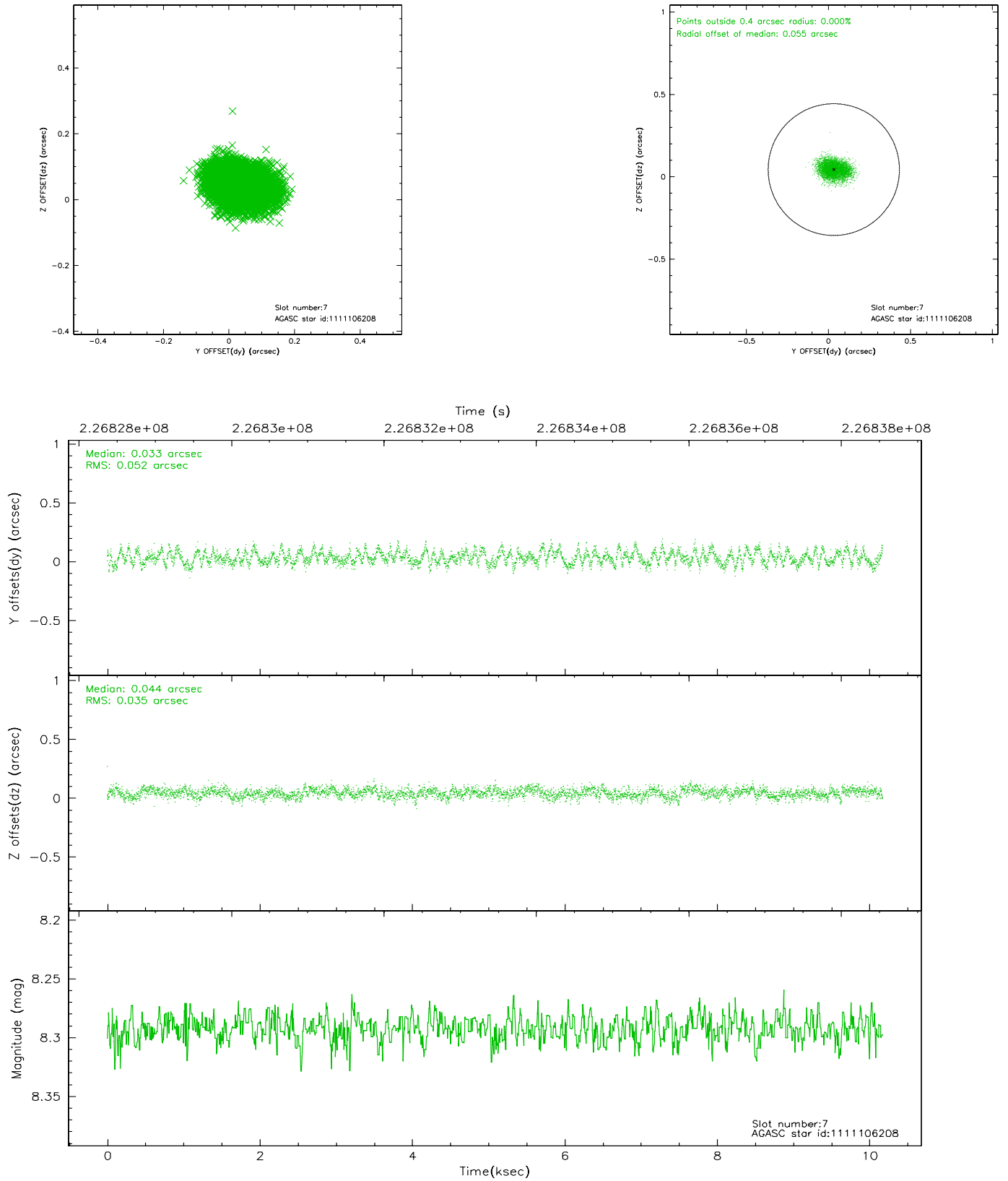
### 2.4.3 Slot 5



## 2.4.4 Slot 6

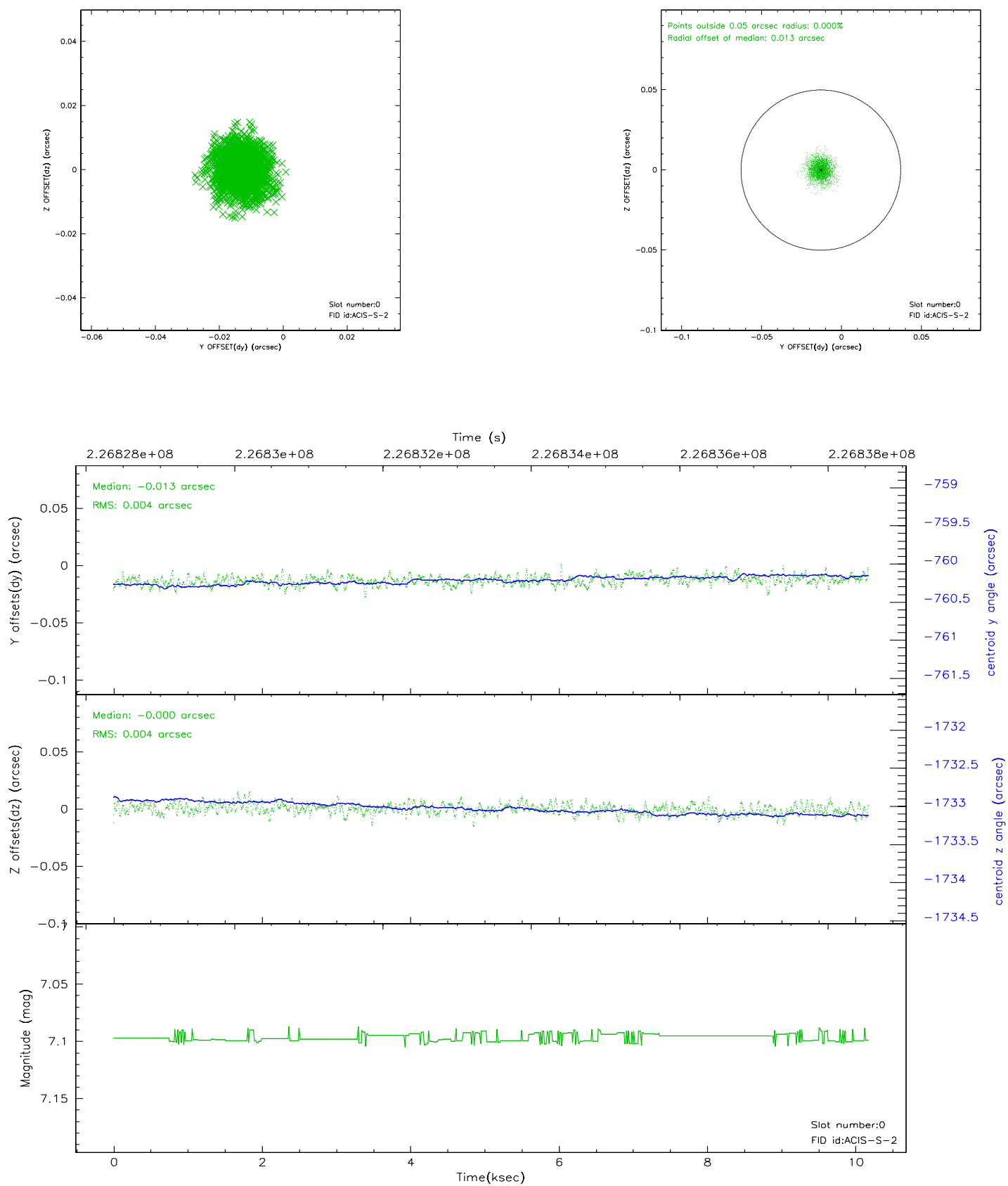


## 2.4.5 Slot 7

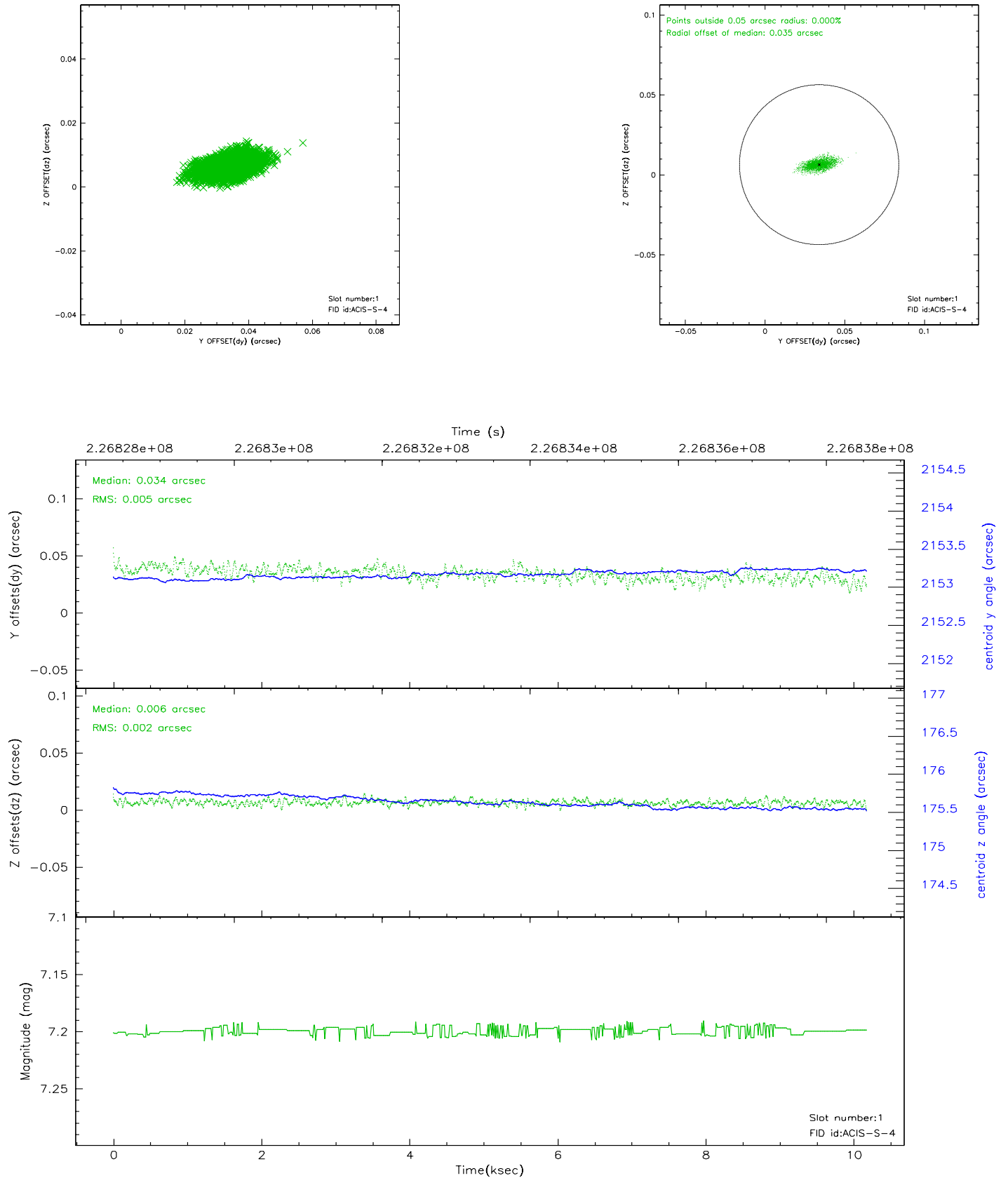


## 2.5 FID Slots

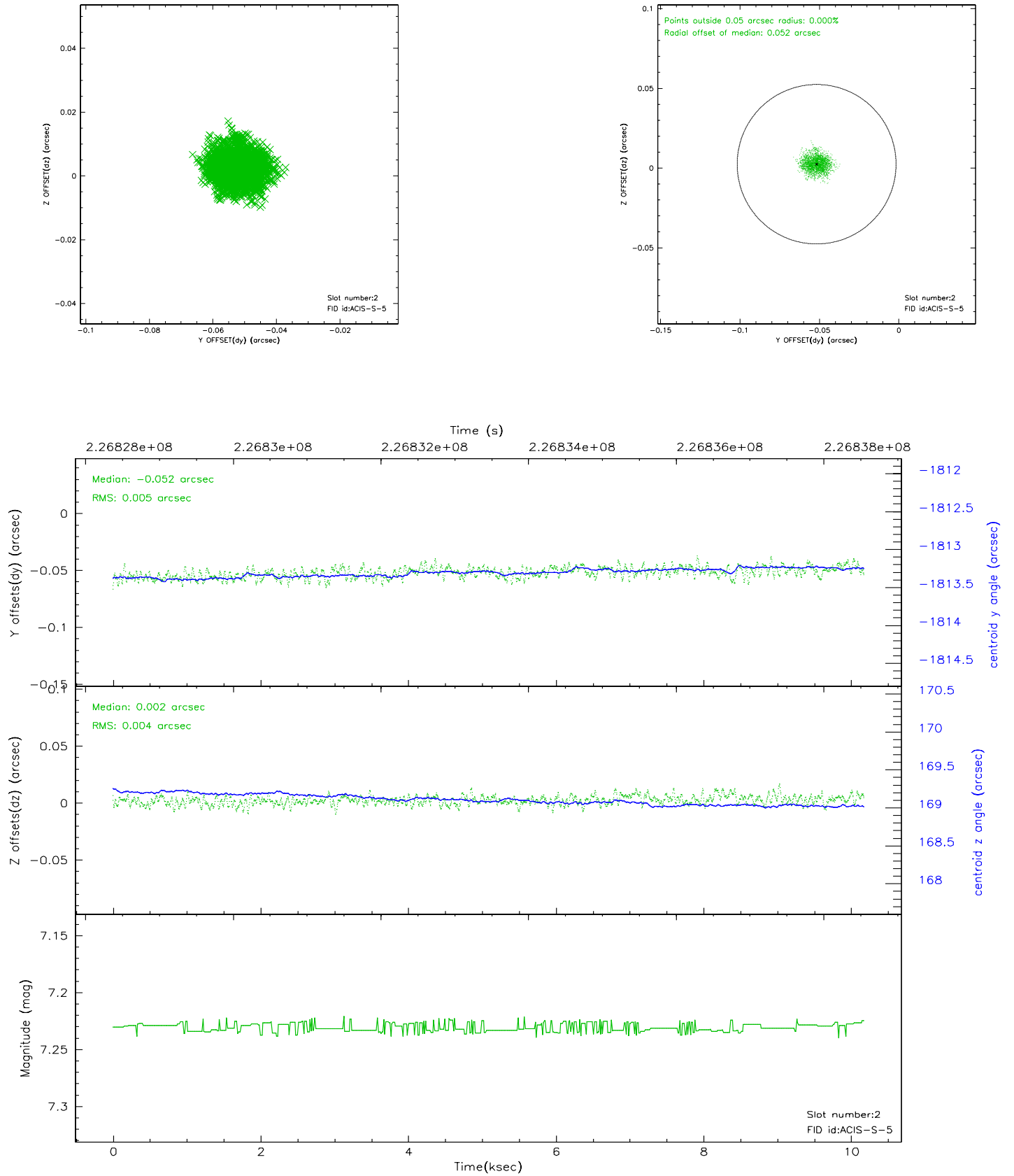
### 2.5.1 Slot 0



## 2.5.2 Slot 1

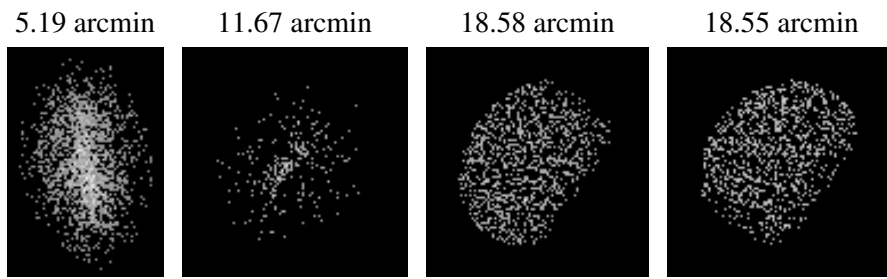


### 2.5.3 Slot 2





### 3 Point Sources



## A Summary

### A.1 Status

V&V Scientist	Beth Sundheim
V&V Date (YYYY-MM-DD)	2006.02.27
V&V Edition	1
V&V Disposition and Status	OK
V&V Charge Time	10.05329

### A.2 Comments